

PRIVATE STORM WATER SEWER TO SERVE

Envision Addition

LOT 1

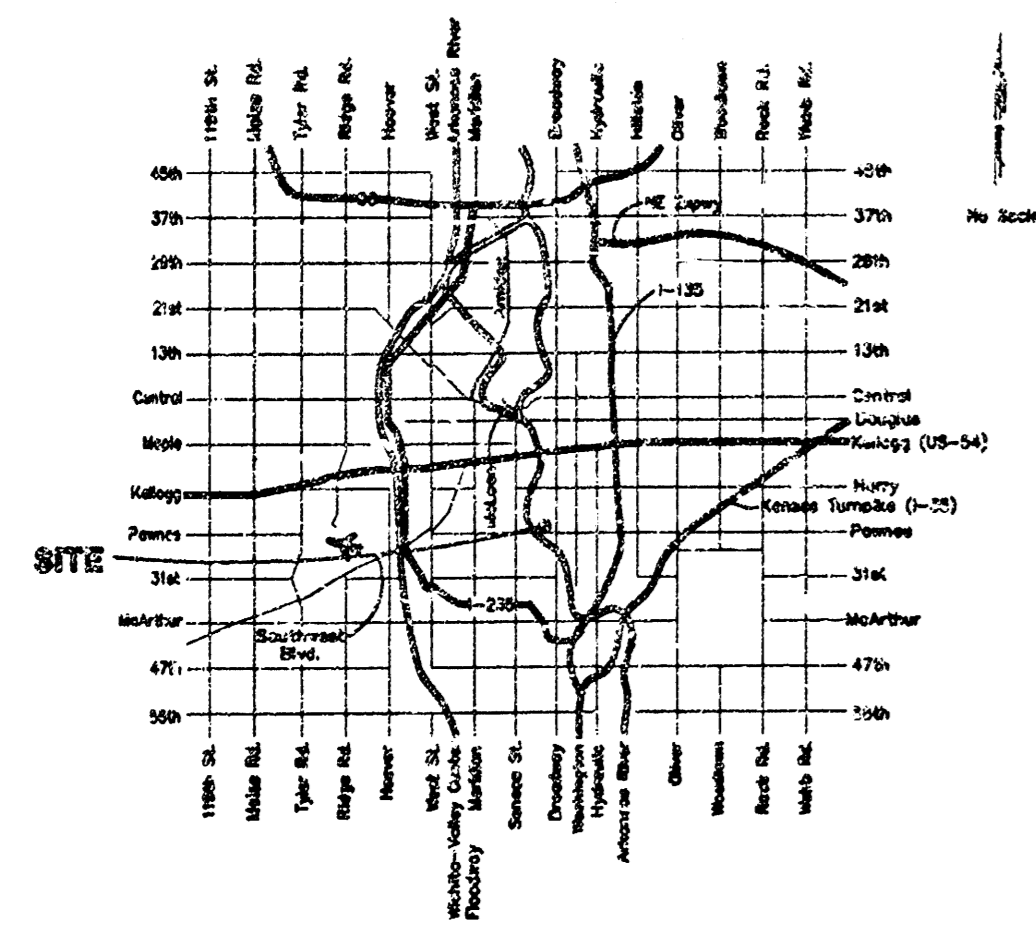
Private Project Number 933 PPS (607861)

CITY OF WICHITA, KANSAS
Michael E. Lindebak, P.E. City Engineer
August, 1999

General Notes:

- Contractor will be required to provide notice to utility companies a minimum of forty-eight (48) hours prior to any excavation, as follows:
 Kansas One-Call 687-2470
 The Contractor must notify the following in case of an emergency:
 Cablevision 252-0661
 Kansas Gas Service 253-2061
 KGE 383-8650
 Peoples Gas Company 383-8600
 Southwestern Bell Telephone Company 942-8811
 City of Wichita Water Department BC0-344-7233
 City of Wichita Sewer Maintenance 268-4908
 268-4071
- Underground utility service lines and overhead utility pole lines are to be adjusted as necessary by others prior to construction unless the plans specifically call for their adjustment by the Contractor or unless the plans specifically identify a utility to be adjusted by its owner during construction. Existing utilities and their location, as shown on the plans, represent the best information obtainable for design. The Contractor will be required to work around existing utilities within the right-of-way which do not conflict with proposed construction.
- Contractor shall not start work on the project until the Project Inspector is assigned to the project and is present on the site. Any work done without inspection will be required to be uncovered for inspection.
- All areas disturbed by construction operations shall be seeded with rye grass at a rate of 5 lbs. per 1000 sq. feet.
- Rubble from the removal of miscellaneous structures and excess excavation which is to be wasted shall be disposed of on sites to be provided by the Contractor. These sites shall be approved by the Engineer as to suitability, appearance and site location. Locations that, in the opinion of the Engineer, will leave an unsightly appearance will not be approved.
- Trees in conflict with proposed construction shall be removed with the Engineer's approval.

Location Map



Index

Cover & Plan/Profile Sheet Line 1	1
Copy Of Plat	2

APPROVED AS NOTED
 BY CITY ENGINEER OF WICHITA

Storm Sewers VRH 8/24/99

NOTE TO CONTRACTORS

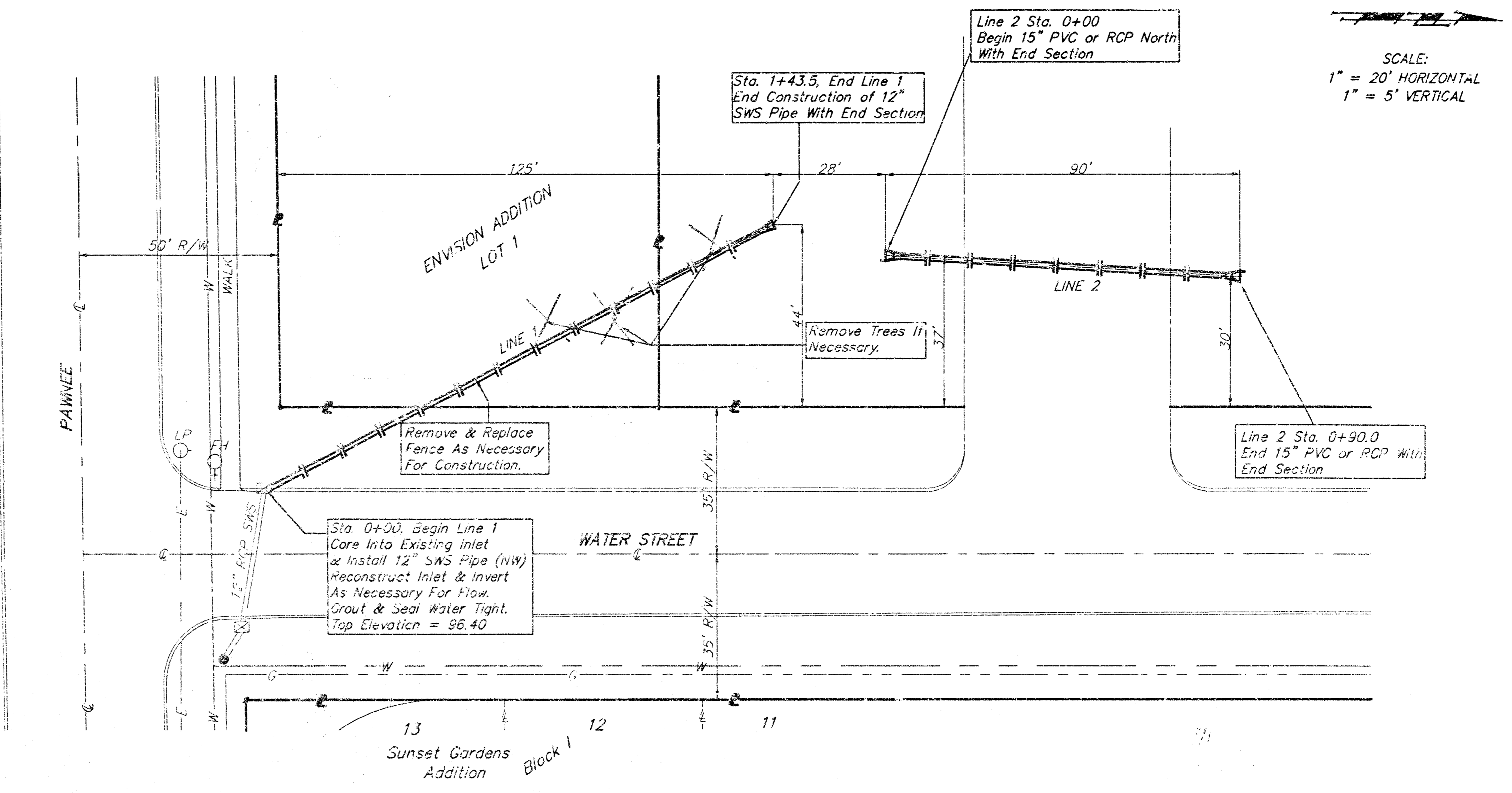
Installation, inspection and testing for this project is to be provided by a Licensed Consulting Engineering Firm under contract with the Owner/Developer. Said inspection to be in accordance with the City of Wichita standard construction engineering practices and certified by a Licensed Professional Engineer. No work shall be performed in dedicated easements or public right-of-way by the Contractor without such inspection nor shall any work be commenced without written authorization by the City Engineer. All Construction and Materials shall comply with the City of Wichita Specifications and Standards (on file and available in the City Engineer's Office).

Legal Description

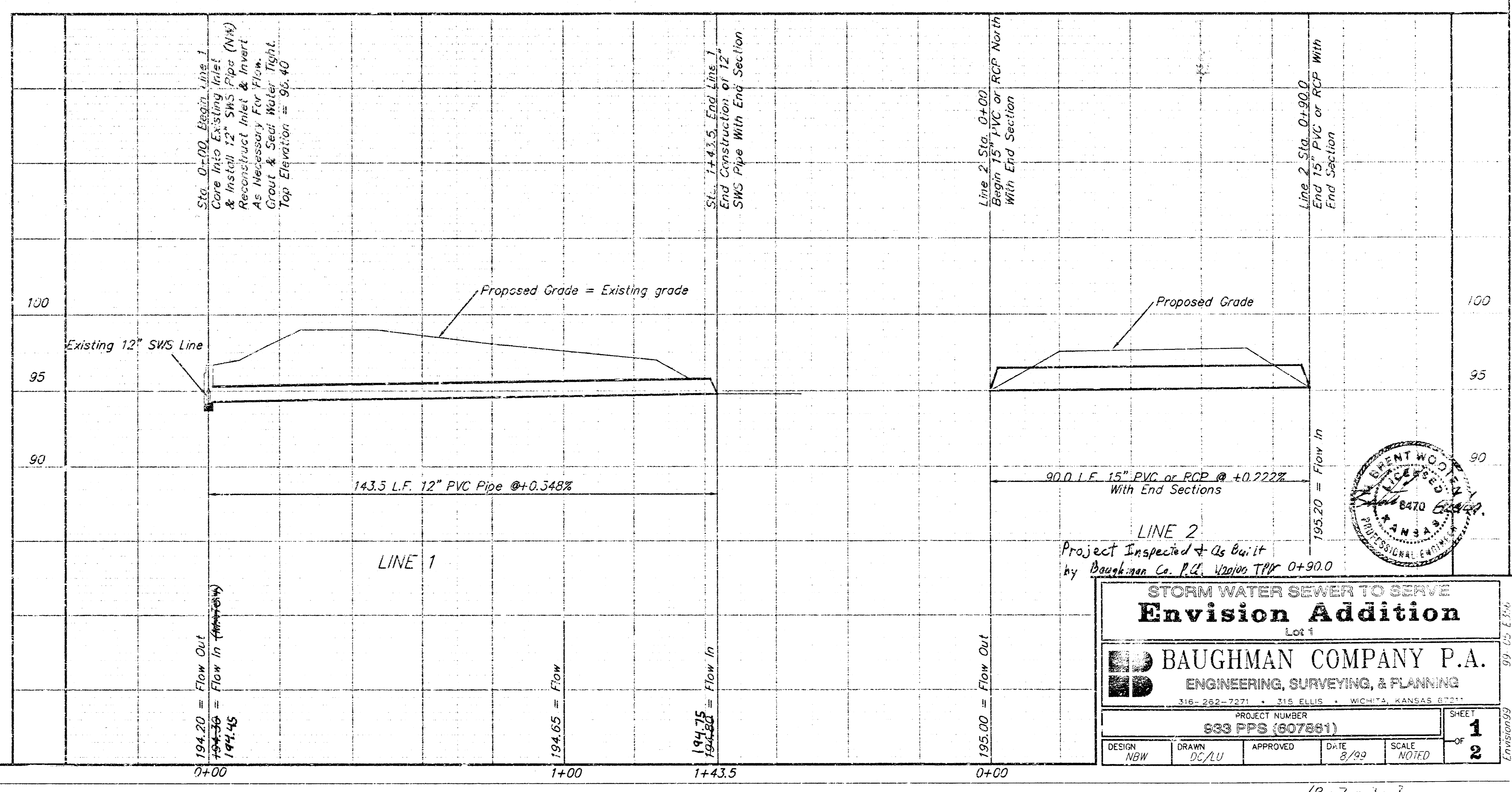
Lot 1, Block A, Envision Addition, Wichita Sedgwick County, Kansas.

Benchmark

COW BENCHMARK NW CORNER BROADWAY AND PAWNEE
 ELEV.=98.39 CITY DATUM



SCALE:
 1" = 20' HORIZONTAL
 1" = 5' VERTICAL



Project Inspected & As Built
 by Baughman Co. P.C. 12/09/99 0+90.0

STORM WATER SEWER TO SERVE
Envision Addition
 Lot 1

BAUGHMAN COMPANY P.A.
 ENGINEERING, SURVEYING, & PLANNING
 318-292-7271 • 318 ELLIS • WICHITA, KANSAS 67201

PROJECT NUMBER
933 PPS (607861)

DESIGN: NEW DRAWN: JCL/ALU APPROVED: DATE: 8/99 SCALE: NOTED

SHEET **1** OF **2**

