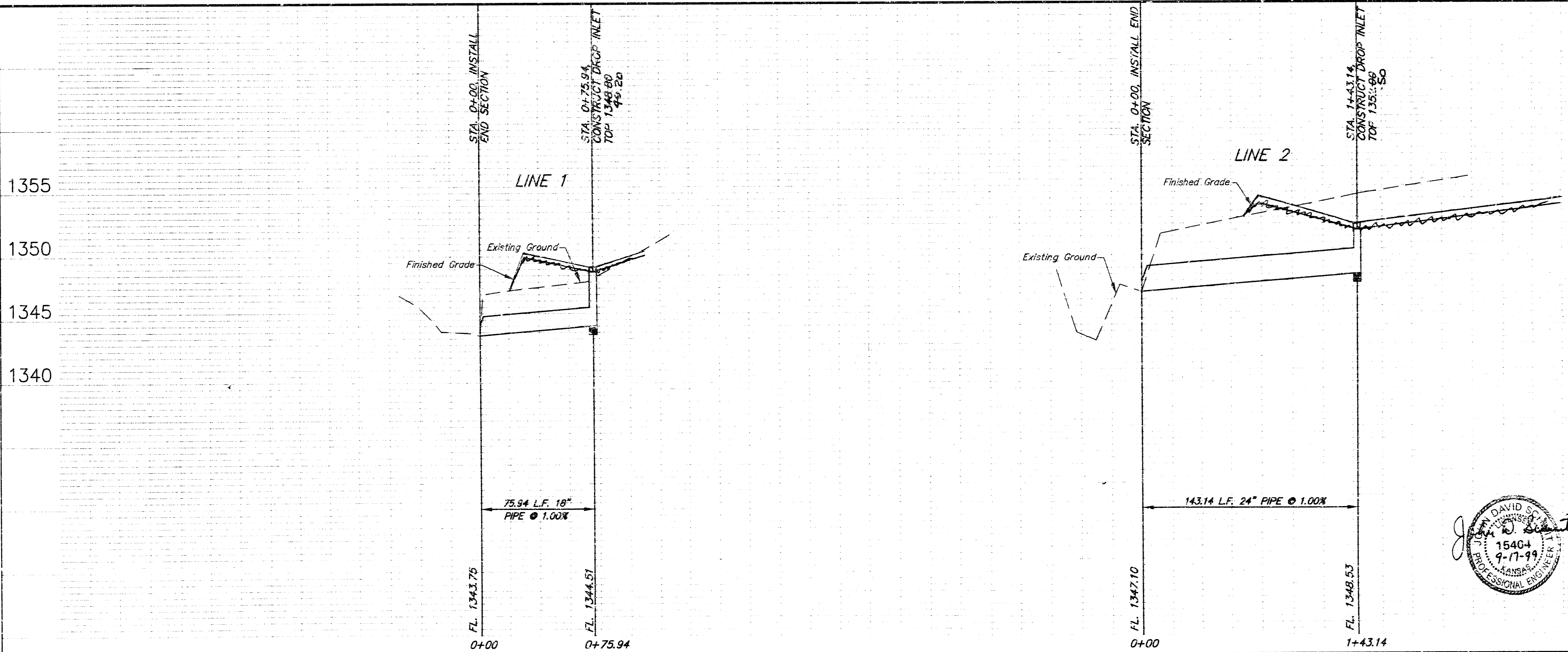
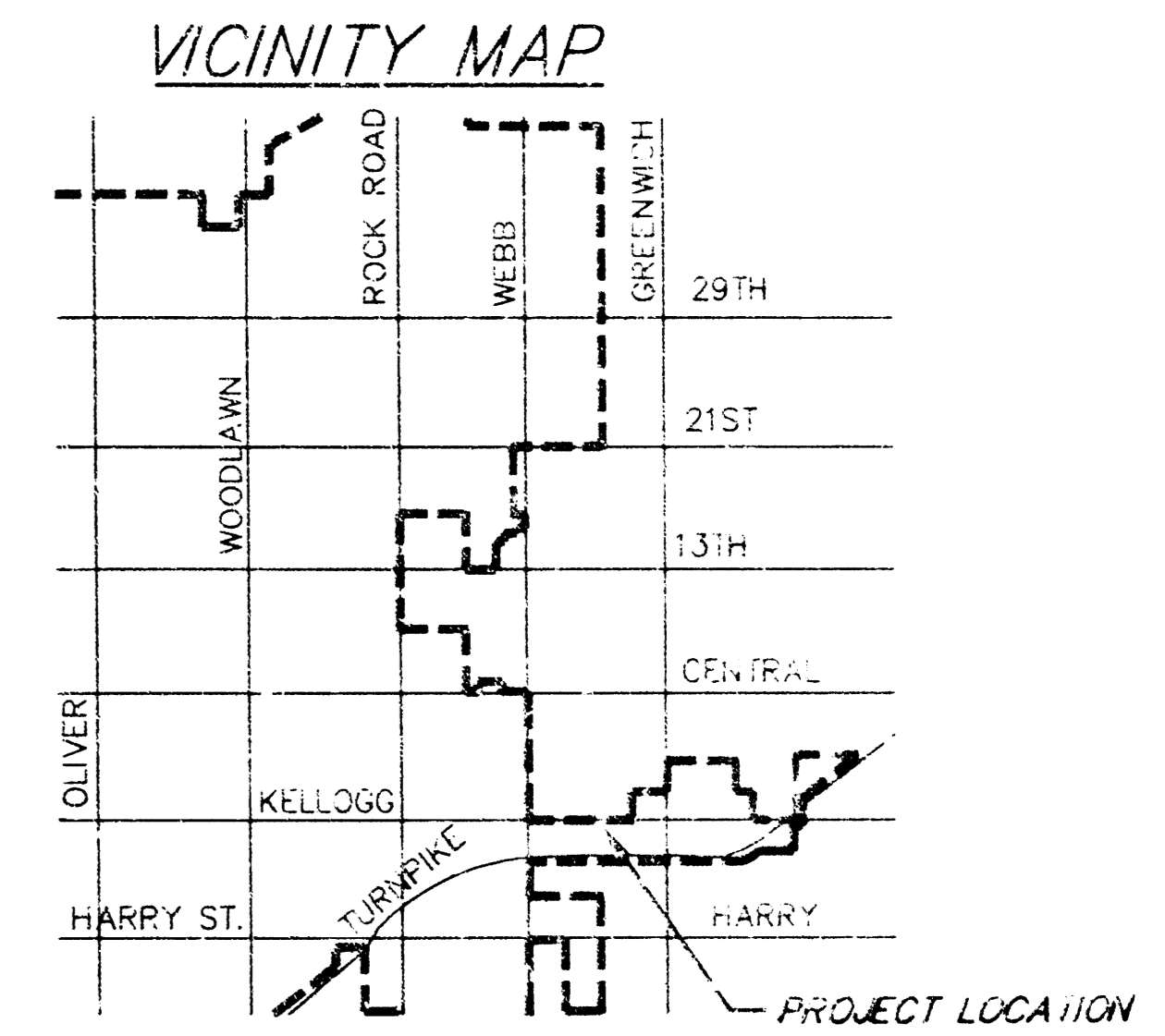
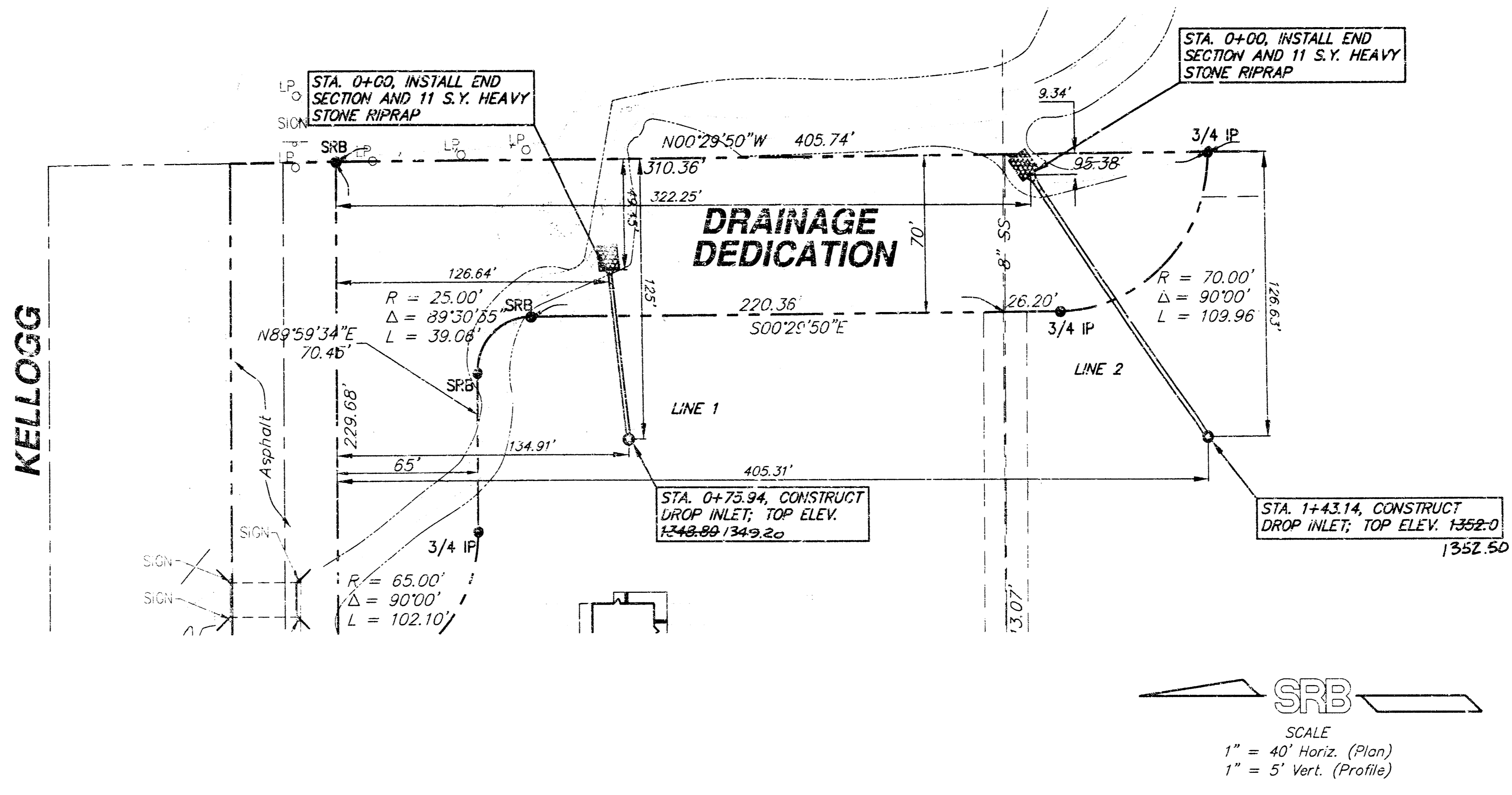
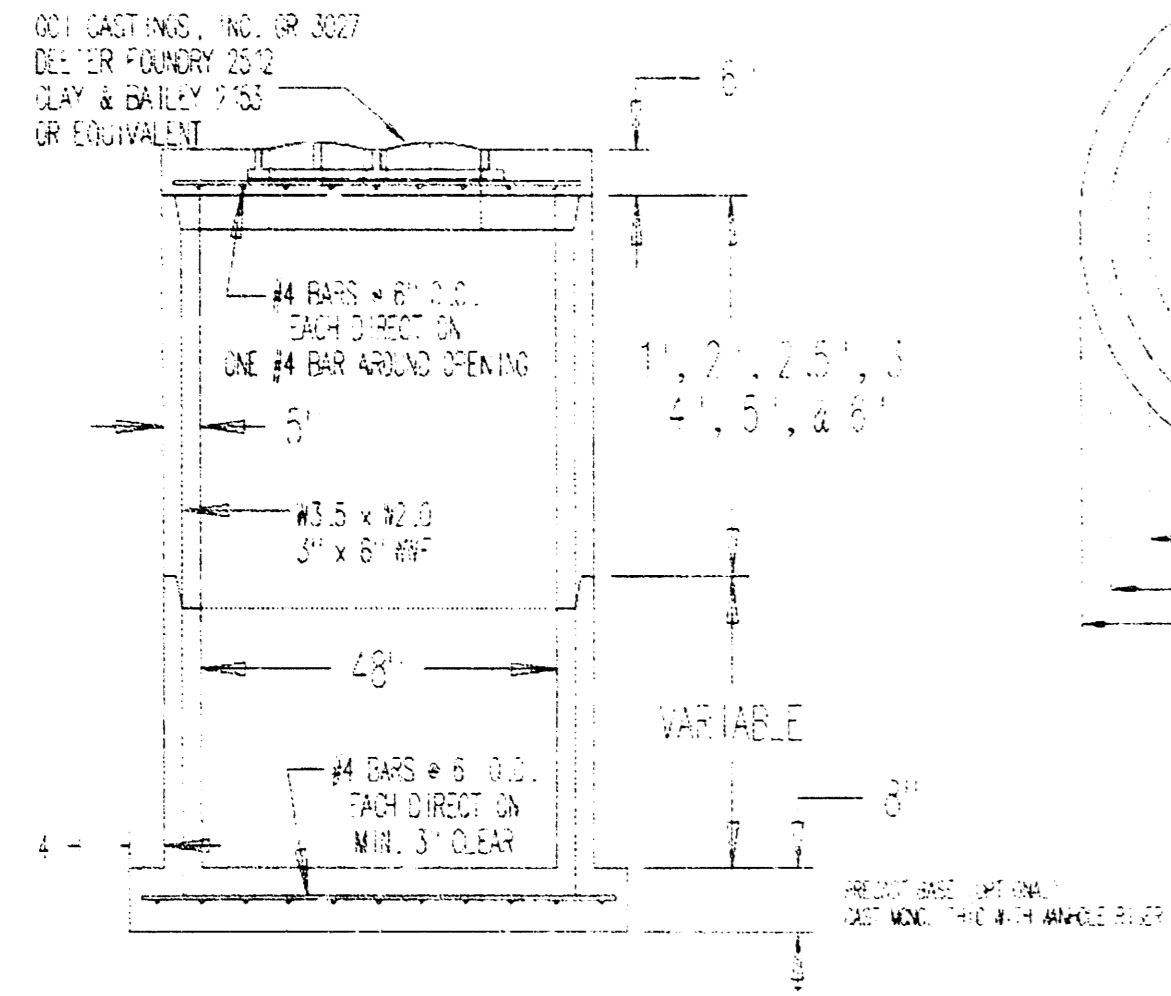


APPROVED AS NOTED  
BY CITY ENGINEER OF WICHITA

Sanitary Sewers \_\_\_\_\_  
Storm Sewers VRH 9/16/99  
Driveway Approaches \_\_\_\_\_  
Water Mains \_\_\_\_\_  
Paving \_\_\_\_\_

NOTE TO CONTRACTORS  
Inspection and testing for this project are to be provided by a Licensed Consulting Engineering Firm under contract with the Owner/Developer. Said inspection to be in accordance with the City of Wichita standard construction engineering practices and certified by a Licensed Professional Engineer. No work shall be performed in dedicated easements or public right-of-way by the Contractor without such inspection, nor shall any work be commenced without written authorization by the City Engineer.

1. ALL MANHOLES MEET CURRENT ASTM C419 SPECIFICATIONS
2. ALL REINFORCING IS GRADE 60
3. JOINTS BETWEEN MANHOLE SECTIONS TO BE SEALED WITH TWO LAYERS OF EXCELLOD BUTYL RUBBER JOINT MASTIC MEETING CITY OF WICHITA TYPE P MANHOLE SPECIFICATIONS



BOOKED  
6-3-00  
MCC  
D-262

As-Builts  
11/20/99  
M. Stump

REV. 9-16-99 TOP OF INLET SCR

LOTS 1-3, BLK. 3, WIEDEMANN BUS. PARK  
STORM SEWER PROFILES  
WICHITA, KANSAS

SRB 924 NORTH MAIN WICHITA, KANSAS 67203 316-264-8008 FAX 264-4621  
http://www.feast.com/~srb E-Mail: srb@feast.com

SAVOY, RUGGLES & BOHM, P.A.  
ENGINEERING & SURVEYING

PROJECT NUMBER  
936-PPS (607861)

|        |     |       |     |         |        |               |          |
|--------|-----|-------|-----|---------|--------|---------------|----------|
| DESIGN | TCP | DRAWN | JTS | UTILITY | REVIEW | DATE          | REVISION |
|        |     |       |     |         |        | Sept. 3, 1999 | 9-16-99  |

12 04 05 S4