

STORM WATER SEWER IMPROVEMENTS TO SERVE  
Lot 2 of Block C, Barrington Corner 2nd Addition

**STATE BANK OF COLWICH**

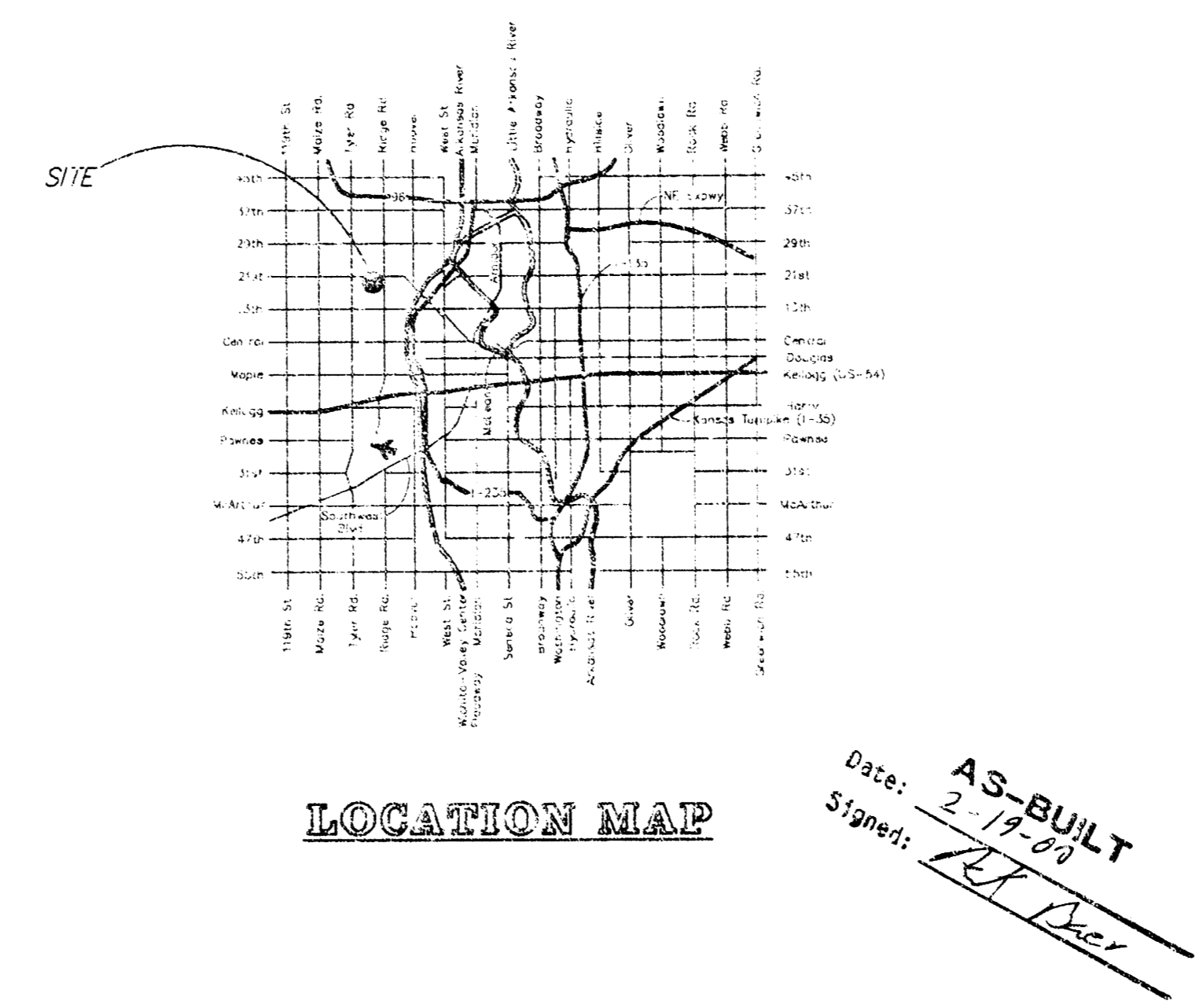
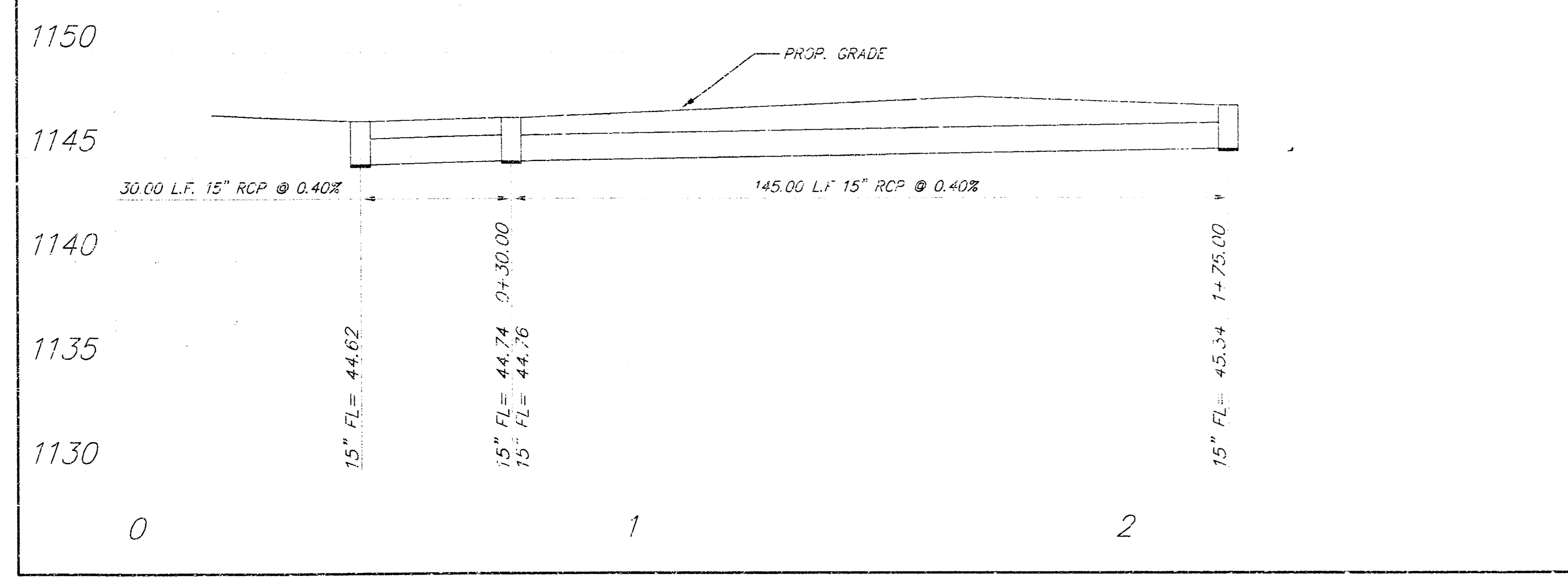
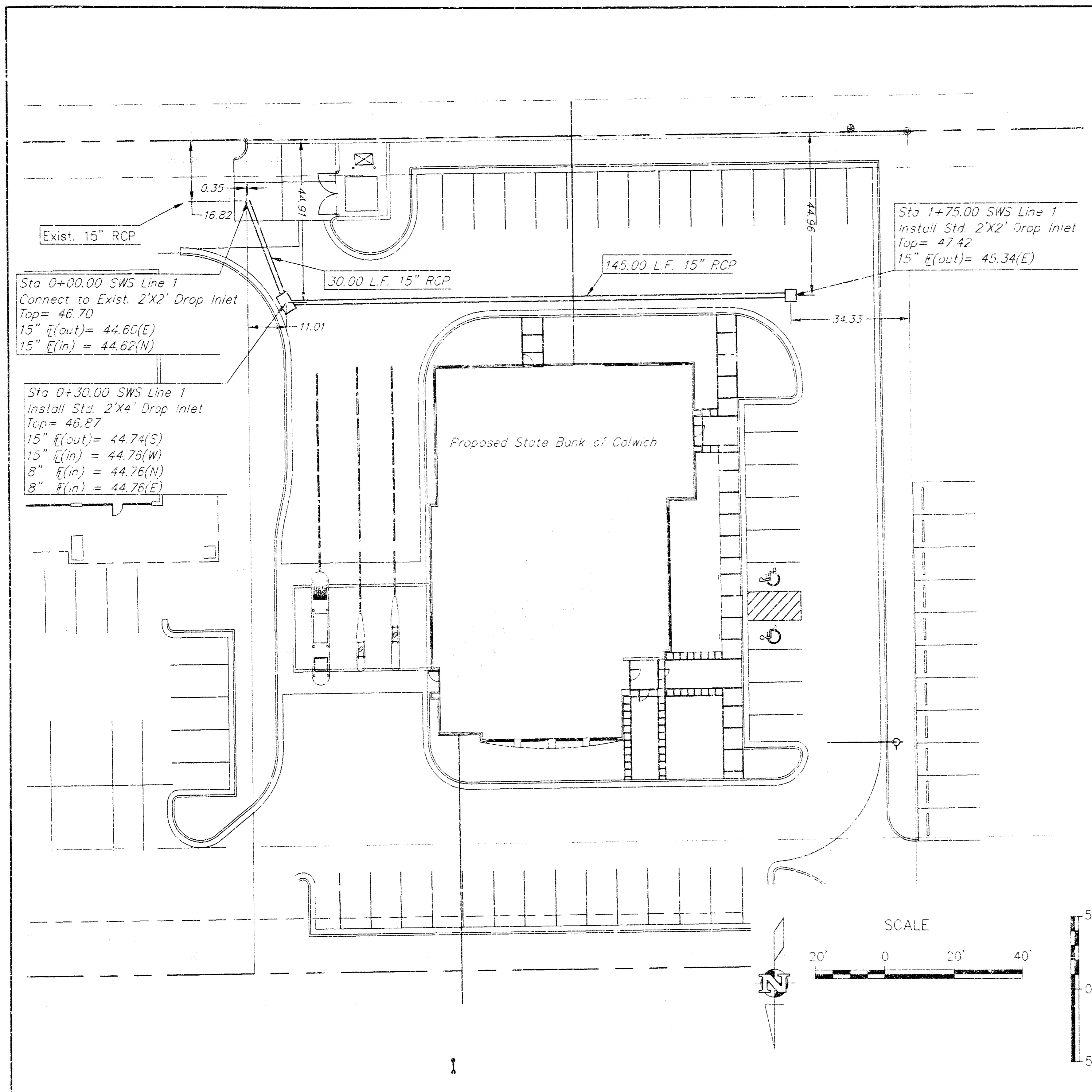
Project Number  
**947 PPS (807881)**

CITY OF WICHITA, KANSAS  
Michael E. Lindebak, P. E., City Engineer

**GENERAL NOTES**

- Contractor will be required to provide notice to utility companies a minimum of twenty-four (24) hours prior to any excavation, as follows:  
Kansas One-Call 687-2470  
The Contractor must notify the following in case of an emergency:  
Coblesvision 262-4270  
or 263-2061  
K.P.L. Gas Service Company 383-8650  
Kansas Gas & Electric Company 383-8600  
Peoples Natural Gas 342-8811  
or 1-800-303-0357  
Southwestern Bell Telephone Company 1-371-2611  
City of Wichita Water Department 268-4908  
City of Wichita Sewer Department 268-4071
- Exist. utilities and their locations, as shown on the plans, represent the best information obtainable for design. Location information has been obtained from the various utility companies and is either from company record drawings or company-provided field locations. The Contractor will be required to work around existing utilities which do not conflict with proposed construction.
- The Contractor to verify utility locations prior to construction of this project.
- Utility service and installation shall be coordinated with the respective utility owners. Contacts are:  
K&E Gas Steve Orth 261-8867  
K.G. & E. Miles Capps 251-6434  
Wichita Water Paul Bryant 268-4555  
Steve Palmer 268-4908  
Southwestern Bell Jim Tobin 268-2759
- All areas disturbed by construction shall be seeded with rye Rebel II Fescue grass at a rate of 350 lbs./acre immediately following construction in that area.
- Traffic affected by the construction of this project shall be handled in accordance with the latest edition of the Manual on Uniform Traffic Control Devices.
- All lawn/turf areas disturbed by construction of proposed improvements shall be restored with the same grass/sod as existing. Restoration of disturbed areas shall include, but not be limited to, top soil preparation, seeding, mulch and/or reseeded. All seeding/sodding work shall be in accordance with the City of Wichita standard specifications and the City of Wichita administrative regulation No. AR78 which governs cleanup and replacement following construction. All costs for this work shall be subsidiary to the lump sum price bid for "Site Restoration."

BOOKED  
6-6-00  
MCG  
D-262



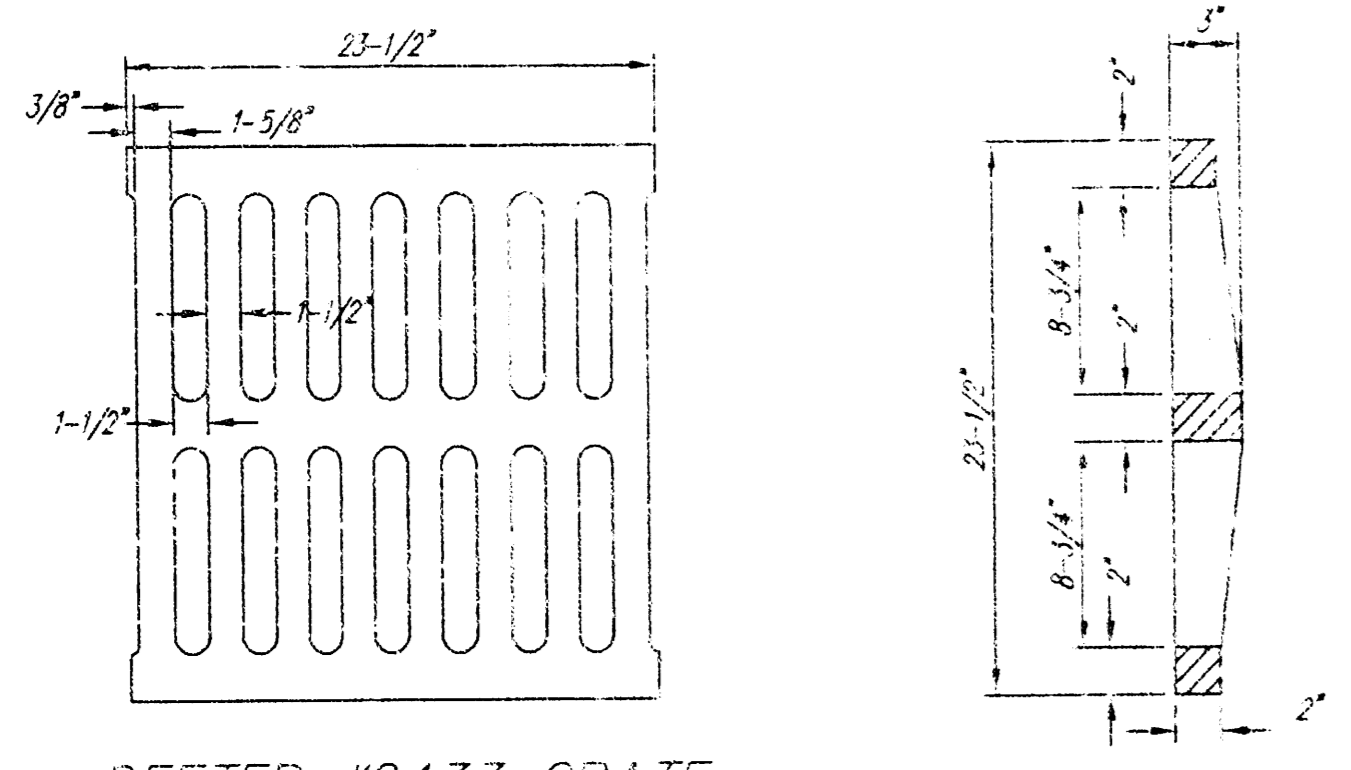
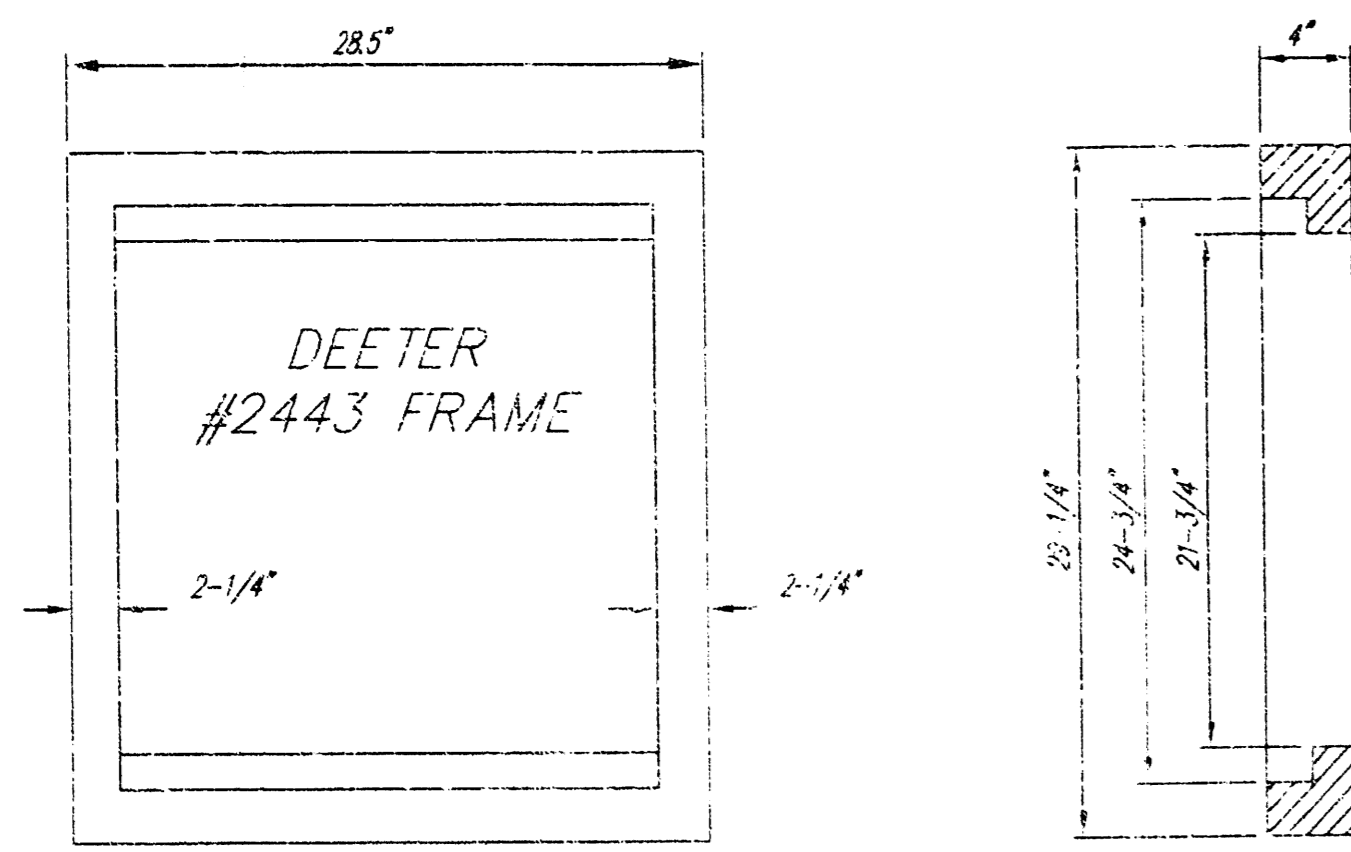
AS-BUILT  
Date: 2-17-00  
Signed: [Signature]

**BENCHMARK:**

Top SW LP Anchor Bolt  
Near SW Corner McDonalds  
Elev. = 146.64 (City Datum)

APPROVED AS NOTED BY CITY ENGINEER OF WICHITA  
STORM SEWERS URH 11/18/99  
Inspection and testing for this project are to be provided by a Licensed Consulting Engineering Firm under contract with the Owner/Developer. Soil inspection is to be in accordance with the City of Wichita standard construction engineering practices and certified by a Licensed Civil Engineer. No work shall be performed in dedicated easements or public right-of-way by the Contractor without such inspection nor shall work be commenced without written authorization by the City Engineer. All construction and materials shall comply with the City of Wichita Specifications and Standards (as file and available in the City Engineer's Office).

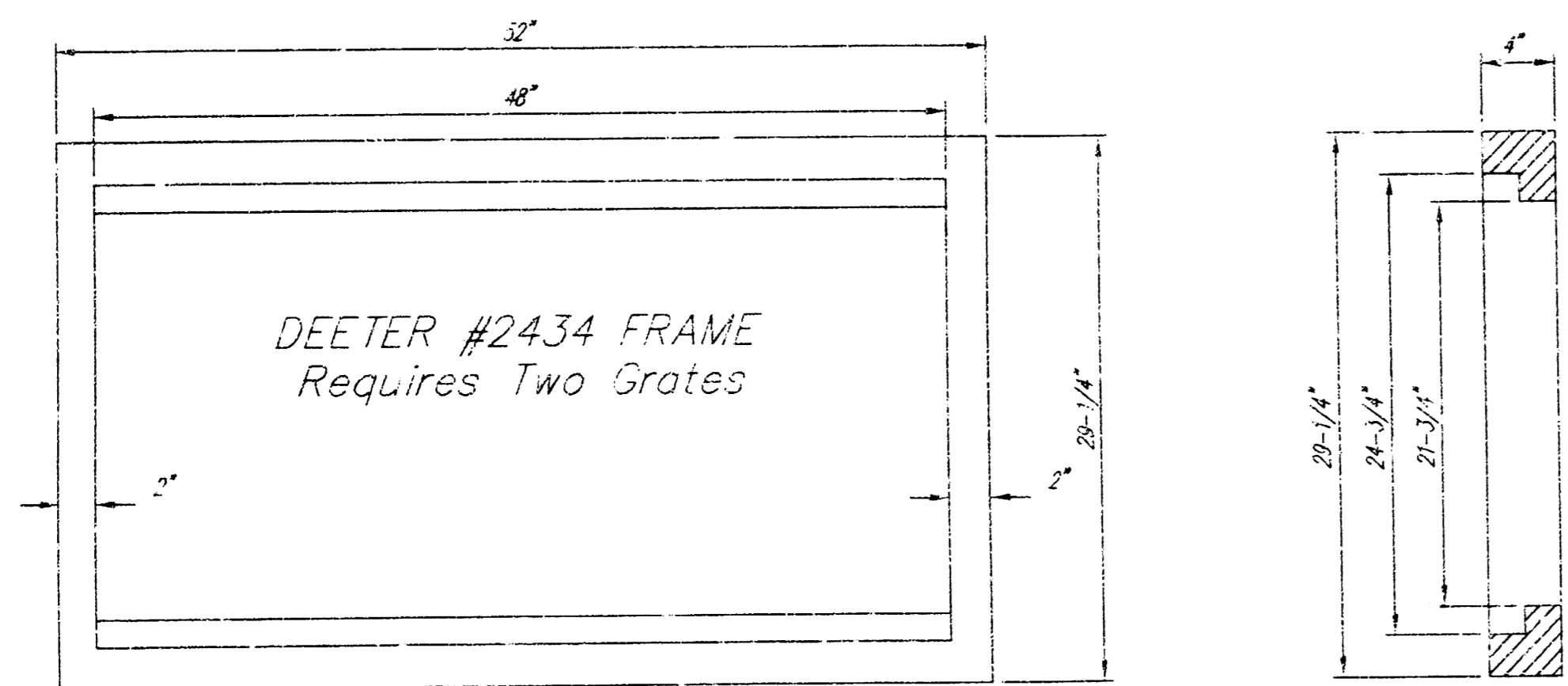
DESIGN db	DRAWN dd	FILE swsco	DATE 10/99	SCALE 1"=20'	PROJECT NUMBER <b>947 PPS (807881)</b>	A.I. NO. 92224	SHEET <b>1</b> OF <b>2</b>
					State Bank of Colwich <b>SWS &amp; PROFILE</b> Wichita, Kansas		



DEETER #2433 GRATE

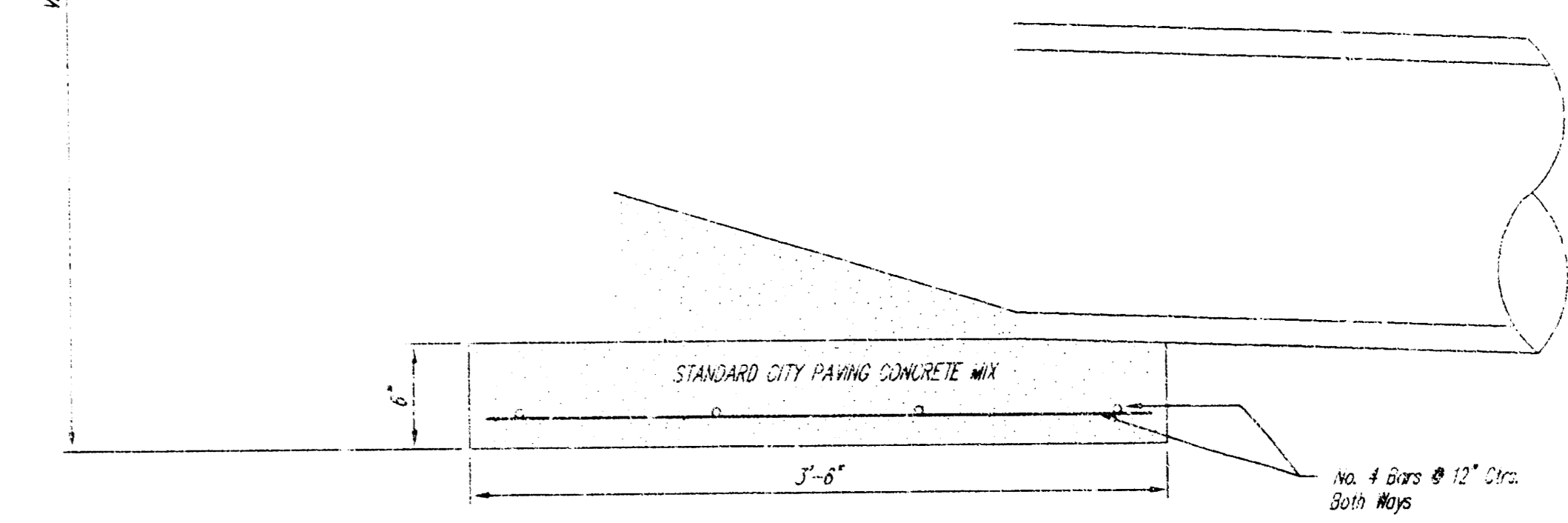
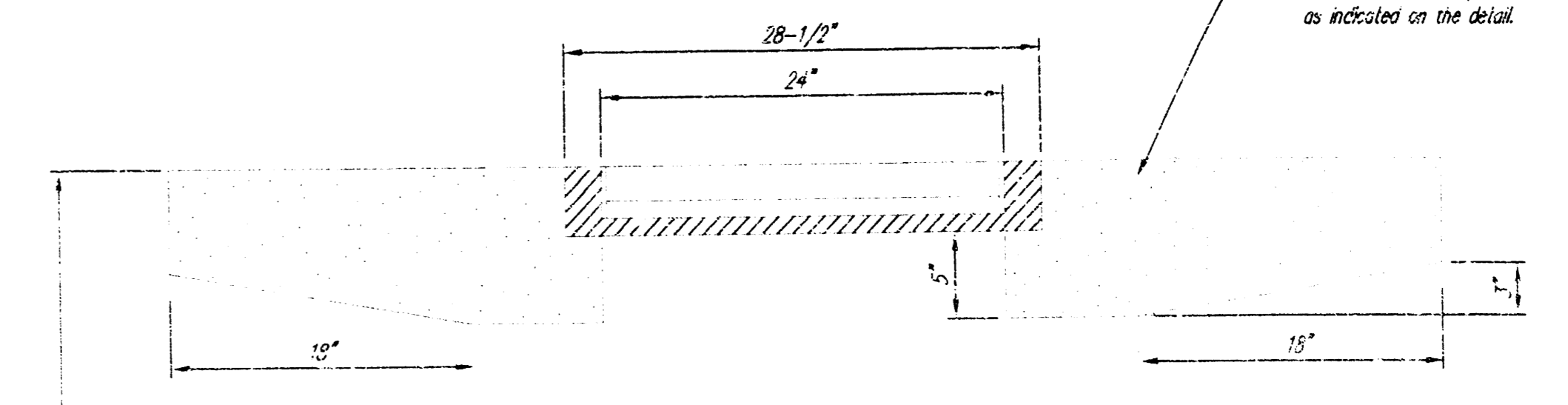
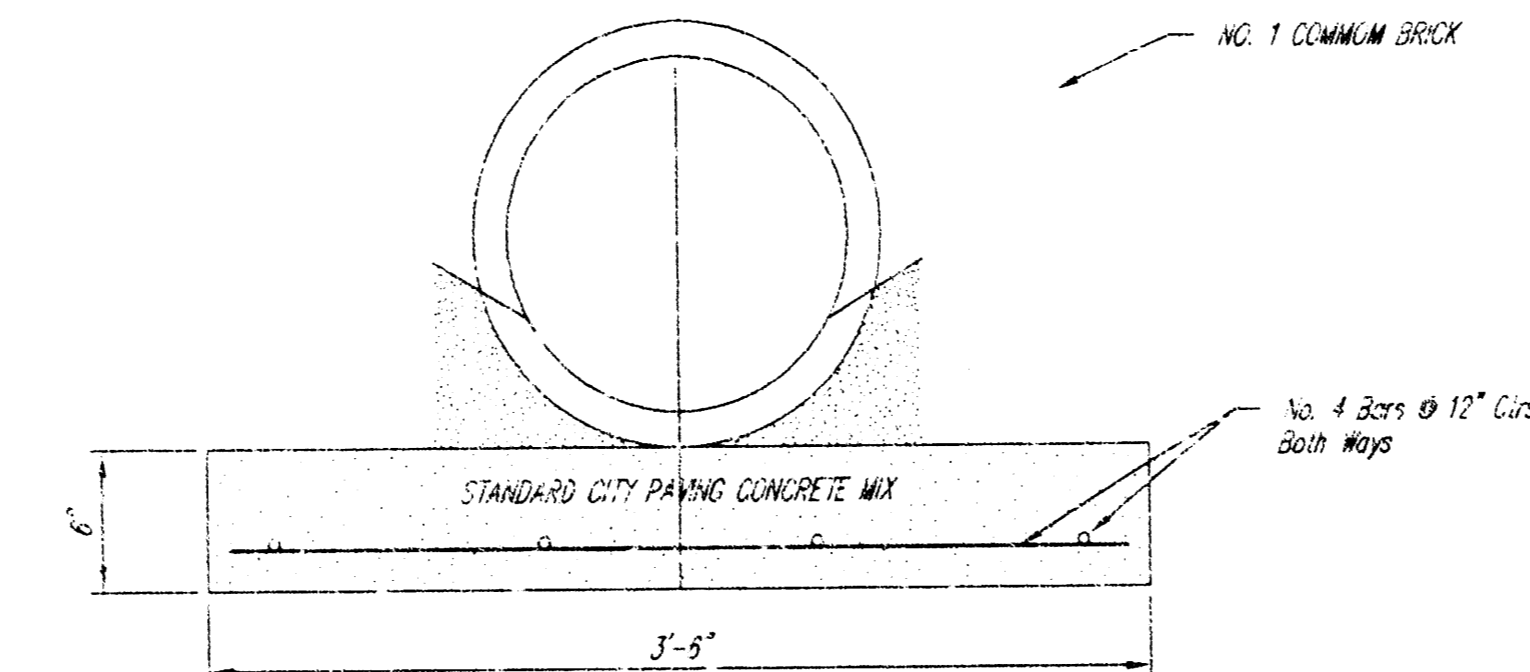
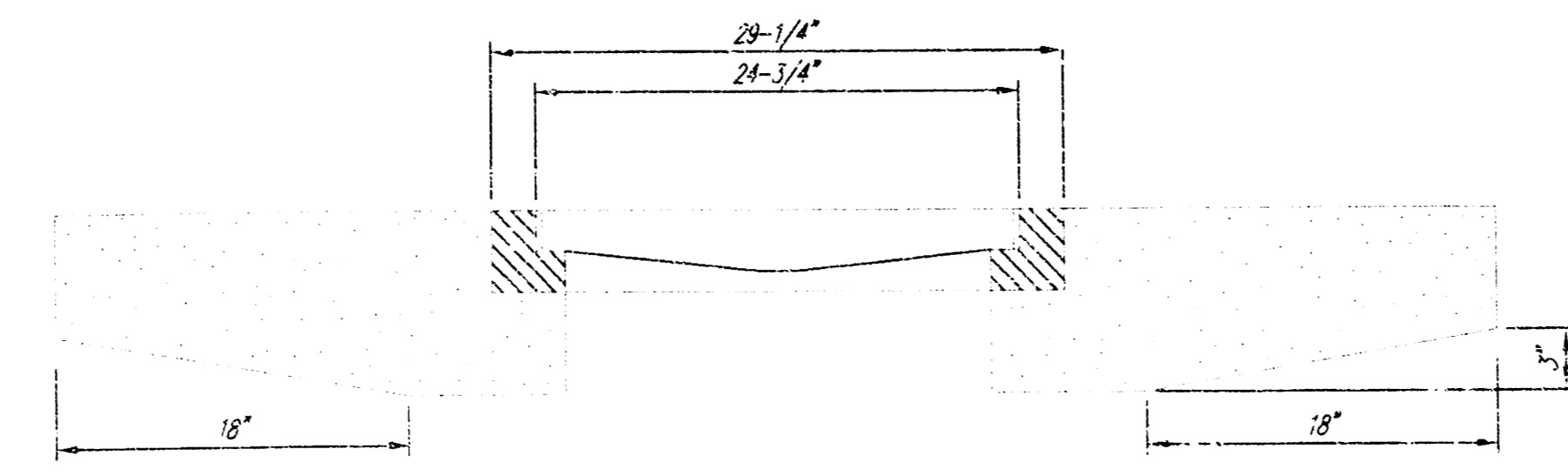
24" x 24" Frame and Grate Detail

NOTE: Grates shall be imprinted on the top surface with "CITY OF WICHITA" using letters at least 1" in height. Other marking methods may be approved by the engineer.

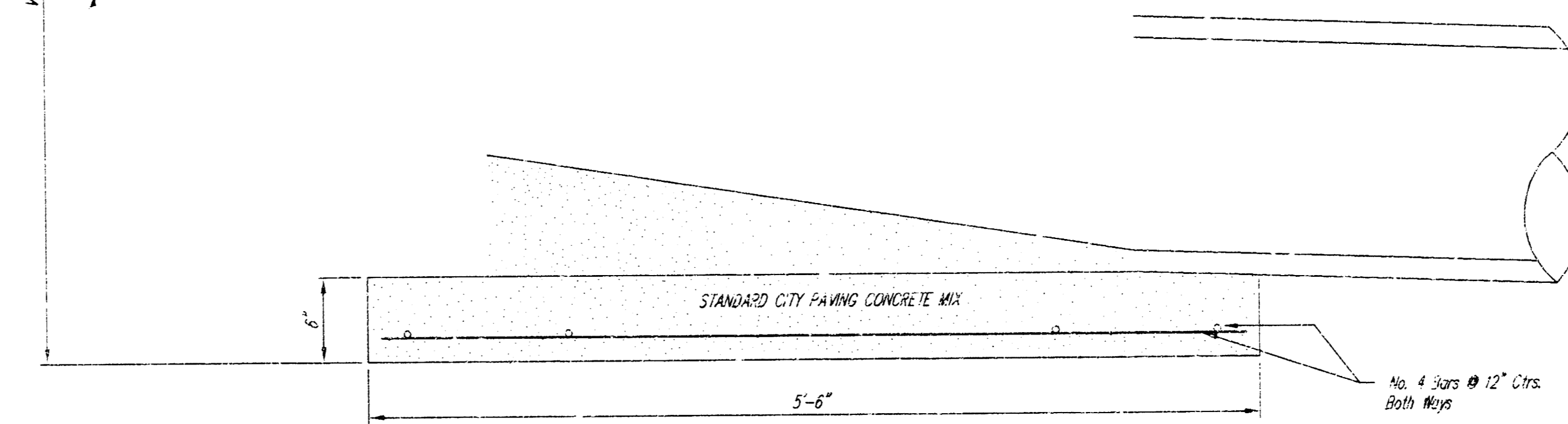
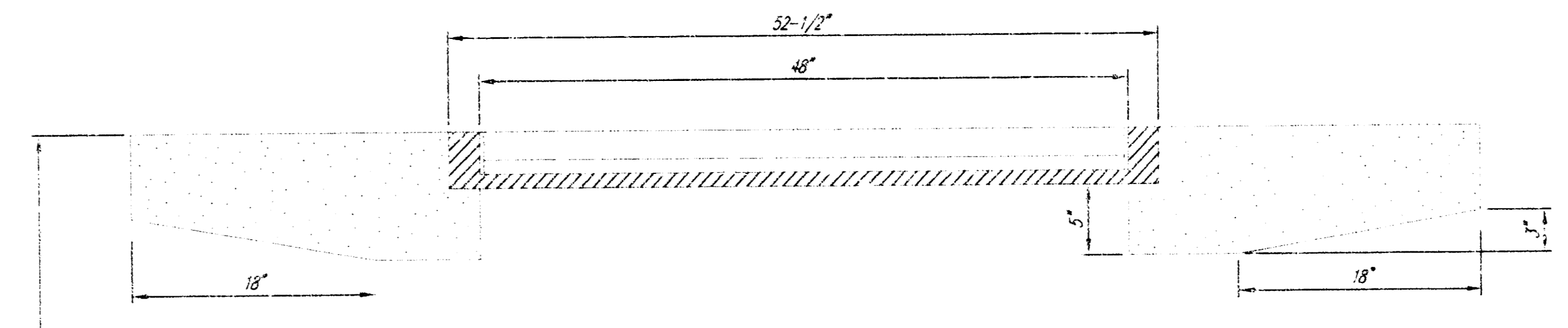


DEETER #2434 FRAME  
Requires Two Grates

Double 24" x 24" Frame Detail



NOTE: Concrete apron shall be constructed around the inlet when inlet is located in an ungridded area. Where the inlet is adjacent to pavement, the pavement thickness shall be tapered to the inlet in 18 inches as indicated on the detail.



<p>THE CITY OF WICHITA</p> <p>CITY ENGINEER'S OFFICE CITY HALL - SEVENTH FLOOR 405 NORTH MAIN STREET WICHITA, KANSAS 67202 (316) 268-4500 (316) 268-4114 FAX</p>	<p><b>DROP INLET</b> 3' X 2 1/2' X 4'</p>		
	<p>M. E. LINDEBAK P.E. - CITY ENGINEER</p>		
	<p>PROJECT NUMBER 797 PPS 607851</p>	<p>INDEX CODE</p>	
	<p>DATE MAR 96</p>	<p>SHEET 2 OF 2</p>	

DROPINLT.DWG