

STORM WATER SEWER IMPROVEMENTS TO SERVE CARRIAGE HOUSE PLAZA FOURTH ADDITION LOT 2

Project Number
950 PPS(607881)

CITY OF WICHITA, KANSAS
Michael E. Lindebak, P. E., City Engineer

GENERAL NOTES

1. Contractor will be required to provide notice to utility companies a minimum of twenty-four (24) hours prior to excavation, as follows:

Kansas One-Call	687-2470
-----------------	----------

The Contractor must notify the following in case of an emergency:

Cablevision	262-4270
or	263-2061
K.P.L. Gas Service Company	383-8650
Kansas Gas & Electric Company	383-5600
Peoples Natural Gas	942-8811
or	1-800-303-0357
Southwestern Bell Telephone Company	1-571-2611
City of Wichita Water Department	263-4908
City of Wichita Sewer Department	268-4071

2. Exist. utilities and their locations, as shown on the plans, represent the best information obtainable for design. Location information has been obtained from the various utility companies and is either from company record drawings or company-provided field locations. The Contractor will be required to work around existing utilities which do not conflict with proposed construction.

3. The Contractor to verify utility locations prior to construction of this project.

4. Utility service and installation shall be coordinated with the respective utility owners. Contacts are:

K&F Gas	Steve Orth	261-6867
K.G. & E.	Miles Capps	261-6434
Wichita Water	Faul Bryant	268-4555
	Steve Palmer	268-4908
Southwestern Bell	Jim Tobin	268-2759

5. All areas disturbed by construction shall be seeded with rye Rebel II Fescure grass at a rate of 350 lbs./acre immediately following construction in that area.

6. Traffic affected by the construction of this project shall be handled in accordance with the latest edition of the Manual on Uniform Traffic Control Devices.

7. All lawn/turf areas disturbed by construction of proposed improvements shall be restored with the same grass/sod as existing. Restoration of disturbed areas shall include, but not be limited to, top soil preparation, seeding, mulch and/or reseeded. All seeding/sodding work shall be in accordance with the City of Wichita standard specifications and the City of Wichita administrative regulation No. AR78 which governs cleanup and replacement following construction. All costs for this work shall be subsidiary to the lump sum price bid for "Site Restoration."

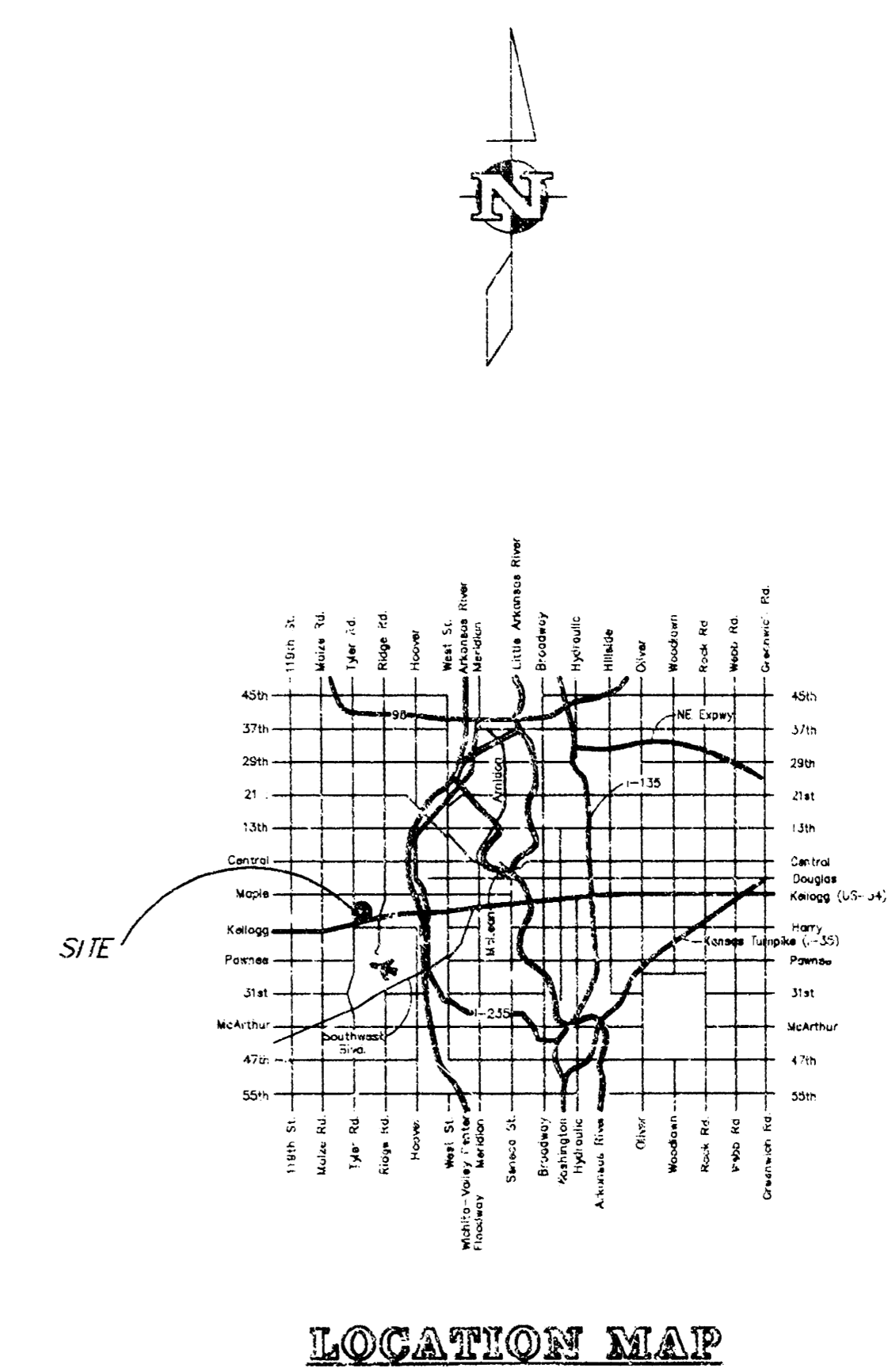
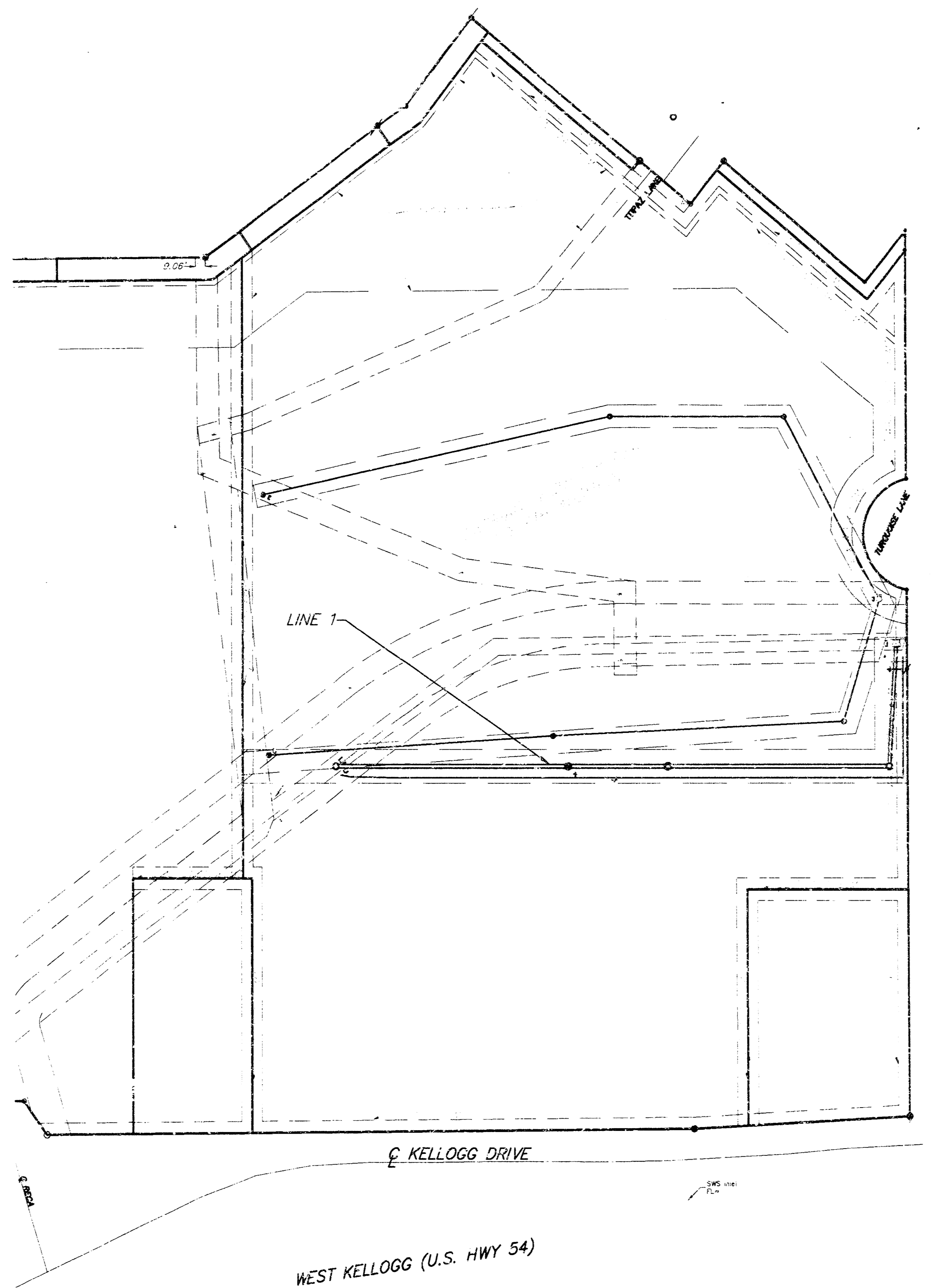
BENCHMARK

FK nail in pavement, 55' E. & 124' S. of N.E. corner Home Depot store. Elev.=144.40

PK nail in pavement, 56' E. & 128.5' S. of S.E. corner Home Depot store. Elev.=141.21

INDEX:

1. Title Sheet
2. Plan and Profile Sta. 0+00 to 5+12.21
3. Plan and Profile of Sta. 5+12.21 to 8+20.21



APPROVED AS NOTED BY CITY ENGINEER OF WICHITA

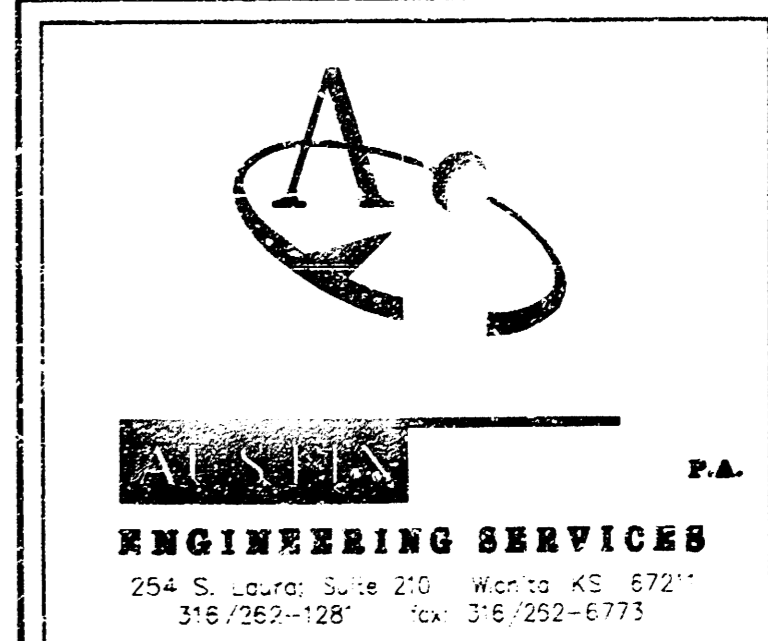
STORM SEWERS As Noted

Inspection and testing for this project are to be provided by a Licensed Consulting Engineering Firm under contract with the Owner/Developer. Said inspection is to be in accordance with the City of Wichita standard construction engineering practices and certified by a Licensed Civil Engineer. No work shall be performed in dedicated easements or public right-of-way by the Contractor without such inspection nor shall work be commenced without written authorization by the City Engineer. All construction and materials shall comply with the City of Wichita Specifications and Standards (on file and available in the City Engineer's Office).

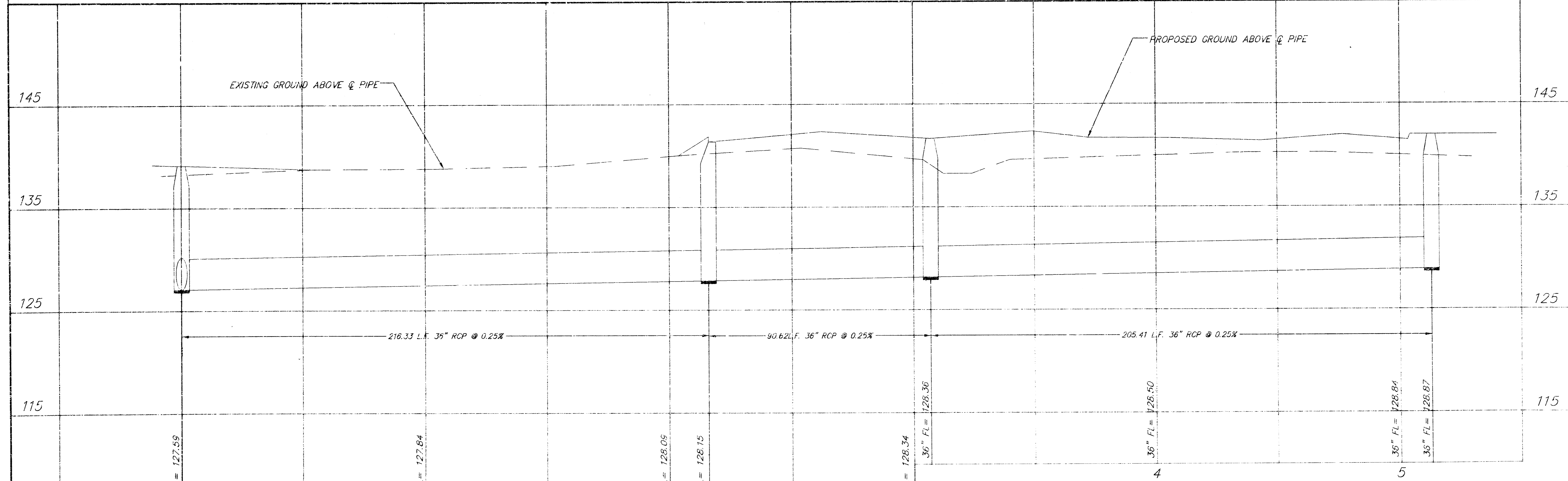
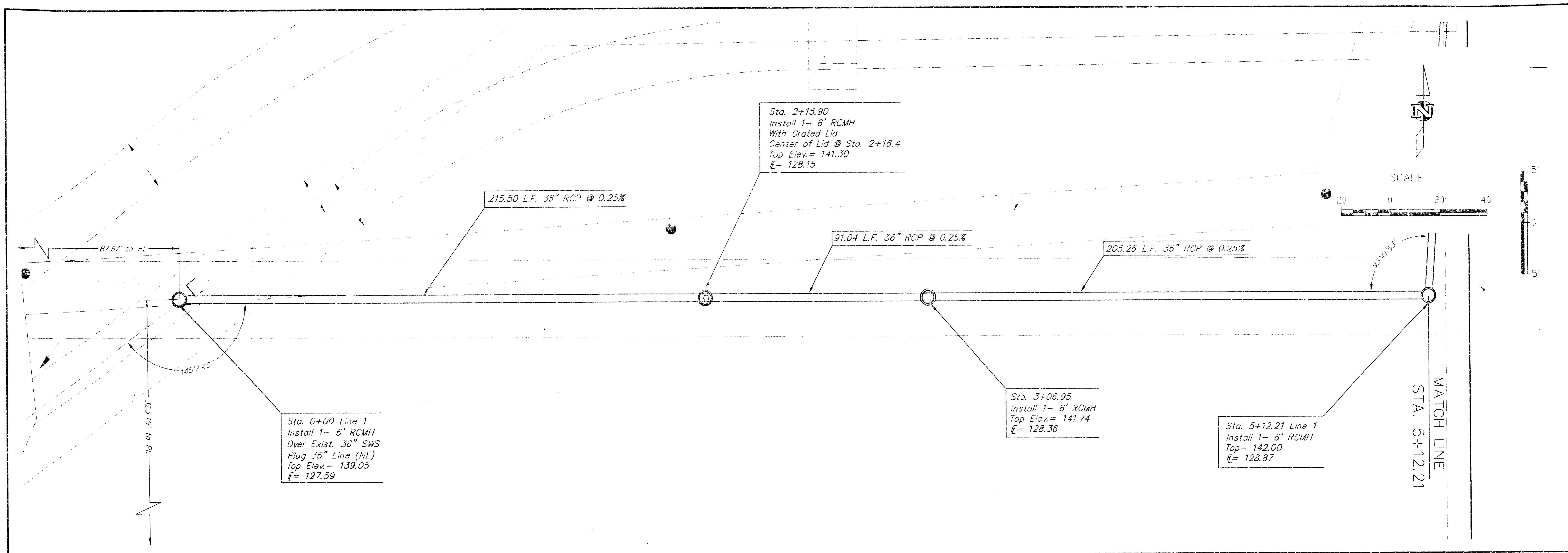
AS-BUILT
Date: 11/11/19
Signed: [Signature]

BOOKED
3:26:00
M.L.S.
D-155

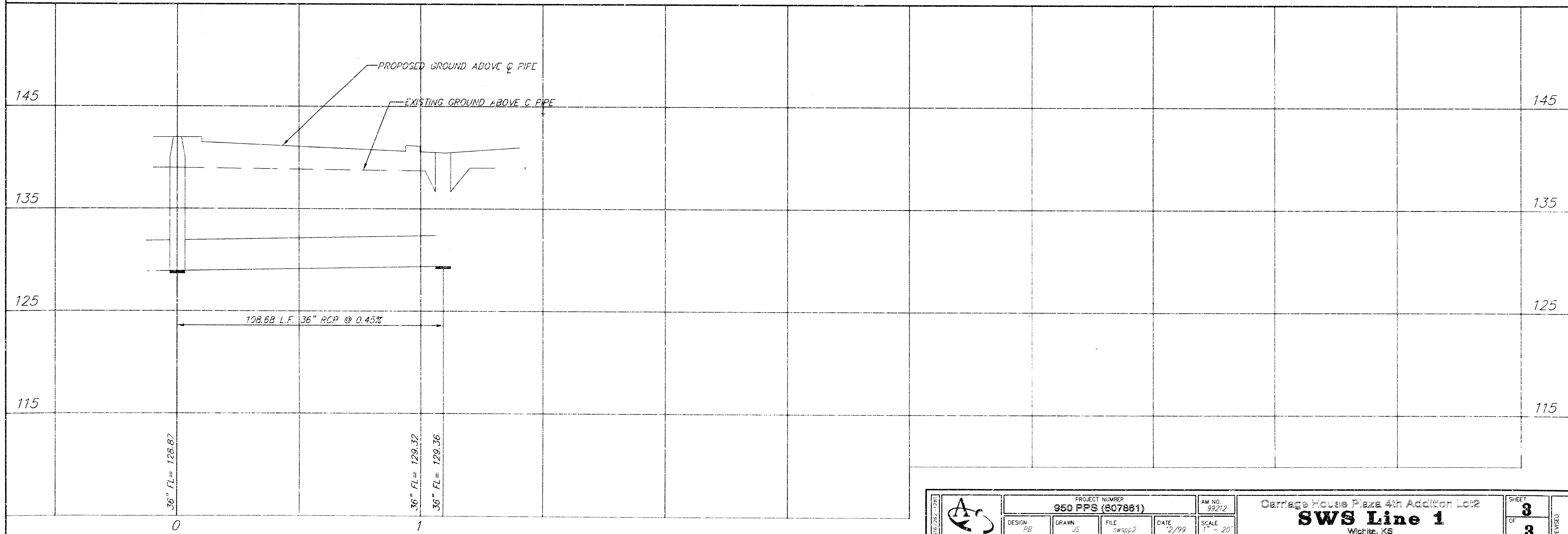
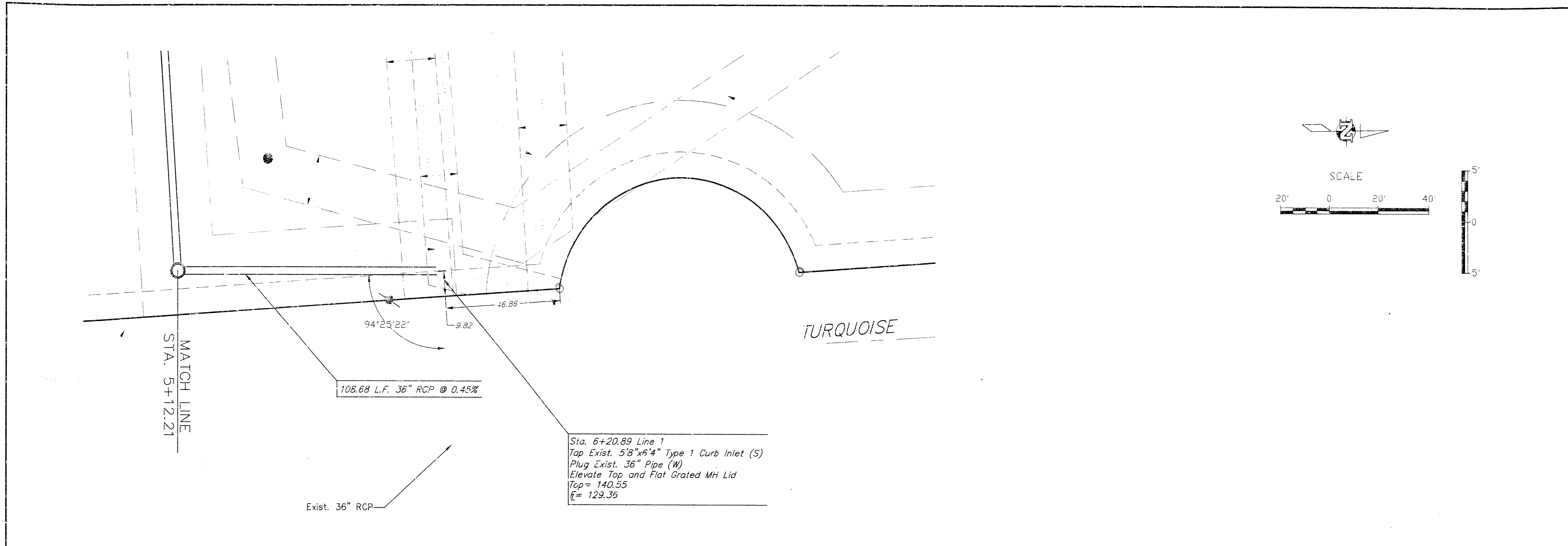
[Signature]
11/11/19



950 PPS
MICROFILM



	PROJECT NUMBER 950 PFS (607681)				AM. NO. 59272	SHEET 2 OF 3 REVISED
	DESIGN 7/99	DRAWN AS	FILE SWS01	DATE 7/99	SCALE 1" = 20'	
SWS Line 1 Wichita, KS						



	PROJECT NUMBER 950 PPS (607881)				AM. NO. 992/2	Carriage House Plaza 4th Addition Lot 2 SWS Line 1 Wichita, KS	SHEET 3
	DESIGN PB	DRAWN JS	FILE SWS002	DATE 2/99	SCALE 1" = 20'		OF 3