

STORM WATER SEWER TO SERVE L.R. Jones Third Addition

LOT 1

Private Project Number

981 PPS (607861)

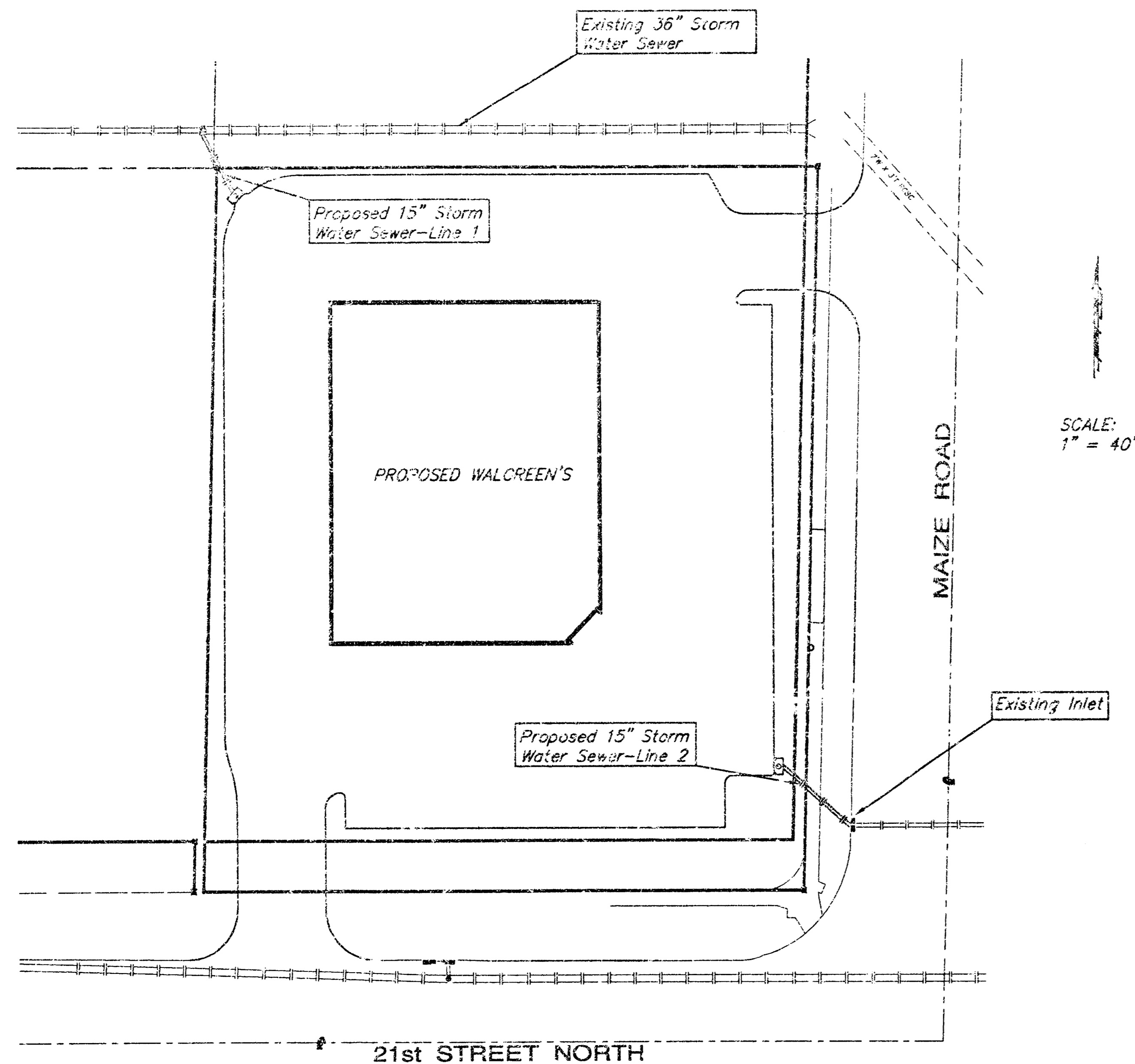
CITY OF WICHITA, KANSAS
Michael E. Lindebak, P.E. City Engineer

January 2000

STOKED
11-15-00
MEL
0-2-00

Index

| | |
|--------------------|---|
| Title Sheet | 1 |
| Plan/Profile Sheet | 2 |
| Detail Sheet | 3 |
| Copy Of Plat | 5 |



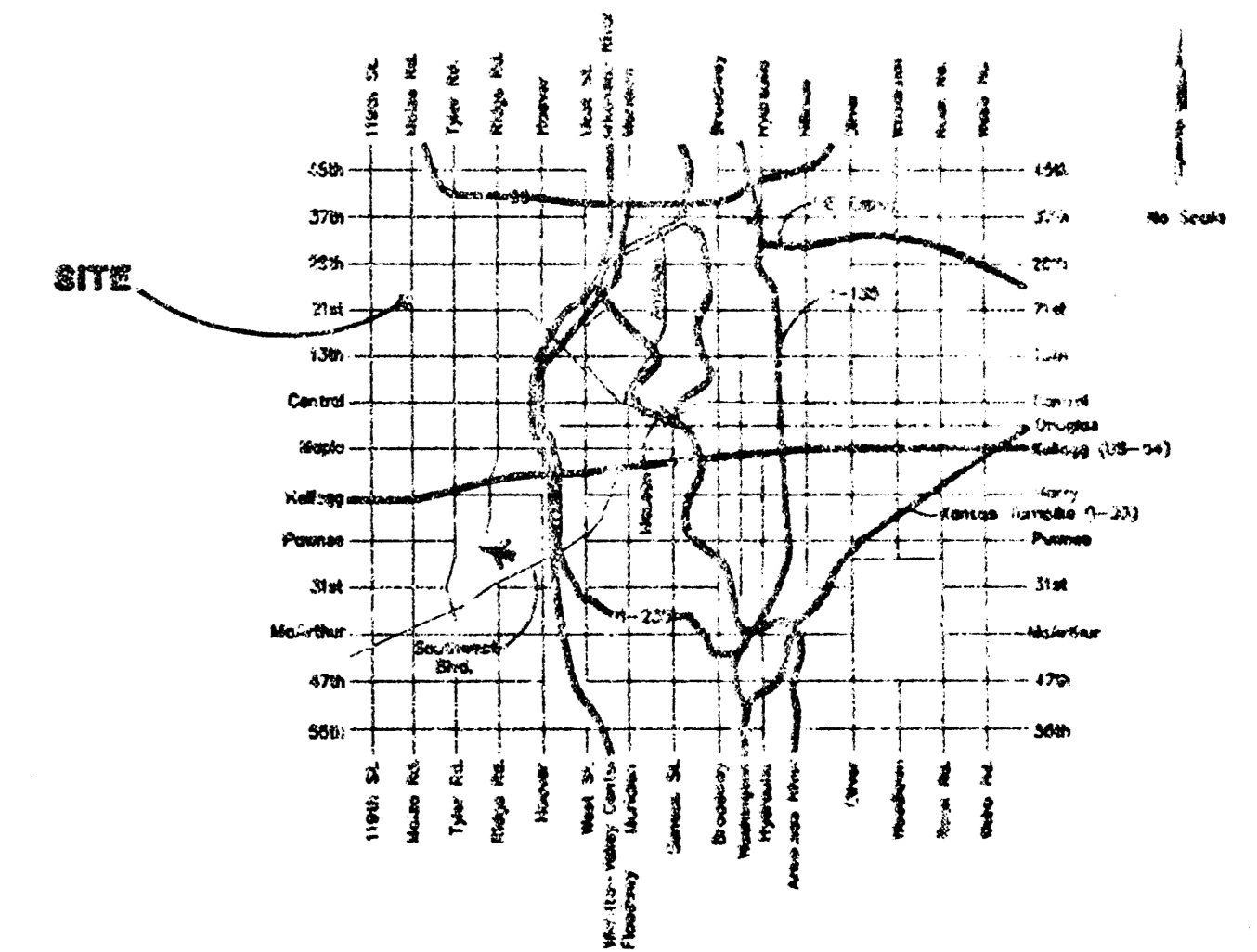
SCALE:
1" = 40'

General Notes

- Contractor will be required to provide notice to utility companies a minimum of forty-eight (48) hours prior to any excavation, as follows:

| | |
|---|------------|
| Kansas One-Call | 687-2470 |
| The Contractor must notify the following in case of an emergency: | |
| Multimedia Cablevision | 252-4270 |
| Kansas Gas Service Company | 283-8500 |
| Kansas Gas & Electric Company | 383-5850 |
| Peoples Gas Company | 942-7800 |
| Southwestern Bell Telephone Company | 1-571-2611 |
| City of Wichita Water Department | 268-4903 |
| City of Wichita Sewer Department | 268-4071 |
- Utility service lines, poles, valve boxes, meters, et cetera are to be adjusted as necessary by others prior to construction unless the plans specifically call for their adjustment by the Contractor or unless the plans specifically identify a utility to be adjusted by its owner during construction. Existing utilities and their location, as shown on the plans represent the best information obtainable for design and shall be field verified. The contractor will be required to work around existing utilities within the right-of-way which do not conflict with proposed construction.
- Trees and shrubs in public right-of-way which are in direct conflict with proposed new construction shall be removed by the Contractor with the Engineer's approval. Trees and shrubs which are not in direct conflict with proposed new construction shall be saved and protected from damage.
- Contractor shall not start work on the project until the project inspector is assigned to the project and is present on the site. Any work done without inspection will be required to be uncovered for inspection.
- Rubble from the removal of miscellaneous structures and excess excavation which is to be wasted shall be disposed of on site to be provided by the Contractor. These sites shall be approved by the Engineer as to suitability, appearance and site location. Locations that, in the opinion of the Engineer, will leave an unsightly appearance will not be approved. All disposal sites must be approved by the Kansas Department of Health and Environment. Material either stockpiled or disposed of in a flood plain would require a Kansas State Board of Agriculture permit. Any material dumped in waters of the United States or wetlands is subject to U.S. Corps of Engineers permitting regulations. Any material buried or stockpiled beyond approved construction limits would require additional archaeological investigations unless buried in a previously approved borrow location.

Location Map



Legal Description

The East 248.60 feet of Lot 1, Block A, L.R. Jones Third Addition, Sedgwick County, Kansas.

Benchmarks

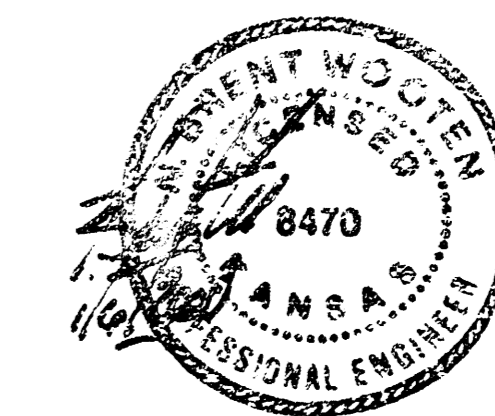
City of Wichita Disc 64' East and 99' South of SE Corner 21st Street and Maize Road.
Elevation: 164.30 City Datum

APPROVED AS NOTED
BY CITY ENGINEER OF WICHITA

Storm Sewers VRH 1/7/2000

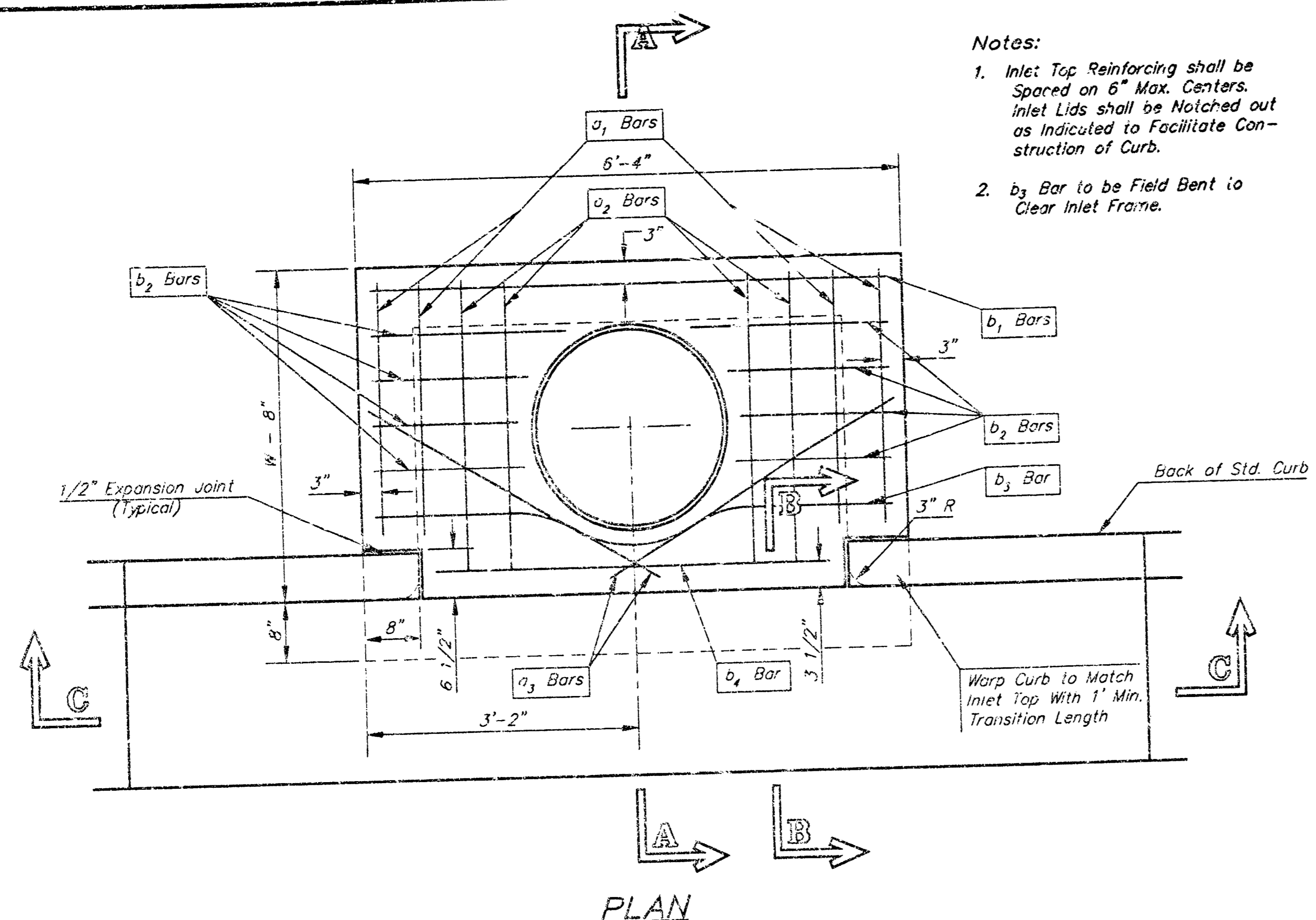
NOTE TO CONTRACTORS

Installation, inspection and testing for the waterline is to be provided by a Licensed Consulting Engineering Firm under contract with the Owner/Developer. Said inspection to be in accordance with the City of Wichita standard construction engineering practices and certified by a Licensed Professional Engineer. No work shall be performed in dedicated easements or public right-of-way by the Contractor without such inspection nor shall any work be commenced without written authorization by the City Engineer. All construction and materials shall comply with the City of Wichita Specifications and Standards (on file and available in the City Engineer's Office).

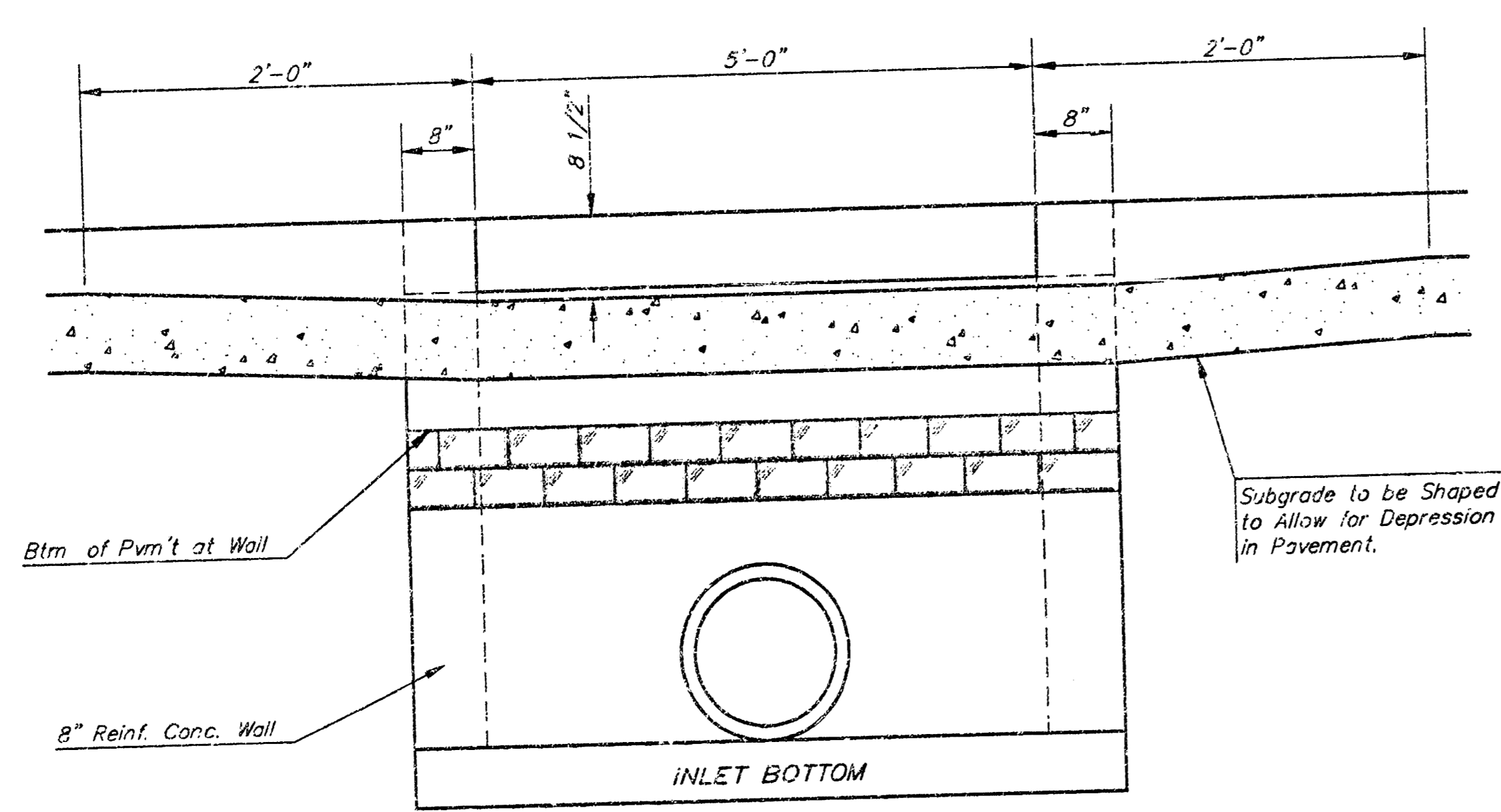


As Built 7/00 KK

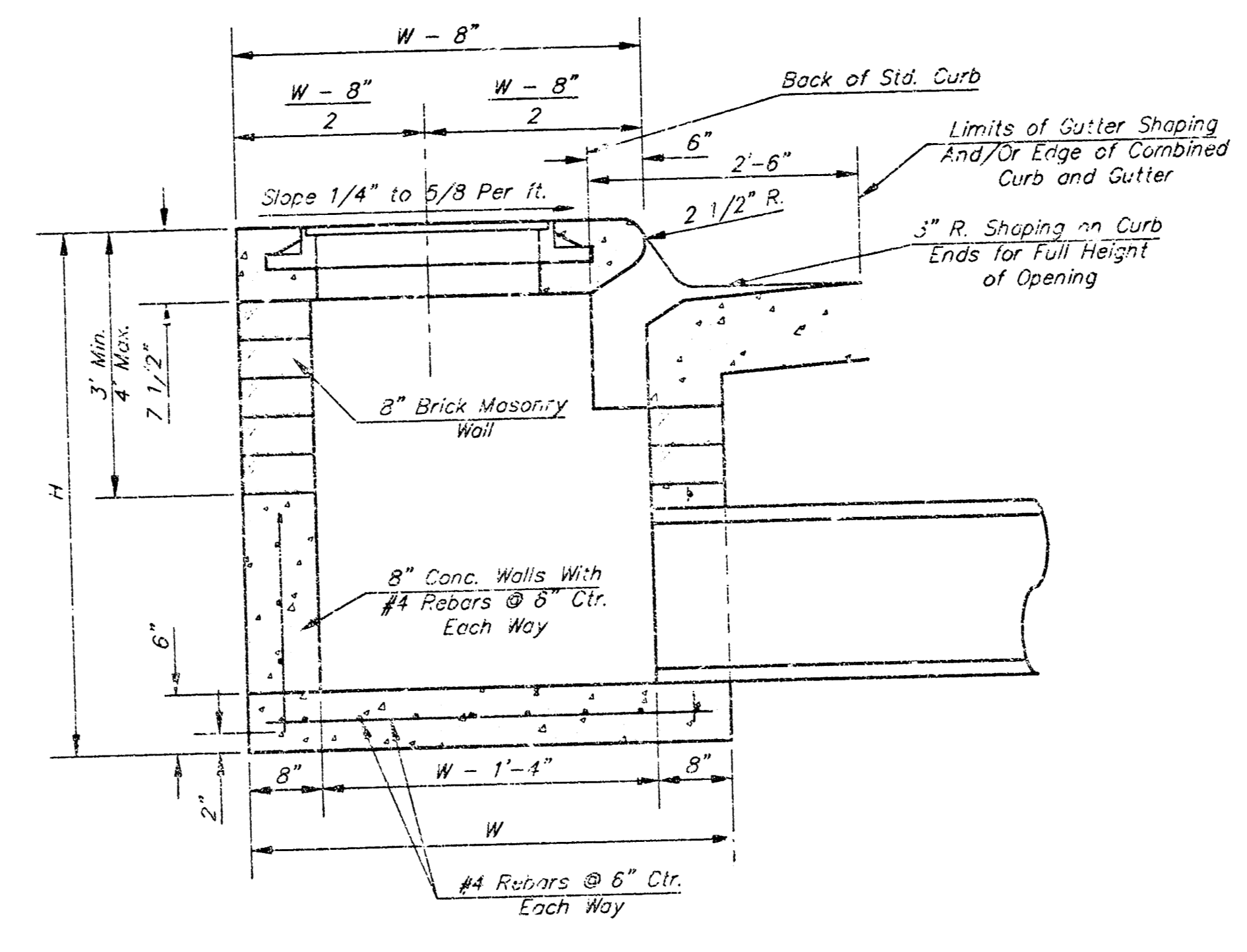
BAUGHMAN COMPANY P.A.
ENGINEERING, SURVEYING, & PLANNING
316-262-7271 • 316-262-7272 • WICHITA, KANSAS 67201



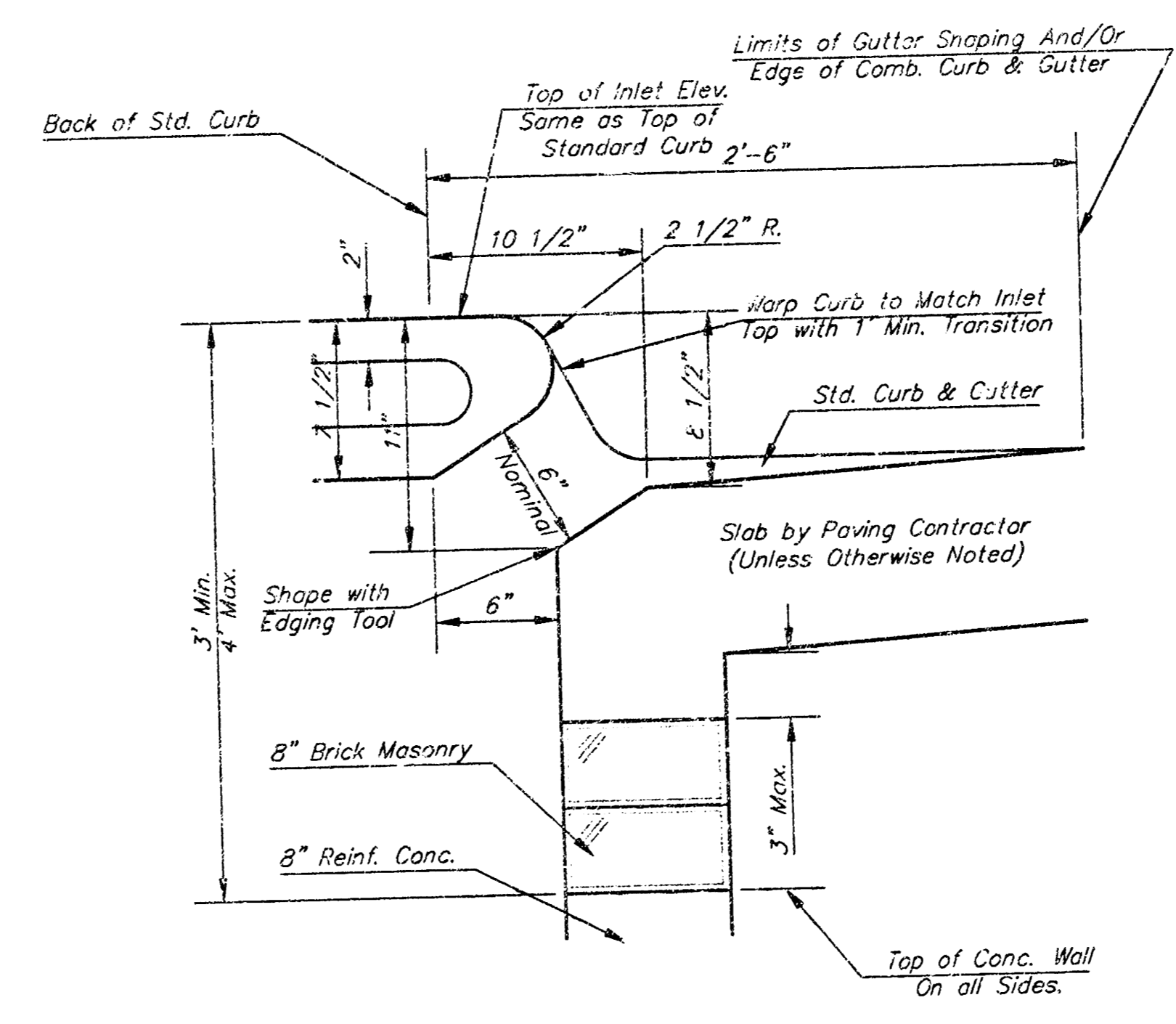
Notes:
 1. Inlet Top Reinforcing shall be Spaced on 8" Max. Centers. Inlet Lids shall be Notched out as Indicated to Facilitate Construction of Curb.
 2. by Bar to be Field Bent to Clear Inlet Frame.



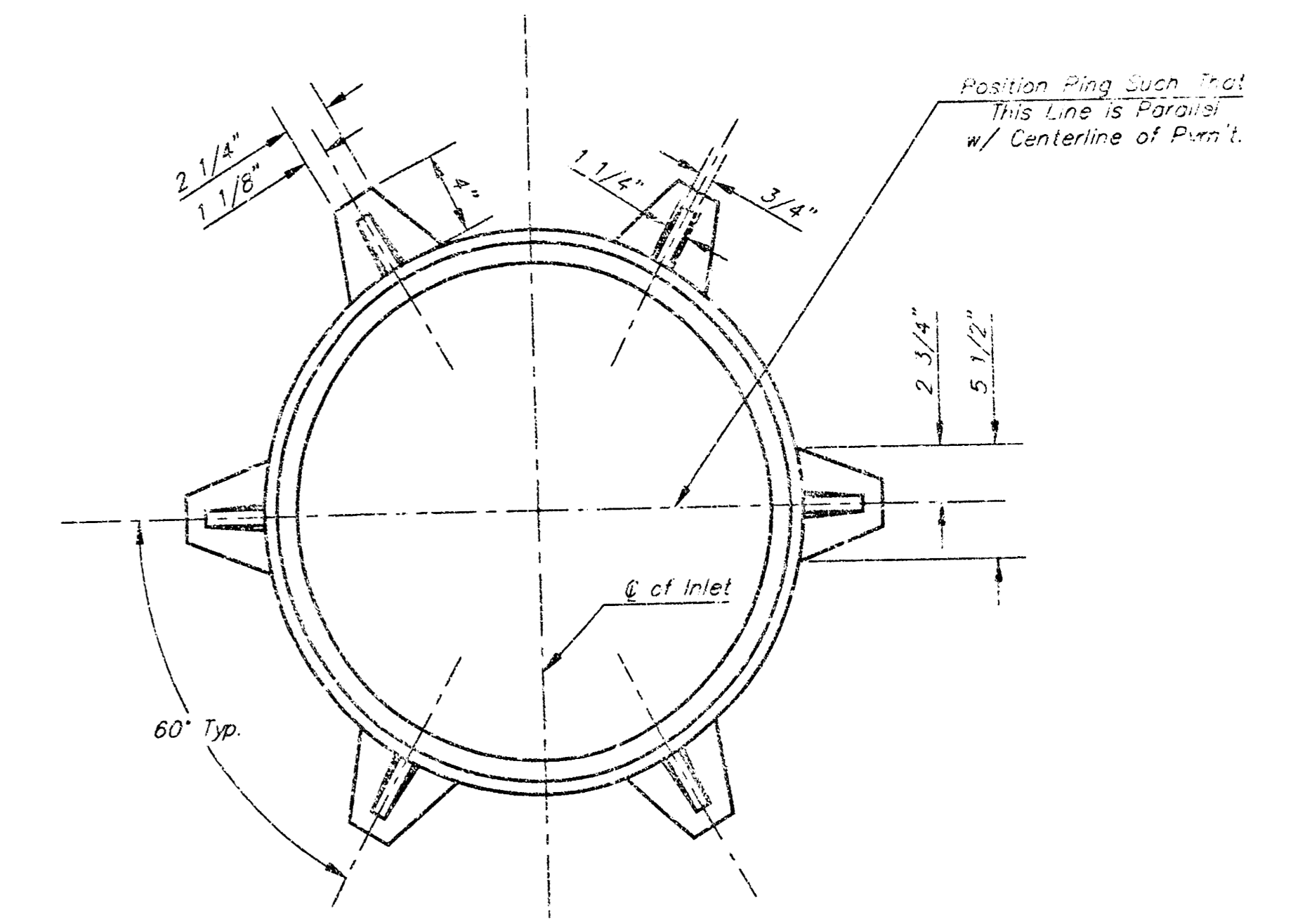
SECTION C-C



SECTION A-A

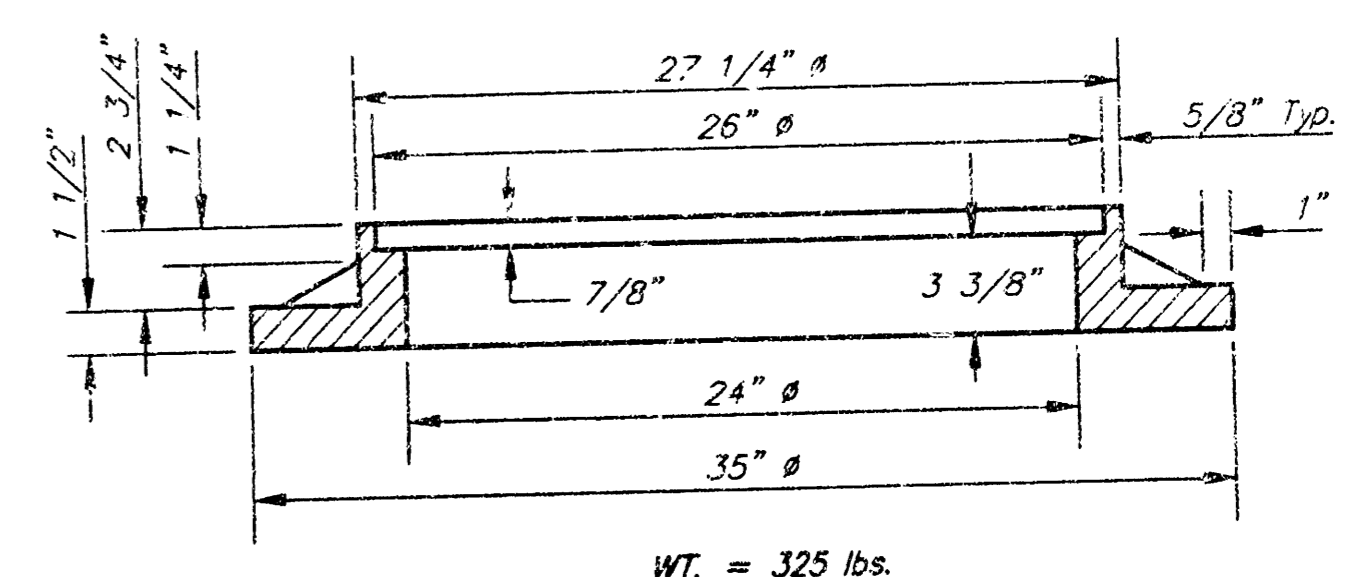


SECTION B-B



MANHOLE RING AND COVER

*See City of Wichita Standard Manhole Ring and Cover Detail Sheet for Cover Details to Be Used With Inlet Frame.



BENDING DIAGRAM

STEEL SCHEDULE

| BAR | a ₁ | | | | a ₂ | | | | b ₁ | b ₂ | b ₃ | b ₄ | Wt. Lbs. |
|--------|----------------|--------|--------|-------|----------------|----|----|-------|----------------|----------------|----------------|----------------|----------|
| | #4 | #4 | #4 | #4 | #4 | #4 | #4 | #4 | | | | | |
| NUMBER | 4 | 4 | 2 | 1 | 5 | 7 | 9 | 6 | 1 | 1 | | | |
| SIZE | #4 | #4 | #4 | #4 | #4 | #4 | #4 | #4 | #4 | #6 | | | |
| LENGTH | W=4'-4" | 5'-7" | 6'-7" | 4'-0" | 6'-1" | - | - | 1'-9" | 6'-2" | 4'-8" | 60± | | |
| | W=5'-4" | 7'-7" | 8'-7" | 5'-0" | 6'-1" | - | - | 1'-9" | 6'-2" | 4'-8" | 81± | | |
| | W=6'-4" | 9'-7" | 10'-7" | 6'-0" | 6'-1" | - | - | 1'-9" | 6'-2" | 4'-8" | 101± | | |
| | W=7'-4" | 11'-7" | 12'-7" | 7'-0" | 6'-1" | - | - | 1'-9" | 6'-2" | 4'-8" | 121± | | |
| | W=8'-4" | 13'-7" | 14'-7" | 8'-0" | 6'-1" | - | - | 1'-9" | 6'-2" | 4'-8" | 141± | | |

Note: a₃ Bars to be Placed Approx. 2" Below Top of Inlet Cover.

STANDARD CURB INLET PRECAST TOPS

| W | PRE-CAST TOP SIZE | PIPE SIZE | CU. YD. CONC. |
|-------|--------------------|---------------|---------------|
| 4'-4" | 3'-8" 6'-4" 7 1/2" | 21" & SMALLER | 0.38± |
| 5'-4" | 4'-8" 6'-4" 7 1/2" | 24" & 30" | 0.51± |
| 6'-4" | 5'-8" 6'-4" 7 1/2" | 36" & 42" | 0.64± |
| 7'-4" | 6'-8" 6'-4" 7 1/2" | 48" & 54" | 0.77± |
| 8'-4" | 7'-8" 6'-4" 7 1/2" | 60" & 66" | 0.90± |

GENERAL NOTES

- Concrete tops to be installed on thin mortar cushion to insure full support along brick walls. Concrete tops may be cast in place or precast. Concrete used for inlet construction shall be concrete pavement mix.
- Contractor shall have the option of constructing 8" brick masonry walls between the concrete inlet base and top on this inlet when W=5'-4" and H=7'-0" or less.
- Inlet invert shall be shaped with 8 sack sand mix concrete to create flow channels and to increase hydraulic efficiency such that the inlet will be self cleaning between all inlet and/or outlet pipes.
- The ends of all pipes installed in inlets shall be cut off flush with the inside face of the inlet wall.

Revised - Dec. 21, 1994

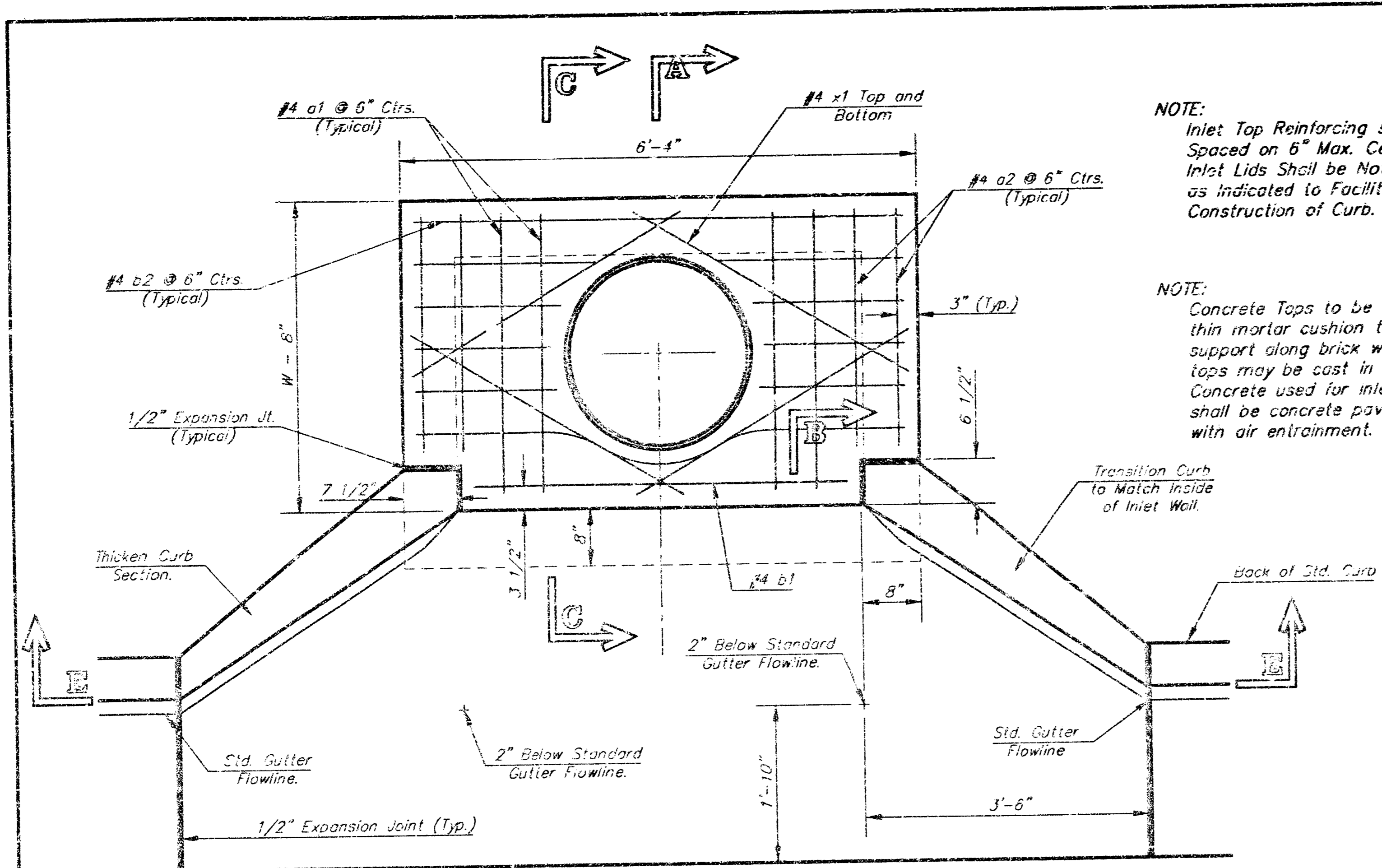
CITY OF WICHITA, KANSAS
TYPE 1 CURB INLET
 INLET OPENING = 6"X5'-0"

BAUGHMAN COMPANY P.A.
 ENGINEERING, SURVEYING, & PLANNING
 318-202-7221 • 315 E. JEFF • WICHITA, KANSAS 67211

| | | | | |
|------------------|----------------|----------|------------------|---------------|
| DESIGN C.O.W. | DRAWN STAFF | APPROVED | DATE 12/18/98 | SCALE NONE |
|------------------|----------------|----------|------------------|---------------|

PROJECT NUMBER
931 PFS (807861)

SHEET
3
OF
5

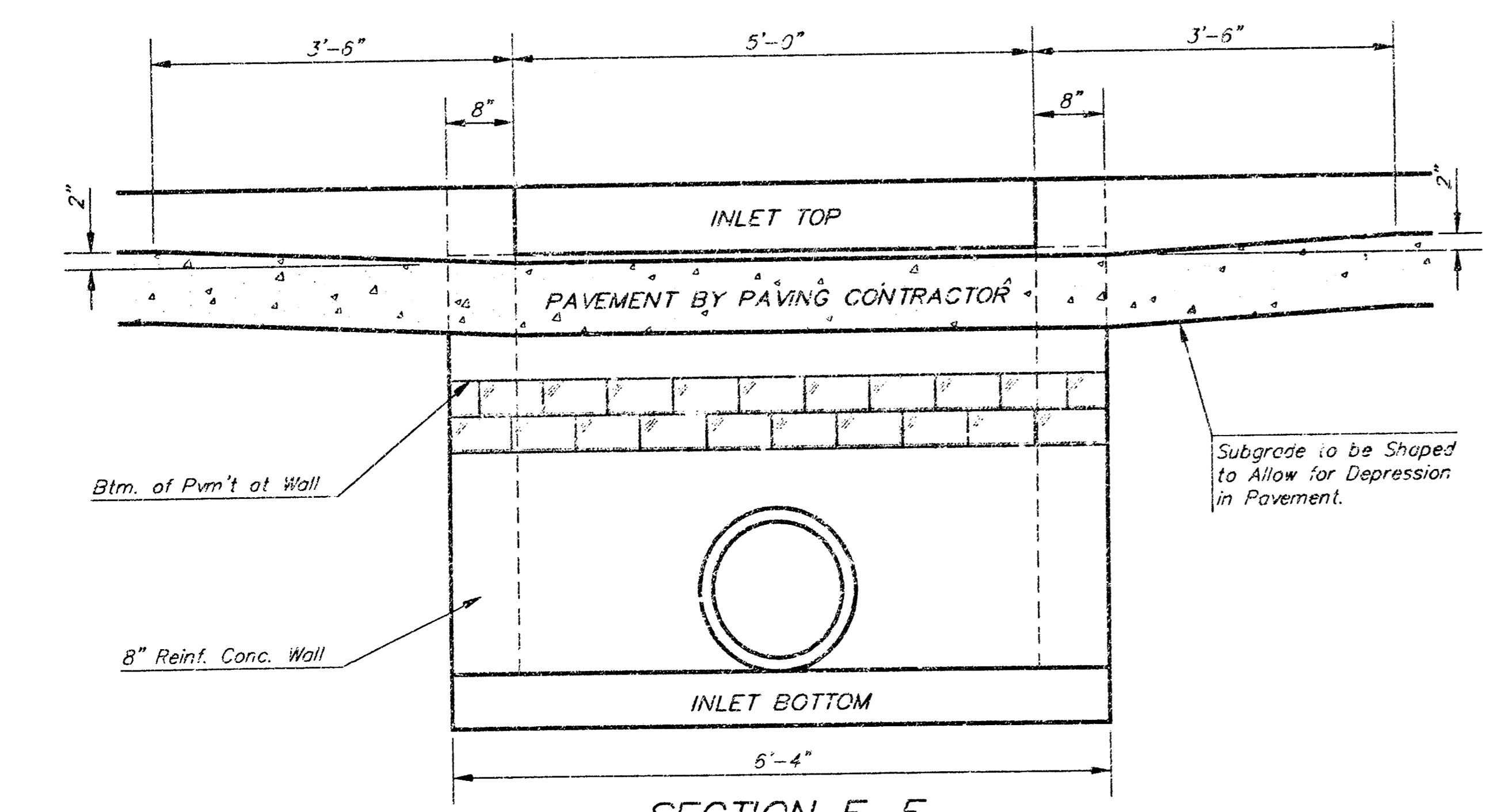


NOTE: Inlet Top Reinforcing shall be Spaced on 6" Max. Centers. Inlet Lids Shall be Notched Out as Indicated to Facilitate Construction of Curb.

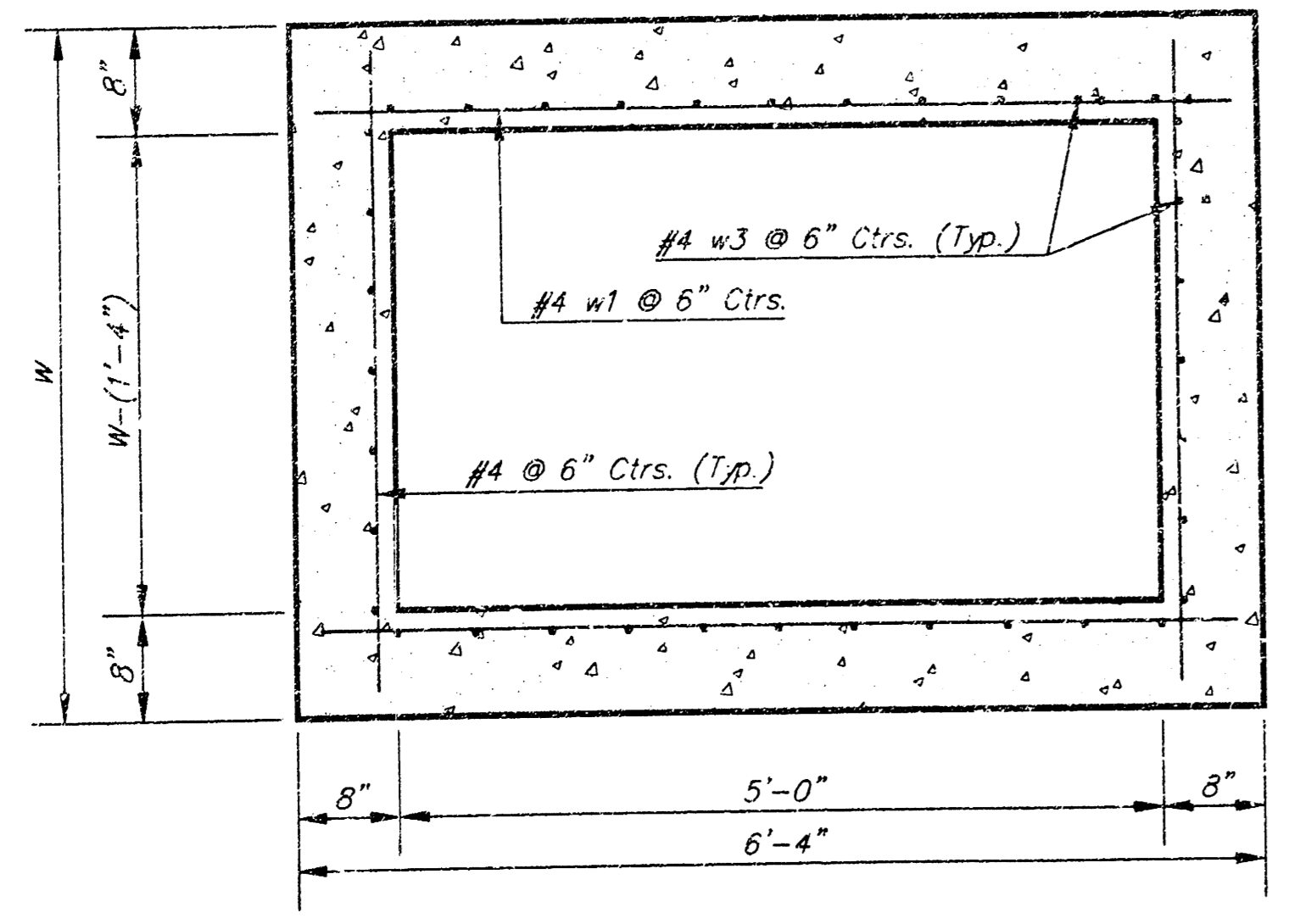
NOTE: Concrete Tops to be installed on thin mortar cushion to insure full support along brick walls. Concrete tops may be cast in place or precast. Concrete used for inlet construction shall be concrete pavement mix with air entrainment.

NOTE: Expansion Joint Only in Curb Area With Concrete Pavement.

PLAN



SECTION E-E



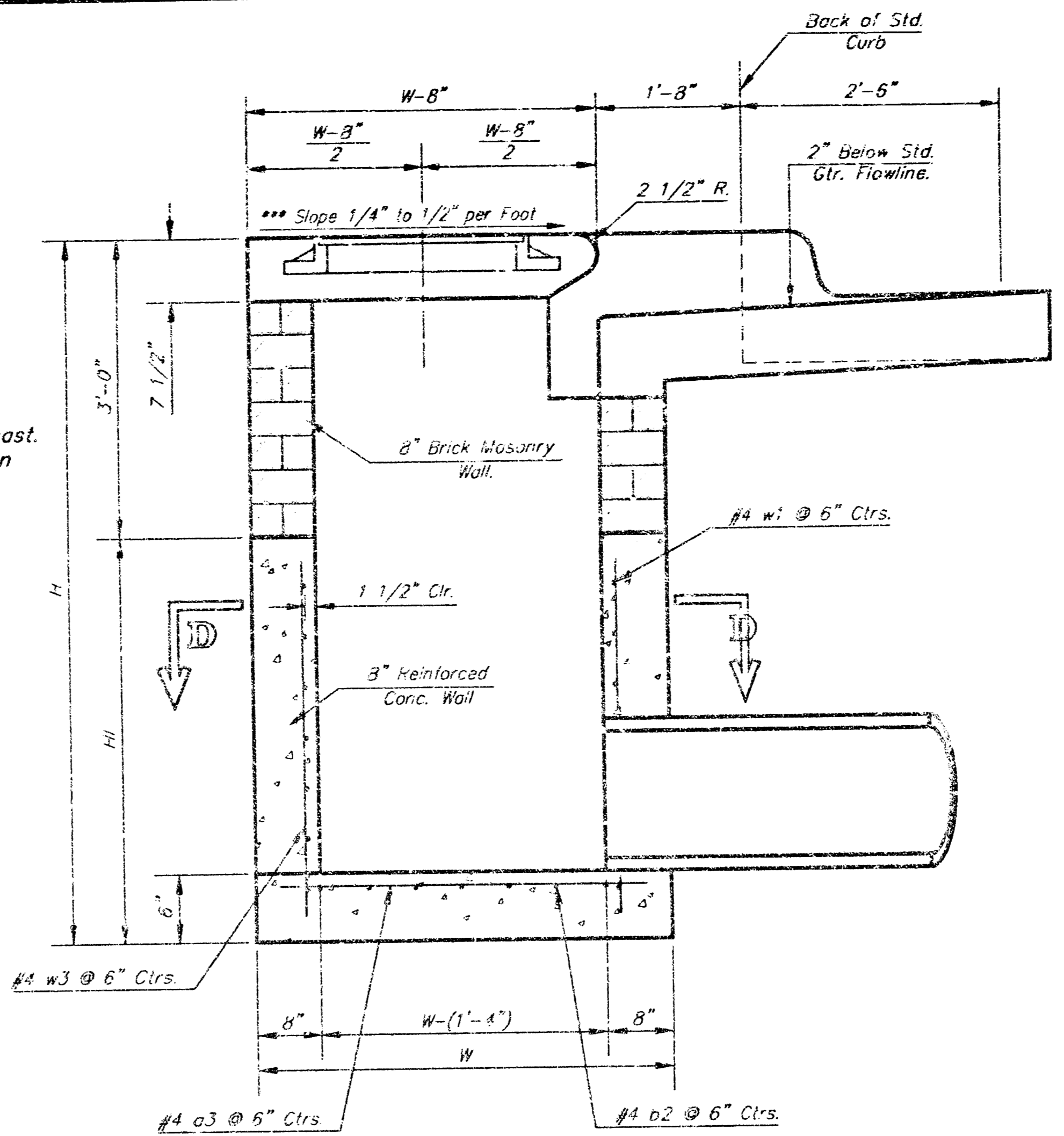
SECTION D-D

NOTE: Contractor shall have the option of constructing 8" brick masonry walls between the concrete inlet base and top on this inlet when W=6'-4" and H=7'-0" or less.

Additional curb and gutter construction necessary to connect set-back inlet to pavement will be paid for at the unit price bid for each inlet hookup.

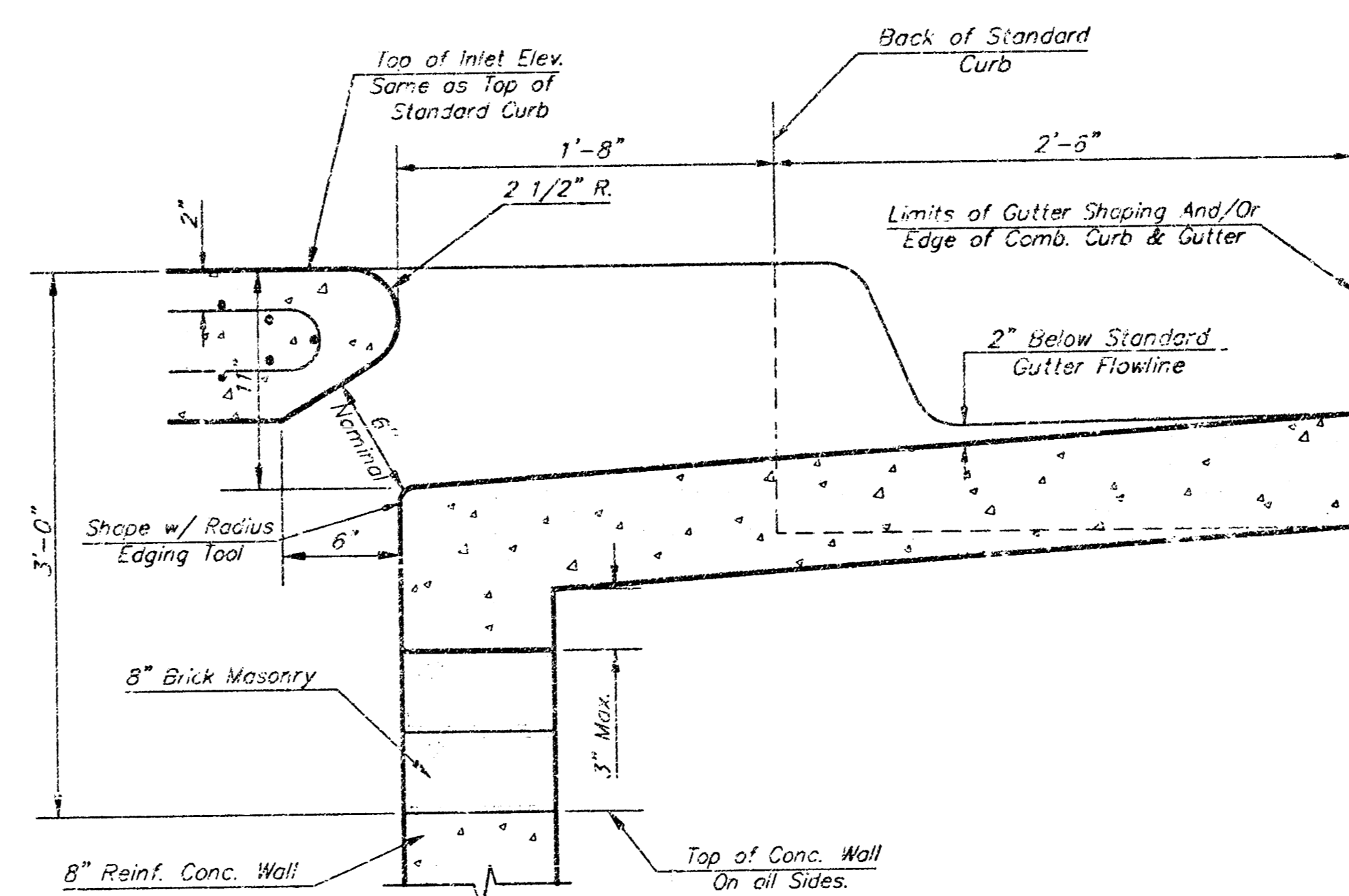
Inlet invert shall be shaped with 8 sack sand mix concrete to create flow channels and to increase hydraulic efficiency such that the inlet will be self-cleaning between all inlet and/or outlet pipes.

The ends of all pipes installed in inlets shall be cut off flush with the inside face of the inlet wall.

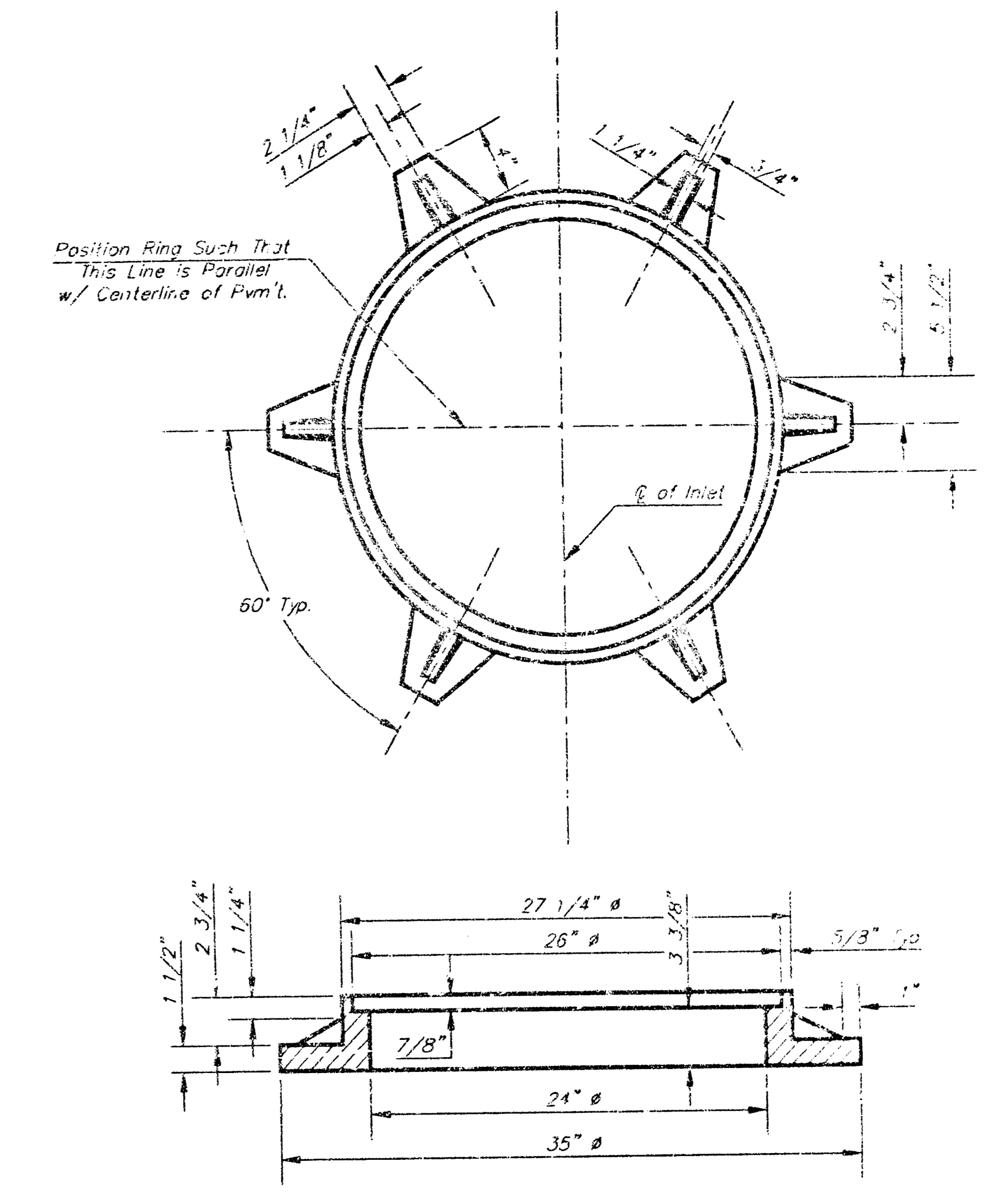


SECTION A-A

NOTE: Slope of inlet tops to Match Sidewalk or Parking Slopes within Limits Indicated.

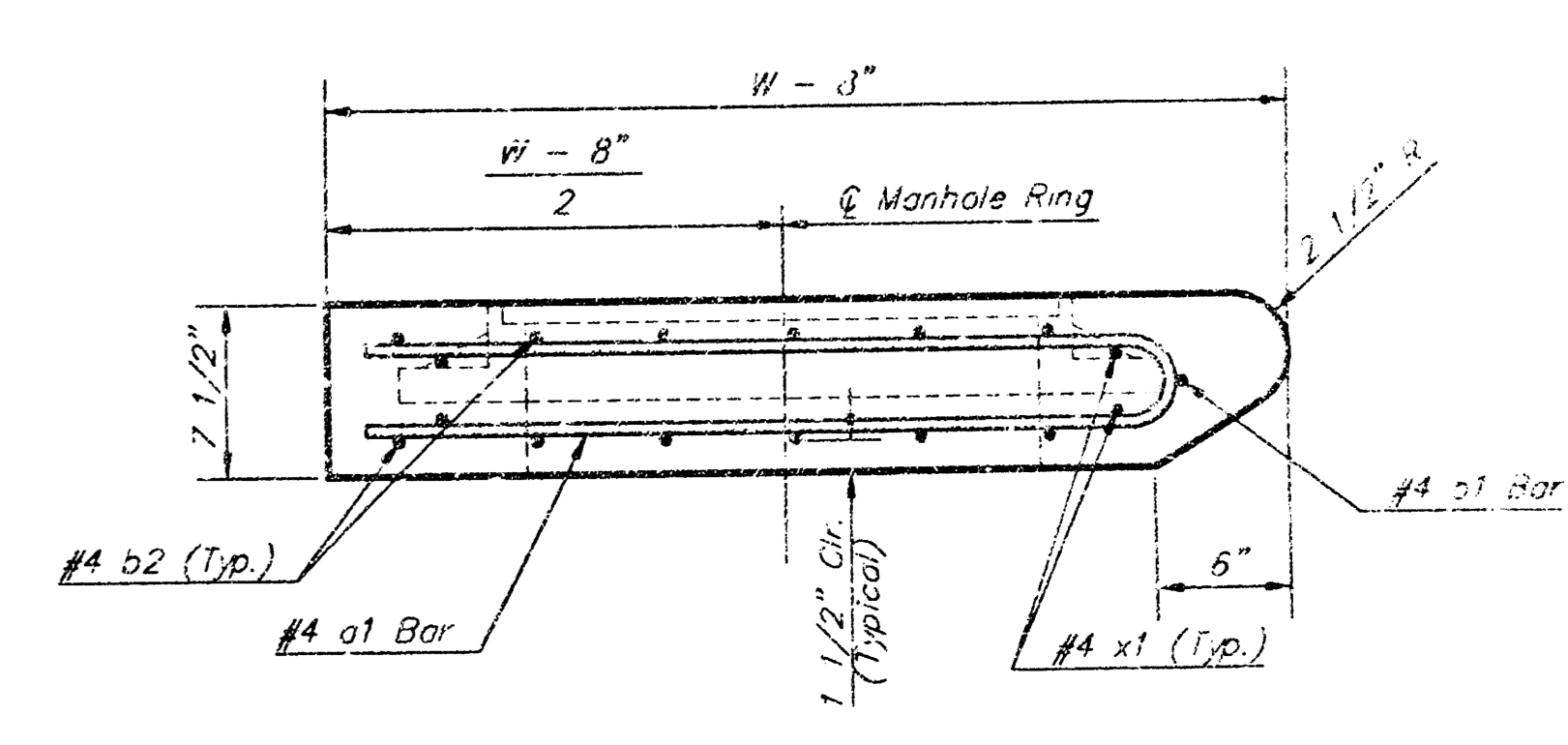


SECTION B-B



MANHOLE RING AND COVER

Weight = 180 Lbs.
*See City of Wichita Standard Manhole Ring and Cover Detail Sheet for Cover Details to Be Used with Inlet Frames.

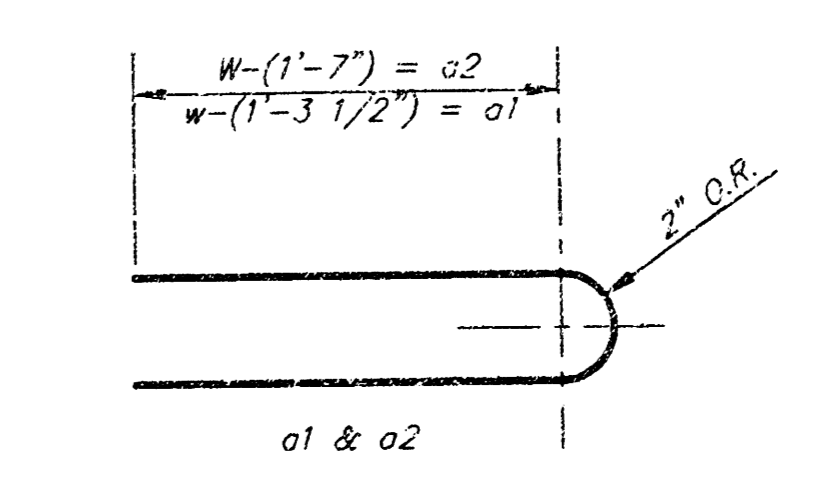


SECTION A-A

| PRECAST SLAB AND FLOOR REINFORCING | | | | | | | | | | | |
|------------------------------------|------|-----------|--------|-----------|--------|-----------|--------|-----------|--------|-----------|--------|
| | | W = 4'-4" | | W = 5'-4" | | W = 6'-4" | | W = 7'-4" | | W = 8'-4" | |
| MARK | SIZE | NO. | LENGTH | NO. | LENGTH | NO. | LENGTH | NO. | LENGTH | NO. | LENGTH |
| a1 | #4 | 6 | 6'-7" | 6 | 8'-7" | 6 | 10'-7" | 6 | 12'-7" | 6 | 14'-7" |
| a2 | #4 | 4 | 6'-0" | 4 | 8'-0" | 4 | 10'-0" | 4 | 12'-0" | 4 | 14'-0" |
| a3 | #4 | 13 | 4'-1" | 13 | 5'-1" | 13 | 6'-1" | 13 | 7'-1" | 13 | 8'-1" |
| b1 | #4 | 1 | 4'-9" | 1 | 4'-9" | 1 | 4'-9" | 1 | 4'-9" | 1 | 4'-9" |
| a b2 | #4 | 23 | 6'-1" | 29 | 6'-1" | 35 | 6'-1" | 41 | 6'-1" | 47 | 6'-1" |
| x1 | #4 | 8 | 3'-10" | 8 | 4'-2" | 8 | 4'-2" | 8 | 4'-10" | 8 | 5'-2" |

| WALL REINFORCING | | | | | | | | | | | |
|------------------|------|-----------|--------|-----------|--------|-----------|--------|-----------|--------|-----------|--------|
| | | W = 4'-4" | | W = 5'-4" | | W = 6'-4" | | W = 7'-4" | | W = 8'-4" | |
| MARK | SIZE | NO. | LENGTH | NO. | LENGTH | NO. | LENGTH | NO. | LENGTH | NO. | LENGTH |
| w1 | #4 | ① | 6'-1" | ① | 6'-1" | ① | 6'-1" | ① | 6'-1" | ① | 6'-1" |
| w2 | #4 | ① | 4'-1" | ① | 5'-1" | ① | 6'-1" | ① | 7'-1" | ① | 8'-1" |
| w3 | #4 | 32 | ② | 36 | ② | 40 | ② | 44 | ② | 48 | ② |

* Field Bend or Cut Reinforcing as Required for Clearance.
① 4 (H1 - 12") (H1 - 21") Rounded down to nearest 0.5"
② H1 - 3"



BENDING DIAGRAM

| STANDARD CURB INLET PRECAST TOPS | | | |
|----------------------------------|------------------------|---------------|---------------|
| W | PRE-CAST TOP SIZE | PIPE SIZE | CU. YD. CONC. |
| 6'-4" | 3'-8" x 6'-4" x 7 1/2" | 21" & SMALLER | 0.38t |
| 5'-4" | 4'-8" x 6'-4" x 7 1/2" | 24" & 30" | 0.51t |
| 6'-4" | 5'-8" x 6'-4" x 7 1/2" | 36" & 42" | 0.64t |
| 7'-4" | 6'-8" x 6'-4" x 7 1/2" | 48" & 54" | 0.77t |
| 8'-4" | 7'-8" x 6'-4" x 7 1/2" | 60" & 66" | 0.90t |

Revised - Feb. 16, 1989

CITY OF WICHITA STANDARD TYPE 1A
Curb Inlet Details
INLET OPENING = 6" x 8"-0"

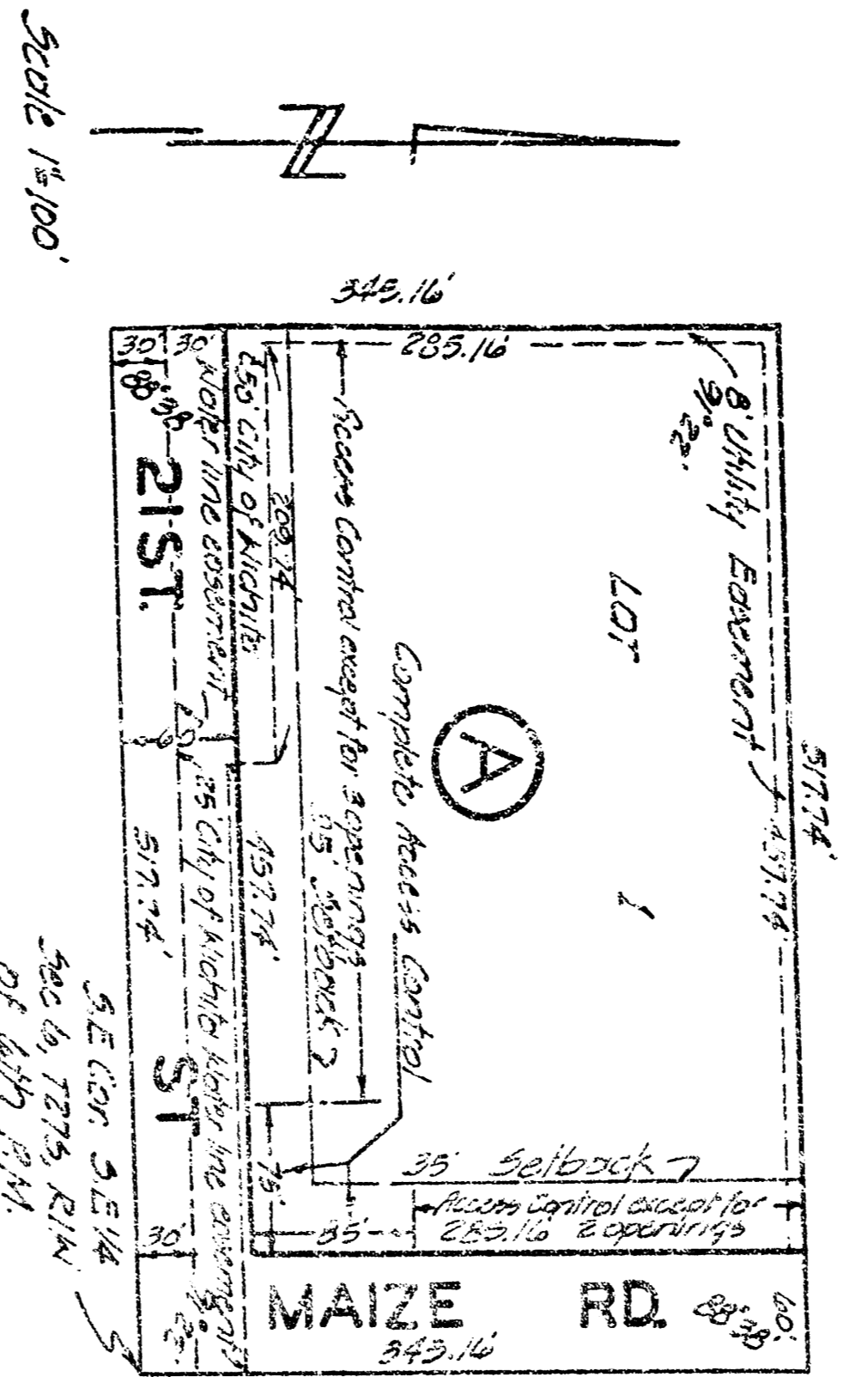
BAUGHMAN COMPANY P.A.
ENGINEERING, SURVEYING, & PLANNING
316-262-7771 • 315 ELLIS • WICHITA, KANSAS 67211

PROJECT NUMBER
961 PPS (607861)

DESIGN: C.O.W. DRAWN: Staff APPROVED: DATE: 11-30-98 SCALE: None

SHEET **4** OF **5**

L. R. JONES THIRD ADDITION
SEDGWICK COUNTY, KANSAS.



This plat of L. R. JONES THIRD ADDITION Sedgwick County, Kansas has been approved by the Wichita-Sedgwick County Metropolitan Area Planning Commission, Wichita, Kansas and is hereby transmitted to the Board of Commissioners of the City of Wichita, Kansas with the recommendation that such plat be approved as proposed. Dated this 20th day of January, 1926. The Wichita-Sedgwick County Metropolitan Area Planning Commission

Approved by the Board of City Commissioners this 22nd day of March, 1926
 E. B. Bledsoe, Secretary
 C. W. Yarnall, Mayor
 Fred L. Edwards, City Clerk

Approved by the Board of County Commissioners this 22nd day of March, 1926
 J. W. ... , Chairman
 ... , Commissioner
 ... , County Clerk

Entered on Transfer record this 21st day of March, 1926
 ... , County Clerk

We The Wichita Republic Building and Loan Association, Wichita, Kansas members on part of the above described property, do hereby consent to the plat of L. R. JONES THIRD ADDITION to Wichita, Sedgwick County, Kansas

Executive Vice President
 ... , Secretary

State of Kansas
 County of Sedgwick } ss.
 Be it remembered that on this 22nd day of March, 1926, before me, a Notary Public in and for said State and County, came Lewis Homer Executive Vice President and S. B. Hollinger, Assistant Secretary of the Wichita Republic Building and Loan Association, Wichita, Kansas, to me personally known to be the same persons who executed the foregoing instrument of writing and duly acknowledged the same as their voluntary act and deed and the return of said and deed of said Association

State of Kansas
 County of Sedgwick } ss.
 I, Don C. MacIntyre, C.E. a Civil Engineer in said State and County do hereby certify that I have surveyed and platted L.R. JONES THIRD ADDITION, Sedgwick County, Kansas, the same being accurately set forth in the accompanying plat and described as: A tract of land in the 5.2 1/4 of section 6, Township 21, South Range 1 West of the 6th P.M., beginning at the 5.2 corner of the 5.2 1/4 of section 6, Township 21, South, Range 1 West of the 6th P.M. thence West along the South line of said section to a distance of 57.74 feet thence North parallel with the East line of section 6, a distance of 244.16 feet thence East a distance of 217.74 feet to a point on the East line of the 5.2 1/4 of said section 6; thence South 244.16 feet to the point of beginning;

Know all men by these presents that we the undersigned property owners of the land on above set forth in the Civil Engineer's Certificate have caused the same to be surveyed and platted into a lot or block, a street and a road the same to be known as L.R. JONES THIRD ADDITION Sedgwick County, Kansas. The street and the road one hereby dedicated to and for the use of the public, easements as indicated for the continuation and maintenance of public utilities, one hereby granted. The water line easement as indicated on the face of the plat is dedicated to the City of Wichita. All other rights of access to or from House 824 and Block 4, one hereby granted to the public provided however that Lot 1, Block 4, shall have access to House 824 of the location and access to 21st Street of those locations as may be established by the appropriate governing body.

My commission expires: 12-14-26
 Notary Public

July 4-267
 201 652
 A. J. Smith, C. W. Jones