

STORM WATER SEWER TO SERVE

Conoco Addition

LOT 1

Private Project Number

966 PPS (607861)

CITY OF WICHITA, KANSAS  
 Michael E. Lindebak, P.E. City Engineer

January 2000

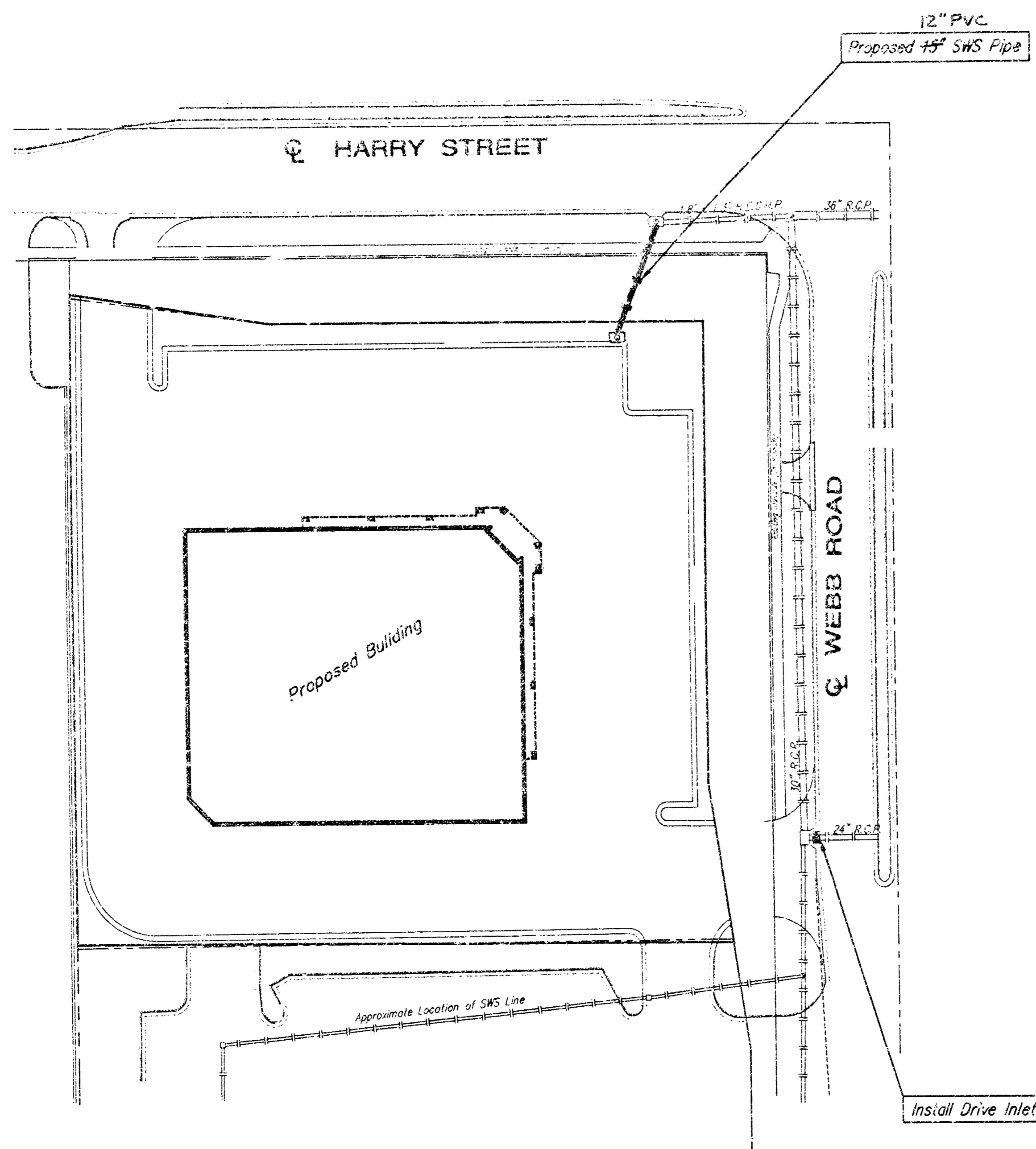
**BENCHMARK:**

Rebar Located at the NE Corner of Lot 1, Conoco Addition,  
 Wichita, Sedgewick County, Kansas.  
 Elevation: 171.69 City Datum

**Index**

Title Sheet	1
Plan/Profile Sheet	2
Detail Sheet	3-5
Copy Of Plot	6

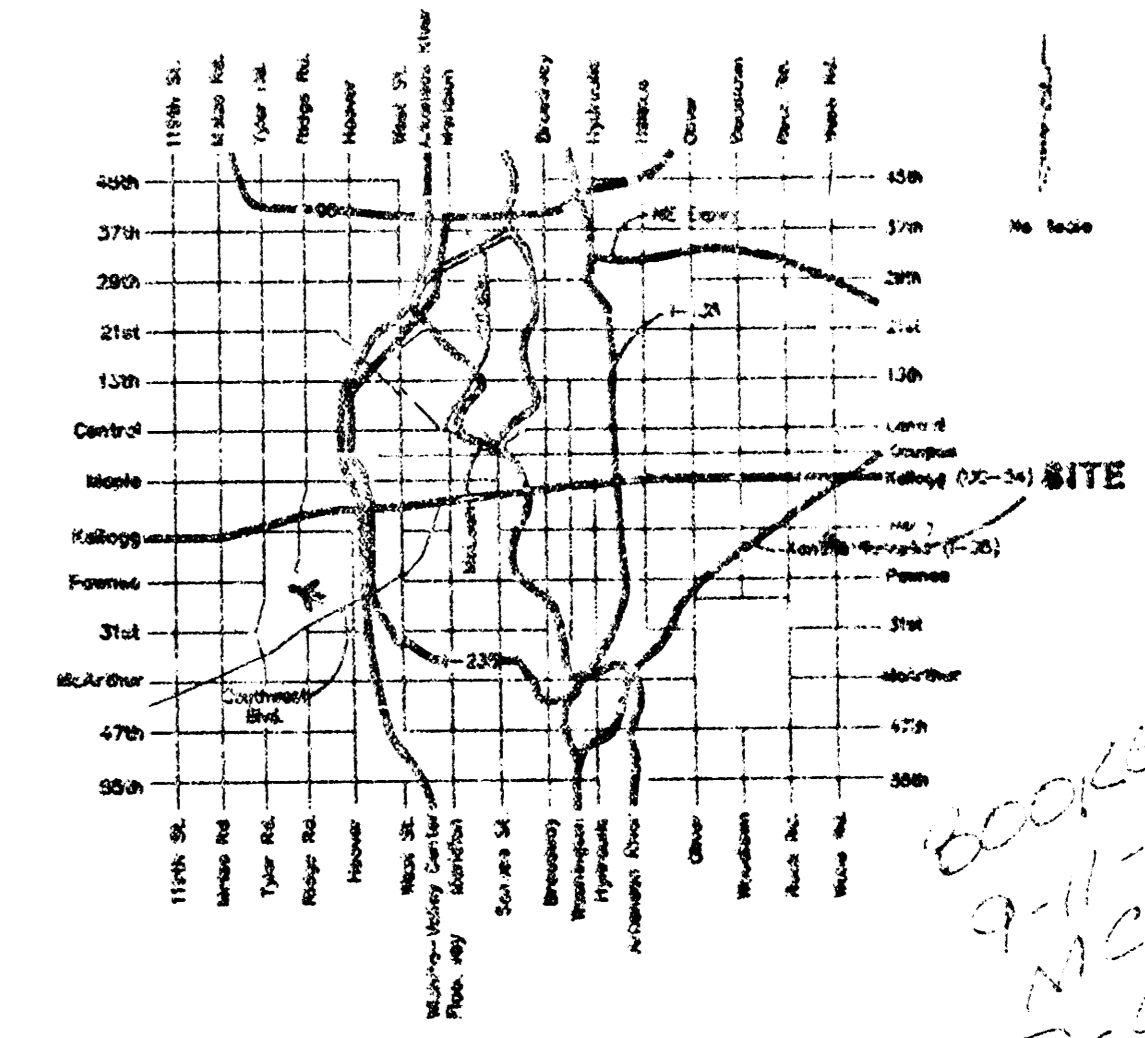
SCALE:  
 1" = 40'



**General Notes**

- Contractor will be required to provide notice to utility companies a minimum of forty-eight (48) hours prior to any excavation, as follows:  
 Kansas One-Call 687-2470  
 The Contractor must notify the following in case of an emergency:  
 MultiMedia Cablevision 262-4270  
 Kansas Gas Service Company 383-8800  
 Kansas Gas & Electric Company 383-8650  
 Peoples Gas Company 942-7600  
 Southwestern Bell Telephone Company 1-571-2611  
 City of Wichita Water Department 268-4908  
 City of Wichita Sewer Department 268-4071
- Utility service lines, poles, valve boxes, meters, et cetera are to be adjusted as necessary by others prior to construction unless the plans specifically call for their adjustment by the Contractor or unless the plans specifically identify a utility to be adjusted by its owner during construction. Existing utilities and their location, as shown on the plans represent the best information obtainable for design and shall be field verified. The contractor will be required to work around existing utilities within the right-of-way which do not conflict with proposed construction.
- Trees and shrubs in public right-of-way which are in direct conflict with proposed new construction shall be removed by the Contractor with the Engineer's approval. Trees and shrubs which are not in direct conflict with proposed new construction shall be saved and protected from damage.
- Contractor shall not start work on the project until the project inspector is assigned to the project and is present on the site. Any work done without inspection will be required to be uncovered for inspection.
- Rubble from the removal of miscellaneous structures and excess excavation which is to be wasted shall be disposed of on sites to be provided by the Contractor. These sites shall be approved by the Engineer as to suitability, appearance and site location. Locations that, in the opinion of the Engineer, will leave an unsightly appearance will not be approved. All disposal sites must be approved by the Kansas Department of Health and Environment. Material either stockpiled or disposed of in a flood plain would require a Kansas State Board of Agriculture permit. Any material dumped in waters of the United States or wetlands is subject to U.S. Corps. of Engineers permitting regulations. Any material buried or stockpiled beyond approved construction limits would require additional archaeological investigations unless buried in a previously approved borrow location.
- Cuts made to paved surfaces on public property will be repaired by the City's contractor and charged against the owner/applicant. Unit repair prices are available from the City at 268-4418. A surcharge may be applicable; call 268-4418 for details. Repair costs to be paid prior to release of sewer service if sewer service is affected. Contractor shall obtain permit prior to construction.

**Location Map**



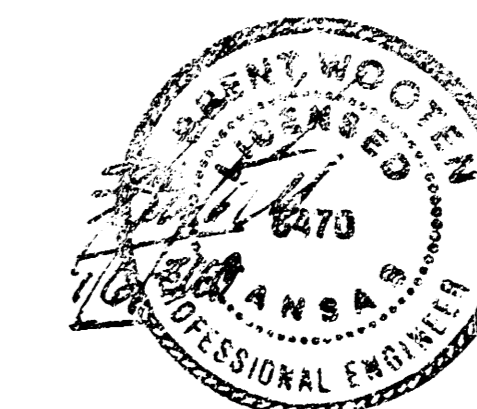
As Built 7/00

APPROVED AS NOTED  
 BY CITY ENGINEER OF WICHITA

Storm Sewers VRH 1/7/2000

**NOTE TO CONTRACTORS**

Installation, inspection and testing for the waterline is to be provided by a Licensed Consulting Engineering Firm under contract with the Owner/Developer. Said inspection to be in accordance with the City of Wichita standard construction engineering practices and certified by a Licensed Professional Engineer. No work shall be performed in dedicated easements or public right-of-way by the Contractor without such inspection nor shall any work be commenced without written authorization by the City Engineer. All construction and materials shall comply with the City of Wichita Specifications and Standards (on file and available in the City Engineer's office).



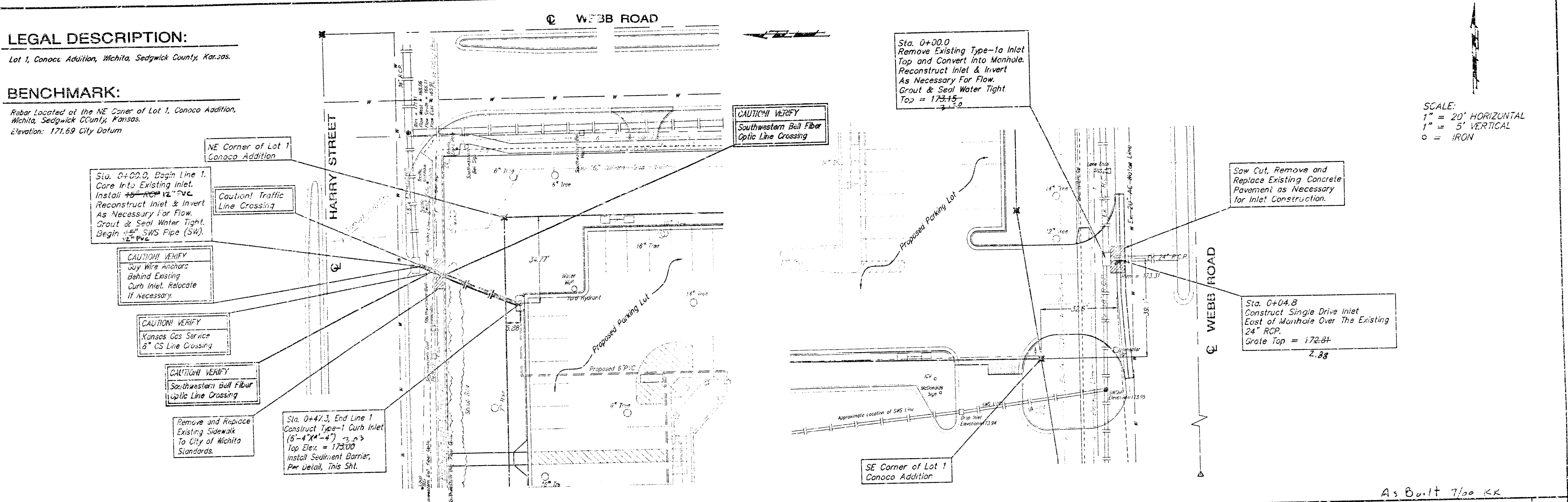
**BAUGHMAN COMPANY P.A.**  
 ENGINEERING, SURVEYING, & PLANNING  
 319-222-1271 • 319-222-1272 • WICHITA, KANSAS 67201

**LEGAL DESCRIPTION:**

Lot 1, Conoco Addition, Wichita, Sedgewick County, Kansas.

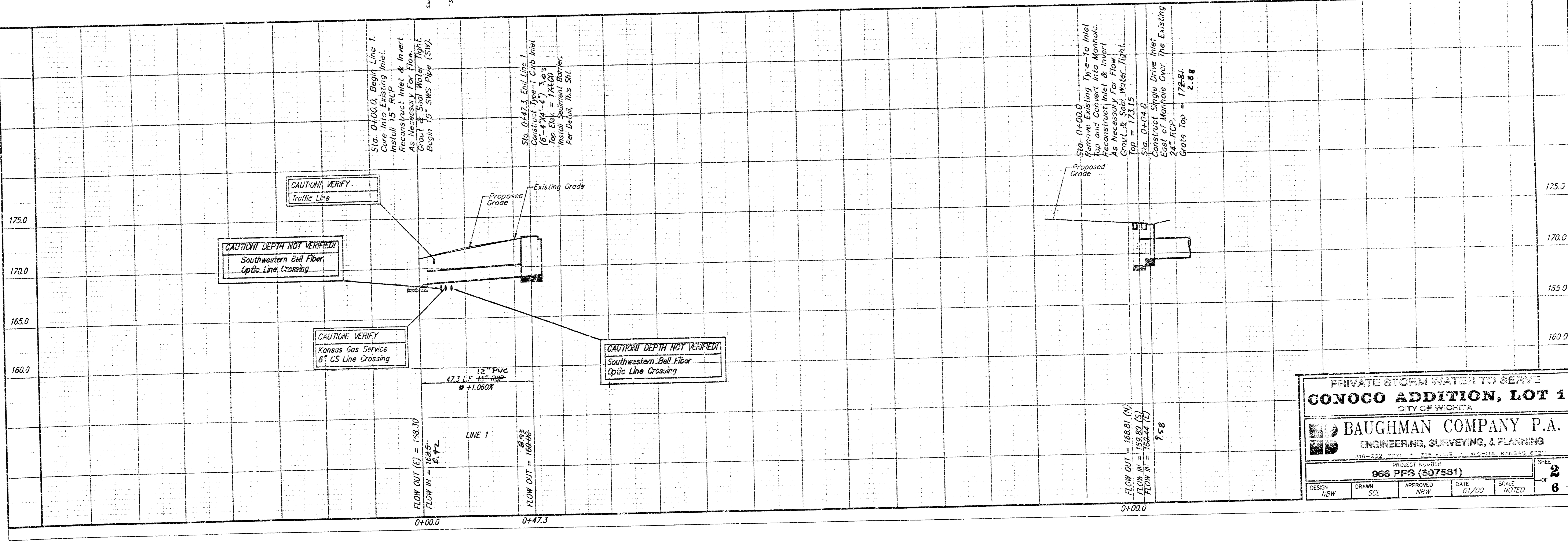
**BENCHMARK:**

Rebar Located at the NE Corner of Lot 1, Conoco Addition, Wichita, Sedgewick County, Kansas. Elevation: 171.69 City Datum



SCALE:  
1" = 20' HORIZONTAL  
1" = 5' VERTICAL  
○ = IRON

As Built 7/00 KK



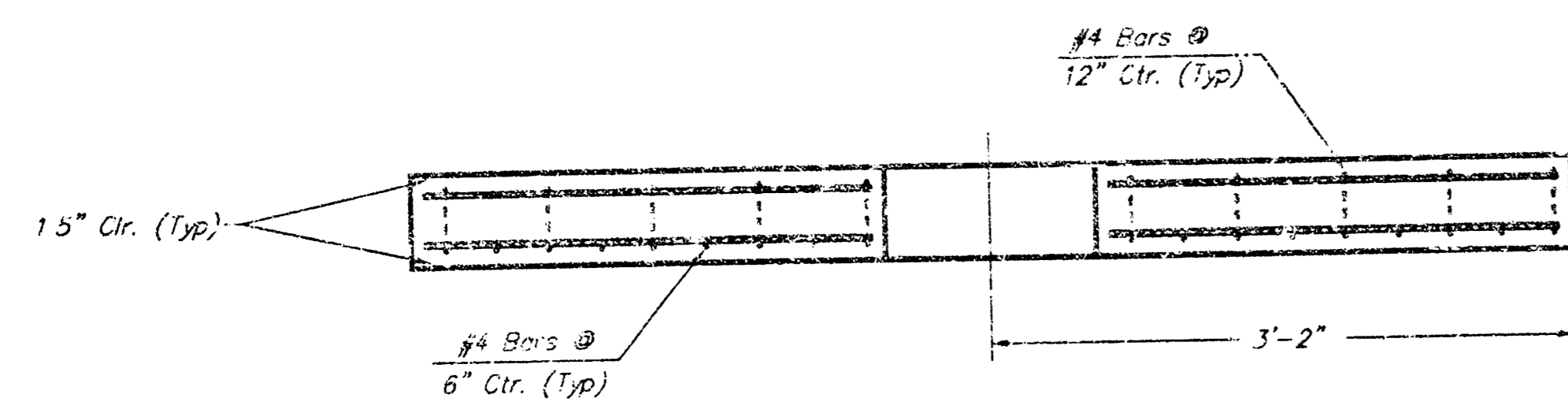
PRIVATE STORM WATER TO SERVE  
**CONOCO ADDITION, LOT 1**  
CITY OF WICHITA

**BAUGHMAN COMPANY P.A.**  
ENGINEERING, SURVEYING, & PLANNING  
316-252-7271 • 116 ELLIS • WICHITA, KANSAS 67211

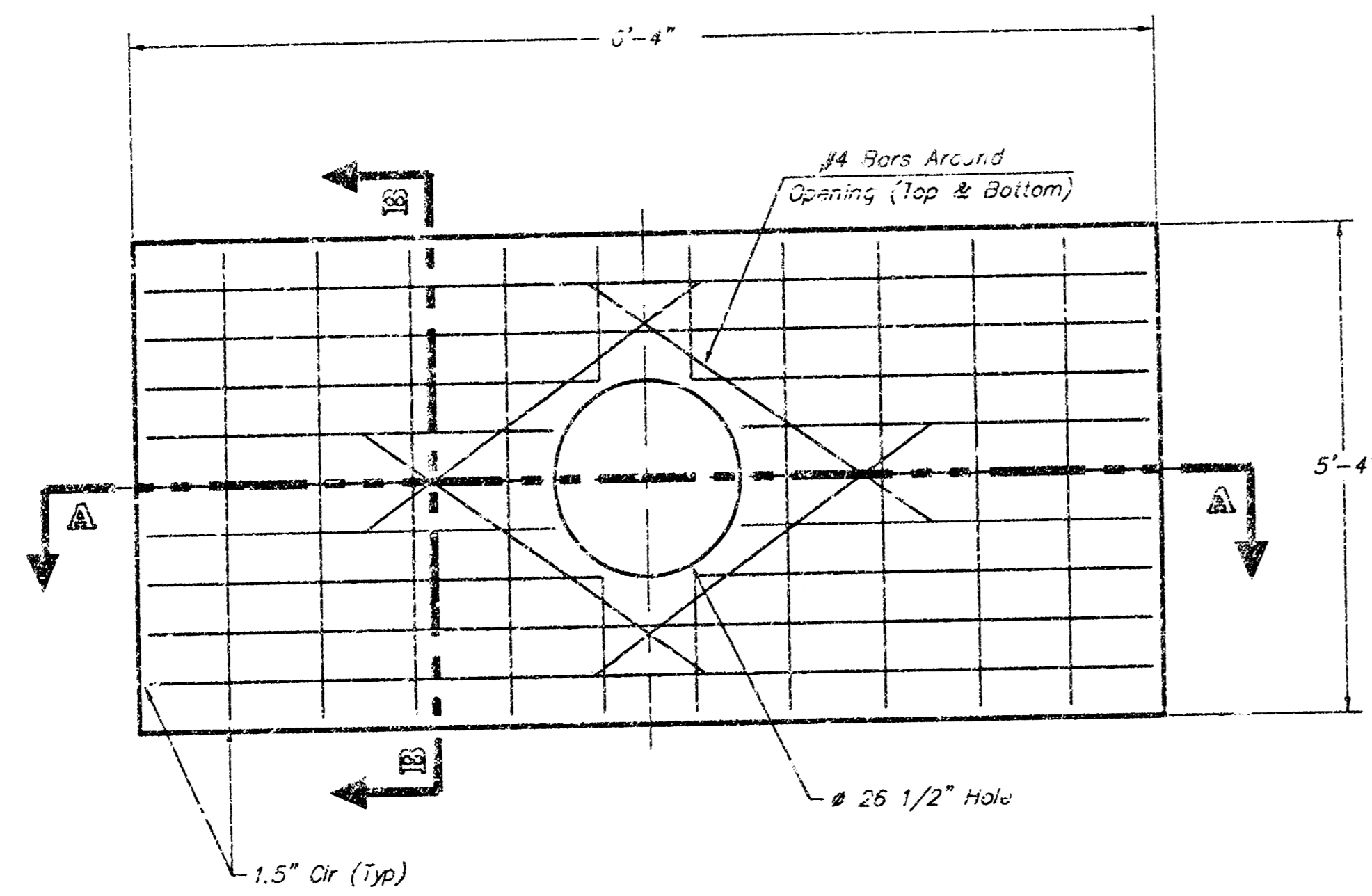
PROJECT NUMBER  
**988 PPS (607881)**

DESIGN	DRAWN	APPROVED	DATE	SCALE
NEW	SC	NBY	01/00	NOTED

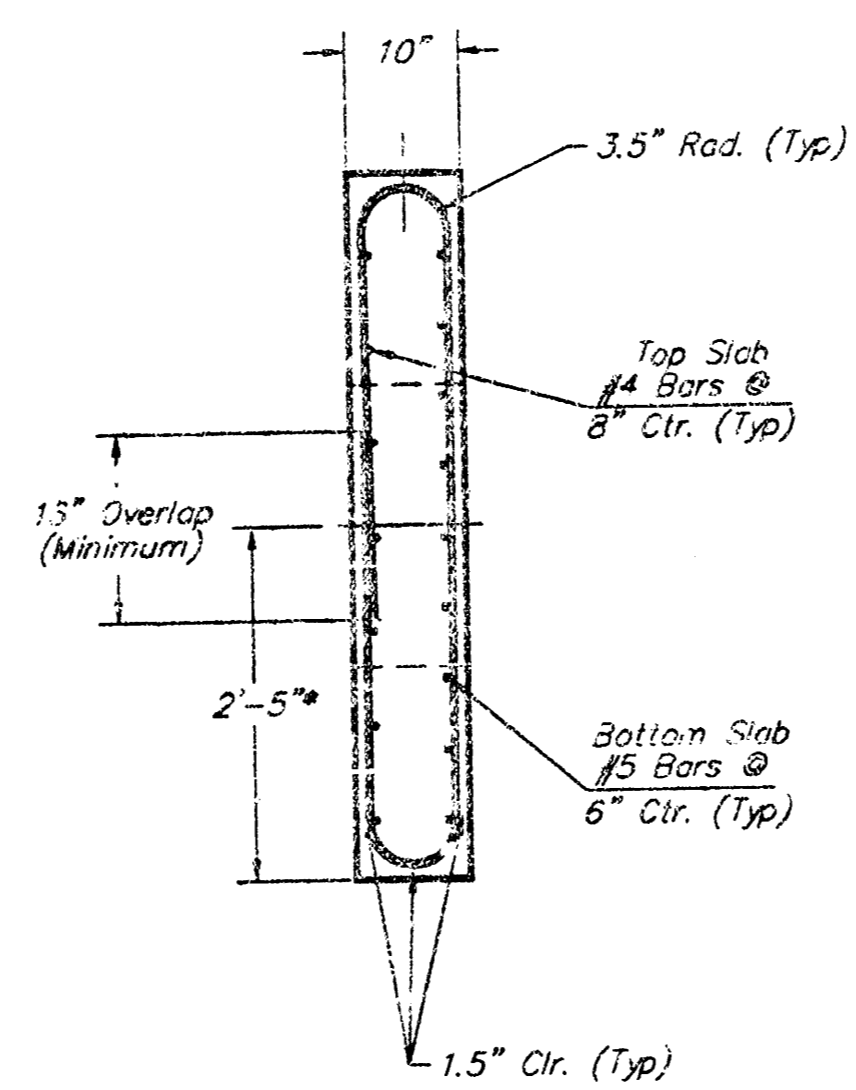
SHEET  
**2**  
OF  
**6**



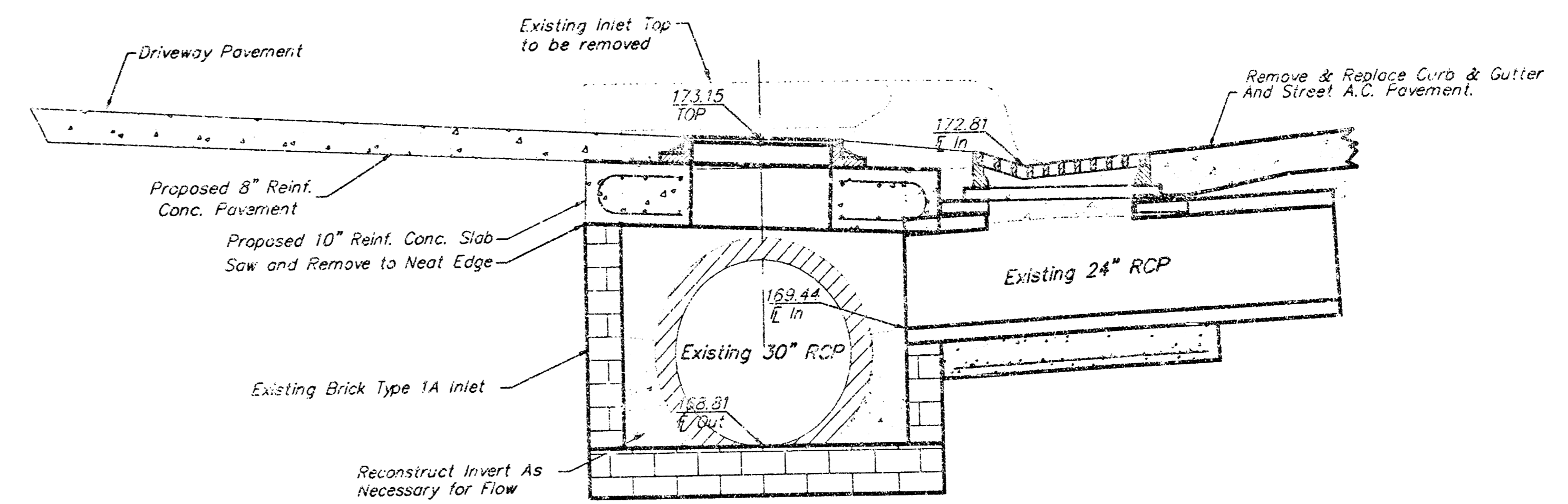
SECTION A-A



CONCRETE SLAB



SECTION B-B



SECTION AT CENTER WALL

GENERAL NOTES:

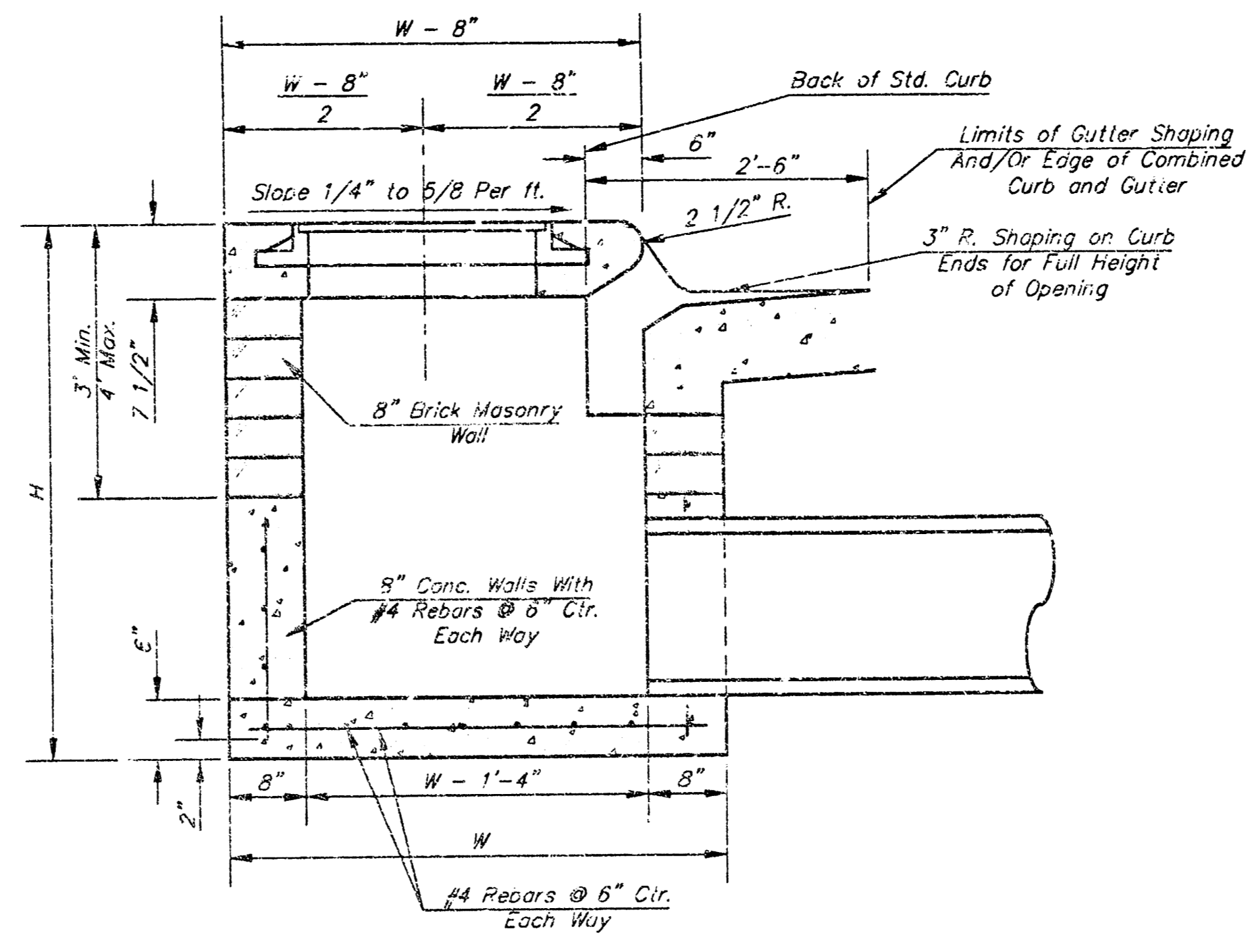
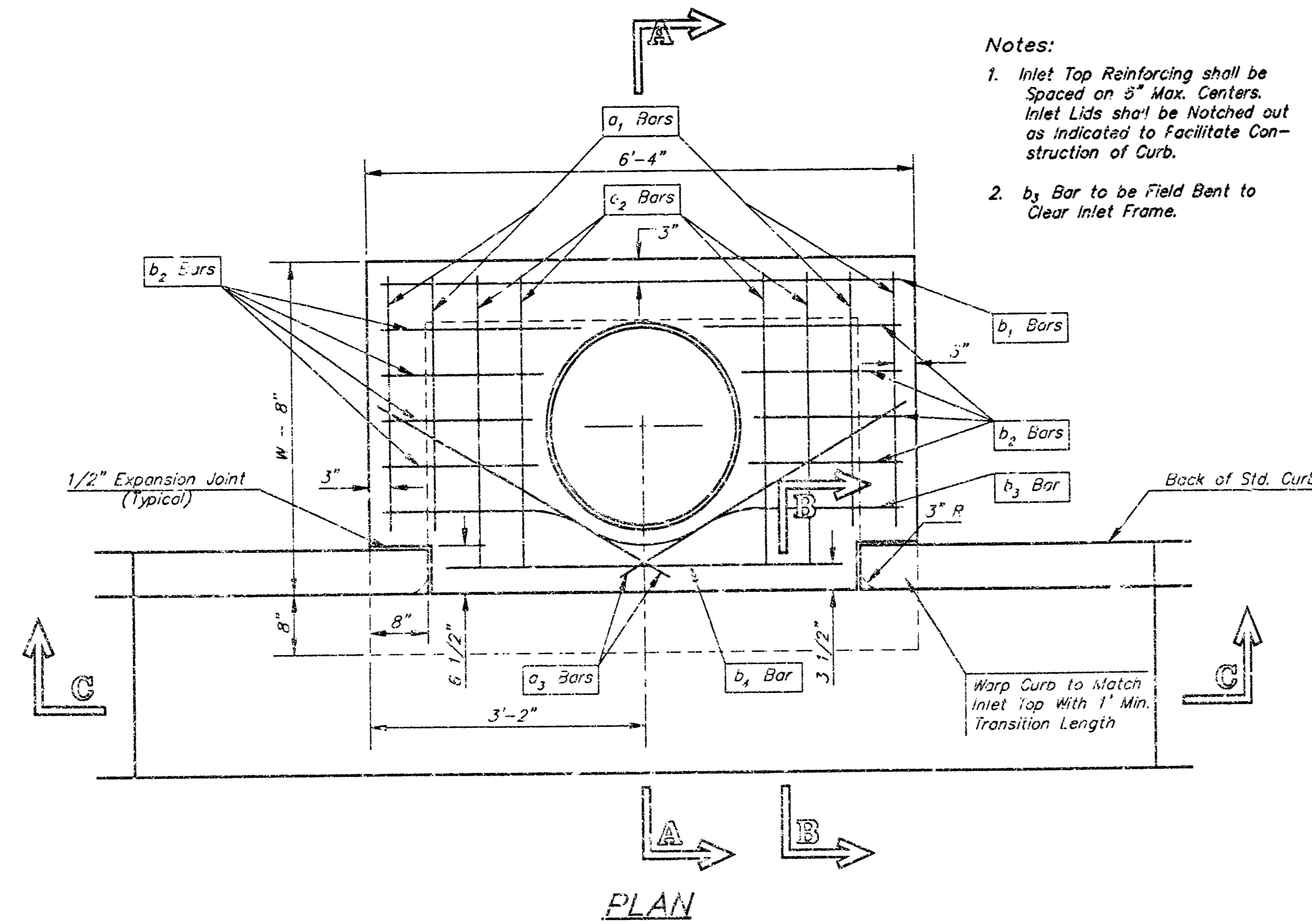
Concrete shall be C.O.W. standard paving mix. All exposed edges shall be finished with an edging tool.

Concrete tops to be installed on thin mortar cushion to insure full support along inlet walls. Concrete tops may be cast in place or precast.

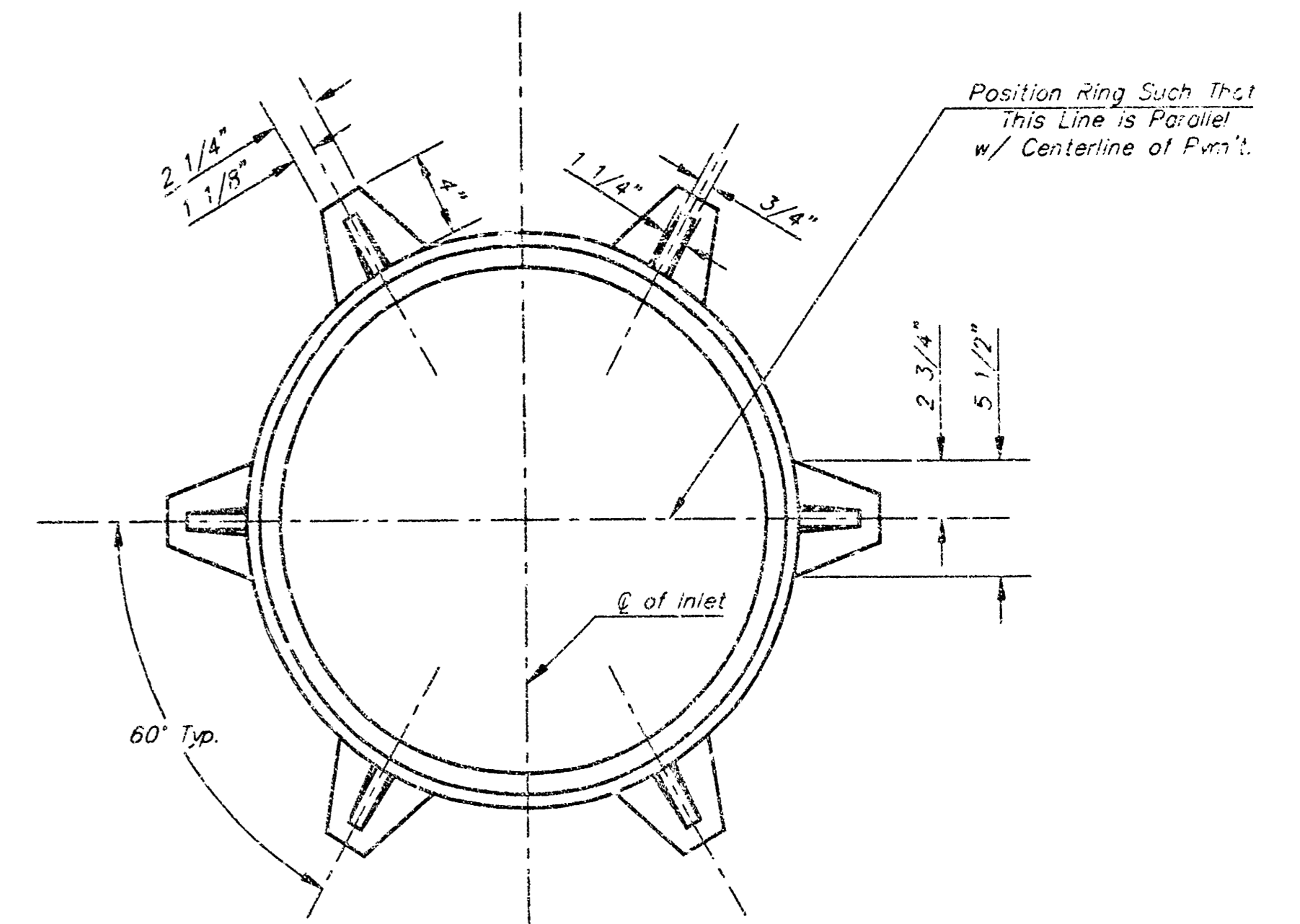
The ends of all pipes installed in inlets shall be cut off flush with the inside face of the inlet wall.

CITY OF WICHITA					
<b>INLET TO MANHOLE DETAIL</b>					
CONOCO ADDITION - LOT 1					
BAUGHMAN COMPANY P.A.					
ENGINEERING, SURVEYING, & PLANNING					
316-262-2271 • 316 ELLIS • WICHITA, KANSAS 67211					
PROJECT NUMBER					SHEET
896 PFS (607891)					3
DESIGN	DRAWN	APPROVED	DATE	SCALE	OF
NBW	SCL	NBW	01/00	NONE	6

99-08-1433

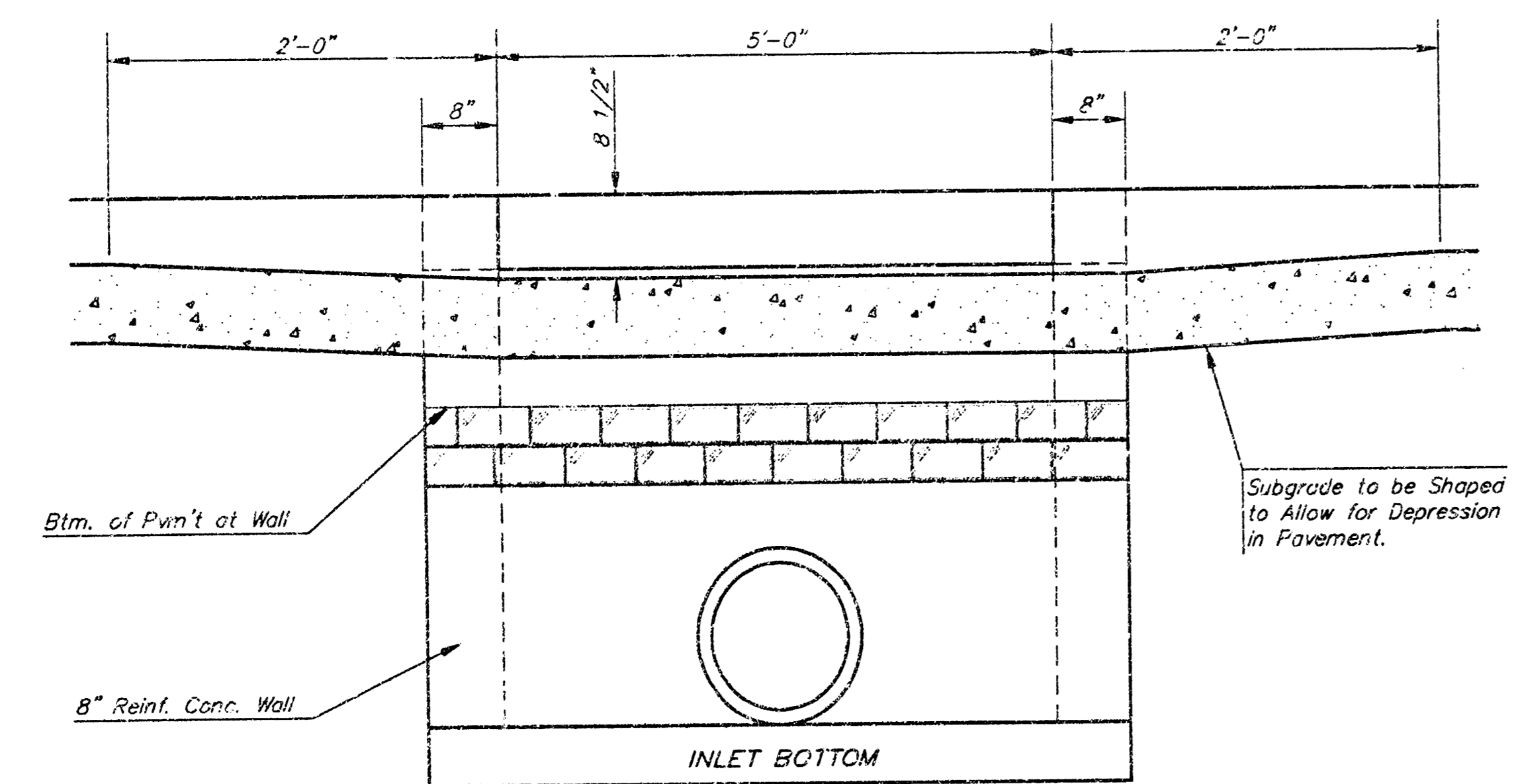


SECTION A-A

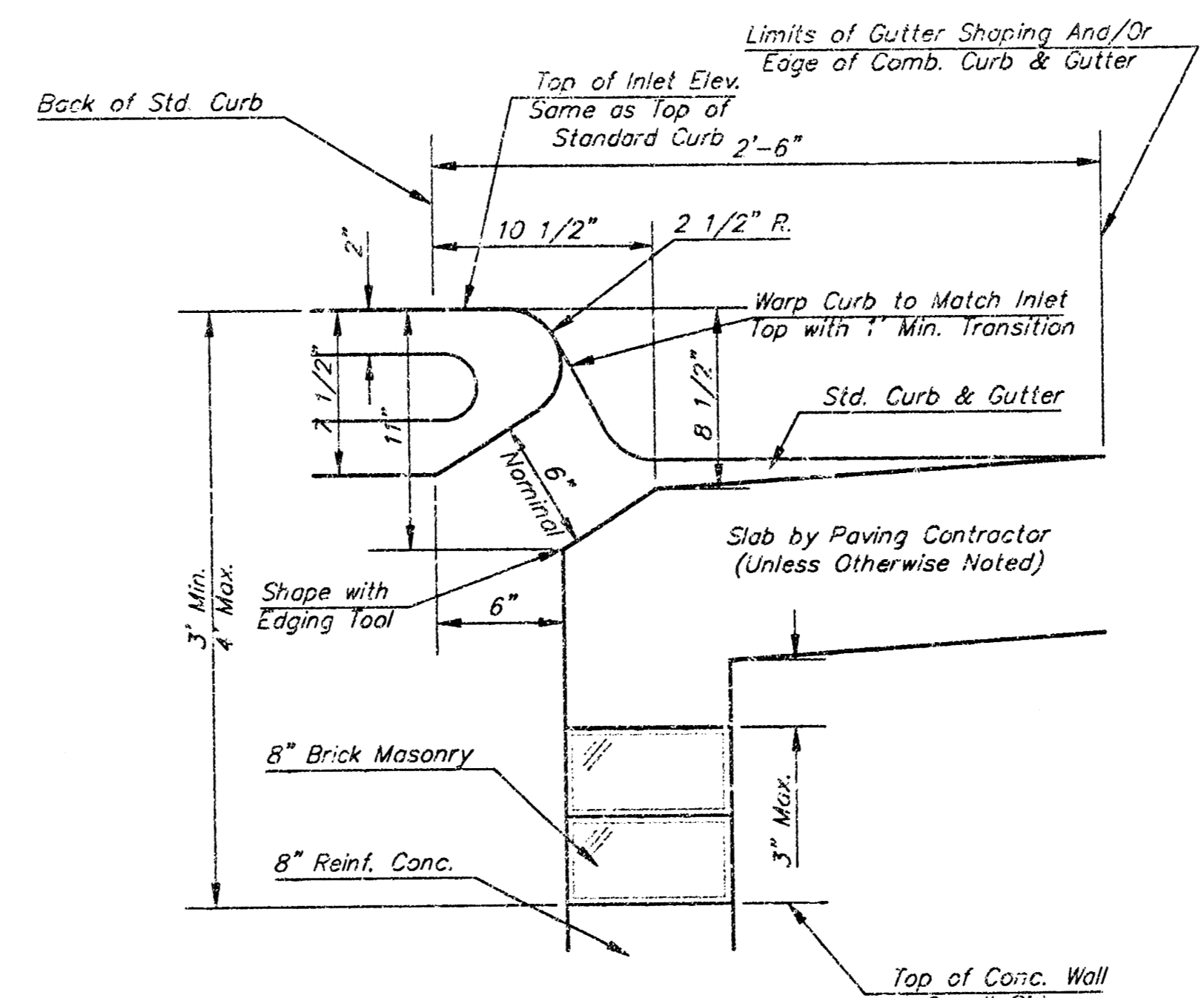


MANHOLE RING AND COVER

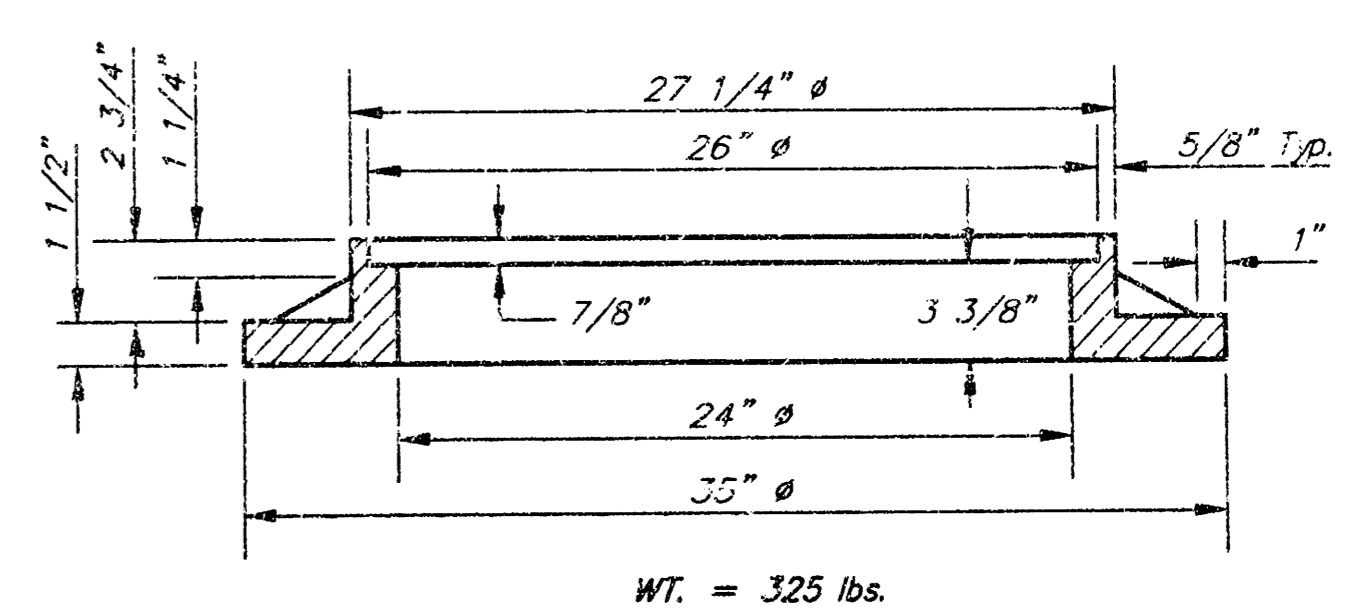
WT. = 325 lbs.  
 \*See City of Wichita Standard Manhole Ring and Cover Detail Sheet for Cover Details to Be Used With Inlet Frame.



SECTION C-C



SECTION B-B



BENDING DIAGRAM

STEEL SCHEDULE

BAR NUMBER	SIZE								b <sub>2</sub>	b <sub>3</sub>	b <sub>4</sub>	b <sub>5</sub>	b <sub>6</sub>	Wt. Lbs.
	a <sub>1</sub>	a <sub>2</sub>	a <sub>3</sub>	a <sub>4</sub>	a <sub>5</sub>	a <sub>6</sub>	a <sub>7</sub>	a <sub>8</sub>						
1	4	4	2	1	3	5	7	9	6	1	1			
LENGTH	W=4'-4"	5'-7"	6'-7"	4'-0"	6'-1"	-	-	-	1'-9"	6'-2"	4'-8"	60±		
	W=5'-4"	7'-7"	8'-7"	5'-0"	6'-1"	-	-	-	1'-9"	6'-2"	4'-8"	81±		
	W=6'-4"	9'-7"	10'-7"	6'-0"	6'-1"	-	-	-	1'-9"	6'-2"	4'-8"	101±		
	W=7'-4"	11'-7"	12'-7"	7'-0"	6'-1"	-	-	-	1'-9"	6'-2"	4'-8"	121±		
	W=8'-4"	13'-7"	14'-7"	8'-0"	6'-1"	-	-	-	1'-9"	6'-2"	4'-8"	141±		
	W=9'-4"	15'-7"	16'-7"	9'-0"	6'-1"	-	-	-	1'-9"	6'-2"	4'-8"	161±		

Note: a<sub>3</sub> Bars to be Placed Approx. 2" Below Top of Inlet Cover.

STANDARD CURB INLET PRECAST TOPS

W	PRE-CAST TOP SIZE	PIPE SIZE	CU. YD. CONC.
4'-4"	3'-8" 6'-4" 7 1/2"	21" & SMALLER	0.38±
5'-4"	4'-8" 6'-4" 7 1/2"	24" & 30"	0.51±
6'-4"	5'-8" 6'-4" 7 1/2"	36" & 42"	0.64±
7'-4"	6'-8" 6'-4" 7 1/2"	48" & 54"	0.77±
8'-4"	7'-8" 6'-4" 7 1/2"	60" & 66"	0.90±

GENERAL NOTES

- Concrete tops to be installed on thin mortar cushion to insure full support along brick walls. Concrete tops may be cast in place or precast. Concrete used for inlet construction shall be concrete pavement mix.
- Contractor shall have the option of constructing 8" brick masonry walls between the concrete inlet base and top on this inlet when W=6'-4" and H=7'-0" or less.
- Inlet invert shall be shaped with 8 sack sand mix concrete to create flow channels and to increase hydraulic efficiency such that the inlet will be self cleaning between all inlet and/or outlet pipes.
- The ends of all pipes installed in inlets shall be cut off flush with the inside face of the inlet wall.

Revised - Dec. 21, 1984

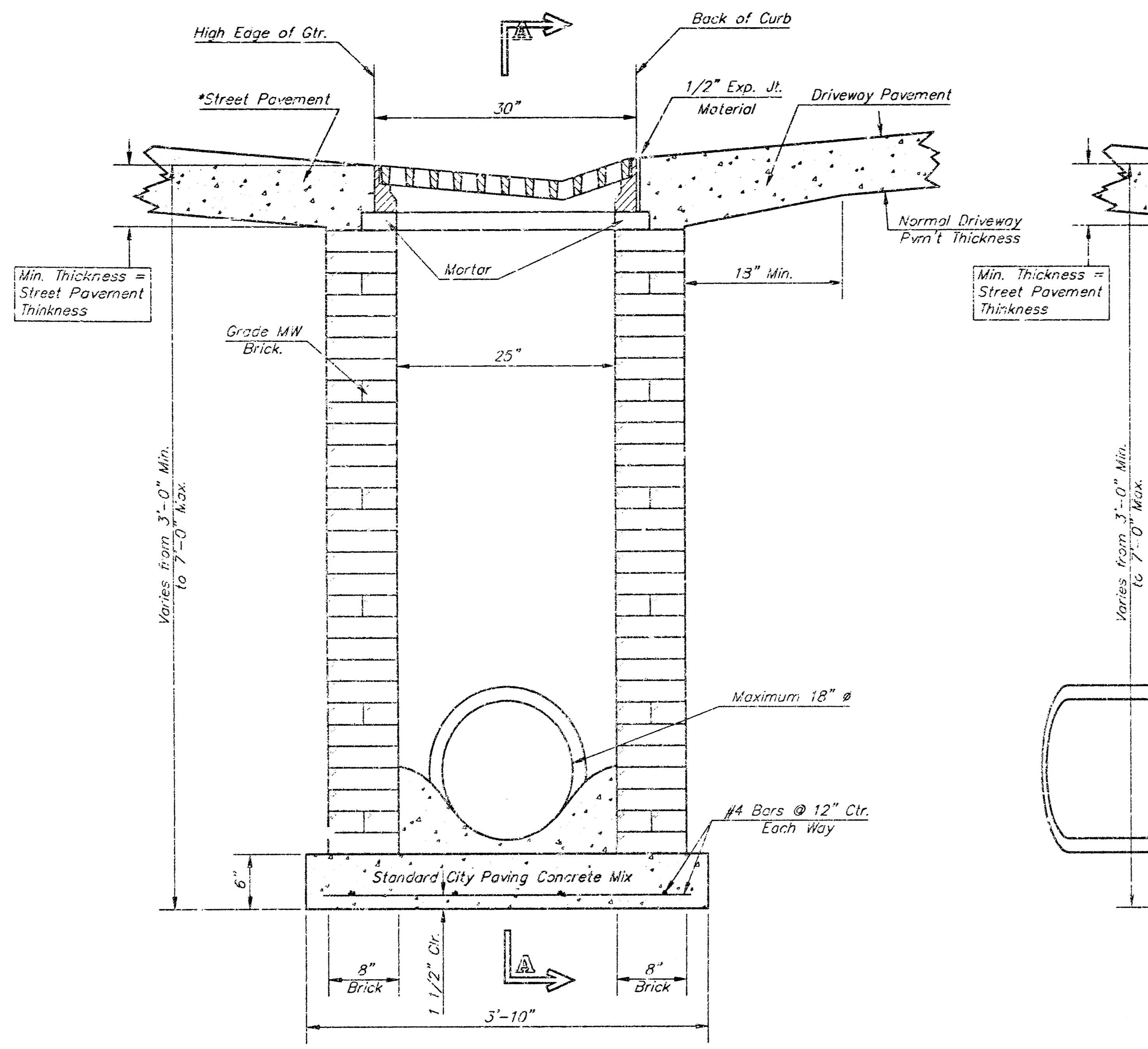
CITY OF WICHITA, KANSAS  
**TYPE 1 CURB INLET**  
 INLET OPENING = 8"X5'-0"

**BAUGHMAN COMPANY P.A.**  
 ENGINEERING, SURVEYING, & PLANNING  
 316-262-7271 • 318 ELLIS • WICHITA, KANSAS 67211

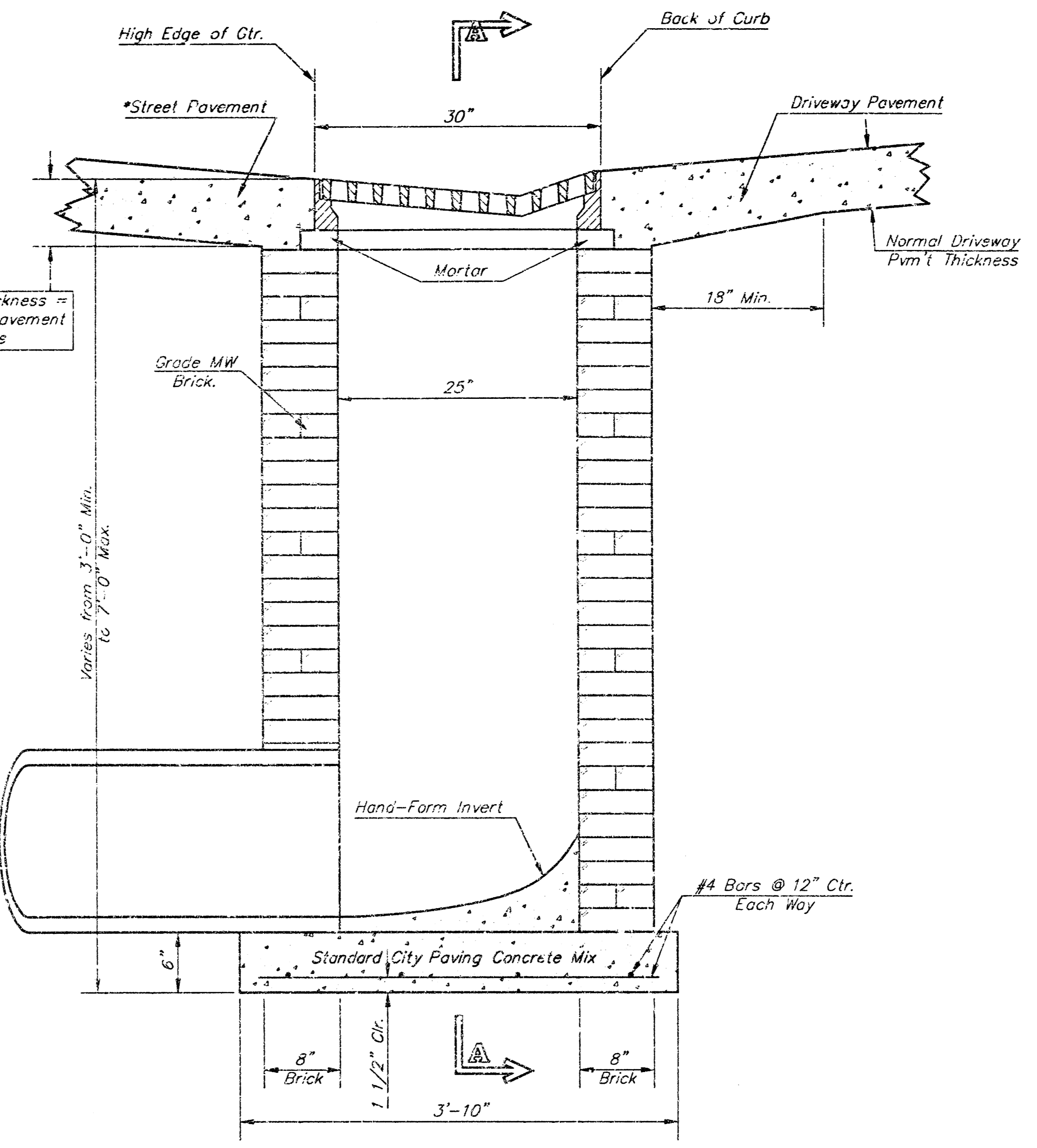
PROJECT NUMBER  
**966 PPS (807981)**

DESIGN: C.O.W. DRAWN: STAFF APPROVED: DATE: 12/18/98 SCALE: NONE

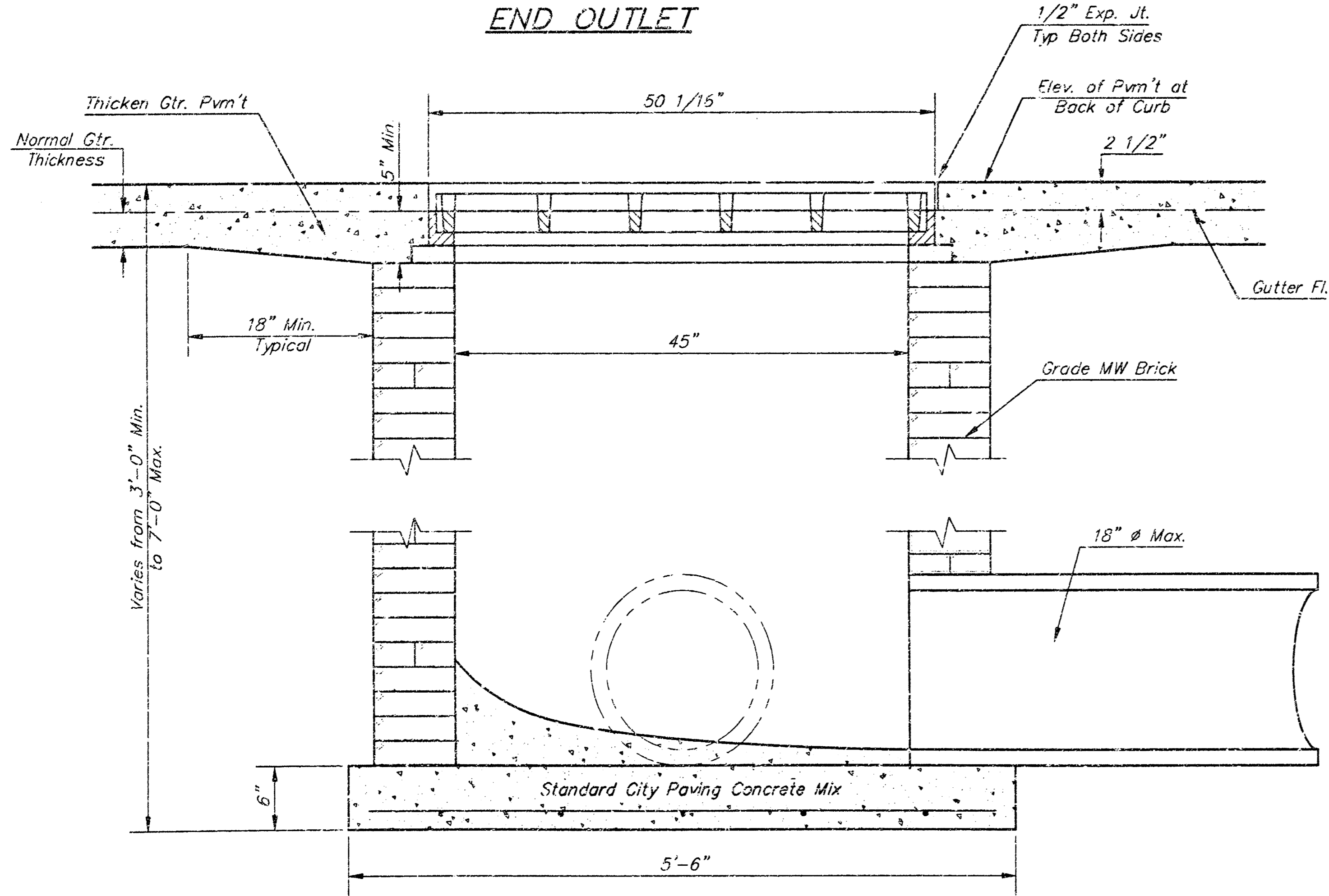
SHEET 4 OF 6



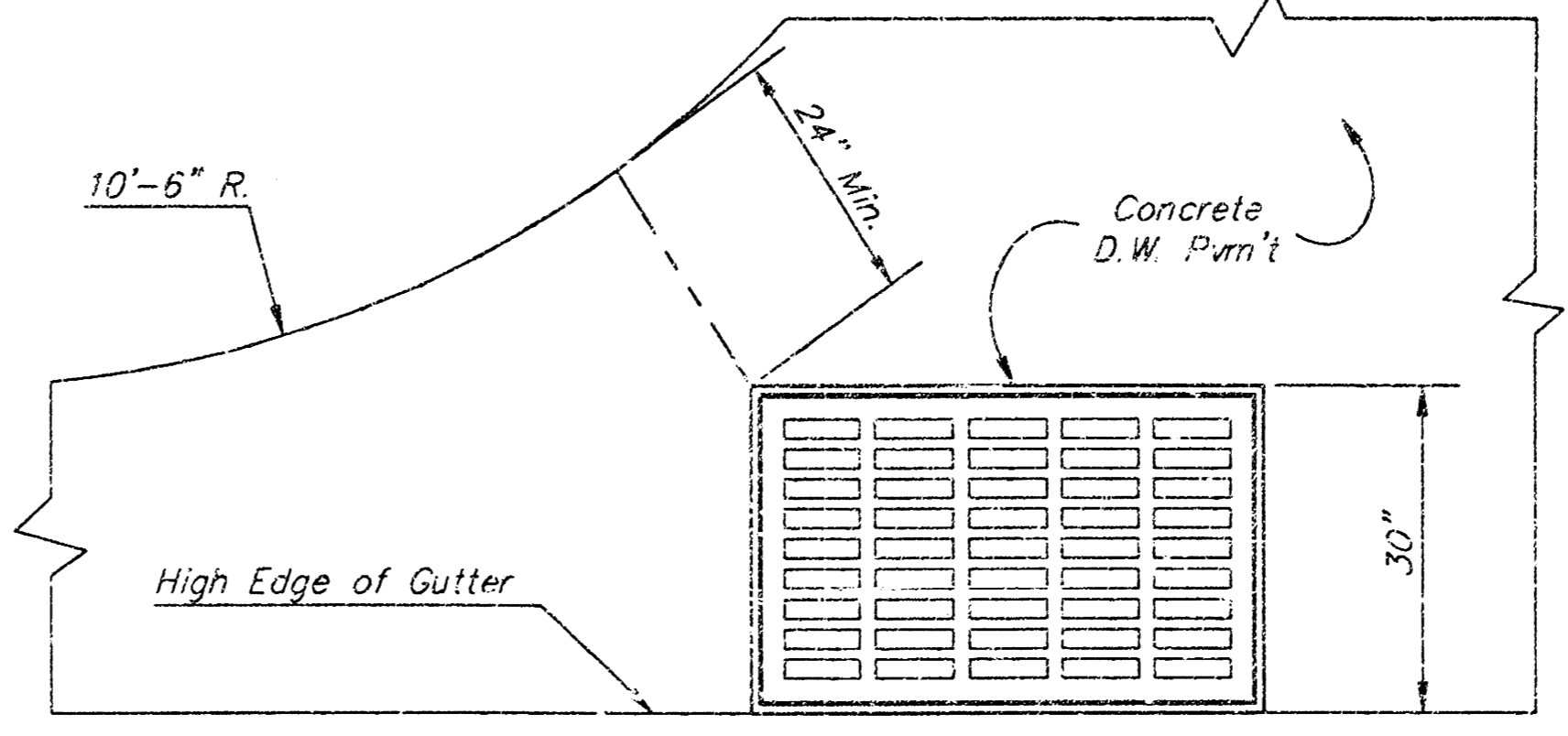
END OUTLET



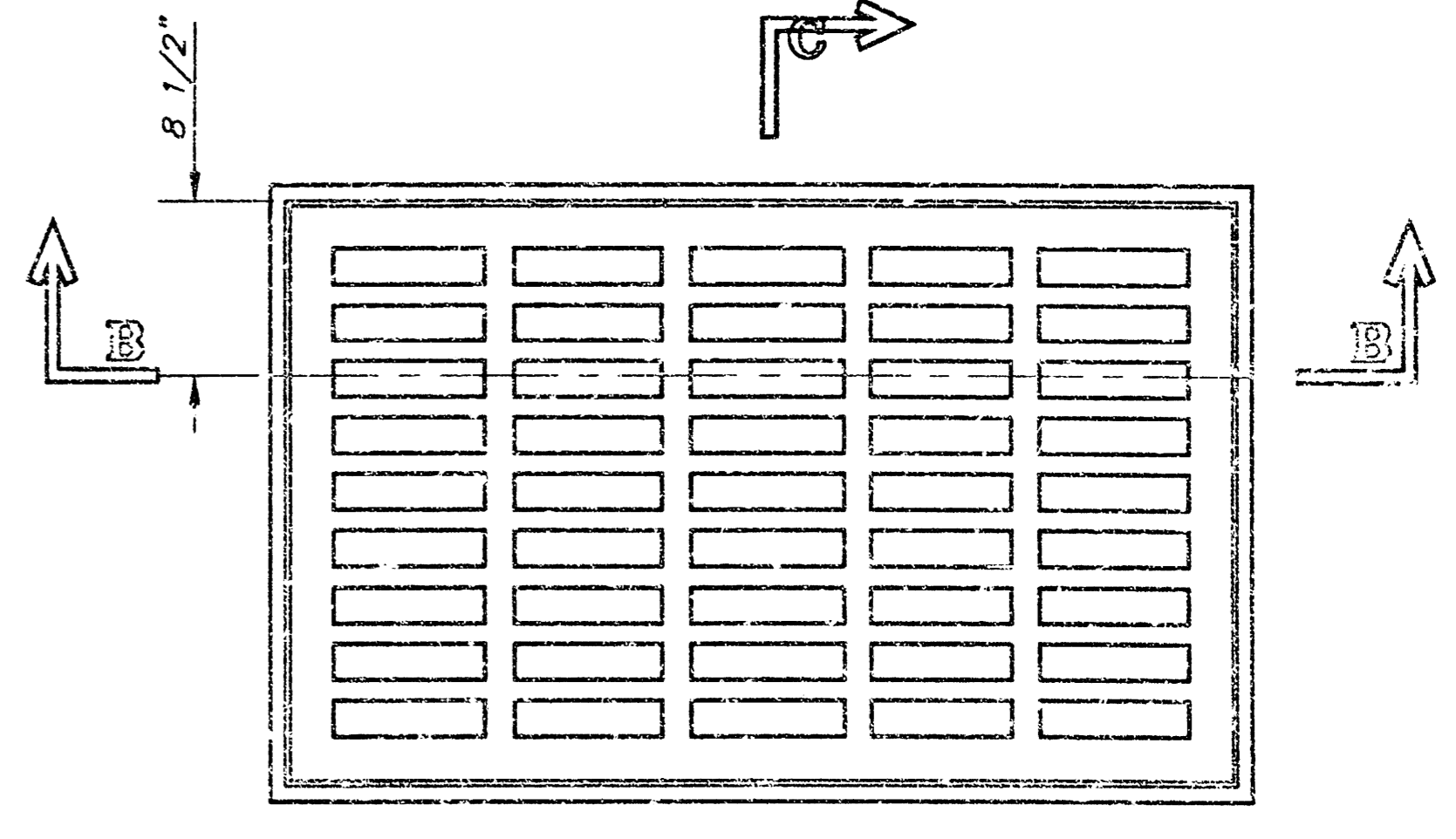
SIDE OUTLET



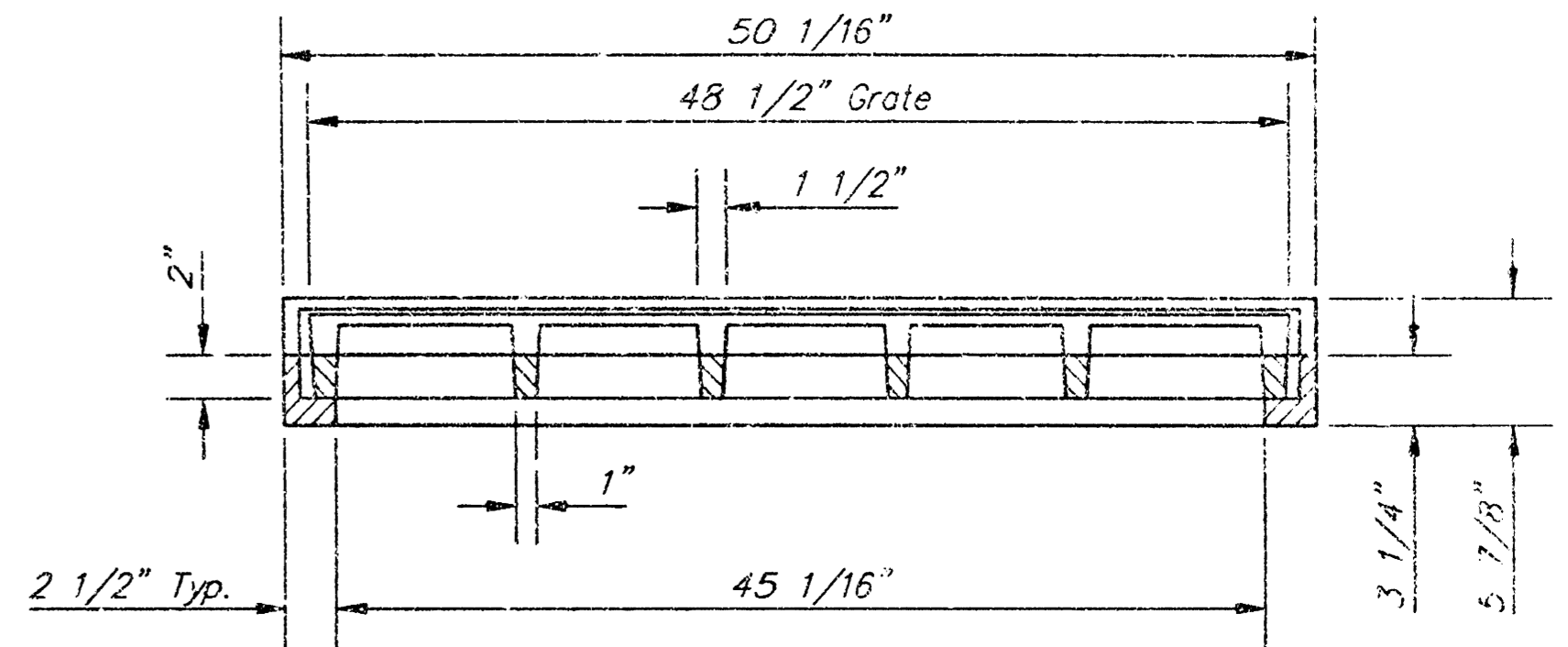
SECTION A-A



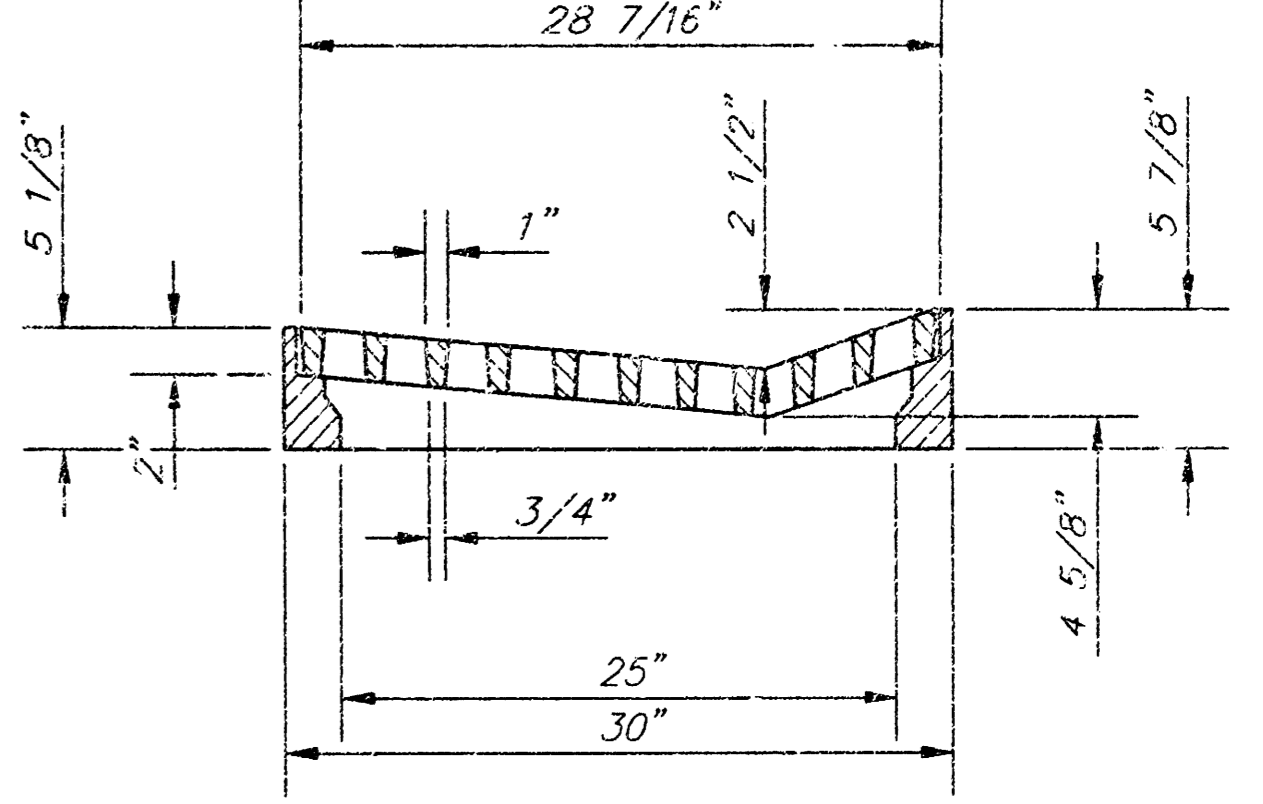
PLAN



PLAN



SECTION B-B



SECTION C-C

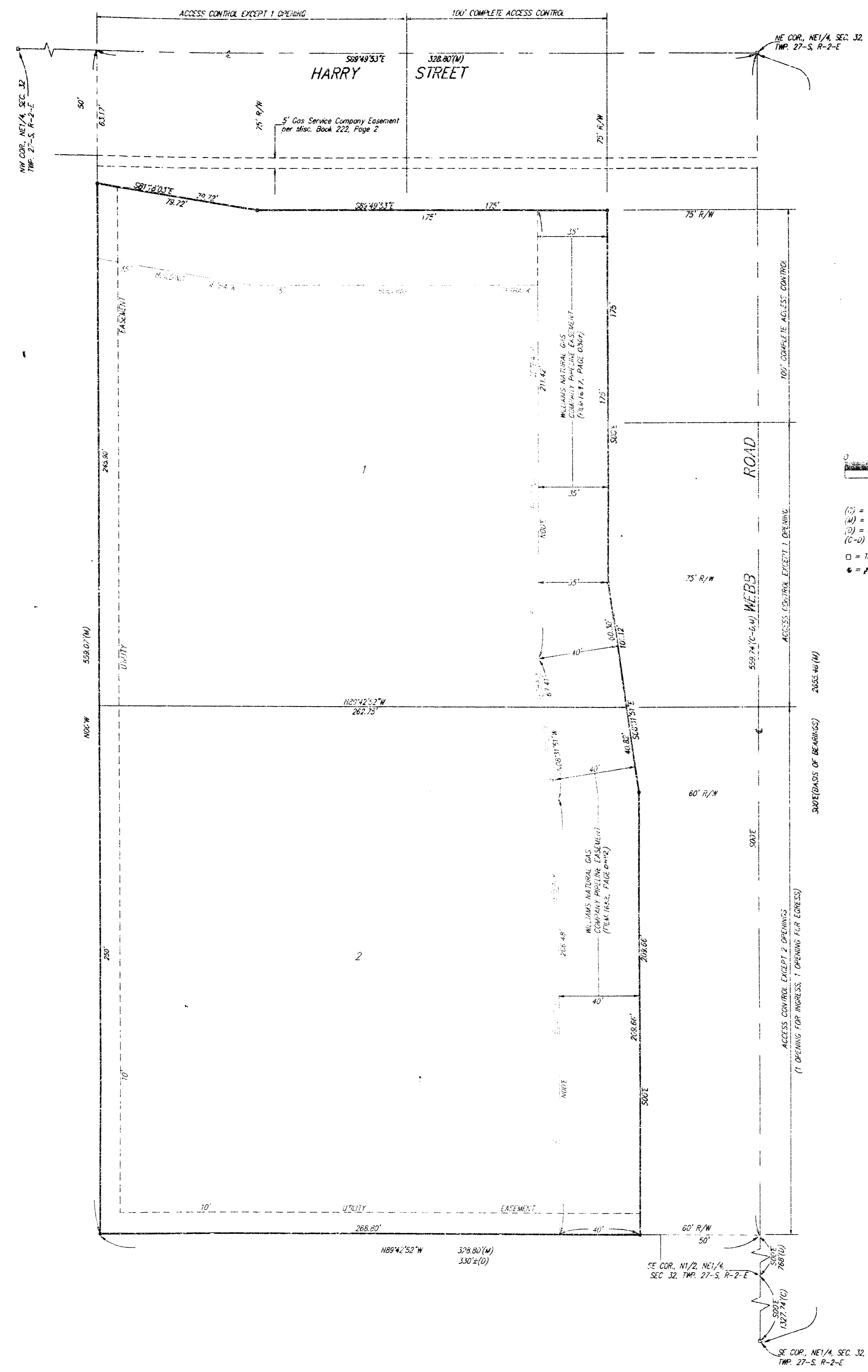
GENERAL NOTES

1. Grate frame to be installed on thin mortar cushion to insure full support along brick walls. Concrete used for inlet construction shall be concrete pavement mix.
2. Inlet invert shall be shaped with 8 sack sand mix concrete to create flow channels and to increase hydraulic efficiency such that the inlet will be self cleaning between all inlet and/or outlet pipes.
3. The ends of all pipes installed in inlets shall be cut off flush with the inside face of the inlet wall.
4. Inlet Frame and Grate to be Deeter #2095 or approved equal.

DEETER #2095 FRAME & GRATE  
TOTAL WEIGHT: 705 lbs.

CITY OF WICHITA					
<b>STANDARD DRIVE INLET</b>					
REXSTILLER ADDITION					
BAUGHMAN COMPANY P.A.					
ENGINEERING, SURVEYING, & PLANNING					
318-262-7371 • 315 ELLIS • WICHITA, KANSAS 67211					
PROJECT NUMBER <b>858 PFS (607881)</b>					SHEET
DESIGN STAFF					5
DRAWN STAFF					6
APPROVED					DATE
SCALE					None

# CONOCO ADDITION WICHITA, SEDGWICK COUNTY, KANSAS



State of Kansas) SS We, Baughman Company, P.A., Surveyors in  
Sedgwick County and State do hereby certify that we have surveyed  
and platted "CONOCO ADDITION", Wichita, Sedgwick County, Kansas,  
and that the accompanying plat is a true and correct exhibit of the  
property surveyed, described as follows: Part of the east 10 acres  
of the N1/2 of the NE1/4 of Sec. 32, Twp. 27-S, R-2-E of the 6th P.M.,  
Sedgwick County, Kansas, described as beginning 763 feet north of the  
SE Corner of the N1/2 of said NE1/4; thence west, 330 feet, more or  
less, to the west line of said east 10 acres; thence north to the north  
line of said NE1/4; thence east to the NE Corner of said NE1/4; thence  
south to beginning.

Existing public easements and dedications being vacated by virtue  
of K.S.A. 12-512(b).  
Baughman Co., P.A.

*Michael G. Conroy* 10-22-96 Surveyor  
Michael G. Conroy

- (C) = Calculated
- (M) = Measured
- (D) = Described
- (C-M) = Calculated per Described info.
- = Thimble Found
- ⊕ = #4 Baughman Rebar Set

This plat of "CONOCO ADDITION", Wichita,  
Sedgwick County, Kansas has been submitted to and approved by the  
Wichita, Sedgwick County Metropolitan Area Planning Commission,  
Wichita, Kansas.  
Dated this 3<sup>rd</sup> day of June, 1996.  
Wichita-Sedgwick County Metropolitan Area Planning Commission

*Susan Osborne-Howes*  
Susan Osborne-Howes  
*Marvin S. Krout*  
Marvin S. Krout Secretary

This plat approved and all dedications  
shown hereon accepted by the City Council of the City of Wichita,  
Kansas, this 19<sup>th</sup> day of November, 1996.

*Bob Knight*  
Bob Knight Mayor  
*Pat Burnett*  
Pat Burnett City Clerk

Know all men by these presents that we,  
the undersigned, have caused the land in the surveyors certificate  
to be platted into Lots and Streets to be known as "CONOCO ADDITION",  
Wichita, Sedgwick County, Kansas. The utility easements are hereby  
granted as indicated for the construction and maintenance of all public  
utilities. The streets are hereby dedicated to and for the use of the public.  
All abutters rights of access to or from Harry Street over and across  
the north line of Lot 1 are hereby granted to the City of Wichita, Kansas  
provided, however, that Lot 1 shall have access to Webb Road at one  
location over all except the east 100 feet of said north line as shall be  
determined by the City Engineer of the City of Wichita, Kansas. All  
abutters rights of access to or from Webb Road over and across the east  
line of Lot 1 are hereby granted to the City of Wichita, Kansas provided,  
however, that Lot 1 shall have access to or from Webb Road at one  
location over all except the north 100 feet of said east line as shall be  
determined by the City Engineer of the City of Wichita, Kansas. All  
abutters rights of access to or from Webb Road over and across the  
east line of Lot 2 are hereby granted to the City of Wichita, Kansas  
provided, however, that Lot 2 shall have access to Webb Road at two  
locations, (one opening for ingress and one opening for egress), as shall  
be determined by the City Engineer of the City of Wichita, Kansas.

Conoco Inc., a Delaware Corporation  
*W.R. Gover*  
W.R. Gover Attorney-in-Fact

Entered on transfer record this 16<sup>th</sup> day  
of December, 1996.

*Brent W. Shelton*  
Brent W. Shelton County Clerk  
for Susan E. Crockett-Spoon

State of Kansas) SS This is to certify that this plat has been  
Sedgwick County) filed for record in the office of the Register of Deeds, this 10<sup>th</sup> day  
of December, 1996, at 9:02 o'clock P.M. and is duly  
recorded.

*Pat Kettler*  
Pat Kettler Register of Deeds  
by Diana Manheimer  
*Ed Resa*  
Ed Resa Deputy

State of Texas) SS The foregoing instrument acknowledged before  
Harris County) me, this 24<sup>th</sup> day of October, 1996, by W.R. Gover, Attorney-in-  
Fact, of Conoco Inc., a Delaware Corporation, on behalf of the corporation.

*Kathy O. Williams*  
Kathy O. Williams Notary Public  
My App't. Exp. 02/29/00

1572641

AT 40 00 01