

STORM WATER SEWER IMPROVEMENTS

to serve

Village Charters 2nd Addition

CITY OF WICHITA, KANSAS

Michael E. Lindebak, P.E. City Engineer

Private Project Number

970 PPB (607881)

BENCHMARK

City of Wichita Dec Located Intersection of 21st Street North & Tyler Road.
Elevation: 170.95 City Datum.

LEGAL DESCRIPTION

Lot 1, Block A, Village Charters 2nd Addition, Wichita, Sedwick County, Kansas, EXCEPT therefrom the following described tract: Beginning at the NW corner of Lot 1, Block A, Village Charters 2nd Addition, Wichita, Sedwick County, Kansas; thence S00°00'20"W along the west line of said Lot 1, 152.85 feet to a corner in the west line of said Lot 1; thence N89°14'16"E parallel with the north line of said Lot 1, 300.00 feet to a point on the east line of said Lot 1; thence S00°00'20"E along the west line of said Lot 1, 152.85 feet to the NE corner of said Lot 1; thence S89°14'16"W along the north line of said Lot 1, 300.00 feet to the point of beginning.

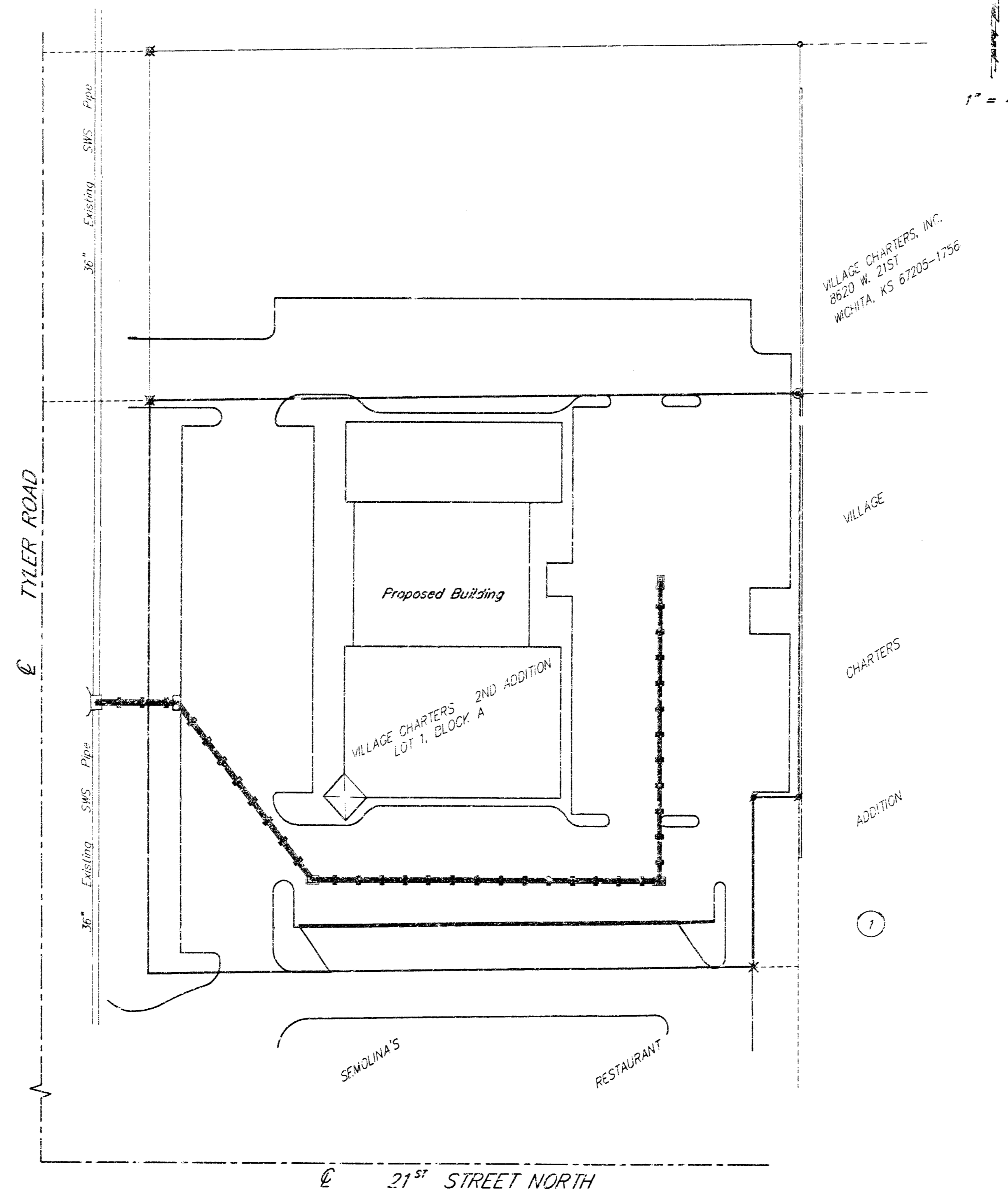
GENERAL NOTES

- Contractor will be required to provide notice to utility companies a minimum of forty-eight (48) hours prior to any excavation, as follows:
Kansas One-Call 887-2470
The Contractor must notify the following in case of an emergency:

Multimedia Cablevision	262-4270
Kansas Gas Service Company	383-0600
Kansas Gas Electric Company	383-0600
Peoples Gas Company	342-7806
Southwestern Bell Telephone Company	1-571-2611
City of Wichita Water Department	268-4908
City of Wichita Sewer Department	268-4071
- Utility service lines, poles, valve boxes, meters, et cetera are to be adjusted as necessary by others prior to construction unless the plans specifically call for their adjustment by the Contractor or unless the plans specifically identify a utility to be adjusted by its owner during construction. Existing utilities and their location, as shown on the plans represent the best information obtainable for design and shall be field verified. The contractor will be required to work around existing utilities within the right-of-way which do not conflict with proposed construction.
- All disturbed areas not intended for pavement or sidewalk construction shall be seeded with Kansas Premium Fescue Blend at a rate of 8 lb./1000 Sq. Ft., fertilized with a 16-20-8 ratio at a rate of 4 lb./1000 Sq. Ft., and mulched with Prairie Hay at a rate of 92 lb./1000 Sq. Ft. which shall be "ratted" with forks or punched into soil to reduce loss due to wind.
- Trees and shrubs in public right-of-way which are in direct conflict with proposed new construction shall be removed by the Contractor with the Engineer's approval. Trees and shrubs which are not in direct conflict with proposed new construction shall be saved and protected from damage.
- Contractor shall not start work on the project until the project inspector is assigned to the project and is present on the site. Any work done without inspection will be required to be uncovered for inspection.
- Rubble from the removal of miscellaneous structures and excess excavation which is to be wasted shall be disposed of on sites to be provided by the Contractor. These sites shall be approved by the Engineer as to suitability, appearance and site location. Locations that, in the opinion of the Engineer, will leave an unsightly appearance will not be approved. All disposal sites must be approved by the Kansas Department of Health and Environment. Material either stockpiled or disposed of in a flood plain would require a Kansas State Board of Agriculture permit. Any material dumped in waters of the United States or wetlands is subject to U.S. Corps of Engineers permitting regulations. Any material buried or stockpiled beyond approved construction limits would require additional archeological investigations unless buried in a previously approved borrow location.

INDEX:

Cover Sheet	1
Plan/Profile Sheet	2-3
Drop Inlet Detail	4
Curb Inlet Detail	5
Copy Of Plan	6

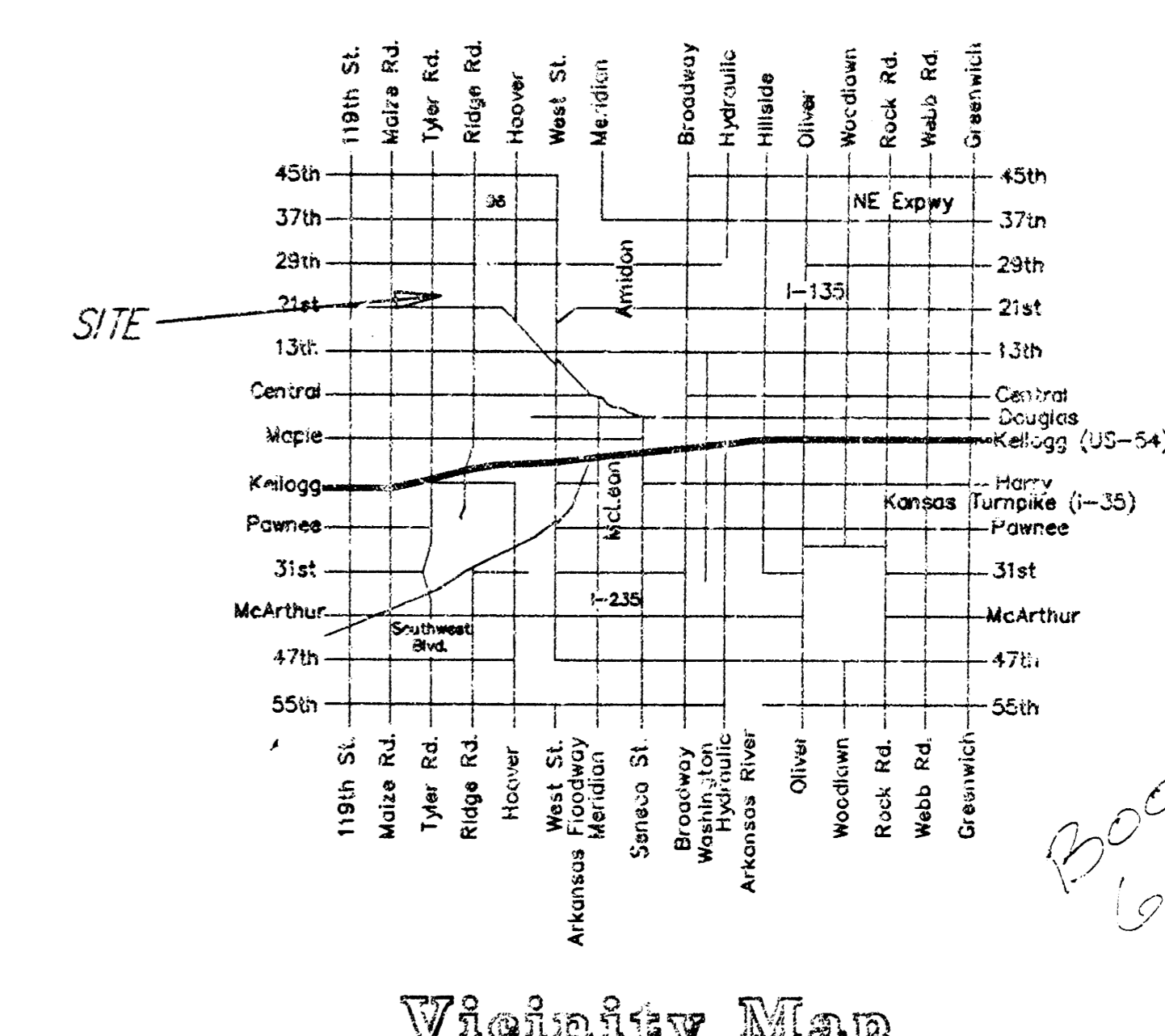


APPROVED AS NOTED
BY CITY ENGINEER OF WICHITA

Storm Sewers UR# 12/21/99

NOTE TO CONTRACTORS

Inspection and testing in this project is to be provided by a Licensed Consulting Engineering Firm under contract with the Owner/Developer. Said inspection to be in accordance with the City of Wichita standard construction engineering practices and certified by a Licensed Professional Engineer. No work shall be performed in dedicated easements or public right-of-way by the Contractor without such inspection nor shall any work be commenced without written authorization by the City Engineer. All Construction and Materials shall comply with the City of Wichita Specifications and Standards (on file and available in the City Engineer's Office).



PROJECT INSPECTED + ASBUILT BY
BAUGHMAN COMPANY, P.A. 3/2000 IMM

BAUGHMAN COMPANY
ENGINEERING, SURVEYING, & PLANNING
316-267-7271 • 315 ELLIS • WICHITA, KANSAS 67211

BENCHMARK

City of Wichita Disc Located Intersection of 21st Street North & Tyler Road.
Elevation: 170.95 City Datum.

LEGAL DESCRIPTION

Lot 1, Block A, Village Charters 2nd Addition, Wichita, Sedwick County, Kansas, EXCEPT thereon the following described tract: Beginning at the NW corner of Lot 1, Block A, Village Charters 2nd Addition, Wichita, Sedwick County, Kansas; thence S00°00'00"W along the west line of said Lot 1, 152.88 feet to a corner in the west line of said Lot 1; thence N89°14'16"E parallel with the north line of said Lot 1, 300.01 feet to a point on the east line of said Lot 1; thence N00°00'00"E along the east line of said Lot 1, 152.88 feet to the NE corner of said Lot 1; thence S89°14'16"W along the north line of said Lot 1, 300.00 feet to the point of beginning.

Sta. 0+00.0, Begin Line 1.
Core into Existing Inlet.
Install 18" RCP.
Reconstruct Inlet & Invert
As Necessary For Flow.
Grout & Seal Water Tight.
Flow = 161.95 (E)
Remove 10" Pipe Stub
Extending (E).

CAUTION! VERIFY
8" CS Peoples Natural Gas Line

Sta. 0+37.5
Construct Type-1 Curb Inlet
(6'-4"x4'-4") With 18"
SWS Pipe Extending (SE).
Top Elev. = 168.35

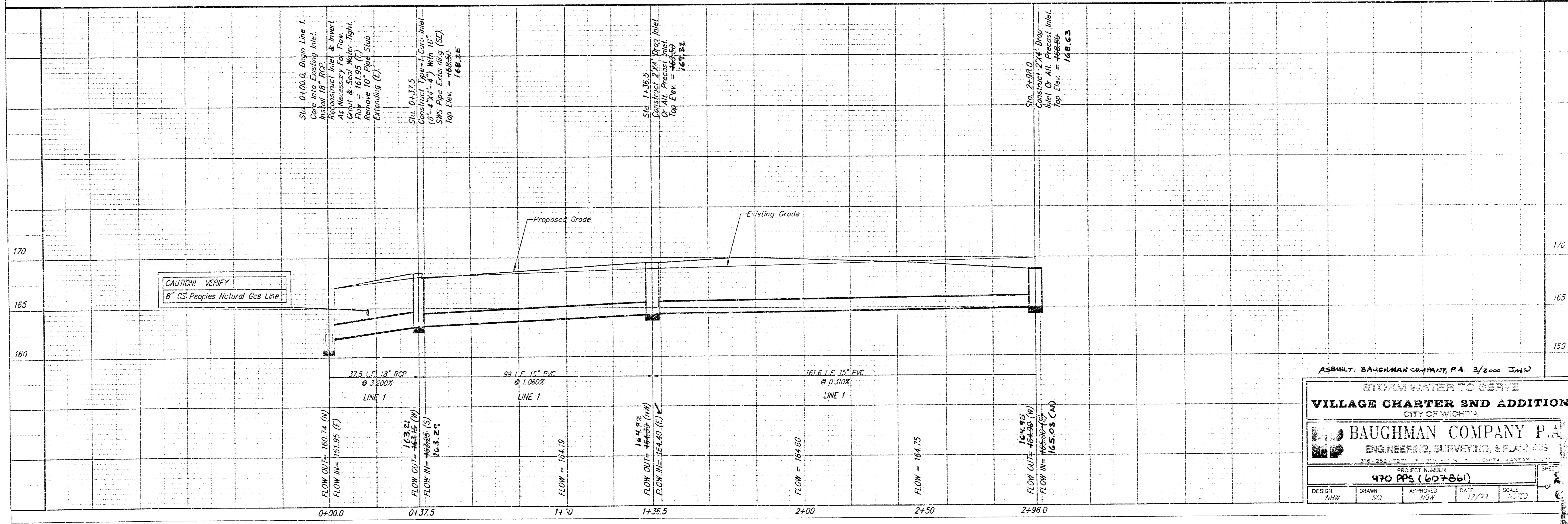
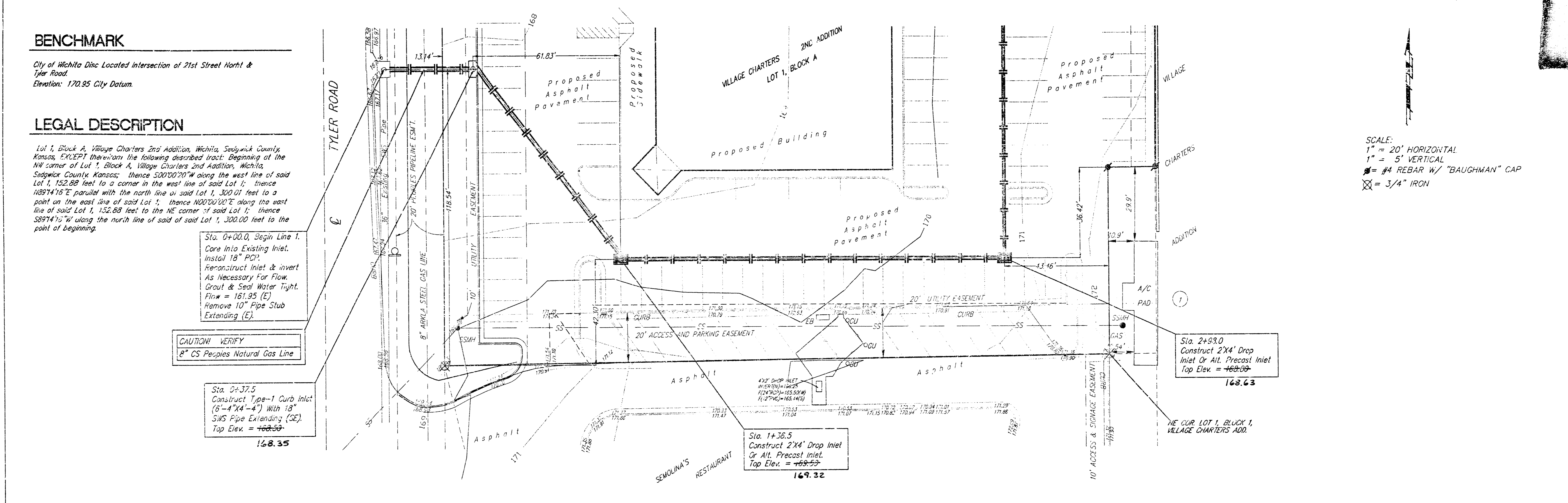
168.35

Sta. 1+36.5
Construct 2'x4' Drop Inlet
Or Alt. Precast Inlet.
Top Elev. = 169.32

Sta. 2+93.0
Construct 2'x4' Drop
Inlet Or Alt. Precast Inlet
Top Elev. = 168.63

168.63

SCALE:
1" = 20' HORIZONTAL
1" = 5' VERTICAL
= #4 REBAR W/ "BAUGHMAN" CAP
X = 3/4" IRON



ASBUILT: BAUGHMAN COMPANY, P.A. 3/2000 3.14.0

STORM WATER TO SEWER
VILLAGE CHARTER 2ND ADDITION
CITY OF WICHITA

BAUGHMAN COMPANY P.A.
ENGINEERING, SURVEYING, & PLANNING
316-262-7271 212 E. OLIVE ST. WICHITA, KANSAS 67202

PROJECT NUMBER
970 PPS (607861)

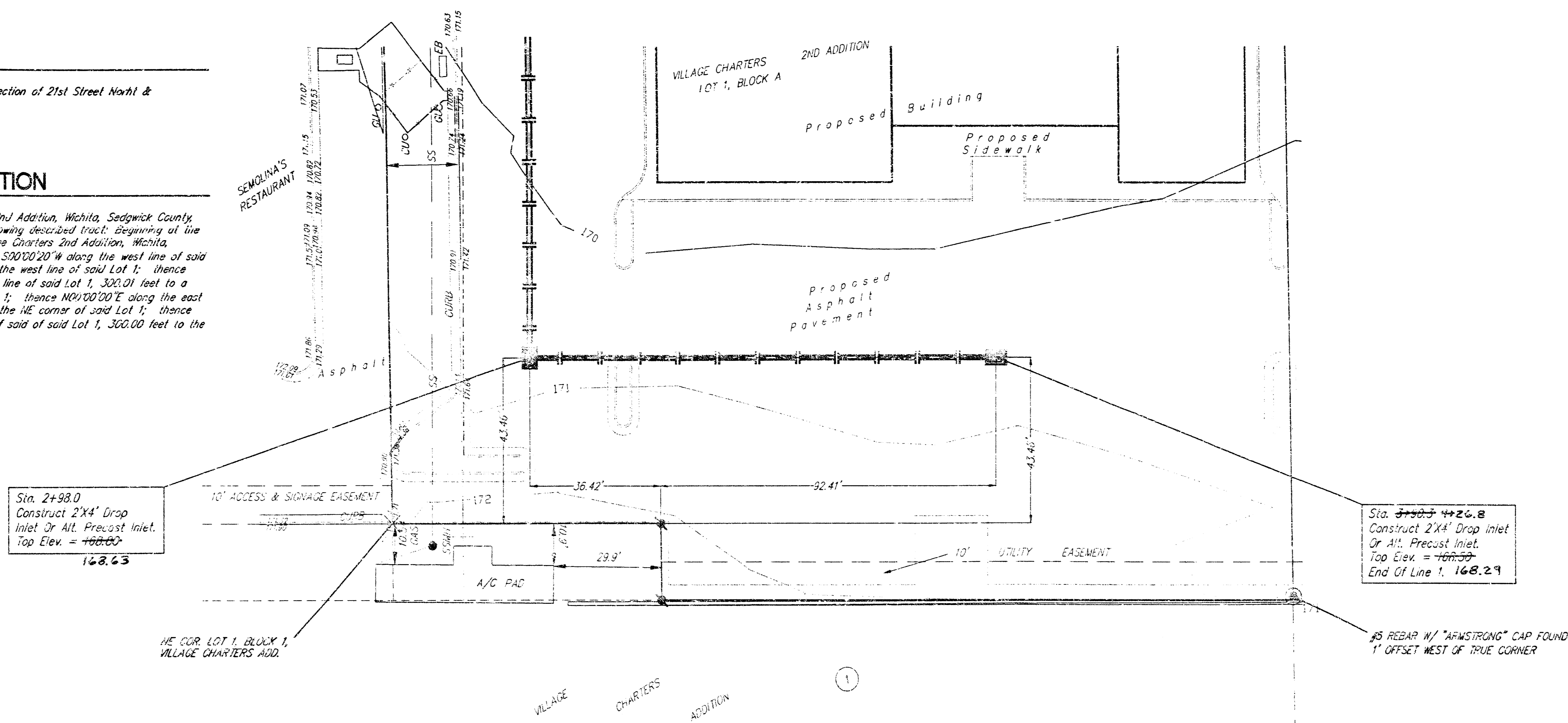
DESIGN NSW	DRAWN SCL	APPROVED NSW	DATE 12/29	SCALE NOTED
---------------	--------------	-----------------	---------------	----------------

BENCHMARK

City of Wichita Disc Located Intersection of 21st Street North & Iyer Road.
Elevation: 170.95 City Datum.

LEGAL DESCRIPTION

Lot 1, Block A, Village Charters 2nd Addition, Wichita, Sedgwick County, Kansas, EXCEPT therefrom the following described tract: Beginning at the NW corner of Lot 1, Block A, Village Charters 2nd Addition, Wichita, Sedgwick County, Kansas; thence S00°00'20" W along the west line of said Lot 1, 152.88 feet to a corner in the west line of said Lot 1; thence N89°14'16" E parallel with the north line of said Lot 1, 300.01 feet to a point on the east line of said Lot 1; thence N0°00'00" E along the east line of said Lot 1, 152.88 feet to the NE corner of said Lot 1; thence S89°14'16" W along the north line of said Lot 1, 300.00 feet to the point of beginning.



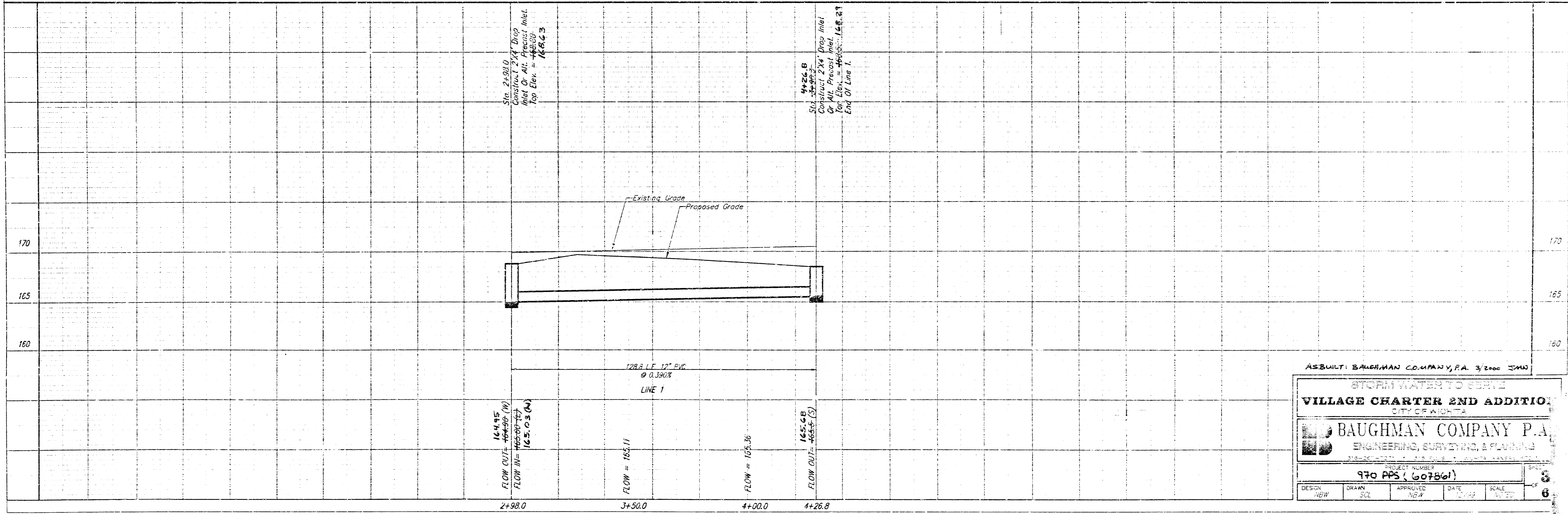
SCALE:
1" = 20' HORIZONTAL
1" = 5' VERTICAL
⊕ = #4 REBAR W/ "BAUGHMAN" CAP
⊙ = #5 REBAR W/ ARMSTRONG CAP

Sta. 2+98.0
Construct 2'x4' Drop Inlet Or Alt. Precast Inlet.
Top Elev. = 168.63

Sta. 4+26.8
Construct 2'x4' Drop Inlet Or Alt. Precast Inlet.
Top Elev. = 168.29
End Of Line 1, 168.29

NE COR LOT 1, BLOCK 1, VILLAGE CHARTERS ADD.

#5 REBAR W/ "ARMSTRONG" CAP FOUND 1' OFFSET WEST OF TRUE CORNER



ASBUILT: BAUGHMAN COMPANY, P.A. 3/2008 2000

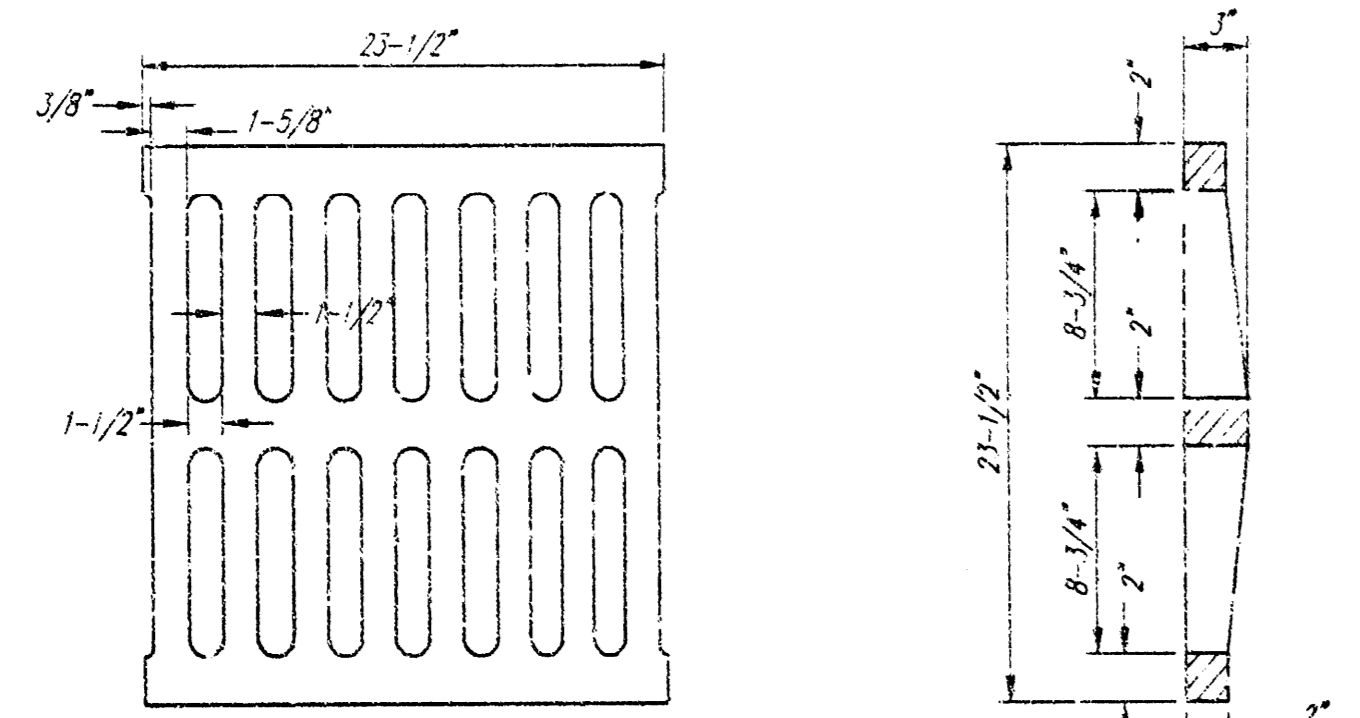
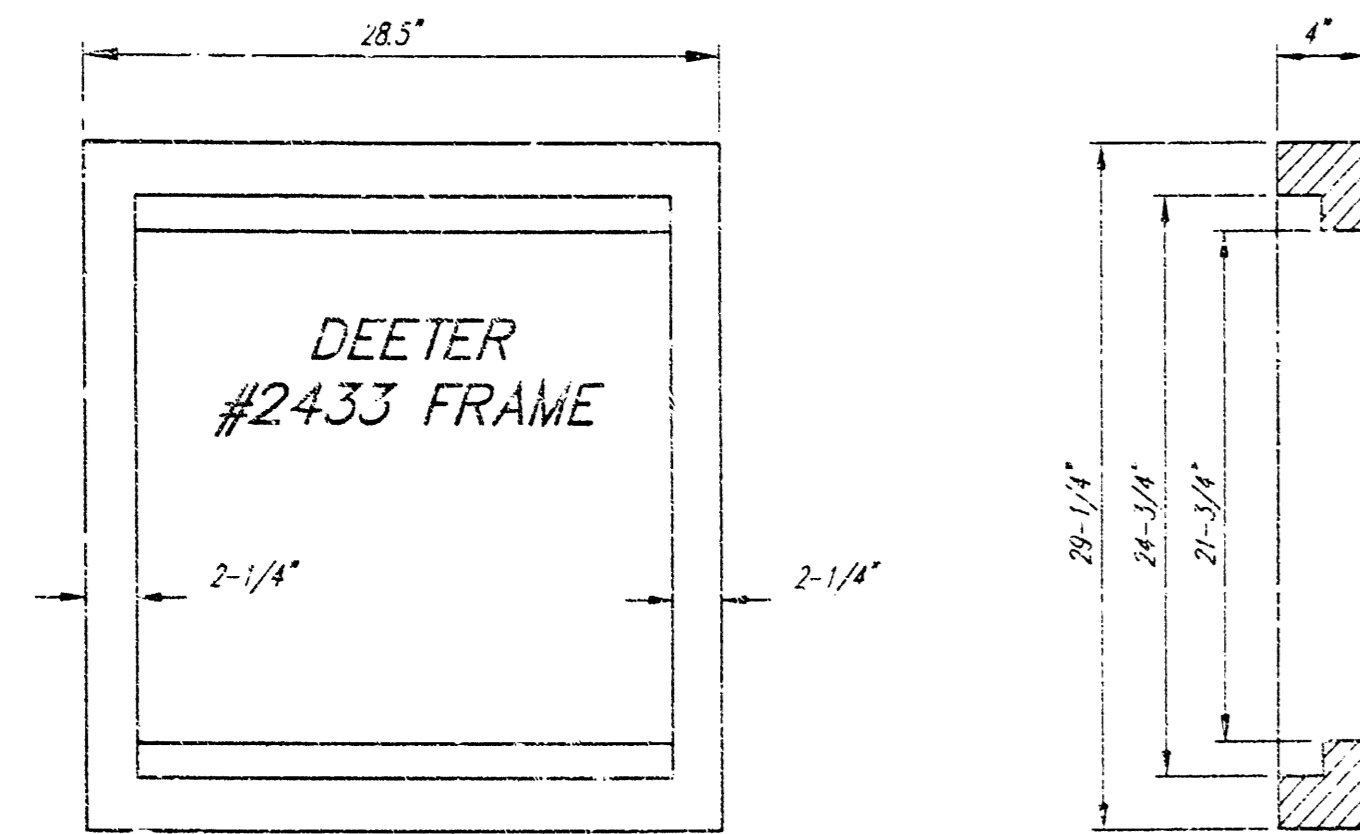
STORM WATER SERVICE
VILLAGE CHARTER END ADDITION
CITY OF WICHITA

BAUGHMAN COMPANY P.A.
ENGINEERING, SURVEYING, & PLANNING

PROJECT NUMBER: 970 PPS (607561)

DESIGN: NEW	DRAWN: SCZ	APPROVED: NEW	DATE: 12/03	SCALE: 1"=20'
-------------	------------	---------------	-------------	---------------

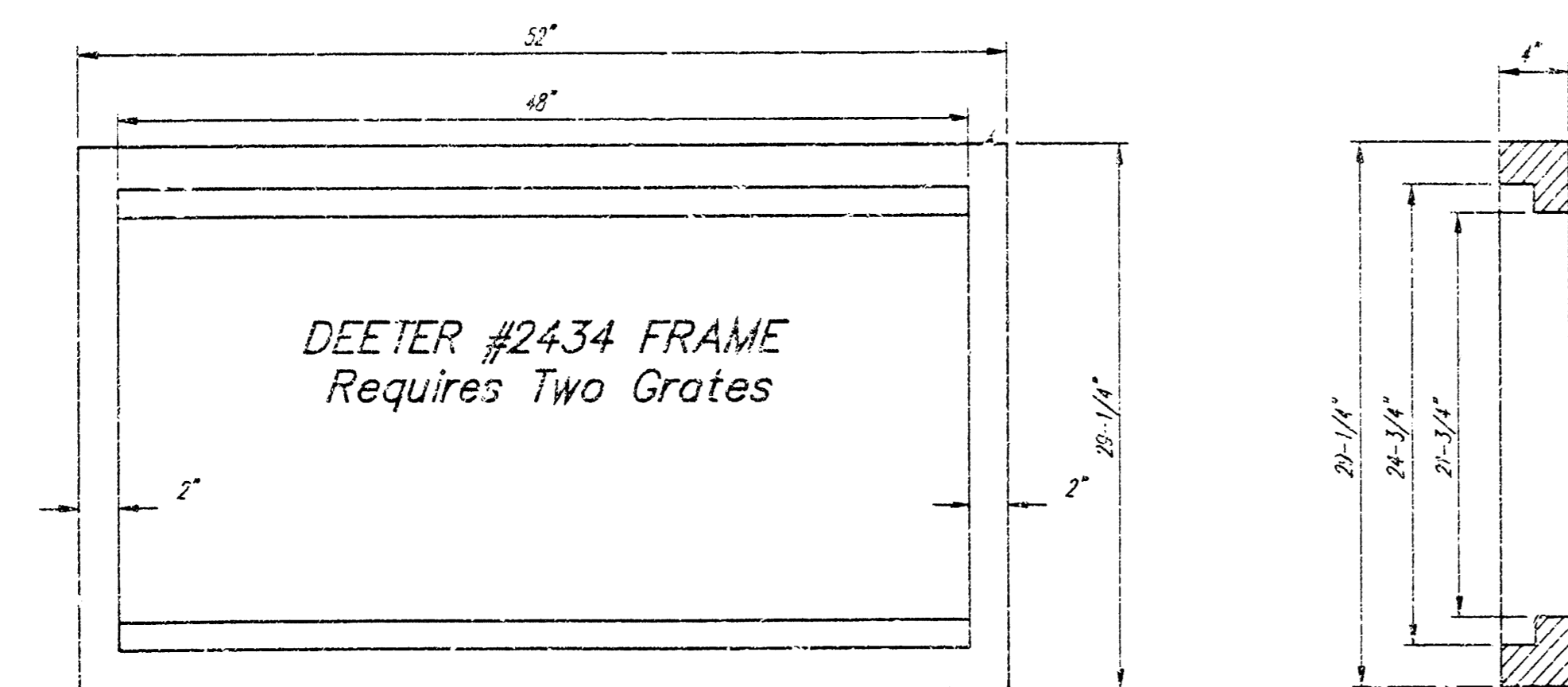
SHEET 6 OF 6



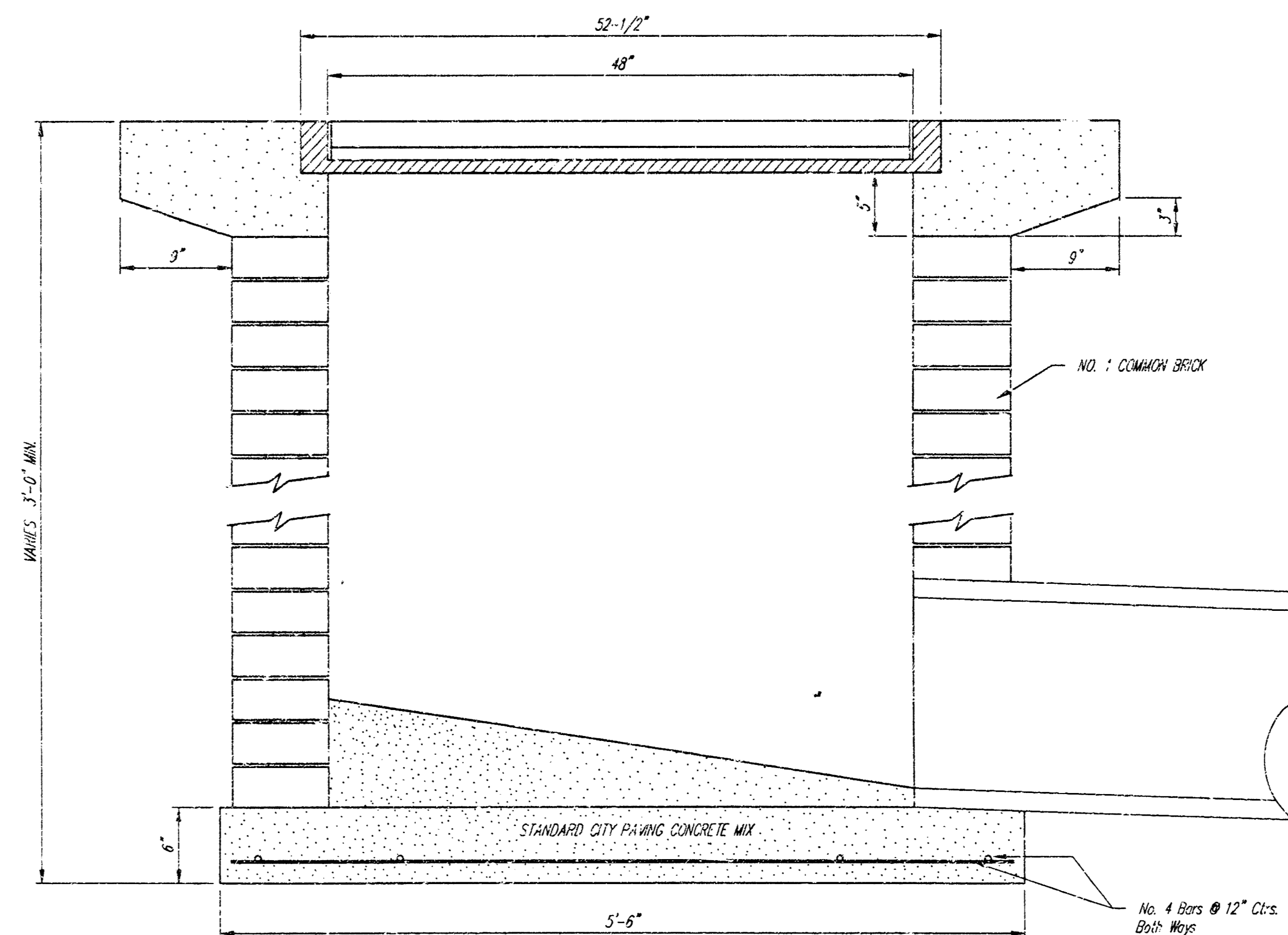
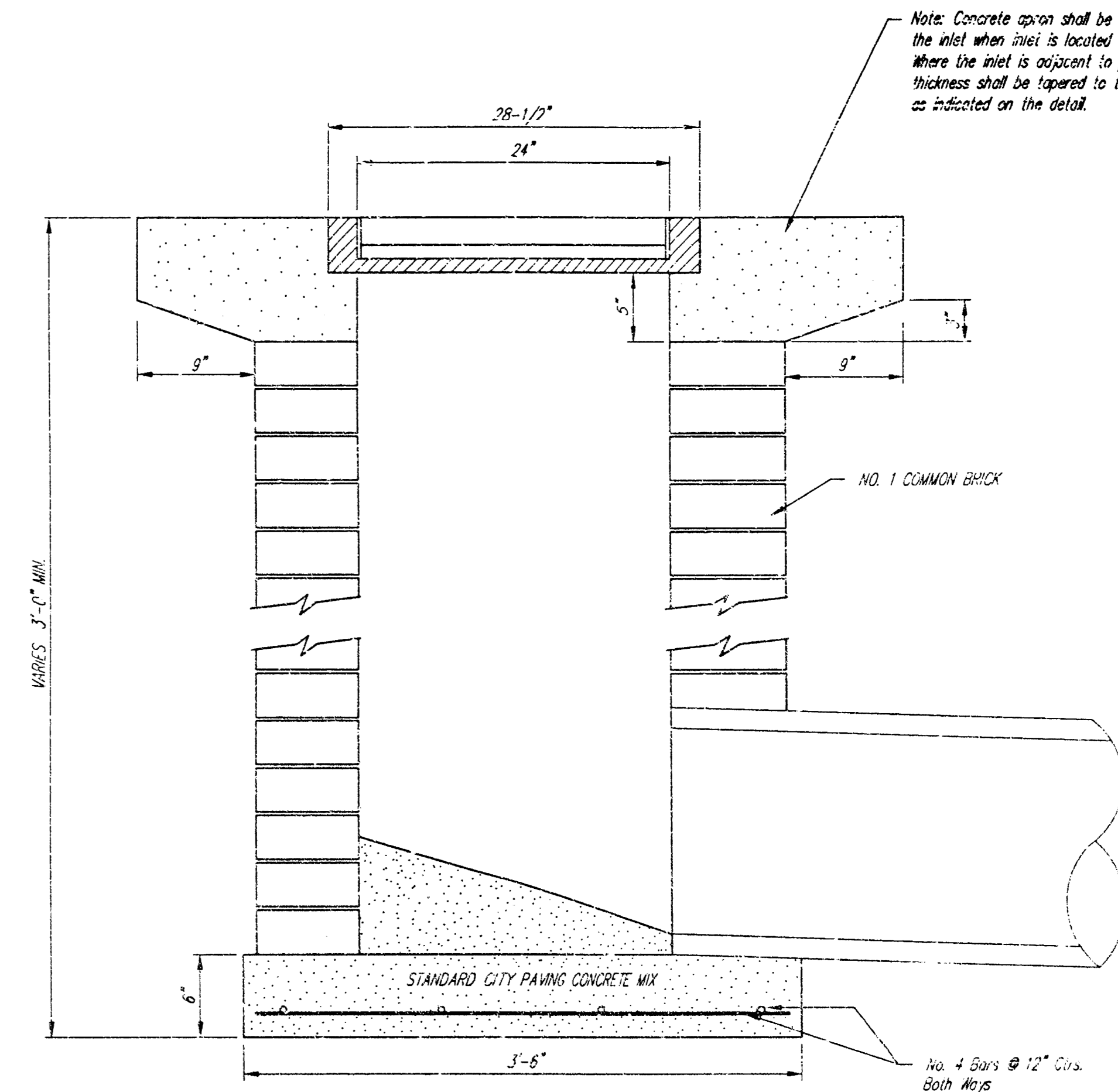
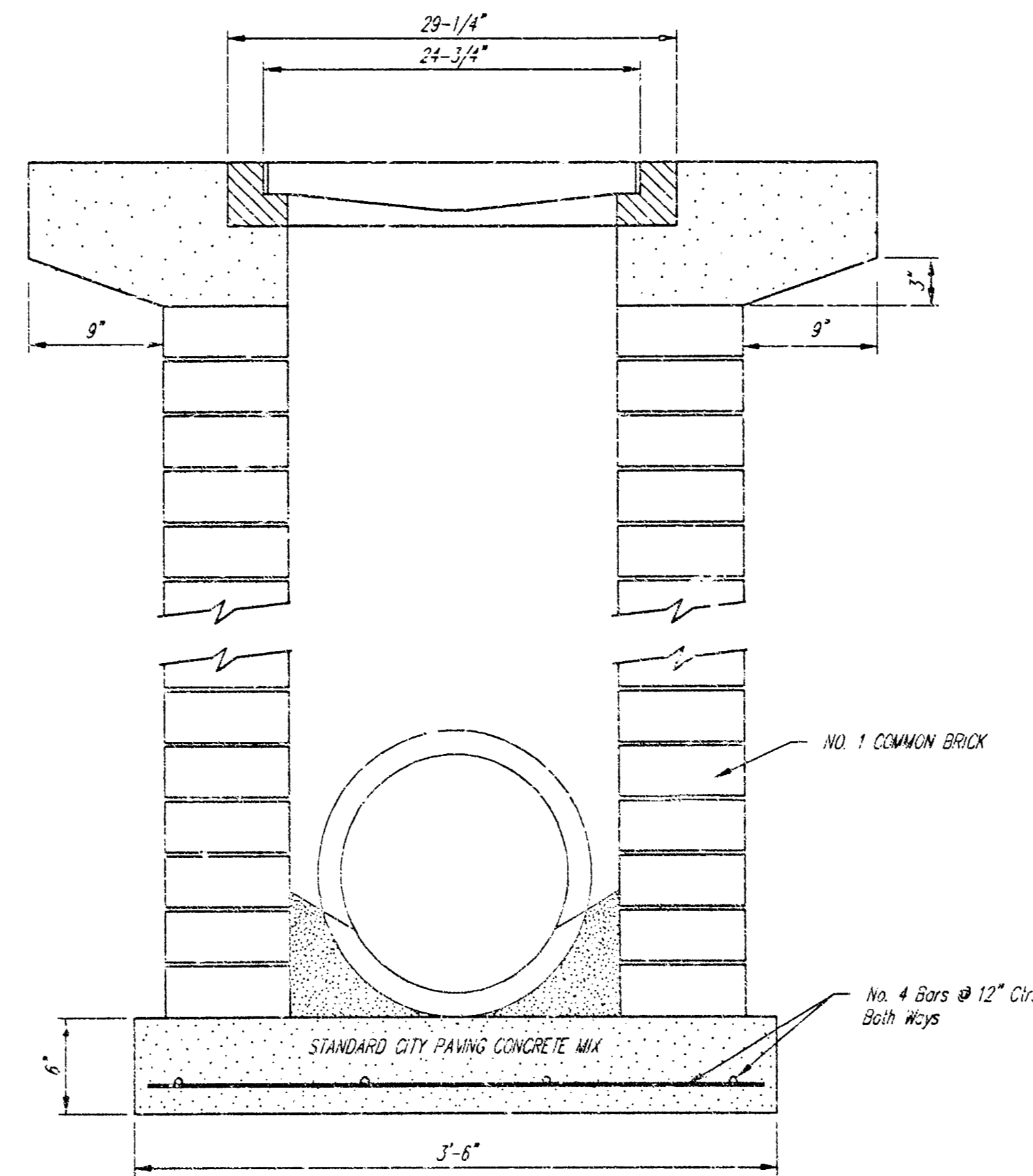
DEETER #2433 GRATE

24" x 24" Frame and Grate Detail

NOTE: Gr. No. shall be imprinted on the top surface with "CITY OF WICHITA" using letters at least 1" in height. Other marking methods may be approved by the engineer.



Double 24" x 24" Frame Detail



City of Wichita Standard
Drop Inlet

BAUGHMAN COMPANY P.A.
ENGINEERING, SURVEYING, & PLANNING
316-282-2271 • 315 ELLIS • WICHITA, KANSAS 67211

PROJECT NUMBER
970 P-1-S (807881)

DESIGN C.O.W.	DRAWN Staff	APPROVED	DATE 12/99	SCALE NONE
------------------	----------------	----------	---------------	---------------

SHEET
4
OF
6

