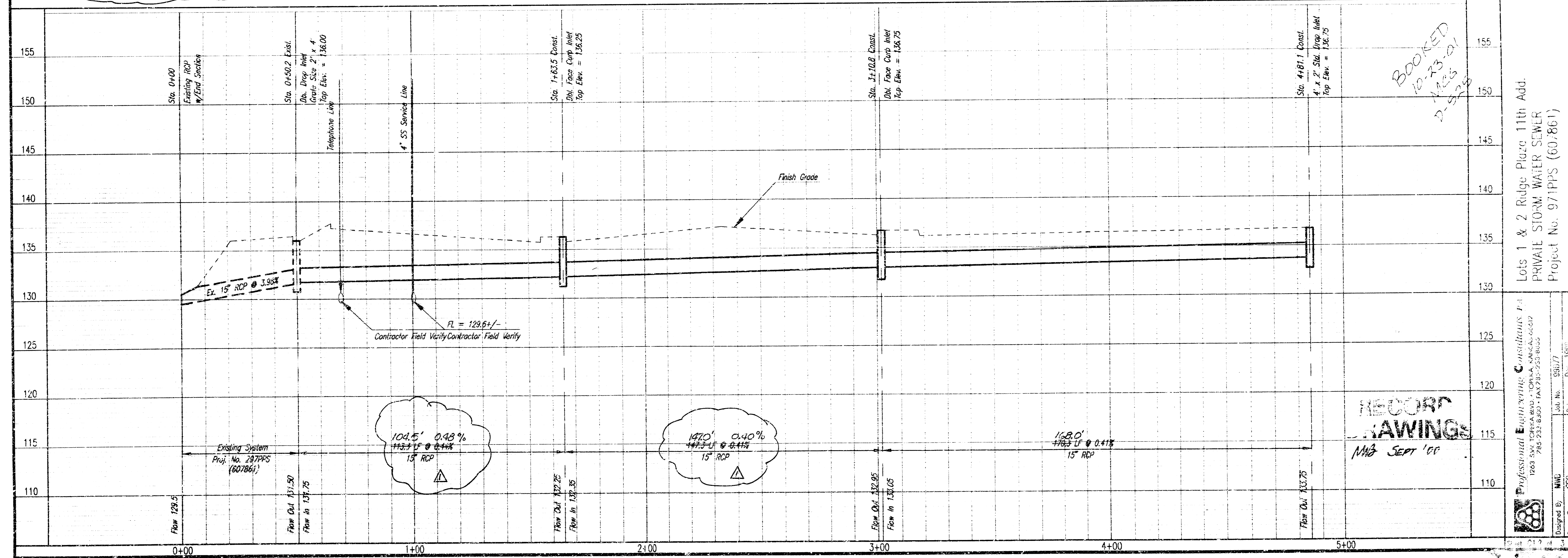
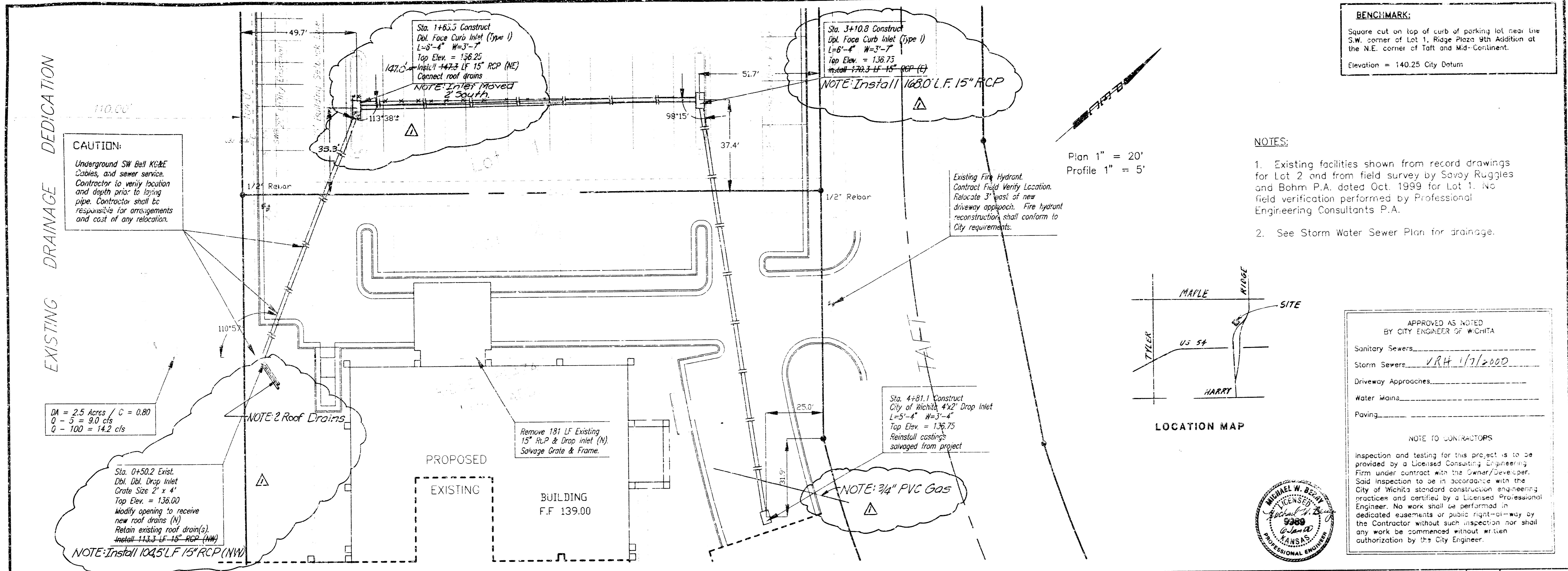


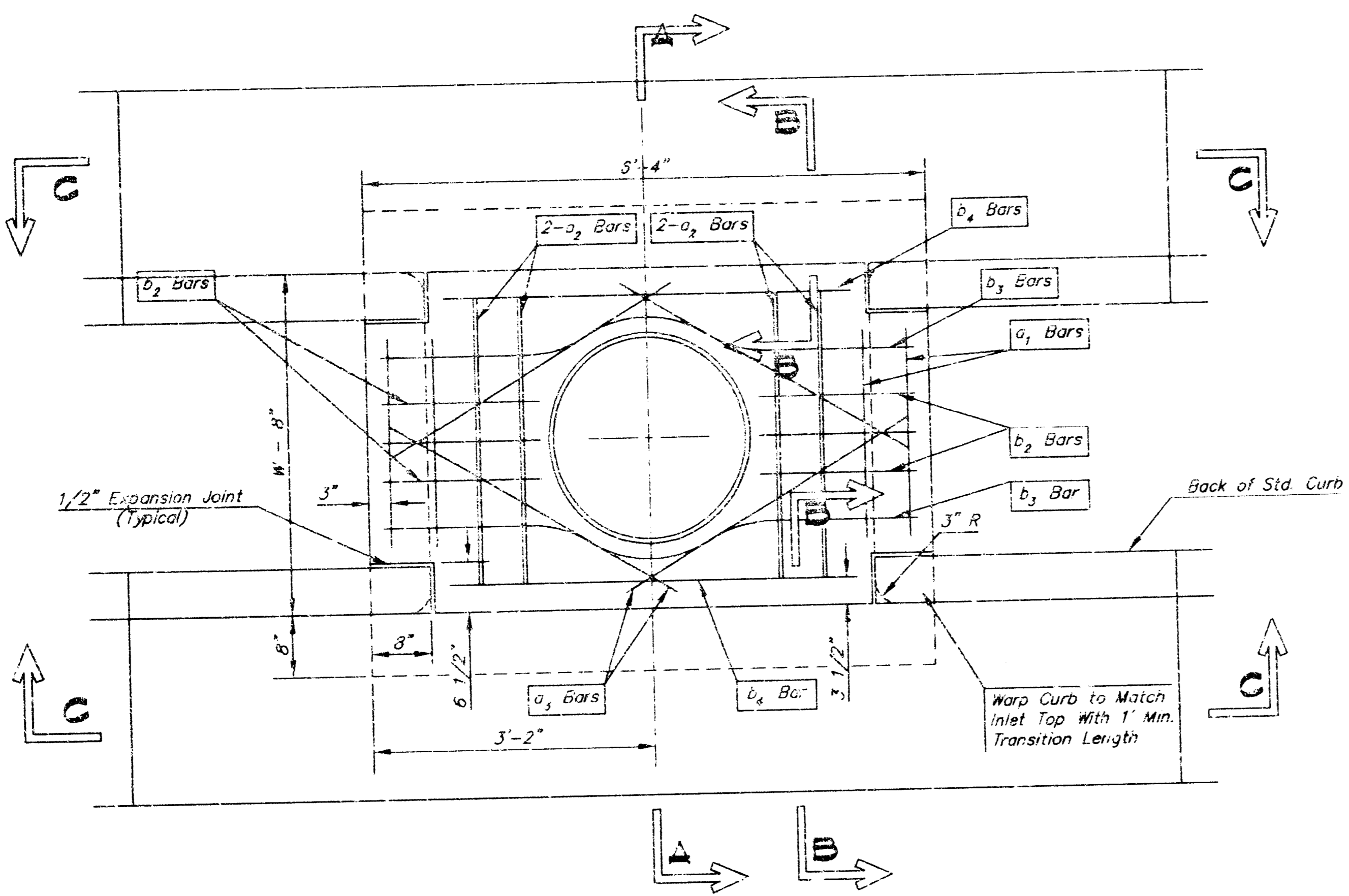
F:\1998\98077\dwg\plan\plan01.dwg Thu Jun 05 12:05:43 2000 SSC_14



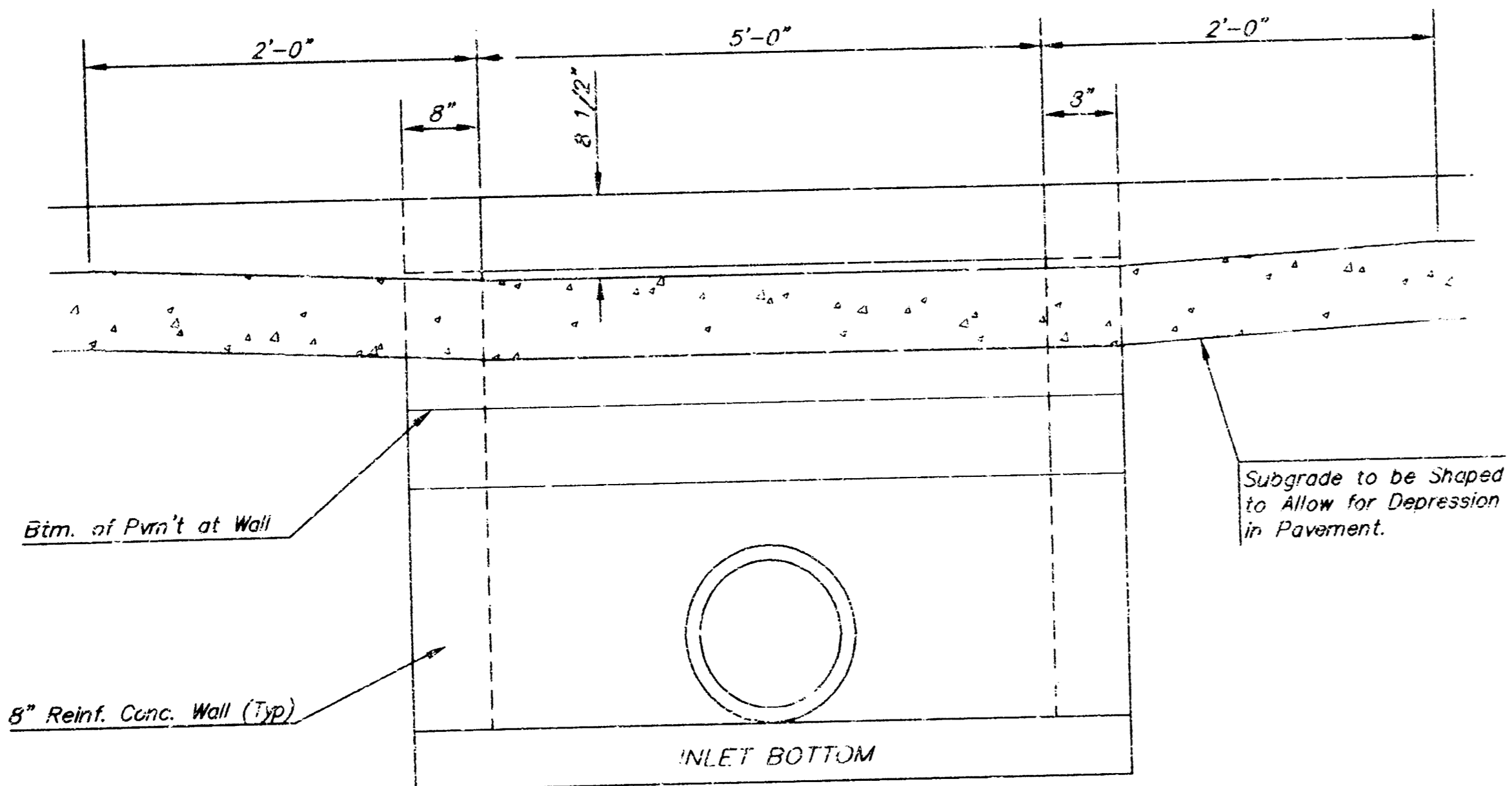
Lots 1 & 2 Ridge Plaza 11th Add.
PRIVATE STORM WATER SEWER
Project No. 971PPS (607861)

Notes:

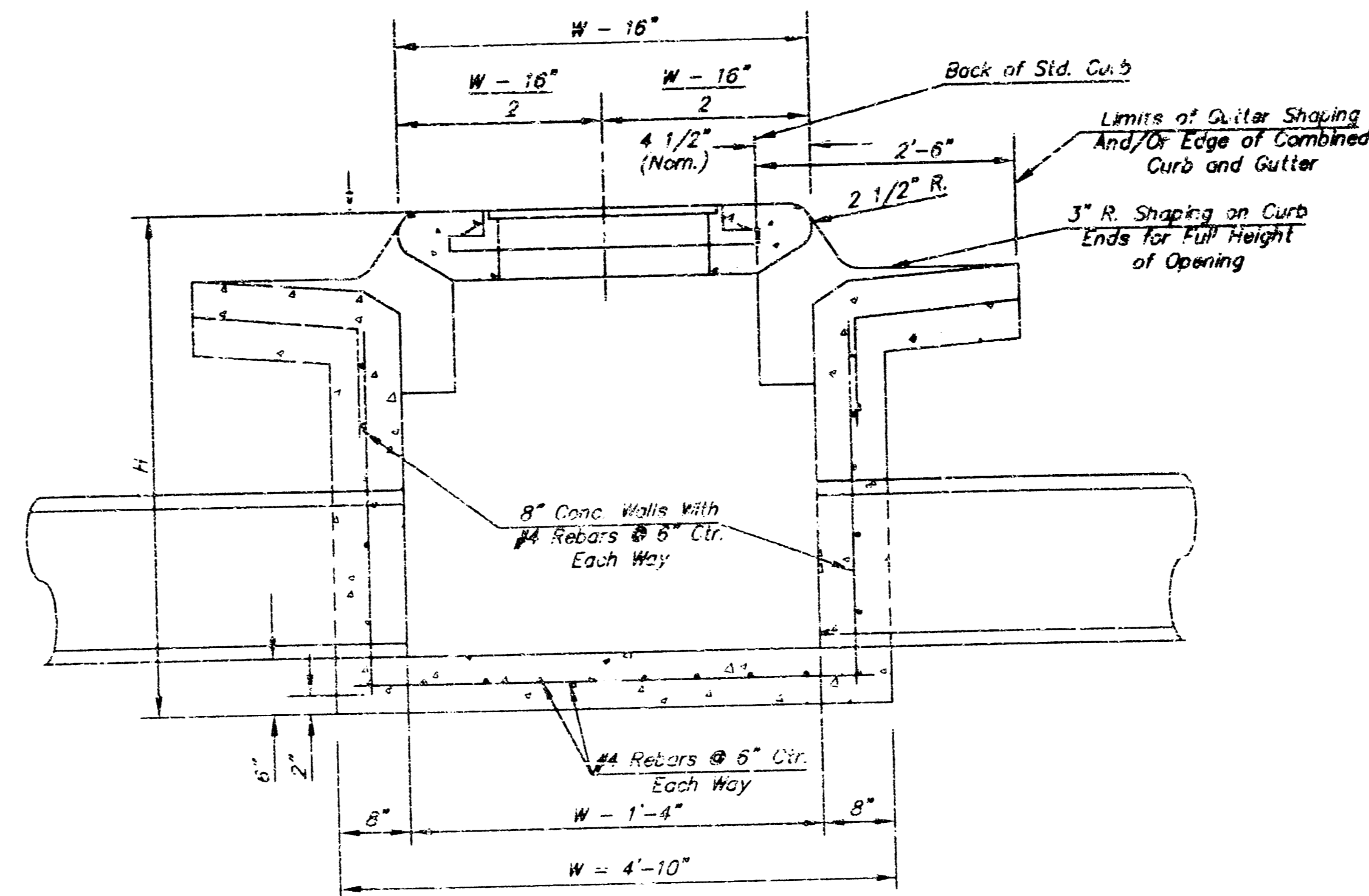
1. Inlet Top Reinforcing shall be Spaced at 6" Max Centers. Inlet Lids shall be Notched out as Indicated to Facilitate Construction of Curb.
2. b_3 Bar to be Field Bent to Clear Inlet Frame.



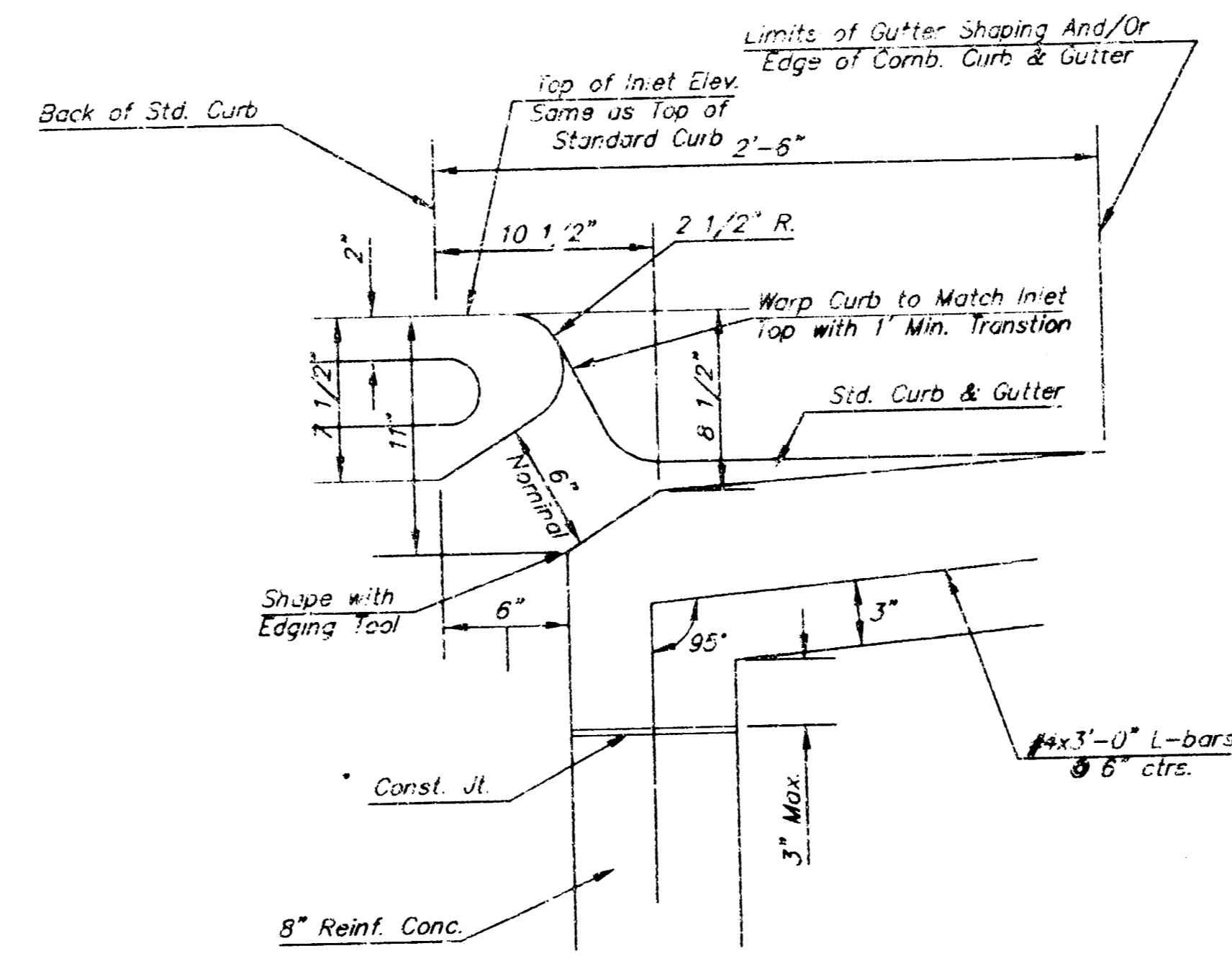
PLAN



SECTION C-C



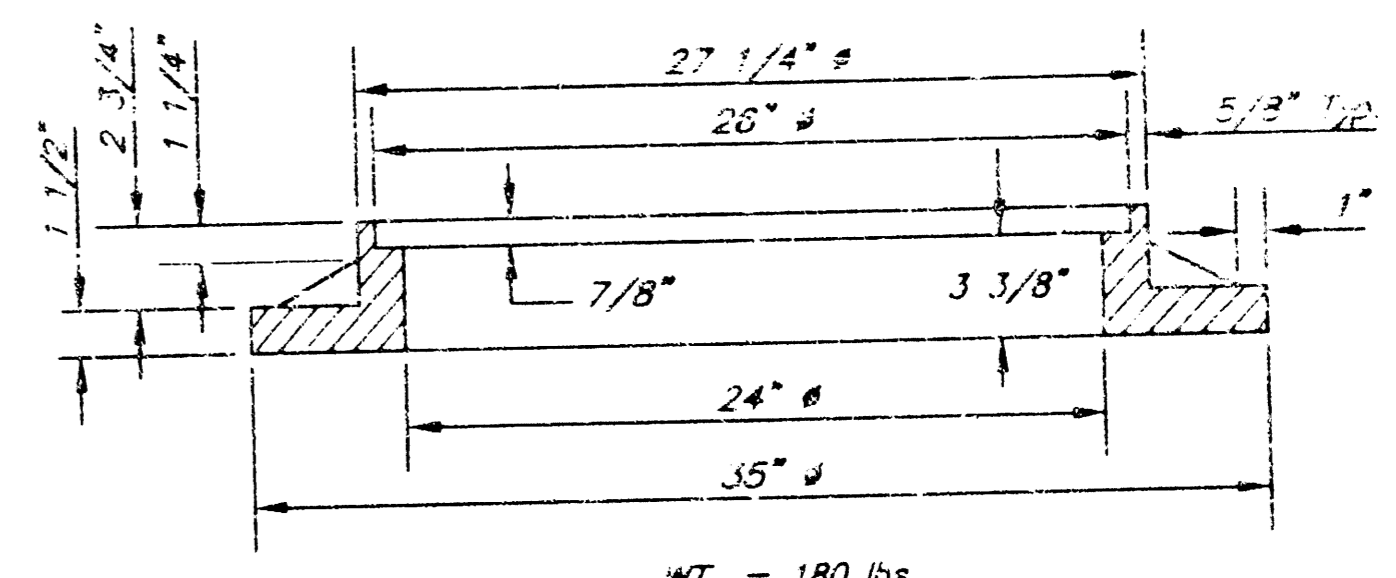
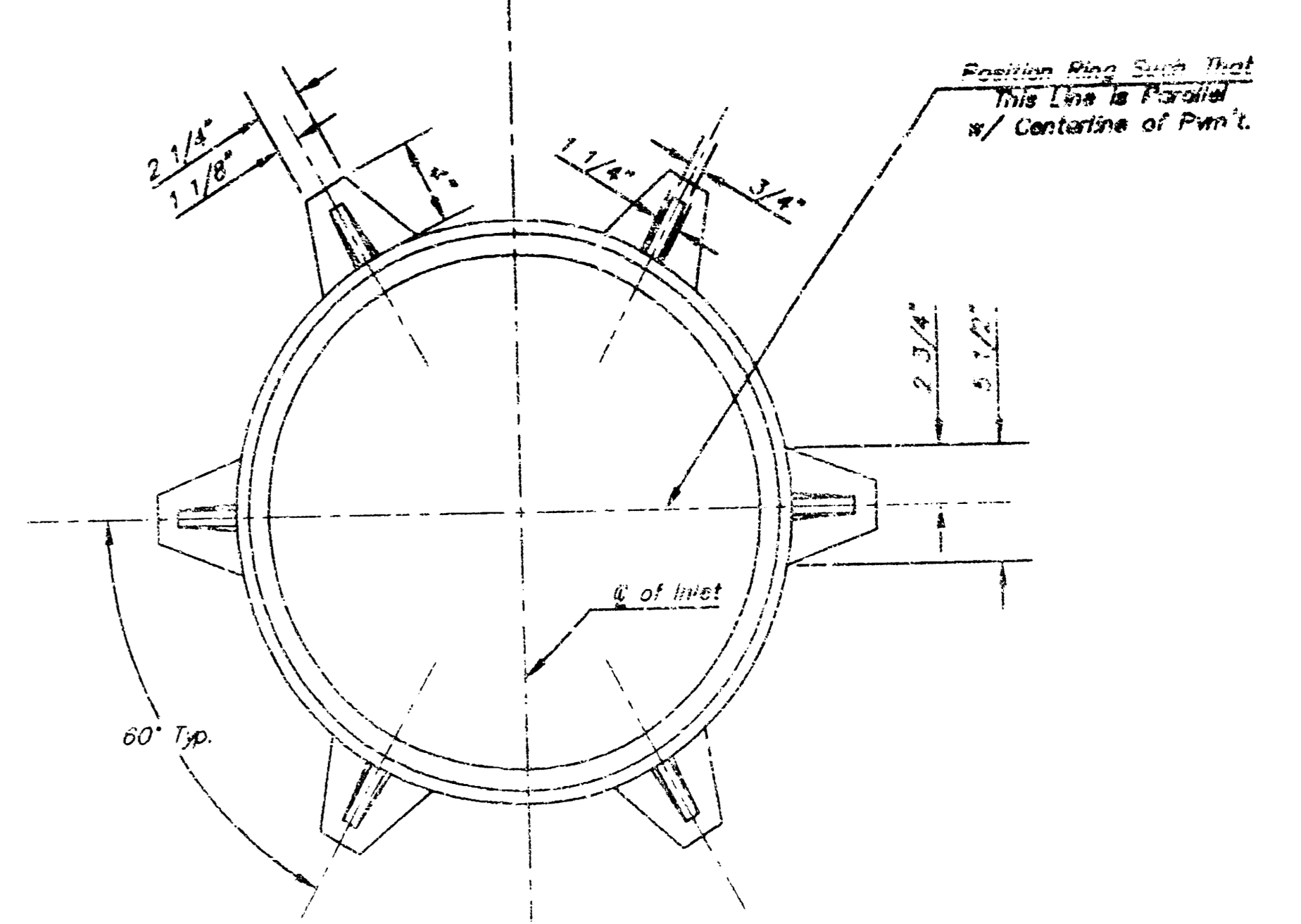
SECTION A-A



SECTION B-B

GENERAL NOTES

1. Concrete tops shall be cast in place. Concrete used for inlet construction shall be concrete pavement mix.
2. Walls shall be cast in place throughout. No brick option permitted.
3. Inlet invert shall be shaped with 8 sack sand mix concrete to create flow channels and to increase hydraulic efficiency such that the inlet will be self cleaning between an inlet and/or outlet pipes.
4. Then ends of all pipes installed in inlets shall be cut off flush with the inside face of the inlet wall.



MANHOLE RING AND COVER

*See City of Wichita Standard Manhole Ring and Cover Detail Sheet for Cover Details to Be Used With Inlet Frame.

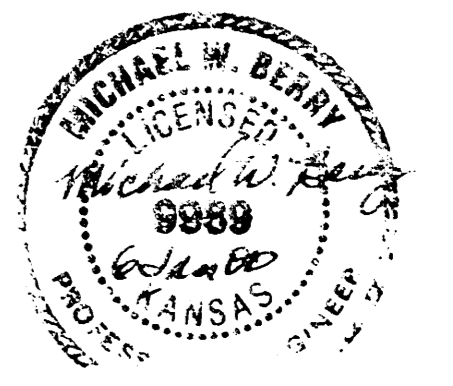
BENDING DIAGRAM

Place a_1 bars back to back with opposite open ends.

DRAWING MODIFIED FROM CITY OF WICHITA TYPE I CURB INLET

RECORDED & INDEXED
MAY SEPT 1999

Professional Engineering Consultants, P.A.
1263 SWY. TORREY BLVD. • TOPEKA, KANSAS 66612
785-233-8800 • FAX 785-233-8855



DBL FACE TYPE 1 CURB INLET
OPNG = 2 @ 6"x5'-0"

PROJECT NUMBER 971PPS	EGG# CODE 607661
DATE DEC 99	Sh C1.3 of 3

18 02 04 02