

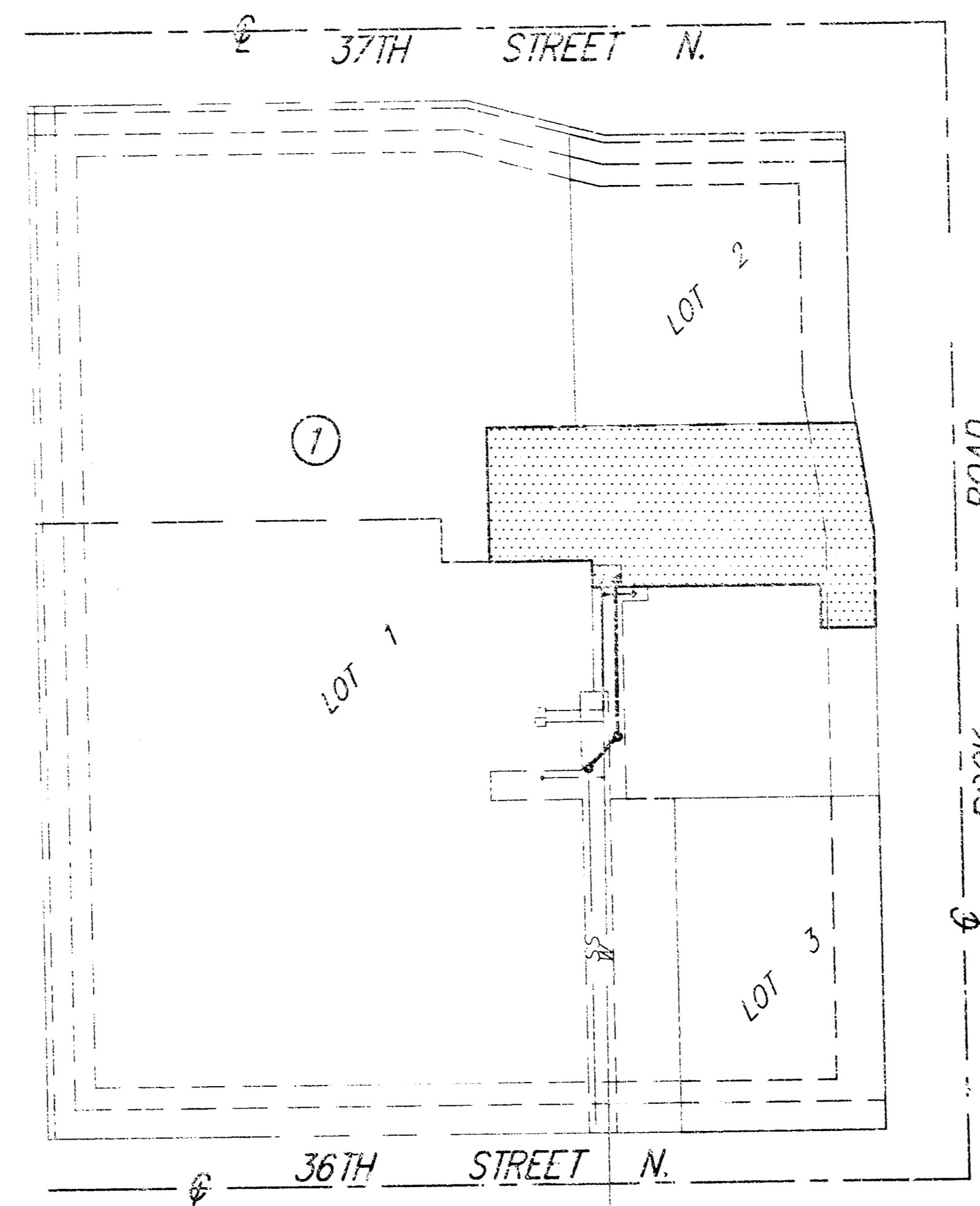
PRIVATE STORM SEWER SYSTEM

TO SERVE PART OF LOT 1, BLOCK 1, KILLARNEY PLAZA 1ST ADDITION

PRIVATE PROJECT NO. 984PPS OCA#607861

GENERAL NOTES

1. Contractor will be required to notify Kansas One-Call (687-2470), a minimum of 48 hours in advance of beginning any excavation.
2. The Contractor shall give all property owners and/or tenants of developed property directly abutting the construction of this project a minimum of ten (10) days advance notice prior to start of construction.
3. The Contractor shall be responsible for preserving property irons. The Contractor will be required to re-establish any property irons which are damaged or destroyed by his construction operations. Such irons shall be re-established by a licensed land surveyor in accordance with state laws.
4. This project is to be constructed in accordance with City of Wichita Standard Specifications for the Construction and of the Policy on Construction of Public Works Projects by Private Contract.
5. Traffic will not be affected by construction of this project.
6. The Contractor is responsible for seeding and/or sodding any and all disturbed areas on the site.



SERVICE AREA

APPROVED AS NOTED
BY THE CITY ENGINEER OF WICHITA

Sanitary Sewers _____
 Storm Sewers VRH 3/10/00
 Driveway Approaches _____
 Water Mains _____
 Paving _____

NOTE TO CONTRACTOR

INSPECTION AND TESTING FOR THIS PROJECT IS TO BE PROVIDED BY A LICENSED CONSULTING ENGINEERING FIRM UNDER CONTRACT WITH THE OWNER/DEVELOPER. SAID INSPECTION TO BE IN ACCORDANCE WITH THE CITY OF WICHITA STANDARD CONSTRUCTION ENGINEERING PRACTICES AND CERTIFIED BY A LICENSED PROFESSIONAL ENGINEER. NO WORK SHALL BE PERFORMED IN DEDICATED EASEMENTS OR THE PUBLIC RIGHT OF WAY BY THE CONTRACTOR WITHOUT SUCH INSPECTION NOR SHALL ANY WORK BE COMMENCED IN DEDICATED EASEMENTS OR PUBLIC RIGHT-OF-WAY WITHOUT WRITTEN AUTHORIZATION BY THE CITY ENGINEER.

CITY OF WICHITA, KANSAS
MICHAEL E. LINDEBAK, P.E. - CITY ENGINEER

BENCH MARK

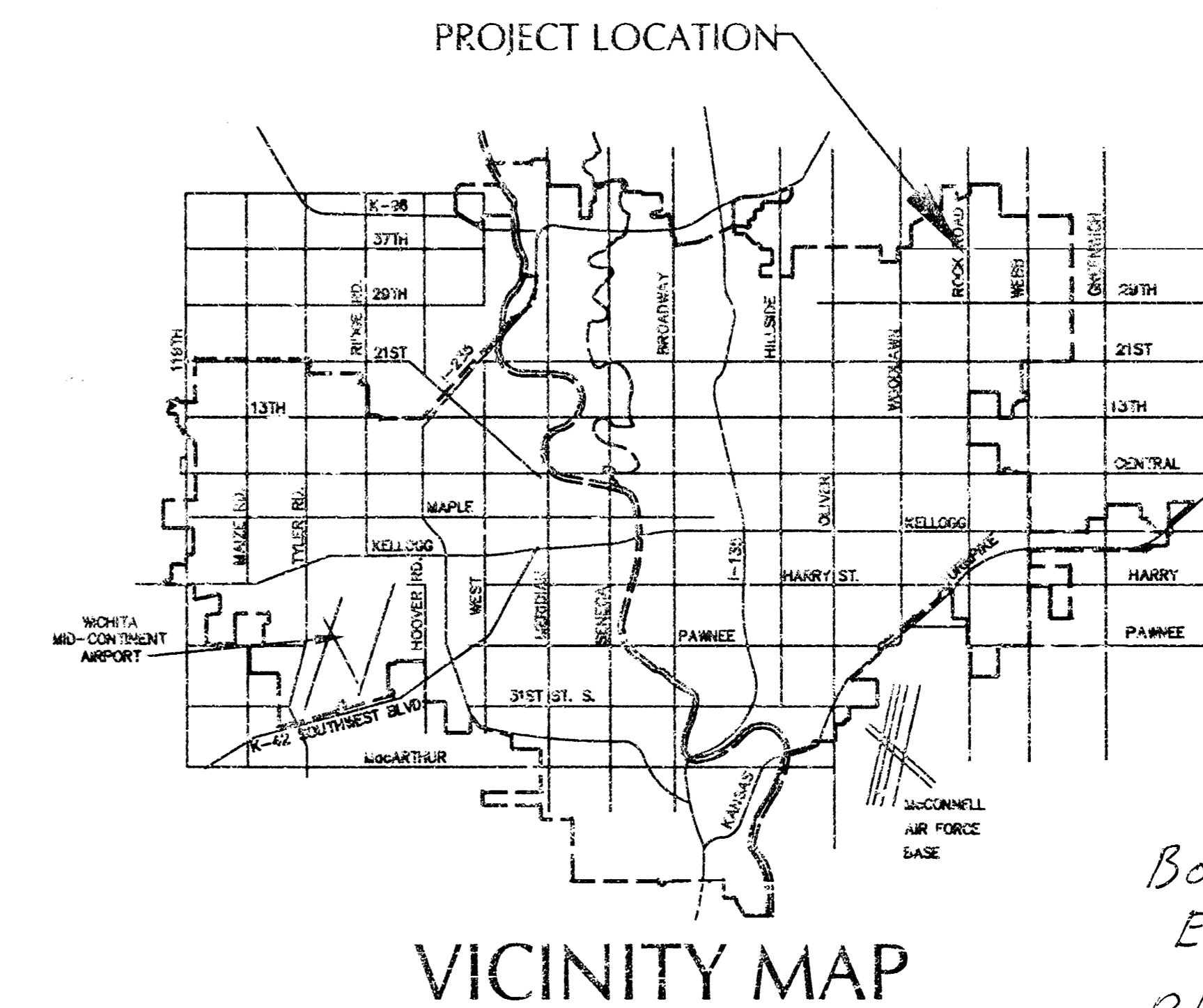
BM #1: City of Wichita Std. Disk at NW Corner Concrete Field Drain, 150'± E. of the E.L. of Rock Road and 8' S. of S.L. 37th Street North. Elev. 203.87

BM #2: "+" Cut in T.C. 10' E. of 2nd Light Pole E. of W.L. Tract 2, N. of Northrock Suites Hotel. Elev. 198.24

BM #3: "+" Cut at S.E. Corner of Lot 3, Block 1, Killarney Plaza First Addition. Elev. 200.24

INDEX OF SHEETS

1. TITLE SHEET
2. PLAN - PROFILE
3. SHALLOW MANHOLE DETAILS



VICINITY MAP

*Booked
E-4
8/19/03
RDL*

9-BAY IN LINE BUILDING
 FACADE TOWER
 3745 NORTH ROCK ROAD
 WICHITA, KANSAS 67226
 TITLE SHEET



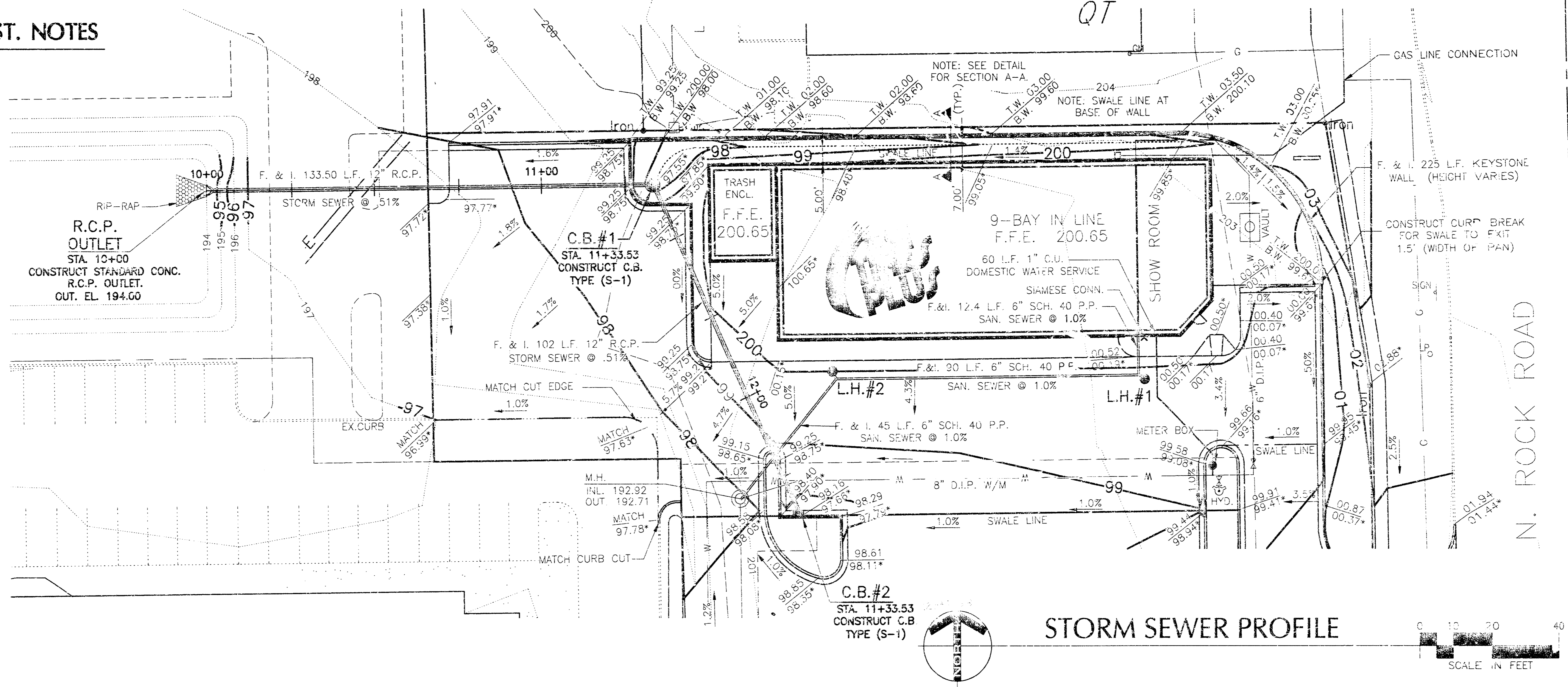
PROJECT NUMBER	984PPS
COMPUTER FILE	6320577.E.DWG
DATE	03/08/00
DRAWN BY	M.S.F.
CHECKED BY	RDL
REVISIONS	
SHEET NUMBER	

STORM SEWER CONST. NOTES

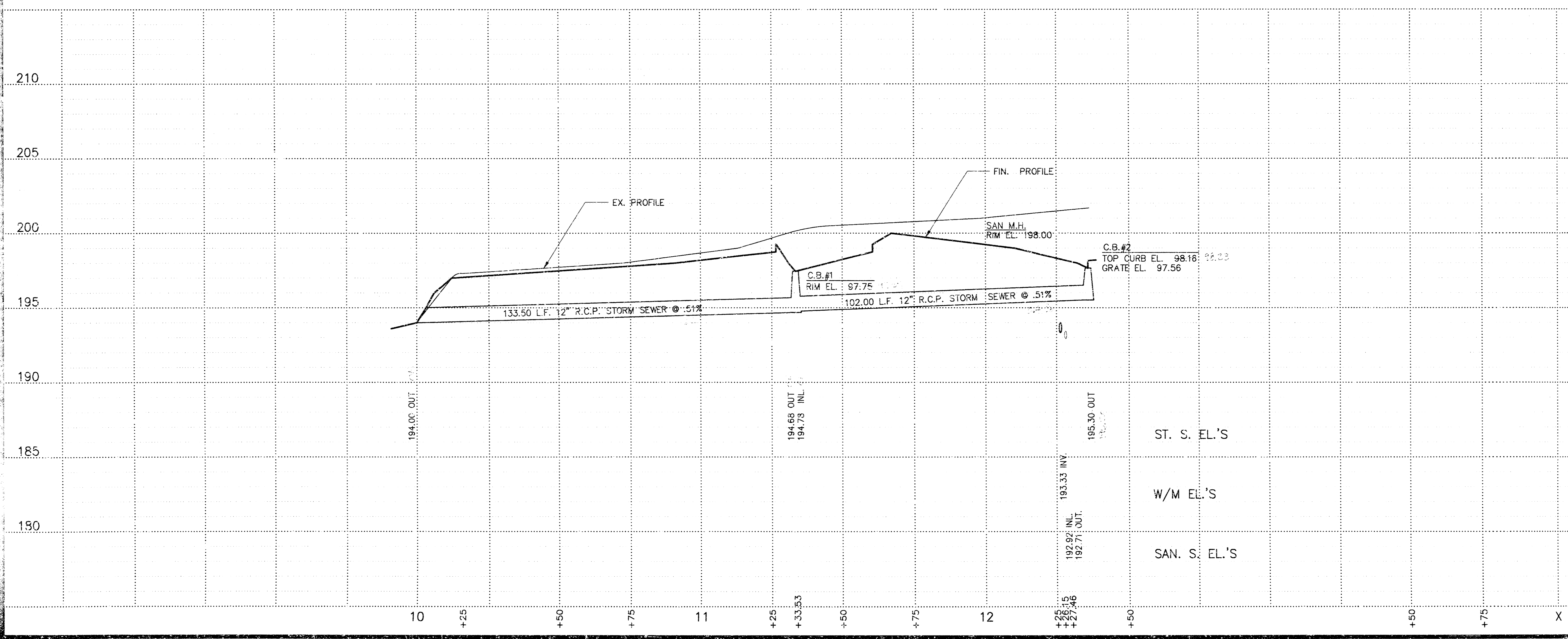
OUTLET APRON
ATTACH CONC. APRON & RIP RAP AS PER DETAIL
OUTLET EL. 94.00 TO POND

C.B. #1
CONSTRUCT CATCH BASIN TYPE "S-1"
AS PER DETAIL
RIM EL. 97.55
INLET EL. 94.78 FROM C.B. #2
INLET EL. 96.78 FROM TRENCH DRAIN
OUTLET EL. 94.68 TO DRAINAGE DITCH
F. & I. 133.50 L.F. 12" R.C.P. AT .51%
(LENGTH INCLUDES STANDARD APRON)

C.B. #2
CONSTRUCT CATCH BASIN TYPE "A"
AS PER DETAIL
TOP CURB EL. 98.16
GRATE EL. 97.56
OUTLET EL. 95.30 TO C.B. #1
F. & I. 102 L.F. 12" R.C.P. AT .51%



STORM SEWER PROFILE



**ENGINEERS • ARCHITECTS
SURVEYORS • PLANNERS
LANDSCAPE ARCHITECTS**

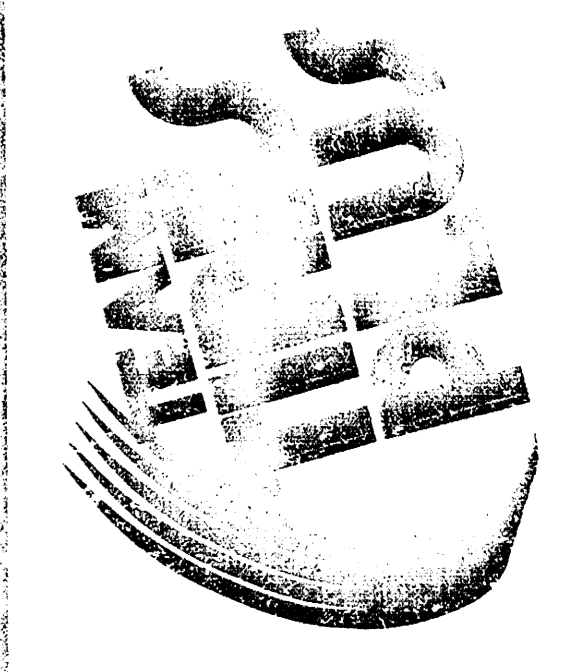
717 THIRD AVENUE SOUTHEAST
ROCHESTER, MINNESOTA 55904
PHONE: (612) 286-0000
FAX: (612) 286-0000

I HEREBY CERTIFY THAT THIS PLAN, SPECIFICATION OR REPORT WAS PREPARED BY ME OR UNDER MY DIRECT SUPERVISION AND THAT I AM A LEGALLY REGISTERED PROFESSIONAL ENGINEER UNDER THE LAWS OF THE STATE OF KANSAS.

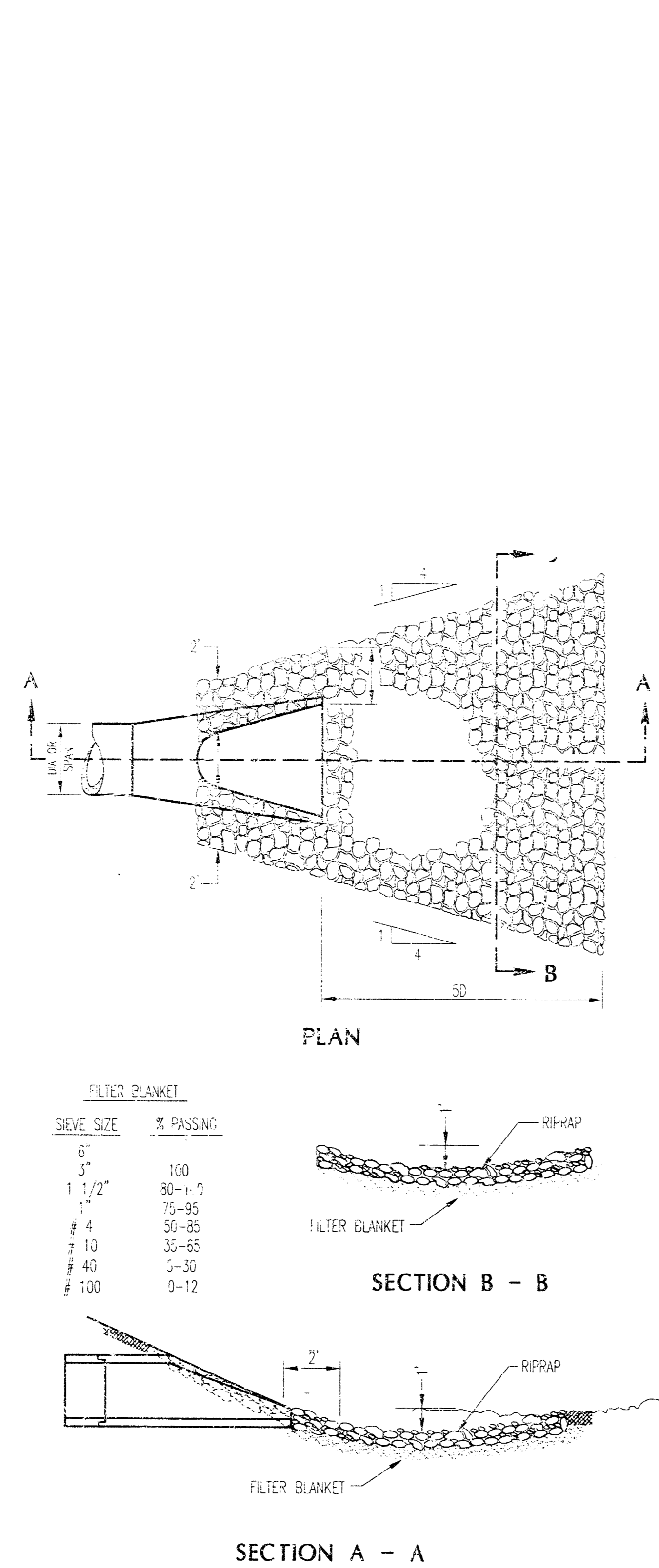
[Signature]
12/22/00 3/18/00

9-BAY IN LINE BUILDING
FACADE TOWER
3745 NORTH ROCK ROAD
WICHITA, KANSAS 67226

STORM SEWER PLAN & PROFILE



PROJECT NUMBER	6-570
COMPUTER FILE	6320STORM.DWG
DATE	03/08/00
DRAWN BY	M.S.F.
CHECKED BY	
REVISIONS	
SHEET NUMBER	2

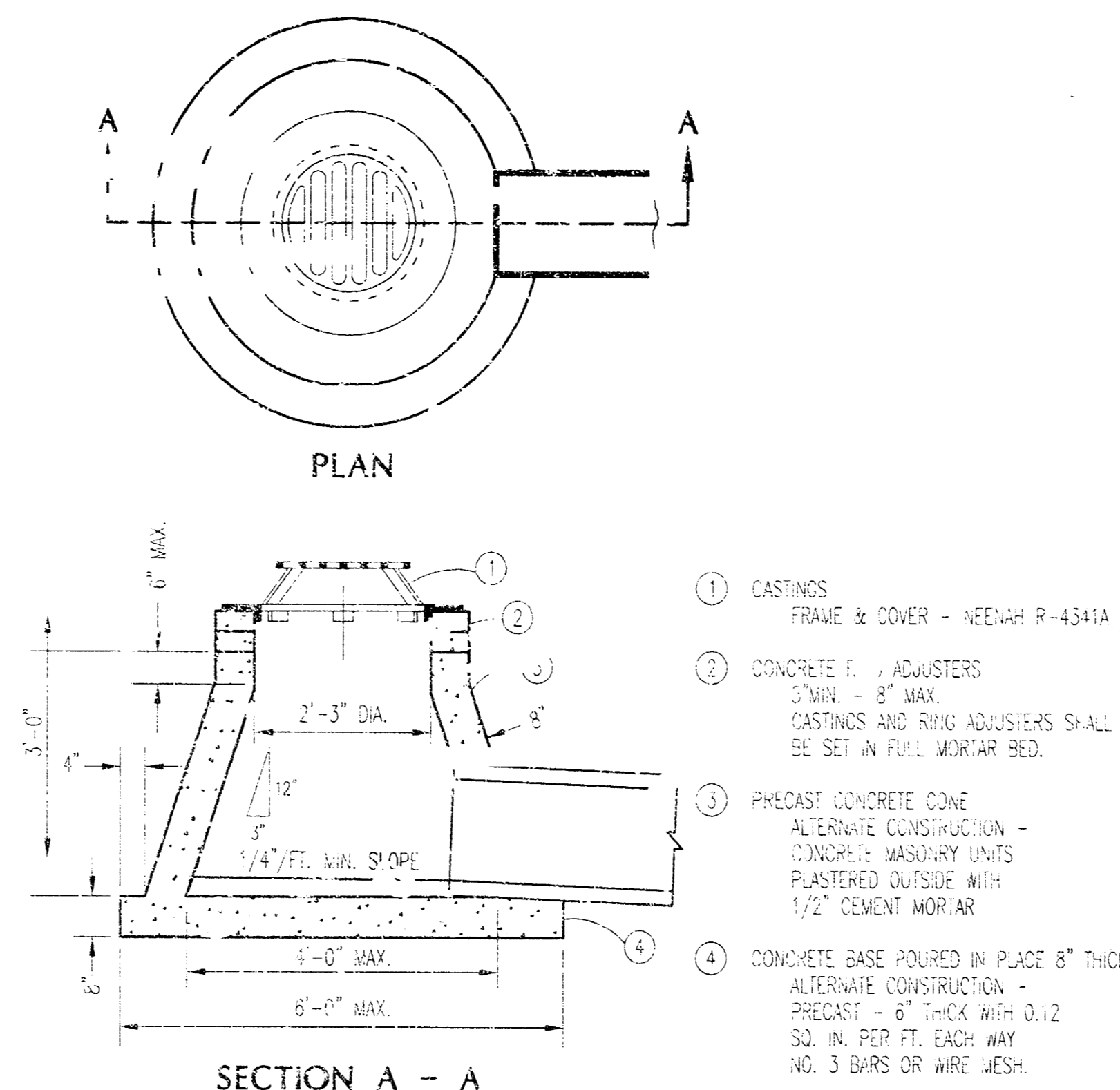
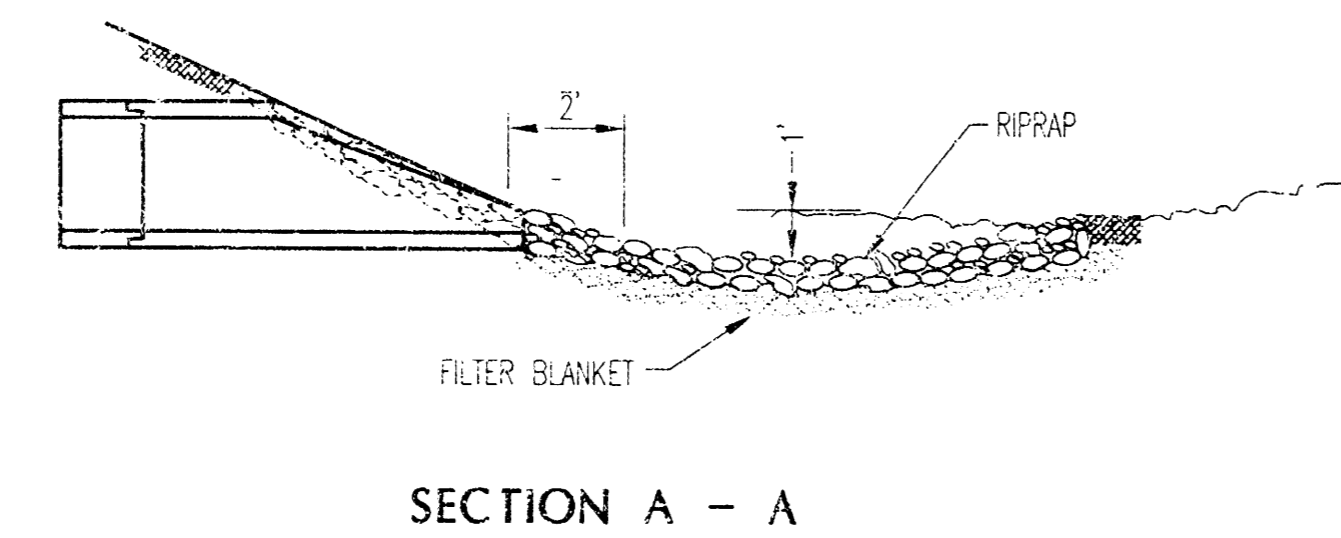
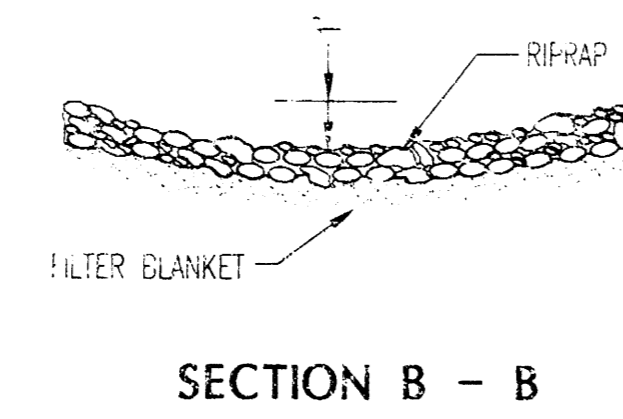


RIP RAP AT R.C.P. OUTLETS

NOT TO SCALE

FILTER BLANKET

SIEVE SIZE	% PASSING
6"	100
3"	75-85
1 1/2"	50-65
1"	35-55
4"	10-30
10"	0-12
40"	
100"	

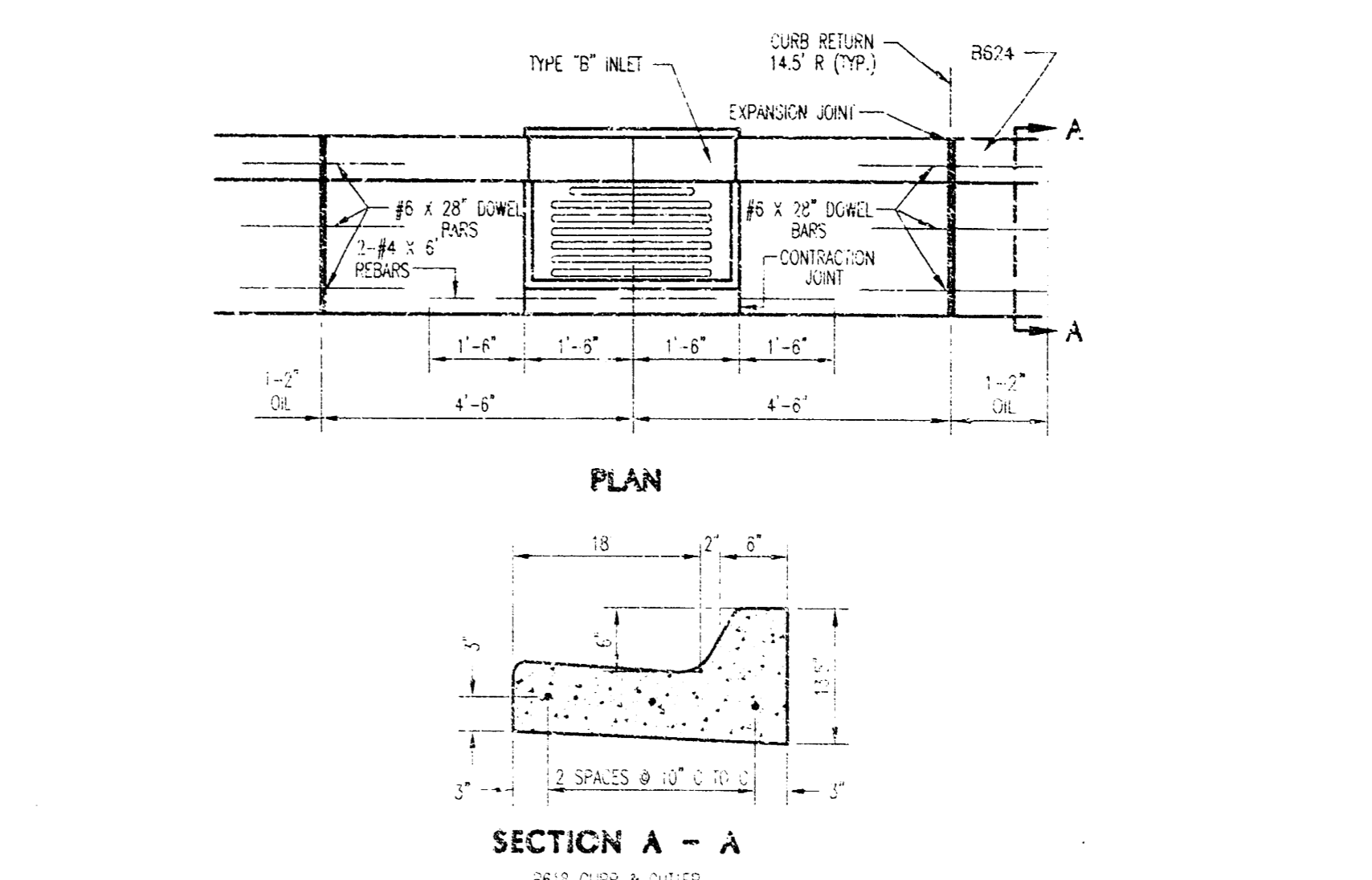


CATCH BASIN DETAIL (TYPE S-1)

NOT TO SCALE

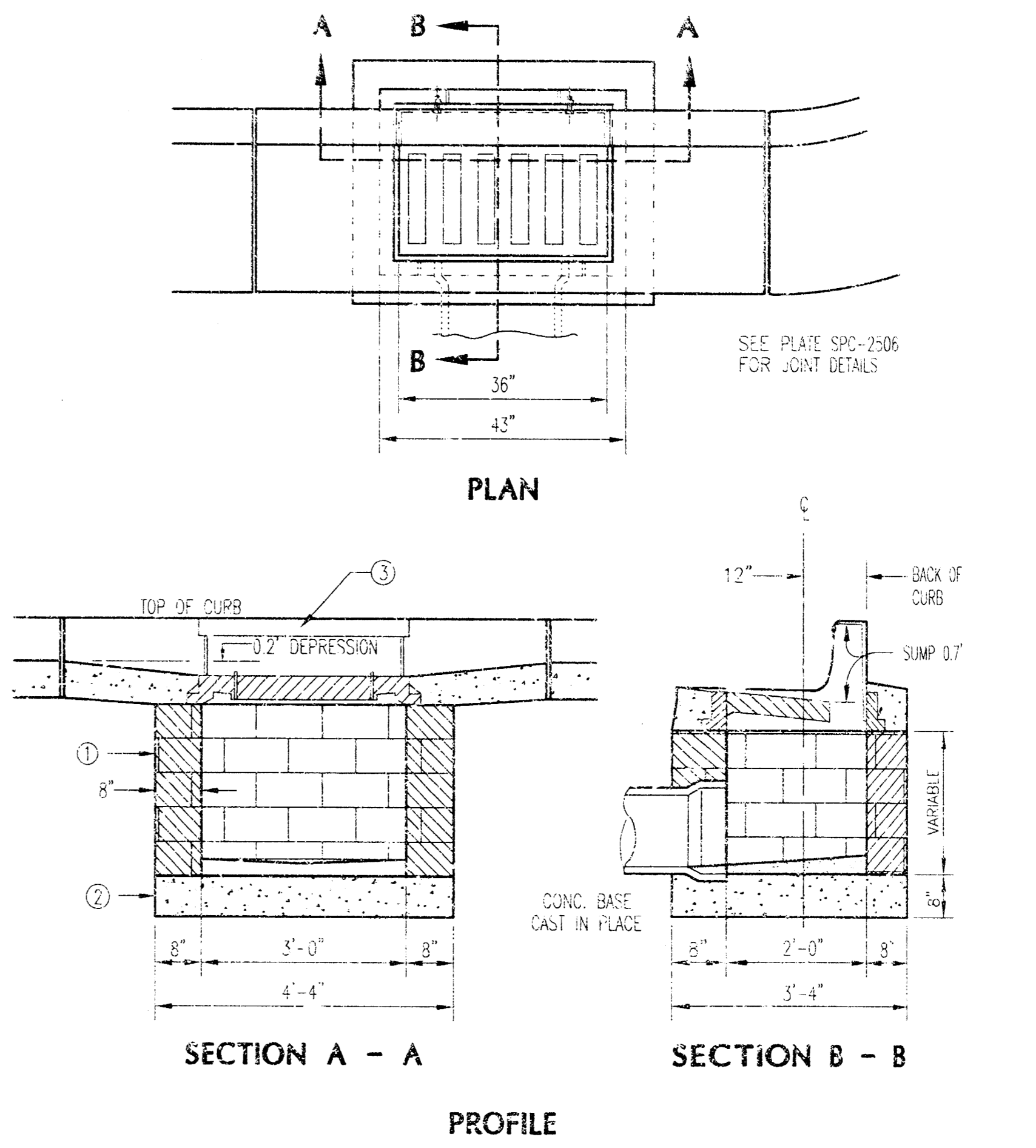
CONSTRUCTION NOTES

- EXISTING UTILITIES AND SERVICE LOCATIONS SHALL BE VERIFIED IN THE FIELD PRIOR TO CONSTRUCTION.
- ARRANGE TEL., GAS AND ELECTRIC SERVICE CONNECTIONS WITH THE RESPECTIVE SERVICE COMPANIES.
- ALL CONSTRUCTION SHALL BE PERFORMED IN ACCORDANCE WITH STATE AND LOCAL STANDARD SPECIFICATIONS FOR CONSTRUCTION.
- GOOD IMPLEMENTATION, CONSISTENT MONITORING, AND THE MAINTENANCE OF ALL EROSION CONTROL MEASURES ARE CRITICAL TO MINIMIZE EROSION ON THIS CONSTRUCTION SITE.
- PUBLIC STREET SWEEPING SHOULD BE DONE AT LEAST ONCE A WEEK OR ONCE A DAY IF NEEDED.
- ALL EROSION AND POLLUTION CONTROL MEASURES SHALL BE IN ACCORDANCE WITH STATE AND LOCAL REQUIREMENTS.
- WATER SERVICE SHALL BE INSTALLED WITH 5' TO 6' OF COVER OVER PIPE.
- CONTRACTOR SHALL COMPLY WITH "BEST MANAGEMENT PRACTICES IN COMPLIANCE" WITH THE CODE OF THE CITY OF WICHITA.
- SEE NOTE ON SUBGRADE PLASTIC MEMBRANE (VISQUENE) AT TOP OF PAGE.
- FIRE LINE, WATER MAIN, AND SANITARY SEWER EXTENSION AS PER OCA #607853 AND OCA #607861.



CURB REINFORCEMENT AT CATCH BASIN

NOT TO SCALE



CATCH BASIN DETAIL (TYPE A)

NOT TO SCALE

ENGINEERS • ARCHITECTS
SURVEYORS • PLANNERS
LANDSCAPE ARCHITECTS

717 THIRD AVENUE, SUITE 1100
ROCHESTER, MINNESOTA 55904
TEL: 763-326-1100
FAX: 763-326-1101
WWW.HOK.COM

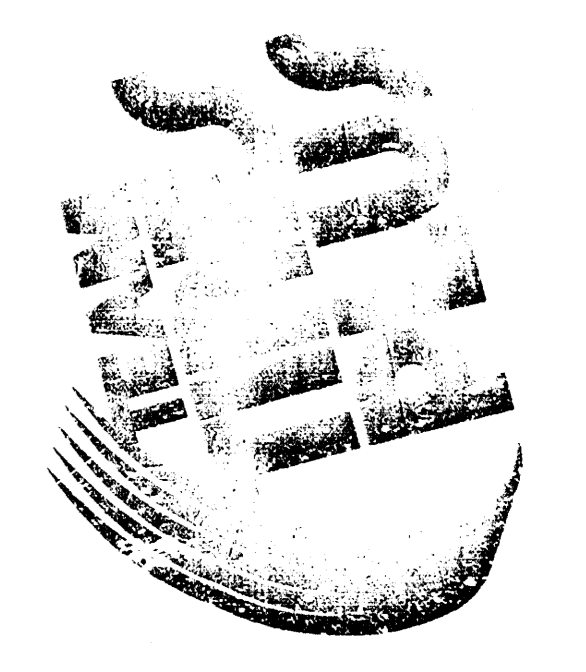
I HEREBY CERTIFY THAT THIS WORK WAS PREPARED BY ME OR UNDER MY DIRECT SUPERVISION AND THAT I AM A DULY REGISTERED PROFESSIONAL ENGINEER UNDER THE LAWS OF THE STATE OF KANSAS.

15/20/03/18/00

9-BAY IN LINE BUILDING
FACADE TOWER

3745 NORTH ROCK ROAD
WICHITA, KANSAS 67226

DETAILS



PROJECT NUMBER: 6320
COMPUTER FILE: 6320DET.DWG
DATE: 03/08/00
DRAWN BY: M.S.F.
CHECKED BY: M.S.R.

REVISIONS

SHEET NUMBER

3
THREE