

STORMWATER SEWER IMPROVEMENTS TO SERVE

THE EARTHGRAINS COMPANY

Project Number
991 PPS (607861)

CITY OF WICHITA, KANSAS
Michael E. Lindebak, P. E., City Engineer

GENERAL NOTES

- Contractor will be required to provide notice to utility companies a minimum of twenty-four (24) hours prior to any excavation, as follows:

| | |
|-----------------|----------|
| Kansas One-Call | 687-2470 |
|-----------------|----------|

The Contractor must notify the following in case of an emergency.

| | |
|-------------------------------------|----------------|
| Cablevision | 267-4270 |
| or | 263-2061 |
| K.P.L. Gas Service Company | 383-8550 |
| Kansas Gas & Electric Company | 335-8500 |
| Peoples Natural Gas | 342-8311 |
| or | 1-800-303-0357 |
| Southwestern Bell Telephone Company | 1-571-7511 |
| City of Wichita Water Department | 268-4908 |
| City of Wichita Sewer Department | 268-4071 |
- Exist. utilities and their locations, as shown on the plans, represent the best information obtainable for design. Location information has been obtained from the various utility companies and is either from company record drawings or company-provided field locations. The Contractor will be required to work around existing utilities which do not conflict with proposed construction.
- The Contractor to verify utility locations prior to construction of this project.
- Utility service and installation shall be coordinated with the respective utility owners. Contacts are:

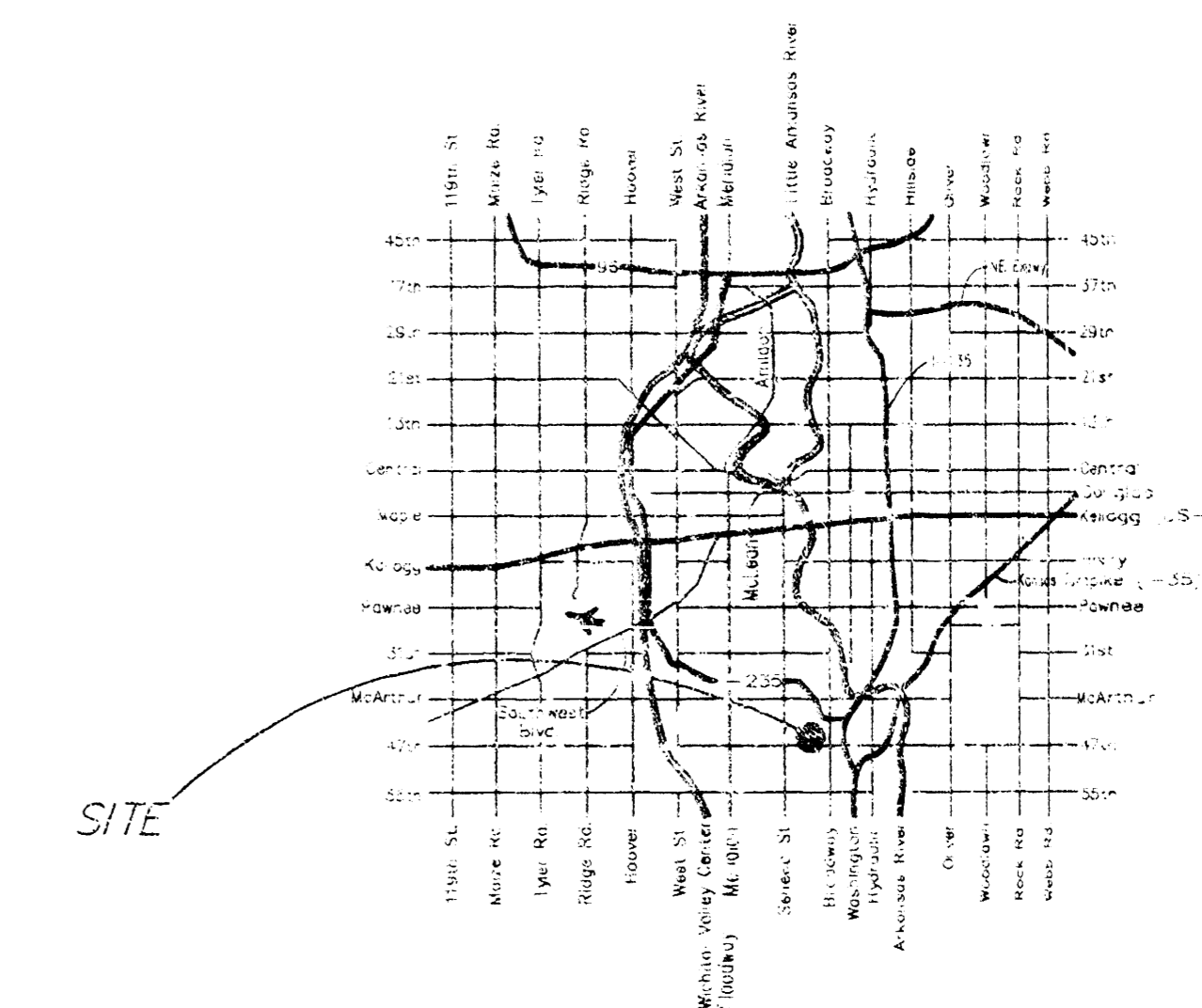
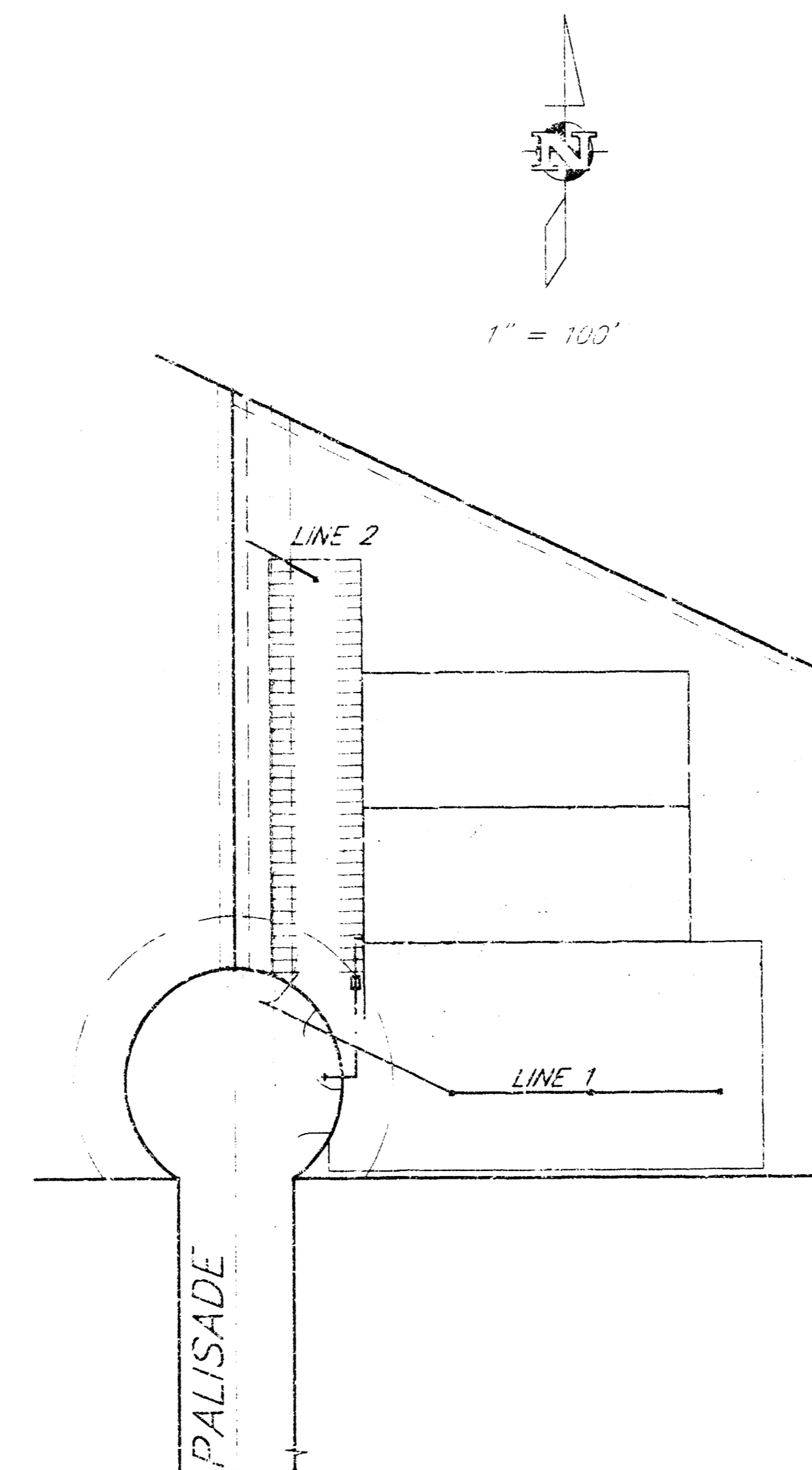
| | | |
|-------------------|--------------|----------|
| KG&E Gas | Shane Price | 261-6867 |
| K.G. & E. | Mies Capps | 261-6434 |
| Wichita Water | Paul Bryant | 268-4555 |
| | Steve Palmer | 268-4908 |
| Southwestern Bell | Jim Tabin | 268-2759 |
- All areas disturbed by construction operations shall be seeded with rye grass at a rate of 350 lbs/acre immediately following construction in that area. Ground shall be prepared per City of Wichita specifications prior to seeding.
- Traffic affected by the construction of this project shall be handled in accordance with the latest edition of the Manual on Uniform Traffic Control Devices.

BENCHMARK:

"□" CUT ON TOP OF SW CORNER
BRICK WALL AROUND SIGN @ NE CORNER
OF INTERSECTION PALISADE AND 41TH
ELEV. = 49.72

INDEX

- COVER SHEET
- PLAN AND PROFILE SHEETS 1 & 2



LOCATION MAP

APPROVED AS NOTED BY CITY ENGINEER OF WICHITA
 STORM SEWERS VRH 3/16/03

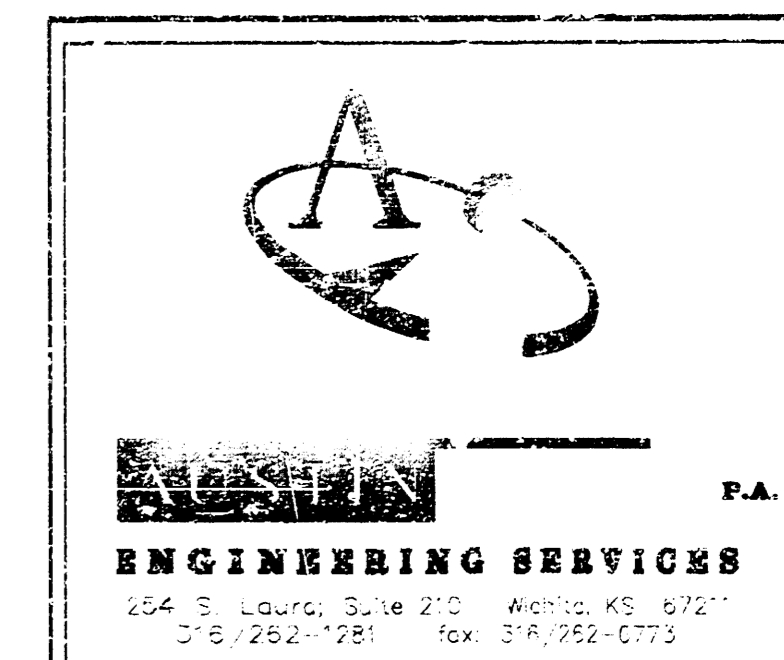
Inspection and testing for this project are to be provided by a Licensed Consulting Engineering Firm under contract with the Owner/Developer. Said inspection is to be in accordance with the City of Wichita standard construction engineering practices and certified by a Licensed Professional Engineer. No work shall be performed in abutted segments or public right-of-way by the Contractor without such inspection nor shall work be commenced without written authorization by the City Engineer. All construction and materials shall comply with the City of Wichita Specifications and Standards (on file and available in the City Engineer's Office).

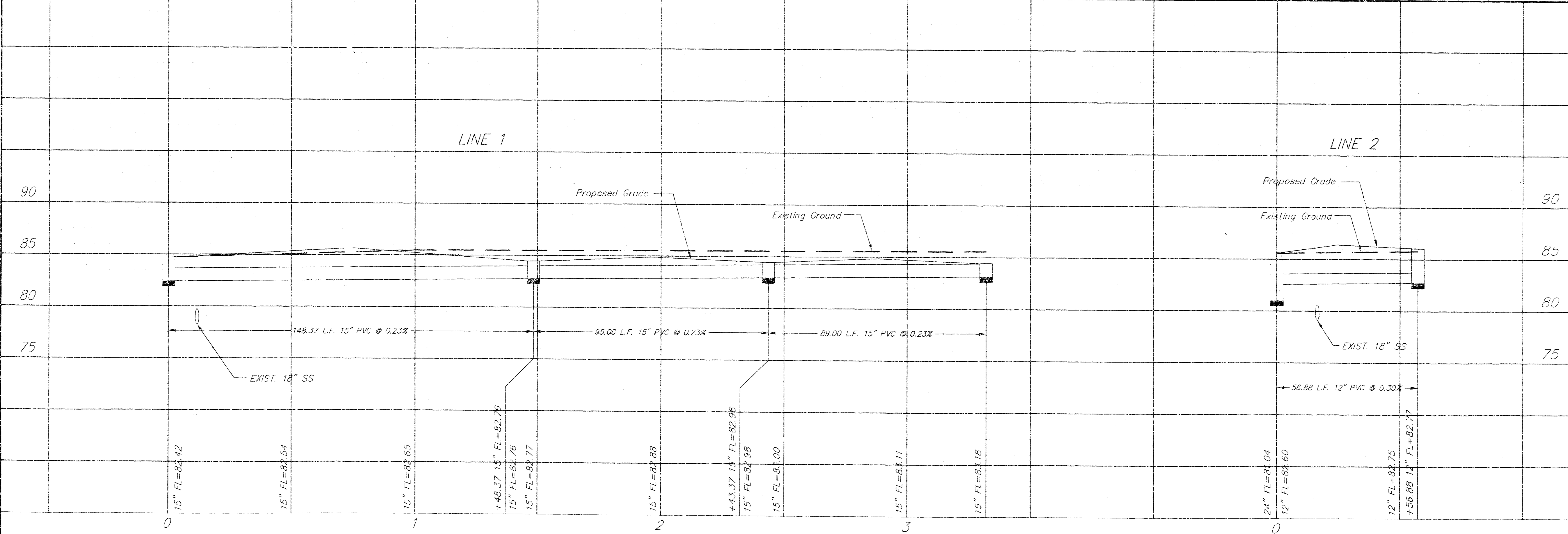
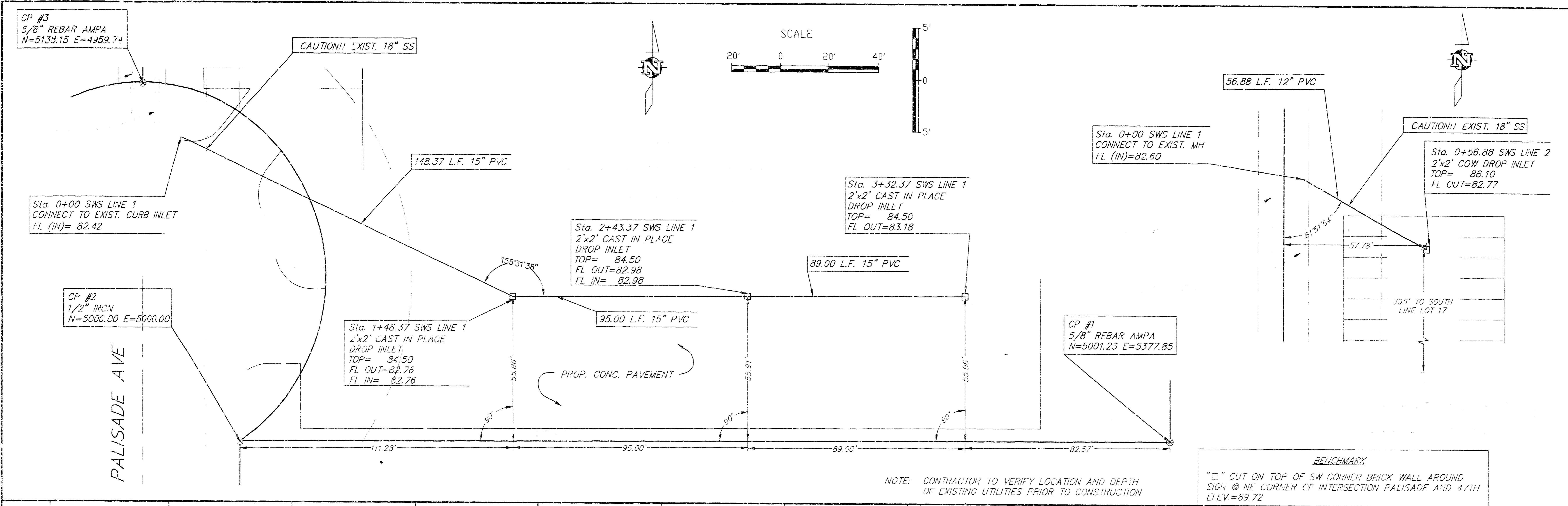
AS-BUILT
 Date: 8/19/03
 Signed: [Signature]



Booked
 E-4
 8/19/03
 RDL

99333/SWS/LNSCOV





| | | | | | | |
|--|----------------|-------|------|------|--------|---------|
| | PROJECT NUMBER | | | | AW NO. | SHEET |
| | DESIGN | DRAWN | FILE | DATE | 99333 | |
| | | | | | SCALE | OF |
| | | | | | 1"=20' | 2 |
| CITY OF WICHITA SWS LINE 1 THE EARTHRAINTS COMPANY | | | | | | REVISED |