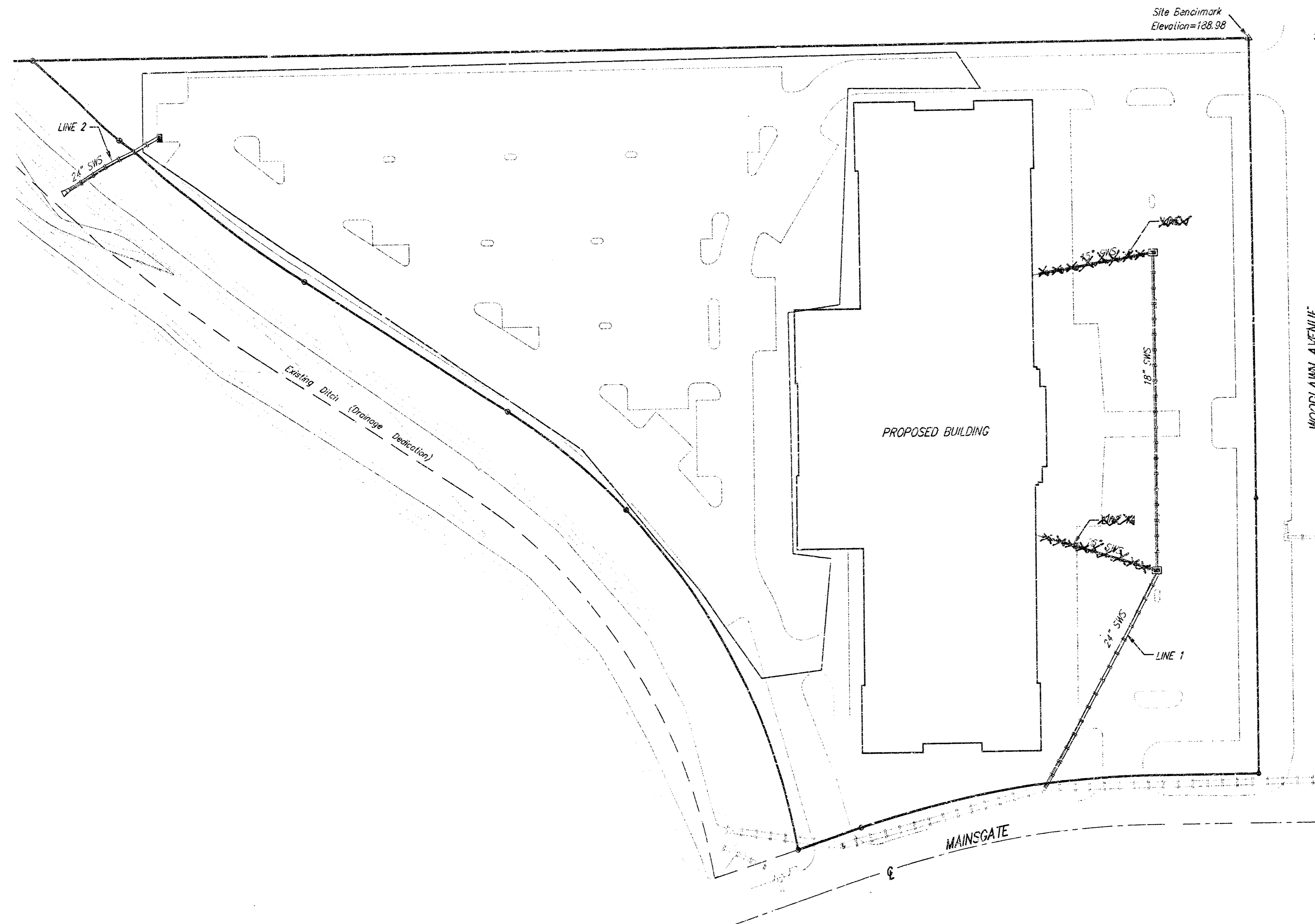


STORM WATER SEWER IMPROVEMENTS
to serve
Woodlawn Place 2nd Addition
CITY OF WICHITA, KANSAS

Michael E. Lindebak, P.E. City Engineer

Private Project Number
992 PPS (607861)

SCALE:
1" = 50'



LEGAL DESCRIPTION:

Woodlawn Place 2nd Addition, Lot 1, Block 1 to Wichita,
Sedgewick County, Kansas

BENCHMARK:

Located 24' North of centerline of hedgerow, 45.30' West
of centerline of Woodlawn and 26.6' NE of Power Pole.
COW Disc found between sidewalk and Woodlawn.
Elevation = 189.16 City Datum (1376.56' MSL)

GENERAL NOTES:

- Contractor will be required to provide notice to utility companies a minimum of forty-eight (48) hours prior to any excavation, as follows:
Kansas One-Call 687-2470
The Contractor must notify the following in case of an emergency:
Multimedia Cablevision 262-4270
Kansas Gas Service Company 383-8600
Kansas Gas & Electric Company 393-6850
Peoples Gas Company 942-7800
Southwestern Bell Telephone Company 1-571-2611
City of Wichita Water Department 263-4908
City of Wichita Sewer Department 268-4071
- Utility service lines, poles, valve boxes, meters, et cetera are to be adjusted as necessary by others prior to construction unless the plans specifically call for their adjustment by the Contractor or unless the plans specifically identify a utility to be adjusted by its owner during construction. Existing utilities and their location, as shown on the plans represent the best information obtainable for design and shall be field verified. The contractor will be required to work around existing utilities within the right-of-way which do not conflict with proposed construction.
- All disturbed areas not intended for pavement or sidewalk construction shall be seeded with Kansas Premium Fescue Blend at a rate of 8 lb./1000 Sq. Ft.
- Trees and shrubs in public right-of-way which are in direct conflict with proposed new construction shall be removed by the Contractor with the Engineer's approval. Trees and shrubs which are not in direct conflict with proposed new construction shall be saved and protected from damage.
- Contractor shall not start work on the project until the project inspector is assigned to the project and is present on the site. Any work done without inspection will be required to be uncovered for inspection.
- Rubble from the removal of miscellaneous structures and excess excavation which is to be wasted shall be disposed of on sites to be provided by the Contractor. These sites shall be approved by the Engineer as to suitability, appearance and site location. Locations that, in the opinion of the Engineer, will leave an unsightly appearance will not be approved. All disposal sites must be approved by the Kansas Department of Health and Environment. Material either stockpiled or disposed of in a flood plain would require a Kansas State Board of Agriculture permit. Any material dumped in waters of the United States or wetlands is subject to U.S. Corps. of Engineers permitting regulations. Any material buried or stockpiled beyond approved construction limits would require additional archaeological investigations unless buried in a previously approved borrow location.

INDEX:

Cover	1
Plan/Profile Sheet	2-3
Drop Inlet Detail	4
Copy of Plot	5

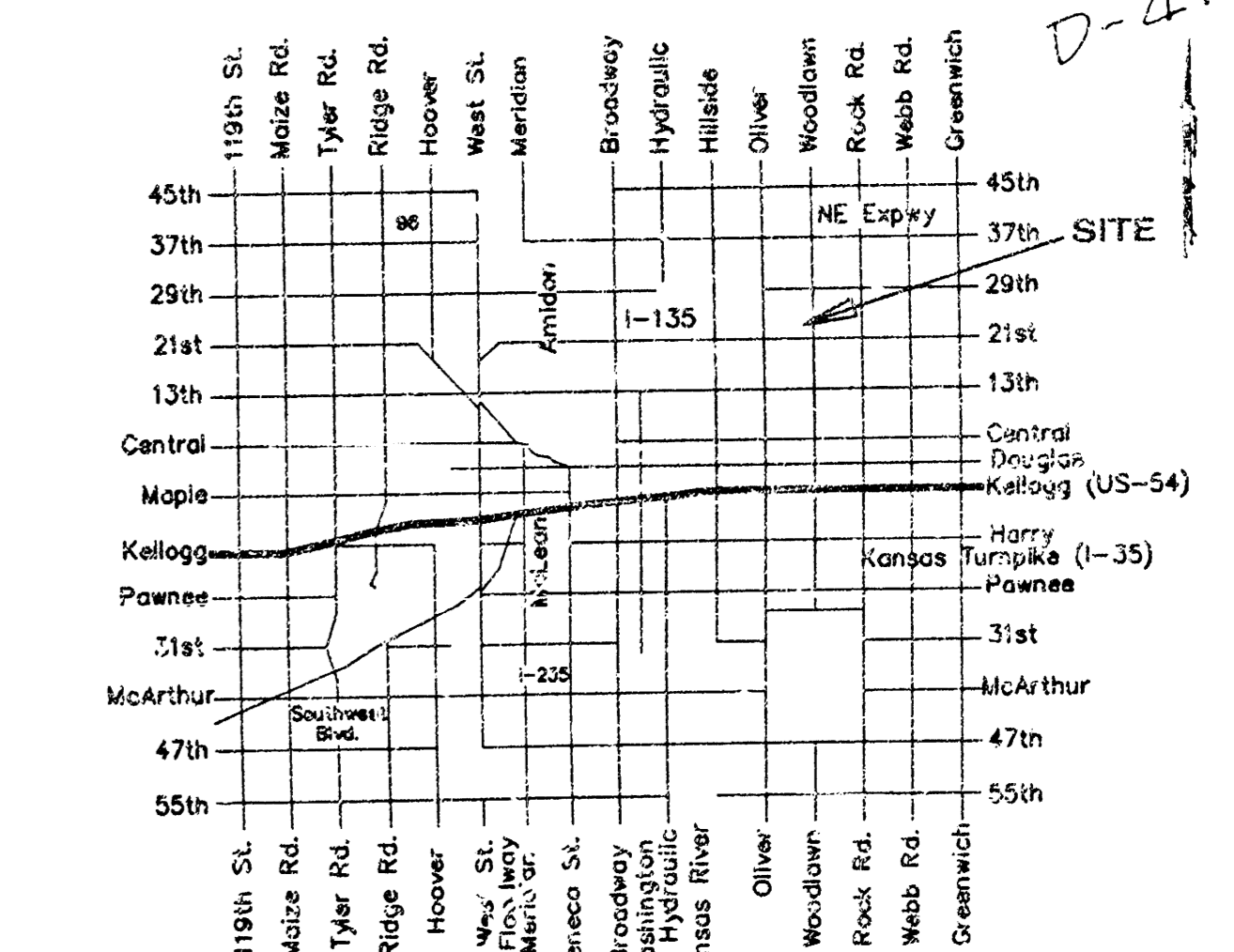
APPROVED AS NOTED
BY CITY ENGINEER OF WICHITA

Storm Sewers VRH 3/16/00

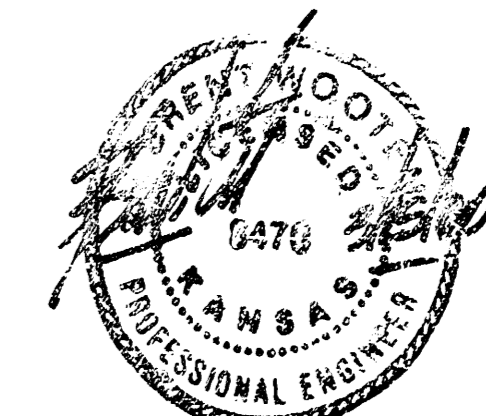
NOTE TO CONTRACTORS

Inspection and testing for this project is to be provided by a Licensed Consulting Engineering Firm under contract with the Owner/Developer. Said inspection to be in accordance with the City of Wichita standard construction engineering practices and certified by a Licensed Professional Engineer. No work shall be performed in dedicated easements or public right-of-way by the Contractor without such inspection nor shall any work be commenced without written authorization by the City Engineer. All Construction and Materials shall comply with the City of Wichita Specifications and Standards (on file and available in the City Engineer's Office).

BOOKED
8-25-00
MCG
D-477



Vicinity Map



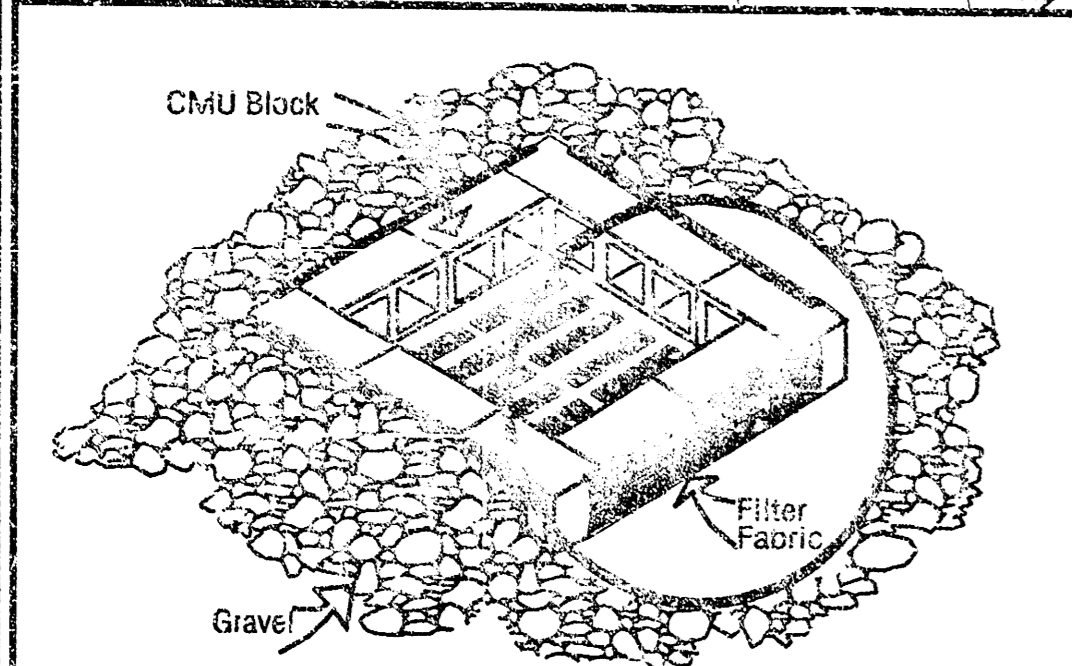
As Built & Inspected
By Baughman Co. P.A.
5/12/00

BAUGHMAN COMPANY P.A.
ENGINEERING, SURVEYING, & PLANNING
316-262-7271 • 316-ELI5 • WICHITA, KANSAS 67211

SITE BENCHMARK:

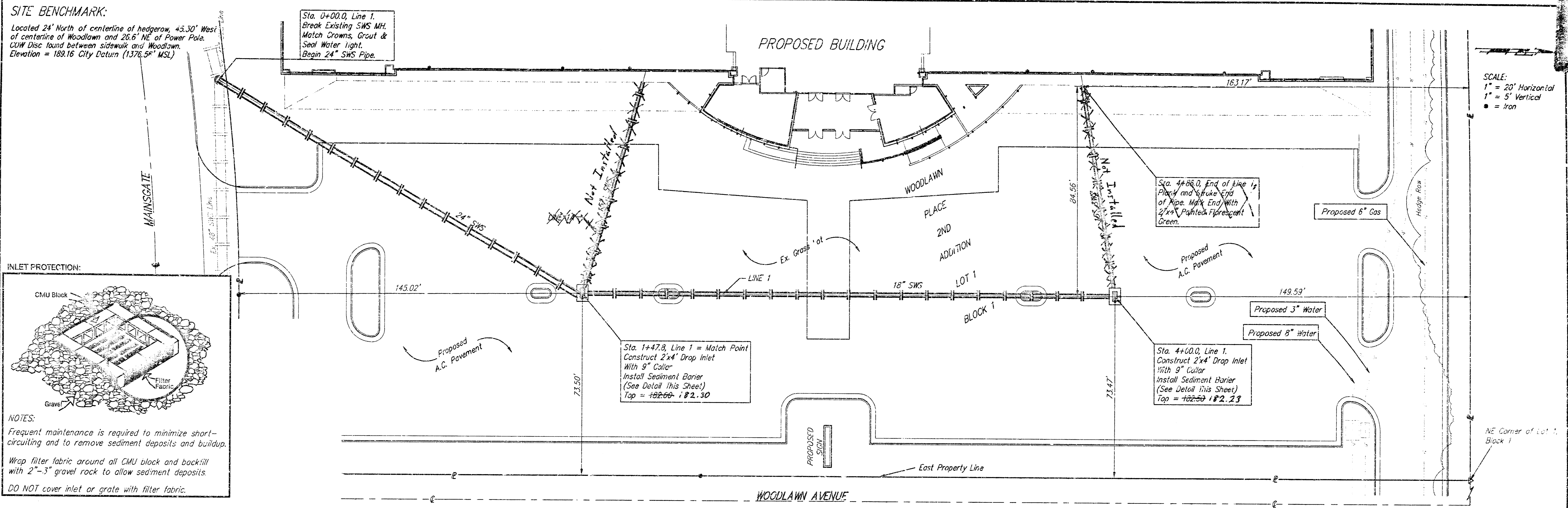
Located 24' North of centerline of hedgerow, +5.30' West of centerline of Woodlawn and 28.6' NE of Power Pole. CUM Disc found between sidewalk and Woodlawn. Elevation = 188.16 City Datum (1376.56' MSL)

INLET PROTECTION:

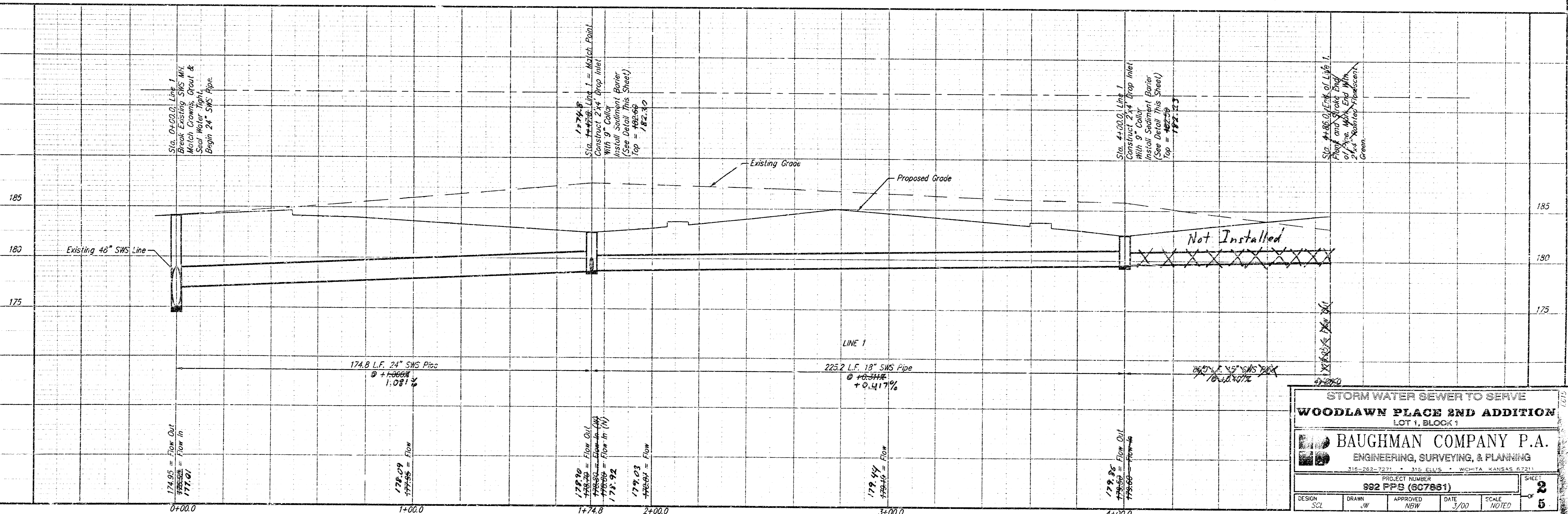


NOTES:

Frequent maintenance is required to minimize short-circuiting and to remove sediment deposits and buildup.
Wrap filter fabric around all CMU block and backfill with 2"-3" gravel rock to allow sediment deposits.
DO NOT cover inlet or grate with filter fabric.



SCALE:
1" = 20' Horizontal
1" = 5' Vertical
● = Iron



STORM WATER SEWER TO SERVE WOODLAWN PLACE 2ND ADDITION LOT 1, BLOCK 1

BAUGHMAN COMPANY P.A.
ENGINEERING, SURVEYING, & PLANNING
315-262-7271 • 315 ELLIS • WICHITA, KANSAS 67213

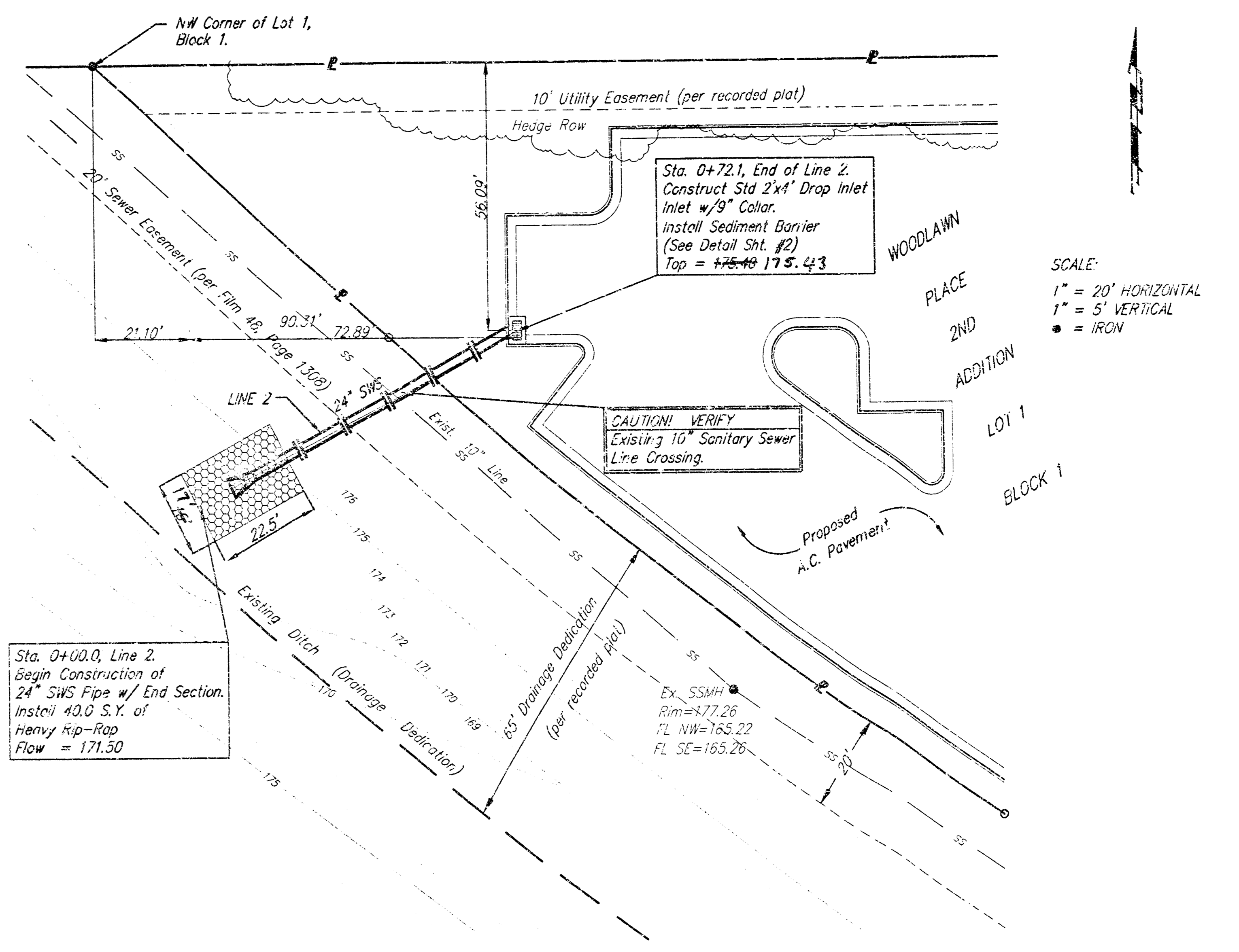
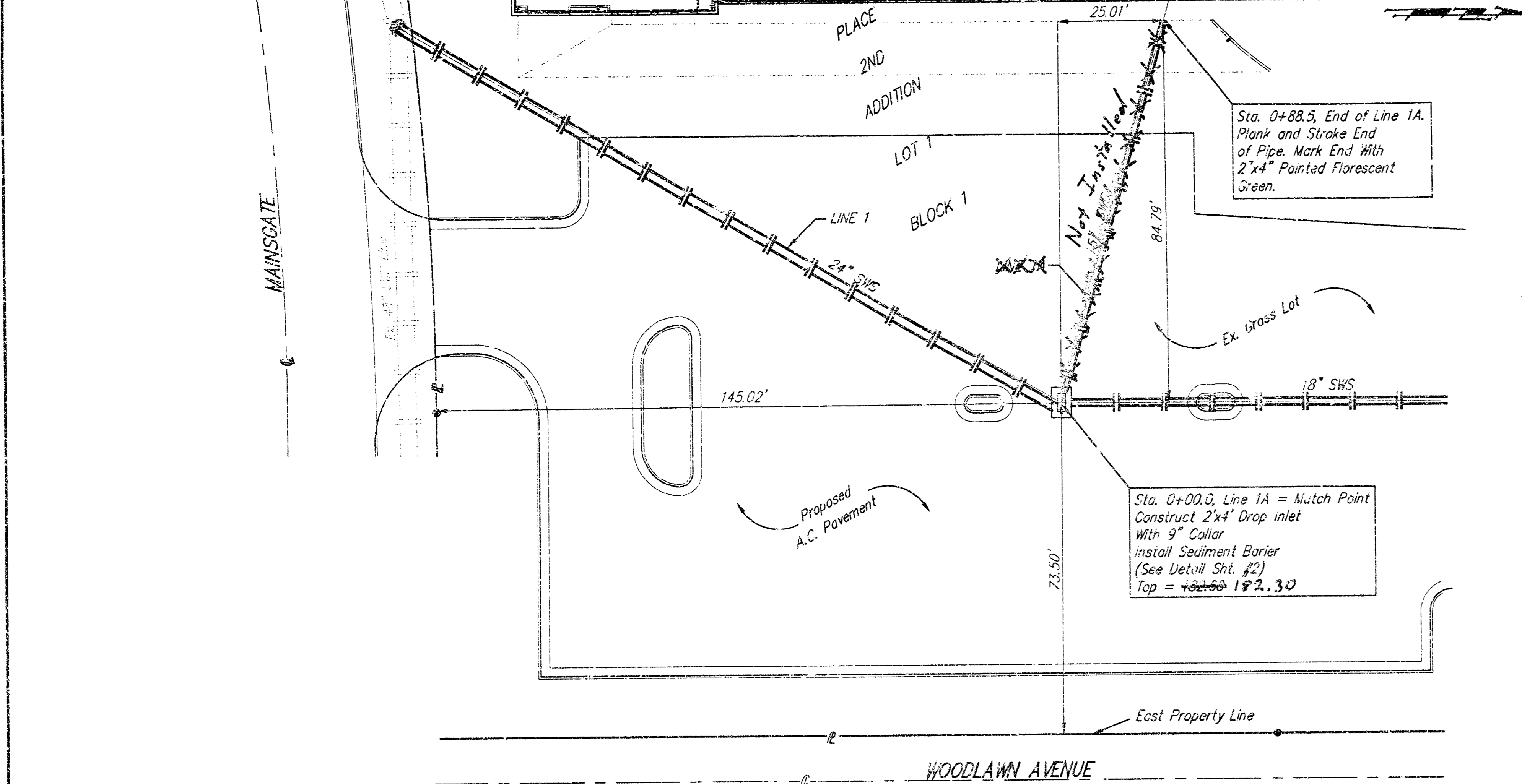
PROJECT NUMBER: **892 PPS (807861)**

DESIGN: [] DRAWN: [] APPROVED: [] DATE: 3/00 SCALE: NOTED

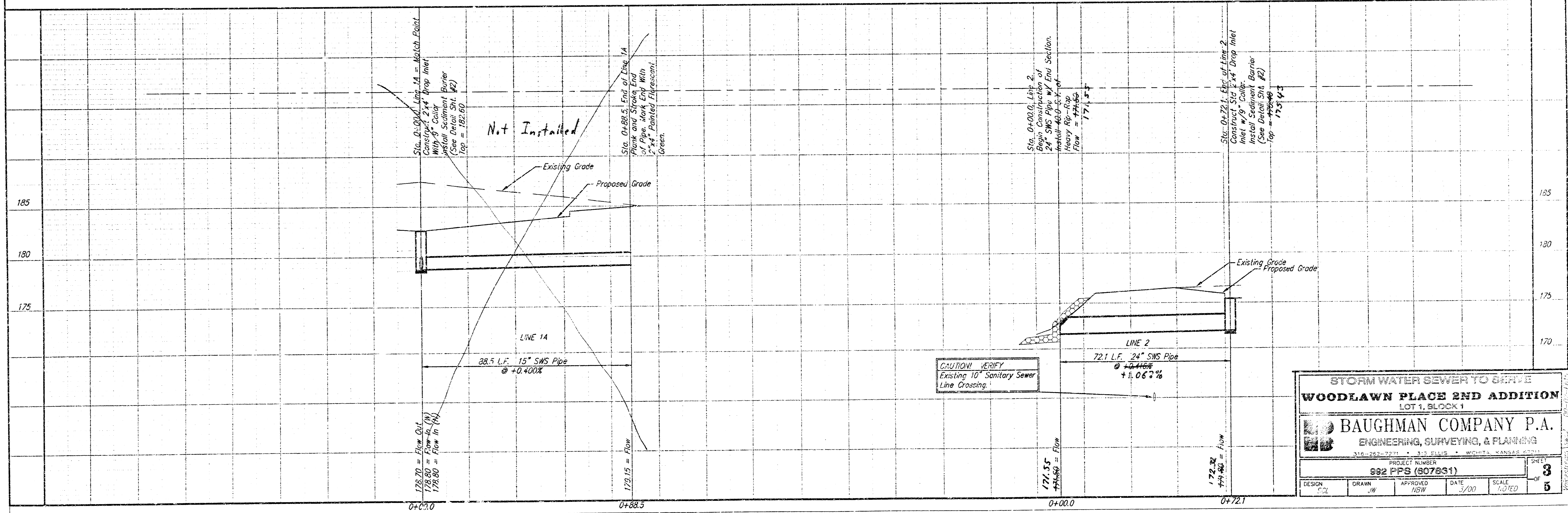
SHEET: **2** OF **5**

SITE BENCHMARK:

Located 24' North of centerline of hedgerow, 45.30' West of centerline of Woodlawn and 26.6' NE of Power Pole.
 COW Disc found between sidewalk and Woodlawn.
 Elevation = 189.15 City Datum (1376.56' MSL)



SCALE:
 1" = 20' HORIZONTAL
 1" = 5' VERTICAL
 ● = IRON



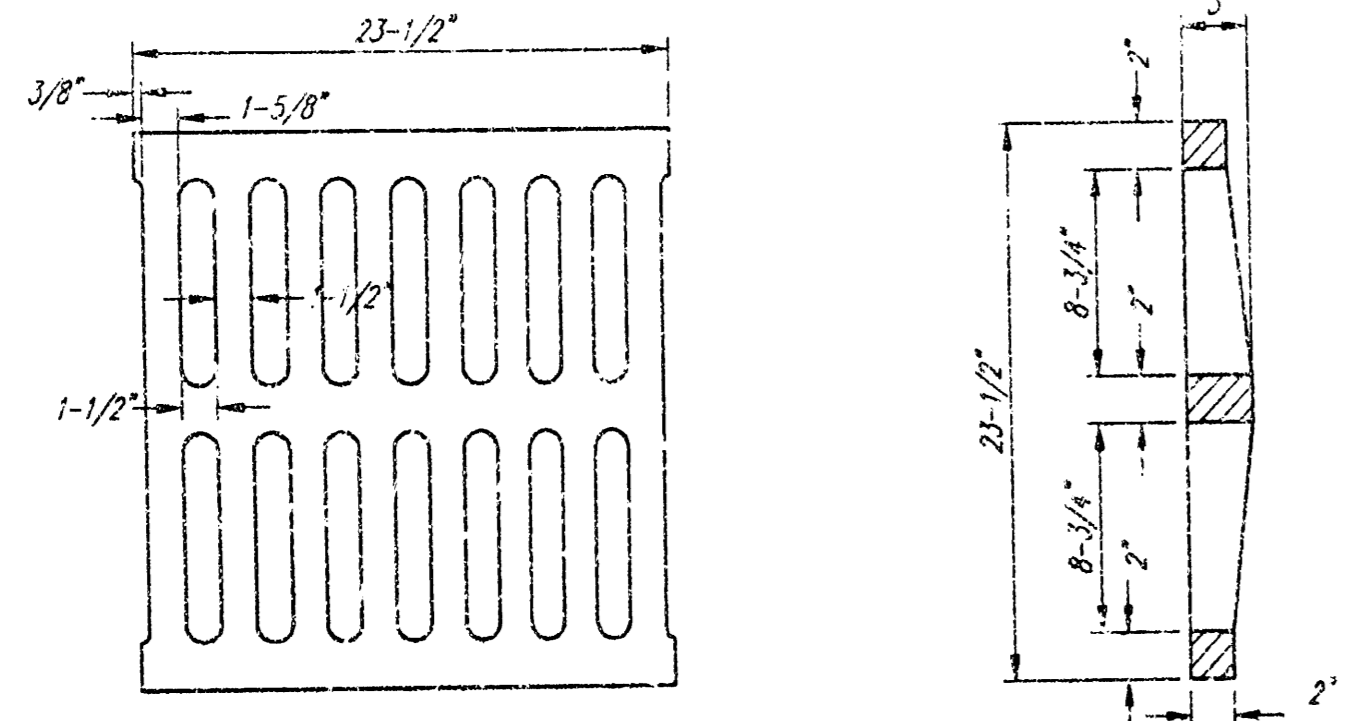
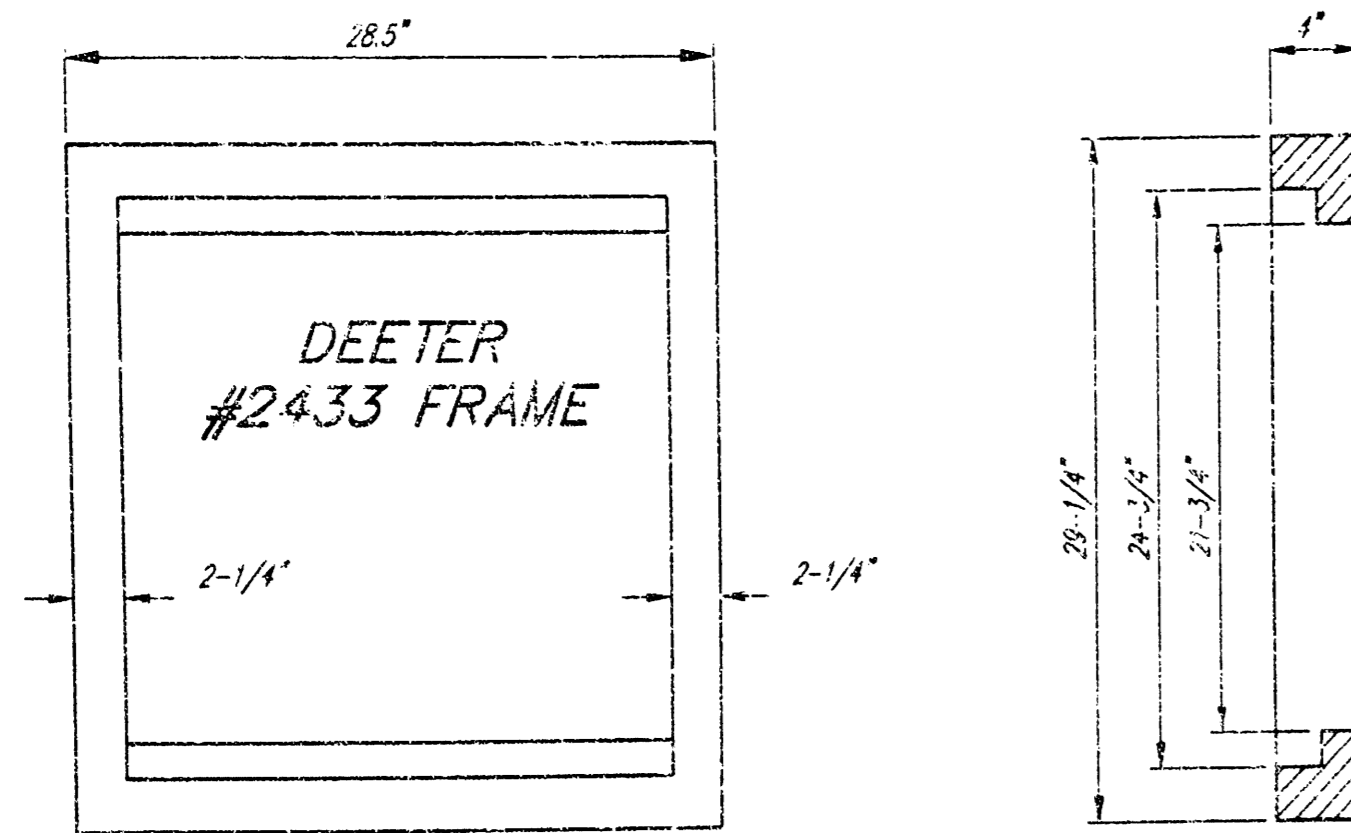
STORM WATER SEWER TO SERVE
WOODLAWN PLACE 2ND ADDITION
 LOT 1, BLOCK 1

BAUGHMAN COMPANY P.A.
 ENGINEERING, SURVEYING, & PLANNING

PROJECT NUMBER
992 PPS (607831)

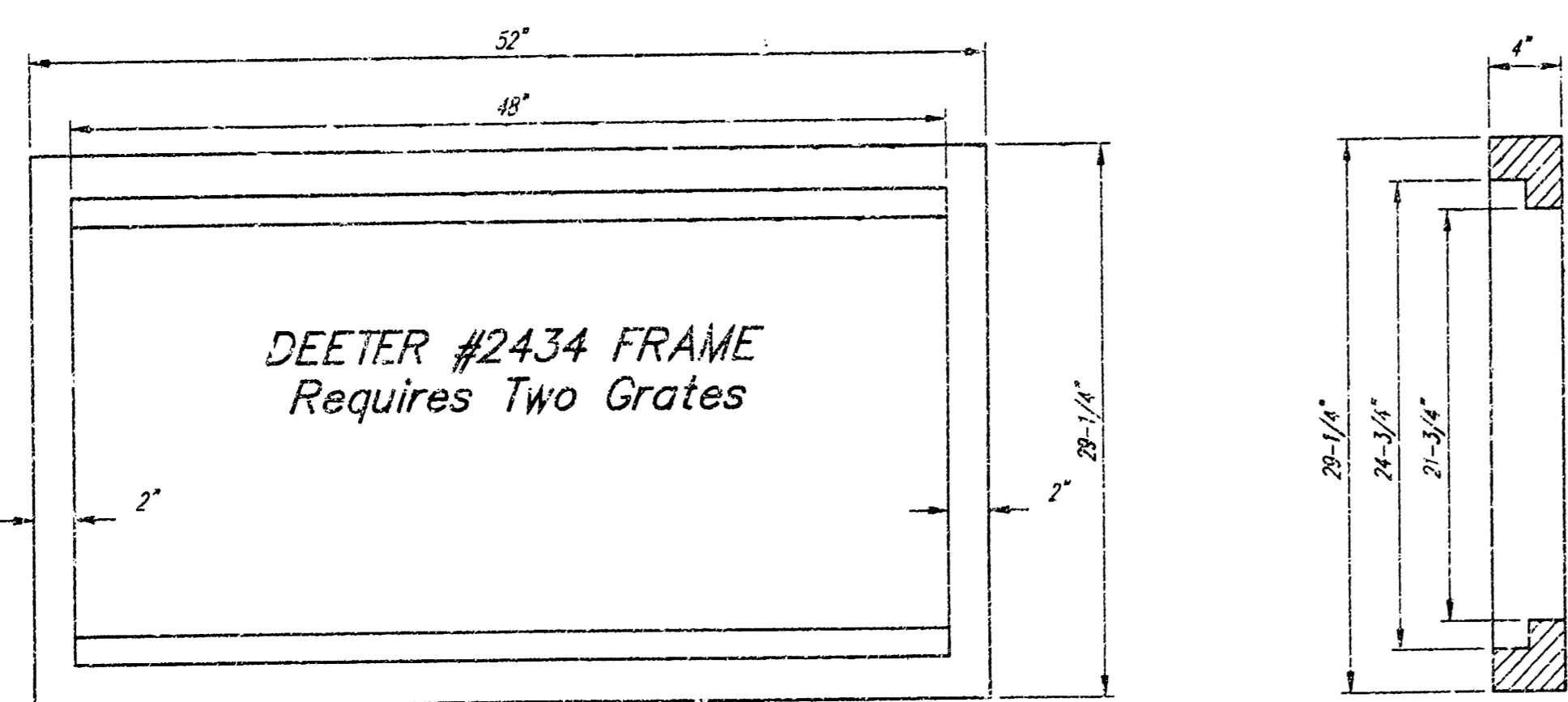
DESIGN	DRAWN	APPROVED	DATE	SCALE
CSL	JW	NSW	3/00	NOTED

SHEET
3
 OF
5

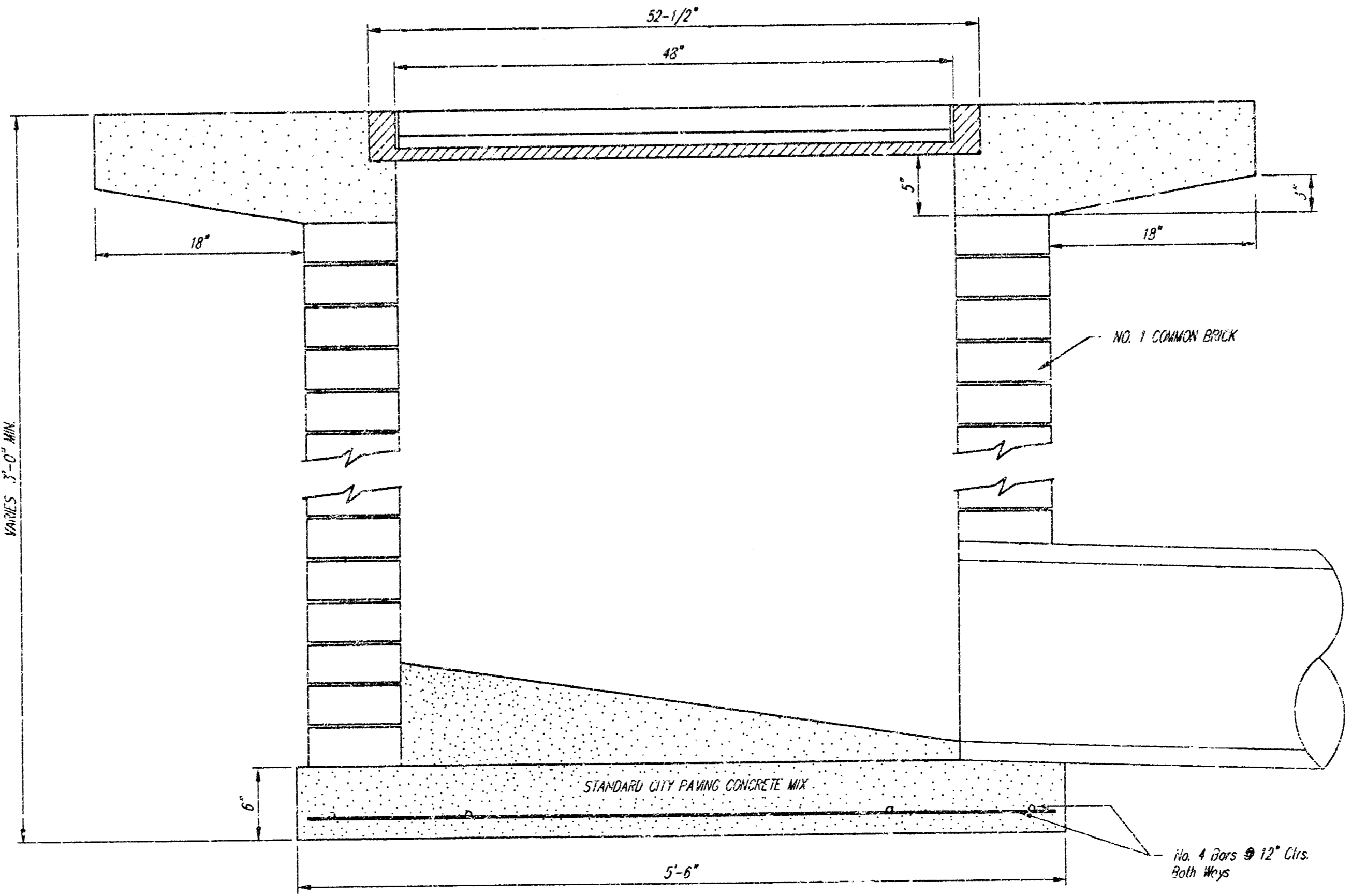
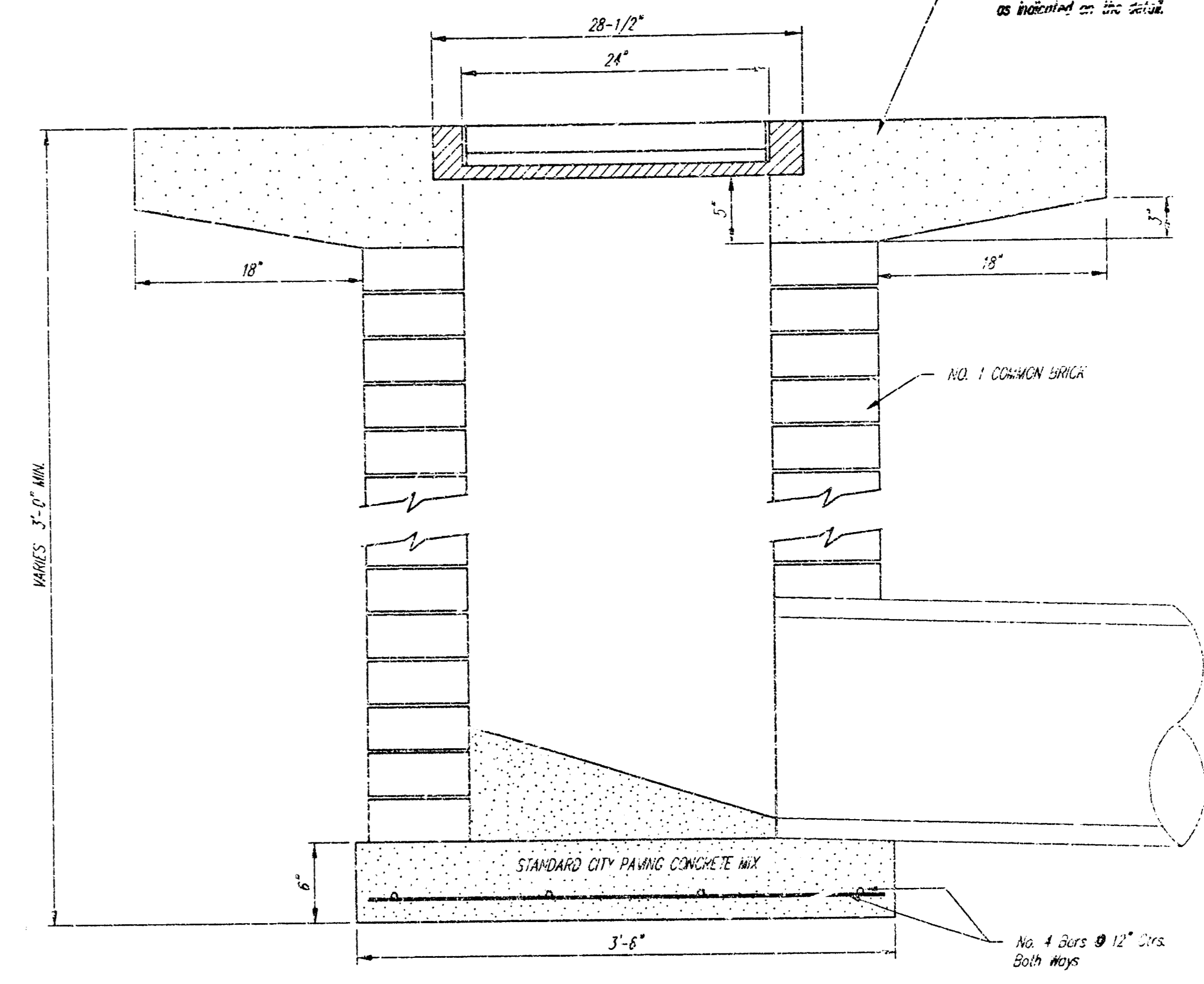
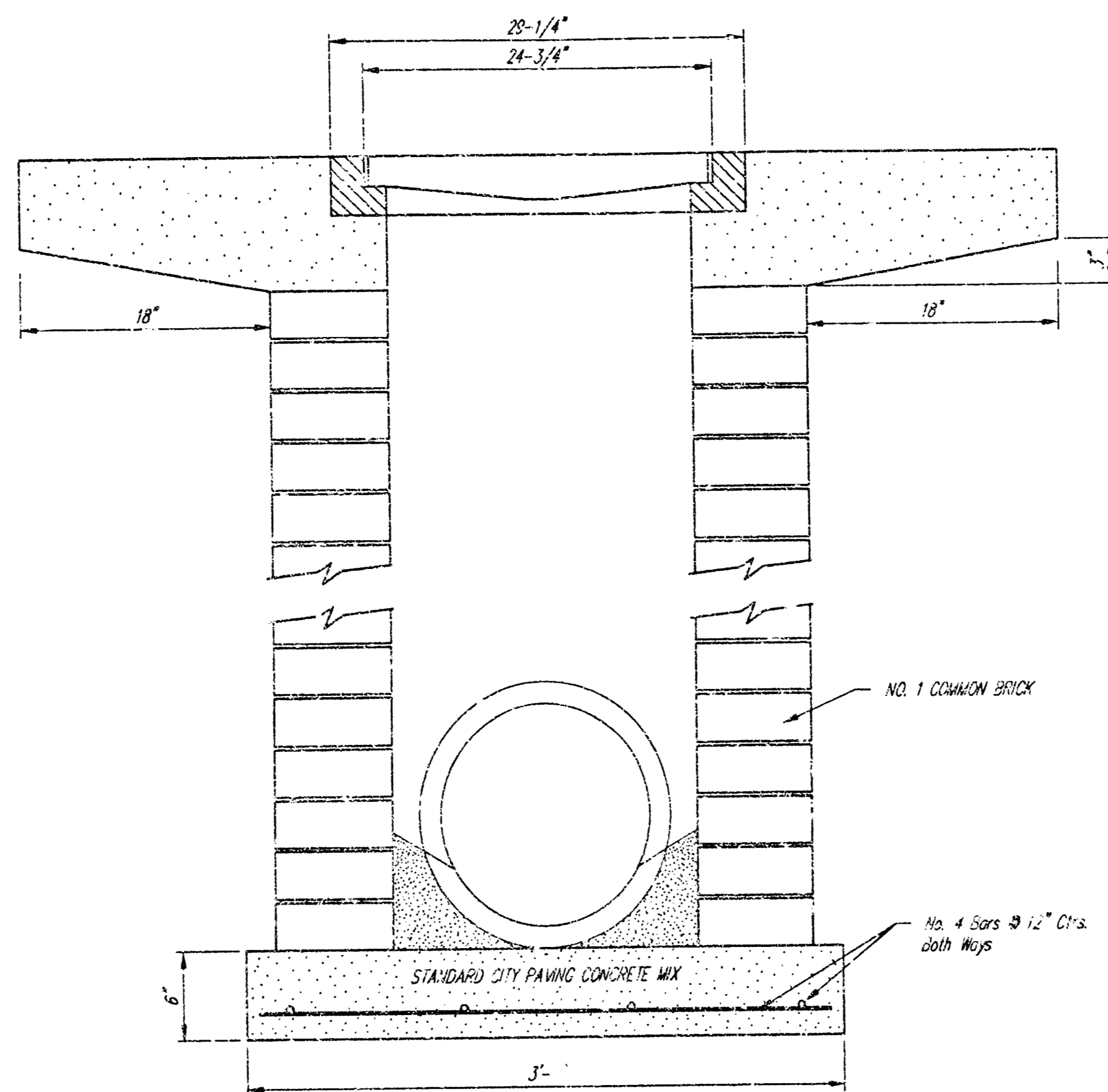


DEETER #2433 GRATE
24" x 24" Frame and Grate Detail

NOTE: Grates shall be imprinted on the top surface with "CITY OF WICHITA" using letters at least 1" in height. Other marking methods may be approved by the engineer.



Double 24" x 24" Frame Detail

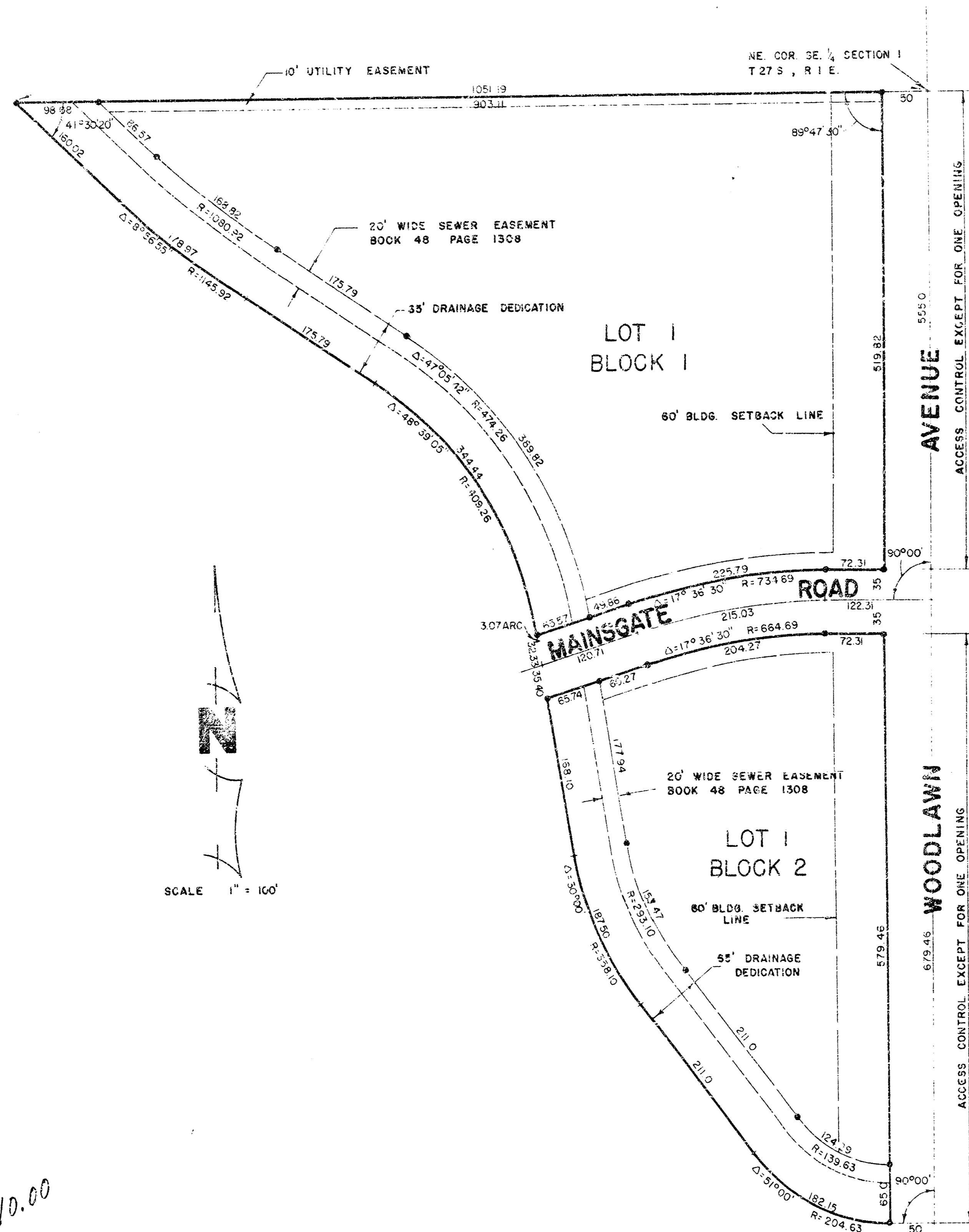


CITY OF WICHITA				
STANDARD DROP INLET				
Woodlawn Plaza 2nd Addition				
BAUGHMAN COMPANY P.A.				
ENGINEERING, SURVEYING, & PLANNING				
316-262-2271 • 316 ELLIS • WICHITA, KANSAS 67201				
PROJECT NUMBER 982 PPS (607881)				SHEET 4
DESIGN STAFF	DRAWN STAFF	APPROVED	DATE	SCALE NONE
				5

Woodlawn Place 2nd Addition

TO WICHITA SEDGWICK COUNTY KANSAS

ENGINEER: REISS AND GOODNESS ENGINEERS
2160 E. DOUGLAS WICHITA - KANSAS



STATE OF KANSAS)
COUNTY OF SEDGWICK)

I, CHARLES M. GOODNESS, a duly licensed PROFESSIONAL ENGINEER IN THE SAID COUNTY AND STATE, DO HEREBY CERTIFY THAT I HAVE SURVEYED AND NORTHWEST CORNER OF SECTION 1, T 27 S, R 1 E OF THE 6th P.M., SEDGWICK COUNTY, KANSAS; THENCE SOUTH 1234.46 FEET TO THE POINT OF BEGINNING; THENCE WEST PERPENDICULAR TO THE EAST LINE OF SAID SOUTHEAST QUARTER CURVE; THENCE ON A CURVE TO THE RIGHT HAVING A DELTA ANGLE OF 51°00' AND A RADIUS OF 204.63 FEET AN

AND PROFESSIONAL ENGINEER IN THE SAID COUNTY AND STATE, DO HEREBY CERTIFY THAT I HAVE SURVEYED AND NORTHWEST CORNER OF SECTION 1, T 27 S, R 1 E OF THE 6th P.M., SEDGWICK COUNTY, KANSAS; THENCE SOUTH 1234.46 FEET TO THE POINT OF BEGINNING; THENCE WEST PERPENDICULAR TO THE EAST LINE OF SAID SOUTHEAST QUARTER CURVE; THENCE ON A CURVE TO THE RIGHT HAVING A DELTA ANGLE OF 51°00' AND A RADIUS OF 204.63 FEET AN

AND A RADIUS OF 358.10 FEET AN ARC DISTANCE OF 187.50 FEET TO A POINT OF TANGENCY; THENCE CONTINUING ON SAID TANGENT A DISTANCE OF 211.0 FEET TO A POINT OF CURVE; THENCE ON A CURVE TO THE RIGHT HAVING A DELTA ANGLE OF 30°00' AND A RADIUS OF 358.10 FEET AN ARC DISTANCE OF 187.50 FEET TO A POINT OF TANGENCY; THENCE CONTINUING ON SAID TANGENT A DISTANCE OF 235.83 FEET TO A POINT OF CURVE; THENCE ON A CURVE TO THE LEFT HAVING A DELTA ANGLE OF 48°39'05" AND A RADIUS OF 409.26 FEET AN ARC DISTANCE OF 307.51 FEET TO A POINT OF TANGENCY; THENCE CONTINUING ON SAID TANGENT A DISTANCE OF 175.79 FEET TO A POINT OF CURVE; THENCE ON A CURVE TO THE RIGHT HAVING A DELTA ANGLE OF 8°56'55" AND A RADIUS OF 1145.92 FEET AN ARC DISTANCE OF 178.97 FEET TO A POINT OF TANGENCY; THENCE CONTINUING ON SAID TANGENT A DISTANCE OF 160.02 FEET TO A POINT ON THE NORTH LINE OF SAID SOUTHEAST QUARTER OF SECTION 1; THENCE EAST 1051.19 FEET TO THE POINT OF BEGINNING. EXCEPT A 70-FOOT WIDE STREET RIGHT OF WAY BEING 35 FEET ON EACH SIDE OF A LINE DESCRIBED AS FOLLOWS: BEGINNING AT A POINT ON THE EAST LINE OF THE SOUTHEAST QUARTER OF SECTION 1, T 27 S, R 1 E OF THE 6th P.M., SEDGWICK COUNTY, KANSAS SAID POINT BEING 555.0 FEET SOUTH OF THE NORTHEAST CORNER OF SAID SOUTHEAST QUARTER; THENCE WEST PERPENDICULAR TO THE EAST LINE OF SAID SOUTHEAST QUARTER A DISTANCE OF 122.31 FEET TO A POINT OF CURVE; THENCE ON A CURVE TO THE LEFT HAVING A DELTA ANGLE OF 17°36'30" AND A RADIUS OF 699.69 FEET AN ARC DISTANCE OF 215.03 FEET TO A POINT OF TANGENCY; THENCE CONTINUING ON SAID TANGENT A DISTANCE OF 120.71 FEET; BOTH SIDES OF SAID STREET RIGHT OF WAY EXTENDING TO THEIR INTERSECTION WITH THE WESTERLY LINE OF THE ABOVE DESCRIBED PROPERTY. THE TOTAL AREA OF THE ABOVE DESCRIBED PROPERTY BEING 13.9 ACRES MORE OR LESS. THE ACCOMPANYING PLAT IS A TRUE AND CORRECT EXHIBIT OF THE PROPERTY SURVEYED.

Charles M. Goodness
Charles M. Goodness, P. E.

KNOW ALL MEN BY THESE PRESENTS:

THAT WE, FIDELITY DEVELOPMENT, INC., A CORPORATION, BY ITS PRESIDENT, H. MARVIN BASTIAN AND SECRETARY, H. M. MCCLURE, HAVE CAUSED THE LAND DESCRIBED IN THE ENGINEER'S CERTIFICATE TO BE PLATTED INTO BLOCKS, LOTS AND A STREET. EASEMENTS ARE HEREBY GRANTED AS INDICATED FOR UTILITY AND DRAINAGE CONSTRUCTION AND MAINTENANCE. THE 65' WIDE DRAINAGE DEDICATION IS HEREBY DEDICATED FOR CONSTRUCTION, OPERATION, MAINTENANCE AND REPAIRING SUCH DRAINAGE SYSTEM. THE STREETS ARE HEREBY DEDICATED TO AND FOR THE USE OF THE PUBLIC. ALL ADJUTER'S RIGHTS OF ACCESS TO OR FROM WOODLAWN AVENUE OVER AND ACROSS THE EAST LINE OF LOT 1, BLOCK 1 OR THE EAST LINE OF LOT 1, BLOCK 2 ARE HEREBY GRANTED TO THE APPROPRIATE GOVERNING BODY EXCEPT THAT LOT 1, BLOCK 1 AND LOT 1, BLOCK 2 SHALL EACH HAVE ONE OPENING TO WOODLAWN AS SHALL BE DETERMINED BY THE CITY ENGINEER OF THE CITY OF WICHITA.

FIDELITY DEVELOPMENT, INC.

H. Marvin Bastian PRESIDENT
H. Marvin Bastian
H. M. McClure SECRETARY
H. M. McClure

STATE OF KANSAS)
COUNTY OF SEDGWICK)

BE IT REMEMBERED THAT ON THIS 23RD DAY OF OCTOBER, 1975, BEFORE ME, A NOTARY PUBLIC IN AND FOR SAID COUNTY AND STATE, CAME FIDELITY DEVELOPMENT, INC., A CORPORATION, BY ITS PRESIDENT, H. MARVIN BASTIAN AND SECRETARY, H. M. MCCLURE TO BE KNOWN TO BE THE SAME PERSONS WHO EXECUTED THE FOREGOING INSTRUMENT OF WRITING AND DULY ACKNOWLEDGED THE SAME AS THEIR VOLUNTARY ACT AND DEED. IN TESTIMONY WHEREOF I HAVE HERETO SET MY HAND AND AFFIXED MY NOTARIAL SEAL THE DAY AND YEAR ABOVE WRITTEN.

MY COMMISSION EXPIRES February 17, 1977

Shirley Howard NOTARY PUBLIC
SHIRLEY HOWARD (SEAL)

THIS PLAT OF WOODLAWN PLACE 2ND ADDITION TO WICHITA, SEDGWICK COUNTY, KANSAS HAS BEEN SUBMITTED TO AND APPROVED BY THE WICHITA-SEGWICK COUNTY METROPOLITAN AREA PLANNING COMMISSION, WICHITA, KANSAS.

DATED THIS 23RD DAY OF OCTOBER, 1975.

WICHITA-SEGWICK COUNTY METROPOLITAN
AREA PLANNING COMMISSION

David Bayouth CHAIRMAN
David Bayouth

Robert A. Lakin SECRETARY
Robert A. Lakin

THIS PLAT APPROVED AND THE DEDICATIONS SHOWN HEREON ACCEPTED BY THE CITY COMMISSIONERS OF THE CITY OF WICHITA, KANSAS.

THIS 9 DAY OF DEC., 1975

Conrad A. Peters MAYOR
Conrad A. Peters

Donald C. Gistick CITY CLERK
Donald C. Gistick

THIS PLAT APPROVED AND THE DEDICATIONS SHOWN HEREON ACCEPTED BY THE BOARD OF COUNTY COMMISSIONERS OF SEDGWICK COUNTY, KANSAS.

THIS 1 DAY OF December, 1975

Earl E. Bush CHAIRMAN
Earl E. Bush

John Scott COMMISSIONER
John Scott

Tom Scott COMMISSIONER
Tom Scott

Entered on Transfer Record this 23rd day of December, 1975

George Pierce COUNTY CLERK
George Pierce

STATE OF KANSAS)
COUNTY OF SEDGWICK)

THIS IS TO CERTIFY THAT THIS INSTRUMENT WAS FILED FOR RECORD IN THE REGISTER OF DEEDS OFFICE AT 9:30 A.M. --P.M. ON THE 23RD DAY OF DECEMBER, 1975

Pat Kettler REGISTER OF DEEDS
Pat Kettler

Pat Kettler DEPUTY
PAT KETTLER

#259731

C-1 7-16

11 40 04 11