

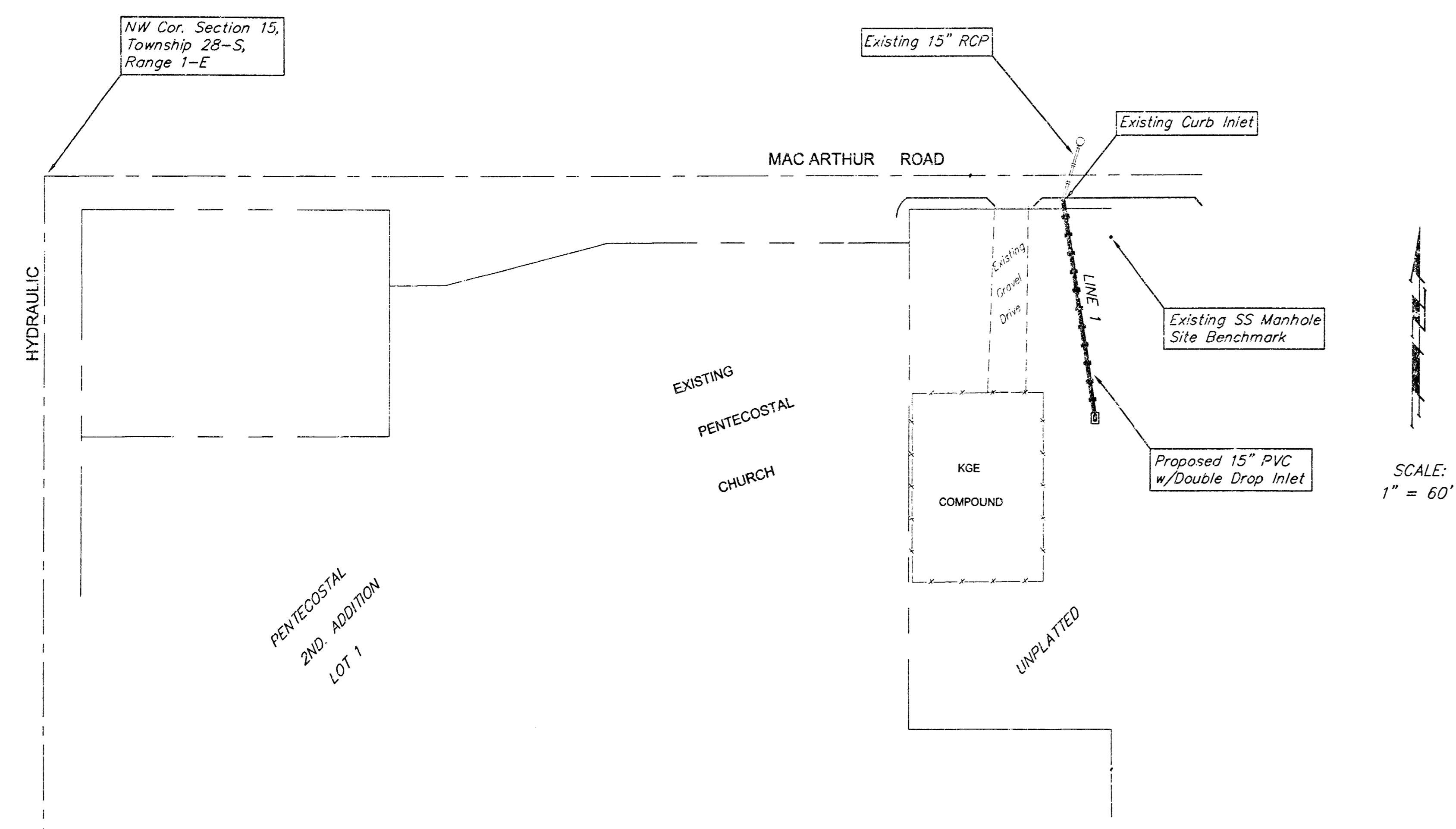
STORM WATER SEWER TO SERVE FIRST UNITED PENTECOSTAL CHURCH PARKING LOT

Private Project Number
1001 PPS (607861)

CITY OF WICHITA, KANSAS
Michael E. Lindebak, P.E. City Engineer
APRIL 2000

INDEX

Cover Sheet	1
Plan/Profile Sheet Line 1	2
Drop Inlet & Sediment Barrier Details	3
Copy Of Plat	4



NW Cor. Section 15,
Township 28-S,
Range 1-E

HYDRAULIC

PENTECOSTAL
2ND ADDITION
LOT 1

SCALE:
1" = 60'

GENERAL NOTES:

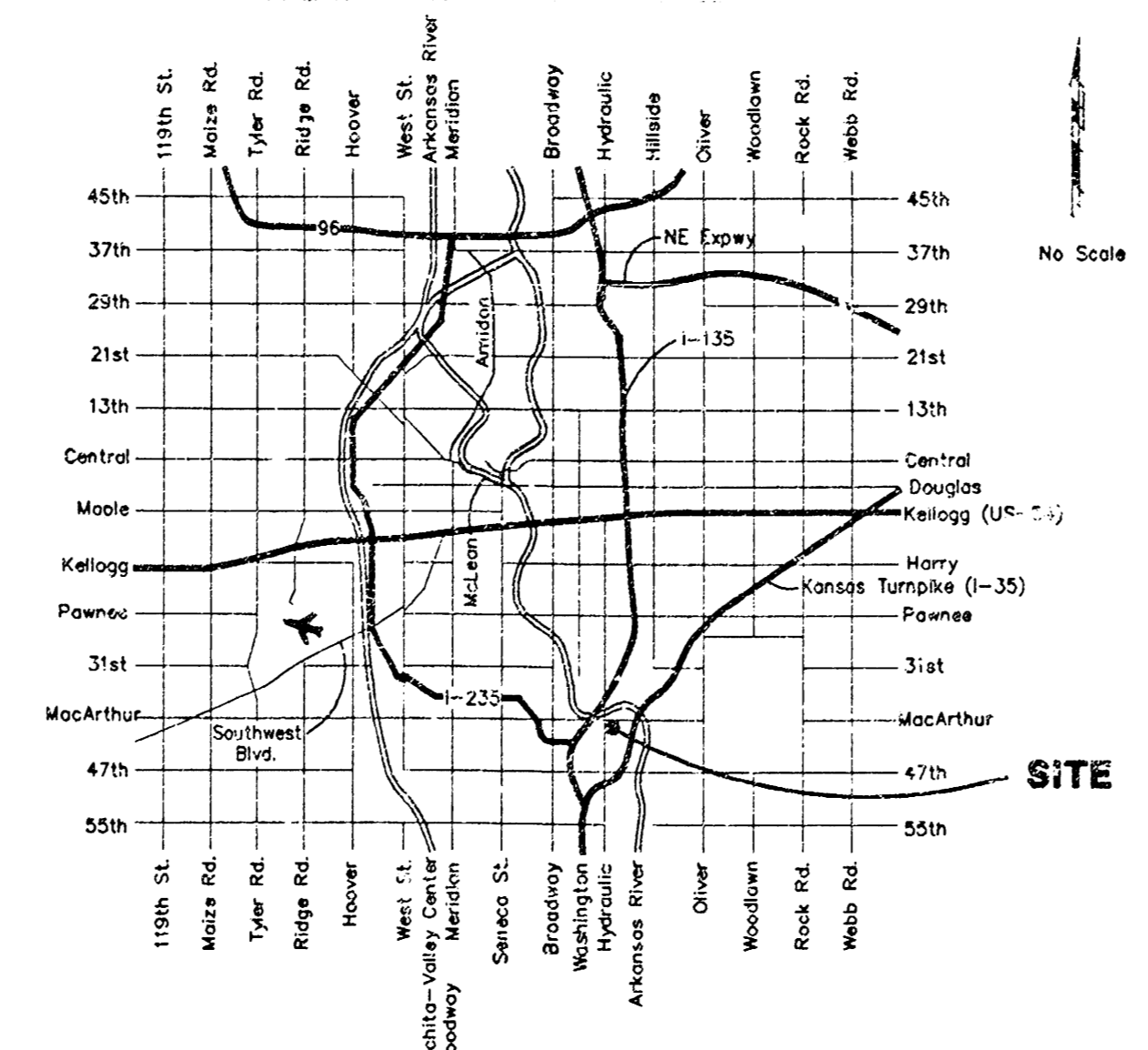
- Contractor will be required to provide notice to utility companies a minimum of forty-eight (48) hours prior to any excavation, as follows:

Kansas One-Call	687-2470
Cox Communications	262-4270
Kansas Gas Service	383-8600
KGE	383-8650
Peoples Gas Company	942-7600
Southwestern Bell Telephone Company	1-571-2611
City of Wichita Water Department	268-4908
City of Wichita Sewer Maintenance	268-4071

The Contractor must notify the following in case of an emergency:
- Underground utility service lines and overhead utility pole lines are to be adjusted as necessary by others prior to construction unless the plans specifically call for their adjustment by the Contractor or unless the plans specifically identify a utility to be adjusted by its owner during construction. Existing utilities and their location, as shown on the plans, represent the best information obtainable for design and shall be field verified by the Contractor. The Contractor will be required to work around existing utilities within the right-of-way which do not conflict with proposed construction.
- Contractor shall not start work on the project until the Project Inspector is assigned to the project and is present on the site. Any work done without inspection will be required to be uncovered for inspection.
- All disturbed R/W areas not intended for pavement or sidewalk construction shall be seeded with Kansas Premium Fescue Blend at a rate of 8 lb./1000 Sq. Ft., fertilized with a 16-20-6 ratio at a rate of 4 lb./1000 Sq. Ft., and mulched with Prairie Hay at a rate of 92 lb./1000 Sq. Ft. Mulch shall be "patted" with forks or punched into soil to reduce loss due to wind.
- The Contractor shall notify pipeline companies at least 48 hours in advance of work being performed across and/or adjacent to pipelines.
- Rubble from the removal of miscellaneous structures and excess excavation which is to be wasted shall be disposed of on sites to be provided by the Contractor. These sites shall be approved by the Engineer as to suitability, appearance and site location. Locations that, in the opinion of the Engineer, will leave an unsightly appearance will not be approved. All disposal sites must be approved by the Kansas Department of Health and Environment. Material either stockpiled or disposed of in a flood plain would require a Kansas State Board of Agriculture permit. Any material dumped in waters of the United States or wetlands is subject to U.S. Corps. of Engineers permitting regulations. Any material buried or stockpiled beyond approved construction limits would require additional archaeological investigations unless buried in a previously approved borrow location.

BOOKLET
11-28-00
MEL
D-APP

LOCATION MAP



LEGAL DESCRIPTION:
Lot 1, Pentecostal 2nd Addition, Wichita, Sedgwick County, Kansas

BENCHMARK:
BM #1 - Exist. SSMH on site. 37' South from CL of MacArthur and 51' East of Exist. Gravel Drive.
Elevation: 86.30 City Datum (1273.70 MSL)

APPROVED AS NOTED
BY CITY ENGINEER OF WICHITA

Storm Sewers URH 4/11/00

NOTE TO CONTRACTORS

Installation, inspection and testing for this project is to be provided by a Licensed Consulting Engineering Firm under contract with the Owner/Developer. Said inspection to be in accordance with the City of Wichita standard construction engineering practices and certified by a Licensed Professional Engineer. No work shall be performed in dedicated easements or public right-of-way by the Contractor without such inspection nor shall any work be commenced without written authorization by the City Engineer. All Construction and Materials shall comply with the City of Wichita Specifications and Standards (on file and available in the City Engineer's office).



As Built 7/00 KK
BAUGHMAN COMPANY P. A.
ENGINEERING, SURVEYING, & PLANNING

18-2-2-11

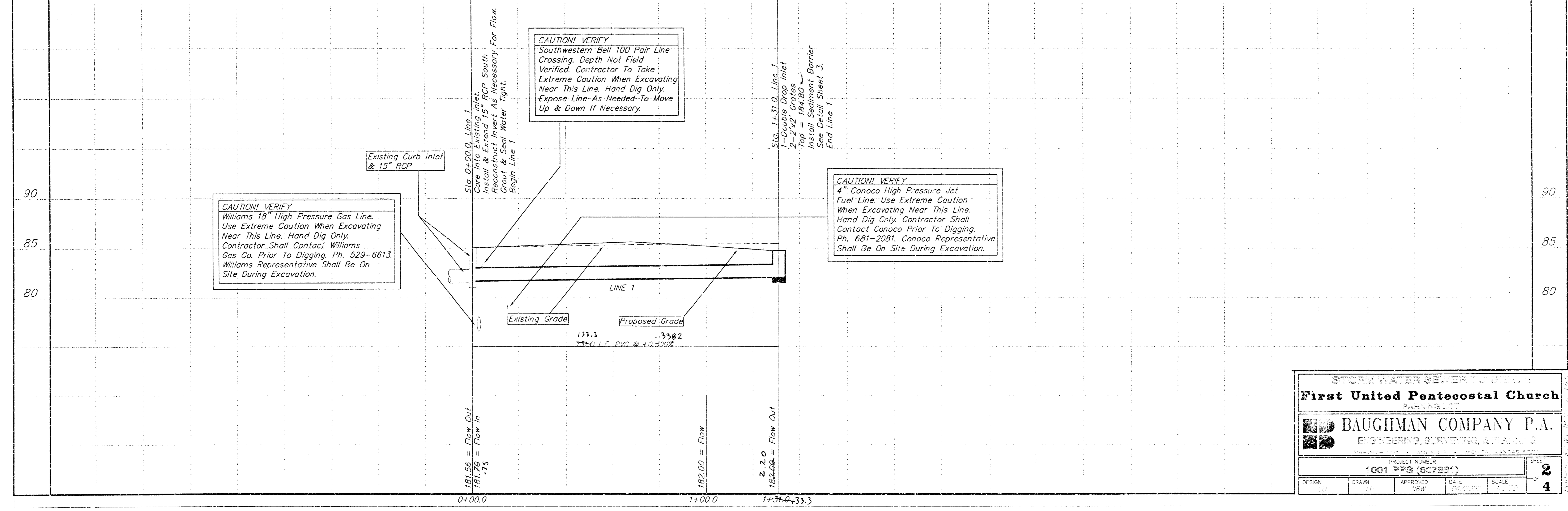
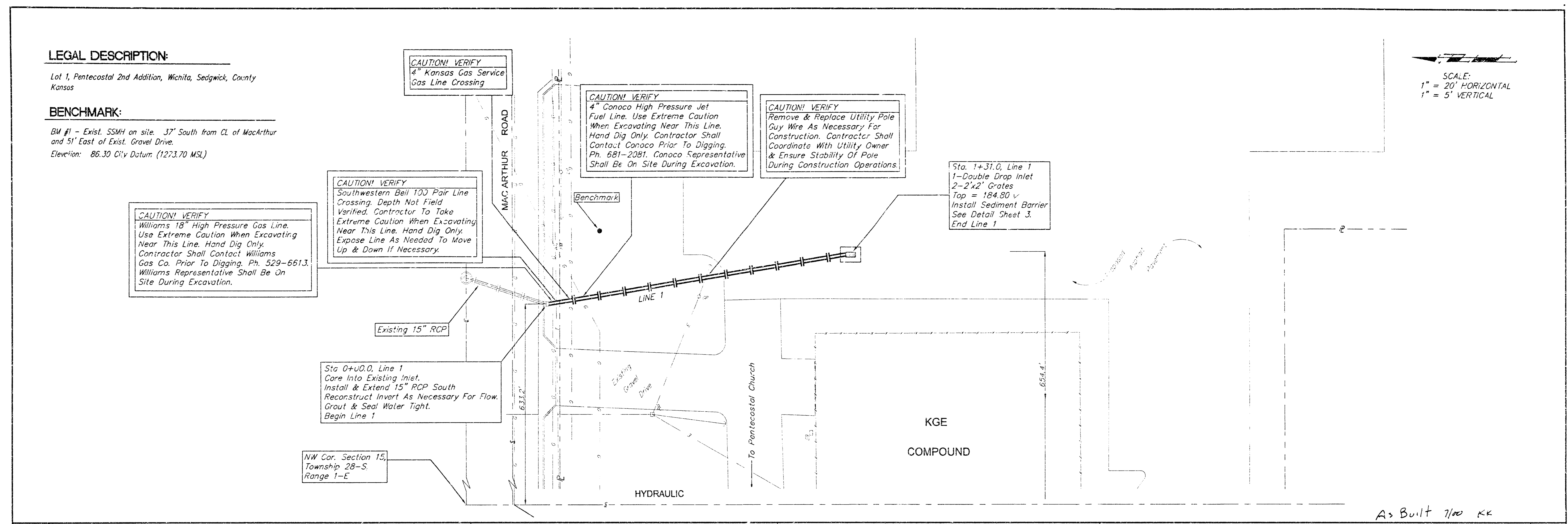
LEGAL DESCRIPTION:

Lot 1, Pentecostal 2nd Addition, Wichita, Sedgwick, County, Kansas

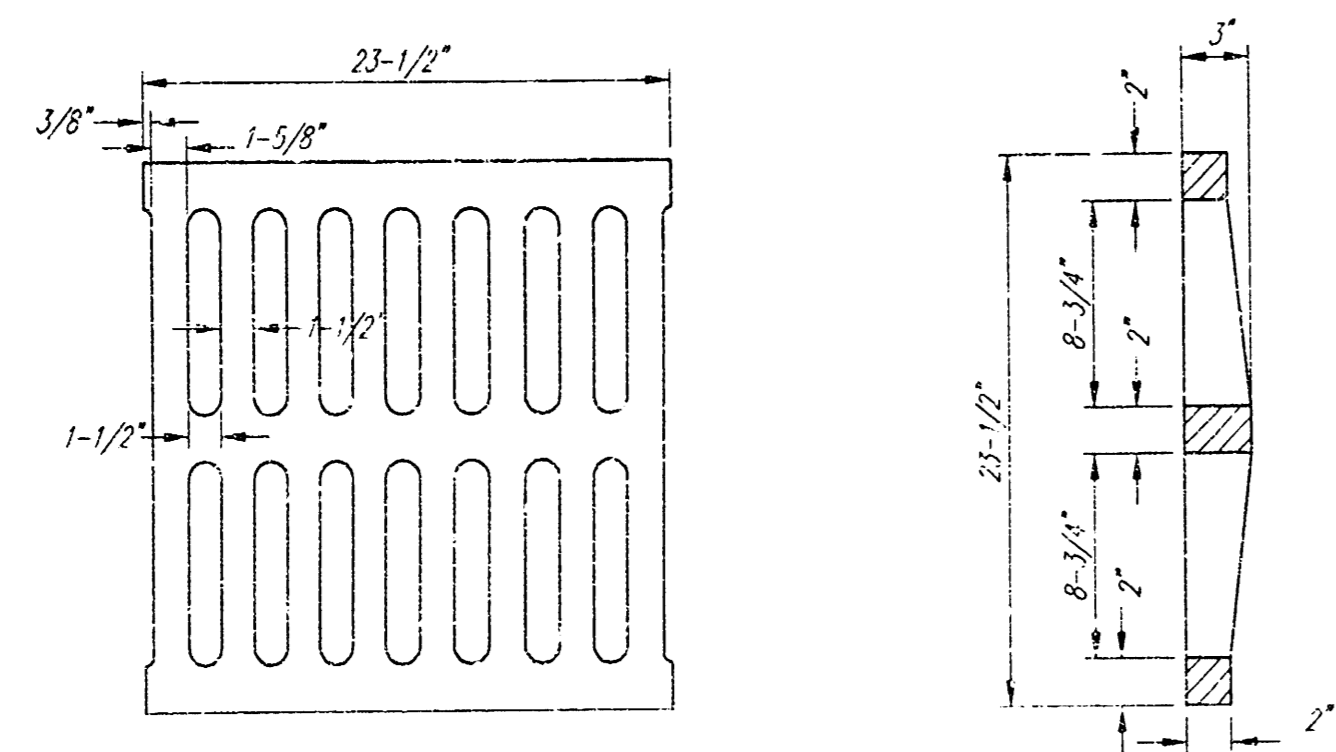
BENCHMARK:

BM #1 - Exist. SSMH on site. 37' South from CL of MacArthur Road and 51' East of Exist. Gravel Drive.
Elevation: 86.30 City Datum (1273.70 MSL)

SCALE:
1" = 20' HORIZONTAL
1" = 5' VERTICAL



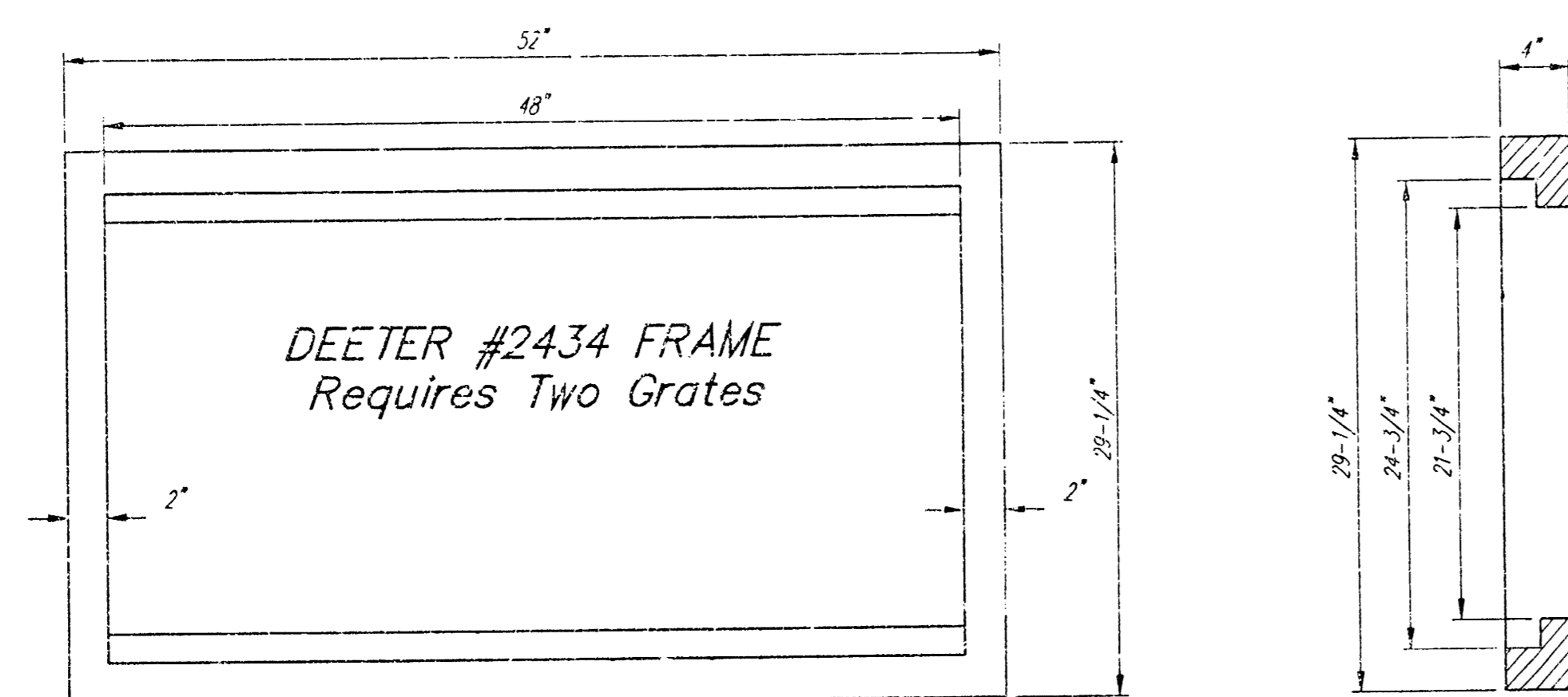
STORM WATER SEWER TO SERVICE
First United Pentecostal Church
 PARKING LOT
BAUGHMAN COMPANY P.A.
 ENGINEERING, SURVEYING, & PLANNING
 PROJECT NUMBER: 1001 PFG (607861)
 SHEET 2 OF 4
 DESIGN: [] DRAWN: [] APPROVED: [] DATE: 04/2007 SCALE: []



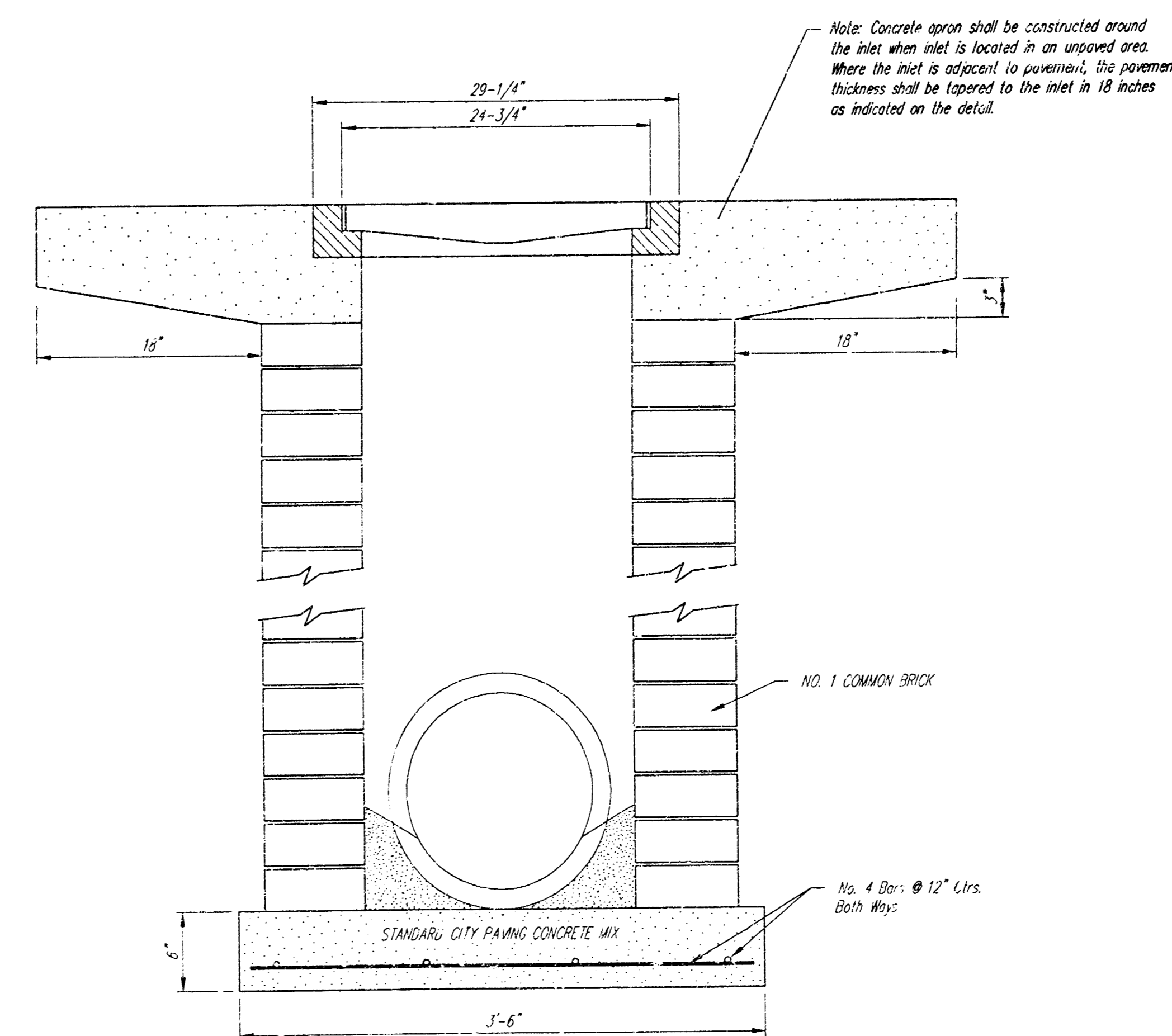
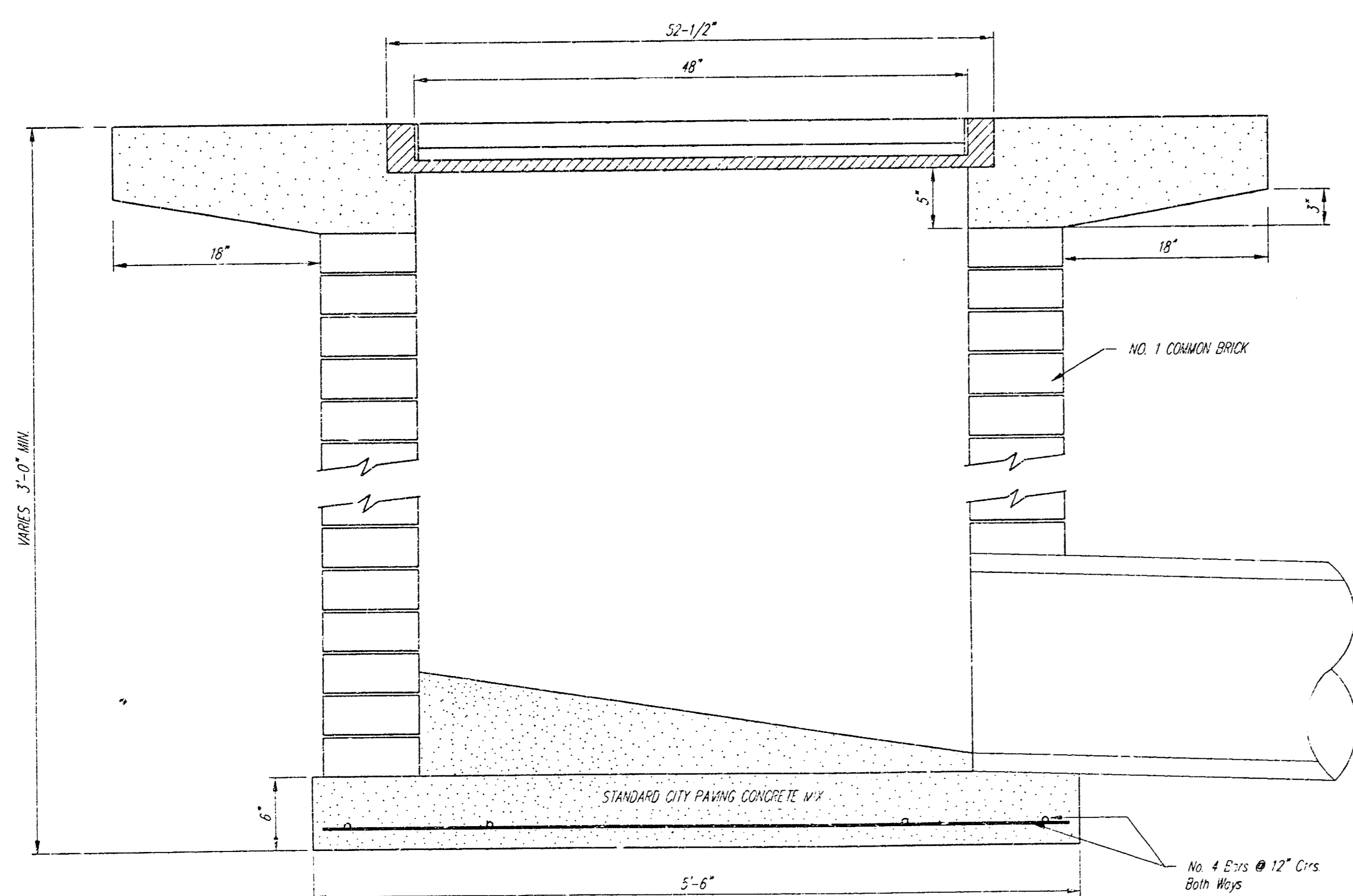
DEETER #2433 GRATE

24" x 24" Frame and Grate Detail

NOTE: Grates shall be imprinted on the top surface with "CITY OF WOHITA" using letters of least 1" in height. Other marking methods may be approved by the engineer.



Double 24" x 24" Frame Detail



NOTES:

Surface of grate must be clean and free of dirt and debris.

Position Verti-Pro squarely on the inlet grate.

Install toggle ball assembly (See Figure 2), the hold down plate must contact both the lower frame flange and grate. The toggle ball must engage two bars on grate. Repeat on opposite sides.

The Verti-Pro has four (4) legs that unfold just like a car's fender (See Figure 3). Rotate legs to upright position on diagonal corners, this will support the upper framework on the Verti-Pro.

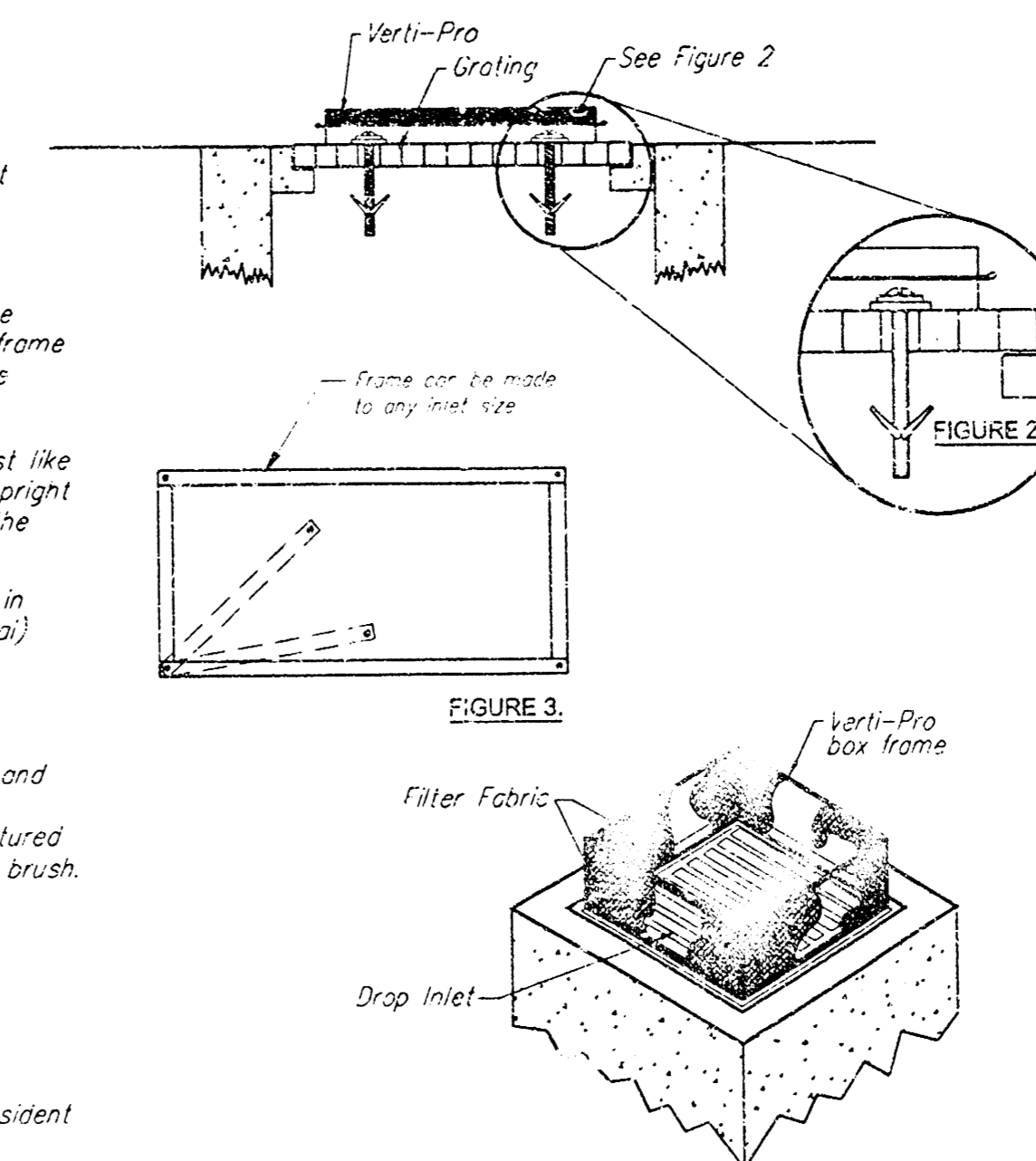
Align holes in each leg with the two (2) holes in upper frame. Insert a plastic retainer (or equal) in each of the holes from the outside in.

MAINTENANCE:

Inspect after each rain event. Remove debris and captured sediment when deposits reach 7" or 1/2 the height of the Verti-Pro. Remove captured debris from the filter fabric with a stiff bristle brush. (Frames are reusable and easy to install).

ORDERING:

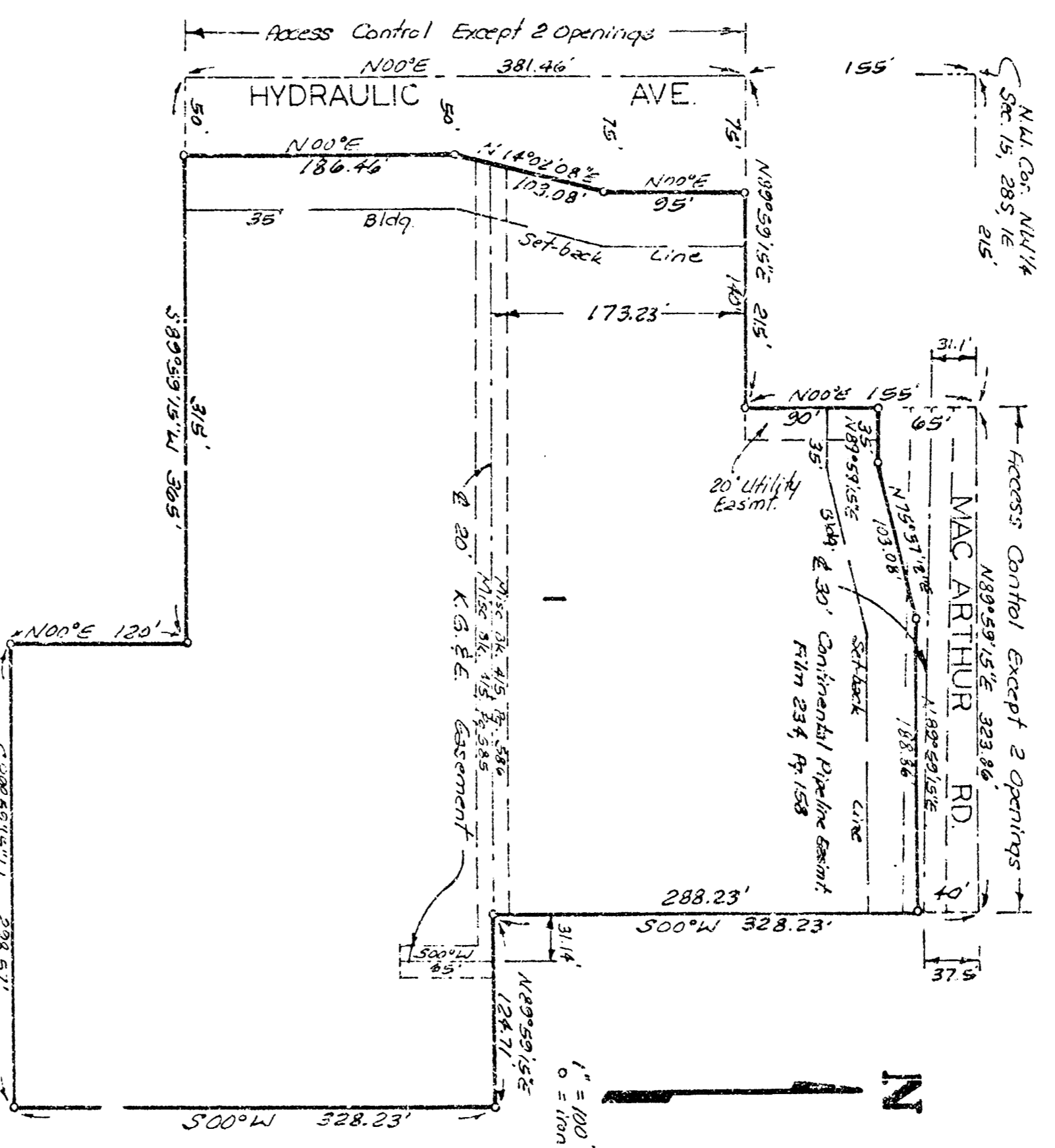
ALPINE STORMWATER MANAGEMENT COMPANY
4127 Broadway, Suite B
Grove City, Ohio 43123
Phone: 608-539-8240, Don Strawn, Sr., President



DROP INLET PROTECTION - The 'Verti-Pro' by Alpine[®]
For Yard and Parking Lot Inlet Usage

Drop Inlet & Sediment Barrier				
DETAIL				
BAUGHMAN COMPANY P.A.				
ENGINEERING, SURVEYING & ARCHITECTURE				
1001 FFB (807831)				
DESIGN	DRAWN	APPROVED	DATE	SCALE
PLM	PLM	NSH	04/2011	AS SHOWN
				SHEET 3 OF 4

PENTECOSTAL 2ND. ADDITION
WICHITA, KANSAS



State of Kansas, ss. W. Baughman Company, P.R., Surveyor in and for said county and state do hereby certify that we have surveyed and plotted "PENTECOSTAL 2ND. ADDITION" Wichita, Kansas, and that the accompanying plat is a true and correct exhibit of the property surveyed, described as the west 10 acres of the north 200 acres of the 6th, P.M., Sedwick County, Kansas, except the south 120 feet of the west 228.23 feet, and except the east 124.71 feet of the west 155 feet and except the west 212 feet of the north 155 feet thereof.

W. Baughman Company, P.R.
William E. Baughman, Surveyor

Know all men by these presents that we, the undersigned, have caused the land described in the foregoing certificate to be divided into a lot and streets to be known as PENTECOSTAL 2ND ADDITION, Wichita, Kansas. The utility easements are hereby granted as indicated for the construction and maintenance of public utilities. The streets are hereby dedicated to and for the use of the public. All abutters rights of access to or from Hydraulic Ave over and across the west line of Lot 1 and to or from MacArthur Rd over and across the north line of Lot 1 are hereby granted to the City of Wichita, Kansas provided however that Lot 1 shall have access to MacArthur Rd at 2 points, and all such shall be determined by the City Engineer of the City of Wichita, Kansas.

David L. Owens
City Engineer



This plat approved and all declarations shown herein accepted by the Board of Commissioners of the City of Wichita, Kansas, this day of _____, 1988.

Mayor
City Clerk

This plat approved and all declarations shown herein accepted by the Board of Commissioners of Sedwick County, Kansas, this day of _____, 1988.

Chairman
Commissioner
Commissioner
County Clerk

State of Kansas, ss. This is to certify that this Sedwick County's Plat has been filed in the office of the Register of Deeds, this day and is duly recorded.

Betty F. Priest, Register of Deeds
Deputy