

**BENCHMARK:**

\*□ Top of Curb 15.7' East of the Southeast corner of Lot 2, Block A, Four H Addition.  
Elevation: 146.22 (City Datum)

**LEGAL DESCRIPTION:**

Lot 2, Block A Four H Addition, Wichita, Sedgewick County, Kansas.

**INDEX:**

Plan/Profile Sheet 1  
Inlet Detail 2  
Copy Of Plat 3

**GENERAL NOTES:**

- Contractor will be required to provide notice to utility companies a minimum of forty-eight (48) hours prior to any excavation, as follows:  
Kansas One-Call 687-2470  
The Contractor must notify the following in case of an emergency:  
Cox Communication 262-4270  
Kansas Gas Service Company 333-8650  
Kansas Gas & Electric Company 381-8650  
Peoples Gas Company 942-7600  
Southwestern Bell Telephone Company 1-571-2511  
City of Wichita Water Department 268-4908  
City of Wichita Sewer Department 268-4071
- Utility service lines, poles, valve boxes, meters, et cetera are to be adjusted as necessary by others prior to construction unless the plans specifically call for their adjustment by the Contractor or unless the plans specifically identify a utility to be adjusted by its owner during construction. Existing utilities and their location, as shown on the plans represent the best information obtainable for design and shall be field verified. The contractor will be required to work around existing utilities within the right-of-way which do not conflict with proposed construction.
- All disturbed areas not intended for pavement or sidewalk construction shall be seeded with Kansas Premium Fescue Blend at a rate of 8 lb./1000 Sq. Ft., fertilized with a 16-20-6 ratio at a rate of 4 lb./1000 Sq. Ft., and mulched with Prairie Hay at a rate of 92 lb./1000 Sq. Ft. Mulch shall be "patted" with forks or punched into soil to reduce loss due to wind.
- Trees and shrubs in public right-of-way which are in direct conflict with proposed new construction shall be removed by the Contractor with the Engineer's approval. Trees and shrubs which are not in direct conflict with proposed new construction shall be saved and protected from damage.
- Contractor shall not start work on the project until the project inspector is assigned to the project and is present on the site. Any work done without inspection will be required to be uncovered for inspection.
- Rubble from the removal of miscellaneous structures and excess excavation which is to be wasted shall be disposed of on sites to be provided by the Contractor. These sites shall be approved by the Engineer as to suitability, appearance and site location. Locations that, in the opinion of the Engineer, will leave an unsightly appearance will not be approved. All disposal sites must be approved by the Kansas Department of Health and Environment. Material either stockpiled or disposed of in a flood plain would require a Kansas State Board of Agriculture permit. Any material dumped in waters of the United States or wetlands is subject to U.S. Corps of Engineers permitting regulations. Any material buried or stockpiled beyond approved construction limits would require additional archaeological investigations unless buried in a previously approved borrow location.
- Cuts made to paved surfaces on public property will be repaired by the City's contractor and charged against the owner/applicant. Unit repair prices are available from the City at 268-4418. A surcharge may be applicable; call 268-4418 for details. Repair costs to be paid prior to release of sewer service if sewer service is affected. Contractor shall obtain permit prior to construction.

**STORM WATER SEWER IMPROVEMENTS**

to serve

**Four H Addition**

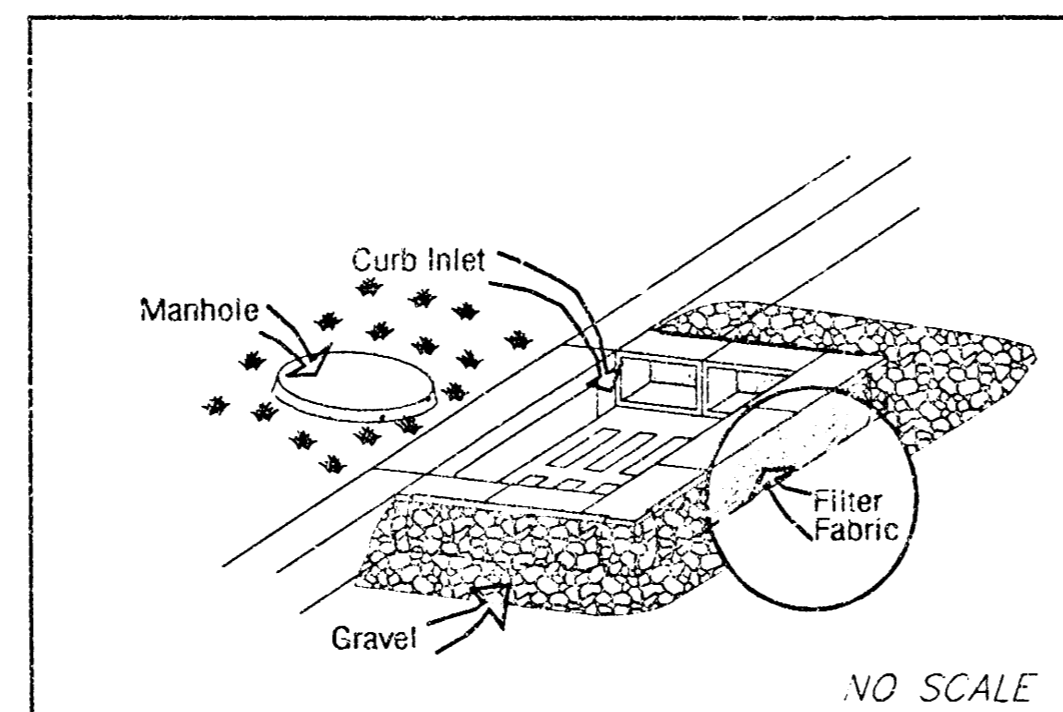
**Lot 2, Blk. A**

**CITY OF WICHITA, KANSAS**

Michael E. Lindebak, P.E. City Engineer

Private Project Number

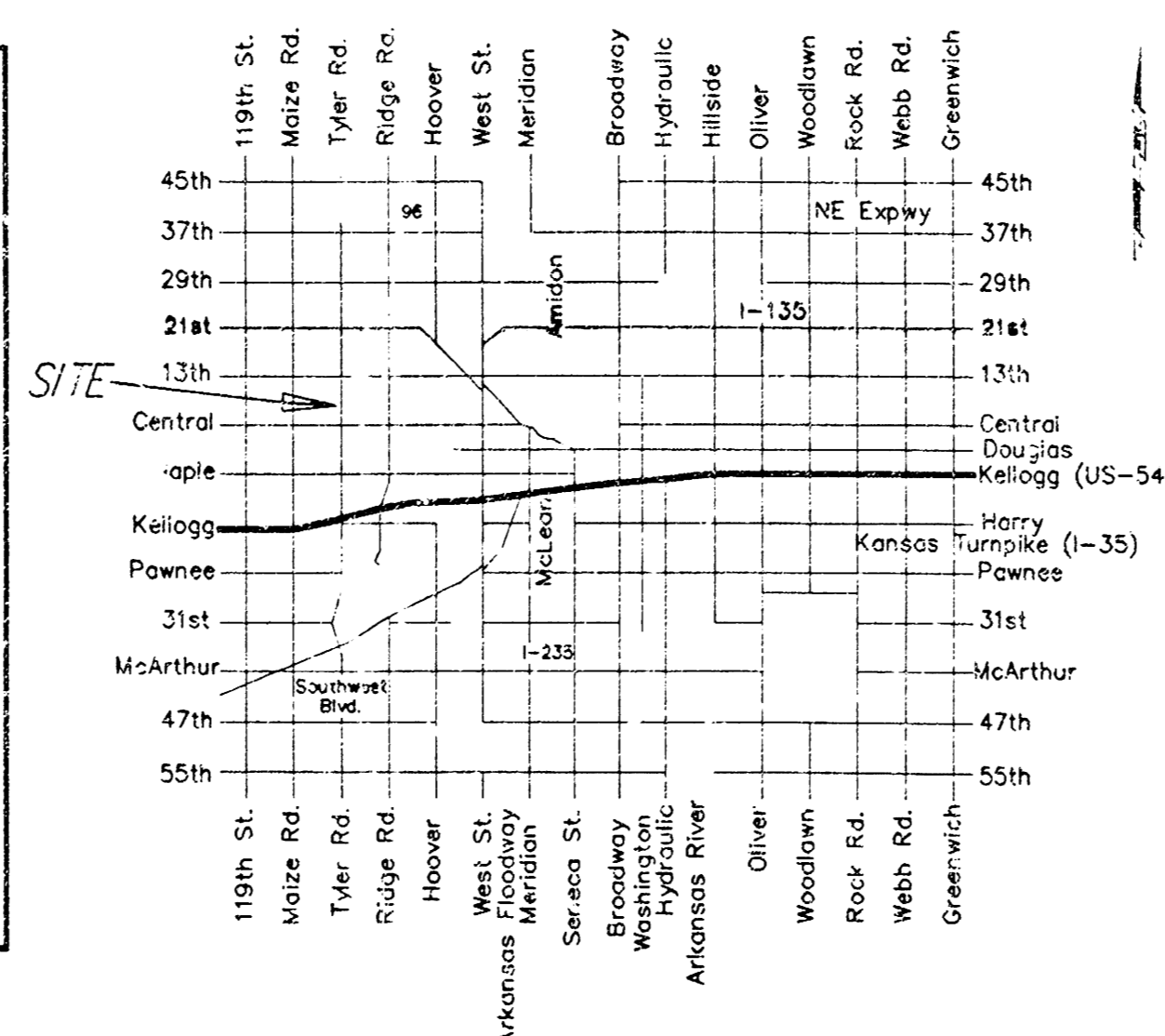
**1016 PPS (607861)**



**NOTES:**  
Frequent maintenance is required to remove sediment deposits and buildup.  
Wrap filter fabric around all CMU block and backfill with 2"-3" gravel rock to allow sediment deposits.  
DO NOT cover inlet or grate with filter fabric.

**CURB INLET w/GRATE  
SEDIMENT BARRIER DETAIL**

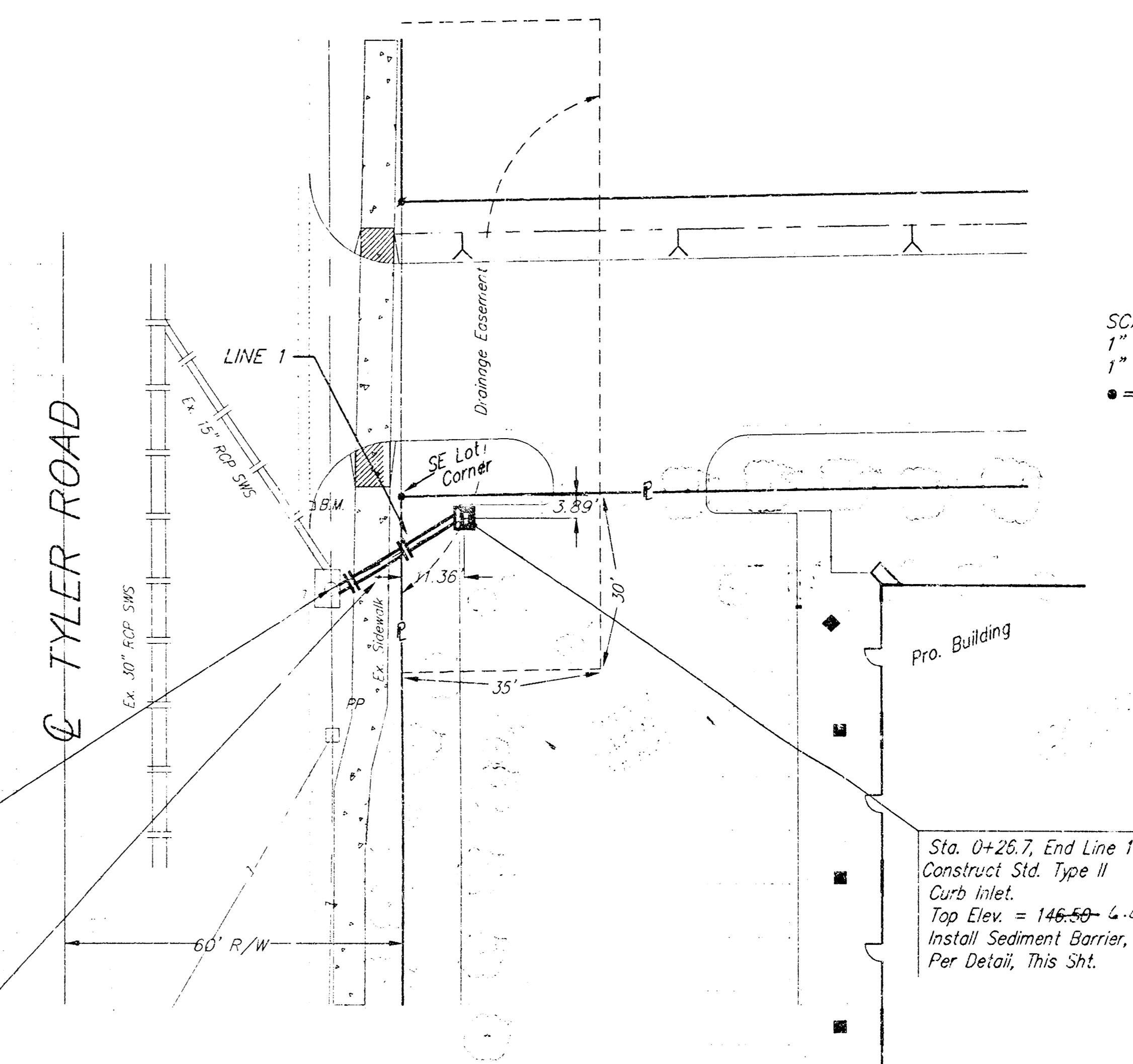
**Vicinity Map**



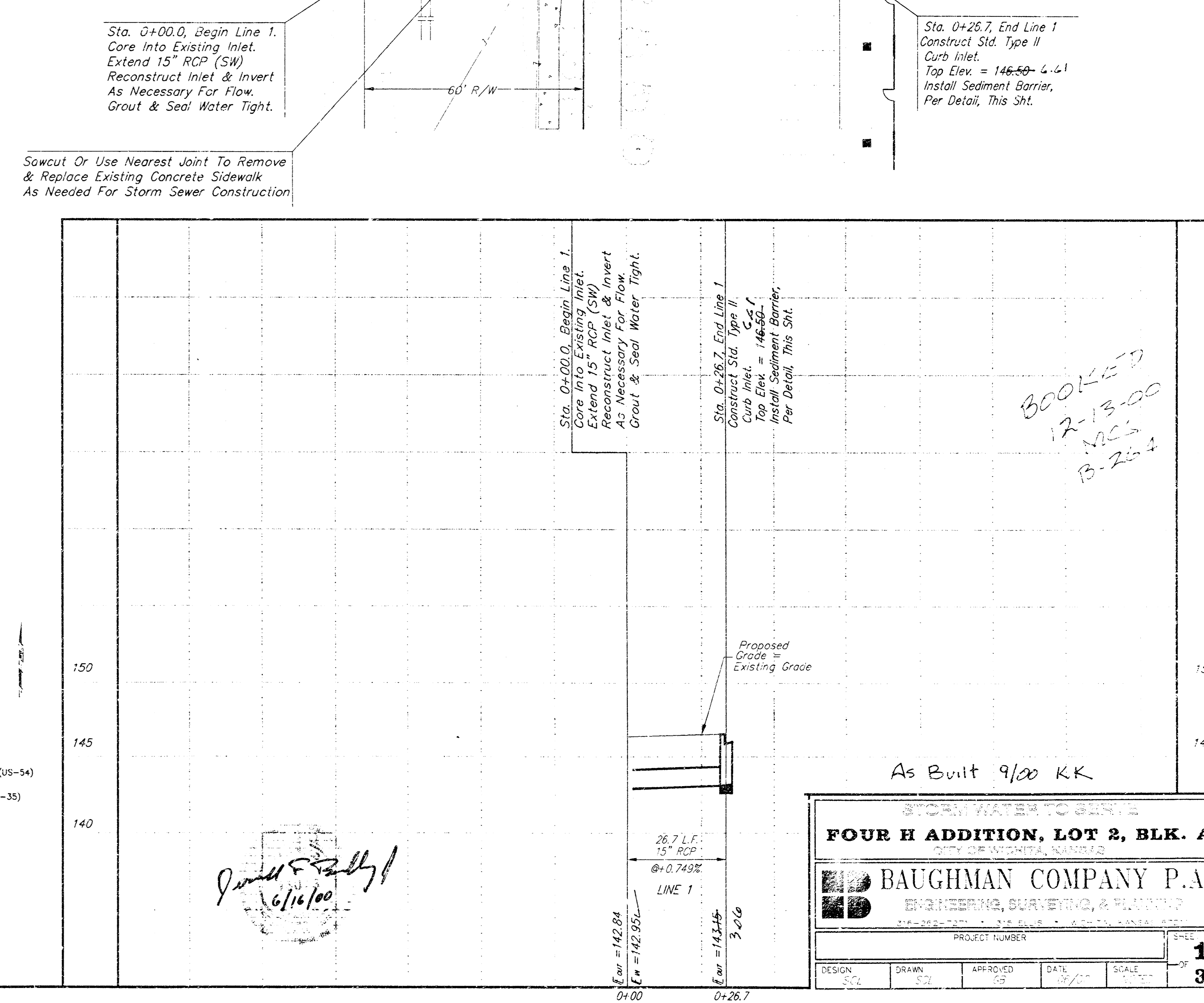
**APPROVED AS NOTED  
BY CITY ENGINEER OF WICHITA**

Storm Sewers VRH 6/16/00

**NOTE TO CONTRACTORS**  
Inspection and testing for this project is to be provided by a Licensed Consulting Engineering Firm under contract with the Owner/Developer. Said inspection to be in accordance with the City of Wichita standard construction engineering practices and certified by a Licensed Professional Engineer. No work shall be performed in dedicated easements or public right-of-way by the Contractor without such inspection nor shall any work be commenced without written authorization by the City Engineer. All Construction and Materials shall comply with the City of Wichita Specifications and Standards (on file and available in the City Engineer's Office).



SCALE:  
1" = 20' HORIZONTAL  
1" = 5' VERTICAL  
● = Iron



BOOKED  
12-13-00  
MCS  
B-224

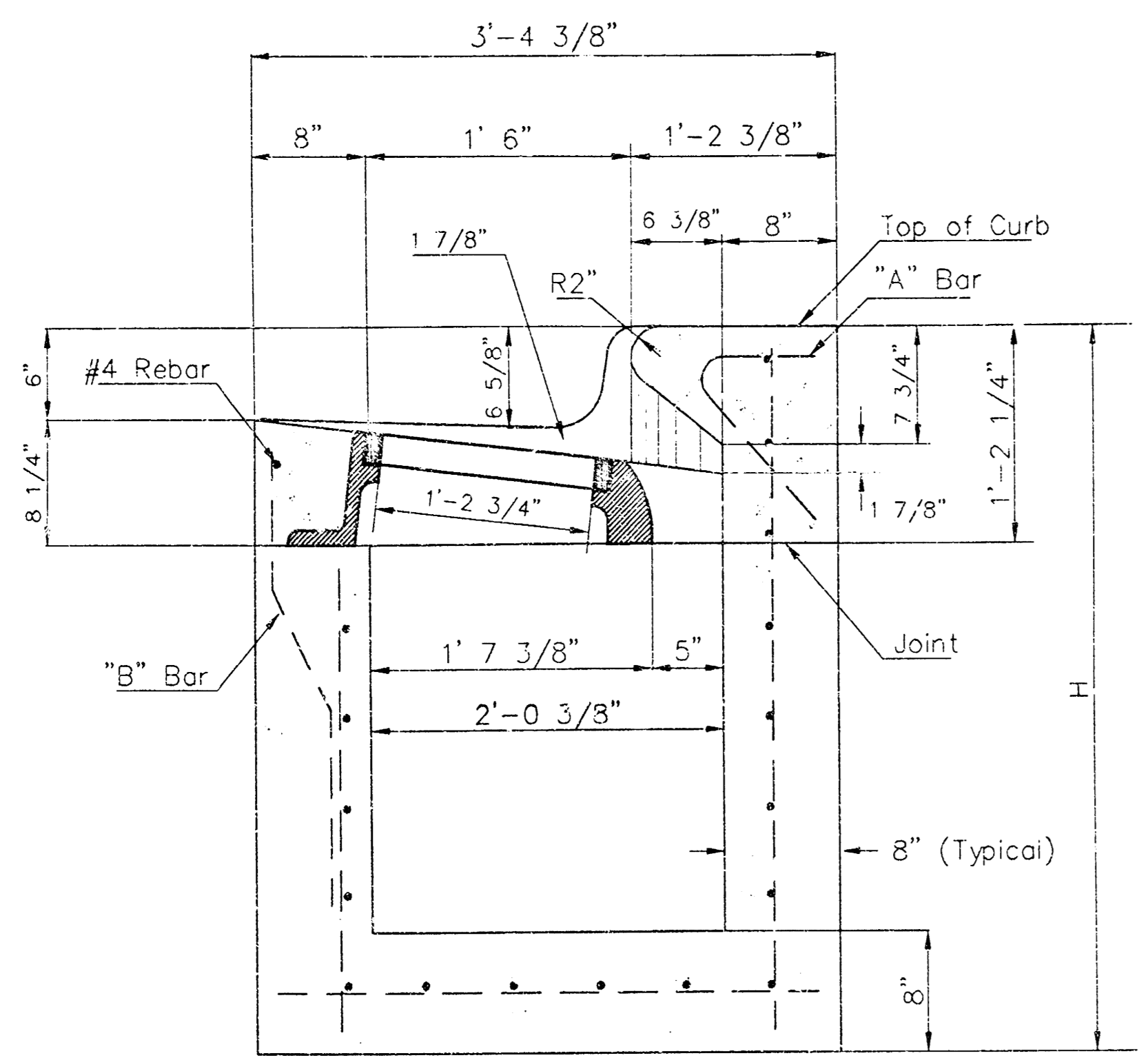
*James F. Kelly*  
6/16/00

As Built 9/00 KK

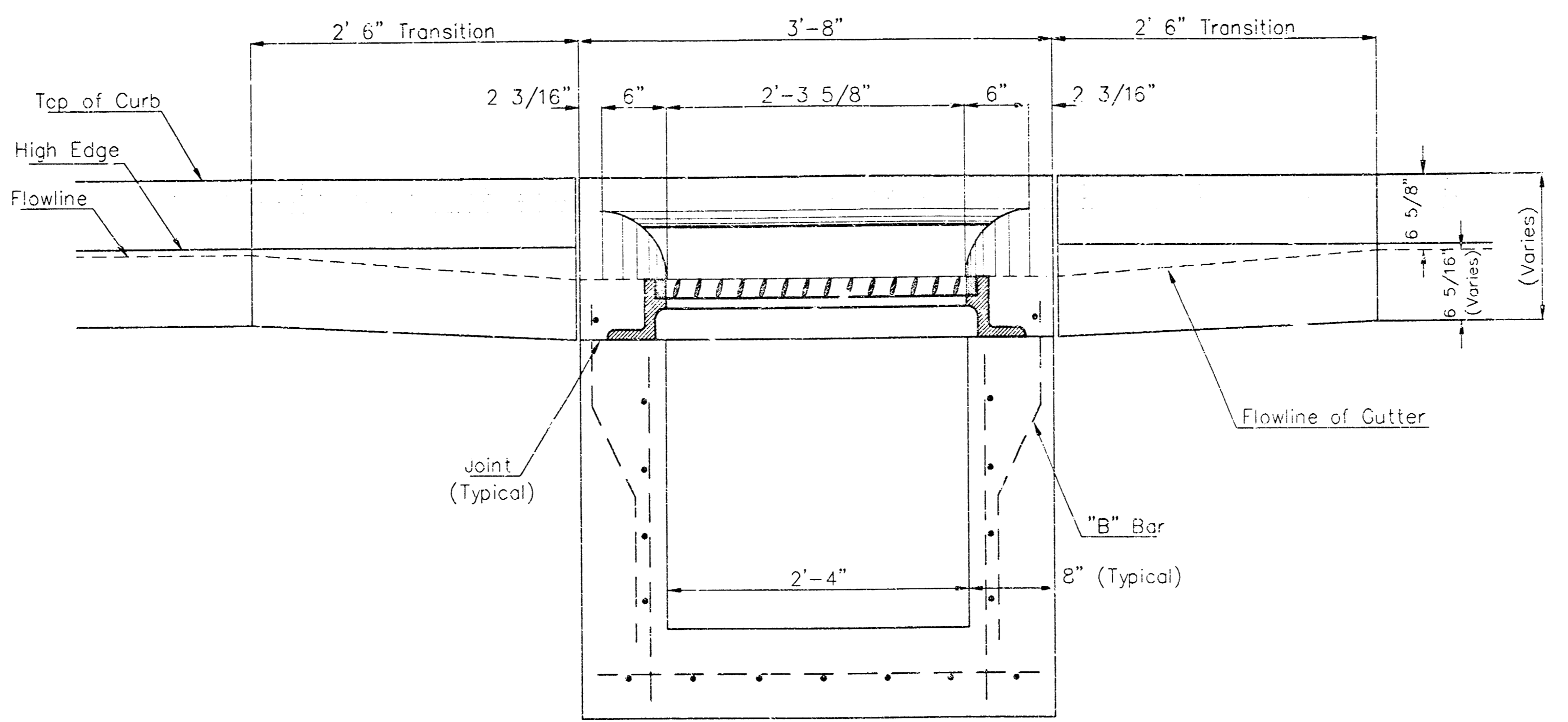
**STORM WATER TO SURFACE  
FOUR H ADDITION, LOT 2, BLK. A**  
CITY OF WICHITA, KANSAS

**BAUGHMAN COMPANY P.A.**  
ENGINEERING, SURVEYING, & PLANNING

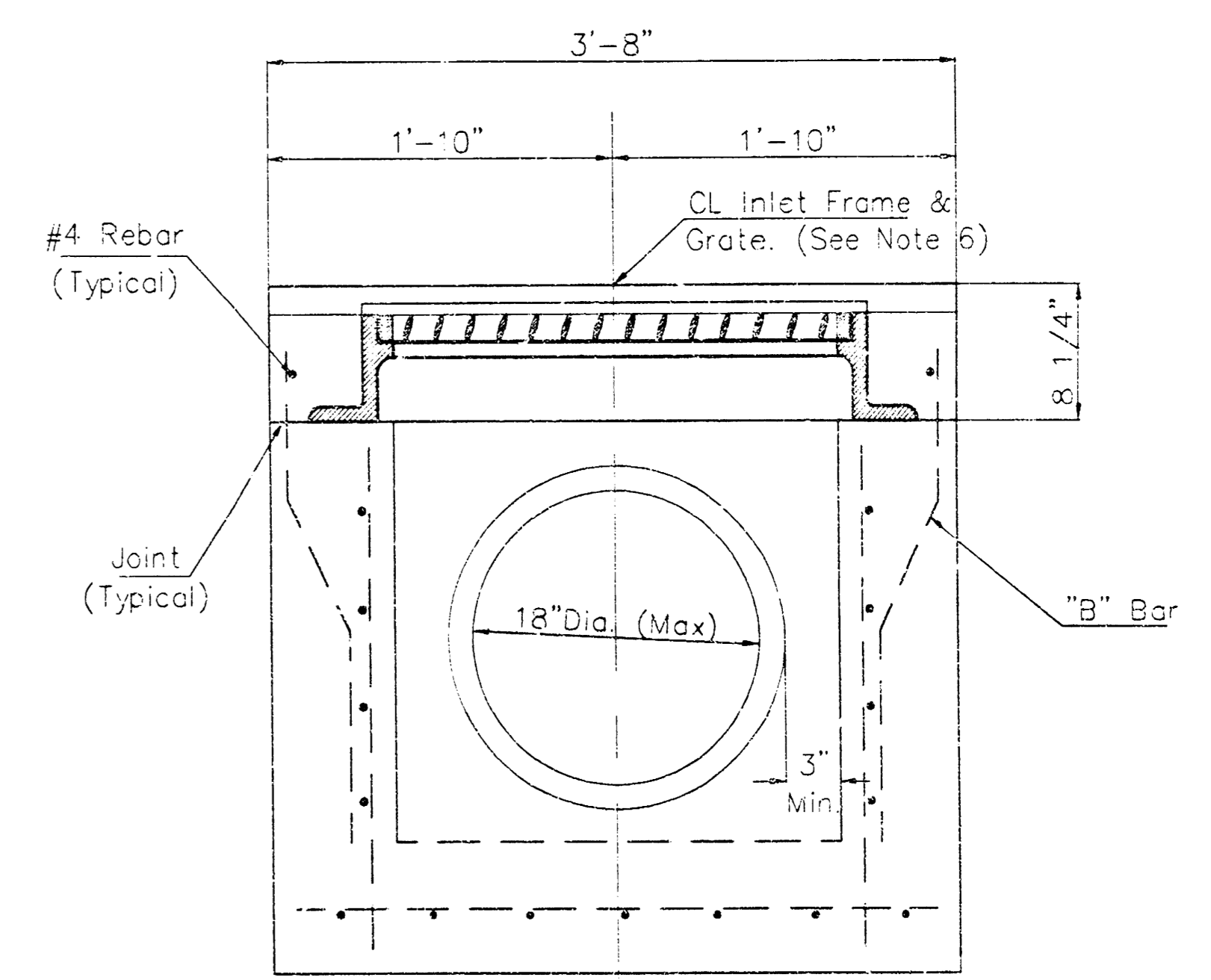
DESIGN: <u>SS</u>	DRAWN: <u>SZ</u>	APPROVED: <u>CS</u>	DATE: <u>6/16/00</u>	SCALE: <u>1"=20'</u>
PROJECT NUMBER				<b>1</b>
				<b>3</b>



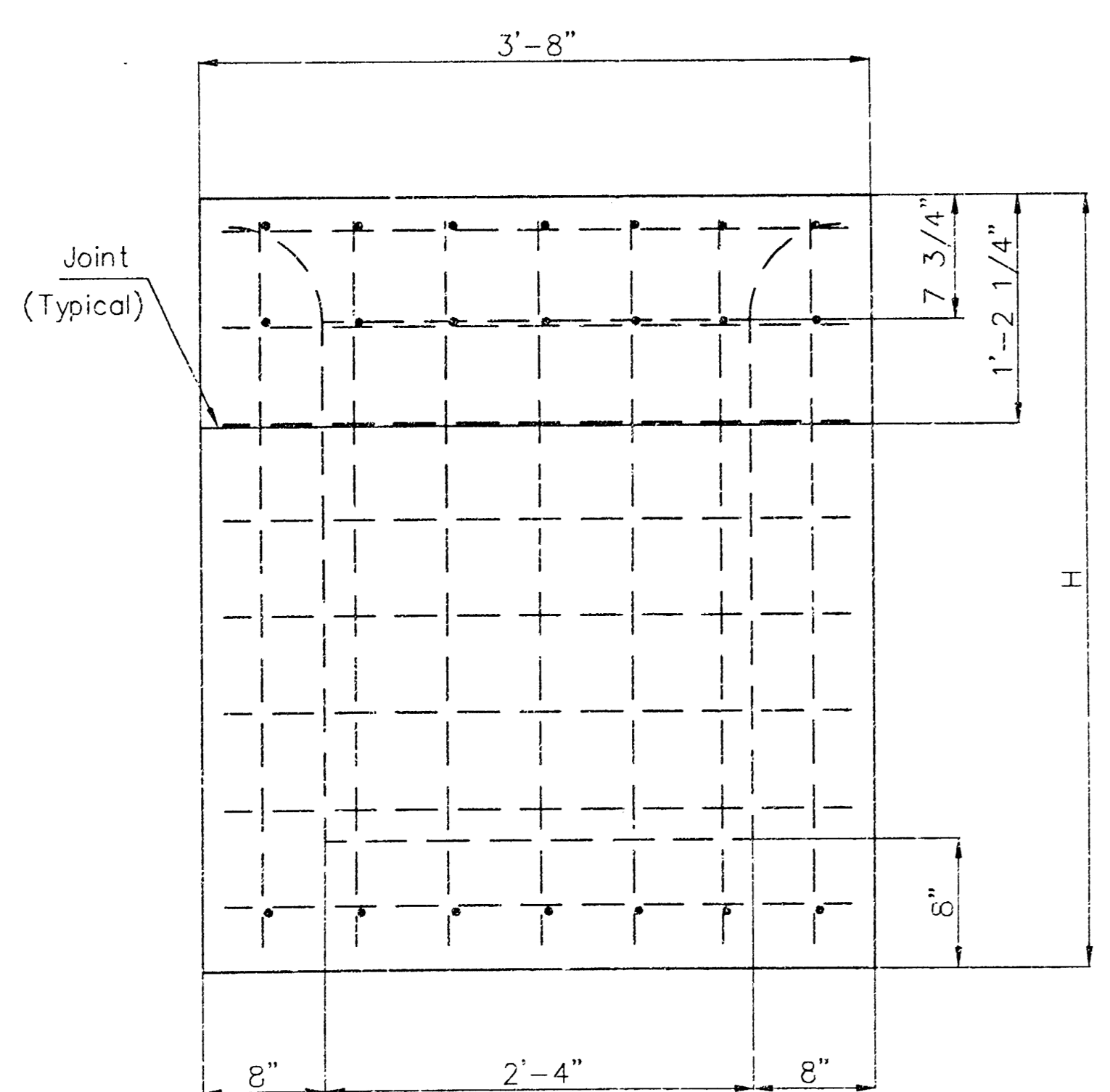
SECTION A-A



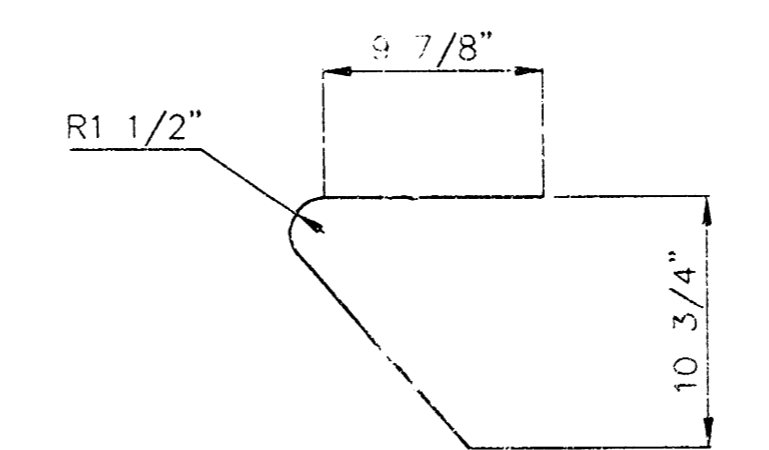
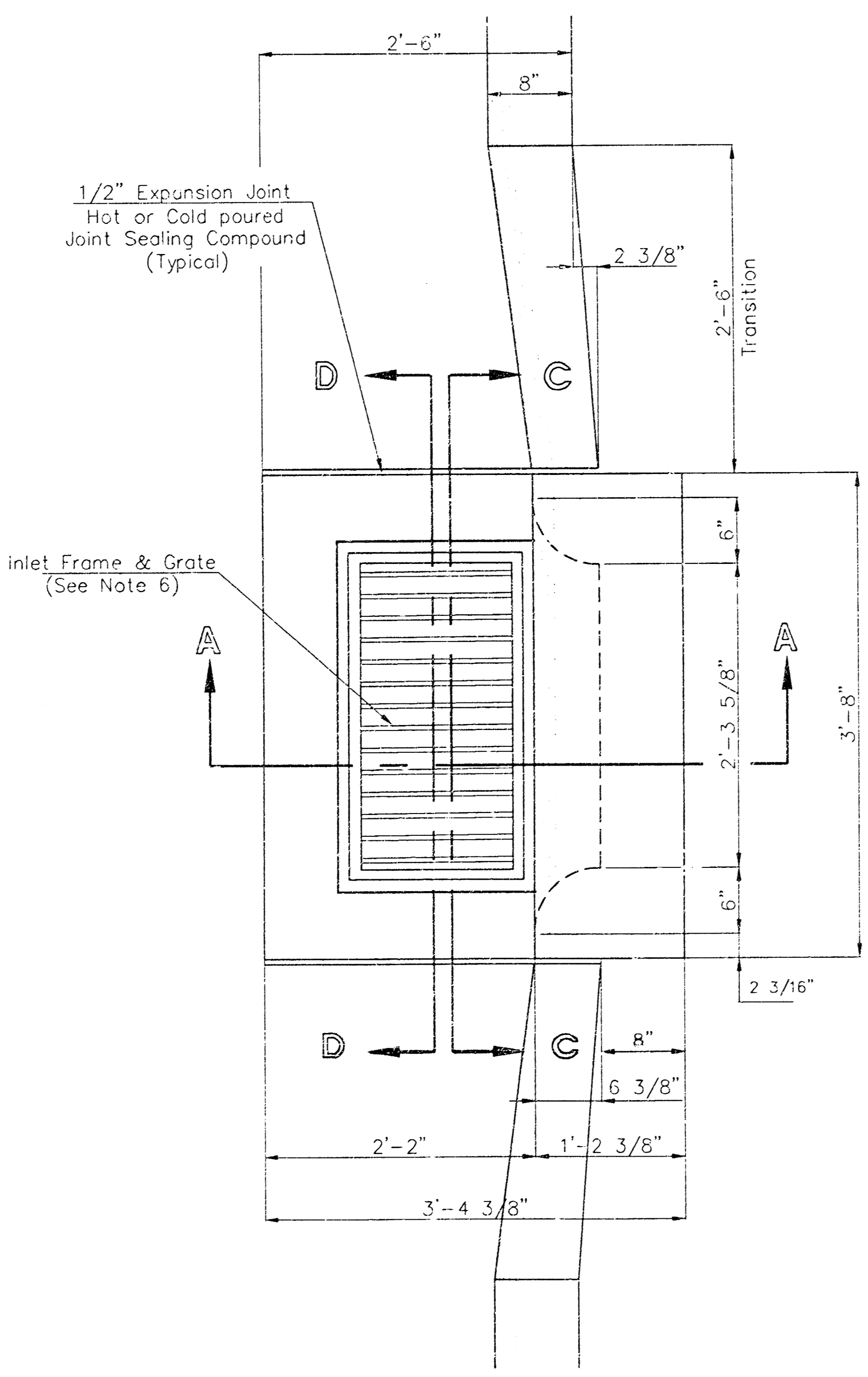
SECTION C-C



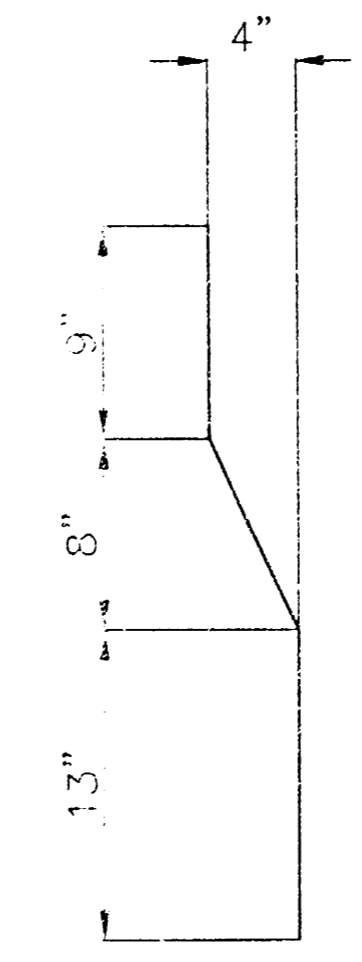
SECTION D-D



REAR WALL



"A" Bar



"B" Bar

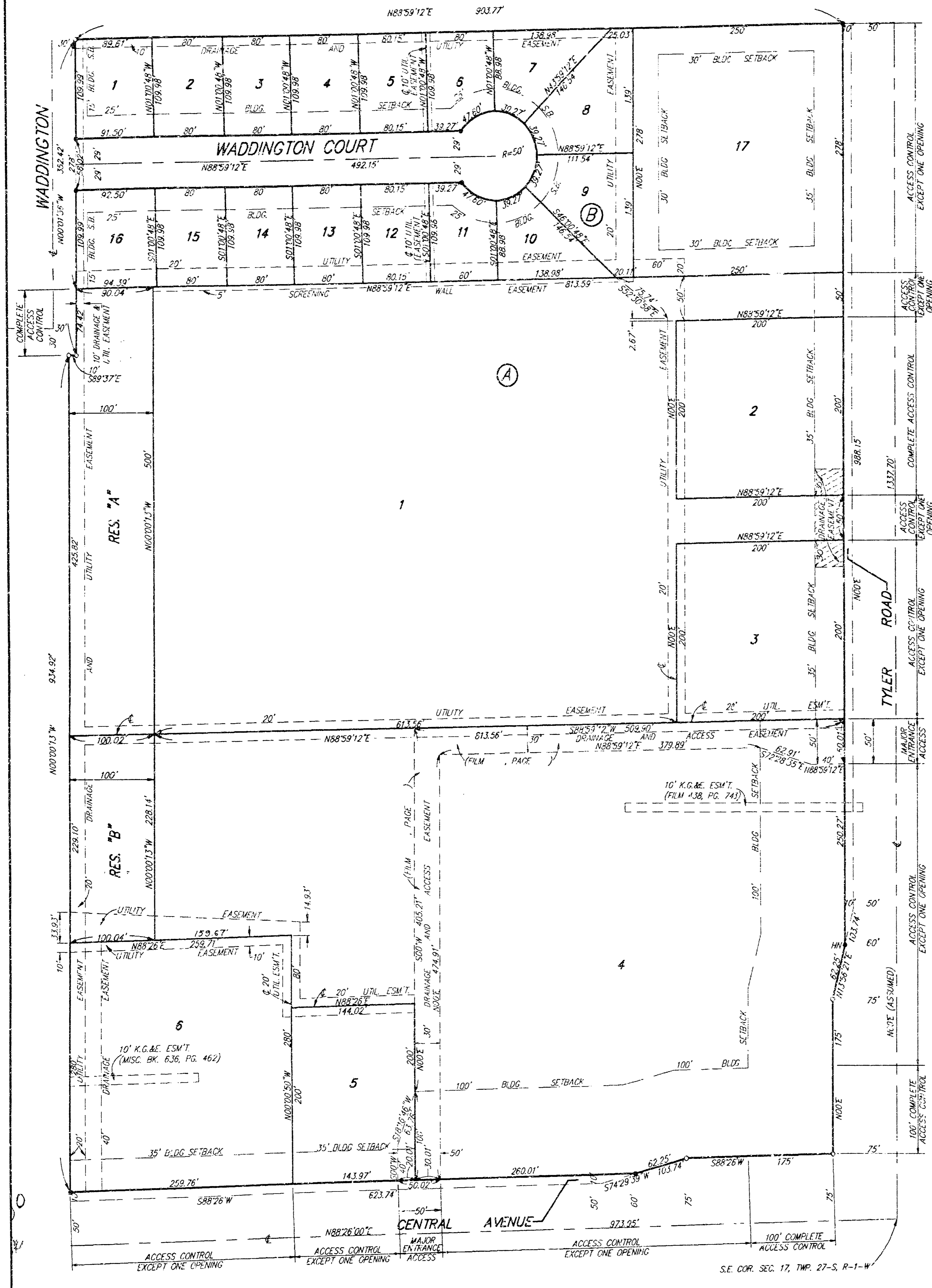
General Notes

1. Use the concrete mix specified for the City of Wichita concrete pavement throughout. All exposed edges shall be finished with an edging tool. Reinforcing bars shall be bent around pipe.
2. Inlet invert shall be shaped with 8 sack mix concrete to create flow channels and to increase hydraulic efficiency such that the inlet will be self cleaning between all inlet and/or outlet pipes.
3. All bars are #4 with 6" spacing and shall have a minimum clearance of 1 1/2" inches unless otherwise noted on the plans.
4. When directed by the Engineer, a small opening may be required in the back of the inlet in order to drain a low area. Reinforcing bars will extend through the openings. No deductions in concrete quantities will be made for these openings.
5. No deductions will be made in pay length of curb, gutter, or curb and gutter through the inlet area.
6. Use Neenah R-3289 HV Single Inlet Frame and Grate or approved equal. Inlet frame to be proof load tested to 40,000 lbs. on unsupported side.
7. Reinforcing bars shall be cut or bent around pipes. No deduction in concrete quantities shall be made for pipe openings.
8. The vanes of the grate shall be oriented with respect to the flow arrows shown on the plans.

Redrawn Jan. 1992

<b>CITY OF WICHITA</b>			
<b>STD. TYPE II CURB INLET</b>			
<small>INLET DEPTH 28" - 30" x 30"</small>			
<b>BAUGHMAN COMPANY P.A.</b>			
<small>ENGINEERING, SURVEYING, &amp; PLANNING</small>			
<small>116-262-1221 • 315 ELLIS • WICHITA, KANSAS 67202</small>			
PROJECT NUMBER		SHEET	
1016 PPS (907881)		2	
DESIGN	DRAWN	APPROVED	DATE
	1/1997		None
		SCALE	
		None	

WICHITA, SEDGWICK COUNTY, KANSAS  
**FOUR H ADDITION**

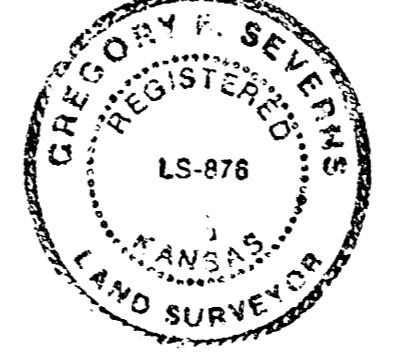


Sedgwick County) We, Baughman Company, P.A., Surveyors in  
 aforesaid county and state do hereby certify that we have surveyed  
 and platted "FOUR H ADDITION", Wichita, Sedgwick County, Kansas  
 and that the accompanying plat is a true and correct exhibit of the  
 property surveyed, described as and being a replat of the following:  
 All of Lot 1, 4-H Club Addition, Wichita, Sedgwick County, Kansas and  
 all of Lot 1, 4-H Club 2nd Addition, Wichita, Sedgwick County, Kansas.

All being situated in the SE1/4 of Sec. 17, Twp. 27-S, R-1-W of  
 the 6th P.M., Sedgwick County, Kansas.  
 Existing public easements and dedications being vacated by  
 virtue of KSA 12-512(b).

Baughman Company, P.A.

Date 3/3/93



Gregory F. Severns Surveyor  
 Gregory F. Severns

Know all men by these presents that we,  
 the undersigned, have caused the land described in the surveyors  
 certificate to be platted into lots, blocks, streets and reserves to be  
 known as "FOUR H ADDITION", Wichita, Sedgwick County, Kansas.  
 Reserve "A" and Reserve "B" are hereby reserved for landscaping,  
 open space, screen wall construction, and drainage purposes.  
 Reserve "A" shall be owned and maintained by the owner of Lot 1.  
 Reserve "B" shall be owned and maintained by the owner of Lot 4.  
 The streets are hereby dedicated to and for the use of the public. The  
 utility easements are hereby granted as indicated for the construction and  
 maintenance of all public utilities. The drainage easements are hereby  
 granted as indicated for drainage purposes. The drainage and utility easements  
 are hereby granted as indicated for drainage purposes and for the  
 construction and maintenance of all public utilities. The access and  
 drainage easements are hereby granted for access purposes and for  
 drainage purposes. The screening wall easement is hereby granted  
 as indicated for screening purposes. Access controls as depicted  
 on the face of the plat are hereby granted to the City of Wichita,  
 Kansas. The permitted entrance locations shall be as determined  
 by the City Engineer of the City of Wichita, Kansas. Building Setback  
 Lines within Block "A" as per Four H Community Unit Plan, DP-209.

T V Realty, L. L. C.

Stephen J. Wardis Manager  
 Stephen J. Wardis

State of Kansas) SS The foregoing instrument acknowledged be-  
 fore me, this 7th day of March, 1993, by Stephen J. Wardis,  
 Manager of T V Realty, L. L. C., on behalf of the Company.

My App't. Exp. 2-3-95  
Mildred E. Franz Notary Public  
 MILDRED E. FRANZ  
 NOTARY PUBLIC  
 STATE OF KANSAS

We, the undersigned, holders of a mortgage  
 on the above described property do hereby consent to this plat of  
 "FOUR H ADDITION", an Addition to Wichita, Sedgwick County, Kansas.

Bank IV  
Tim McGuigan Vice President  
 Tim McGuigan

State of Kansas) SS The foregoing instrument acknowledged be-  
 fore me this 4th day of March, 1993, by Tim McGuigan,  
 Vice President of Bank IV, on behalf of the bank.

My App't. Exp. 1/1/96  
Barbara S. Brewer Notary Public  
 BARBARA S. BREWER  
 NOTARY PUBLIC  
 STATE OF KANSAS

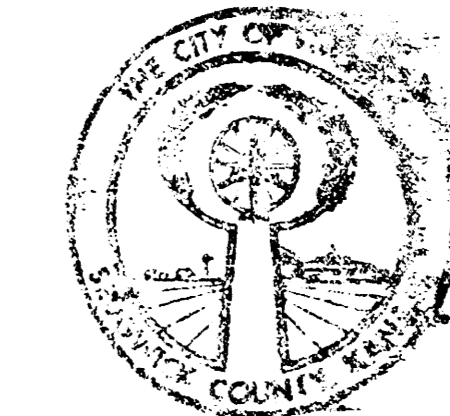
Sedgwick County, Kansas, has been submitted to and approved by  
 the Wichita-Sedgwick County Metropolitan Area Planning Commission,  
 Wichita, Kansas.  
 Dated this 25th day of February, 1993  
 Wichita-Sedgwick County Metropolitan Area Planning Commission.



L. O. Breckenkridge, Jr. Chairman  
 L. O. Breckenkridge, Jr.

Marvin S. Kraut Secretary  
 Marvin S. Kraut

This plat approved and all dedications  
 shown hereon accepted by the City Council of the City of Wichita,  
 Kansas, this 23rd day of March, 1993.



Frank W. Ujile Mayor  
 Frank W. Ujile

Pat Burnett Deputy City Clerk  
 Pat Burnett

Entered on transfer record this 1st day  
 of April, 1993.



Susan E. Crockett-Spoon County Clerk  
 Susan E. Crockett-Spoon

#1279652

State of Kansas) SS This is to certify that this plat has been  
 filed for record in the office of the Register of Deeds, this 1st day  
 of APRIL, 1993, at 11:00 o'clock A.M. and is duly  
 recorded.

Pat Kettler Register of Deeds  
 Pat Kettler

Page 3 of 3

