

STORMWATER SEWER IMPROVEMENTS TO SERVE

BOMBARDIER LEARJET

Project Number
1020 PPS (607861)

CITY OF WICHITA, KANSAS
Michael E. Lindebak, P. E., City Engineer

BENCHMARK:

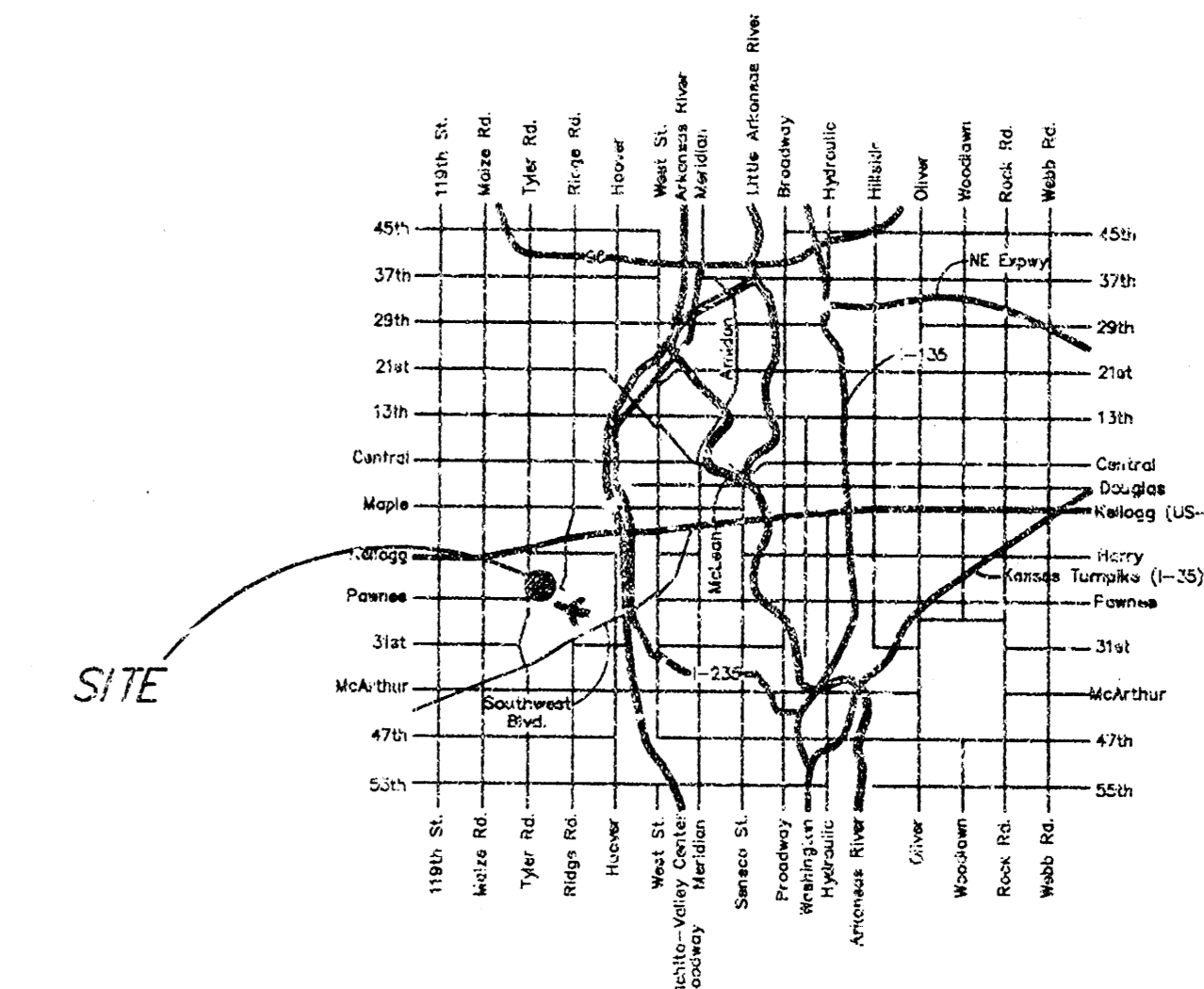
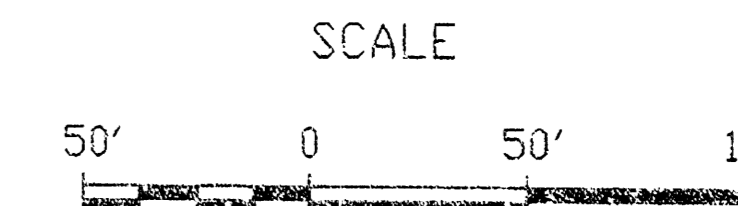
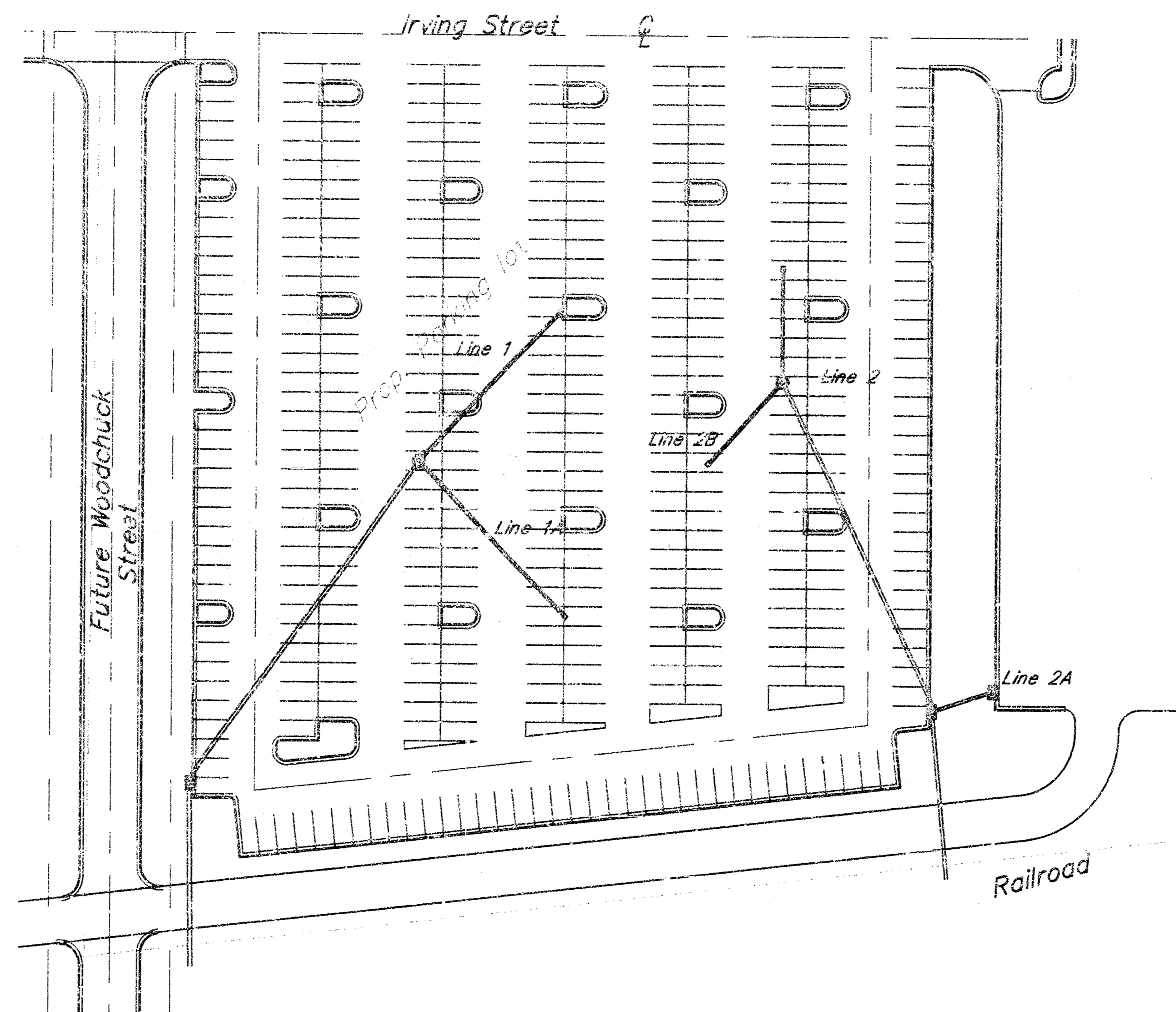
C.O.W. Disc @ SW Corner intersection of Woodchuck and Kellogg Dr. 27' West and 150' S. of Center Line Both 5.5' E. of Chain link Fence Corner And 4' SSW of PP. Elev.=1327.91 City Datum 1327.31 M.S.L.

GENERAL NOTES

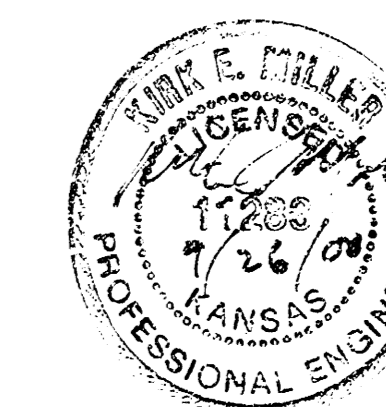
- Contractor will be required to provide notice to utility companies a minimum of twenty-four (24) hours prior to any excavation, as follows:
Kansas One-Call 687-2470
The Contractor must notify the following in case of an emergency:
Cablevision 262-4270
or 263-2061
K.P.L. Gas Service Company 383-6650
Kansas Gas & Electric Company 383-3500
Peoples Natural Gas Gas 942-8811
or 1800-303-0357
Southwestern Bell Telephone Company 1-571-2611
City of Wichita Water Department 268-4908
City of Wichita Sewer Department 268-4071
Kansas Gas Service 832-3168
or 832-3167
- Exist utilities and their locations, as shown on the plans, represent the best information obtainable for design. Location information has been obtained from the various utility companies and is either from company record drawings or company-provided field locations. The Contractor will be required to work around existing utilities which do not conflict with proposed construction.
- The Contractor to verify utility locations prior to construction of this project.
- Utility service and installation shall be coordinated with the respective utility owners. Contacts are:
Kansas Gas Service Jim Stoltz 832-3122
K.G.E. Russ Chitwood 261-6251
Wichita Water Paul Bryant 268-4555
Bill Perkins 268-4908
Southwestern Bell Gary Sharpe 268-2759
- All areas disturbed by construction shall be seeded with rye Rebel II Fescure grass at a rate of 350 lbs./acre immediately following construction in that area.
- Traffic affected by the construction of this project shall be handled in accordance with the latest edition of the Manual on Uniform Traffic Control Devices.
- All lawn/turf areas disturbed by construction of proposed improvements shall be restored with the same grass/sod as existing. Restoration of disturbed areas shall include, but not be limited to, top soil preparation, seeding, mulch and/or reseeding. All seeding/sodding work shall be in accordance with the City of Wichita standard specifications and the City of Wichita administrative regulation No. AR78 which governs cleanup and replacement following construction. All costs for this work shall be subsidiary to the lump sum price bid for "Site Restoration."

INDEX

- Cover
- Plan and Profile
- Plan and Profile
- 5' Type 1 Curb Inlet
- 2'x2' Drop Inlet
- Erosion
- Erosion Detail



LOCATION MAP

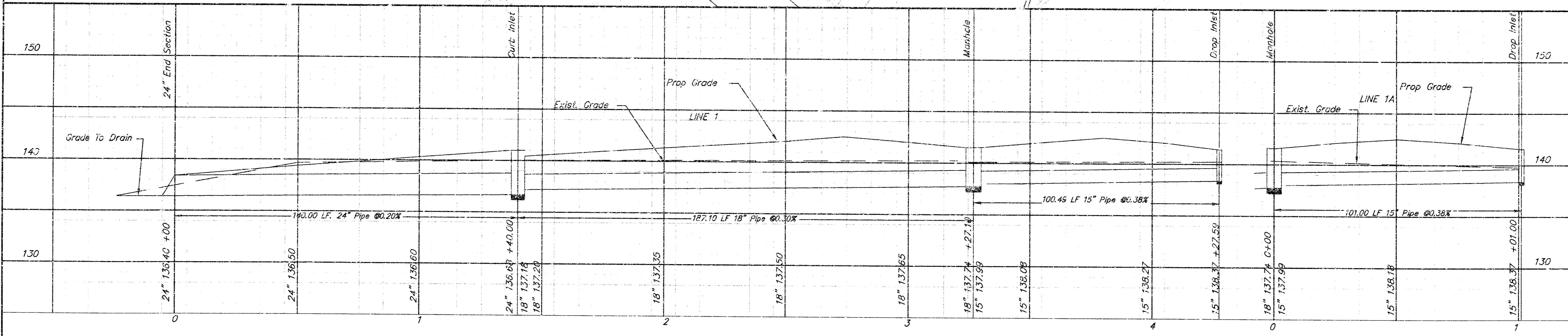
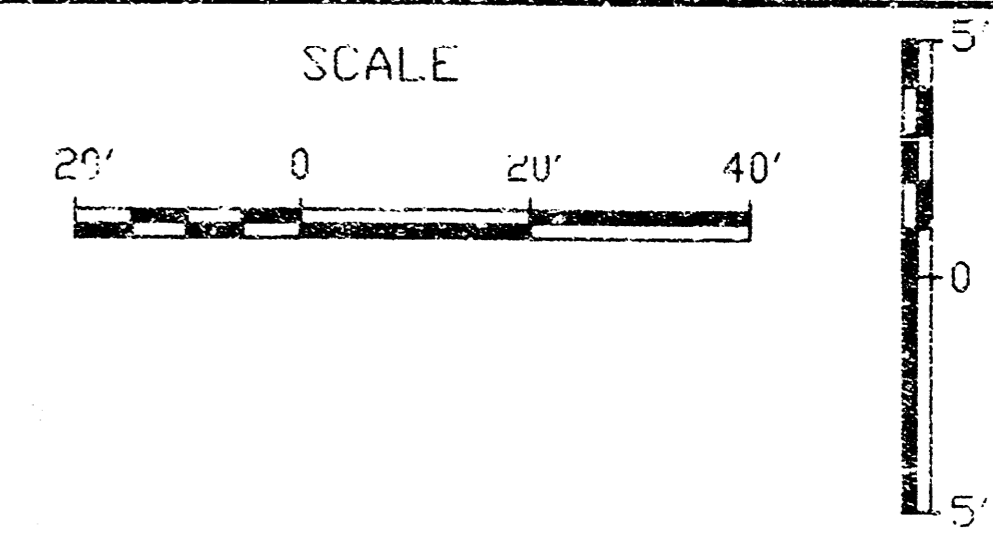
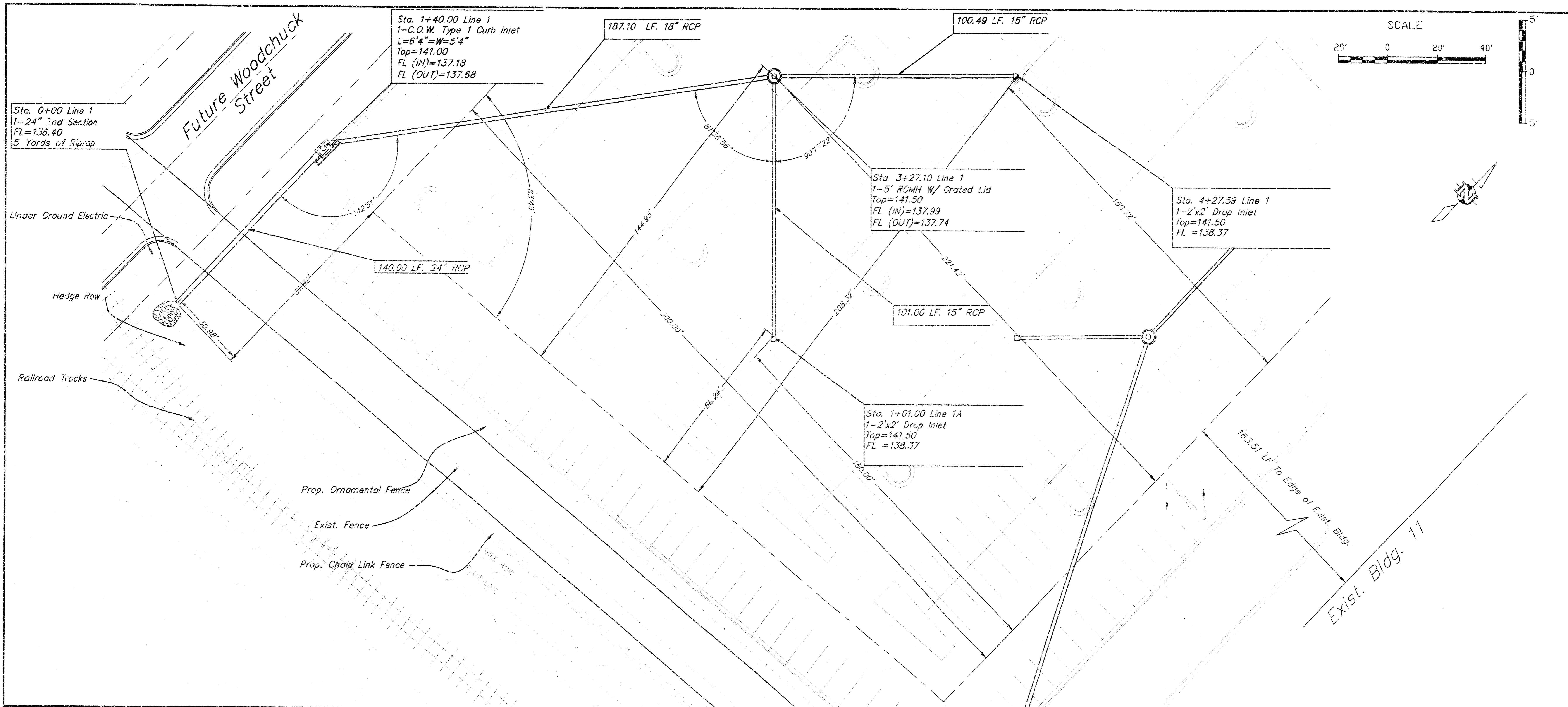


APPROVED AS NOTED BY CITY ENGINEER OF WICHITA
STORM SEWERS *Juliano Kallman* 9-28-00

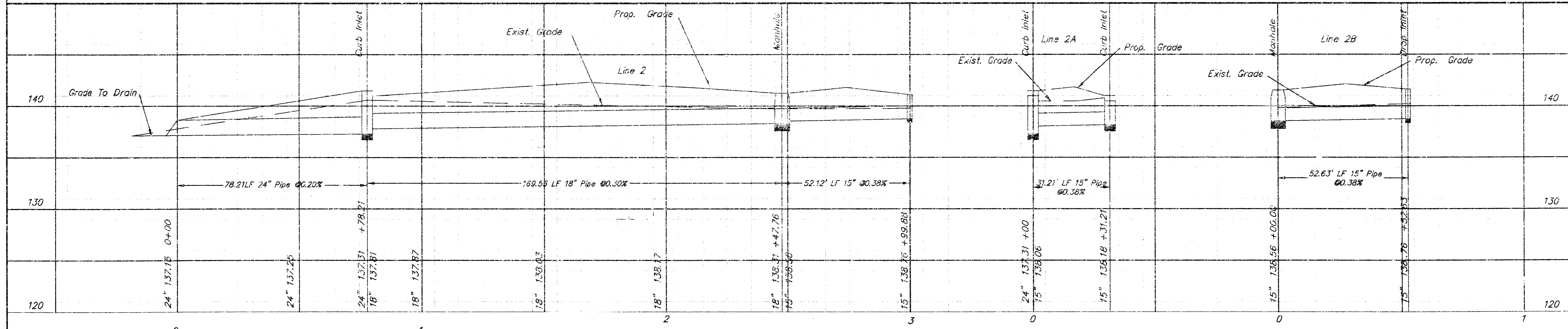
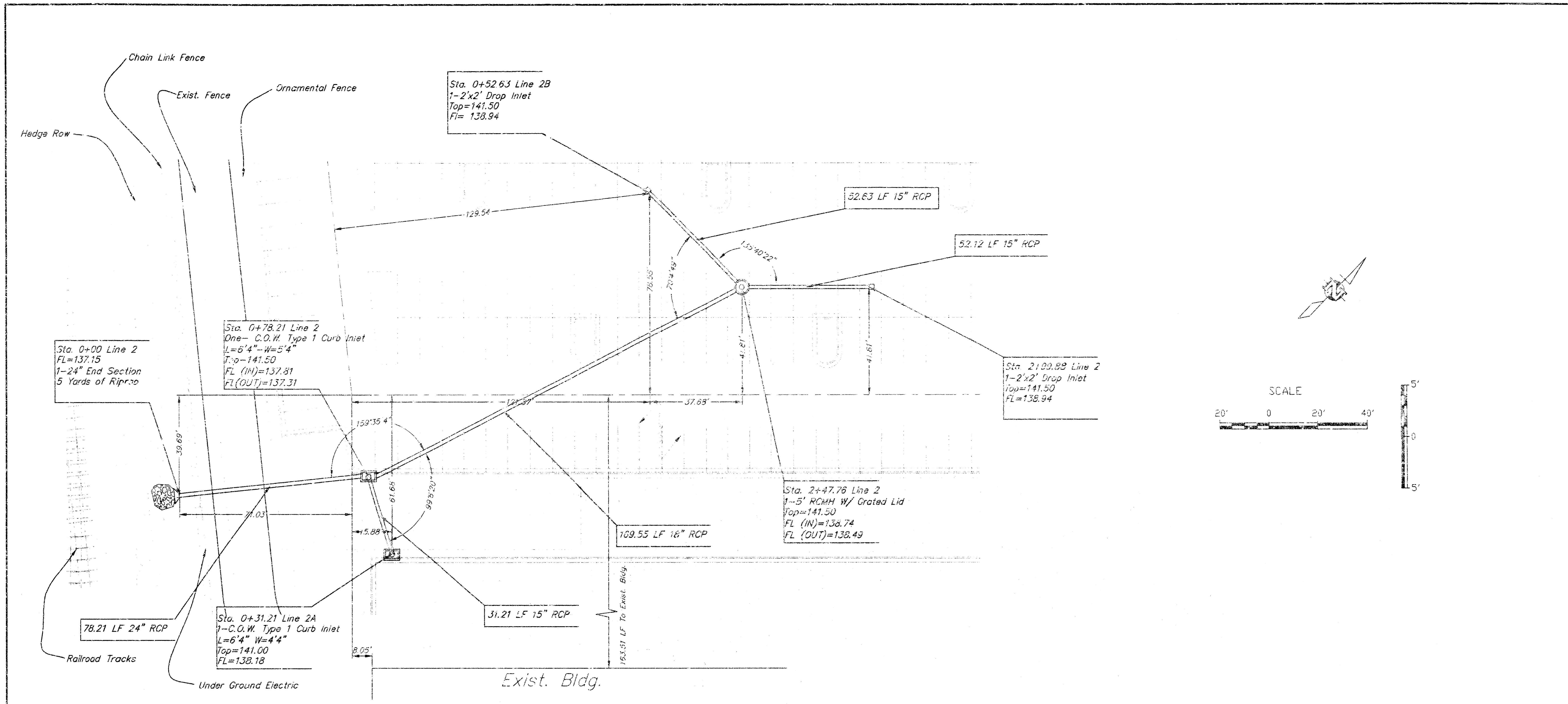
Inspection and testing for this project are to be provided by a Licensed Consulting Engineering Firm under contract with the Owner/Developer. Said inspection is to be in accordance with the City of Wichita standard construction engineering practices and certified by a Licensed Professional Engineer. No work shall be performed in dedicated easements or public right-of-way by the Contractor without such inspection nor shall work be commenced without written authorization by the City Engineer. All construction and materials shall comply with the City of Wichita Specifications and Standards (on file and available in the City Engineer's Office).

FILENAME: 001331.TITLE

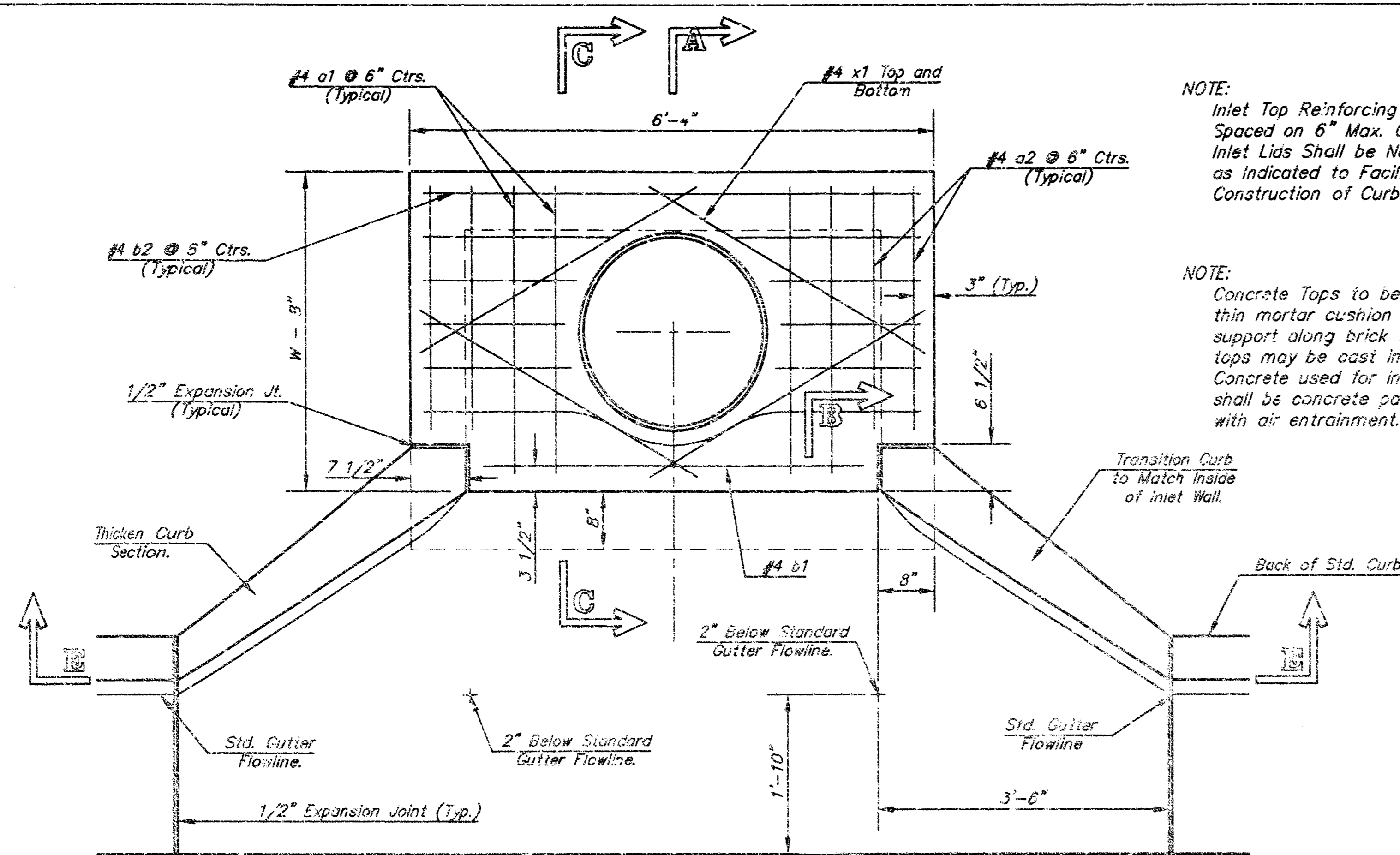
AUSTIN MILLER P.A.
ENGINEERING SERVICES
353 N. Wood, Suite 200 Wichita, KS 67202
316/262-1281 fax: 316/262-6773



	PROJECT NUMBER 1020 PPS (607881)				AM NO. 007.33	BOMBARDIER LEARJET SWS LINE 1-1A WICHITA, KS	SHEET 2 OF 7
	DESIGN RR	DRAWN BB	FILE SWSPP1	DATE 6/00	SCALE 1=20		



	PROJECT NUMBER 1020 PPS (907881)				AW NO. 00133	SHEET 3
	DESIGN RR	DRAWN BB	FILE SWSPP2	DATE 6/00	SCALE 1"=20'	
BOMBARDIER LEARJET SWS LINE 2-2B WICHITA, KS						SHEET 3 OF 7

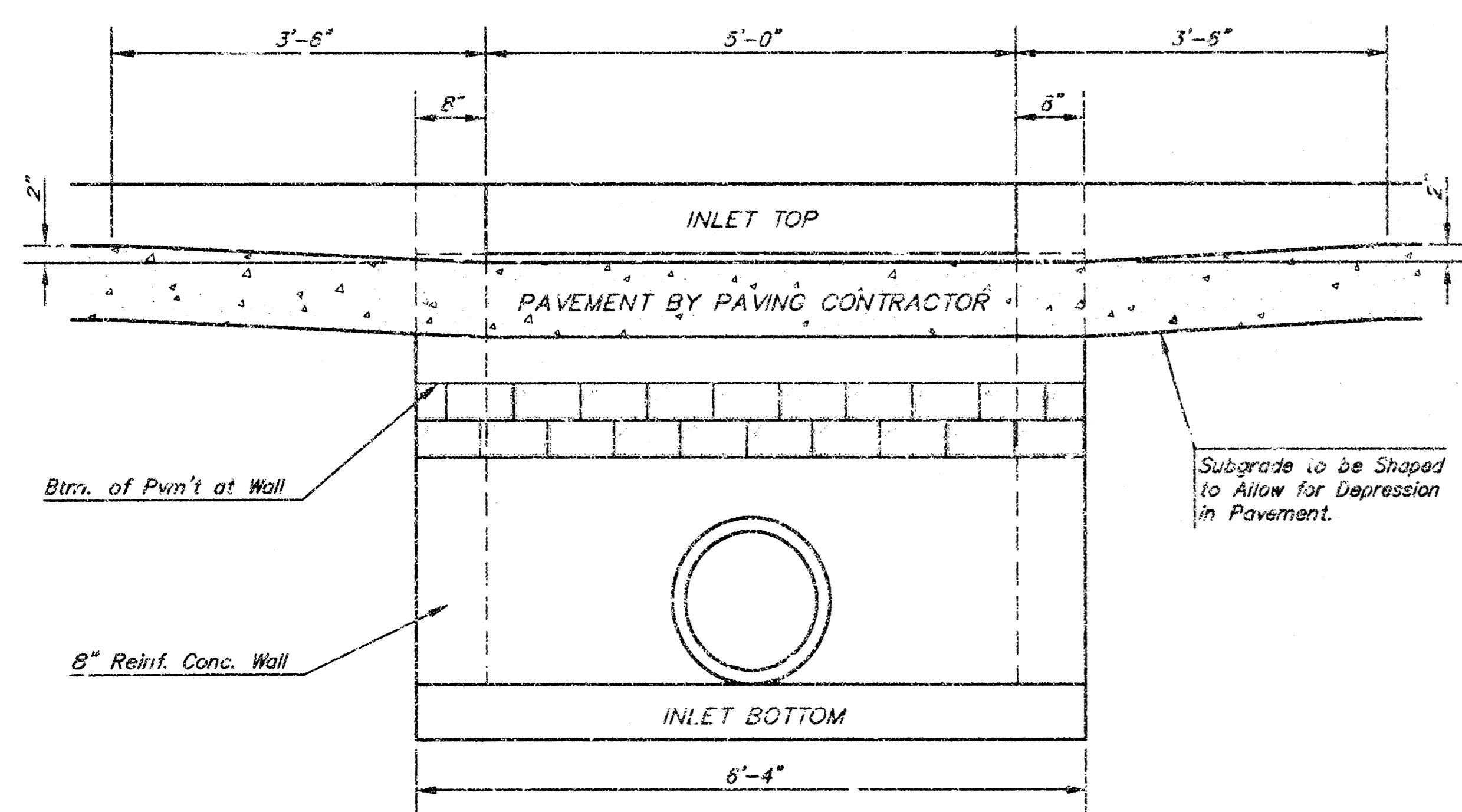


NOTE:
Inlet Top Reinforcing shall be Spaced at 6" Max. Centers.
Inlet Lias Shall be Notched Out as Indicated to Facilitate Construction of Curb.

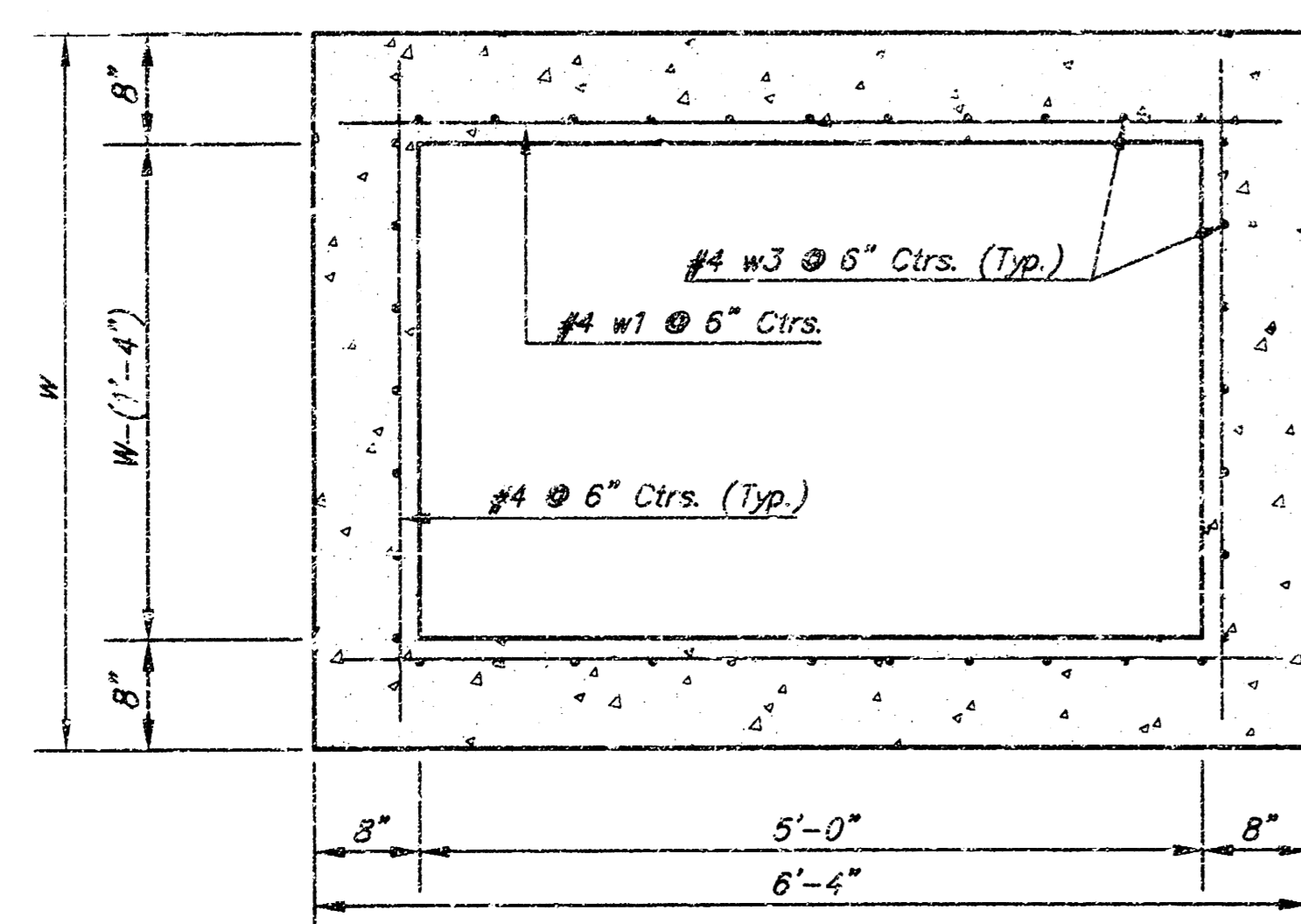
NOTE:
Concrete Tops to be installed on thin mortar cushion to insure full support along brick walls. Concrete tops may be cast in place or precast. Concrete used for inlet construction shall be concrete pavement mix with air entrainment.

NOTE:
Expansion Joint Only in Curb Area With Concrete Pavment.

PLAN

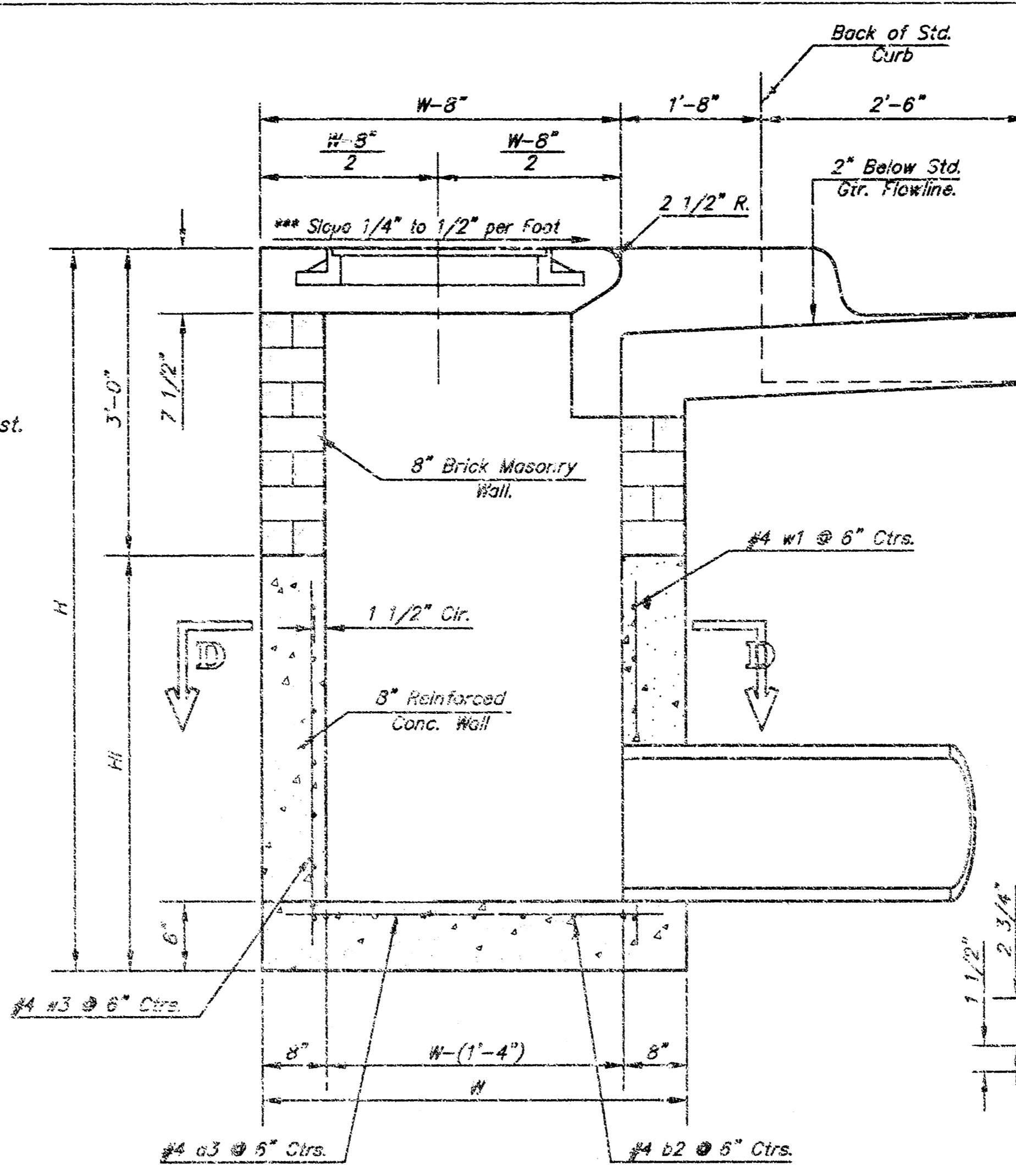


SECTION E-E



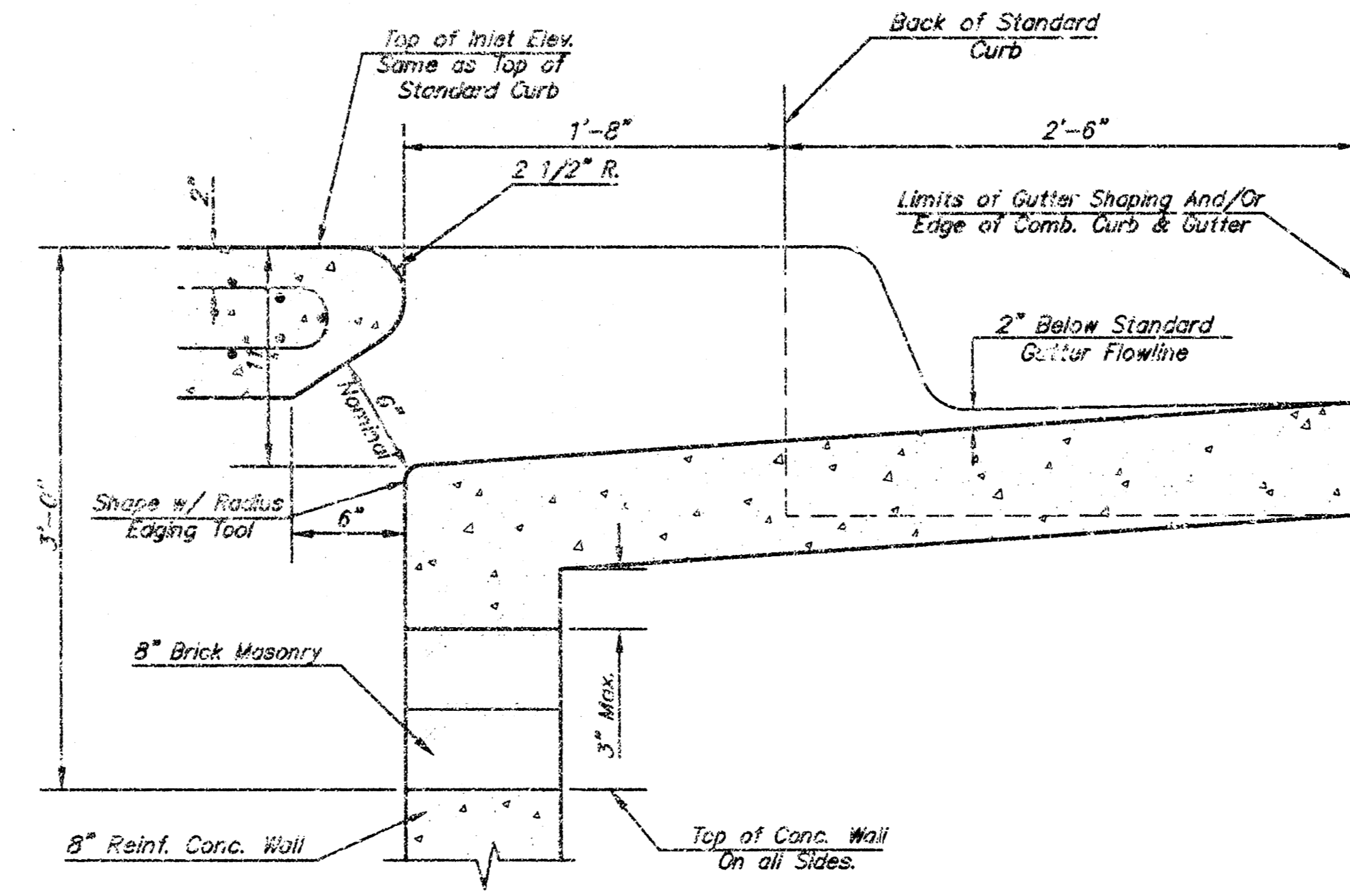
SECTION D-D

NOTE: Contractor shall have the option of constructing 8" brick masonry walls between the concrete inlet base and top on this inlet when W=6'-4" and H=7'-0" or less.
Additional curb and gutter construction necessary to connect set-back inlet to pavement will be paid for at the unit price bid for each hookup.
Inlet invert shall be shaped with 8 sack sand mix concrete to create flow channels and to increase hydraulic efficiency such that the inlet will be self-cleaning between all inlet and/or outlet pipes.
The ends of all pipes installed in inlets shall be cut off flush with the inside face of the inlet wall

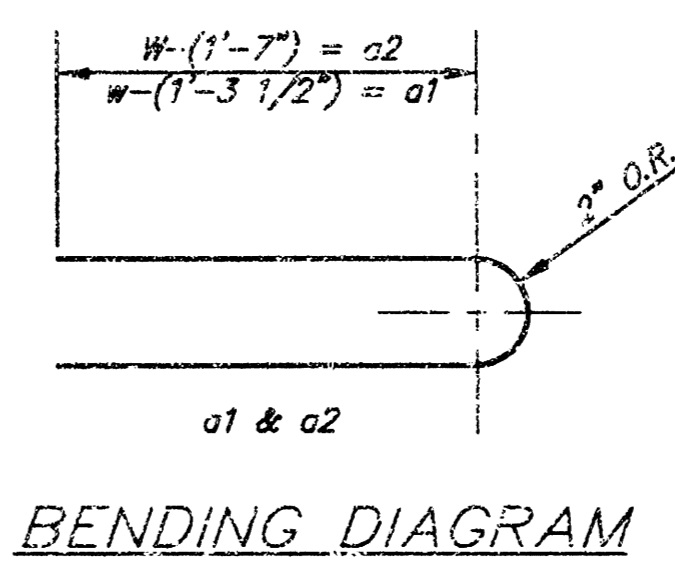


SECTION A-A

NOTE: Slope of inlet tops to match Sidewalk or Parking Slopes within Limits Indicated.



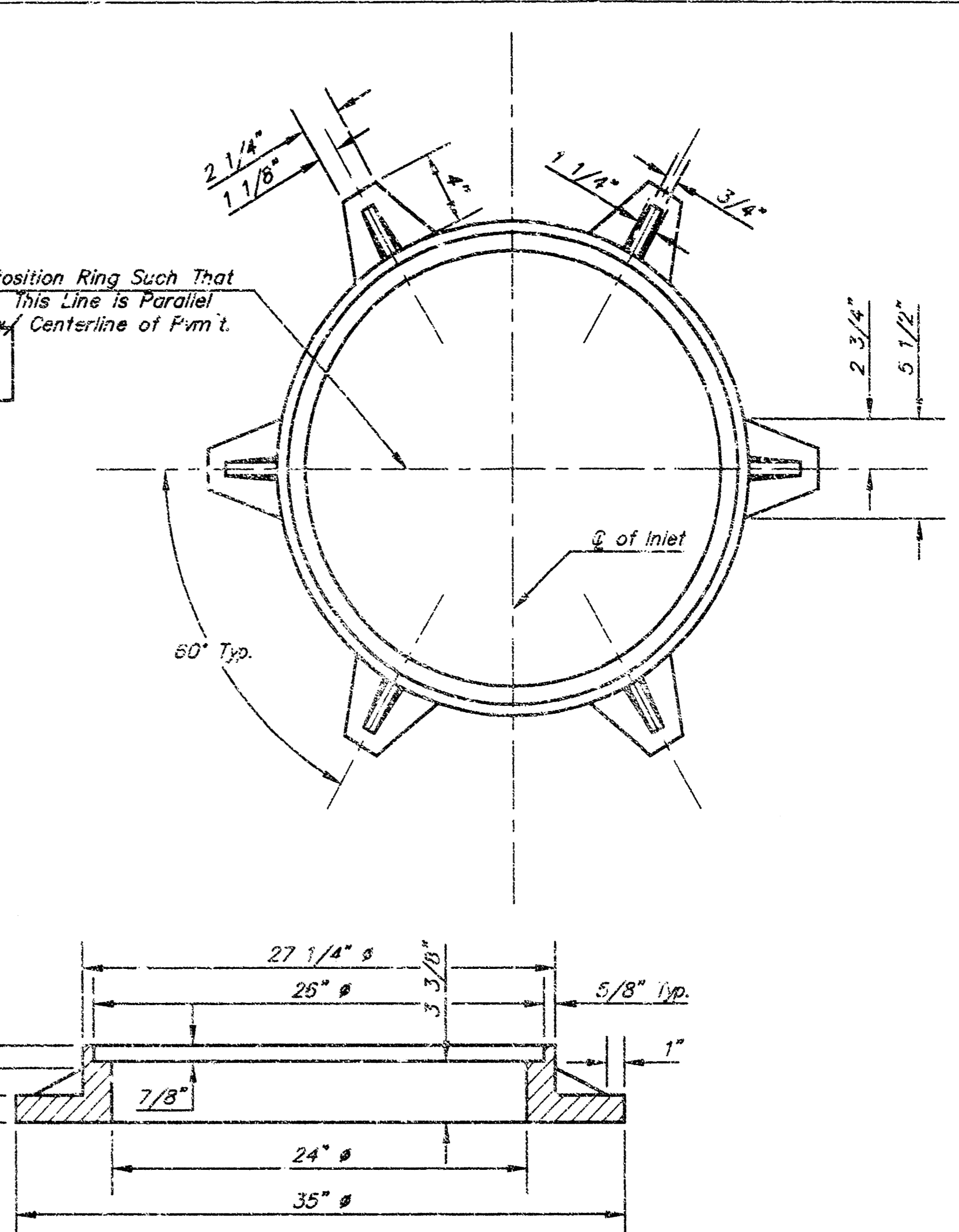
SECTION B-B



BENDING DIAGRAM

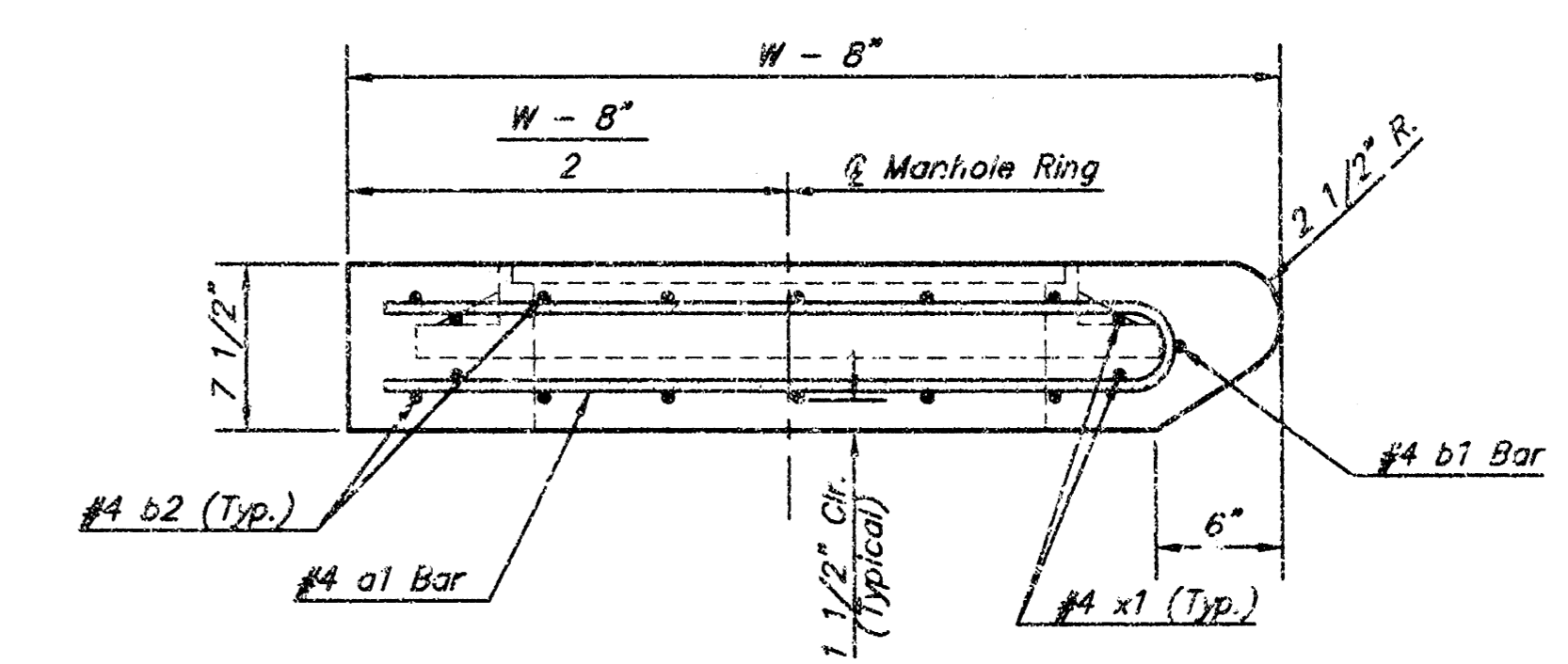
PRECAST SLAB AND FLOOR REINFORCING											
MARK	SIZE	W = 4'-4"		W = 5'-4"		W = 6'-4"		W = 7'-4"		W = 8'-4"	
		NO.	LENGTH	NO.	LENGTH	NO.	LENGTH	NO.	LENGTH	NO.	LENGTH
* a1	#4	6	6'-7"	6	8'-2"	6	10'-7"	6	12'-2"	6	14'-7"
* a2	#4	4	6'-0"	4	8'-0"	4	10'-0"	4	12'-0"	4	14'-0"
* a3	#4	13	1'-1"	13	5'-1"	13	6'-1"	13	7'-1"	13	8'-1"
* b1	#4	1	4'-9"	1	4'-9"	1	4'-9"	1	4'-9"	1	4'-9"
* b2	#4	23	6'-1"	29	6'-1"	35	6'-1"	41	6'-1"	47	6'-1"
* x1	#4	8	3'-10"	8	4'-2"	8	4'-6"	8	4'-10"	8	5'-2"

* Field Bend or Cut Reinforcing as Required for Clearance.
① 4 (H = 12") (H = 21") Rounded down to nearest 0.5'
② H = 3'



MANHOLE RING AND COVER

Weight = 180 Lbs.
*See City of Wichita Standard Manhole Ring and Cover Detail Sheet for Cover Details to Be Used With Inlet Frame.



SECTION A-A

STANDARD CURB INLET PRECAST TOPS			
W	PRE-CAST TOP SIZE	PIPE SIZE	CU. YD. CONC.
4'-4"	3'-8" x 6'-4" x 7 1/2"	21" & SMALLER	0.382
5'-4"	4'-8" x 6'-4" x 7 1/2"	24" & 30"	0.512
6'-4"	5'-8" x 6'-4" x 7 1/2"	36" & 42"	0.642
7'-4"	6'-8" x 6'-4" x 7 1/2"	48" & 54"	0.772
8'-4"	7'-8" x 6'-4" x 7 1/2"	60" & 66"	0.902

THE CITY OF WICHITA

STANDARD TYPE 1-A
CURE INLET
OPENING = 6" x 5'-0"

M. E. LINDEBAK P.E. - CITY ENGINEER

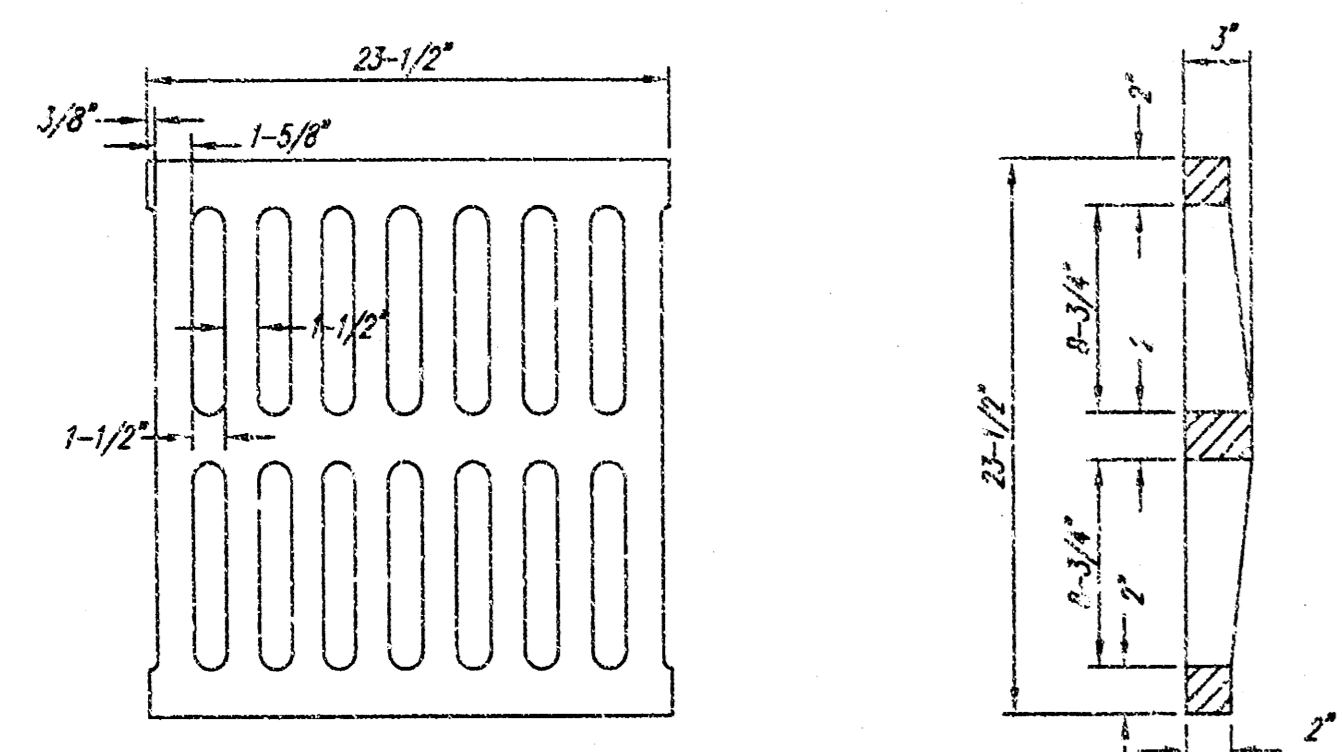
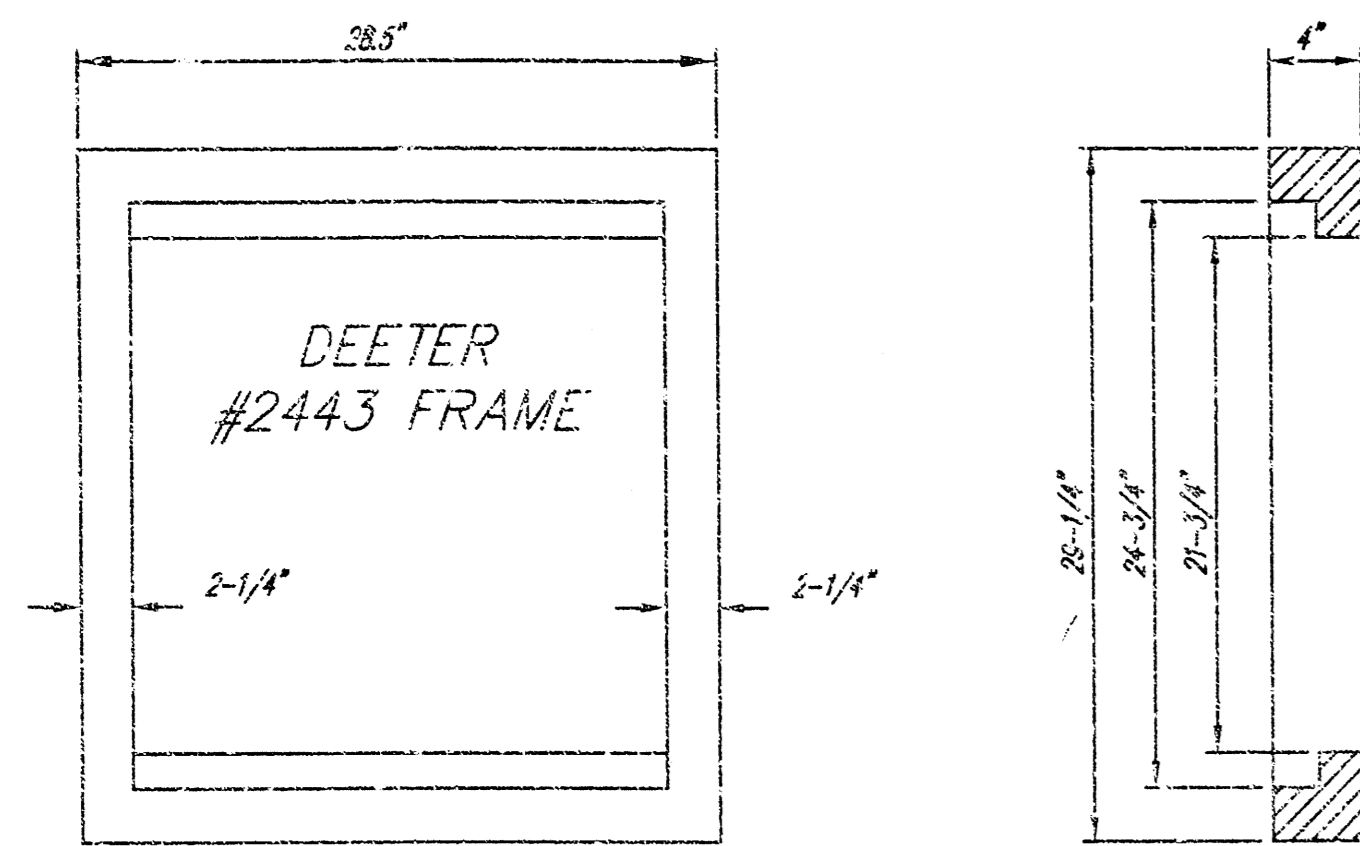
CITY ENGINEER'S OFFICE
CITY HALL - SEVENTH FLOOR
455 NORTH MAIN STREET
WICHITA, KANSAS 67202
(316) 268-4000
(316) 268-4114 FAX

PROJECT NUMBER
1020 PPS (607861)

INDEX CODE

DATE
JUN 9

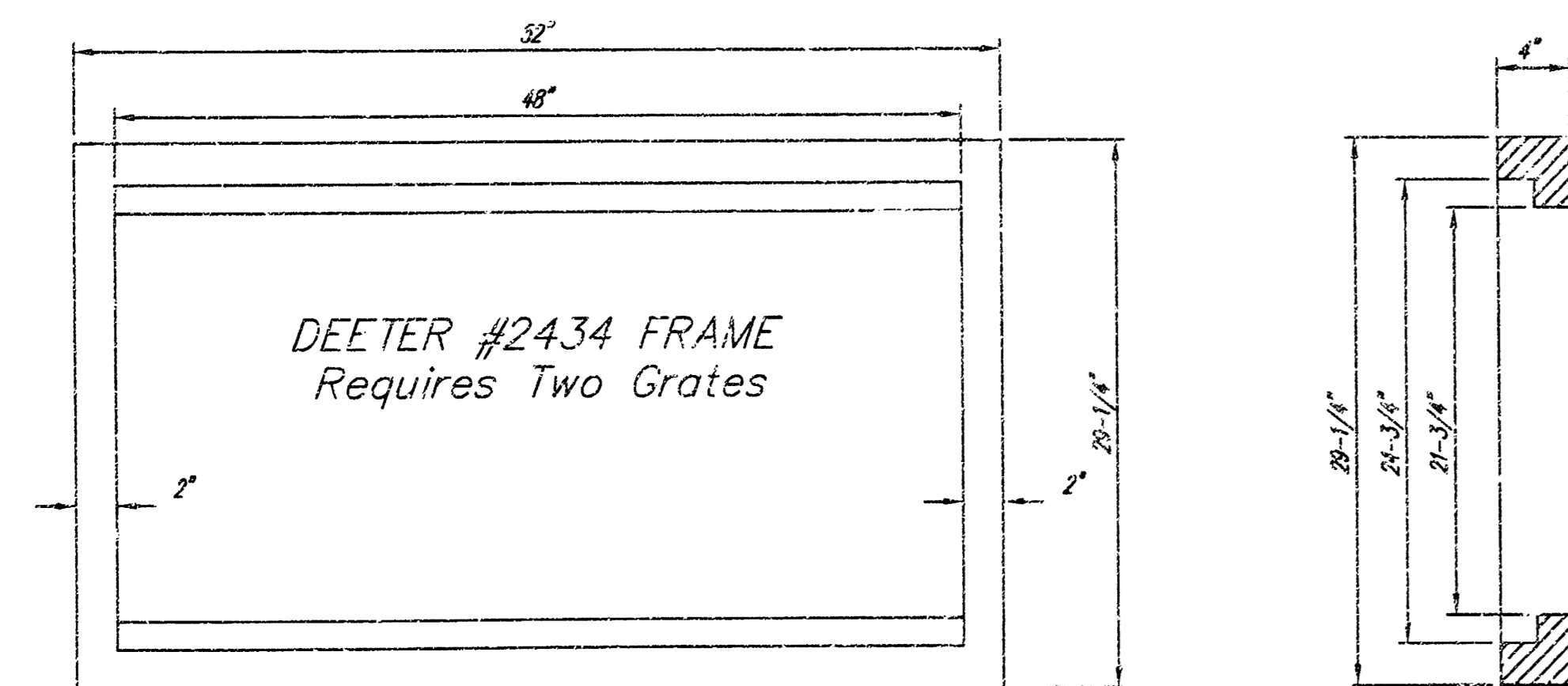
SHEET 4 OF 7



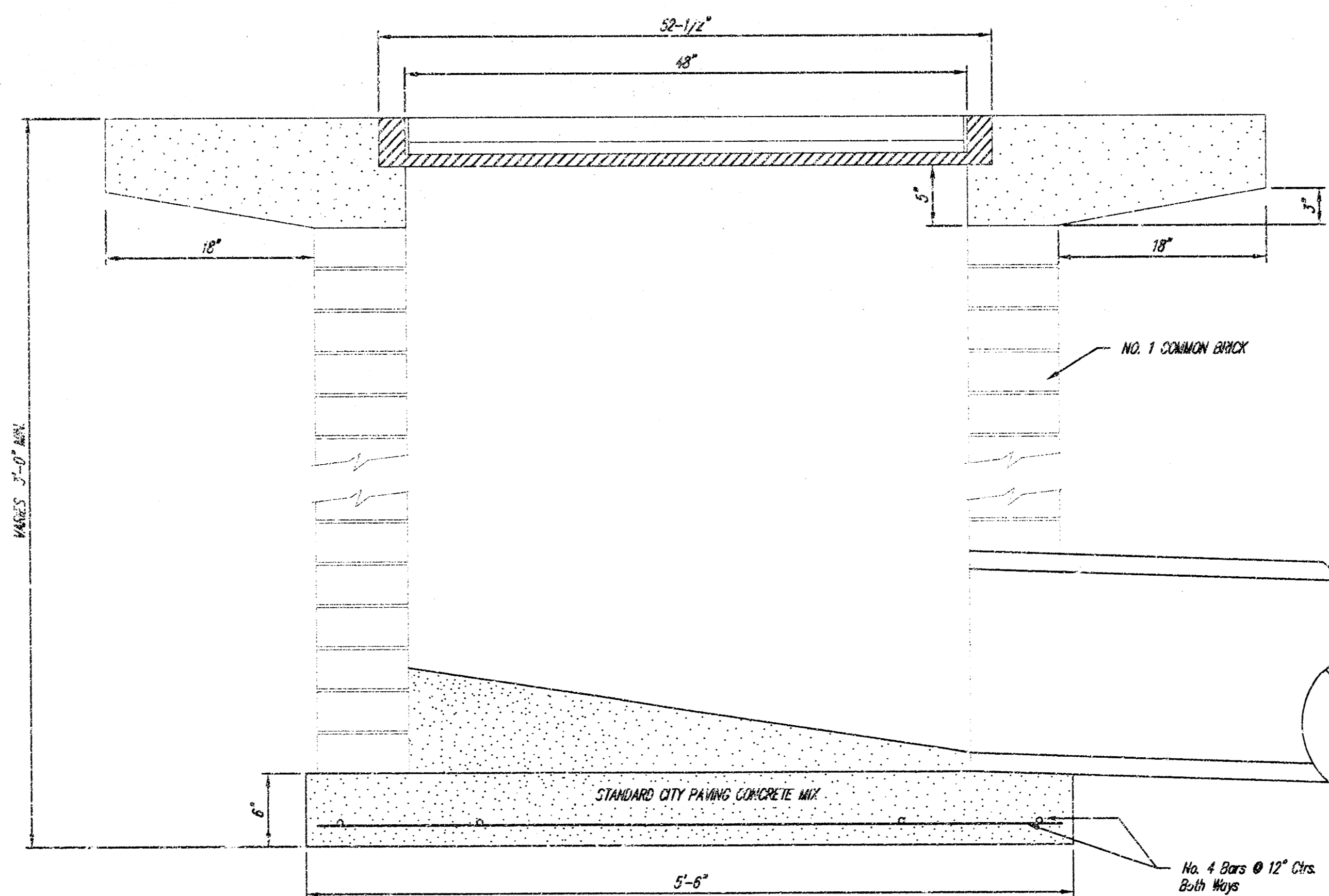
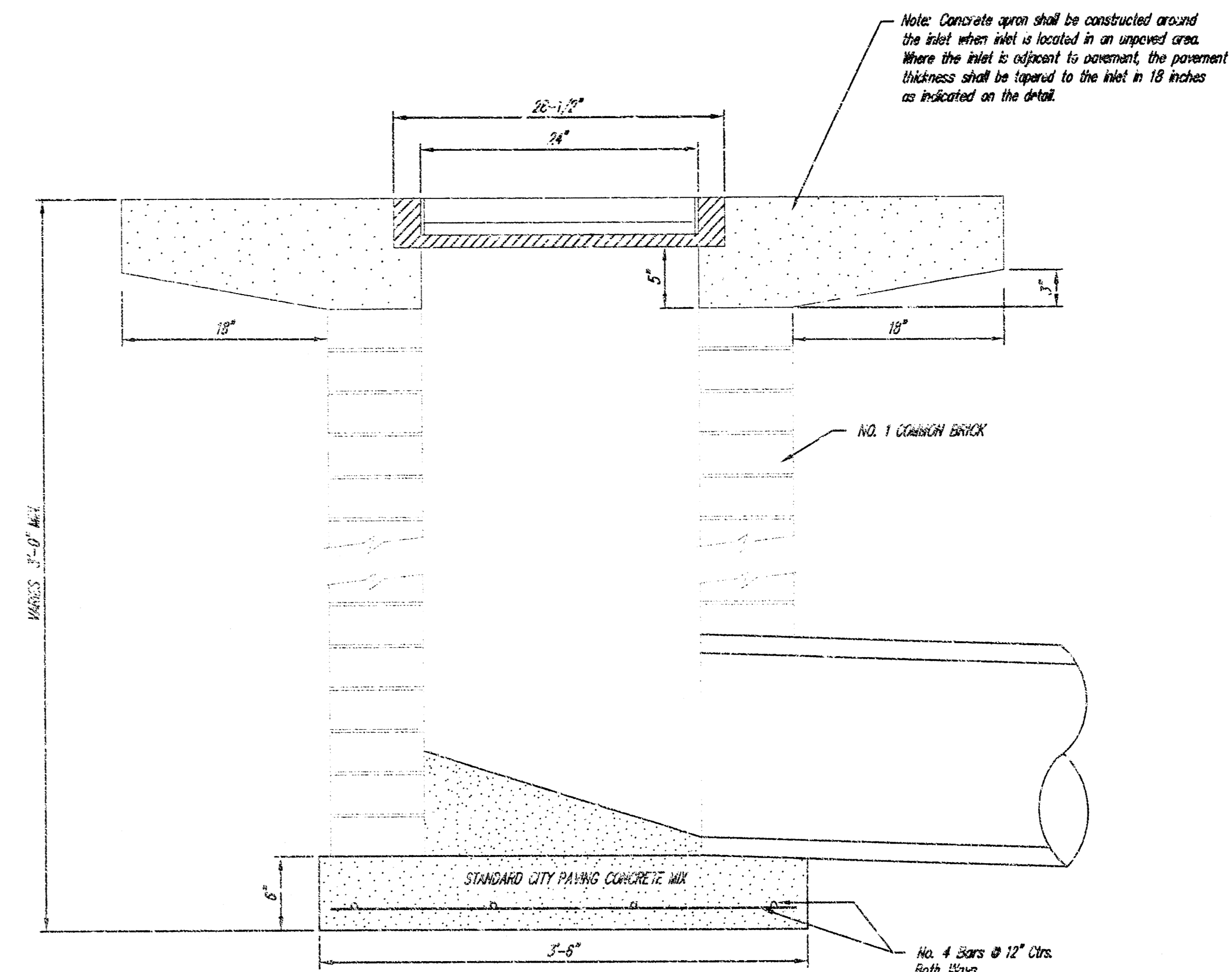
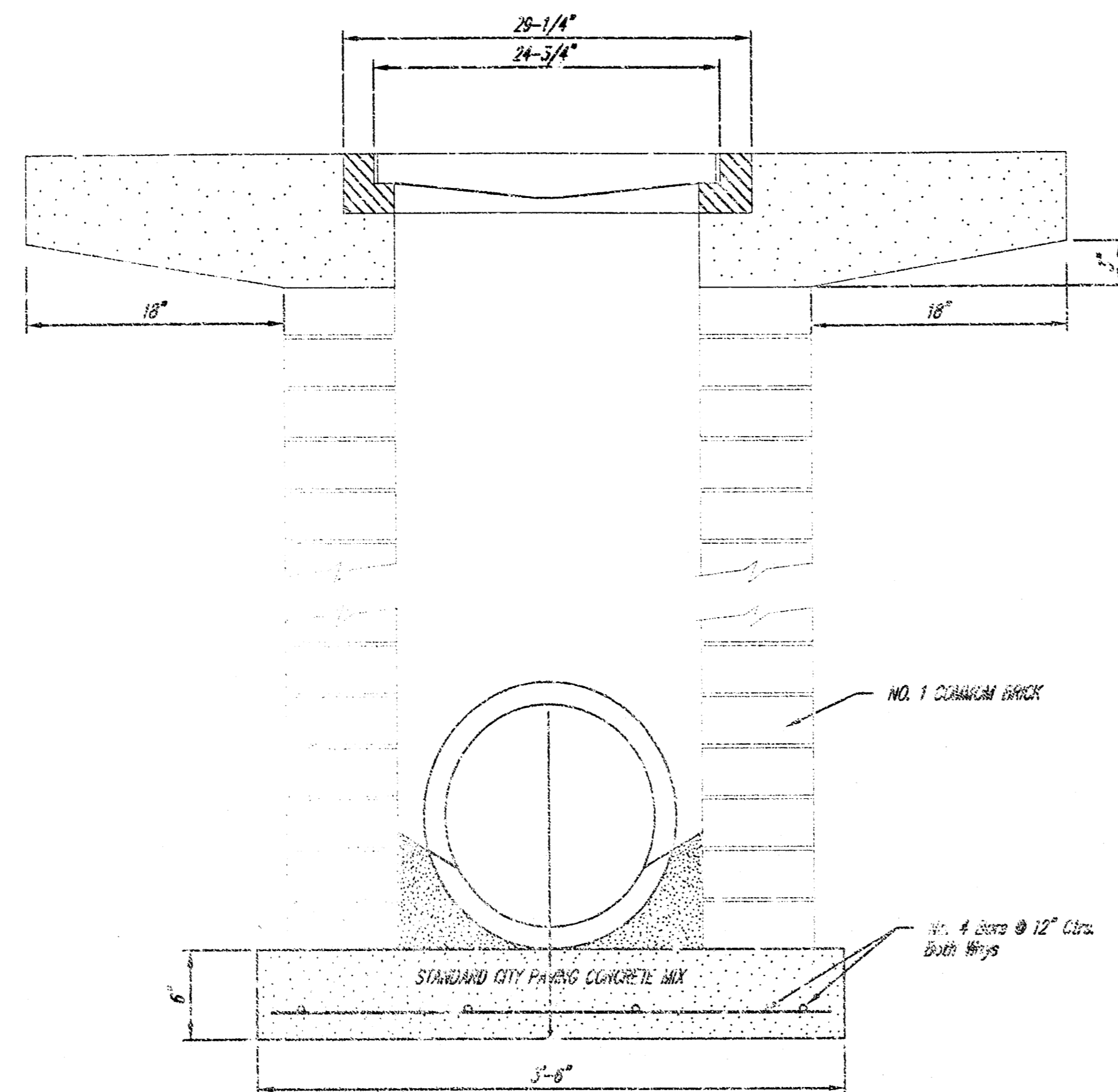
DEETER #2433 GRATE

24" x 24" Frame and Grate Detail

NOTE: Grates shall be imprinted on the top surface with "CITY OF WICHITA" using letters at least 1" in height. Other marking methods may be approved by the engineer.



Double 24" x 24" Frame Detail



<p>THE CITY OF WICHITA</p> <p>CITY ENGINEER'S OFFICE CITY HALL - SEVENTH FLOOR 455 NORTH MAIN STREET WICHITA, KANSAS 67202 (316) 268-4000 (316) 268-4114 FAX</p>	<p>DROP INLET 2' X 2'-2" X 4'</p>		
	<p>M. E. LINDEBAK P.E. - CITY ENGINEER</p>		
	<p>PROJECT NUMBER 797 PPS 607861</p>	<p>INDEX CODE</p>	
	<p>DATE MAR 96</p>	<p>SHEET 5 OF 7</p>	

DRAPWH T.D.M.

10 40 30 21