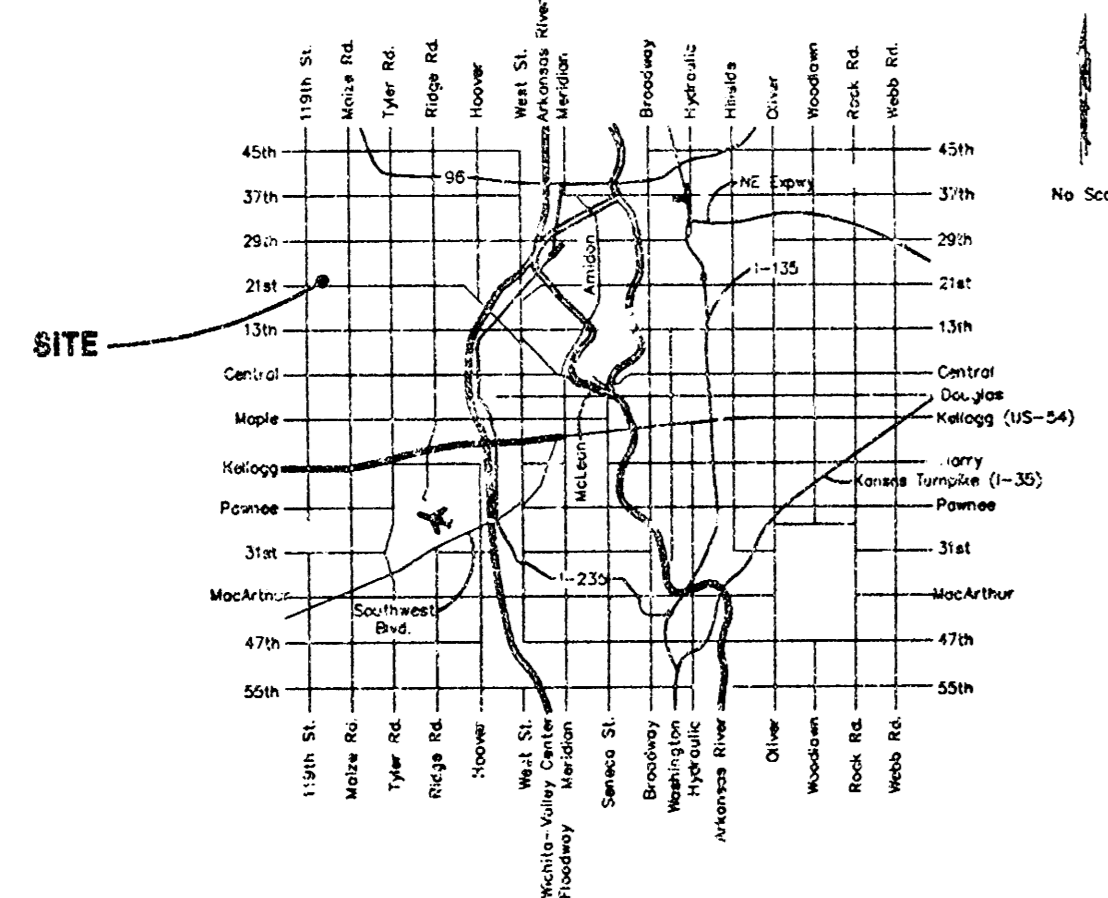


# STORM WATER SEWER TO SERVE Evangel Assembly of God Addition

LOT 1  
Private Project Number  
**1021 PPS (607861)**

CITY OF WICHITA, KANSAS  
Michael E. Lindebak, P.E. City Engineer  
October 2000

Location Map



**Legal Description**

Lot 1, Evangel Assembly of God Addition,  
Wichita, Sedgwick County, Kansas.

**Index**

- Cover 1
- Plan/Profile 2
- Drop Inlet Details 3
- Copy Of Plat 4

**Benchmarks:**

- #1 Shefford & 21st Street North - City of Wichita Disc  
Located @ Southeast Corner of intersection,  
52.6' South & 35' East of Centerline of Both.  
Elevation: 165.16 City Datum
- #2 "X" Cut in Top of N. End of Curb, East side of  
Covington Cr., South Side of 21st Street.  
Elevation: 162.13 City Datum

**General Notes**

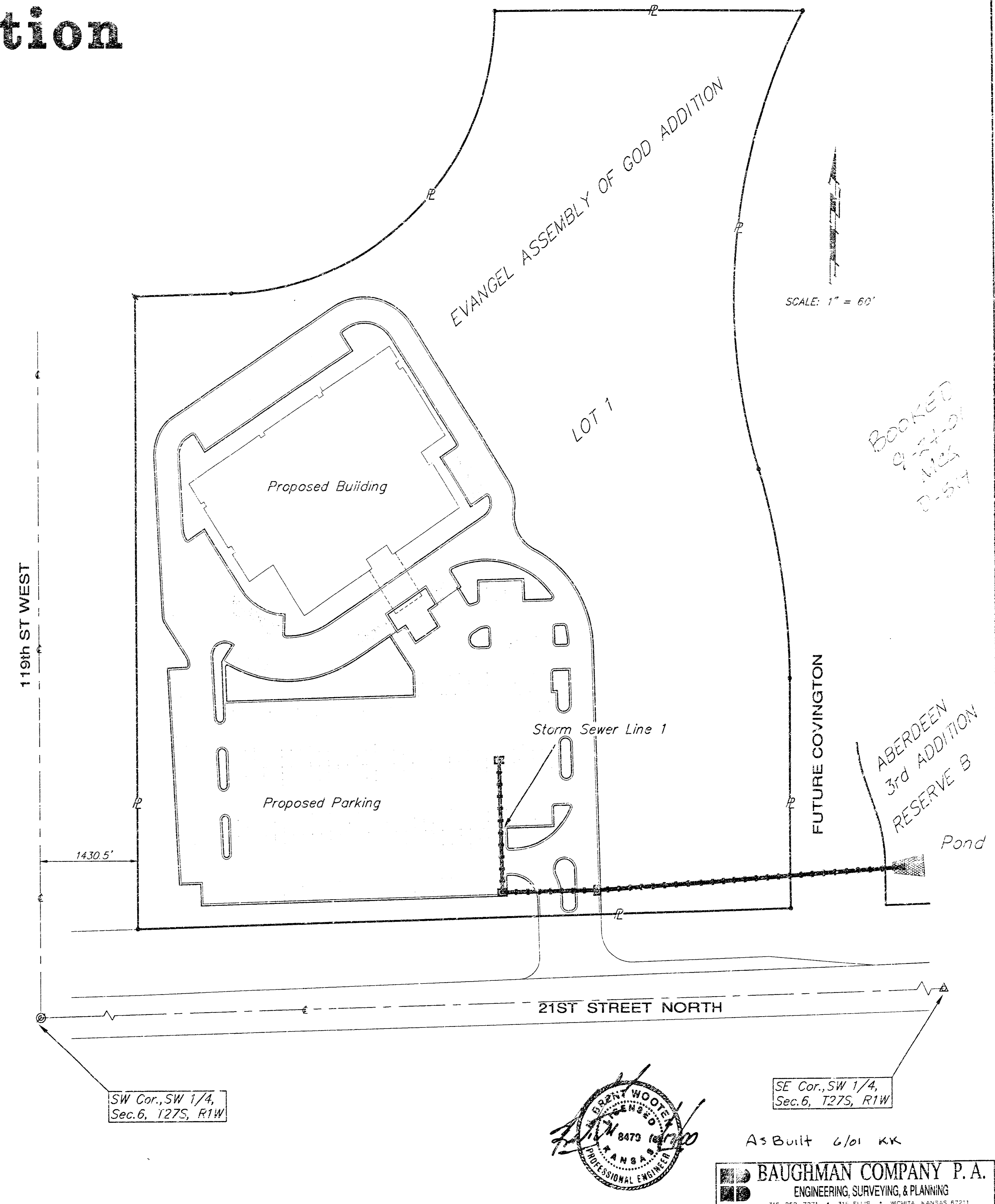
1. Contractor will be required to provide notice to utility companies a minimum of forty-eight (48) hours prior to any excavation, as follows:  
Kansas One-Call 687-2470  
The Contractor must notify the following in case of an emergency:  
Cox Communications 262-4270  
Kansas Gas Service Company 383-8600  
Kansas Gas & Electric Company 383-8650  
Peoples Gas Company 942-7600  
Southwestern Bell Telephone Company 1-571-2611  
City of Wichita Water Department 268-4308  
City of Wichita Sewer Department 268-4071
2. Utility service lines, poles, valve boxes, meters, et cetera are to be adjusted as necessary by others prior to construction unless the plans specifically call for their adjustment by the Contractor or unless the plans specifically identify a utility to be adjusted by its owner during construction. Existing utilities and their location, as shown on the plans represent the best information obtainable for design and shall be field verified. The contractor will be required to work around existing utilities within the right-of-way which do not conflict with proposed construction.
3. Contractor shall not start work on the project until the Project Inspector is assigned to the project and is present on the site. Any work done without inspection will be required to be uncovered for inspection.
4. All disturbed R/W areas not intended for pavement or sidewalk construction shall be seeded with Kansas Premium Fescue Blend at a rate of 8 lb./1000 Sq. Ft., fertilized with a 16-20-6 ratio at a rate of 4 lb./1000 Sq. Ft., and mulched with Prairie Hay at a rate of 92 lb./1000 Sq. Ft. Mulch shall be "patted" with forks or punched into soil to reduce loss due to wind.
5. Trees and shrubs which are in direct conflict with proposed new construction shall be removed by the Contractor with the Engineer's approval. Trees and shrubs which are not in direct conflict with proposed new construction shall be saved and protected from damage.
6. Rubble from the removal of miscellaneous structures and excess excavation which is to be wasted shall be disposed of on sites to be provided by the Contractor. These sites shall be approved by the Engineer as to suitability, appearance and site location. Locations that, in the opinion of the Engineer, will leave an unsightly appearance will not be approved. All disposal sites must be approved by the Kansas Department of Health and Environment. Material either stockpiled or disposed of in a flood plain would require a Kansas State Board of Agriculture permit. Any material dumped in waters of the United States or wetlands is subject to U.S. Corps. of Engineers permitting regulations. Any material buried or stockpiled beyond approved construction limits would require additional archaeological investigations unless buried in a previously approved borrow location.

APPROVED AS NOTED  
BY CITY ENGINEER OF WICHITA

Storm Sewers URH 10/19/00

NOTE TO CONTRACTORS

Installation, inspection and testing for this project is to be provided by a Licensed Consulting Engineering Firm under contract with the Owner/Developer. Said inspection to be in accordance with the City of Wichita standard construction engineering practices and certified by a Licensed Professional Engineer. No work shall be performed in dedicated easements or public right-of-way by the Contractor without such inspection nor shall any work be commenced without written authorization by the City Engineer. All Construction and Materials shall comply with the City of Wichita Specifications and Standards (on file and available in the City Engineer's Office).



BOOKED  
9-24-01  
MEL  
D-517

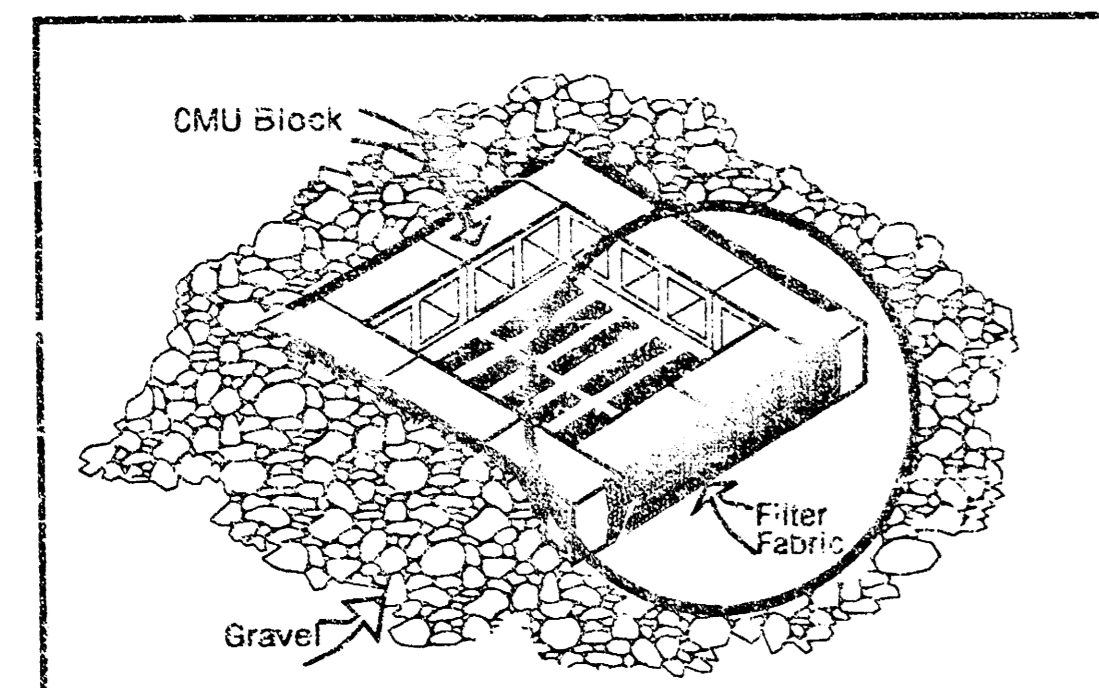
SE Cor., SW 1/4,  
Sec. 6, T27S, R1W

As Built 6/01 KK

**BAUGHMAN COMPANY P. A.**  
ENGINEERING, SURVEYING, & PLANNING  
316-262-7211 • 316-262-7212 • WICHITA, KANSAS 67211

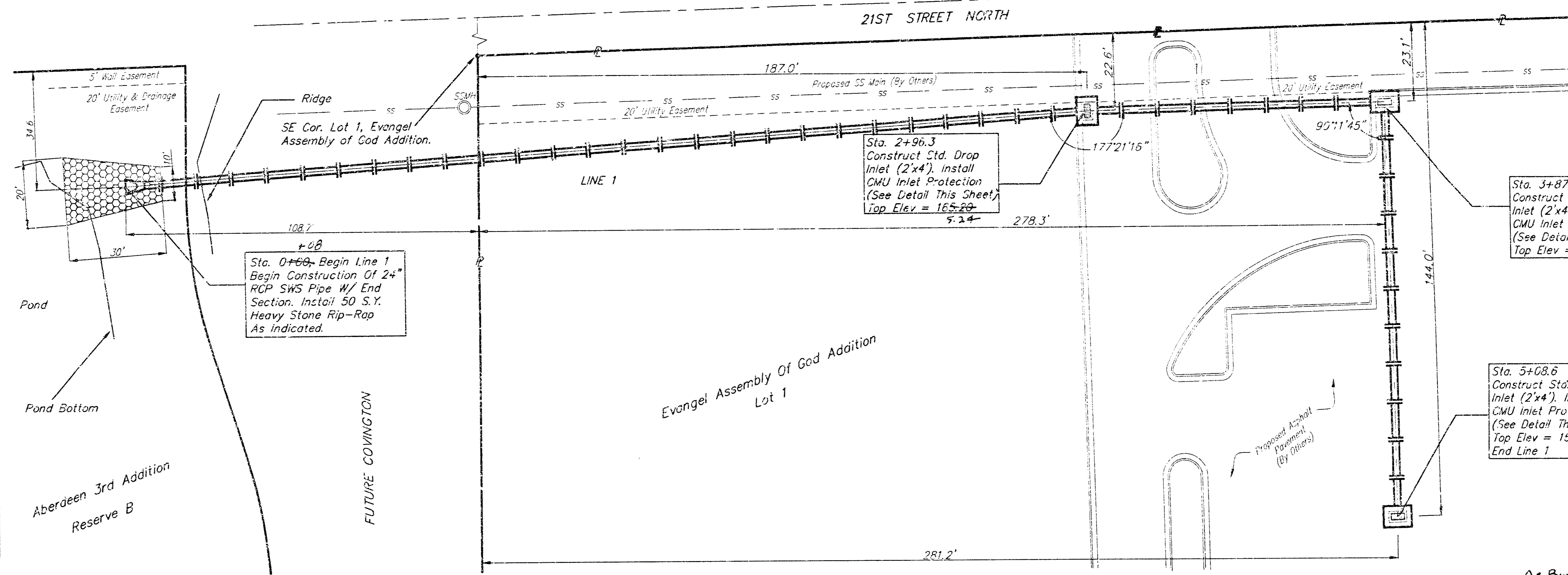
**BENCHMARK #1**  
 Shefford & 21st Street North - City of Wichita Disc  
 Located @ Southeast Corner of Intersection,  
 52.6' South & 35' East of Centerline of Both.  
 Elevation: 165.16 City Datum

**BENCHMARK #2**  
 Cut in Top of N. End of Curb, East side of  
 Covington Clr., South Side of 21st Street.  
 Elevation: 162.13 City Datum

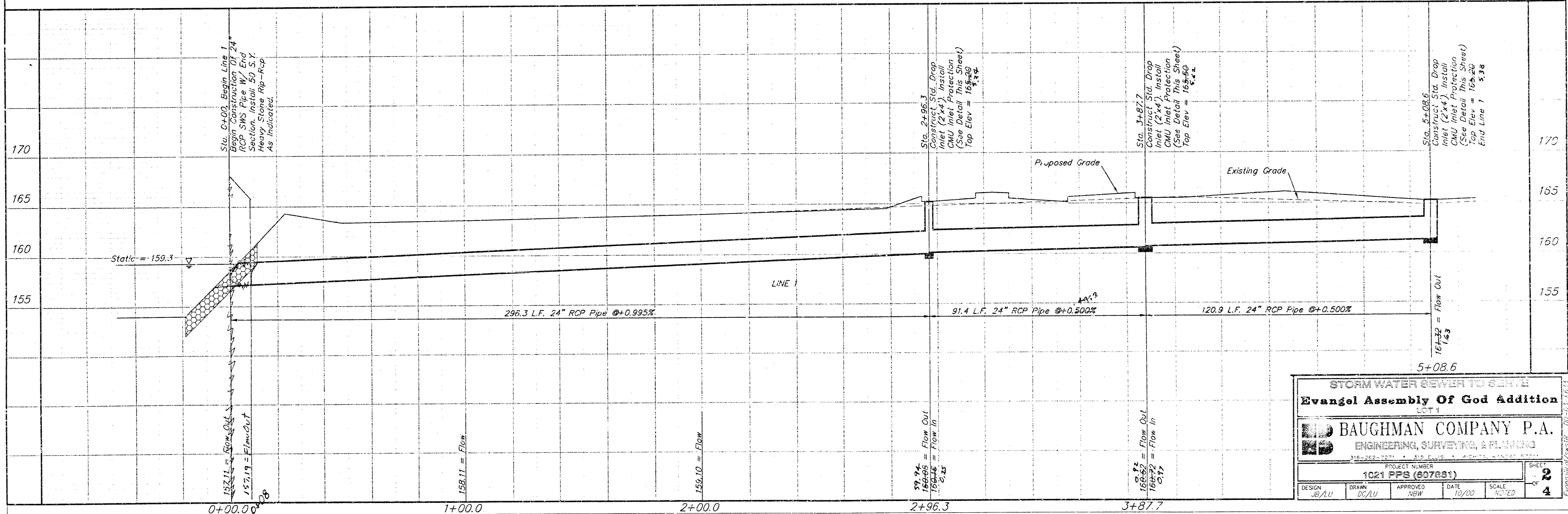


**NOTES:**  
 Frequent maintenance is required to minimize short-circuiting and to remove sediment deposits and buildup.  
 Wrap filter fabric around all CMU block and backfill with 2"-3" gravel rock to allow sediment deposits.  
 DO NOT cover inlet or grates with filter fabric.

**INLET PROTECTION**  
 Storm Drain with Gravel Apron



SCALE:  
 1" = 20' HORIZONTAL  
 1" = 5' VERTICAL

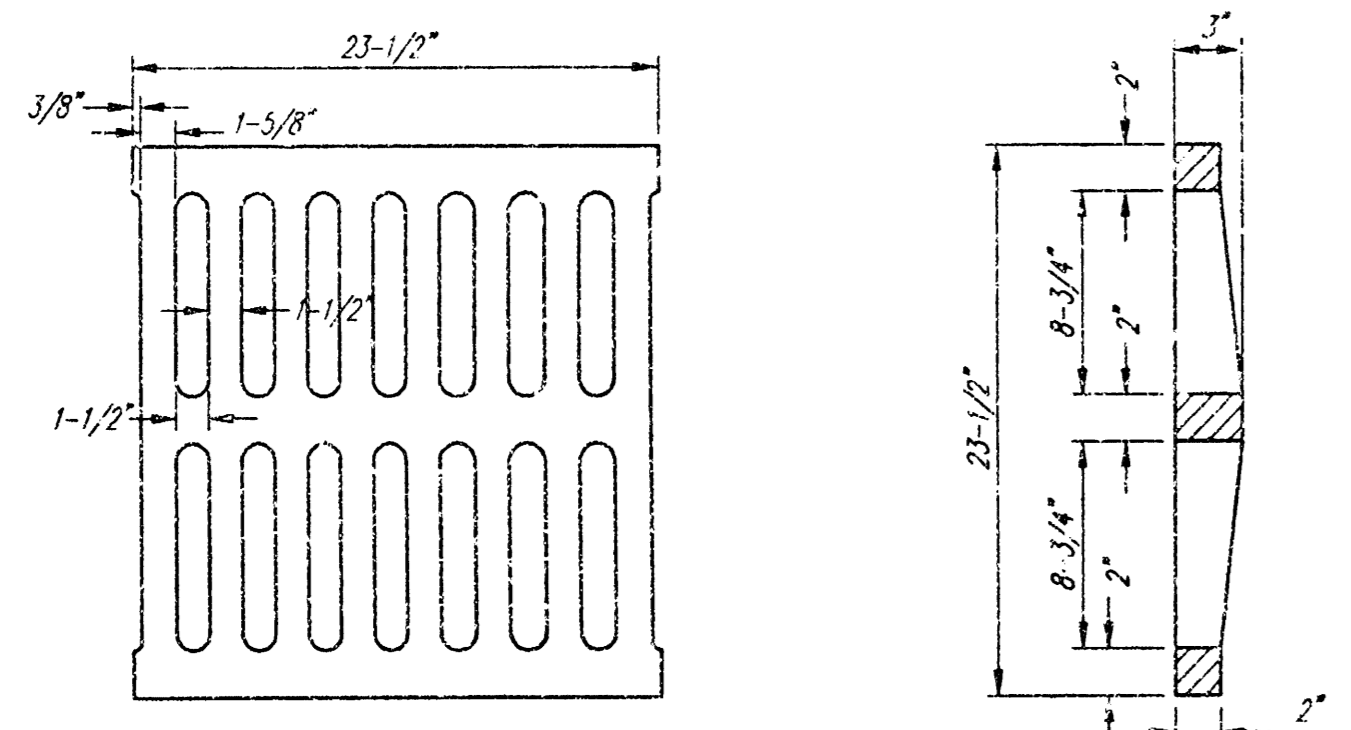
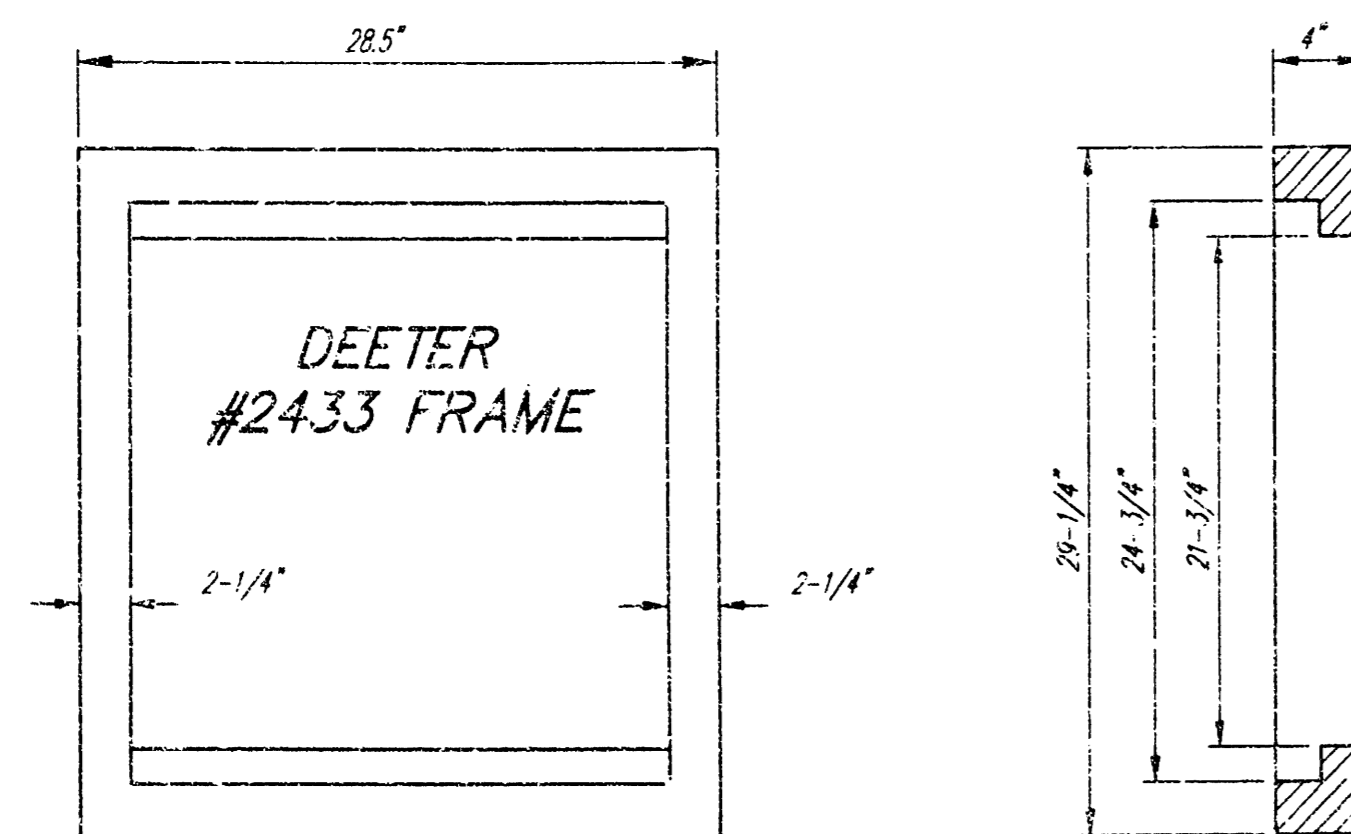


STORM WATER SEWER TO SERVE  
**Evangel Assembly Of God Addition**  
 LOT 1

**BAUGHMAN COMPANY P.A.**  
 ENGINEERING, SURVEYING, & PLANNING

PROJECT NUMBER: 1021 PPS (07831)  
 SHEET: 2 OF 4

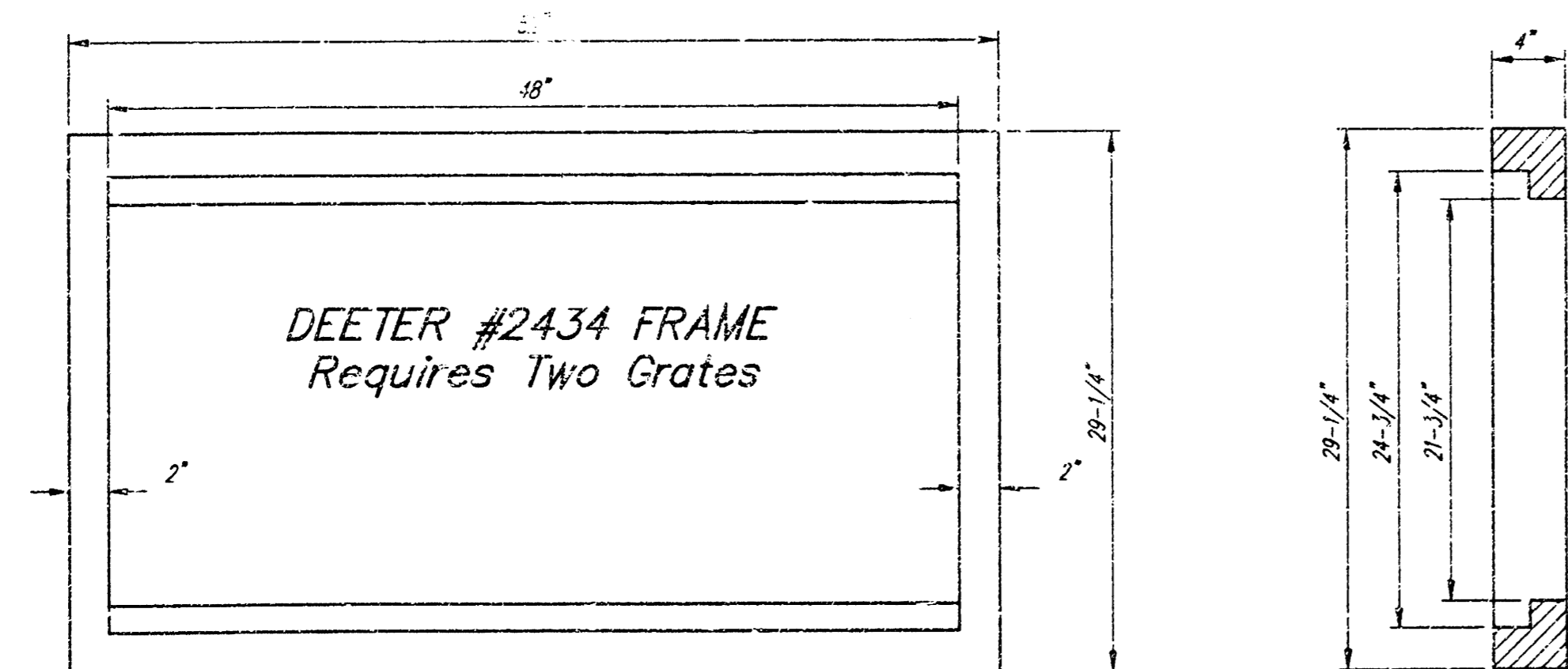
DESIGN: JB/LU    DRAWN: DC/LU    APPROVED: HBW    DATE: 10/00    SCALE: NOTED



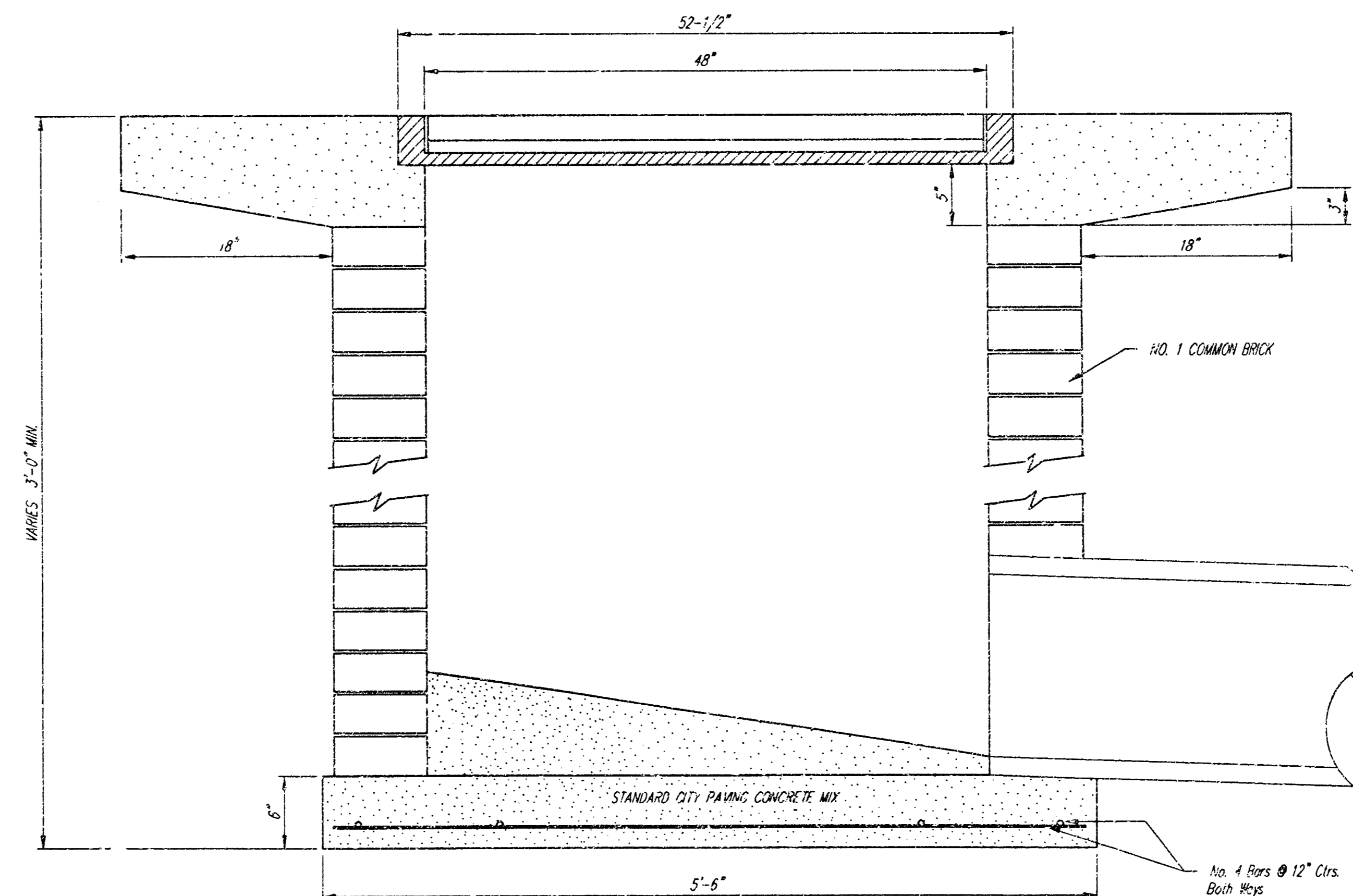
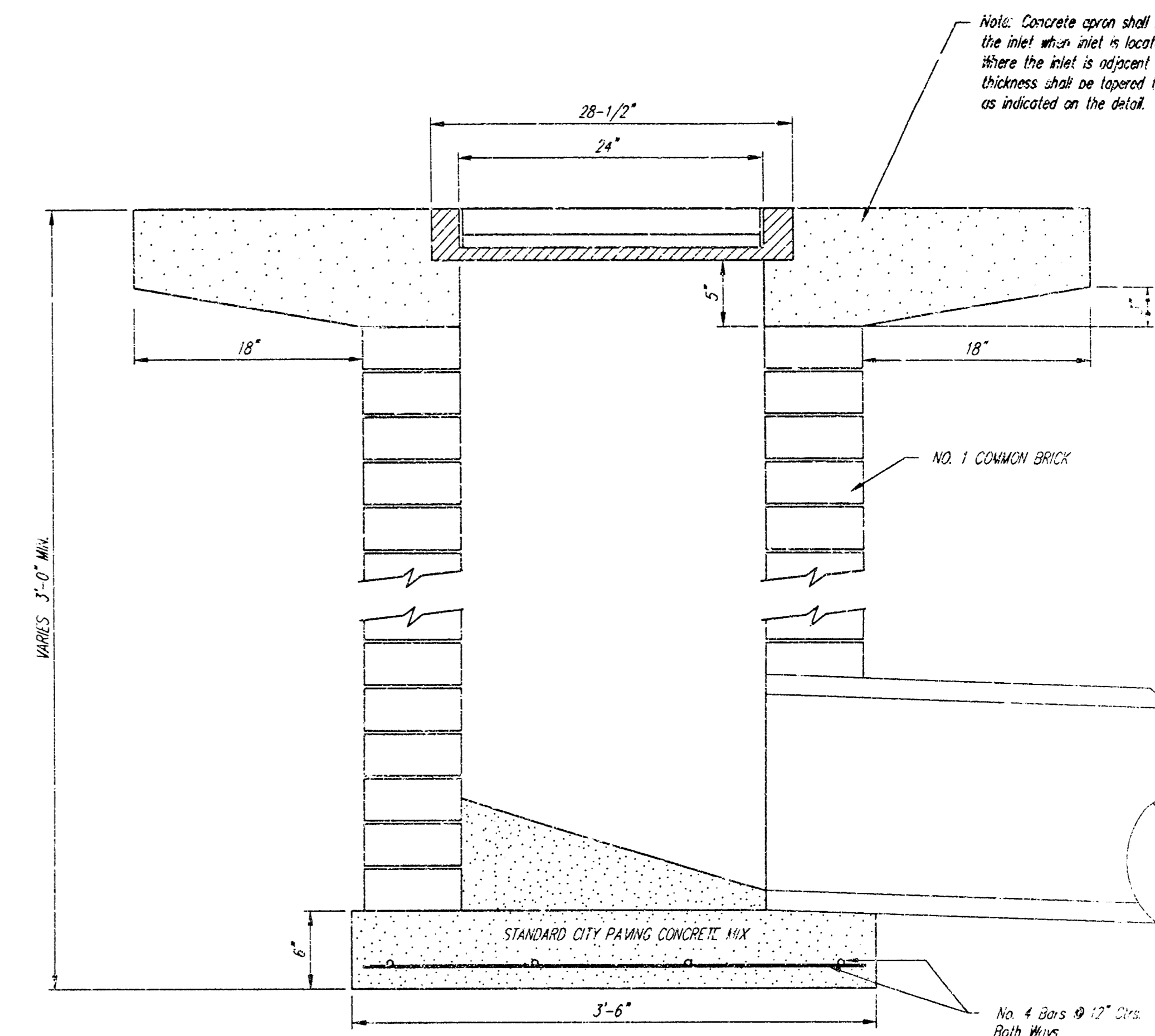
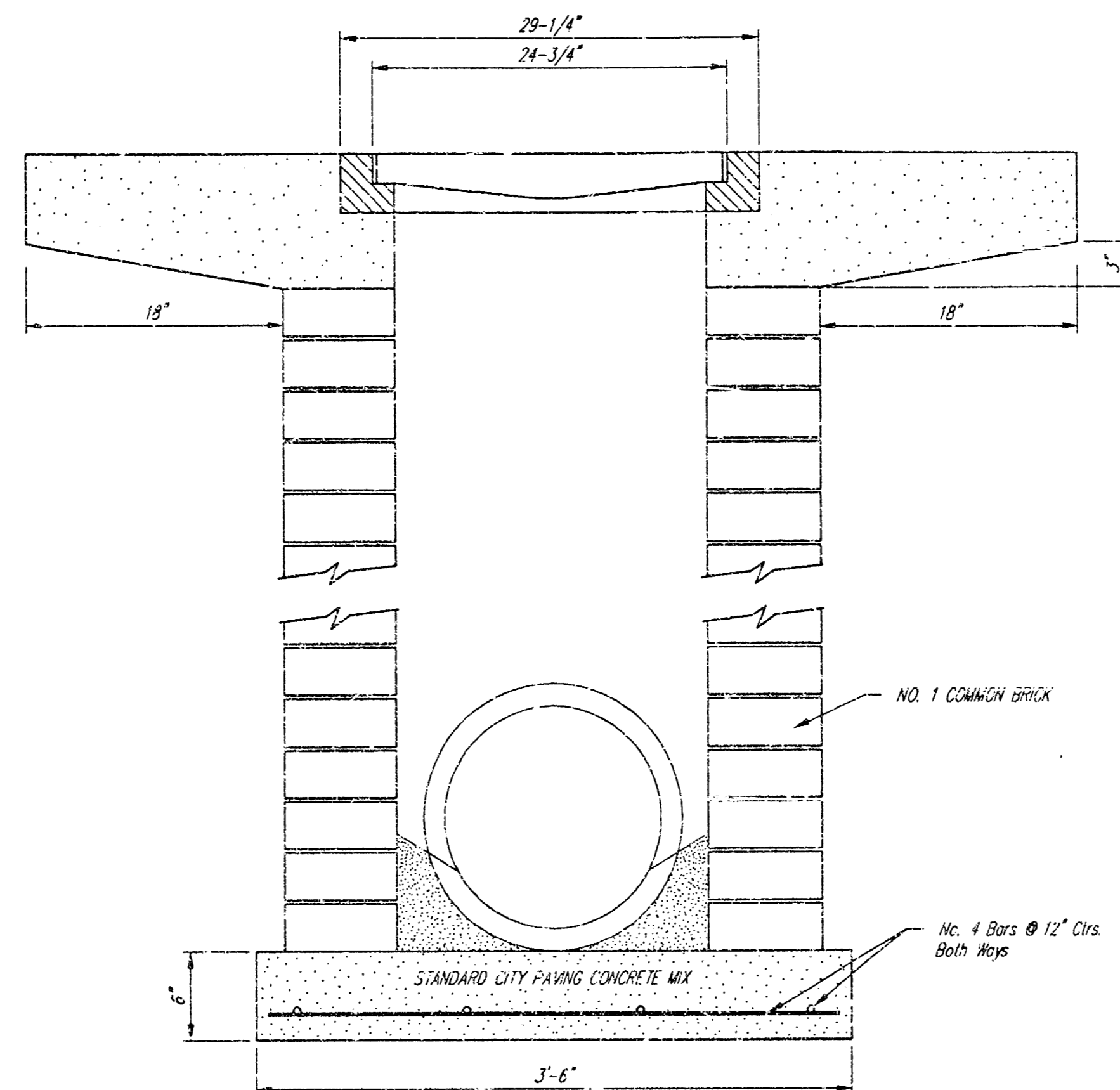
DEETER #2433 GRATE

24" x 24" Frame and Grate Detail

NOTE: Grates shall be imprinted on the top surface with "CITY OF WICHITA" using letters at least 1" in height. Other marking methods may be approved by the engineer.



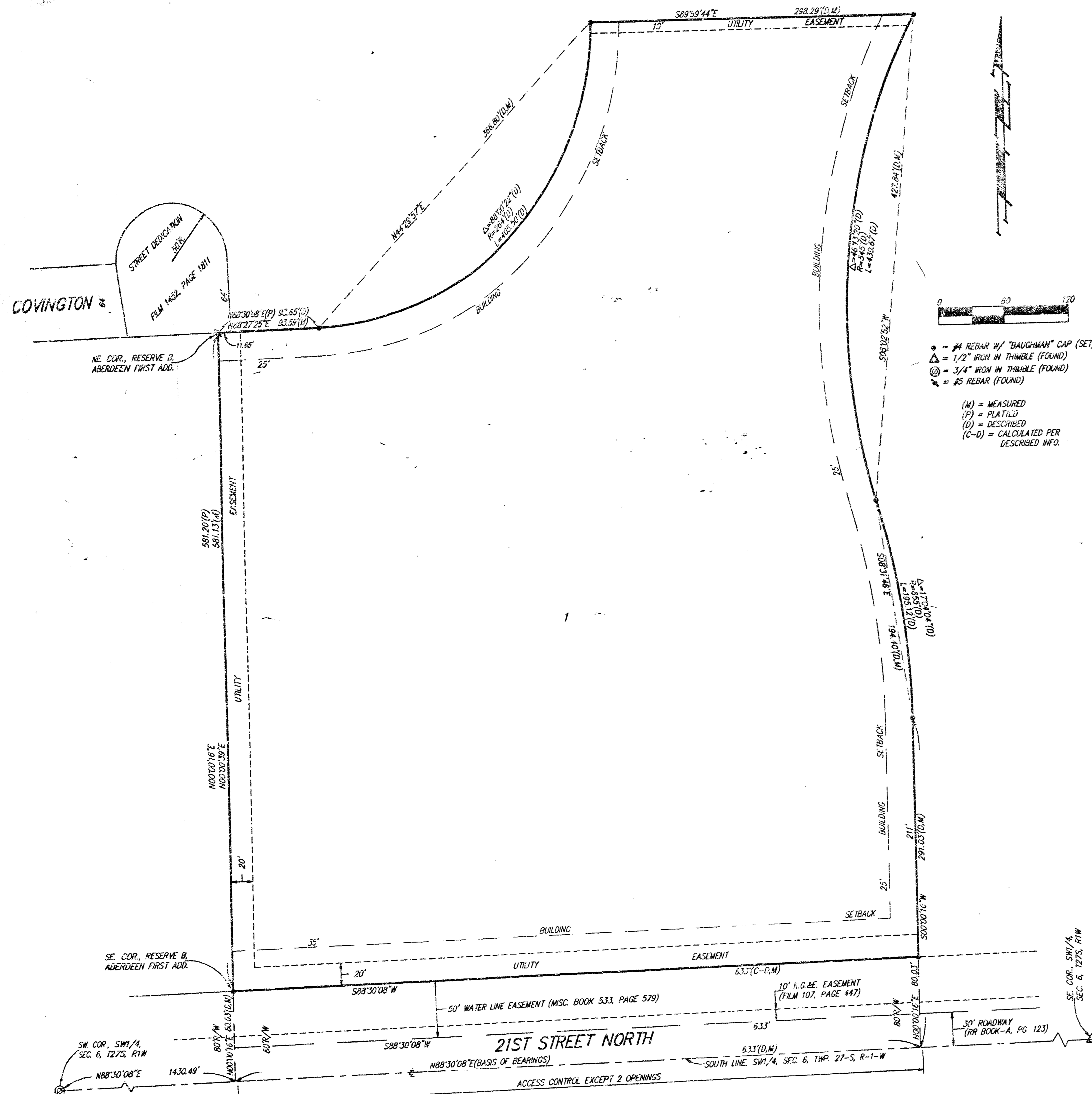
Double 24" x 24" Frame Detail



CITY OF WICHITA  
**STANDARD DROP INLET**  
 Evangelical Assembly of God Addition  
**BAUGHMAN COMPANY P.A.**  
 ENGINEERING, SURVEYING, & PLANNING  
 116-269-2271 • 716 ELLIS • WICHITA, KANSAS 67201

DESIGN STAFF		DRAWN STAFF		APPROVED	DATE	SCALE	
				KCH	10/00	AS SHOWN	
PROJECT NUMBER						SHEET	
1021 PPS (S079S1)						3	
						OF 4	

# EVANGEL ASSEMBLY OF GOD ADDITION WICHITA, SEDGWICK COUNTY, KANSAS



BENCHMARK:  
119TH W. & 21ST N. - CITY OF WICHITA DISC, SE. COR. OF INTERSECTION,  
67' S. & 46' E. OF & BOTH. 79' S. OF & 93.10' SE. OF SEC. COR. IRON.  
ELEV = 172.08 CITY DATUM

SHEFFORD & 21ST N. - CITY OF WICHITA DISC, SE. COR. OF INTERSECTION,  
67' S. & 46' E. OF & BOTH. 79' S. OF & 93.10' SE. OF SEC. COR. IRON.  
ELEV = 172.08 CITY DATUM

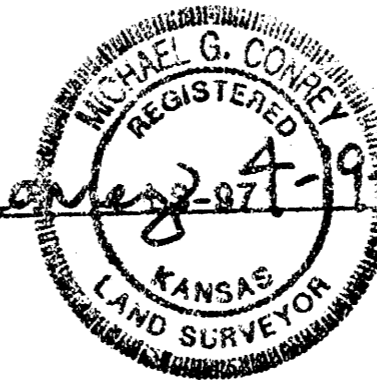
State of Kansas ) SS We, Baughman Company P.A., Surveyors in  
County of Sedgwick )  
aforesaid county and state do hereby certify that, under the supervision  
of the undersigned, we have surveyed and platted "EVANGEL ASSEMBLY  
OF GOD ADDITION", Wichita, Sedgwick County, Kansas and that the  
accompanying plat is a true and correct exhibit of the property surveyed,  
described as follows: Beginning at the SE. Corner of Reserve B, Aberdeen  
First Addition, Wichita, Sedgwick County, Kansas; thence N00°00'16"E along  
the east line of said Reserve B, 581.20 feet to the NE. Corner of said  
Reserve B; thence N88°30'08"E along the south line of Covington as  
extended east, 93.65 feet to the P.C. of a curve to the left, thence  
northeasterly along said curve, having a central angle of 88°00'22" and  
a radius of 366.80 feet bearing 144°29'57"E; thence S89°59'44"E,  
298.29 feet to the P.C. of a curve to the left, thence southerly along  
said curve, having a central angle of 46°13'20" and a radius of 545 feet,  
an arc distance of 439.67 feet, (having a chord length of 427.84 feet  
bearing S06°02'52"W), to the P.R.C. of a curve to the right; thence  
southerly along said curve, having a central angle of 170°4'04" and a  
radius of 655 feet, an arc distance of 195.12 feet, (having a chord  
length of 194.40 feet bearing S08°31'46"E), to the P.I. of said curve;  
thence S00°00'16"W, 281.03 feet to a point on the south line of said SW1/4;  
thence S88°30'08"W along the south line of said SW1/4, 633 feet to a  
point of intersection of the south line of said SW1/4 with the east line  
of said Reserve B as extended south; thence N00°00'16"E along said  
extended east line, 80.03 feet to the point of beginning.

All being situated in the SW1/4 of Sec. 6, Twp. 27-S, R-1-W  
of the 6th P.M., Sedgwick County, Kansas.

Existing public easements and dedications being vacated by  
virtue of K.S.A. 12-512(b).

Baughman Company, P.A.

Michael B. Conroy Surveyor  
Michael G. Conroy



Know all men by these presents that we, the undersigned  
have caused the land described in the Surveyors certificate to be  
platted into a lot and a street to be known as "EVANGEL ASSEMBLY  
OF GOD ADDITION", Wichita, Sedgwick County, Kansas. The utility  
easements are hereby granted as indicated for the construction and  
maintenance of all public utilities. The street is hereby dedicated to  
and for the use of the public. All abutters rights of access to or  
from 21st Street North over and across the south line of Lot 1 are  
hereby granted to the City of Wichita, Kansas provided, however, that  
Lot 1 shall have access to 21st Street North at two locations as shall  
be determined by the City Engineer of the City of Wichita, Kansas.  
The Minimum Building Pad Elevation for the lowest opening to the  
structures on Lot 1 shall be 156.5 City Datum (1353.9 M.S.L.).

Evangel Assembly of God, Wichita, Kansas

Vance A. Cauthon, Pastor  
Vance A. Cauthon

Josephine Setterlund, Secretary  
Josephine Setterlund

Nicholas L. Easter, Trustee  
Nicholas L. Easter

State of Kansas ) SS The foregoing instrument acknowledged before me,  
Sedgwick County )  
this 31st day of June, 1996, by Vance A. Cauthon, Pastor, and  
Josephine Setterlund, Secretary, and Nicholas L. Easter, Trustee, all of  
Evangel Assembly of God, Wichita, Kansas, on behalf of Evangel Assembly of  
God, Wichita, Kansas.

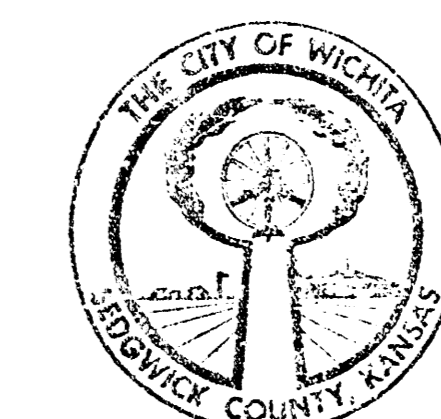
[Signature] Notary Public

This plat of "EVANGEL ASSEMBLY OF GOD ADDITION",  
Wichita, Sedgwick County, Kansas, has been submitted to and approved  
by the Wichita-Sedgwick County Metropolitan Area Planning Commission,  
Wichita, Kansas.  
Dated this 14th day of March, 1996.  
Wichita-Sedgwick County Metropolitan Area Planning Commission.

Susan Osborne-Howes Chair  
Susan Osborne-Howes

Marvin S. Krout Secretary  
Marvin S. Krout

This plat approved and all dedications  
shown hereon accepted by the City Council of the City of Wichita,  
Kansas, this 11th day of June, 1996.



Bob Knight Mayor  
Bob Knight

Pat Burnett City Clerk  
Pat Burnett

Entered on transfer record this 27th day  
of June, 1996.

#1537772

Susan E. Crockett-Spoon County Clerk  
Susan E. Crockett-Spoon



State of Kansas ) SS This is to certify that this plat has been  
Sedgwick County )  
filed for record in the office of the Register of Deeds, this 28th day  
of June, 1996, at 10:02 o'clock A.M. and is duly  
recorded.

Pat Kettler Register of Deeds  
Pat Kettler

Diana Manheimer Deputy  
DIANA MANHEIMER

We, the undersigned, holders of a mortgage  
on the above described property, do hereby consent to this plat of  
"EVANGEL ASSEMBLY OF GOD ADDITION", Wichita, Sedgwick County, Kansas.  
Assemblies of God Ministers Benefit Association, a Missouri Religious Corporation

Ethel M. Campbell  
Ethel M. Campbell, Exec. Dir.

State of Missouri ) SS The foregoing instrument acknowledged before me,  
Greene County )  
this 23rd day of April, 1996, by  
Ethel M. Campbell, executive director, of Assemblies of God  
Ministers Benefit Association, a Missouri Religious Corporation, on behalf  
of the corporation.

[Signature] Notary Public  
19 03 01 18