

PROJECT NUMBER <b>1033 PPS (807861)</b>				AM NO. 00252	
DESIGN pd	DRAWN bd	FILE pps-1	DATE 8/00	SCALE 1"=20'	Keness Heart Hospital <b>SWS Improvements</b> 3801 N. Webb, Wichita, Kansas
					SHEET <b>2</b> OF <b>2</b> REVISIONS 9/29/00

**STORM WATER SEWER IMPROVEMENTS TO SERVE  
LOT 11, 12, 24 COMOTARA INDUSTRIAL PARK FOURTH ADDITION  
KANSAS HEART HOSPITAL OFFICE PLAZA**

Project Number  
**1033 PPS(607861)**

**CITY OF WICHITA, KANSAS**

Michael E. Lindebak, P. E., City Engineer

**GENERAL NOTES**

1. Contractor will be required to provide notice to utility companies a minimum of twenty-four (24) hours prior to any excavation, as follows:

Kansas One-Call 687-2470

The Contractor must notify the following in case of an emergency:

Cablevision	262-4270
or	263-2161
K.P.L. Gas Service Company	393-8630
Kansas Gas & Electric Company	363-8630
Peoples Natural Gas	942-3811
or	1-800-393-0357
Southwestern Bell Telephone Company	1-571-2611
City of Wichita Water Department	268-4908
City of Wichita Sewer Department	268-4071

2. Exist. utilities and their locations, as shown on the plans, represent the best information obtainable for design. Location information has been obtained from the various utility companies and is either from company record drawings or company-provided field locations. The Contractor will be required to work around existing utilities which do not conflict with proposed construction.

3. The Contractor to verify utility locations prior to construction of this project.

4. Utility service and installation shall be coordinated with the respective utility owners. Contacts are:

K&E Gas	Steve Orth	261-6867
K.G. & E.	Milas Capps	251-6434
Wichita Water	Paul Bryant	268-4555
	Steve Palmer	268-4908
Southwestern Bell	Jim Tobin	268-2759

5. All areas disturbed by construction shall be seeded with rye Rebel II Fescure grass at a rate of 350 lbs./acre immediately following construction in that area.

6. Traffic affected by the construction of this project shall be handled in accordance with the latest edition of the Manual on Uniform Traffic Control Devices.

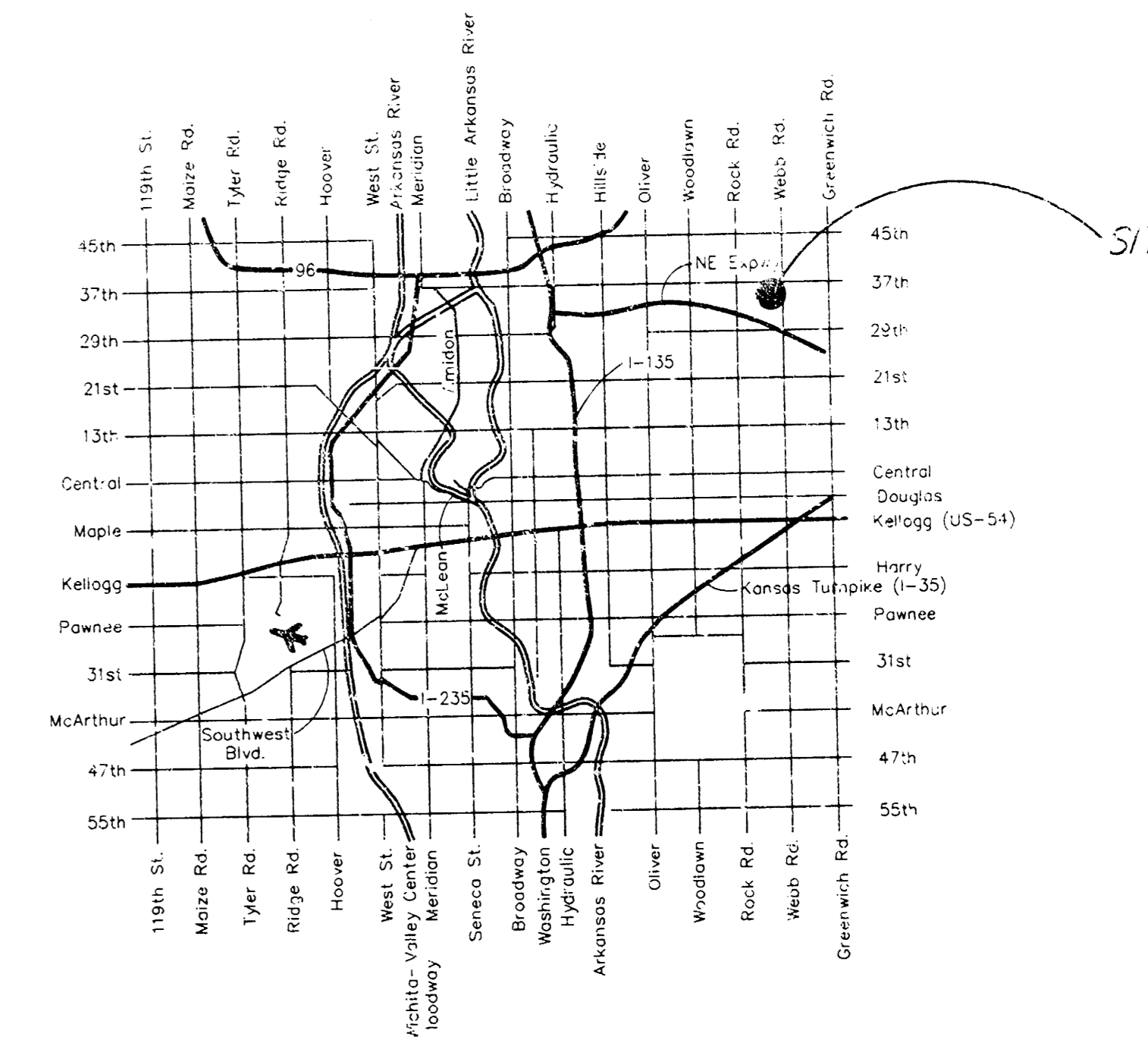
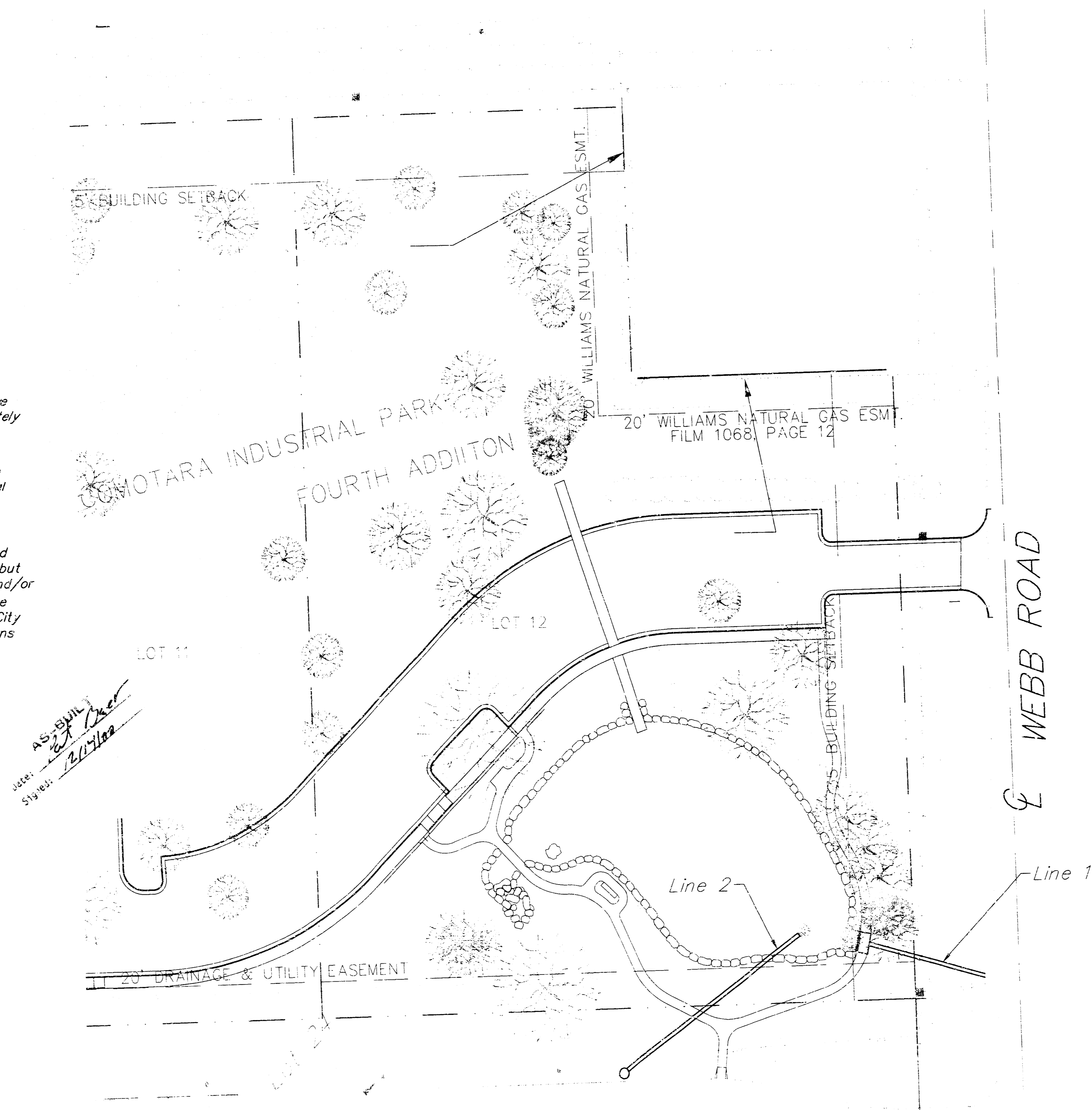
7. All lawn/turf areas disturbed by construction of proposed improvements shall be restored with the same grass/sod as existing. Restoration of disturbed areas shall include, but not be limited to, top soil preparation, seeding, mulch and/or reseeding. All seeding/sodding work shall be in accordance with the City of Wichita standard specifications and the City of Wichita administrative regulation No. AR78 which governs cleanup and replacement following construction. All costs for this work shall be subsidiary to the lump sum price bid for "Site Restoration."

**BENCHMARK:**

Temporary Bench Mark. Box cut top North Curb 34th St. 100+/- west of Center Webb Rd. Elev. 244.04

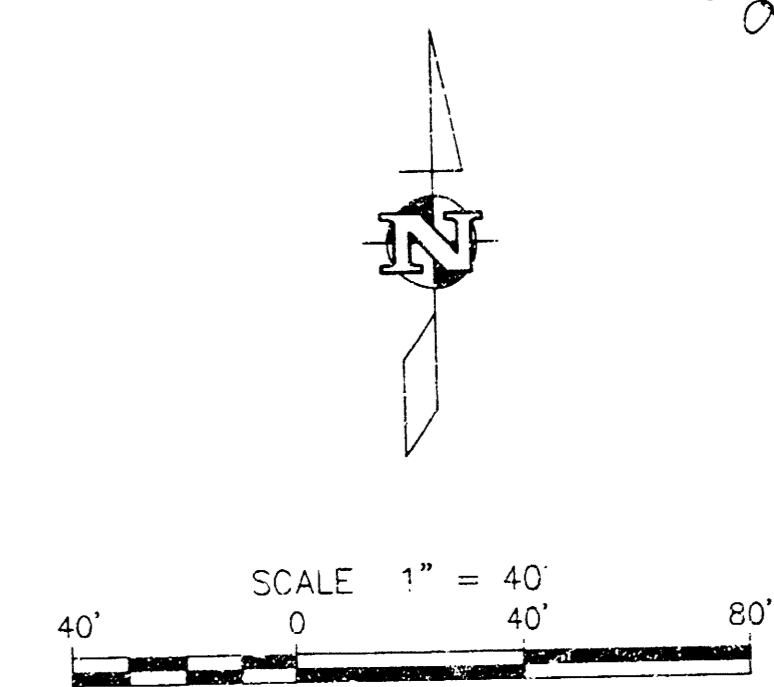
**INDEX:**

1. Title Sheet
2. Plan and Profile of Line 1
2. Plan and Profile of Line 2



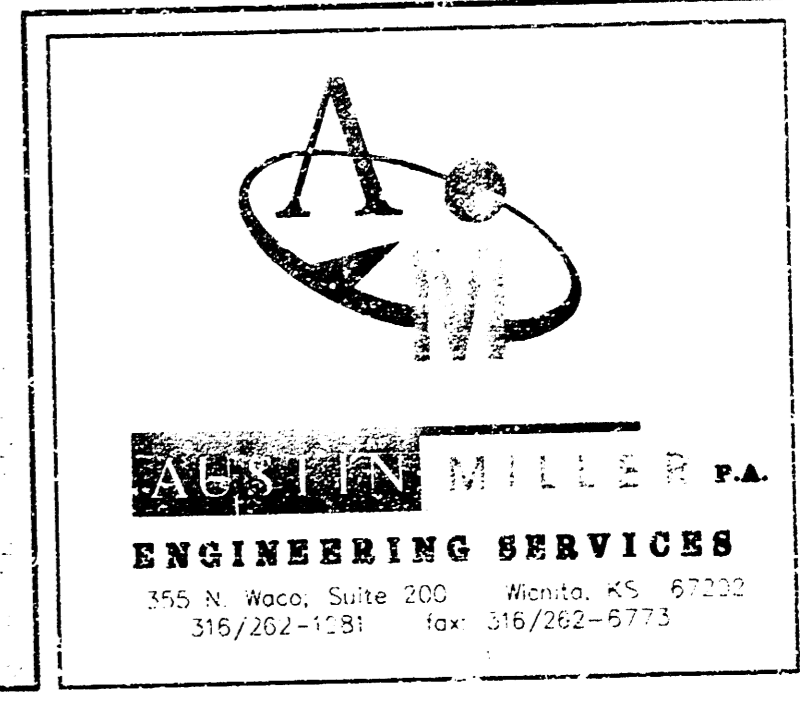
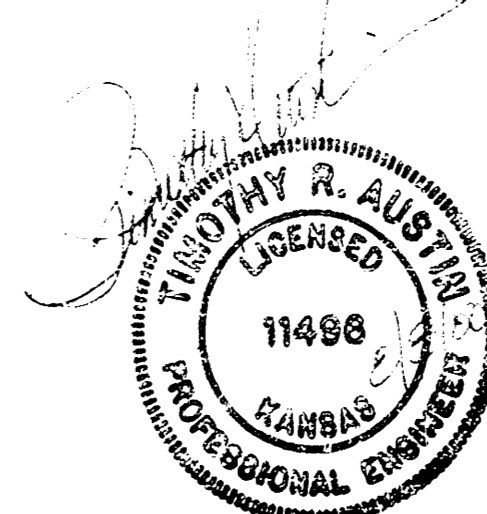
**LOCATION MAP**

BOOKED  
9-12-01  
MEL  
D-516



APPROVED AS NOTED BY CITY ENGINEER OF WICHITA  
STORM SEWERS VRH 8/8/00

Inspection and testing for this project are to be provided by a Licensed Consulting Engineering Firm under contract with the Owner/Developer. Said inspection is to be in accordance with the City of Wichita standard construction engineering practices and verified by a Licensed Prof. Engineer. No work shall be performed in dedicated easements or public right-of-way by the Contractor without such inspection nor shall work be commenced without written authorization by the City Engineer. All construction and materials shall comply with the City of Wichita Specifications and Standards (on file and available in the City Engineer's Office).



**STORM WATER SEWER IMPROVEMENTS TO SERVE  
LOT 11, 12, 24 COMOTARA INDUSTRIAL PARK FOURTH ADDITION**

**KANSAS HEART HOSPITAL OFFICE PLAZA**

Project Number  
**1033 PPS(607861)**

**CITY OF WICHITA, KANSAS**

Michael E. Lindebak, P. E., City Engineer

**GENERAL NOTES**

- Contractor will be required to provide notice to utility companies a minimum of twenty-four (24) hours prior to any excavation, as follows:  

Kansas One-Call	687-2470
-----------------	----------

The Contractor must notify the following in case of an emergency:

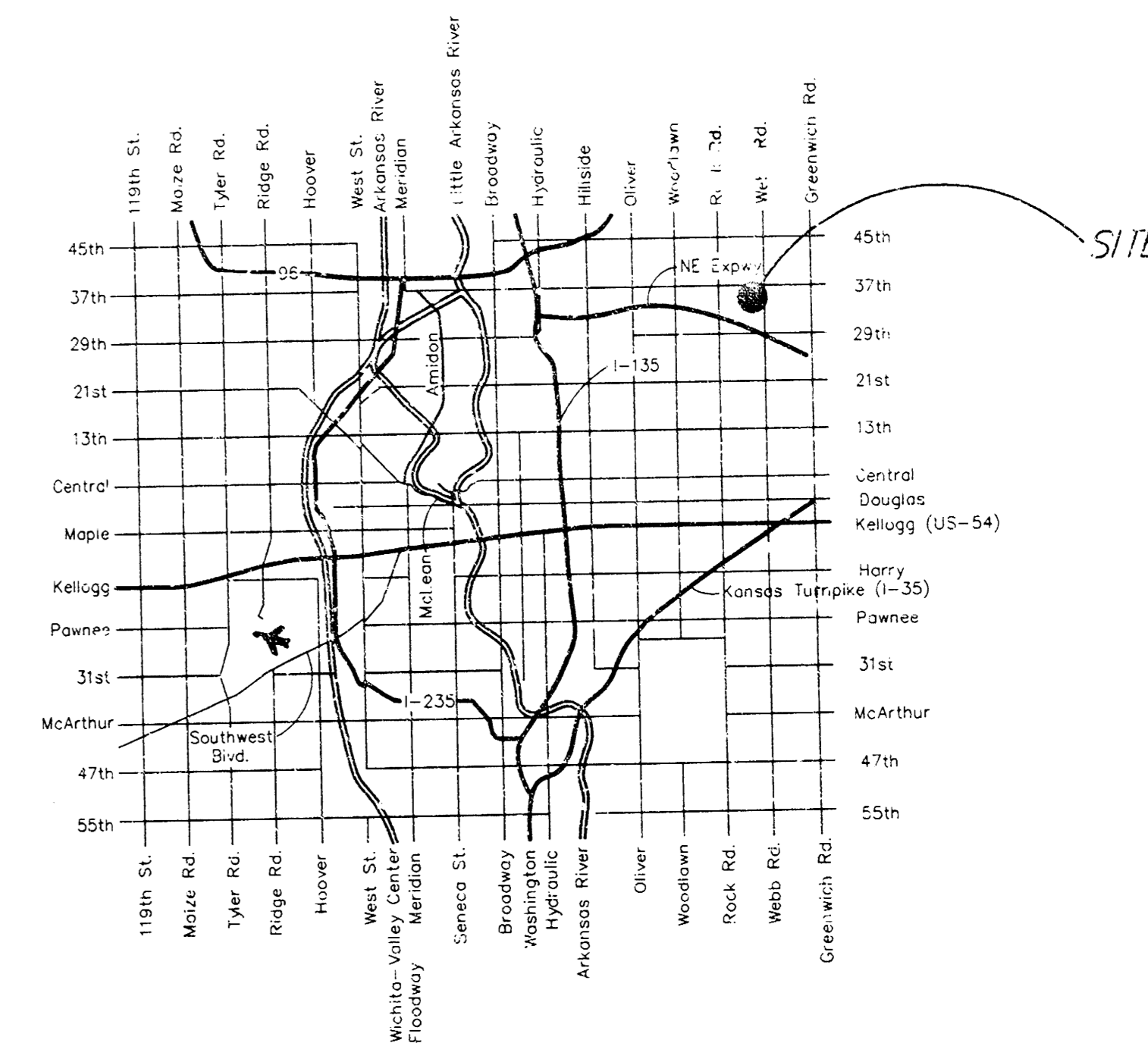
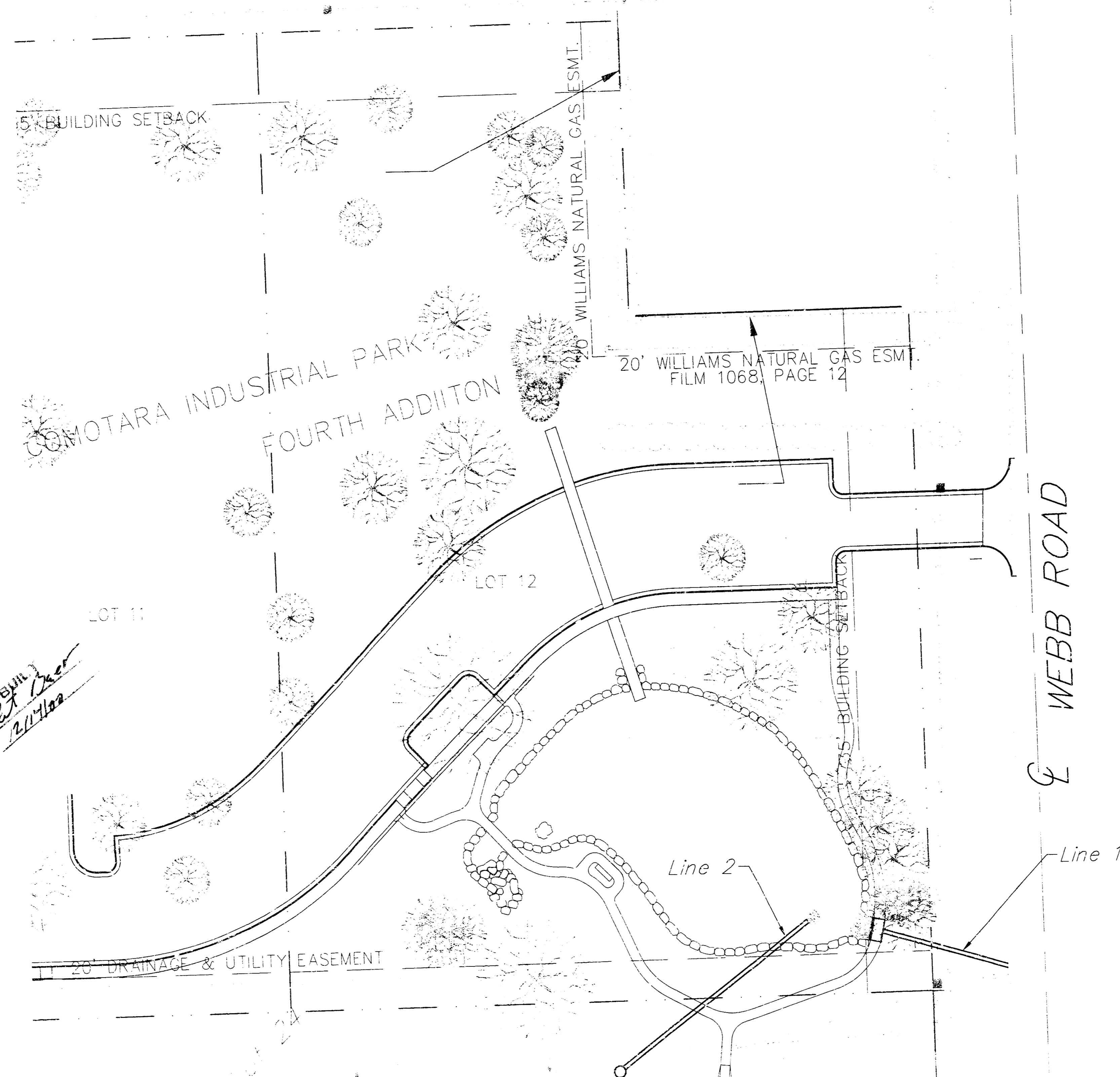
Cablevision	252-4270
or	263-2061
K.P.L. Gas Service Company	383-8550
Kansas Gas & Electric Company	383-8600
Peoples Natural Gas	942-8811
or	1-800-303-0357
Southwestern Bell Telephone Company	1-571-2611
City of Wichita Water Department	268-4908
City of Wichita Sewer Department	268-4071
- Exist. utilities and their locations, as shown on the plans, represent the best information obtainable for design. Location information has been obtained from the various utility companies and is either from company record drawings or company-provided field locations. The Contractor will be required to work around existing utilities which do not conflict with proposed construction.
- The Contractor to verify utility locations prior to construction of this project.
- Utility service and installation shall be coordinated with the respective utility owners. Contacts are:  

KG&E Gas	Steve Orth	261-6057
K.G. & E.	Miles Capps	261-6434
Wichita Water	Paul Bryant	268-4555
	Steve Palmer	268-4908
Southwestern Bell	Jim Tabin	268-2759
- All areas disturbed by construction shall be seeded with rye. Rebel II Fescure grass at a rate of 350 lbs./acre immediately following construction in that area.
- Traffic affected by the construction of this project shall be handled in accordance with the latest edition of the Manual on Uniform Traffic Control Devices.
- All lawn/turf areas disturbed by construction of proposed improvements shall be restored with the same grass/sod as existing. Restoration of disturbed areas shall include, but not be limited to, top soil preparation, seeding, mulch and/or reseeded. All seeding/sodding work shall be in accordance with the City of Wichita standard specifications and the City of Wichita administrative regulation No. AR78 which governs cleanup and replacement following construction. All costs for this work shall be subsidiary to the lump sum price bid for "Site Restoration."

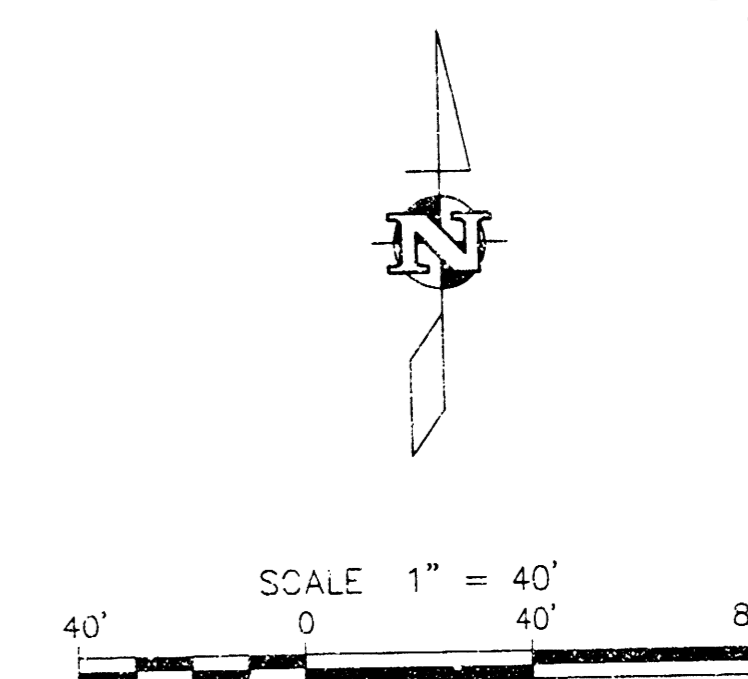
**BENCHMARK:**  
Temporary Bench. Mark. Box cut top  
North Curb 34th St. 100+/- west  
of Center Webb Rd. Elev. 244.04

**INDEX:**

- Title Sheet
- Plan and Profile of Line 1
- Plan and Profile of Line 2



**LOCATION MAP**



BOOKED  
9-12-01  
MCS  
T-516

APPROVED AS NOTED BY CITY ENGINEER OF WICHITA  
 STORM SEWERS: VRH 8/8/00  
 Inspection and testing for this project are to be provided by a Licensed Consulting Engineering Firm under contract with the Owner/Developer. Soil inspection is to be in accordance with the City of Wichita standard construction engineering practices and certified by a Licensed Professional Engineer. No work shall be performed in Jurisdictional easements or public right-of-way by the Contractor without such inspection nor shall work be commenced without written authorization by the City Engineer. All construction and materials shall comply with the City of Wichita Specifications and Standards (on file and available in the City Engineer's Office).

