

— proposed final contours

* TRANSITION FROM EXISTING STREET ELEVATION TO NEW PARKING PAVEMENT.

Doreen Moore
8-21-00

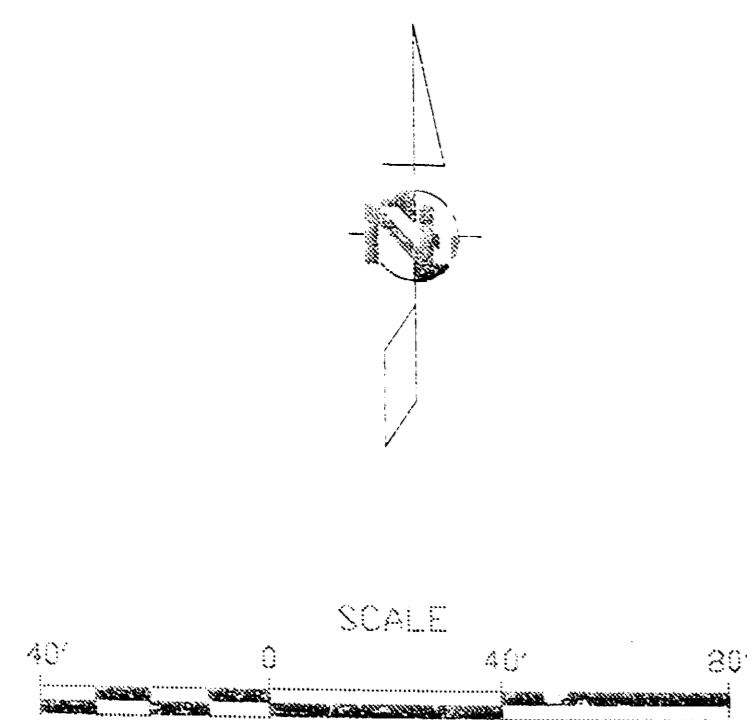
INTEGRATED SOLUTIONS.
ENVIRONMENTAL, HEALTH AND SAFETY CONSULTANTS
WICHITA, KS

**LOT 4, ROCK ISLAND INDUSTRIAL PARK
GRADING AND DRAINAGE**

KEY MAP - GRADING

DATE: 8/21/00
DRAWN BY: [Signature]
CHECKED BY: [Signature]

2 / 5

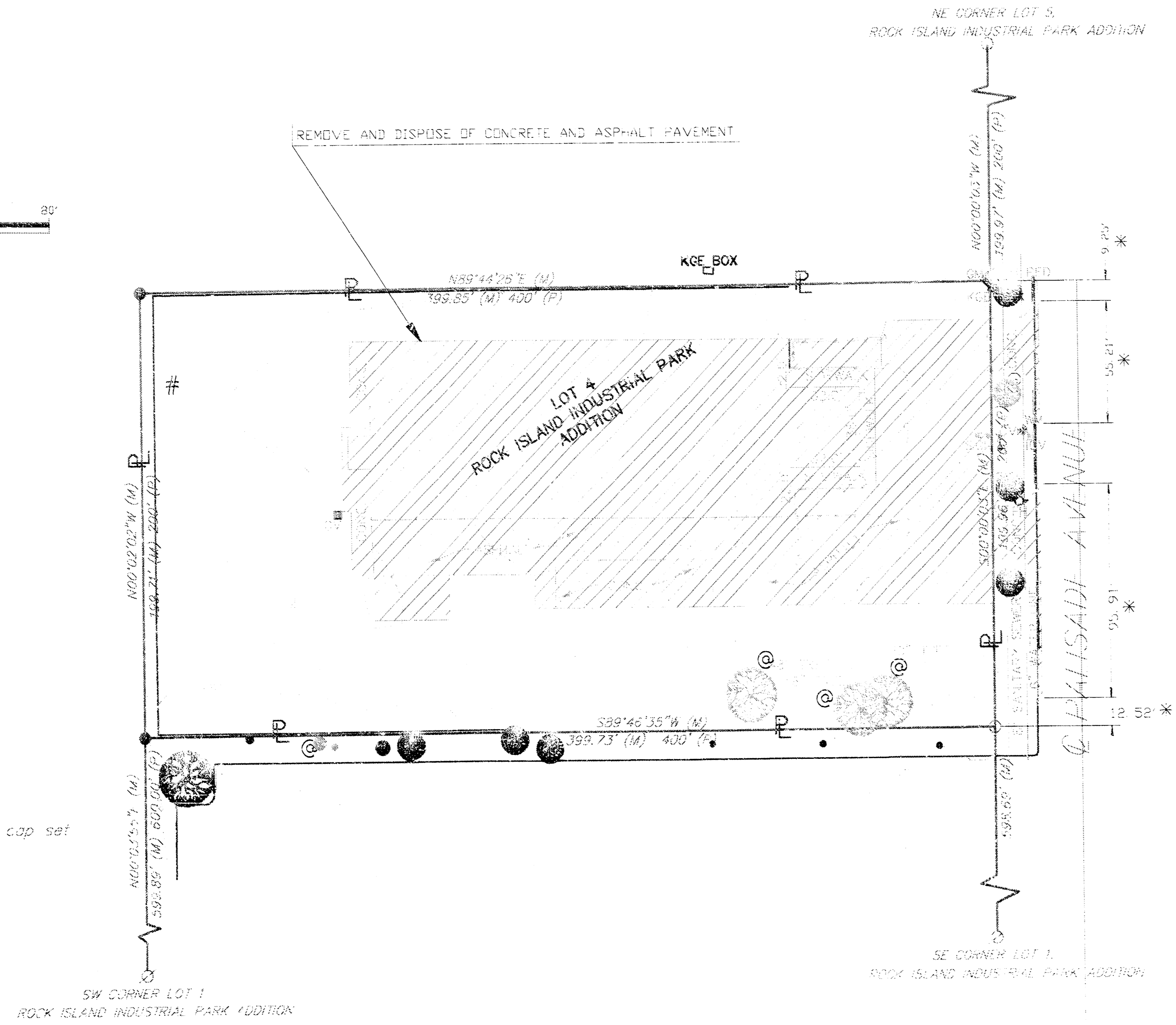


LEGEND:

- ◉ gas meter
- ⊕ water meter
- power pole
- ⊙ light pole
- ⊕ water valve
- ⊕ irrigation control valve
- ⊕ traffic sign
- ⊕ fire hydrant
- ⊕ - calculated
- M - measured
- P - plotted
- rebar found
- iron pipe found
- ⊕ rebar 5/8" w/ AMPA CLS104 cap set
- ⊕ rebar w/ SIB cap found

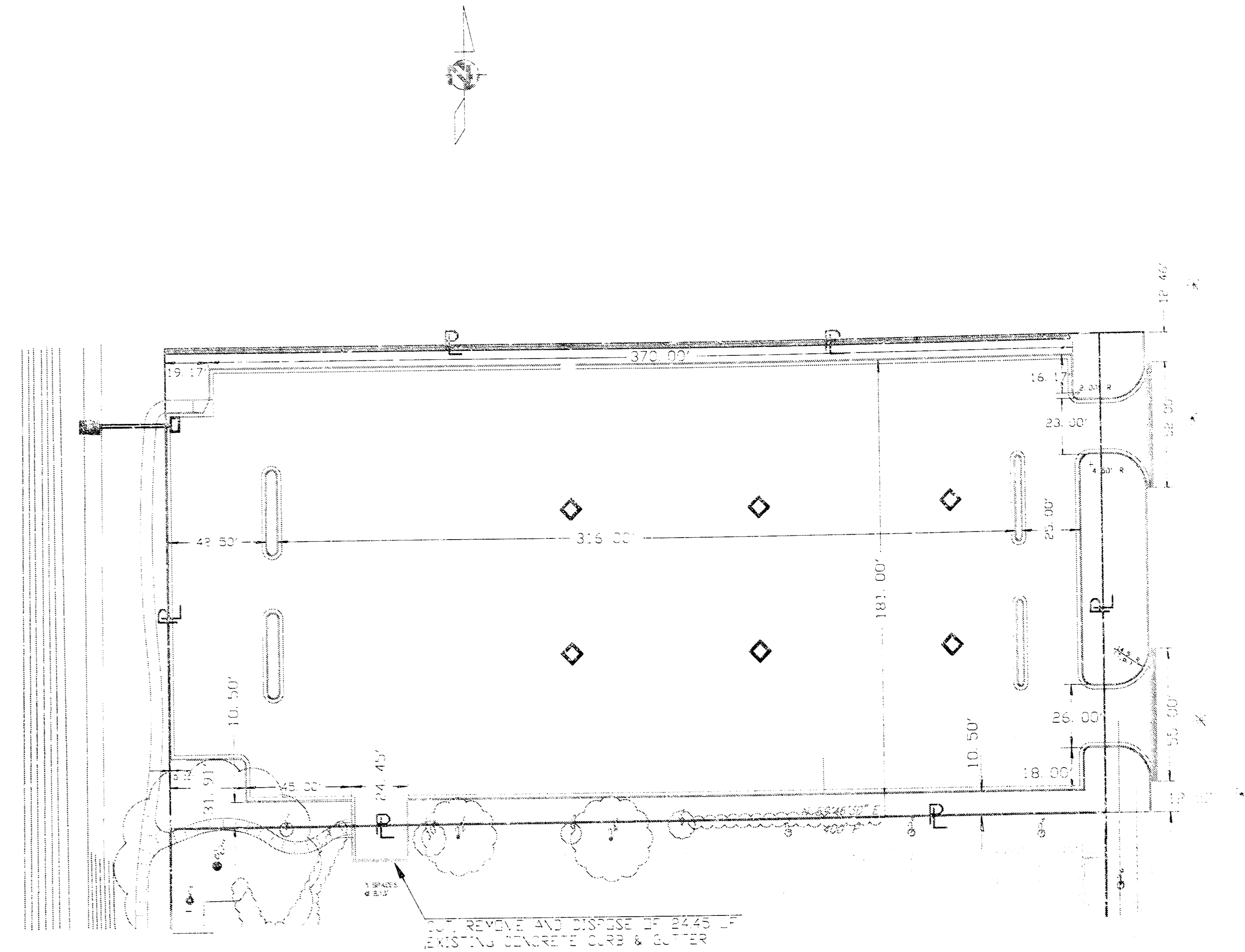
BENCHMARKS

□ cut on top of SW corner brick wall around sign at NE corner of the intersection of Palisade and 47th Street South. Elev = 89.72 (City Datum)



EXISTING TOPOGRAPHY

- * CUT AND REMOVE CONCRETE CURB AND GUTTER TO THESE DIMENSIONS
- @ REMOVE AND DISPOSE OF TREES INDICATED
- # REMOVE AND DISPOSE OF CHAIN LINK FENCE



PAVING DIMENSIONS

CONSTRUCT NEW CURB AND GUTTER WITH NEW DRIVE APPROACHES TO THE INDICATED DIMENSIONS. ALL DIMENSIONS ARE TO BACK OF CURB OR TO PROPERTY LINE

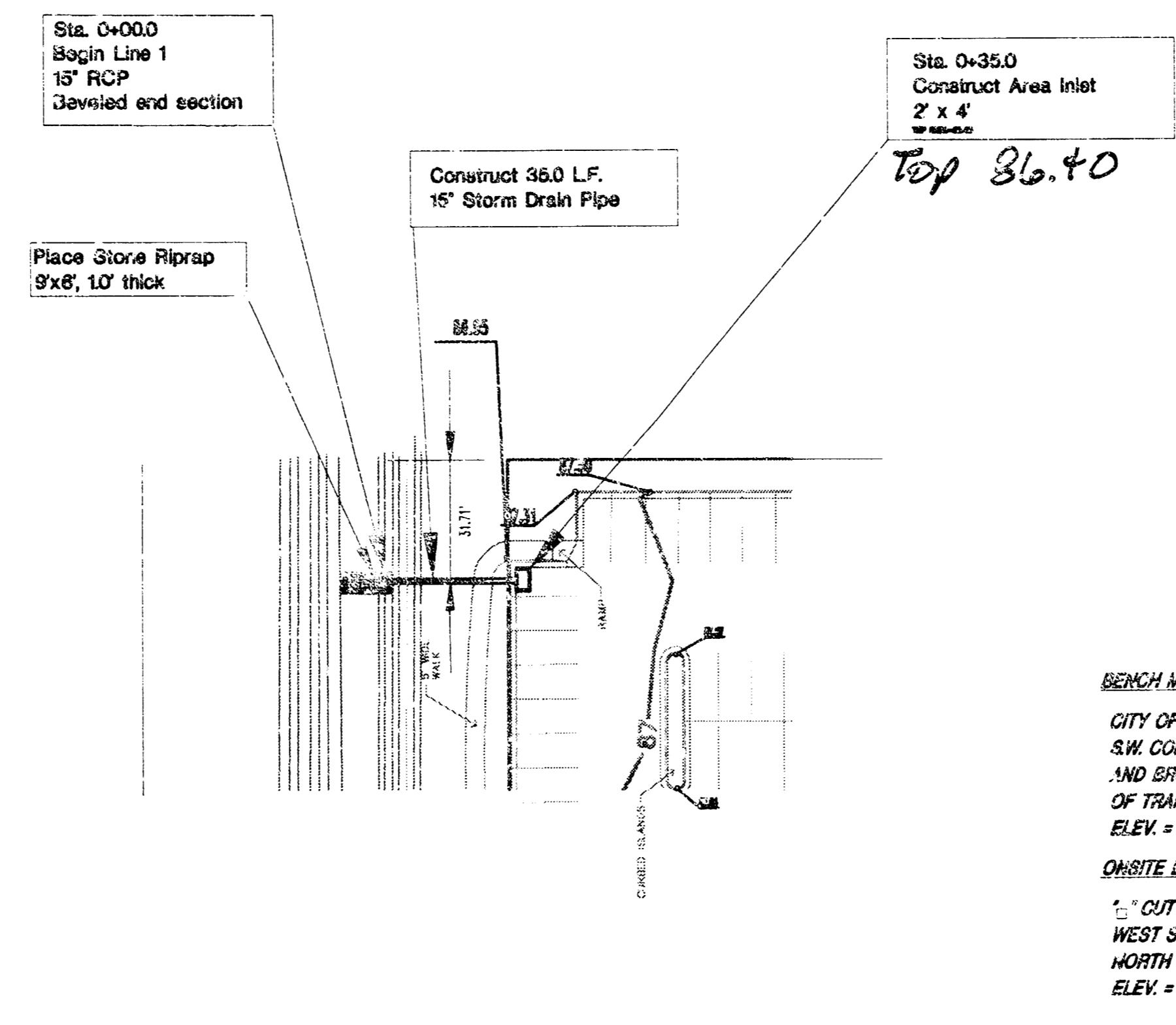
FILL, COMPACTION, SUBGRADE PREPARATION AND PAVEMENT SHALL BE AS RECOMMENDED IN THE 1999 SOILS REPORT

Daniel Lynn Moore
9-21-00



**LOT 4, ROCK ISLAND INDUSTRIAL PARK
STORM WATER SEWER**

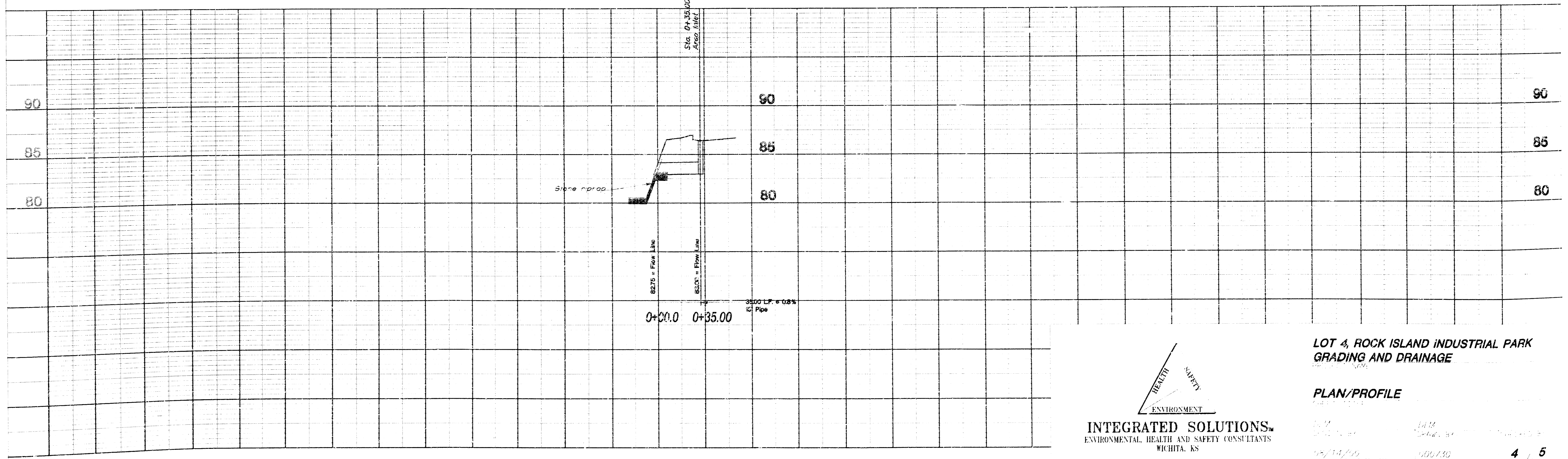
SITE PLAN



HORIZONTAL SCALE: 1"=40'
 VERTICAL SCALE: 1"=5'

Daniel Lynn Moore
 2-21-00

LINE 1



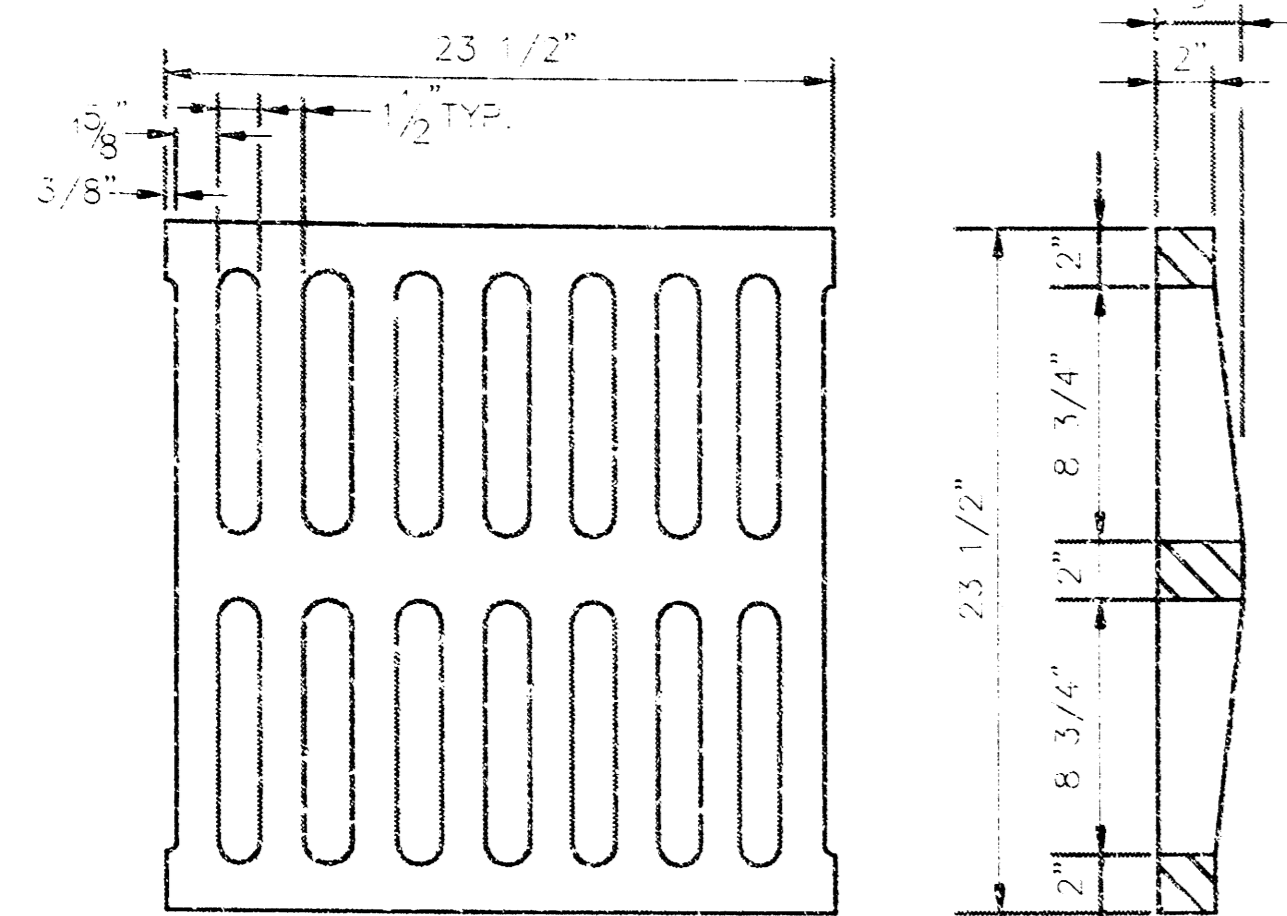
INTEGRATED SOLUTIONS
 ENVIRONMENTAL, HEALTH AND SAFETY CONSULTANTS
 WICHITA, KS

**LOT 4, ROCK ISLAND INDUSTRIAL PARK
 GRADING AND DRAINAGE**

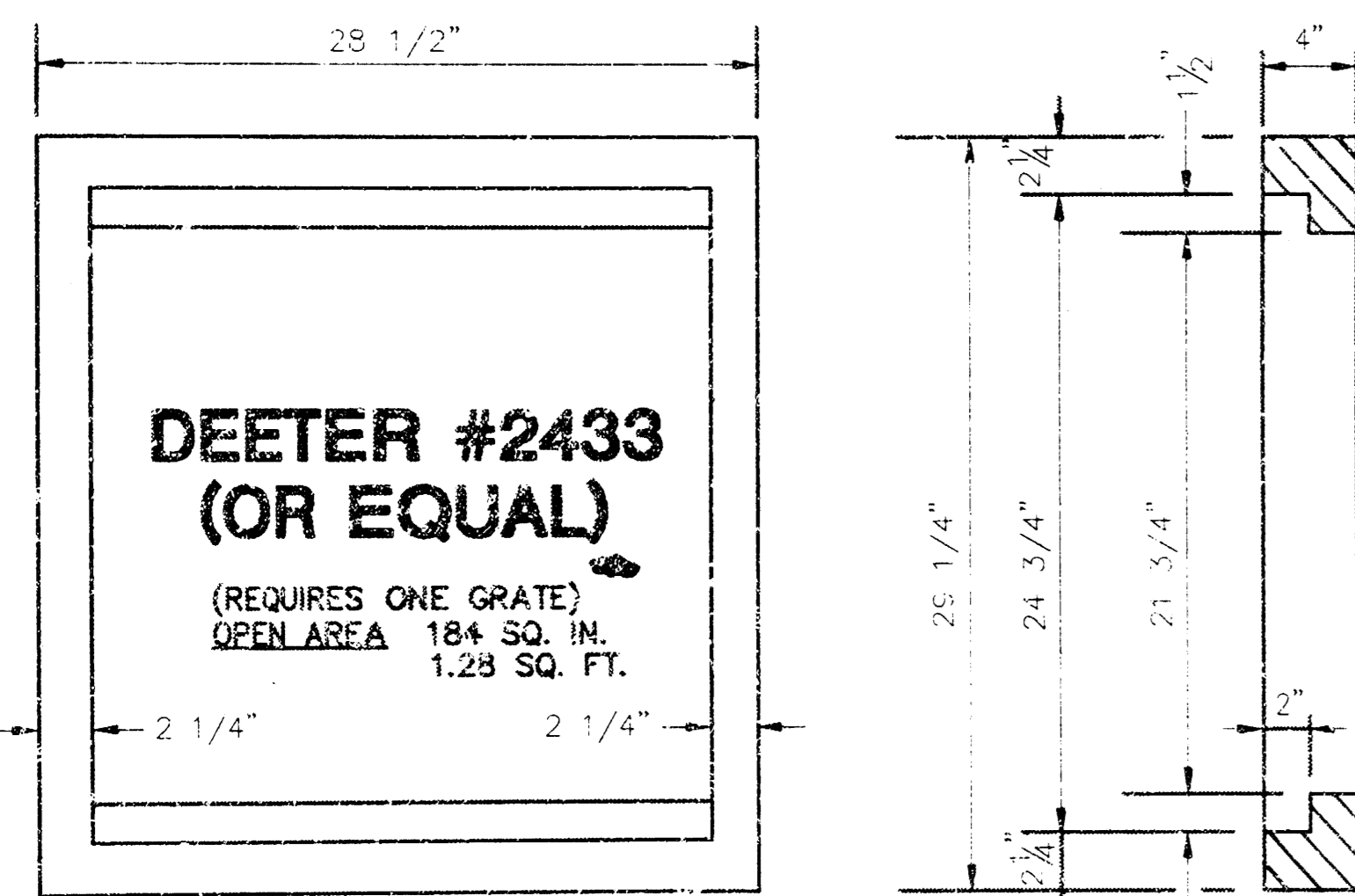
PLAN/PROFILE

DATE: 2/14/00
 DRAWN BY: JLM
 CHECKED BY: JLM
 JOB NO: 000150
 SHEET NO: 4 / 5

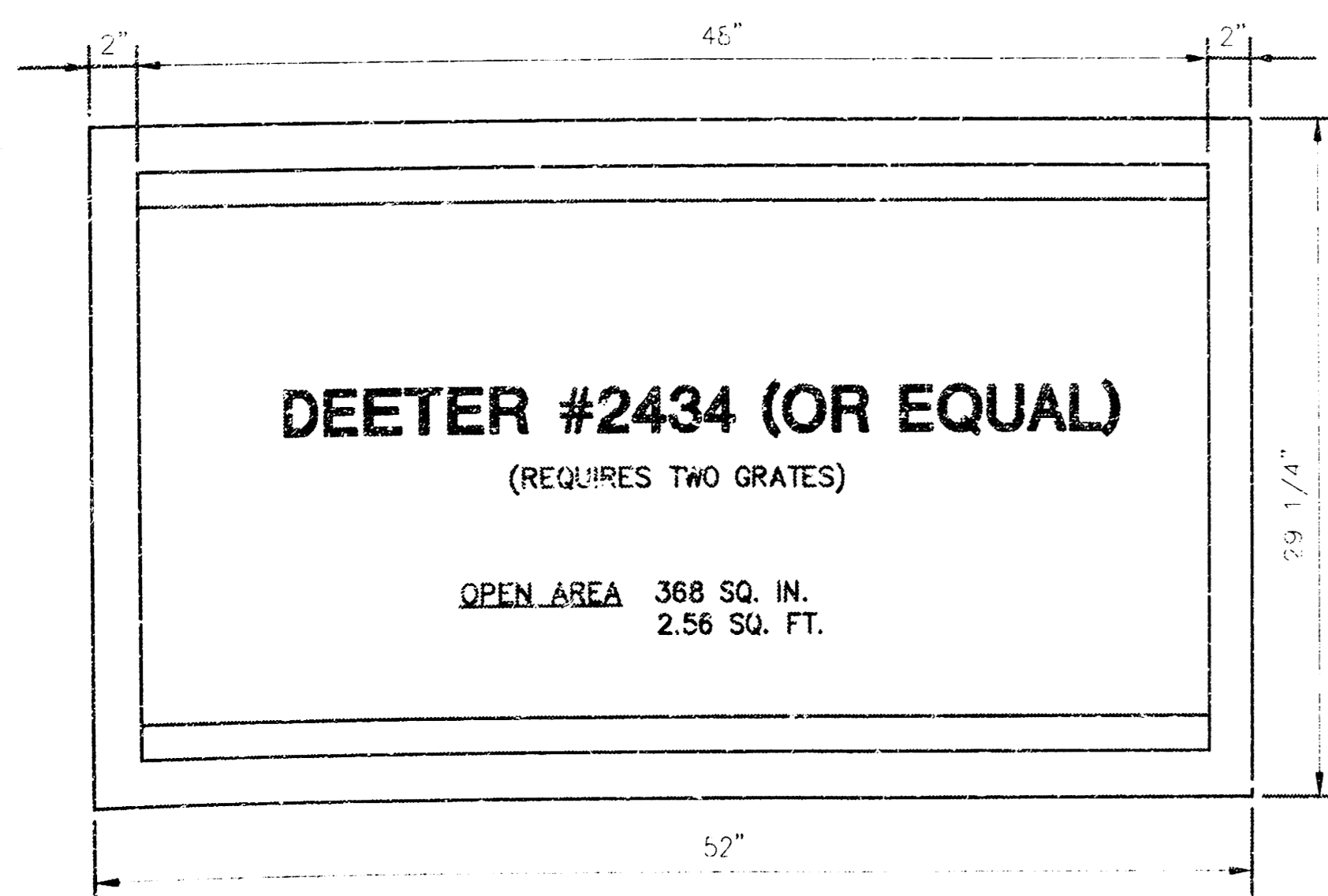
NOTE: GRATES SHALL BE IMPRINTED ON THE TOP SURFACE WITH "CITY OF WICHITA" USING LETTERS AT LEAST 1" IN HEIGHT. OTHER MARKING METHODS MAY BE USED ONLY IF APPROVED BY THE ENGINEER.



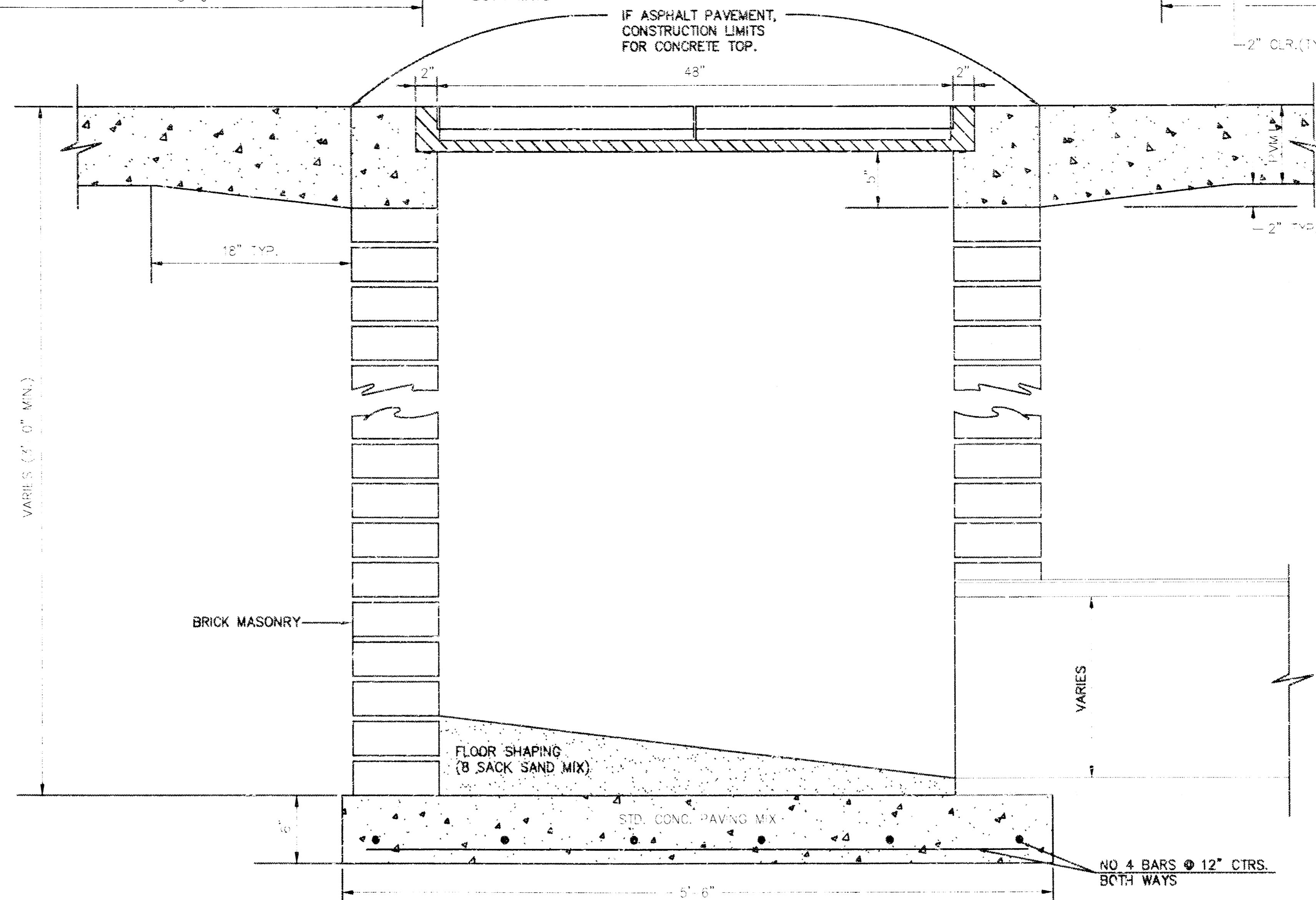
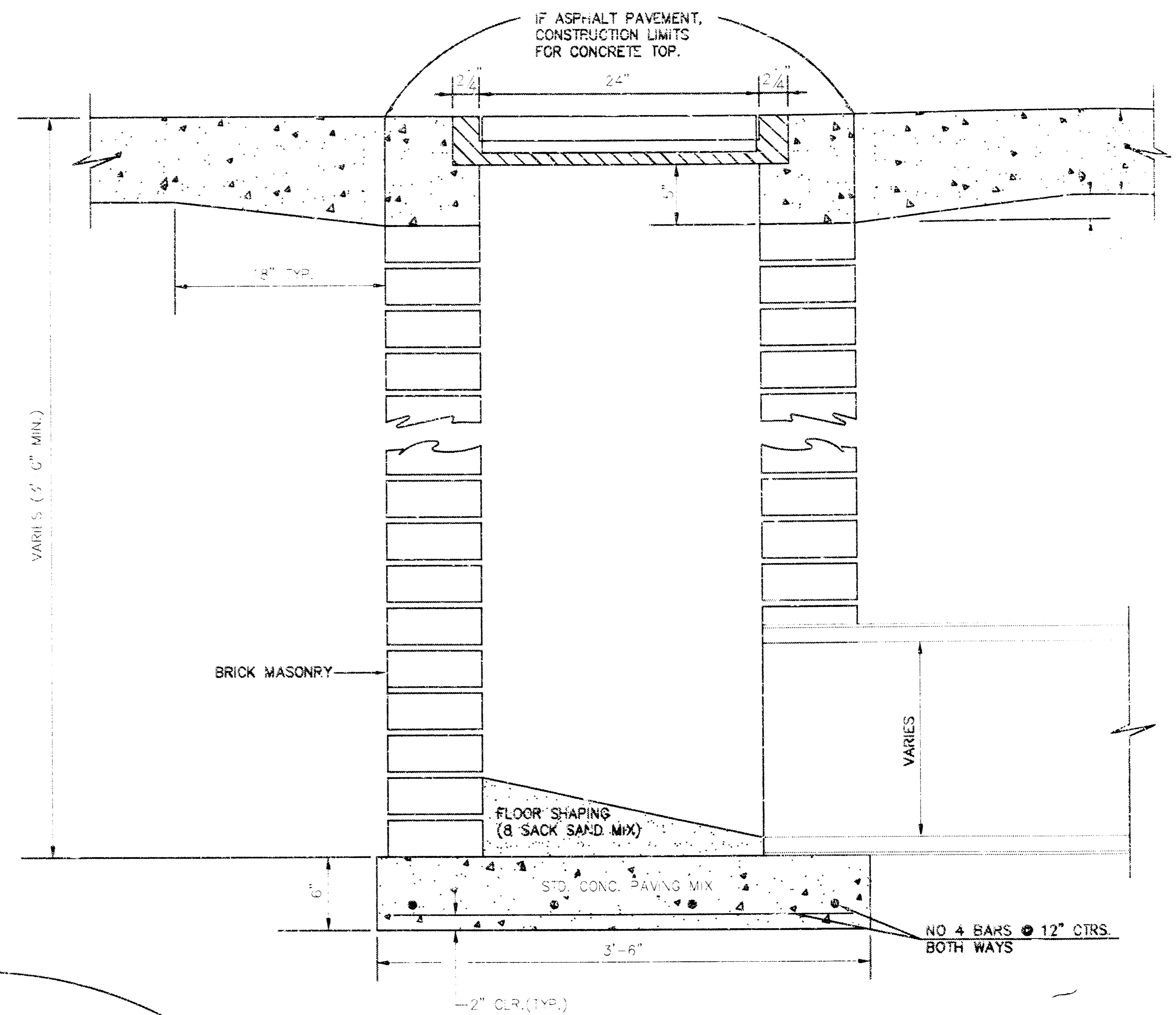
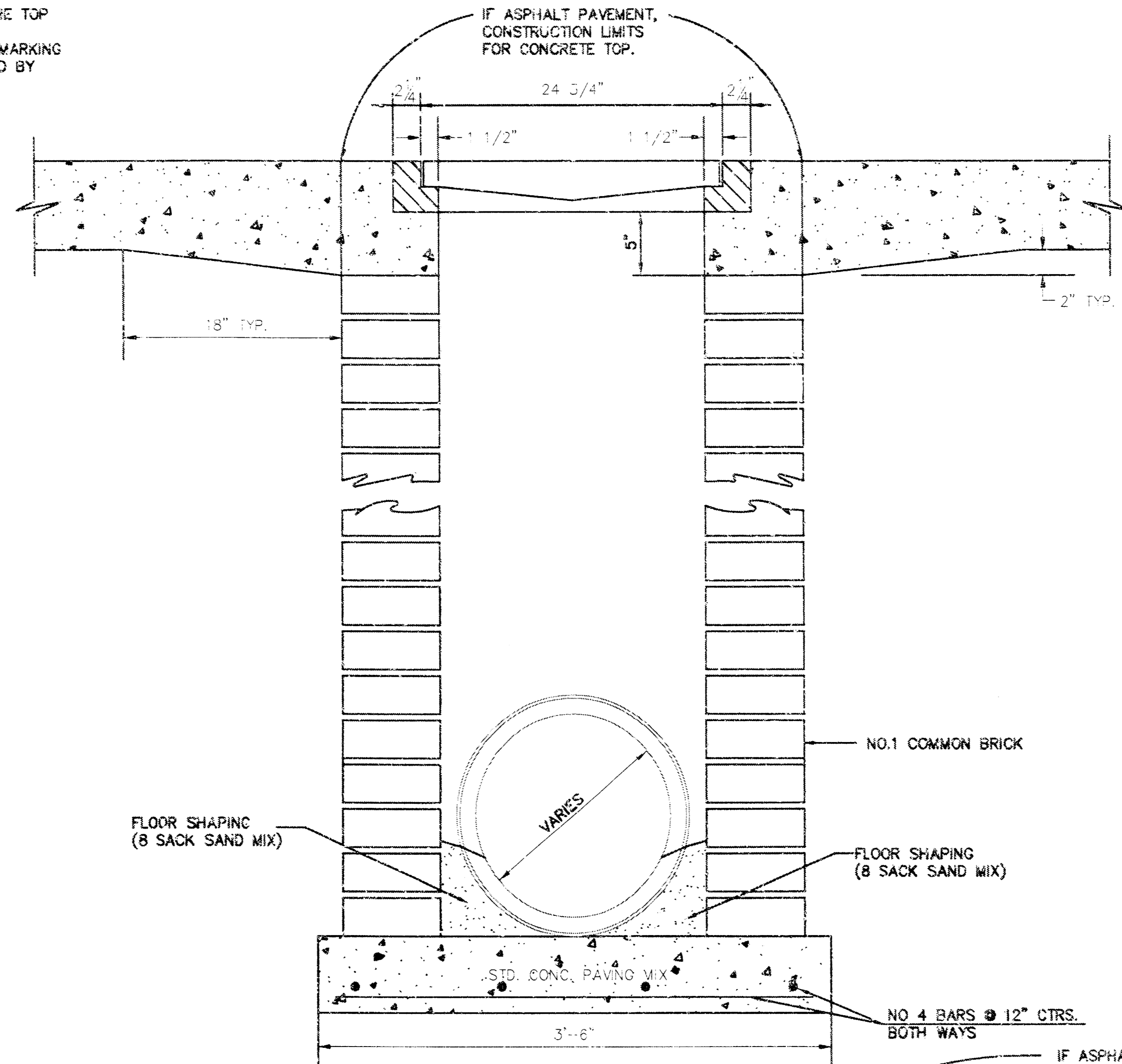
24"x24" GRATE DETAIL



SINGLE 24"x24" FRAME DETAIL



DOUBLE 24"x24" FRAME DETAIL



ORIFICE EQUATION		
$Q = C^*A^* \sqrt{2gh}$ $C = 0.60$		
h (DEPTH)	#2433 (SINGLE)	#2434 (DOUBLE)
0.1	1.95 cfs	3.89 cfs
0.2	2.75 cfs	5.50 cfs
0.3	3.37 cfs	6.74 cfs
0.4	3.89 cfs	7.78 cfs
0.5	4.35 cfs	8.70 cfs
0.6	4.77 cfs	9.53 cfs
0.7	5.15 cfs	10.30 cfs
0.8	5.50 cfs	11.01 cfs
0.9	5.84 cfs	11.67 cfs
1.0	6.15 cfs	12.30 cfs

REVISED: 5-3-80 JNJ

DROP INLET DETAILS

CITY OF WICHITA, KANSAS
 Design: C.O.W. Checked by: _____ Checked by: _____
 Drawn by: _____ Date: _____ Date: _____ Job No. _____