

# CONSTRUCTION PLANS FOR STORM WATER SEWER

TO SERVE

## ASBURY UNITED METHODIST CHURCH

2801 W. 15th Street

Wichita, Sedgwick County, Kansas

CITY OF WICHITA, KANSAS

M.E. LINDEBAK

CITY ENGINEER

PRIVATE PROJECT NO. 1043 PPS

OCA # 607861

August 2000

APPROVED AS NOTED  
BY CITY ENGINEER OF WICHITA

Sanitary Sewer \_\_\_\_\_

Storm Sewers VRH 10/5/00

Driveway Approaches \_\_\_\_\_

Water Mains \_\_\_\_\_

Paving \_\_\_\_\_

NOTE TO CONTRACTOR

INSPECTION AND TESTING FOR THIS PROJECT IS TO BE PROVIDED BY A LICENSED CONSULTING ENGINEERING FIRM UNDER CONTRACT WITH THE OWNER/DEVELOPER. SAID INSPECTION IS TO BE IN ACCORDANCE WITH THE CITY OF WICHITA STANDARD CONSTRUCTION ENGINEERING PRACTICES AND CERTIFIED BY A LICENSED PROFESSIONAL ENGINEER. NO WORK SHALL BE PERFORMED IN DEDICATED EASEMENTS OR THE PUBLIC RIGHT-OF-WAY BY THE CONTRACTOR WITHOUT SUCH INSPECTION NOR SHALL ANY WORK BE COMPLETED IN DEDICATED EASEMENTS OR PUBLIC RIGHT-OF-WAY WITHOUT WRITTEN AUTHORIZATION BY THE CITY ENGINEER.

PROPERTY DESCRIPTION

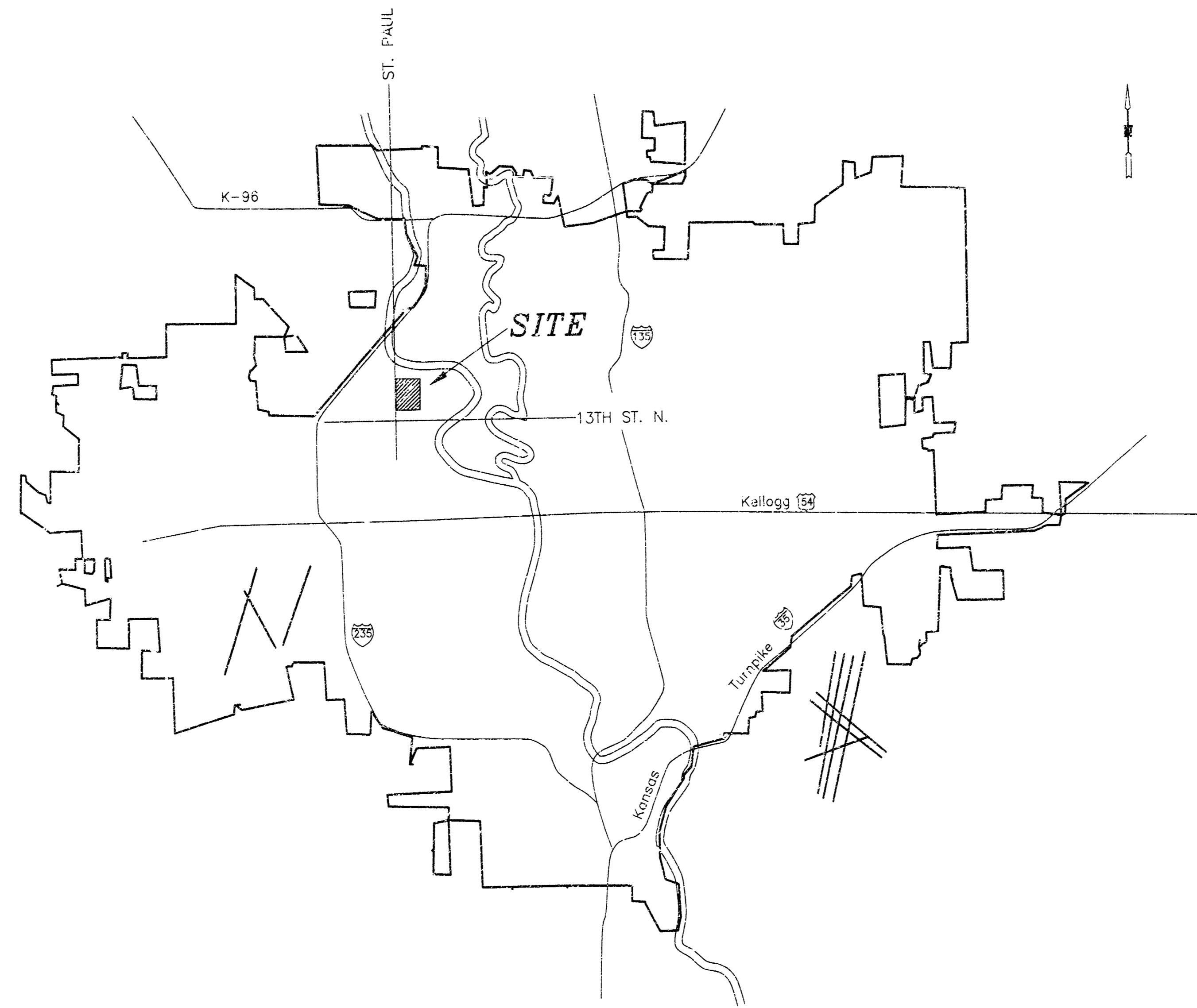
BLOCK B, SANGLIAN'S THIRD ADDITION TO WICHITA, SEDGWICK COUNTY, KANSAS, TOGETHER WITH THE WEST 1/2 OF VACATED EDWARDS AVENUE.

BOOKED  
10-5-01  
M.E.L.  
D-923

NOTES

- THE CONTRACTOR WILL BE REQUIRED TO PROVIDE ADVANCE NOTICE OF TWENTY-FOUR (24) HOURS TO UTILITY COMPANIES PRIOR TO STARTING ANY EXCAVATION AS FOLLOWS:  
KANSAS ONE-CALL 687-2470  
THE CONTRACTOR MUST NOTIFY THE FOLLOWING IN CASE OF EMERGENCY:  

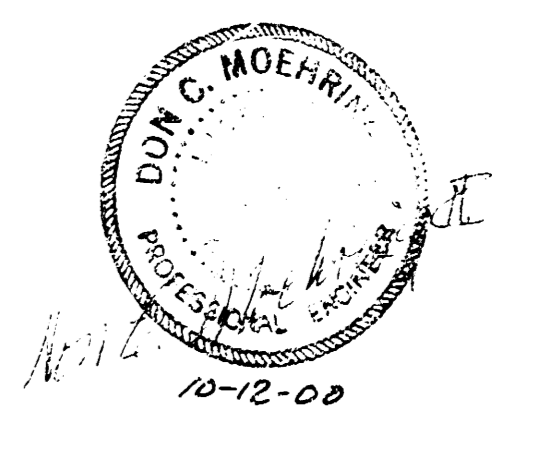
|                                   |                      |
|-----------------------------------|----------------------|
| CABLEVISION                       | 262-4270 OR 263-2061 |
| KANSAS GAS & ELECTRIC (GAS)       | 263-7511             |
| KANSAS GAS & ELECTRIC (ELECTRIC)  | 294-1141             |
| ARKLA GAS COMPANY                 | 942-8350 OR 263-8161 |
| SOUTHWESTERN BELL TELEPHONE       | 1-571-2611           |
| CITY OF WICHITA WATER DEPT.       | 268-4908             |
| CITY OF WICHITA SEWER MAINTENANCE | 268-4071             |
- THE CONTRACTOR SHALL BE RESPONSIBLE FOR PROPERTY IRONS. THE CONTRACTOR WILL BE REQUIRED TO REESTABLISH ANY PROPERTY IRONS WHICH ARE DAMAGED OR DESTROYED BY HIS CONSTRUCTION OPERATIONS. SUCH IRONS SHALL BE REESTABLISHED BY A LICENSED LAND SURVEYOR IN ACCORDANCE WITH STATE LAWS.
- TRAFFIC WILL NOT BE AFFECTED IN THIS AREA OF CONSTRUCTION.
- EXISTING UTILITIES AND THEIR LOCATION, AS SHOWN ON THE PLAN, REPRESENT THE BEST INFORMATION OBTAINABLE FOR DESIGN. LOCATION INFORMATION HAS BEEN OBTAINED FROM THE VARIOUS UTILITY COMPANIES AND IS EITHER FROM COMPANY RECORD DRAWINGS OR COMPANY PROVIDED FIELD LOCATIONS. THE CONTRACTOR WILL BE REQUIRED TO WORK AROUND EXISTING UTILITIES WITHIN THE RIGHT-OF-WAY WHICH DO NOT CONFLICT WITH PROPOSED CONSTRUCTION.
- ALL DISTURBED AREAS TO BE RESEEDING USING TEMPORARY RYE GRASS AT A RATE OF 4 LBS. PER 1,000 SQ. FT. WITHIN 14 DAYS UPON PROJECT COMPLETION. CONTRACTOR SHALL PREPARE GROUND PER CITY SPECIFICATIONS. THE STREET R/W NEEDS TO BE RESTORED PER AP-78.



ALL CITY SPECIFICATIONS TO BE COMPLIED BY DAVE MOHRING PROJECT # 1043

INDEX

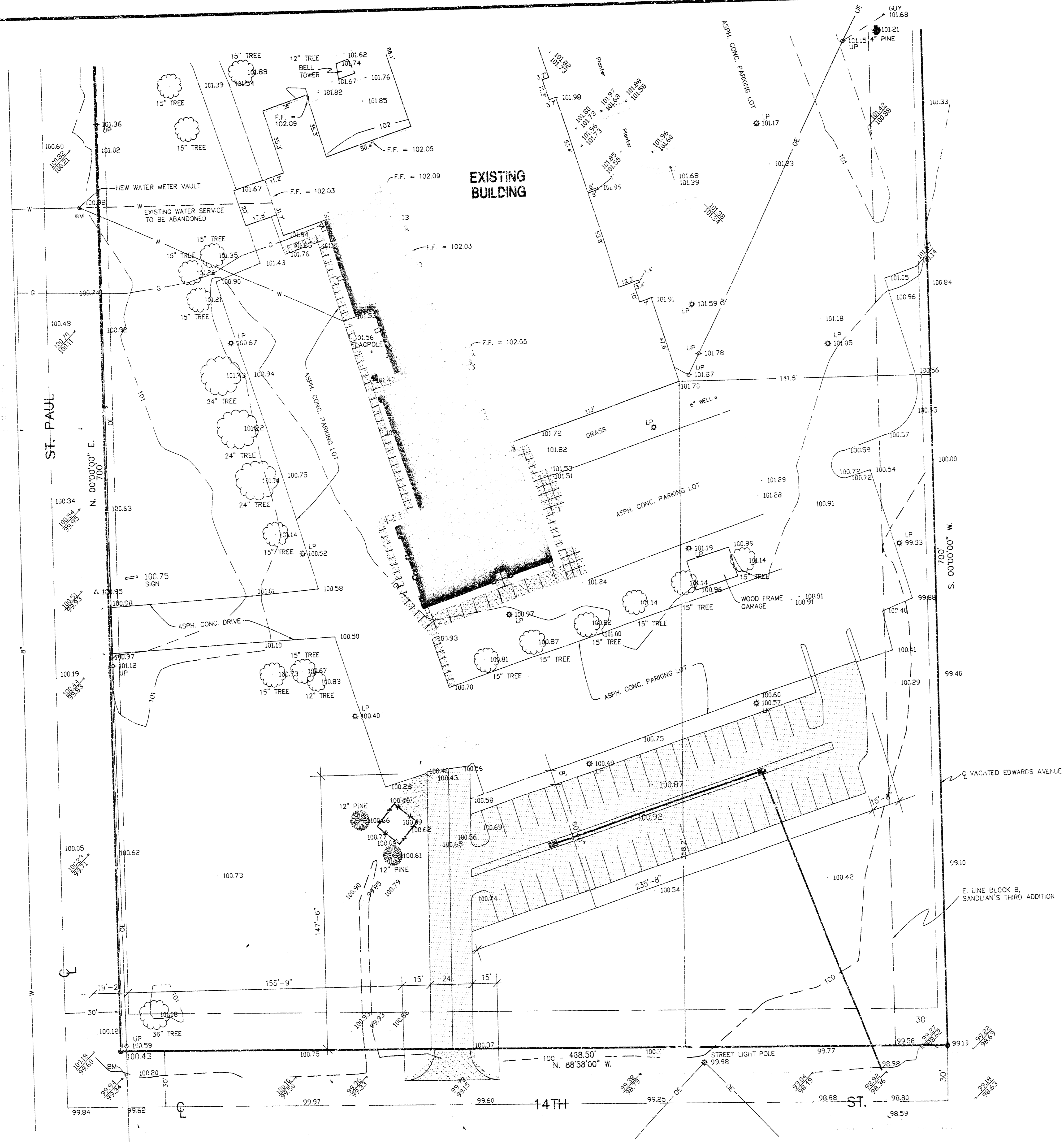
- Cover Sheet
- Key Map
- Plan & Profile
- Standard Drop Inlet Details



MOEHRING & ASSOCIATES  
CONSULTING ENGINEERS  
WICHITA

16-09-01-13

C:\S2000\WORK\ASBURY\SWSDWG.DWG



KEY MAP

STORM WATER SEWER  
ASBURY UNITED METHODIST CHURCH

NOTE:  
ADD 20.92 TO SPOT ELEVATIONS TO  
CONVERT TO CITY DATUM.

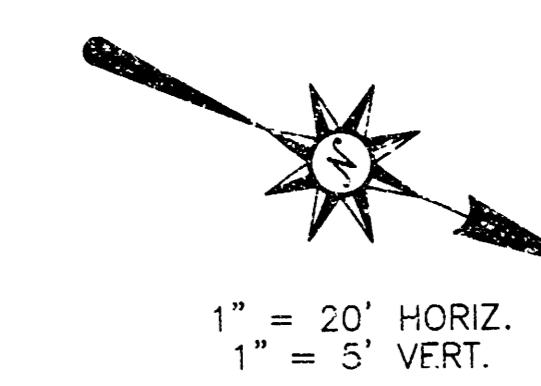
|   |              |
|---|--------------|
| <b>MOEHRING &amp; ASSOCIATES</b><br>CONSULTING ENGINEERS - SURVEYORS<br>433 S. HYDRAULIC WICHITA, KS.<br>(316) 263-8291 |              |
| PROJECT NO.   |              |
| DATE  | SHEET 2 OF 4 |

STA. 0+00 - BEGIN CONSTRUCTION  
CONNECT TO EXIST. CURB INLET  
174.38 L.F. 15" RCP (NW)  
N. -79.1939  
E. 7130.9364

N. -68.8952  
E. 7169.0691

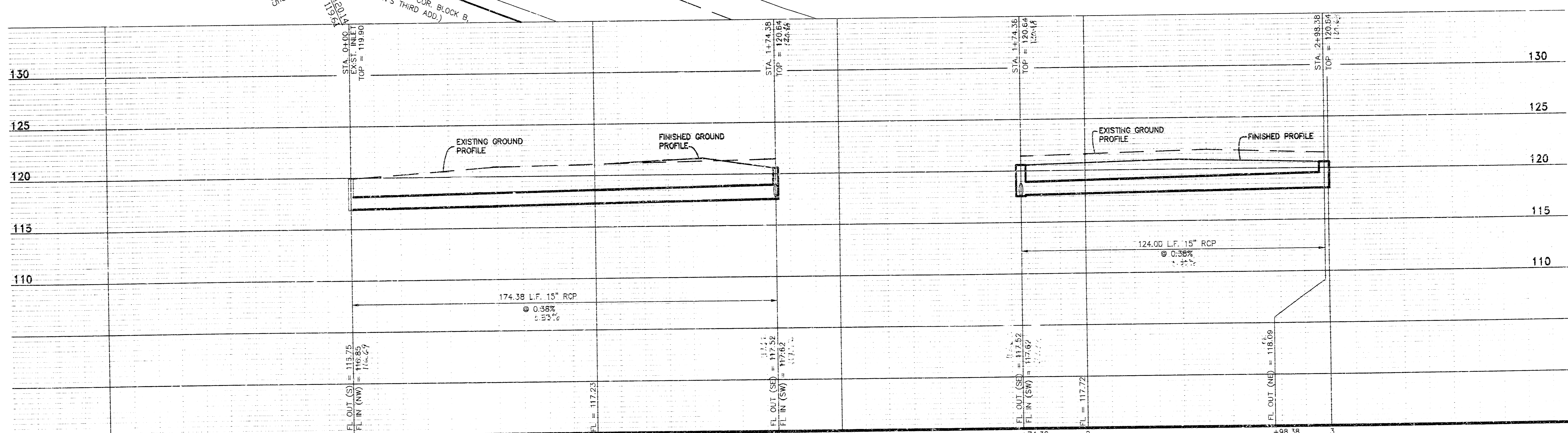
STA. 1+74.38 -  
CONSTRUCT STD. 2' x 4' DROP INLET  
124.00 L.F. 15" RCP (SW)  
TOP INLET = 120.64  
N. 83.2830  
E. 7067.6231

STA. 2+98.38 -  
CONSTRUCT STD. 2' x 4' DROP INLET  
TOP INLET = 120.64  
N. 46.8961  
E. 6949.0820



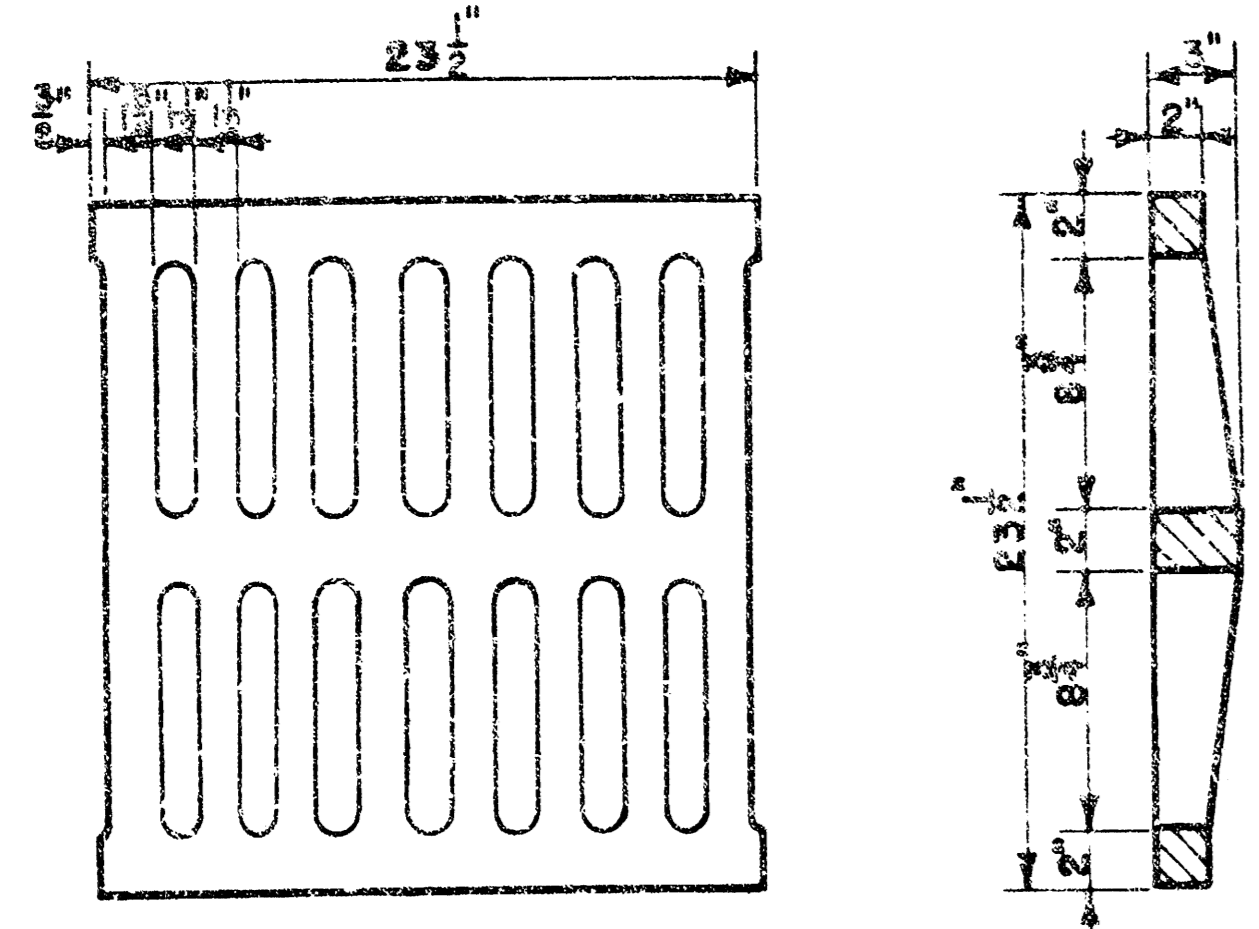
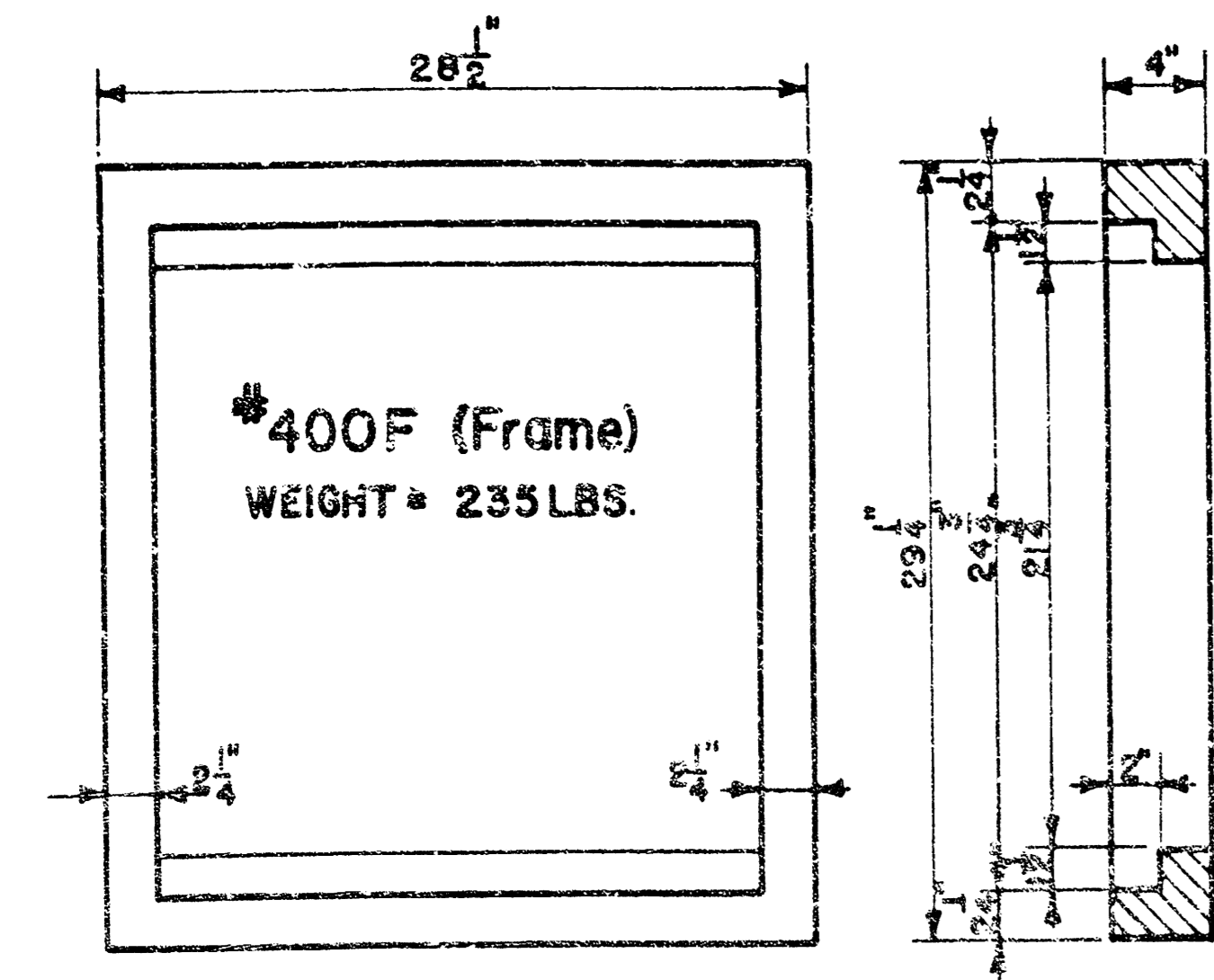
**NOTE**  
PLAN & PROFILE ELEVATIONS REFERENCED  
TO CITY DATUM. SUBTRACT 20.92'  
TO CONVERT TO ARCHITECTURAL PLAN  
ELEVATIONS.

**BENCHMARK**  
SQUARE CUT ON TOP OF CURB, 25.4' N.E. OF CURB INLET  
(STA. 0+00). ELEVATION = 120.19 CITY DATUM.



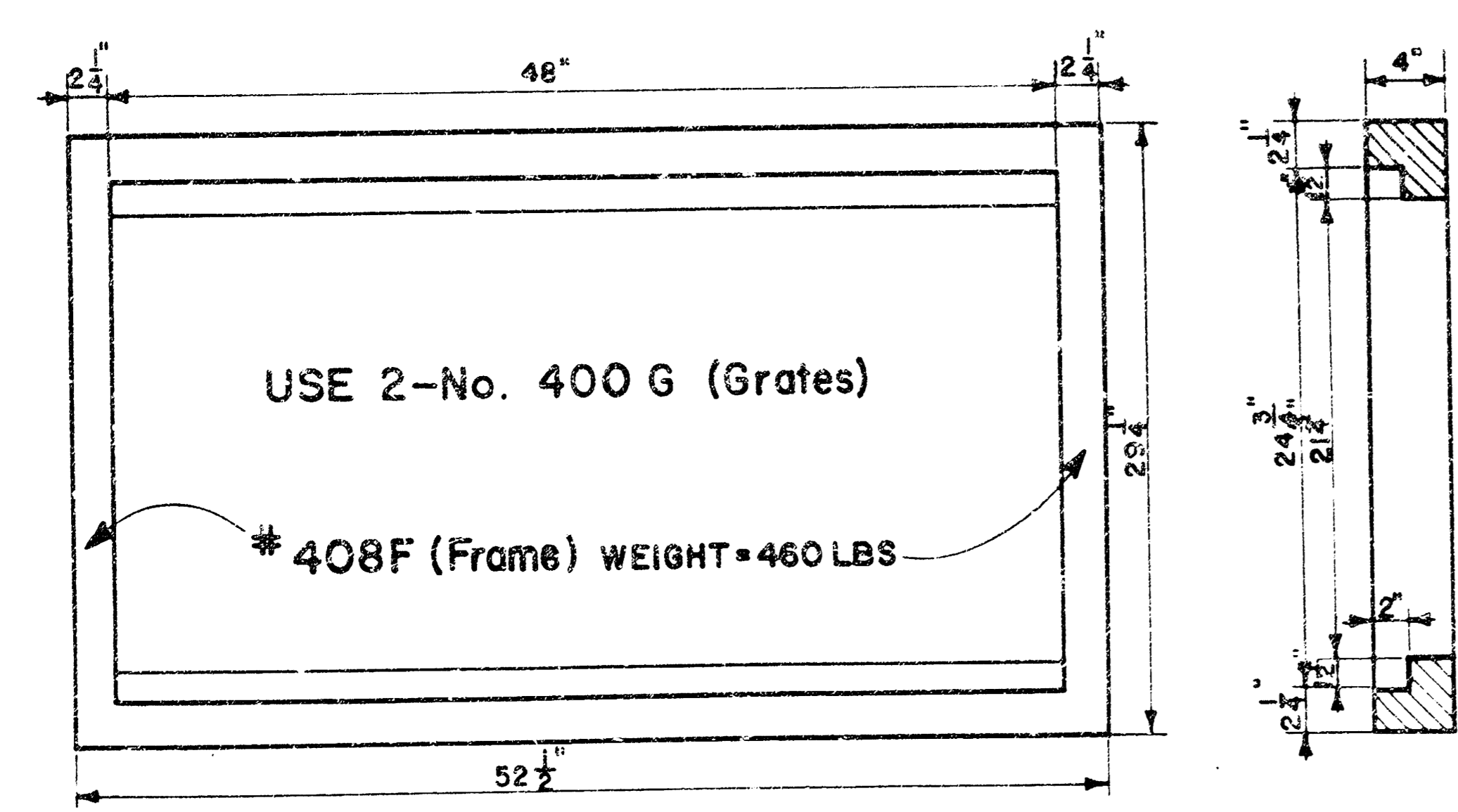
C:\S22000\WORK\ASBURYSW1.DWG

NOTE: Grates shall be imprinted on the top surface with "CITY OF WICHITA" using letters at least 1" in height. Other marking methods may be used only if approved by the engineer.

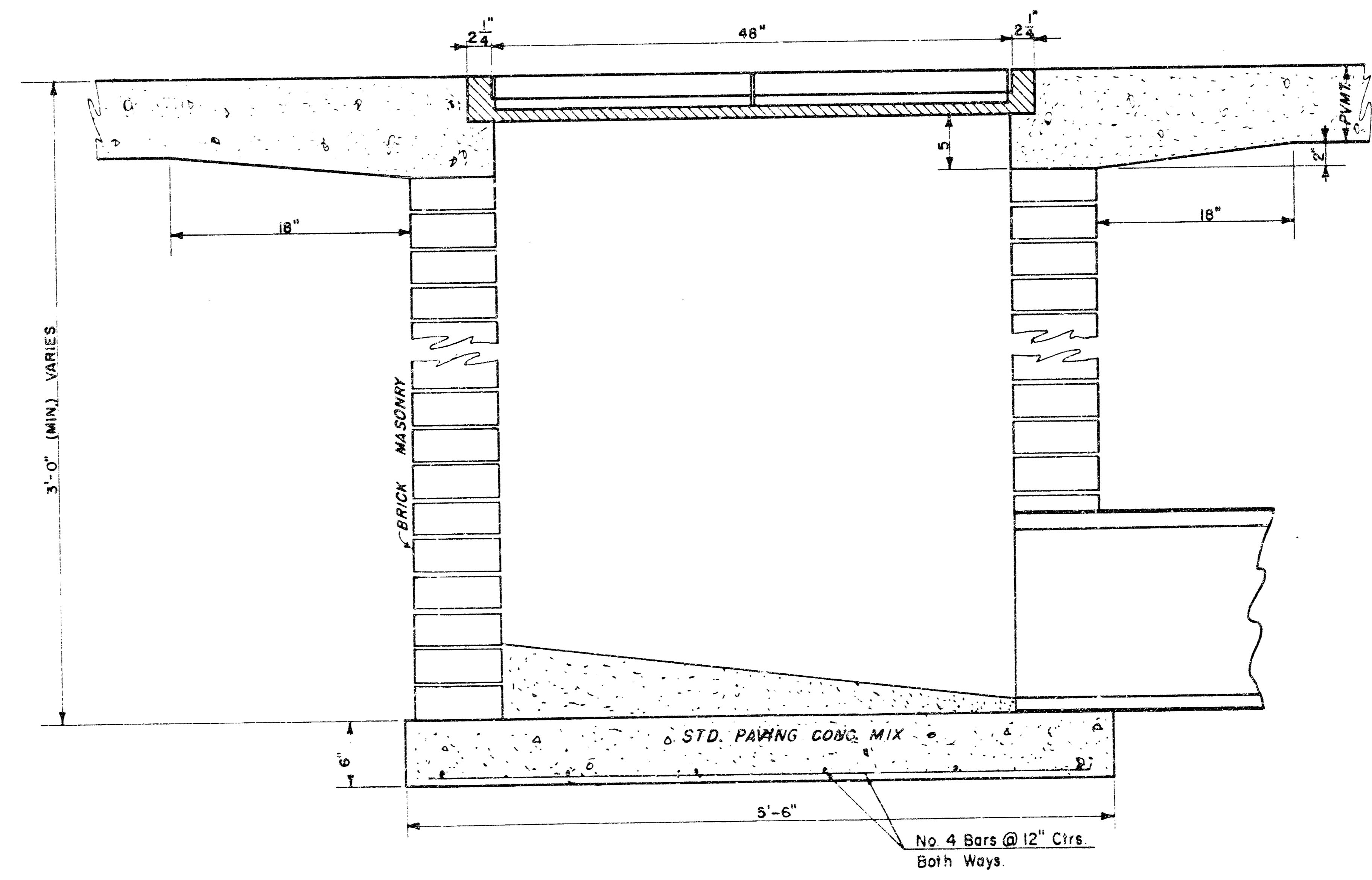
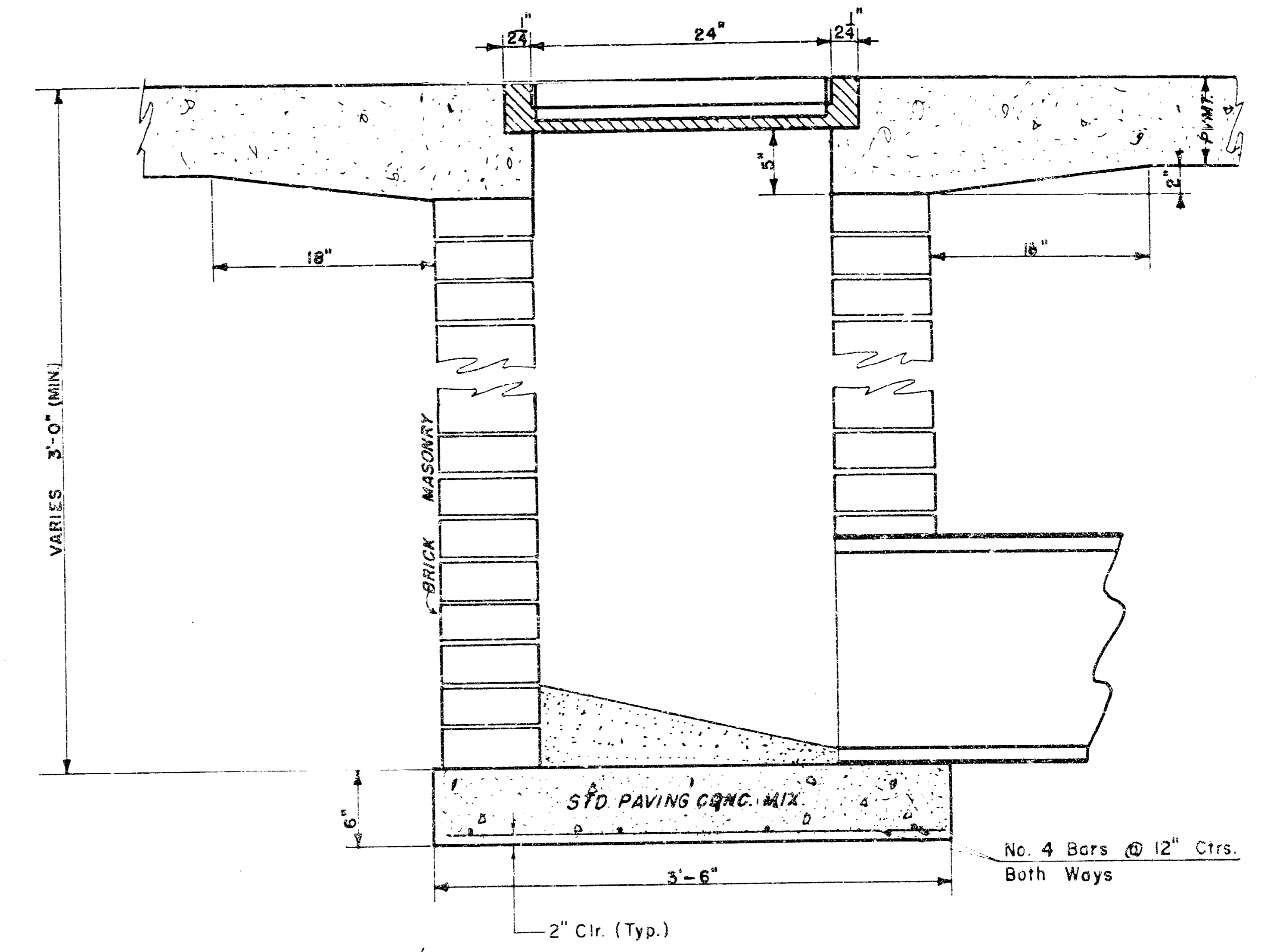
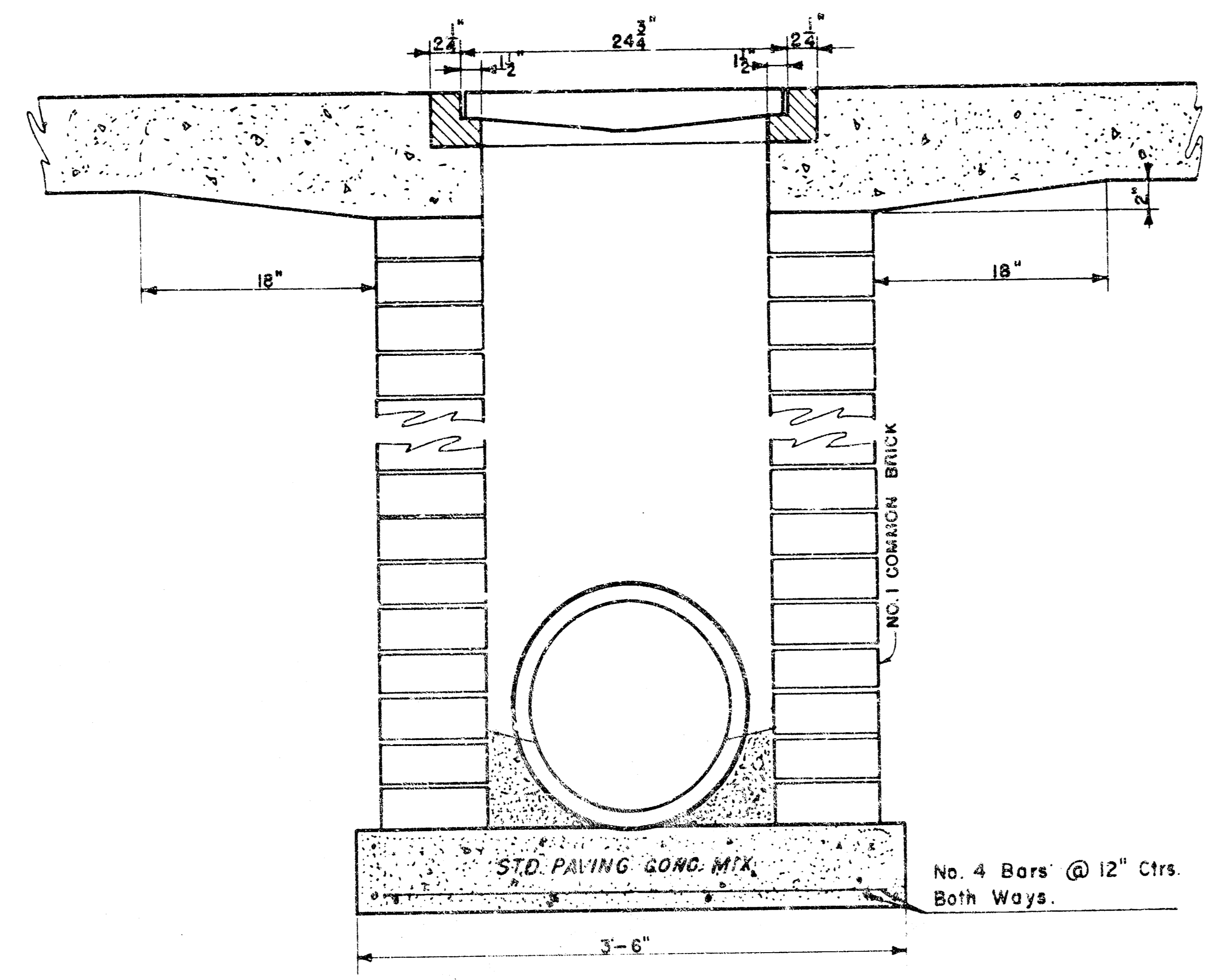


# 400G (Grate)  
WEIGHT = 235 LBS

24"x24" Frame & Grate Detail



Double 24"x24" Frame Detail



**DROP INLET DETAILS**

M.E. Lindebak, City Engineer  
City of Wichita, Kansas  
Project  
Project No.  
Date: 10 04 01 13  
Scale: 1-1/2" = 1'-0"