

**CONSTRUCTION PLANS FOR
STORM WATER SEWER**

TO SERVE A PART OF

EASTMINSTER PRESBYTERIAN CHURCH

WICHITA, SEDGWICK COUNTY, KANSAS

APPROVED AS NOTED
BY CITY ENGINEER OF WICHITA

Sanitary Sewer _____
Storm Sewers URH 12/2/00
Driveway Approaches _____
Water Mains _____
Paving _____

NOTE TO CONTRACTOR

INSPECTION AND TESTING FOR THIS PROJECT IS TO BE PROVIDED BY A LICENSED CONSULTING ENGINEERING FIRM UNDER CONTRACT WITH THE OWNER/DEVELOPER. SAID INSPECTION IS TO BE IN ACCORDANCE WITH THE CITY OF WICHITA STANDARD CONSTRUCTION ENGINEERING PRACTICES AND CERTIFIED BY A LICENSED PROFESSIONAL ENGINEER. NO WORK SHALL BE PERFORMED IN DEDICATED EASEMENTS OR THE PUBLIC RIGHT-OF-WAY BY THE CONTRACTOR WITHOUT SUCH INSPECTION NOR SHALL ANY WORK BE COMMENCED IN DEDICATED EASEMENTS OR PUBLIC RIGHT-OF-WAY WITHOUT WRITTEN AUTHORIZATION BY THE CITY ENGINEER.

CITY OF WICHITA, KANSAS
M.E. LINDEBAK **CITY ENGINEER**

PRIVATE PROJECT NO. 1044 PPS
OCA # 607861
August 2000

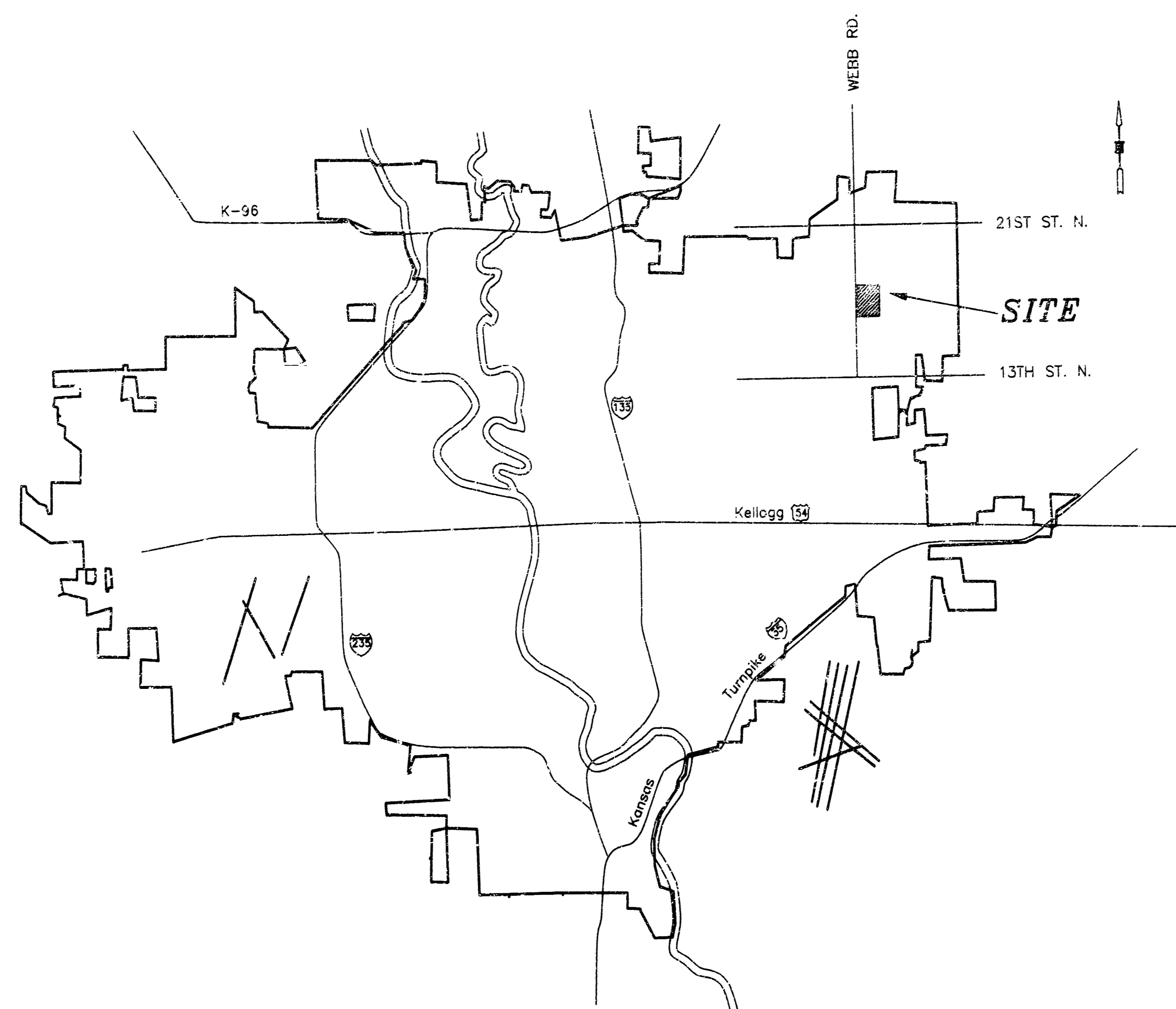
NOTES

1. THE CONTRACTOR WILL BE REQUIRED TO PROVIDE ADVANCE NOTICE OF TWENTY-FOUR (24) HOURS TO UTILITY COMPANIES PRIOR TO STARTING ANY EXCAVATION AS FOLLOWS:

KANSAS ONE-CALL	687-2470
-----------------	----------

THE CONTRACTOR MUST NOTIFY THE FOLLOWING IN CASE OF EMERGENCY:

CABLEVISION	262-4270 OR 263-2031
KANSAS GAS & ELECTRIC (GAS)	263-7511
KANSAS GAS & ELECTRIC (ELECTRIC)	264-1141
ARKLA GAS COMPANY	942-8350 OR 263-8161
SOUTHWESTERN BELL TELEPHONE	1-571-2611
CITY OF WICHITA WATER DEPT.	268-4908
CITY OF WICHITA SEWER MAINTENANCE	268-4071
2. THE CONTRACTOR SHALL BE RESPONSIBLE FOR PROPERTY IRONS. THE CONTRACTOR WILL BE REQUIRED TO REESTABLISH ANY PROPERTY IRONS WHICH ARE DAMAGED OR DESTROYED BY HIS CONSTRUCTION OPERATIONS. SUCH IRONS SHALL BE REESTABLISHED BY A LICENSED LAND SURVEYOR IN ACCORDANCE WITH STATE LAWS.
3. UNLESS OTHERWISE SPECIFIED ON THE PLANS, MANHOLES MAY BE TYPE "B", "C" OR "D" MANHOLES. MANHOLES SHALL BE CONSTRUCTED IN ACCORDANCE WITH THE STANDARD SPECIFICATIONS AND THE STANDARD DETAIL DRAWINGS.
4. TRAFFIC WILL NOT BE AFFECTED IN THIS AREA OF CONSTRUCTION.
5. CONTRACTOR SHALL PROVIDE POSITIVE DRAINAGE AWAY FROM ALL MANHOLE COVERS.



INDEX

1. Cover Sheet
2. Plan & Profile
- 3-4. Standard Manhole Details
5. Final Plat of Eastminster Addition

Booked
E-8
12/29/03
RDL
Per Plan



MOEHRING & ASSOCIATES
CONSULTING ENGINEERS
WICHITA

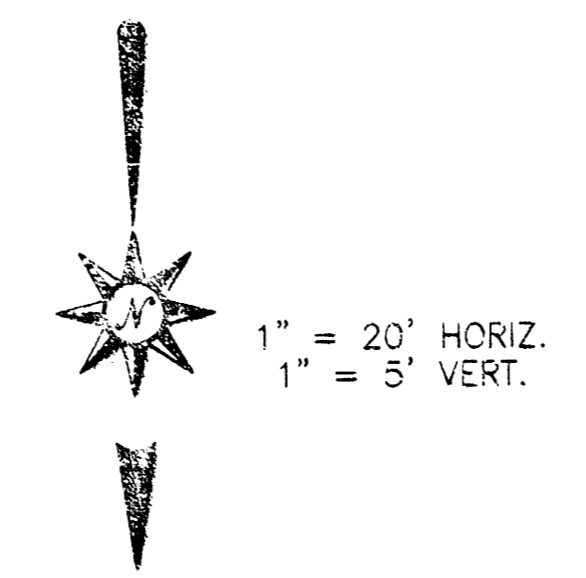
STA. 1+88.03 - END CONSTRUCTION
 CONNECT TO EXIST. 2' x 4' DROP INLET
 OUT & PLUG 2 EXIST. 15" PIPES (W)
 N. -63.7980
 E. 2051.8433

STA. 1+55.83
 CONSTRUCT STD. SPECIAL SHALLOW MANHOLE
 TOP = 194.70
 34.18 L.F. 12" PVC (E)
 N. -63.7980
 E. 2017.8366

STA. 0+00 - BEGIN CONSTRUCTION
 CONSTRUCT 2' x 4' DROP INLET
 OVER EXISTING DBL. 15" PVC.
 SEWER PIPES.
 TOP = 194.40
 51.18 L.F. 12" PVC (W)
 N. 33.9080
 E. 2080.7028

STA. 0+82.14
 CONSTRUCT STD. SPECIAL SHALLOW MANHOLE
 TOP = 194.50
 85.71 L.F. 12" PVC (S)
 N. 21.9143
 E. 2017.6366

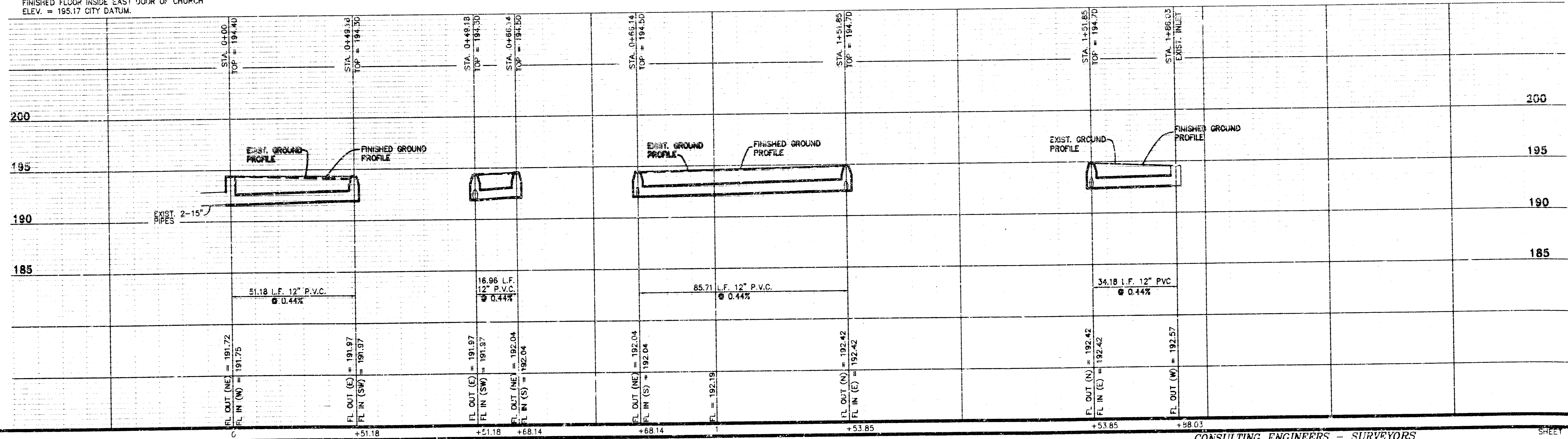
STA. 0+31.18
 CONSTRUCT STD. SPECIAL SHALLOW MANHOLE
 TOP = 194.50
 16.96 L.F. 12" PVC (SW)
 N. 33.9049
 E. 2029.6272



POINT #	N. COORD.	E. COORD.	POINT DESCRIPTION
CP "A"	-56.0041	1949.6724	60D NAIL, BK. OF CURB AT BEND IN CURB
CP "B"	-12.6049	1992.9047	60D NAIL, BK. OF CURB
CP "C"	514.2549	1733.0533	IRON - N.W. COR., EASTMINSTER ADDITION
CP "D"	294.2128	1783.3128	IRON, 50' E. OF N.W. COR., LOT 1, BLK. 2
CP "E"	294.2550	1733.3128	IRON - N.W. COR., LOT 1, BLK. 2
CP "F"	-828.6942	1734.6376	IRON - S.W. COR., LOT 1, BLK. 2
1	33.9080	2080.8028	CTR. NEW 2' x 4' DROP INLET (STA. 0+00)
2	33.9049	2029.6272	CTR. MANHOLE (STA. 0+49.18)
3	21.9143	2017.6366	CTR. MANHOLE (STA. 0+86.14)
4	-63.7980	2017.6366	CTR. MANHOLE (STA. 1+51.85)
5	-63.7980	2051.8433	CTR. EXIST. 2' x 4' DROP INLET (STA. 1+86.03)

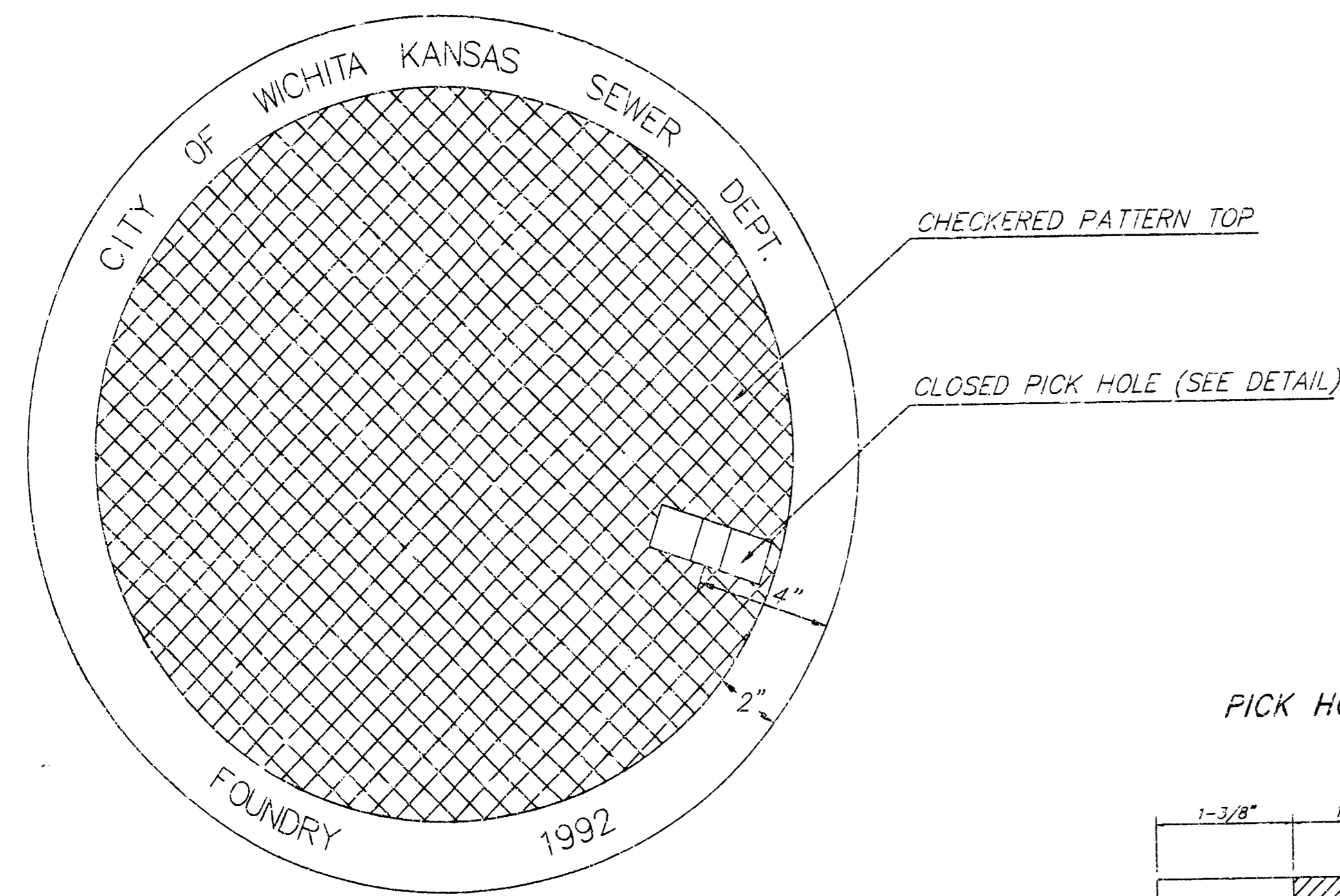
BENCHMARK

FINISHED FLOOR INSIDE EAST DOOR OF CHURCH
 ELEV. = 195.17 CITY DATUM.

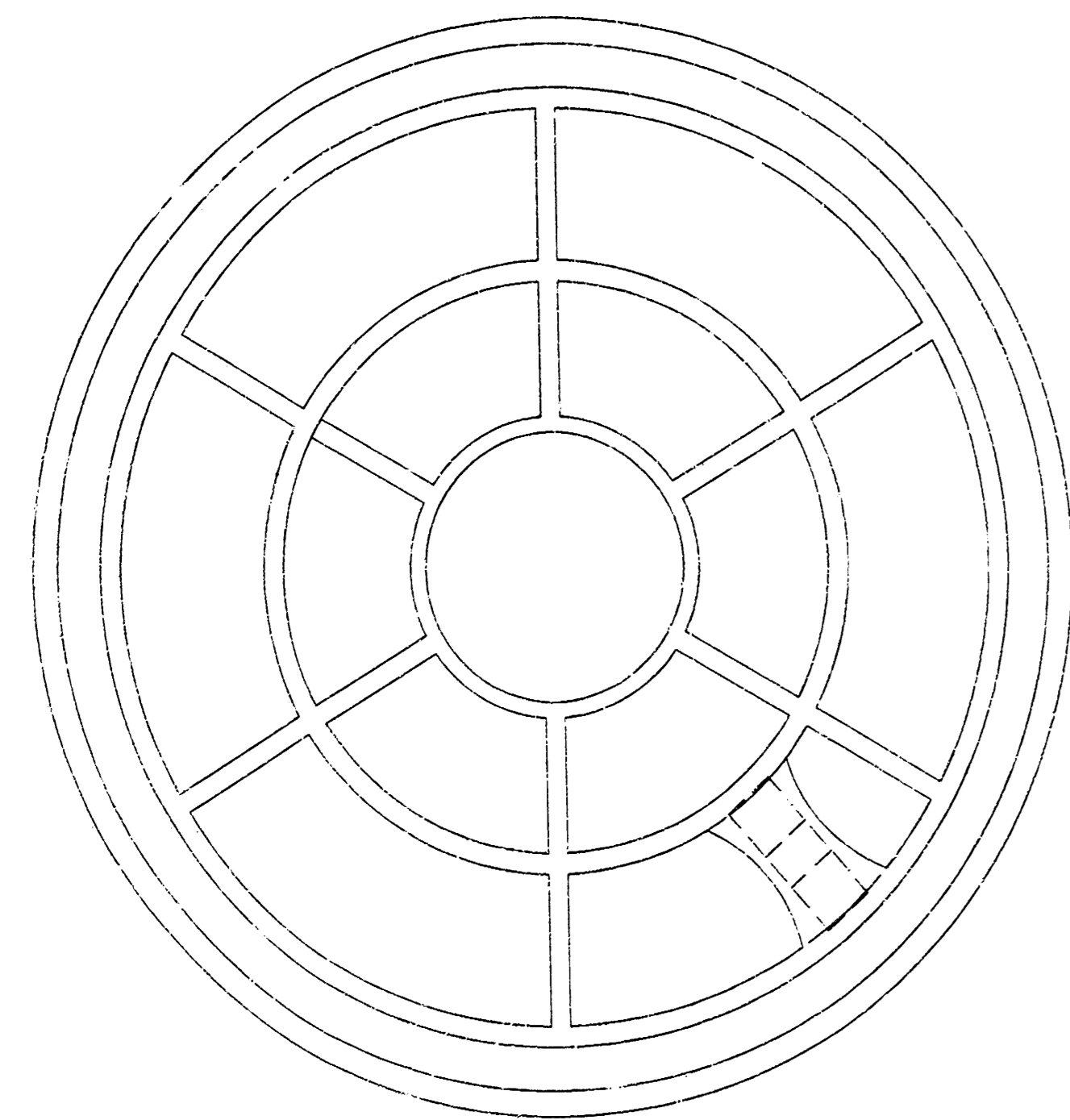


C:\SC2000\WORK\CHAPELSW1.DWG

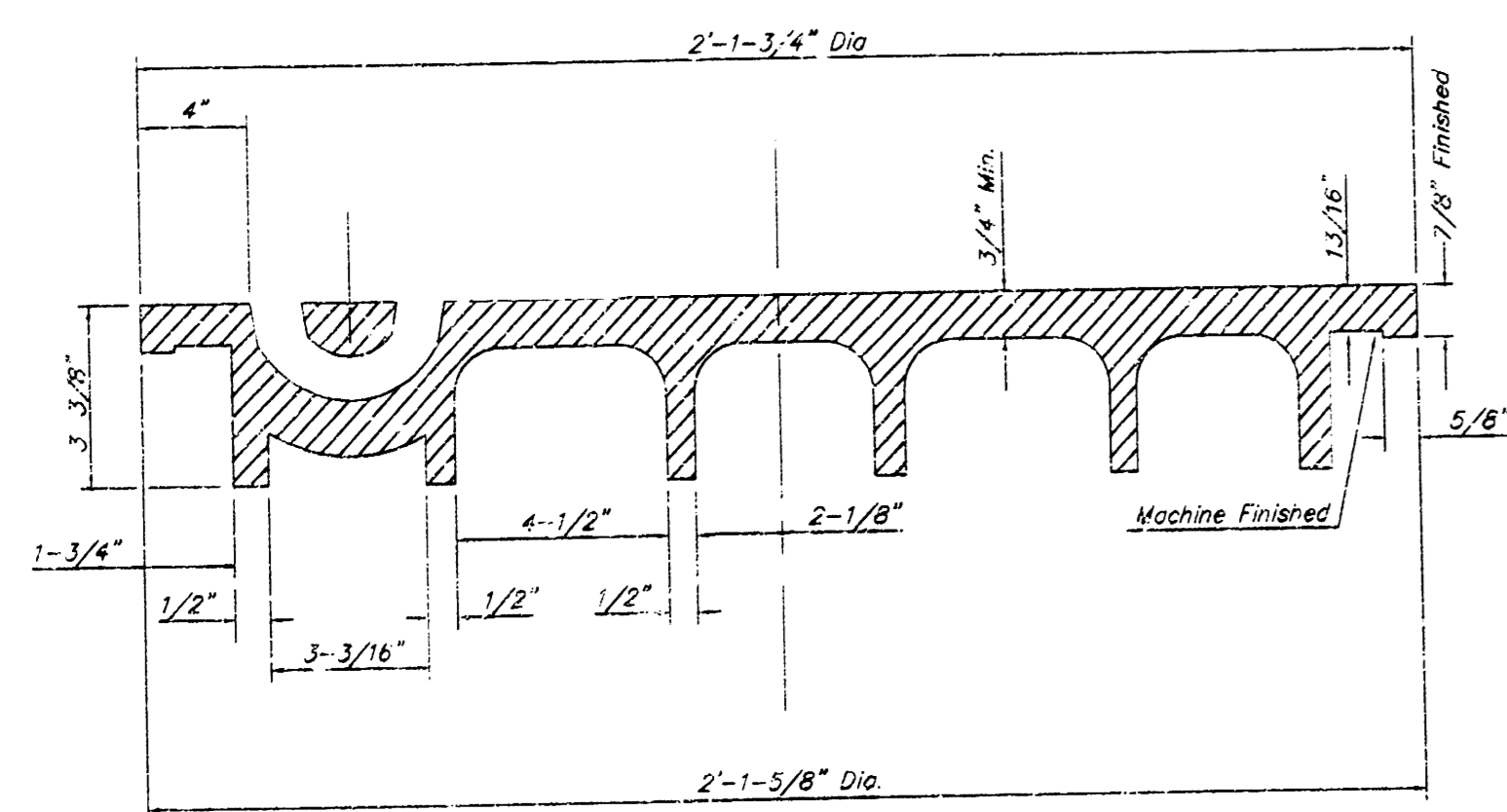
MANHOLE COVER
Weight = 130 Lbs.



TOP VIEW



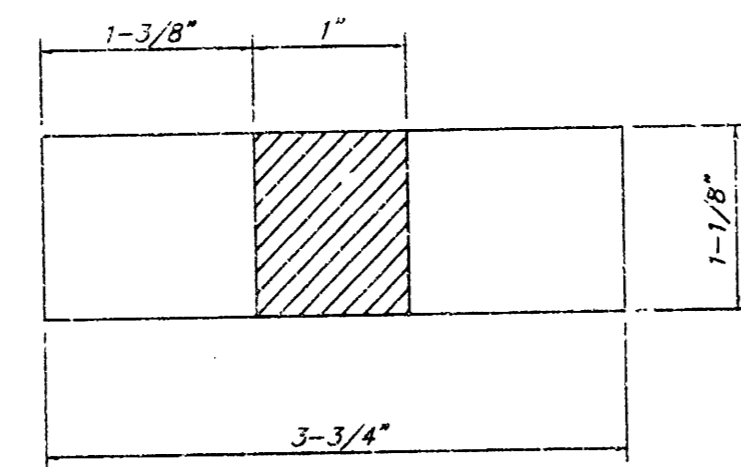
BOTTOM VIEW



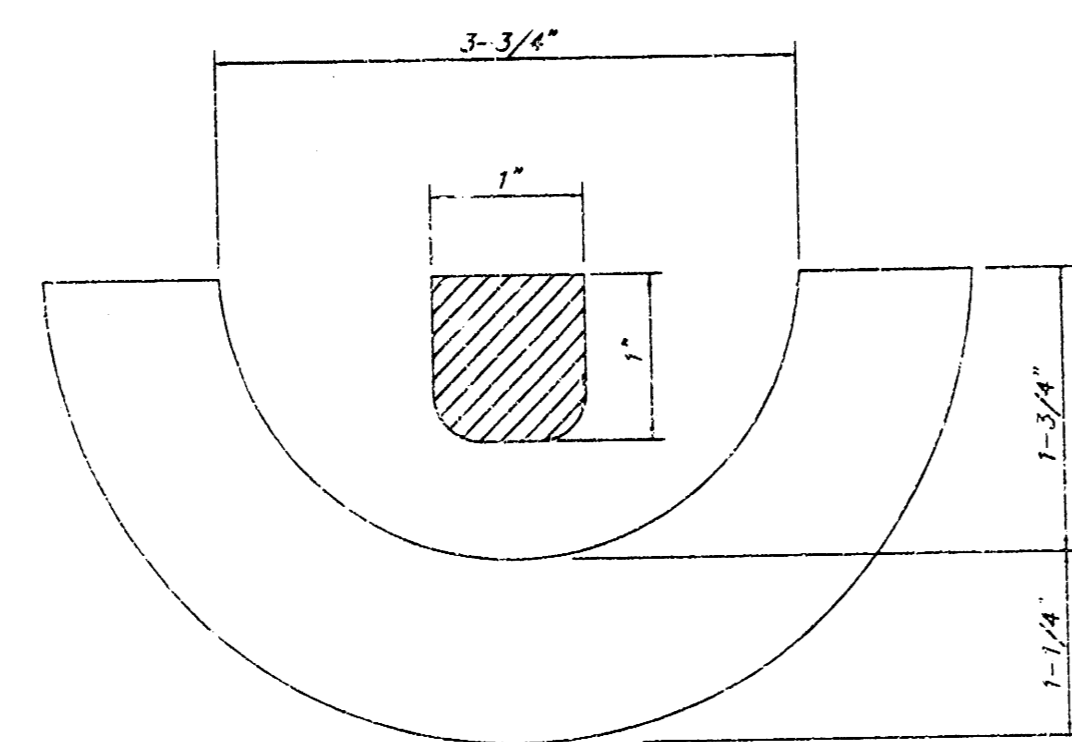
SECTION VIEW

CHECKERED PATTERN TOP
CLOSED PICK HOLE (SEE DETAIL)

PICK HOLE DETAIL



TOP VIEW

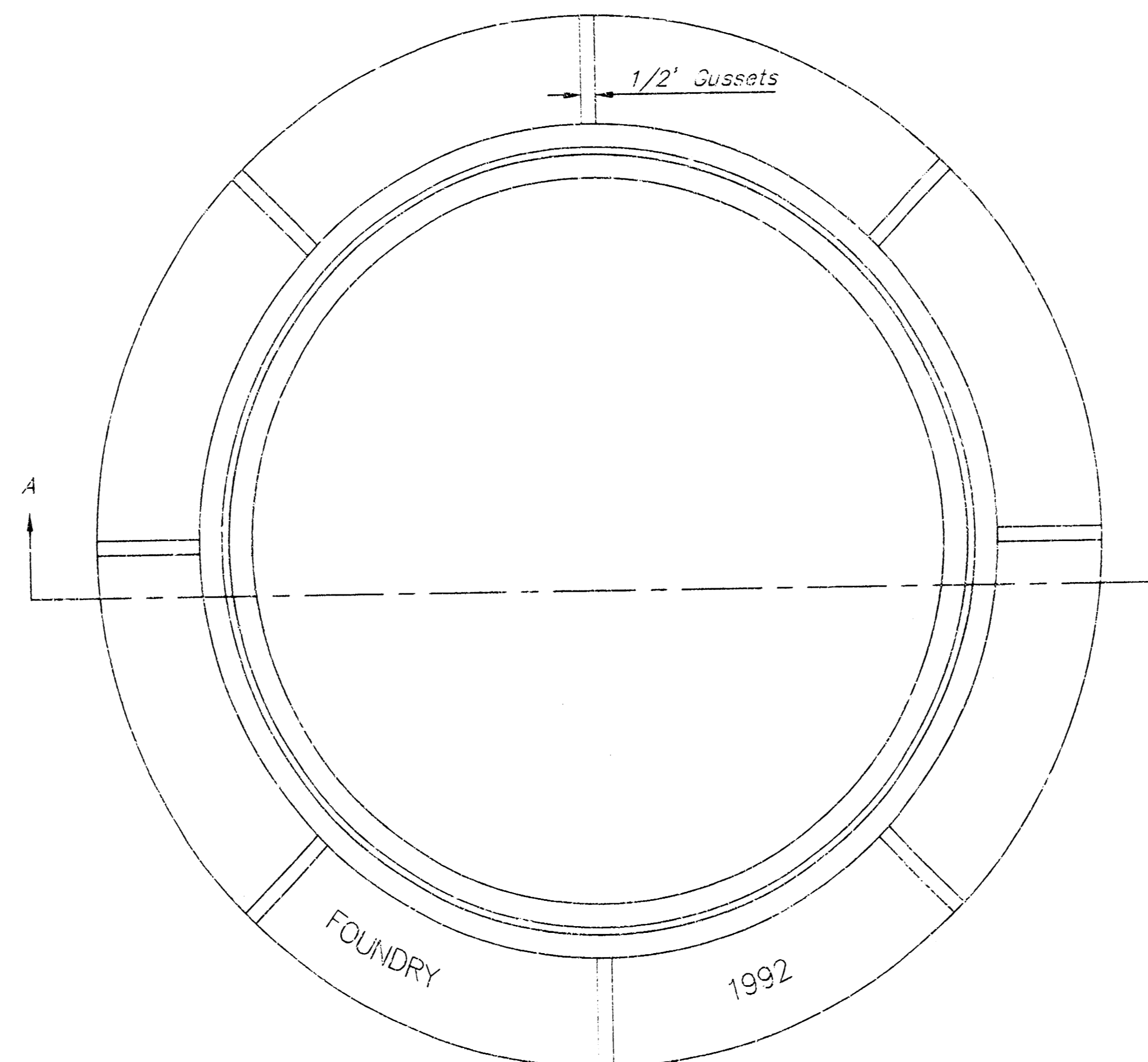


SECTION VIEW

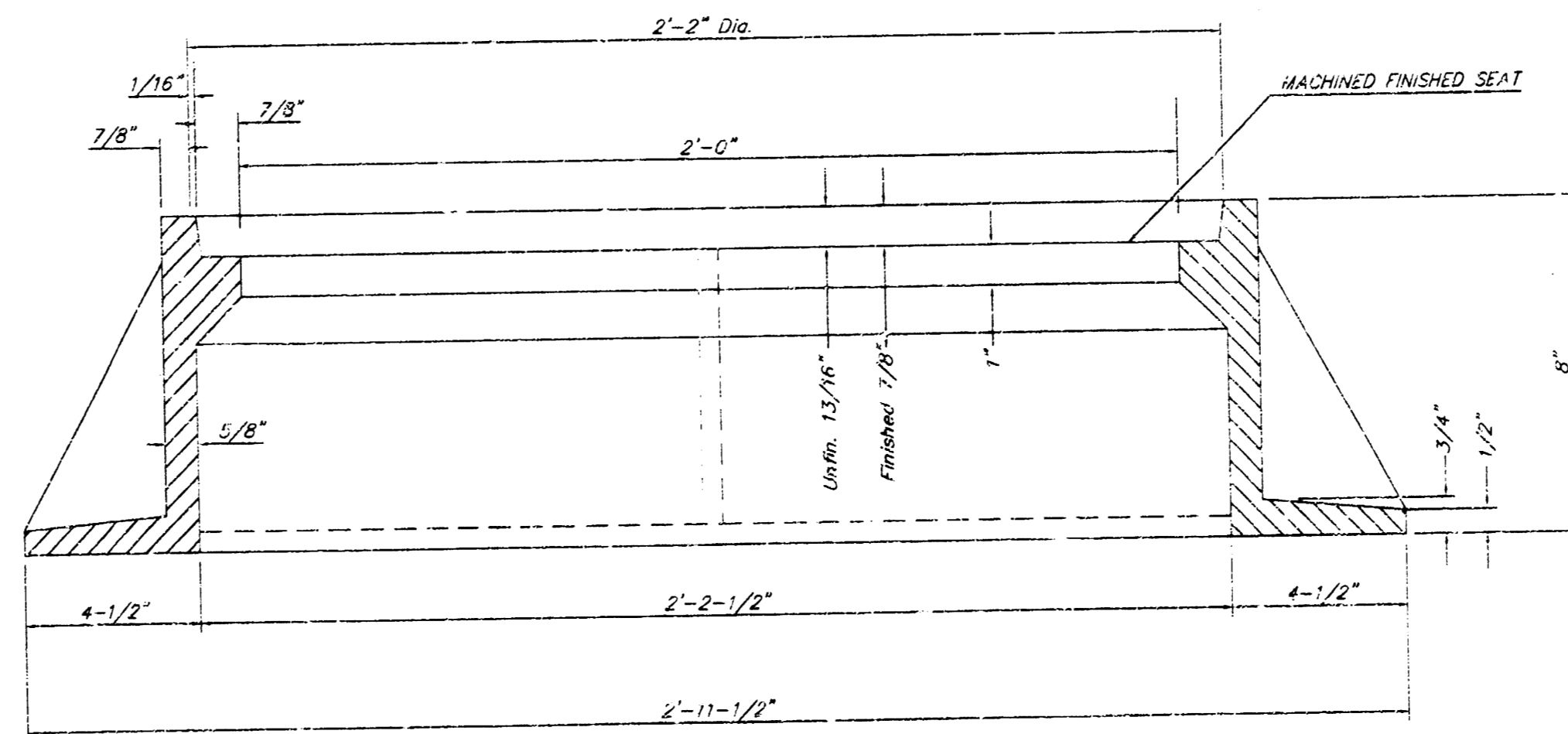
MANHOLE FRAME AND COVER DETAIL

ADOPTED AS STANDARD DESIGN BY
CITY OF WICHITA, KANSAS

MANHOLE FRAME
Weight = 240 Lbs.



TOP VIEW



SECTION A-A

GENERAL NOTES

MANHOLE CASTINGS SHALL BE MANUFACTURED USING GOOD QUALITY GRAY IRON CONFORMING TO CLASS 30 OF A.S.T.M. DESIGNATION A-48. DIMENSIONS AND WEIGHTS SHOWN ON THE DETAILED DRAWINGS SHALL BE CONSIDERED AS MINIMUM REQUIREMENTS AND ANY DEVIATIONS FROM THE DIMENSIONS SHOWN MUST BE SPECIFICALLY APPROVED. THE FINISHED CASTINGS SHALL BE OF UNIFORM QUALITY, FREE FROM BLOWHOLES, POROSITY, HARD SPOTS, SHRINKAGE DISTORTIONS OR OTHER DEFECTS.

MANHOLE CASTINGS SHALL BE COATED WITH AN ASPHALT PAINT RESULTING IN A SMOOTH, TOUGH AND TENACIOUS COATING WHICH IS NOT BRITTLE OR TACKY.

MANHOLE CASTINGS SHALL BE MANUFACTURED SUCH THAT A COVER MANUFACTURED BY ANY ONE FOUNDRY WILL FIT INTERCHANGEABLY INTO A FRAME MANUFACTURED BY ANOTHER FOUNDRY AND STILL MEET ALLOWABLE CLEARANCES AND NON-ROCKING REQUIREMENTS. THIS WILL REQUIRE MANUFACTURING OF THE MATCHING FACES ON THE COVER AND THE FRAME TO CLOSE TOLERANCES.

THE OUTSIDE CIRCUMFERENCE OF THE VERTICAL FACE OF THE COVER AND THE INSIDE CIRCUMFERENCE OF THE VERTICAL FACE IN THE FRAME RECESS SHALL BE MANUFACTURED TO TOLERANCES SUCH THAT THE CLEARANCE BETWEEN THE COVER AND FRAME WILL NOT EXCEED 1/8" AT ANY POINT AROUND THE CIRCUMFERENCE OF THE COVER. THE SEATING SURFACES BETWEEN THE COVER AND FRAME SHALL BE MACHINED SUCH AS THESE SURFACES SHALL MAKE FULL CONTACT FOR THEIR FULL CIRCUMFERENCE TO PRECLUDE THE COVER FROM ROCKING IN THE FRAME.

THE MANHOLE FRAME AND COVER SHALL BE MARKED WITH LETTERING INDICATING THE NAME OF THE MANUFACTURER AND THE YEAR WHEN THE COVER OR FRAME WAS CAST. THE COVER SHALL BE FURTHER IDENTIFIED WITH RECORDS TO OWNERSHIP USING LETTERS AT LEAST 1 INCH IN HEIGHT. THIS IDENTIFICATION SHALL BE "CITY OF WICHITA SEWER DEPARTMENT". THE WORD DEPARTMENT MAY BE ABBREVIATED. THE TEXTURE OF THE TOP SURFACE OF THE COVER SHALL BE MANUFACTURED IN A CHECKERED PATTERN DESIGN AS INDICATED ON THE DRAWINGS. SMOOTH BLOCKOUTS SHALL BE UTILIZED TO HIGHLIGHT THE LETTERING ON THE COVER SURFACE. THE TOTAL AREA OF SMOOTH SURFACE BLOCKOUT SHALL NOT EXCEED THE AREA AS INDICATED ON THE DRAWING. POSITIONING OF SMOOTH BLOCKOUTS AND LETTERING MAY VARY FROM THAT SHOWN ON THE DETAILED DRAWING.

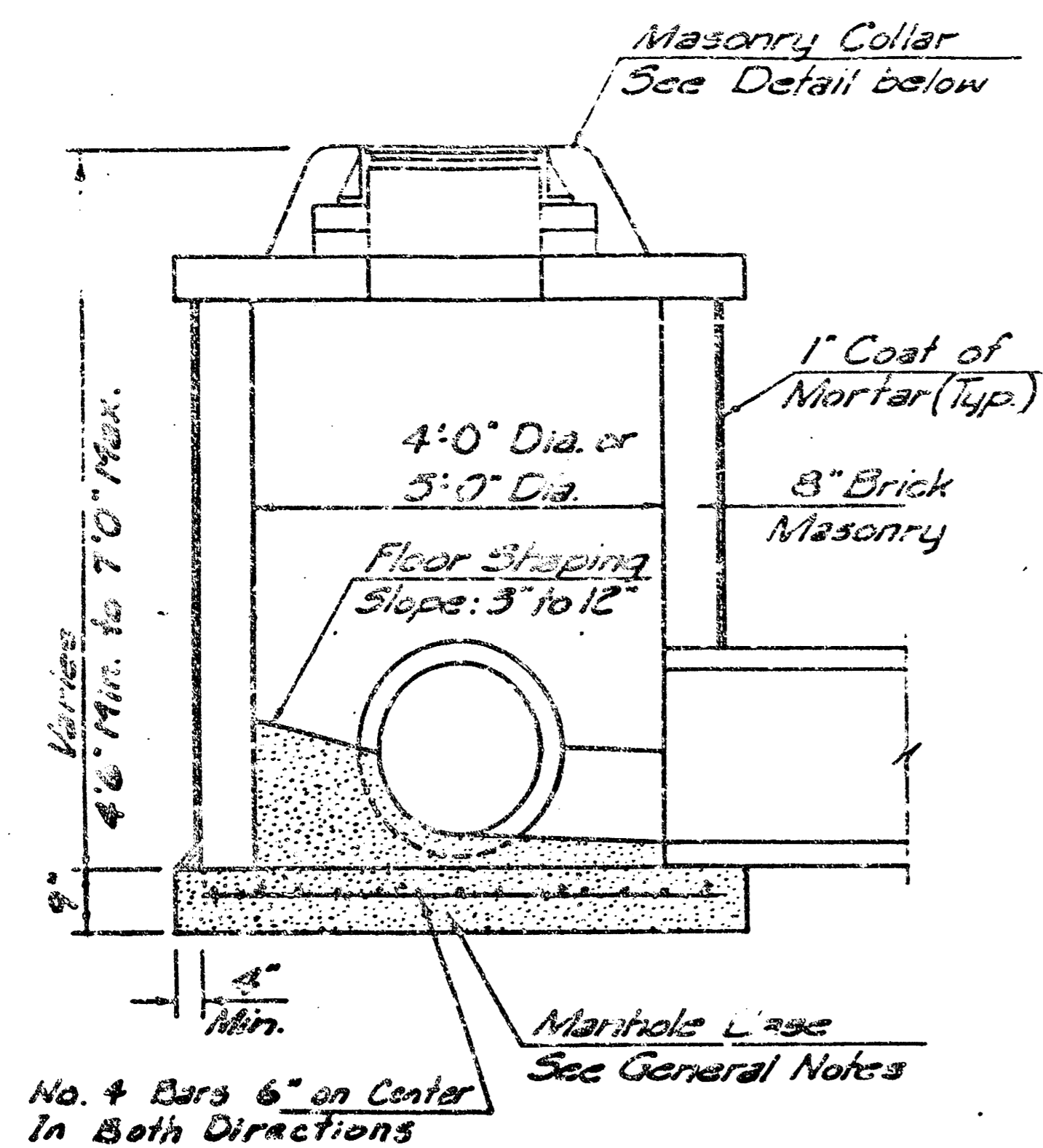
THE CITY OF WICHITA
W
CITY ENGINEER'S OFFICE
CITY HALL - SEVENTH FLOOR
455 NORTH MAIN STREET
WICHITA, KANSAS 67202
(316) 266-4801
(316) 266-4114 FAX

MANHOLE FRAME AND COVER

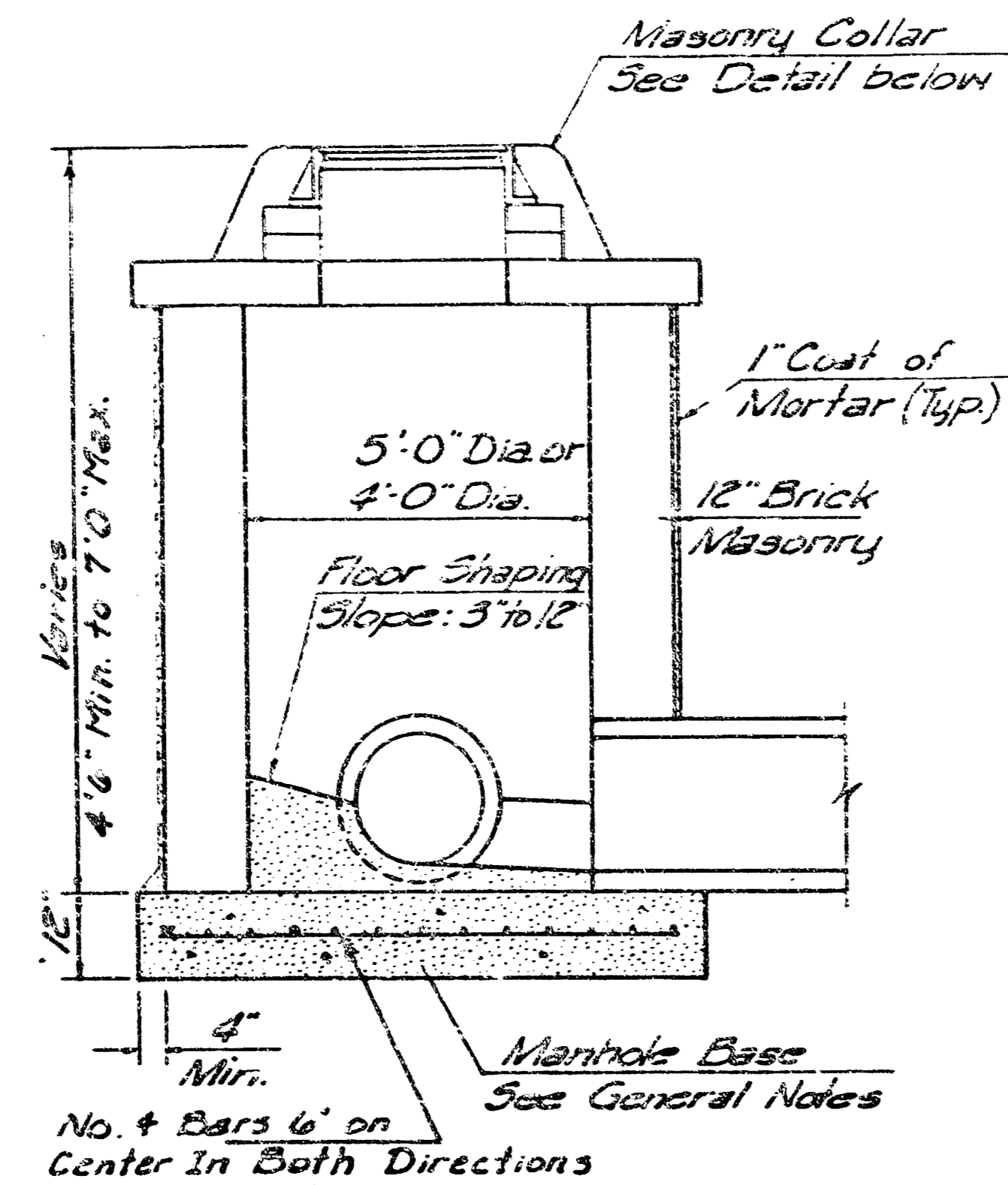
M. E. LINDEGAK P.E. - CITY ENGINEER

PROJECT NUMBER INDEX CODES
607861

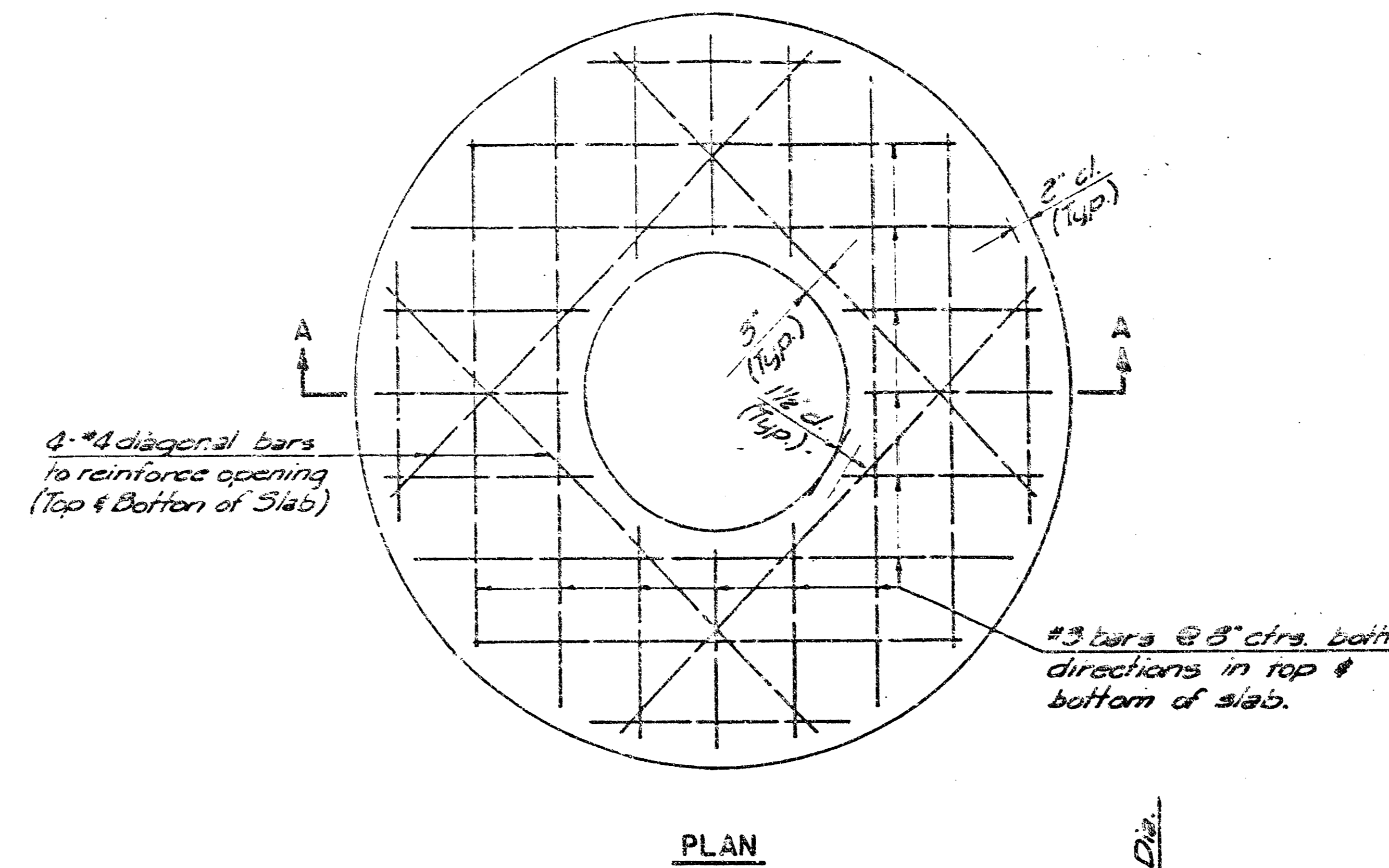
DATE SHEET 3 OF 5
MAR 96



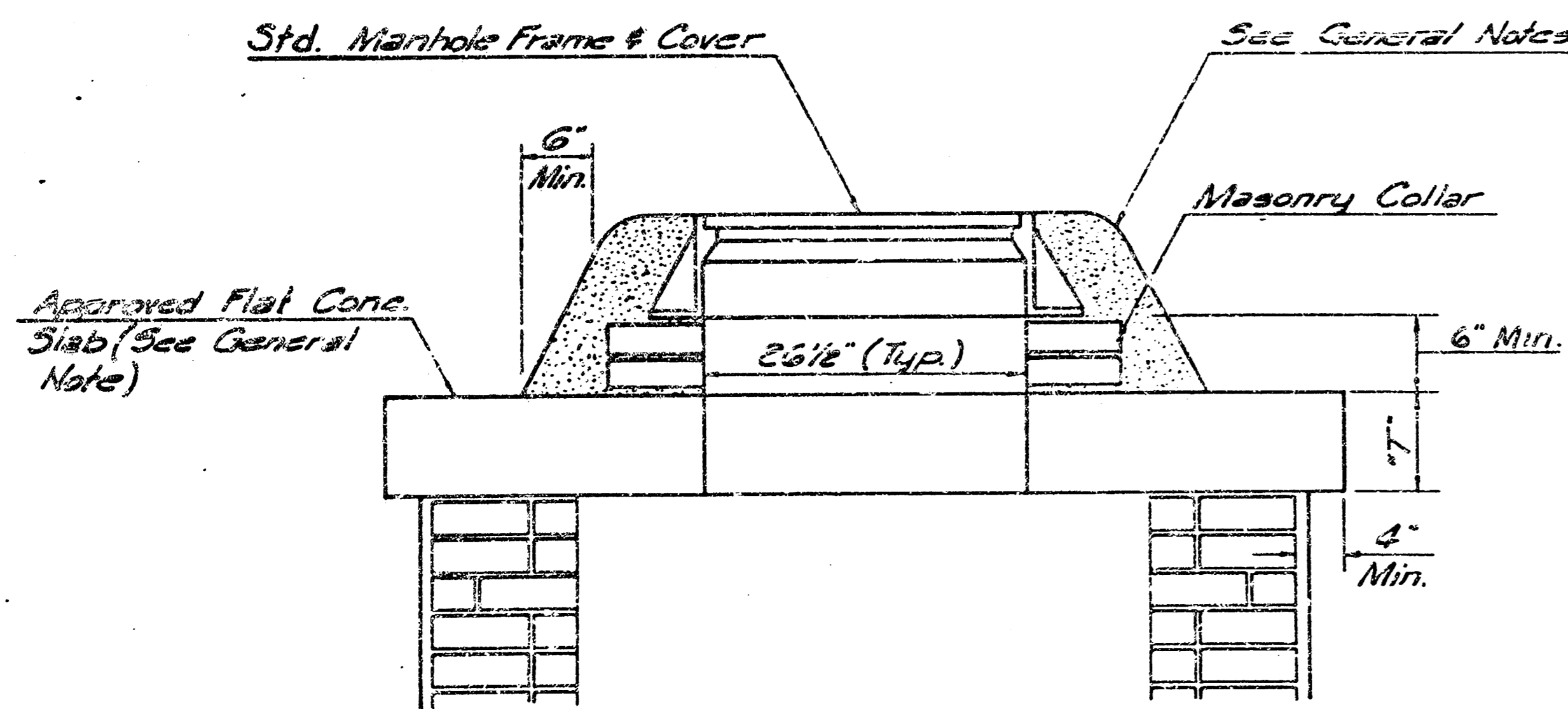
SHALLOW TYPE "A" MANHOLE



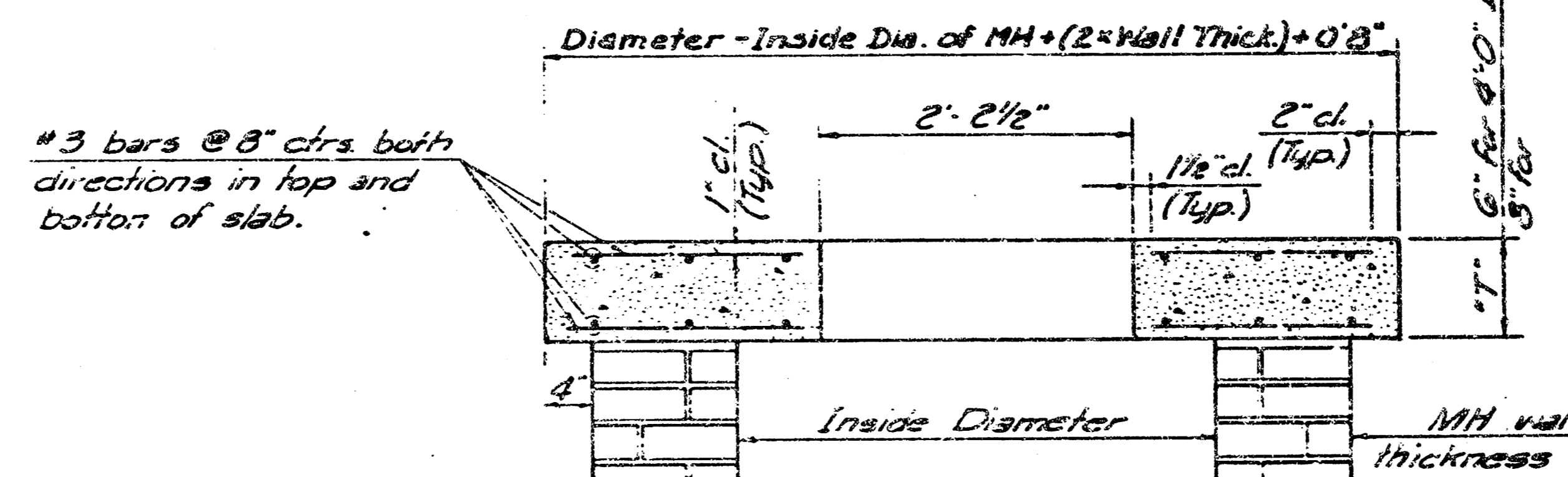
SHALLOW TYPE "B" MANHOLE



PLAN

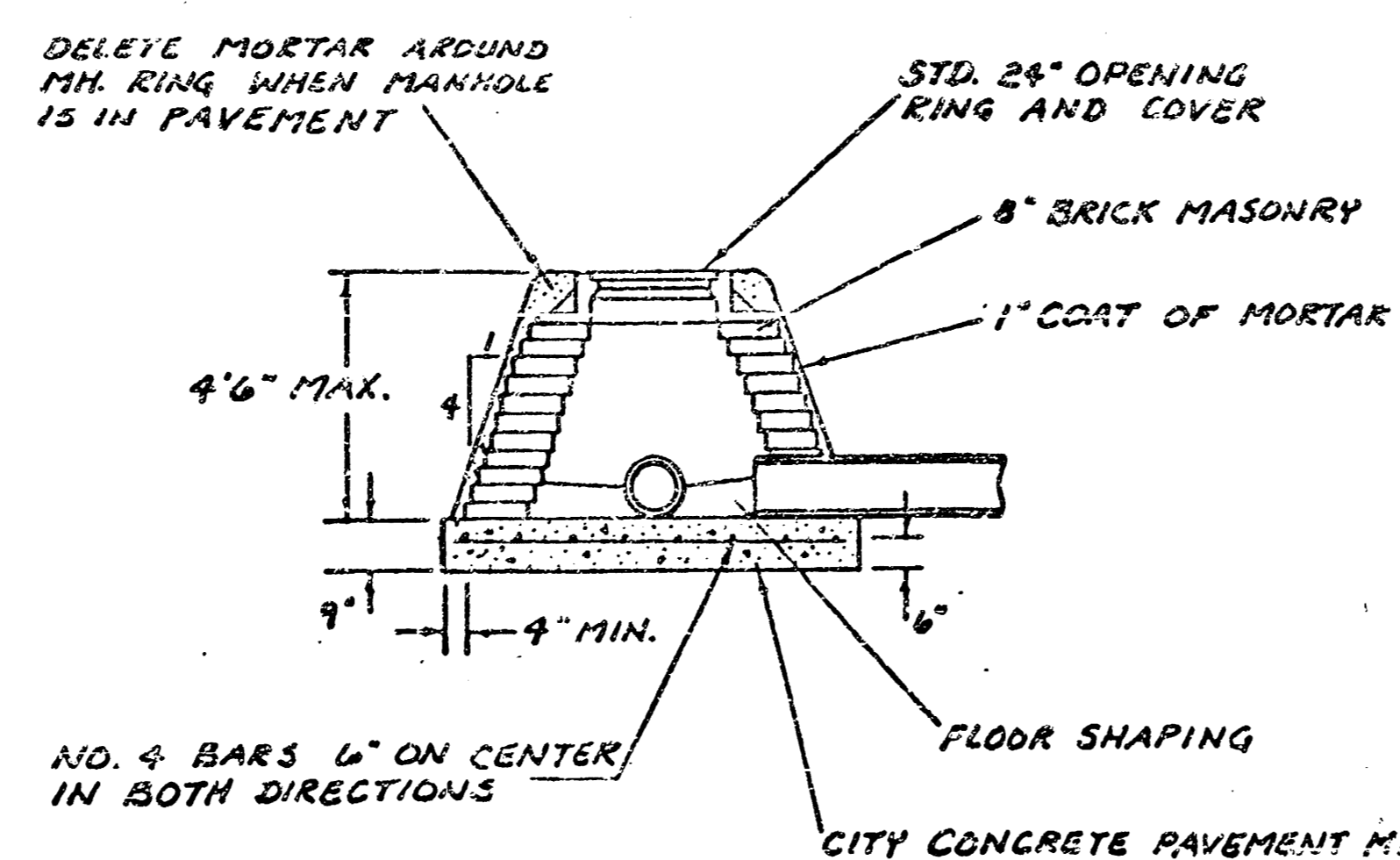


MASONRY COLLAR DETAIL

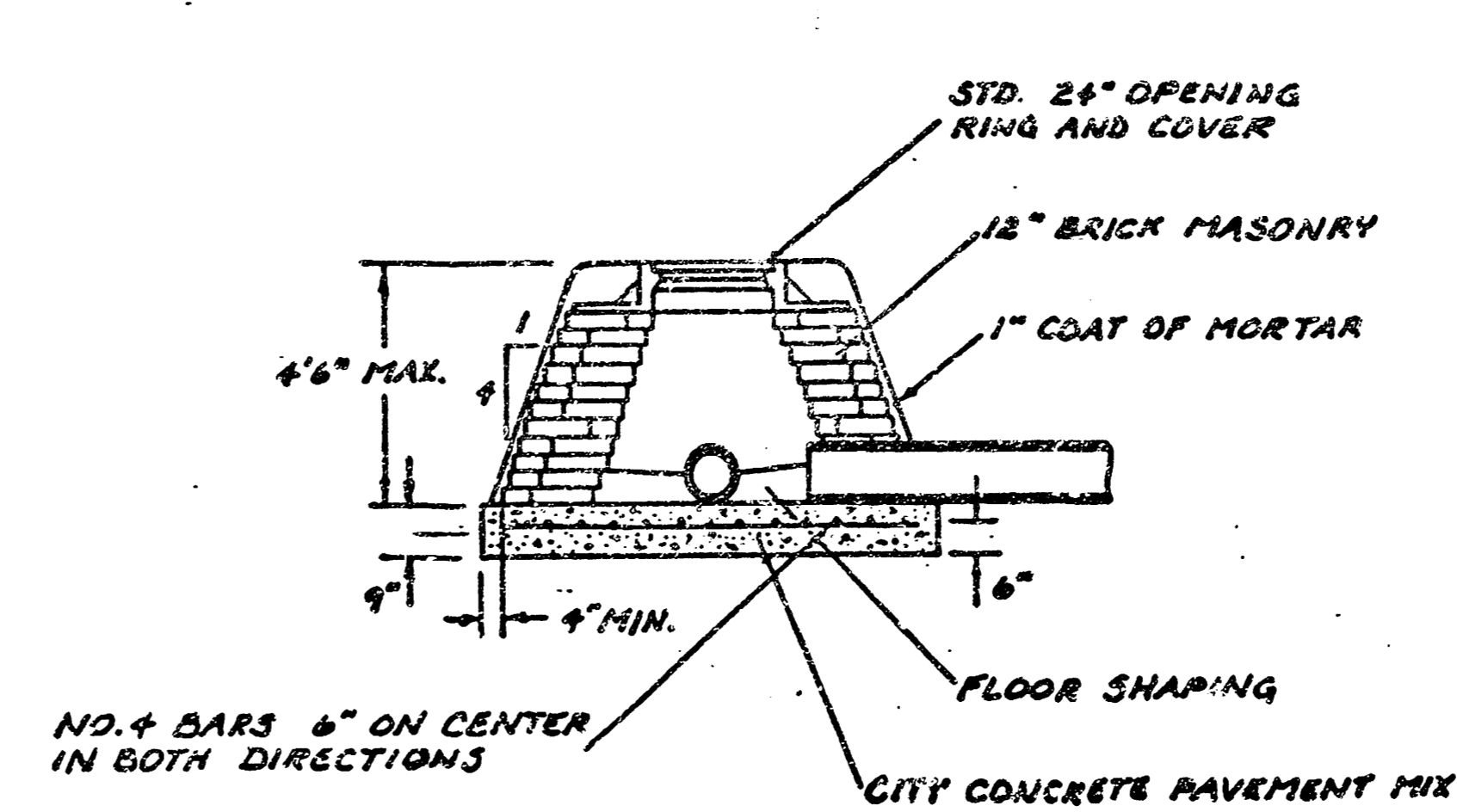


SECTION A-A

FLAT CONCRETE SLAB DETAILS



SPECIAL SHALLOW TYPE 'A' MANHOLE



SPECIAL SHALLOW TYPE 'B' MANHOLE

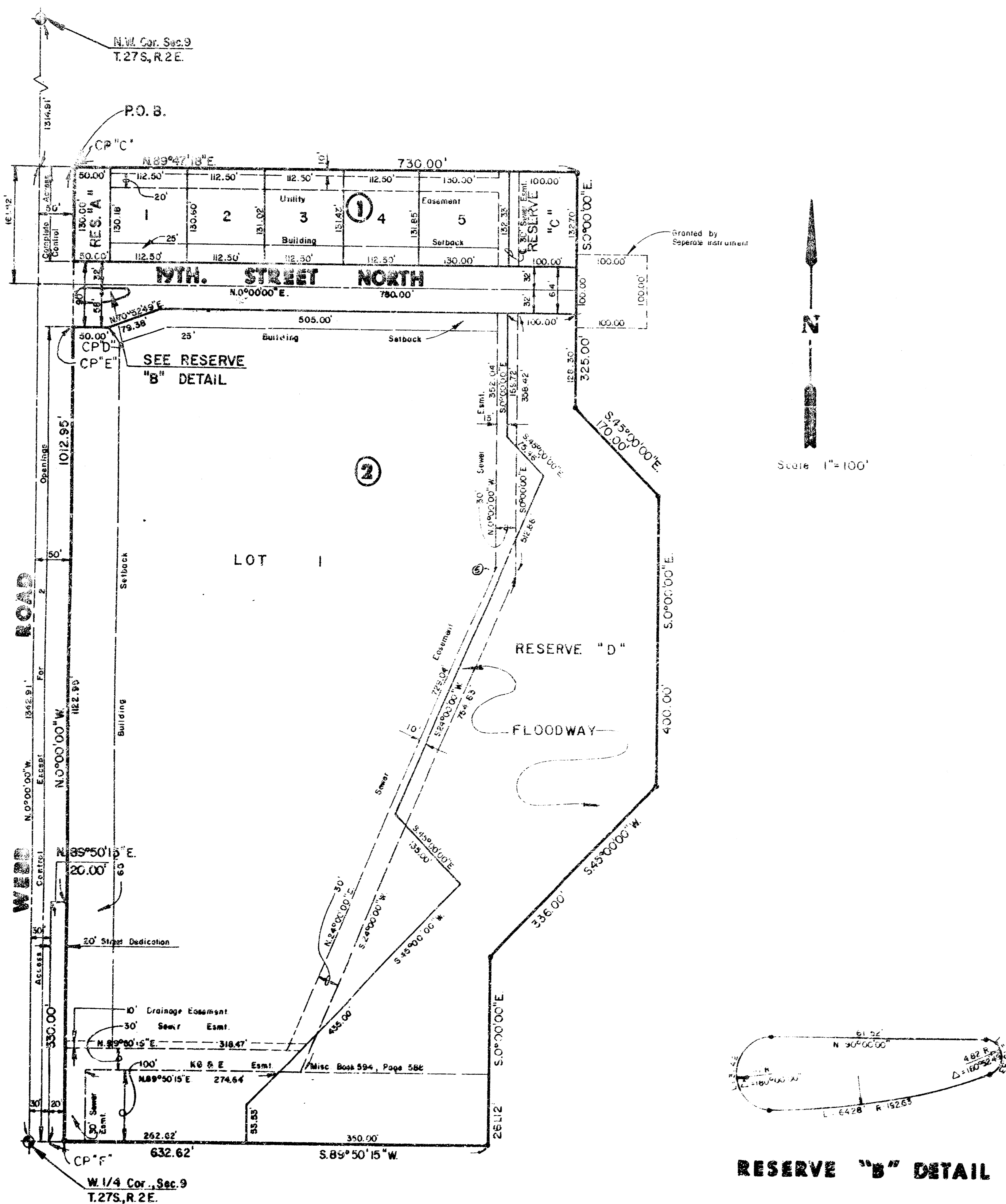
GENERAL NOTES

- MORTAR USED IN MASONRY CONSTRUCTION SHALL CONTAIN 3 PARTS OF PORTLAND CEMENT TO 1 PART OF SAND. CONCRETE USED IN MANHOLE SLABS SHALL BE OF THE QUALITY OF CONCRETE FOR CURB & GUTTER CONSTRUCTION IN THE CITY STANDARD PAVING SPECIFICATIONS. ALL CITY WORK SHALL BE WITHOUT AIR ENTRAINMENT UNLESS OTHERWISE SPECIFIED. THE MANHOLE SLAB AS SHOWN ON THE DRAWING SHALL BE CONSTRUCTED IN UNPAVED AREAS. TYPE "A" SHALLOW MANHOLES SHALL BE CONSTRUCTED WHERE PIPE SIZES ARE SMALLER THAN 24" SHALL HAVE A DIAMETER OF 4". MANHOLES CONSTRUCTED WHERE PIPE SIZES ARE 24" OR LARGER SHALL HAVE AN INSIDE DIAMETER OF 5". COMPLETED MANHOLE SHALL BE WITHOUT LEAKS AND WATER TIGHT.
- REINFORCING STEEL SHALL BE INSTALLED IN THE MANHOLE SLAB TO CONSIST OF NO. 4 BARS PLACED ON 6" CENTER IN BOTH DIRECTIONS. MANHOLE BASE REINFORCEMENT SHALL BE PLACED 4" ABOVE THE MANHOLE BASE. ALL COSTS FOR FURNISHING AND INSTALLING REINFORCING STEEL SHALL BE INCLUDED IN THE UNIT PRICE BID FOR THE MANHOLE.
- THE FLOORS OF ALL MANHOLES SHALL BE SHAPED WITH FLOOR SHAPING. THE MANHOLES WILL BE SELF-CLEANING AND FREE OF OBSTACLES. SHALL BE DEPOSITED AS SEWAGE FLUDES THROUGH THE MANHOLE FROM THE VALVES OF THE INFLOWING PIPES AND THE OUTFLOWING PIPE AS SHOWN ON DRAWINGS. MANHOLE FLOORS SHALL HAVE SLOPES OF 3 INCHES PER FOOT IN AREAS OUTSIDE OF THE FLOOR CHANNELS SLOPED TOWARD THE FLOOR CHANNELS. PIPES LAID THROUGH MANHOLES SHALL HAVE THE TOP HALF BURNISHED TO LINES FOR THE FULL INSIDE DIAMETER OF THE MANHOLE. MANHOLE FLOORS SHALL THEN BE SHAPED AROUND THE BOTTOM HALF OF THE PIPE WHICH FORMS THE FLOOR CHANNEL.
- PIPES INSTALLED WITHIN THE EXCAVATION MADE FOR THE MANHOLE SHALL BE CRADLED WITH CONCRETE TO THE LIMITS OF THE MANHOLE EXCAVATION. IF CLAY PIPE IS USED, THE CRADLE SHALL EXTEND TO THE FIRST JOINT OF THE MANHOLE. THE CRADLE SHALL BE TERRACED AT THE CLAY PIPE JOINTS. A MANHOLE WHICH WILL MAINTAIN THE FLEXIBILITY OF THE JOINT. COST OF CRADLE WITHIN MANHOLE EXCAVATION OR TO CLAY PIPE JOINTS INCLUDING MANHOLE SHALL BE INCLUDED IN THE UNIT PRICE BID FOR THE MANHOLE.
- MANHOLE COVER CASTINGS AND MANHOLE FRAME CASTINGS SHALL CONFORM TO REQUIREMENTS AS INDICATED IN THE STANDARD SPECIFICATIONS AND AS SHOWN IN THE STANDARD DETAIL DRAWINGS.
- THE CHAINS OF INFLOWING PIPES SHALL NEVER BE SET LOWER THAN THE CHAIN OF THE OUTFLOWING PIPE.
- STANDARD SHALLOW MANHOLES TYPE "A" AND "B" SHALL BE PAID FOR AT UNIT PRICE BID PER EACH FOR THE TYPE AND DIAMETER INDICATED. SPECIAL SHALLOW MANHOLES TYPE "A" AND "B" SHALL BE PAID FOR AT THE UNIT PRICE BID PER EACH FOR THE TYPE INDICATED. ALL STANDARD SHALLOW MANHOLE DIAMETERS WILL BE 4' UNLESS INDICATED OTHERWISE.

CITY OF WICHITA, KANSAS
STANDARD SHALLOW MANHOLE
TYPE 'A' AND TYPE 'B'

Designed by	Checked by
Drawn by	Date

**FINAL PLAT OF
EASTMINSTER**
AN ADDITION TO WICHITA, SEDGWICK COUNTY, KANSAS



I, Kenneth H. Bengtson, a Civil Engineer in Kansas, do hereby certify that I have been in responsible charge of surveying and platting of "EASTMINSTER", an addition to Wichita, Sedgwick County, Kansas into Lots, Blocks, Streets and Reserves, the same being accurately set forth in the accompanying plat and described as follows:

A tract of land lying within the northwest quarter of Section 9, Township 27 south, Range 2 east of the 6th P.M., more particularly described as follows:

Commencing at the northwest corner of said northwest quarter; thence on an assumed bearing S 00° 00' 00" E, 1314.91 feet along the west line of said northwest quarter to a point 1342.91 feet north of the southwest corner of said northwest quarter; thence N 89° 47' 18" E, 50.00 feet parallel and 14.00 feet north of the north line of the southwest quarter of said northwest quarter to the point of beginning; thence N 89° 47' 18" E, 700.00 feet parallel and 14.00 feet north of the north line of the southwest quarter of said northwest quarter; thence S 00° 00' 00" E, 325.00 feet; thence S 45° 00' 00" E, 170.00 feet; thence S 00° 00' 00" E, 400.00 feet; thence S 45° 00' 00" E, 336.00 feet; thence S 00° 00' 00" E, 261.12 feet to a point on the south line of said northwest quarter; thence along the south line of said northwest quarter S 89° 50' 15" W, 632.52 feet to a point 30.00 feet east of the west line of said northwest quarter; thence N 00° 00' 00" E, 330.00 feet parallel and 30.00 feet east of the west line of said northwest quarter; thence N 89° 50' 15" E, 23.00 feet to a point 30.00 feet east of the west line of said northwest quarter; thence N 00° 00' 00" E, 1012.95 feet parallel and 50.00 feet east of the west line of said northwest quarter to the point of beginning.

I hereby certify that the details of this plat are correct to the best of my knowledge and belief this 25 day of March, 1986.

Kenneth H. Bengtson, P.E.
Mid-Kansas Engineering Consultants, P.A.
3500 N. Rock Road, Bldg. 800
Wichita, KS 67220

Know all men by these presents that we the undersigned property owners of the land as above set forth in the Civil Engineers Certificate, have caused the same to be surveyed and platted into lots, blocks, streets, and reserves, the same to be known as "EASTMINSTER", an addition to Wichita, Sedgwick County, Kansas. The streets are hereby dedicated to and for the use of the public. Easements for the construction and maintenance of public utilities and drainage, as indicated on the accompanying plat are hereby granted. Reserves "A", "B", "C", & "D", are platted for construction and maintenance of public utilities and landscaping. Reserves "A" and "B" are also platted for entry monuments. Reserve "C" is also platted for drainage. Reserve "D" is platted for floodway purposes. All reserves shall be owned and maintained by the homeowners' association. The floodways shall be the responsibility of the owners until such time as the governing body exercising jurisdiction elects to assume the responsibility for the maintenance and improvement of the drainage, provided further, that no structure shall be constructed or within said floodway, nor shall any fill, change of grade, creation of channel or other work be carried on without the permission of the City Engineer. All abutters' rights of access to or from Webb Road over and across the west line of Lot 1, Block 2 and the west line of Reserve "A" of "EASTMINSTER" are hereby granted to the City of Wichita, Kansas except Lot 1, Block 2 shall have access at two locations to Webb Road as determined by the City Engineer.

Eastminster United Presbyterian Church

By: William A. Boettger, President
Board of Trustees

STATE OF KANSAS)
SEDGWICK COUNTY)

Be it remembered that on this 25th day of March, 1986, before me a Notary Public in and for Sedgwick County, Kansas, William A. Boettger, President, Board of Trustees, on behalf of Eastminster United Presbyterian Church, do personally appear to me one and the same person who executed the foregoing instrument of writing and duly acknowledged the execution of the same. In testimony whereof I have hereunto set my hand and affixed my notarial seal the day and year above written.

Mary Ellen Conzelmann, Notary Public
My Appointment Expires: 1-31-87

This plat of "EASTMINSTER" has been submitted to and approved by the Wichita-Sedgwick County Metropolitan Area Planning Commission, Wichita, Kansas.

Dated this 25th day of February, 1986.

WICHITA-SEDGWICK COUNTY METROPOLITAN AREA PLANNING COMMISSION

William J. Goebel, Chairman
Michael E. Lindbeck, Secretary

This plat approved and all dedications shown hereon, if any, accepted by the City Commission of the City of Wichita, Kansas, this 25th day of March, 1986.

Robert C. Brown, Mayor
Donald C. Gistick, City Clerk

Entered on transfer record this 25th day of March, 1986.

Don Wright, County Clerk

STATE OF KANSAS)
SEDGWICK COUNTY)

This is to certify that this instrument was filed for the Register of Deeds office this 25th day of March, 1986.

Pat Kettle, Register of Deeds

Ed Resa, Deputy