

STORM WATER SEWER TO SERVE Harvest Chapel 2nd Addition

Lot 1

Private Project Number
1046 PPS (607881)

CITY OF WICHITA, KANSAS
Michael E. Lindebak, P.E. City Engineer
September 2000

Index

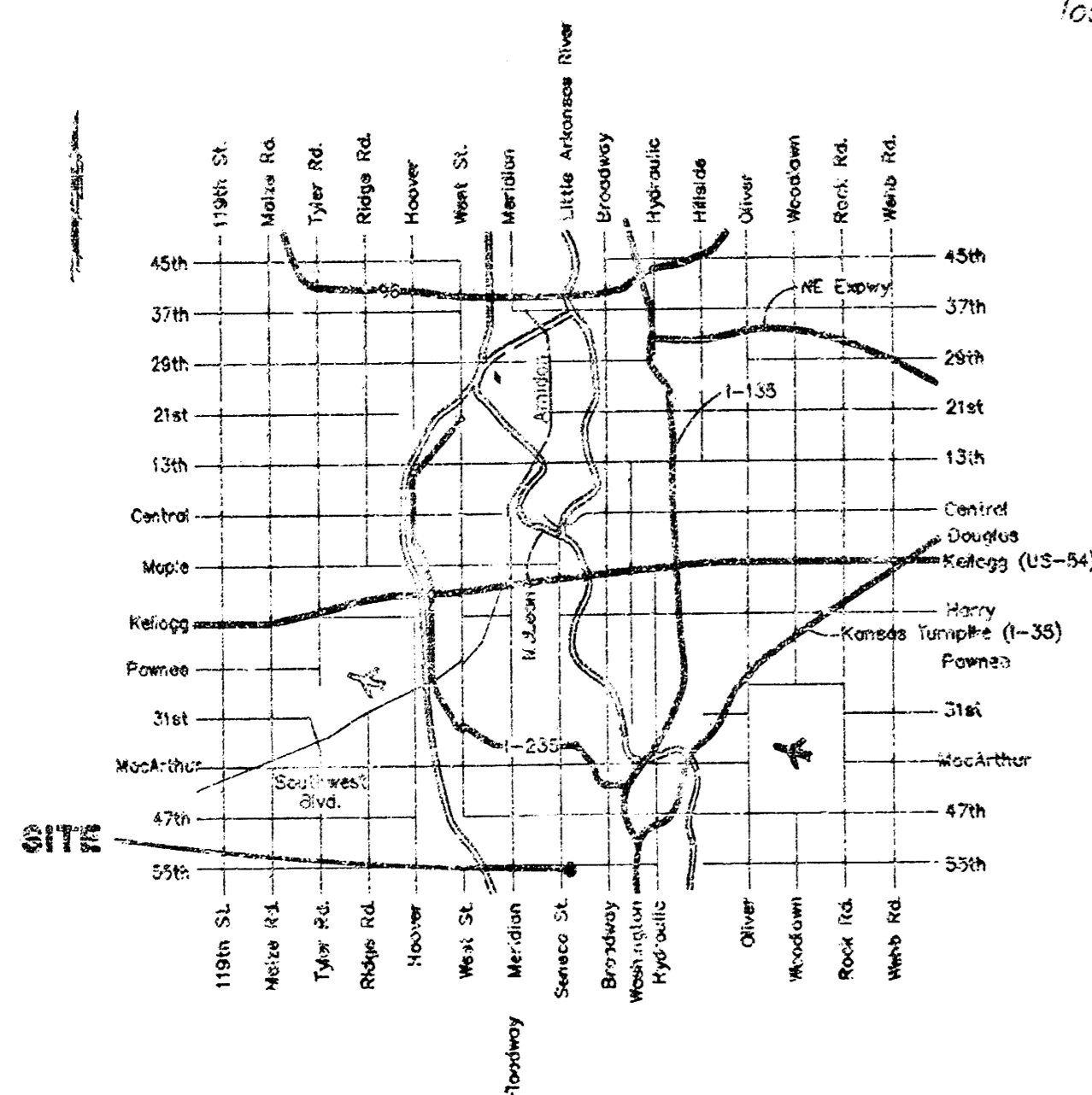
The/Plan/Profile Sheet	1
Detail Sheet	2
Copy of Plot	3

Legal Description:

REPLAT OF LOT 1, HARVEST CHAPEL ADDITION, WICHITA, SEDGWICK COUNTY, KANSAS; TOGETHER WITH THE FOLLOWING DESCRIBED TRACT: BEGINNING AT THE SW CORNER OF THE NORTH 7 1/2 ACRES OF THE NW 1/4 OF THE NW 1/4 OF SEC. 28, TWP. 28S, R-1-E OF THE 6TH P.M., SEDGWICK COUNTY, KANSAS THENCE EAST 441.15 FEET PARALLEL WITH THE SOUTH LINE OF THE AFORESAID 7 1/2 ACRES, THENCE NORTH 93.75 FEET, THENCE WEST 441.15 FEET, THENCE SOUTH 98.75 FEET TO THE POINT OF BEGINNING.

Site Benchmark:

COW Benchmark:
BENCHMARK: COW BENCH LOCATED 66' WEST OF CENTER LINE OF SENECA, 49.4' NORTH OF CENTER LINE OF 55TH STREET SOUTH & 26.03' NORTHWEST OF SECTION CORNER IRON.
ELEVATION = 83.56 CITY DATUM
ELEVATION = 1270.96 WSL



Location Map

General Notes

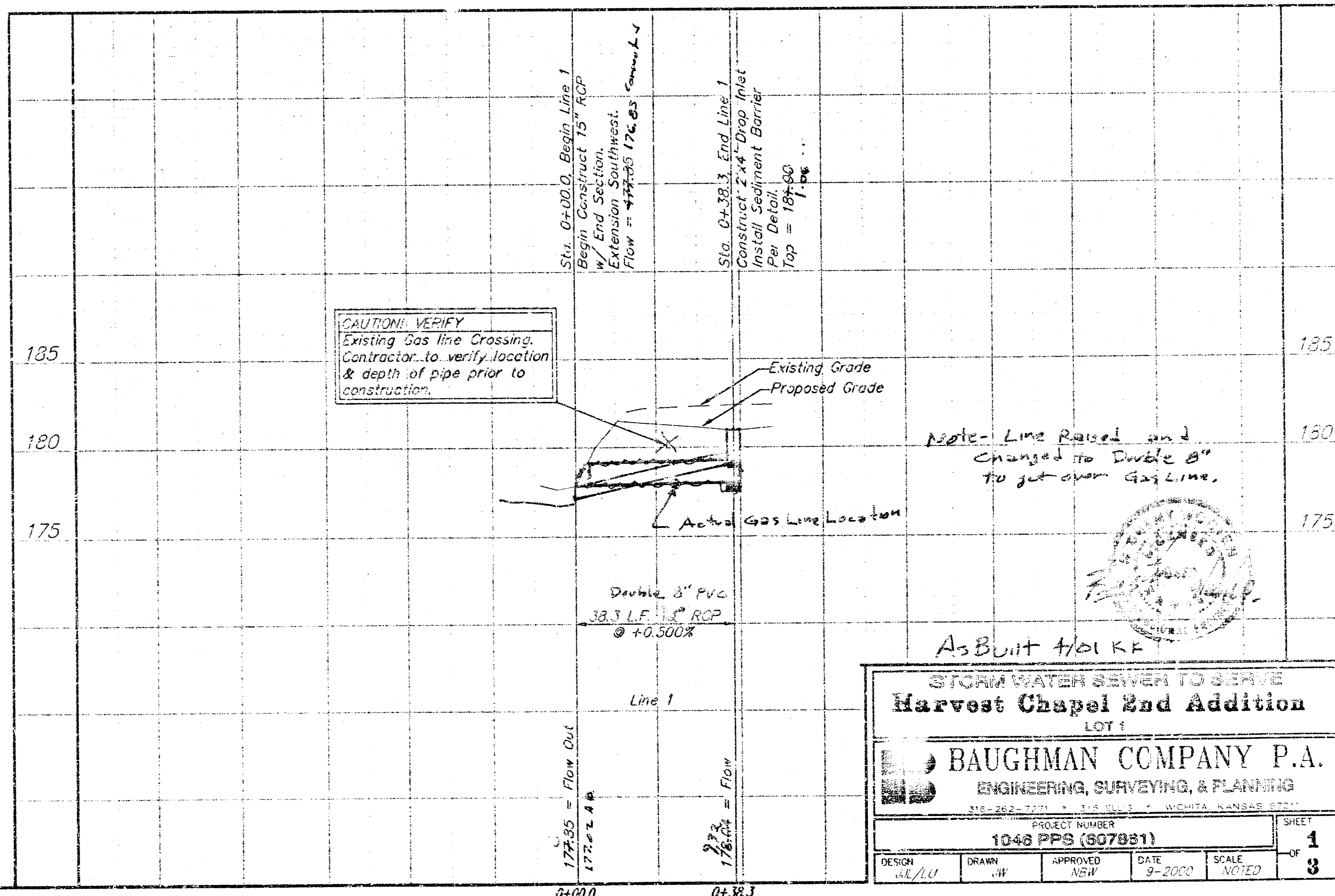
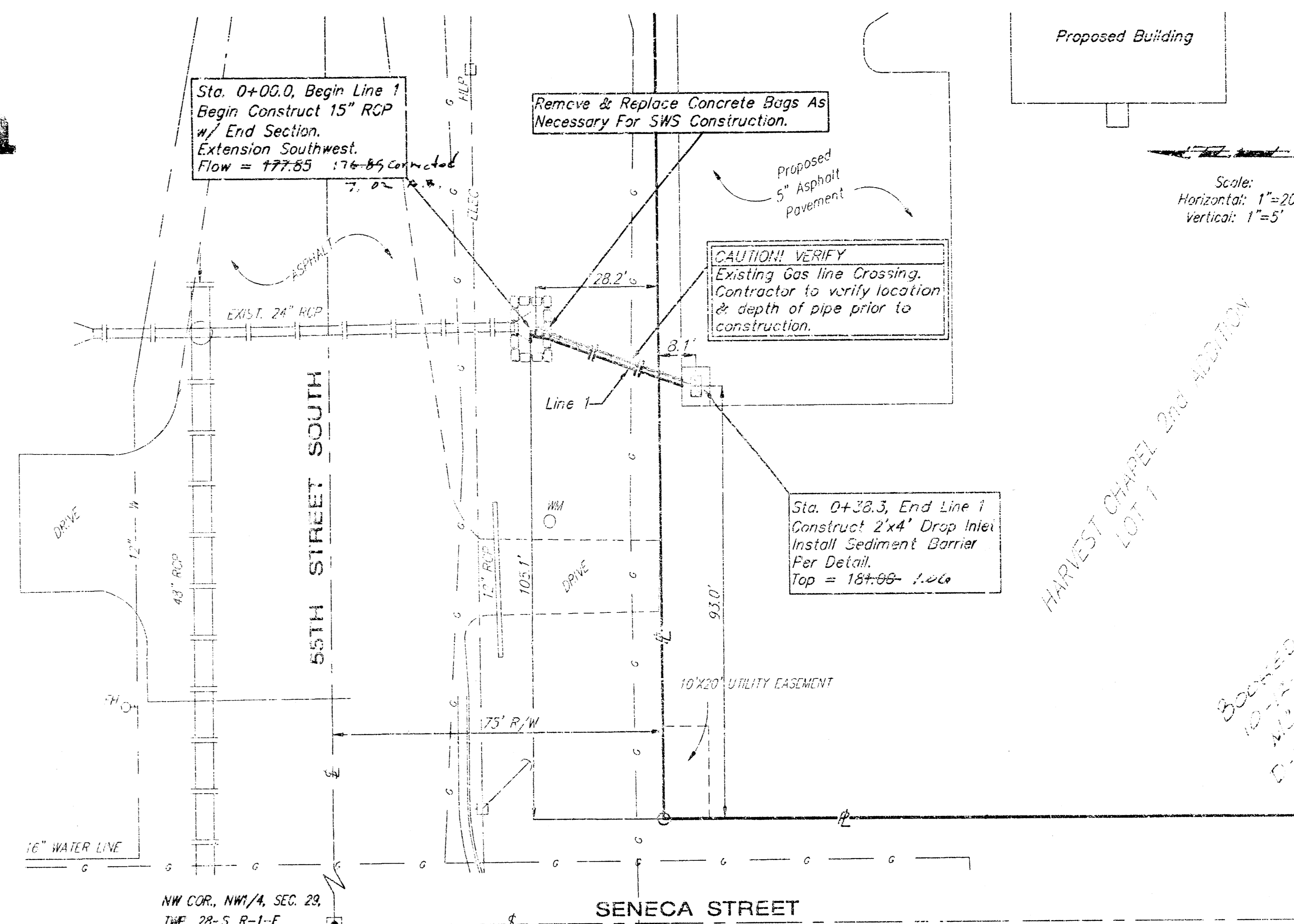
- Contractor will be required to provide notice to utility companies a minimum of forty-eight (48) hours prior to any excavation, as follows:
Kansas One-Call 687-2470
The Contractor must notify the following in case of an emergency:
Cox Communications 252-4270
Kansas Gas Service Company 353-3500
Kansas Gas & Electric Company 387-2800
Peoples Gas Company 342-7600
Southwestern Bell Telephone Company 1-571-2611
City of Wichita Water Department 268-4555
City of Wichita Sewer Department 268-4071
- Utility service lines, valves, valve boxes, meters, et cetera are to be adjusted, as necessary by others prior to construction unless the plans specifically call for their adjustment by the Contractor or unless the plans specifically identify a utility to be adjusted by its owner during construction. Existing utilities and their location, as shown on the plans represent the best information obtainable for design and shall be field verified. The contractor will be required to work around existing utilities within the right-of-way which do not conflict with proposed construction.
- All disturbed areas not intended for pavement or sidewalk construction shall be seeded with Kansas Premium Fescue Blend at a rate of 8 lb./1000 Sq. Ft., fertilized with a 16-20-5 ratio at a rate of 4 lb./1000 Sq. Ft., and mulched with Prairie Hay at a rate of 92 lb./1000 Sq. Ft. Mulch shall be "patted" with forks or punched into soil to reduce loss due to wind.
- Contractor shall not start work on the project until the project inspector is assigned to the project and is present on the site. Any work zone without inspection will be required to be uncovered for inspection.
- Rubble from the removal of miscellaneous structures and excess excavation which is to be wasted shall be disposed of on sites to be provided by the Contractor. These sites shall be approved by the Engineer as to suitability, appearance and site location. Locations that, in the opinion of the Engineer, will leave an unsightly appearance will not be approved. All disposal sites must be approved by the Kansas Department of Health and Environment. Material either stockpiled or disposed of in a flood plain would require a Kansas State Board of Agriculture permit. Any material dumped in waters of the United States or wetlands is subject to U.S. Corps of Engineers permitting regulations. Any material buried or stockpiled beyond approved construction limits would require additional archaeological investigations unless buried in a previously approved borrow location.

APPROVED AS NOTED
BY CITY ENGINEER OF WICHITA

Storm Sewers *Julianne Hillman 9-20-00*

NOTE TO CONTRACTORS

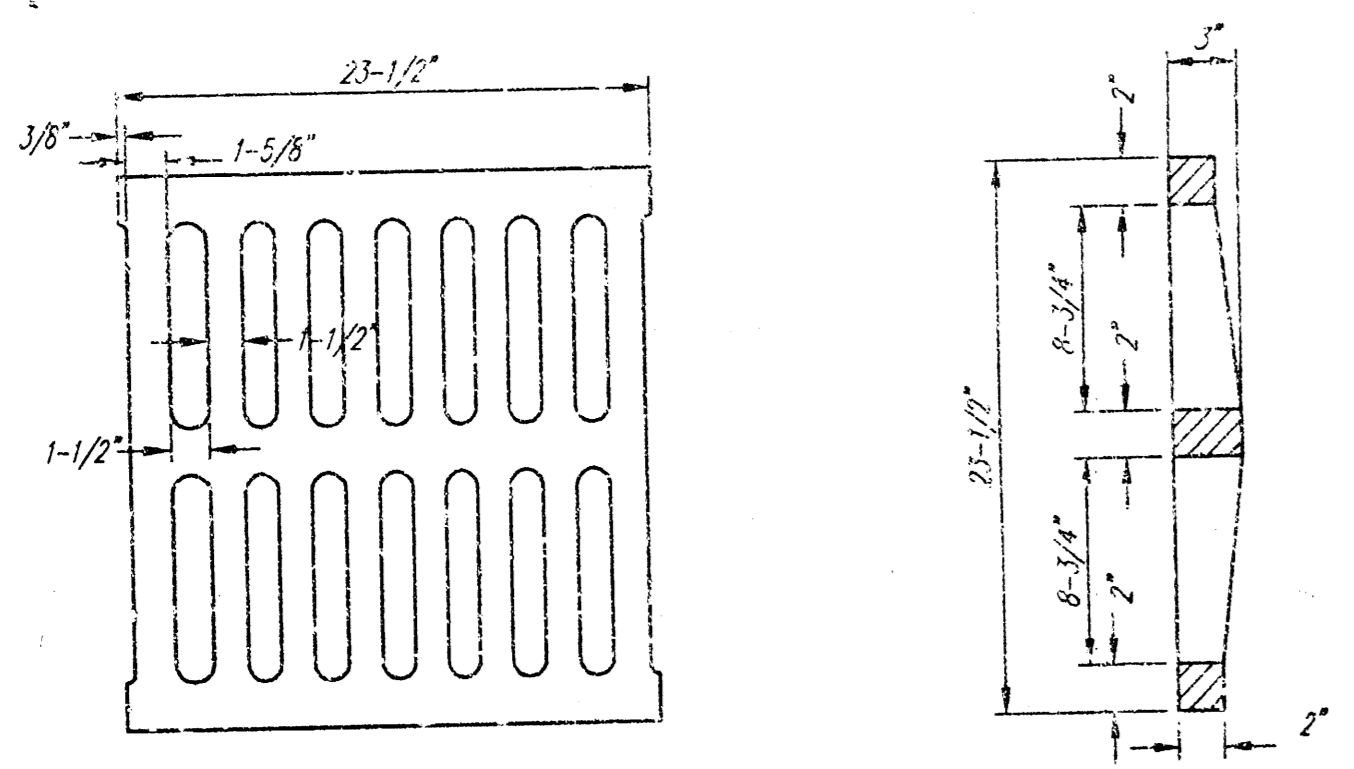
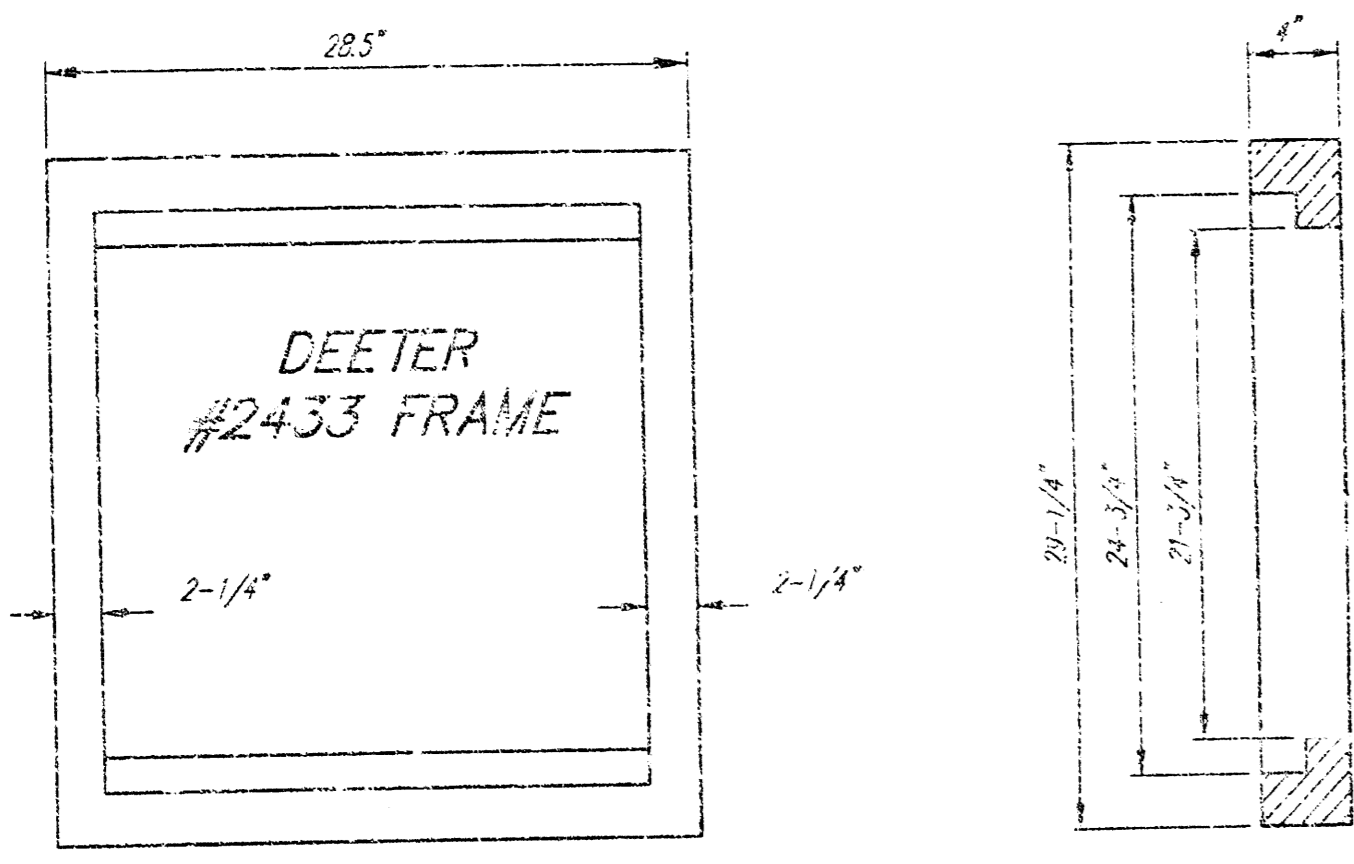
Installation, inspection and testing for this project is to be provided by a Licensed Consulting Engineering firm under contract with the Owner/Developer. Said inspection to be in accordance with the City of Wichita standard construction engineering practices and certified by a Licensed Professional Engineer. No work shall be performed in dedicated easements or public right-of-way by the Contractor without such inspector nor shall any work be commenced without written authorization by the City Engineer. All Construction and Materials shall comply with the City of Wichita Specifications and Standards (on file and available in the City Engineer's Office).



STORM WATER SEWER TO SERVE
Harvest Chapel 2nd Addition
LOT 1

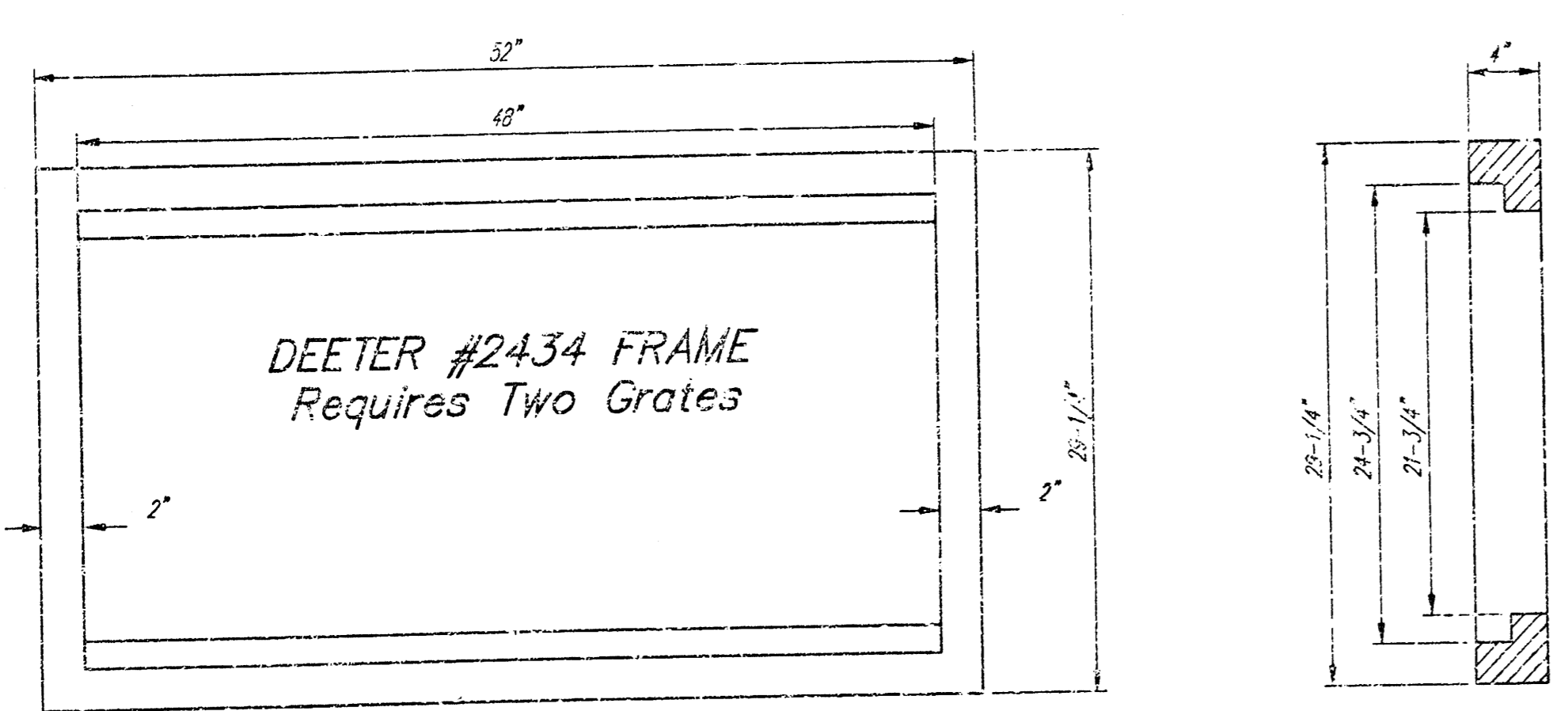
BAUGHMAN COMPANY P.A.
ENGINEERING, SURVEYING, & PLANNING
316-262-7271 • 1115 S. W. 11th St. • WICHITA, KANSAS 67207

DESIGN	ML/LU	DRAWN	JW	APPROVED	NEW	DATE	9-2000	SCALE	NOTED	SHEET	1
										OF	3



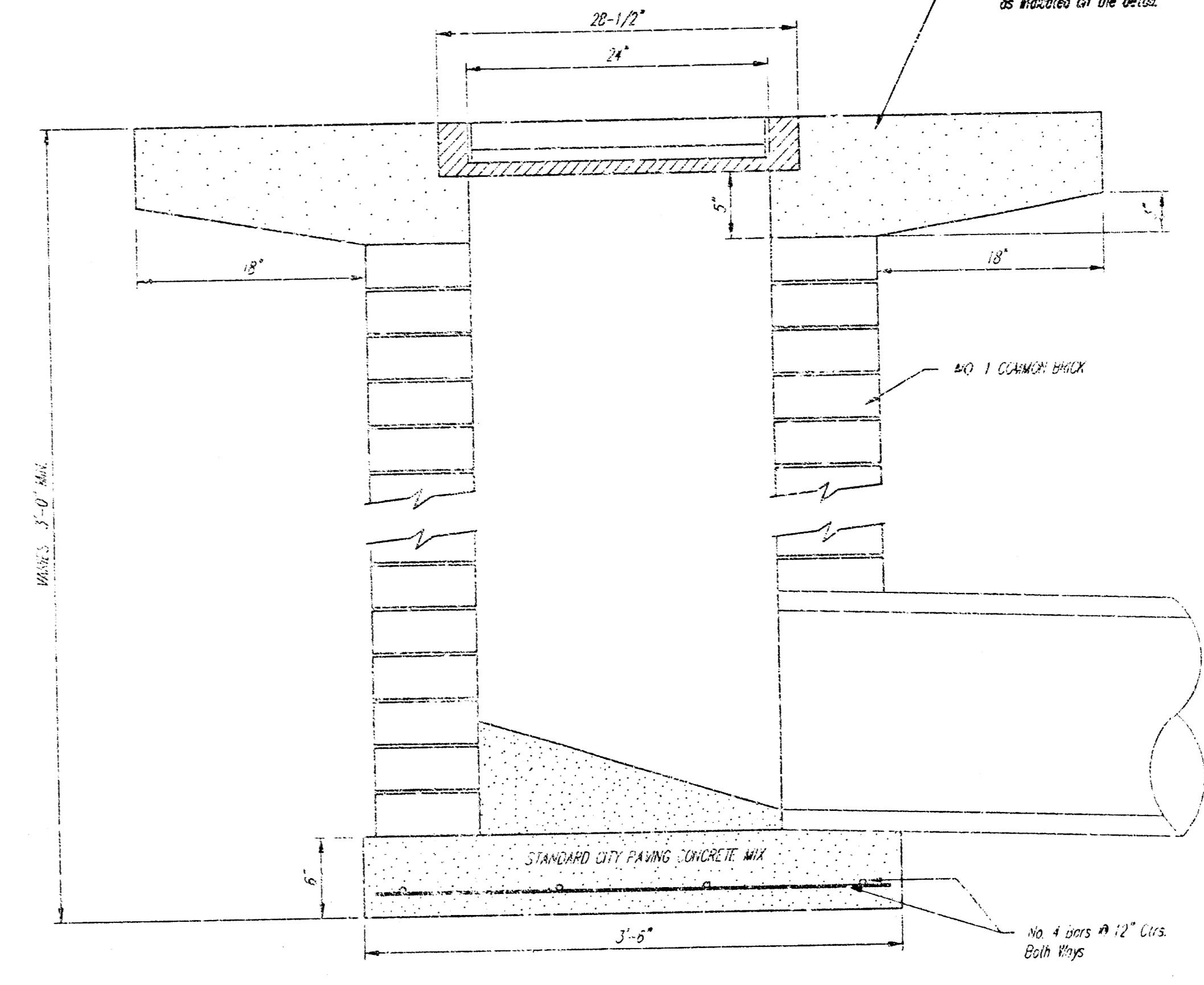
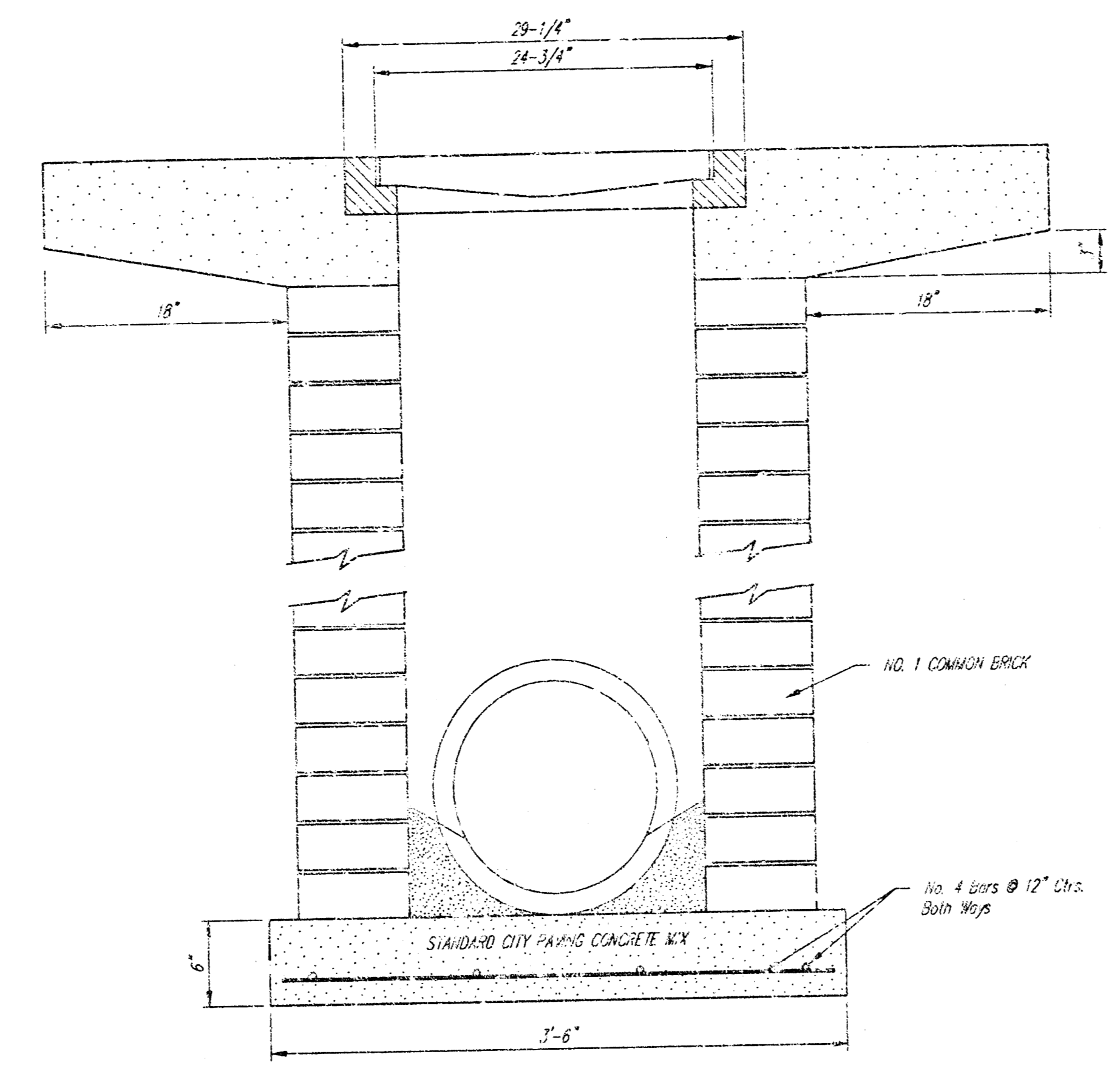
DEETER #2433 GRATE

24" x 24" Frame and Grate Detail

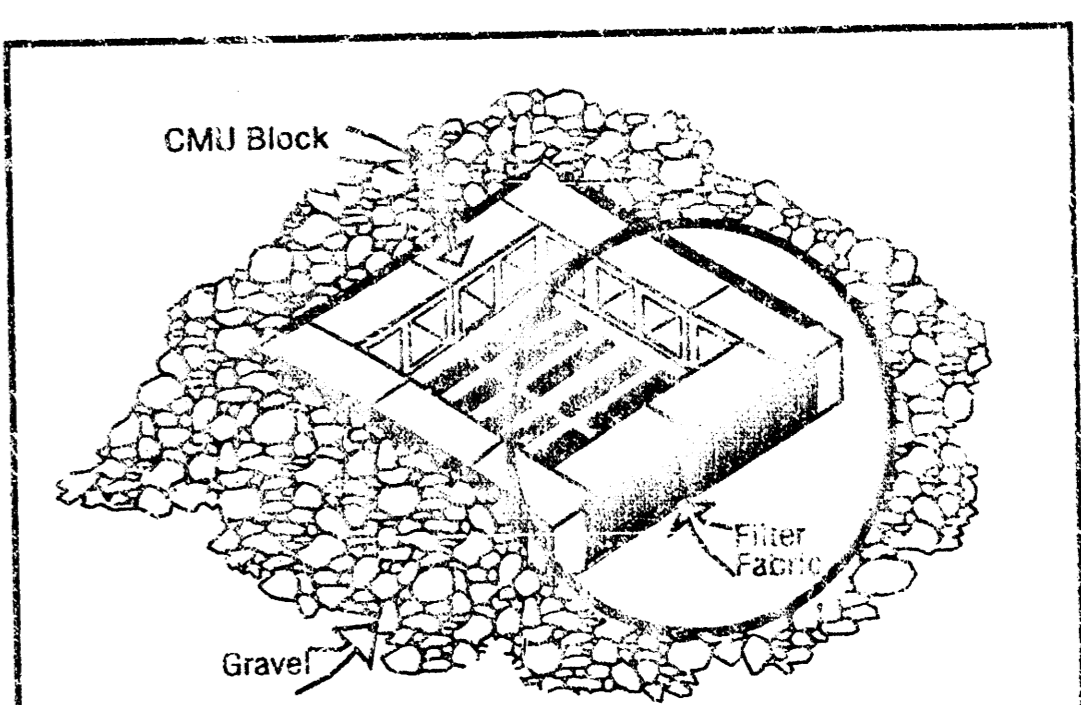
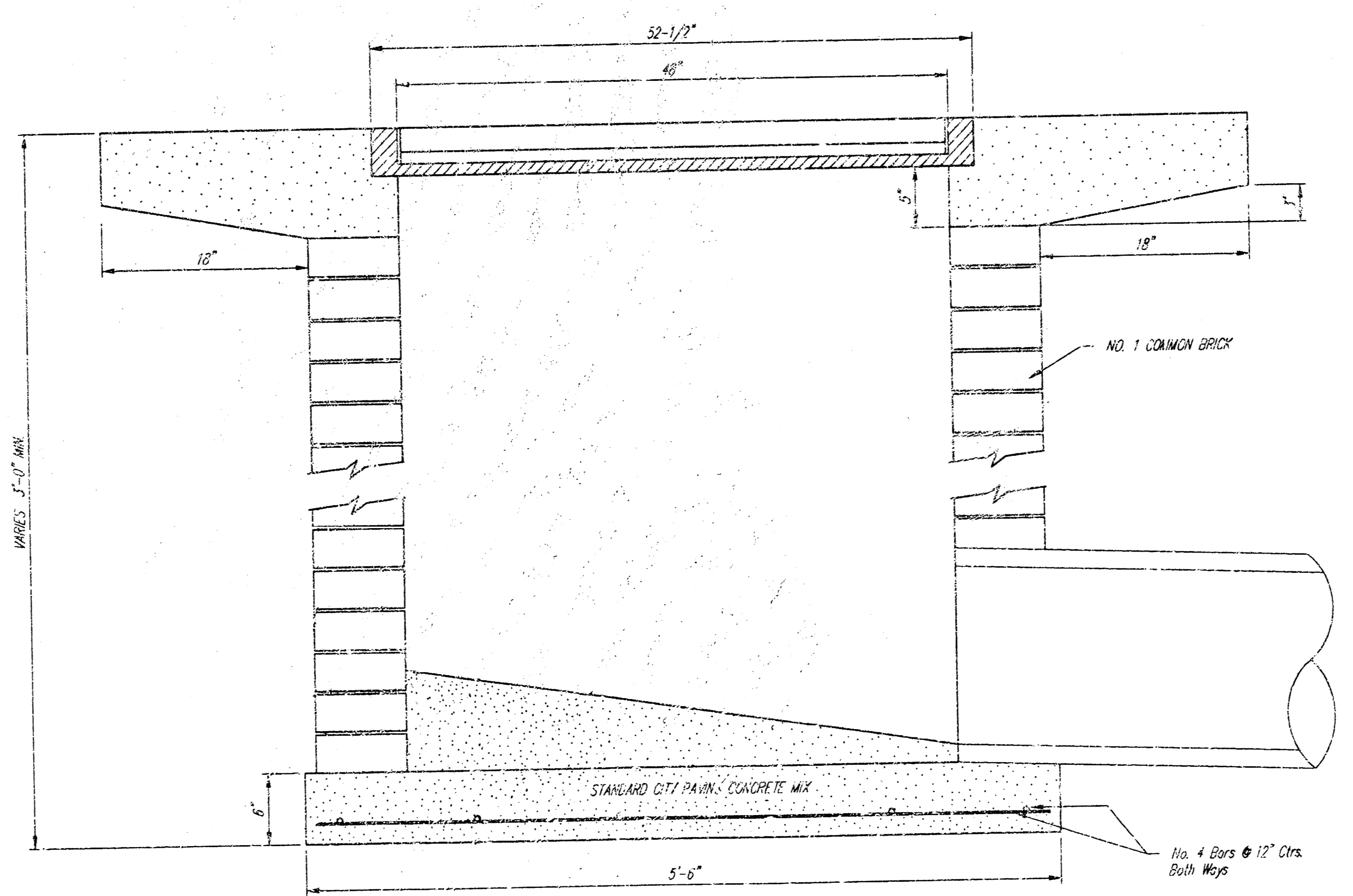


Double 24" x 24" Frame Detail

NOTE: Grates shall be imprinted on the top surface with "CITY OF WICHITA" using letters at least 1" in height. Other marking methods may be approved by the engineer.



Note: Concrete apron shall be constructed around the inlet when inlet is located in an unproved area. Where the inlet is adjacent to pavement, the pavement thickness shall be 18 inches to the inlet in 18 inches as indicated on the detail.



NOTES:
Frequent maintenance is required to minimize short-circuiting and to remove sediment deposits and buildup.
Wrap filter fabric around all CMU block and backfill with 2"-3" gravel rock to allow sediment deposits.
DO NOT cover inlet or grate with filter fabric.

INLET PROTECTION
Storm Drain with Gravel Apron

CITY OF WICHITA
STANDARD DROP INLET

BAUGHMAN COMPANY P.A.
ENGINEERING, SURVEYING, & PLANNING

PROJECT NUMBER
1048 PPS (907831)

DESIGN STAFF	DRAWN STAFF	APPROVED NGW	DATE 8-20-00	SCALE NONE	SHEET 3
--------------	-------------	--------------	--------------	------------	---------

