

# GENERAL NOTES

1. Contractor will be required to provide a minimum notice of 48 hours to utility companies prior to starting any excavation as follows:

Kansas One-Call 687-2470

The Contractor must notify the following utility companies in case of an emergency:

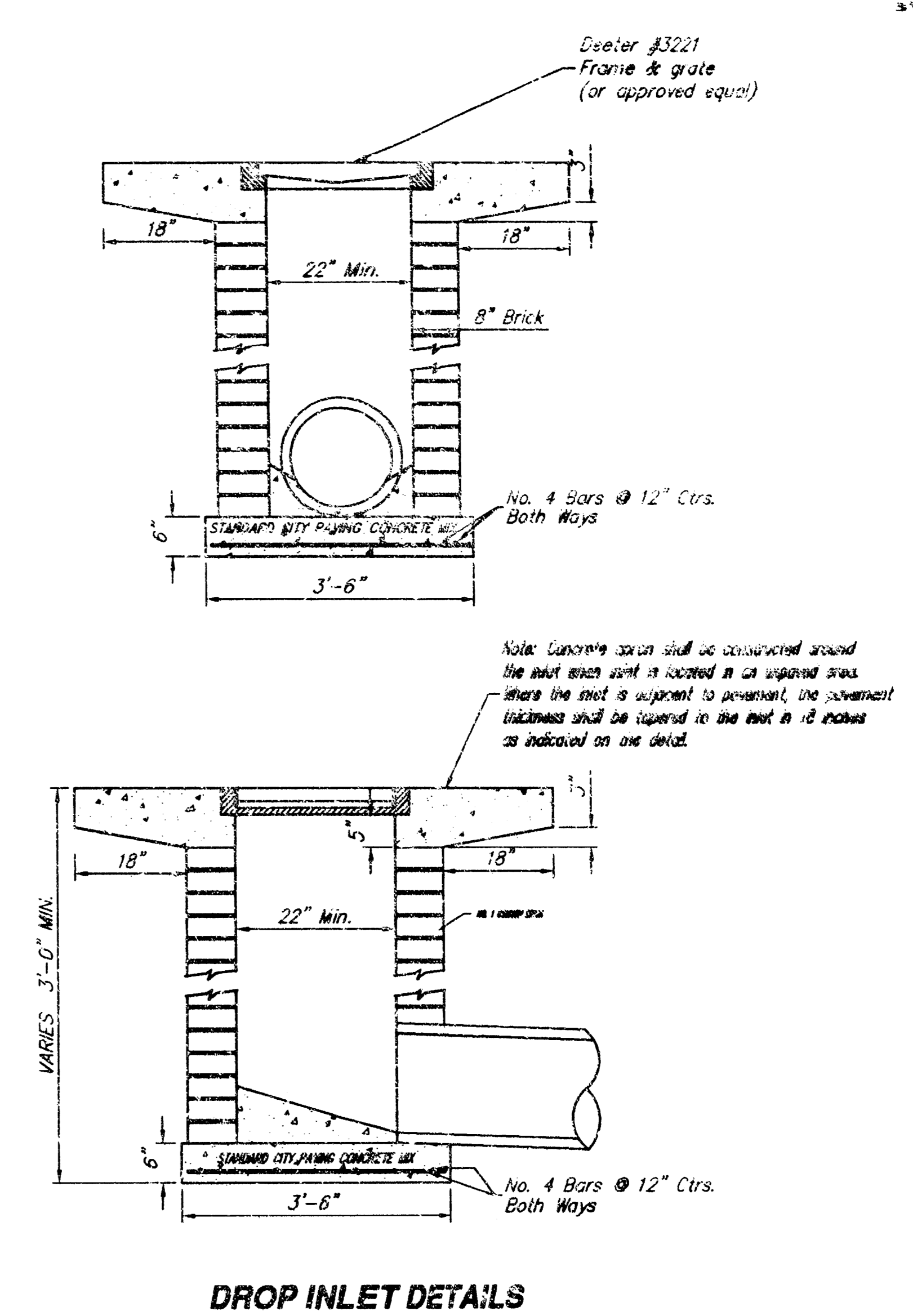
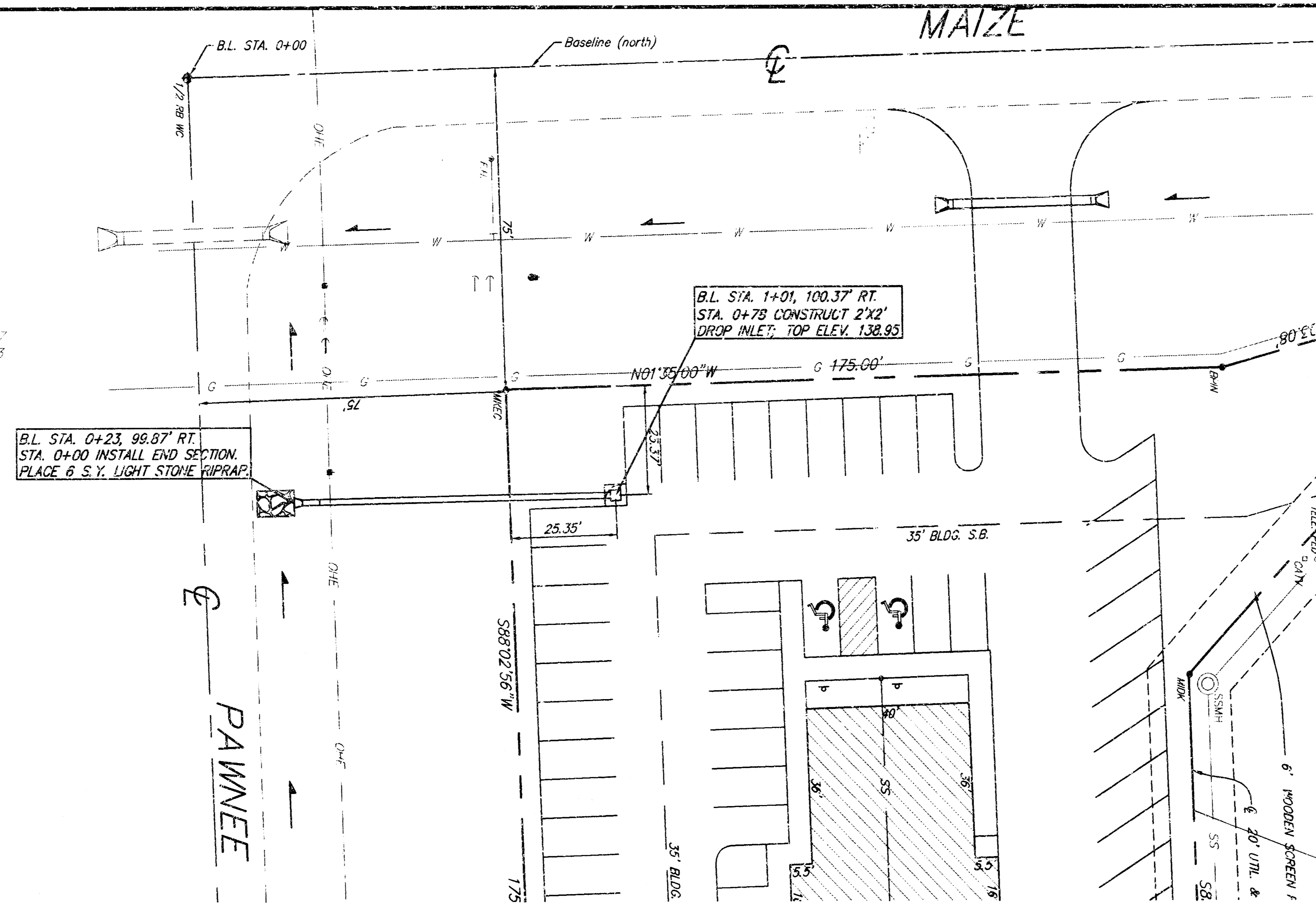
Cox Communications 262-0661  
 Kansas Gas Service 353-8600  
 KGE Electric 383-8600  
 Peoples Natural Gas Company 1-800-303-0357  
 Southwestern Bell Telephone Company 1-800-286-8313  
 City of Wichita Water Department 262-6000  
 City of Wichita Sewer Maintenance 262-6000

2. All work and materials on this project shall conform to City of Wichita standard specifications for Sewer Construction, except that the Contractor may use Advance Drainage Systems Ultra pipe or approved equal, or alternate drop inlet design approved by the Engineer.

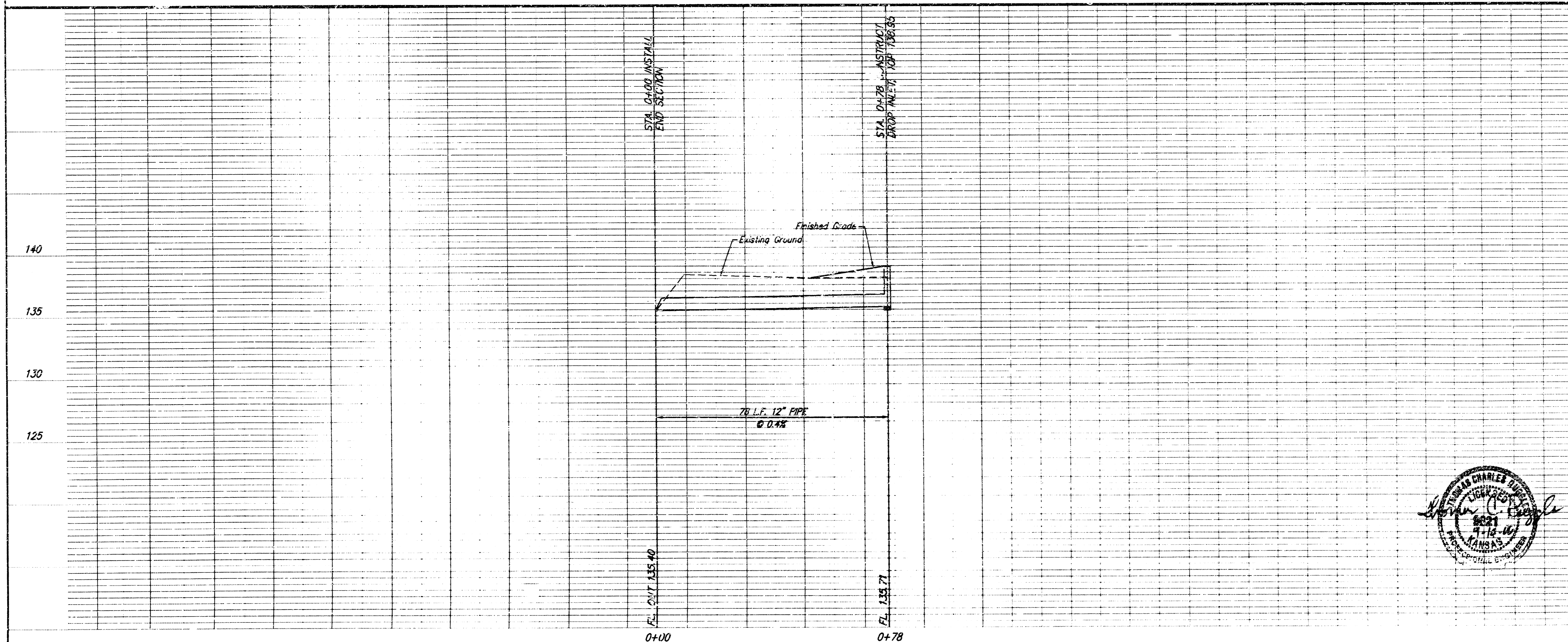
3. No roof drains are to be connected to this storm sewer except by permit from the Office of Central Inspection.

4. Two-way traffic on Pawnee shall be maintained during construction.

SRB  
 SCALE  
 1" = 20' Horiz. (Plan)  
 1" = 5' Vert. (Profile)



Booked E-B 12/30/03 NAL Per Plan

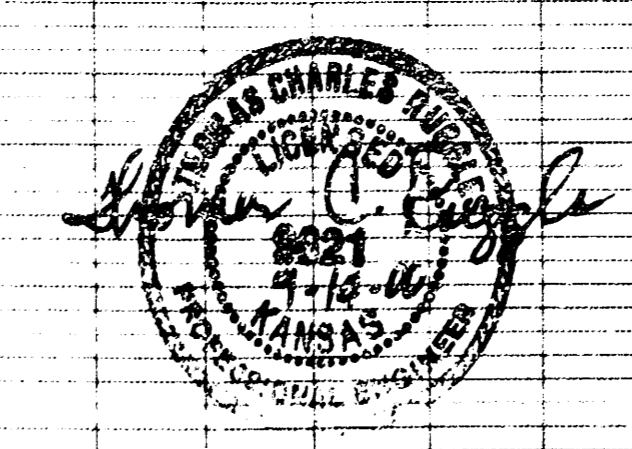


APPROVED AS NOTED  
 BY CITY ENGINEER OF WICHITA

Sanitary Sewers \_\_\_\_\_  
 Storm Sewers VRH 9/8/00  
 Driveway Approaches \_\_\_\_\_  
 Water Mains \_\_\_\_\_  
 Paving \_\_\_\_\_

NOTE TO CONTRACTORS

Inspection and testing for this project are to be provided by a Licensed Consulting Engineering Firm under contract with the Owner/Developer. Said inspection to be in accordance with the City of Wichita standard construction engineering practices and certified by a Licensed Professional Engineer. No work shall be performed in dedicated easements or public right-of-way by the Contractor without such inspection, nor shall any work be commenced without written authorization by the City Engineer.



**PIZZA VILLA, 2342 SOUTH MAIZE PRIVATE STORM SEWER PLAN**  
 LOT 14, BLK. 3, PRAIRIE WOODS ADD., WICHITA, KANSAS

SRB 924 NORTH MAIN WICHITA, KANSAS 67203 316-264-8008 316-264-4621  
 http://www.srb.com E-Mail: erb@srb.com

SAVOY, RUGGLES & BOHM, P.A.  
 ENGINEERING & SURVEYING

PROJECT NUMBER 1049 PPS (607861)

DESIGN	DRAWN	UTILITY	REVIEW	DATE	REVISED
TOR	JTS	JCR		Sept. 14, 2000	

48 08 01 02