

KELLOGG STREET, HWY 54

SCALE

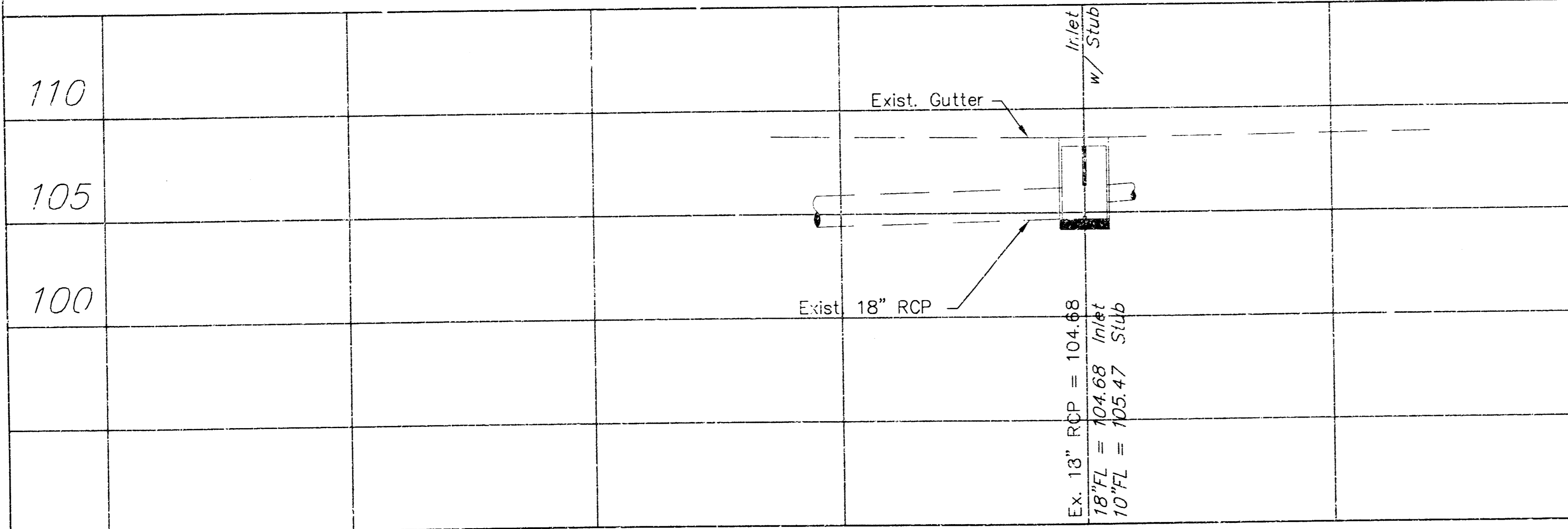
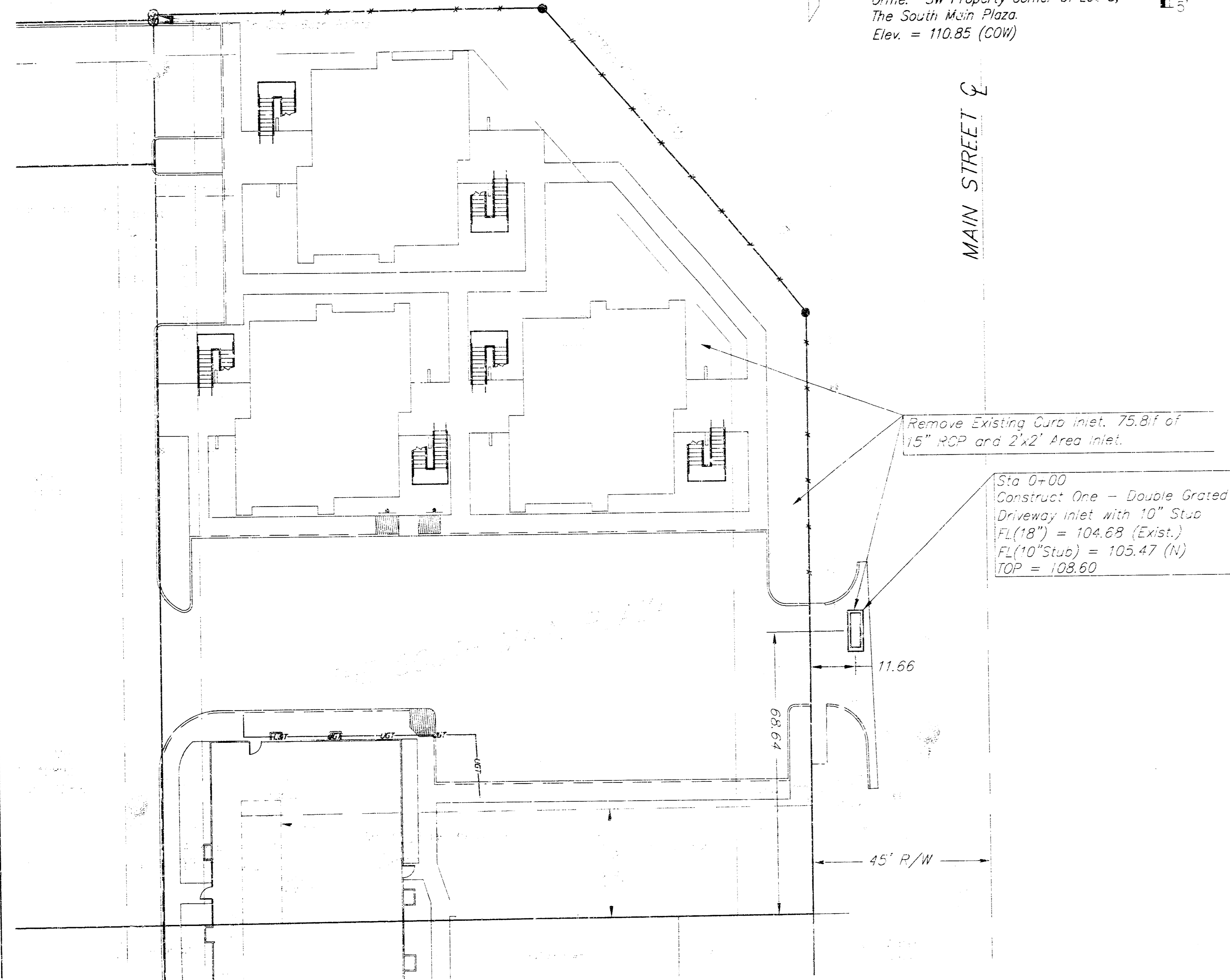
20' 0 20' 40'



BENCHMARK

"+" Cut in NE Corner of Water & Orme, SW Property Corner of Lot 3, The South Main Plaza.
Elev. = 110.85 (COW)

MAIN STREET



STORM SEWER IMPROVEMENTS TO SERVE Cambridge Suites

Lot 2&4, The South Main Plaza
Project Number
1057 PPS(607881)

CITY OF WICHITA, KANSAS

Michael E. Lindebak, P. E., City Engineer

GENERAL NOTES

SHEET
1 Plan & Profile
2 Grated Inlet Detail

1. Contractor will be required to provide notice to utility companies a minimum of twenty-four (24) hours prior to any excavation, as follows:

Kansas One-Call 687-2470

The Contractor must notify the following in case of an emergency:

Cablevision	262-4270
or	263-2061
K.P.L. Gas Service Company	383-8650
Kansas Gas & Electric Company	383-8600
Peoples Natural Gas	9-2-8811
or	1-800-303-0357
Southwestern Bell Telephone Company	1-571-2611
City of Wichita Water Department	268-4908
City of Wichita Sewer Department	268-4071

2. Exist. utilities and their locations, as shown on the plans, represent the best information obtainable for design. Location information has been obtained from the various utility companies and is either from company record drawings or company-provided field locations. The Contractor will be required to work around existing utilities which do not conflict with proposed construction.

3. The Contractor to verify utility locations prior to construction of this project.

4. Utility service and installation shall be coordinated with the respective utility owners. Contacts are:

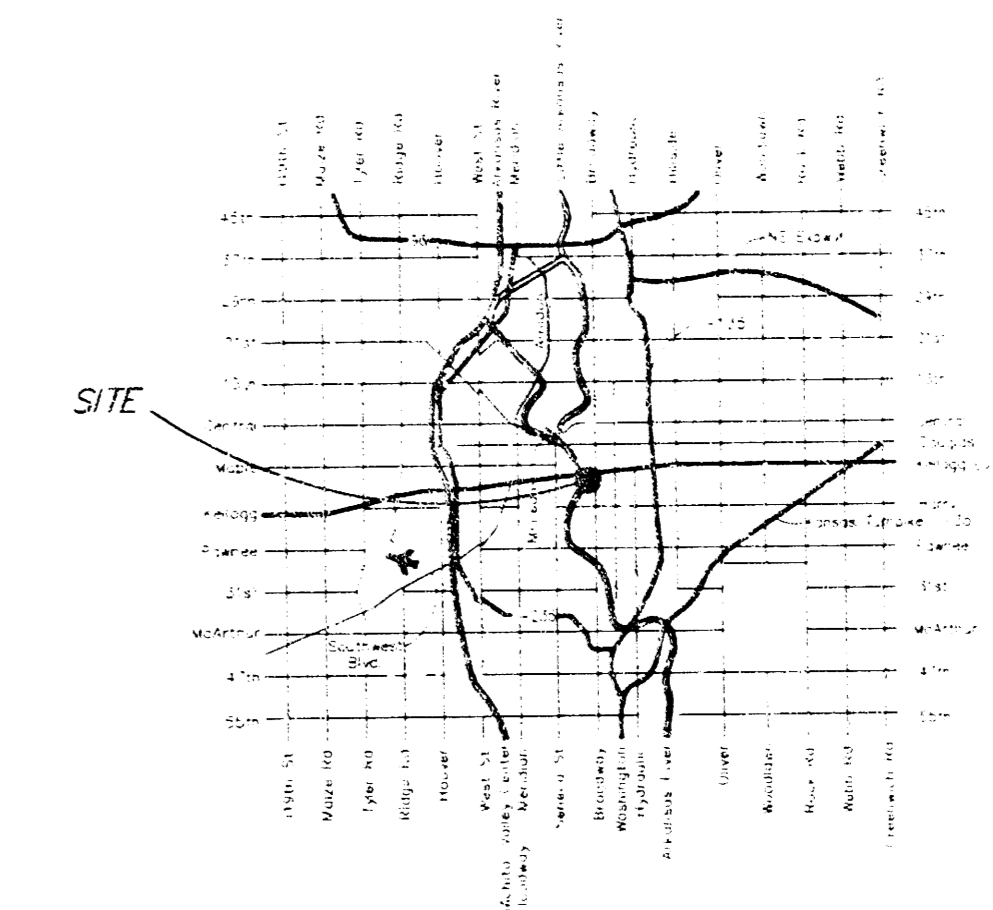
K&E Gas	Steve Orth	261-6267
K. G. & E.	Miles Capps	261-6434
Wichita Water	Bill Perkins	268-4555
	Paul Bryant	268-4555
Southwestern Bell	Jim Tobin	268-2759

5. All areas disturbed by construction shall be seeded with rye Rebel II Rescue grass at a rate of 350 lbs./acre immediately following construction in that area.

6. Traffic affected by the construction of this project shall be handled in accordance with the latest edition of the Manual on Uniform Traffic Control Devices.

7. All lawn/turf areas disturbed by construction of proposed improvements shall be restored with the same grass/ sod as existing. Restoration of disturbed areas shall include, but not be limited to, top soil preparation, seeding, mulch and/or reseeded. All seeding/sodding work shall be in accordance with the City of Wichita standard specifications and the City of Wichita administrative regulation No. AR78 which governs cleanup and replacement following construction. All costs for this work shall be subsidiary to the lump sum price bid for "Site Restoration."

8. Benefits District Consist of Lot 2 & Lot 4, The South Main Plaza.



LOCATION MAP

AS-BUILT

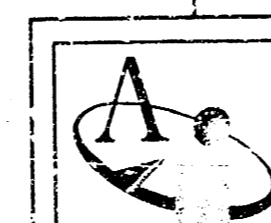
Date: 11/14/01
Drawn: M. A. Berg

Michael E. Lindebak
11/19/01

APPROVED AS NOTED BY CITY ENGINEER OF WICHITA

SANITARY SEWERS VRH 11/19/01

Inspection and testing for this project shall be provided by a Licensed Consulting Engineering Firm under contract with the Gates/Developer. Said inspection is to be in accordance with the City of Wichita standard construction engineering practices and certified by a Licensed Professional Engineer. No work shall be performed in dedicated easements or public right-of-way by the Contractor without such inspection nor shall work be commenced without written authorization by the City Engineer. All construction and materials shall comply with the City of Wichita Specifications and Standards (on file and available in the City Engineer's Office).

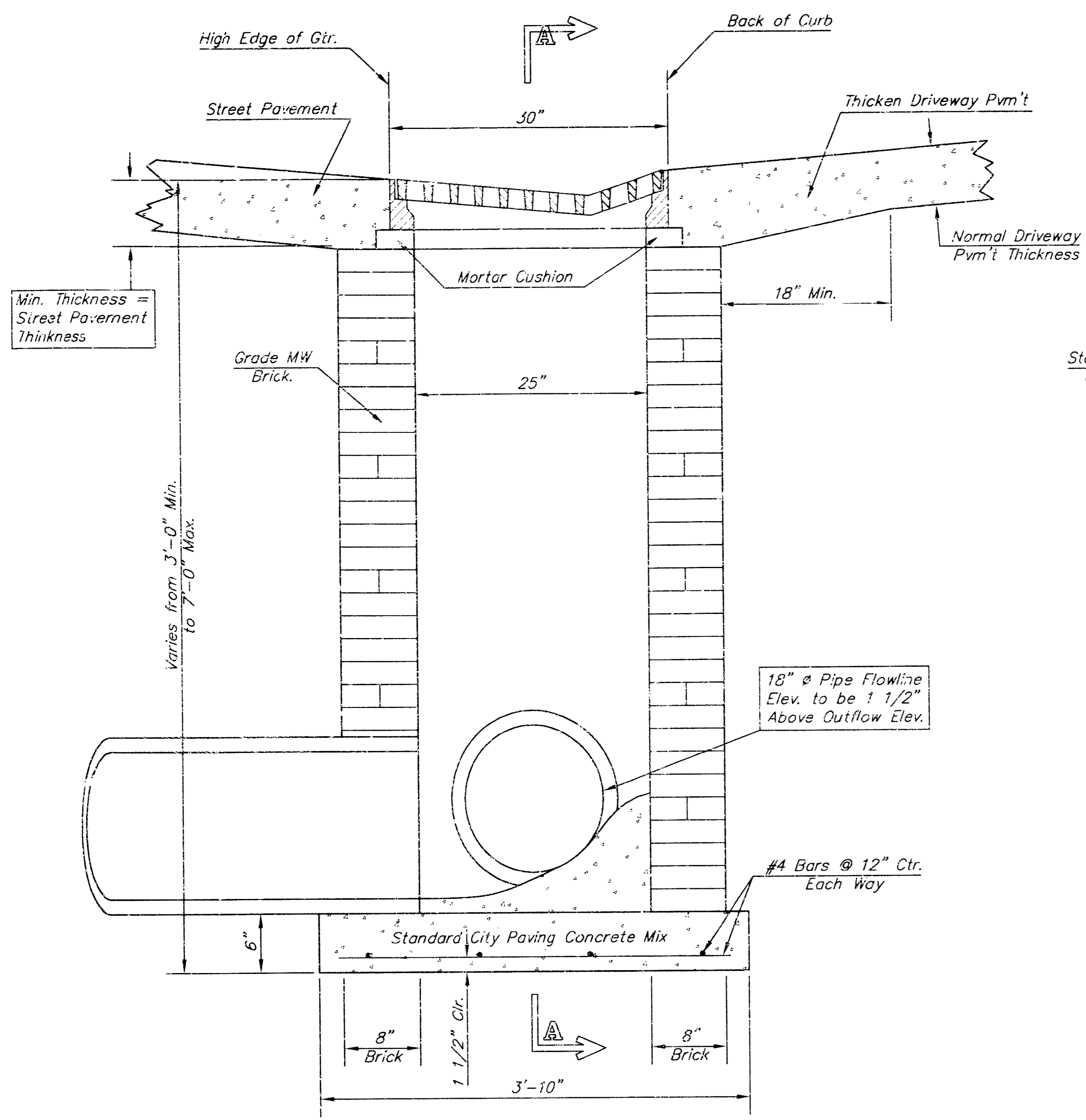


AUSTIN ENGINEERING P.A.
155 N. Ward, Suite 2000, Wichita, KS 67202
316/262-1281 Fax: 316/262-6115

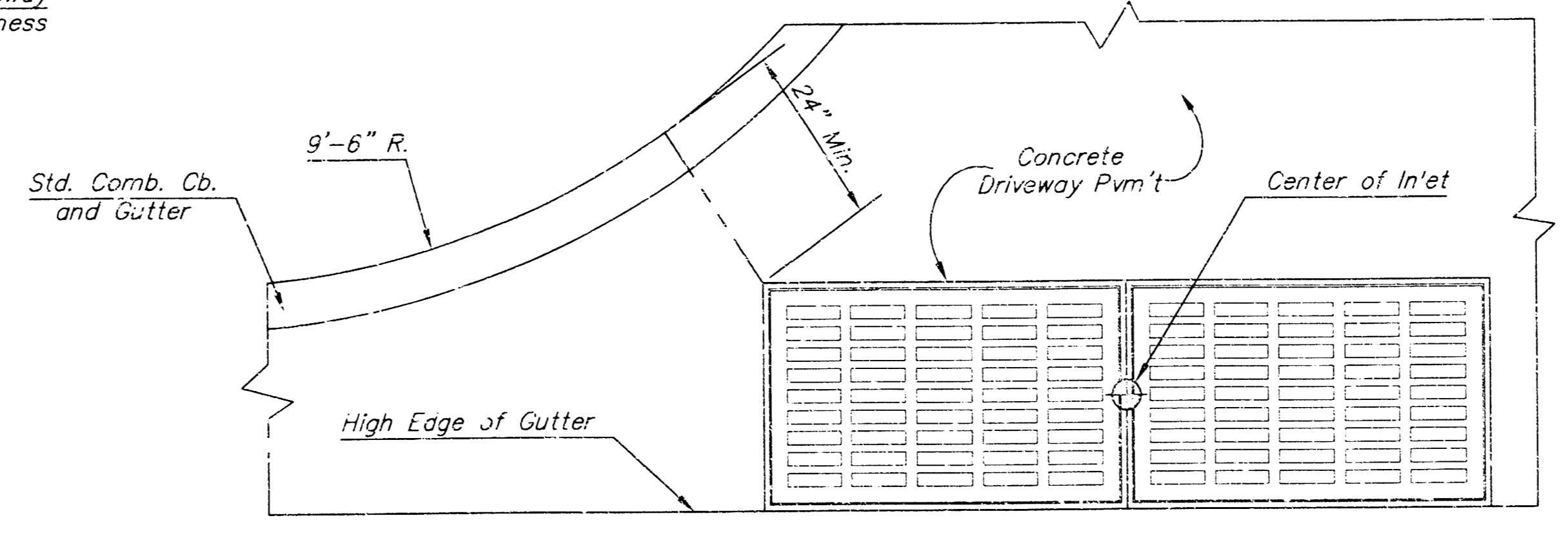
PROJECT NUMBER		1057 PPS (607881)	
DESIGN	PD	DATE	8/00
DRAWN	MPD	SCALE	"=20"
FILE	PPSWKS		

Cambridge Suites Improvements
Storm Sewer Imp.
721 W. Orme, Wichita, Kansas

SHEET
OF
1
2



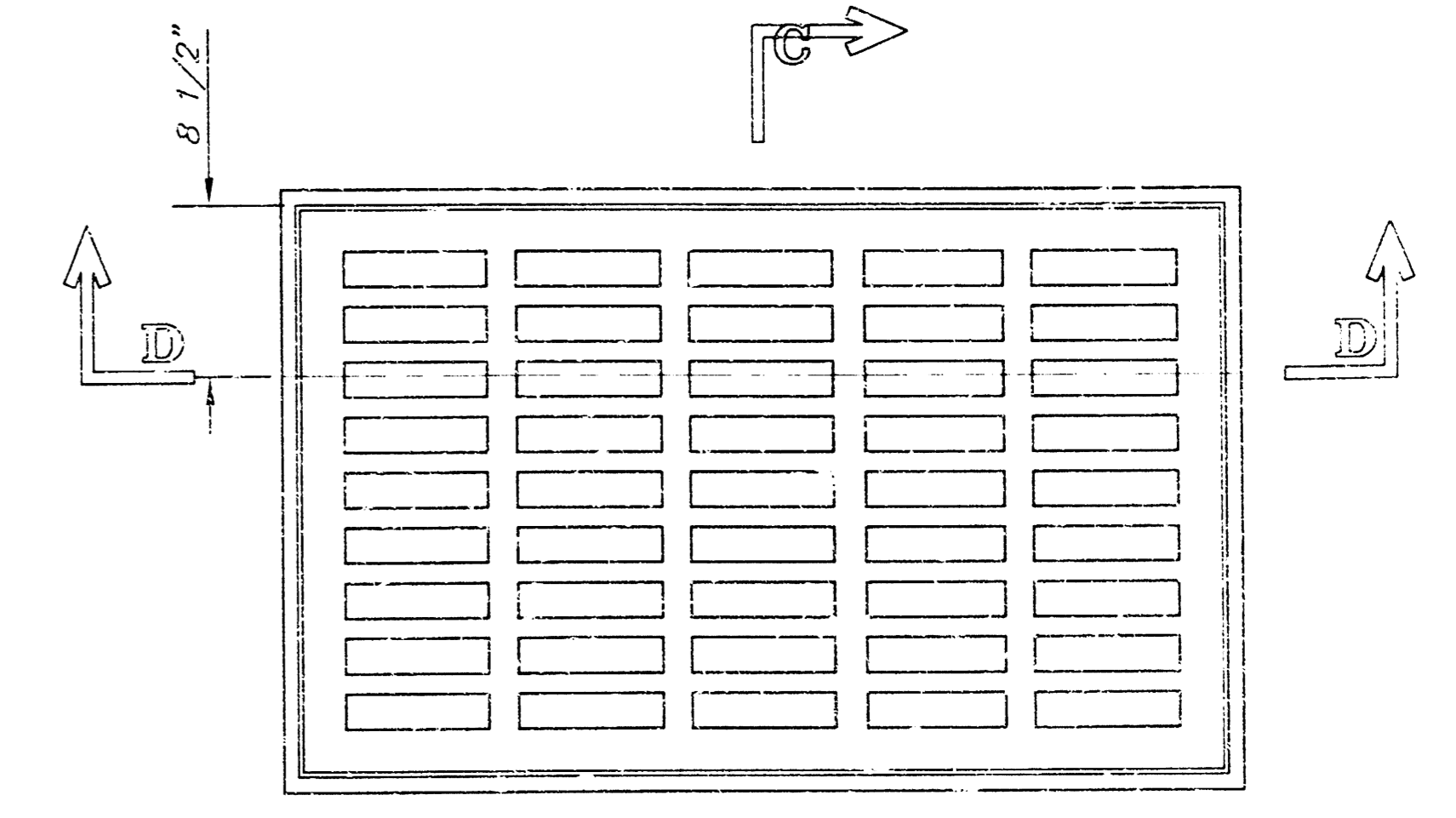
SECTION B-B



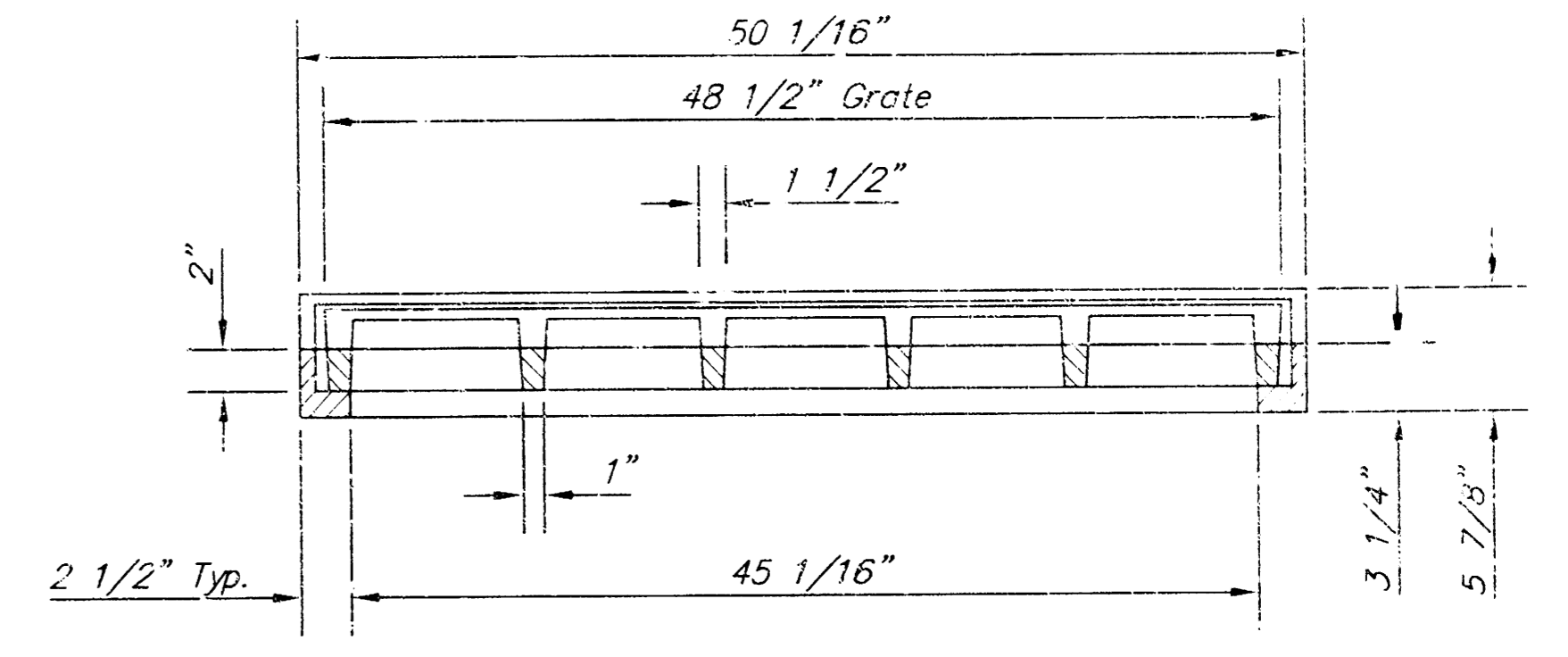
PLAN

GENERAL NOTES

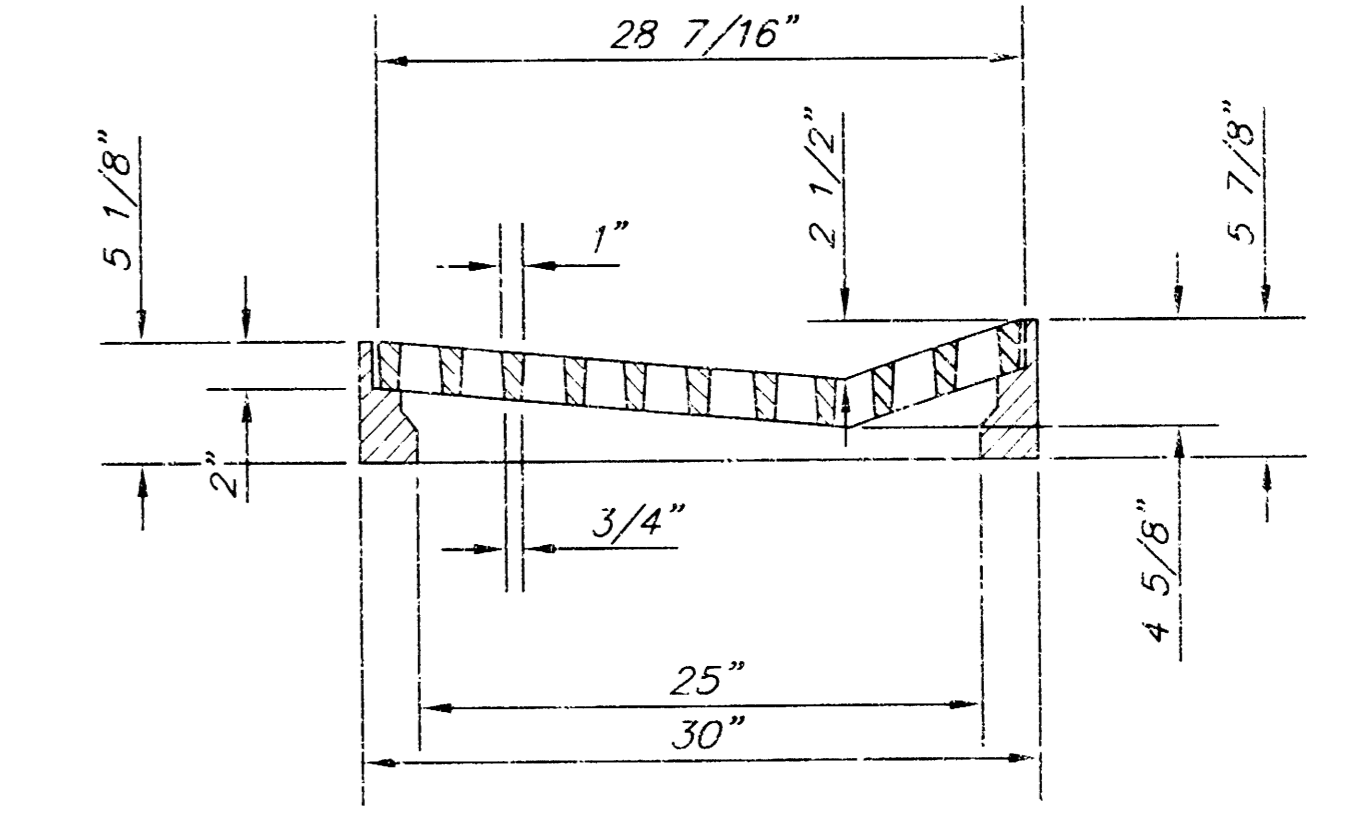
1. Grate frames to be installed on thin mortar cushion to insure full support along brick walls. Concrete used for inlet construction shall be concrete pavement mix.
2. Inlet invert shall be shaped with 8 sack sand mix concrete to create flow channels and to increase hydraulic efficiency such that the inlet will be self cleaning between all inlet and/or outlet pipes.
3. The ends of all pipes installed in inlets shall be cut off flush with the inside face of the inlet wall.
4. Inlet Frames and Grates to be two (2) Deeter #2095 or approved equal.



PLAN

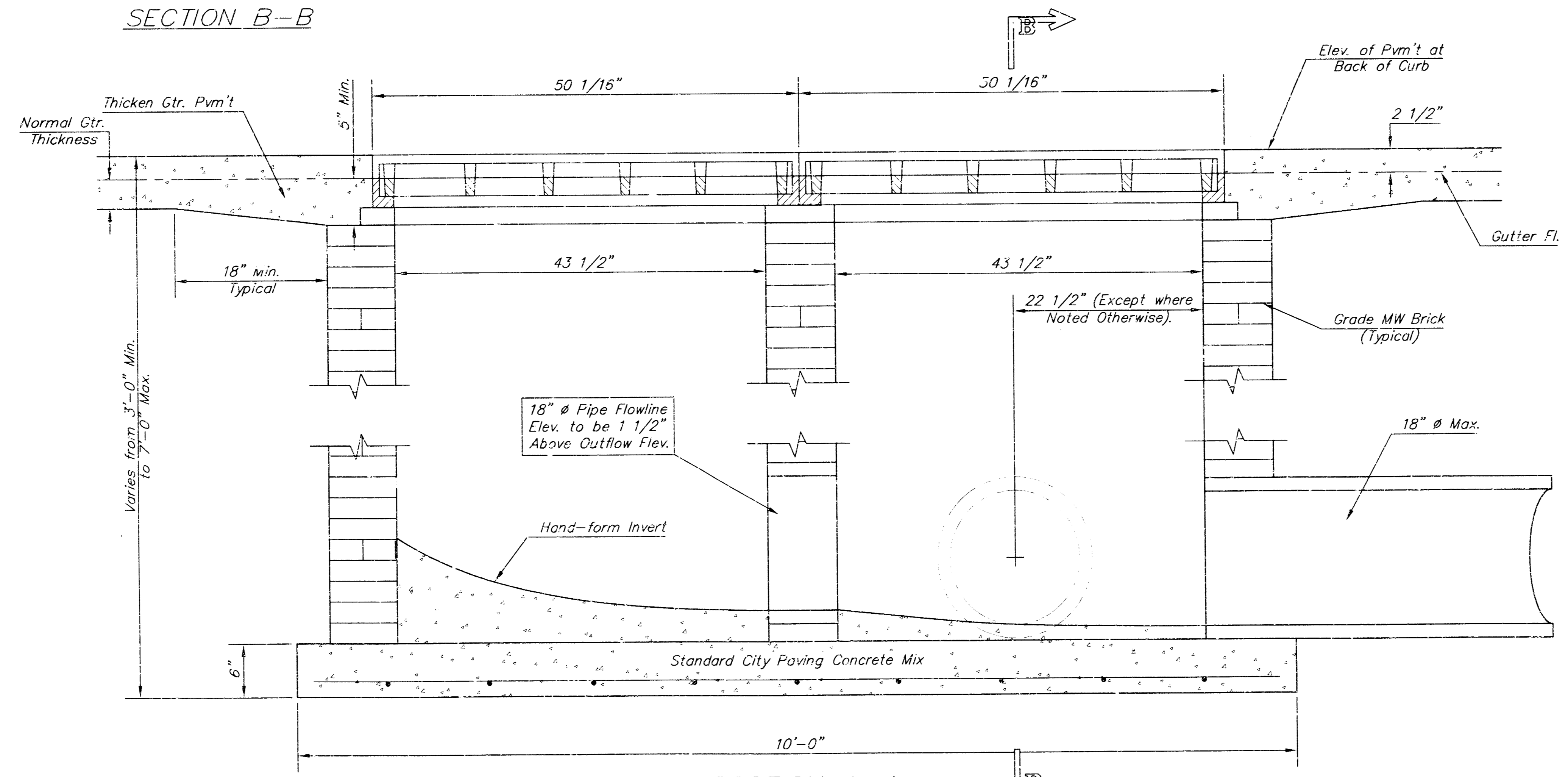


SECTION D-D



SECTION C-C

DEETER #2095 FRAME & GRATE
TOTAL WEIGHT: 705 lbs.
(2 Each Required)



SECTION A-A

<p>THE CITY OF WICHITA</p> <p>CITY ENGINEER'S OFFICE CITY HALL - SEVENTH FLOOR 455 NORTH MAIN STREET WICHITA, KANSAS 67202 (316) 268-2501 (316) 268-4114 FAX</p>	<p>DRIVEWAY GRADED INLET DOUBLE</p>	
	<p>M. E. LINDEBAK P.E. - CITY ENGINEER</p>	
	<p>PROJECT NUMBER XXX-XXXXX</p>	<p>INDEX CODE XXXXXX</p>
	<p>DATE MAR 96</p>	<p>SHEET 2 OF 2</p>