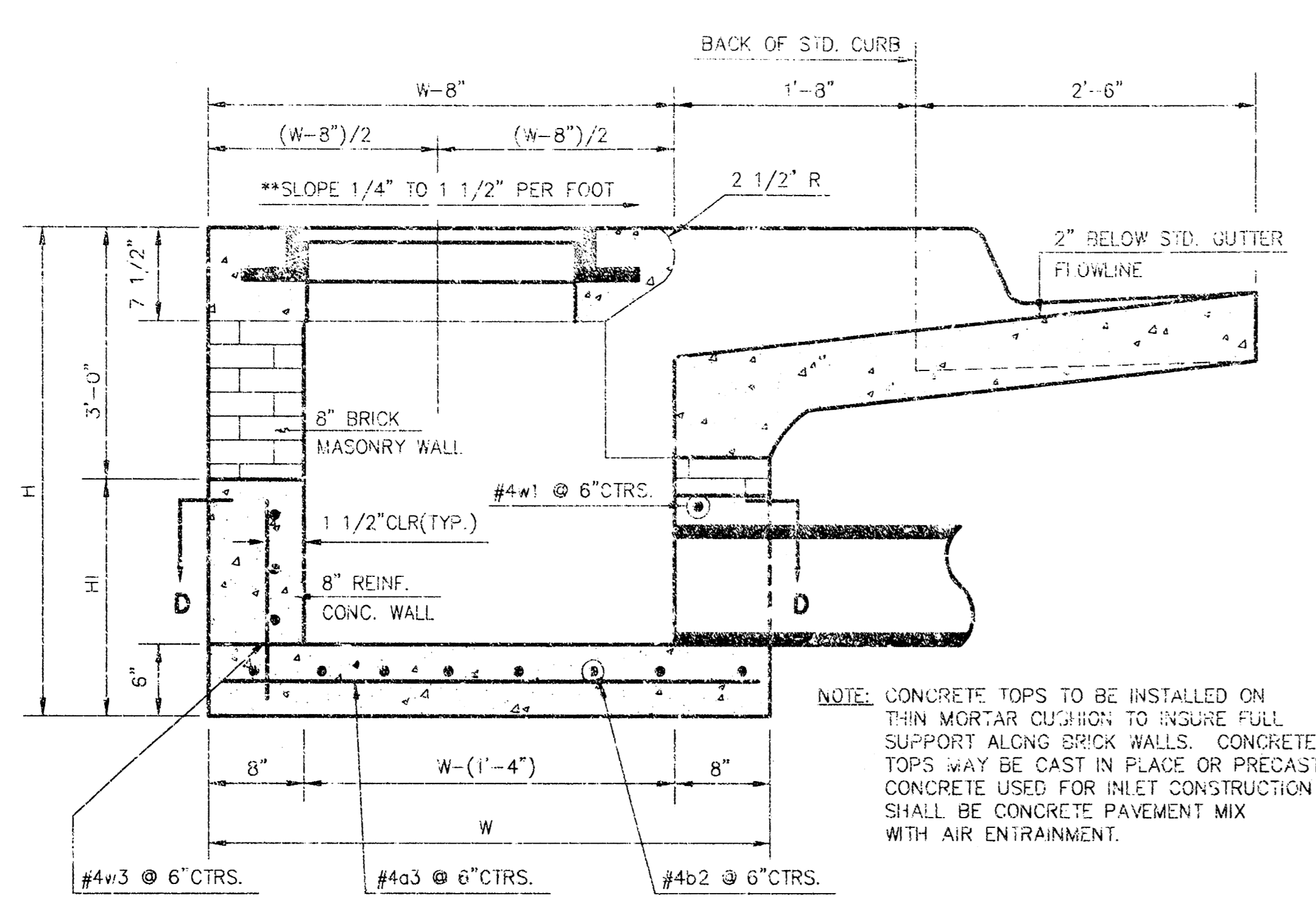
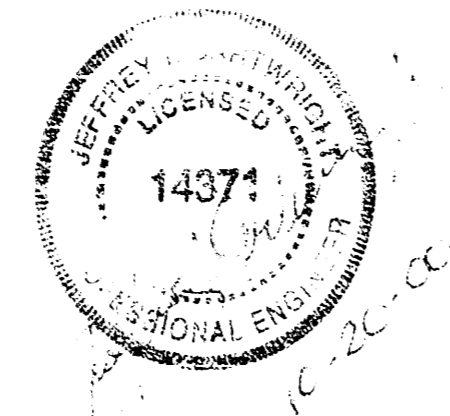


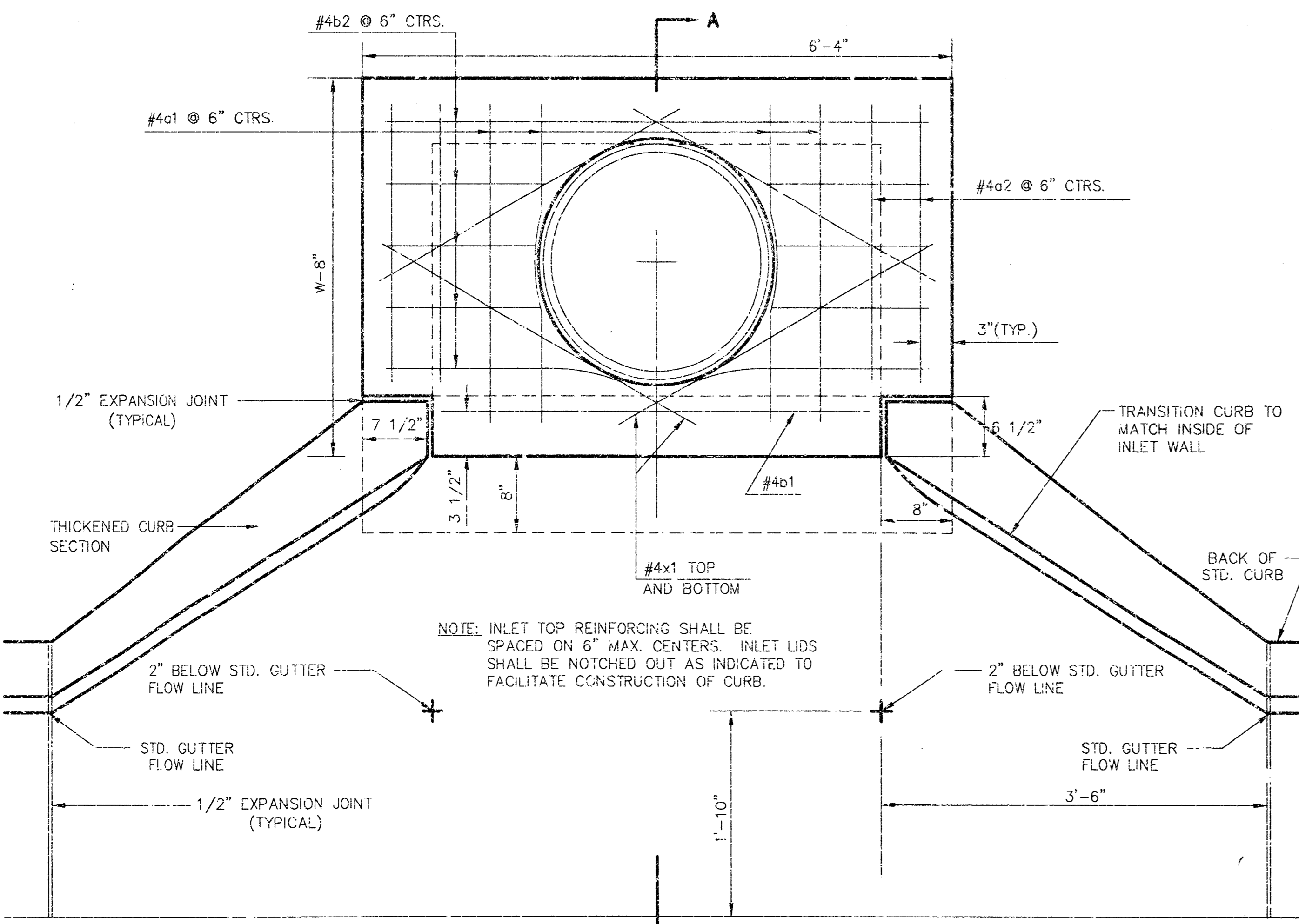
APPROVED AS NOTED  
BY CITY ENGINEER OF WICHITA  
STORMWATER SEWER *VRH 10/20/20*

NOTE TO CONTRACTOR

INSPECTION AND TESTING FOR THIS PROJECT IS TO BE PROVIDED BY A LICENSED CONSULTING ENGINEERING FIRM UNDER CONTRACT WITH THE OWNER/DEVELOPER. SAID INSPECTION TO BE IN ACCORDANCE WITH THE CITY OF WICHITA STANDARD CONSTRUCTION ENGINEERING PRACTICES AND CERTIFIED BY A LICENSED PROFESSIONAL ENGINEER. NO WORK SHALL BE PERFORMED IN DEDICATED EASEMENTS OR THE PUBLIC RIGHT-OF-WAY BY THE CONTRACTOR WITHOUT SUCH INSPECTION WORK SHALL ANY WORK BE COMMENCED IN DEDICATED EASEMENTS OR PUBLIC RIGHT-OF-WAY WITHOUT WRITTEN AUTHORIZATION BY THE CITY ENGINEER.



SECTION A-A



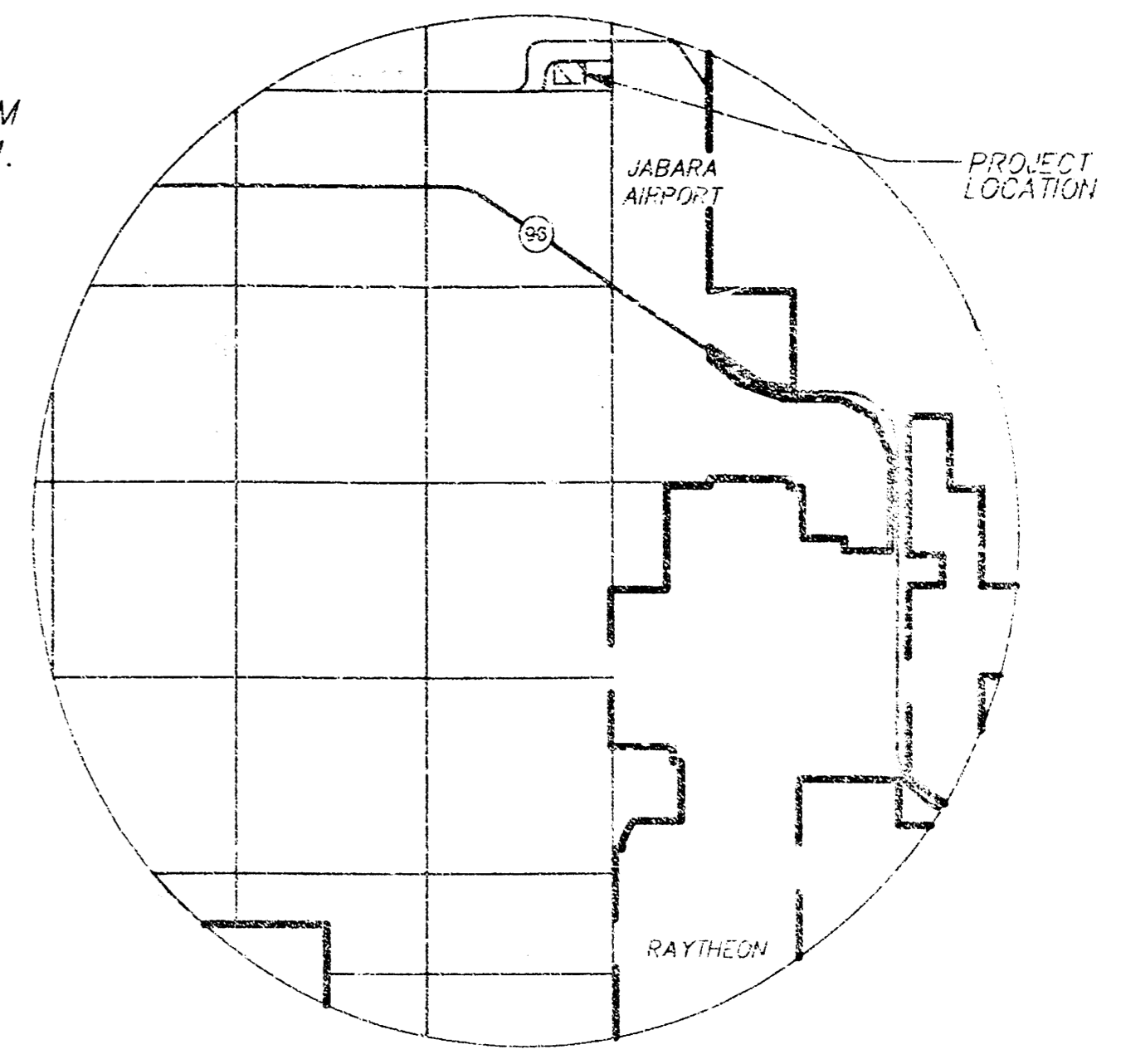
PLAN

STA. 0+00, LINE 1  
EXIST. TYPE 1A CURB INLET  
INLET TOP=228.96

STA. 0+97.26, LINE 1  
CONST. TYPE 1A CURB INLET  
INLET TOP=226.00

BENCHMARK

BM #1 "+\"/>

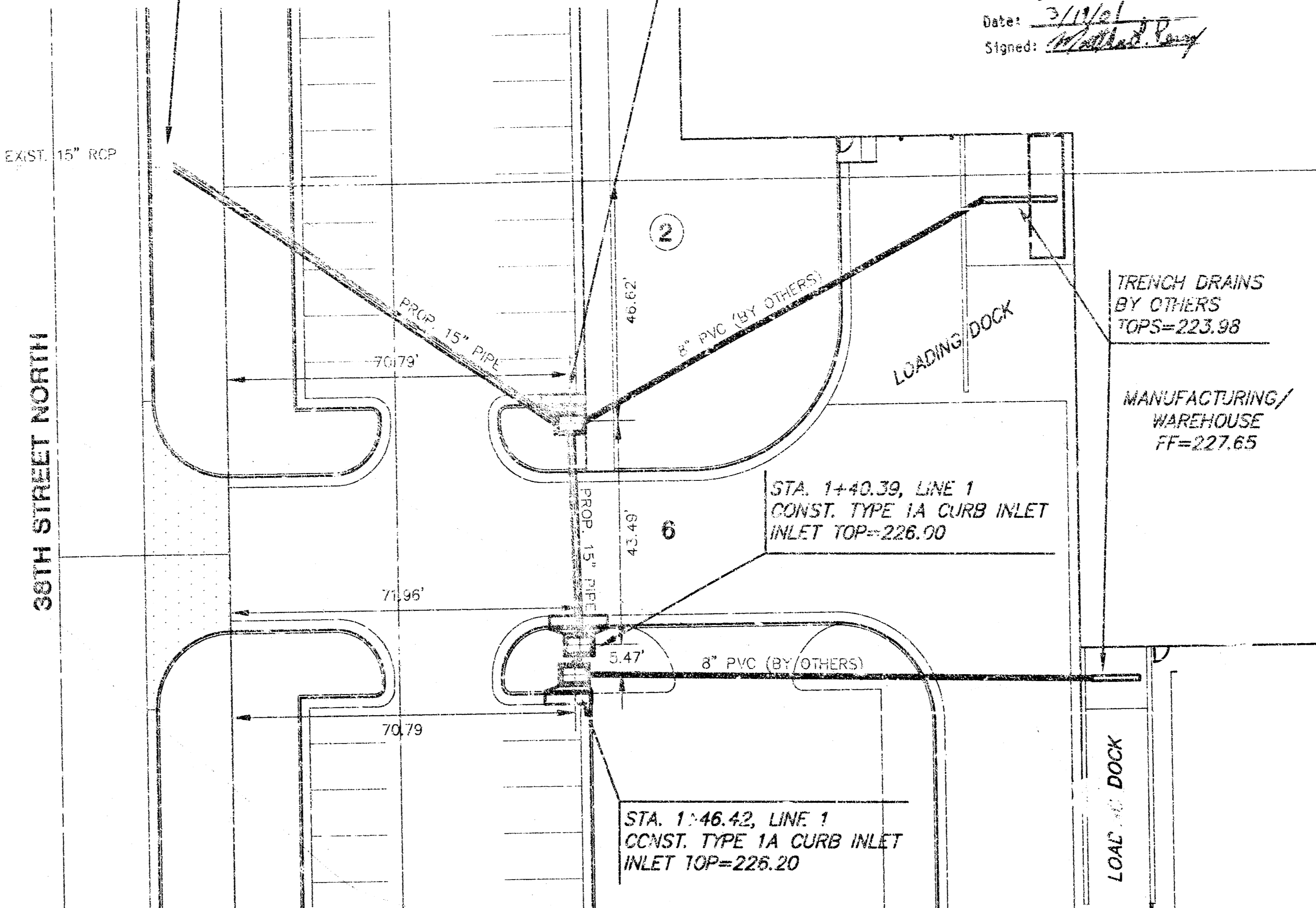


GENERAL NOTES

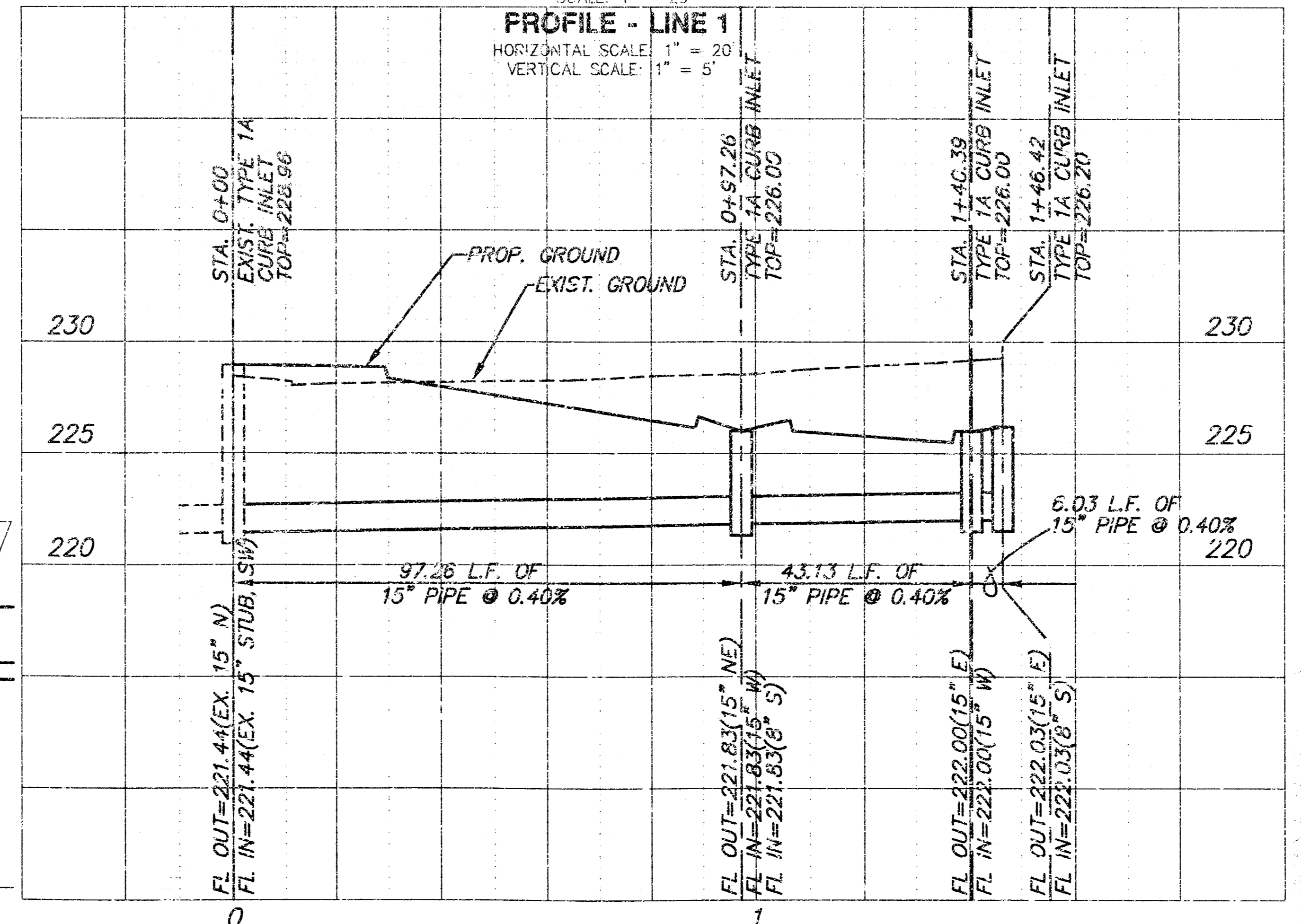
1. THE CONTRACTOR SHALL BE RESPONSIBLE FOR PRESERVING PROPERTY IRONS. THE CONTRACTOR WILL BE REQUIRED TO RE-ESTABLISH ANY PROPERTY IRONS WHICH ARE DAMAGED OR DESTROYED BY THEIR CONSTRUCTION OPERATIONS. SUCH IRONS SHALL BE RE-ESTABLISHED BY A LICENSED LAND SURVEYOR IN ACCORDANCE WITH STATE LAWS.
2. EXISTING UTILITIES AND THEIR LOCATIONS, AS SHOWN ON THE PLANS REPRESENT THE BEST INFORMATION OBTAINABLE FOR DESIGN. LOCATION INFORMATION HAS BEEN OBTAINED FROM THE VARIOUS UTILITY COMPANIES AND IS EITHER FROM COMPANY RECORD DRAWINGS OR COMPANY PROVIDED FIELD LOCATIONS. THE PLAN LOCATIONS SHOWN ARE NOT GUARANTEED. ADDITIONAL EXISTING UTILITIES MAY ALSO BE ENCOUNTERED.
3. CONTRACTOR WILL BE REQUIRED TO PROVIDE A MINIMUM ADVANCE NOTICE OF FORTY-EIGHT (48) HOURS TO UTILITY COMPANIES PRIOR TO STARTING ANY EXCAVATION AS FOLLOWS:

KANSAS ONE-CALL 1-800-344-7733  
or 687-2470 (LOCAL WICHITA)  
SOUTHWESTERN BELL TELEPHONE COMPANY 1-571-2115  
CABLEVISION 262-4270 or 263-2681  
KANSAS GAS & ELECTRIC 264-1141  
CITY OF WICHITA WATER & SEWER 268-4071  
ARLKA GAS COMPANY 942 8350 OR 263-3151

4. RUBBLE FROM THE REMOVAL OF MISCELLANEOUS STRUCTURES AND EXCESS EXCAVATION WHICH IS TO BE WASTED SHALL BE DISPOSED OF ON SITES TO BE PROVIDED BY THE CONTRACTOR. THESE SITES SHALL BE APPROVED BY THE ENGINEER AS TO SUITABILITY, APPEARANCE AND SITE LOCATION. LOCATIONS THAT, IN THE OPINION OF THE ENGINEER, WILL LEAVE AN UNSIGHTLY APPEARANCE WILL NOT BE APPROVED. ALL DISPOSAL SITES MUST BE APPROVED BY THE KANSAS DEPARTMENT OF HEALTH AND ENVIRONMENT. MATERIAL EITHER STOCKPILED OR DISPOSED OF IN A FLOOD PLAIN WOULD REQUIRE A KANSAS STATE BOARD OF AGRICULTURE PERMIT. ANY MATERIAL DUMPED IN WATERS OF THE UNITED STATES OR WETLANDS IS SUBJECT TO U.S. CORPS OF ENGINEERS PERMITTING REGULATIONS. ANY MATERIAL BURIED OR STOCKPILED BEYOND APPROVED CONSTRUCTION LIMITS WOULD REQUIRE ADDITIONAL ARCHAEOLOGICAL INVESTIGATIONS UNLESS BURIED IN A PREVIOUSLY APPROVED BORROW LOCATION.
5. ALL DISTURBED AREAS TO BE SEEDED WITH A RYE GRASS AT A RATE OF 200 LBS./ACRE WITHIN 10 DAYS OF CONSTRUCTION. COST SHALL BE CONSIDERED SUBSIDIARY TO PROJECT.
6. CONTRACTOR SHALL PROVIDE TEMPORARY SEDIMENT CONTROL AT ALL INLETS. SUCH CONTROL SHALL BE MAINTAINED UNTIL AND UPON TERMINATION OF SEEDING. ACCEPTABLE MEANS OF CONTROL SHALL BE APPROVED BY ENGINEER.
7. CONTRACTOR SHALL HAVE THE OPTION OF USING EITHER ROP OR HDPE PIPE FOR INSTALLATION OF 15\"/>



PROFILE - LINE 1



**MKEC**  
ENGINEERING CONSULTANTS  
411 N. WEBB ROAD  
WICHITA, KS. 67208  
316-684-8600

**AIRTECHNICS, INC.**  
LOT 6&7, BLOCK 2, INDUSTRIAL AIR CENTER  
PROJECT NAME  
**PRIVATE STORM WATER SEWER**  
1058pps (607861)  
SHEET TITLE

DESIGN BY: *JTC*  
DRAWN BY: *GJR*  
CHECKED BY: *JTC*

DATE: **OCTOBER 2000**  
DRAWING NAME: **00235\_D1**  
SHEET/OF: **1 / 1**