

# STORM SEWER IMPROVEMENTS TO SERVE LOT 2, BLOCK 3, SOUTH BROADWAY INDUSTRIAL PARK

Project Number  
**1060 PPS (607861)**

**CITY OF WICHITA, KANSAS**

Michael E. Lindebak, P. E., City Engineer

## GENERAL NOTES

- Contractor will be required to provide notice to utility companies a minimum of twenty-four (24) hours prior to any excavation, as follows:

Kansas One-Call 687-2470

The Contractor must notify the following in case of an emergency:

Cablevision	262-4270
or	263-2061
K.P.L. Gas Service Company	383-8650
Kansas Gas & Electric Company	383-8600
Peoples Natural Gas Gas	942-8811
or	1800-307-0357
Southwestern Bell Telephone Company	1-571-2611
City of Wichita Water Department	268-4908
City of Wichita Sewer Department	268-4071
Kansas Gas Service	832-3168
or	832-3167

- Exist. utilities and their locations, as shown on the plans, represent the best information obtainable for design. Location information has been obtained from the various utility companies and is either from company record drawings or company-provided field locations. The Contractor will be required to work around existing utilities which do not conflict with proposed construction.

- The Contractor to verify utility locations prior to construction of this project.

- Utility service and installation shall be coordinated with the respective utility owners. Contacts are:

Kansas Gas Service	Jim Stoltz	832-3122
K.G.E.	Russ Chitwood	261-6251
Wichita Water	Bill Perkins	268-4555
	Paul Bryant	268-4555
Southwestern Bell	Jim Tobin	268-2759

- All areas disturbed by construction shall be seeded with rye Rebel II Fescue grass at a rate of 350 lbs./acre immediately following construction in that area.

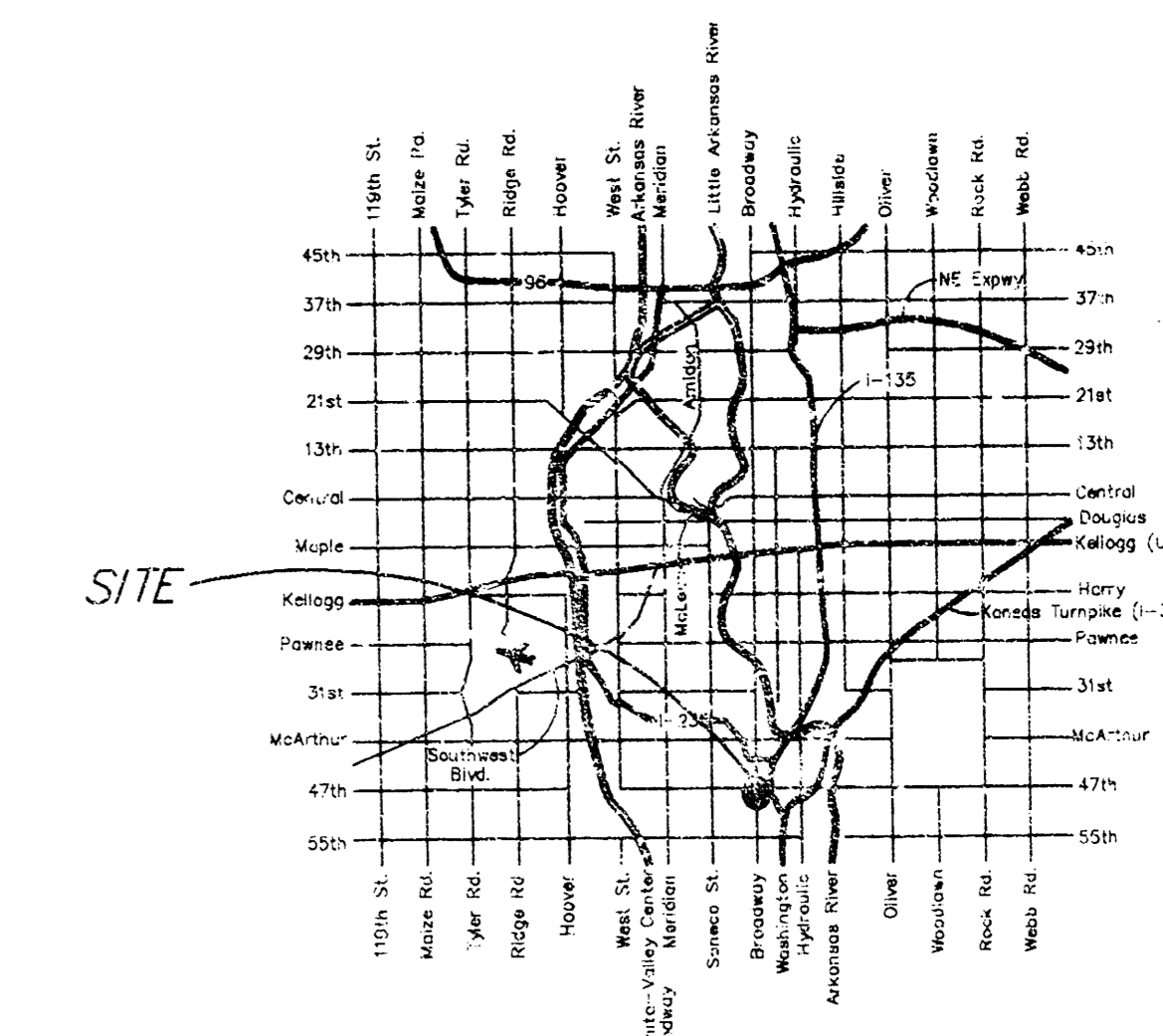
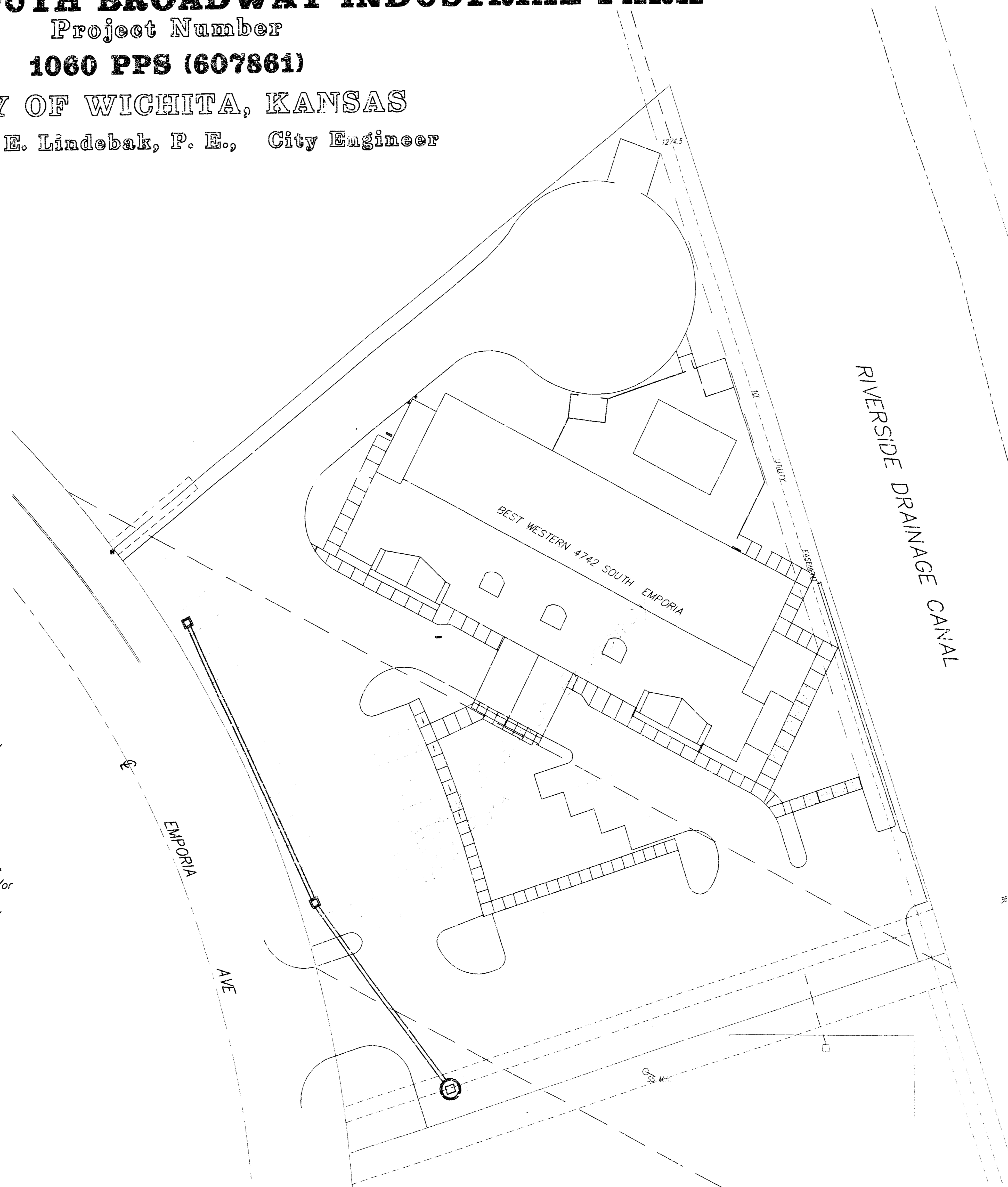
- Traffic affected by the construction of this project shall be handled in accordance with the latest edition of the Manual on Uniform Traffic Control Devices.

- All lawn/turf areas disturbed by construction of proposed improvements shall be restored with the same grass/sod as existing. Restoration of disturbed areas shall include, but not be limited to, top soil preparation, seeding, mulch and/or reseeding. All seeding/sodding work shall be in accordance with the City of Wichita standard specifications and the City of Wichita administrative regulation No. AR78 which governs cleanup and replacement following construction. All costs for this work shall be subsidiary to the lump sum price bid for "Site Restoration."

APPROVED AS NOTED BY CITY ENGINEER OF WICHITA

STORM SEWERS VRH 11/17/00

Inspection and testing for this project are to be provided by a Licensed Consulting Engineering Firm under contract with the Owner/Developer. Said inspection is to be in accordance with the City of Wichita standard construction engineering practices and certified by a Licensed Professional Engineer. No work shall be performed in dedicated easements or public right-of-way by the Contractor without such inspection nor shall work be commenced without written authorization by the City Engineer. All construction and materials shall comply with the City of Wichita Specifications and Standards (on file and available in the City Engineer's Office).



## LOCATION MAP

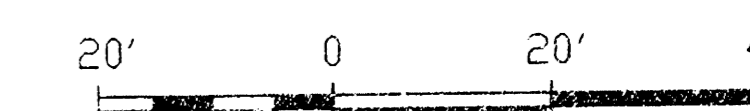
## INDEX

- Cover
- Plan and Profile
- Detail

BOOKED  
4-19-01  
1-26  
D-507



SCALE



## BENCHMARK:

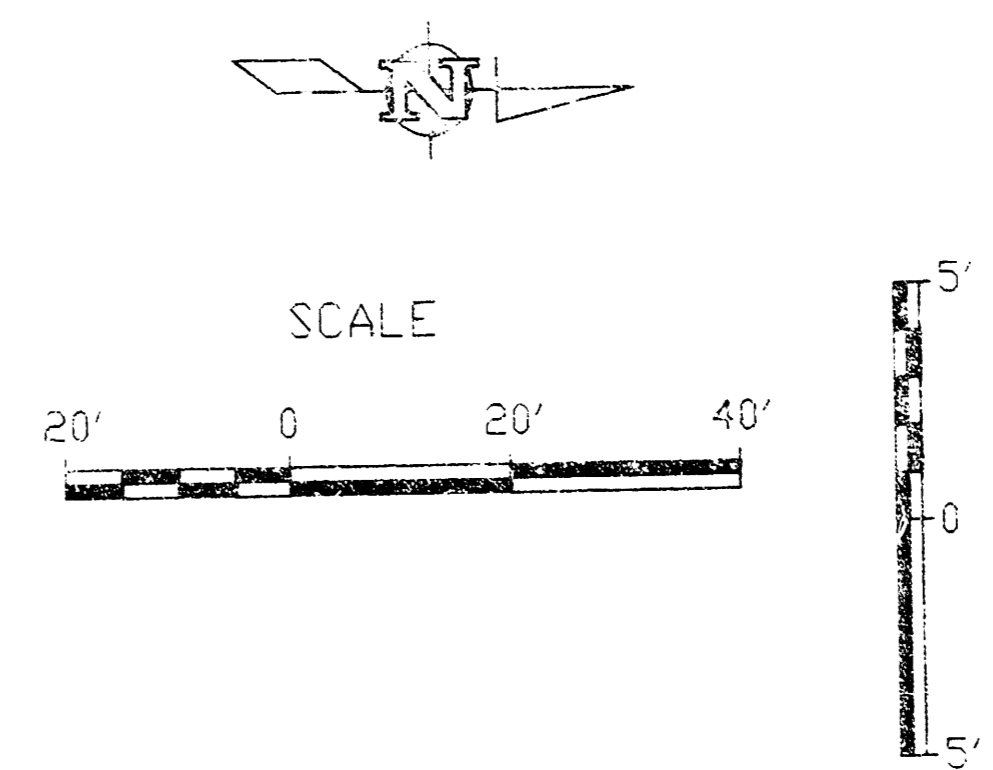
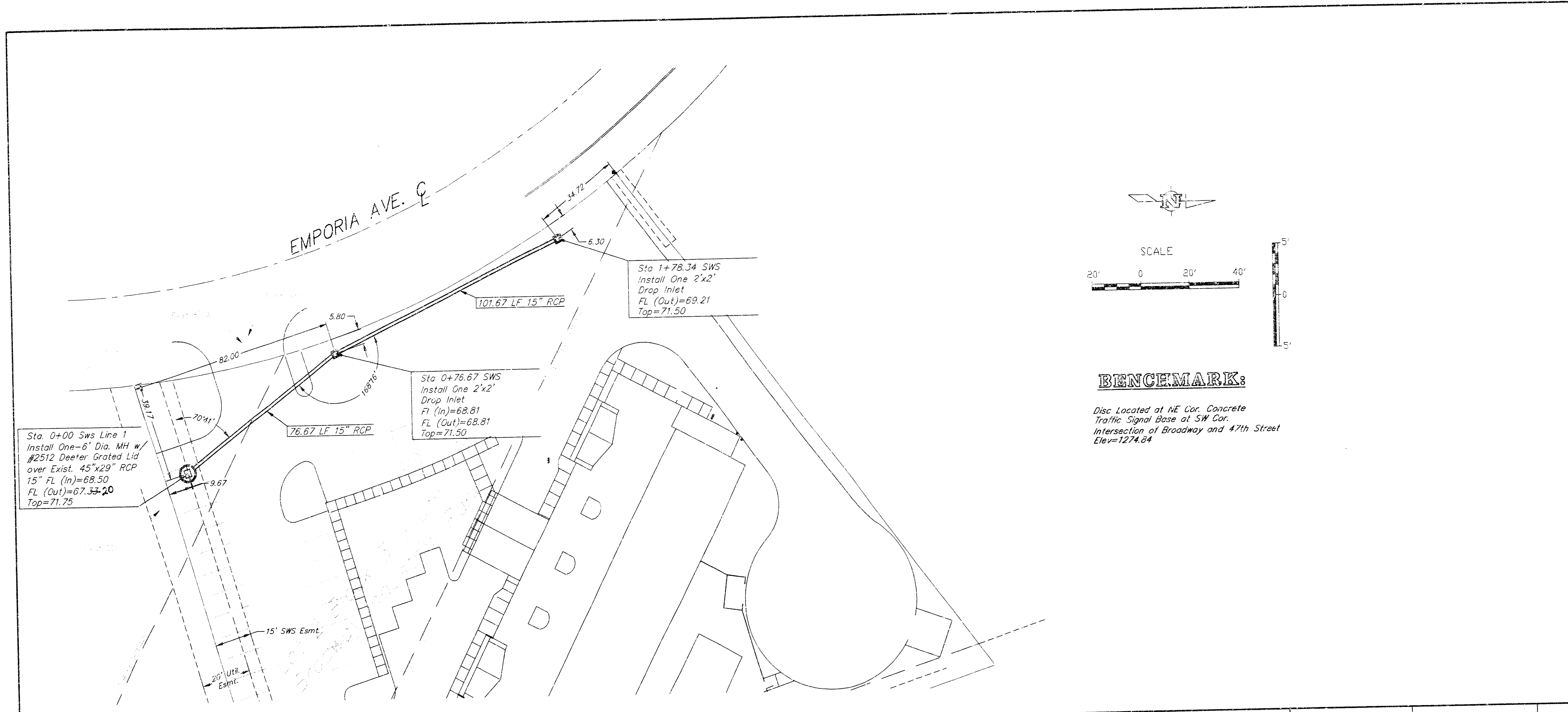
Disc Located at NE Cor. Concrete Traffic Signal Base at SW Cor. Intersection of Broadway and 47th Street Elev=1274.84 City Datum

AS-BUILT

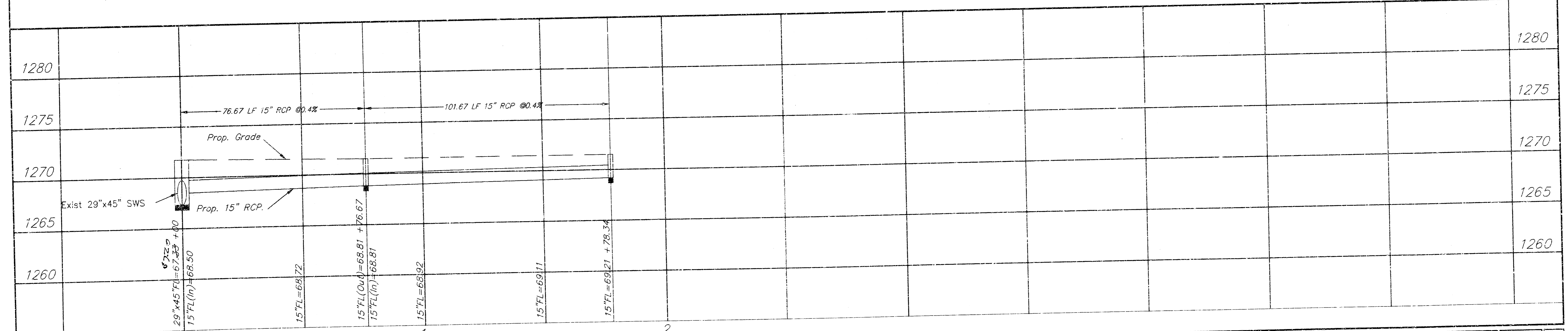
Date: 11/17/00  
Signed: \_\_\_\_\_

FILE 00340 SHST

**ENGINEERING SERVICES**  
P.A.  
224 S. Louis, Suite 210 Wichita, KS 67211  
316-262-1281 fax 316-262-6773

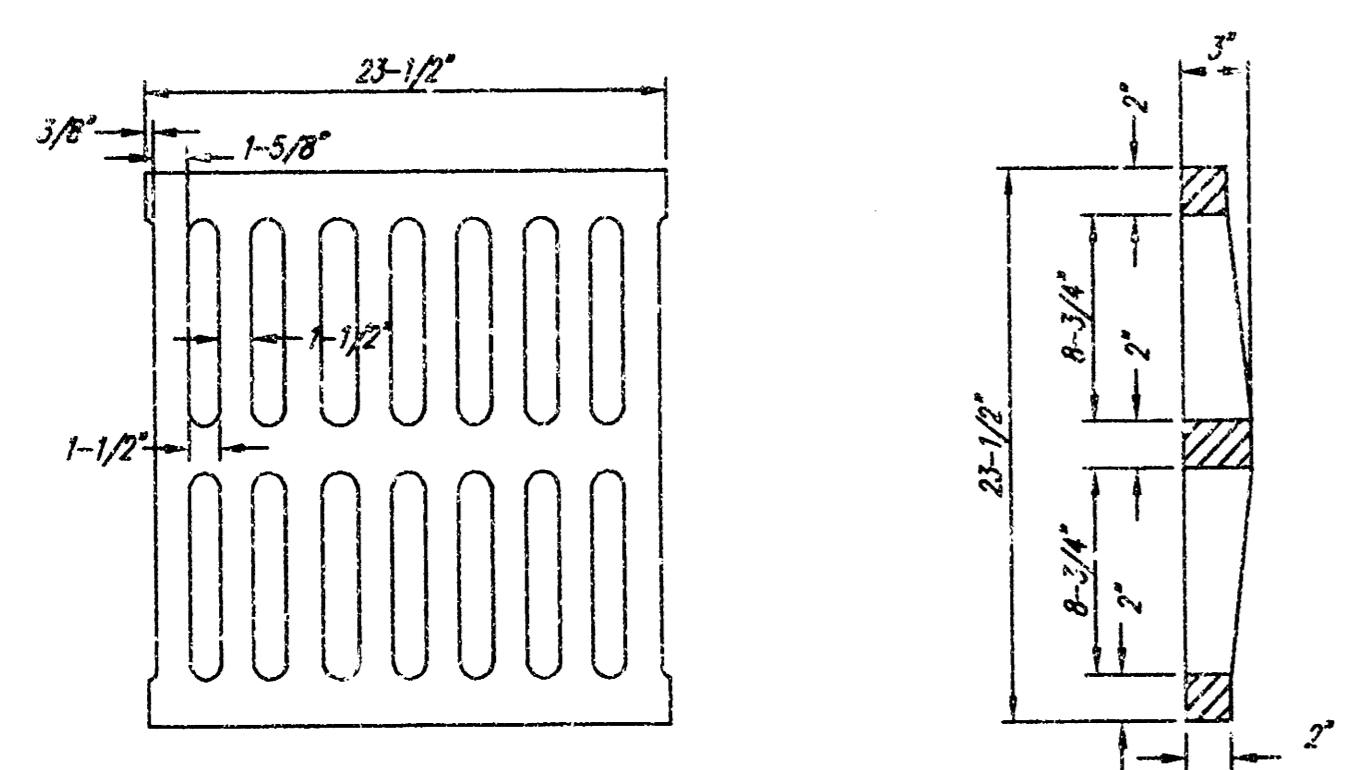
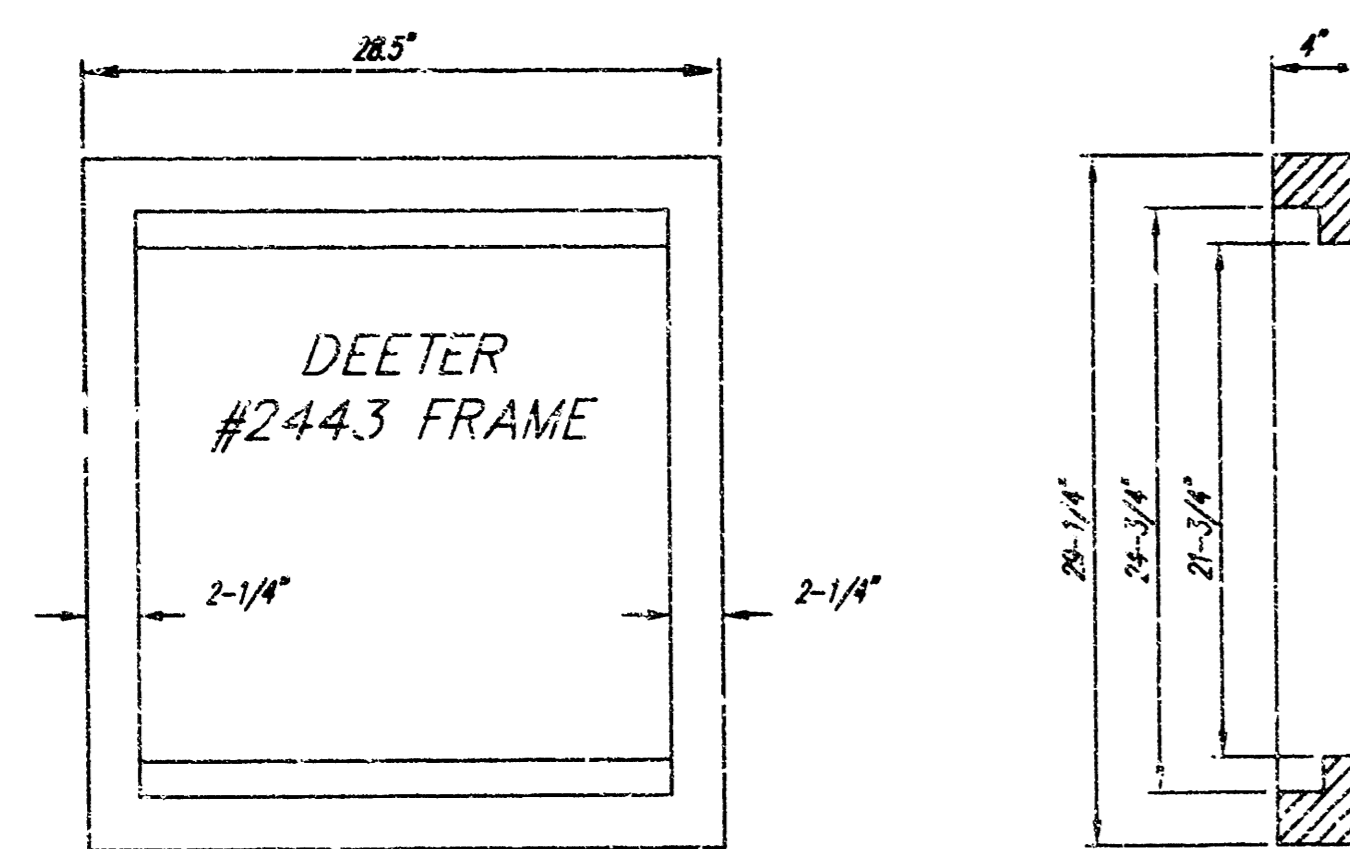


**BENCHMARK:**  
Disc Located at NE Cor. Concrete  
Traffic Signal Base at SW Cor.  
Intersection of Broadway and 47th Street  
Elev=1274.84



	PROJECT NUMBER <b>1080 PPS (807861)</b>				AM NO. 00340	Best Western Governor Inn <b>SWS Plan &amp; Profile</b> 4742 S. Emporia, Wichita, KS	SHEET <b>2</b>
	DESIGN DD	DRAWN DD	FILE SWS1	DATE 10-23-00	SCALE 1"=20'		OF <b>3</b>

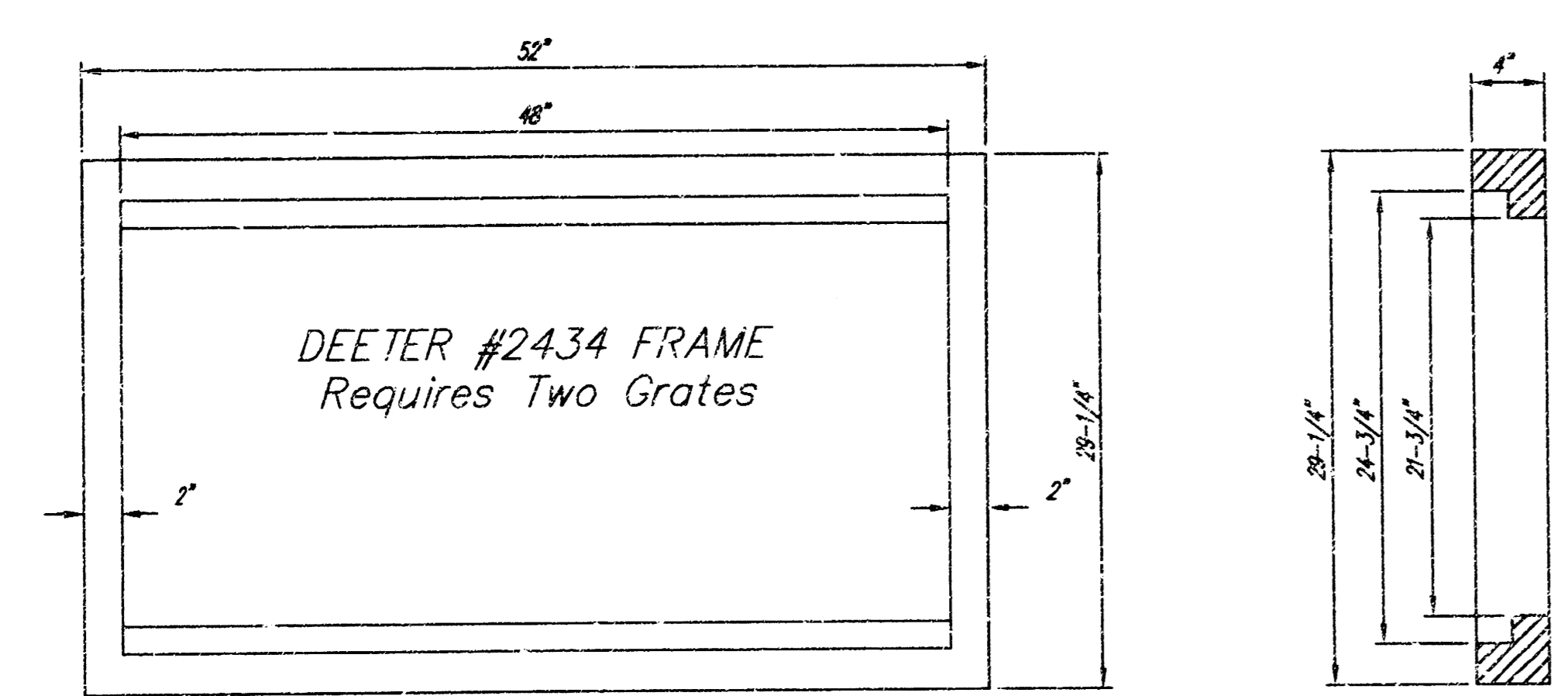
REVISED: 11/13/00



DEETER #2433 GRATE

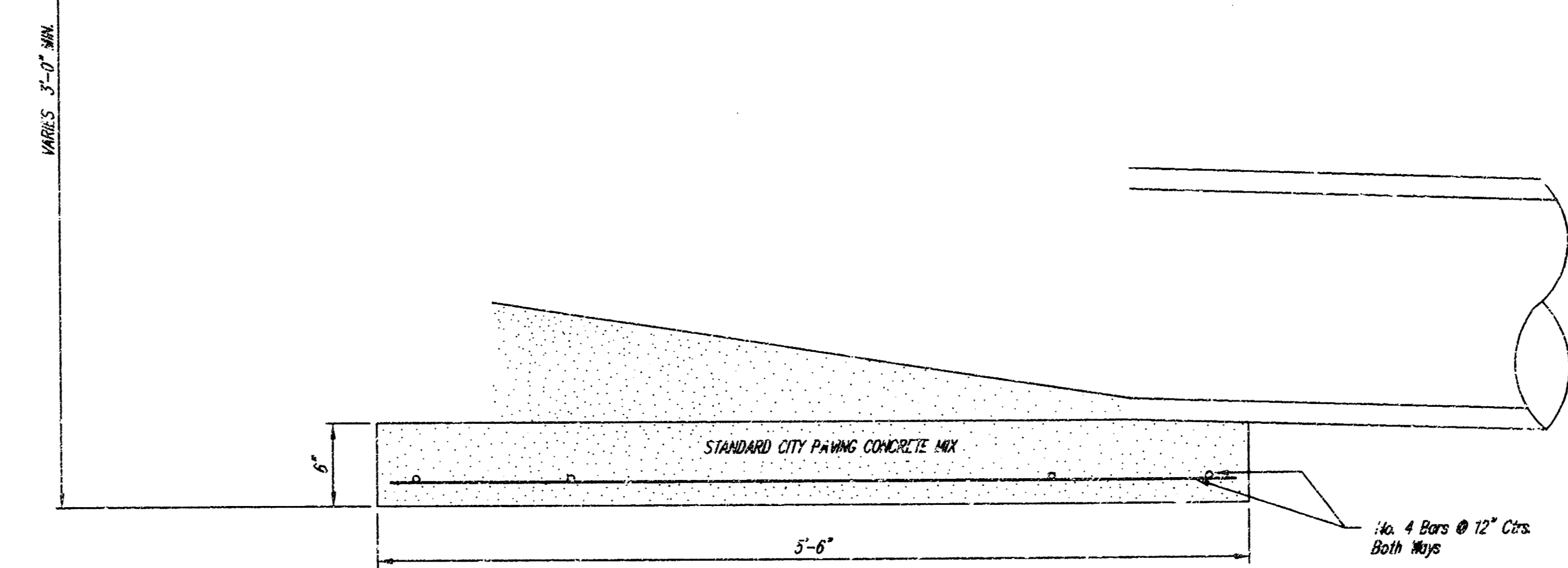
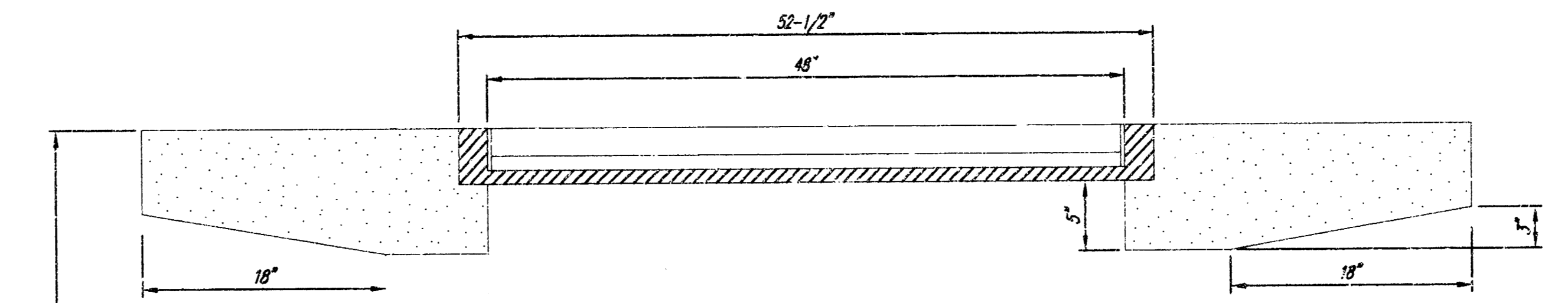
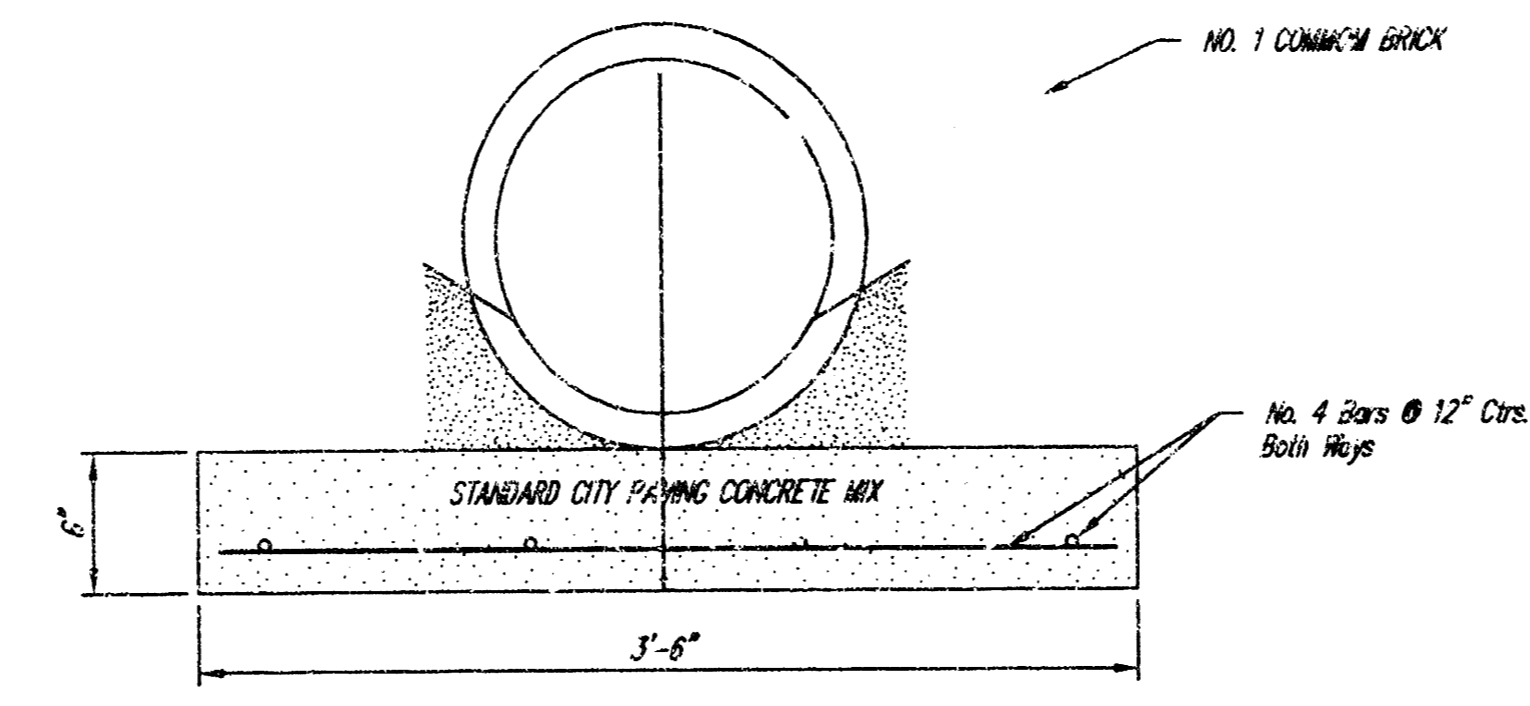
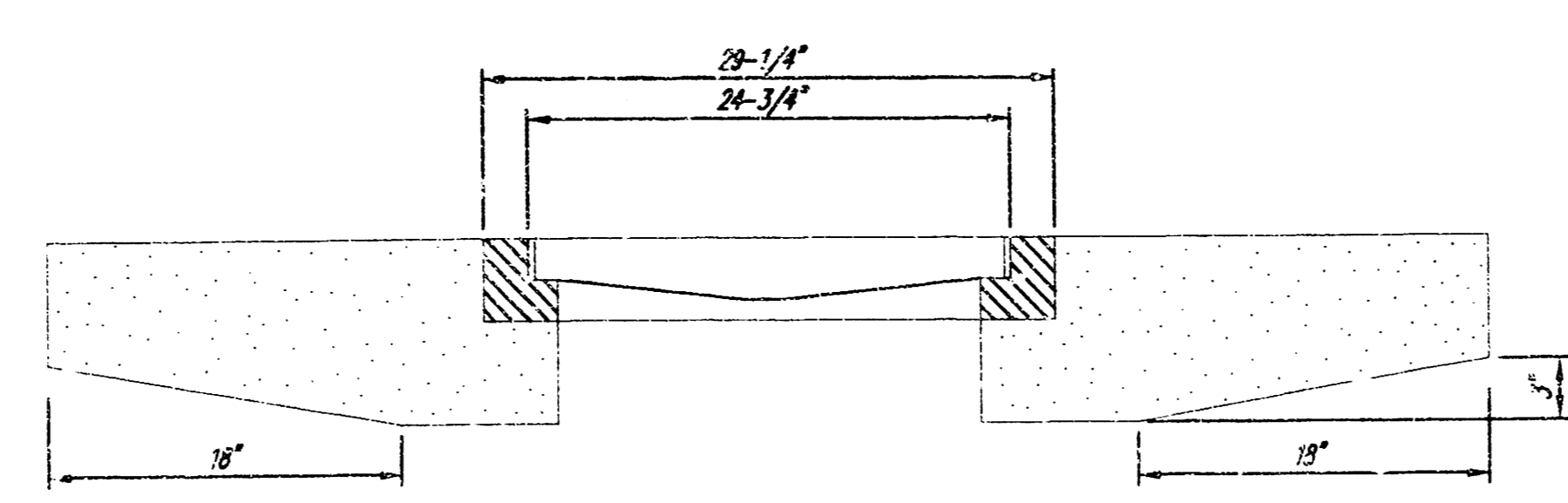
24" x 24" Frame and Grate Detail

NOTE: Grates shall be imprinted on the top surface with "CITY OF WICHITA" using letters of least 1" in height. Other marking methods may be approved by the engineer.



DEETER #2434 FRAME  
Requires Two Grates

Double 24" x 24" Frame Detail



Note: Concrete apron shall be constructed around the inlet when inlet is located in an unopened area. Where the inlet is exposed to pavement, the pavement thickness shall be equal to the inlet in 18 inches as indicated on the detail.

<p>CITY ENGINEER'S OFFICE CITY HALL - SEVENTH FLOOR 625 NORTH MAIN STREET WICHITA, KANSAS 67202 (316) 268-5001 (316) 268-4114 FAX</p>	<p><b>DROP INLET</b> 2' X 2' / 2' X 4'</p>		
	<p>M. E. LINDEBAK P.E. - CITY ENGINEER</p>		
	<p>PROJECT NUMBER 1060 PPS 607861</p>	<p>INDEX CODE</p>	
	<p>DATE MAR 96</p>	<p>SHEET 3 OF 3</p>	