

STORM WATER SEWER TO SERVE 127TH RETAIL ADDITION

Lots 1-6

Private Project Number
1062 PPS (607861)

CITY OF WICHITA, KANSAS
Michael E. Lindebak, P.E. City Engineer
February 2001

LEGAL DESCRIPTION:

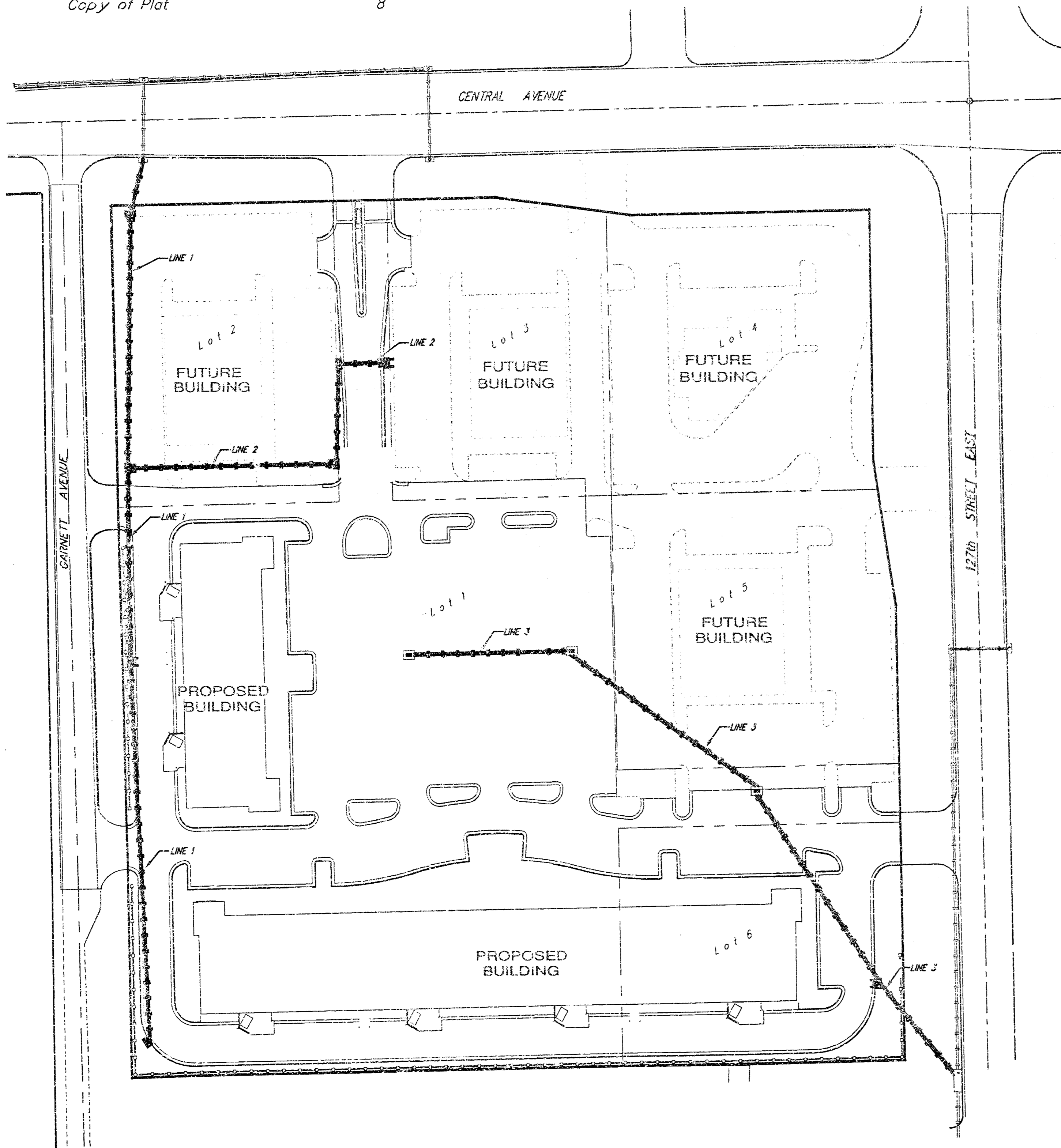
Lots 1-6, 127th Retail Addition, Wichita, Sedgwick County, Kansas.

BENCHMARK:

"B" Located in traffic signal box base. Traffic signal located at the Northeast corner of subject property adjacent to the intersection of Central Ave. & 127th Street East.
Elevation: 182.18 City Datum

Index

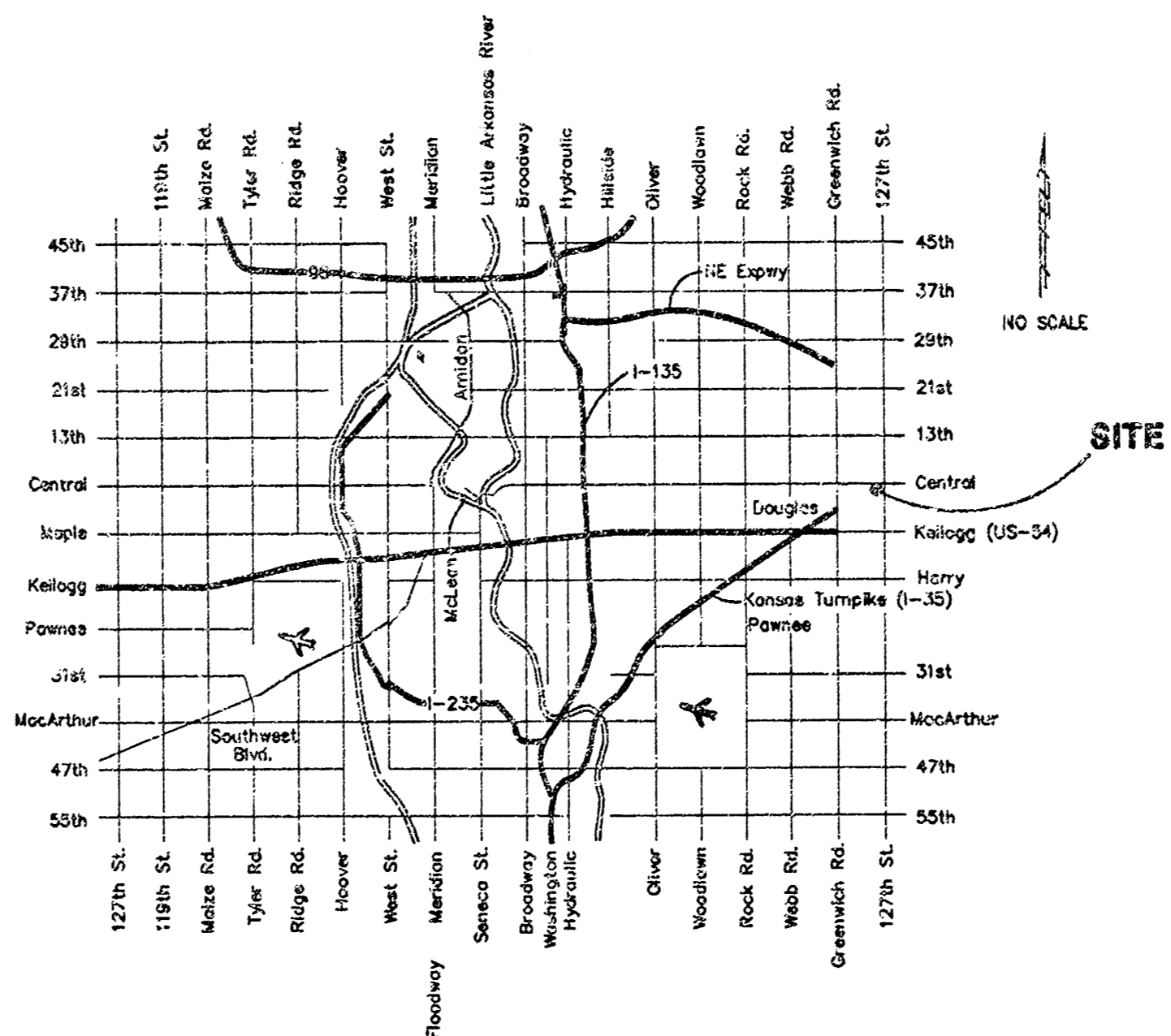
Title Sheet	1
Plan/Profile Sheet	2-4
Detail Sheets	5-7
Copy of Plat	8



SCALE:
1" = 60'

General Notes

- Contractor will be required to provide notice to utility companies a minimum of forty-eight (48) hours prior to any excavation, as follows:
Kansas One-Call 687-2470
The Contractor must notify the following in case of an emergency:
Cox Communications 262-4270
Kansas Gas Service Company 383-8600
Kansas Gas & Electric Company 383-8650
Peoples Gas Company 942-7600
Southwestern Bell Telephone Company 1-571-2611
City of Wichita Water Department 268-4908
City of Wichita Sewer Department 268-4071
- Utility service lines, poles, valve boxes, meters, et cetera are to be adjusted as necessary by others prior to construction unless the plans specifically call for their adjustment by the Contractor or unless the plans specifically identify a utility to be adjusted by its owner during construction. Existing utilities and their location, as shown on the plans, represent the best information obtainable for design and shall be field verified. The contractor will be required to work around existing utilities within the right-of-way which do not conflict with proposed construction.
- All disturbed R/W areas not intended for pavement or sidewalk construction shall be seeded with Kansas Premium Fescue Blend at a rate of 8 lb./1000 Sq. Ft., fertilized with a 16-20-6 ratio at a rate of 4 lb./1000 Sq. Ft., and mulched with Prairie Hay at a rate of 92 lb./1000 Sq. Ft. Mulch shall be "patted" with forks or punched into soil to reduce loss due to wind.
- Contractor shall not start work on the project until the project inspector is assigned to the project and is present on the site. Any work done without inspection will be required to be uncovered for inspection.
- Rubble from the removal of miscellaneous structures and excess excavation which is to be wasted shall be disposed of on sites to be provided by the Contractor. These sites shall be approved by the Engineer as to suitability, appearance and site location. Locations that, in the opinion of the Engineer, will leave an unsightly appearance will not be approved. All disposal sites must be approved by the Kansas Department of Health and Environment. Material either stockpiled or disposed of in a flood plain would require a Kansas State Board of Agriculture permit. Any material dumped in waters of the United States or wetlands is subject to U.S. Corps. of Engineers permitting regulations. Any material buried or stockpiled beyond approved construction limits would require additional archaeological investigations unless buried in a previously approved borrow location.
- Cuts made to paved surfaces on public property will be repaired by the City's contractor and charged against the owner/applicant. Unit repair prices are available from the City at 268-4418. A surcharge may be applicable; call 268-4418 for details. Repair costs to be paid prior to release of sewer service if sewer service is affected. Contractor shall obtain permit prior to construction.
- Contractor shall file all necessary permits with the city and county including the Sedgwick County Public Works Highway Permit Agreement Use Of Public Road Right-Of-Way.

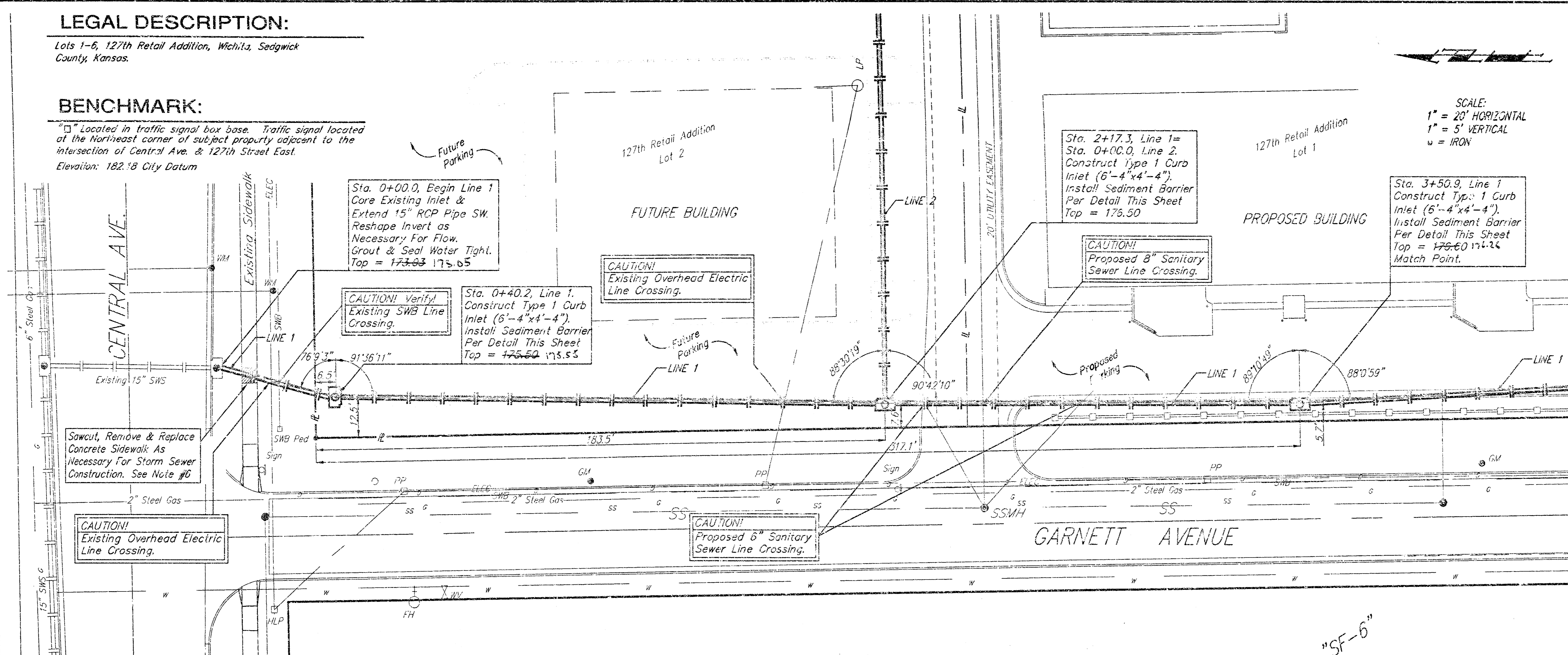


LEGAL DESCRIPTION:

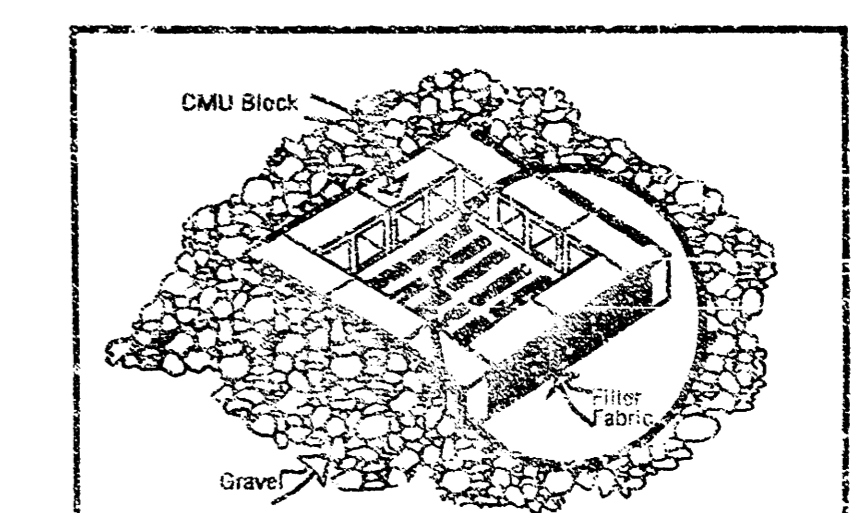
Lots 1-6, 127th Retail Addition, Wichita, Sedgwick County, Kansas.

BENCHMARK:

□ Located in traffic signal box base. Traffic signal located at the Northeast corner of subject property adjacent to the intersection of Central Ave. & 127th Street East. Elevation: 182.18 City Datum

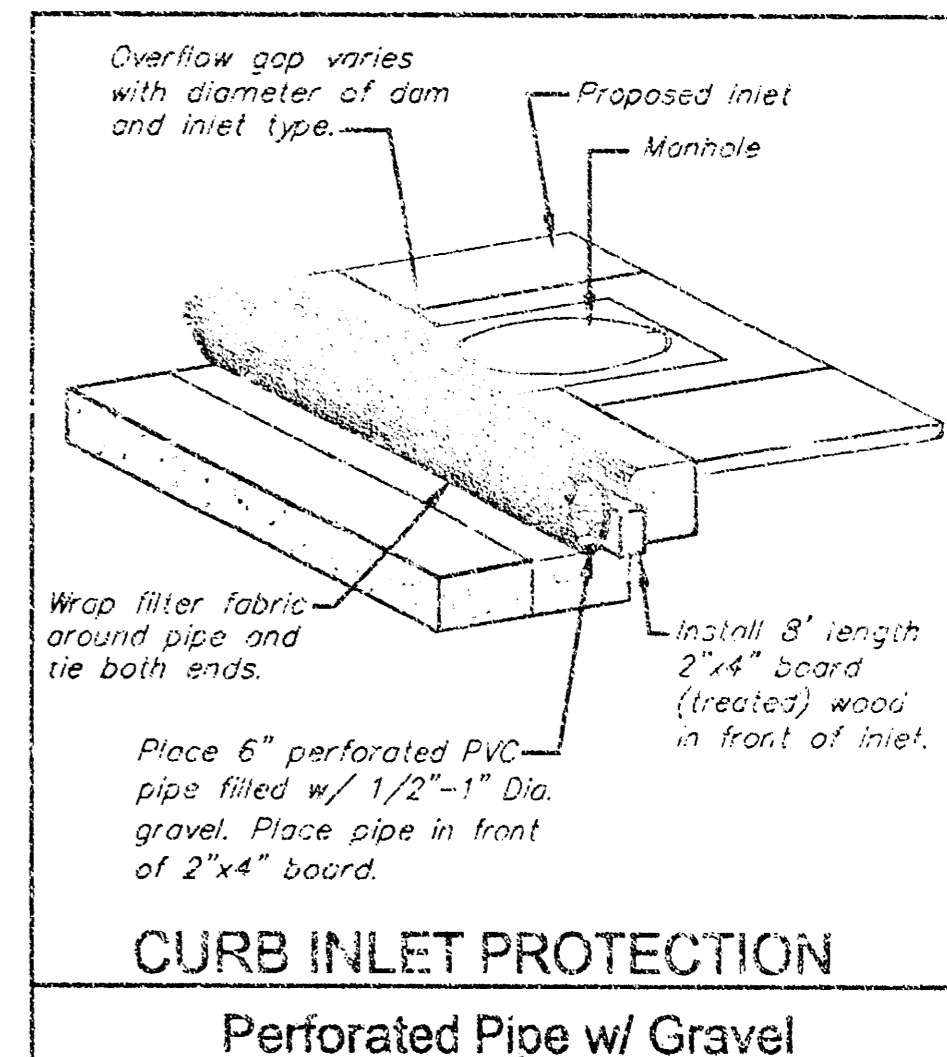


SCALE:
1" = 20' HORIZONTAL
1" = 5' VERTICAL
u = IRON



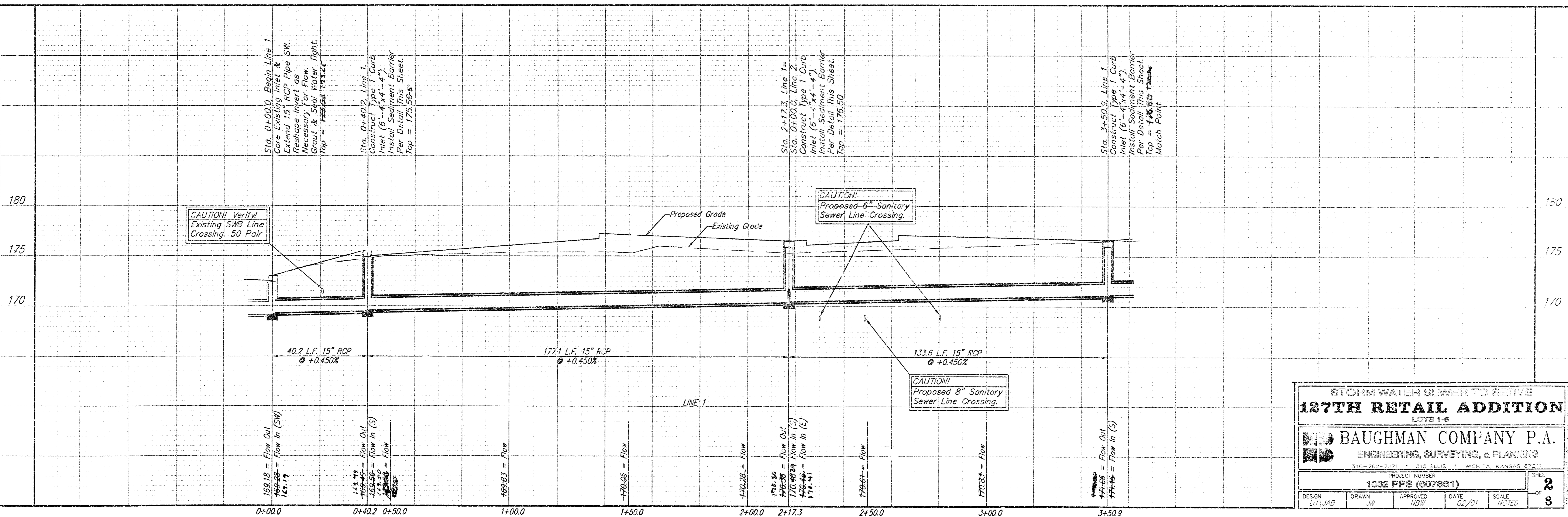
DROP INLET PROTECTION
Storm Drain with Gravel Apron

NOTES:
Frequent maintenance is required to minimize short-circuiting and to remove sediment deposits and buildup.
Wrap filter fabric around all CUI neck and backfill with 2"-3" gravel rock to allow sediment deposits.
DO NOT cover inlet or grate with filter fabric.



CURB INLET PROTECTION
Perforated Pipe w/ Gravel

Overflow gap varies with diameter of pipe and inlet type.
Proposed inlet
Manhole
Wrap filter fabric around pipe and tie both ends.
Install 3' length 2"x4" board (treated) wood in front of inlet.
Place 6" perforated PVC pipe filled w/ 1/2"-1" Dia. gravel. Place pipe in front of 2"x4" board.



STORM WATER SEWER TO SERVE 127TH RETAIL ADDITION
LOTS 1-6

BAUGHMAN COMPANY P.A.
ENGINEERING, SURVEYING, & PLANNING
316-262-7371 • 315 ELLIS • WICHITA, KANSAS 67211

PROJECT NUMBER: 1032 PPS (007881)

DESIGN	DRAWN	APPROVED	DATE	SCALE
CU/JAB	JW	NBW	02/01	NOTED

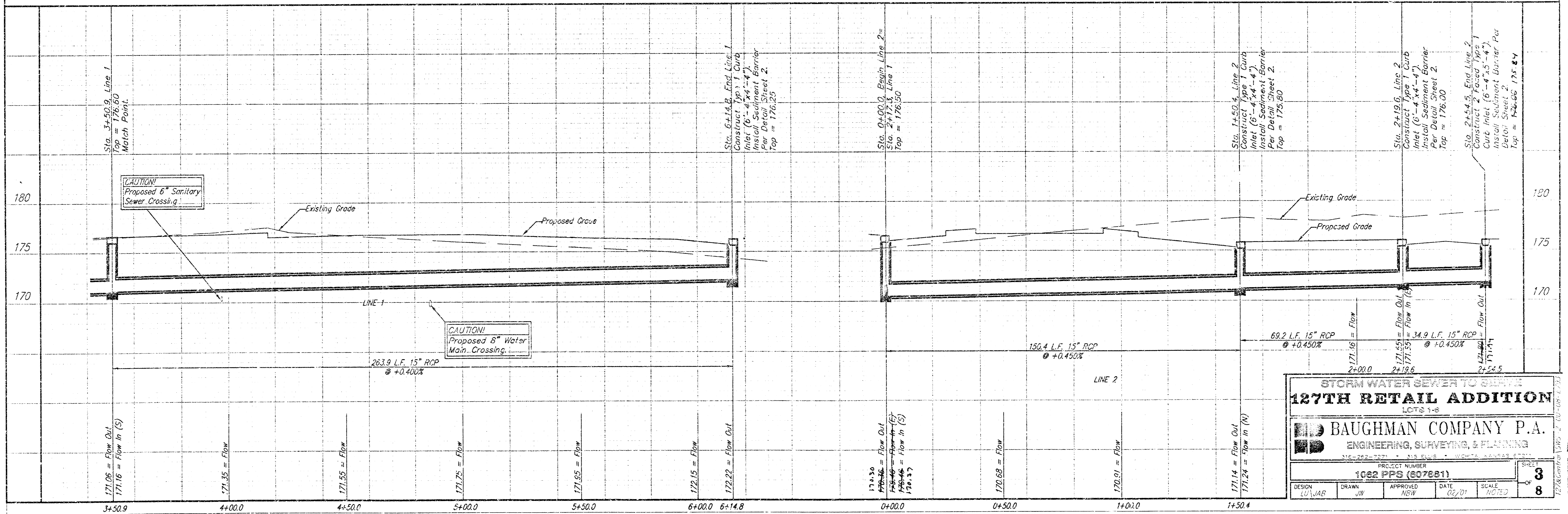
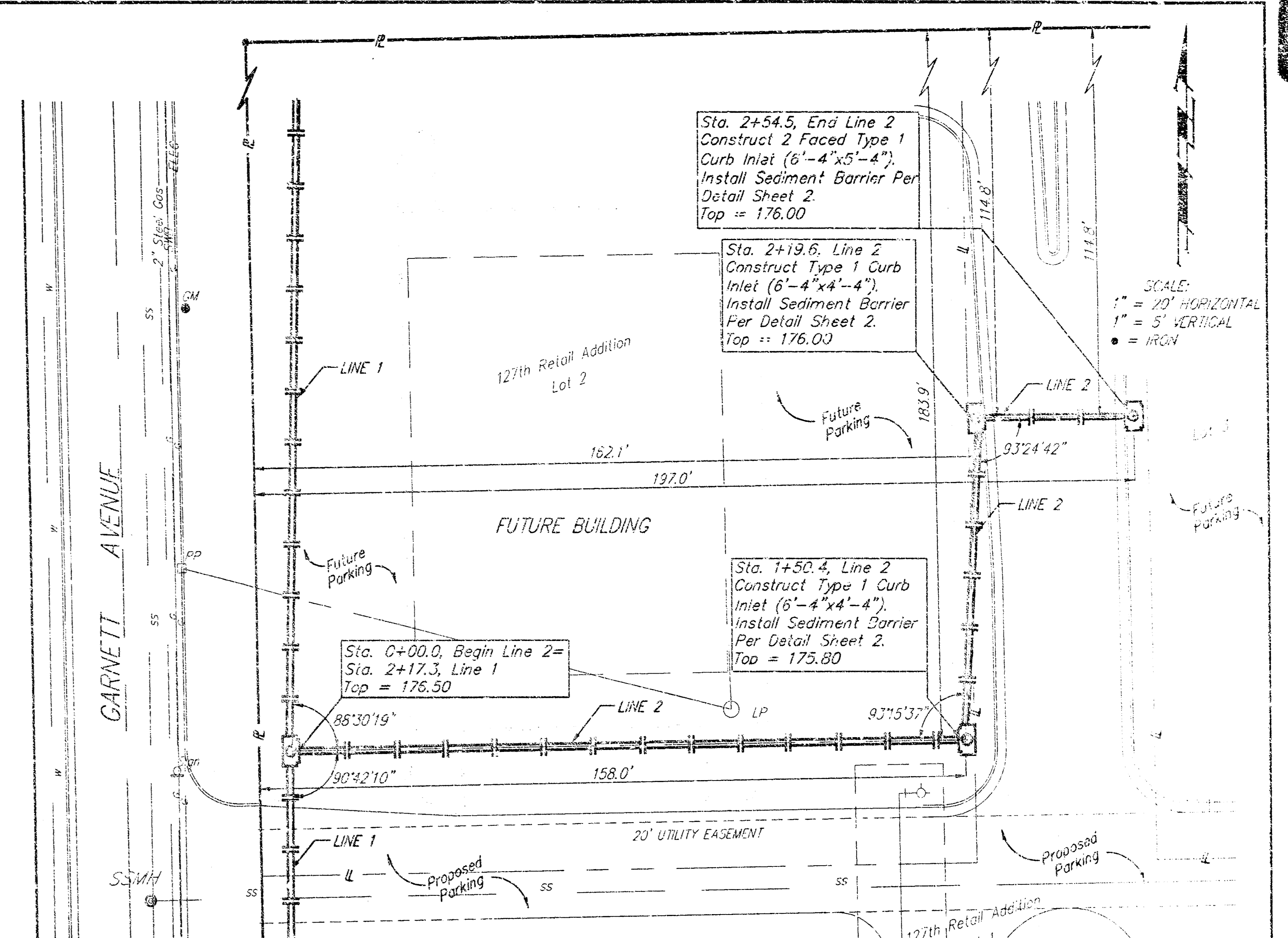
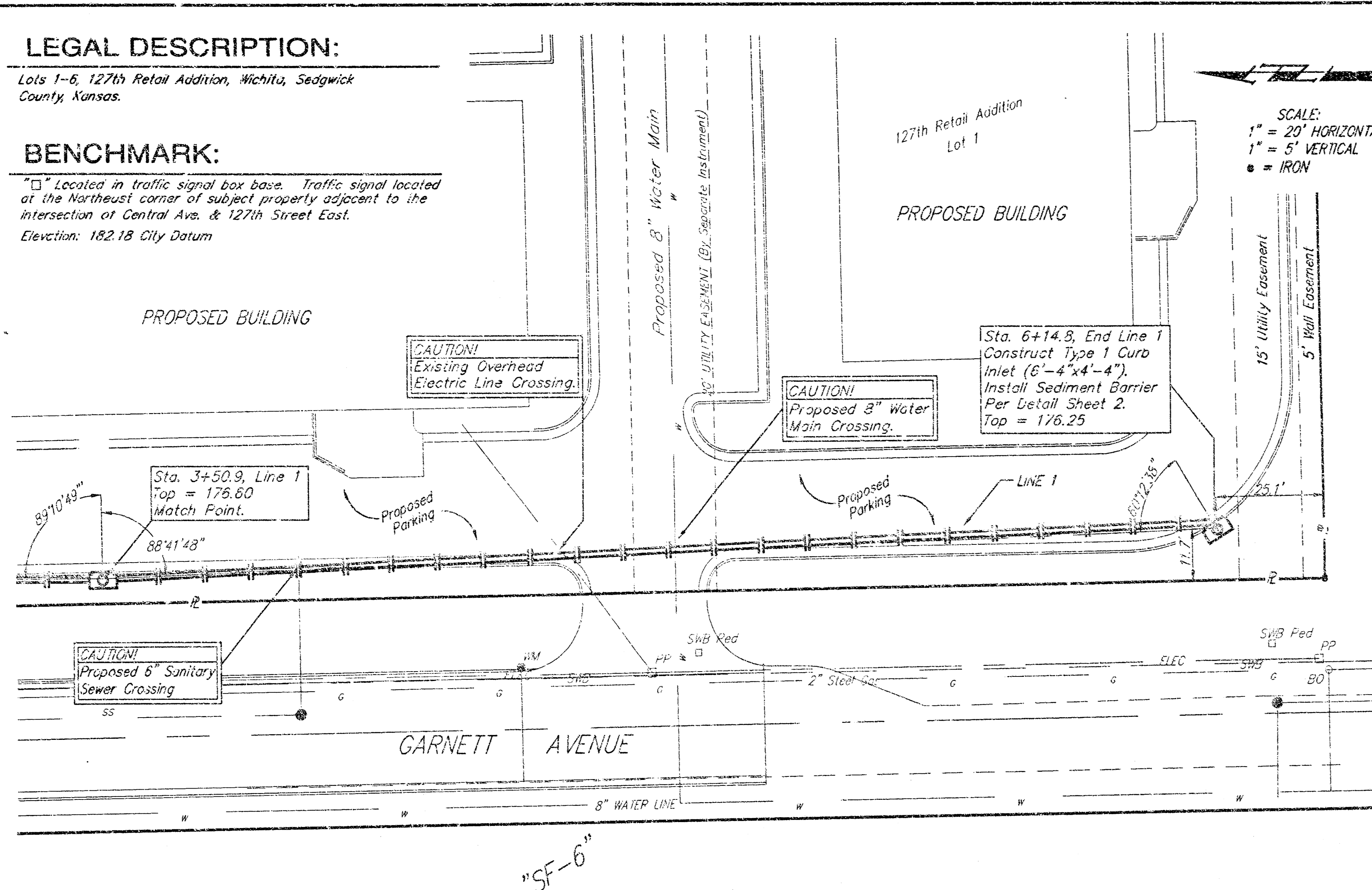
SHEET 2 OF 8

LEGAL DESCRIPTION:

Lots 1-6, 127th Retail Addition, Wichita, Sedgwick County, Kansas.

BENCHMARK:

Located in traffic signal box base. Traffic signal located at the Northeast corner of subject property adjacent to the intersection of Central Ave. & 127th Street East. Elevation: 182.18 City Datum



STORM WATER SEWER TO SERVE 127TH RETAIL ADDITION
 LOTS 1-6

BAUGHMAN COMPANY P.A.
 ENGINEERING, SURVEYING, & PLANNING

PROJECT NUMBER: 1062 PPS (807681)

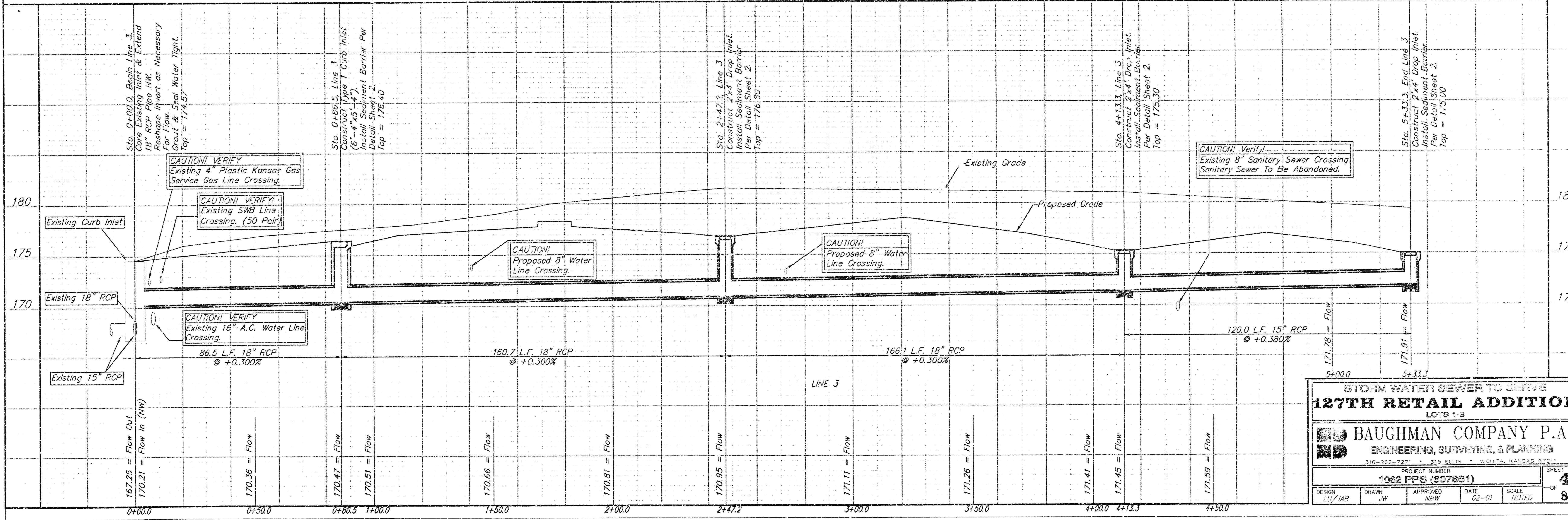
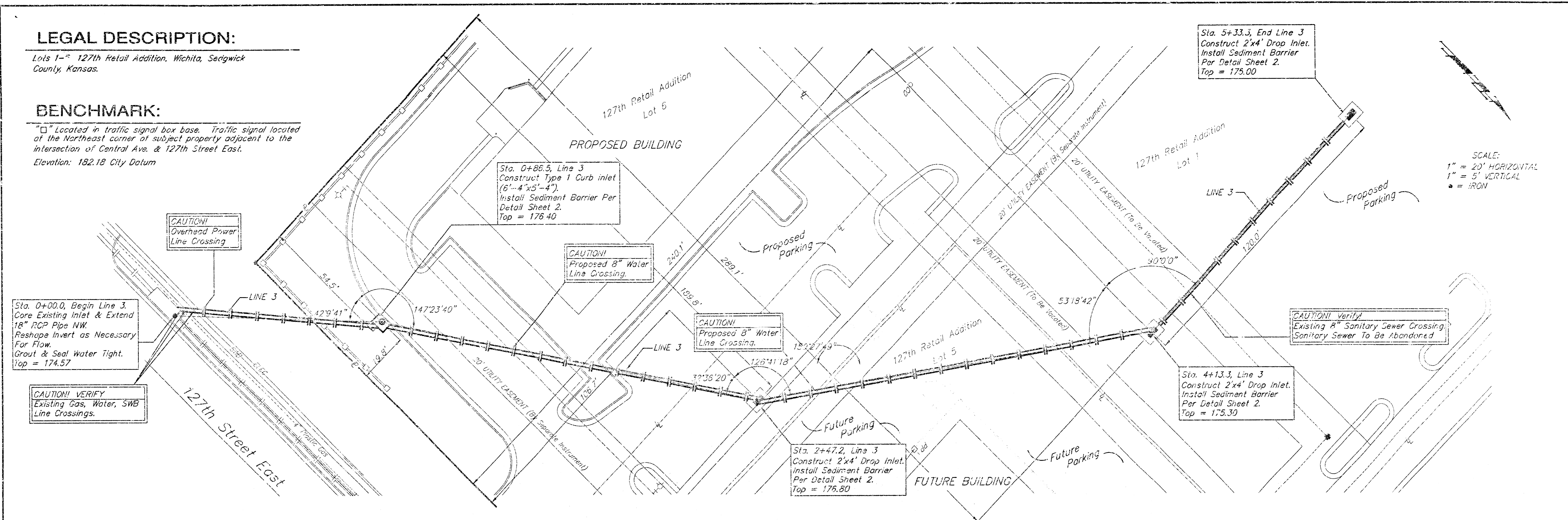
DESIGN: LU/JAB	DRAWN: JW	APPROVED: NBW	DATE: 02/01	SCALE: 1/8"=1'-0"
SHEET NO. 3				OF 8

LEGAL DESCRIPTION:

Lots 1-5 127th Retail Addition, Wichita, Sedgwick County, Kansas.

BENCHMARK:

□ Located in traffic signal box base. Traffic signal located at the Northeast corner of subject property adjacent to the intersection of Central Ave. & 127th Street East.
Elevation: 182.18 City Datum



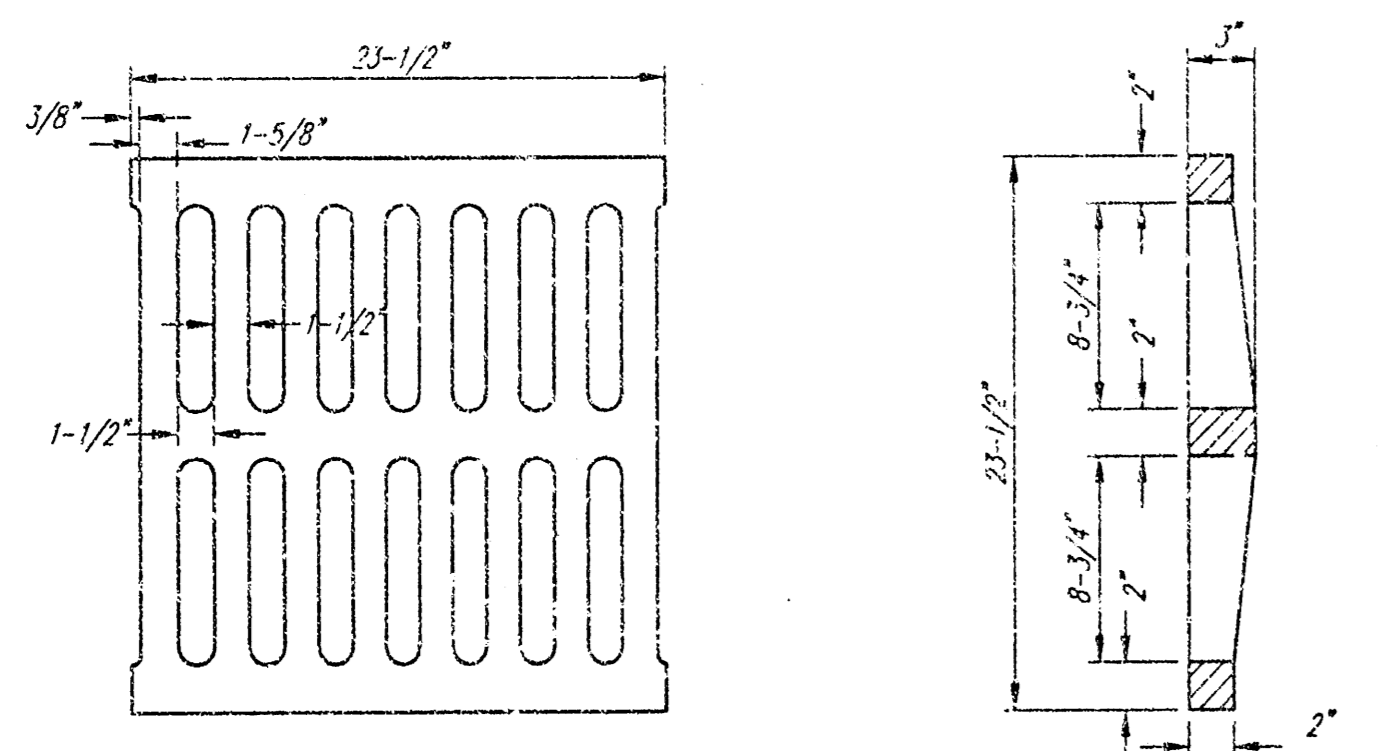
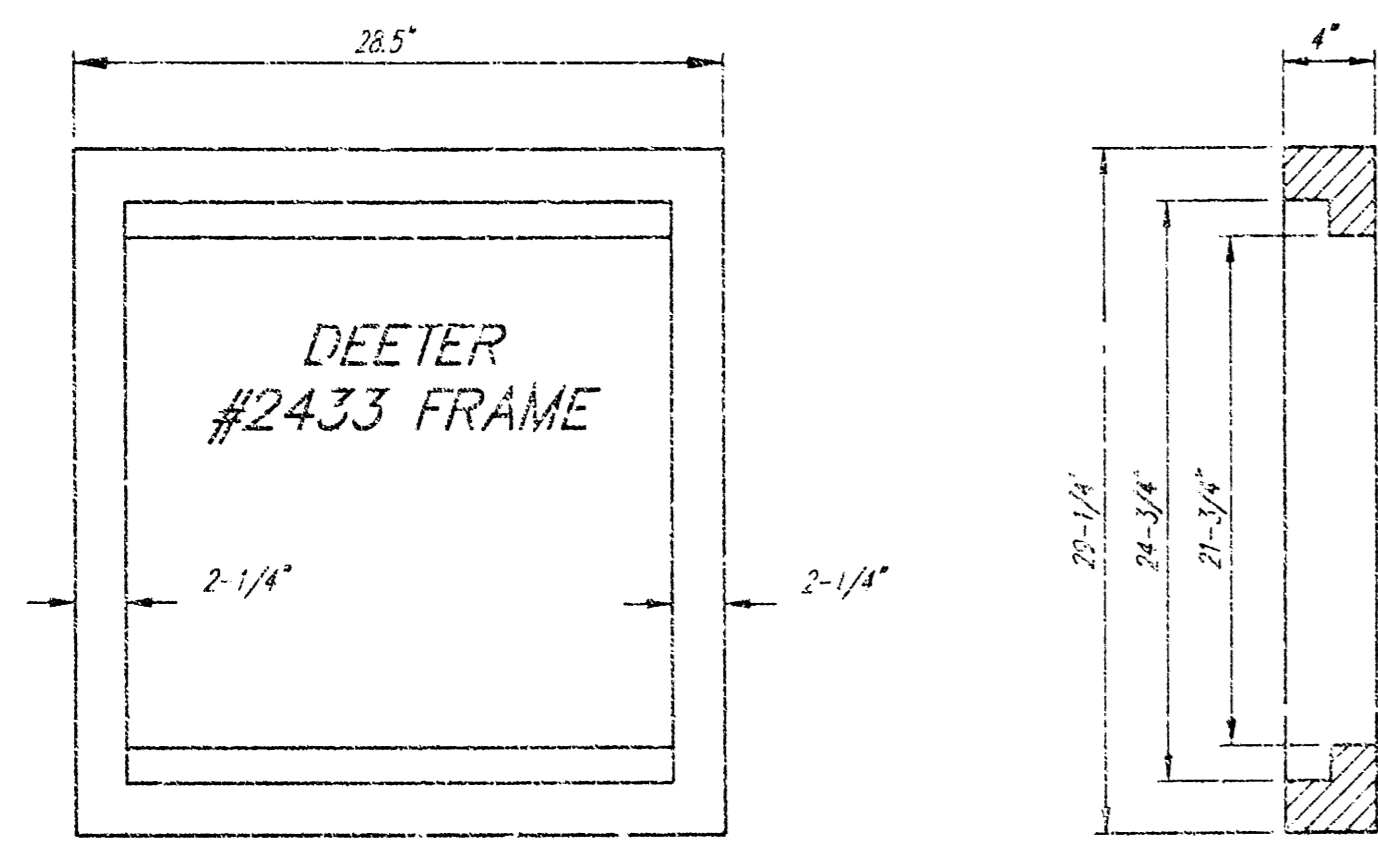
**STORM WATER SEWER TO SERVE
127TH RETAIL ADDITION**
LOTS 1-5

BAUGHMAN COMPANY P.A.
ENGINEERING, SURVEYING, & PLANNING
316-262-7271 • 315 ELLIS • WICHITA, KANSAS 67202

PROJECT NUMBER
1082 PPS (807851)

DESIGN LU/MB	DRAWN JW	APPROVED NEW	DATE 6-2-01	SCALE NOTED
-----------------	-------------	-----------------	----------------	----------------

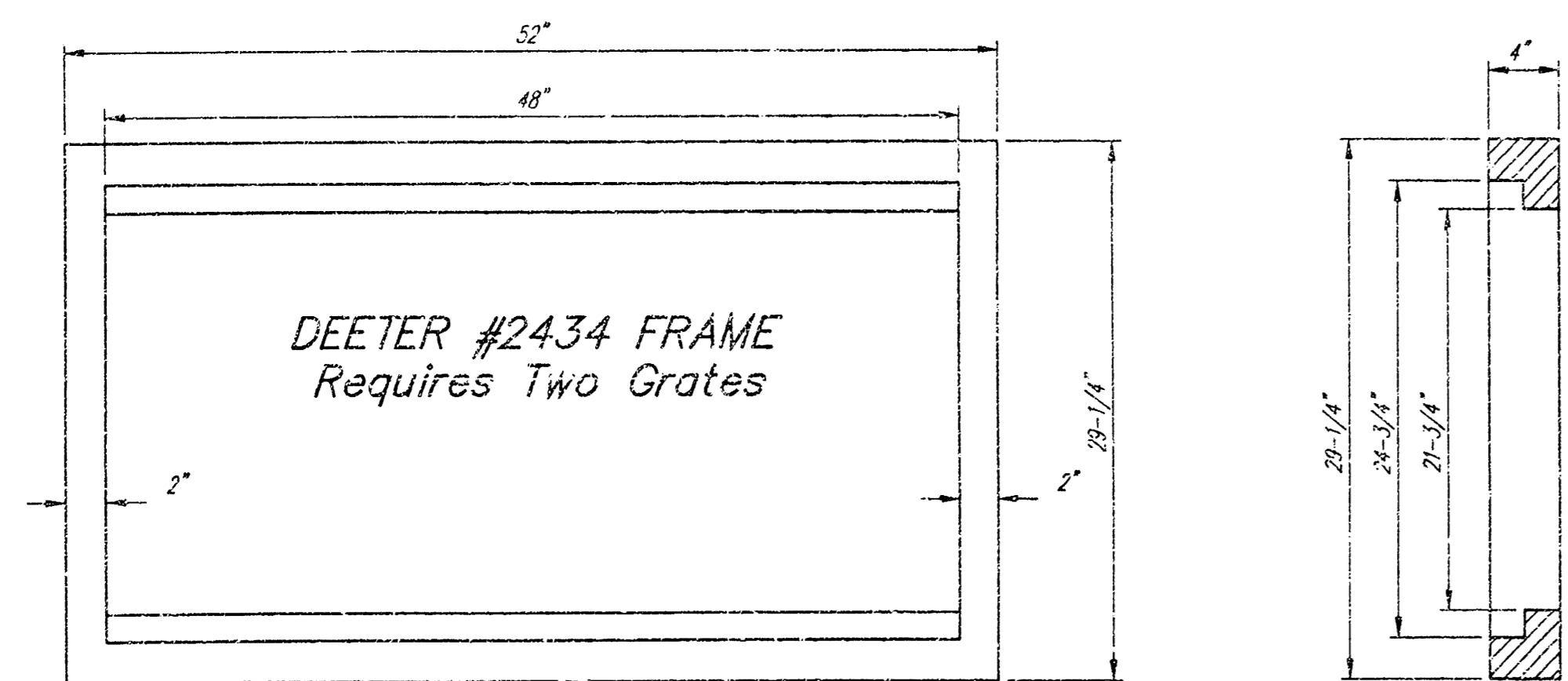
SHEET
4
OF
8



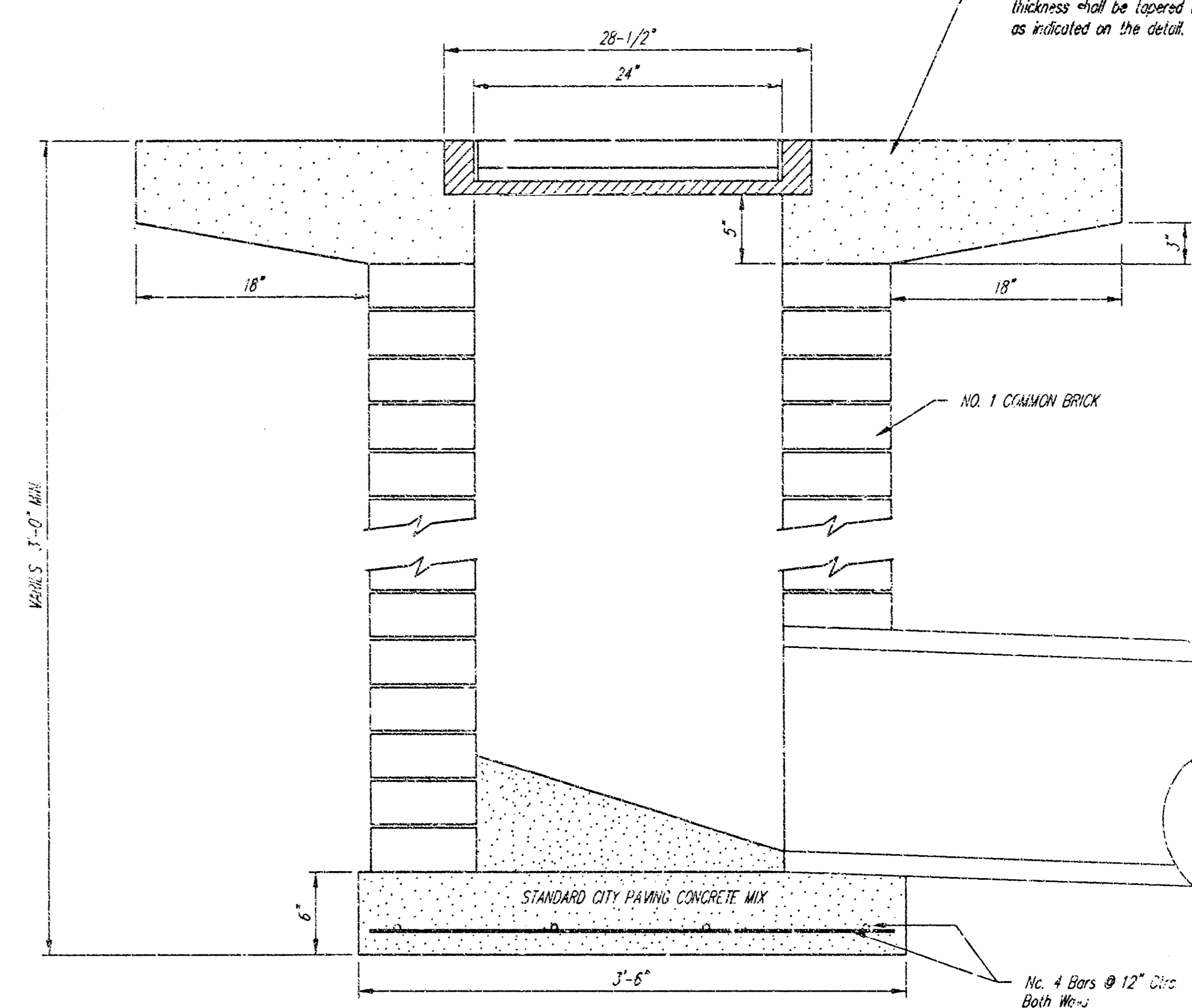
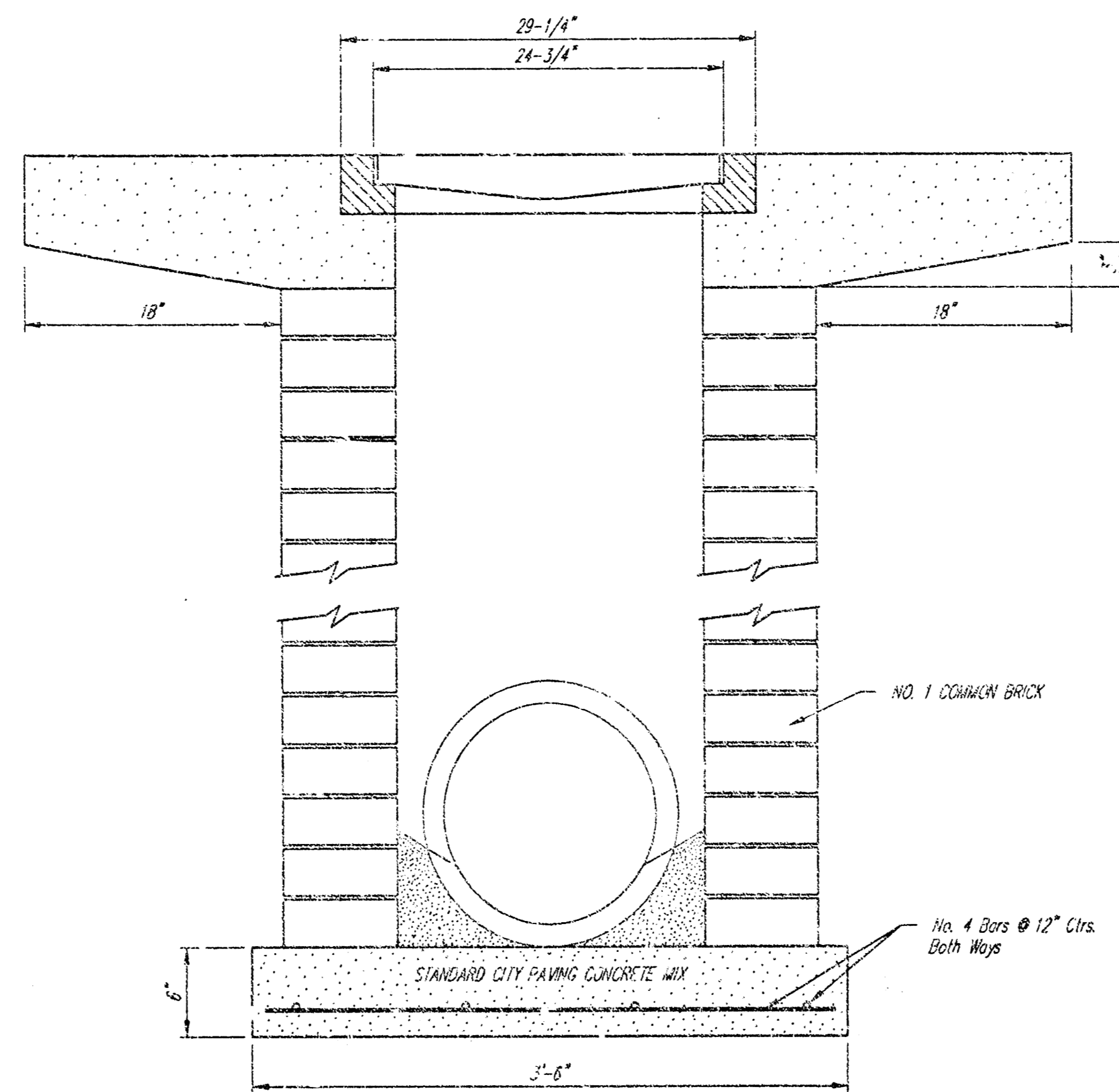
DEETER #2433 GRATE

24" x 24" Frame and Grate Detail

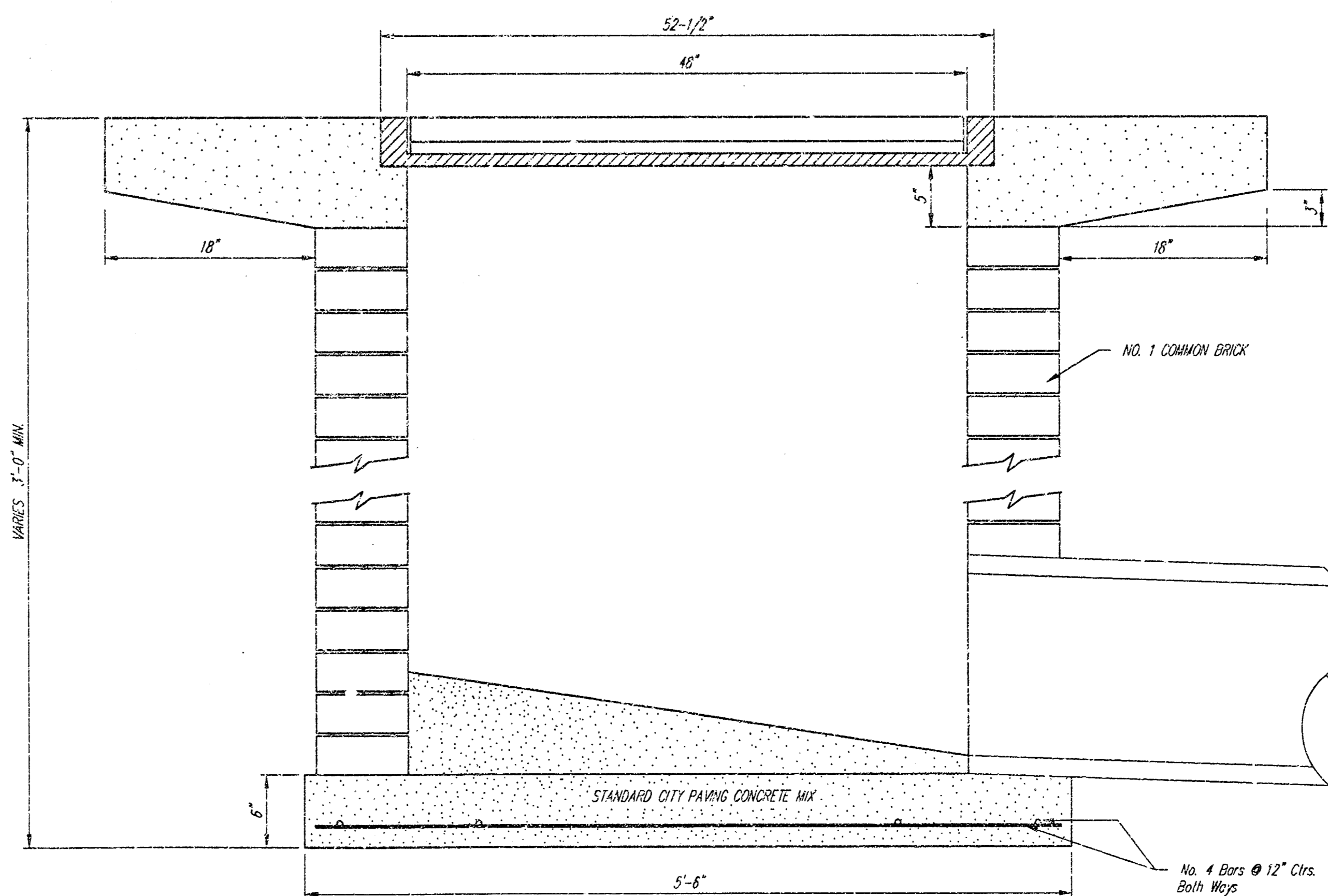
NOTE: Grates shall be imprinted on the top surface with "CITY OF WICHITA" using letters at least 1" in height. Other marking methods may be approved by the engineer.



Double 24" x 24" Frame Detail

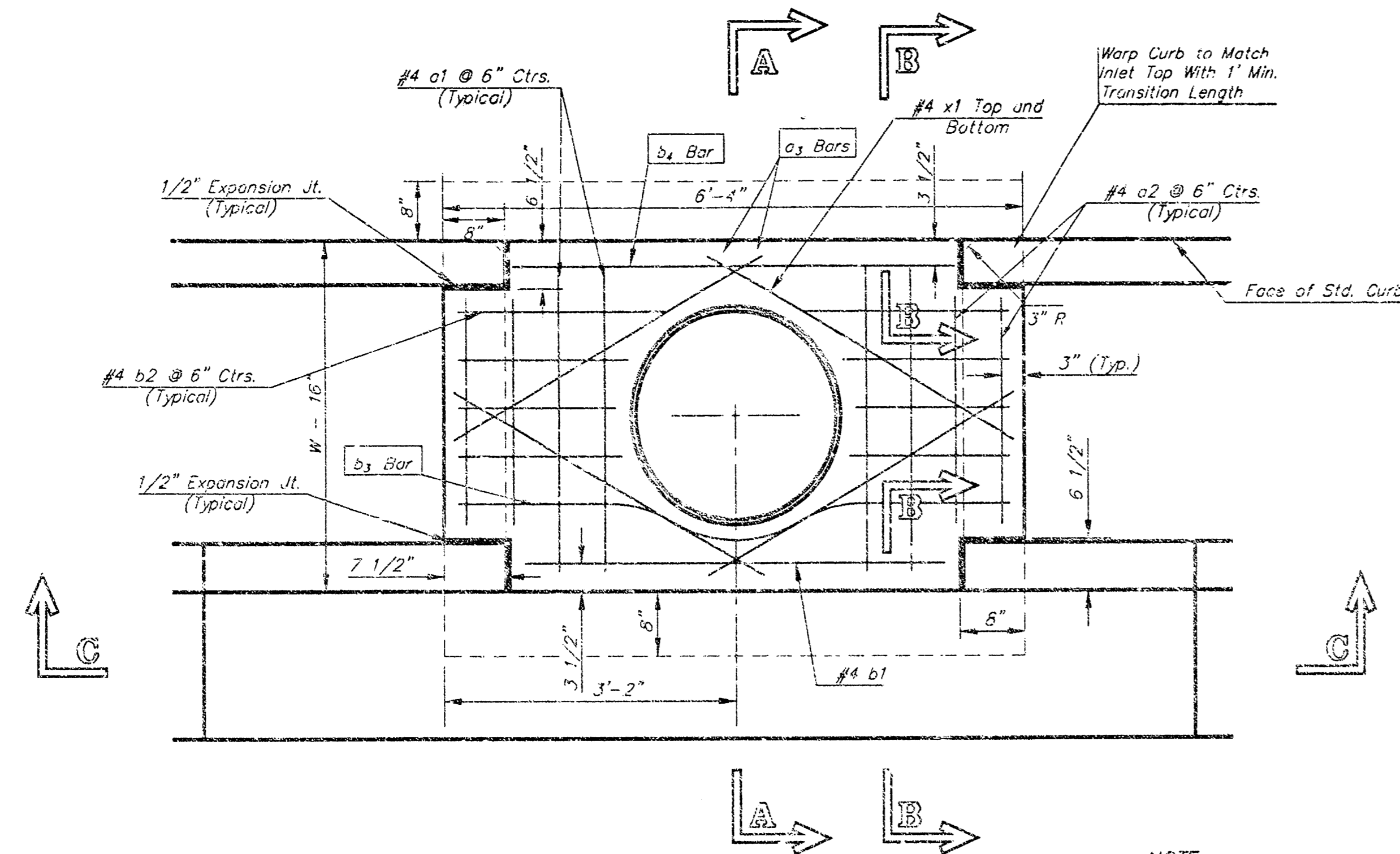


Note: Concrete apron shall be constructed around the inlet when inlet is located in an unpaved area. Where the inlet is adjacent to pavement, the pavement thickness shall be tapered to the inlet in 10 ft. as indicated on the detail.



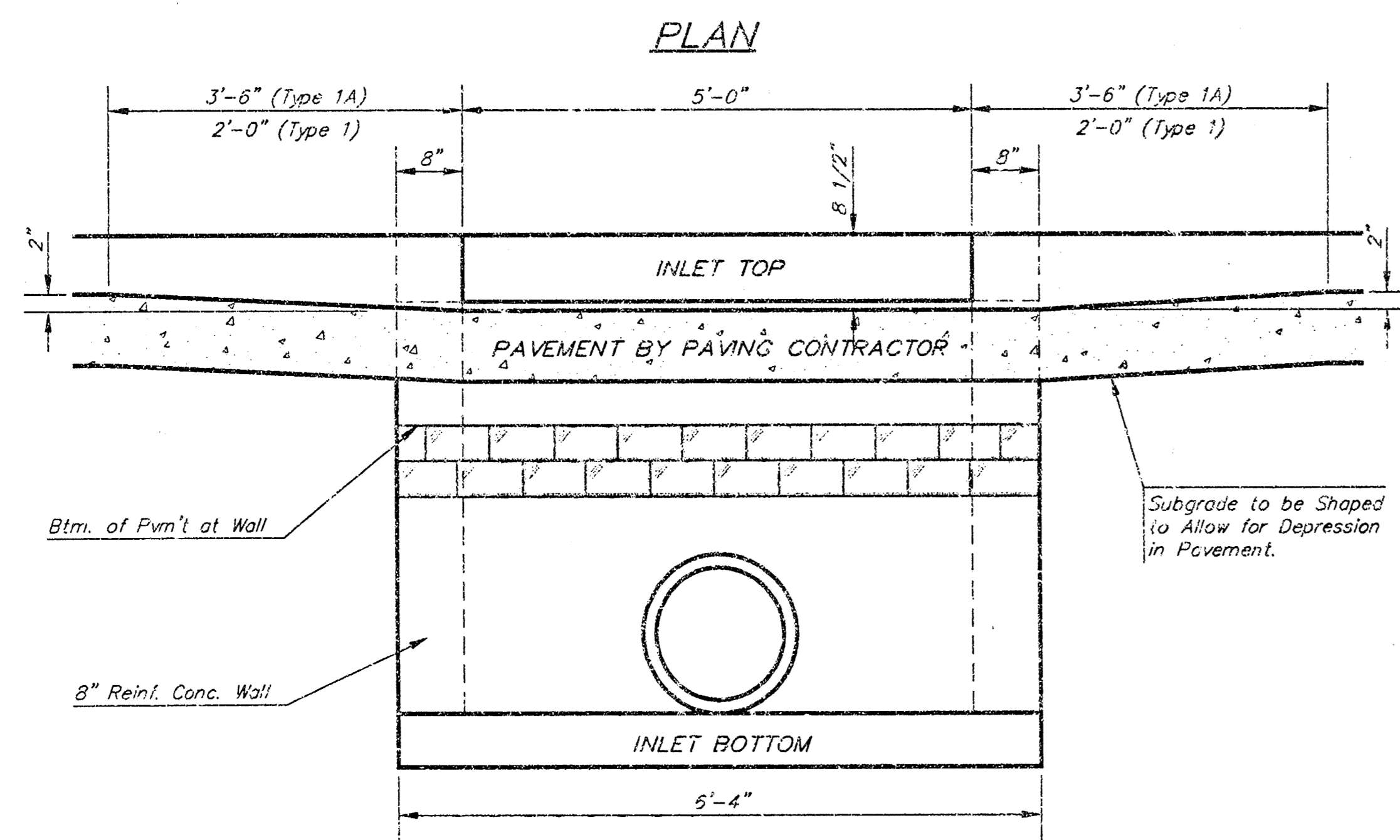
CITY OF WICHITA					
STANDARD DROP INLET					
BAUGHMAN COMPANY P.A.					
ENGINEERING, SURVEYING, & PLANNING					
316-262-7271 • 315 ELLIS • WICHITA, KANSAS 67211					
PROJECT NUMBER					
1082 PPS (807821)					
DESIGN	DRAWN	APPROVED	DATE	SCALE	SHEET
STAFF	STAFF		02/01	NONE	6
					OF
					8

1278 Central Dr. Wichita, KS 67211

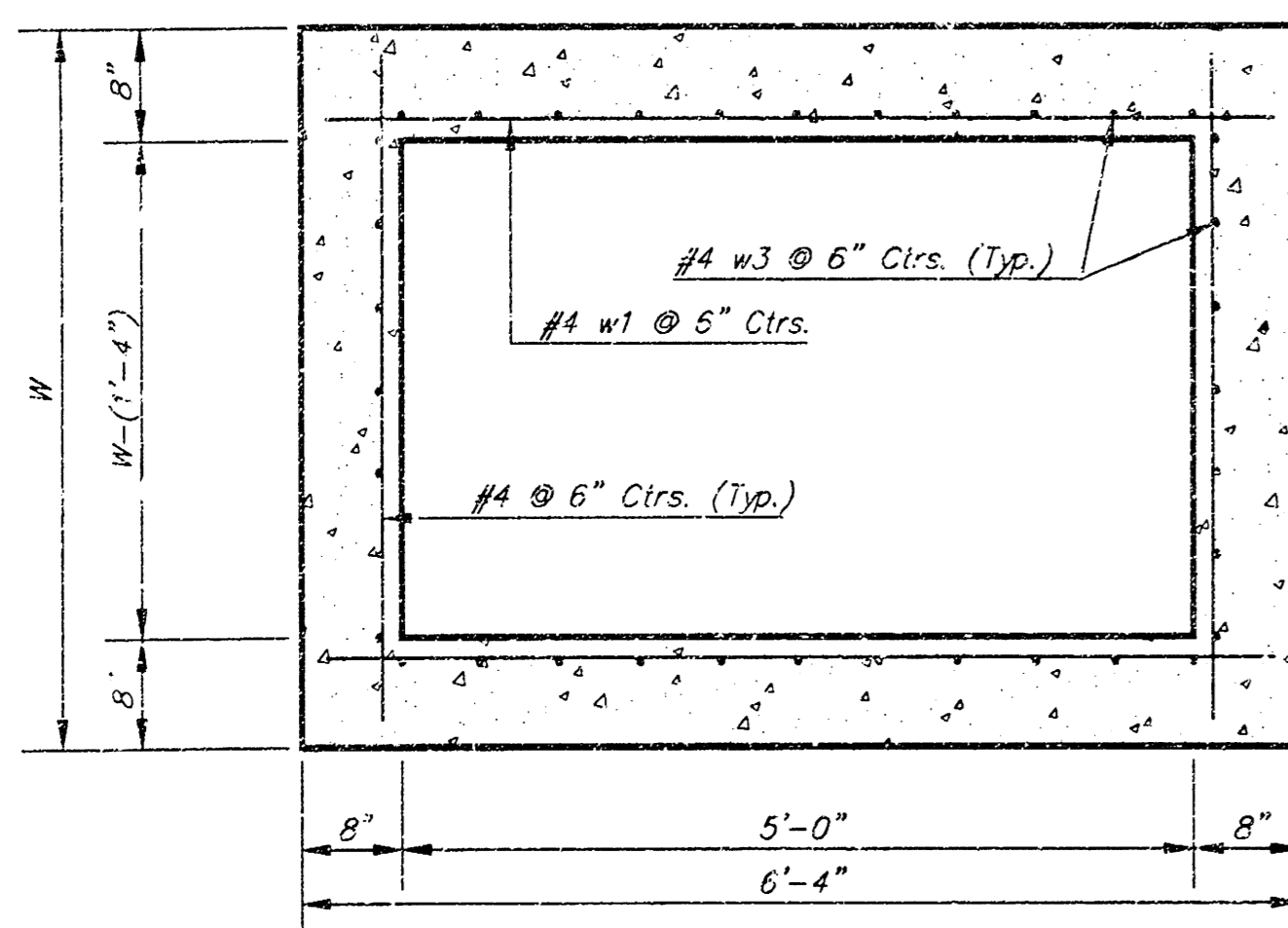


NOTE:
Inlet Top Reinforcing shall be Spaced on 6" Max. Centers. Inlet Lias Shall be Notched Out as Indicated to Facilitate Construction of Curb.

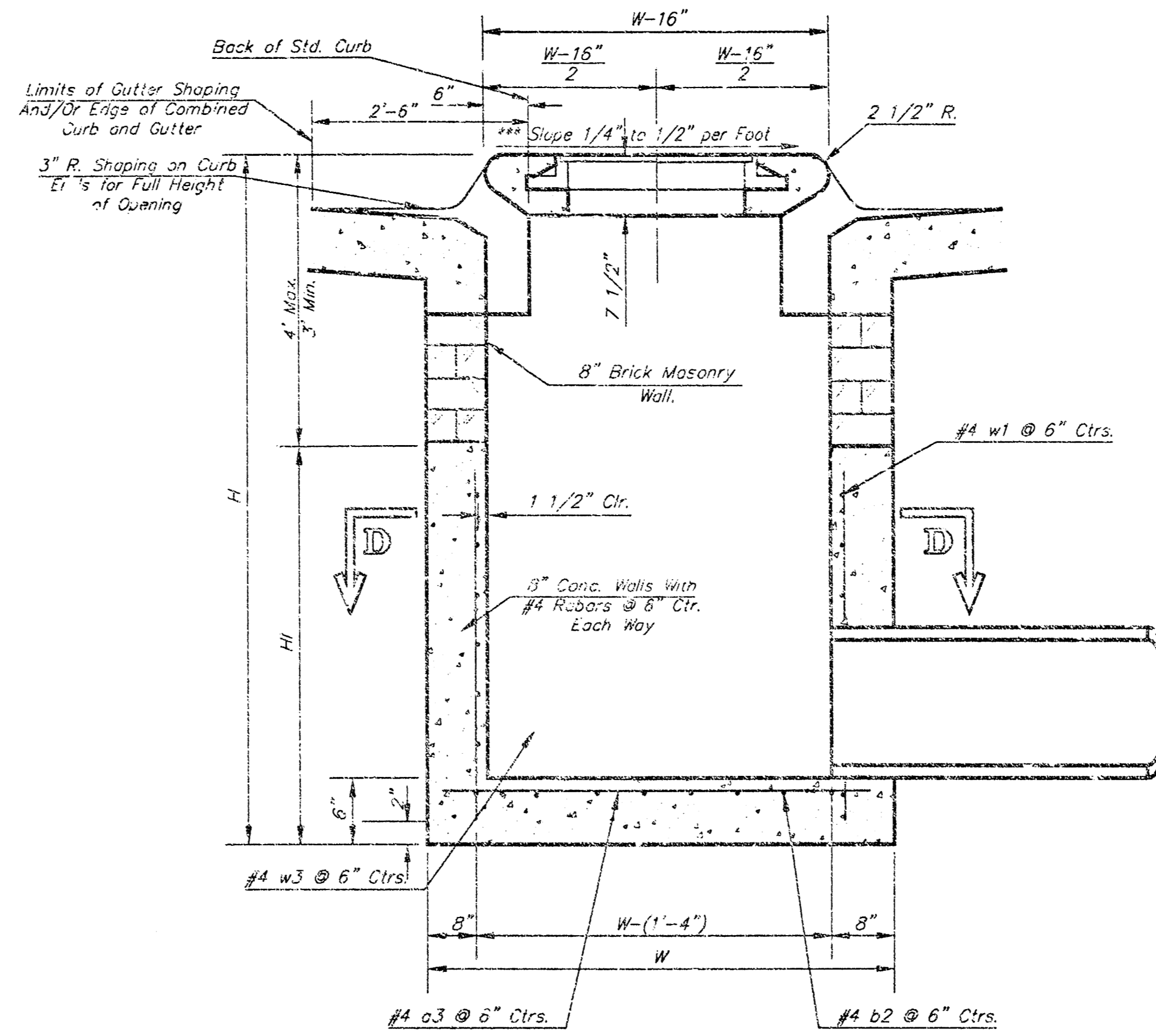
NOTE:
Concrete Tops to be installed on thin mortar cushion to insure full support along brick walls. Concrete tops may be cast in place or precast. Concrete used for inlet construction shall be concrete pavement mix with air entrainment. b₁ Bar to be Field Bent to Clear Inlet Frame.



SECTION C-C

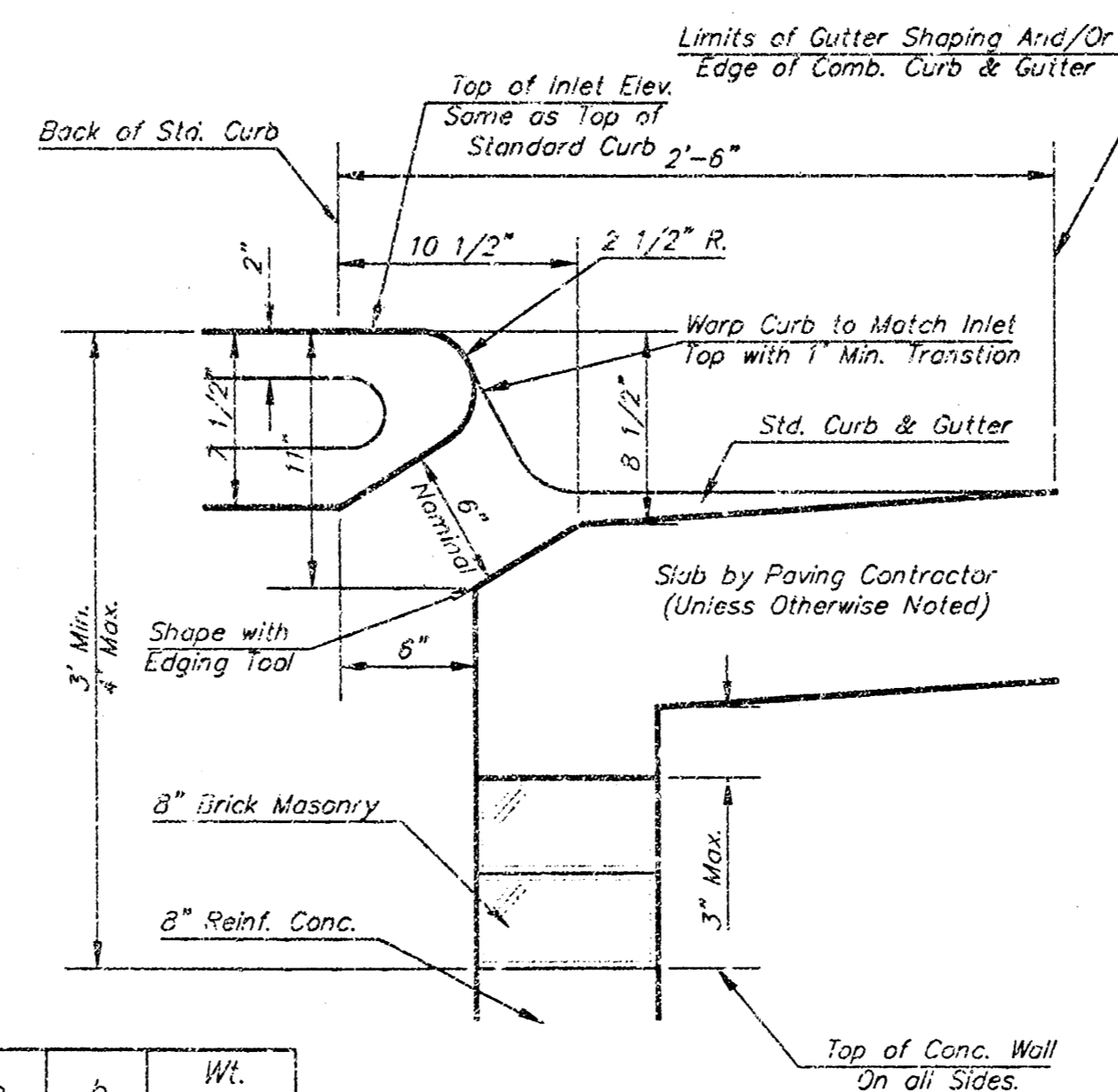


SECTION D-D



SECTION A-A

**NOTE: Slope of Inlet tops to Match Sidewalk or P₁ Slopes within Limits Indicated.

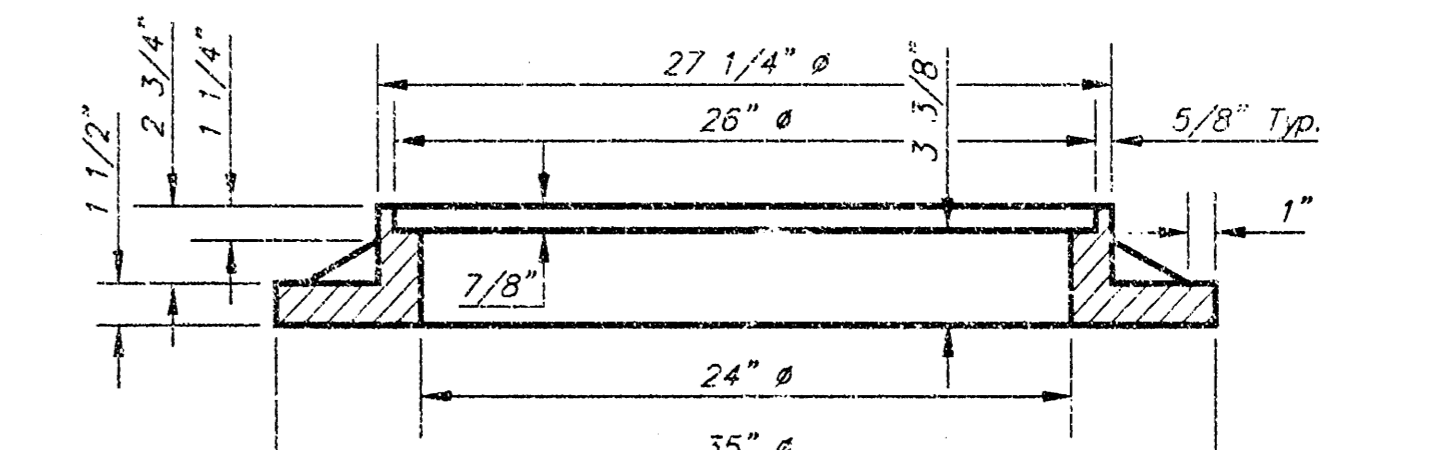
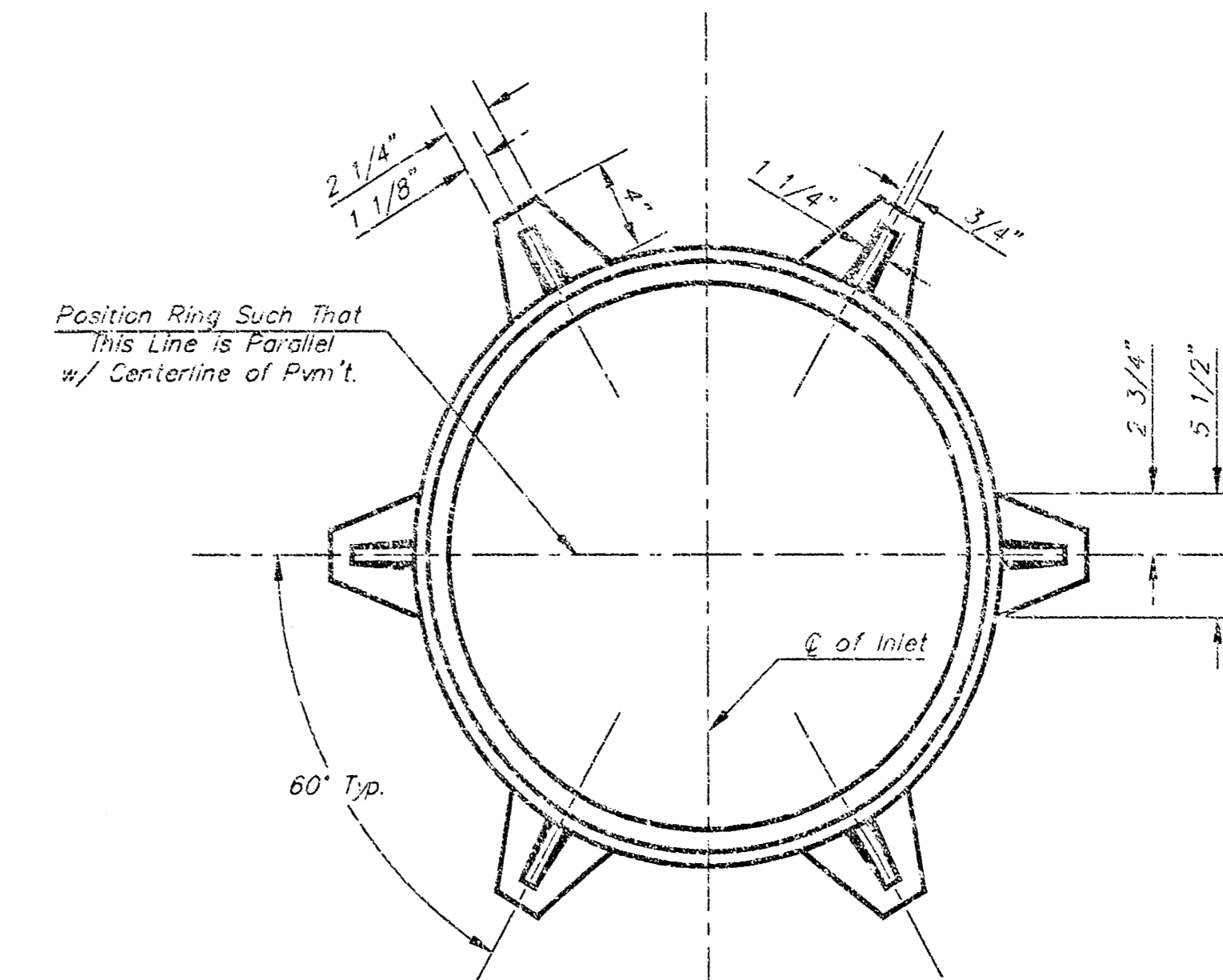


SECTION B-B

NOTE: Contractor shall have the option of constructing 8" brick masonry walls between the concrete inlet base and top on this inlet when W=6'-4" and H=7'-0" or less.

Inlet Invert shall be shaped with 3 sack sand mix concrete to create low channels and to increase hydraulic efficiency such that the inlet will be self-cleaning between all inlet and/or outlet pipes.
The ends of all pipes installed in inlets shall be cut off flush with the inside face of the inlet wall

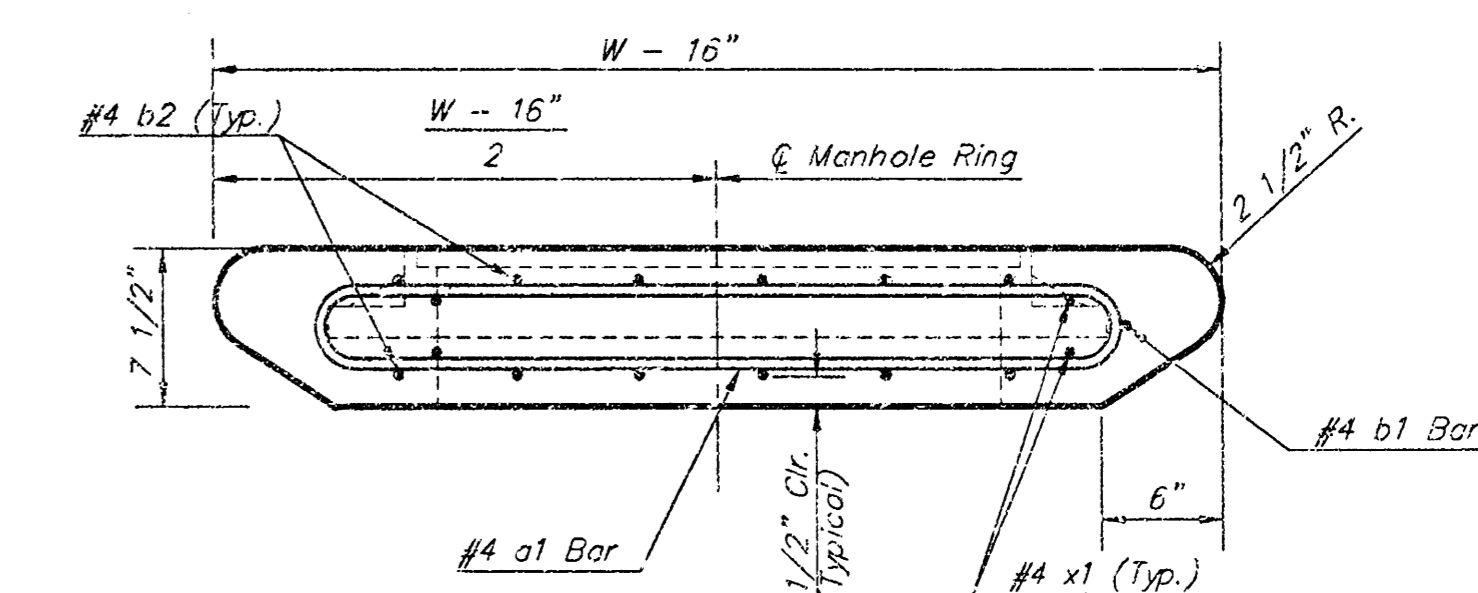
STANDARD CURB INLET PRECAST TOPS			
W	PRE-CAST TOP SIZE	PIPE SIZE	CU. YD. CONC.
4'-4"	3'-8" x 5'-4" x 7 1/2"	21" & SMALLER	0.30±
5'-4"	4'-8" x 6'-4" x 7 1/2"	24" & 30"	0.51±
6'-4"	5'-8" x 6'-4" x 7 1/2"	36" & 42"	0.64±
7'-4"	6'-8" x 6'-4" x 7 1/2"	48" & 54"	0.77±
8'-4"	7'-8" x 6'-4" x 7 1/2"	60" & 66"	0.90±



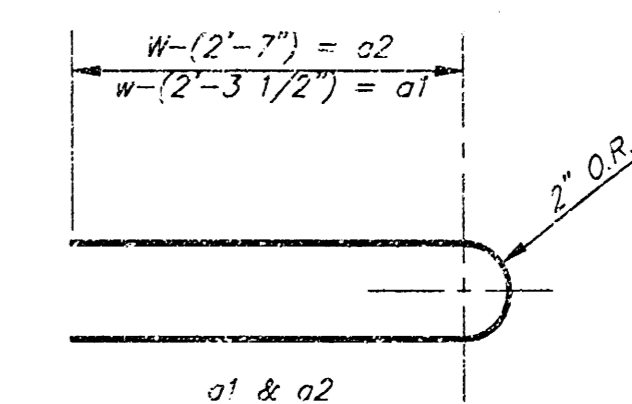
MANHOLE RING AND COVER

Weight = 180 Lbs.

*See City of Wichita Standard Manhole Ring and Cover Detail Sheet for Cover Details to Be Used With Inlet Frames.



SECTION A-A



BENDING DIAGRAM

STEEL SCHEDULE

BAR NUMBER	a ₁			a ₂				b ₂	b ₃	b ₄	Wt. LBS.
	#4	#4	#4	#4-4"	#4-5"	#4-6"	#4-7"				
SIZE	#4	#4	#4	#4	#4	#4	#4	#4	#4	#6	
W=4'-4"	5'-7"	6'-7"	4'-0"	6'-1"	-	-	-	1'-9"	6'-2"	4'-8"	60±
W=5'-4"	7'-7"	8'-7"	5'-0"	-	6'-1"	-	-	1'-9"	6'-2"	4'-8"	81±
W=6'-4"	9'-7"	10'-7"	6'-0"	-	-	6'-1"	-	1'-9"	6'-2"	4'-8"	101±
W=7'-4"	11'-7"	12'-7"	7'-0"	-	-	-	6'-1"	1'-9"	6'-2"	4'-8"	121±
W=8'-4"	13'-7"	14'-7"	8'-0"	-	-	-	-	6'-1"	1'-9"	6'-2"	141±

Note: a₂ Bars to be Placed Approx. 2" Below Top of Inlet Cover.

WALL REINFORCING											
MARK	SIZE	W = 4'-4"		W = 5'-4"		W = 6'-4"		W = 7'-4"		W = 8'-4"	
		NO.	LENGTH	NO.	LENGTH	NO.	LENGTH	NO.	LENGTH	NO.	LENGTH
w1	#4	①	6'-1"	①	6'-1"	①	6'-1"	①	6'-1"	①	6'-1"
w2	#4	①	4'-1"	①	5'-1"	①	6'-1"	①	7'-1"	①	8'-1"
w3	#4	②	36	②	40	②	44	②	48	②	

* Field Bend or Cut Reinforcing as Required for Clearance.

① 4 (H - 12) (H - 21) Rounded down to nearest 0.5'
② H - 3'

CITY OF WICHITA
DOUBLE FACED TYPE 1
CURB INLET DETAILS

BAUGHMAN COMPANY P.A.
ENGINEERING, SURVEYING, & PLANNING
315 E. WILSON - WICHITA, KANSAS 67211

PROJECT NUMBER
1062 PPS (607861)

DESIGN Staff DRAWN Staff APPROVED DATE 02/01 SCALE NONE

SHEET **7** OF **8**

