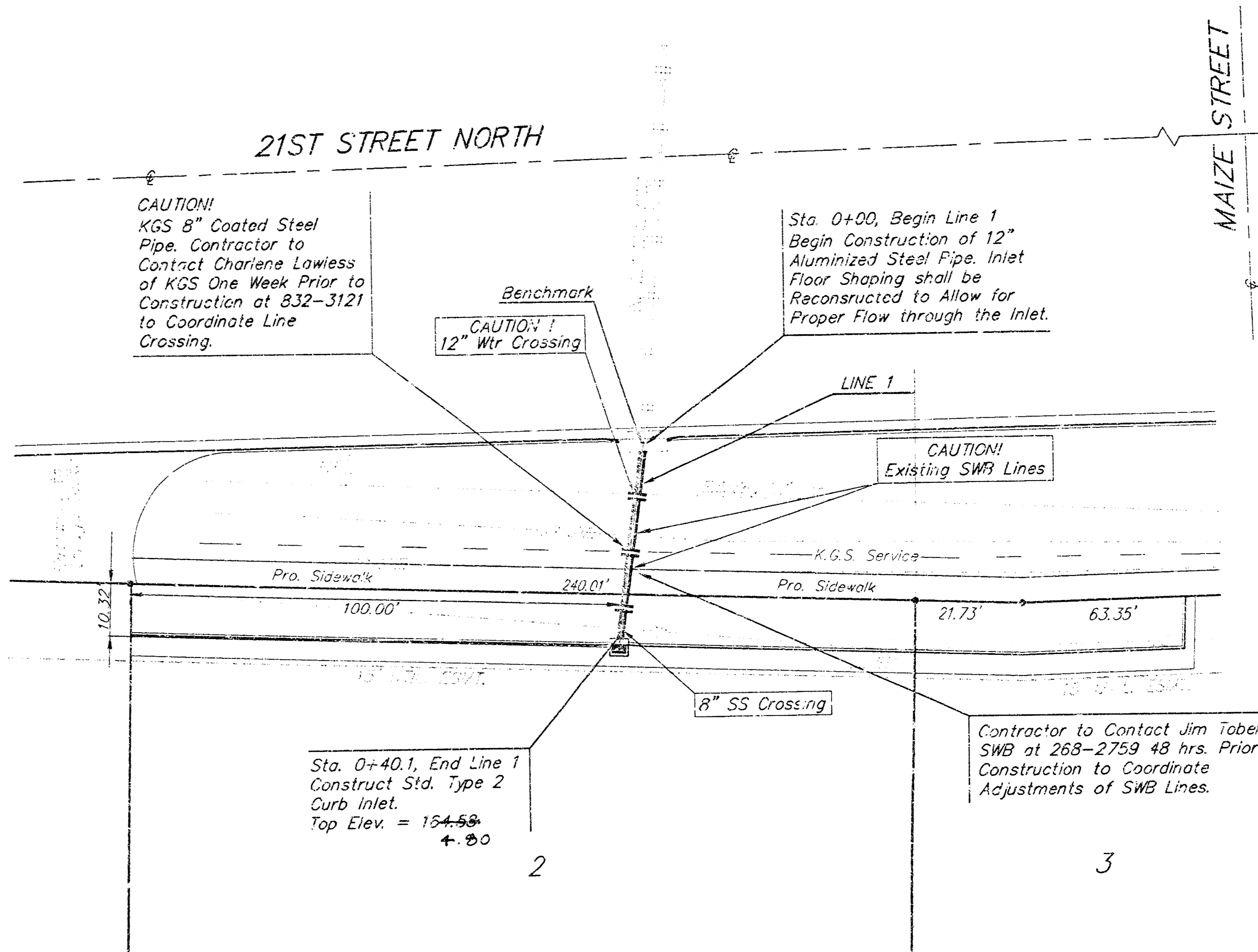


# STORM WATER SEWER

to serve  
**Pearson Farms 3rd Addition**  
Lot 3 & Parcel A, Lot 2

**CITY OF WICHITA, KANSAS**  
Michael E. Lindebak, P.E. City Engineer  
Private Project Number  
**1074 PPS (607861)**



### GENERAL NOTES:

- Contractor will be required to provide notice to utility companies a minimum of twenty-four (24) hours prior to any excavation, as follows:  
Kansas One-Call 687-2470  
The Contractor must notify the following in case of an emergency:  
Cox Communications 262-0651  
Kansas Gas Service Company 383-8600  
KGE 303-8600  
Peoples Gas Company 942-8350  
Southwestern Bell Telephone Company 1-800-344-7233  
City of Wichita Water Dept. 268-4908  
City of Wichita Traffic Engineering 269-4446
- Underground utility service lines and overhead utility pole lines are to be adjusted as necessary by others prior to construction unless the plans specifically call for their adjustment by the Contractor or unless the plans specifically identify a utility to be adjusted by its owner during construction. Existing utilities and their location, as shown on the plans, represent the best information obtainable for design. The Contractor will be required to work around existing utilities within the right-of-way which do not conflict with proposed construction.
- Rubble from the removal of miscellaneous structures and excess excavation which is to be wasted shall be disposed of on sites to be provided by the Contractor. These sites shall be approved by the Engineer as to suitability, appearance and site location. Locations that, in the opinion of the Engineer, will leave an unsightly appearance will not be approved. All disposal sites must be approved by the Kansas Department of Health and Environment. Material either stockpiled or disposed of in a fiscal plain would require a Kansas State Board of Agriculture permit. Any material dumped in waters of the United States or wetlands is subject to U.S. Corps. of Engineers permitting regulations. Any material buried or stockpiled beyond approved construction limits would require additional archaeological investigations unless buried in a previously approved borrow location.
- The Contractor shall be responsible for preserving property irons. The Contractor will be required to re-establish any property irons which are damaged or destroyed by his construction operations. Such irons shall be re-established by a licensed land surveyor in accordance with state law.
- All areas disturbed by construction shall be seeded at 300 lbs./acre with Rya Grass immediately following construction in that area. Contractor shall prepare ground per City specifications.
- All disturbed areas shall be seeded and mulched as follows:  
SEED--Kansas Premium Fescue Blend--8#/1000 Sq. Ft. (Equal parts of Olympic II, Bonanza, Apache, and Monarch Fescue Varieties)  
FERTILIZER--16-20-6 Ratio--4#/1000 Sq. Ft. or approved equal.  
MULCH--2 Tons of Prairie Hay per Acre.

### Sheet Index

Plan Sheet	1
Type 2 Inlet Detail	2

### Benchmarks

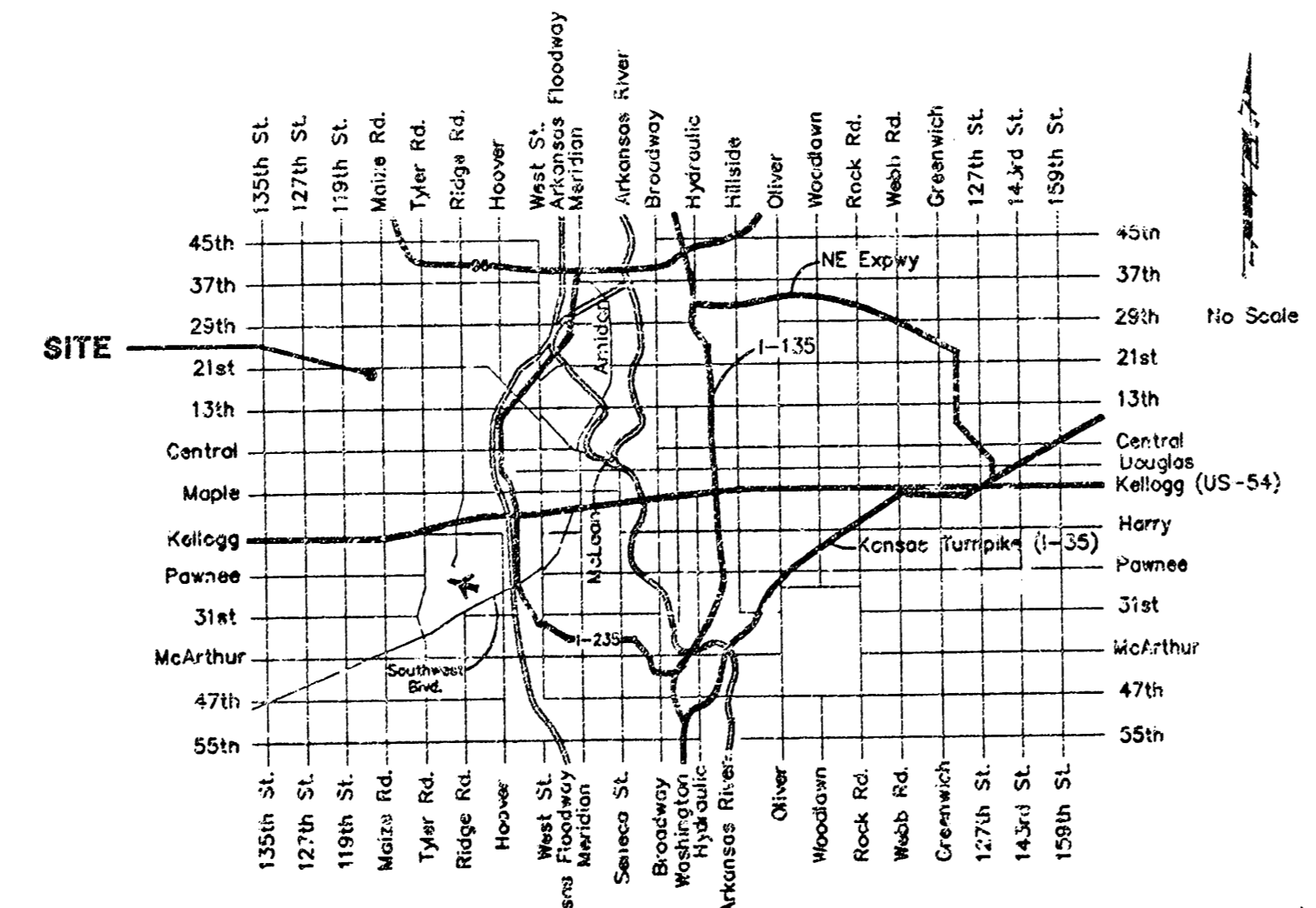
"□" Cut in Top of Catch Basin on South Side of 21st Street North and Adjacent to Lot 2, Pearson Farms 3rd Addition.  
Elev. = 163.41 (City Datum)

APPROVED AS NOTED  
BY CITY ENGINEER OF WICHITA

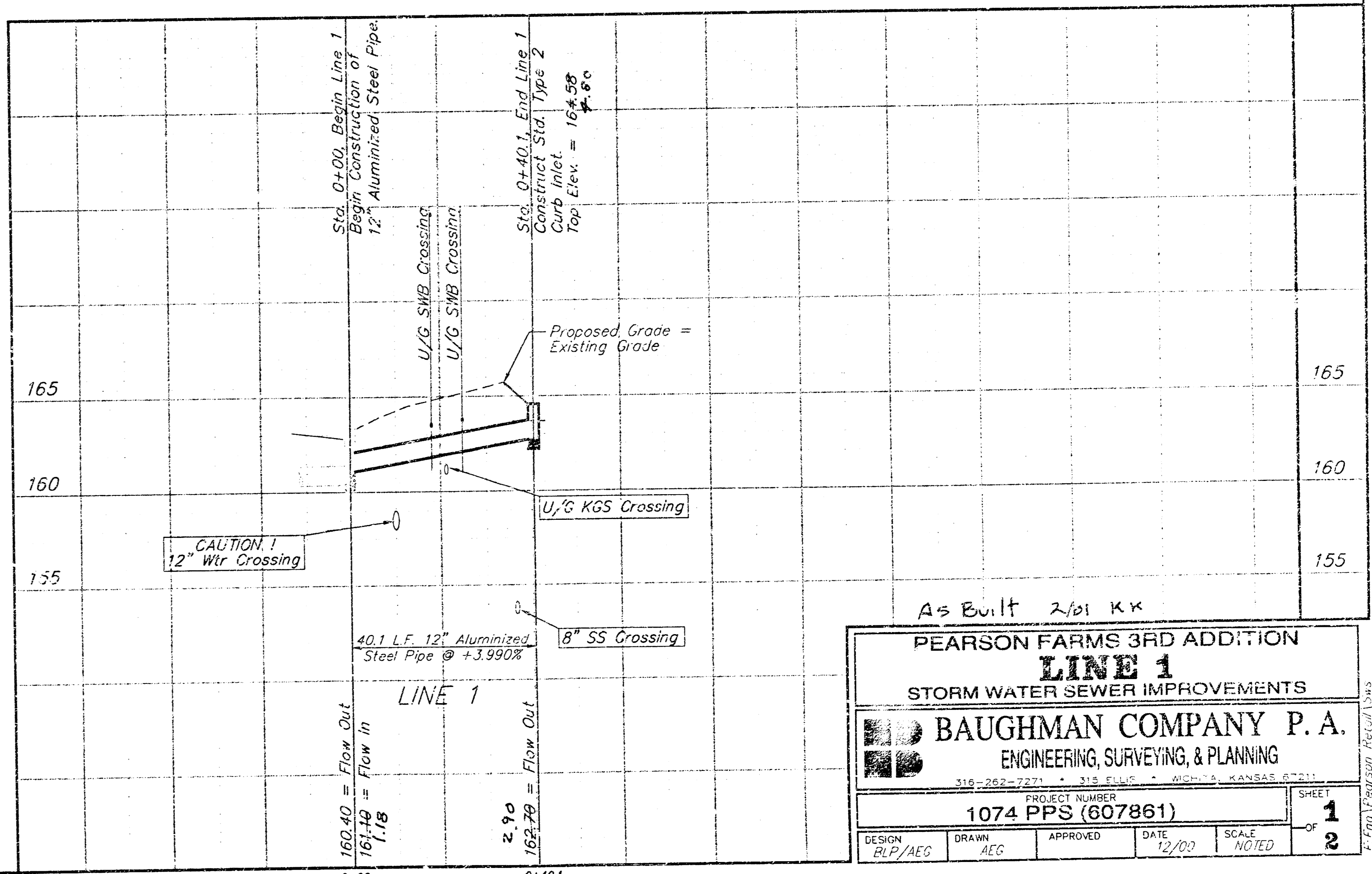
Storm Sewers URH 12/14/00

NOTE TO CONTRACTORS

Installation, inspection and testing for this project is to be provided by a Licensed Consulting Engineering Firm under contract with the Owner/Developer. Said inspection to be in accordance with the City of Wichita standard construction engineering practices and certified by a Licensed Professional Engineer. No work shall be performed in dedicated easements or public right-of-way by the Contractor without such inspection nor shall any work be commenced without written authorization by the City Engineer. All Construction and Materials shall comply with the City of Wichita Specifications and Standards (on file and available in the City Engineer's Office).



Vicinity Map

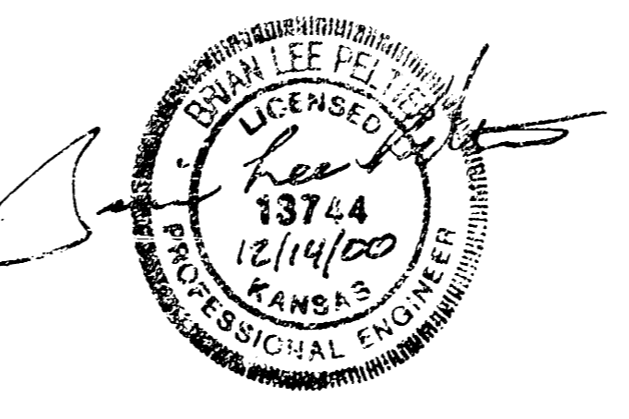


PEARSON FARMS 3RD ADDITION  
**LINE 1**  
STORM WATER SEWER IMPROVEMENTS

**BAUGHMAN COMPANY P. A.**  
ENGINEERING, SURVEYING, & PLANNING

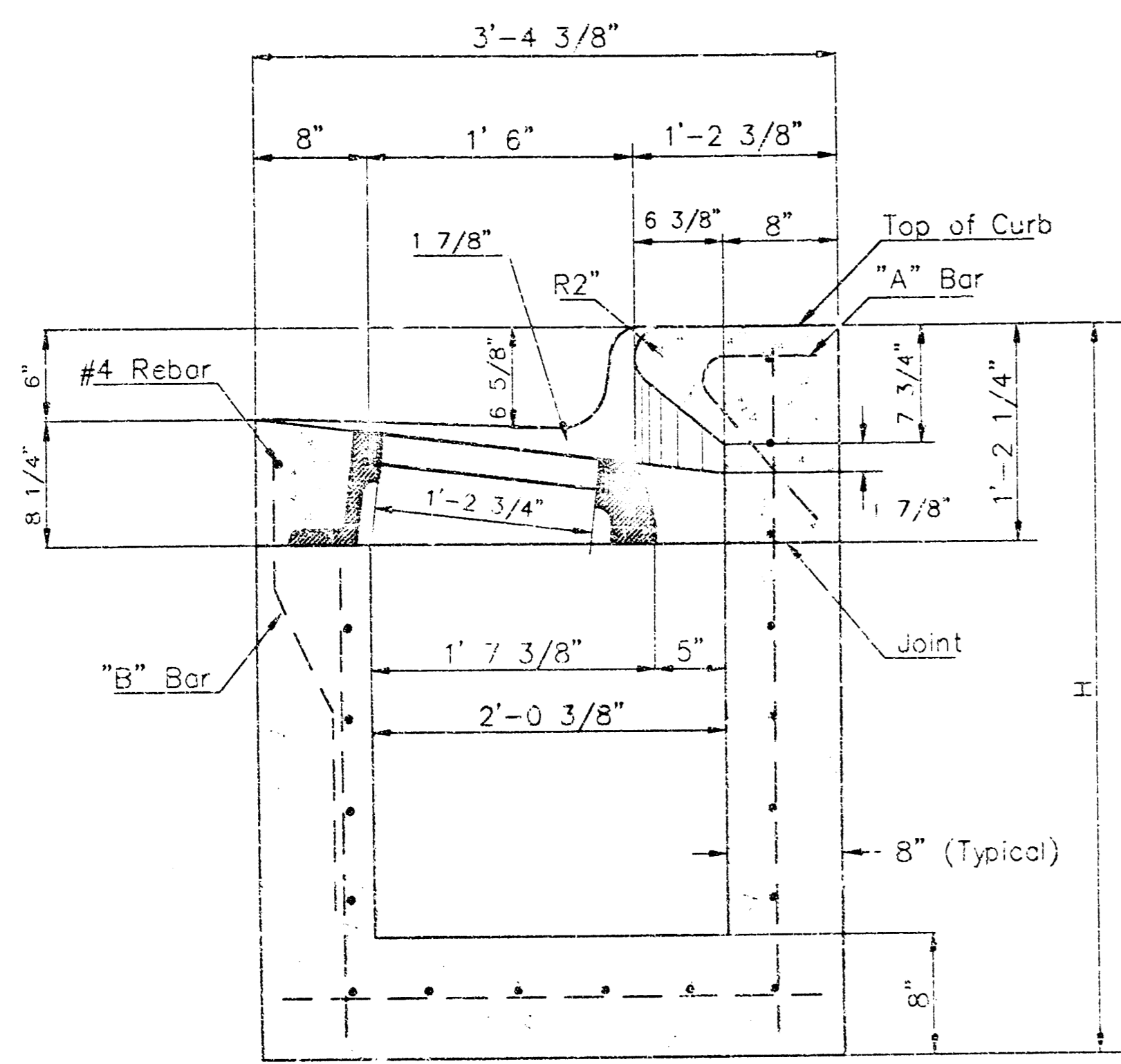
PROJECT NUMBER  
**1074 PPS (607861)**

DESIGN R/P/AEG	DRAWN AEG	APPROVED	DATE 12/00	SCALE NOTED	SHEET 1 OF 2
-------------------	--------------	----------	---------------	----------------	-----------------

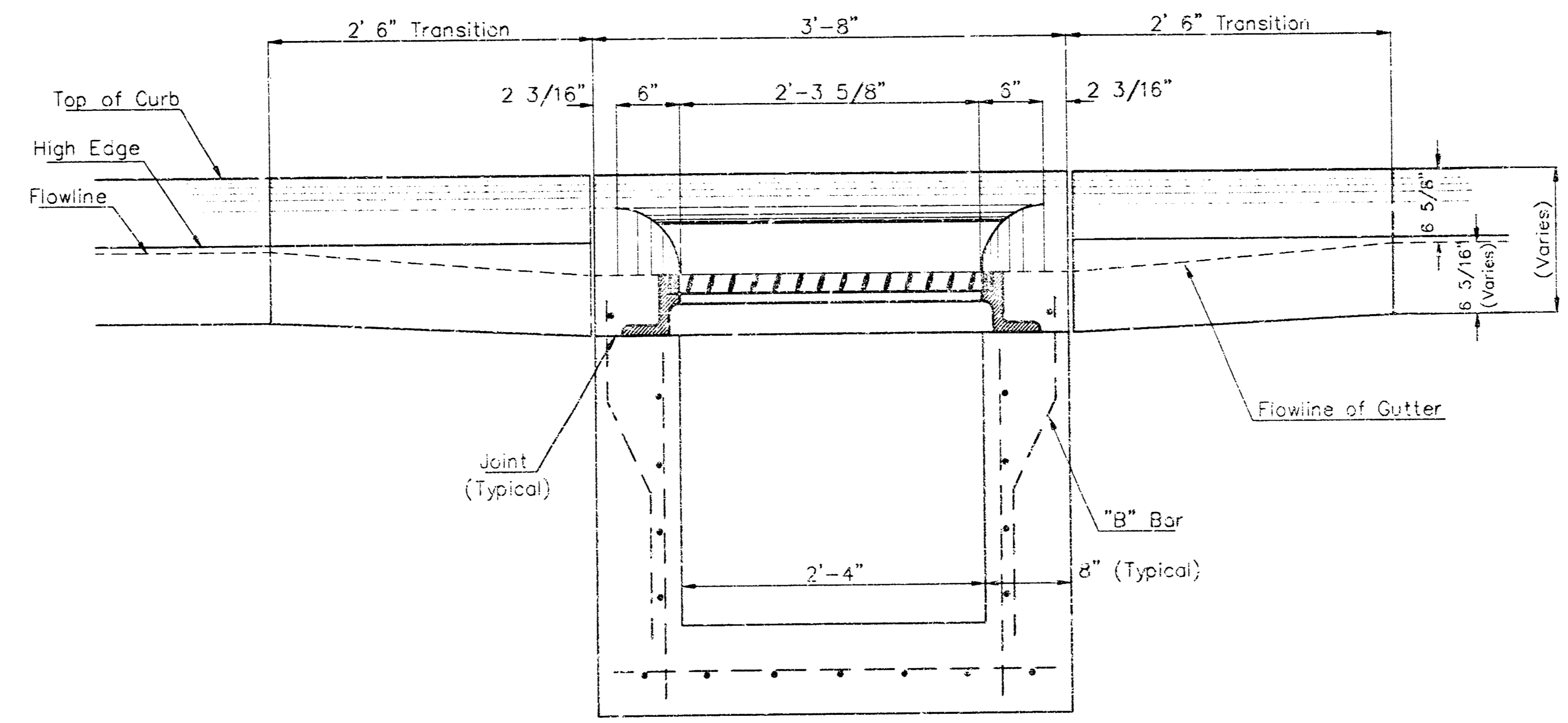


BOOKED  
9-27-01  
M.E.S.  
0-521

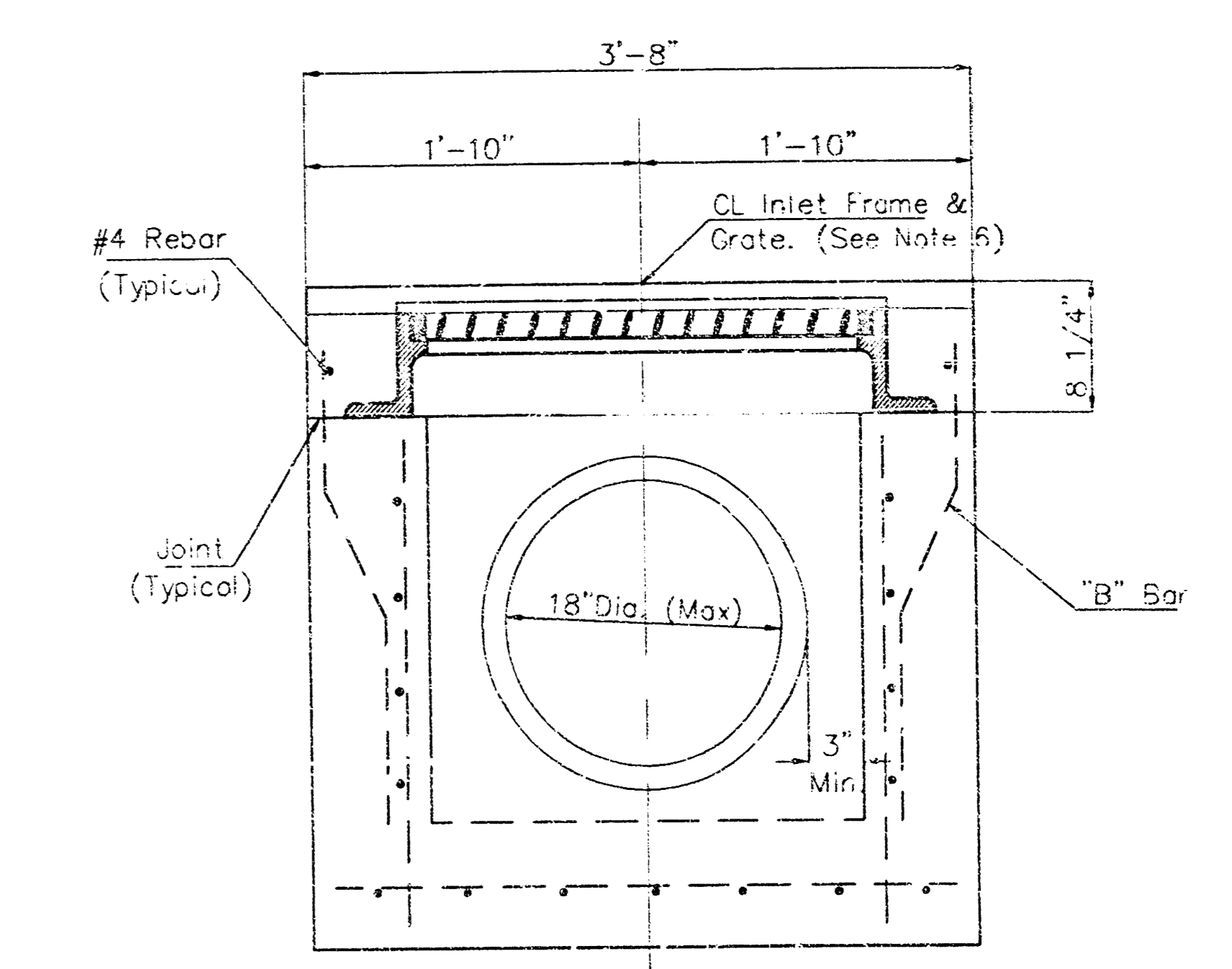
Inlet Floor Shaping Shall be Reconstructed to Allow for Proper Flow Through Manholes.



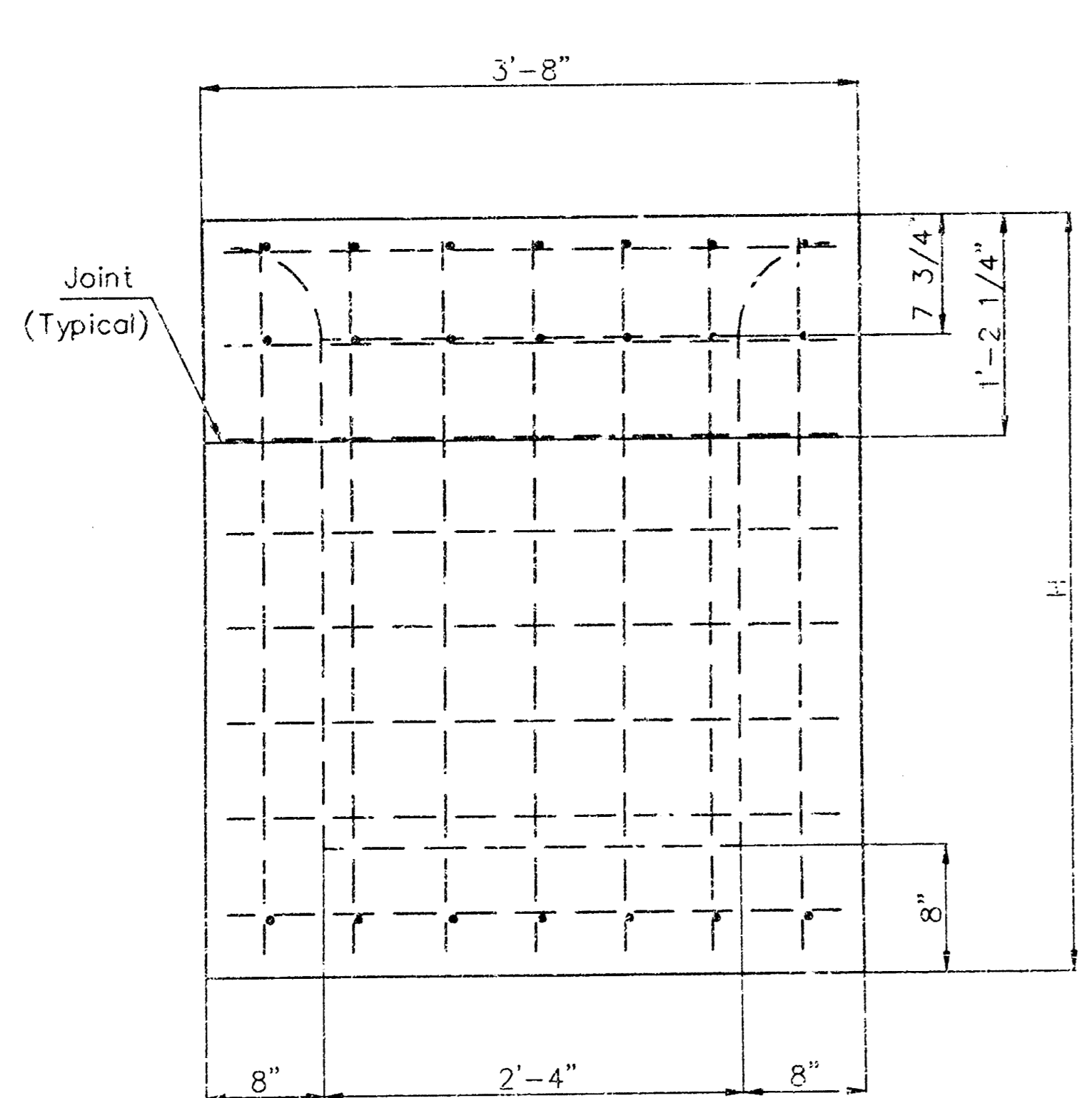
SECTION A-A



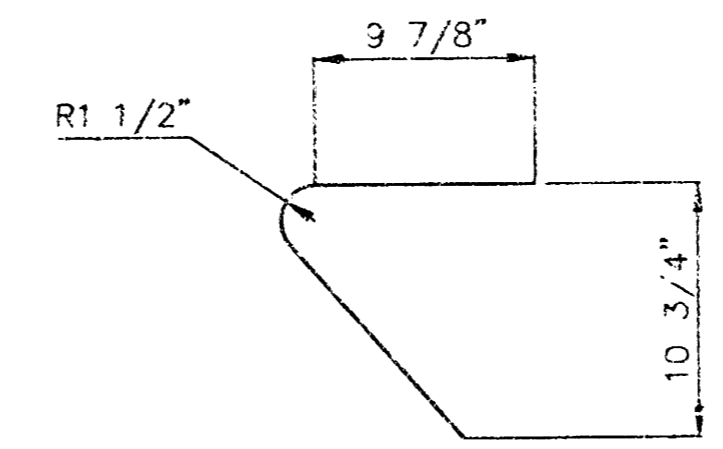
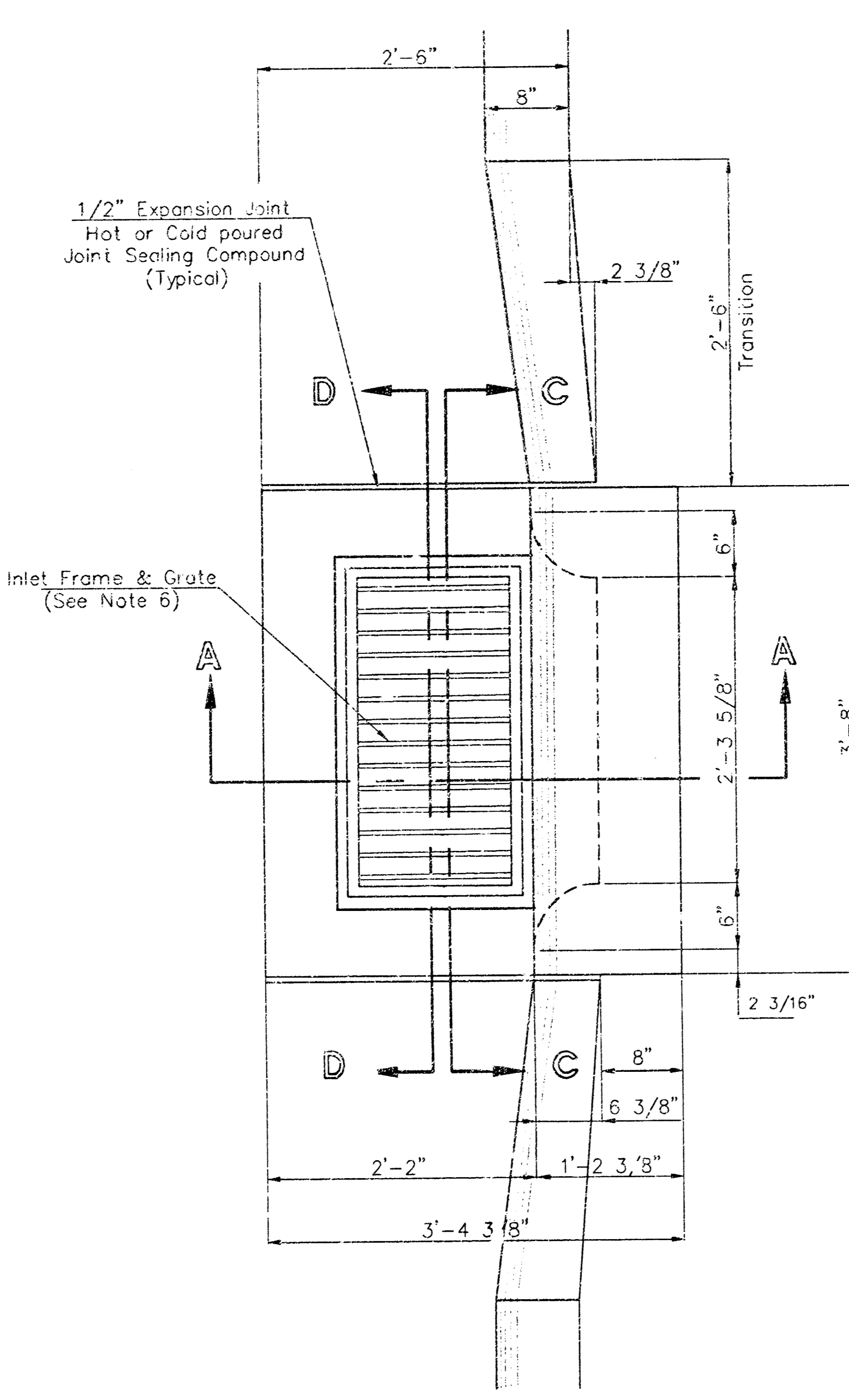
SECTION C-C



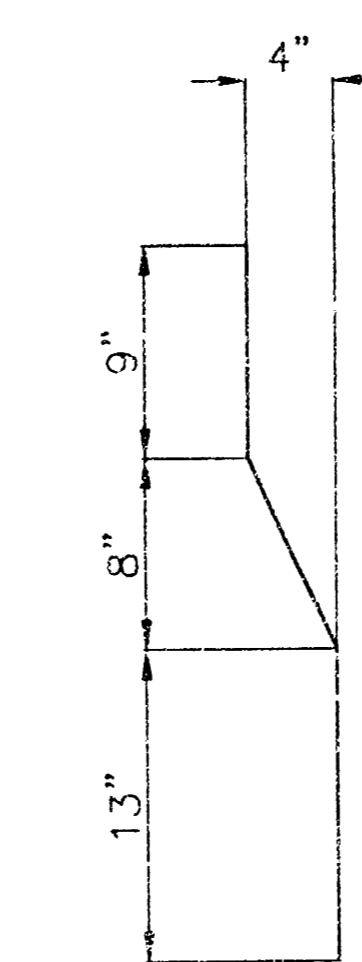
SECTION D-D



REAR WALL



"A" Bar



"B" Bar

General Notes

1. Use the concrete mix specified for the City of Wichita concrete pavement throughout. All exposed edges shall be finished with an edging tool. Reinforcing bars shall be bent around pipe.
2. Inlet invert shall be shaped with 8 sack mix concrete to create flow channels and to increase hydraulic efficiency such that the inlet will be self cleaning between all inlet and/or outlet pipes.
3. All bars are #4 with 6" spacing and shall have a minimum clearance of 1 1/2" inches unless otherwise noted on the plans.
4. When directed by the Engineer, a small opening may be required in the back of the inlet in order to drain a low area. Reinforcing bars will extend through the openings. No deductions in concrete quantities will be made for these openings.
5. No deductions will be made in pay length of curb, gutter, or curb and gutter through the inlet area.
6. Use Naenah R-3289 HV Single Inlet Frame and Grate or approved equal. Inlet frame to be proof load tested to 40,000 lbs. on unsupported side.
7. Reinforcing bars shall be cut or bent around pipes. No deduction in concrete quantities shall be made for pipe openings.
8. The vanes of the grate shall be oriented with respect to the flow arrows shown on the plans.

Redrawn Jan. 1992

CITY OF WICHITA				
<b>STD. TYPE II CURB INLET</b>				
INLET OPENINGS - 8'x2'-9 5/8"				
<b>BAUGHMAN COMPANY P.A.</b>				
ENGINEERING, SURVEYING, & PLANNING				
318-282-7271 • 315 ELLIS • WICHITA, KANSAS 67211				
PROJECT NUMBER				SHEET
DESIGN	DRAWN	APPROVED	DATE	SCALE
	1/1997			NONE
				2
				2

10347 055 A2 B041-150809 F1112 351 A171 2 M2