

PRIVATE STORM WATER SEWER PLANS FOR CULLIGAN IN REGENCY PARK ADDITION

AN ADDITION TO THE CITY OF WICHITA
SEDGWICK COUNTY, KANSAS
OCA 607861
PROJECT NO. 1084PPS
MICHAEL E. LINDEBAK, CITY ENGINEER

APPROVED AS NOTED
BY CITY ENGINEER OF WICHITA

STORM SEWERS *VRH 6/7/02*

NOTE TO CONTRACTOR

INSPECTION AND TESTING FOR THIS PROJECT IS TO BE PROVIDED BY A LICENSED CONSULTING ENGINEERING FIRM UNDER CONTRACT WITH THE OWNER/DEVELOPER. SAID INSPECTION TO BE IN ACCORDANCE WITH THE CITY OF WICHITA STANDARD CONSTRUCTION ENGINEERING PRACTICES AND CERTIFIED BY A LICENSED PROFESSIONAL ENGINEER. NO WORK SHALL BE PERFORMED IN DEDICATED EASEMENTS OR THE PUBLIC RIGHT-OF-WAY BY THE CONTRACTOR WITHOUT SUCH INSPECTION NOR SHALL ANY WORK BE COMMENCED IN DEDICATED EASEMENTS OR PUBLIC RIGHT-OF-WAY WITHOUT WRITTEN AUTHORIZATION BY THE CITY ENGINEER.

GENERAL NOTES

- THE TOPS OF INLETS AS NOTED ON THE PLANS MAY VARY SO AS TO MEET PROVIDED TOP OF CURB ELEVATIONS OR PAVEMENT ELEVATIONS. THE FIELD ENGINEER SHALL LOCATE INLETS WITH REFERENCE TO PROPOSED PAVING PLANS OF THE PERTINENT PAVEMENT.
- ALL CONCRETE SHALL BE STANDARD PAVING C.I.W. MIX UNLESS OTHERWISE NOTED.
- THE CONTRACTOR SHALL BE RESPONSIBLE FOR PRESERVING PROPERTY IRONS. THE CONTRACTOR SHALL BE REQUIRED TO RE-ESTABLISH ANY PROPERTY IRONS WHICH ARE DAMAGED OR DESTROYED BY HIS CONSTRUCTION OPERATIONS. SUCH IRONS SHALL BE RE-ESTABLISHED BY A LICENSED LAND SURVEYOR IN ACCORDANCE WITH STATE LAWS.
- EXISTING UTILITIES AND THEIR LOCATIONS, AS SHOWN ON THE PLANS, REPRESENT THE BEST INFORMATION OBTAINABLE FOR DESIGN. LOCATION INFORMATION HAS BEEN OBTAINED FROM THE VARIOUS COMPANIES AND IS EITHER FROM COMPANY UTILITY DRAWINGS OR COMPANY PROVIDED FIELD LOCATIONS. THE PLAN LOCATIONS SHOWN ARE NOT GUARANTEED. ADDITIONAL EXISTING UTILITIES MAY ALSO BE ENCOUNTERED.
- CONTRACTOR WILL BE REQUIRED TO PROVIDE A MINIMUM ADVANCE NOTICE OF FORTY-EIGHT (48) HOURS TO UTILITY COMPANIES PRIOR TO STARTING ANY EXCAVATION AS FOLLOWS:
KANSAS ONE-CALL 1-800-344-7233
THE CONTRACTOR MUST NOTIFY THE FOLLOWING IN CASE OF AN EMERGENCY:
CABLEVISION 263-2061
ARKLA GAS COMPANY 263-7511
KANSAS GAS & ELECTRIC 264-1141
SOUTH-WEST BELL TELEPHONE COMPANY 571-2611
CITY OF WICHITA WATER & SEWER MAINT. 262-6000
- UNLESS SHOWN OR STATED OTHERWISE ON THESE DRAWINGS, MATERIALS AND CONSTRUCTION SHALL BE IN ACCORDANCE WITH CITY OF WICHITA SPECIFICATIONS.
- EXCESS EXCAVATION WHICH IS TO BE WASTED SHALL BE DISPOSED OF ON SITE TO BE PROVIDED BY THE CONTRACTOR. THESE SITES SHALL BE APPROVED BY THE ENGINEER AS TO SUBSTANTIALLY APPEARANCE AND SITE LOCATION. LOCATIONS THAT, IN THE OPINION OF THE ENGINEER, WILL LEAVE AN UNSIGHTLY APPEARANCE WILL NOT BE APPROVED. ALL DISPOSAL SITES MUST BE APPROVED BY THE KANSAS DEPARTMENT OF HEALTH AND ENVIRONMENT. MATERIAL EITHER STOCKPILED OR DISPOSED OF IN A FLOOD PLAIN WOULD REQUIRE A KANSAS STATE BOARD OF AGRICULTURE PERMIT. ANY MATERIAL DUMPED IN WATERS OF THE UNITED STATES OR WETLANDS IS SUBJECT TO U.S. CORPS OF ENGINEERS PERMITTING REGULATIONS. ANY MATERIAL BURIED OR STOCKPILED BEYOND APPROVED CONSTRUCTION LIMITS WOULD REQUIRE ADDITIONAL ARCHAEOLOGICAL INVESTIGATION UNLESS BURIED IN A PREVIOUSLY APPROVED BORROW LOCATION.
- SITE RESTORATION AND PREPARATION SHALL BE SUBSIDIARY TO THE PROJECT.
- CONTRACTOR SHALL RESEED AND MULCH ALL DISTURBED AREAS. COST SHALL BE CONSIDERED SUBSIDIARY TO SITE RESTORATION.
- SEE SHEET 4 OF 7 FOR EROSION/SEDIMENT CONTROL.

BL. STA. 9+88.24

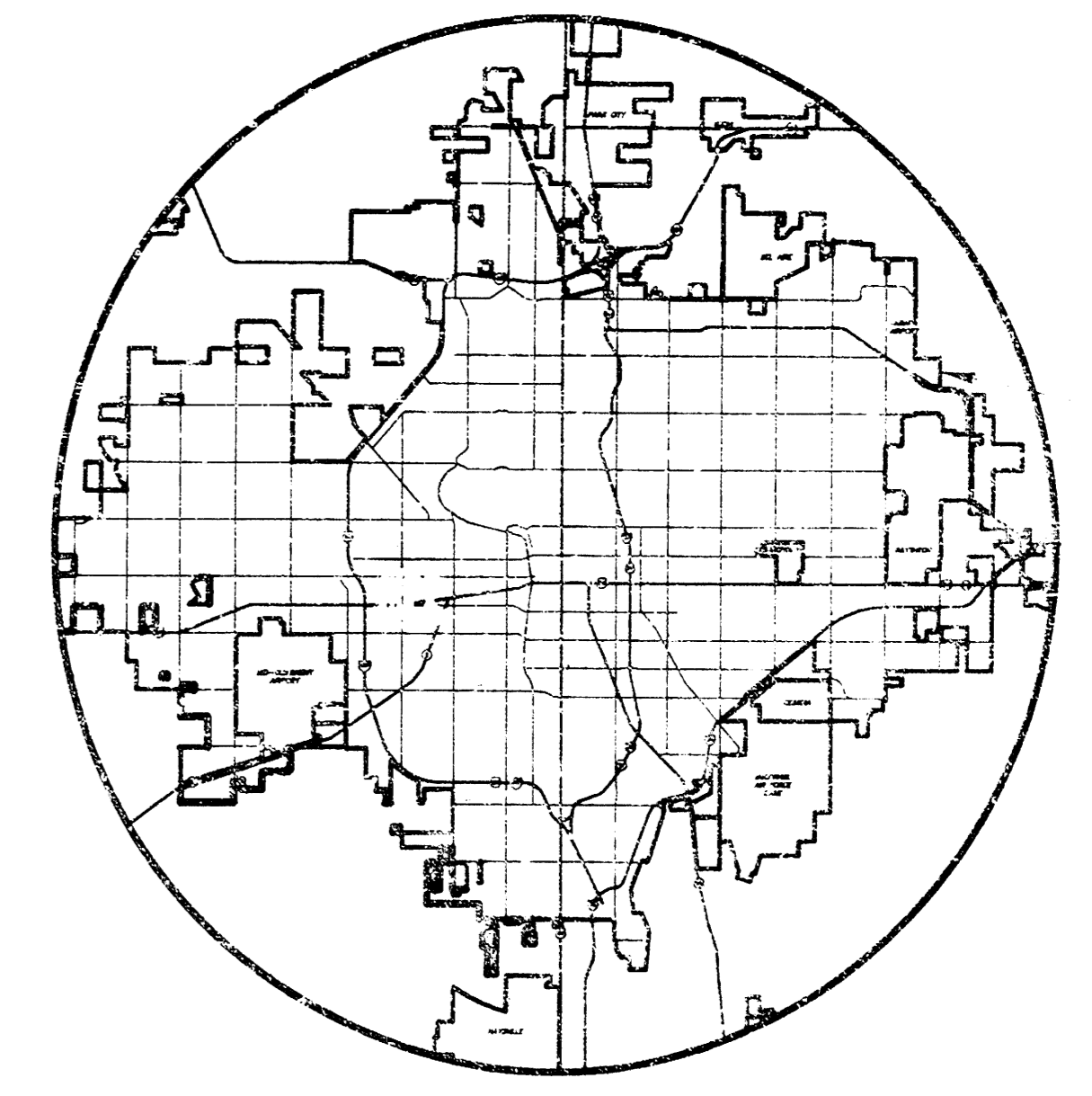
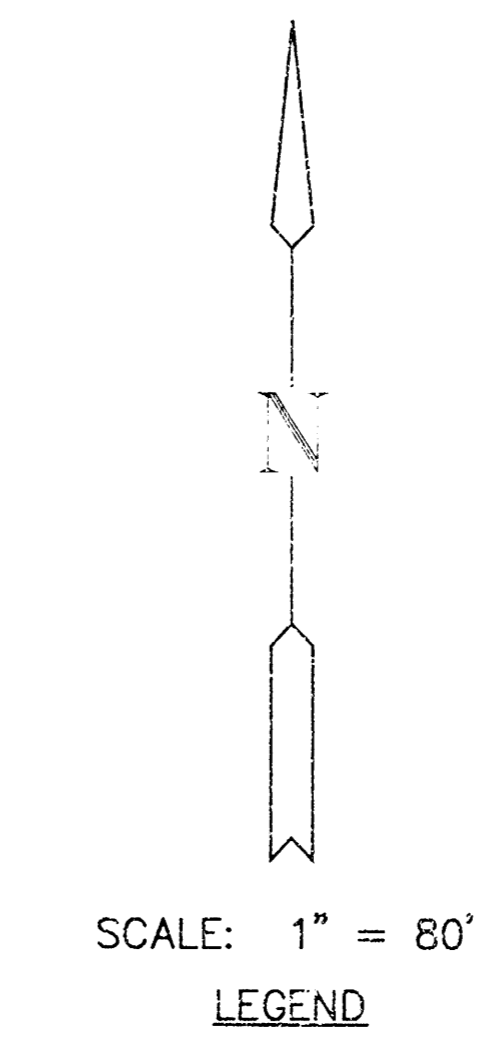
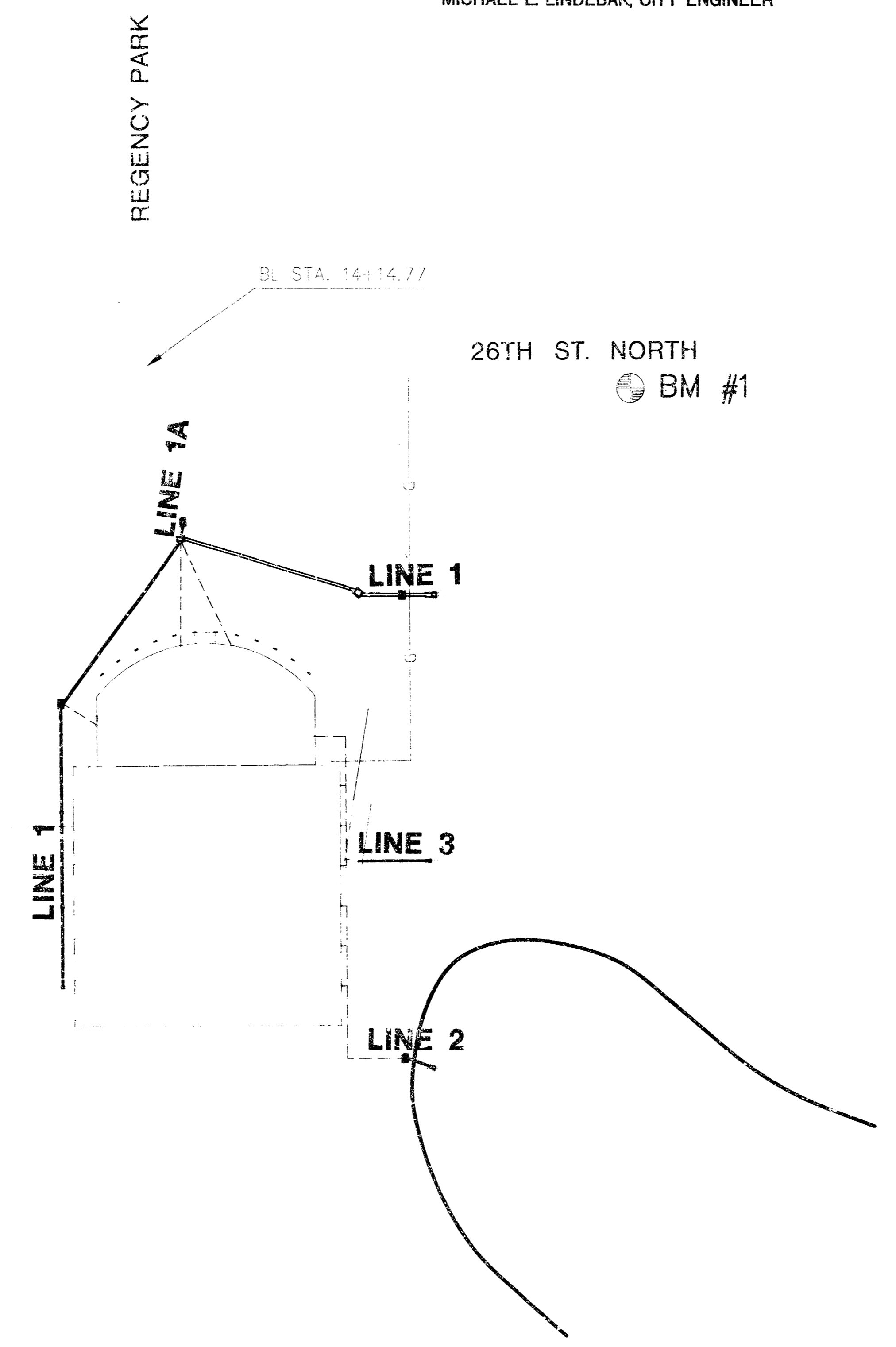
BL. STA. 14+14.77

26TH ST. NORTH
BM #1

29TH ST. NORTH
NORTHEAST CORNER
SEC. 4, T27S, R2E

GREENWICH RD.
BM #2

BL. STA. 27+64.77



LOCATION MAP

*100%
5/20/02
MEL*

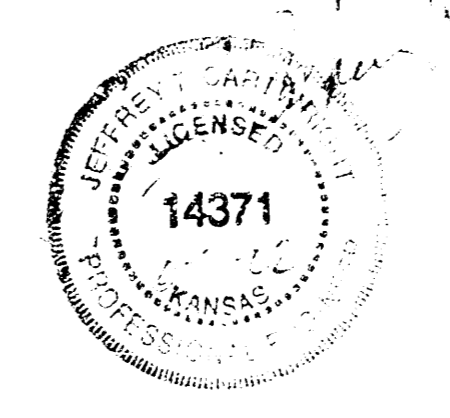
INDEX TO DRAWINGS

SHEET NO.	DESCRIPTION
1	TITLE SHEET
2-4	DETAILS
5	LINE 1, PLAN & PROFILE
6	LINE 1A, 2 & 3 PLAN & PROFILE
7	FINAL PLAT

BENCHMARKS

- BM #1 DISC IN TOP OF CURB NORTH OF 3RD FUR HYDRANT ON 26TH ST. NORTH WEST OF GREENWICH RD. ELEV. = 188.95
- BM #2 BM SET 8'-21" N. WEST SIDE RR, 674' N. NORTH OF 4-38 ON EAST SIDE OF GREENWICH RD. ELEV. = 184.45

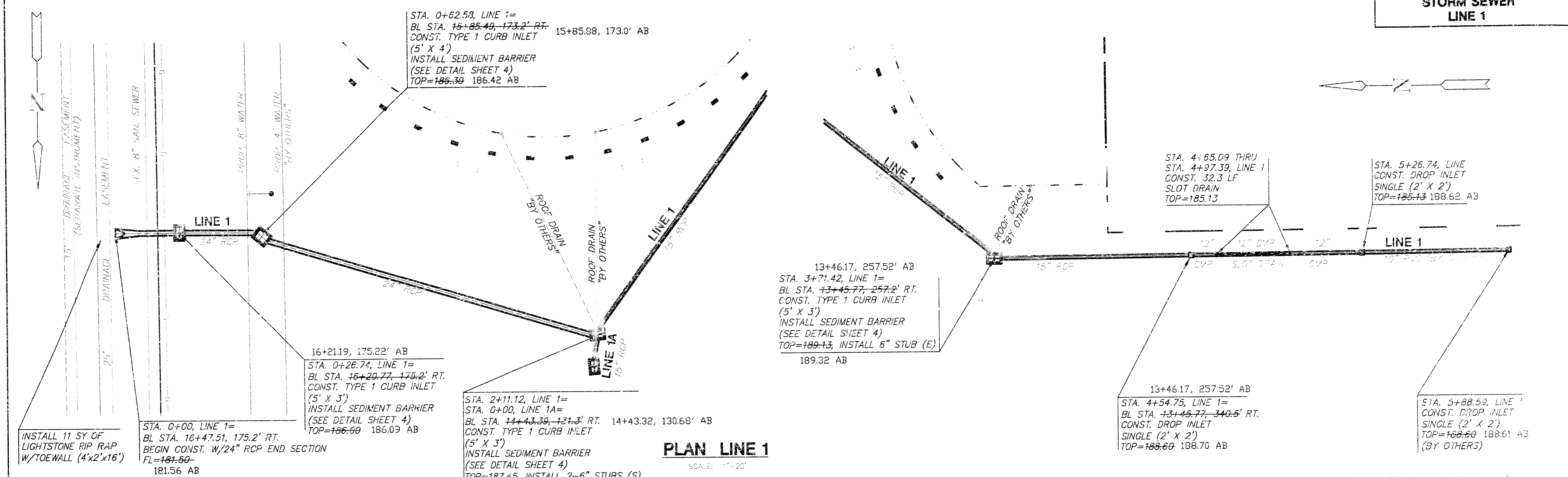
K - 96



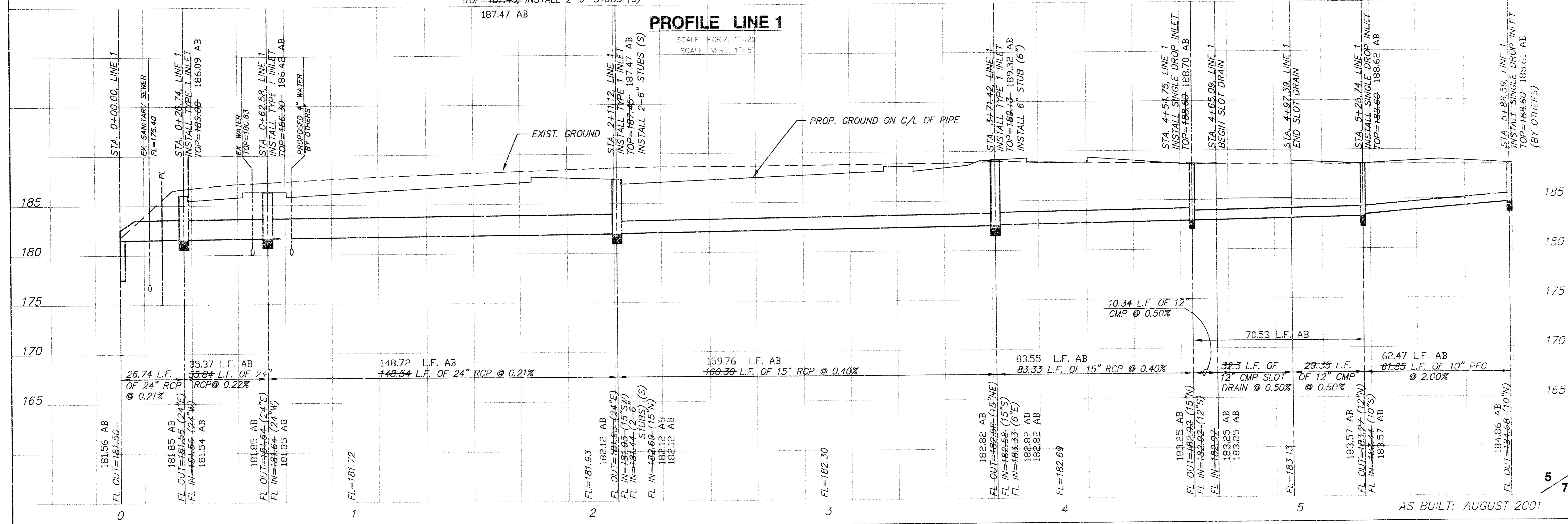
AS BUILT: AUGUST 2001

CULLIGAN @ REGENCY PARK ADDITION PROJECT NAME		
TITLE SHEET SHEET TITLE		
JTC DESIGN BY	DAC DRAWN BY	JTC CHECKED BY
JANUARY 2001 DATE	000297 DRAWING NAME	1 7 SHEET OF

**CULLIGAN • REGENCY PARK
STORM SEWER
LINE 1**



PLAN LINE 1
SCALE: 1"=20'



PROFILE LINE 1
SCALE: HORIZ. 1"=20'
SCALE: VERT. 1"=5'

AS BUILT: AUGUST 2001

**CULLIGAN • REGENCY PARK
STORM SEWER
LINES 1A, 2 & 3**

