

STORM WATER SEWER
to serve
EAST TURNPIKE ENTRANCE 2ND ADDITION

Private Project Number
1092 PPS (607861)

CITY OF WICHITA, KANSAS
Michael E. Lindebak, P.E. City Engineer
MARCH 2001

GENERAL NOTES:

1. Contractor will be required to provide notice to utility companies a minimum of twenty-four (24) hours prior to any excavation, as follows:

Kansas One-Call 687-2470

The Contractor must notify the following in case of an emergency:

Cox Communications, Inc. 262-0661
K.P.L. Gas Service Company 383-8650
Kansas Gas & Electric Company 383-8600
Peoples Gas Company 342-8350
Southwestern Bell Telephone Company 1-571-2611
City of Wichita Water Dept. 268-4908
City of Wichita Traffic Engineering 269-4446

2. Underground utility service lines and overhead utility pole lines are to be adjusted as necessary by others prior to construction unless the plans specifically call for their adjustment by the Contractor or unless the plans specifically identify a utility to be adjusted by its owner during construction. Existing utilities and their location, as shown on the plans, represent the best information obtainable for design. The Contractor will be required to work around existing utilities within the right-of-way which do not conflict with proposed construction.

3. The Contractor shall be responsible for preserving property irons. The Contractor will be required to re-establish any property irons which are damaged or destroyed by his construction operations. Such irons shall be re-established by a licensed land surveyor in accordance with state laws.

4. All areas disturbed by construction shall be seeded, mulched and fertilized as follows:

SEED--
200 lbs./ac. of Rye grass and 400 lbs./ac. of K-31 Fescue.
All Seed Shall Be Drilled.
FERTILIZER--
10-20-10 ratio or 12-24-12 ratio - 350 lbs./ac.
MULCH--
2 TONS PRAIRIE HAY / ACRE

5. Trees and shrubs in public right-of-way which are in direct conflict with proposed new construction shall be removed by the Contractor with the Engineer's approval. Trees and shrubs which are not in direct conflict with proposed new construction shall be saved and protected from damage.

6. The Contractor shall not start work on the project until the project inspector is assigned to the project and is present on the site. Any work done without inspection will be required to be uncovered for inspection.

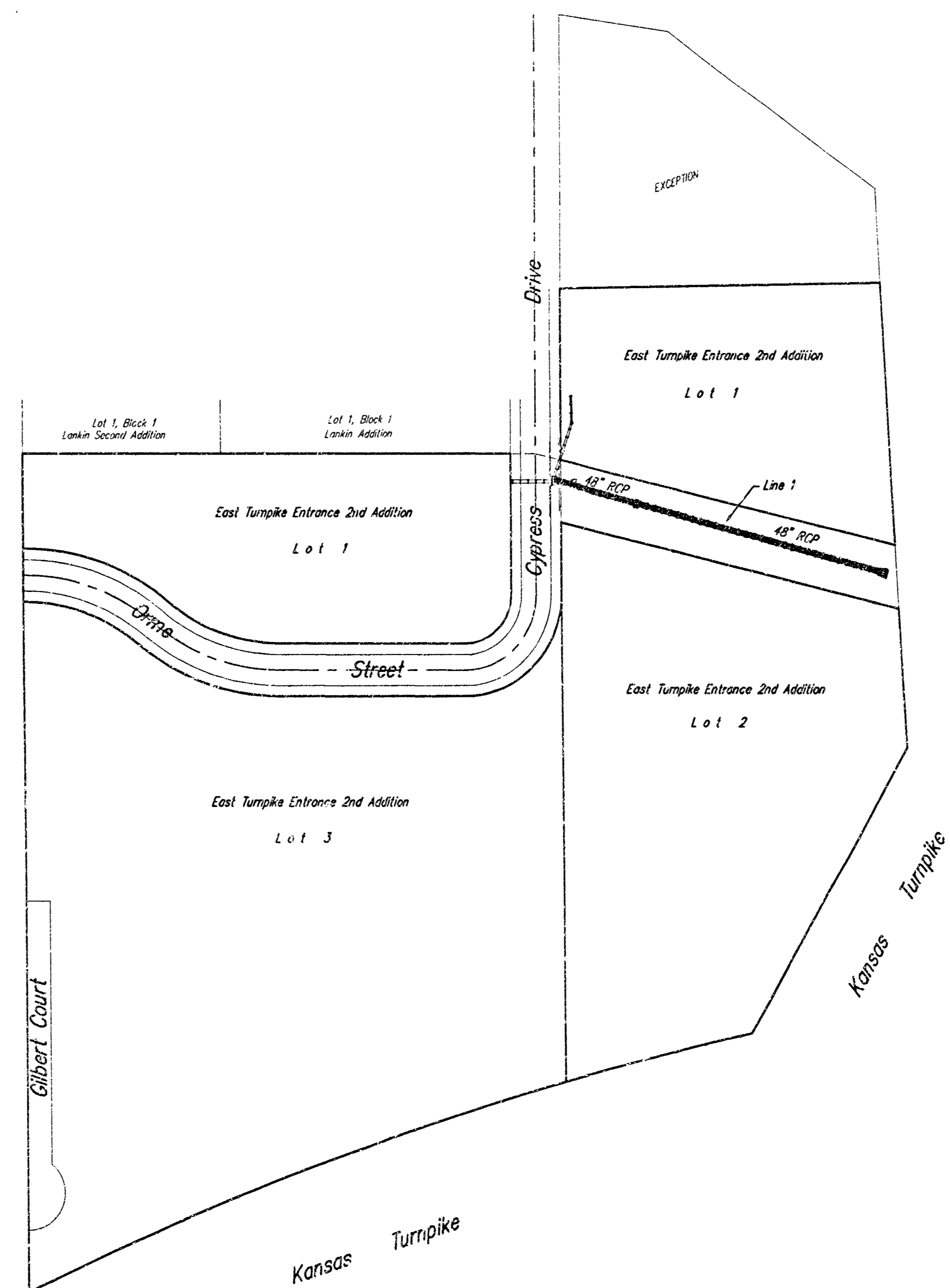
7. Rubble from the removal of miscellaneous structures and excess excavation which is to be wasted shall be disposed of on sites to be provided by the Contractor. These sites shall be approved by the Engineer as to suitability, appearance and site location. Locations that, in the opinion of the Engineer, will leave an unsightly appearance will not be approved. All disposal sites must be approved by the Kansas Department of Health and Environment.

BENCHMARKS:

"□" On Top of Curb, 66.86' S. & 17.65' W. of the N.W. Corner Lot 1, East Turnpike Entrance Addition. Elev. = 153.23

INDEX:

Title Sheet 1
Plan/Profile 2
Headwall Detail 3
Reinforced Conc. MH w/Inlet Grate 4
Copy of Plat 5



APPROVED AS NOTED
BY CITY ENGINEER OF WICHITA

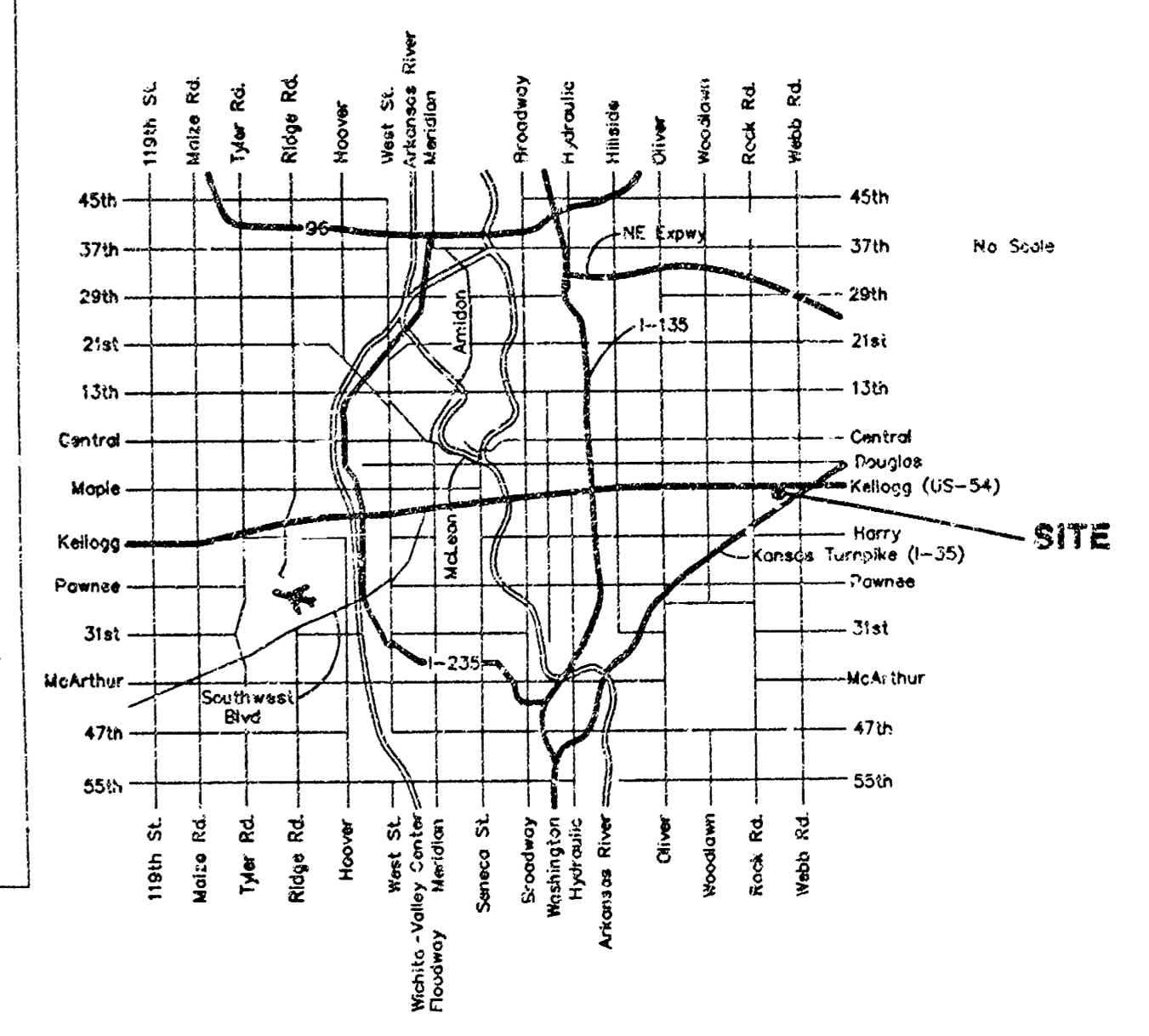
Storm Sewers - VRH 3/8/01

NOTE TO CONTRACTORS

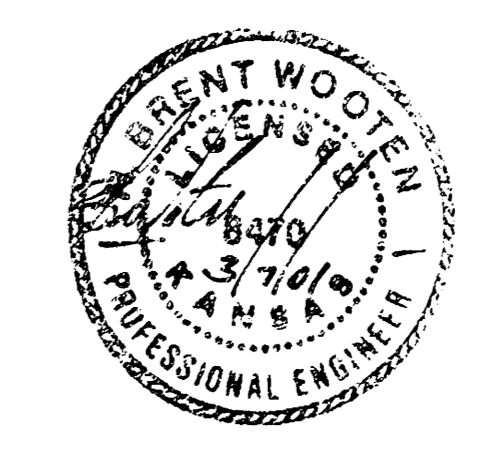
Installation, inspection and testing for this project is to be provided by a Licensed Consulting Engineering Firm under contract with the Owner/Developer. Said inspection to be in accordance with the City of Wichita standard construction engineering practices and certified by a Licensed Professional Engineer. No work shall be performed in dedicated easements or public right-of-way by the Contractor without such inspection nor shall any work be commenced without written authorization by the City Engineer. All Construction and Materials shall comply with the City of Wichita Specifications and Standards (on file and available in the City Engineer's Office).



BOOKED
9-25-01
MCG
D-519



Vicinity Map

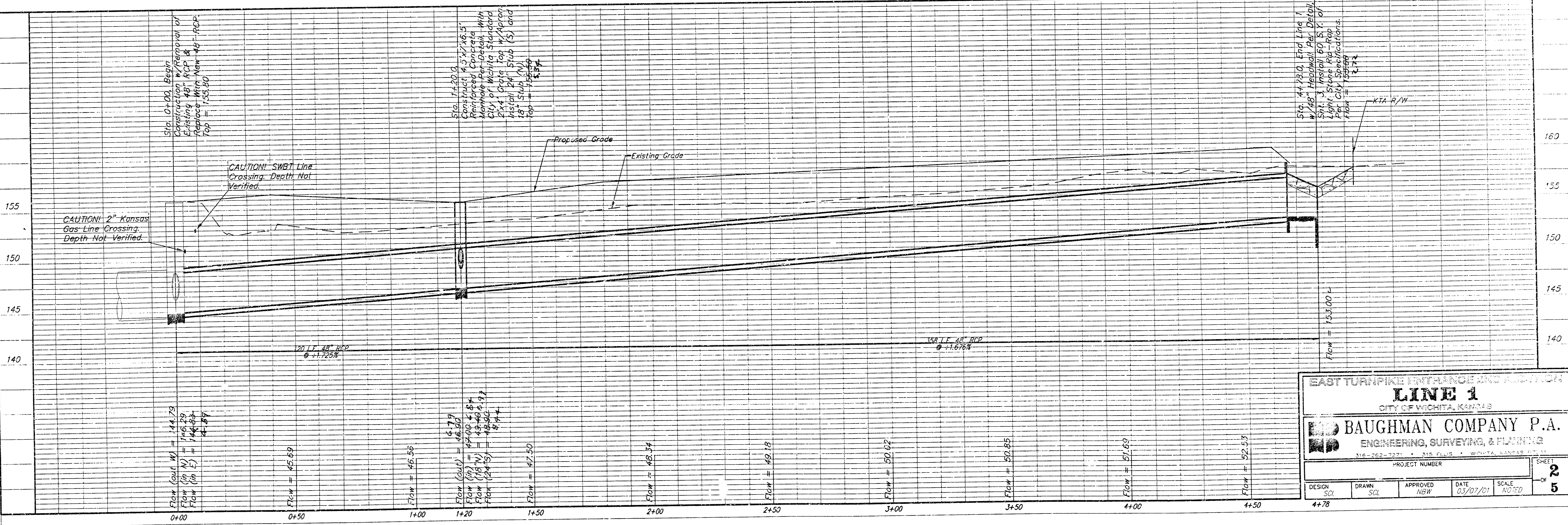
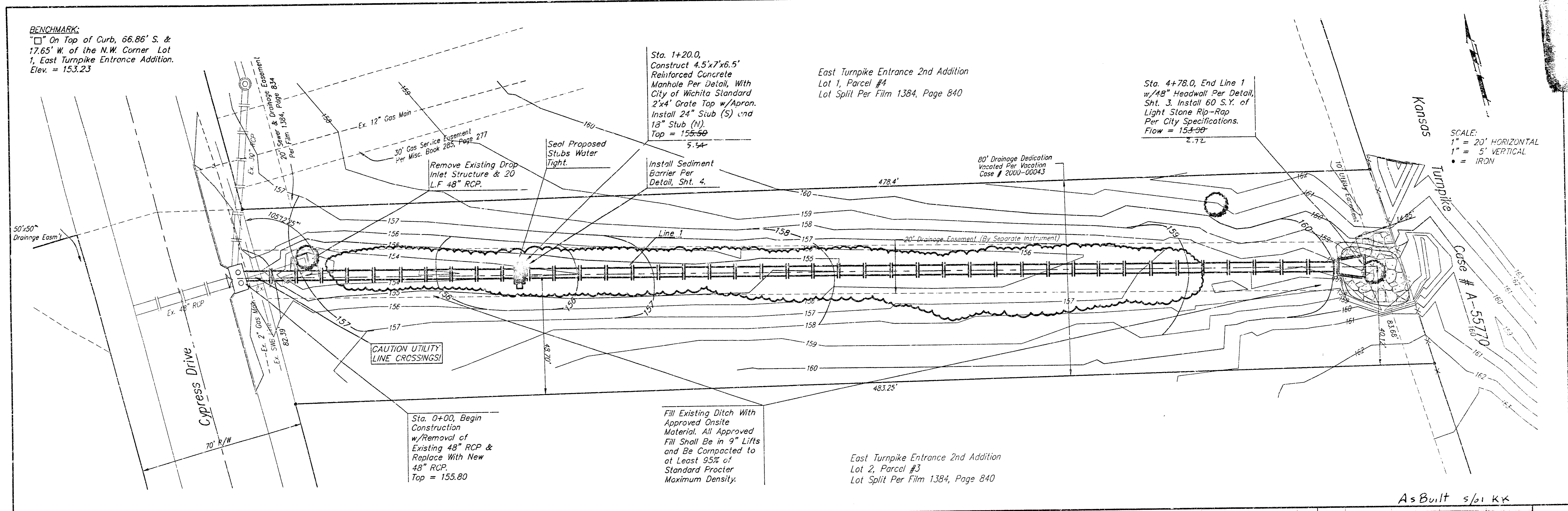


AsBuilt - 5/01 KK

07 MARCH 2001

BAUGHMAN COMPANY P.A.
ENGINEERING, SURVEYING, & PLANNING
316-692-3271 316-692-3271 WICHITA, KANSAS 67214
F:\ENG\TURNPIKE\SHW5001.DWG

BENCHMARK:
 □ On Top of Curb, 66.86' S. &
 17.65' W. of the N.W. Corner Lot
 1, East Turnpike Entrance Addition.
 Elev. = 153.23



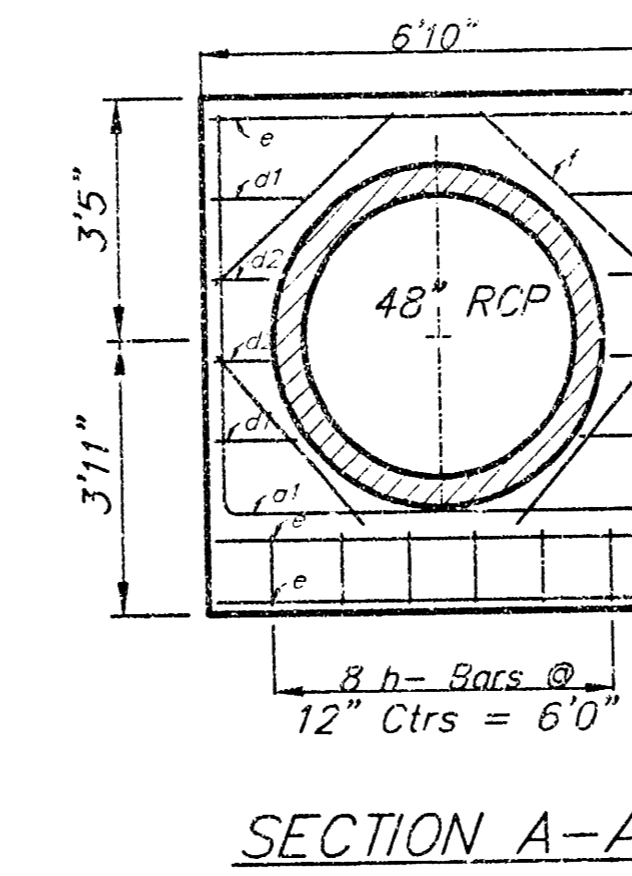
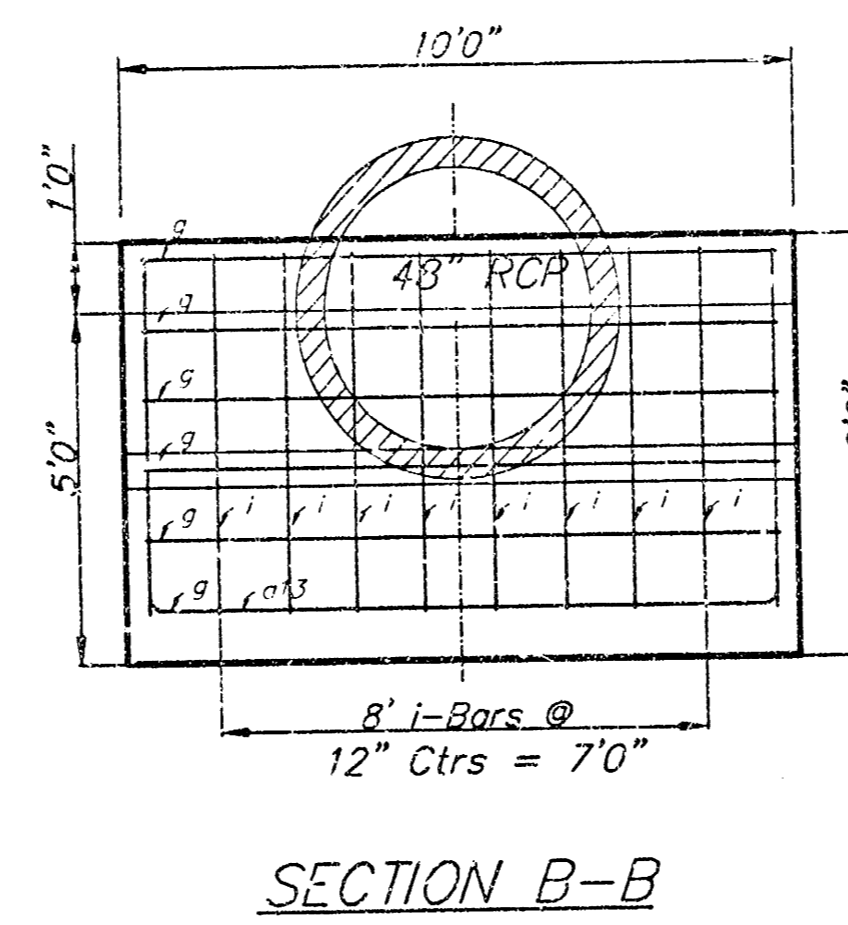
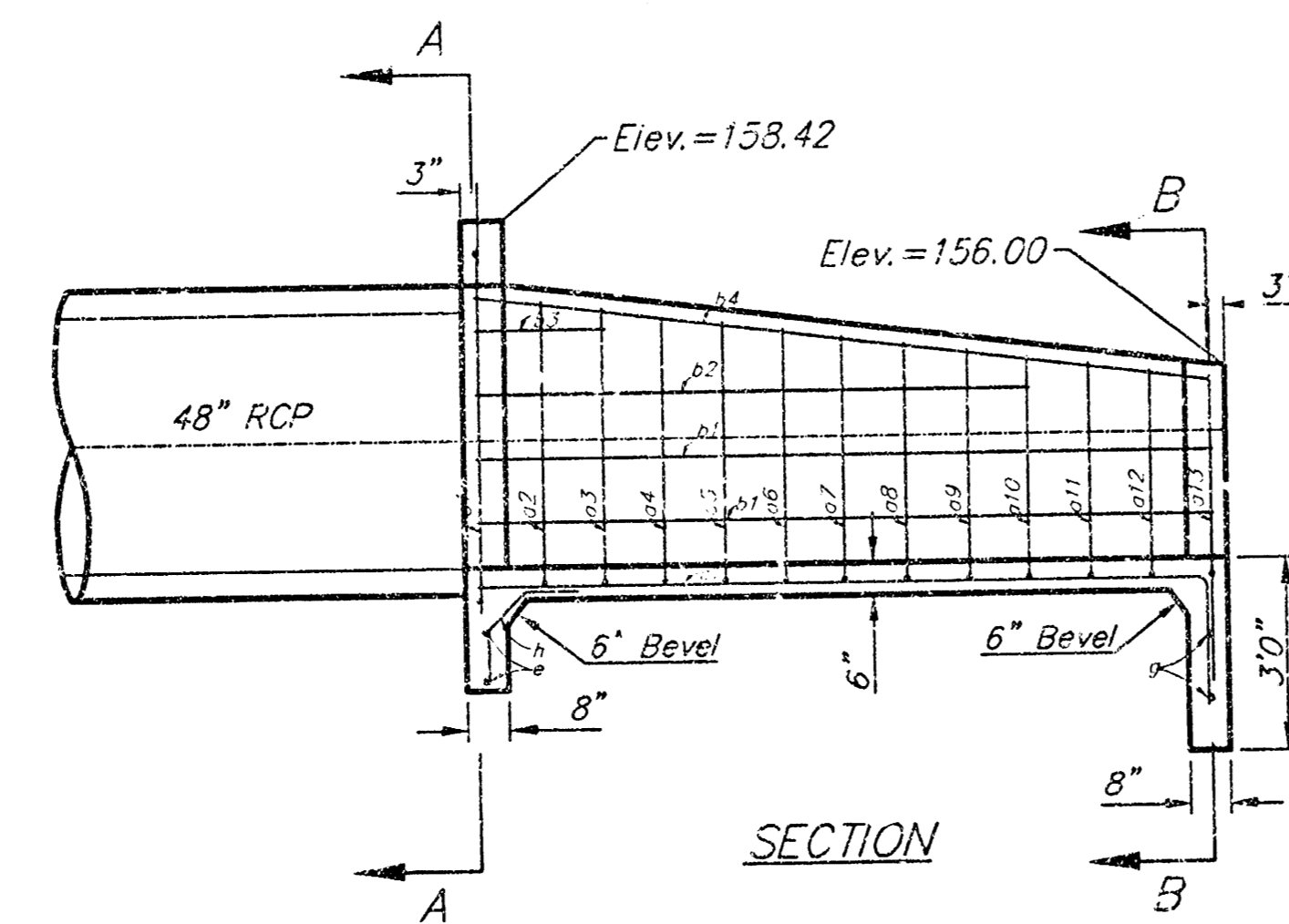
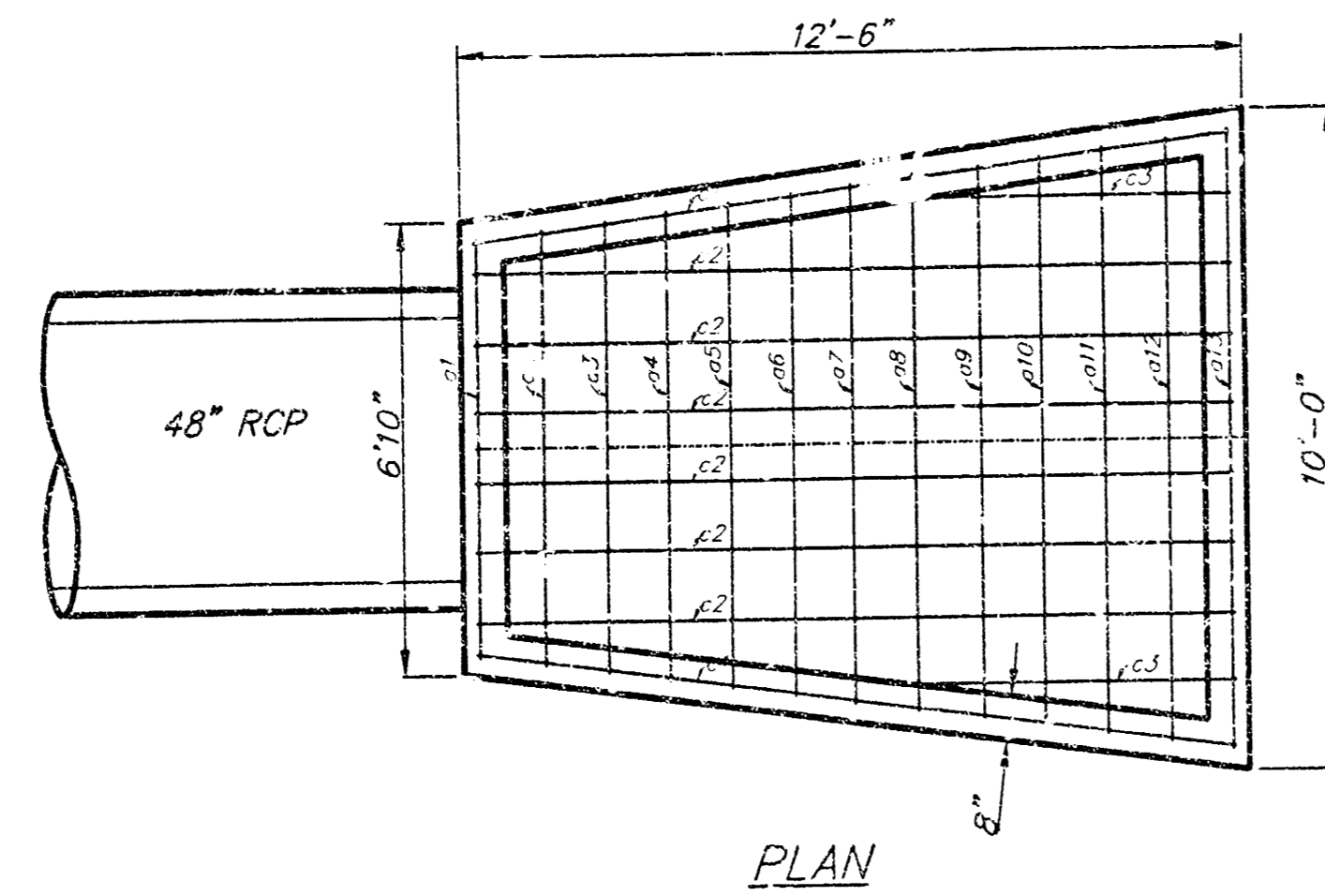
EAST TURNPIKE ENTRANCE AND ADDITION
LINE 1
 CITY OF WICHITA, KANSAS

BAUGHMAN COMPANY P.A.
 ENGINEERING, SURVEYING, & PLANNING
 316-262-7271 • 315 PLUS • WICHITA, KANSAS 67201

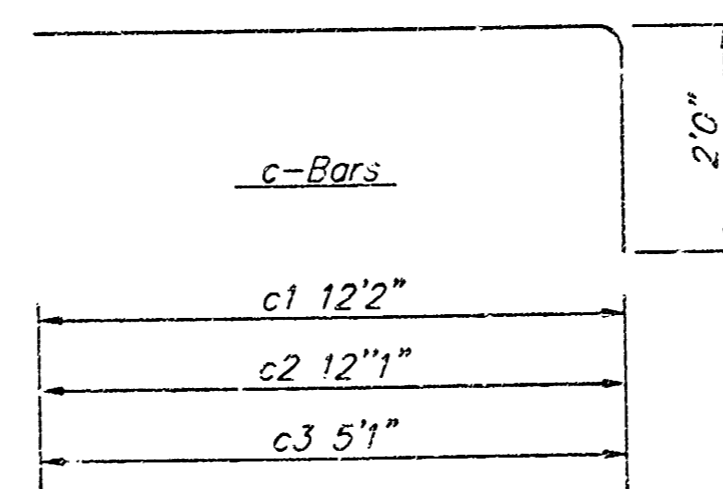
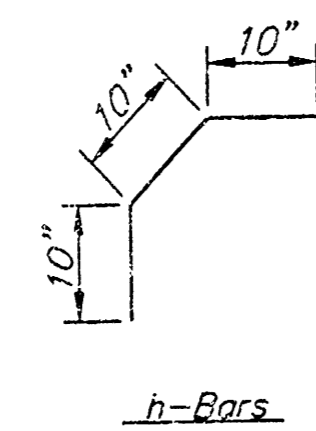
PROJECT NUMBER: _____ SHEET: **2** OF **5**

DESIGN: SCL DRAWN: SCL APPROVED: NBW DATE: 03/07/07 SCALE: NO. 10

HEADWALL FOR 48" RCP W/3' SOIL SAVER



a-Bars	b-Bars
a1 6'4"	b1 5'0"
a2 6'7"	b2 4'5"
a3 6'10"	b3 4'3"
a4 7'1"	b4 4'7"
a5 7'4"	b5 4'0"
a6 7'7"	b6 3'11"
a7 7'10"	b7 3'10"
a8 8'1"	b8 3'8"
a9 8'4"	b9 3'7"
a10 8'7"	b10 3'5"
a11 8'10"	b11 3'4"
a12 9'1"	b12 3'2"
a13 9'4"	b13 2'8"



REBAR SCHEDULE

Bar	Shape	No.	Length	Weight
a1	[]	1	18'4"	12.25
a2	[]	1	17'7"	11.75
a3	[]	1	17'11"	11.97
a4	[]	1	18'3"	12.19
a5	[]	1	18'8"	12.47
a6	[]	1	19'1"	12.75
a7	[]	1	19'6"	13.03
a8	[]	1	19'10"	13.25
a9	[]	1	20'3"	13.53
a10	[]	1	20'7"	13.75
a11	[]	1	21'0"	14.03
a12	[]	1	21'4"	14.25
a13	[]	1	23'4"	15.59
b1	[]	4	12'1"	32.29
b2	[]	2	9'1"	12.14
b3	[]	2	2'1"	2.78
b4	[]	2	12'2"	16.25
c1	[]	2	14'2"	18.93
c2	[]	6	14'1"	56.45
c3	[]	2	7'1"	9.46
d1	[]	4	1'5"	3.79
d2	[]	4	9"	2.00
e	[]	3	6'5"	12.86
f	[]	4	3'4"	8.91
g	[]	6	9'6"	38.08
h	[]	6	2'6"	6.68
i	[]	8	5'2"	27.61
Total Rebar			419.00 Lbs.	
Concrete			18.0± C.Y.	

A Deduction in Concrete Quantities Has Been Made for Pipe Openings Through the Headwall
 • Field Bend or Cut Reinforcing as Required for Clearance.
 All Concrete Reinforcement to be #4 Rebar
 All Rebar to Have Min. of 1 1/2" Conc. Cover

- GENERAL NOTES
- ALL PIPES SHALL BE FLUSH CUT PRIOR TO BEING CAST INTO CONCRETE HEADWALL
 - CONCRETE USED IN HEADWALL CONSTRUCTION SHALL BE SAME AS PER CITY STANDARD PAVING MIX EXCEPT THAT IT SHALL HAVE A MINIMUM 28 DAY COMPRESSIVE STRENGTH OF 4000 PSI.
 - ALL EXPOSED EDGES SHALL BE BEVELED 1/2"
 - REINFORCING STEEL SHALL COMPLY TO A S.T.M. DESIGNATION #615 GRADE 60. ALL DIMENSIONS RELATIVE TO REINFORCING STEEL ARE TO CENTERLINE OF BAR UNLESS OTHERWISE NOTED.
 - THE "REIN. CONC. HEADWALL" SHALL BE PAID FOR AT THE UNIT PRICE BID PER EACH IN PLACE WHICH SHALL INCLUDE ALL LABOR, MATERIALS, EXCAVATION, CONCRETE, REINFORCING STEEL AND ALL OTHER INCIDENTAL ITEMS NECESSARY TO COMPLETE THE WORK. MATERIAL QUANTITIES SHOWN ARE FOR INFORMATION ONLY.

HEADWALL DETAIL

BAUGHMAN COMPANY P.A.
 ENGINEERING, SURVEYING, & PLANNING
 310-262-7271 • 310 ELLIS • WASHINGTON, D.C. 20001

PROJECT NUMBER: _____

DESIGN: [] DRAWN: [] APPROVED: [] DATE: [] SCALE: []

SHEET 3 OF 5

NOTES:

Surface of grate must be clean and free of dirt and debris.

Position Verti-Pro squarely on the inlet grate.

Install toggle bolt assembly (See Figure 2), the hold down plate must contact both the lower frame flange and grate. The toggle bolt must engage two bars on grate. Repeat on opposite sides.

The Verti-Pro has four (4) legs that unfold just like a card table (See Figure 3). Rotate legs to upright position on diagonal corners, this will support the upper framework on the Verti-Pro.

Align holes in each leg with the two (2) holes in upper frame. Insert a plastic retainer (or equal) in each of the holes from the outside in.

MAINTENANCE:

Inspect after each rain event. Remove debris and captured sediment when deposits reach 7" or 1/2 the height of the Verti-Pro. Remove captured debris from the filter fabric with a stiff bristle brush. (Frames are reusable and easy to install).

ORDERING:

ALPINE STORMWATER MANAGEMENT COMPANY
4127 Broadway, Suite B
Grove City, Ohio 43123
Phone: 888-539-8240, Don Strawser, Sr., President

FIGURE 2

FIGURE 3

Verti-Pro
Crating
See Figure 2

Frame can be made to any inlet size.

Verti-Pro box frame

Filter Fabric

Drop Inlet

DROP INLET PROTECTION – The 'Verti-Pro' by Alpine™
For Yard and Parking Lot Inlet Usage

City Of Wichita Std. 2'x4' Grate Inlet

29-1/4"

24-3/4"

3"

9"

22" Min.

2" Cir. Typ.

3"

1.5"

1.5"

1.6" Typ.

4.5'

Varies

6.5'

1' 1 1/2" Typ.

Brick Adjustment (No. 1 Common Brick)

Note: Concrete apron shall be constructed around the inlet when inlet is located in an unpaved area. Where the inlet is adjacent to pavement, the pavement thickness shall be tapered to the inlet in 9 inches as indicated on the detail.

#4 Bars @ 9" Ctrs. Both Ways Top and Bottom Of Slab.

#4 Bent Bars @ 9" Ctrs. Typical Outside Corners Only.

#4 Bars @ 9" Ctrs. Both Ways At Inside and Outside Face of Wall. Cut Bars @ Pipe as Necessary.

#4 Diagonal Bars @ Each Face Around Each Pipe and Barrel Opening. Typical.

6 Sack City Paving Mix

Shape Bottom, 8 Sack Sand Mix

#4 Bent Bars @ 9" Ctrs. At Inside and Outside Face.

#4 Bars @ 5" Ctrs. Both Ways Top and Bottom of Floor Slab.

REINFORCED CONCRETE MANHOLE WITH 2'x4' INLET GRATE

23-1/2"

3/8"

1-5/8"

1-1/2"

23-1/2"

2"

3"

8-3/4"

2"

8-3/4"

2"

2"

48"

52"

2"

29-1/4"

2"

DEETER #2434 FRAME Requires Two Grates

29-1/4"

24-3/4"

21-3/4"

2"

24" x 24" Frame and Grate Detail

Double 24" x 24" Frame Detail

NOTE: Grates shall be imprinted on the top surface with "CITY OF WICHITA" using letters at least 1" in height. Other marking methods may be approved by the engineer.

Plastic Lining (Omit for Storm Sewer)

#4 Vertical Bars @ 9" Centers

#4 Horizontal Bars @ 9" Centers

3" 8" min.

1.5" Cir. Typ.

2" Cir. Typ.

4.5'

8"

16"

16"

8"

7'

6" 1 1/2" min.

#4 Bent Bars @ 9" Centers Typical Outside Corners Only

TOP VIEW

CITY OF WICHITA STANDARD

REINFORCED CONCRETE MANHOLE

BAUGHMAN COMPANY P.A.
ENGINEERING, SURVEYING, & PLANNING
318-262-2211 • 1115 E. 10th • WICHITA, KANSAS 67202

PROJECT NUMBER

DESIGN

DRAWN

STAFF

APPROVED

DATE

SCALE

NOTE

SHEET

4

OF

5

EAST TURNPIKE ENTRANCE 2ND ADDITION

WICHITA, KANSAS.

State of Kansas, Sedgewick County, ss. We, Baughman Company, Surveyors in abovesaid county and state do hereby certify that we have surveyed and platted "EAST TURNPIKE ENTRANCE 2ND ADDITION", Wichita, Kansas, and that the accompanying plat is a true and correct exhibit of the property surveyed, described as beginning at a point 630 feet south of the N.W. Corner of the N.E. 1/4 of Sec. 29, Twp. 27-S, R. 2-E; thence east parallel with and 400 feet south of the north line of said NE 1/4, 116.48 feet; thence south-easterly with a deflection angle to the right of 132°-36', a distance of 514.45 feet to the right-of-way line of the Kansas Turnpike as condemned in case A-55770; thence southerly, southwesterly and westerly along said Turnpike right-of-way to a point on the west line of said NE 1/4, said point being 109.59 feet south of the point of beginning; thence north along the west line of said NE 1/4, 109.59 feet to the point of beginning.

Baughman Company

William Z. Kahn Surveyor

Know all men by these presents that we, the undersigned, have caused the land described in the surveyors certificate to be platted into lots, blocks, streets and a drainage dedication to be known as "EAST TURNPIKE ENTRANCE 2ND ADDITION", Wichita, Kansas. The streets are hereby dedicated to and for the use of the public. The drainage dedication is hereby dedicated for drainage purposes. The easements are hereby granted as indicated for the construction and maintenance of all public utilities and drainage.

University Mall Inc.

Stanley Silverman Secretary

State of Nebraska, Sedgewick County, ss. Be it remembered that on this 12th day of September, 1974, before me a notary public in abovesaid county and state came Willard R. Seidin, President and Stanley Silverman, Secretary of University Mall Inc., to me known to be the same persons who executed the foregoing instrument of writing and duly acknowledged the execution of the same. In testimony whereof I have hereunto set my hand and affixed my notarial seal the day and year above written.

James W. Seider Notary Public

My Comm. Exp. 12/31/75

2 1974

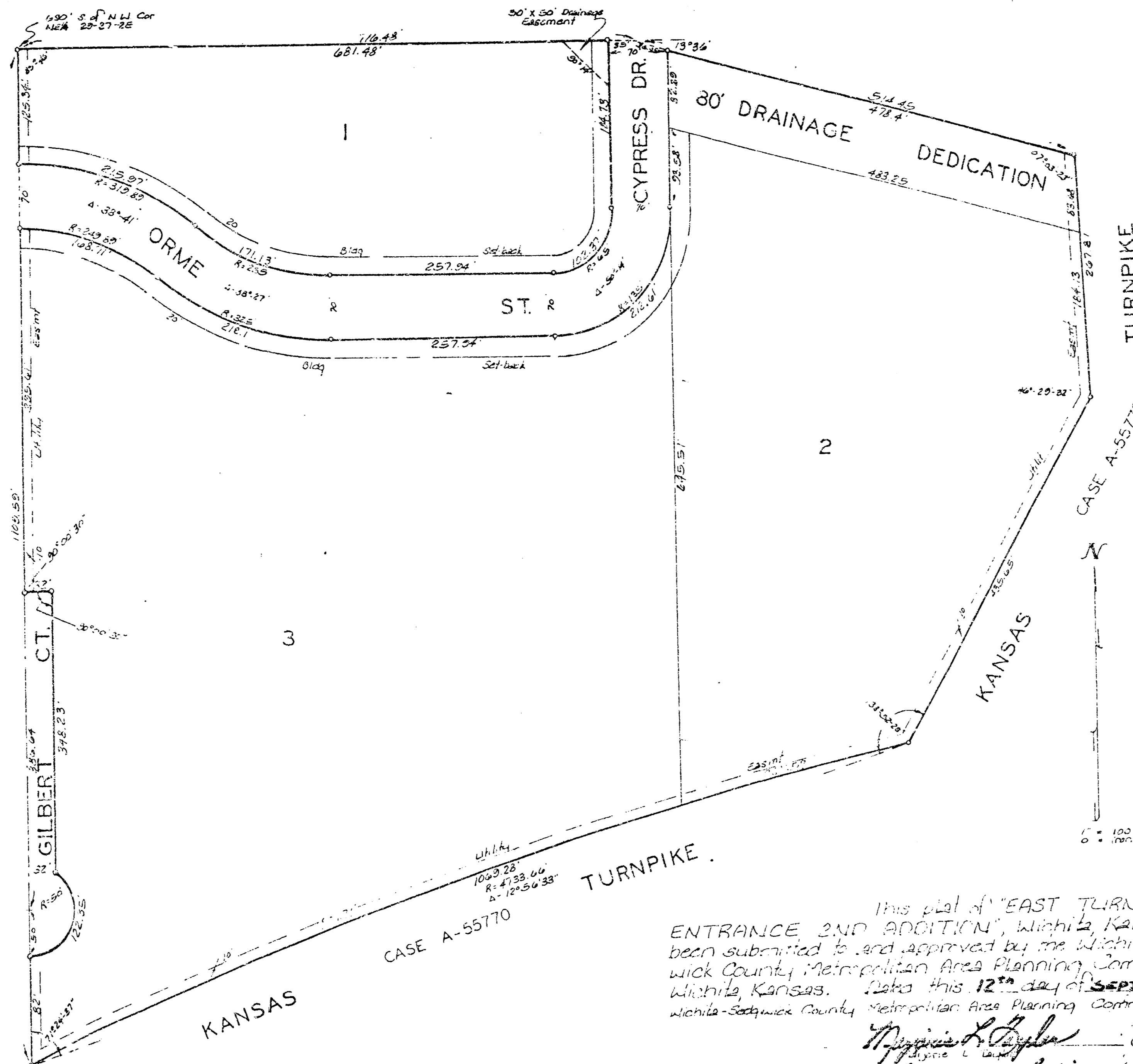
State of Kansas, Sedgewick County, ss. This is to certify that this plat was filed for record in the office of the Register of Deeds this 21st day of September, 1974, at 11:00 o'clock A.M. and is duly recorded.

Ruel B. Gilbert Register of Deeds

Ruel B. Gilbert Deputy

William D. Seaman, holder of a mortgage on the above described property do hereby consent to this plat of "EAST TURNPIKE ENTRANCE 2ND ADDITION", Wichita, Kansas.

William D. Seaman



This plat of "EAST TURNPIKE ENTRANCE 2ND ADDITION", Wichita, Kansas has been submitted to and approved by the Wichita-Sedgewick County Metropolitan Area Planning Commission, Wichita, Kansas, on this 12th day of September, 1974.

Margaret A. Doyle Chairman
Robert A. Stokun Secretary

The plat approved and all dedications shown herein accepted by the Board of Commissioners of the City of Wichita, Kansas, this 12th day of September, 1974.

John L. Baker Mayor

Entered on transfer record this 21st day of September, 1974.

Ruel B. Gilbert County Clerk

This plat approved and all dedications shown herein accepted by the Board of Commissioners, Sedgewick County, Kansas, this 21st day of September, 1974.

Barry Wash Chairman
Elmer Peters Commissioner
Elmer Peters County Clerk

State of New Mexico, Sedgewick County, ss. Be it remembered that on this 12th day of September, 1974, before me a notary public in abovesaid county and state came William D. Seaman, to me known to be the same person who executed the foregoing instrument of writing and duly acknowledged the execution of the same. In testimony whereof I have hereunto set my hand and affixed my notarial seal the day and year above written.

William D. Seaman Notary Public

My Comm. Exp. 12/31/75

4-19
G-2