

1 STORM SEWER PROFILE
Scale: As Shown

2 STORM SEWER PROFILE
Scale: As Shown

37TH STREET NORTH

Note:
All pedestrian works required under General Provision No. 25 of the Community Unit Plan No. DP-237 will be provided by the developer.

GENERAL NOTES

- It shall be the responsibility of the subcontractors to notify all applicable utility companies who may be affected by the proposed work. The subcontractor shall make every effort to protect existing utility lines and shall repair any damages of their own expense. The subcontractors shall also coordinate their activities with other subcontractors to ensure compliance with the project schedule.
- All site concrete shall have a minimum 28 day compressive strength of 4000 psi, a slump of 4", an air content of 5% and a minimum water to cement ratio of 0.48.

APPROVED AS NOTED
By CITY ENGINEER OF WICHITA

SITE LEGEND

EXISTING

- Contours 100.0
- Spot elevations
- Trees to be saved
- Trees to be removed
- Storm sewer main / lateral 12" ST

PROPOSED

- Contours 100.0
- Spot elevations
- Trees
- Shrubs
- Storm sewer main / lateral 12" ST

MISCELLANEOUS

- Property line
- Setback line
- Silt fence
- Contract limit line

SYMBOLS

- Existing Parking lights
- Proposed Parking lights
- Storm Catchbasins
- Sanitary & Storm Manhole
- Storm Inlet protection
- Warning signs
- Concrete pavement Slope Arrow

- Sanitary Sewers
- Storm Sewers *UR# 8/10/1*
- Utility Approaches
- Water Mains
- Paving

NOTE TO CONTRACTOR

INSPECTION AND TESTING FOR THIS PROJECT IS TO BE PROVIDED BY A LICENSED CONSULTING ENGINEERING FIRM UNDER CONTRACT WITH THE OWNER/DEVELOPER. SAID INSPECTION TO BE IN ACCORDANCE WITH THE CITY OF WICHITA STANDARD CONSTRUCTION ENGINEERING PRACTICES AND CERTIFIED BY A LICENSED PROFESSIONAL ENGINEER. NO WORK SHALL BE PERFORMED IN DEDICATED EASEMENTS OR THE PUBLIC RIGHT-OF-WAY BY THE CONTRACTOR WITHOUT SUCH INSPECTION NOR SHALL ANY WORK BE COMMENCED IN DEDICATED EASEMENTS OR PUBLIC RIGHT-OF-WAY WITHOUT WRITTEN AUTHORIZATION BY THE CITY ENGINEER.

- PROPOSED STORM C.B. (Medium R-200) TYPE A
INV. IN = 146.2
INV. OUT = 146.47
- PROPOSED STORM C.B. (Medium R-200) TYPE A
INV. IN = 145.9
INV. OUT = 146.19
- PROPOSED STORM C.B. (Medium R-200) TYPE A
INV. IN = 146.2
INV. OUT = 146.45
- PROPOSED STORM C.B. (Medium R-200) TYPE D
INV. IN = 145.8
INV. OUT = 146.08
- PROPOSED STORM C.B. (Medium R-200) TYPE D
INV. IN = 145.3
INV. OUT = 145.92

Pipe Schedule:

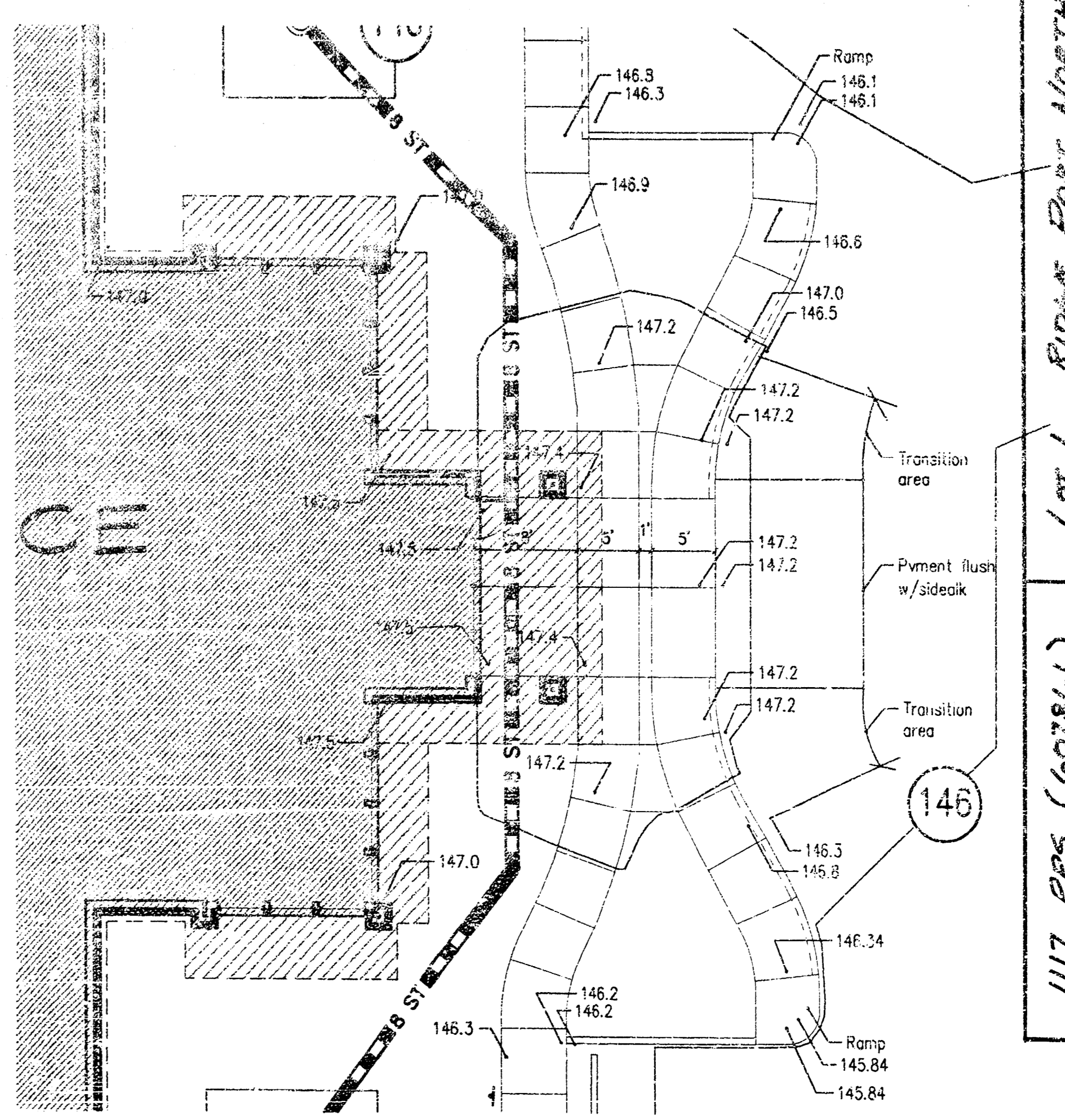
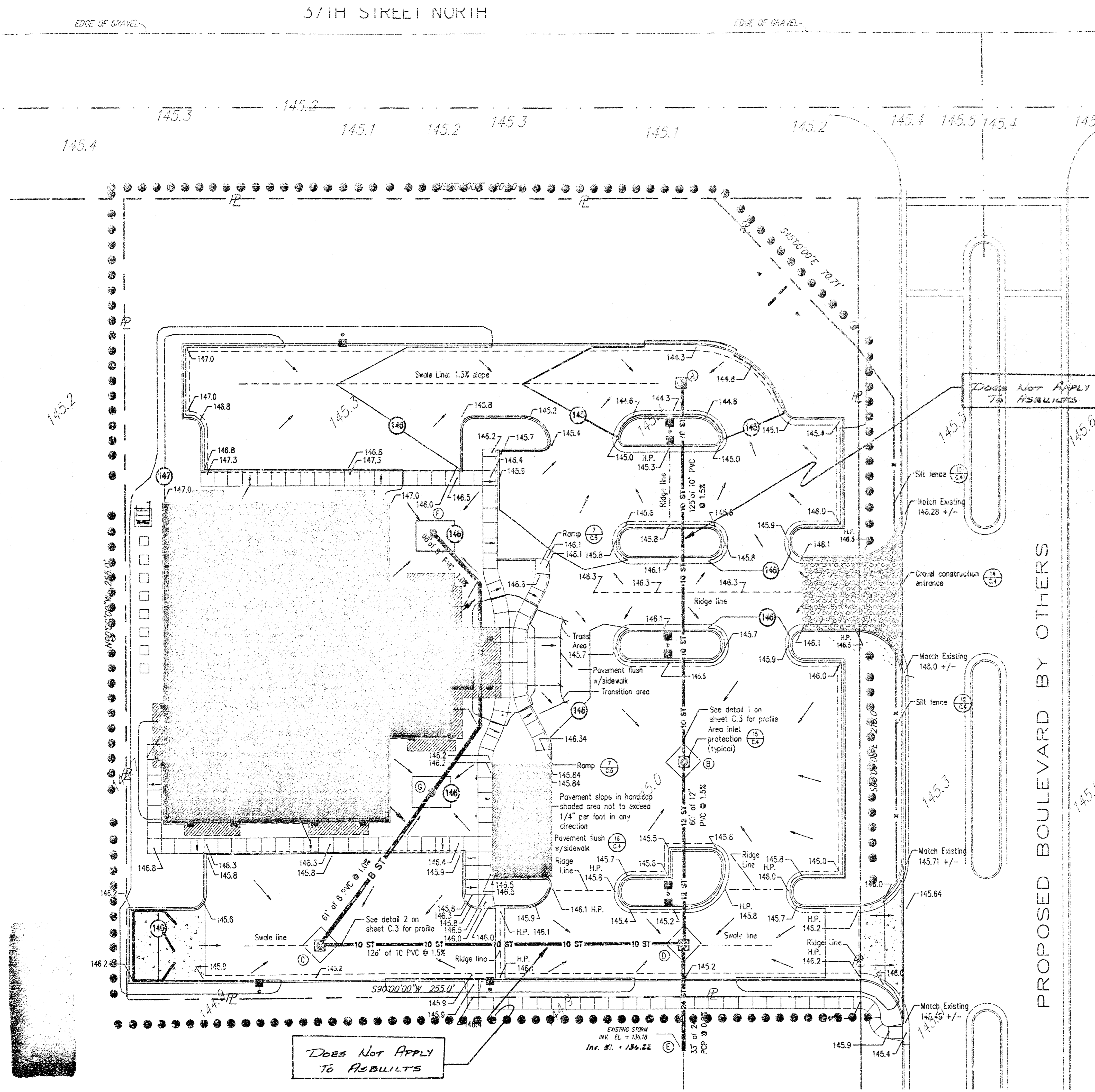
From	To	Size	Material	Slope	Length
A	B	10"	PVC	1.5%	125'
B	D	12"	PVC	1.5%	66'
C	D	10"	PVC	1.5%	126'
D	E	24"	RCP	0.2%	33'
F	G	8"	RCP	1.0%	98'
G	C	8"	PVC	1.0%	61'

BENCHMARK:
CITY DISC - SW COR. RIDGE RD. & 29TH ST. NO.,
80.9' S. & 63.7' W. OF C BOTH.
ELEV. = 139.15 CITY DATUM (1326.55 M.S.L.)

MINIMUM BUILDING PAD ELEVATION FOR LOWEST OPENING TO THE STRUCTURES

LOT	ELEVATION (CITY DATUM)
1	144.6

LEGAL DESCRIPTION:
The northwesterly portion of Lot 1,
Ridge Park North 2nd Addition,
Wichita, Sedgewick County, Kansas



1117 PPS (607&L1) Lot 1, Ridge Park North 2nd Add.

VIA CHRISTI PROPERTY SERVICES, INC
WICHITA, KANSAS

Wichita Engineering & Architecture, Inc.
Architects - Engineers - Planners - Surveyors - Environmental Scientists

Project Number: D4945
Scale: 1" = 20'
Drawn: K.J.L.
Checked: [Signature]

7-21-01 SIGNATURE BLOCK
7-18-01 REVISION FOR PERMITS
5-25-01 ADDendum #2
7-18-01 C.B. CS-2

C-3

sdjllm