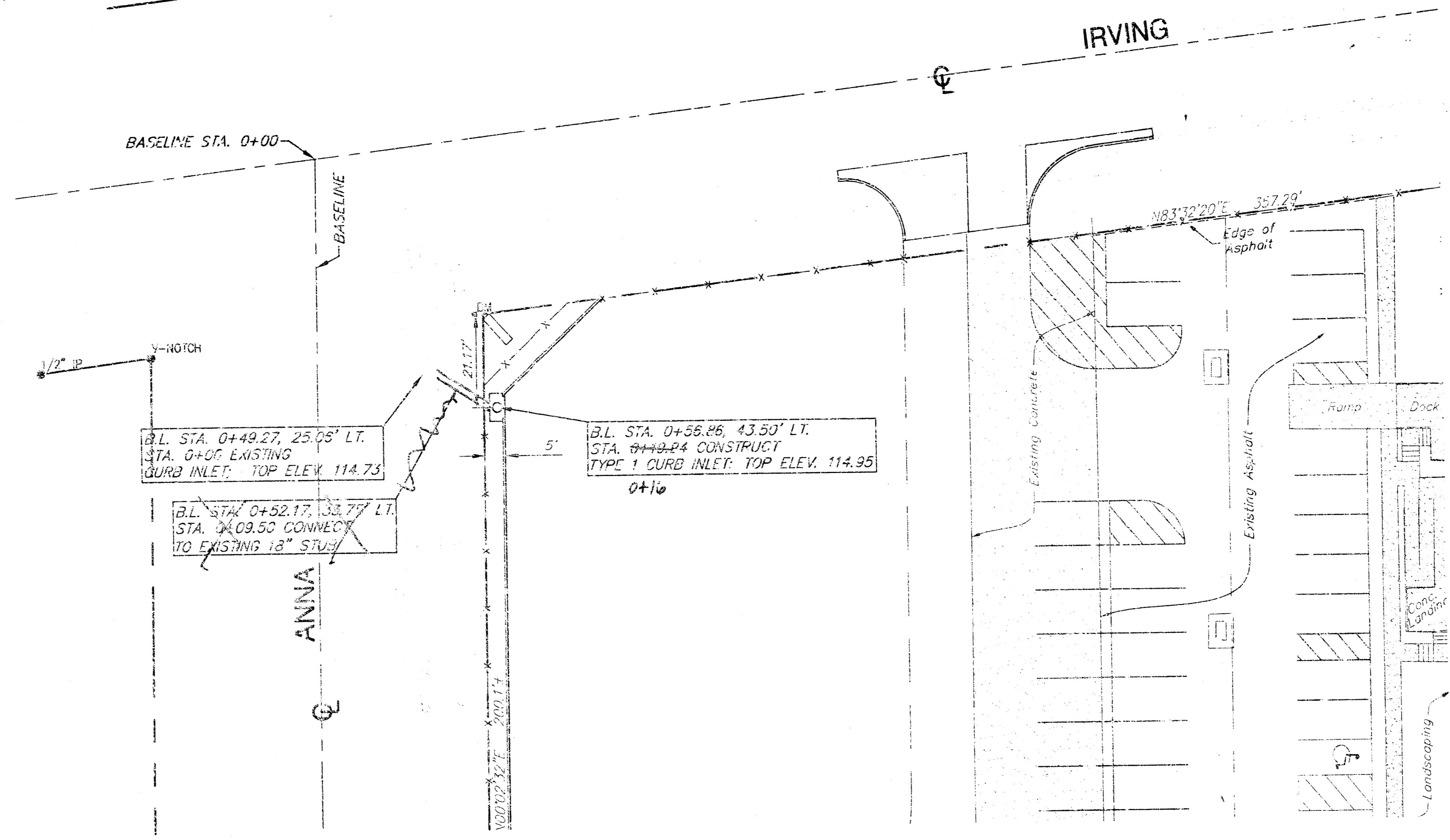


APPROVED AS NOTED  
BY CITY ENGINEER OF WICHITA

Sanitary Sewers \_\_\_\_\_  
Storm Sewers VRH 8/1/01  
Driveway Approaches \_\_\_\_\_  
Water Mains \_\_\_\_\_  
Paving \_\_\_\_\_

NOTE TO CONTRACTORS

Inspection and testing for this project are to be provided by a Licensed Consulting Engineering Firm under contract with the Owner/Developer. Said inspection to be in accordance with the City of Wichita standard construction engineering practices and certified by a Licensed Professional Engineer. No work shall be performed in dedicated easements or public right-of-way by the Contractor without such inspection, nor shall any work be commenced without written authorization by the City Engineer.

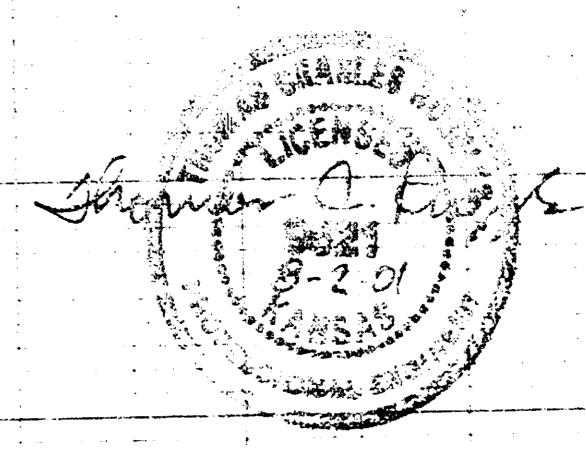
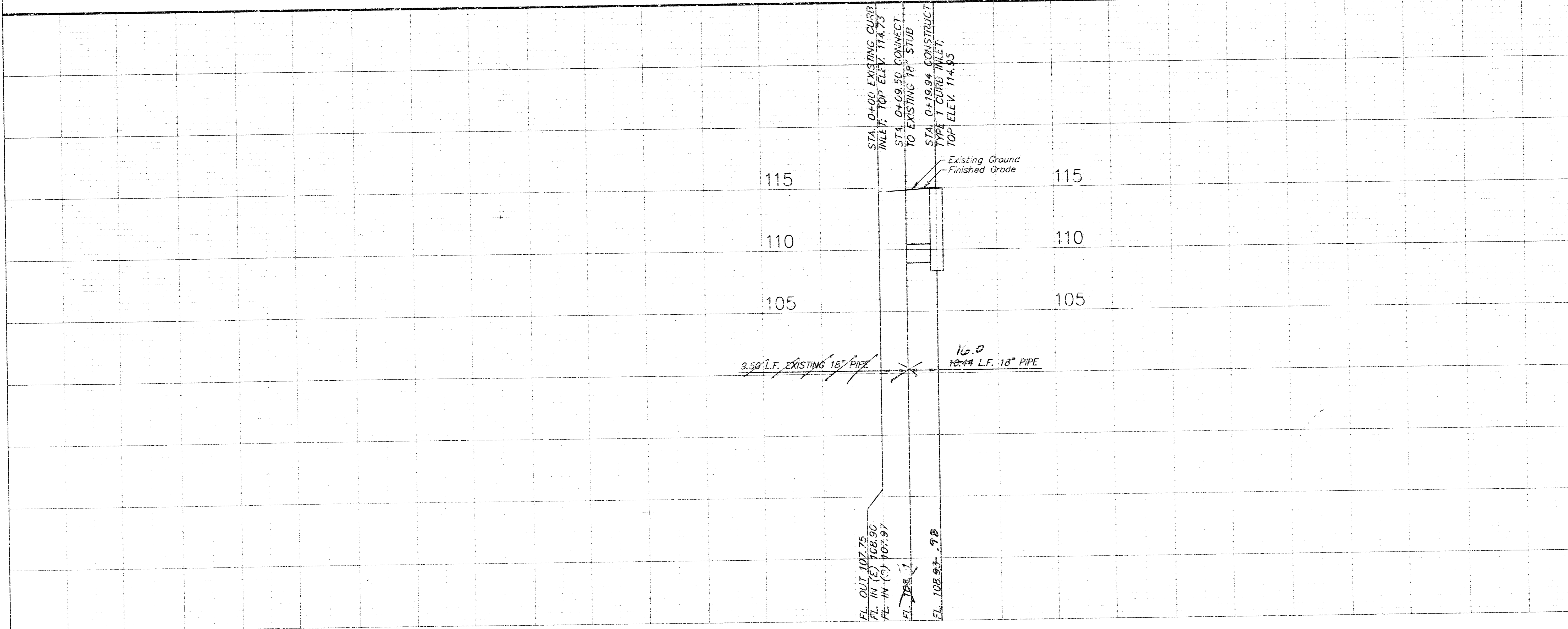


**BENCHMARK:**  
RAILROAD SPIKE IN WEST FACE OF POWER POLE AT THE N.E. CORNER OF ANNA AND WALKER. ELEVATION 115.91

RAILROAD SPIKE IN SOUTH FACE OF POWER POLE AT THE S.E. CORNER OF ANNA AND IRVING. ELEV 115.90

BOOKED  
6-19-01  
M.S.  
D-1A

SCALE  
1" = 20' Horiz. (Plan)  
1" = 5' Vert. (Profile)



11-2-01 JCR... REVISED AS 2017

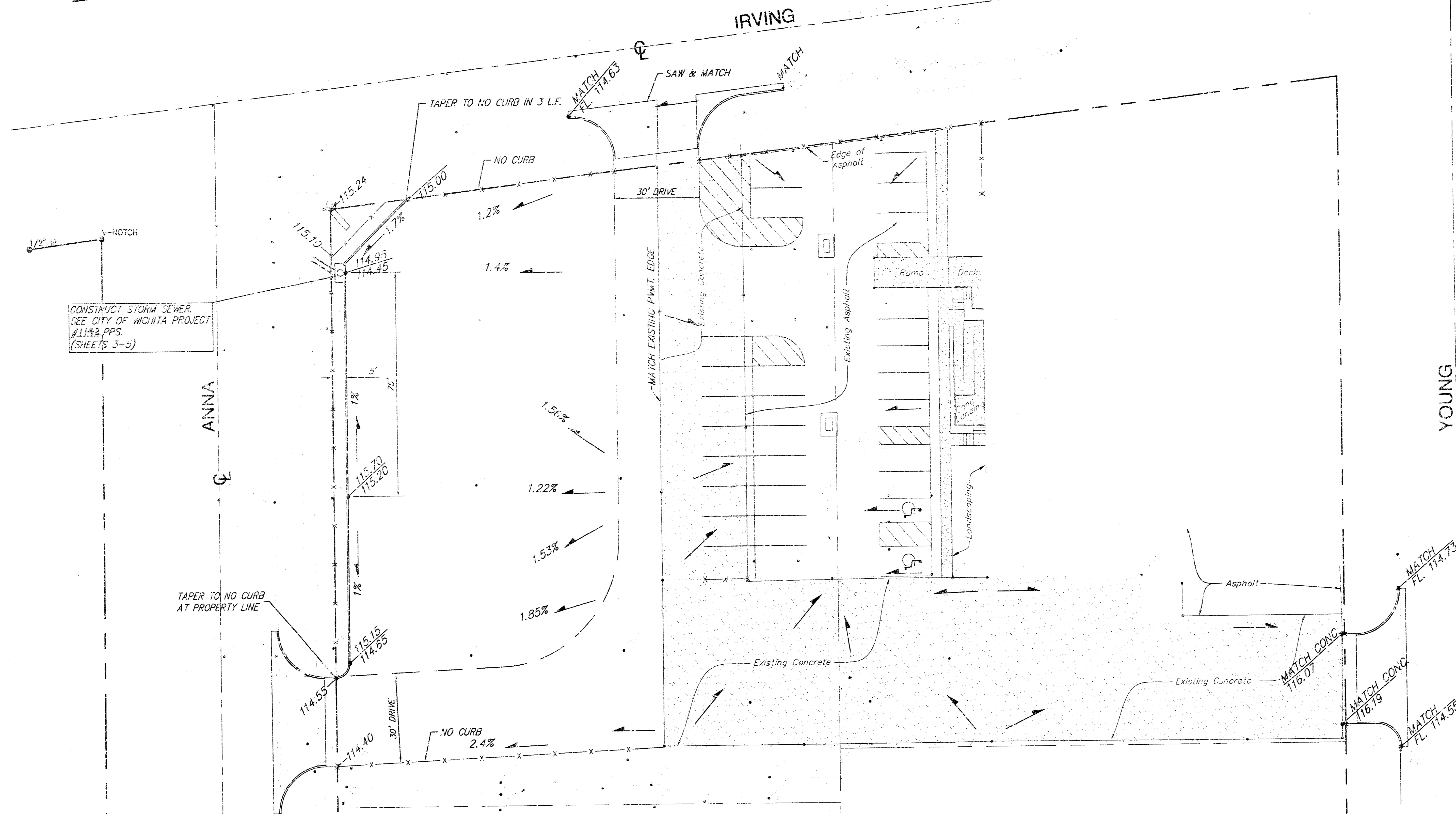
**SYSKO FOOD SERVICE  
STORM SEWER  
1001 S. YOUNG, WICHITA, KS.**

**SRB** 574 NORTH MAIN WICHITA, KANSAS 67203 314-224-5708 FAX 314-224-5827  
SAVOY, RUGGLES & ROHM, P.A. ENGINEERING & SURVEYING

PROJECT NUMBER: 1142 PPS (607861)

DESIGN: TCR	DRAWN: JTS	CHECKED: JCR	DATE: July 18, 2001
-------------	------------	--------------	---------------------

SHEET: 2 OF 5



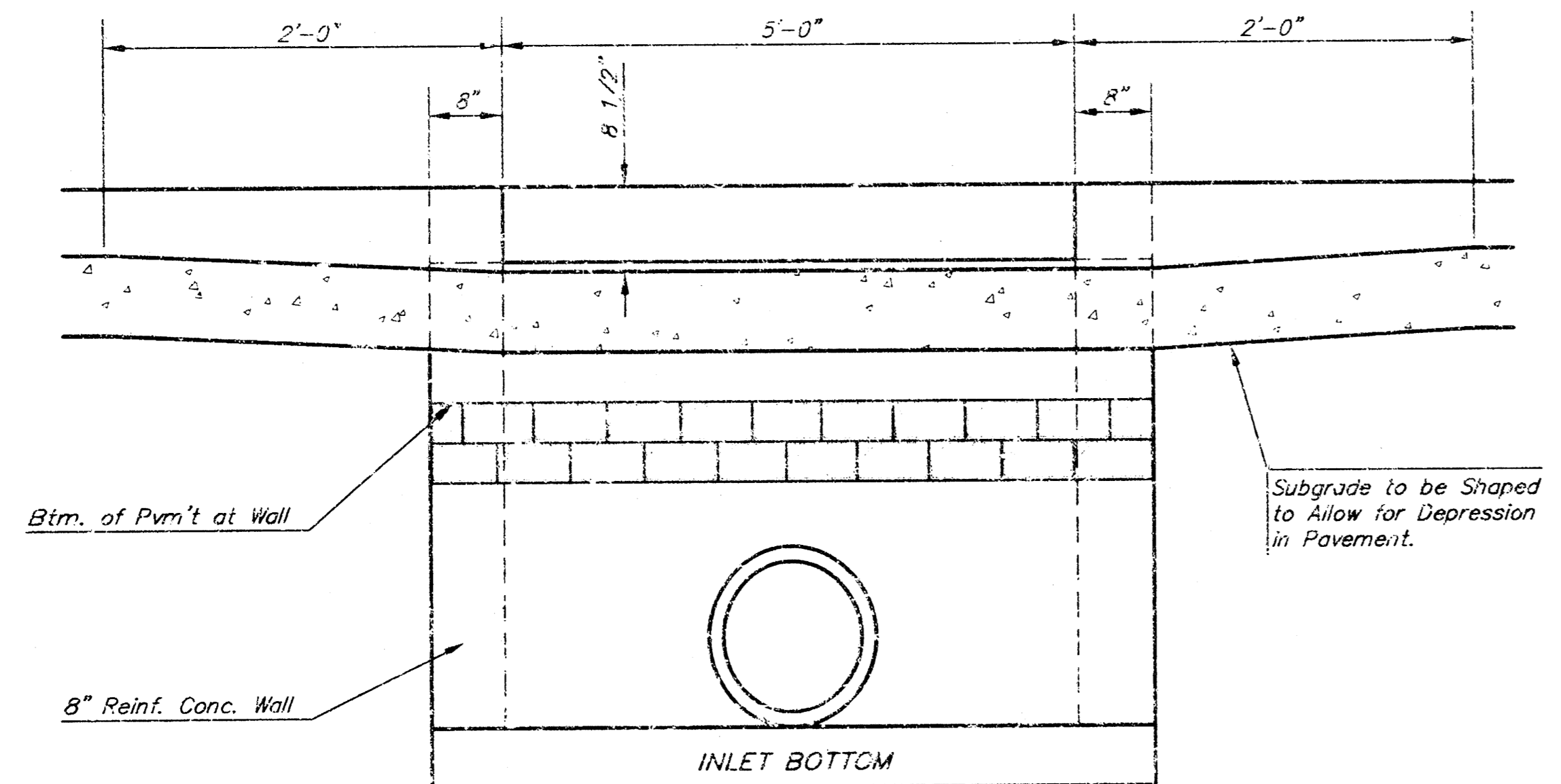
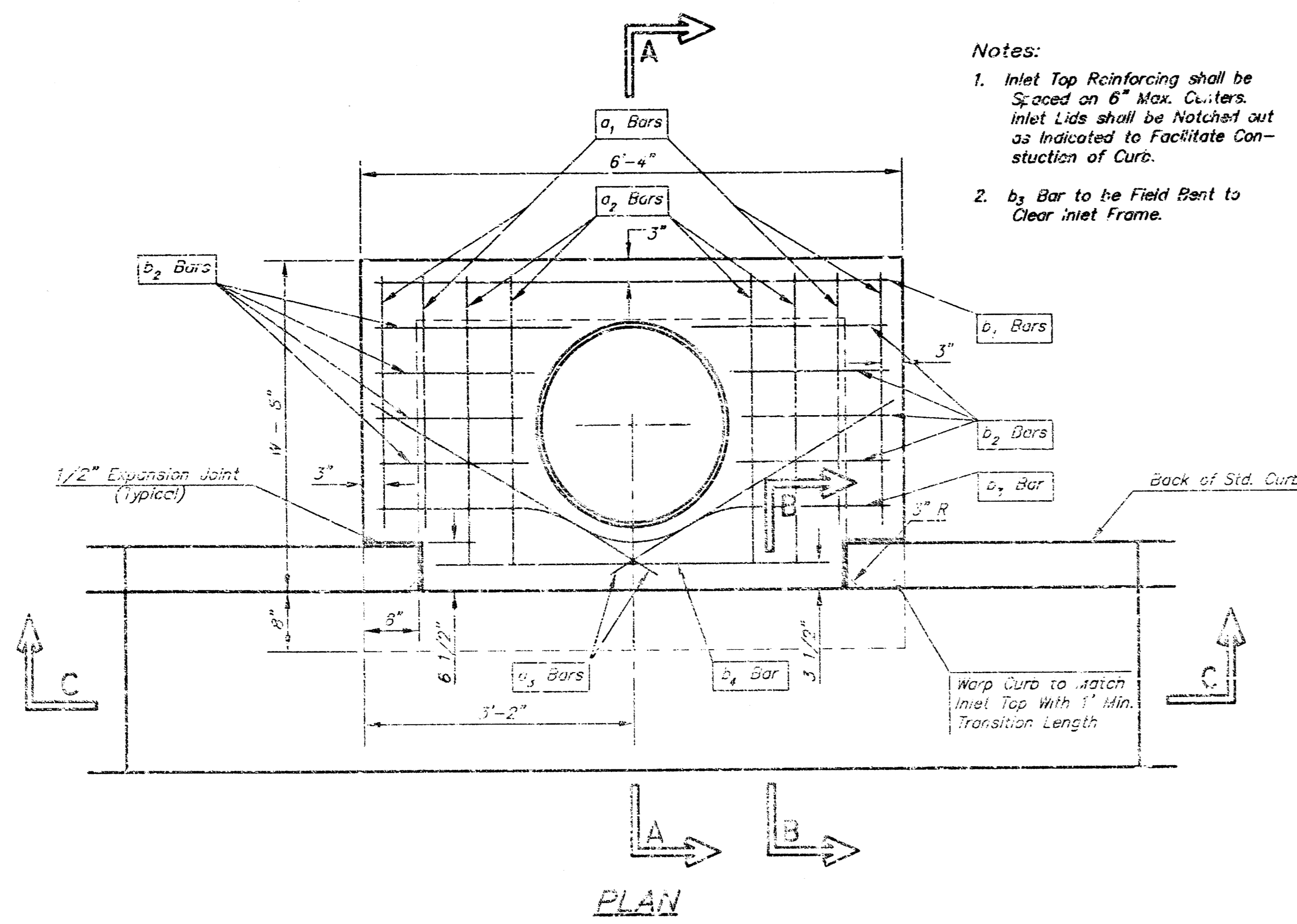
CONSTRUCT STORM SEWER  
SEE CITY OF WICHITA PROJECT  
#1142 PPS.  
(SHEET 114.2)

IMPERVIOUS AREA = 66,658 S.F.  
PERVIOUS AREA = 8,305 S.F.

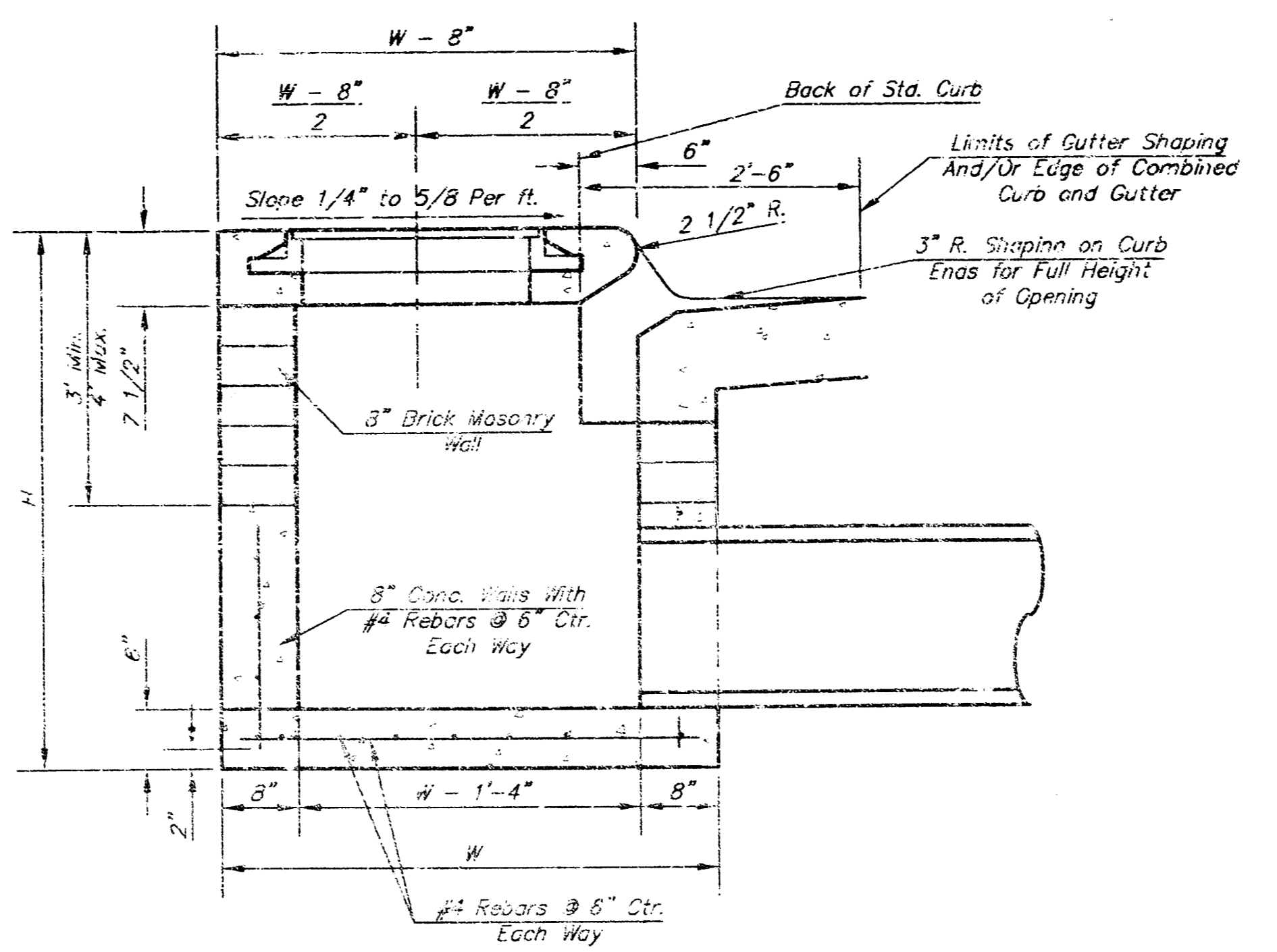
**BENCHMARK:**  
RAILROAD SPIKE IN WEST FACE OF  
POWER POLE AT THE N.E. CORNER OF  
ANNA AND WALKER.  
ELEVATION 115.91

RAILROAD SPIKE IN SOUTH FACE OF  
POWER POLE AT THE S.E. CORNER OF  
ANNA AND IRVING.  
ELEV 115.90

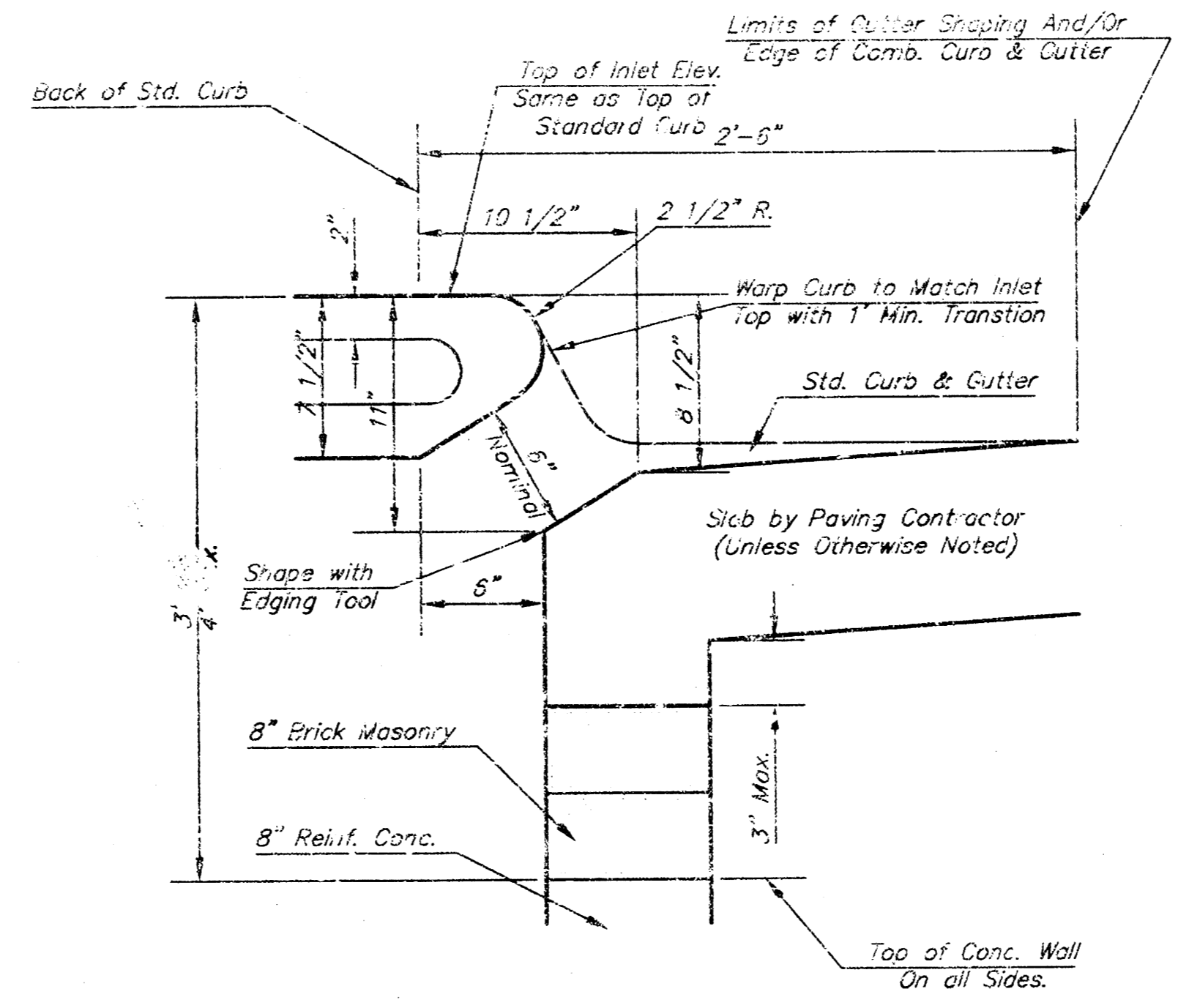
<b>SYSKO FOOD SERVICE</b>			
<b>SITE GRADING PLAN</b>			
100 S. YOUNG, WICHITA, KANSAS			
<b>SRB</b>	924 NORTH MAIN WICHITA, KANSAS 67203 www.srb.com	316-254-2000 FAX 316-254-4631 E-mail: srb@srb.com	SHEET 3 OF 5
	<b>SAVOY, RUGGLES &amp; BOHM, P. A.</b> ENGINEERING & SURVEYING		
PROJECT NUMBER 1142 PPS (607861)			
DESIGN TOR	DRAWN JTS	UTILITY REVIEW	DATE July 25, 2001



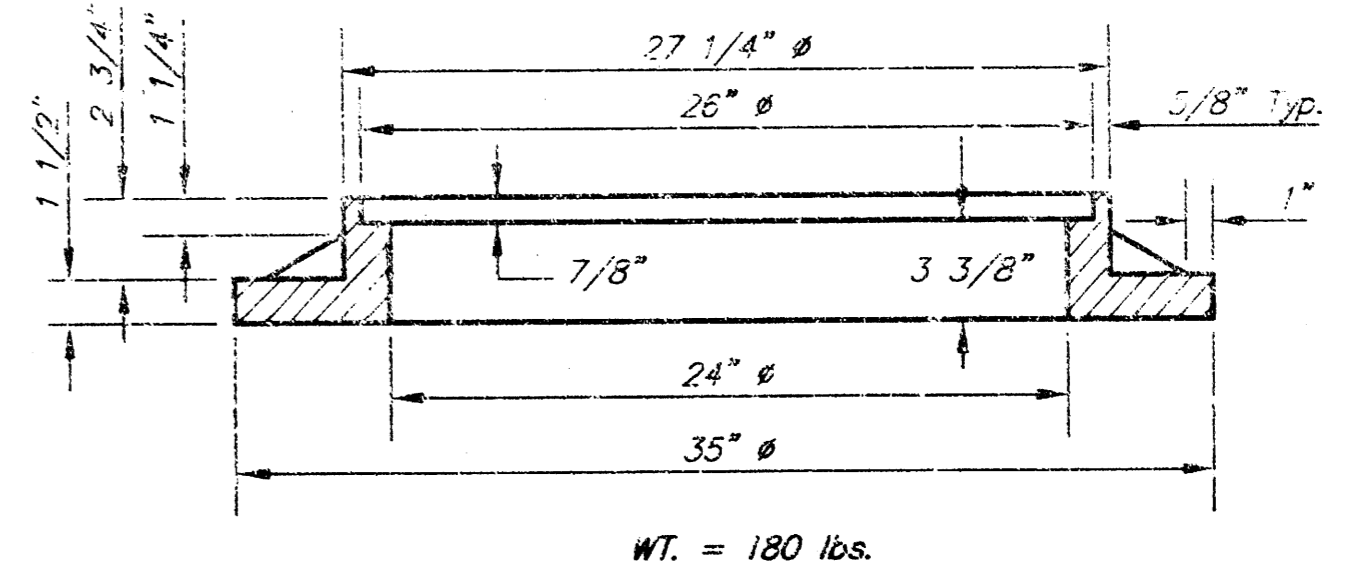
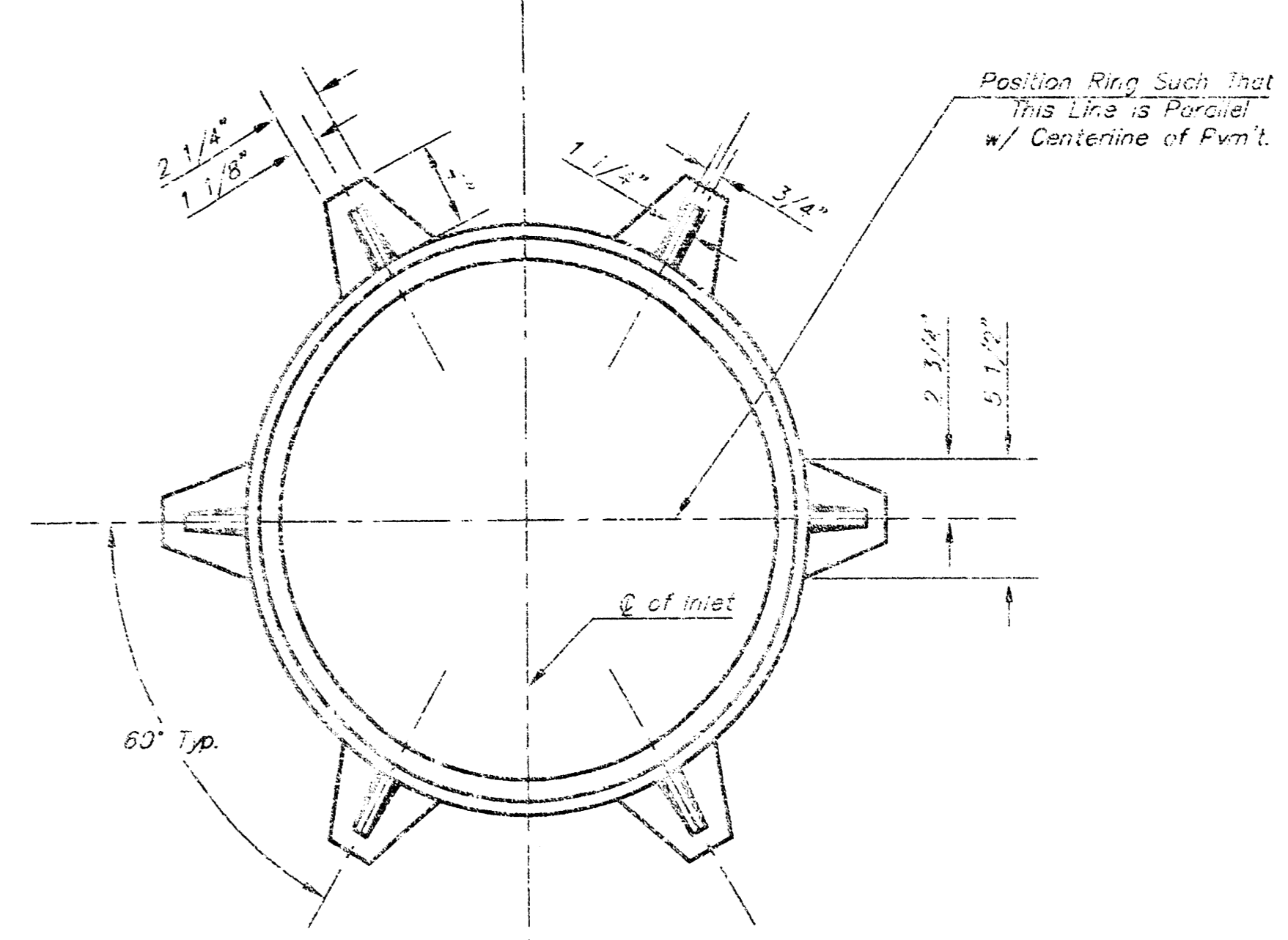
SECTION C-C



SECTION A-A

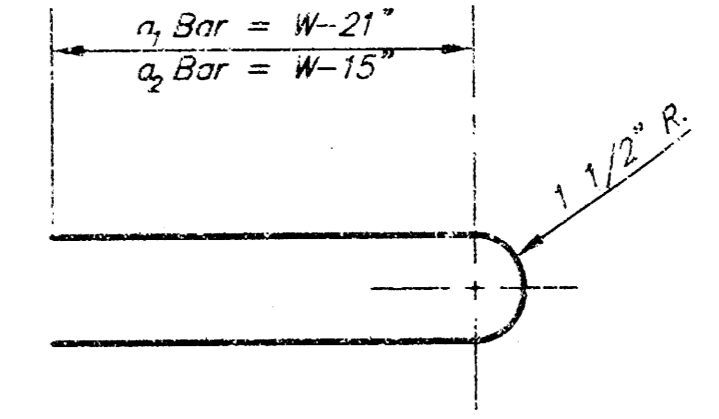


SECTION B-B



MANHOLE RING AND COVER

\*See City of Wichita Standard Manhole Ring and Cover Detail Sheet for Cover Details to Be Used With Inlet Frame.



BENDING DIAGRAM

**STEEL SCHEDULE**

BAR	a <sub>1</sub>	a <sub>2</sub>	a <sub>3</sub>	S <sub>1</sub>					a <sub>2</sub>	a <sub>3</sub>	b <sub>1</sub>	b <sub>2</sub>	b <sub>3</sub>	WT. LBS.
NUMBER	4	4	2	1	3	5	7	9	6	1	1			
SIZE	#4	#4	#4	#4	#4	#4	#4	#4	#4	#4	#6			
W=4'-4"	5'-7"	6'-7"	4'-0"	6'-1"	-	-	-	-	1'-9"	6'-2"	4'-8"		60±	
W=5'-4"	7'-7"	8'-7"	5'-0"	6'-1"	-	-	-	-	1'-9"	6'-2"	4'-8"		81±	
W=6'-4"	9'-7"	10'-7"	6'-0"	-	6'-1"	-	-	-	1'-9"	6'-2"	4'-8"		101±	
W=7'-4"	11'-7"	12'-7"	7'-0"	-	-	6'-1"	-	-	1'-9"	6'-2"	4'-8"		121±	
W=8'-4"	13'-7"	14'-7"	8'-0"	-	-	-	6'-1"	-	1'-9"	6'-2"	4'-8"		141±	

Note: a<sub>3</sub> Bars to be Placed Approx. 2" Below Top of Inlet Cover.

**STANDARD CURB INLET PRECAST TOPS**

W	PRE-CAST TOP SIZE	PIPE SIZE	CU. YD. CONC.
4'-4"	3'-8" 6'-4" 7 1/2"	21" & SMALLER	0.32±
5'-4"	4'-8" 6'-4" 7 1/2"	24" & 30"	0.51±
6'-4"	5'-8" 6'-4" 7 1/2"	36" & 42"	0.64±
7'-4"	6'-8" 6'-4" 7 1/2"	48" & 54"	0.77±
8'-4"	7'-8" 6'-4" 7 1/2"	60" & 66"	0.90±

**GENERAL NOTES**

- Concrete tops to be installed on thin mortar cushion to insure full support along brick walls. Concrete tops may be cast in place or precast. Concrete used for inlet construction shall be concrete pavement mix.
- Contractor shall have the option of constructing 8" brick masonry walls between the concrete inlet base and top on this inlet when W=6'-4" and H=7'-0" or less.
- Inlet invert shall be shaped with 8 sack sand mix concrete to create flow channels and to increase hydraulic efficiency such that the inlet will be self cleaning between all inlet and/or outlet pipes.
- The ends of all pipes installed in inlets shall be cut off flush with the inside face of the inlet wall.

<p>THE CITY OF WICHITA</p> <p>CITY ENGINEER'S OFFICE          CITY HALL - SEVENTH FLOOR          100 NORTH MAIN STREET          WICHITA, KANSAS 67202          (316) 268-4900          (316) 268-4114 FAX</p>	<p><b>STANDARD TYPE 1 CURB INLET</b>  <b>OPENING = 6"x5'-0"</b></p>	
	<p>M. E. LINDEBAK P.E. - CITY ENGINEER</p>	<p>PROJECT NUMBER  <b>1142 PPS</b></p>
<p>DATE  <b>MAR 06</b></p>	<p>SHEET 4 OF 5</p>	