

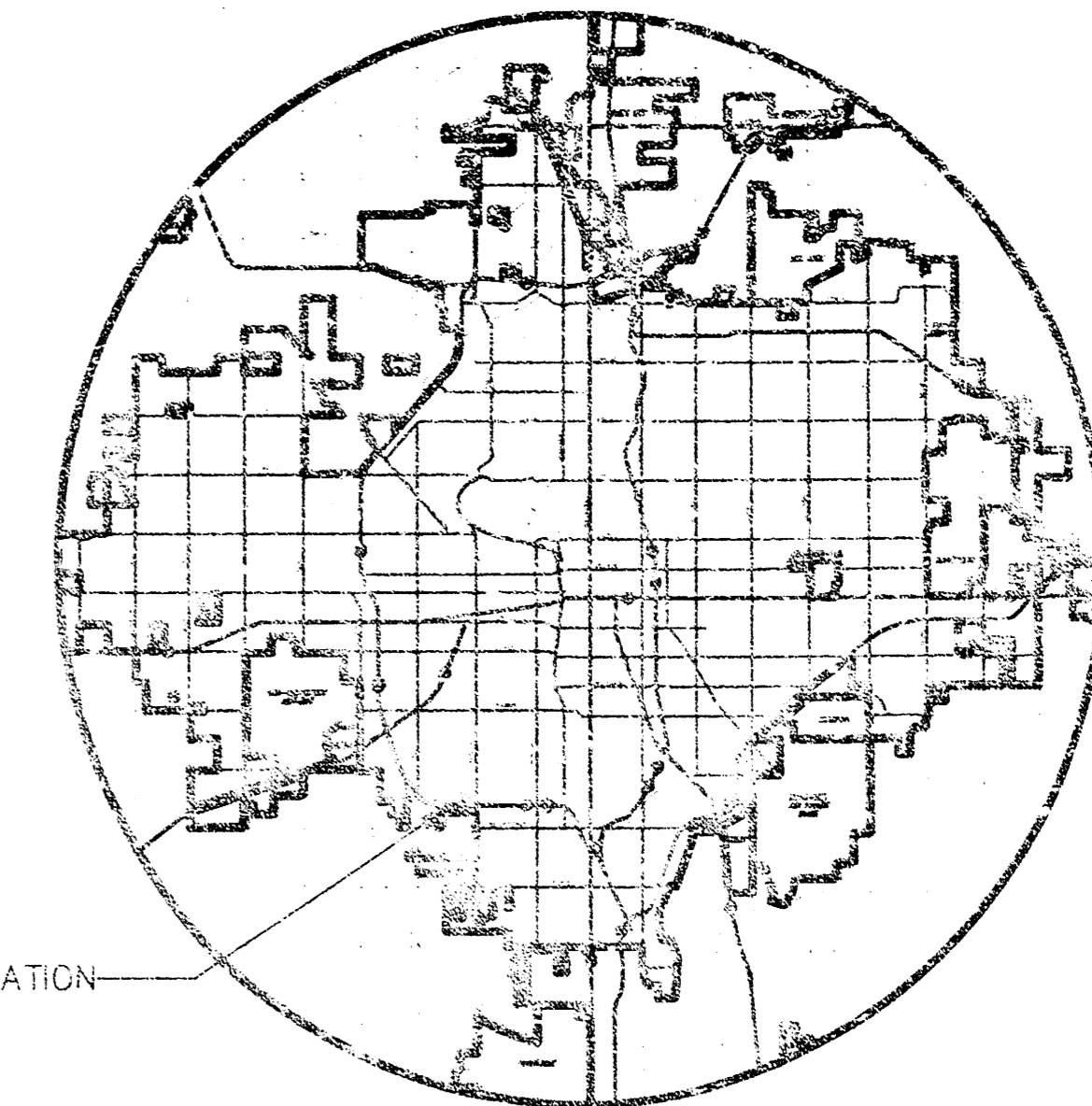
PRIVATE STORM WATER SEWER PLANS FOR
WENDY'S
 IN
YMCA SOUTH ADDITION

AN ADDITION TO THE CITY OF WICHITA
 SEDGWICK COUNTY, KANSAS

PROJECT NO. 1155PPS

MICHAEL E. LINDEBAK, CITY ENGINEER

OCA 607861



SITE LOCATION

LOCATION MAP

GENERAL NOTES

1. THE TOPS OF INLETS AS NOTED ON THE PLANS MAY VARY SO AS TO MEET PROPOSED TOP OF CURB ELEVATIONS OR PAVEMENT ELEVATIONS. THE FIELD ENGINEER SHALL LOCATE INLETS WITH REFERENCE TO PROPOSED PAVING PLANS OF THE PERTINENT STREETS.
2. ALL CONCRETE SHALL BE STANDARD PAVING MIX UNLESS OTHERWISE NOTED.
3. THE CONTRACTOR SHALL BE RESPONSIBLE FOR PRESERVING PROPERTY IRONS. THE CONTRACTOR SHALL BE REQUIRED TO RE-ESTABLISH ANY PROPERTY IRONS WHICH ARE DAMAGED OR DESTROYED BY HIS CONSTRUCTION OPERATIONS. SUCH IRONS SHALL BE RE-ESTABLISHED BY A LICENSED LAND SURVEYOR IN ACCORDANCE WITH STATE LAWS.
4. TREES TO BE REMOVED ARE MARKED . . . ALL TREES WHICH IN THE OPINION OF THE FIELD ENGINEER CAN BE SAVED, SHALL BE SAVED.
5. EXISTING UTILITIES AND THEIR LOCATIONS, AS SHOWN ON THE PLANS REPRESENT THE BEST INFORMATION OBTAINABLE FOR DESIGN. LOCATION INFORMATION HAS BEEN OBTAINED FROM THE VARIOUS COMPANIES AND IS EITHER FROM COMPANY UTILITY DRAWINGS OR COMPANY PROVIDED FIELD LOCATIONS. THE PLAN LOCATIONS SHOWN ARE NOT GUARANTEED. ADDITIONAL EXISTING UTILITIES MAY ALSO BE ENCOUNTERED.

6. CONTRACTOR WILL BE REQUIRED TO PROVIDE A MINIMUM ADVANCE NOTICE OF FORTY-EIGHT (48) HOURS TO UTILITY COMPANIES PRIOR TO STARTING ANY EXCAVATION AS FOLLOWS:

KANSAS ONE-CALL 1-800-344-7233

THE CONTRACTOR MUST NOTIFY THE FOLLOWING IN CASE OF AN EMERGENCY:

CABLEVISION	263-2061
ARKLA GAS COMPANY	263-7511
KANSAS GAS & ELECTRIC	264-1141
SOUTHWEST BELL TELEPHONE COMPANY	1-371-2611
CITY OF WICHITA WATER & SEWER MAIN	262-6000

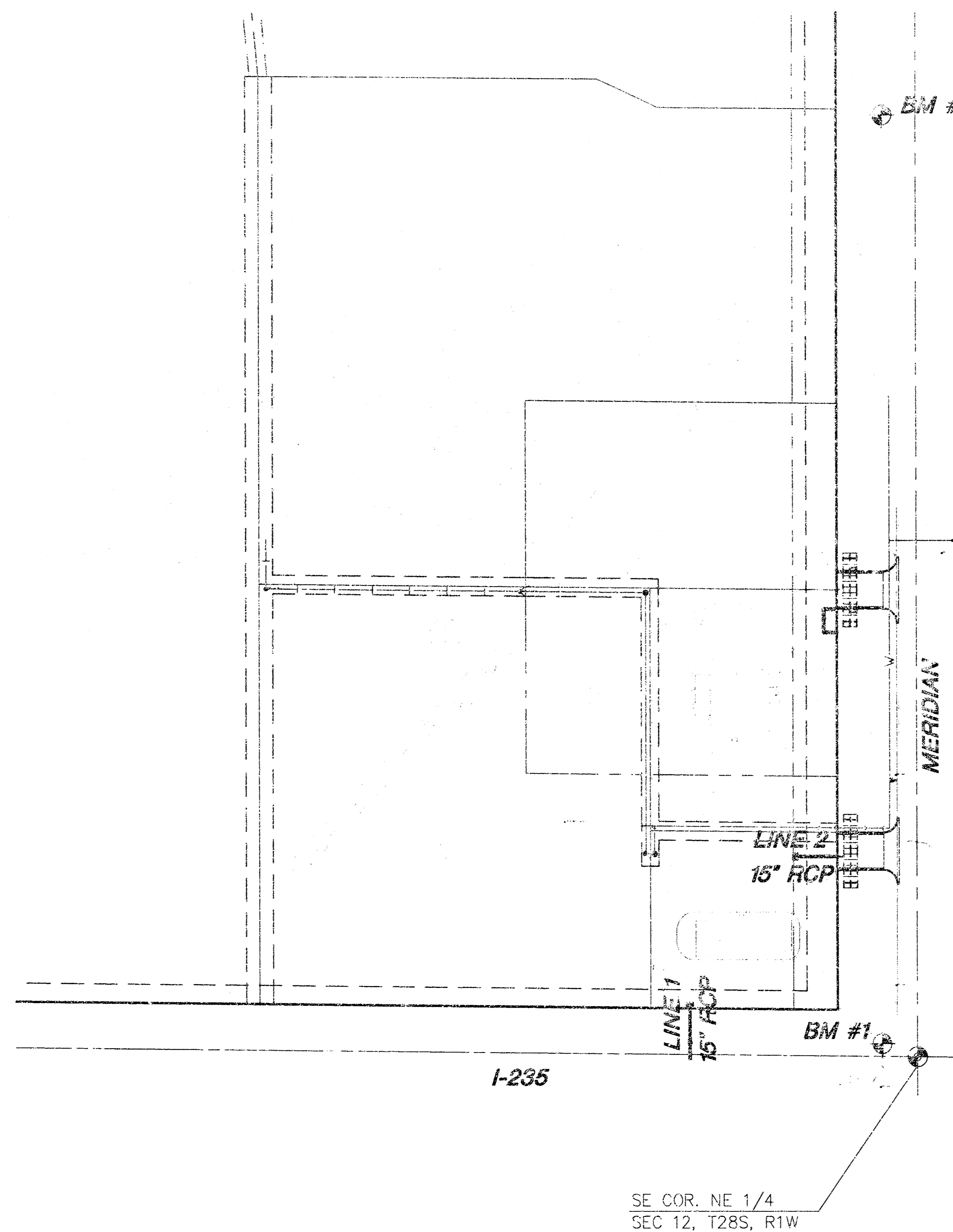
7. UNLESS SHOWN OR STATED OTHERWISE ON THESE DRAWINGS, MATERIALS AND CONSTRUCTION SHALL BE IN ACCORDANCE WITH CITY OF WICHITA SPECIFICATIONS.
8. RUBBLE FROM THE REMOVAL OF MISCELLANEOUS STRUCTURES AND EXCESS EXCAVATION WHICH IS TO BE WASTED SHALL BE DISPOSED OF ON SITES TO BE PROVIDED BY THE CONTRACTOR. THESE SITES SHALL BE APPROVED BY THE ENGINEER AS TO SUITABILITY, APPEARANCE AND SITE LOCATION. LOCATIONS THAT, IN THE OPINION OF THE ENGINEER, WILL LEAVE AN UNDESIRABLE APPEARANCE WILL NOT BE APPROVED. ALL DISPOSAL SITES MUST BE APPROVED BY THE KANSAS DEPARTMENT OF HEALTH AND ENVIRONMENT. MATERIAL EITHER STOCKPILED OR DISPOSED OF IN A FLOOD PLAIN WOULD REQUIRE A KANSAS STATE BOARD OF AGRICULTURE PERMIT. ANY MATERIAL DUMPED IN WATERS OF THE UNITED STATES OR WETLANDS IS SUBJECT TO U.S. CORPS OF ENGINEERS PERMITTING REGULATIONS. ANY MATERIAL BURIED OR STOCKPILED BEYOND APPROVED CONSTRUCTION LIMITS WOULD REQUIRE ADDITIONAL ARCHAEOLOGICAL INVESTIGATIONS UNLESS BURIED IN A PREVIOUSLY APPROVED BORROW LOCATION.
9. SITE RESTORATION AND PREPARATION SHALL BE SUBSIDIARY TO THE PROJECT.
10. CUTS MADE TO PAVED SURFACES ON PUBLIC PROPERTY WILL BE REPAIRED BY THE CITY'S CONTRACTOR AND CHARGED AGAINST THE OWNER/APPLICANT. UNIT REPAIR PRICES ARE AVAILABLE FROM THE CITY AT 268-4418. A SURCHARGE MAY BE APPLICABLE. CALL 268-4118 FOR DETAILS. REPAIR COSTS TO BE PAID PRIOR TO RELEASE OF THE WATER SERVICE IF WATER SERVICE IS AFFECTED.
11. ALL LAWN/URF AREAS DISTURBED BY CONSTRUCTION OF THE PROPOSED IMPROVEMENTS SHALL BE RESTORED WITH THE SAME GRASS/SOD AS EXISTING. RESTORATION OF DISTURBED AREAS SHALL INCLUDE, BUT NOT BE LIMITED TO, TOP SOIL PREPARATION, SEEDING, MULCH, AND/OR RE-SEEDING. ALL SEEDING/SODDING WORK SHALL BE IN ACCORDANCE WITH THE CITY OF WICHITA STANDARD SPECIFICATIONS AND THE CITY OF WICHITA ADMINISTRATIVE REGULATION NO. AR78 WHICH GOVERNS CLEAN UP AND RESTORATION OR REPLACEMENT FOLLOWING CONSTRUCTION. ALL COSTS FOR THIS WORK SHALL BE SUBSIDIARY TO THE LUMP SUM PRICE BID FOR "SITE RESTORATION".

APPROVED AS NOTED
 BY CITY ENGINEER OF WICHITA

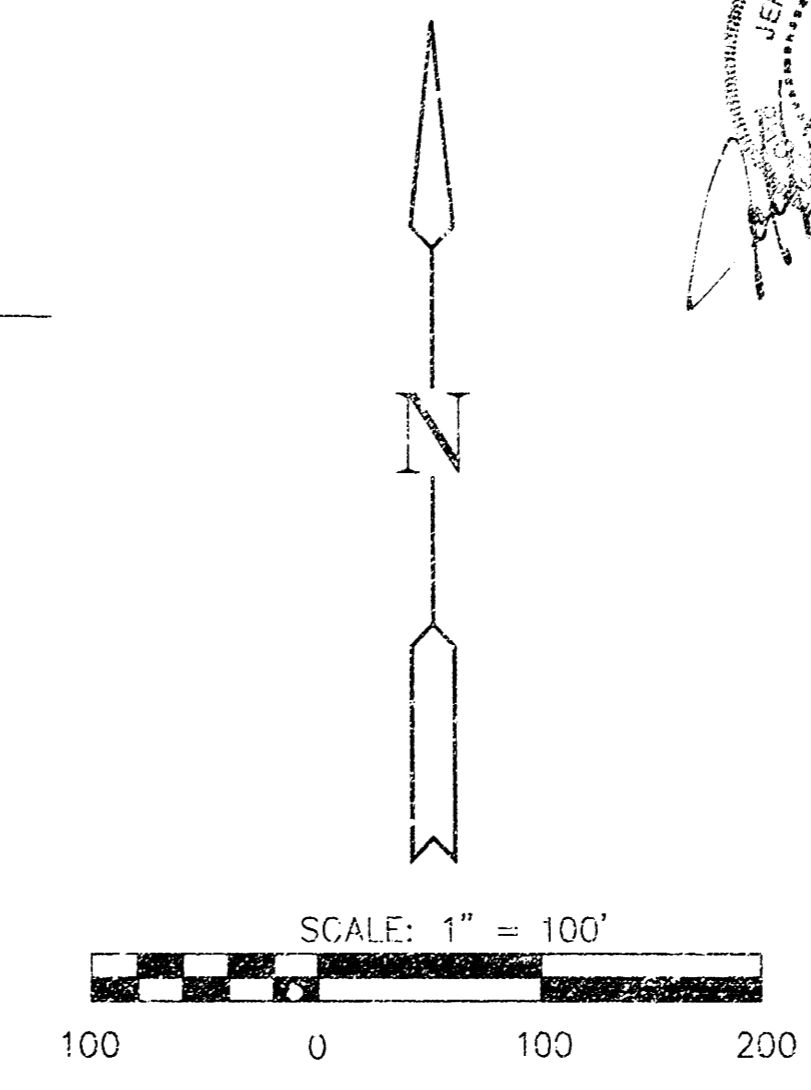
STORM SEWERS JRH 9/5/01

NOTE TO CONTRACTOR

INSPECTION AND TESTING FOR THIS PROJECT IS TO BE PROVIDED BY A LICENSED CONSULTING ENGINEERING FIRM UNDER CONTRACT WITH THE OWNER/DEVELOPER. SAID INSPECTION TO BE IN ACCORDANCE WITH THE CITY OF WICHITA STANDARD CONSTRUCTION ENGINEERING PRACTICES AND CERTIFIED BY A LICENSED PROFESSIONAL ENGINEER. NO WORK SHALL BE PERFORMED IN DEDICATED EASEMENTS OR THE PUBLIC RIGHT-OF-WAY BY THE CONTRACTOR WITHOUT SUCH INSPECTION WORK SHALL ANY WORK BE COMMENCED IN DEDICATED EASEMENTS OR PUBLIC RIGHT-OF-WAY WITHOUT WRITTEN AUTHORIZATION BY THE CITY ENGINEER.



AS BUILT: MAY 2002




INDEX TO DRAWINGS

SHEET NO.	DESCRIPTION
1	TITLE SHEET
2	TYPE 1 CURB INLET DETAILS
3	PLAN/PROFILE LINES 1&2
4	FINAL PLAT

BENCHMARKS

BM #1 - "Ø" BRASS DISC @ W HUBGUARD RCBC, NORTH OF I-235 ON MERIDIAN ELEV. = 100.15 (1287.55)

BM #2 - "Ø" CUT TO W SIDE MERIDIAN E OF NE COR. LOT 1, BLK. 1, YMCA SOUTH ADDITION ELEV. = 96.48 (1283.88)



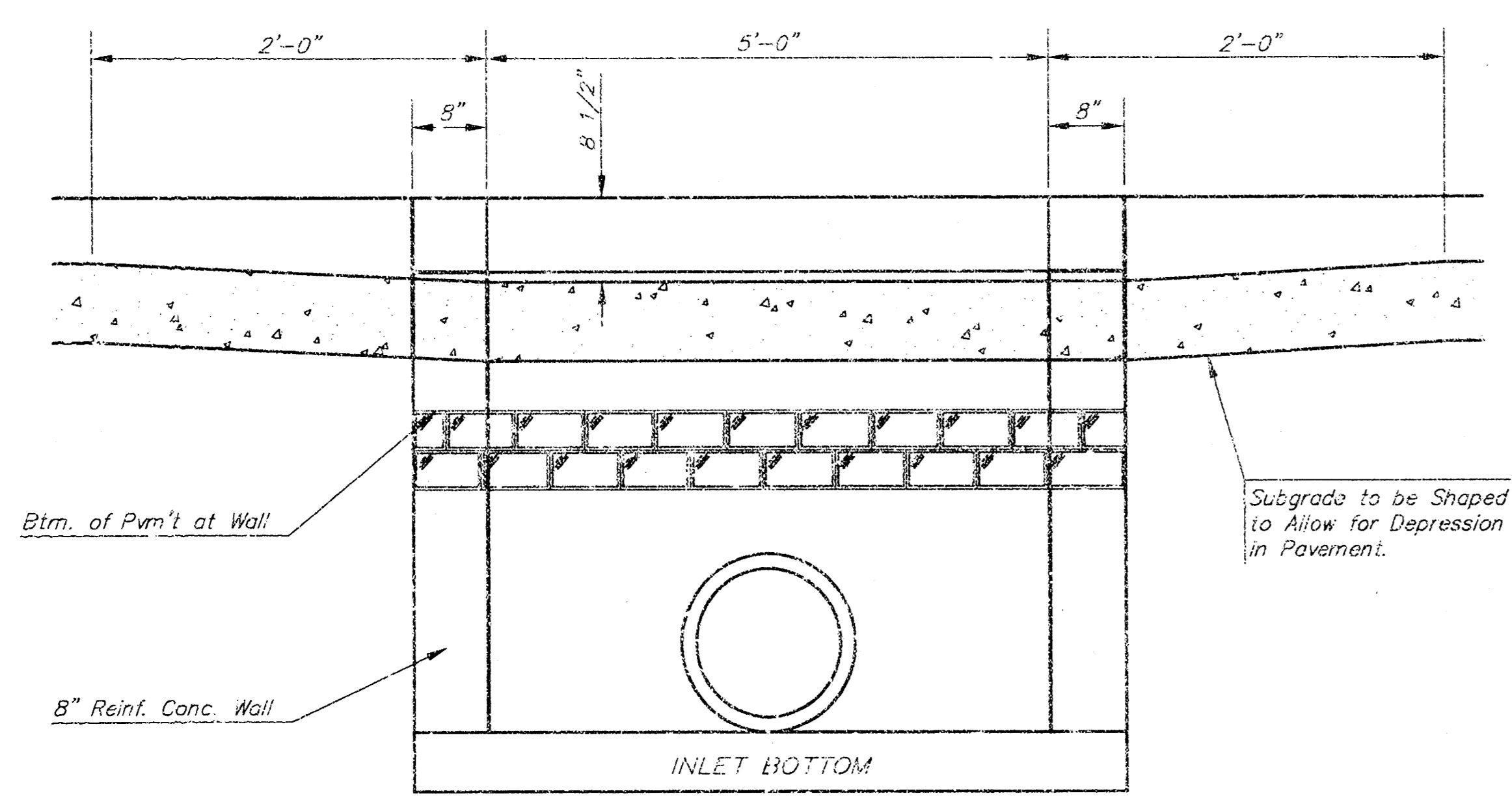
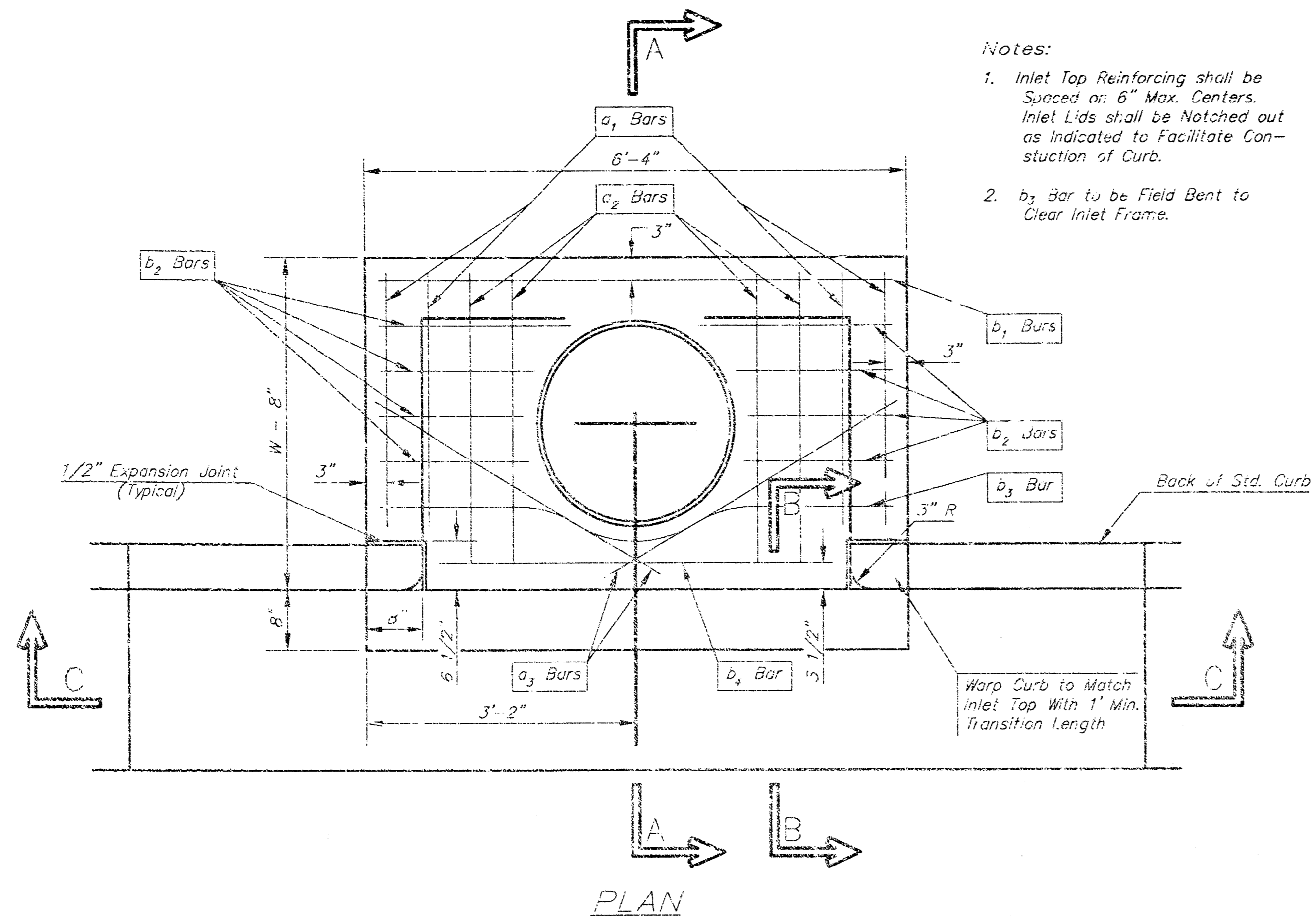
WENDY'S AT YMCA SOUTH ADDITION
PROJECT NAME

STORM SEWER TITLE SHEET
SHEET TITLE

JTC	GJR	JTC
DESIGN BY:	DRAWN BY:	CHECKED BY:

411 N. WEBB ROAD
WICHITA, KS. 67206
316-694-9600

JUNE 2001	01114-DT	1 / 4
DATE	DRAWING NAME	SHEET / OF



SECTION C-C

STEEL SCHEDULE

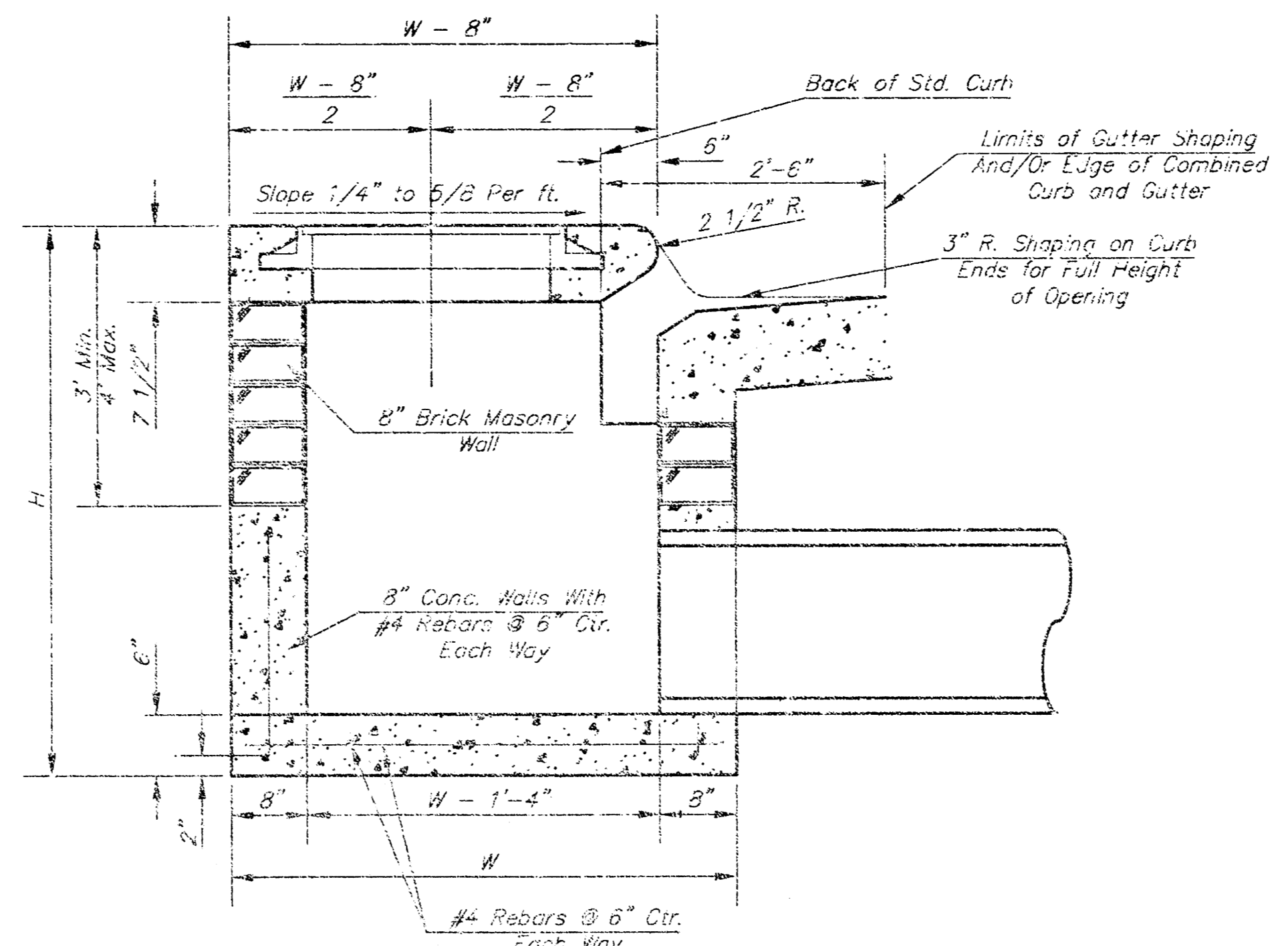
BAR NUMBER	SIZE	LENGTH										WT. Lbs.	
		a ₁	a ₂	a ₃	b ₁				b ₂	b ₃	b ₄		
1	#4	5'-7"	6'-7"	4'-0"	6'-1"	-	-	-	-	1'-9"	6'-2"	4'-8"	60±
2	#4	7'-7"	8'-7"	5'-0"	6'-1"	-	-	-	1'-9"	6'-2"	4'-8"	81±	
3	#4	9'-7"	10'-7"	6'-0"	6'-1"	-	-	-	1'-9"	6'-2"	4'-8"	101±	
4	#4	11'-7"	12'-7"	7'-0"	6'-1"	-	-	5'-1"	1'-9"	6'-2"	4'-0"	121±	
5	#4	13'-7"	14'-7"	8'-0"	6'-1"	-	-	6'-1"	1'-9"	6'-2"	4'-8"	141±	

Note: a₃ Bars to be Placed Approx. 2" Below Top of Inlet Cover.

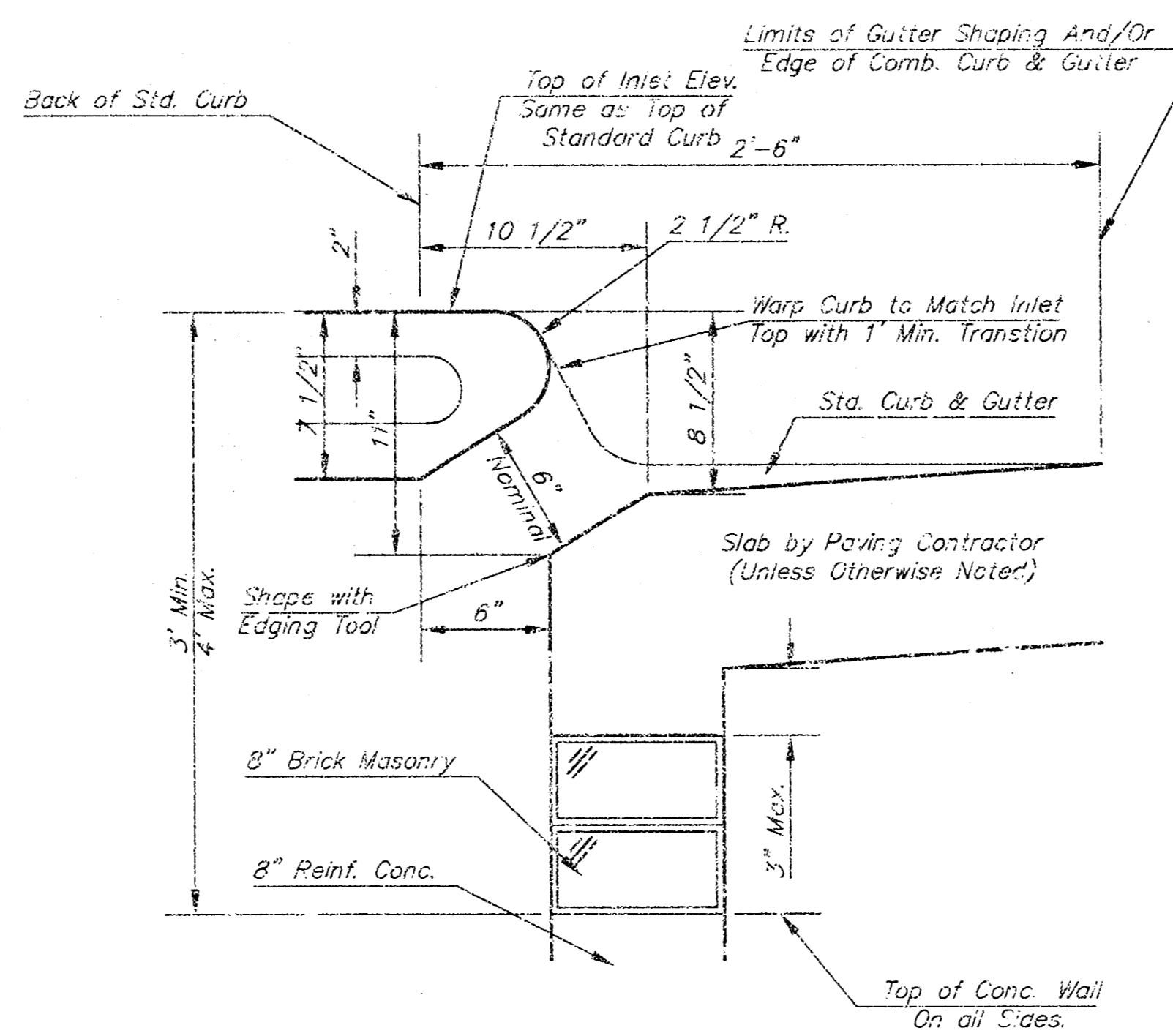
STANDARD CURB INLET PRECAST TOPS			
W	PRE-CAST TOP SIZE	PIPE SIZE	CU. YD. CONC.
4'-4"	3'-8" 6'-4" 7 1/2"	21" & SMALLER	0.36±
5'-4"	4'-8" 6'-4" 7 1/2"	24" & 30"	0.51±
6'-4"	5'-8" 6'-4" 7 1/2"	36" & 42"	0.64±
7'-4"	6'-8" 6'-4" 7 1/2"	48" & 54"	0.77±
8'-4"	7'-8" 6'-4" 7 1/2"	50" & 66"	0.90±

Notes:

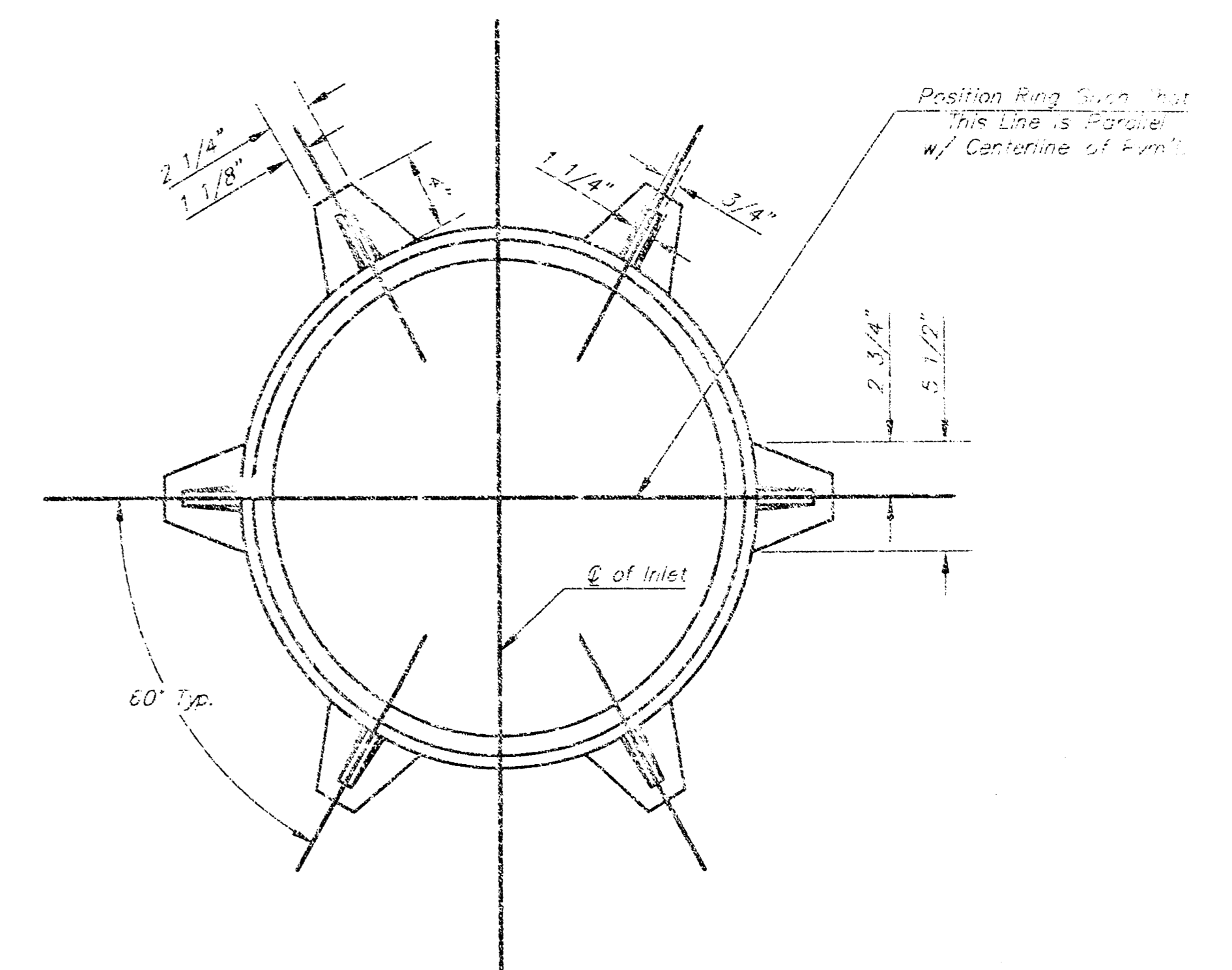
- Inlet Top Reinforcing shall be Spaced at 8" Max. Centers. Inlet Lids shall be Notched out as Indicated to Facilitate Construction of Curb.
- b₂ bar to be Field Bent to Clear Inlet Frame.



SECTION A-A

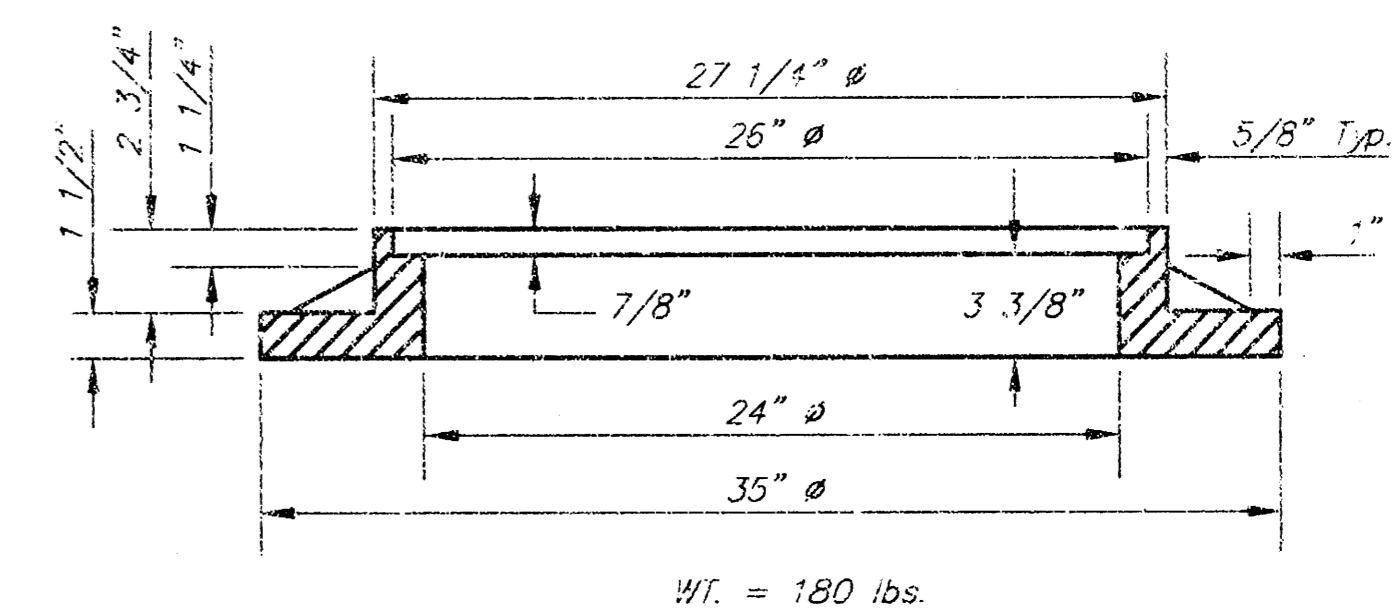


SECTION B-B



MANHOLE RING AND COVER

WT. = 180 lbs.
*See City of Wichita Standard Manhole Ring and Cover Detail Sheet for Cover Details to Be Used With Inlet Frame.



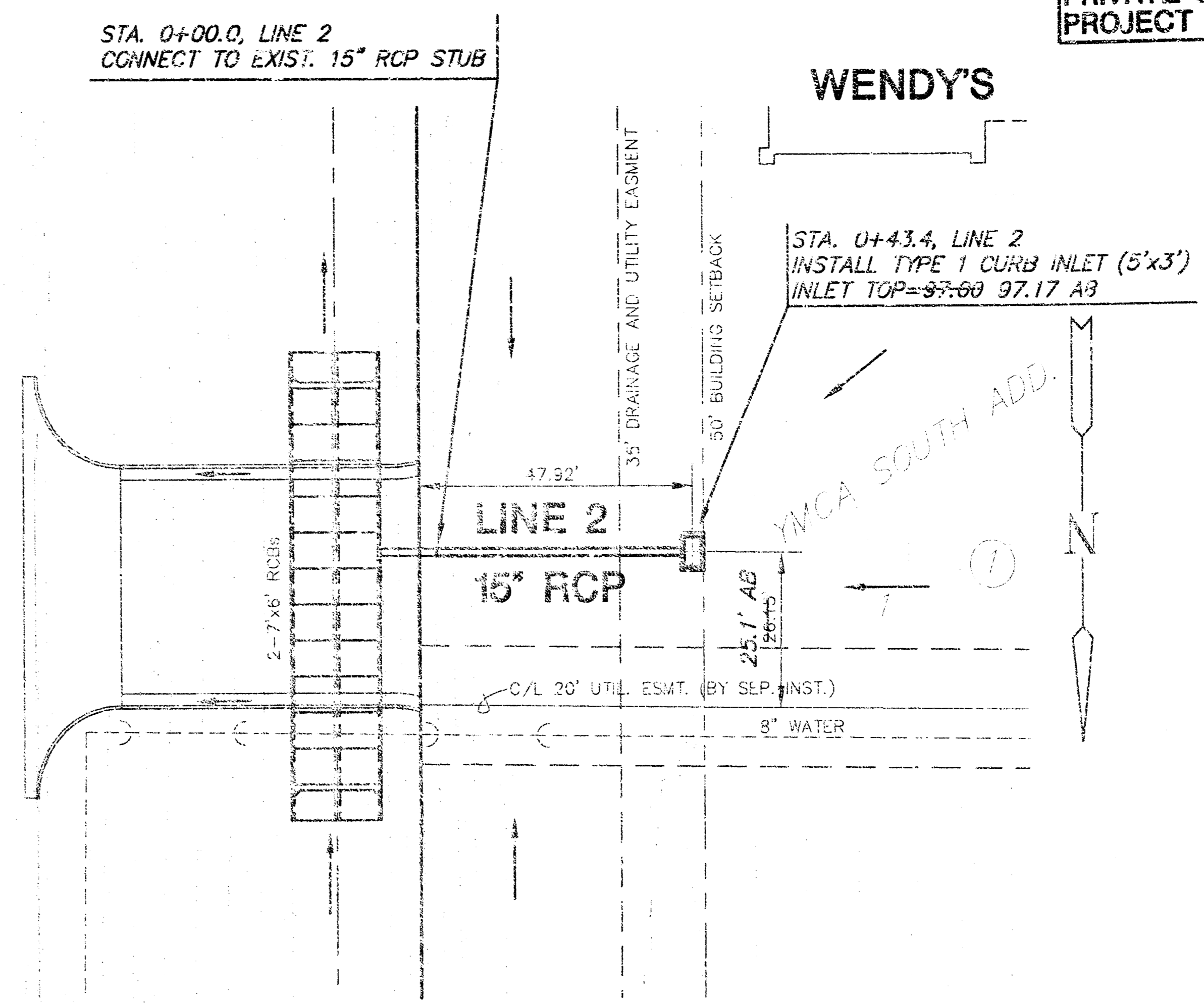
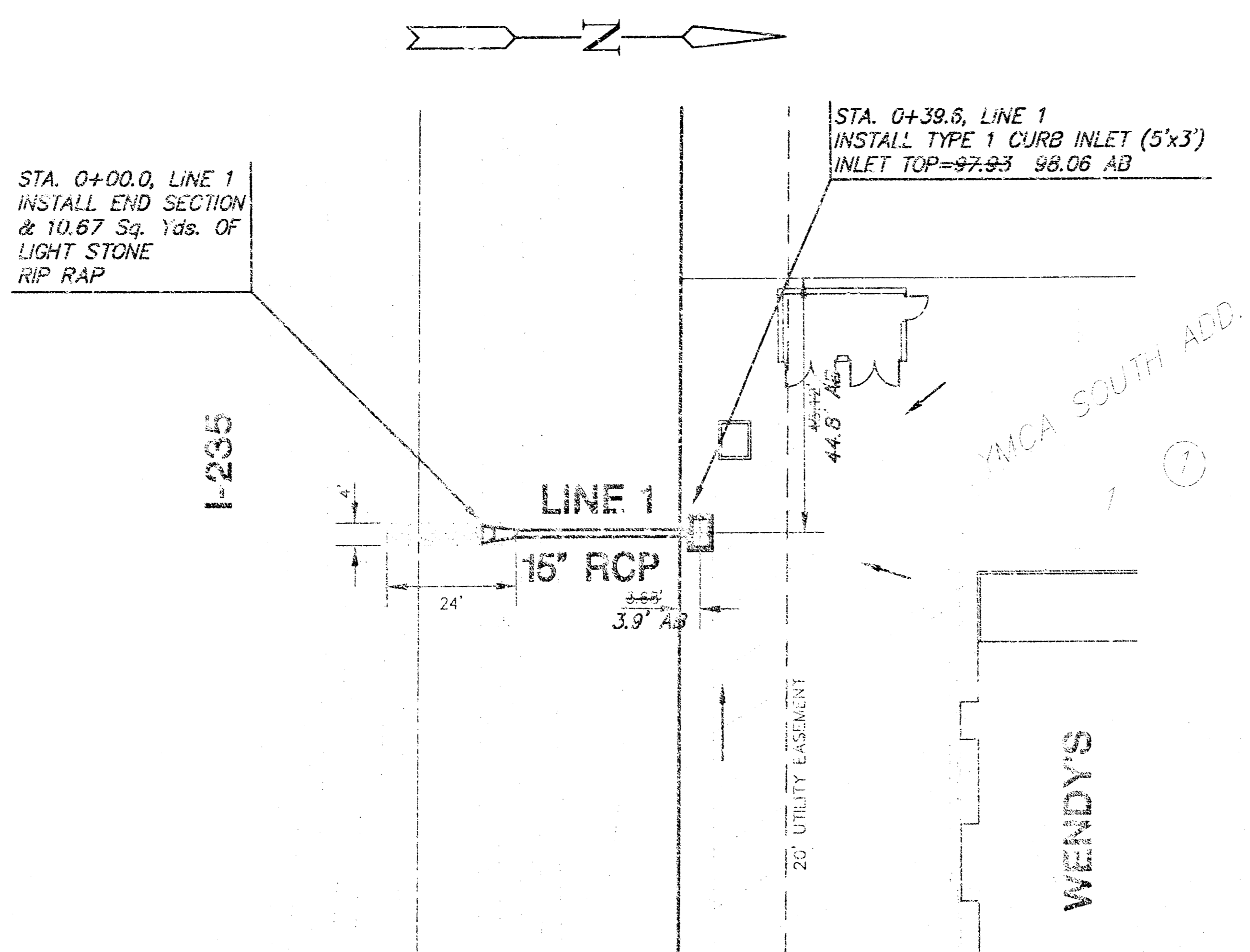
BENDING DIAGRAM

GENERAL NOTES

- Concrete tops to be installed on this mortar cushion to insure full support along brick walls. Concrete tops may be cast in place or precast. Concrete used for inlet construction shall be concrete pavement mix.
- Contractor shall have the option of constructing 8" brick masonry walls between the concrete inlet base and top on this inlet when W=6'-4" and H=7'-0" or less.
- Inlet invert shall be shaped with 8 sack sand mix concrete to create flow channels and to increase hydraulic efficiency such that the inlet will be self cleaning between all inlet and/or outlet pipes.
- The ends of all pipes installed in inlets shall be cut off flush with the inside face of the inlet wall.

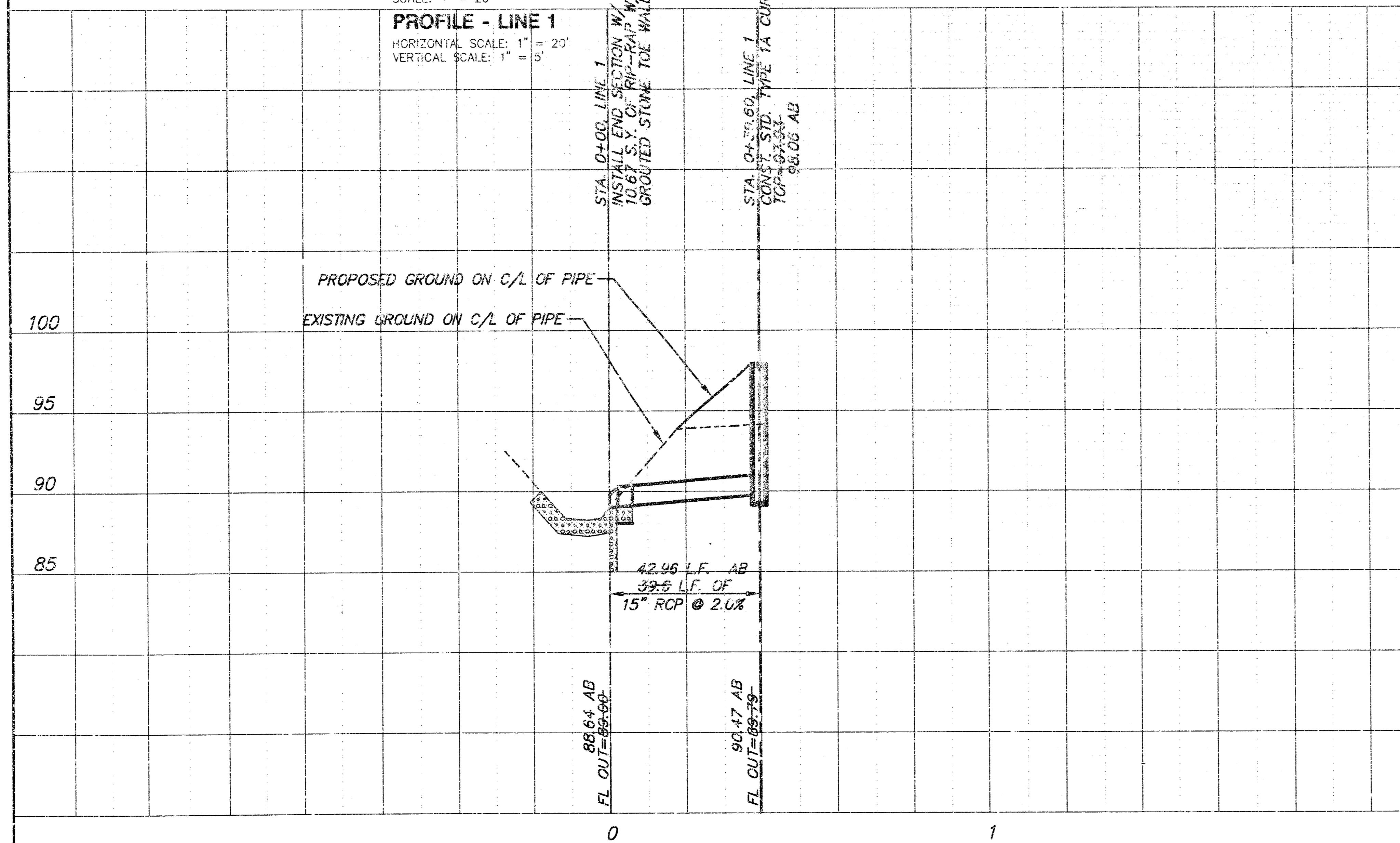
<p>CITY ENGINEER'S OFFICE CITY HALL - SEVENTH FLOOR 455 NORTH MAIN STREET WICHITA, KANSAS 67202 (316) 268-4281 (316) 268-4114 FAX</p>	<p>STANDARD TYPE 1 CURB INLET OPENING = 6" x 5'-0"</p>	
	<p>M. E. LINDEBAK P.E. - CITY ENGINEER</p>	
	<p>PROJECT NUMBER 1155PPS</p>	<p>INSECT CODE 607861</p>
	<p>DATE JULY 01</p>	<p>SHEET 2 OF 4</p>

WENDY'S AT YMCA SOUTH ADD.
PRIVATE STORM WATER SEWER
PROJECT NO. 1165PPS



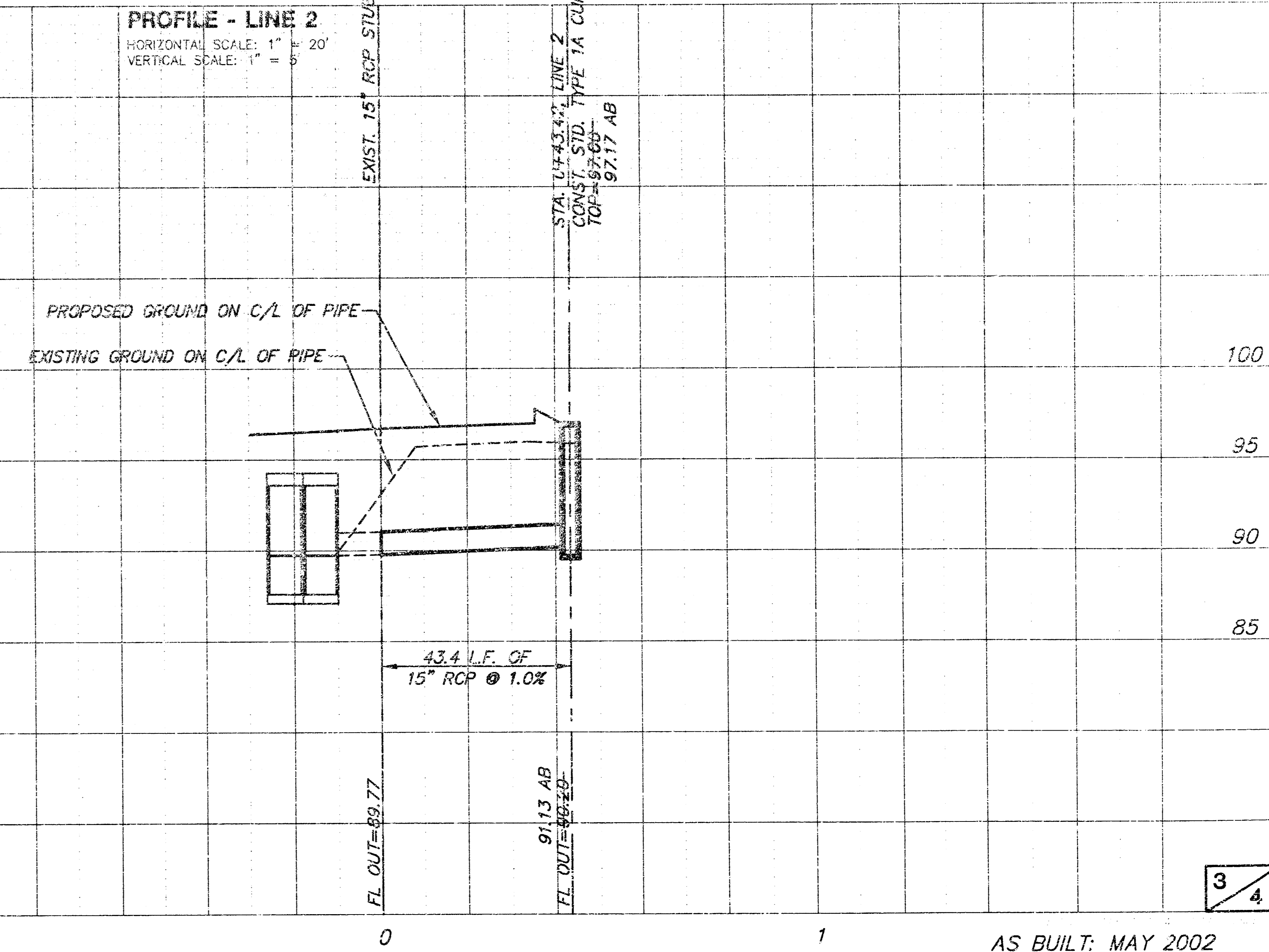
PLAN - LINE 1
SCALE: 1" = 20'

PROFILE - LINE 1
HORIZONTAL SCALE: 1" = 20'
VERTICAL SCALE: 1" = 5'



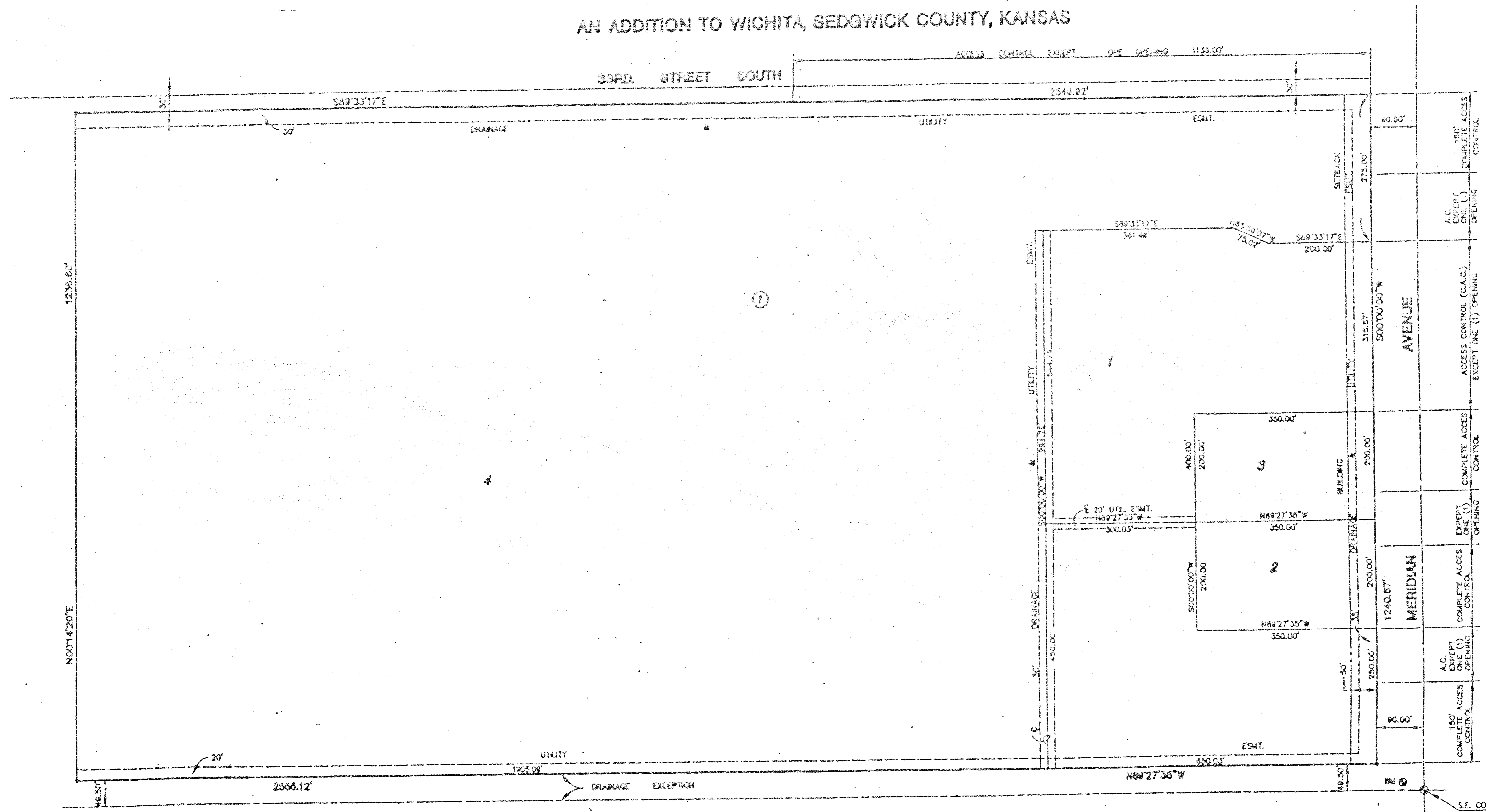
PLAN - LINE 2
SCALE: 1" = 20'

PROFILE - LINE 2
HORIZONTAL SCALE: 1" = 20'
VERTICAL SCALE: 1" = 5'



S:\PROJECTS\1165PPS\1165PPS.dwg 4/24/02 11:27:27 AM

FINAL PLAT OF
YMCA SOUTH ADDITION
AN ADDITION TO WICHITA, SEDGWICK COUNTY, KANSAS



SCALE 1" = 100'

BUILDING SETBACKS PER CHAPTER 104 AMENDMENT #1

LEGEND

- 804

MINIMUM PAD ELEVATION			
LOT	BLOCK	CITY DATUM	8555 DATUM
1	1	105.0	1237.4
2	1	105.0	1237.4
3	1	105.0	1237.4
4	1	105.0	1237.4

S.E. COR., N.E. 1/4
SEC. 12, T28S, R14

B.M. CITY STANDARD N.W. CORNER R.C.B. ON
MERIDIAN N. OF I-235.
ELEV. = 1287.55