

# PRIVATE STORMWATER SEWER IMPROVEMENTS

to serve

## VIA CHRISTI - ST. JOSEPH CITY OF WICHITA, KANSAS

Michael E. Lindesak, P.E. City Engineer

Private Project Number  
1170 PPS (607881)

DECEMBER 2001

### Benchmark

- #1 City of Wichita Benchmark: SW Cor. of the intersection of Harry & Hillside on the South concrete traffic light signal base. 57.40 ft. South of Centerline. 33.40 ft. West of Centerline. Elev. = 1271.9 City Datum
- #2 " " Located at the NW intersection of Clifton & Harry. Elev. = 130.51 City Datum

### Sheet Index

|                   |   |
|-------------------|---|
| Title Sheet       | 1 |
| Line 1            | 2 |
| Drop Inlet Detail | 3 |
| Copy of Plat      | 4 |

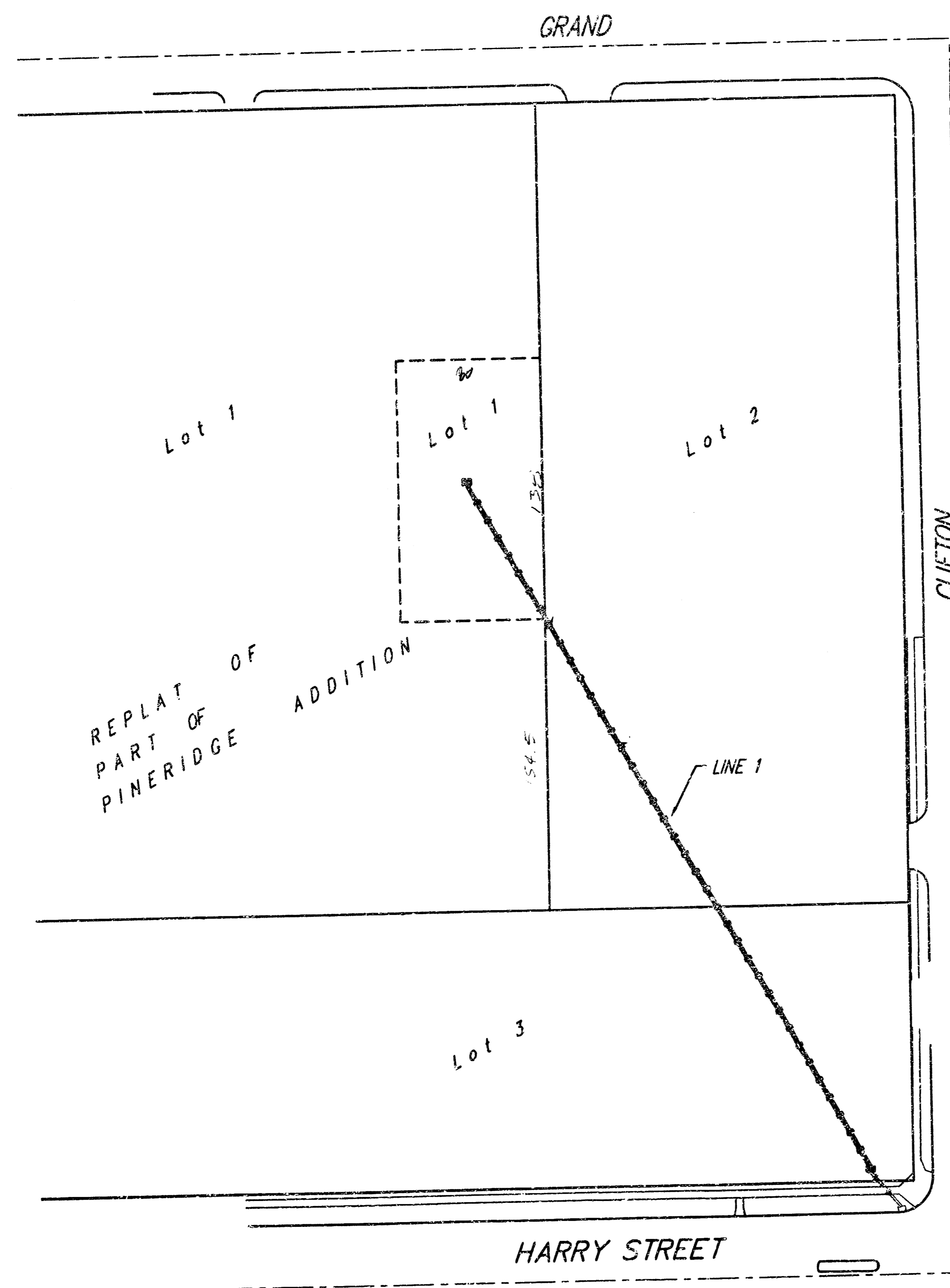
### General Notes:

- Contractor will be required to provide notice to utility companies a minimum of twenty-four (24) hours prior to any excavation, as follows:  

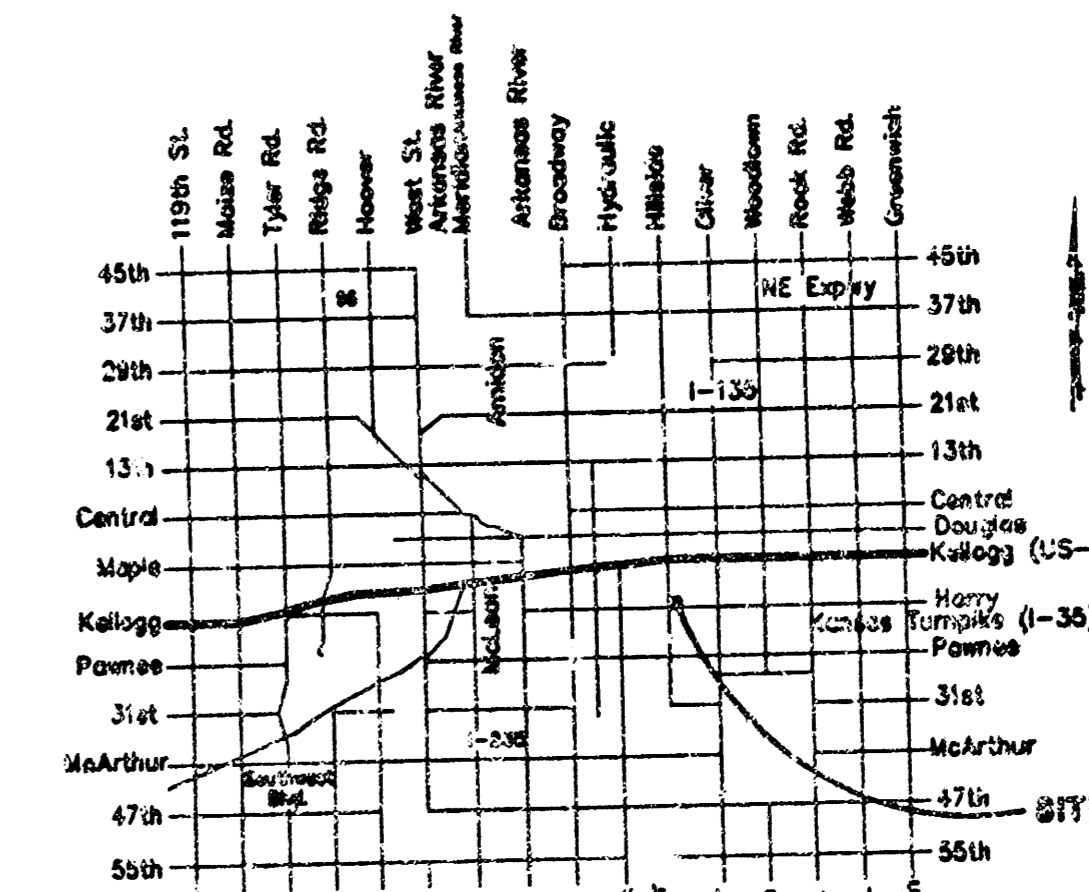
|                 |          |
|-----------------|----------|
| Kansas One-Call | 687-2470 |
|-----------------|----------|

The Contractor must notify the following in case of an emergency:

|                                     |                |
|-------------------------------------|----------------|
| Cox Communications                  | 262-0661       |
| Kansas Gas Service                  | 383-8600       |
| Kansas Gas & Electric Company       | 381-8600       |
| Peoples Gas Company                 | 942-8350       |
| Southwestern Bell Telephone Company | 1-800-344-7233 |
| City of Wichita Water Dept.         | 268-4928       |
| City of Wichita Traffic Engineering | 269-4446       |
- Underground utility service lines and overhead utility pole lines are to be adjusted as necessary by others prior to construction unless the plans specifically call for their adjustment by the Contractor or unless the plans specifically identify a utility to be adjusted by its owner during construction. Existing utilities and their location, as shown on the plans, represent the best information obtainable for design. The Contractor will be required to work around existing utilities within the right-of-way which do not conflict with proposed construction.
- Contractor shall not start work on the project until the project inspector is assigned to the project and is present on the site. Any work done without inspection will be required to be uncovered for inspection.
- The Contractor shall give all property owners and/or tenants of developed property abutting the construction of this project a minimum of ten (10) days advance notice prior to start of construction.
- The Contractor shall be responsible for preserving property irons. The Contractor will be required to re-establish any property irons which are damaged or destroyed by his construction operations. Such irons shall be re-established by a licensed land surveyor in accordance with state laws.
- Rubble from the removal of miscellaneous structures and excess excavation which is to be wasted shall be disposed of on sites to be provided by the Contractor. These sites shall be approved by the Engineer as to suitability, appearance and site location. Locations that, in the opinion of the Engineer, will leave an unsightly appearance will not be approved. All disposal sites must be approved by the Kansas Department of Health and Environment. Material either stockpiled or disposed of in a flood plain would require a Kansas State Board of Agriculture permit. Any material dumped in water of the United States or wetlands is subject to U.S. Corps. of Engineers permitting regulations. Any material buried or stockpiled beyond approved construction limits would require additional archaeological investigations unless buried in a previously approved borrow location.



### Location Map



APPROVED AS NOTED  
BY CITY ENGINEER OF WICHITA

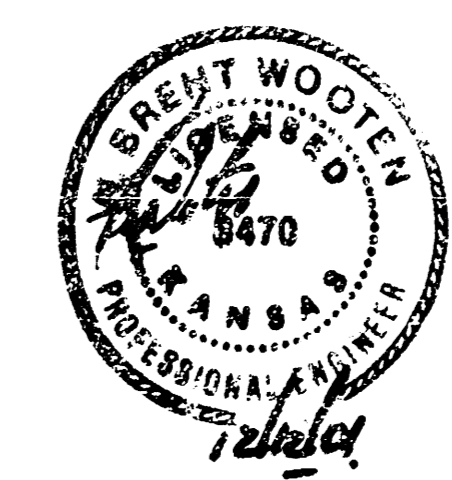
Storm Sewer VRH 12/14/01

NOTE TO CONTRACTORS

Inspection and testing for this project is to be provided by a Licensed Consulting Engineering Firm under contract with the Owner/Developer. Said inspection to be in accordance with the City of Wichita standard construction engineering practices and certified by a Licensed Professional Engineer. No work shall be performed in dedicated easements or public right-of-way by the Contractor without such inspection nor shall any work be commenced without written authorization by the City Engineer. All Construction and Materials shall comply with the City of Wichita Specifications and Standards (on file and available in the City Engineer's Office).

Booked  
E-10  
1/6/04  
RDL

As Built 3/02. KK



12/13/2001  
BAUGHMAN COMPANY P.A.  
ENGINEERING, SURVEYING, & PLANNING  
216-262-7271 • 216 DALLAS • WICHITA, KANSAS 67211  
F:\ENG\WACHRISTI-STJOE\SWSCOV.DWG - SCL

#1 City of Wichita Benchmark: SW Cor. of the Intersection of Harry & Hillsida on the South concrete traffic right signal base. 57.40 ft. South of Centerline. 38.40 ft. West of Centerline. Elev. = 127.13 City Datum

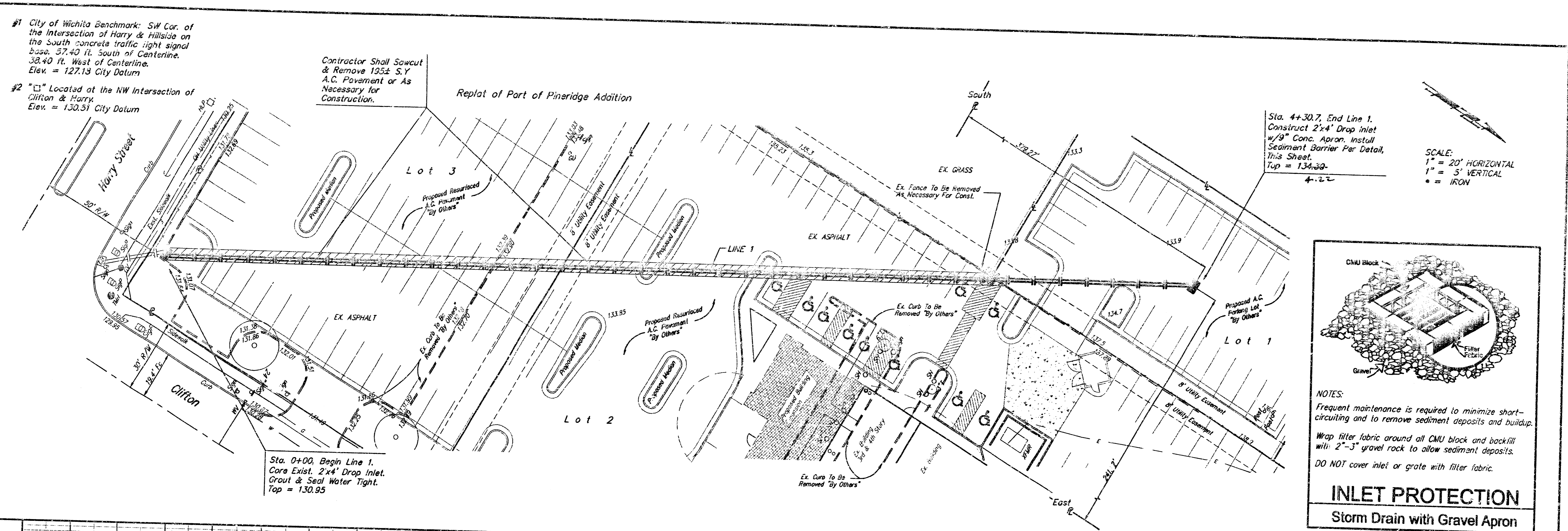
#2 " " Located at the NW Intersection of Clifton & Harry Elev. = 130.31 City Datum

Contractor Shall Sawcut & Remove 195± S.Y. A.C. Pavement or As Necessary for Construction.

Replat of Part of Pineridge Addition

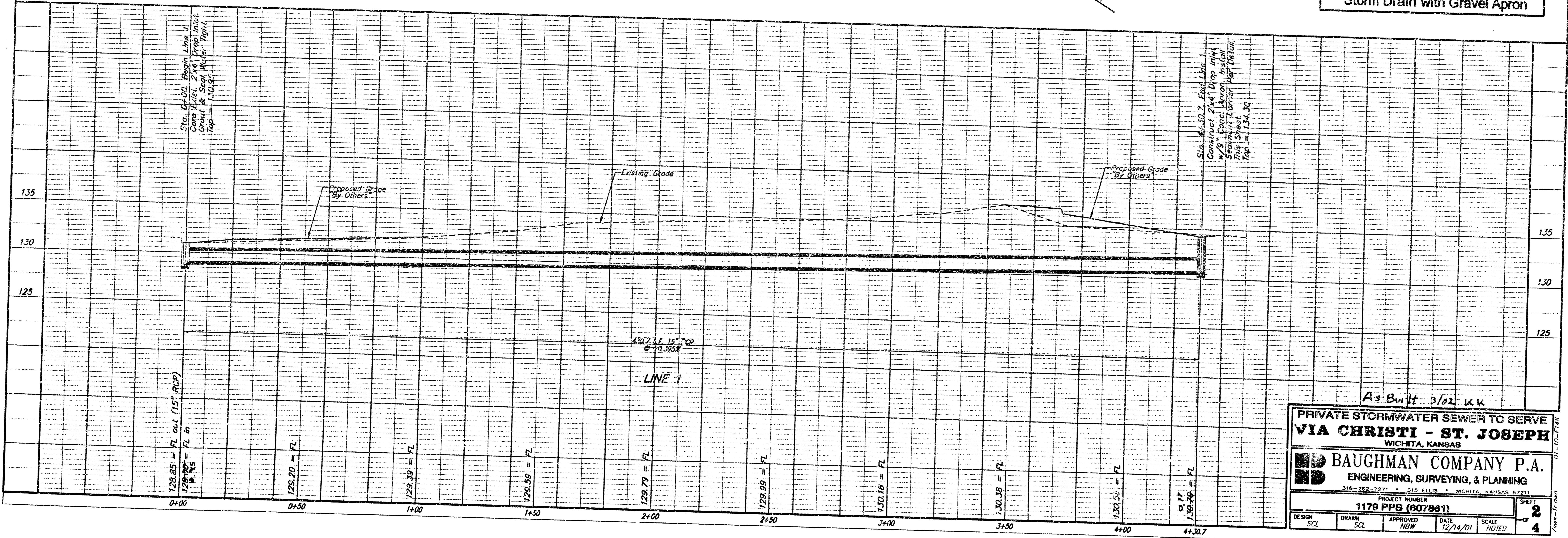
Sta. 4+30.7, End Line 1. Construct 2'x4' Drop Inlet w/9" Conc. Apron. Install Sediment Barrier Per Detail, This Sheet. Top = 134.30

SCALE:  
1" = 20' HORIZONTAL  
1" = 3' VERTICAL  
• = IRON



**INLET PROTECTION**  
Storm Drain with Gravel Apron

NOTES:  
Frequent maintenance is required to minimize short-circuiting and to remove sediment deposits and buildup.  
Wrap filter fabric around all CMU block and backfill with 2"-3" gravel rock to allow sediment deposits.  
DO NOT cover inlet or grate with filter fabric.



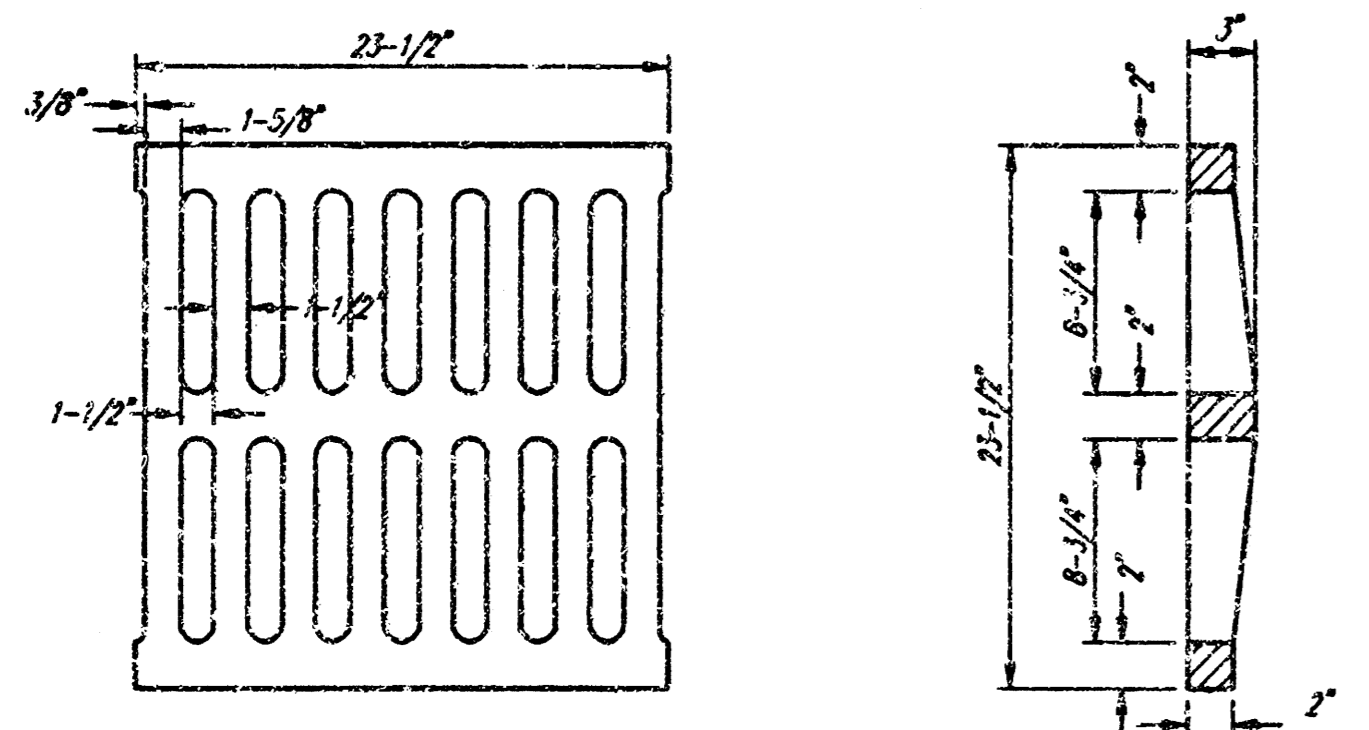
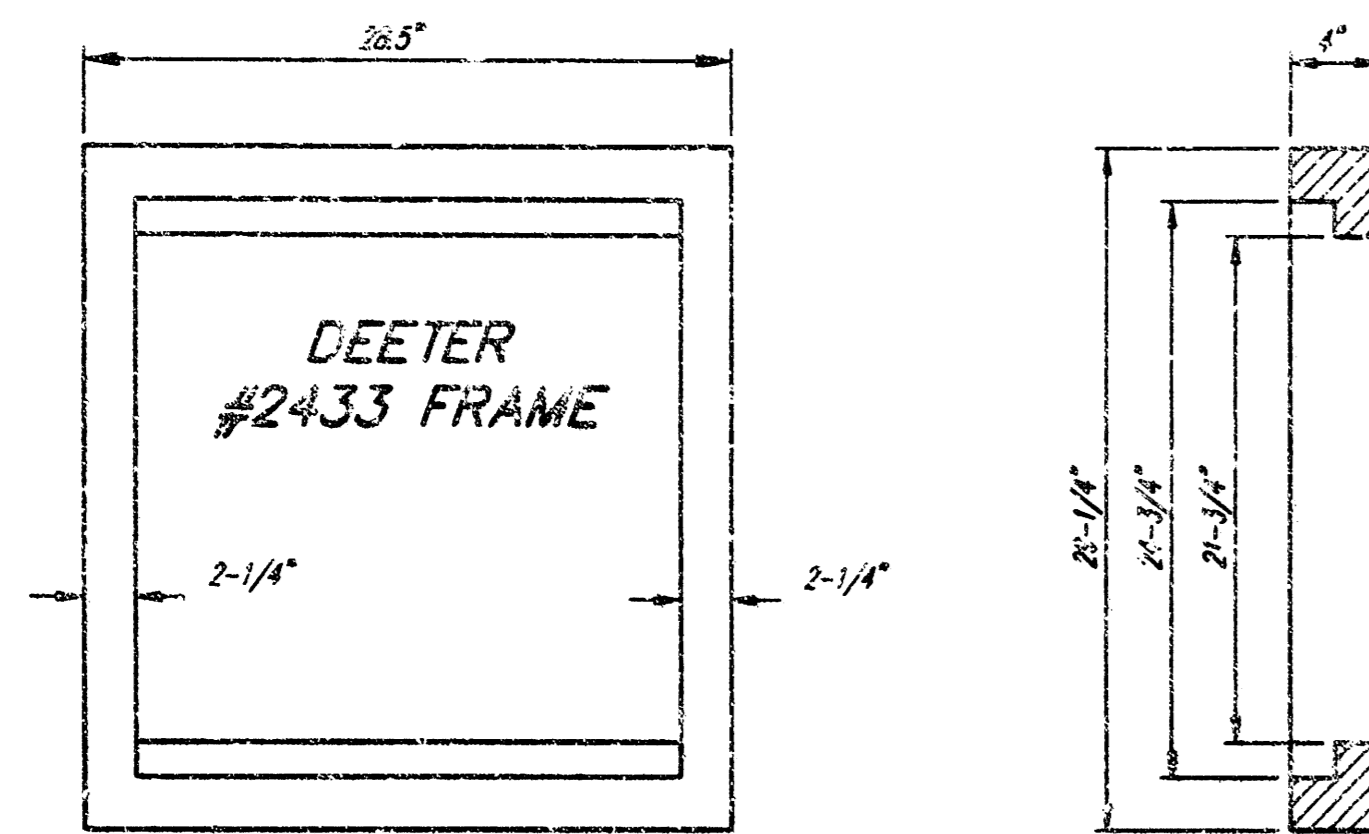
As Built 3/02 KK

PRIVATE STORMWATER SEWER TO SERVE  
**VIA CHRISTI - ST. JOSEPH**  
WICHITA, KANSAS

**BAUGHMAN COMPANY P.A.**  
ENGINEERING, SURVEYING, & PLANNING  
318-282-7271 • 315 ELLIS • WICHITA, KANSAS 67211

PROJECT NUMBER  
**1179 PPS (007861)**

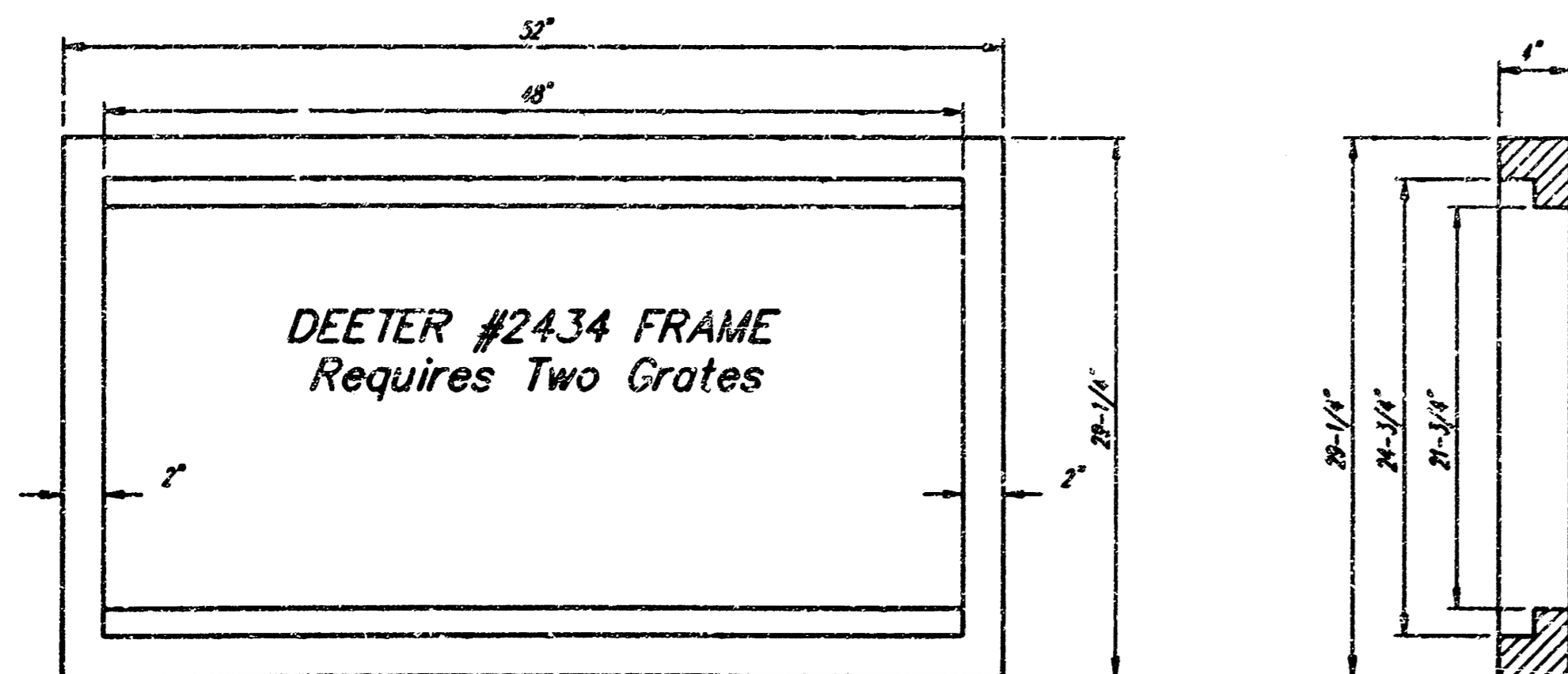
|               |              |                 |                  |                |                       |
|---------------|--------------|-----------------|------------------|----------------|-----------------------|
| DESIGN<br>SCL | DRAWN<br>SCL | APPROVED<br>NBW | DATE<br>12/14/01 | SCALE<br>NOTED | SHEET<br>2<br>OF<br>4 |
|---------------|--------------|-----------------|------------------|----------------|-----------------------|



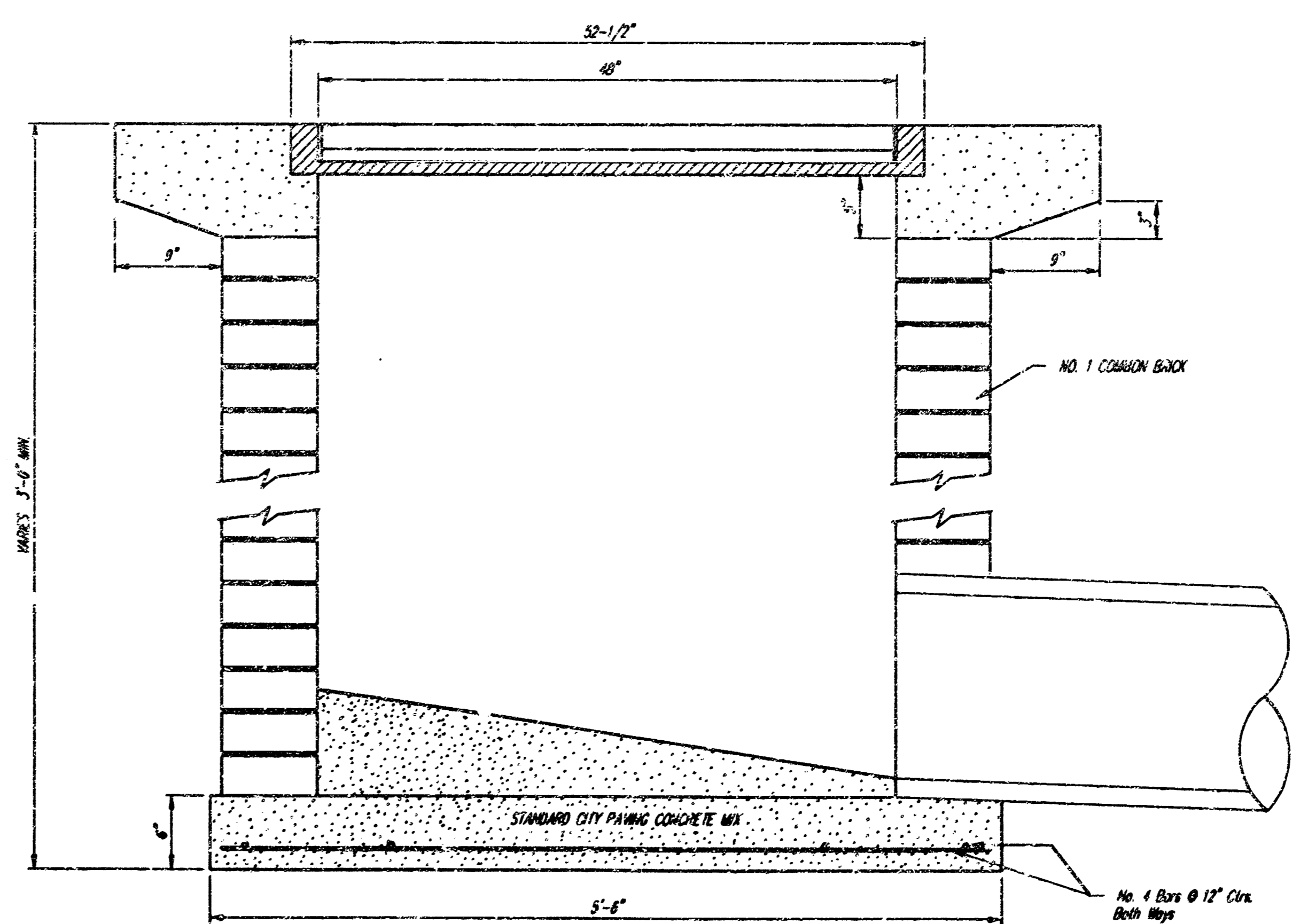
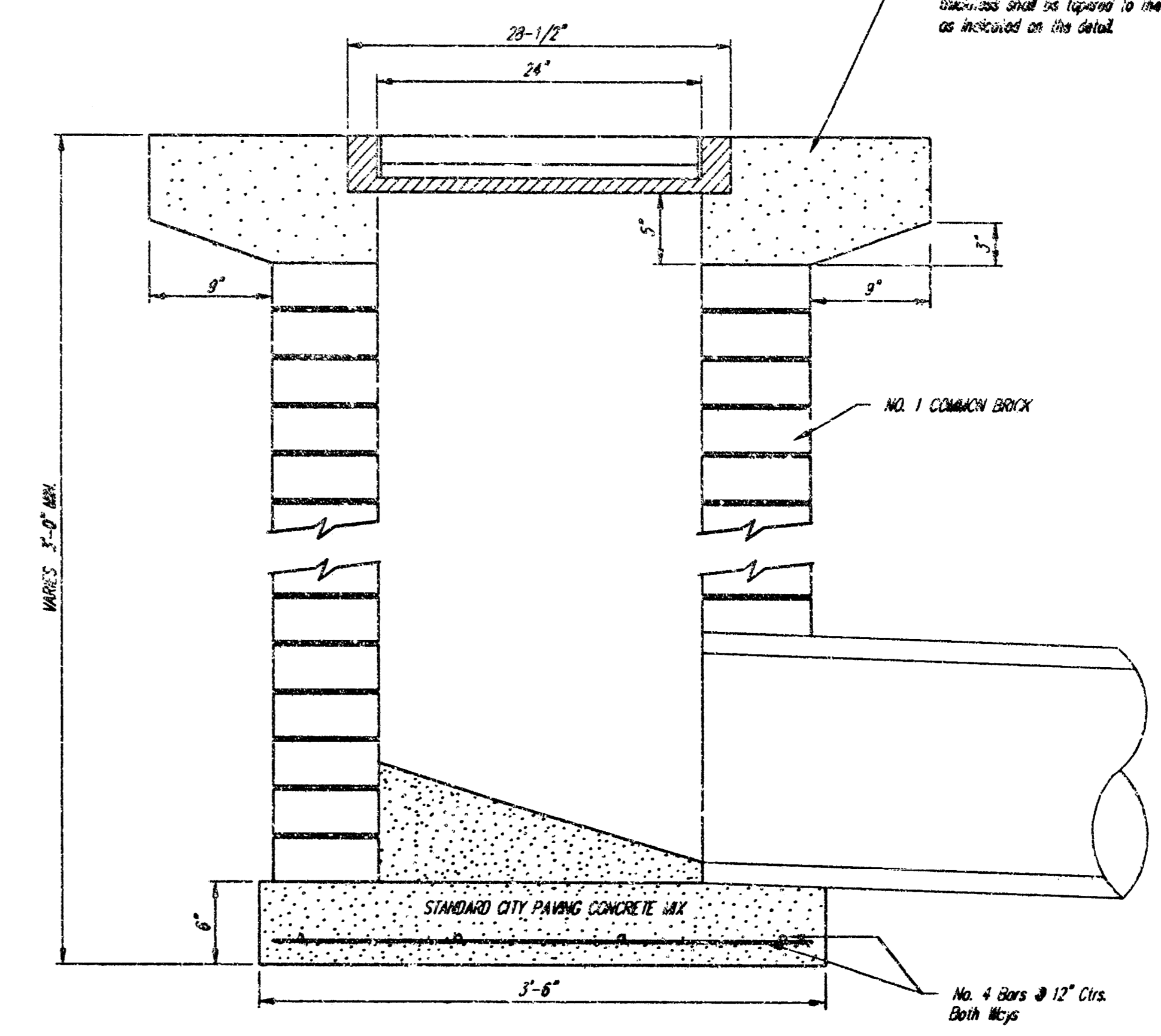
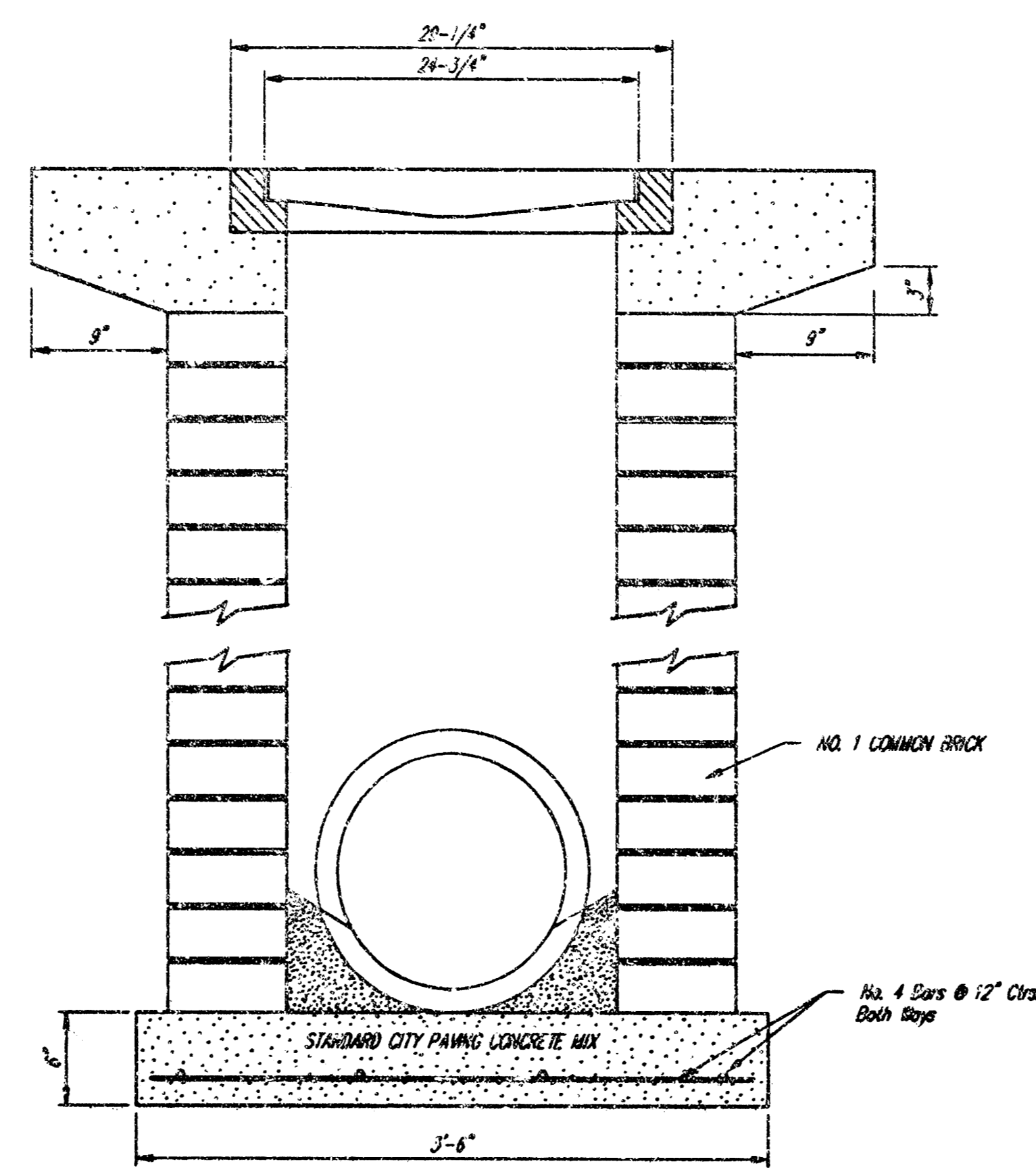
DEETER #2433 GRATE

24" x 24" Frame and Grate Detail

NOTE: Grates shall be imprinted on the top surface with "CITY OF WICHITA" using letters at least 1" in height. Other marking methods may be approved by the engineer.



Double 24" x 24" Frame Detail



City of Wichita Standard  
**Drop Inlet**

**BAUGHMAN COMPANY P.A.**  
ENGINEERING, SURVEYING, & PLANNING

316-262-7271 • 510 ELLIS • WICHITA, KANSAS 67201

PROJECT NUMBER  
**1179 PPS (607861)**

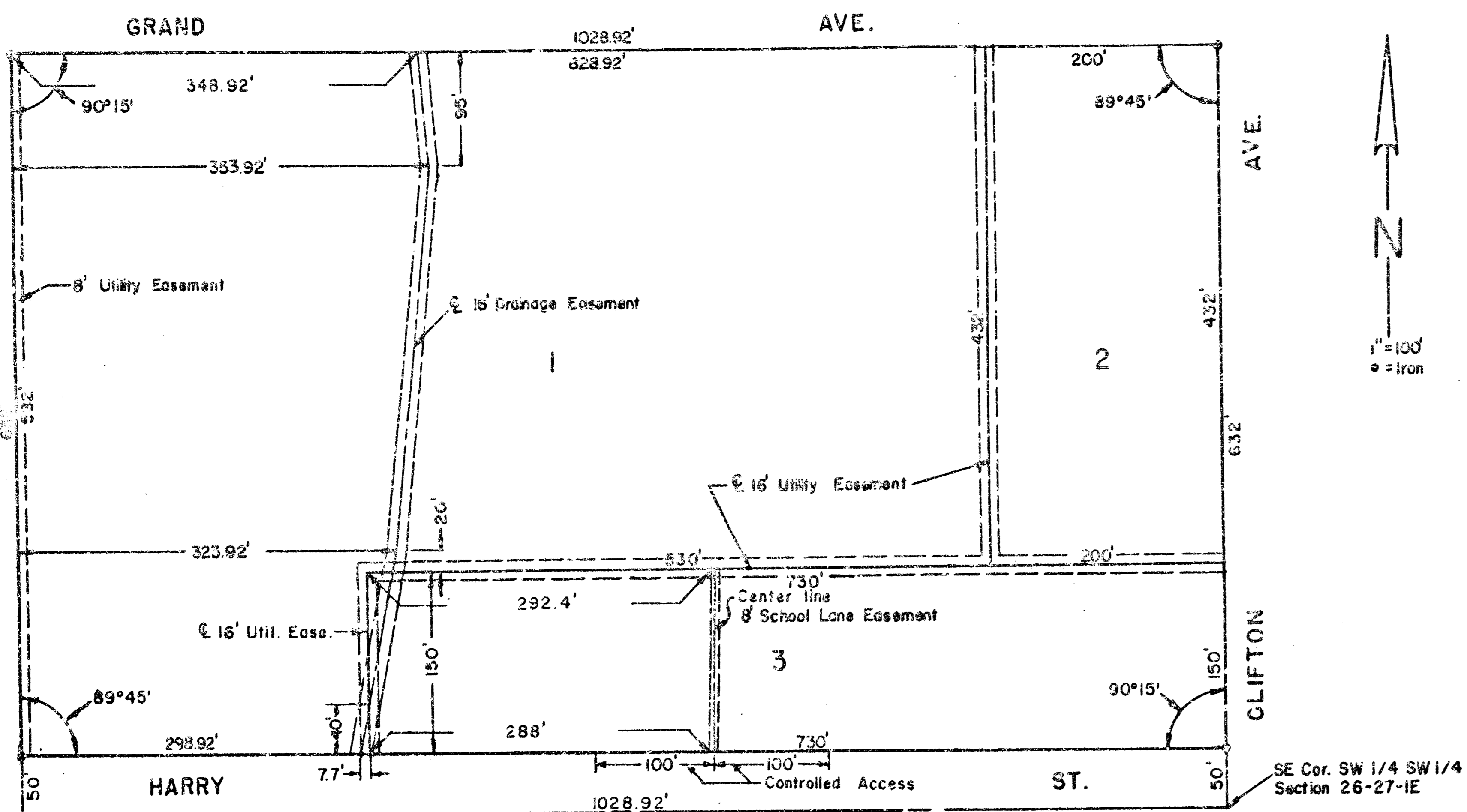
DESIGN: G.O.W.    DRAWN: Staff    APPROVED:    DATE: 11/19/01    SCALE: NONE

SHEET **3** OF **4**

17-10-E-16

# REPLAT OF PART OF PINERIDGE ADDITION

TO WICHITA, SEDGWICK COUNTY, KANSAS



STATE OF KANSAS )  
COUNTY OF SEDGWICK ) SS:

I, Kenneth O. Taylor, Civil Engineer in said State and County, do hereby certify that I have surveyed and platted "REPLAT OF PART OF PINERIDGE ADDITION" to Wichita, Sedgwick County, Kansas, and that the accompanying plat is a true and correct exhibit of said survey, described as follows: All of Pineridge Addition in Sedgwick County, Kansas, except Lots 1, 2, 3 and 4 and the west 61.66 feet of Lot 5, all in Block A.

Know all men by these presents that The Catholic Diocese of Wichita, a Non-profit corporation, by Leo C. Byrne, President, has caused the land described in the Civil Engineer's Certificate to be platted into lots and a street to be known as "REPLAT OF PART OF PINERIDGE ADDITION" to Wichita, Sedgwick County, Kansas. Easements are hereby granted as indicated on the plat for the construction and maintenance of all public utilities. The drainage easement is hereby granted for drainage purposes. The school lane easement as indicated on the plat is hereby granted for ingress and egress. The street is hereby dedicated to and for the use of the public. The City of Wichita is hereby granted complete vehicular access control on the north side of Harry Street 100 feet on either side of the center line of the school lane easement, as indicated on the plat.

THE CATHOLIC DIOCESE OF WICHITA,  
A Non-profit Corporation  
  
Leo C. Byrne, President

ATTEST:  
  
Charles F. Walsh, Secretary

STATE OF KANSAS )  
COUNTY OF SEDGWICK ) SS:

Be it remembered, that on this \_\_\_\_\_ day of \_\_\_\_\_, A.D., 19\_\_\_\_, before me the undersigned, a Notary Public in and for the County and State aforesaid, came Leo C. Byrne, President of The Catholic Diocese of Wichita, a Non-profit Corporation, to me personally known to be the same person who executed the within instrument as President of said corporation, and such person duly acknowledged the execution of the same as President, for and on behalf of, and as the act and deed of said corporation.

In testimony whereof, I have hereunto set my hand and affixed my official seal the day and year above written.  
  
\_\_\_\_\_, Notary Public  
My Commission expires \_\_\_\_\_, 19\_\_\_\_.

Know all men by these presents that The Fourth National Bank and Trust Co., a Corporation, by its \_\_\_\_\_ President, mortgagee of the land described in the Civil Engineer's Certificate does hereby consent to the plating of "REPLAT OF PART OF PINERIDGE ADDITION" to Wichita, Sedgwick County, Kansas.

THE FOURTH NATIONAL BANK AND TRUST CO.  
  
\_\_\_\_\_, President

ATTEST:  
  
\_\_\_\_\_, Secretary

STATE OF KANSAS )  
COUNTY OF SEDGWICK ) SS:

Be it remembered, that on this \_\_\_\_\_ day of \_\_\_\_\_, A.D., 19\_\_\_\_, before me the undersigned, a Notary Public in and for the County and State aforesaid, came \_\_\_\_\_ President of The Fourth National Bank and Trust Co., a Corporation, to me personally known to be the same person who executed the within instrument as \_\_\_\_\_ President of said corporation, and such person duly acknowledged the execution of the same as \_\_\_\_\_ President, for and on behalf of, and as the act and deed of said corporation.

In testimony whereof, I have hereunto set my hand and affixed my official seal the day and year above written.  
  
\_\_\_\_\_, Notary Public  
My Commission expires \_\_\_\_\_, 19\_\_\_\_.

This plat of "REPLAT OF PART OF PINERIDGE ADDITION" to Wichita, Sedgwick County Kansas, has been submitted to and considered by the Wichita-Sedgwick County Metropolitan Area Planning Commission, Wichita, Kansas, and is hereby transmitted to the Board of Commissioners of the City of Wichita, Kansas, with the recommendation that such plat be approved as proposed.

Dated this 16<sup>th</sup> day of July, 1964.

WICHITA-SEDGWICK COUNTY METROPOLITAN  
AREA PLANNING COMMISSION  
By E. Merritt Hanch, Chairman  
Robert A. Lubin, Secretary

Approved by the Board of City Commissioners this 11<sup>th</sup> day of August, 1964.

Virgil L. Boyd, Mayor  
Albert Swick, City Clerk

Approved by the Board of County Commissioners this 8<sup>th</sup> day of September, 1964.

W. O. Williams, County Clerk

Entered on transfer record this 8<sup>th</sup> day of September, 1964.

W. O. Williams, County Clerk

STATE OF KANSAS )  
COUNTY OF SEDGWICK ) SS:

This is to certify that this instrument was filed for record in the Register of Deeds Office on the 2<sup>nd</sup> day of September, 1964, at 12:30 o'clock, P.M., and is duly recorded.

Quincy E. D. ...  
Register of Deeds  
Paul Gilbert  
Deputy