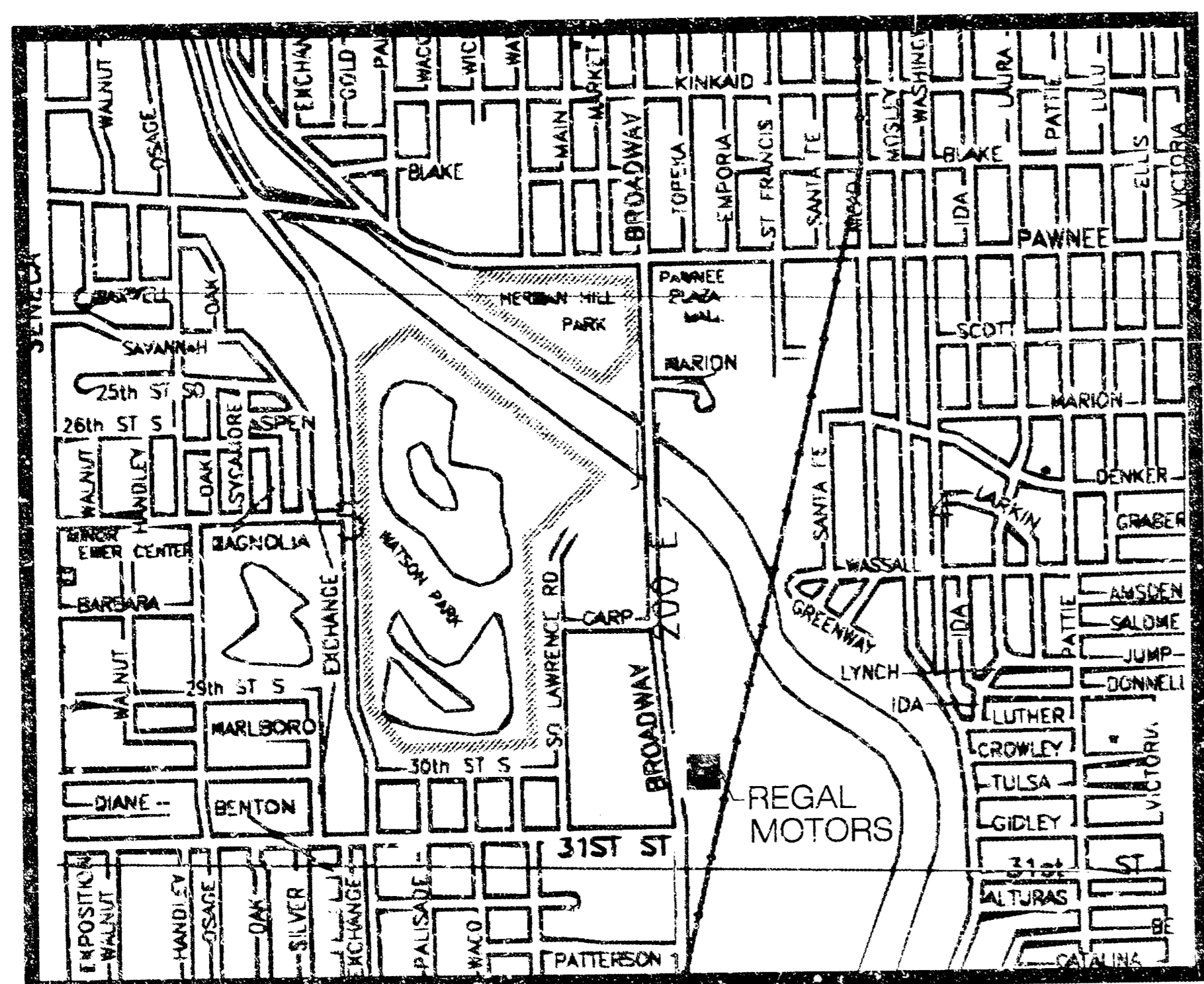
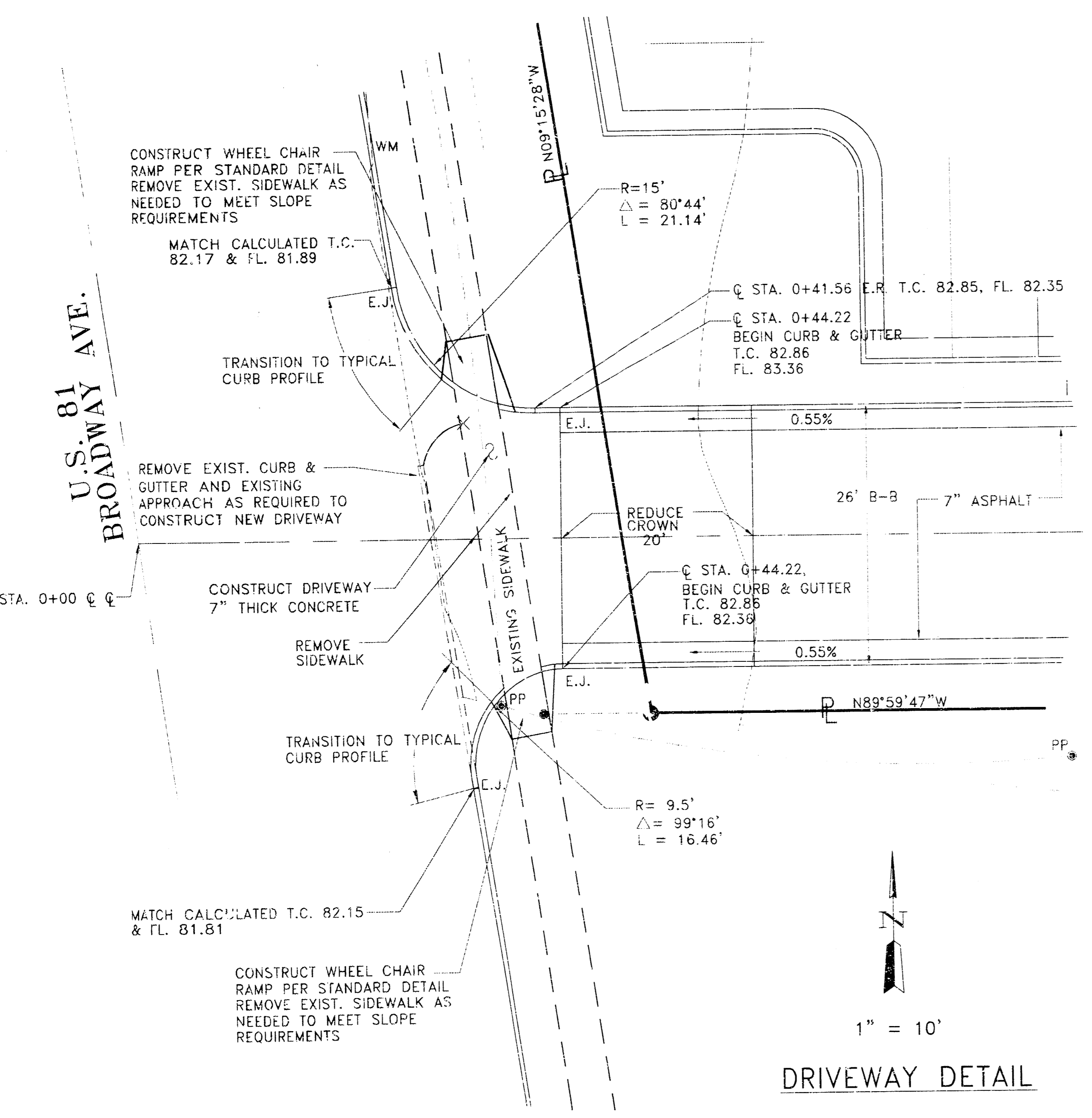
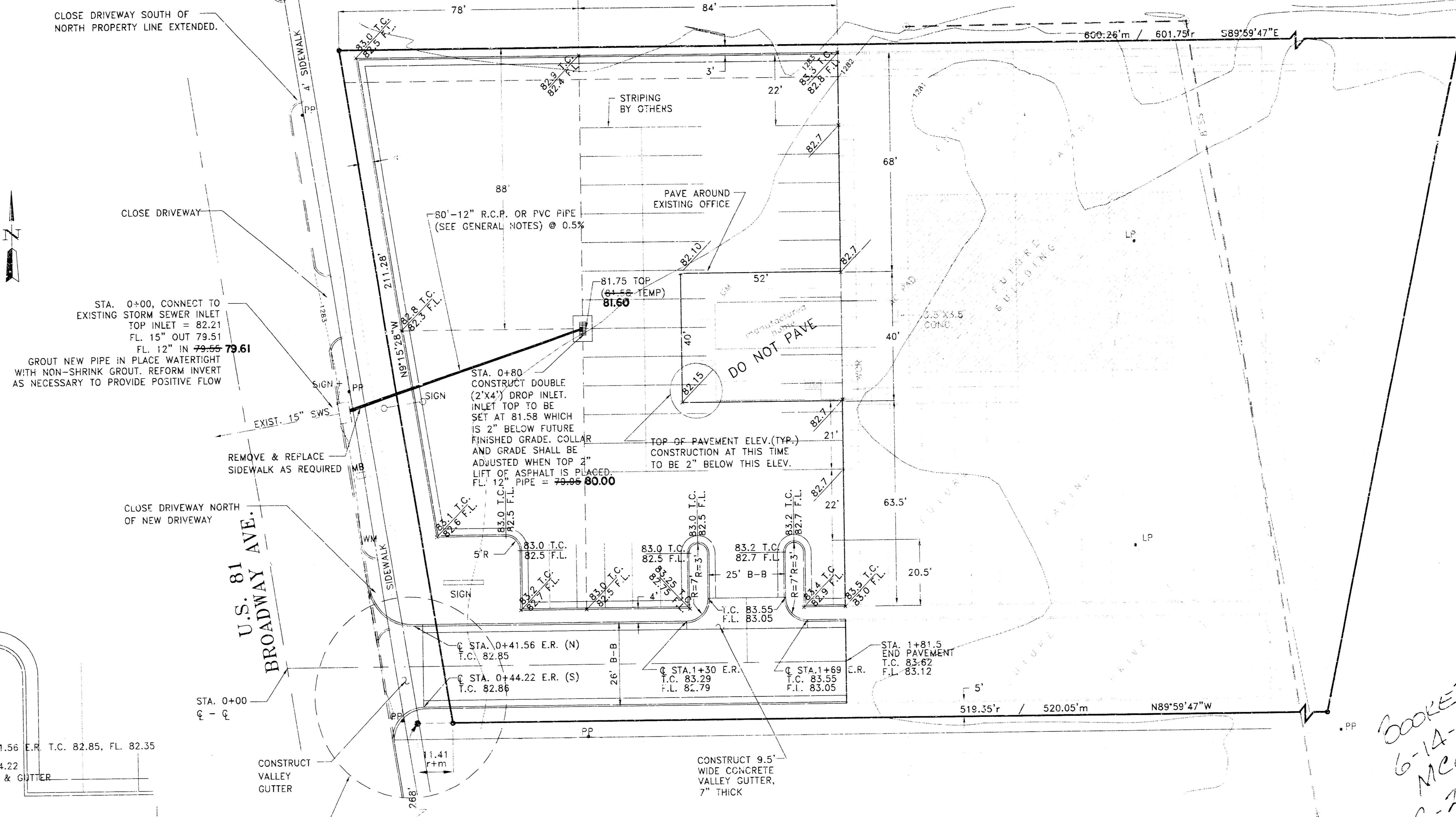


NOTE: All curb and gutter in the parking lot shall be constructed with reverse slopes. The driveway to the south shall be standard slope.



VICINITY MAP



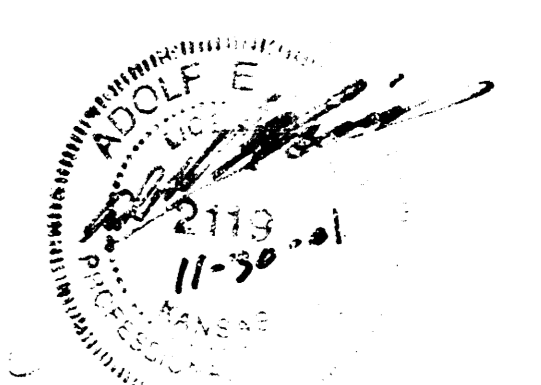
DRIVEWAY DETAIL

APPROVED AS NOTED BY THE CITY ENGINEER OF WICHITA

STORM WATER SEWER VRH 11/30/01  
 INSPECTION AND TESTING FOR THE STORM SEWER IS TO BE PROVIDED BY A LICENSED CONSULTING ENGINEERING FIRM UNDER CONTRACT WITH THE OWNER/DEVELOPER. SAID INSPECTION TO BE IN ACCORDANCE WITH THE CITY OF WICHITA STANDARD CONSTRUCTION ENGINEERING PRACTICES AND CERTIFIED BY A LICENSED PROFESSIONAL ENGINEER. NO WORK SHALL BE PERFORMED IN DEDICATED EASEMENTS OR PUBLIC RIGHT-OF-WAY BY THE CONTRACTOR WITHOUT SUCH INSPECTION NOR SHALL ANY WORK BE COMMENCED WITHOUT WRITTEN AUTHORIZATION BY THE CITY ENGINEER. ALL CONSTRUCTION AND MATERIALS SHALL COMPLY WITH THE CITY OF WICHITA SPECIFICATIONS AND STANDARDS (ON FILE AND AVAILABLE IN THE CITY ENGINEER'S OFFICE).

CONSTRUCTION PHASING NOTE  
 The south driveway, complete with 7" of pavement and adjoining valley gutter, shall be constructed first. Once completed the parking lot will be cleared for construction. The existing entrances shall be closed down only when the south entrance is functional. In this manner, the car lot can stay in business during both phases of construction.

BOOKED  
 6-14-02  
 MEG  
 C-21B



REISS & GOODNESS ENGINEERS  
 2160 WEST 21st STREET  
 WICHITA, KANSAS 67203  
 (316) 832-0213

AS CONSTRUCTED 12-19-01

STORM SEWER IMPROVEMENTS - 1185 PPS, INDEX CODE 607861

REVISION	DIRECTORY	DRAWN BY	FILE NAME	CHECKED BY	DESIGNED BY	PROJECT
	OLD_C/SURVEY	C.E.	REGALST.DWG		R.P.	REGAL MOTORS ADDITION - WICHITA, KANSAS

PAVING PLAN

CUSTOMER: REGAL MOTORS ADDITION - WICHITA, KANSAS

SCALE: NOTED  
 DATE: 10/29/2001  
 PROJECT NO. ST0501  
 SHEET 3 OF 7

18 14 17