

STORM SEWER IMPROVEMENTS

TO SERVE

SEDGWICK COUNTY COMMUNITY CORRECTIONS ST. FRANCIS AVE. & CENTRAL AVE.

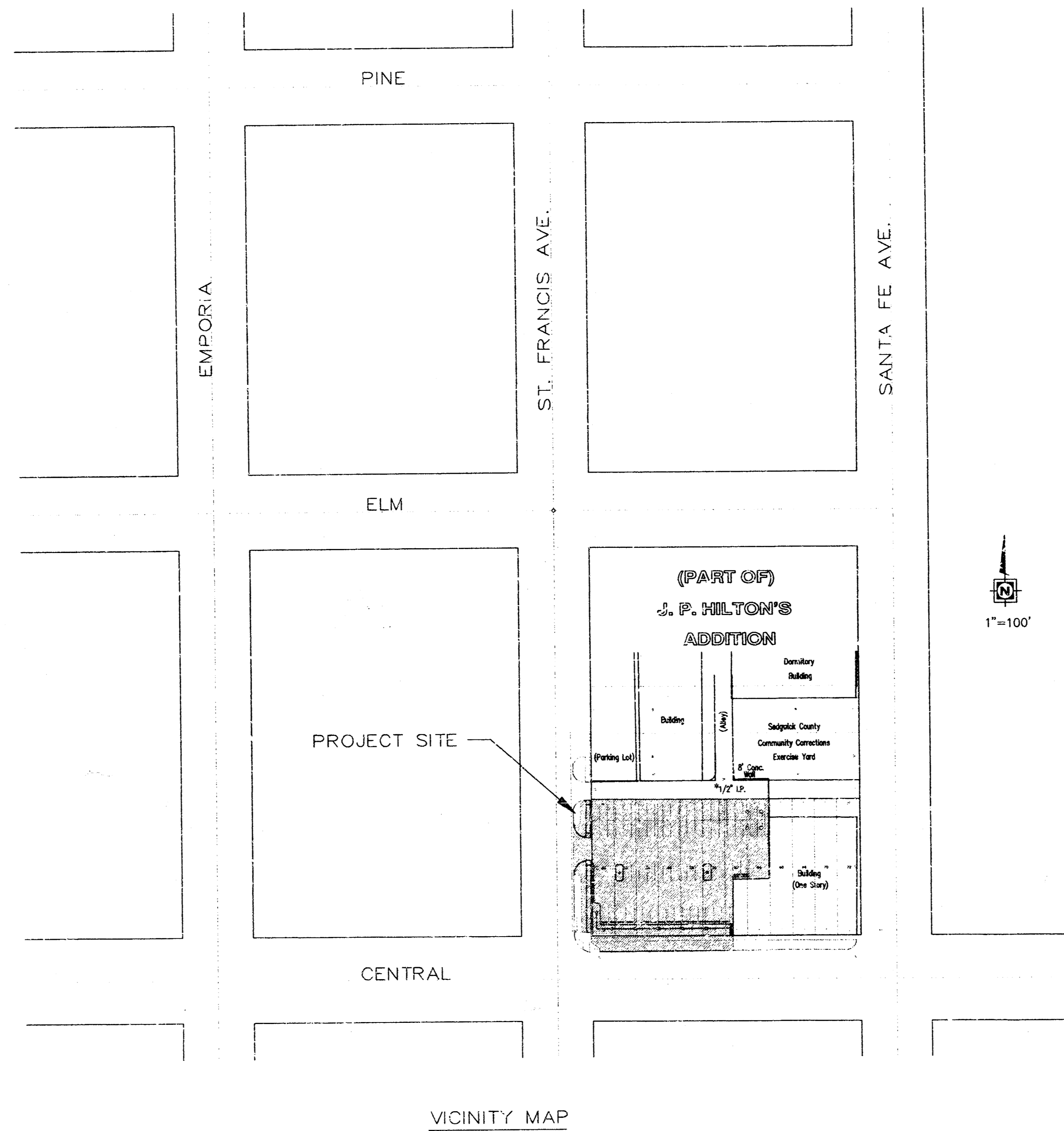
Private Project No. 1195 PPS (607861)

City of Wichita
Sedgwick County, Kansas
MICHAEL E. LINDEBAK, PE, CITY ENGINEER

GENERAL NOTES:

- ELEVATIONS SHOWN ARE CITY DATUM. (USGS ELEVATIONS = CITY DATUM + 1187.40)
- AT LEAST 72 HOURS PRIOR TO BEGINNING AN EXCAVATION (EXCLUDING WEEKENDS AND HOLIDAYS), THE CONTRACTOR SHALL CONTACT THE KANSAS ONE-CALL SYSTEM, A UTILITY LOCATION SERVICE, AT (316) 687-2470 TO REQUEST THE LOCAL UTILITY COMPANIES TO LOCATE ANY EXISTING LINES WITHIN THE PROJECT AREA.
- THE CONTRACTOR MUST NOTIFY THE FOLLOWING IN CASE OF AN EMERGENCY:

COX COMMUNICATIONS	(316) 262-0661
KANSAS GAS SERVICE	(316) 832-3122
KG&E	(316) 261-6512
PEOPLES NATURAL GAS	(316) 942-8811
SOUTHWESTERN BELL TELEPHONE COMPANY	(316) 268-2245
CITY OF WICHITA WATER AND SEWER DEPARTMENT	(316) 268-4555
CITY OF WICHITA CENTRAL INSPECTION	(316) 268-4341
- THE CONTRACTOR IS TO VERIFY UTILITY LOCATIONS PRIOR TO CONSTRUCTION OF THE PROJECT.
- STORM SEWERS, WATER LINES, AND SANITARY SEWERS SHALL BE CONSTRUCTED IN ACCORDANCE WITH THE "CITY OF WICHITA STANDARD SPECIFICATIONS FOR CITY CITY PROJECTS", THE DEPARTMENT OF PUBLIC WORKS, ENGINEERING DIVISION.
- EASEMENTS AND RIGHT-OF-WAY PROVIDED BY THE OWNER FOR THE PROJECT ARE SHOWN IN THE PLANS. THE CONTRACTOR SHALL BE RESPONSIBLE FOR THE ACQUISITION OF ANY ADDITIONAL TEMPORARY CONSTRUCTION EASEMENTS OR RIGHT-OF-WAY THAT HE DESIRES TO USE IN COMPLETING THE WORK.
- POSITIVE DRAINAGE SHALL BE PROVIDED FOR ALL AREAS ON OR NEAR SPOIL AREAS. NATURAL DRAINAGE WAYS SHALL BE MAINTAINED.
- THE CONTRACTOR WILL BE REQUIRED TO WORK AROUND EXISTING UTILITIES WITHIN THE RIGHT-OF-WAY WHICH DO NOT CONFLICT WITH THE PROPOSED CONSTRUCTION.
- THE CONTRACTOR SHALL RESTORE ALL DITCHES, SWALES, ROAD SHOULDERS, PAVEMENTS, ENTRANCES, AND BANK LINES TO THEIR ORIGINAL SLOPES AND GRADES.
- WHERE EXISTING ENTRANCE PIPE, DRAINAGE PIPE, HEADWALLS, SIGNS, MAILBOXES, FENCES, AND LANDSCAPING CONFLICT WITH THE PROPOSED WORK HEREIN THEY SHALL BE REMOVED AND RESET OR REPLACED AS REQUIRED. THE RESETTling OR REPLACEMENT OF ALL THE AFOREMENTIONED ITEMS SHALL BE CONSIDERED SUBSIDIARY TO SITE PREPARATION COSTS.
- EXISTING UTILITIES AND THEIR LOCATION, AS SHOWN ON THE PLANS, REPRESENT THE BEST AVAILABLE INFORMATION. IT SHOULD BE NOTED THAT OTHER BURIED LINES AND CABLE MAY EXIST WHICH ARE NOT SHOWN ON THESE PLANS. THE CONTRACTOR SHALL EXERCISE EXTREME CAUTION DURING TRENCHING OPERATIONS TO AVOID DAMAGING THESE LINES AND CABLES. ANY UTILITIES DAMAGED SHALL BE REPLACED OR REPAIRED IMMEDIATELY AS DIRECTED BY THE ENGINEER AT THE CONTRACTOR'S EXPENSE. THE CONTRACTOR SHALL PROTECT FROM DAMAGE AND SUPPORT EXISTING UTILITIES THROUGH CONSTRUCTION AS APPROVED BY THE UTILITY OWNER AND THE ENGINEER AT THE CONTRACTOR'S EXPENSE.
- THE CONTRACTOR SHALL VERIFY HORIZONTAL AND VERTICAL LOCATION, TYPE, SIZE, AND CLASS OF EXISTING STORM SEWERS PRIOR TO CONSTRUCTION. EXISTING STORM SEWER LOCATIONS AS SHOWN ON THE PLANS APPROXIMATE. THE CONTRACTOR SHALL MAKE ADJUSTMENTS AS REQUIRED AND APPROVED BY THE ENGINEER. PROVISIONS FOR AND INSTALLATION OF PIPE ADAPTERS, SHORT SECTIONS OF PIPE, AND COUPLERS SHALL BE SUBSIDIARY TO OTHER PAY ITEMS OF WORK.
- THE CONTRACTOR SHALL BE RESPONSIBLE FOR PRESERVING EXISTING PROPERTY IRONS AND RIGHT-OF-WAY MONUMENTS. THE CONTRACTOR SHALL BE REQUIRED TO REESTABLISH ANY PROPERTY IRONS OR RIGHT-OF-WAY MONUMENTS WHICH ARE DAMAGED OR DESTROYED BY HIS CONSTRUCTION OPERATIONS. SUCH IRONS OR MONUMENTS SHALL BE REESTABLISHED BY A LICENSED LAND SURVEYOR IN ACCORDANCE WITH STATE LAWS.
- THE CONTRACTOR SHALL NOT START WORK ON THE PROJECT UNTIL THE PROJECT INSPECTOR IS ASSIGNED TO THE PROJECT AND IS PRESENT ON THE SITE. ANY WORK PERFORMED WITHOUT INSPECTION IS SUBJECT TO BE UNCOVERED FOR INSPECTION.
- INTERURBAN TRAFFIC GENERATED OUTSIDE THE PROJECT AREA AND LOCAL BUSINESS OR RESIDENTIAL TRAFFIC GENERATED WITHIN THE PROJECT AREA ARE TO BE CARRIED THROUGH CONSTRUCTION AS REQUIRED BY THE CITY OF WICHITA TRAFFIC ENGINEERING DEPT. THE CONTRACTOR SHALL UTILIZE BARRICADES, SIGNS, GUARDS, AND FLAG MEN IN ACCORDANCE WITH THE MANUAL ON UNIFORM TRAFFIC CONTROL DEVICES.
- EACH BIDDER SHALL VISIT THE SITE OF THE PROJECT BEFORE SUBMITTING THE PROPOSAL FOR THIS WORK SO THAT HE WILL BE FULLY INFORMED OF THE EXISTING ABOVE GROUND AND SUBSURFACE FIELD CONDITIONS AND THE OBSTACLES WHICH MIGHT BE ENCOUNTERED. UPON AWARD OF THE CONTRACT THE CONTRACTOR SHALL NOT BE GRANTED ANY ADDITIONAL COMPENSATION WITH REGARDS TO TIME AND MONEY FOR CONDITIONS THAT MIGHT HAVE BEEN EVALUATED DURING INSPECTION OF THE SITE.
- ANY STREET CURBS OR OTHER EXISTING PAVING IMPROVEMENTS, DAMAGED BY THE CONTRACTOR SHALL BE REPLACED IN KIND TO THE NEAREST EXISTING CONSTRUCTION POINT OR TO LIMITS APPROVED BY THE CITY ENGINEER.
- ALL SAW CUTS SHALL BE FULL DEPTH. THIS WORK SHALL NOT BE PAID FOR DIRECTLY, BUT SHALL BE SUBSIDIARY TO SITE PREPARATION COSTS.
- THE CONTRACTOR SHALL SATISFY HIMSELF OF THE SUBSURFACE CONDITIONS PRIOR TO CONSTRUCTION.
- CUTS MADE TO PAVED SURFACES ON PUBLIC PROPERTY WILL BE REPAIRED BY THE CITY'S CONTRACTOR AND CHARGED AGAINST THE OWNER/APPLICANT. UNIT REPAIR PRICES ARE AVAILABLE FROM THE CITY AT 268-4418. A SURCHARGE MAY BE APPLICABLE. CALL 268-4418 FOR DETAILS. REPAIR COSTS TO BE PAID PRIOR TO RELEASE OF WATER SERVICE IF WATER SERVICE IS AFFECTED.



VICINITY MAP

FEBRUARY 2002

PLANS PREPARED BY:

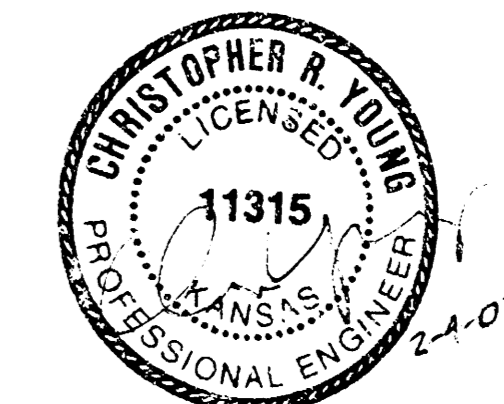
YOUNG & ASSOCIATES, P.A.
Civil and Environmental Engineers
100 South Georgie • Derby, Kansas • 67037

INDEX OF SHEETS:

TITLE SHEET	SD1.0
STORM SEWER PLAN & PROFILE	SD1.1
SHALLOW TYPE 'A' & 'B' MANHOLE DETAILS	SD1.2

HORIZONTAL COORDINATE CONTROL:

- SE CORNER OF LOT 3, J.P. HILTON'S ADDITION
1/2" I.P. FOUND
N. 5172.196
E. 4996.264
- NE CORNER OF LOT 11, J.P. HILTON'S ADDITION
1/2" I.P. FOUND
N. 5421.255
E. 4995.255

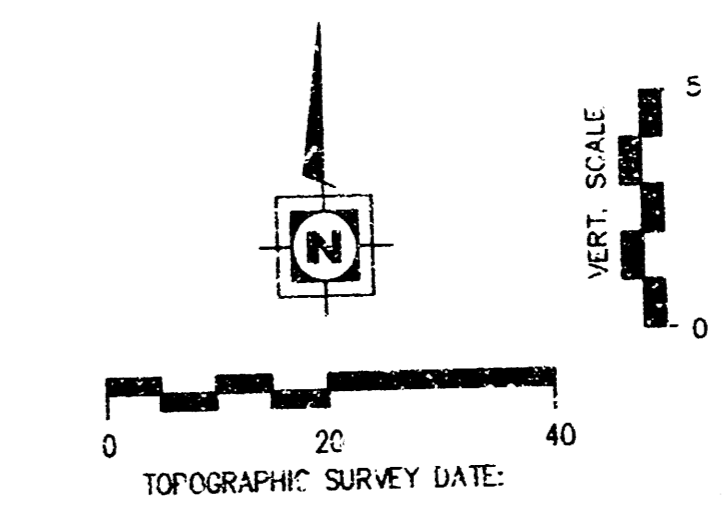
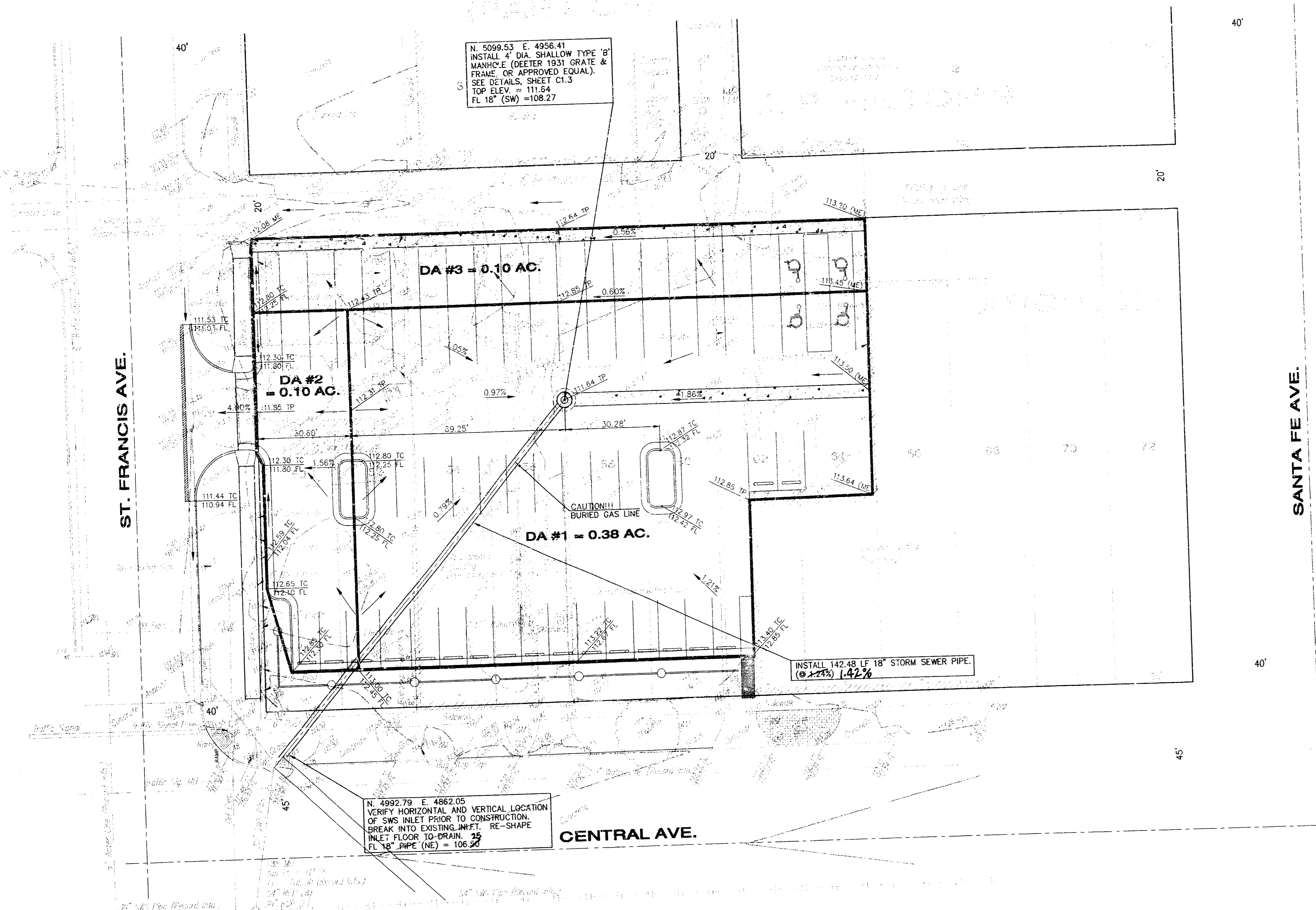


*BOOKED
D-33
MCS
2-22-02*

"AS BUILTS" E R1B 3/26/02

APPROVED AS NOTED BY CITY ENGINEERS OF WICHITA	
SANITARY SEWERS	_____
STORM SEWERS	<i>URH 2/15/02</i>
DRIVEWAY APPROACHES	_____
WATER MAINS	_____
PAVING	_____
NOTE TO CONTRACTORS	
INSPECTION AND TESTING FOR THIS PROJECT ARE TO BE PROVIDED BY A LICENSED CONSULTING ENGINEERING FIRM UNDER CONTRACT WITH THE OWNER/DEVELOPER. SAID INSPECTION TO BE IN ACCORDANCE WITH THE CITY OF WICHITA STANDARD CONSTRUCTION ENGINEERING PRACTICE AND CERTIFIED BY A LICENSED PROFESSIONAL ENGINEER. NO WORK SHALL BE PERFORMED IN DEDICATED EASEMENTS OR PUBLIC RIGHT-OF-WAY BY THE CONTRACTOR WITHOUT SUCH INSPECTION, NOR SHALL ANY WORK BE COMMENCED WITHOUT WRITTEN AUTHORIZATION BY THE CITY ENGINEER.	

CITY OF WICHITA PRIVATE PROJECT NO.:
1195 PPS (607861)



- LEGEND:**
- CL ROW
 - POWER POLE
 - STREET LIGHT POLE
 - WATER METER
 - WATER VALVE
 - STREET/TRAFFIC SIGN
 - MAN HOLE
 - GAS METER

SURVEY NOTES:

- EXISTING UTILITIES AND THEIR LOCATION, AS SHOWN ON THE PLANS, REPRESENT THE BEST AVAILABLE INFORMATION. IT SHOULD BE NOTED THAT OTHER BURIED LINES AND CABLE MAY EXIST WHICH ARE NOT SHOWN ON THESE PLANS. EXERCISE EXTREME CAUTION DURING TRENCHING OPERATIONS TO AVOID DAMAGING THESE LINES AND CABLES. CONTACT KANSAS ONE-CALL, A UTILITY LOCATION SERVICE, AT 1-800-344-7233 TO REQUEST THE LOCAL UTILITY COMPANIES TO LOCATE ANY EXISTING LINES WITHIN THE PROJECT AREA. ANY UTILITIES NOT SHOWN ARE DUE TO NO RESPONSE TO KANSAS ONE-CALL TICKET NUMBER 368200.

UTILITY OPERATING AUTHORITIES:

CITY OF WICHITA WATER & SEWER DEPARTMENT
316-268-4555
316-832-3125

KANSAS GAS SERVICE
316-261-6012

SOUTHWESTERN BELL TELEPHONE
316-268-2245

CDX COMMUNICATIONS
922-0661

HORIZONTAL COORDINATE CONTROL:

SE CORNER OF LOT 3, J.P. HILTON'S ADDITION
1/2" I.P. FOUND
N. 5172.196
E. 4998.264

NE CORNER OF LOT 11, J.P. HILTON'S ADDITION
1/2" I.P. FOUND
N. 5401.255
E. 4995.255

SITE BENCHMARK:

NORTH BOLT ON FIRE HYDRANT, LOCATED AT THE NW CORNER OF THE INTERSECTION OF CENTRAL AND ST. FRANCIS
ELEV. = 114.16 (CITY DATUM)



Wilson Darnell Mann P.A.
105 N. Washington Wichita, Kansas 67202
ph 316.262.4700 fx 316.252.3002
www.wdmdesign.com

Community Corrections
Parking Lot

CENTRAL & ST. FRANCIS
WICHITA, KANSAS

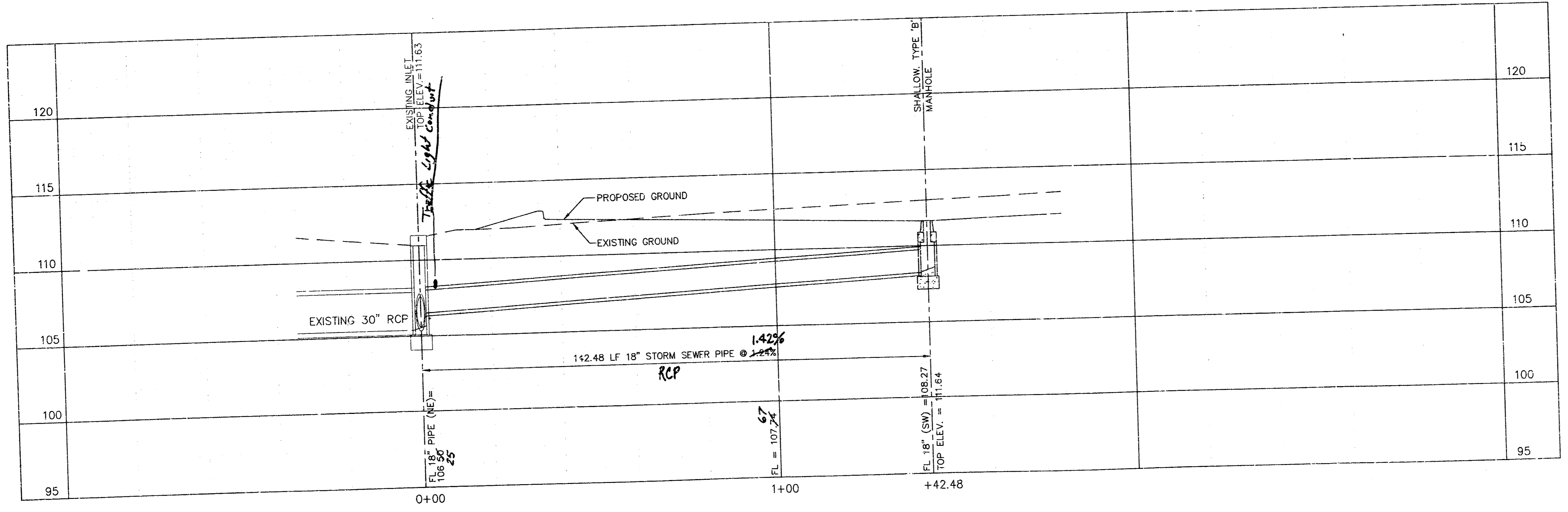
PRINTS ISSUED

WDM No. 00091
drawn: DAS
checked: DRY
3/26/12
Site Grading and Drainage
Plan

Site Drainage
And
Storm Sewer Plan

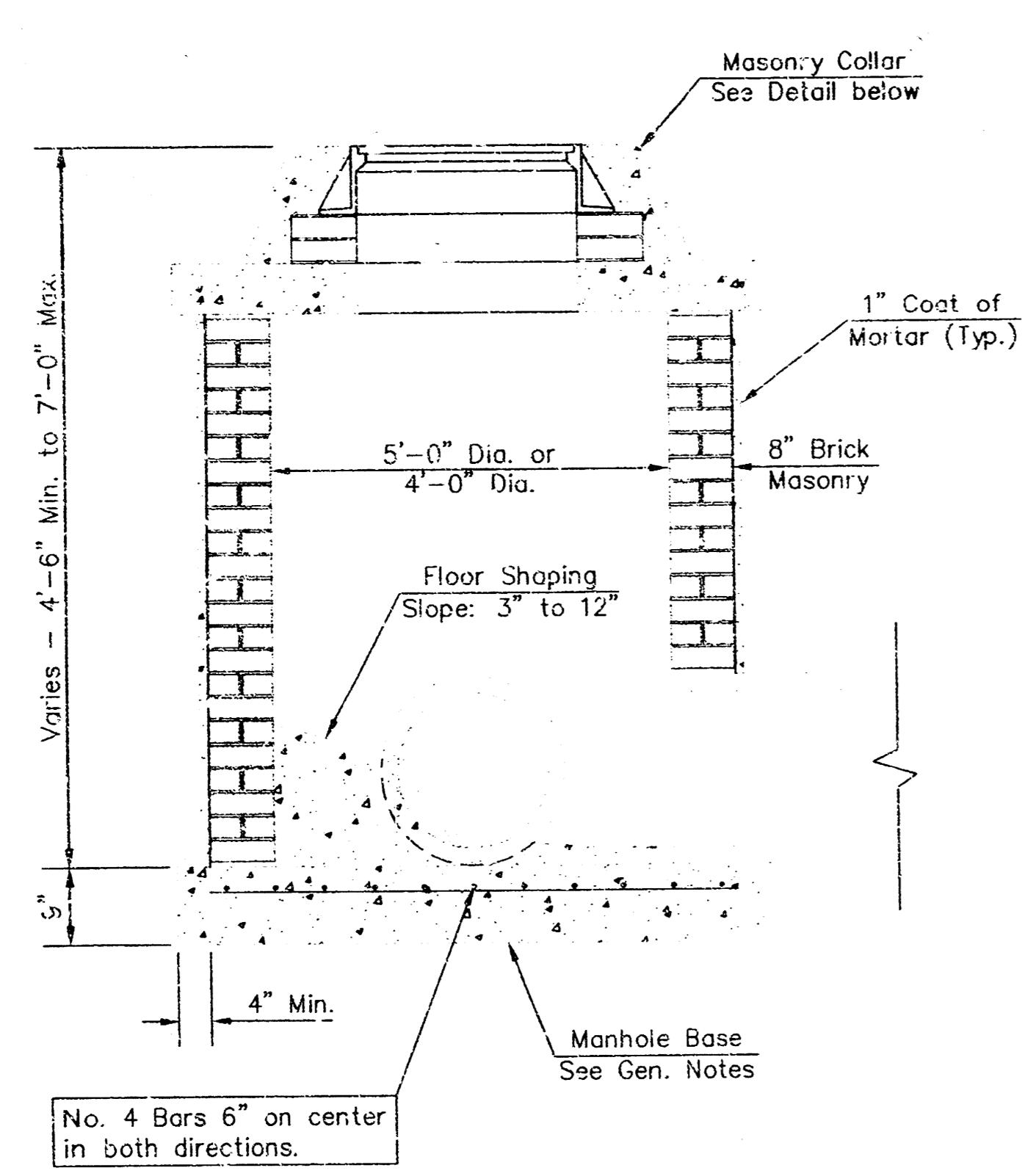
SD1.1

© copyright Wilson Darnell Mann P.A.

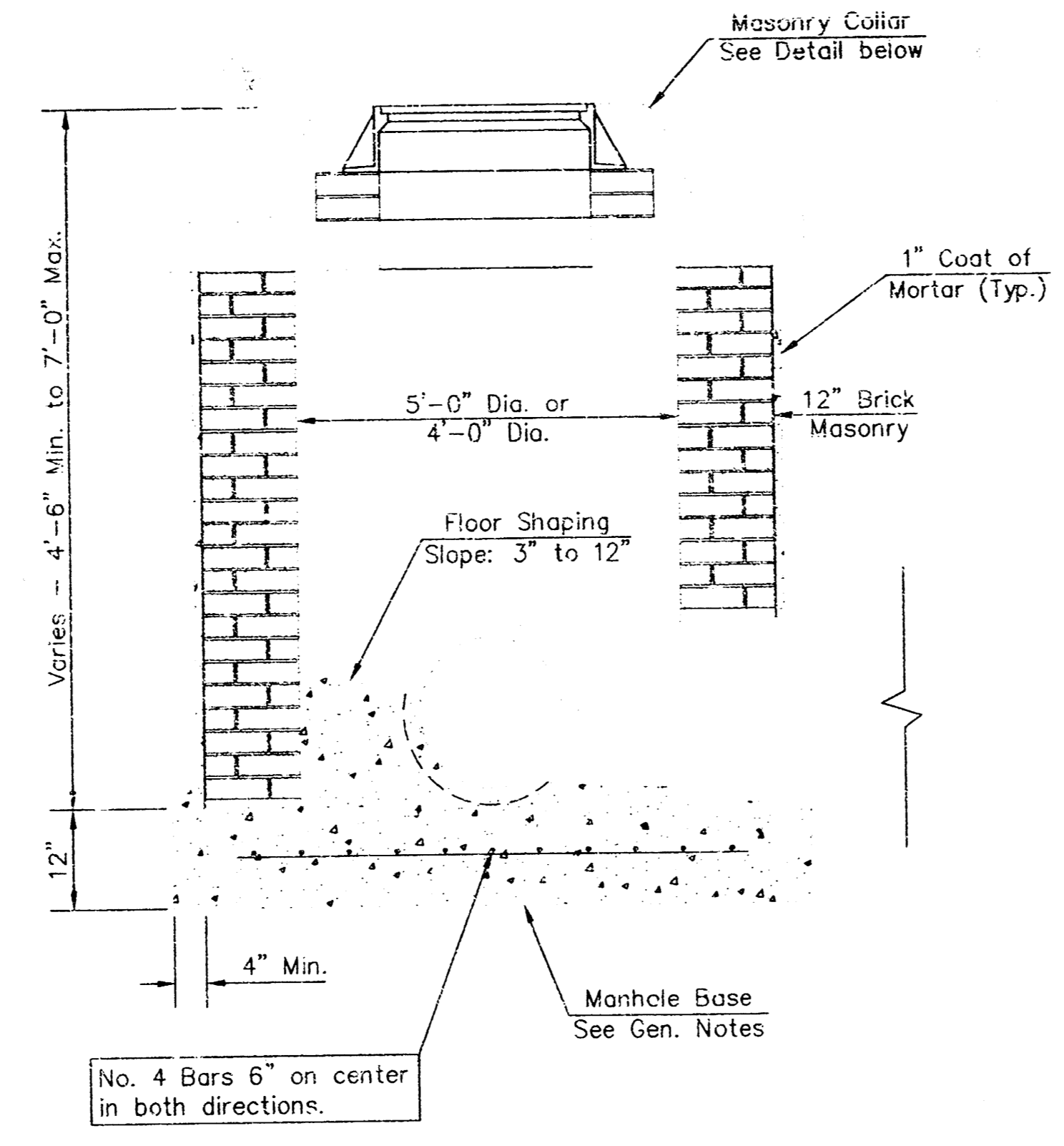


C:\acowork\129\Final\2380ramp\10.dwg P11 P10 01:15:56:49 2002

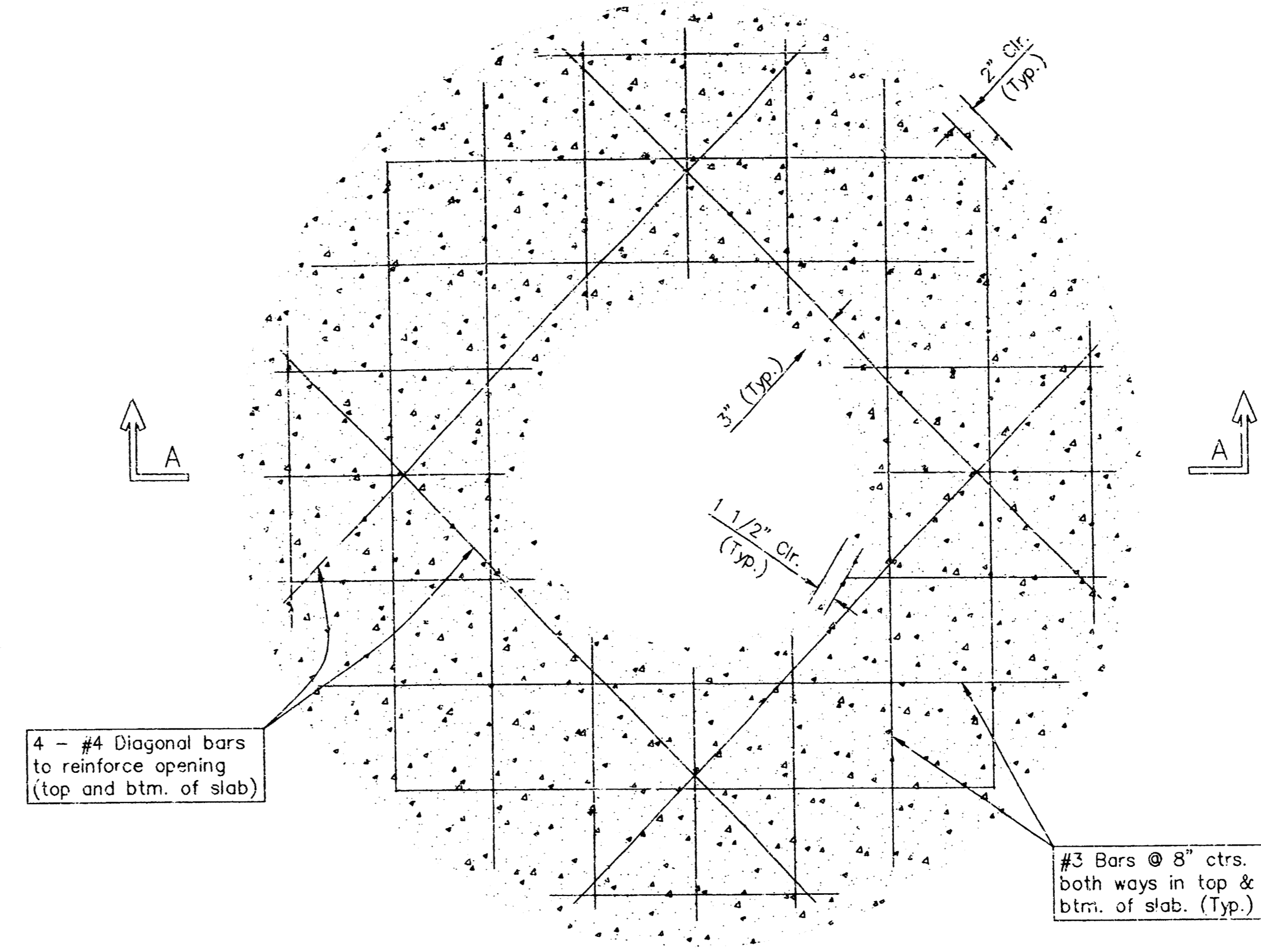
YOUNG & ASSOCIATES, P.A.
Civil and Environmental Engineers
102 S. George Ave., St. Louis, MO 63102



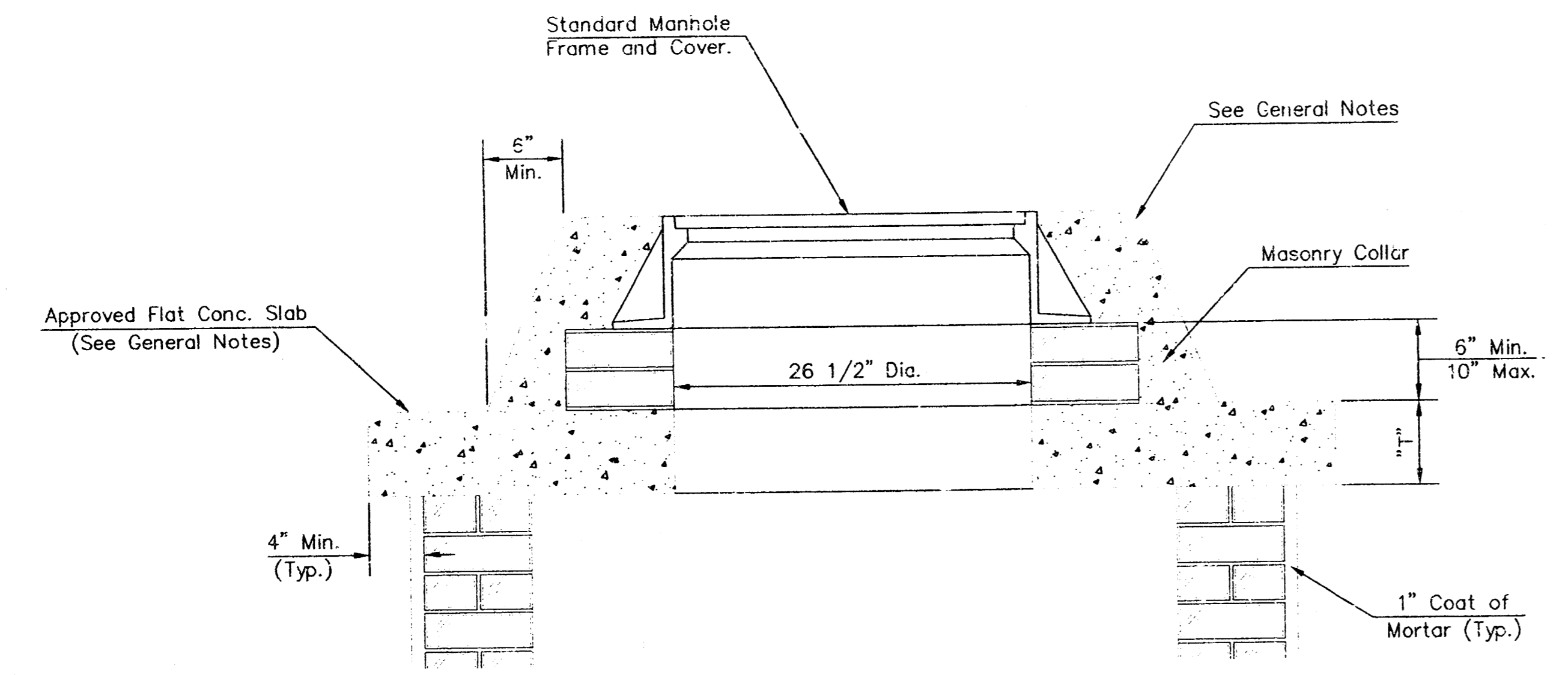
SHALLOW TYPE "A" MANHOLE



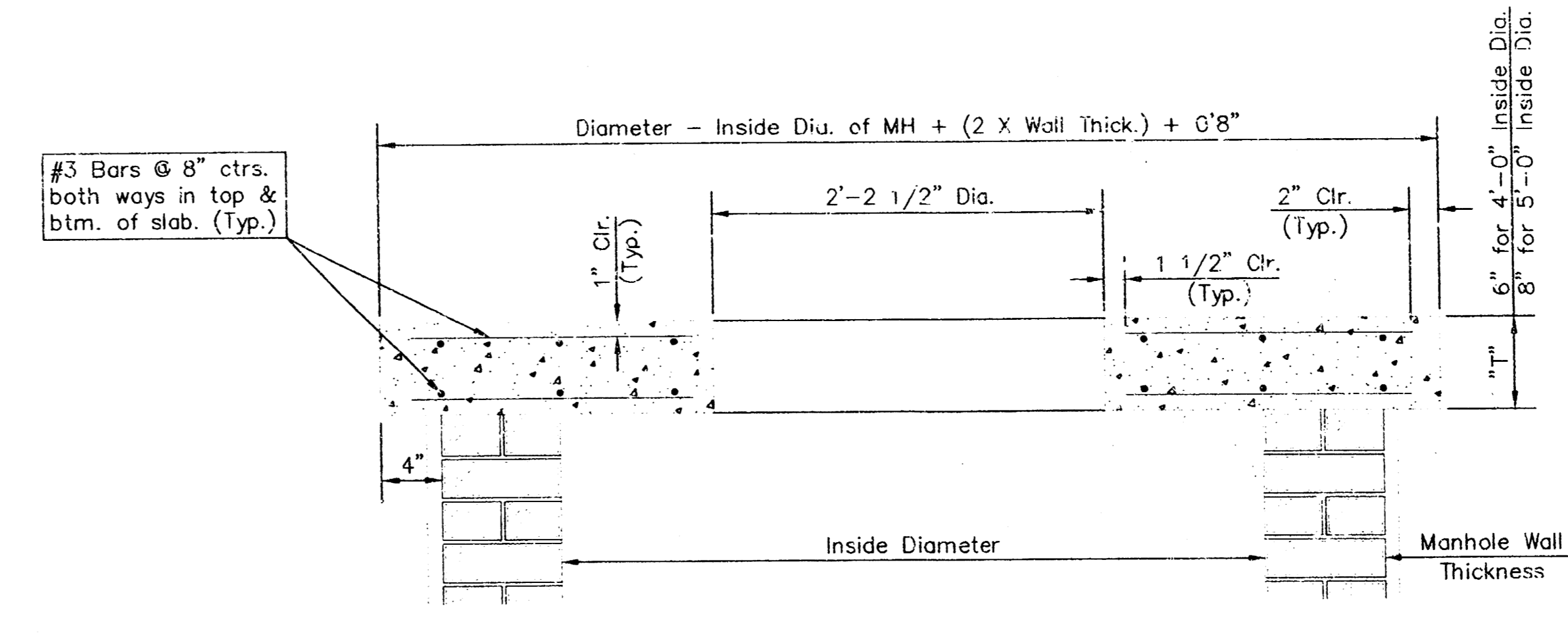
SHALLOW TYPE "B" MANHOLE



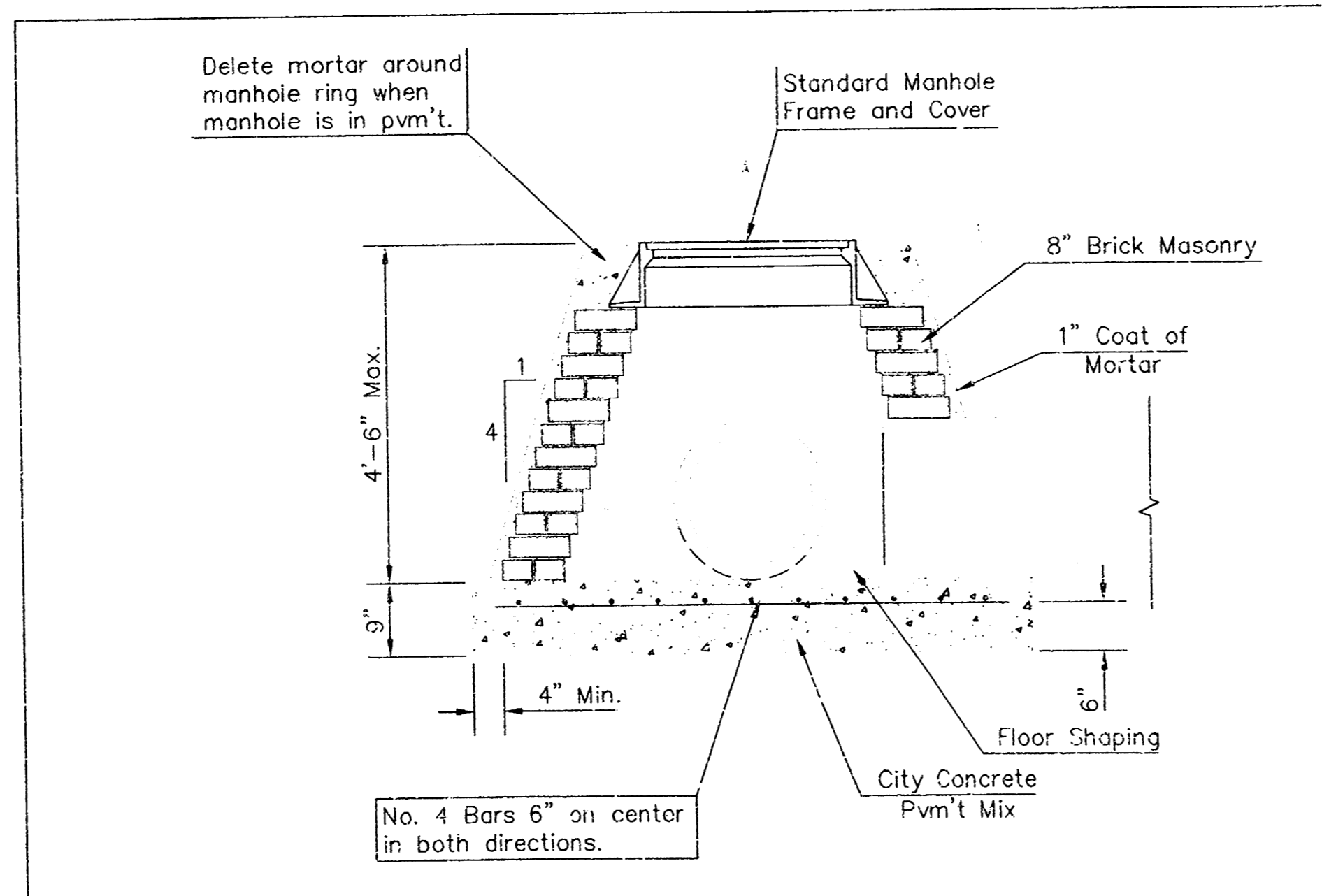
PLAN



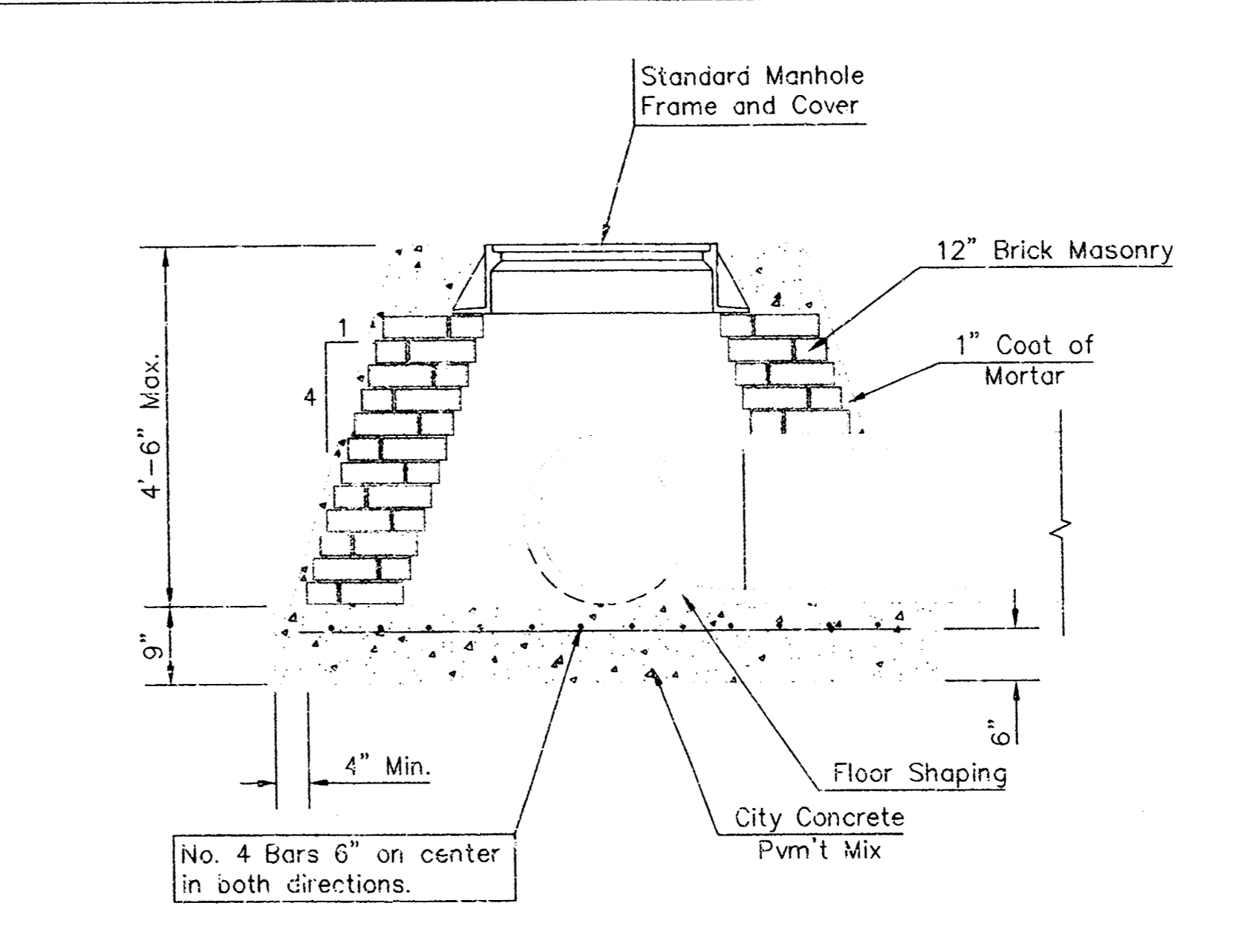
MASONRY COLLAR DETAIL



FLAT CONCRETE SLAB DETAILS



SPECIAL SHALLOW TYPE "A" MANHOLE



SPECIAL SHALLOW TYPE "B" MANHOLE

GENERAL NOTES

- Mortar used in masonry construction shall contain 8 sacks of cement per cubic yard. Concrete used in manhole bases shall conform to the requirements of concrete for concrete pavement construction as specified in the city standard paving specifications using city concrete cement mix without air entraining admixture. Mortar shall be placed around the manhole ring as shown on the drawings when manholes are constructed in unpaved areas. Type "A" shallow manholes can be used on sewers when the manhole is not located within public street pavement. Manholes constructed where pipe sizes are smaller than 24" shall have an inside diameter of 4". Manholes constructed where pipe sizes are 24" or larger shall have an inside diameter of 5". Completed manhole shall be without leaks and water tight.
- Reinforcing steel shall be installed in the manhole bases and shall consist of no. 4 bars placed on 6" centers in both directions. The manhole base reinforcement shall be placed 8" above the bottom of the manhole base. All costs for furnishing and installing reinforcing steel shall be included in the unit price bid for the manhole.
- The floors of all manholes shall be shaped with flow channels such that the manholes will be self cleaning and free of areas where solids could be deposited as sewage flows through the manhole from all inlet pipes to the outlet pipe. Flow channels shall be formed to match the bottom halves of the inflowing pipes and the outflowing pipe as shown by the drawings. Manhole floors shall have slopes of 3 inches per foot in the areas outside of the flow channels sloped toward the flow channels. Pipes laid through manholes shall have the top half removed to neat lines for the full inside diameter of the manhole. Manhole floors shall then be shaped around the bottom half of the pipe which forms the flow channel.
- Pipes installed within the excavation made for the manhole shall be cradled with concrete to the limits of the manhole excavation. When clay pipe is used, the cradle shall extend to the first joint outside the manhole. The cradle shall be terminated at the clay pipe joint in a manner which will maintain the flexibility of the joint. Cost of cradle within manhole excavation or to clay pipe joints adjacent to manhole shall be included in the unit price bid for the manhole.
- Manhole cover castings and manhole frame castings shall conform to the requirements as indicated in the standard specifications and as shown in the standard detail drawings.
- The crowns of inflowing pipes shall never be set lower than the crown of the outflowing pipe.
- Standard shallow manholes type "A" and "B" shall be paid for at the unit price bid per each for the type and diameter indicated. Standard special shallow manholes type "A" and "B" shall be paid for at the unit price bid per each for the type indicated. All standard shallow manhole diameters will be 4' unless indicated otherwise.
- All brick used in manhole construction shall meet Grade SW of ASTM C652 or C62-87.

<p>THE CITY OF WICHITA</p> <p>CITY ENGINEER'S OFFICE CITY HALL - SEVENTH FLOOR 425 NORTH MAIN STREET WICHITA, KANSAS 67202 (316) 268-2501 (316) 268-4114 FAX</p>	STANDARD/SPECIAL SHALLOW MANHOLES TYPE "A" & "B"	
	M. E. LINDEBAK P.E. - CITY ENGINEER	
	PROJECT NUMBER 1195 FPS (407861)	INDEX CODE YXXXXX
	DATE MAR 96	SHEET SD1.2

C:\acad\p1\262\DW\p1\262\DW\1125P.dwg (Fri Feb 01 15:46:22 2002)