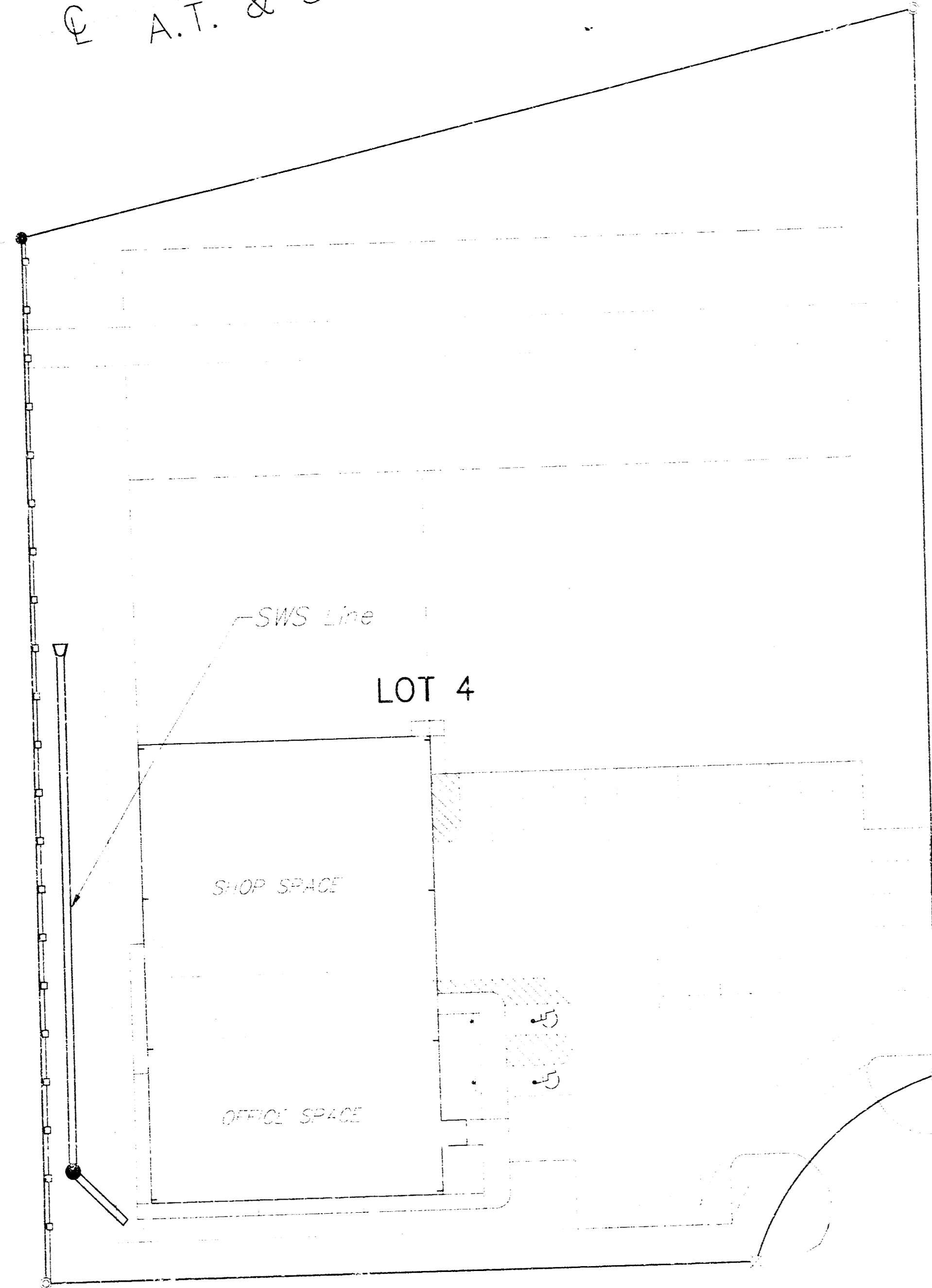


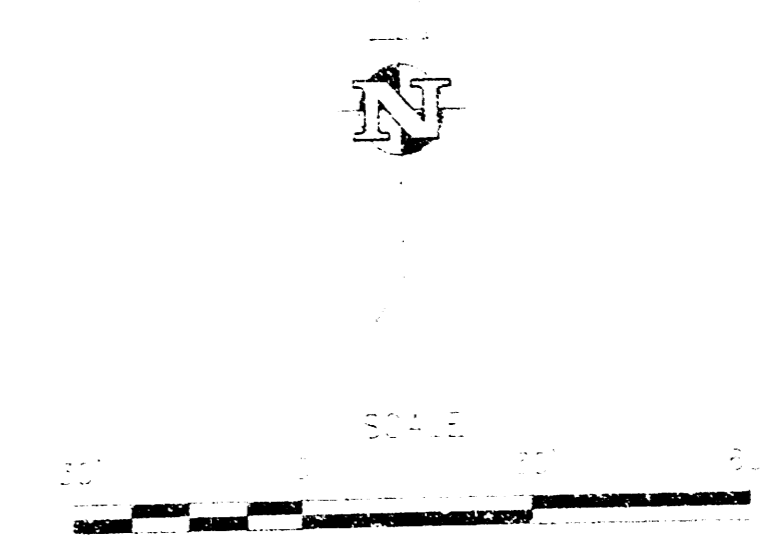
**STORM WATER SEWER IMPROVEMENTS TO SERVE  
LOT 4, J.W. RUSSELL 2ND ADDITION  
MILLINEUM CONCEPTS  
PROJECT NUMBER  
1199 PPS (607861)  
CITY OF WICHITA, KANSAS  
MICHAEL LINDEBAK, P.E., CITY ENGINEER**

A.T. & S.F. RAILROAD



MONROE CIRCLE

TYLER ROAD

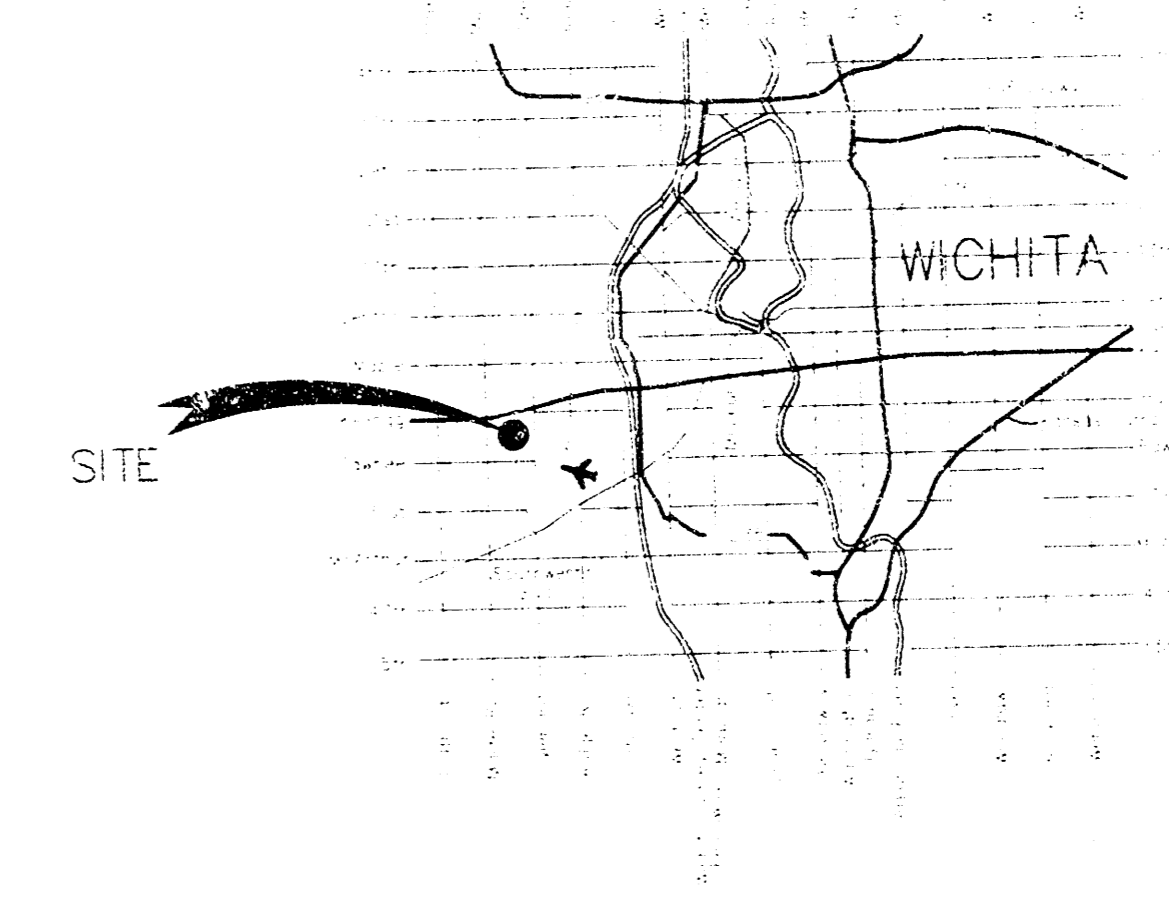


**INDEX**

- 1. SHEET 1-11
- 2. SHEET 1-12

**BENCHMARK**

117.00 on 100' x 100'  
Corner of Lot between  
Lots 4 & 5  
Elev. = 7.94'



**LOCATION MAP**

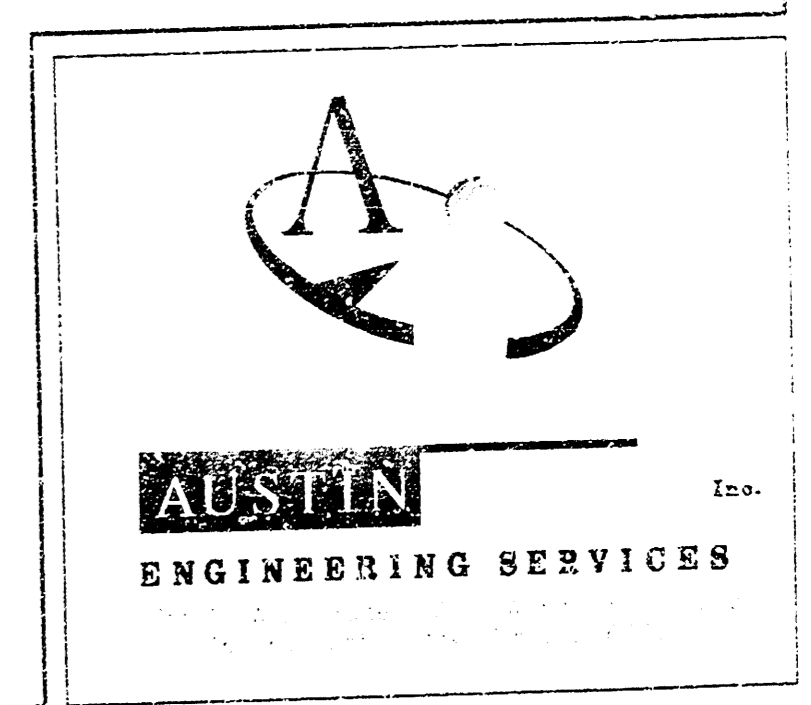
AS-BUILT  
Date: 4/15/02  
Signed: *[Signature]*

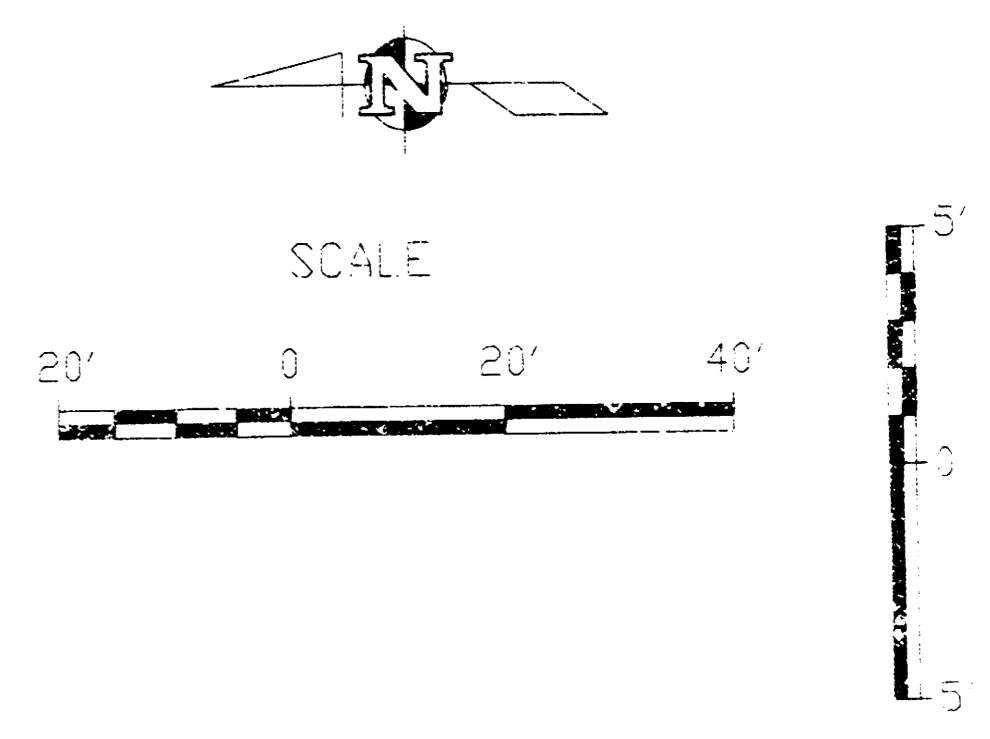
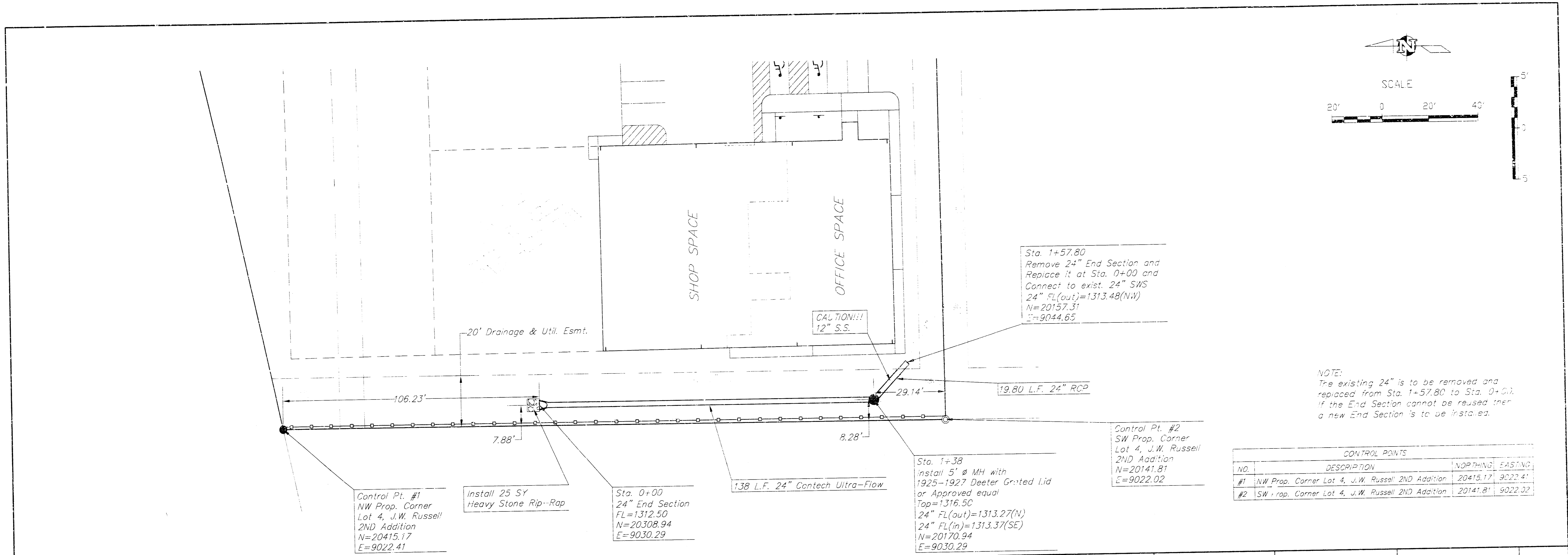
BOOKED  
5-30-02  
MCS  
D-416

APPROVED AS NOTED BY CITY ENGINEER OF WICHITA  
STORM SEWERS *VRH 2/5/02*

Installation and testing of this project are to be provided by a Licensed Consulting Engineering Firm under contract with the City of Wichita. All work shall be in accordance with the City of Wichita standards for professional engineering practices and verified by a Licensed Professional Engineer. All work shall be performed in accordance with the City Engineer's specifications for the installation and testing of storm sewers. All work shall be completed within the specified time and shall conform to the City Engineer's specifications and standards for the installation and testing of storm sewers.

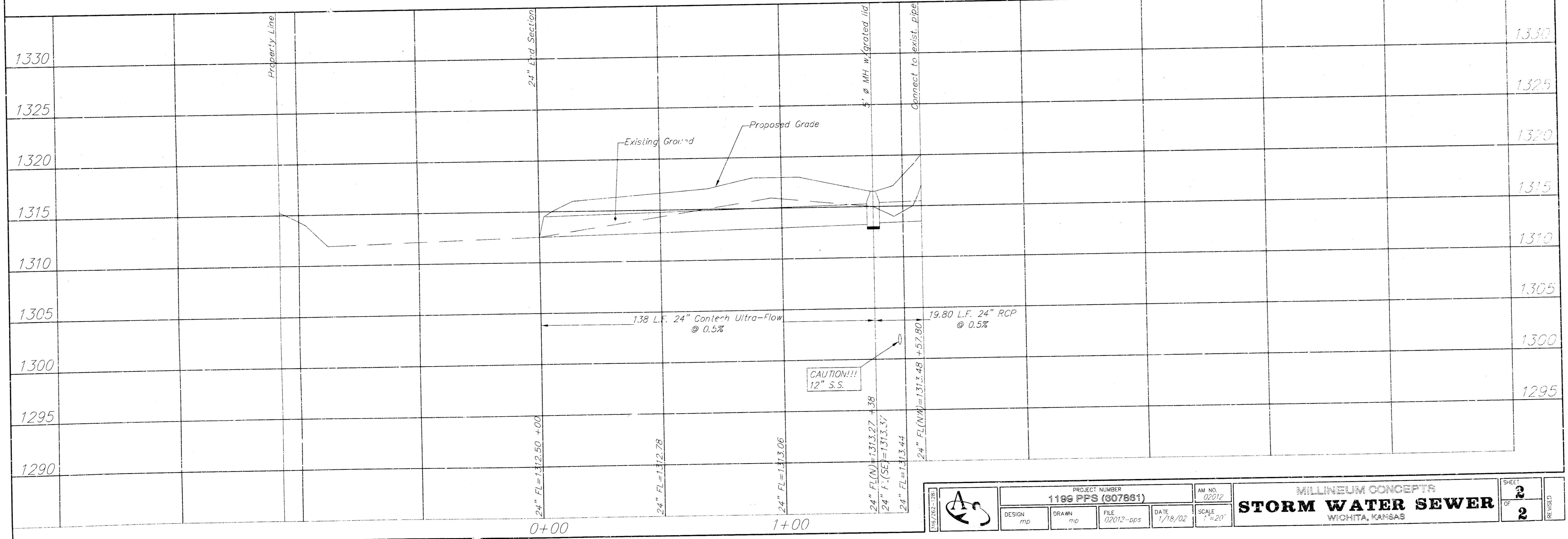
*[Signature]*  
1/2/02





NOTE:  
The existing 24\"/>

CONTROL POINTS			
NO.	DESCRIPTION	NORTHING	EASTING
#1	NW Prop. Corner Lot 4, J.W. Russell 2ND Addition	20415.17	9022.41
#2	SW Prop. Corner Lot 4, J.W. Russell 2ND Addition	20141.81	9022.02



	PROJECT NUMBER <b>1199 PPS (807851)</b>	AM NO. 02012	<b>MILLINEUM CONCEPTS</b> <b>STORM WATER SEWER</b> WICHITA, KANSAS	SHEET <b>2</b>
	DESIGN mp	DRAWN mo		FILE 02012-ops
SCALE 1"=20'			REVISED	OF <b>2</b>