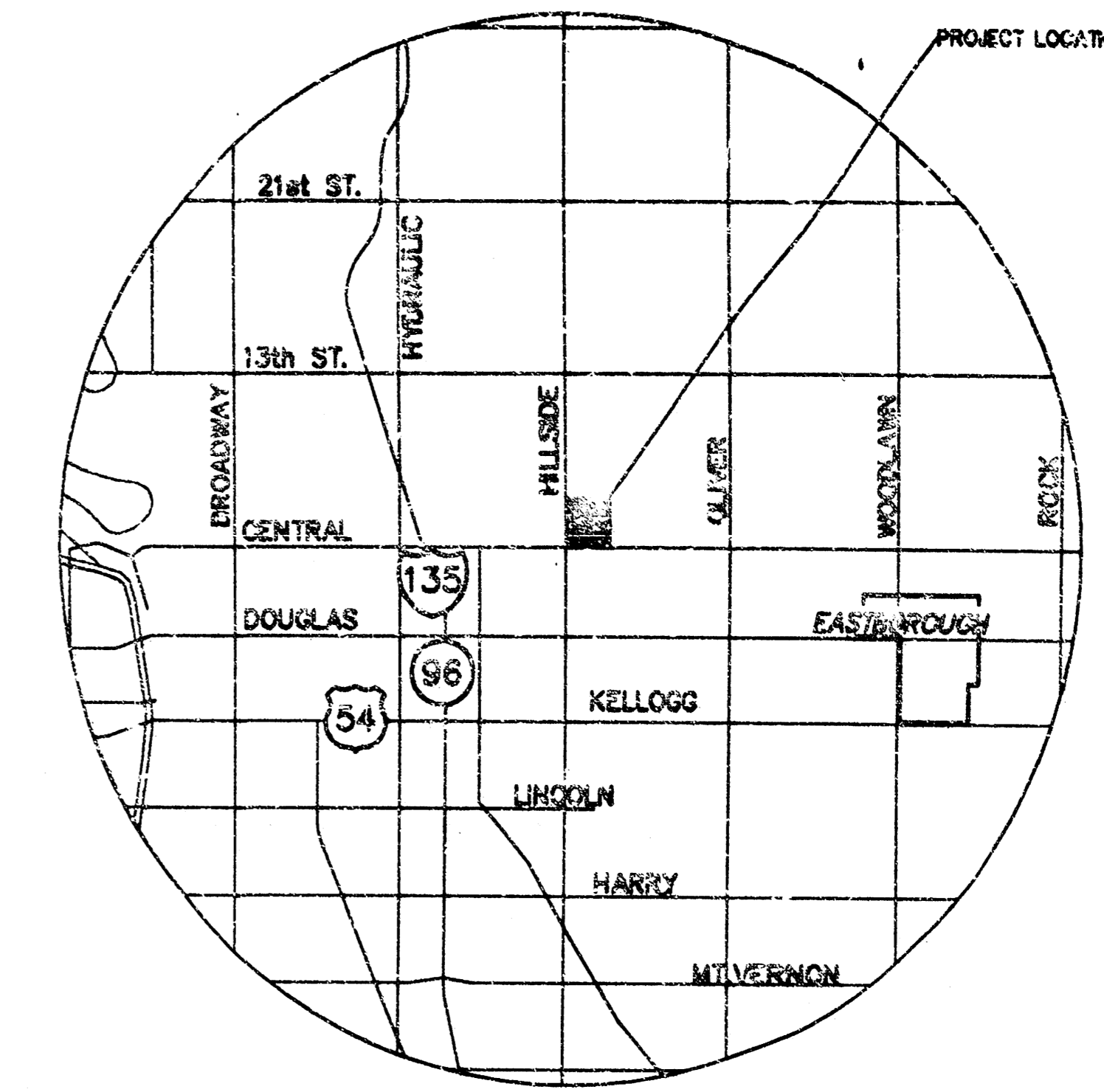


PRIVATE GRADING / DRAINAGE PLANS

WESLEY MEDICAL CENTER LDR ADDITION & RENOVATION

PRIVATE PROJECT #1229PPS(607861)

CITY OF WICHITA, KANSAS
MICHAEL E. LINDEBAK, CITY ENGINEER



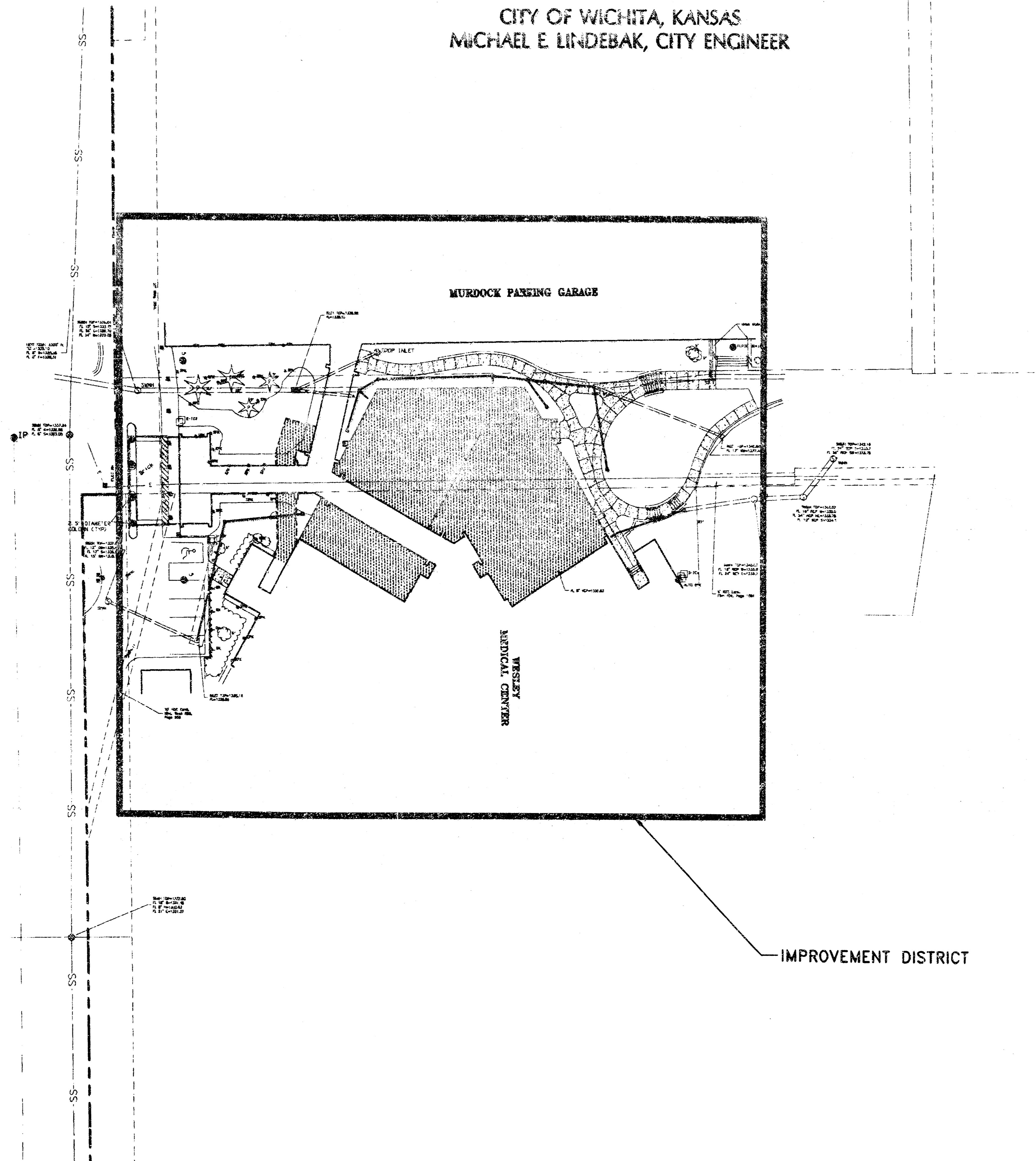
LOCATION MAP

INDEX TO DRAWINGS

SHEET NO.	DESCRIPTION
C1.0	COVER SHEET
C2.0	DETAILS & NOTES
C3.0	GRADING / DRAINAGE PLAN & PROFILE

BENCHMARKS

1. " " cut Northwest corner of traffic signal base Southeast corner Hillside & Murdock.
Elevation = 150.135'
2. " " cut on crosswalk signal base, Northeast corner of Hillside & Central.
Elevation = 144.093'
3. " " cut Northeast corner of light pole base at the Southeast corner of Hillside & Murdock.
Elevation = 145.32'
4. " " cut on the East end of concrete hand rail North side of Central ±154' West of Rutan.
Elevation = 145.506'
5. Disk in North end of RCBC
Elevation = 145.376'
6. " " on top of curb, North return Southeast corner Lot 3, Wesley Medical 3rd Addition.
Elevation = 154.551'



NOTE TO CONTRACTOR:

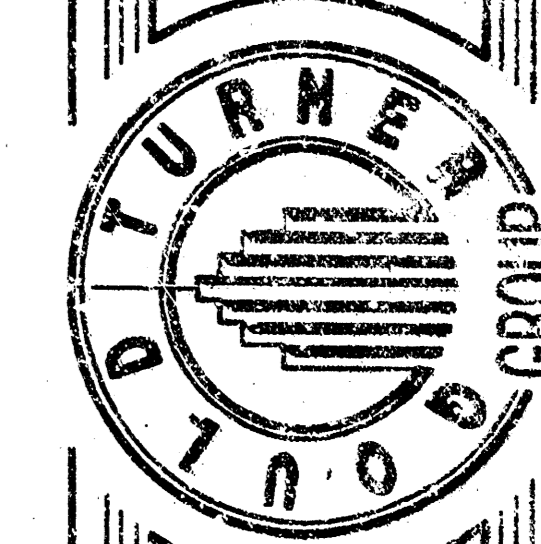
INSPECTION AND TESTING FOR THIS PROJECT IS TO BE PROVIDED BY A LICENSED CONSULTING ENGINEER FIRM UNDER CONTRACT WITH THE OWNER/DEVELOPER. SAID INSPECTION TO BE IN ACCORDANCE WITH THE CITY OF WICHITA STANDARD CONSTRUCTION ENGINEERING PRACTICES AND CERTIFIED BY A LICENSED PROFESSIONAL ENGINEER. NO WORK SHALL BE PERFORMED IN DEDICATED EASEMENTS OR THE PUBLIC RIGHT-OF-WAY BY THE CONTRACTOR WITHOUT SUCH INSPECTION NOR SHALL ANY WORK BE COMMENCED IN DEDICATED EASEMENTS OR PUBLIC RIGHT-OF-WAY WITHOUT WRITTEN AUTHORIZATION BY THE CITY ENGINEER.

APPROVED AS NOTED
CITY ENGINEER OF WICHITA

SANITARY SEWERS FR
 STORM SEWERS VRH 4/15/02
 DRIVEWAY APPROACHES _____
 WATER MAINS _____
 PAVING _____

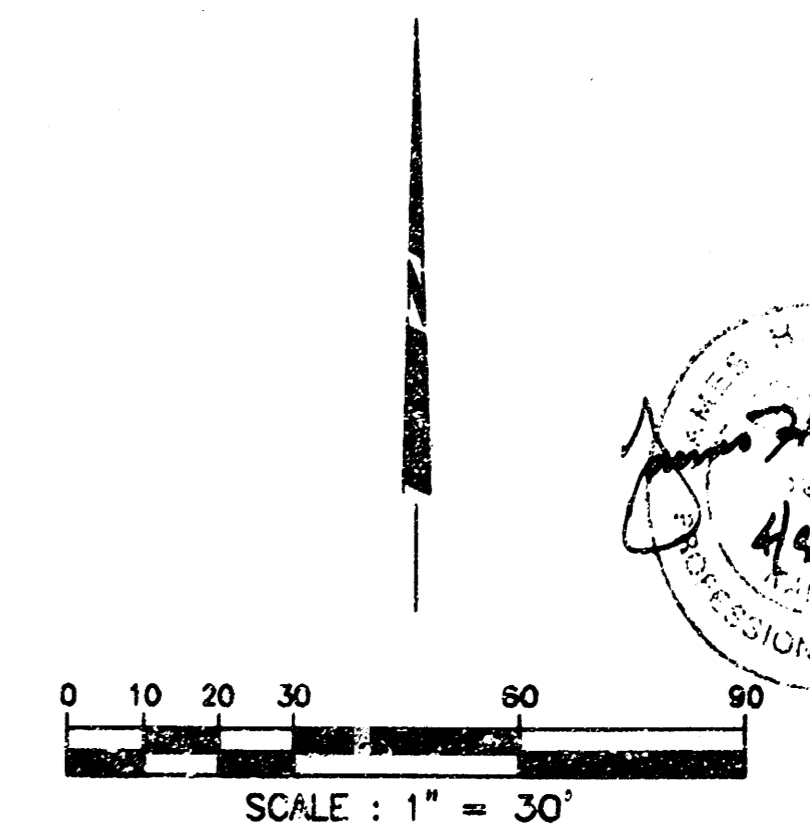
REVISIONS	DATE
	MARCH 14, 2003

GOULD TURNER GROUP, P.C.
 ARCHITECTS & PLANNERS
 4400 HARBING ROAD, SUITE 3000
 NASHVILLE, TENNESSEE 37203



WESLEY MEDICAL CENTER
 LDR ADDITION & RENOVATION
 WICHITA, KANSAS
OWNER PROJECT NUMBER 1549 2/03

Booked
 E-7
 12/18/03
 RDL
 AS BUILT
 MKEC
 12/03



LITTLEJOHN ENGINEERING
ENGINEER OF RECORD AND LAND PLANNING
 1805 Twenty-First Avenue South, Mulvane, Kansas 67222 Phone 913-386-4144

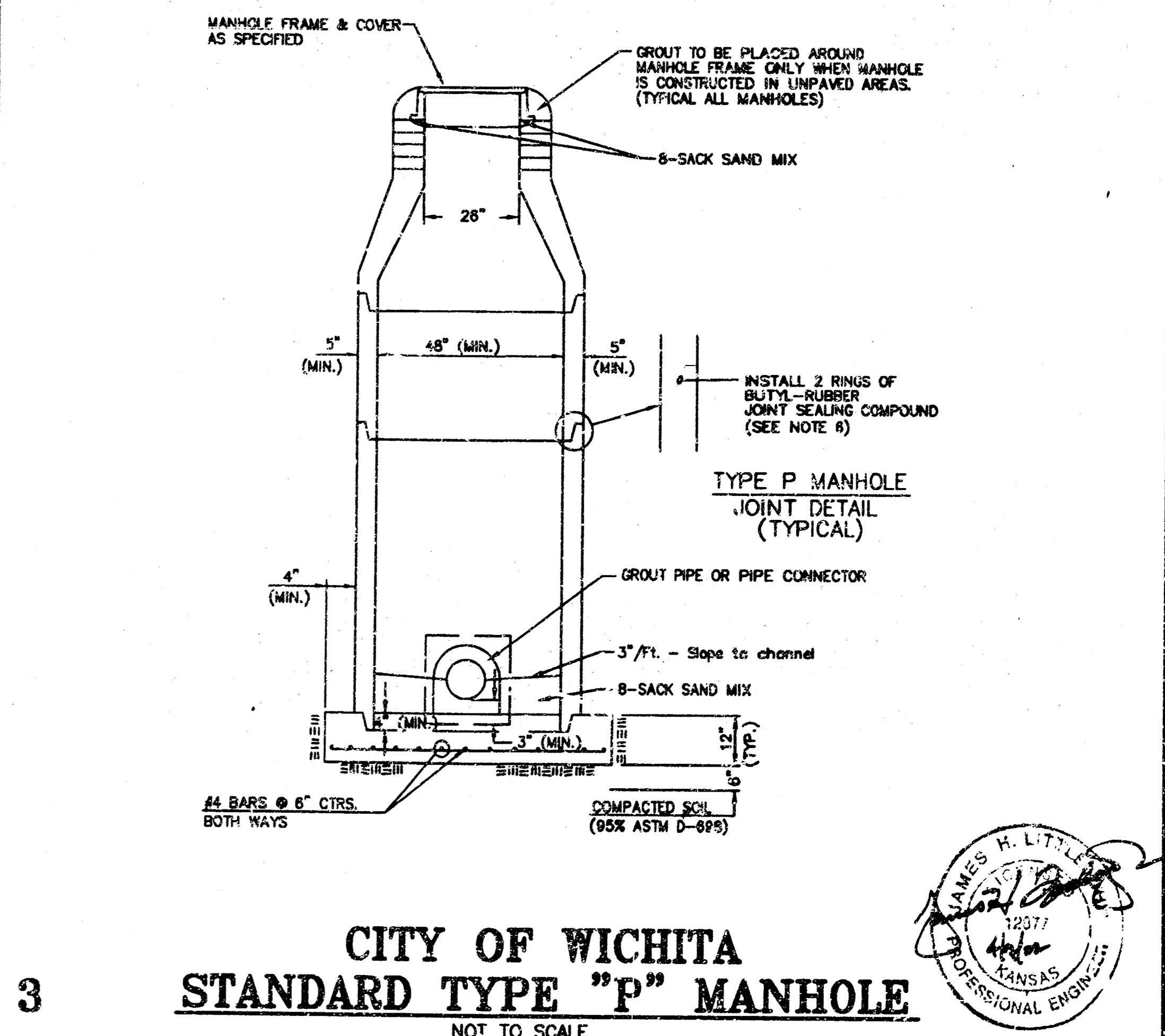
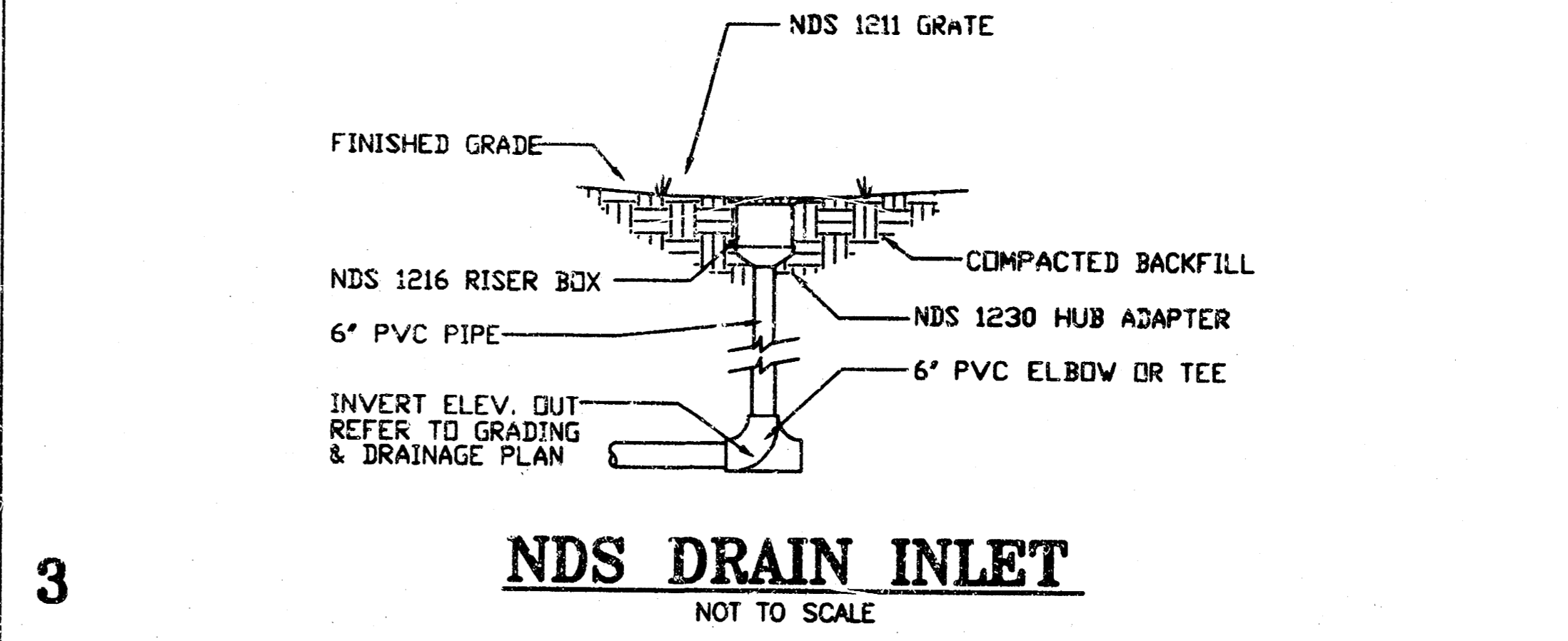
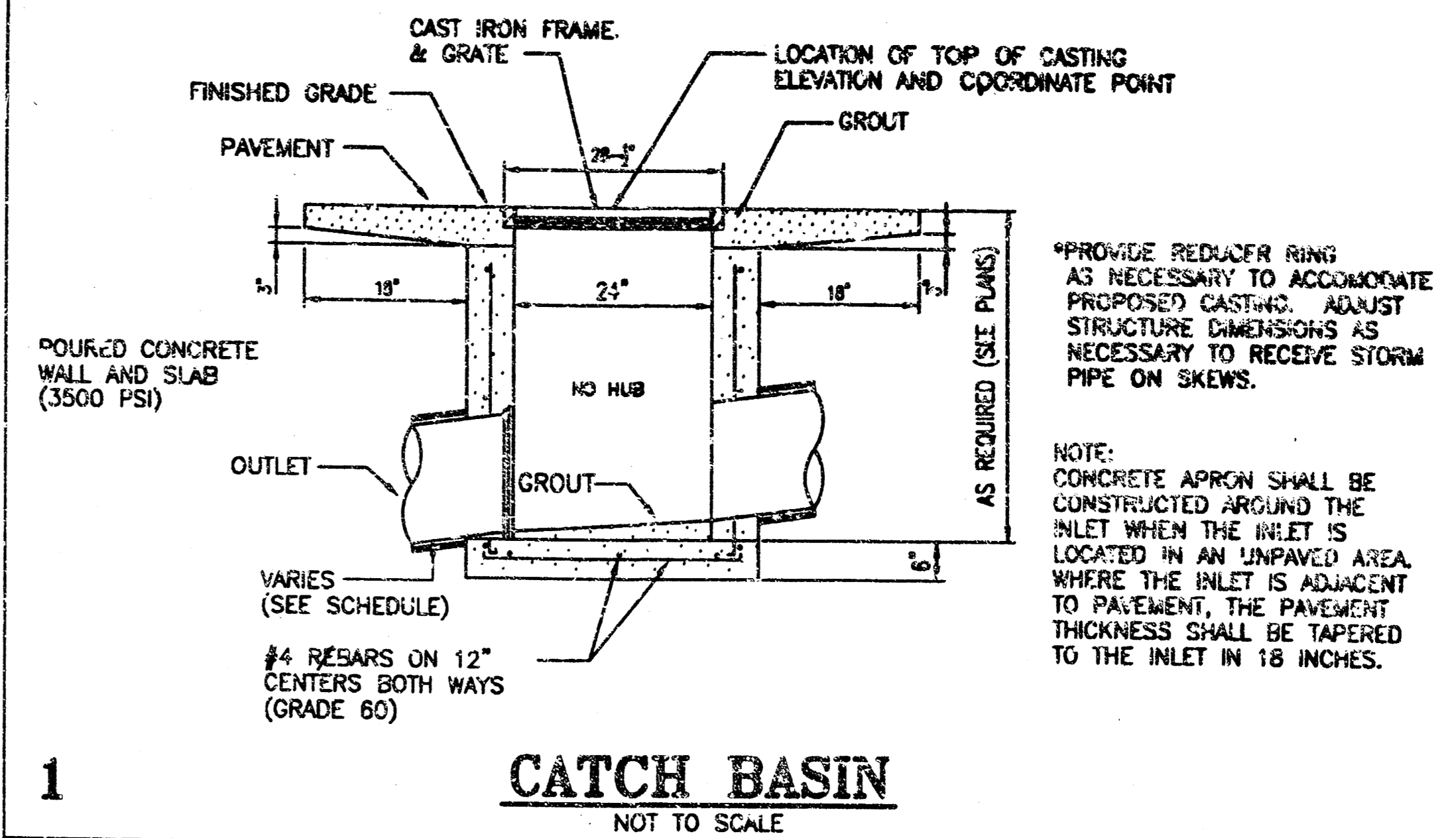
18 11 01 18

**COVER SHEET
C1.0**

SITE GRADING & EROSION CONTROL NOTES:

1. BASE INFORMATION WAS TAKEN FROM A SURVEY PREPARED BY MKEC ENGINEERING CONSULTANTS, DATED NOVEMBER 05, 2001. LITTLEJOHN ENGINEERING ASSOCIATES AND ANY OF THEIR CONSULTANTS SHALL NOT BE HELD RESPONSIBLE FOR THE ACCURACY AND/OR COMPLETENESS OF THAT INFORMATION SHOWN HEREON OR ANY ERRORS OR OMISSIONS RESULTING FROM SUCH.
2. THE SUBJECT PROPERTY DOES NOT LIE WITHIN A SPECIAL FLOOD HAZARD ZONE ACCORDING TO COMMUNITY PANEL NO. 200 328 0025 B OF THE F.E.M.A. FLOOD INSURANCE RATE MAPS FOR WICHITA, KANSAS, WITH AN DATE OF MAY 15, 1986.
3. CONSTRUCT SILT BARRIERS BEFORE BEGINNING GRADING OPERATIONS.
4. MULCH AND SEED ALL DISTURBED AREAS AS SOON AS POSSIBLE AFTER FINAL GRADING IS COMPLETED, UNLESS OTHERWISE INDICATED. CONTRACTOR SHALL TAKE WHATEVER MEANS NECESSARY TO ESTABLISH PERMANENT SOIL STABILIZATION.
5. REMOVE SEDIMENT FROM ALL DRAINAGE STRUCTURES BEFORE ACCEPTANCE BY LOCAL GOVERNING AGENCY, OR AS DIRECTED BY THE OWNER'S REPRESENTATIVE.
6. CLEAN SILT BARRIERS WHEN THEY ARE APPROXIMATELY 50% FILLED WITH SEDIMENT OR AS DIRECTED BY THE OWNER'S REPRESENTATIVE. SILT BARRIERS SHALL BE REPLACED AS EFFECTIVENESS IS SIGNIFICANTLY REDUCED, OR AS DIRECTED BY THE OWNER'S REPRESENTATIVE.
7. REMOVE THE TEMPORARY EROSION AND WATER POLLUTION CONTROL DEVICES ONLY AFTER A SOLID STAND OF GRASS HAS BEEN ESTABLISHED ON GRADED AREAS AND WHEN IN THE OPINION OF THE OWNER'S REPRESENTATIVE, THEY ARE NO LONGER NEEDED.
8. THE CONTRACTOR IS TO VERIFY THE EXACT LOCATION OF ALL EXISTING UTILITIES. TAKE CARE TO PROTECT UTILITIES THAT ARE TO REMAIN. REPAIR ANY DAMAGE ACCORDING TO LOCAL STANDARDS AND AT THE CONTRACTOR'S EXPENSE. COORDINATE ALL CONSTRUCTION WITH THE APPROPRIATE UTILITY COMPANY.
9. PROVIDE TEMPORARY CONSTRUCTION ACCESS(ES) AT THE POINT(S) WHERE CONSTRUCTION VEHICLES EXIT THE CONSTRUCTION AREA. MAINTAIN PUBLIC ROADWAYS FREE OF TRACKED MUD AND DIRT.
10. THE CONTRACTOR SHALL COORDINATE THE EXACT LOCATION OF THE STORM DRAIN CONNECTIONS AT THE BUILDING WITH THE PLUMBING PLANS.
11. THE CONTRACTOR SHALL CHECK ALL EXISTING GRADES AND DIMENSIONS IN THE FIELD PRIOR TO BEGINNING WORK AND REPORT ANY DISCREPANCIES TO THE ENGINEER.
12. THE CONTRACTOR SHALL COMPLY WITH ALL PERTINENT PROVISIONS OF THE MANUAL OF ACCIDENT PREVENTION AND CONSTRUCTION ISSUED BY AGC OF AMERICA, INC. AND THE SAFETY AND HEALTH REGULATIONS OF CONSTRUCTION ISSUED BY THE U.S. DEPARTMENT OF LABOR.
13. PROPOSED CONTOUR LINES AND SPOT ELEVATIONS ARE THE RESULT OF AN ENGINEERED GRADING DESIGN AND REFLECT A PLANNED INTENT WITH REGARD TO DRAINAGE AND MOVEMENT OF MATERIALS. SHOULD THE CONTRACTOR HAVE ANY QUESTION OF THE INTENT OR ANY PROBLEM WITH THE CONTINUITY OF GRADES, THE ENGINEER SHALL BE CONTACTED IMMEDIATELY.
14. ALL CUT AND FILL SLOPES SHALL BE 3 HORIZONTAL TO 1 VERTICAL OR FLATTER UNLESS OTHERWISE INDICATED ON THE PLANS.
15. ALL PIPES UNDER EXISTING PAVED AREAS SHALL BE BACKFILLED TO THE TOP OF SUBGRADE WITH CRUSHED STONE.
16. MINIMUM GRADE ON ASPHALT OR CONCRETE PAVING SHALL BE 1.0%.
17. CONTRACTOR SHALL CONFORM TO ALL APPLICABLE CODES AND OBTAIN APPROVAL AS NECESSARY BEFORE BEGINNING CONSTRUCTION.
18. ALL EARTHWORK, INCLUDING THE EXCAVATED SUBGRADE AND EACH LAYER OF FILL SHALL BE MONITORED AND APPROVED BY A QUALIFIED GEOTECHNICAL ENGINEER, OR HIS REPRESENTATIVE.
19. IF ANY SPRINGS OR UNDERGROUND STREAMS ARE EXPOSED DURING CONSTRUCTION, PERMANENT FRENCH DRAINS MAY BE REQUIRED. THE DRAINS SHALL BE SPECIFIED AND LOCATED DURING CONSTRUCTION AS REQUIRED BY THE CONDITIONS WHICH ARE ENCOUNTERED, AND SHALL BE APPROVED BY THE ENGINEER.
20. THIS GRADING & DRAINAGE PLAN IS NOT A DETERMINATION OR GUARANTEE OF THE SUITABILITY OF THE SUBSURFACE CONDITIONS FOR THE WORK INDICATED. A GEOTECHNICAL SOILS REPORT HAS BEEN PREPARED AND IS AVAILABLE FROM THE OWNER. DETERMINATION OF THE SUBSURFACE CONDITION FOR THE WORK INDICATED IS SOLELY THE RESPONSIBILITY OF THE CONTRACTOR.

21. THE CONTRACTOR SHALL TAKE SPECIAL CARE TO COMPACT FILL SUFFICIENTLY AROUND AND OVER ALL PIPES, STRUCTURES, VALVE STEMS, ETC., INSIDE THE PROPOSED PAVED AREAS TO AVOID SETTLEMENT. ANY SETTLEMENT DURING THE WARRANTY PERIOD SHALL BE RESTORED BY THE CONTRACTOR AT NO ADDITIONAL COST TO THE OWNER.
22. IN NO CASE SHALL SLOPE, HEIGHT, SLOPE INCLINATION, OR EXCAVATION DEPTH, INCLUDING TRENCH CONSTRUCTION, EXCEED THOSE SPECIFIED IN LOCAL, STATE AND FEDERAL REGULATIONS, SPECIFICALLY THE CURRENT OSHA HEALTH AND SAFETY STANDARDS FOR EXCAVATIONS (29 CFR PART 1926) SHALL BE FOLLOWED.
23. DO NOT DISTURB VEGETATION OR REMOVE TREES EXCEPT WHEN NECESSARY FOR GRADING PURPOSES.
24. STRIP TOPSOIL FROM ALL CUT AND FILL AREAS AND STOCKPILE. UPON COMPLETION OF GENERAL GRADING, SPREAD TOPSOIL OVER ALL AREAS TO RECEIVE TOPSOIL TO A MINIMUM DEPTH OF 6". CONTRACTOR SHALL SUPPLY ADDITIONAL TOPSOIL IF INSUFFICIENT QUANTITIES EXIST ON SITE.
25. TOP OF GRATE ELEVATIONS AND LOCATION OF COORDINATES FOR DRAINAGE STRUCTURES SHALL BE AS SHOWN ON THE DETAIL, UNLESS NOTED OTHERWISE. THE GRATES SHALL SLOPE LONGITUDINALLY WITH THE PAVEMENT GRAD.
26. ALL DRAINAGE CONSTRUCTION MATERIALS AND INSTALLATION SHALL CONFORM TO THE REQUIREMENTS AND SPECIFICATIONS OF THE LOCAL GOVERNING AGENCY.
27. RELOCATION OF EXISTING PLANT MATERIALS SHALL BE COORDINATED WITH THE OWNER AND RELOCATED TO A DESIGNATED AREA ON SITE.
28. POSITIVE DRAINAGE SHALL BE ESTABLISHED AS THE FIRST ORDER OF WORK AND SHALL BE MAINTAINED AT ALL TIMES DURING AND AFTER CONSTRUCTION. SOIL SOFTENED BY PERCHED WATER IN FOUNDATION AND PAVEMENT AREAS MUST BE UNDERCUT AND REPLACED WITH SUITABLE FILL MATERIALS APPROVED BY THE GEOTECHNICAL ENGINEER. GROUNDWATER INFILTRATION INTO EXCAVATIONS SHOULD BE EXPECTED, AND THE WATER SHALL BE REMOVED USING GRAVITY DRAINAGE OR PUMPING.
29. ALL FILL MATERIAL IN THE BUILDING ENVELOPE(S) SHALL BE APPROVED BY THE GEOTECHNICAL ENGINEER PRIOR TO PLACEMENT. THIS MATERIAL SHALL BE PLACED IN LIFTS DIRECTED BY THE GEOTECHNICAL ENGINEER.
30. SEDIMENT REMOVED FROM SEDIMENT CONTROL STRUCTURES IS TO BE PLACED AT A SITE APPROVED BY THE ENGINEER. IT SHALL BE TREATED IN A MANNER SO THAT THE AREA AROUND THE DISPOSAL SITE WILL NOT BE CONTAMINATED OR DAMAGED BY THE SEDIMENT IN THE RUN-OFF. COST FOR THIS TREATMENT IS TO BE INCLUDED IN PRICE BID FOR EARTHWORK. THE CONTRACTOR SHALL OBTAIN THE DISPOSAL SITE AS PART OF THIS WORK.
31. STOCKPILED TOPSOIL OR FILL MATERIAL IS TO BE TREATED SO THE SEDIMENT RUN-OFF WILL NOT CONTAMINATE SURROUNDING AREAS OR ENTER NEARBY STREAMS.
32. ANY SITE USED FOR DISPOSAL AND/OR STOCKPILE OF ANY MATERIAL SHALL BE PROPERLY PERMITTED FOR SUCH ACTIVITY. IT IS THE RESPONSIBILITY OF THE CONTRACTOR TO SEE THAT ALL REQUIRED PERMITS ARE SECURED FOR EACH PROPERTY UTILIZED. A COPY OF THE APPROVED PERMIT MUST BE PROVIDED TO THE INSPECTOR PRIOR TO COMMENCEMENT OF WORK ON ANY PROPERTY. FAILURE TO DO SO MAY RESULT IN THE CONTRACTOR REMOVING ANY ILLEGALLY PLACED MATERIAL AT HIS OWN EXPENSE.
33. IT SHALL BE THE CONTRACTOR'S RESPONSIBILITY TO WASTE EXCESS EARTH MATERIAL OFF SITE AT NO ADDITIONAL COST TO THE OWNER. THE CONTRACTOR SHALL FIRST OFFER THE EXCESS MATERIAL TO THE OWNER. IF NOT ACCEPTED BY THE OWNER, THE CONTRACTOR SHALL DISPOSE OF EARTH MATERIAL OFF SITE. IT SHALL ALSO BE THE CONTRACTOR'S RESPONSIBILITY TO IMPORT SUITABLE MATERIAL (AT NO ADDITIONAL COST TO THE OWNER) FOR EARTHWORK OPERATIONS IF SUFFICIENT AMOUNTS OF EARTH MATERIAL ARE NOT AVAILABLE ON SITE.



REVISIONS
DATE
APPROVED BY

GOULD TURNER GROUP, P.C.
ARCHITECTS & PLANNERS
4406 HASTING ROAD, SUITE 300
MAHARVILLE, MISSOURI 64073



WESLEY MEDICAL CENTER
LDR ADDITION & RENOVATION
WICHITA, KANSAS
CONSULTING ENGINEER
LDR 01/01

LITTLEJOHN ENGINEERING
1806 Twenty-First Avenue South, Nashville, Tennessee 37212 Phone: (615) 253-4444

BENCHMARKS

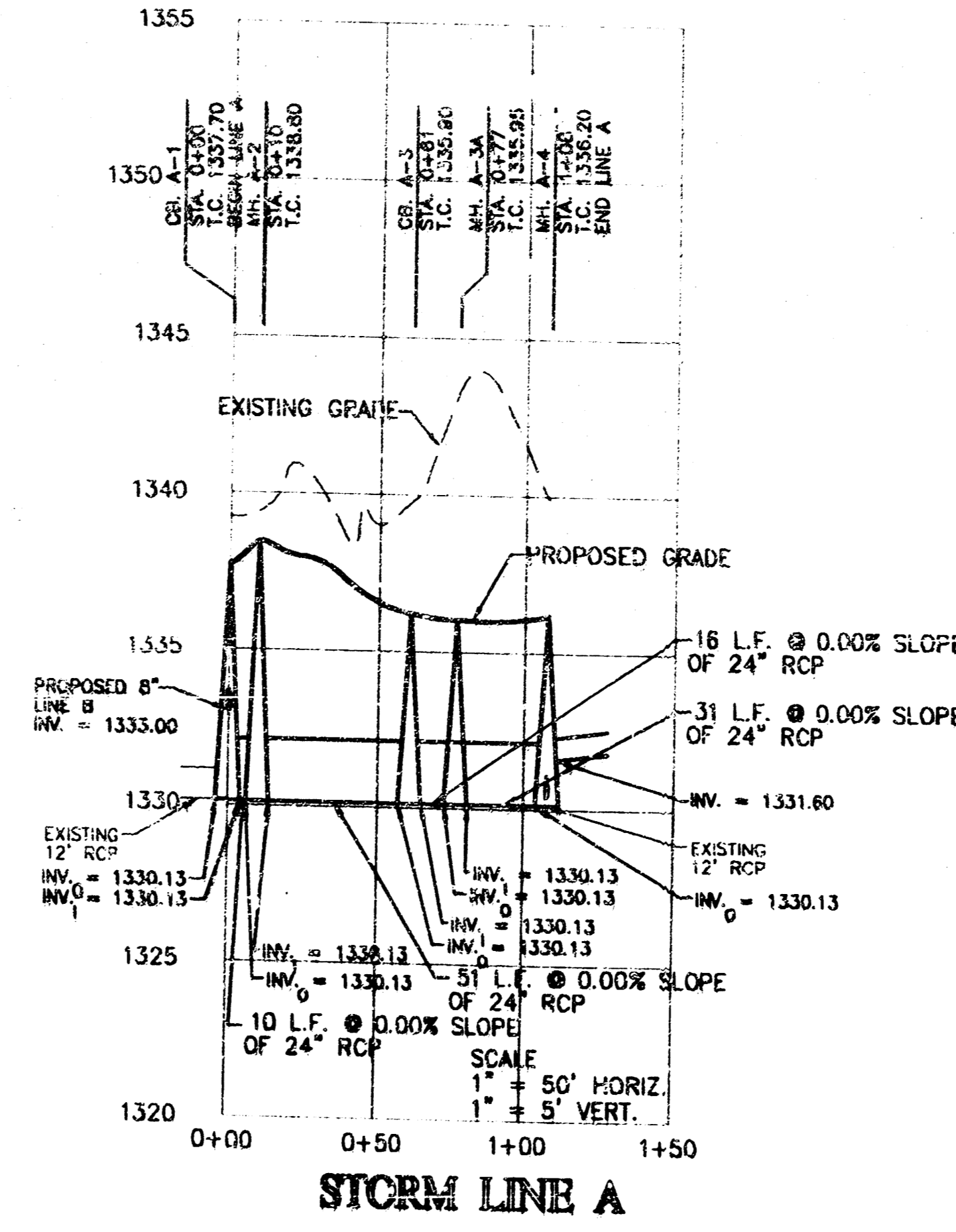
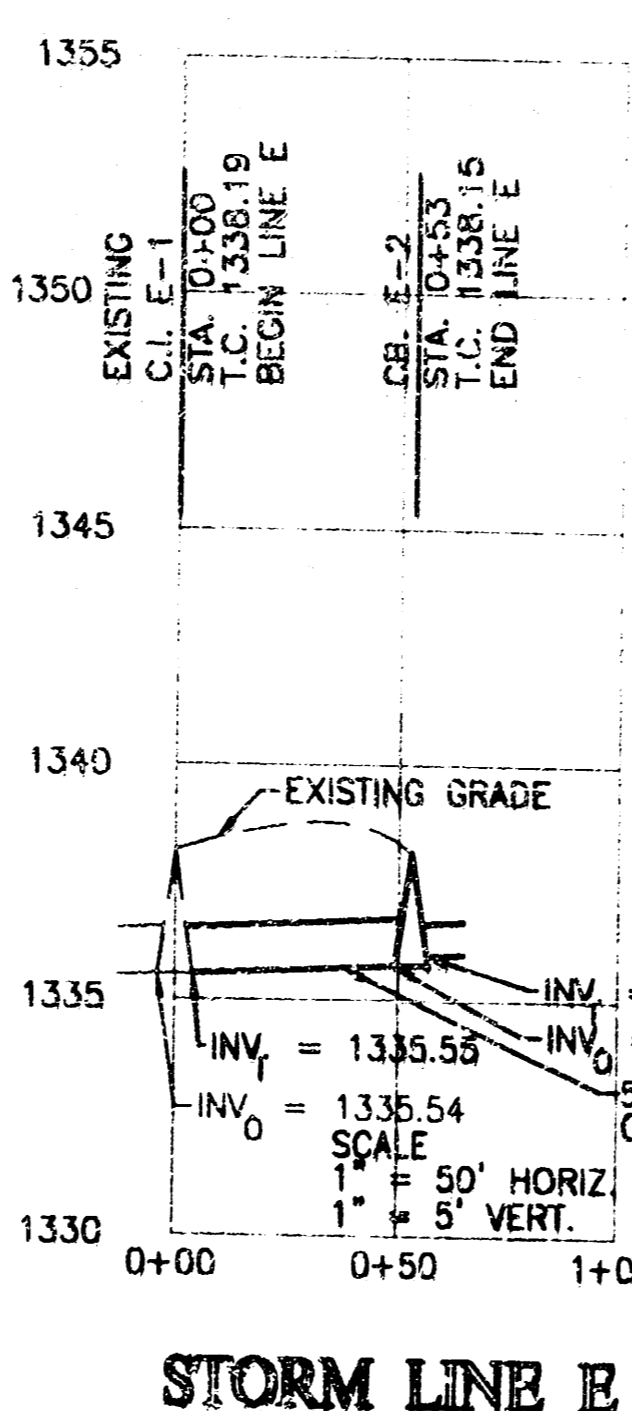
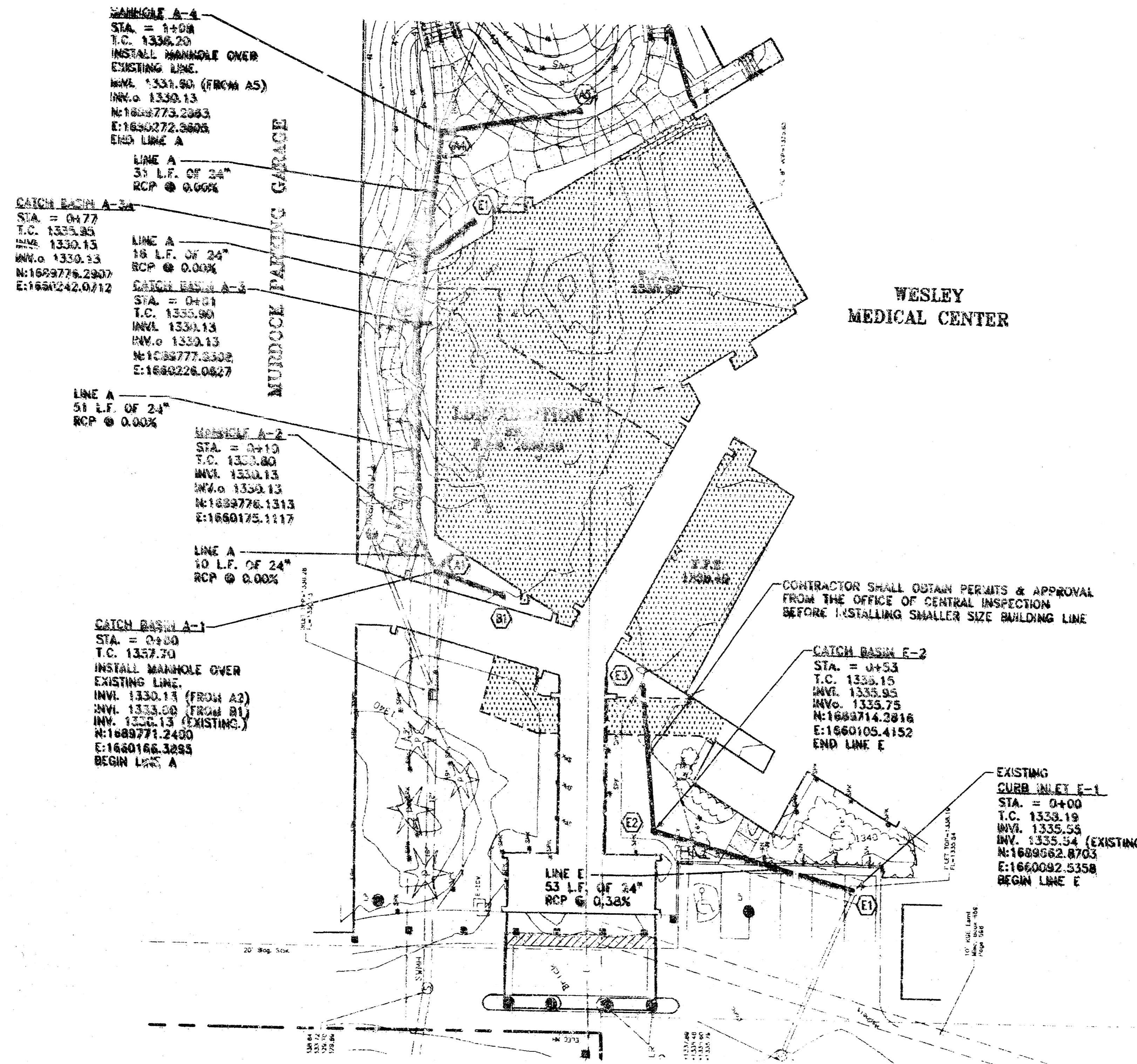
- cut Northwest corner of traffic signal base Southeast corner Hillside & Murdock.
Elevation = 150.135'
- cut on crosswalk signal base, Northeast corner of Hillside & Central.
Elevation = 144.056'
- cut Northeast corner of light pole base at the Southeast corner of Hillside & Murdock.
Elevation = 145.32'
- cut on the East end of concrete hand rail North side of Central ±164' West of Ruton.
Elevation = 145.506'
- Disk in North end of RCBC 471' North of Edgemont, East side of Ruton.
Elevation = 145.378'
- on top of curb, North return Southeast corner Lot 3, Wesley Medical
Elevation = 154.551'

EXISTING FEATURES LEGEND

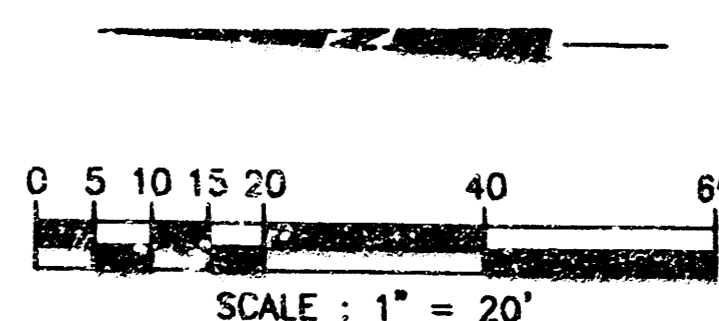
- | | |
|-----------------------------------|---------------------------------|
| ● DM - GAS METER | ● RP - POLE |
| ● YL - YARD LIGHT 0'-2" | ● LA - LAMP |
| ● EM - ELECTRIC MANHOLE | ● TM - TRAFFIC SIGNAL MANHOLE |
| ● SL - SIGNAL LIGHT | ● SC - SIGN CORNER |
| ● TA - TREE AND DIAMETER | ● SH - SPRINKLER HEAD |
| ● SA - TREE AND DIAMETER | ● SW - STAINING WALL |
| ● SN - SIGN | ● LP - LIGHT POLE TOP-HOOKER |
| ● IB - IRON BAR | ● FH - FIRE HYDRANT |
| ● B - BUSH | ● WV - WATER VALVE |
| ● PP - POWER POLE AND DEADMAN | ● WM - WATER METER |
| ● EB - ELECTRIC BOX | ● RC - REGULATION CONTROL VALVE |
| ● CD - CLEANOUT | ● GN - GRATE NLET |
| ● UEL - UNDERGROUND ELECTRIC LINE | ● TR - TELEPHONE RISER |
| ● F - FENCE | ● SSWP - STORM SEWER PIPE |
| ● BM - BENCHMARK | ● WL - WATER LINE |
| ● SMH - STORM WATER MANHOLE | ● SSWH - SANITARY SEWER LINE |
| ● SSMH - SANITARY SEWER MANHOLE | ● CL - GAS LINE |
| ● SWH - TELEPHONE MANHOLE | ● TL - TELEPHONE LINE |
| ● B - BUILDING | ● L - LIGHT |
| ● OHE - OVERHEAD ELECTRIC LINE | ● LB - LOG OF BUSHES |
| ● P - POST | ● HD - HOOD DRAIN |
| ● C - CHISELED "X" CUT | ● LR - LIGHT POLE 2'-10" |
| ● O - OVERHANG | ● OHTV - OVERHEAD CABLE TV LINE |
| | ● MS - MOUNTING SENSOR |

PROPOSED FEATURES LEGEND

- | | |
|-----------------------------------|--------|
| STORM PIPE & INLET | —●— |
| PROPOSED CONTOUR | —90— |
| DRAINAGE STRUCTURE | —(C)— |
| DOMESTIC SERVICE | —2" W— |
| FIRE SERVICE | —8" F— |
| GAS LINE | —G— |
| WATER LINE WITH 90° THRUST BLOCK | —W— |
| SANITARY SEWER LINE WITH CLEANOUT | —S— |
| NEW FIRE HYDRANT | —FH— |
| UNDERGROUND ELECTRIC | —UG— |



NOTE
SEE SHEET C2.0 FOR GENERAL NOTES.



LITTLEJOHN ENGINEERING
ENGINEERS AND LAND PLANNERS
186 Tracy-Fink Avenue South, Nashville, Tennessee 37203 Phone 615-385-5144

GOULD TURNER GROUP, P.C.
 ARCHITECTS & PLANNERS
 4400 HAWKING ROAD, SUITE 1000
 NASHVILLE, TENNESSEE 37205

WESLEY MEDICAL CENTER
 LDR ADDITION & RENOVATION
 WICHITA, KANSAS
 CHAIRMAN: LARRY BOST
 VICE CHAIRMAN: LARRY BOST

REVISIONS: _____ DATE: 11/04/14

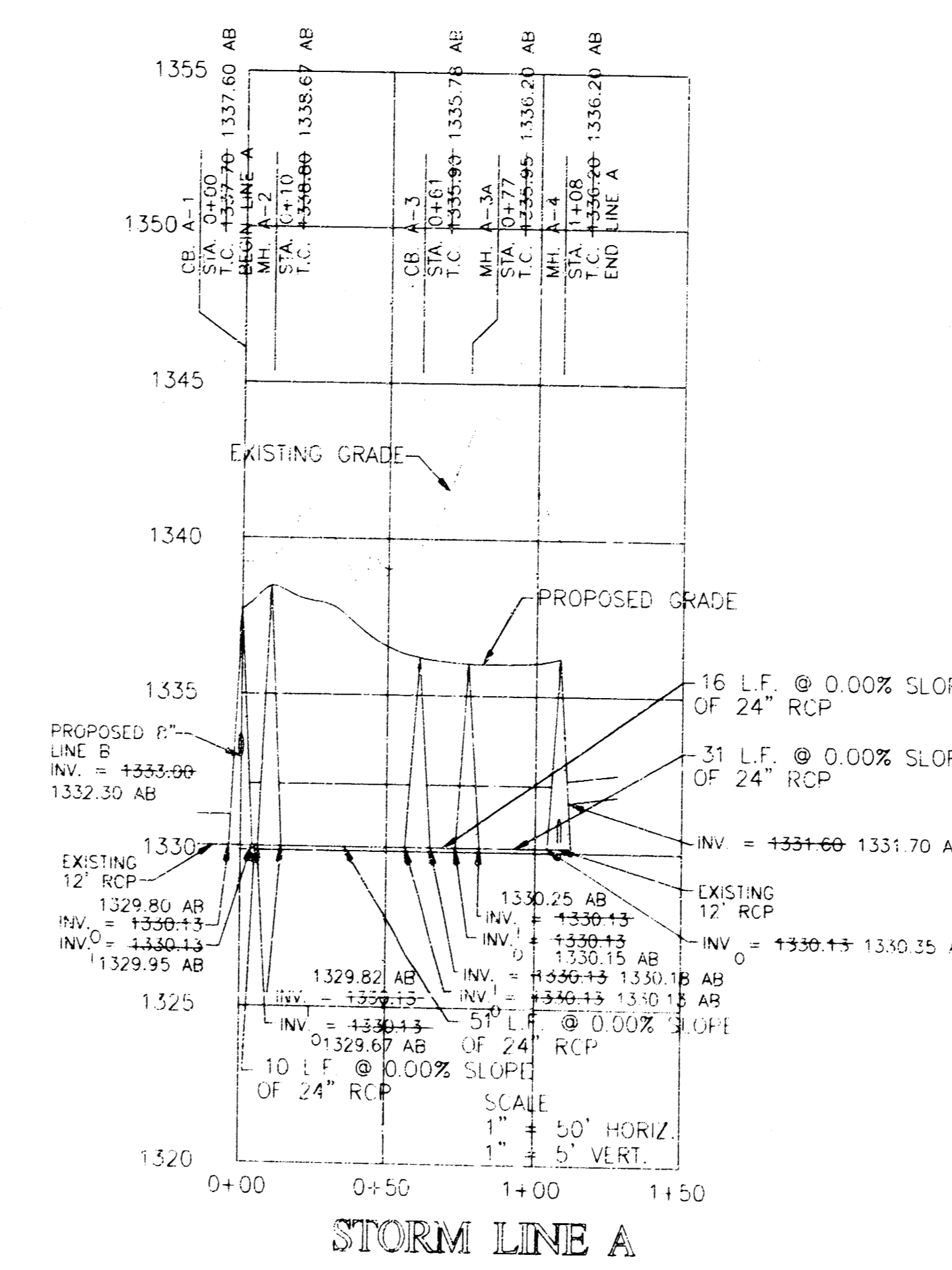
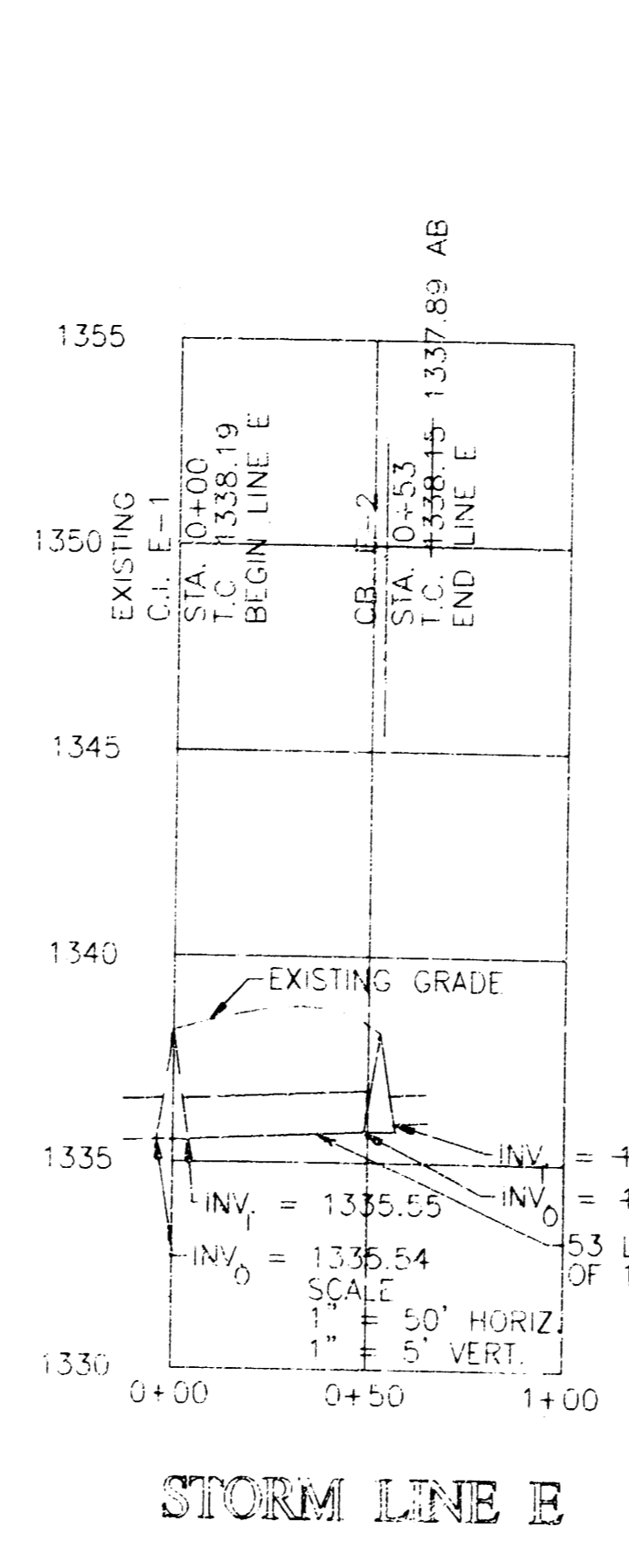
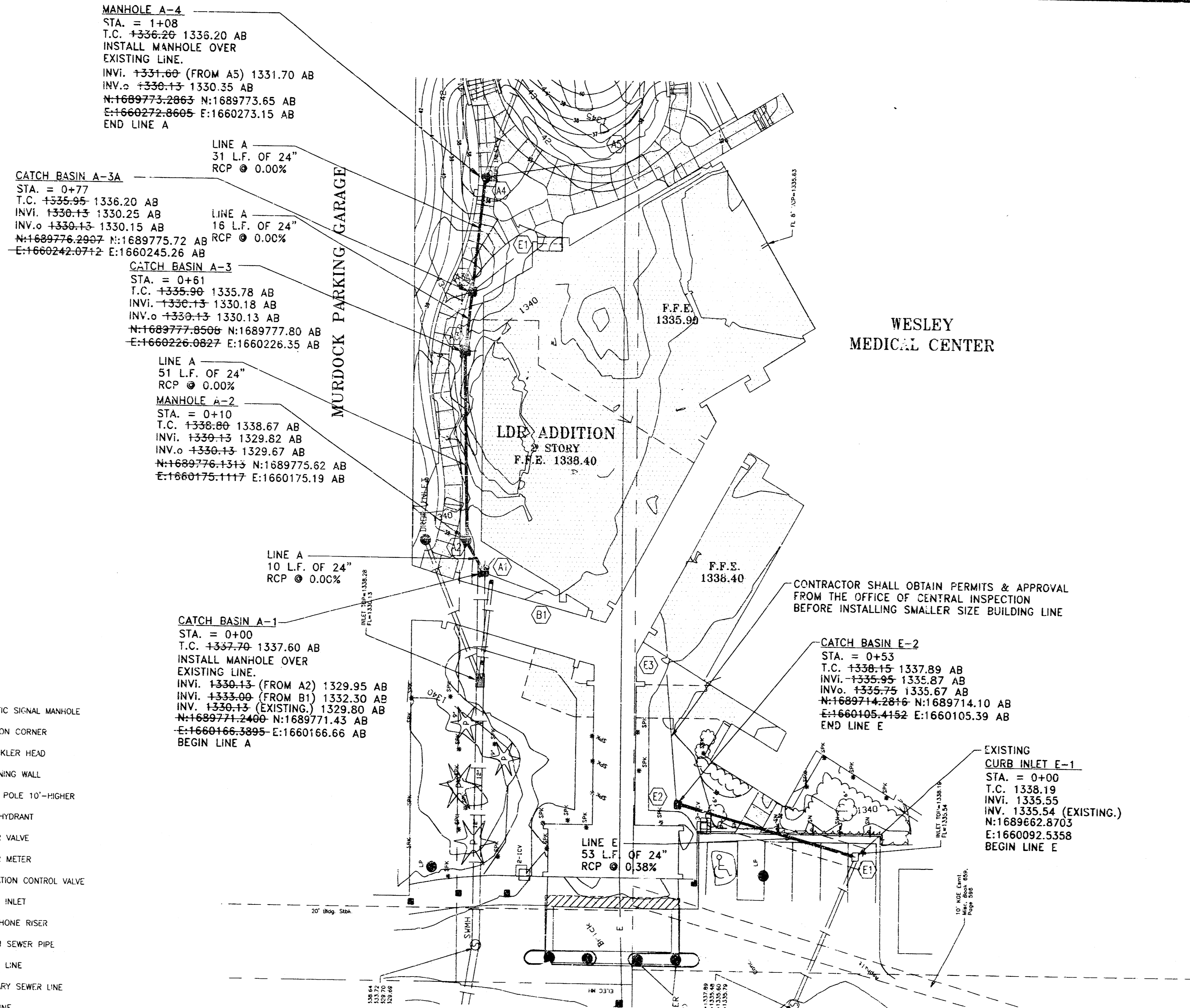
- BENCHMARKS**
- cut Northwest corner of traffic signal base Southeast corner Hillside & Murdock.
Elevation = 150.135'
 - cut on crosswalk signal base, Northeast corner of Hillside & Central.
Elevation = 144.096'
 - cut Northeast corner of light pole base at the Southeast corner of Hillside & Murdock.
Elevation = 145.32'
 - cut on the East end of concrete hand rail North side of Central ±164' West of Rutan.
Elevation = 145.506'
 - Disk in North end of RCBC ±71' North of Edgemont, East side of Rutan.
Elevation = 145.376'
 - on top of curb, North return Southeast corner Lot 3, Wesley Medical 3rd Addition.
Elevation = 154.551'

EXISTING FEATURES LEGEND

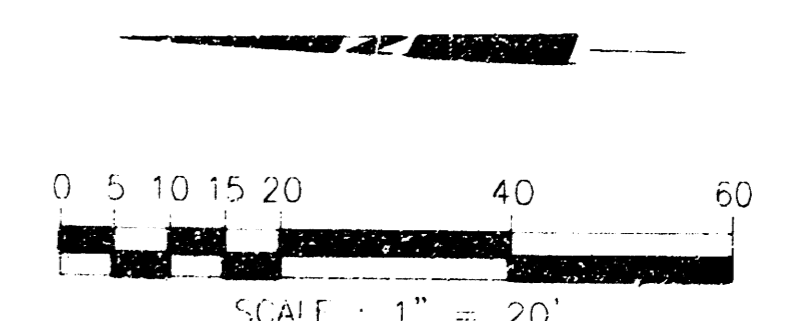
- | | |
|--|--|
| ● GM - GAS METER | ● POLE - POLE |
| ● YLD - YARD LIGHT 0'-2" | --- GATE |
| ● ELEC MH - ELECTRIC MANHOLE | TRAF. MH - TRAFFIC SIGNAL MANHOLE |
| ● SIG LIGHT - SIGNAL LIGHT | △ SECTION CORNER |
| ● GN - TREE AND DIAMETER | ● SPK - SPRINKLER HEAD |
| ● LN - TREE AND DIAMETER | --- RETAINING WALL |
| ● SN - SIGN | ● LP - LIGHT POLE 10'-HIGHER |
| ● IP - IRON BAR | ● FH - FIRE HYDRANT |
| ○ BUSH | ● WV - WATER VALVE |
| ● PP-X - POWER POLE AND DEADMAN | ● WM - WATER METER |
| ● EOE - ELECTRIC BOX | □ ICV - IRRIGATION CONTROL VALVE |
| ● CO - CLEANOUT | ■ GRATE INLET |
| --- E - UNDERGROUND ELECTRIC LINE | ■ TR - TELEPHONE RISER |
| --- X - FENCE | --- STORM SEWER PIPE |
| ● BM - BENCHMARK | --- W - WATER LINE |
| ● SWMH - STORM WATER MANHOLE | --- S - SANITARY SEWER LINE |
| ● SSMH - SANITARY SEWER MANHOLE | --- G - GAS LINE |
| ● SWB - TELEPHONE MANHOLE | --- T - TELEPHONE LINE |
| --- BUILDINGS | □ INLET |
| --- CHE --- OHE - OVERHEAD ELECTRIC LINE | --- RD - ROW OF BUSHES |
| ● POST | ● RP - ROOF DRAIN |
| × XCUT - CHSLED "X" CUT | ● LP - LIGHT POLE 2'-10" |
| --- OVERHANG | --- OHTV --- CHTV - OVERHEAD CABLE TV LINE |
| | ● MS - MONITORING SENSOR |

PROPOSED FEATURES LEGEND

- | | |
|--------------------------------------|---------------------------------------|
| --- STORM PIPE & INLET | --- PROPOSED CONTOUR |
| --- DRAINAGE STRUCTURE | --- DOMESTIC SERVICE |
| --- FIRE SERVICE | --- GAS LINE |
| --- WATER LINE WITH 90° THRUST BLOCK | --- SANITARY SEWER LINE WITH CLEANOUT |
| --- NEW FIRE HYDRANT | --- UNDERGROUND ELECTRIC |



NOTE
SEE SHEET C2.0 FOR GENERAL NOTES.



AS-BUILT DECEMBER 2003

LITTLEJOHN ENGINEERING
ENGINEERING AND LAND PLANNING
1835 Twenty-First Avenue South Nashville, Tennessee 37212 Phone 615-385-4144

REVISIONS:
DATE: MARCH 14, 2002

GOULD TURNER GROUP, P.C.
ARCHITECTS & PLANNERS
4-00 HARDING ROAD, SUITE 1000
NASHVILLE, TENNESSEE 37205

GOULD TURNER GROUP

WESLEY MEDICAL CENTER
LDR ADDITION & RENOVATION
WICHITA, KANSAS
OWNER: 31605001
LEAF 2018

GRADING & DRAINAGE PLAN & PROFILE
C3.0