

GENERAL NOTES

1. Contractor will be required to provide a minimum advance notice of forty-eight (48) hours to utility companies prior to starting any excavation as follows:

Kansas One-Call 687-2470

The Contractor must notify the following in case of an emergency:

- Cox Communications 262-0661
- Kansas Gas Service 383-8600
- K.G.E. Electric 383-8630
- Peoples Natural Gas Company 1-800-303-0357
- Southwestern Bell Telephone Company 1-800-286-8313
- City of Wichita Water Department 262-6000
- City of Wichita Sewer Maintenance 262-6000

2. The Contractor shall give all property owners and/or tenants of developed property directly abutting the construction of this project a minimum of ten (10) days advance notice prior to start of construction.

3. The Contractor shall be responsible for preserving property irons. The Contractor will be required to re-establish any property irons which are damaged or destroyed by his construction operations. Such irons shall be re-established by a licensed land surveyor in accordance with state laws.

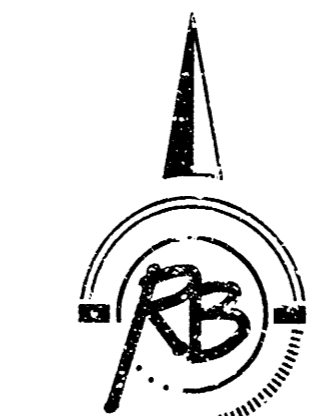
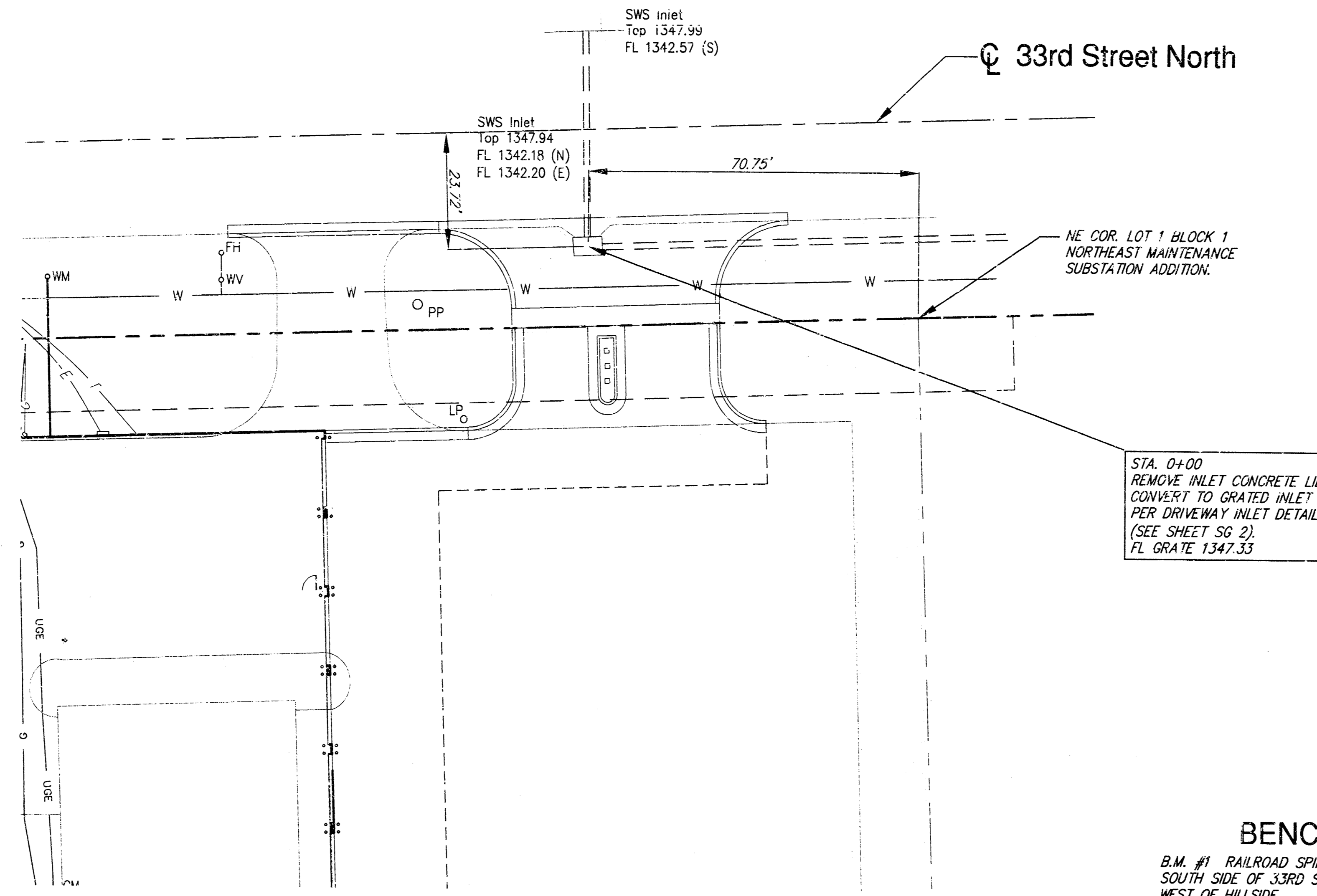
4. This project is to be constructed in accordance with City of Wichita Standard Specifications of City Projects, March 1998, and the latest edition of the Policy of Construction of Public Works Projects by Private Contract.

5. Any areas within public right of way which are disturbed by construction of this project shall be restored in accordance with Administrative Regulation AR78.

6. All storm sewer materials and construction to comply with City of Wichita standard specifications.

7. Connection of roof drain to storm sewer requires a permit from City of Wichita.

8. Not more than one lane traffic on 33rd St. may be closed at anytime during construction.

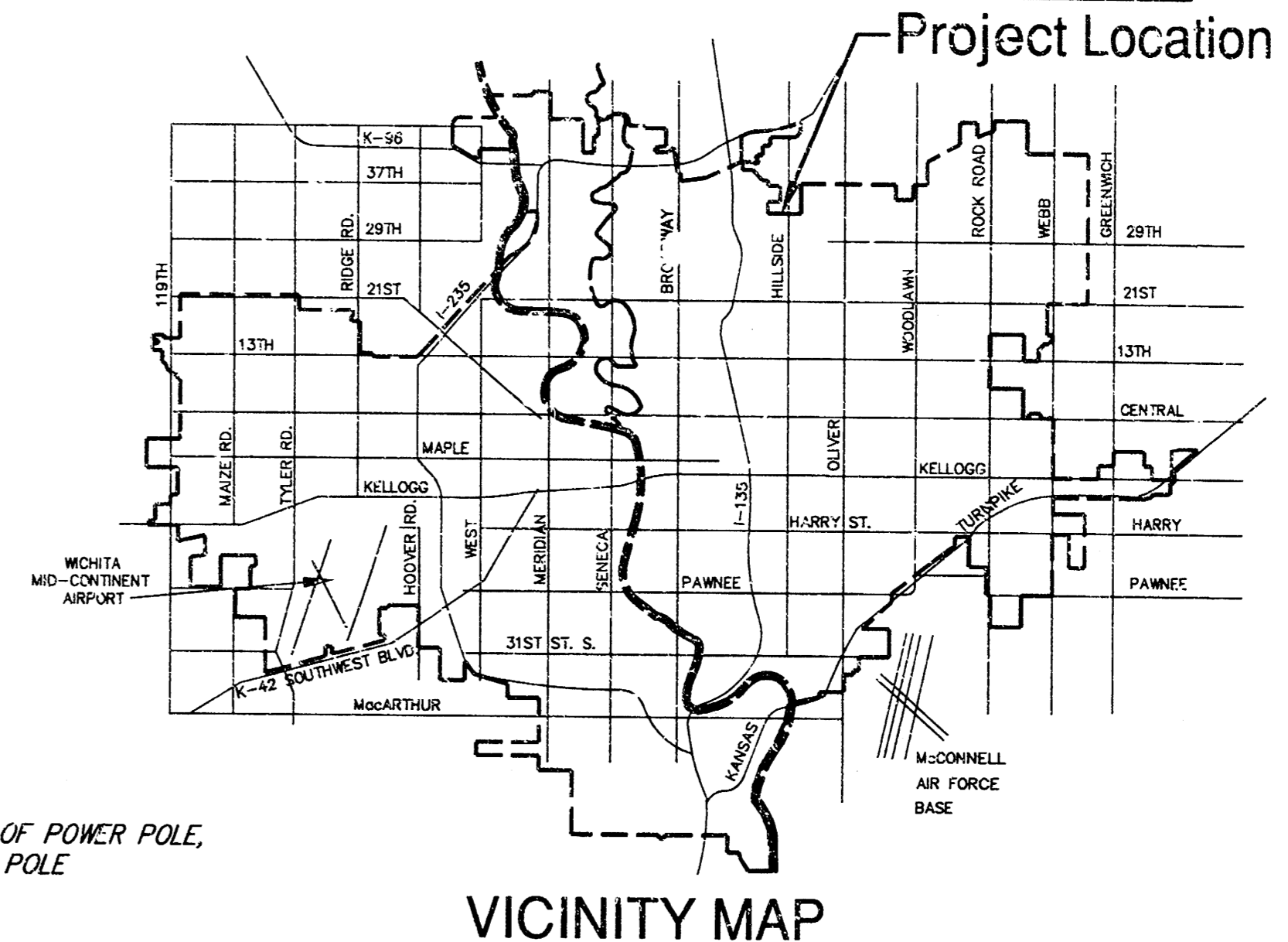


Scale: 1" = 20'

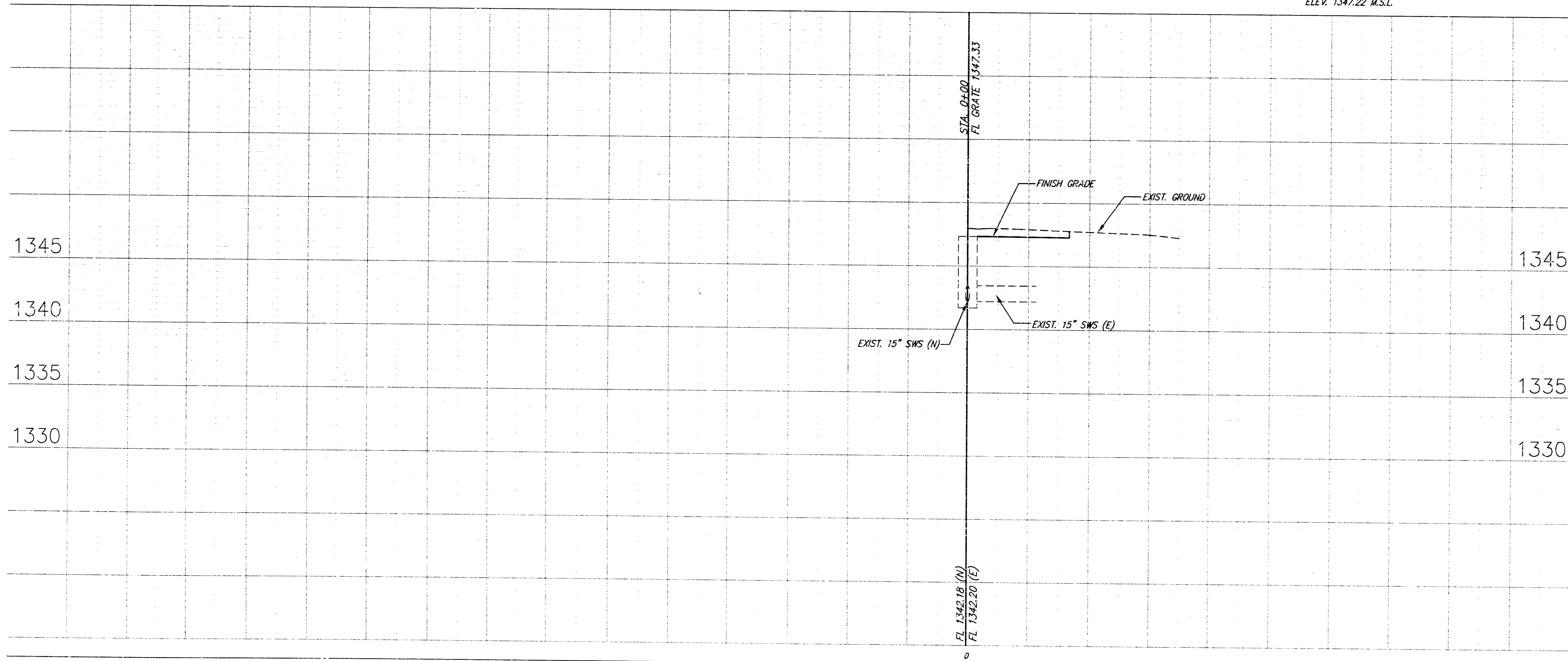
APPROVED AS NOTED
BY CITY ENGINEER OF WICHITA

Sanitary Sewers _____
Storm Sewers VRH 4/15/02
Driveway Approaches _____
Water Mains _____
Paving _____

NOTE TO CONTRACTORS
Inspection and testing for this project are to be provided by a Licensed Consulting Engineering Firm under contract with the Owner/Developer. Said inspection to be in accordance with the City of Wichita standard construction engineering practices and certified by a Licensed Professional Engineer. No work shall be performed in dedicated easements or public right-of-way by the Contractor without such inspection, nor shall any work be commenced without written authorization by the City Engineer.



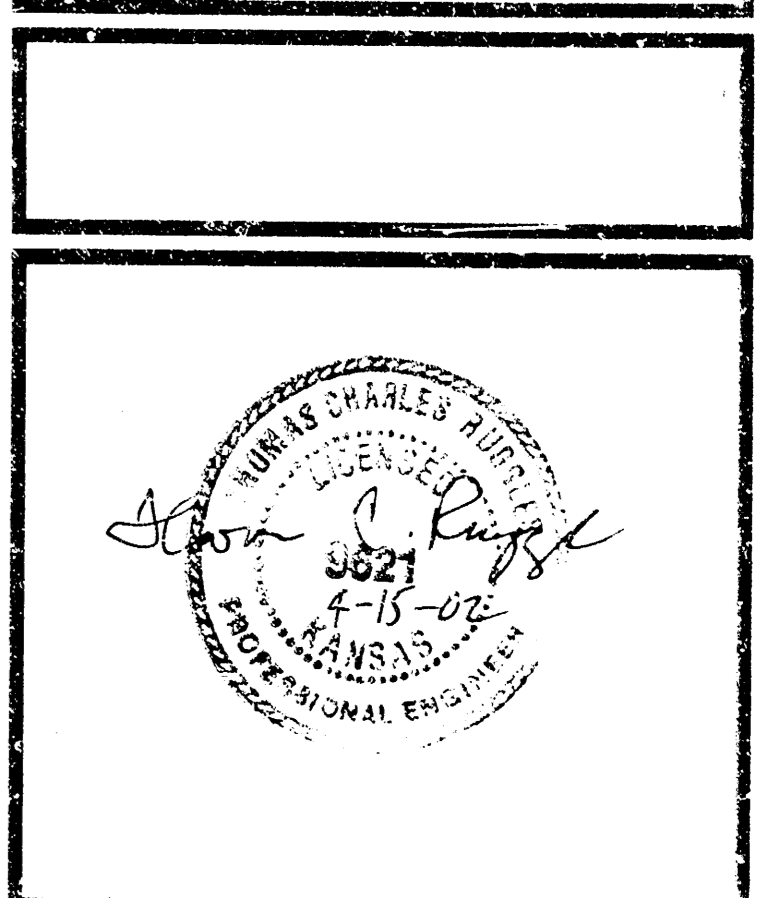
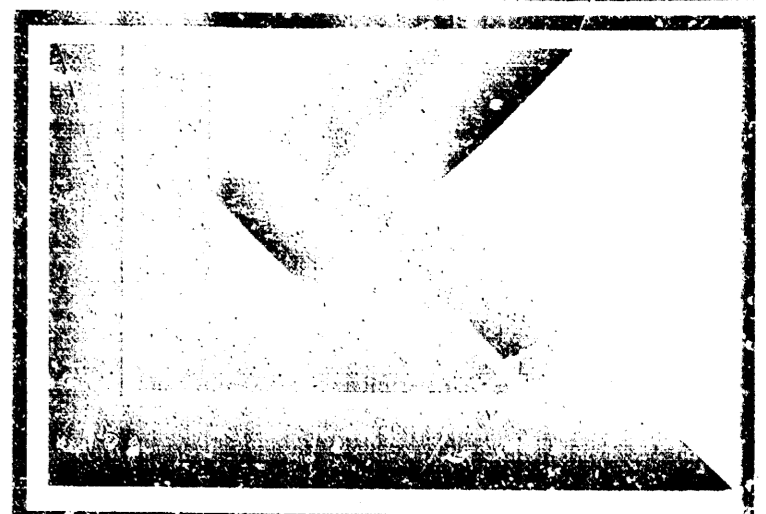
BENCH MARK:
B.M. #1 RAILROAD SPIKE IN NORTH FACE OF POWER POLE, SOUTH SIDE OF 33RD STREET NORTH, 2ND POLE WEST OF HILLSIDE.
ELEV. 1347.22 M.S.L.



Booked
D-164
9-29-03
RDL

PRINTS ISSUED	
DATE	PURPOSE

REVISIONS		
DATE	ITEM	NO.
4-15-02	CITY PROJECT NUMBER	



DRAWN	CHECKED
Jan. 15, 2002	

NORTHEAST SUBSTATION FACILITY
WICHITA WATER DEPARTMENT
WICHITA, KANSAS 67216

PROJECT NUMBER 73210-3C

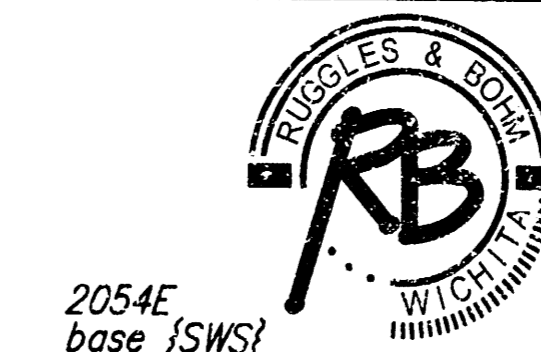
CONTACT - BILL O'NEAL
PROJECT ARCHITECT
316.264.0030 EXT. 384
316.264.9528 fax

STORM SEWER P.L.A.

SHEET TITLE
SHEET NUMBER

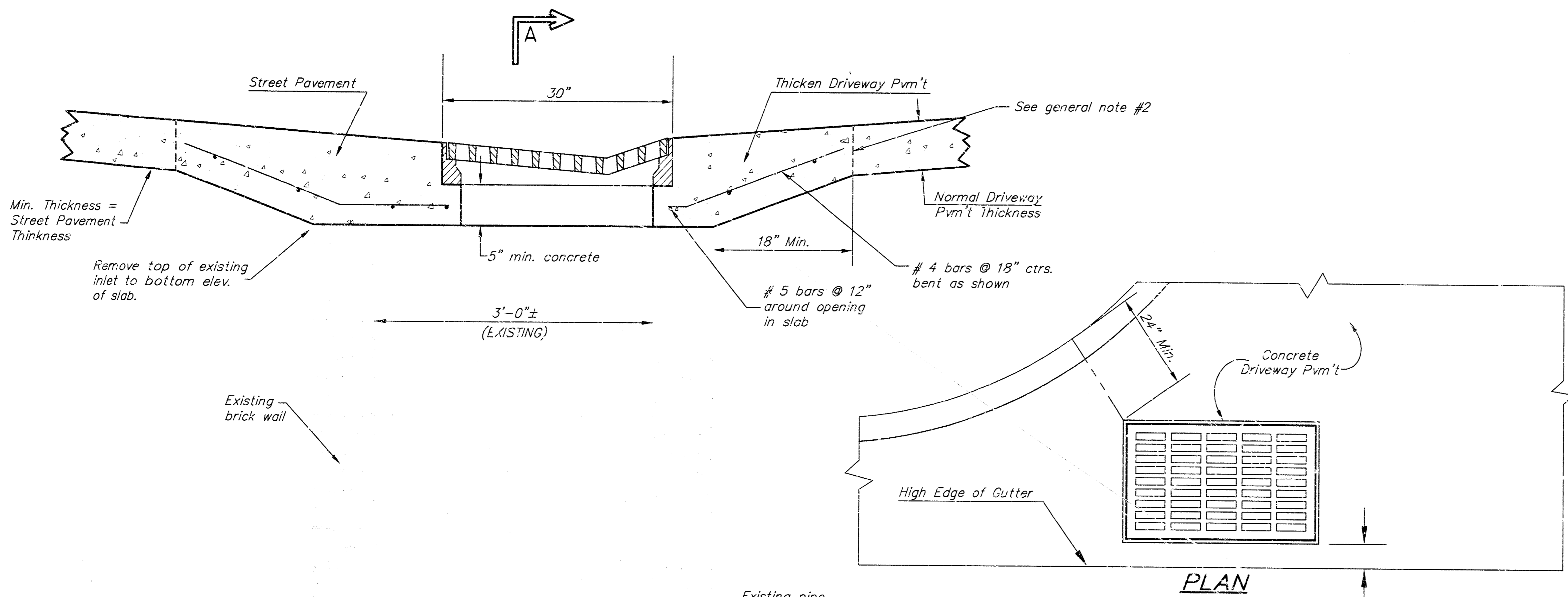
SG

OF _____



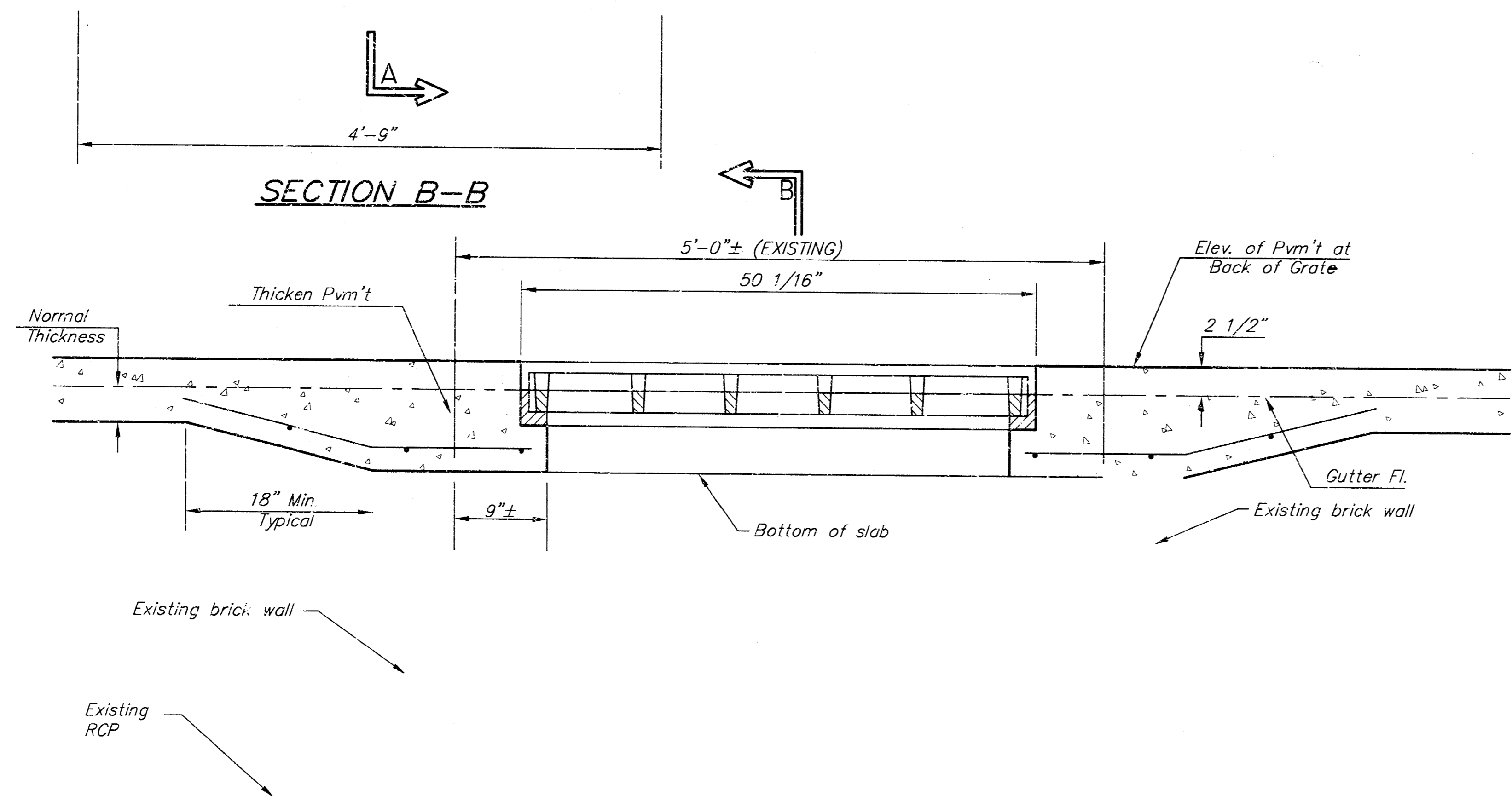
Ruggles & Bohm, P.A.
Engineering, Surveying, Land Planning
924 North Main (316) 264-8008
Wichita, Kansas 67203 (316) 264-4621 fax
www.rbkansas.com E-mail: info@rbkansas.com

2054E base [SWS] 2 14 02 02

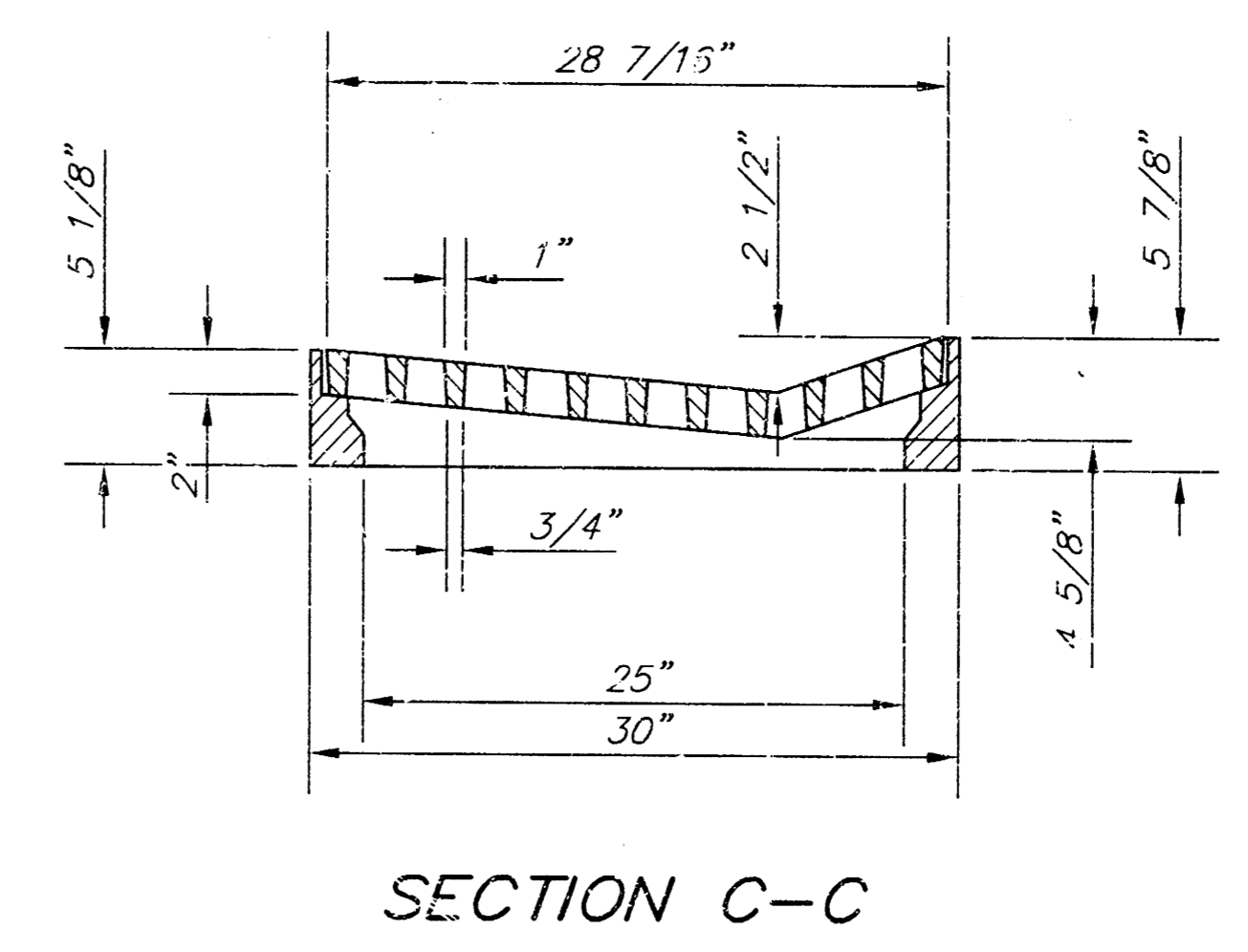
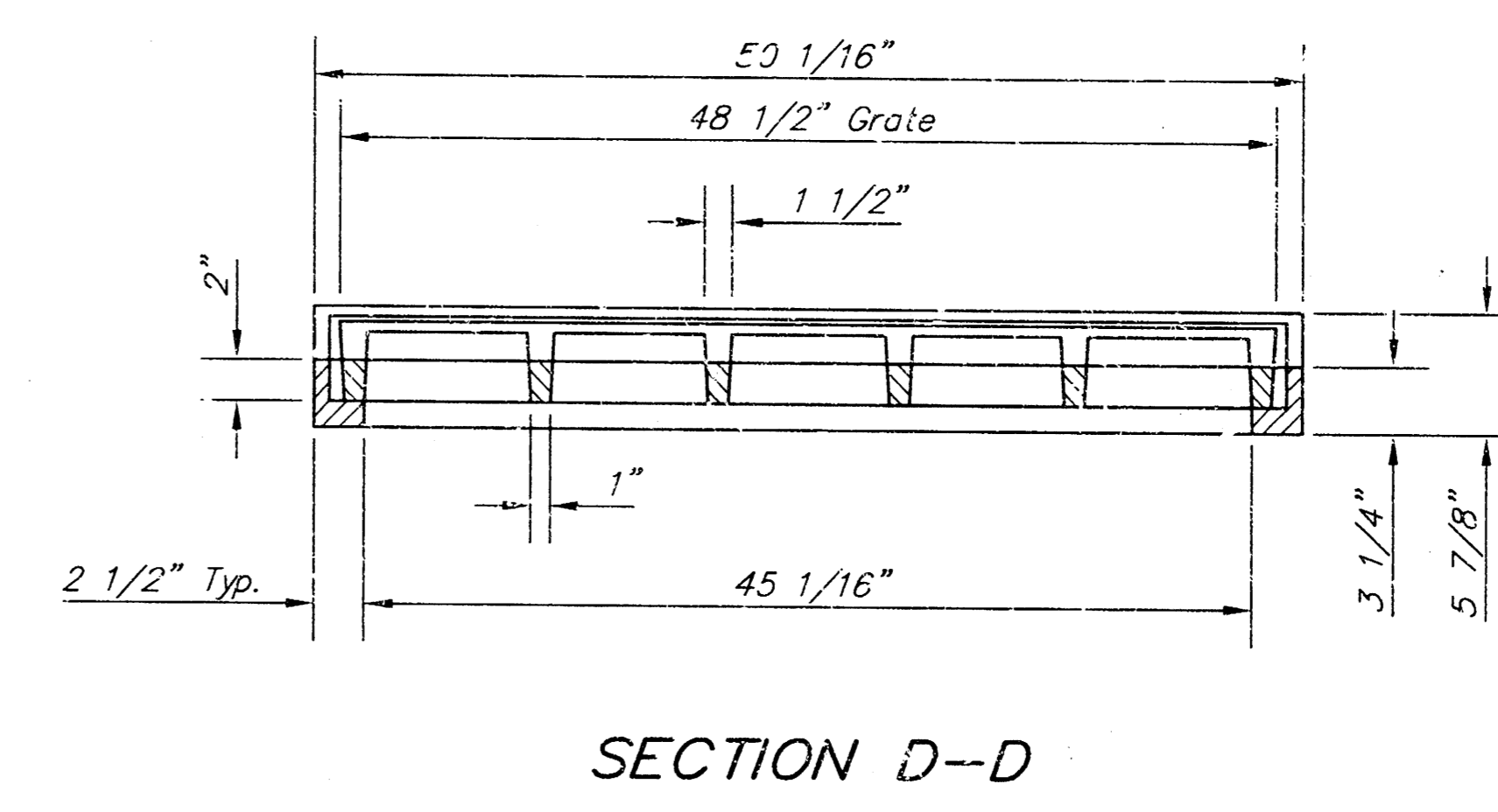
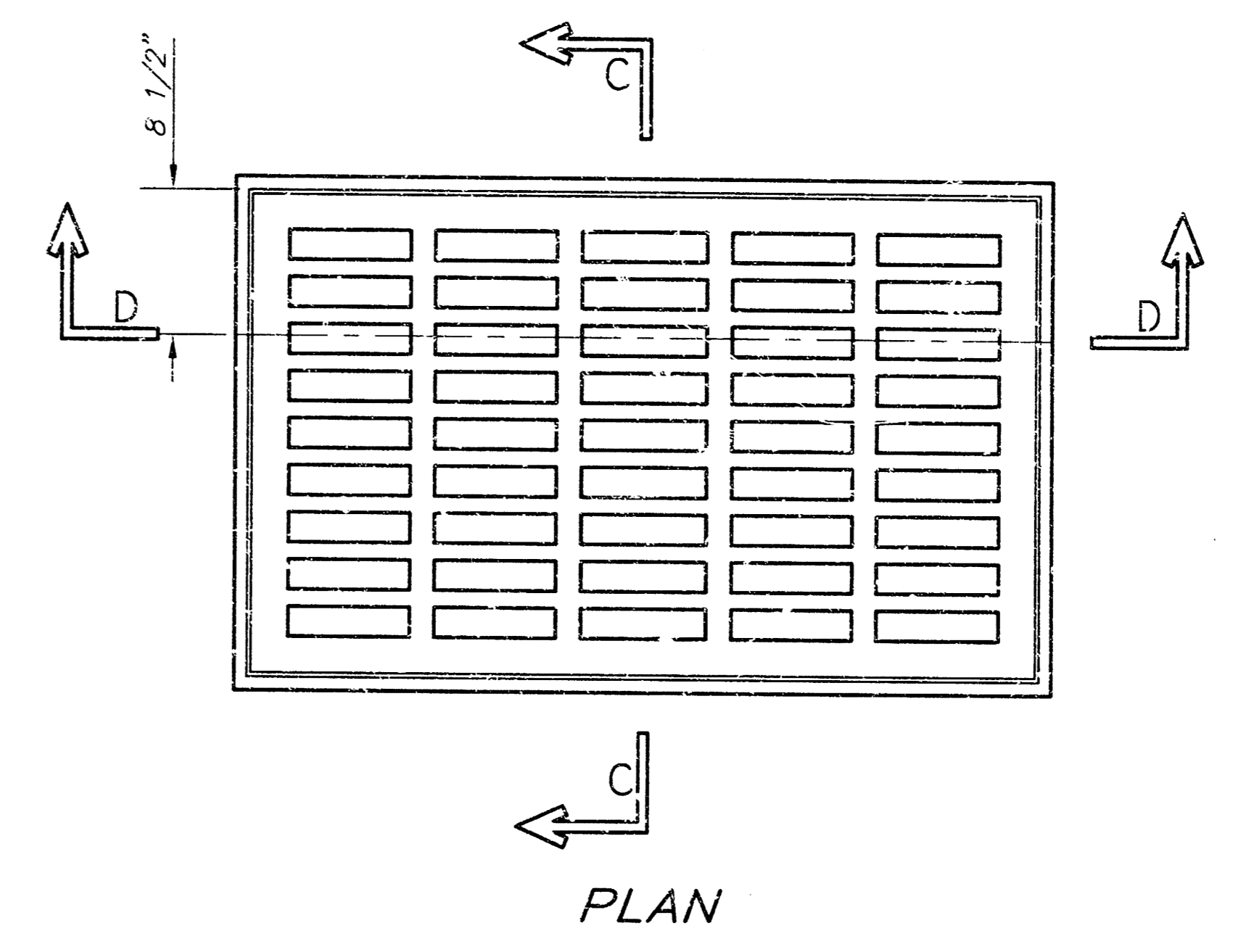


GENERAL NOTES

- Inlet Frames and Grates to be two (2) Deeter #2095 or approved equal.
- At contractor's option, concrete slab top may be precast.

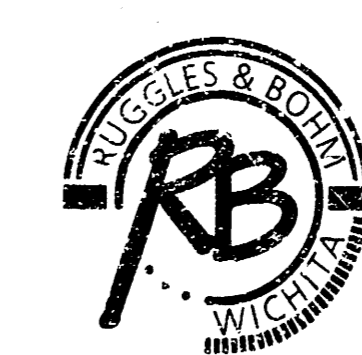


SECTION A-A
(EXISTING TYPE 1A CURB INLET)



DEETER #2095 FRAME & GRATE
TOTAL WEIGHT: 705 lbs.
(2 Each Required)

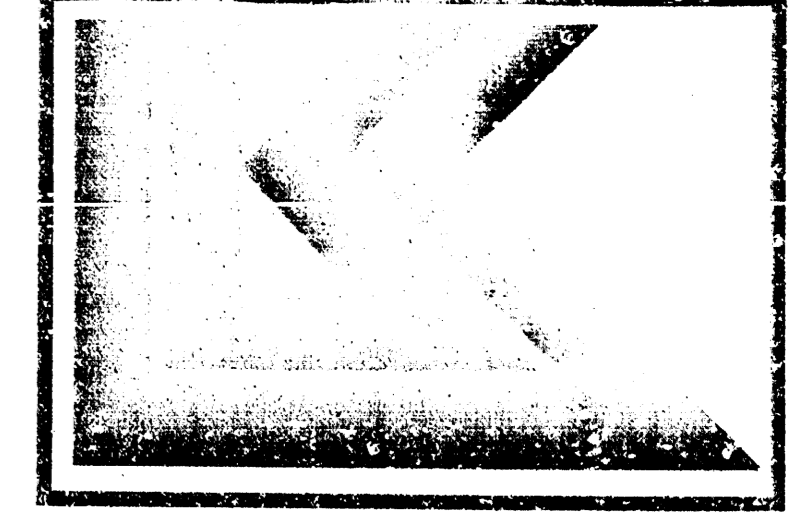
CITY OF WICHITA
PRIVATE PROJECT NO.
1232 PPS (607861)



Ruggles & Bohm, P.A.
Engineering, Surveying, Land Planning
924 North Main
Wichita, Kansas 67203
www.rbkansas.com
(316) 264-8003
(316) 264-4621 fax
E-mail: info@rbkansas.com

PRINTS ISSUED	
DATE	PURPOSE

REVISIONS		
DATE	ITEM	NO.
4-15-02	CITY PROJECT NUMBER	



DRAWN	CHECKED
Jan. 15, 2002	

NORTHEAST SUBSTATION FACILITY
WICHITA WATER DEPARTMENT
WICHITA, KANSAS 67216
PROJECT NUMBER 75210-30

CONTACT - BILL O'NEAL
PROJECT ARCHITECT
316.268.0230 EXT. 384
316.264.9528 fax

DRIVEWAY GRATED INLET CONVERSION
SHEET TITLE
SHEET NUMBER
SG
DF