

STORM WATER SEWER TO SERVE ONE KELLOGG PLACE 2ND ADDITION

BLOCK A, LOT 12

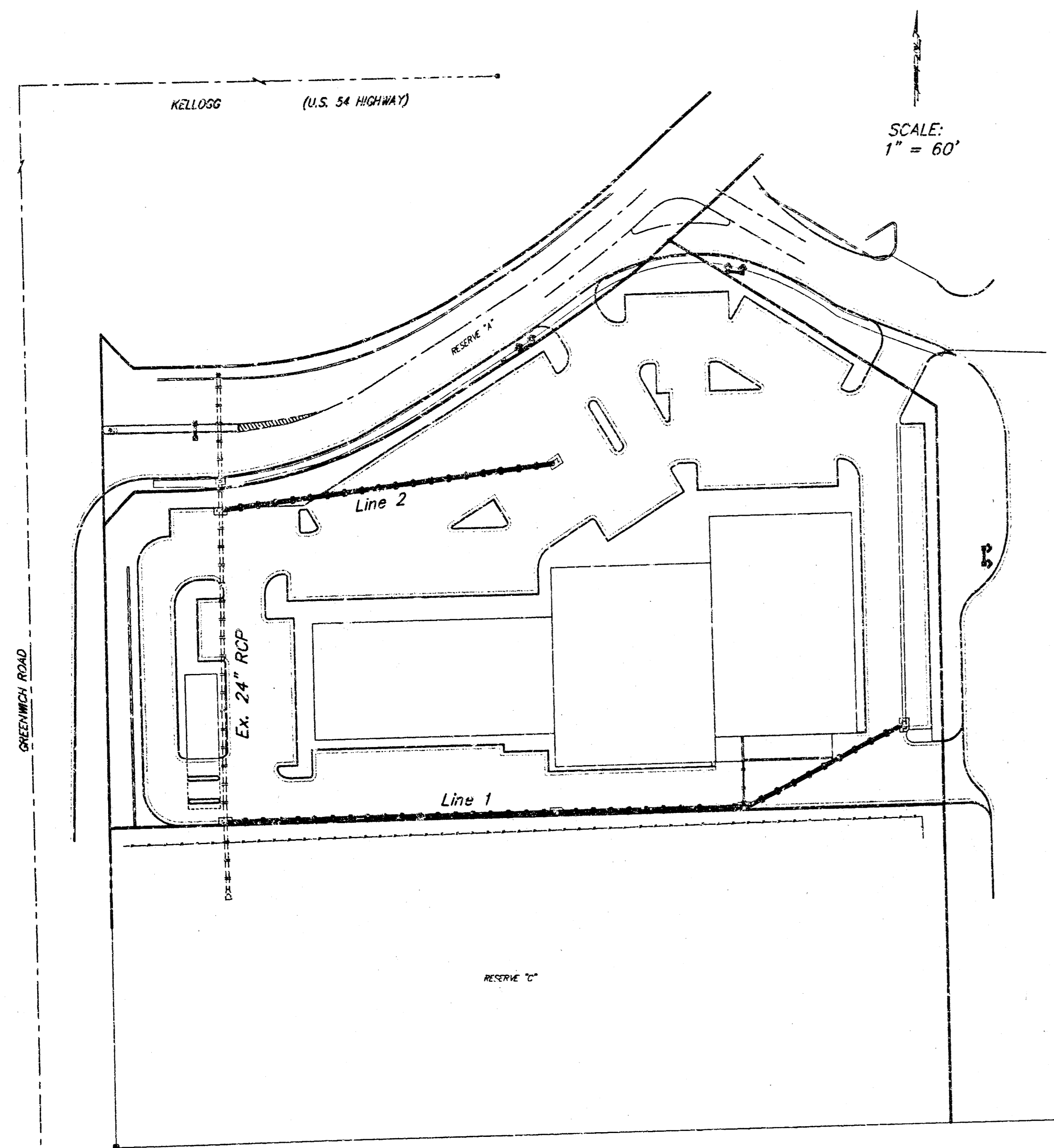
Private Project Number: 1234 PPS (607861)

CITY OF WICHITA, KANSAS

Michael E. Lindebak, P.E. City Engineer

May 2002

BOOKED
7/02
MEL
C-221



Index

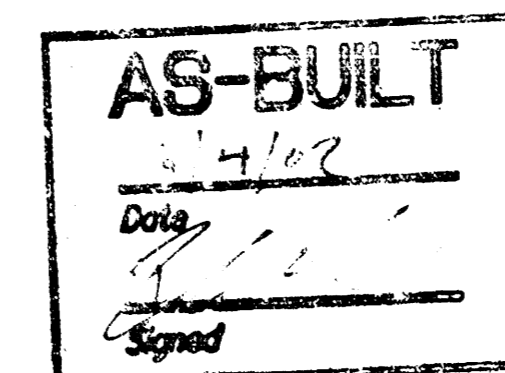
Cover Sheet	1
Plan/Profile Sheet - Line 1	2
Plan/Profile Sheet - Line 2	3
Drop Inlet & Sediment Barrier Detail	4
BMP Erosion Details	5
Copy Of Plat	6

Legal Description

Lot 12, Block A, One Kellogg Place 2nd Addition
Wichita, Sedgewick County, Kansas

Bench Marks

- Chiseled On Top Of Catch Basin. Approximately 12.7 ft. East & 22.4 ft. North of Eastern most Northeast Corner, Lot 12, Block A, One Kellogg Place 2nd Addition. Elev. = 172.57 (City Datum)
- RR Spike in North face of PP at S.E. Corner of Greenwich Road and Orme Street 48.61 East of Center Line. Elev. = 162.97 City Datum (1350.37 M.S.L.)



APPROVED AS NOTED
BY CITY ENGINEER OF WICHITA

Storm Sewers VRH 5/6/02

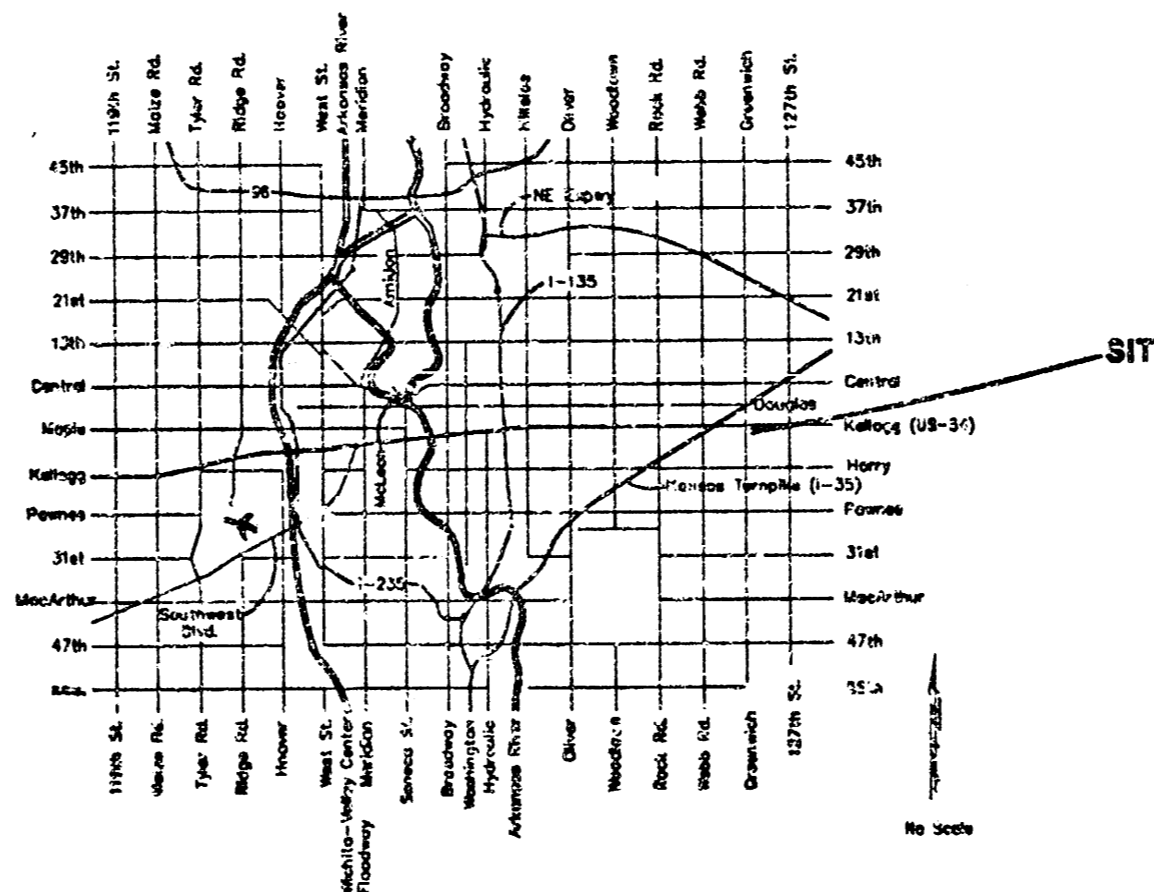
NOTE TO CONTRACTORS

Installation, inspection and testing for this project is to be provided by a Licensed Consulting Engineering Firm under contract with the Owner/Developer. Said inspection to be in accordance with the City of Wichita standard construction engineering practices and certified by a Licensed Professional Engineer. No work shall be performed in dedicated easements or public right-of-way by the Contractor without such inspection nor shall any work be commenced without written authorization by the City Engineer. All Construction and Materials shall comply with the City of Wichita Specifications and Standards (on file and available in the City Engineer's Office).

General Notes

- Contractor will be required to provide notice to utility companies a minimum of forty-eight (48) hours prior to any excavation, as follows:
Kansas One-Call 687-2470
The Contractor must notify the following in case of an emergency:
Cox Communications 262-4270
Kansas Gas Service Company 1-888-482-4950
Westar Energy (Electric) 383-8650
Aquila Energy (Gas) 1-800-303-2357
Southwestern Bell Telephone Company 1-800-286-8313
City of Wichita Water Department 268-4908
City of Wichita Sewer Maint. (San. Sewer) 268-4024
City of Wichita Storm Sewer Maint. 268-4090
City of Wichita Traffic Maint. 268-4034
- Utility service lines, poles, valve boxes, meters, et cetera are to be adjusted as necessary by others prior to construction unless the plans specifically call for their adjustment by the Contractor or unless the plans specifically identify a utility to be adjusted by its owner during construction. Existing utilities and their location, as shown on the plans represent the best information obtainable for design and shall be field verified. The contractor will be required to work around existing utilities within the right-of-way which do not conflict with proposed construction.
- Contractor shall not start work on the project until the project inspector is assigned to the project and is present on the site. Contractor shall not start on the project until all necessary bonds and permits have been obtained. Any work done without inspection will be required to be uncovered for inspection.
- Rubble from the removal of miscellaneous structures and excess excavation which is to be wasted shall be disposed of on sites to be provided by the Contractor. These sites shall be approved by the Engineer as to suitability, appearance and site location. Locations that, in the opinion of the Engineer, will leave an unsightly appearance will not be approved. All disposal sites must be approved by the Kansas Department of Health and Environment. Material either stockpiled or disposed of in a flood plain would require a Kansas State Board of Agriculture permit. Any material dumped in waters of the United States or wetlands is subject to U.S. Corps of Engineers permitting regulations. Any material buried or stockpiled beyond approved construction limits would require additional archaeological investigations unless buried in a previously approved borrow location.
- All storm sewers shall be installed in accordance with the most recent edition of City of Wichita, Kansas Standard Specifications for the Construction of City Projects.

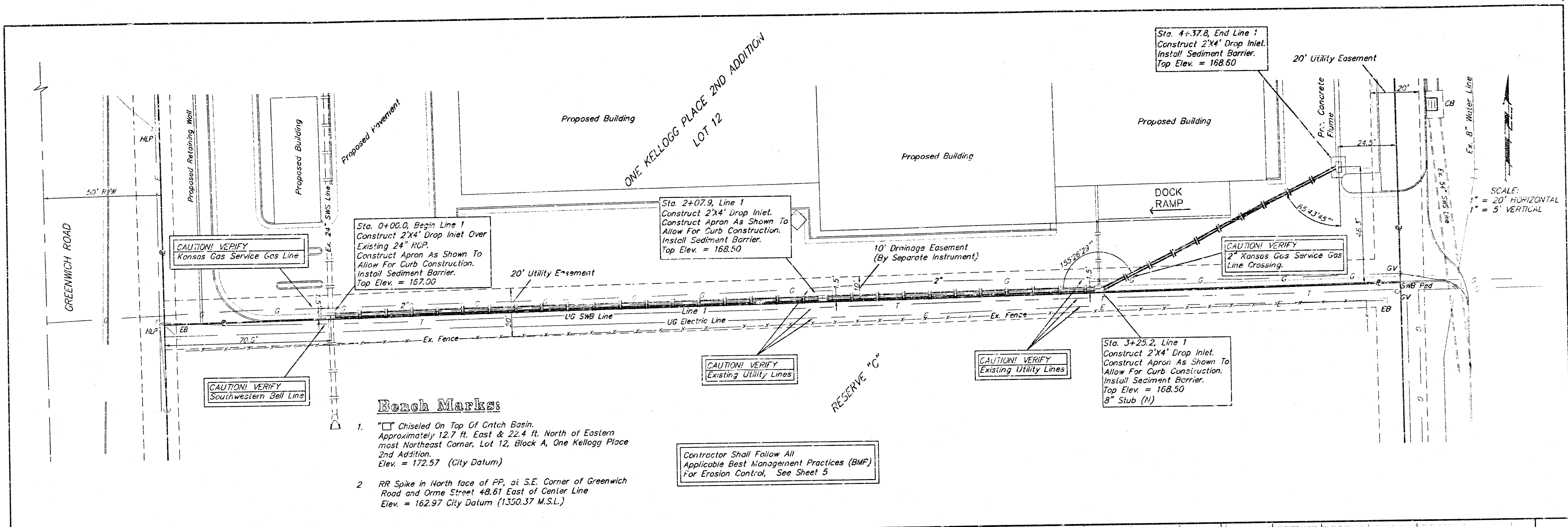
Location Map



KANSAS TURNPIKE AUTHORITY
CONDEMNATION CASE A-54126



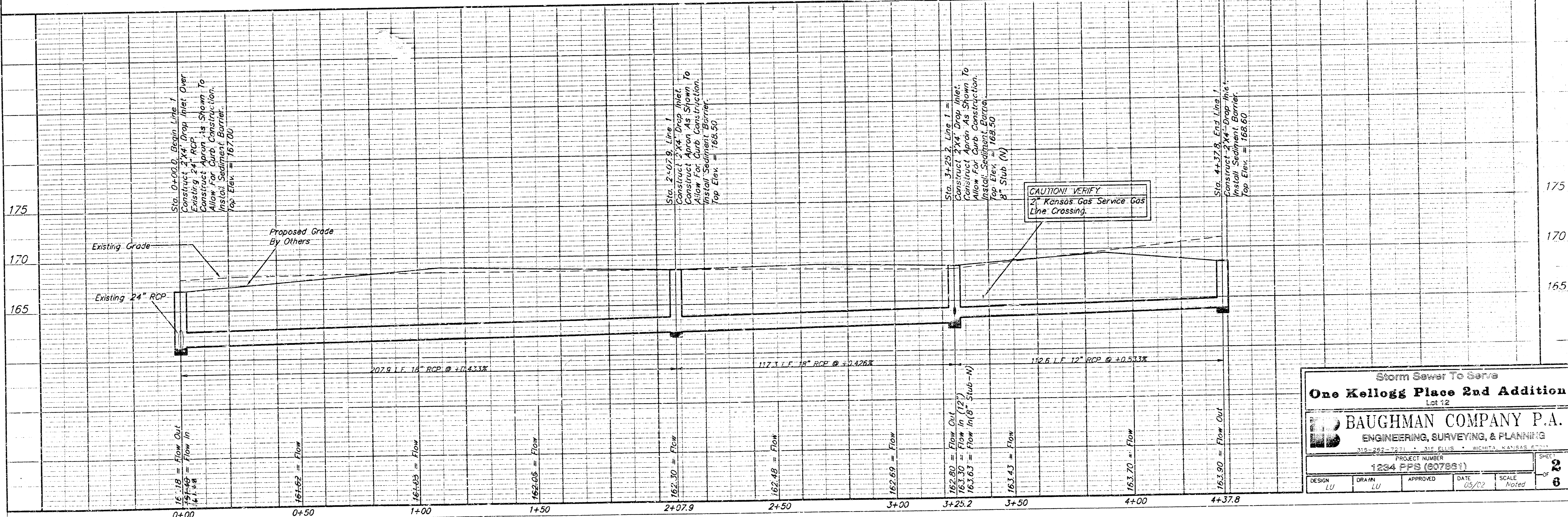
BAUGHMAN COMPANY P.A.
ENGINEERING, SURVEYING & PLANNING



Bench Marks:

1. Chiseled On Top Of Catch Basin. Approximately 12.7 ft. East & 22.4 ft. North of Eastern most Northeast Corner, Lot 12, Block A, One Kellogg Place 2nd Addition. Elev. = 172.57 (City Datum)
2. RR Spike in North face of PP, at S.E. Corner of Greenwich Road and Orme Street 48.61 East of Center Line Elev. = 162.97 City Datum (1350.37 M.S.L.)

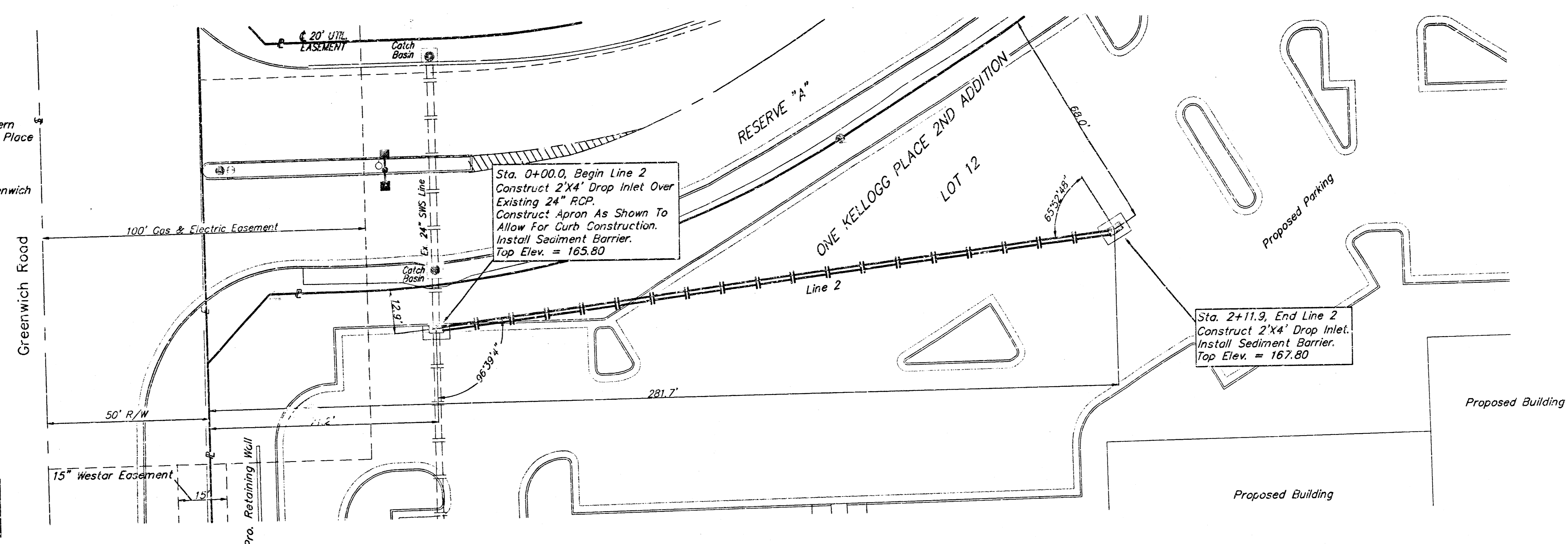
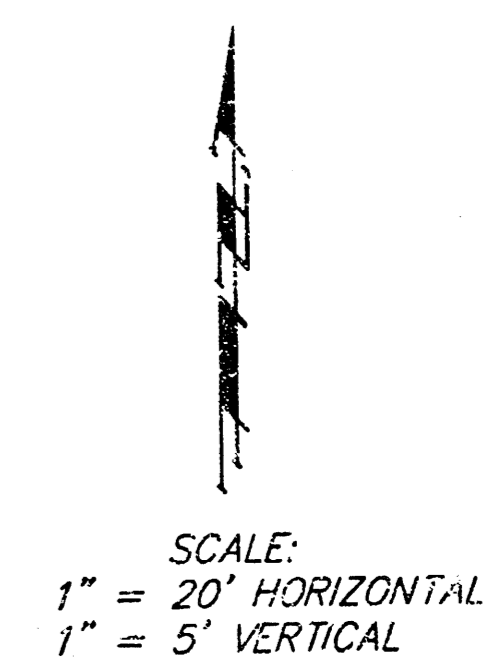
Contractor Shall Follow All Applicable Best Management Practices (BMP) For Erosion Control, See Sheet 5



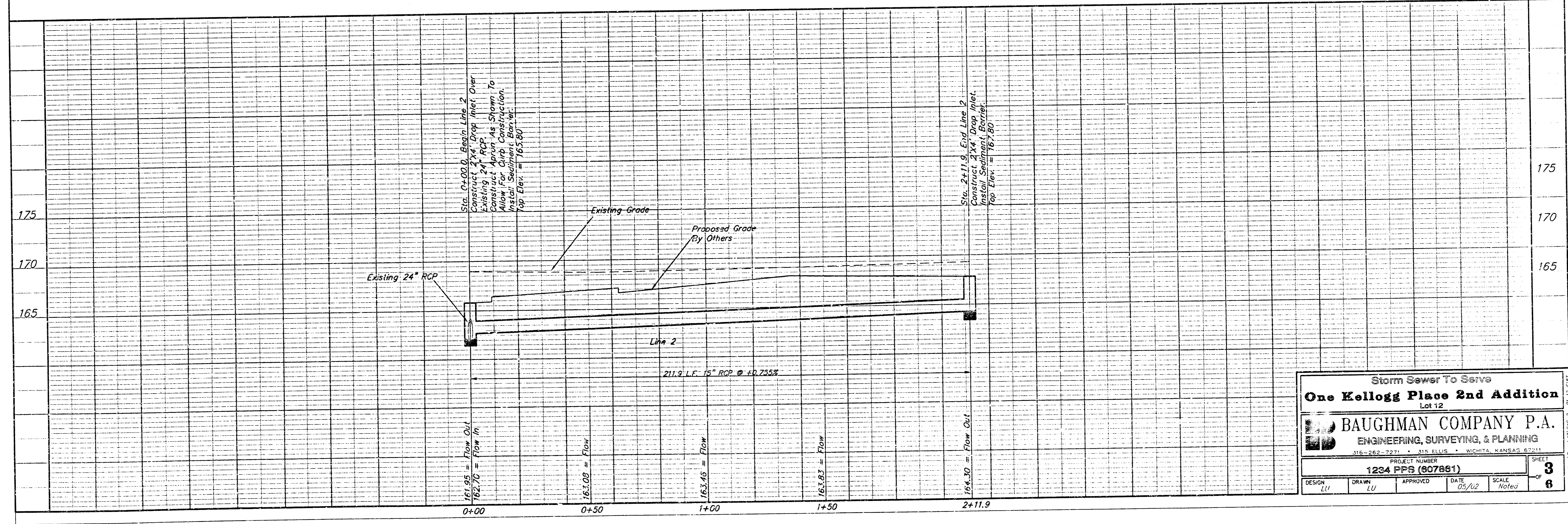
Storm Sewer To Serve
One Kellogg Place 2nd Addition
 Lot 12
BAUGHMAN COMPANY P.A.
 ENGINEERING, SURVEYING, & PLANNING
 315-262-2271 • 315 ELLIS • WICHITA, KANSAS 67201
 PROJECT NUMBER
 1234 PPS (807861)
 DESIGN LU DRAIN LU APPROVED DATE 05/02 SCALE Noted SHEET 2 OF 6

Bench Marks:

1. Chiseled On Top Of Catch Basin. Approximately 12.7 ft. East & 22.4 ft. North of Eastern most Northeast Corner, Lot 12, Block A, One Kellogg Place 2nd Addition. Elev. = 172.57 (City Datum)
2. RR Spike in North face of PP, at S.E. Corner of Greenwich Road and Orme Street 48.61 East of Center Line. Elev. = 162.97 City Datum (1350.37 M.S.L.)



Contractor Shall Follow All Applicable Best Management Practices (BMP) For Erosion Control, See Sheet 5



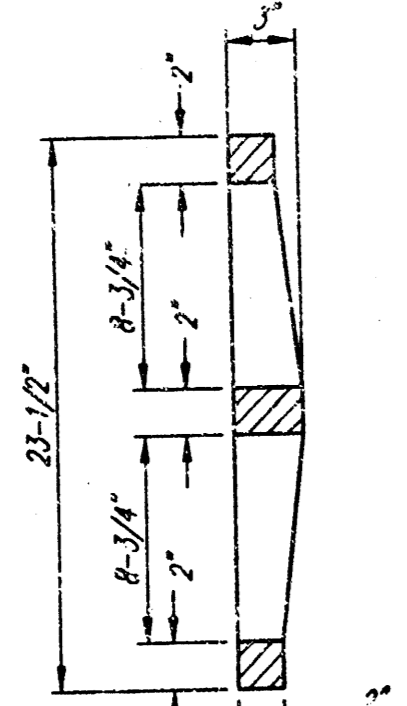
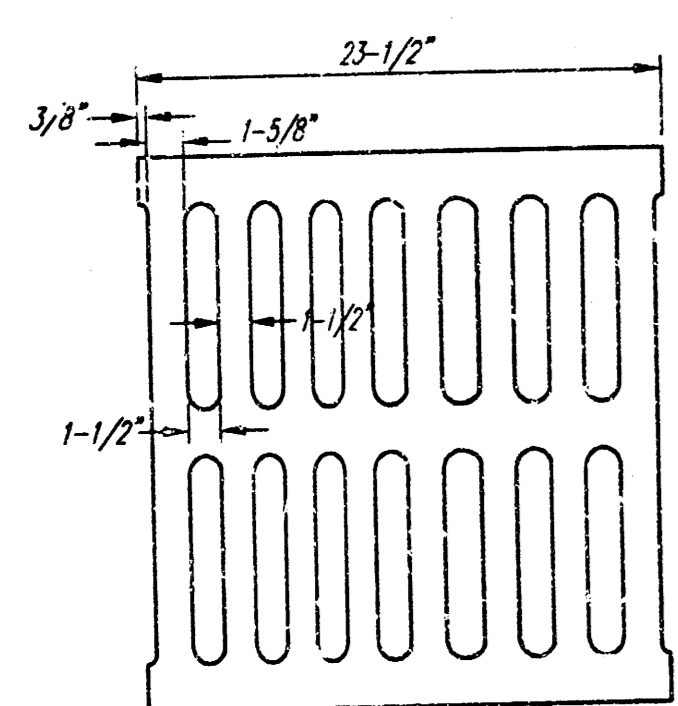
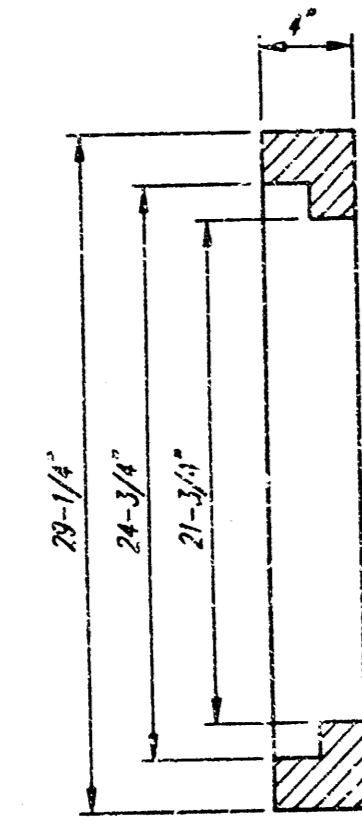
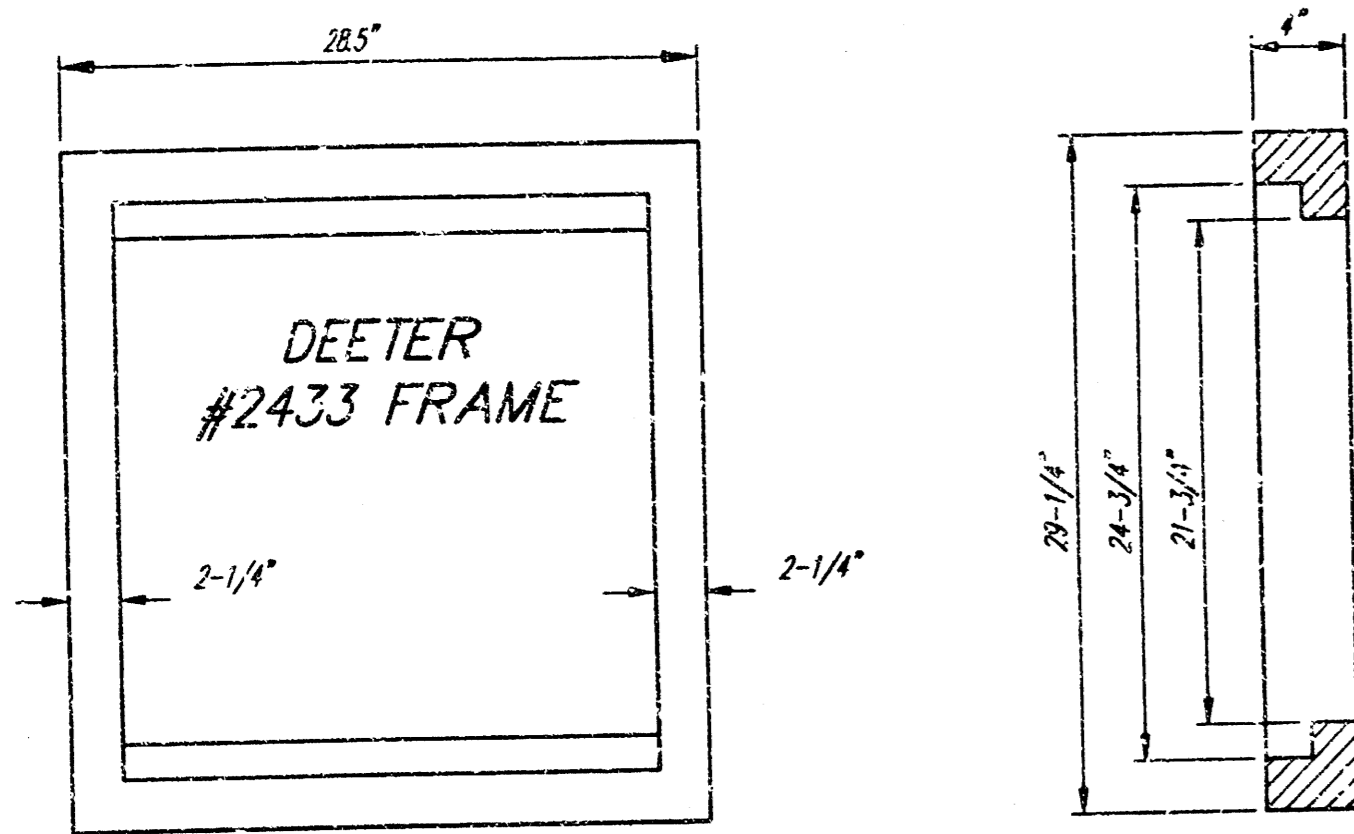
Storm Sewer To Serve
One Kellogg Place 2nd Addition
Lot 12

BAUGHMAN COMPANY P.A.
ENGINEERING, SURVEYING, & PLANNING
316-262-7271 • 215 ELLIS • WICHITA, KANSAS 67211

PROJECT NUMBER
1234 PPS (807881)

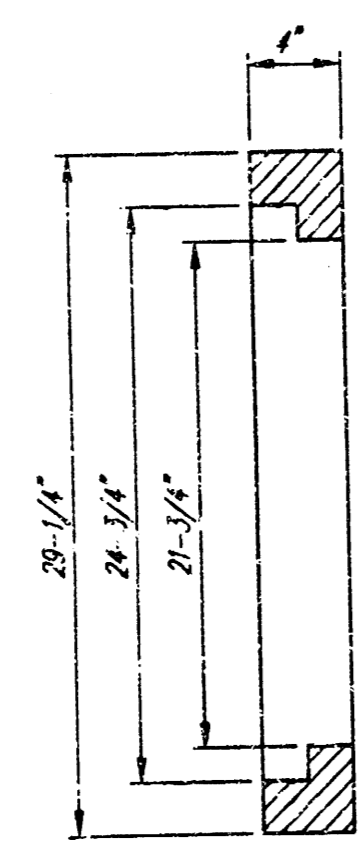
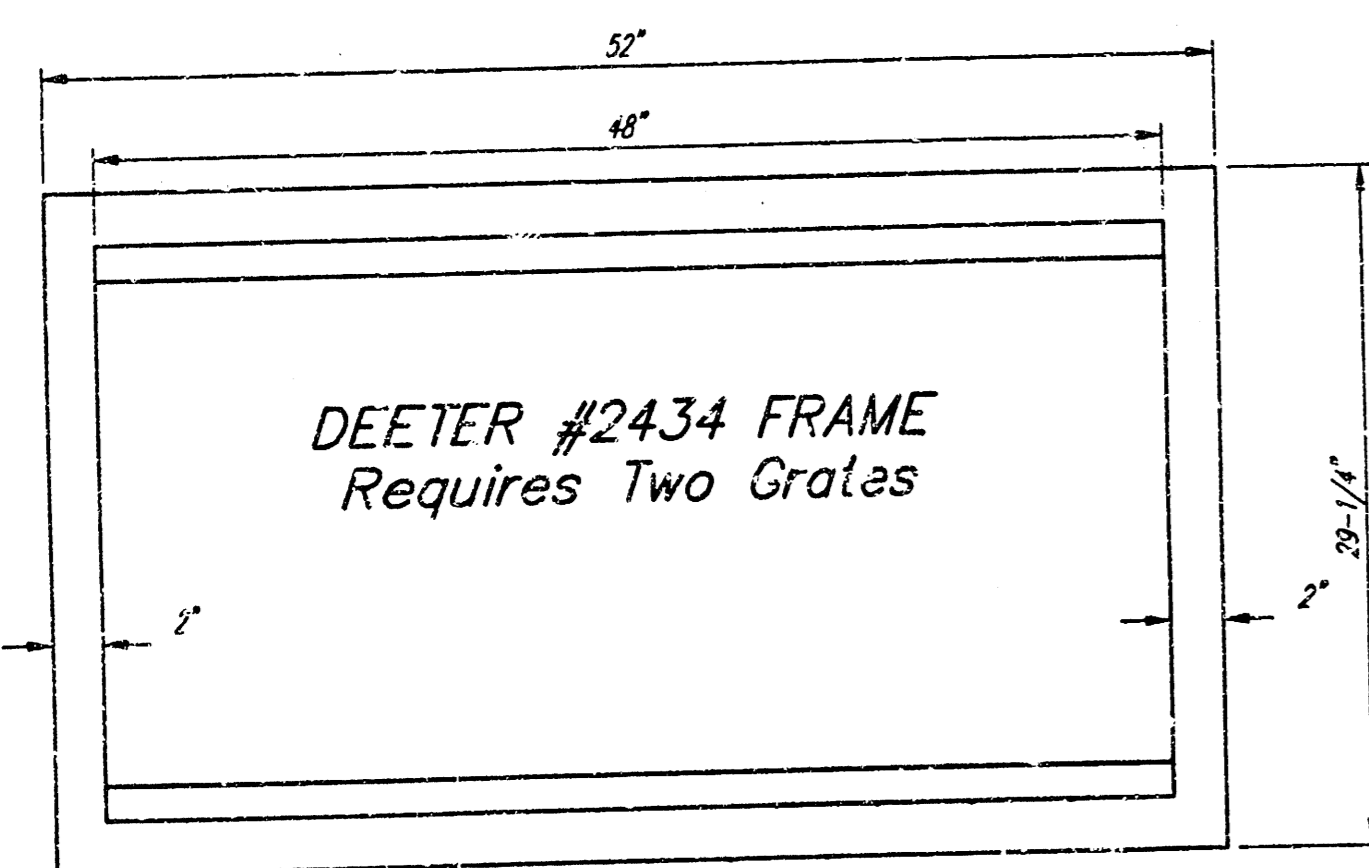
DESIGN LU	DRAWN LU	APPROVED	DATE 05/02	SCALE Noted	SHEET 3 OF 6
--------------	-------------	----------	---------------	----------------	-------------------------------------

12/13/02-2 01-12-108



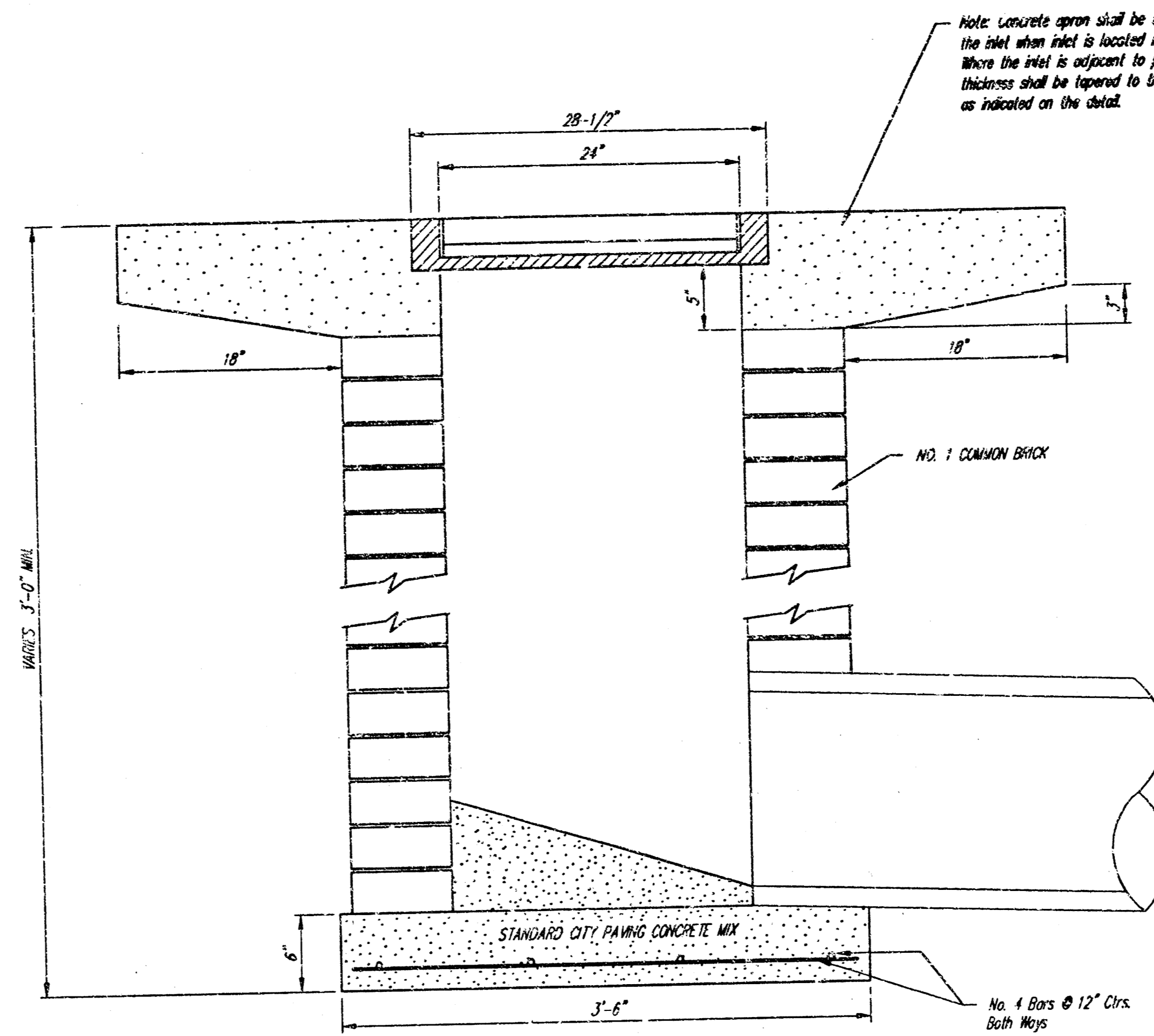
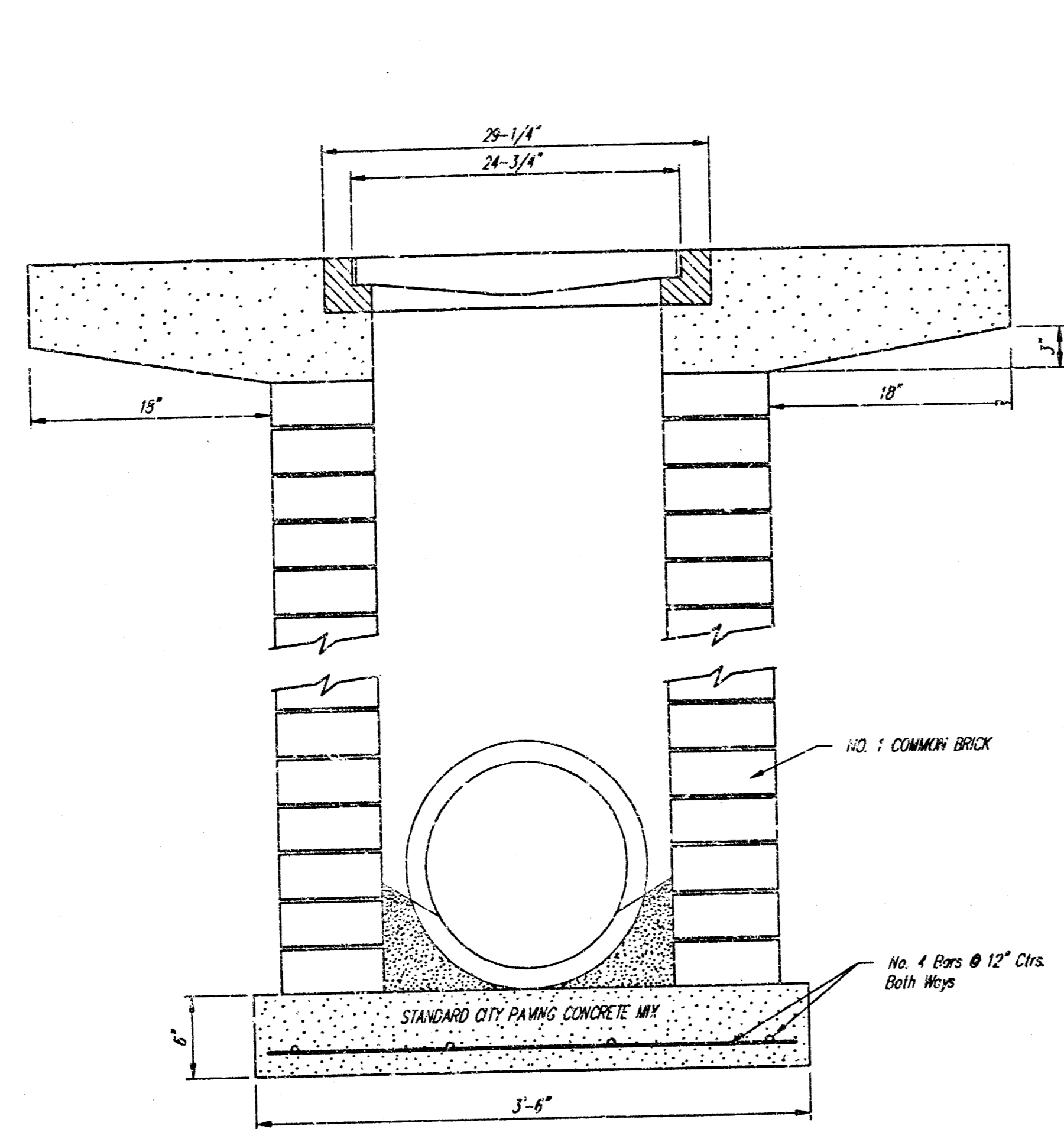
DEETER #2433 GRATE

24" x 24" Frame and Grate Detail

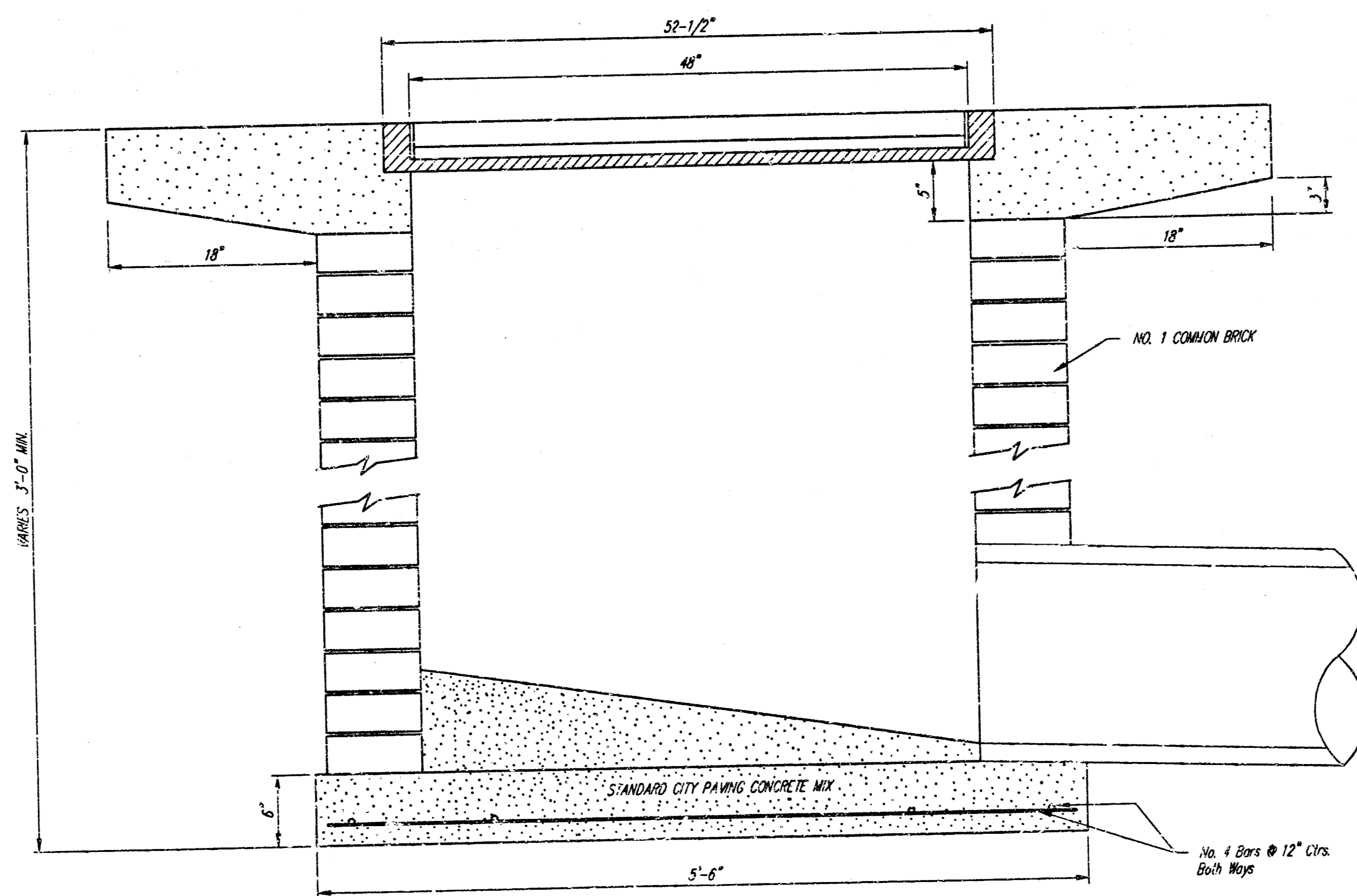


Double 24" x 24" Frame Detail

NOTE: Grates shall be imprinted on the top surface with "CITY OF WICHITA" using letters at least 1" in height. Other marking methods may be approved by the engineer.



Note: Concrete apron shall be constructed around the inlet when inlet is located in an unimproved area. Where the inlet is adjacent to pavement, the pavement thickness shall be tapered to the inlet in 18 inches as indicated on the detail.



NOTE:
Surface of grate must be clean and free of dirt and debris.
Position Verti-Pro squarely on the inlet grate.
Install loggie ball assembly (See Figure 2). The ball clear space must contact both the lower frame flange and grate. The loggie ball must engage two bars on grate. Repeat on opposite sides.
The Verti-Pro has four (4) legs that unfold just like a card table (See Figure 3). Rotate legs to upright position on diagonal corners. This will support the upper framework on the Verti-Pro.
Align holes in each leg with the two (2) holes in upper frame. Insert a plastic resistor (or equal) in each of the holes from the outside in.

MAINTENANCE:
Inspect after each rain event. Remove debris and captured sediment when deposits reach 2" or 1/2 the height of the Verti-Pro. Remove captured debris from the filter fabric with a stiff bristle brush (frames are reusable and easy to install).

ORDERING:
ALPINE STORMWATER MANAGEMENT COMPANY
4127 Brookings, Suite B
Grove City, Ohio 43123
Phone: 602-539-8040, Dan Stover, Sr., President

DROP INLET PROTECTION - The "Verti-Pro" by Alpina®
For Yard and Parking Lot Inlet Usage

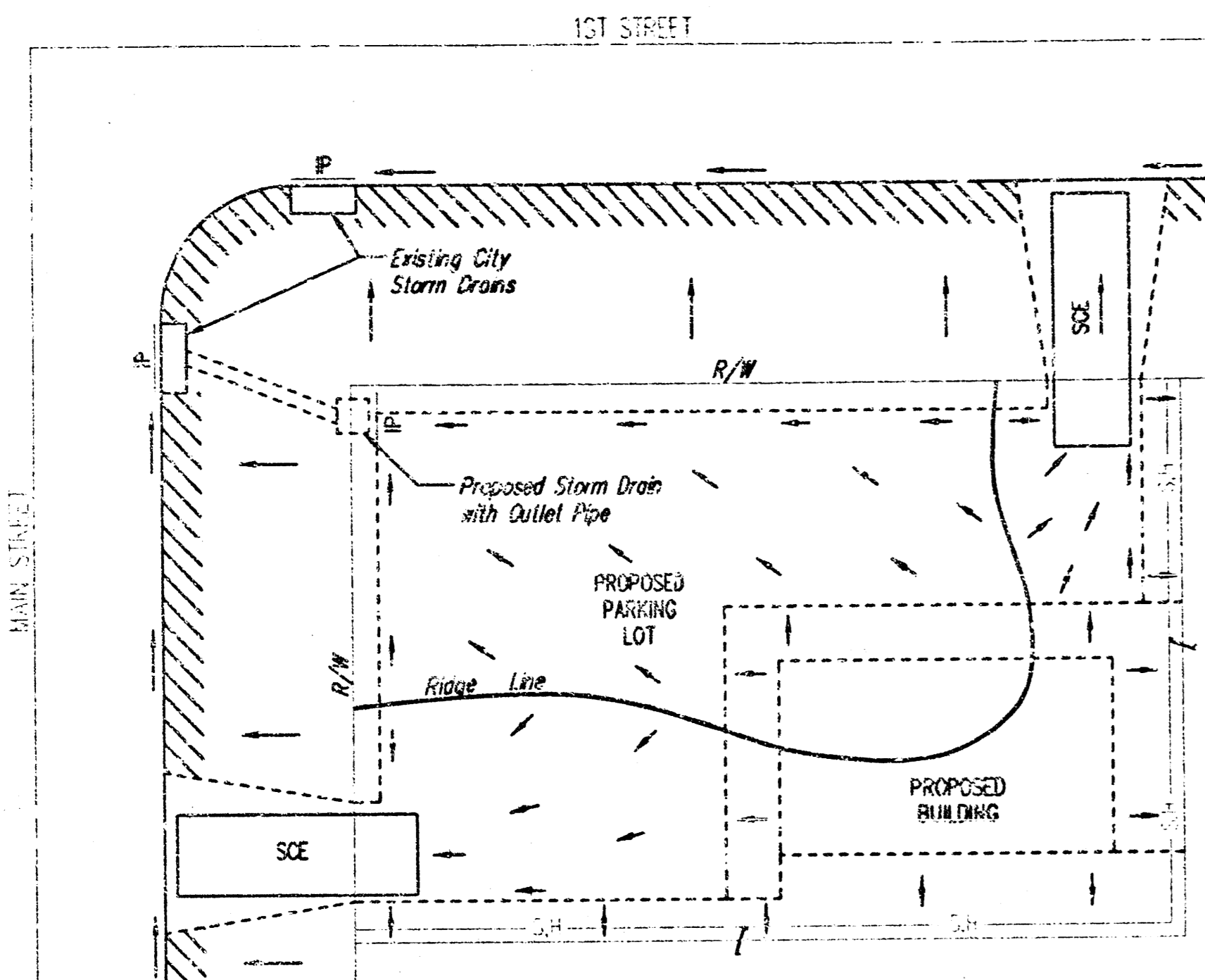
CITY OF WICHITA
STANDARD DROP INLET

BAUGHMAN COMPANY P.A.
ENGINEERING, SURVEYING, & PLANNING
319-262-1221 • 315 ELLIC • WICHITA, KANSAS 67201

PROJECT NUMBER
1234 PPS (607881)

DESIGN STAFF DRAWN STAFF APPROVED DATE 05/02 SCALE NONE

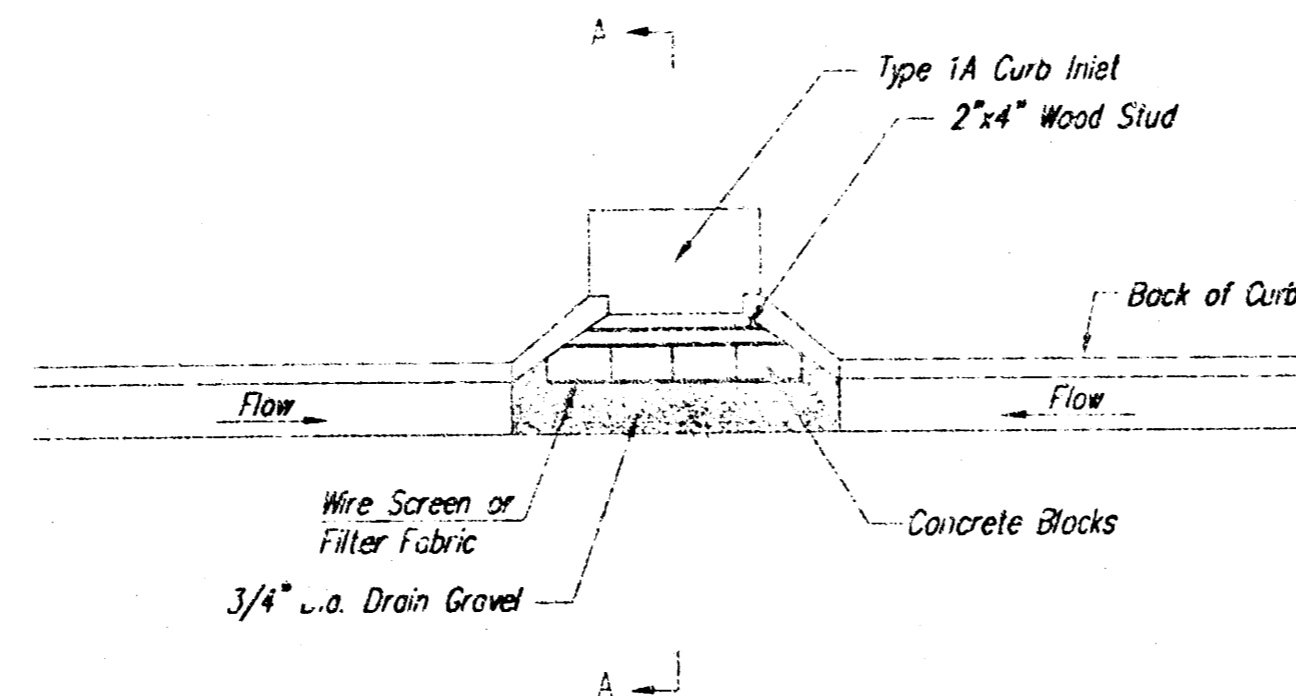
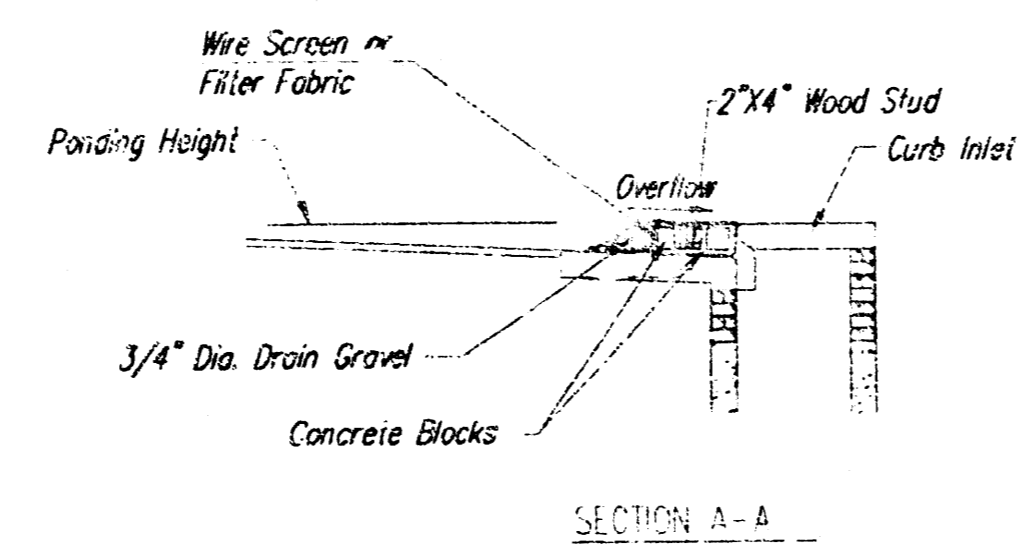
SHEET **4** OF **6**



- LEGEND**
- Flow Direction
 - IP Inlet Protection - to be provided at all inlets subject to silt laden runoff.
 - S-F- Silt Fence or Hay Bale Barrier - to be installed along property lines where runoff from construction site can run onto other properties.
 - SCE Stabilized Construction Entrance - to be used at all locations where vehicles or equipment enter or exit property.
 - Back of Curb Protection - to be installed whenever curb is backfilled to less than 3 inches from top and disturbed earth is adjacent thereto. (See City Standard Details.)

General Notes

1. This standard detail sheet is a part of your building permit. The BMP's shown on this sheet are considered minimum standards. Whenever sediment enters the streets, storm sewers, ditches, or ponds, contractor will install additional BMP's, as needed, to correct the problem.
2. Follow these general principles on all commercial building sides.
3. The soil erosion BMP's shown herein must be in place at all times during construction until such time as the site is re-established with paving or grass.
4. Failure to install, protect, and maintain BMP's are violations of Section 16.32 of the City Code and will subject the contractor to the penalties provided therein. Included with your permit is a orange "notice" sign that must be posted on-site in a conspicuous place at all times during construction. This sign is provided to assist you in the maintenance of BMP's.
5. Back of Curb Protection: Can include hay bales, silt fence, or Curbex barriers, as shown on City BMP standard details. This BMP must remain in place until the area between the curb and right-of-way line has been permanently stabilized.
6. The General Contractor is responsible for the installation and maintenance of all BMP's.
7. Should the site abut a lake, BMP's will be installed to prevent sediment from entering the lake.
8. Any mud inadvertently tracked onto any street will be cleaned up by the general contractor at the end of each day's work.



CURB INLET GRAVEL FILTERS
(INLET PROTECTION-RESIDENTIAL STREETS ONLY)
NOTE: Other types of curb inlet protection may be approved by the city so long as equal protection is provided.

A gravel inlet filter shall be installed at sump locations on residential streets. This type of protection is not to be used on arterial or collector streets at any time that it would pose an undue traffic hazard.

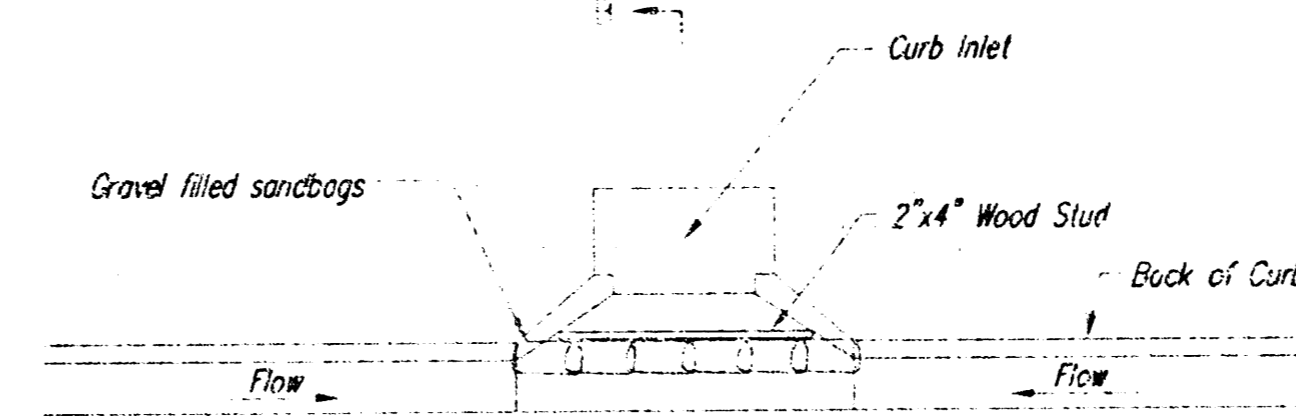
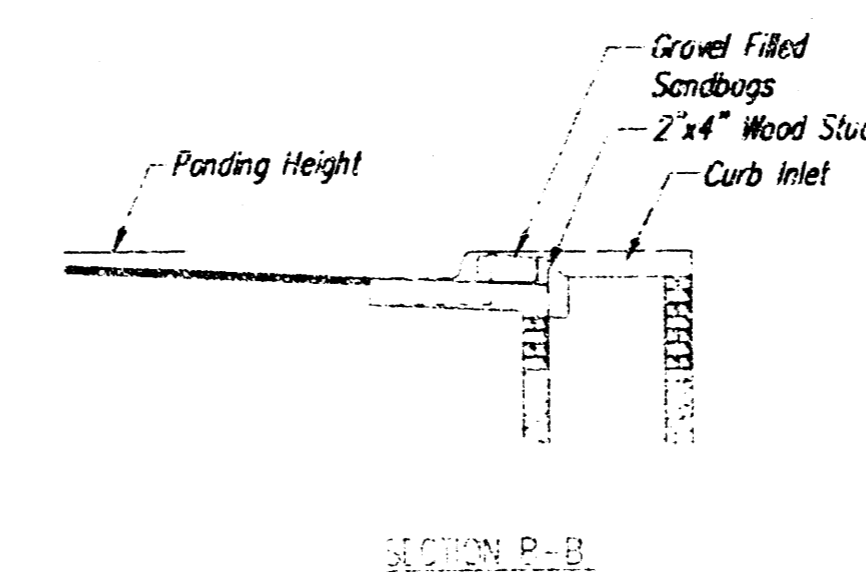
Instructions for Installing:

- STEP 1: Place concrete blocks around the inlet as shown on drawing. Insert 2x4 board as shown.
- STEP 2: Wrap 1/2" mesh wire screen around the concrete blocks.
- STEP 3: Place 1" to 1-1/2" diameter rock around the blocks and wire screen. Be sure the rock extends down from the top of the concrete block.
- STEP 4: To prevent damage to vehicles, signs warning drivers about the structures may be necessary. An alternative installation is the use of gravel bags supported by a 2"x4" board to prevent collapsing.

Use of rock with diameters smaller than 1" in the bag may result in clogging of pores and reduce the amount of water flowing into an inlet.

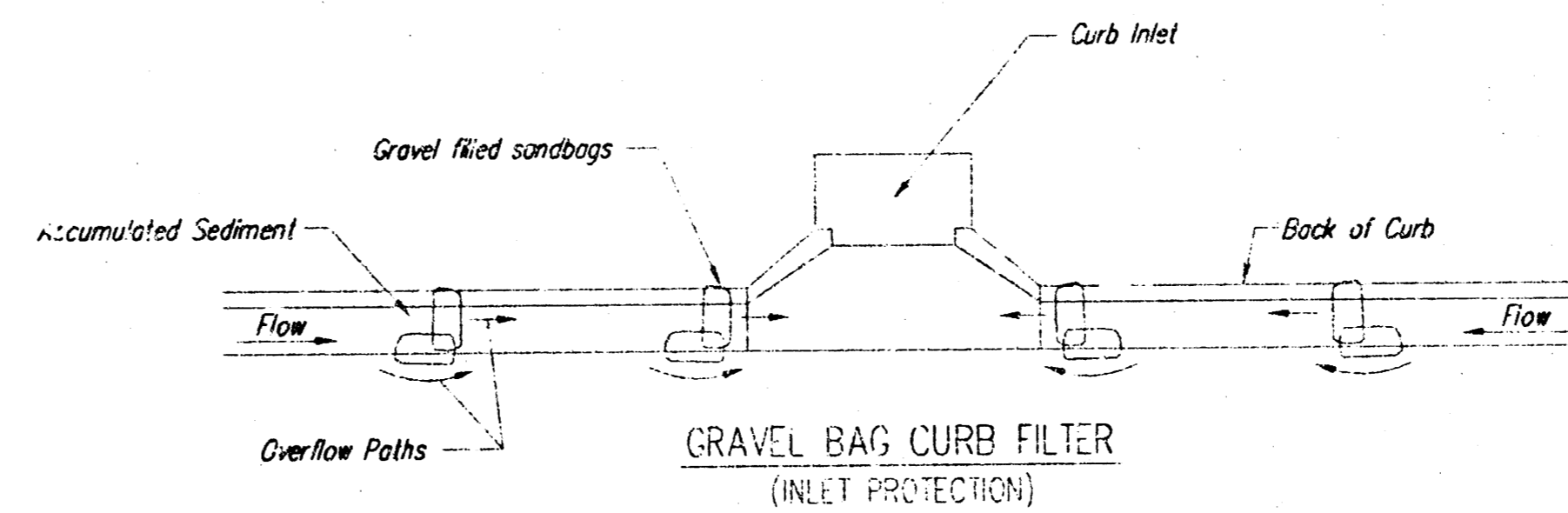
Maintenance:

All curb inlet gravel filters shall be inspected and repaired after each runoff event. Sediment deposits are to be removed once material is within 8 cm (3 inches) of the top of any block. Periodically, the gravel shall be raked to increase infiltration and filtering of runoff waters. Accumulated sediment is to be removed immediately from roads and streets.



CURB INLET SANDBAG FILTERS
(INLET PROTECTION)
NOTE: Other types of curb inlet protection may be approved by the City so long as equal protection is provided.

NOTE: Other types of curb inlet protection may be approved by the City so long as equal protection is provided.



GRAVEL BAG CURB FILTER
(INLET PROTECTION)
NOTE: Place two or more sets of bags in a manner that results in maximum support. The flow line bag must be lower than top of curb.

CURB SEDIMENT TRAPS

When inlets are located on streets having a grade (i.e., sump conditions do not exist), installing gravel (or sand) bags in the gutter flow line to create small sediment traps can be considered. Gravel bags are recommended over sand bags to allow for drainage.

If the spacing between bags becomes too large, little sediment may be trapped. Spacing of bags should be completed using the table or graph that illustrates placement distances based upon street slope. When installed in the gutter, bag tops must be lower than the sidewalk.

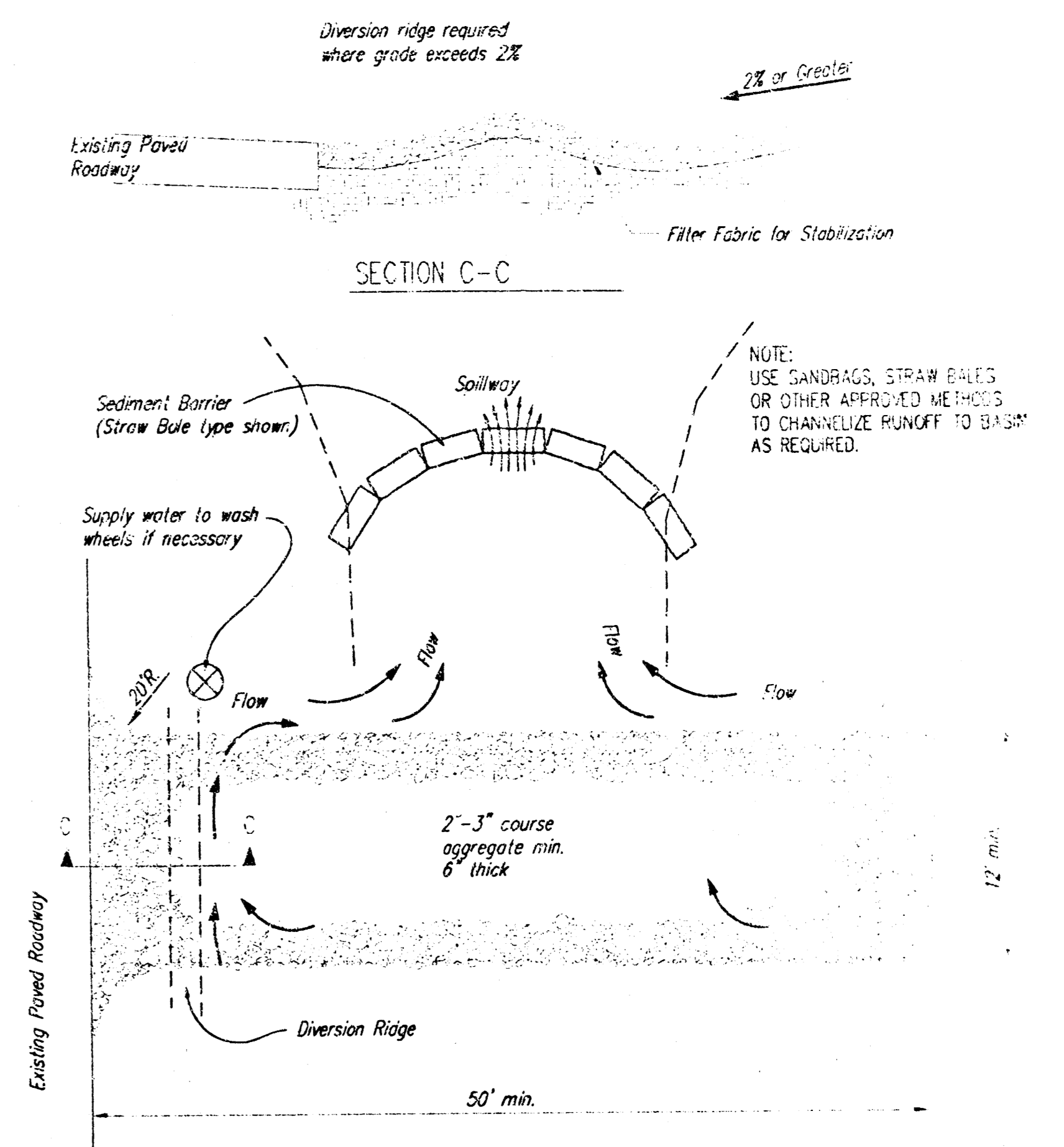
Sizing:

Gravel bags are to be placed according to street grades using the following table or graph that appears below.

GRADE (%)	SPACING (FEET)
0.5	75
1.0	45
2.0	18
3.0	12
4.0	9
5.0	6

Maintenance:

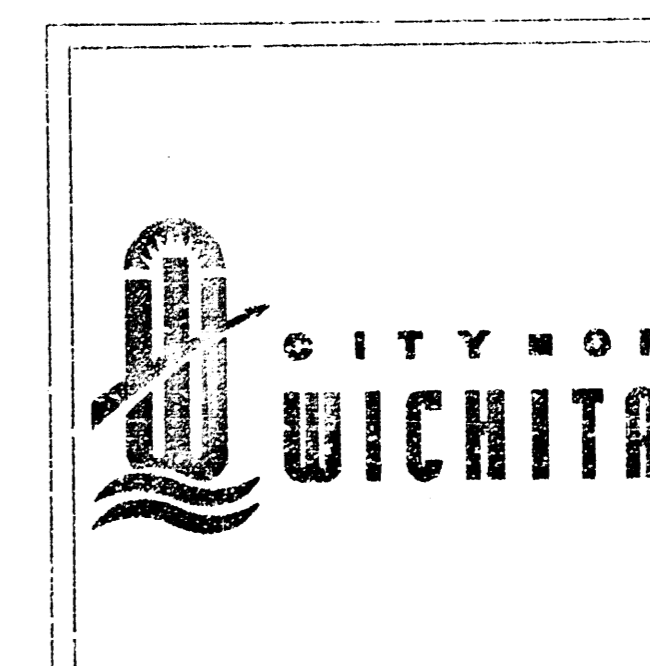
Collected sediment shall be removed after every runoff event. Bags that are destroyed by vehicular traffic or through natural deterioration are to be immediately replaced.



STABILIZED CONSTRUCTION ENTRANCE

NOTES:

1. THE ENTRANCE SHALL BE MAINTAINED IN A CONDITION THAT WILL PREVENT TRACKING OR FLOWING OF SEDIMENT ONTO PUBLIC RIGHTS-OF-WAY. THIS MAY REQUIRE TOP DRESSING, REPAIR AND/OR CLEANOUT OF ANY MEASURES USED TO TRAP SEDIMENT.
2. WHEN NECESSARY, WHEELS SHALL BE CLEANED PRIOR TO ENTRANCE ONTO PUBLIC RIGHT-OF-WAY.
3. WHEN WASHING IS REQUIRED, IT SHALL BE DONE ON AN AREA STABILIZED WITH CRUSHED STONE THAT DRAINS INTO AN APPROVED SEDIMENT TRAP OR SEDIMENT BASIN, AS SHOWN ABOVE.
4. DRIVE ENTRANCES ONTO RESIDENTIAL LOTS WILL NOT BE REQUIRED TO HAVE THE SEDIMENT BARRIER SHOWN, BUT WHEEL WASHING MAY BE REQUIRED IF STABILIZED ENTRANCE IS NOT SUFFICIENT TO KEEP MUD FROM BEING TRACKED ONTO ADJACENT STREET. ENTRANCE SHALL EXTEND FROM BACK OF CURB TO DWELLING.



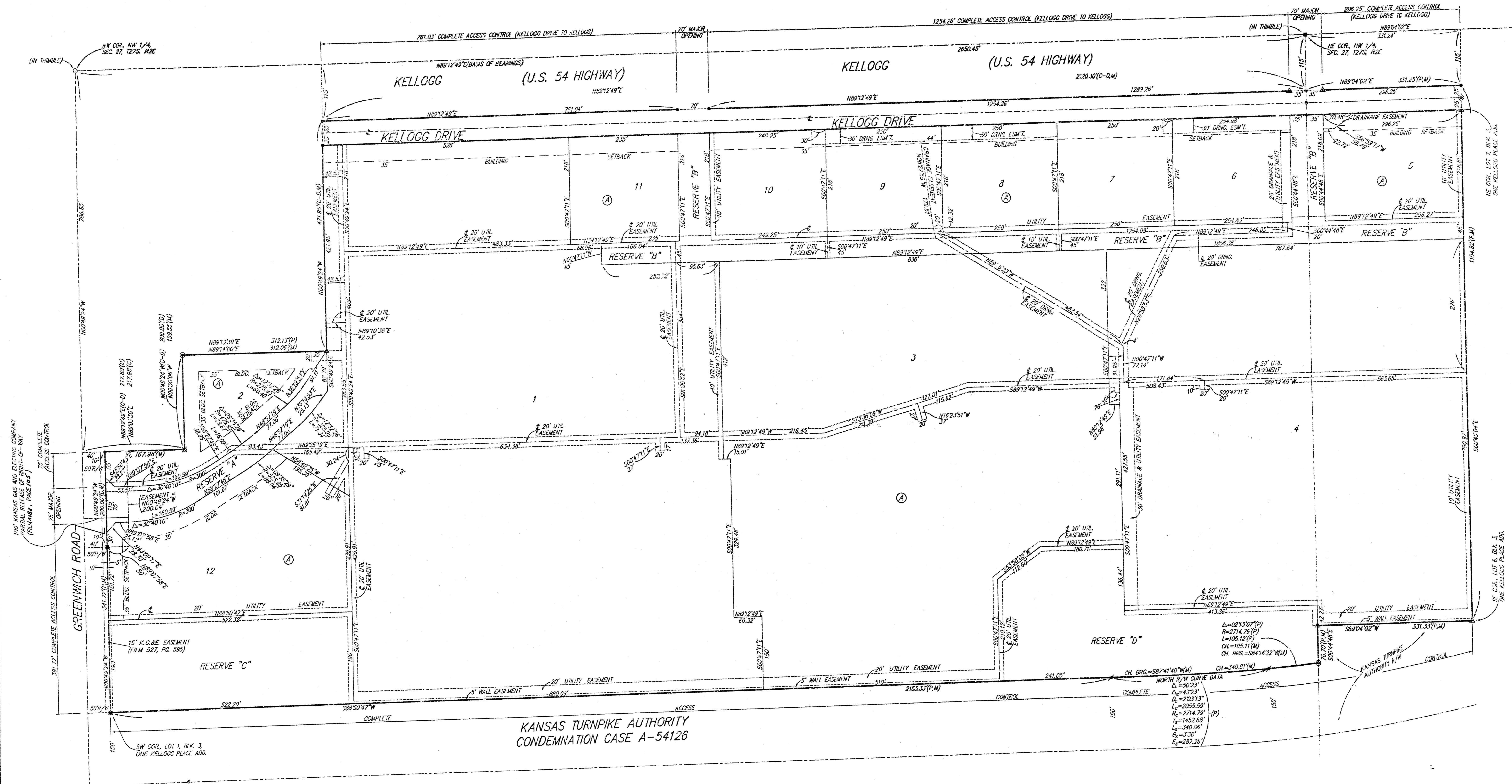
**SOIL EROSION
BMP DETAILS**

CHRISTOPHER M. CARRIER, P.E.
STORM WATER ENGINEER

PROJECT NUMBER 1234 FPS (607861)	DATE 05/02	SHEET 5 OF 6
-------------------------------------	---------------	--------------

ONE KELLOGG PLACE 2ND ADDITION

WICHITA, SEDGWICK COUNTY, KANSAS



KANSAS TURNPIKE AUTHORITY
CONDEMNATION CASE A-54125

- = #4 REBAR W/ "BAUGHMAN" CAP (FND)
- ⊙ = 3/4" IRON (FOUND)
- = #4 REBAR (FOUND)
- ⊕ = #6 REBAR (FOUND)
- ⊖ = #5 REBAR (FOUND)
- ⊗ = #5 REBAR W/ "GOEDERICH" CAP (FOUND)
- ⊘ = #4 REBAR W/ "BAUGHMAN" CAP (FOUND)
- ⊙ = 1" IRON (FOUND)

- (M) = MEASURED
- (P) = PLATED
- (D) = DESCRIBED
- (C) = CALCULATED
- (C-D) = CALCULATED PER

NOTE:
A DRAINAGE PLAN HAS BEEN DEVELOPED FOR THIS SUBDIVISION AND IS ON FILE WITH THE CITY OF WICHITA, KANSAS. DRAINAGE INTENT SHALL REMAIN AS DERIVED OR AS MODIFIED WITH THE APPROVAL OF THE CITY ENGINEER OF THE CITY OF WICHITA, KANSAS. NO OBSTRUCTIONS WHICH IMPERE THE FLOW OF THIS DRAINAGE PLAN SHALL BE ALLOWED.

MINIMUM BUILDING PAD ELEVATIONS FOR LOWEST OPENING TO THE STRUCTURES		ELEVATION
LOT	BLOCK	CITY DATUM
1	A	173.0
3	A	173.0
4	A	173.0
12	A	168.0

BENCHMARK:
CITY OF WICHITA BENCHMARK - SE CORNER OF INTERSECTION OF GREENWICH AND KELLOGG NW CORNER OF LIGHT POLE BASE 48.70' N. OF & OF S.S. MANHOLE 48.70' S. OF & OF TRAFFIC SIGNAL MANHOLE IN KELLOGG MEDIAN 70.50' E. OF BACK OF E. CURB ON E. SIDE OF

