

GENERAL NOTES

1. THE TOPS OF INLETS AND MANHOLES AS NOTED ON THE PLANS MAY VARY SO AS TO MEET PROPOSED TOP OF CURB ELEVATIONS OR PAVEMENT ELEVATIONS. THE FIELD ENGINEER SHALL LOCATE INLETS AND MANHOLES WITH REFERENCE TO PROPOSED PAVING PLANS OF THE PERTINENT STREETS.
2. ALL CONCRETE SHALL BE STANDARD PAVING MIX UNLESS OTHERWISE NOTED.
3. THE CONTRACTOR SHALL BE RESPONSIBLE FOR PRESERVING PROPERTY IRONS. THE CONTRACTOR SHALL BE REQUIRED TO RE-ESTABLISH ANY PROPERTY IRONS WHICH ARE DAMAGED OR DESTROYED BY HIS CONSTRUCTION OPERATIONS. SUCH IRONS SHALL BE RE-ESTABLISHED BY A LICENSED LAND SURVEYOR IN ACCORDANCE WITH STATE LAWS.
4. TREES TO BE REMOVED ARE MARKED X. ALL TREES WHICH IN THE OPINION OF THE FIELD ENGINEER CAN BE SAVED, SHALL BE SAVED.
5. CONTRACTOR SHALL NOTIFY UTILITY COMPANIES OF CONSTRUCTION SCHEDULING.
6. EXISTING UTILITIES AND THEIR LOCATIONS, AS SHOWN ON THE PLANS REPRESENT THE BEST INFORMATION OBTAINABLE FOR DESIGN. LOCATION INFORMATION HAS BEEN OBTAINED FROM THE VARIOUS COMPANIES AND IS EITHER FROM COMPANY UTILITY DRAWINGS OR COMPANY PROVIDED FIELD LOCATIONS. THE PLAN LOCATIONS SHOWN ARE NOT GUARANTEED. ADDITIONAL EXISTING UTILITIES MAY ALSO BE ENCOUNTERED.
7. CONTRACTOR WILL BE REQUIRED TO PROVIDE A MINIMUM ADVANCE NOTICE OF FORTY-EIGHT (48) HOURS TO UTILITY COMPANIES TO STARTING ANY EXCAVATION AS FOLLOWS:

KANSAS ONE-CALL	687-2470
	OR 687-2470 (LOCAL WICHITA)

THE CONTRACTOR MUST NOTIFY THE FOLLOWING IN CASE OF EMERGENCY:

CABLEVISION	263-2081
KOGE (GAS & ELECTRIC)	383-8900
SOUTHWESTERN BELL TELEPHONE COMPANY	1-800-734-7990
CITY OF WICHITA WATER & SEWER MAINT.	262-6000
ARKLA GAS COMPANY	946-0096
8. RUBBLE FROM THE REMOVAL OF MISCELLANEOUS STRUCTURES AND EXCESS EXCAVATION WHICH IS TO BE WASTED SHALL BE DISPOSED ON SITES TO BE PROVIDED BY THE CONTRACTOR. THESE SITES SHALL BE APPROVED BY THE ENGINEER AS TO SUITABILITY, APPEARANCE AND SITE LOCATION. LOCATIONS THAT, IN THE OPINION OF THE ENGINEER, WILL LEAVE AN UNSIGHTLY APPEARANCE WILL NOT BE APPROVED. ALL DISPOSAL SITES MUST BE APPROVED BY THE KANSAS DEPARTMENT OF HEALTH AND ENVIRONMENT. MATERIAL EITHER STOCKPILED OR DISPOSED OF IN A FLOOD PLAIN WOULD REQUIRE A KANSAS STATE BOARD OF AGRICULTURE PERMIT. ANY MATERIAL DUMPED IN WATERS OF THE UNITED STATES OR WETLANDS IS SUBJECT TO U.S. CORPS OF ENGINEERS PERMITTING REGULATIONS. ANY MATERIAL BURIED OR STOCKPILED BEYOND APPROVED CONSTRUCTION LIMITS WOULD REQUIRE ADDITIONAL ARCHAEOLOGICAL INVESTIGATIONS UNLESS BURIED IN A PREVIOUSLY APPROVED BORROW LOCATION.
9. CONTRACTOR SHALL RESEED AND MULCH ALL DISTURBED AREAS. COST SHALL BE CONSIDERED SUBSIDIARY TO SITE RESTORATION.

APPROVED AS NOTED
BY CITY ENGINEER OF WICHITA

STORM SEWERS: URH 5/15/02

NOTE TO CONTRACTOR

INSPECTION AND TESTING FOR THIS PROJECT IS TO BE PROVIDED BY A LICENSED CONSULTING ENGINEERING FIRM UNDER CONTRACT WITH THE OWNER/DEVELOPER. SAID INSPECTION TO BE IN ACCORDANCE WITH THE CITY OF WICHITA STANDARD CONSTRUCTION ENGINEERING PRACTICES AND QUALIFIED BY A LICENSED PROFESSIONAL ENGINEER. NO WORK SHALL BE PERFORMED IN DEDICATED EASEMENTS OR THE PUBLIC RIGHT-OF-WAY BY THE CONTRACTOR WITHOUT SUCH INSPECTION NOR SHALL ANY WORK BE COMMENCED IN DEDICATED EASEMENTS OR PUBLIC RIGHT-OF-WAY WITHOUT WRITTEN AUTHORIZATION BY THE CITY ENGINEER.

PRIVATE STORM WATER SEWER PLANS FOR

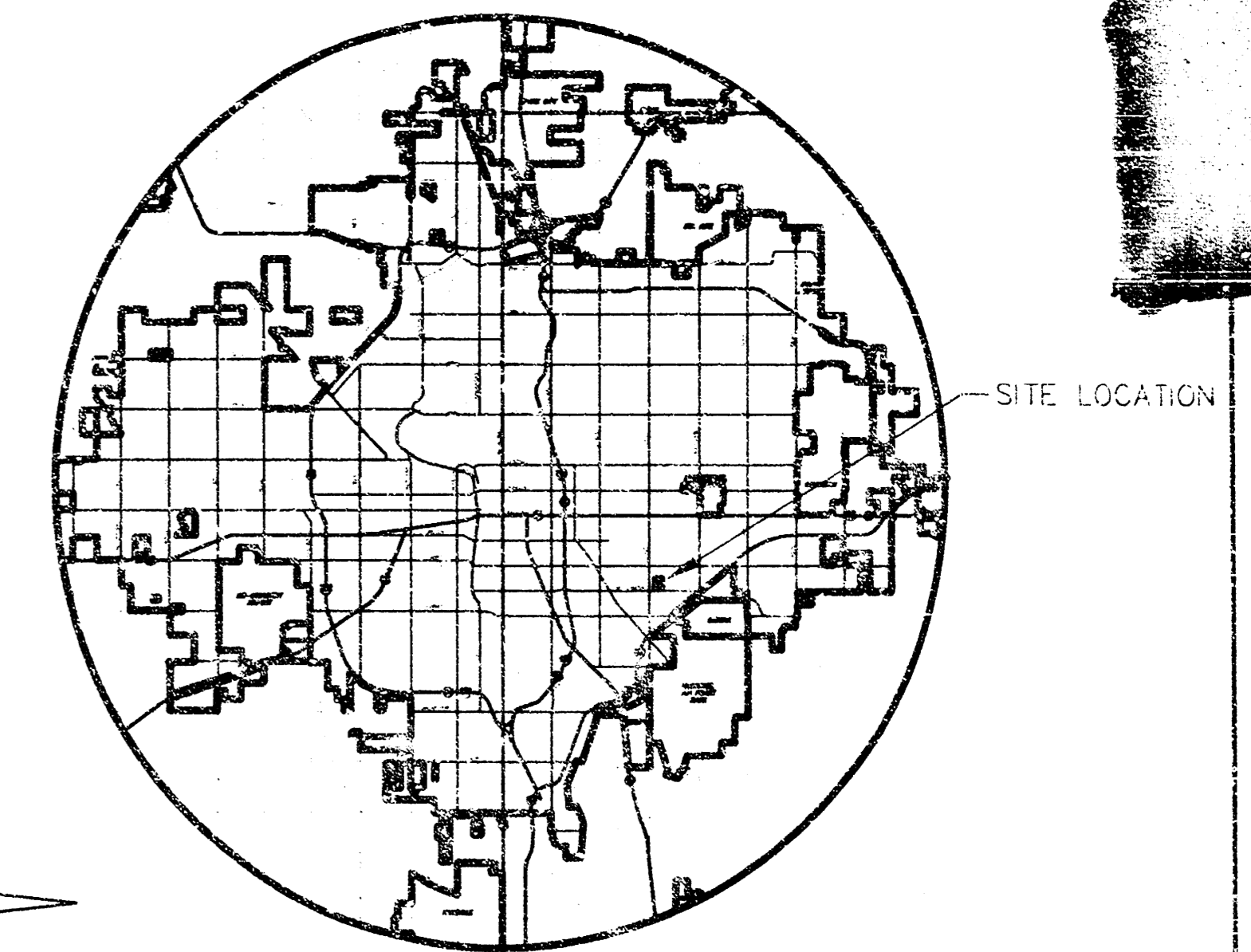
ALLEN ELEMENTARY SCHOOL

IN THE CITY OF WICHITA
SEDGWICK COUNTY, KANSAS

PROJECT NO. 1240 PPS

MICHAEL E. LINDESAK, CITY ENGINEER

OCA NO. 607861



SCALE: 1" = 100'

LOCATION MAP

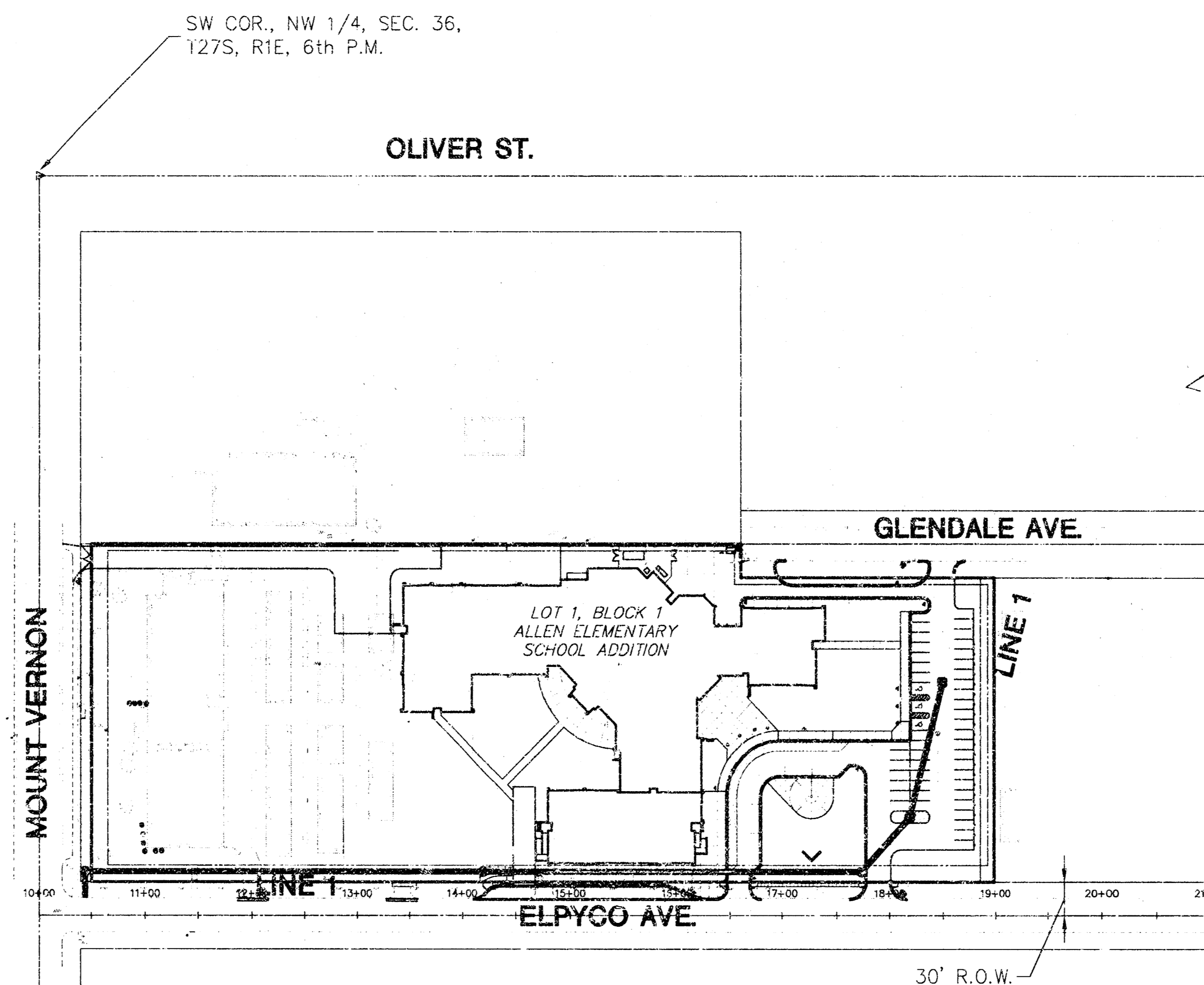
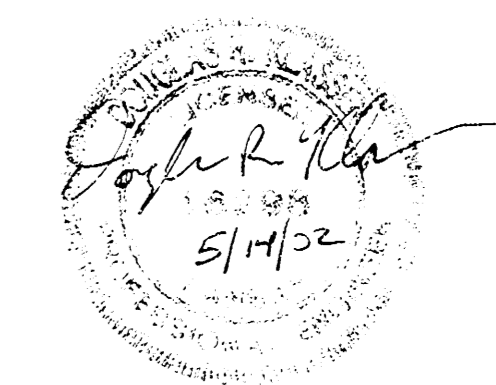
INDEX TO DRAWINGS

SHEET NO.	DESCRIPTION
1	TITLE SHEET
2-3	DETAILS
4-5	LINE 1

COMBINE WITH OTHER 1240

BENCHMARKS

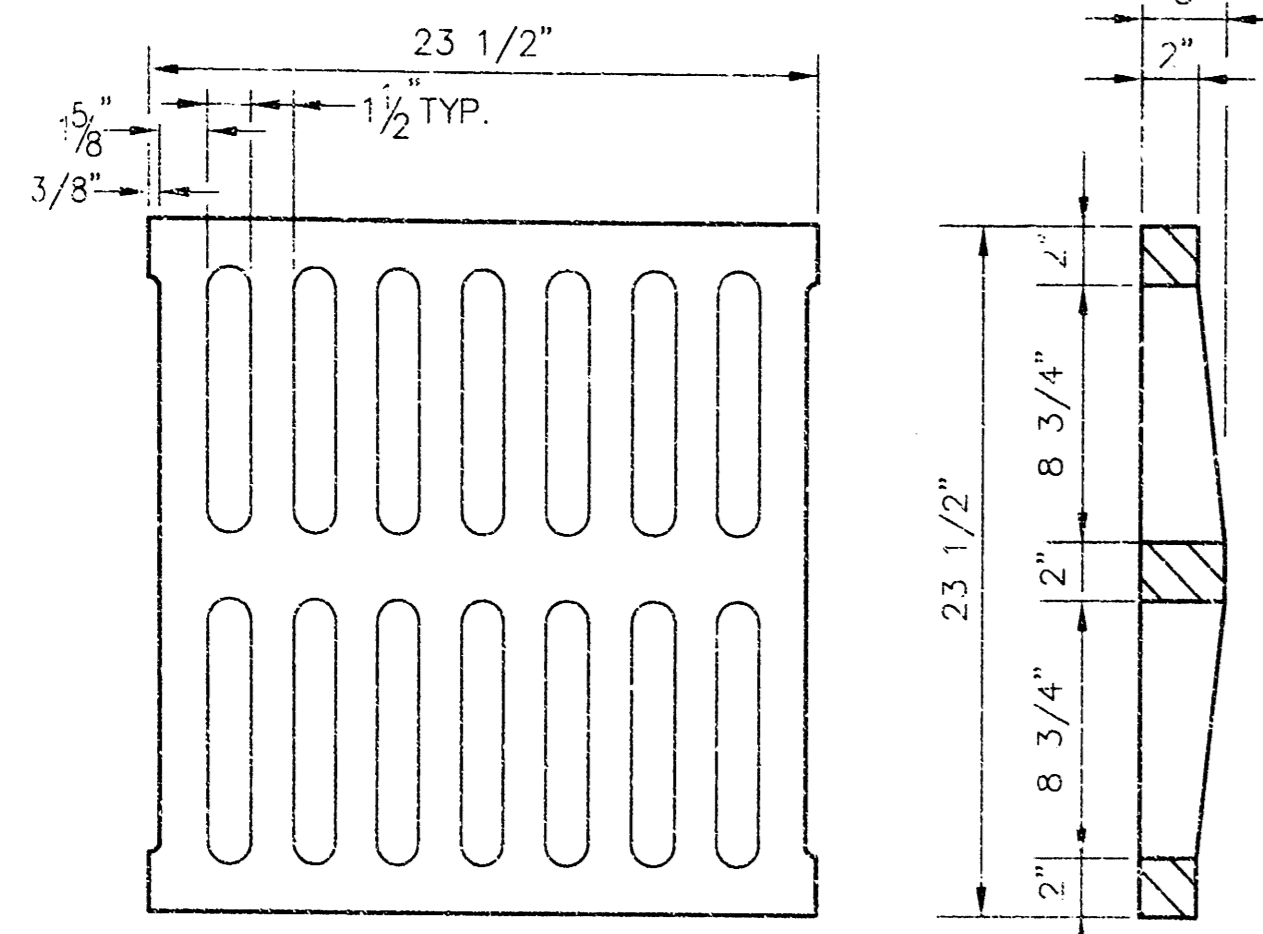
- BM#1 C.O.W. benchmark top of brass tap at NE. corner of Mount Vernon and Oliver Street. Elevation = 148.60' (city datum)
- BM#2 Top of North curb return at NE. corner of Elpyco Ave. and Mt. Vernon. Elevation = 141.33 (city datum)



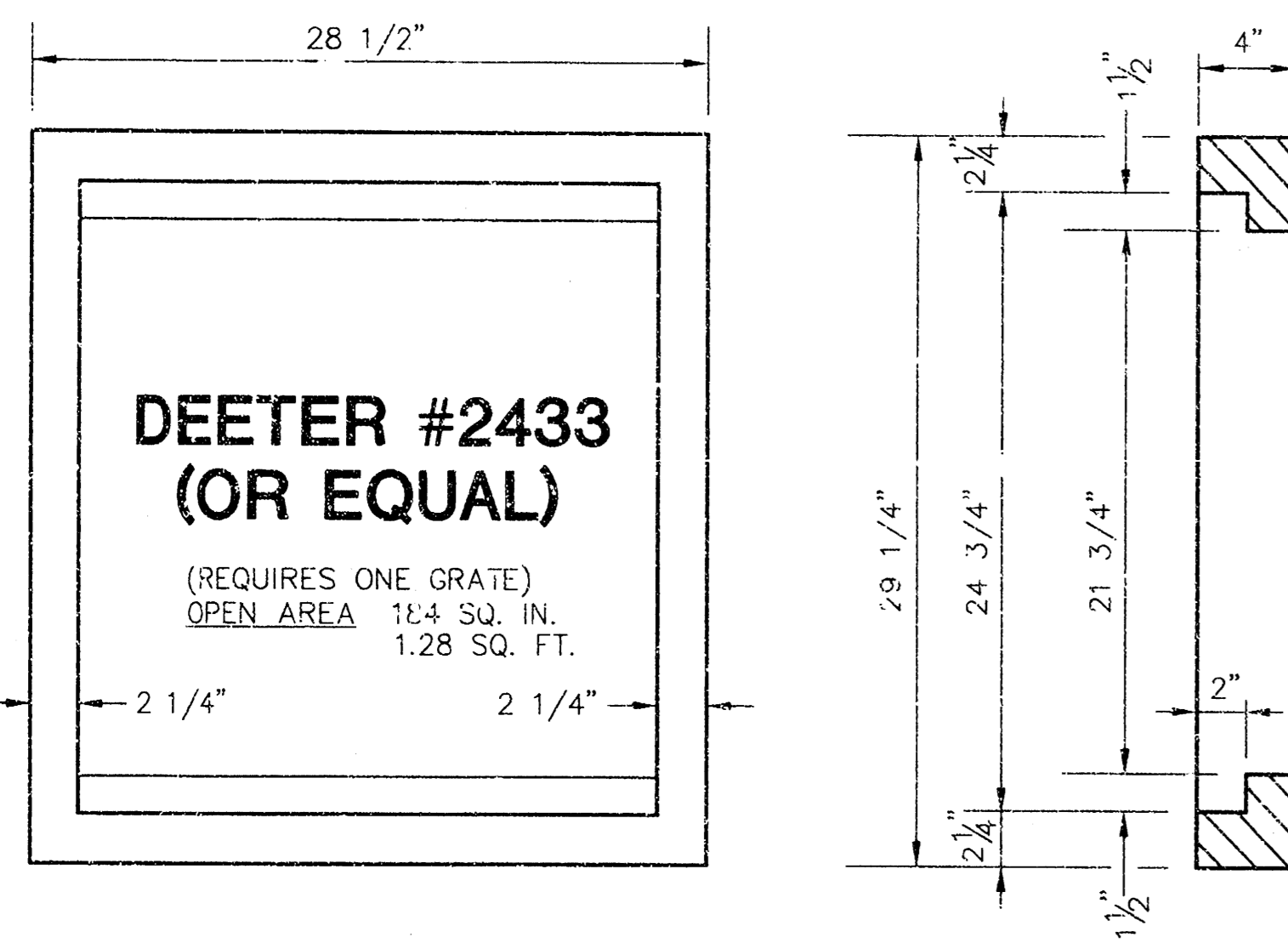
<p>MKEC ENGINEERING CONSULTANTS 411 N. WEBB ROAD WICHITA, KS. 67206 316-684-9600</p>	<p>ALLEN ELEMENTARY SCHOOL PROJECT NAME</p>		
	<p>STORM WATER SEWER TITLE SHEET SHEET TITLE</p>		
	<p>DK DESIGN BY:</p>	<p>GJR DRAWN BY:</p>	<p>DK CHECKED BY:</p>
	<p>MAY 2002 DATE</p>	<p>TITLE DRAWING NAME</p>	<p>1 / 5 SHEET / OF</p>

10 MAY 14 13:05:47 20 2

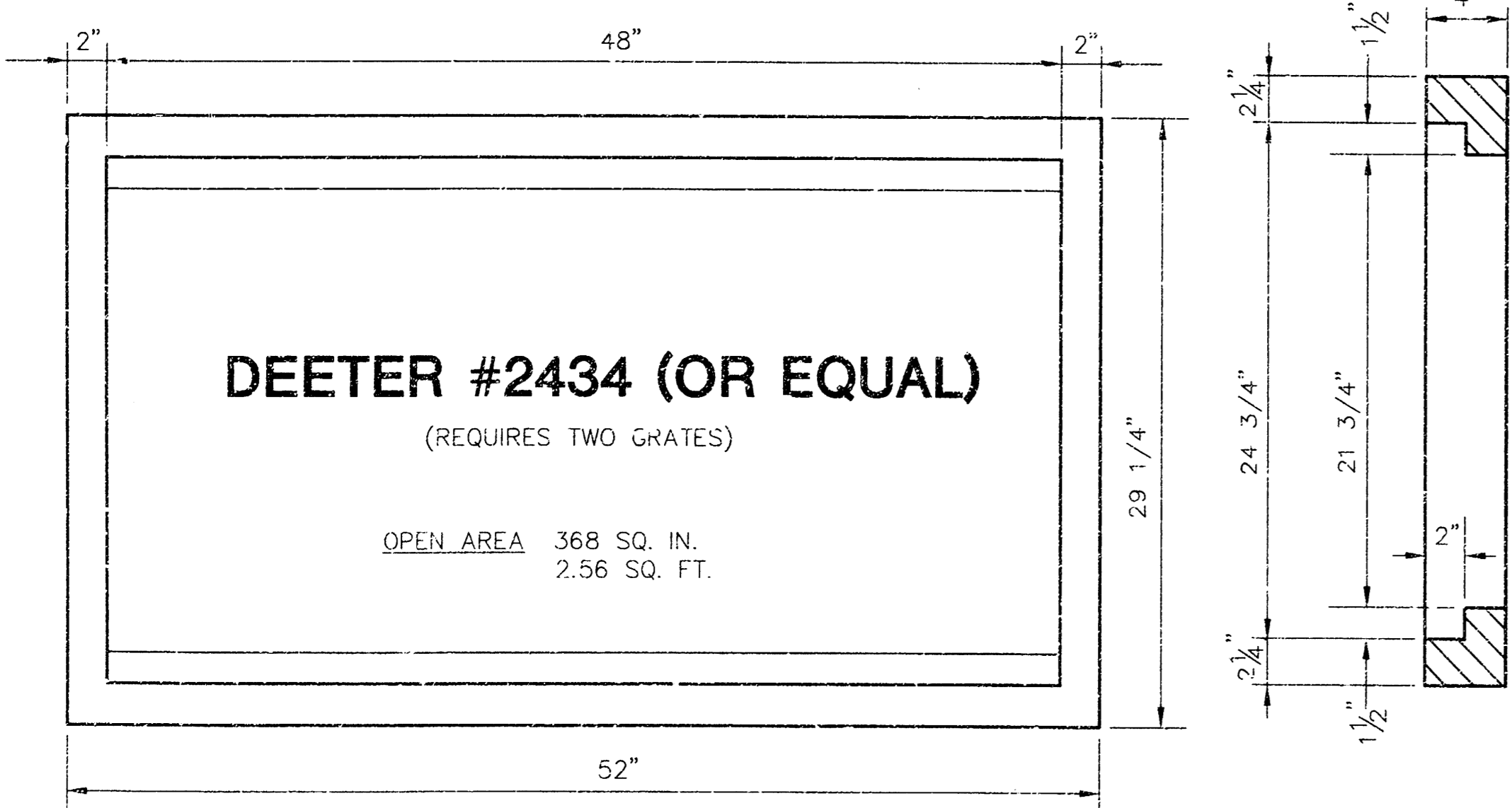
NOTE: GRATES SHALL BE IMPRINTED ON THE TOP SURFACE WITH "CITY OF WICHITA" USING LETTERS AT LEAST 1" IN HEIGHT. OTHER MARKING METHODS MAY BE USED ONLY IF APPROVED BY THE ENGINEER.



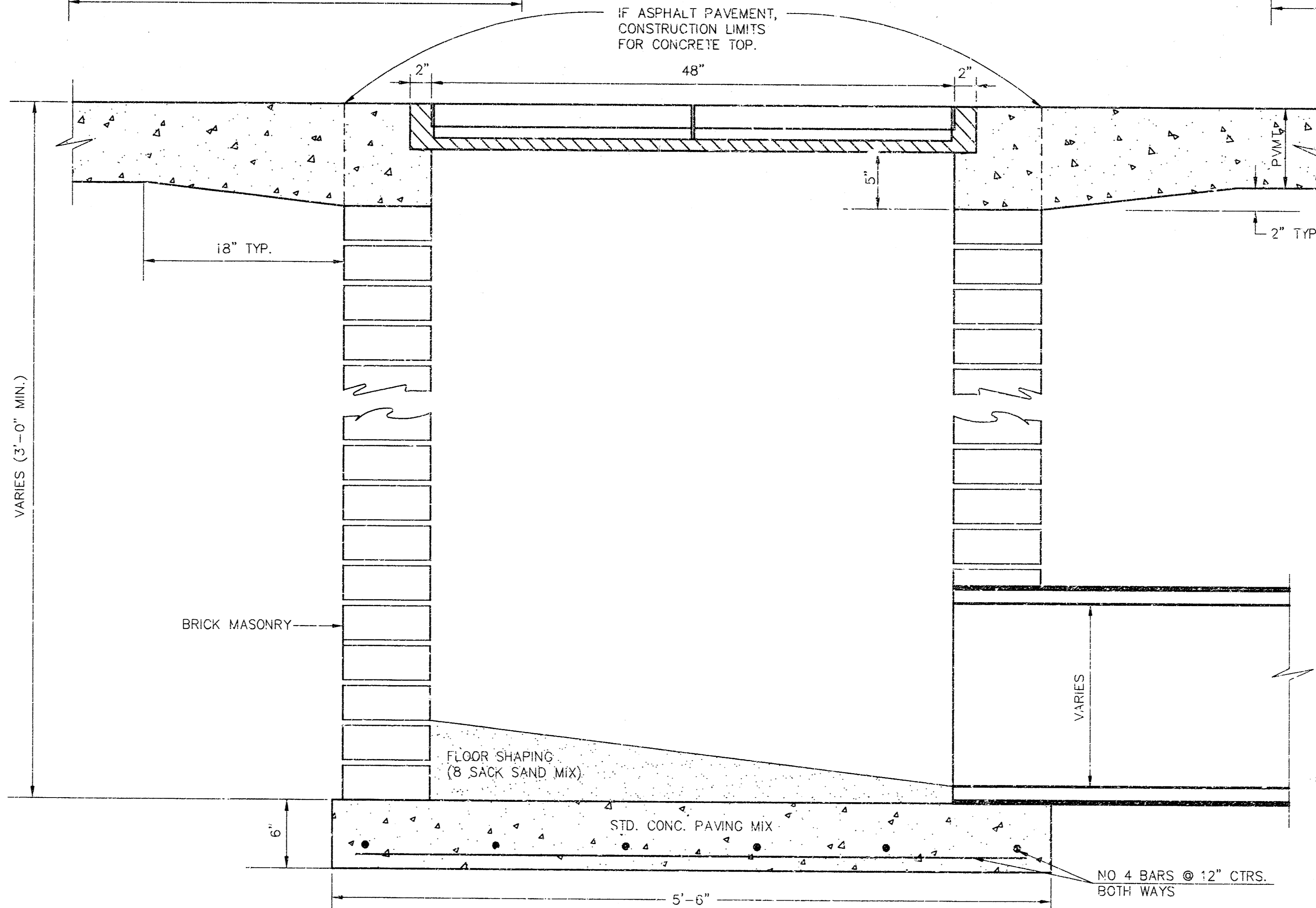
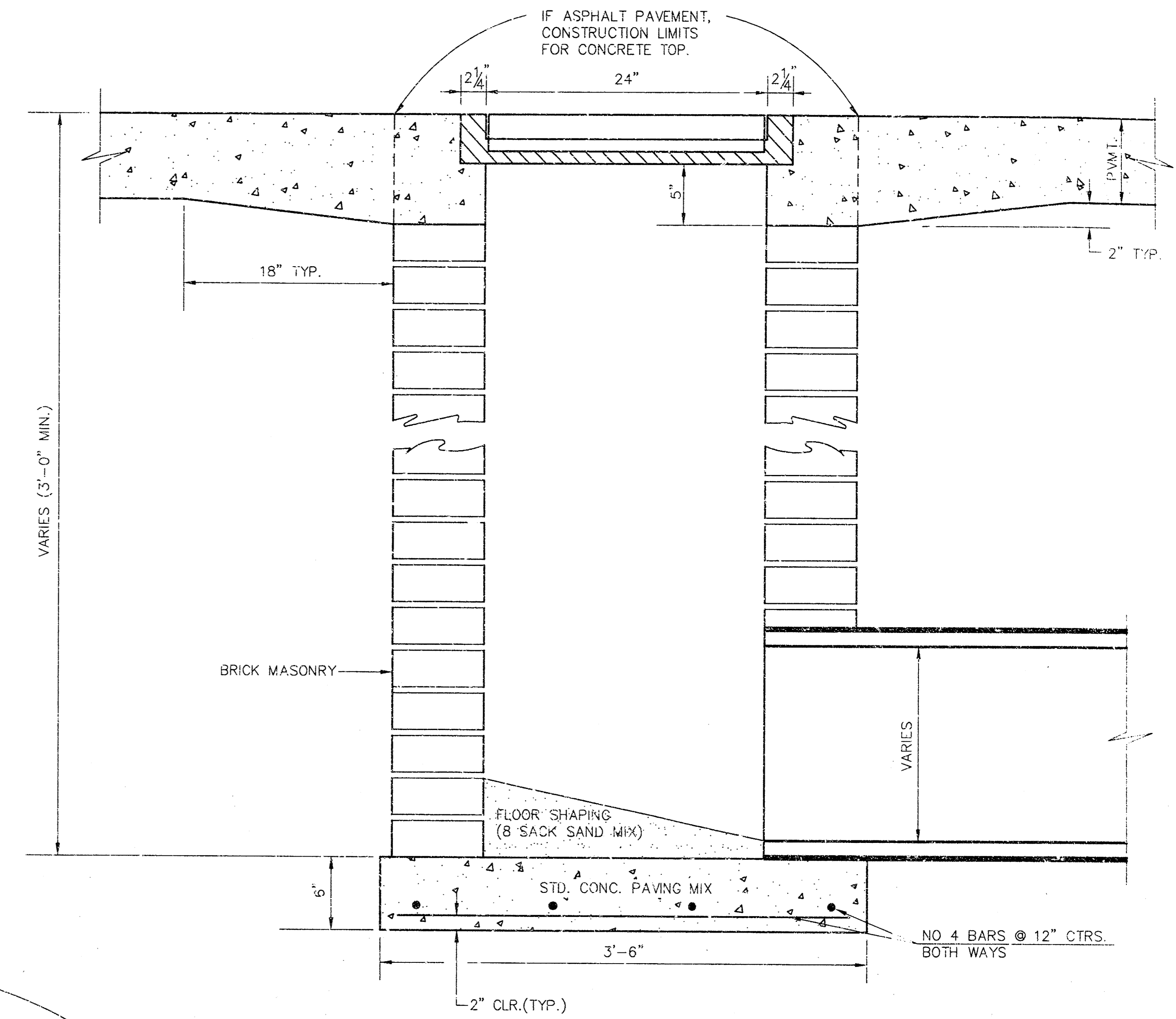
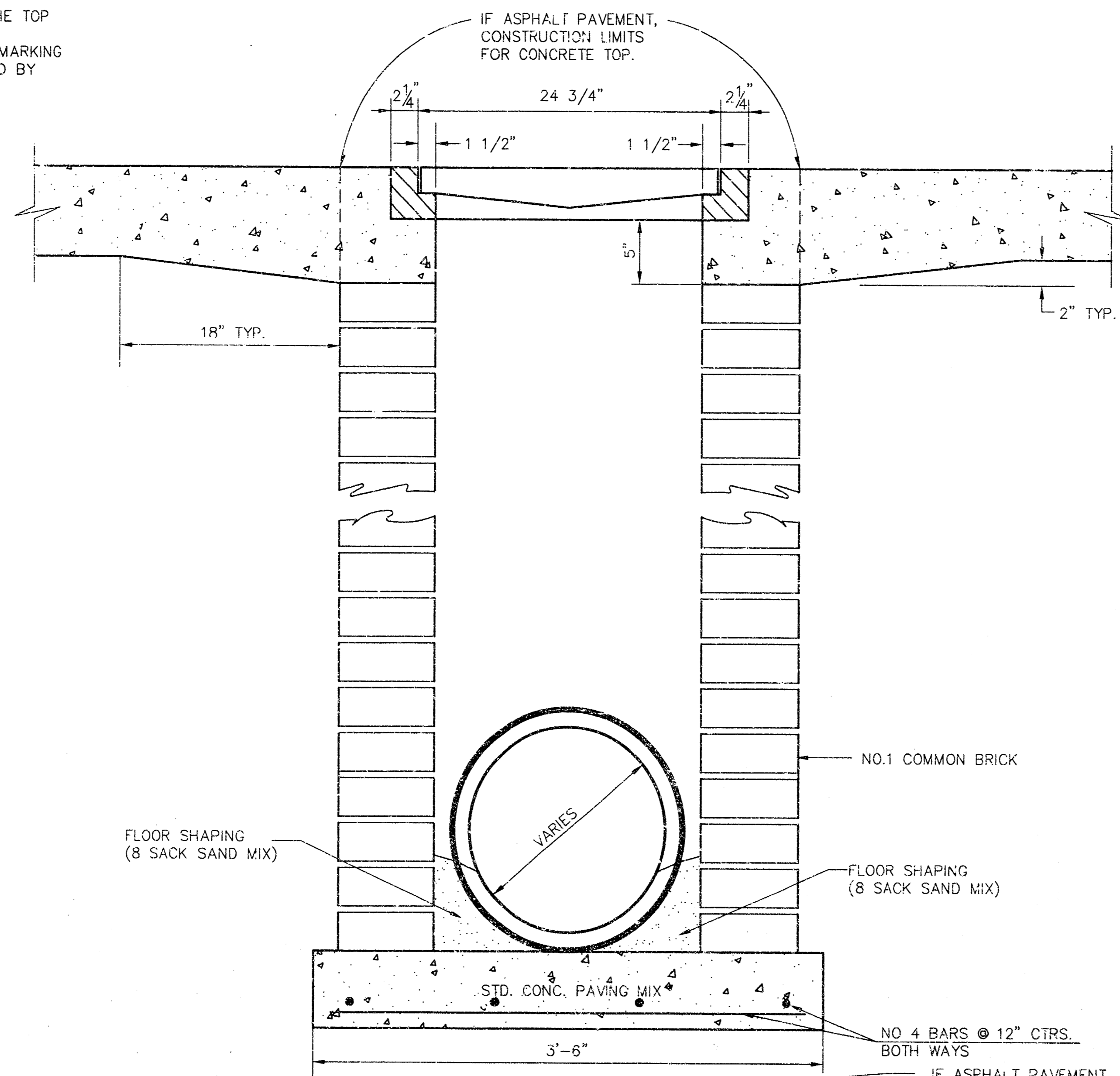
24"x24" GRATE DETAIL



SINGLE 24"x24" FRAME DETAIL



DOUBLE 24"x24" FRAME DETAIL



ORIFICE EQUATION		
$Q=C \cdot A \cdot \sqrt{2gh}$ $C=0.60$		
h (DEPTH)	#2433 (SINGLE)	#2434 (DOUBLE)
0.1	1.95 cfs	3.89 cfs
0.2	2.75 cfs	5.50 cfs
0.3	3.37 cfs	6.74 cfs
0.4	3.89 cfs	7.78 cfs
0.5	4.35 cfs	8.70 cfs
0.6	4.77 cfs	9.53 cfs
0.7	5.15 cfs	10.30 cfs
0.8	5.50 cfs	11.01 cfs
0.9	5.84 cfs	11.67 cfs
1.0	6.15 cfs	12.30 cfs

ALLEN ELEMENTARY SCHOOL
PROJECT NAME

DROP INLET DETAILS
SHEET TITLE

MKEC ENGINEERING CONSULTANTS
411 N. WEBB ROAD
WICHITA, KS. 67209
316-684-9600

MAY 2002
DATE

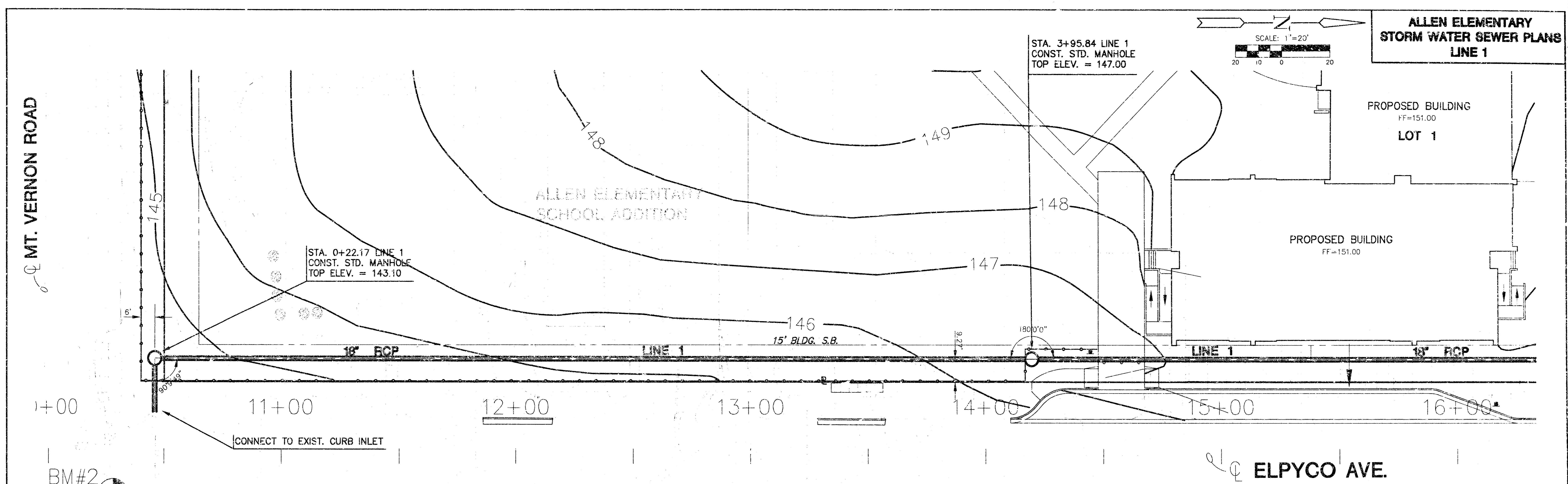
GJR
DRAWN BY:

MKEC
CHECKED BY:

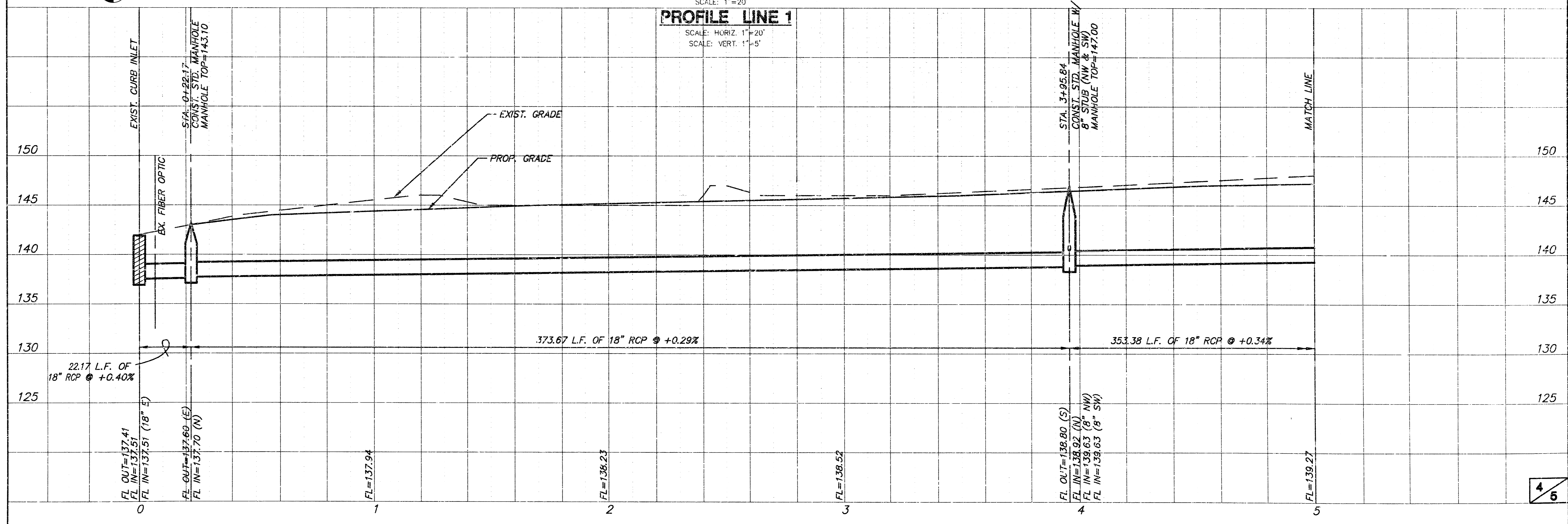
DETAIL-1
DRAWING NAME

2 / 5
SHEET / OF

MAY 13 10:24 AM 2002



PLAN LINE 1
SCALE: 1"=20'

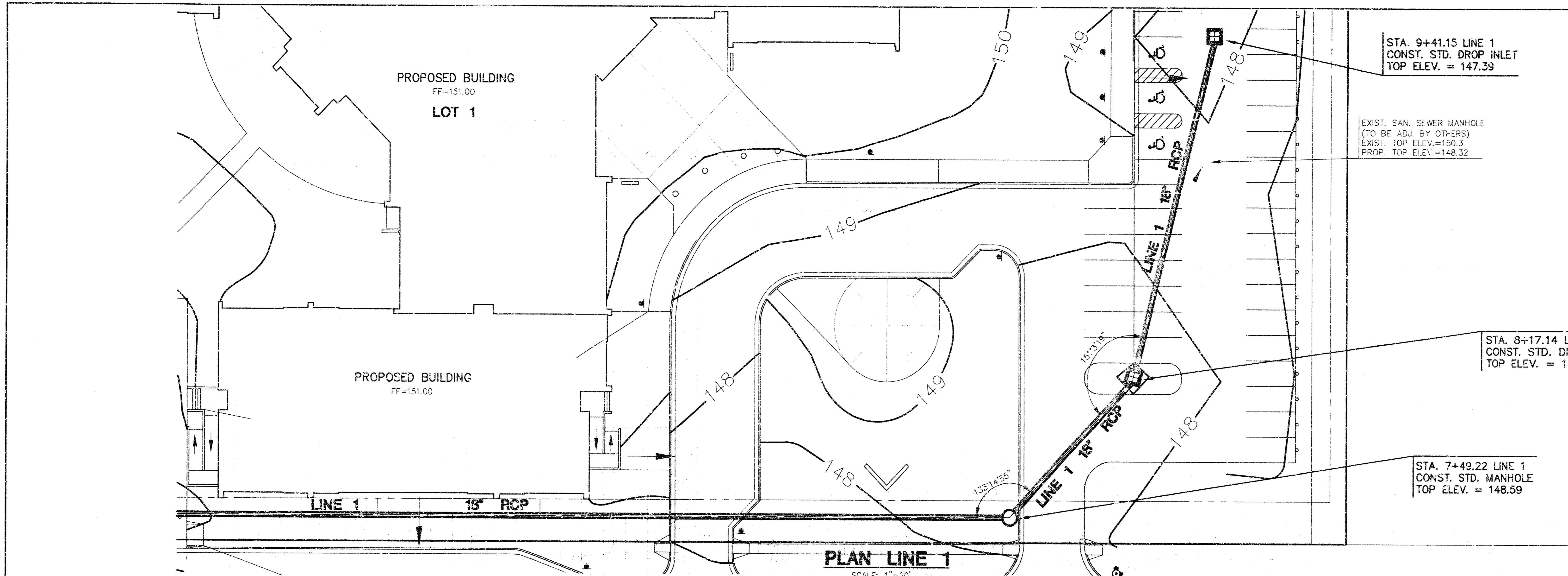
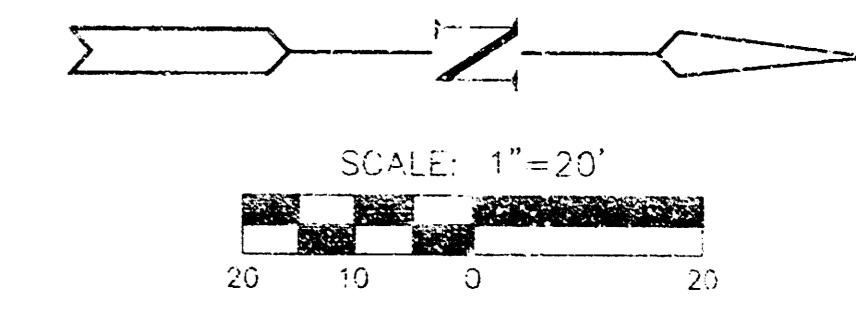


PROFILE LINE 1
SCALE: HORIZ. 1"=20'
SCALE: VERT. 1"=5'

Station	FL OUT	FL IN	Notes
0	137.41	137.51	18" RCP @ +0.40%
0+22.17	137.69	137.70	Manhole (N)
1	137.94		
2	138.23		
3	138.52		
4	138.80	138.92	Manhole (S)
4	138.63	138.63	Manhole (NW)
4	138.63	138.63	Manhole (SW)
5	139.27		Match Line

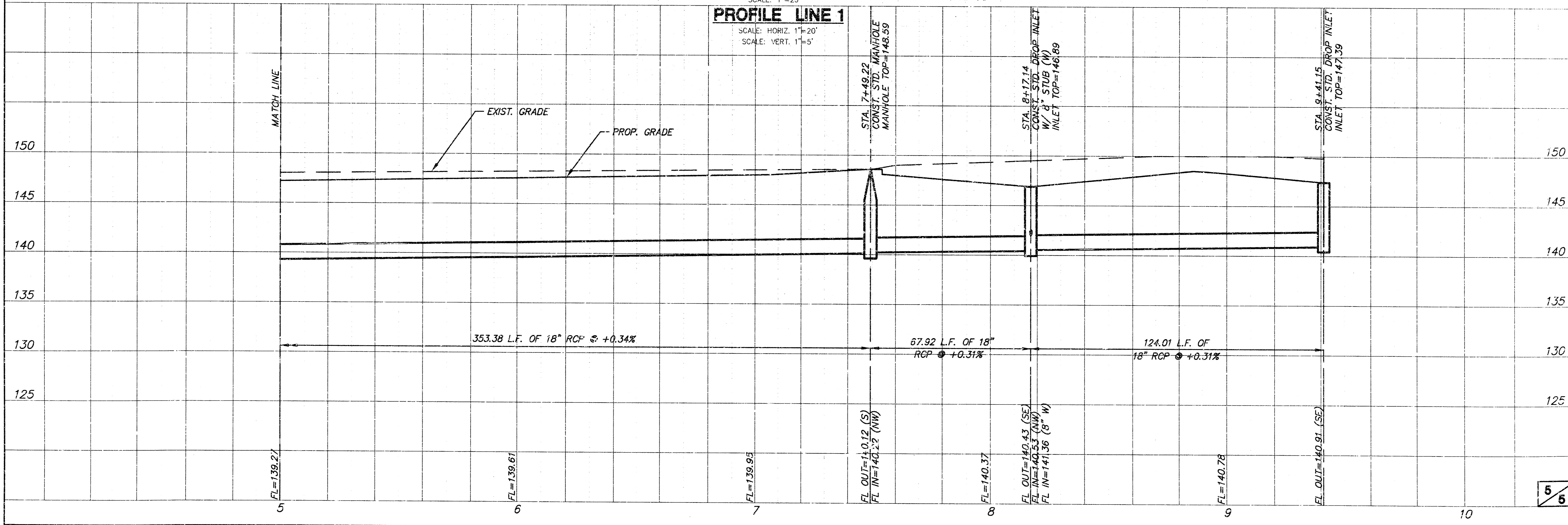
14P MAY 14 13:55:10 2012

**ALLEN ELEMENTARY
STORM WATER SEWER PLANS
LINE 1**



PROFILE LINE 1

SCALE: HORIZ. 1"=20'
SCALE: VERT. 1"=5'



80 40 FT 81

REV. MAY 13 10:30 AM 2002