

# Coleman Middle School Storm Sewer Improvements

Project Number  
1252 PPS (607861)  
CITY OF WICHITA, KANSAS  
Michael E. Lindebak, P.E., City Engineer

## GENERAL NOTES

- Contractor will be required to provide notice to utility companies a minimum of twenty-four (24) hours prior to any excavation, as follows:  

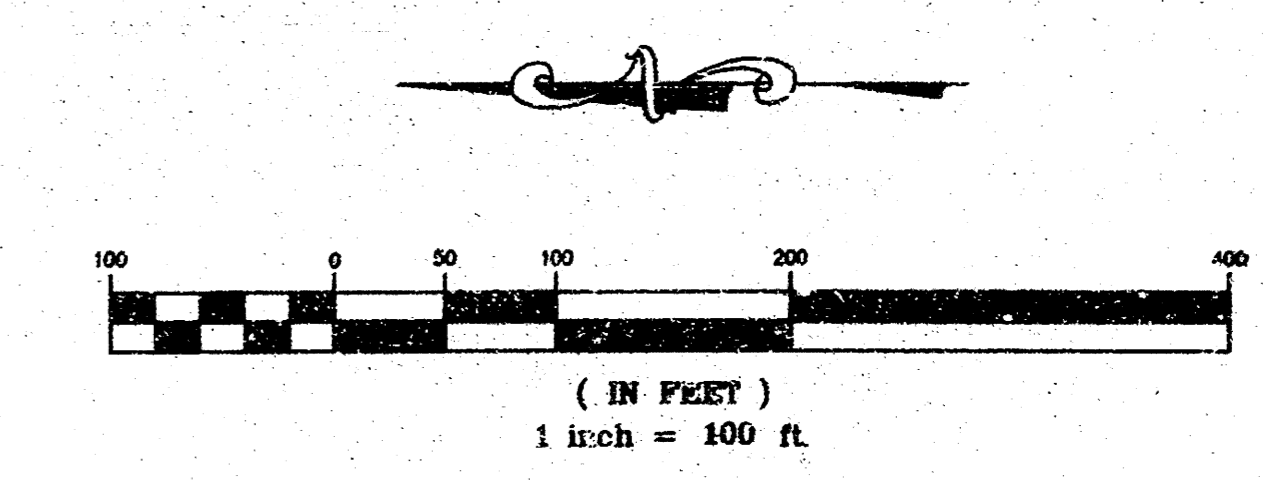
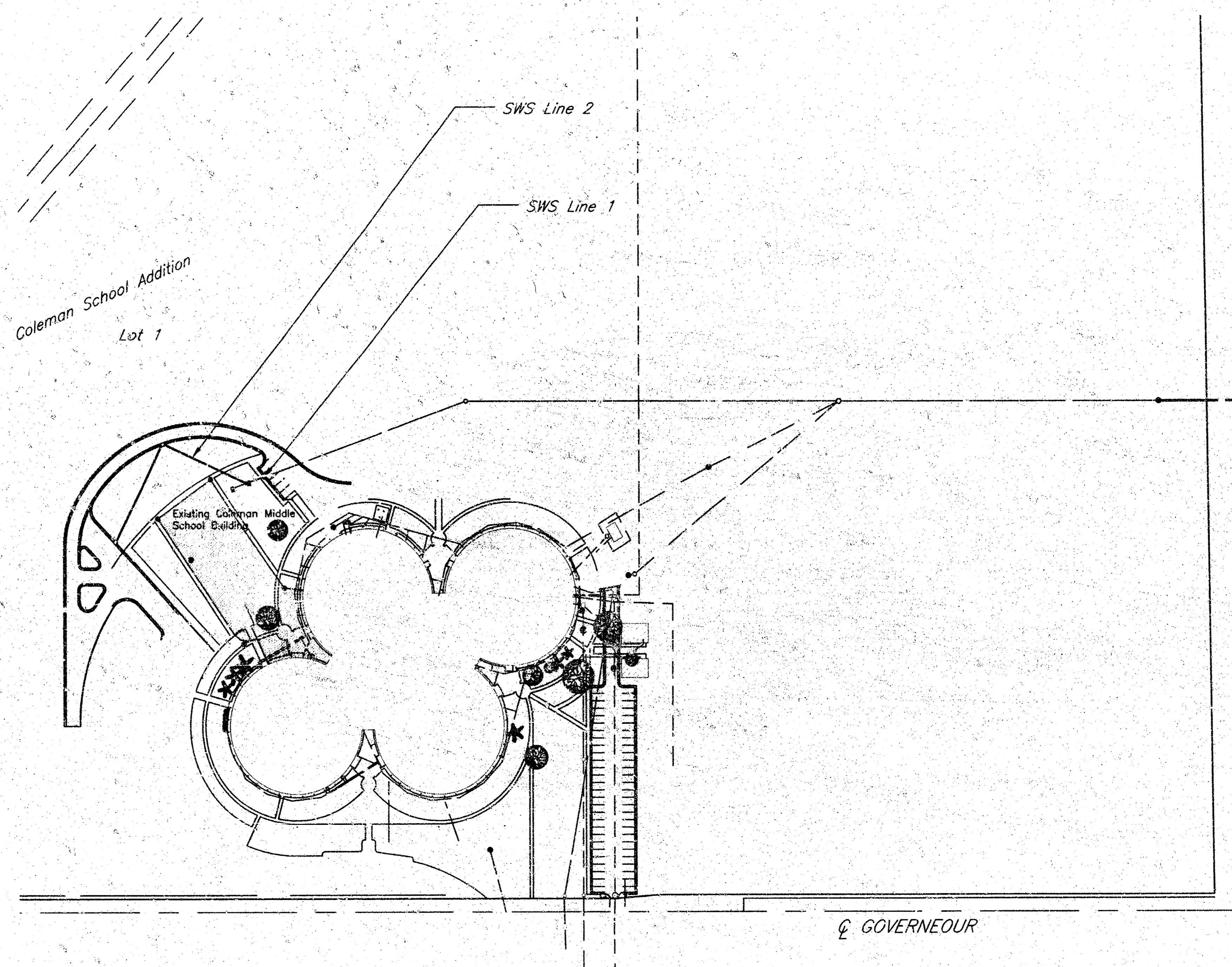
|                 |          |
|-----------------|----------|
| Kansas One-Call | 687-2470 |
|-----------------|----------|

The Contractor must notify the following in case of an emergency:

|                               |          |
|-------------------------------|----------|
| Cablevision                   | 262-4270 |
| or                            | 263-2061 |
| K.P.L. Gas Service Company    | 383-8650 |
| Kansas Gas & Electric Company | 383-8600 |

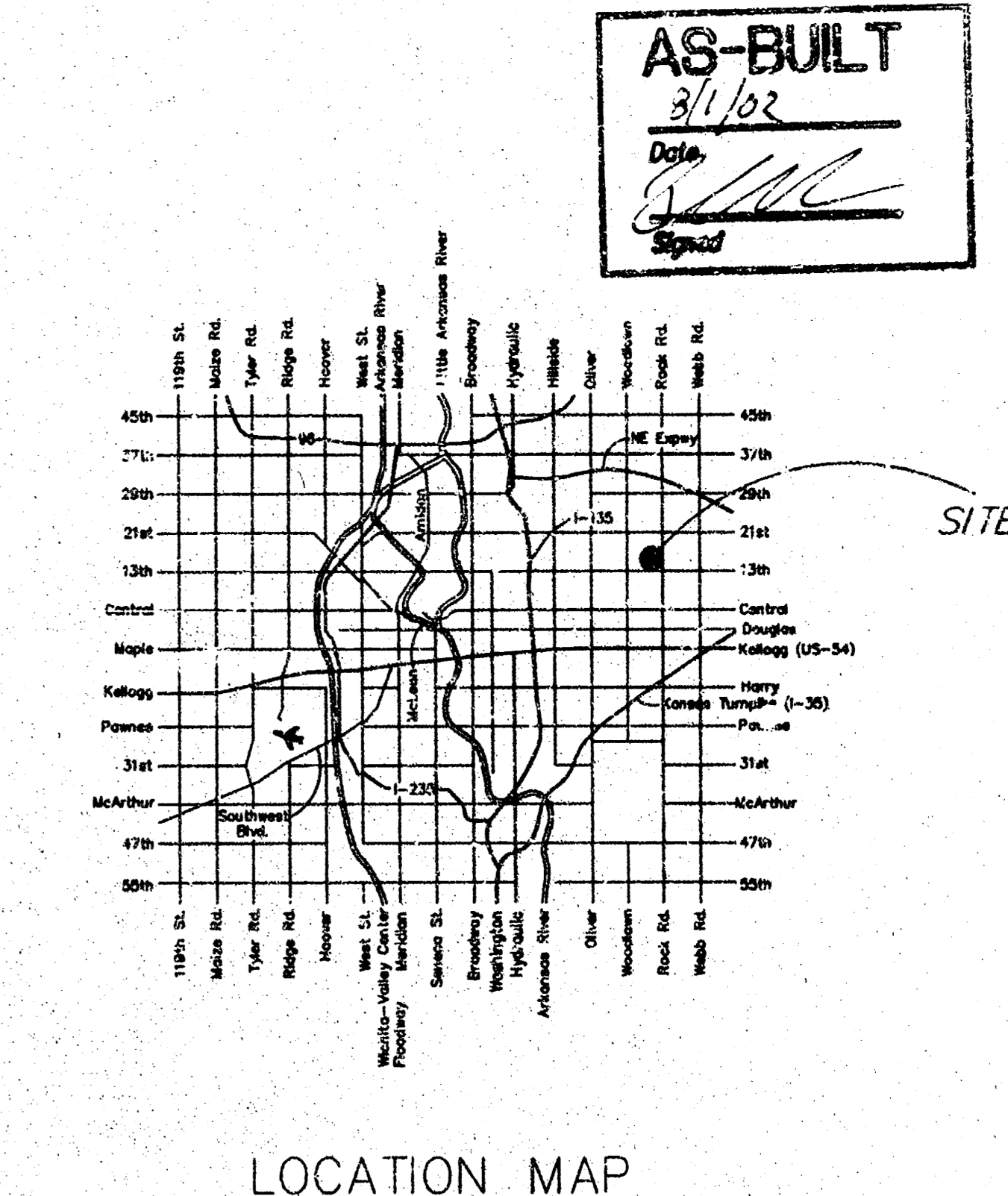
Peoples Natural Gas  
 Southwestern Bell Telephone Company 1-571-2611  
 City of Wichita Water Department 268-4908  
 City of Wichita Sewer Department 268-4071  
 Kansas Gas Service 832-3168  
 or 832-3167  
 Peoples Natural Gas 942-8811  
 or 1-800-303-0357
- Exist. utilities and their locations, as shown on the plans, represent the best information obtainable for design. Location information has been obtained from the various utility companies and is either from company record drawings or company-provided field locations. The Contractor will be required to work around existing utilities which do not conflict with proposed construction.
- The Contractor to verify utility locations prior to construction of this project.
- Utility service and installation shall be coordinated with the respective utility owners. Contacts are:  

|                        |               |          |
|------------------------|---------------|----------|
| Kansas Gas Service     | James Stoltz  | 831-3122 |
| Kansas Gas & Electric  | Russ Chitwood | 261-6231 |
| Peoples Natural Gas    | John Stark    | 942-8811 |
| Wichita Water          | Paul Bryant   | 268-4555 |
|                        | Steve Palmer  | 268-4908 |
| Southwestern Bell      | Jim Tobin     | 268-2759 |
| Multimedia Cablevision | Mark Anaya    | 262-4270 |
- All lawn/turf areas disturbed by construction of proposed improvements shall be restored with sod. All sodding work shall be in accordance with the City of Wichita standard specifications and the City of Wichita administrative regulation No. AR78 which governs cleanup and replacement following construction. All costs for this work shall be subsidiary to the lump sum price bid for "Site Restoration."
- Traffic affected by the construction of this project shall be handled in accordance with the latest edition of the Manual on Uniform Traffic Control Devices.
- All commercial signs to be moved by others prior to construction.
- Properties within the project may have underground irrigation systems (lawn sprinklers) which conflict with the new construction. Contractor shall remove such components as needed during construction of the project. The irrigation system shall be reinstalled in like kind before project completion. Any irrigation system modifications required because of project improvements shall be coordinated with the property owner. Portions of underground irrigation systems not in conflict with construction shall be protected from damage and shall remain in place. All work related to underground irrigation/sprinklers shall be subsidiary to Site Restoration.
- Cuts made to paved surfaces on public property will be repaired by the City's contractor and charged against the owner / applicant. Unit repair Prices are available from the City at 268-4418. A surcharge may be applicable. Call 268-4118 for details. Repair costs to be paid prior to release of water Service if water service is affected.



INDEX OF SHEETS

|   |                         |
|---|-------------------------|
| 1 | Cover Sheet             |
| 2 | Plan and Profile Sheet  |
| 3 | Drop Inlet Detail Sheet |



APPROVED AS NOTED

Storm Sewers VRH 6/19/02

NOTE TO CONTRACTORS

Installation, inspection and testing for this project is to be provided by a Licensed Consulting Engineering Firm under contract with the Owner/Developer. Said inspection to be in accordance with the City of Wichita standard construction engineering practices and certified by a Licensed Professional Engineer. No work shall be performed in dedicated easements or public right-of-way by the Contractor without such inspection nor shall any work be commenced without written authorization by the City Engineer. All Construction and Materials shall comply with the City of Wichita Specifications and Standards (on file and available in the City Engineer's Office).

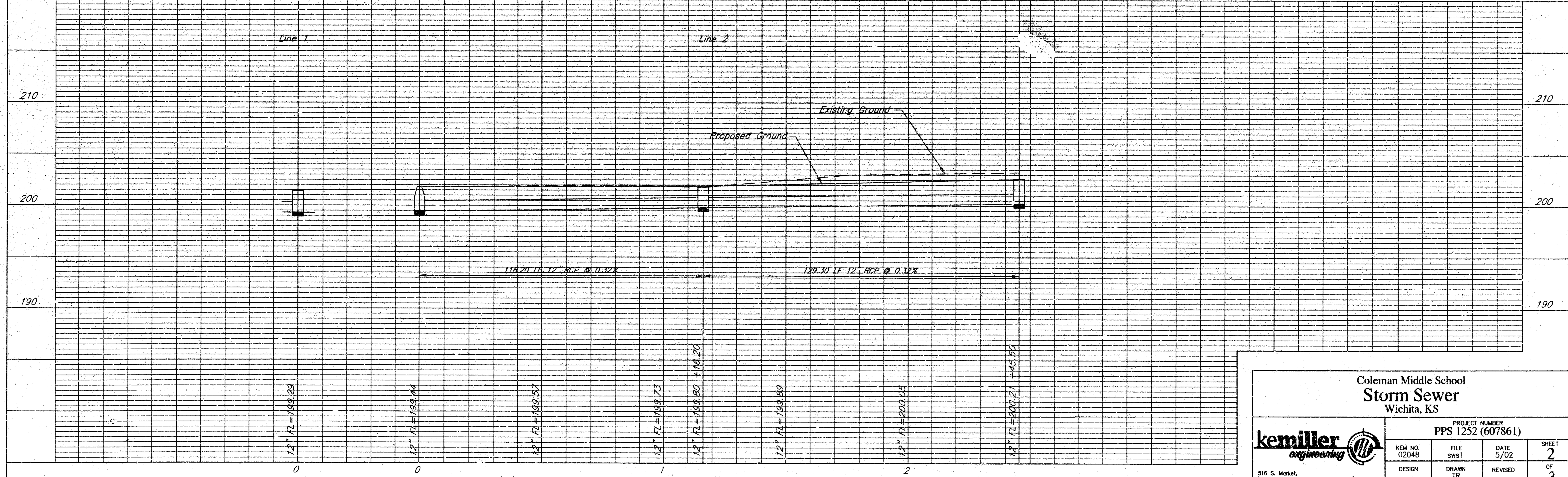
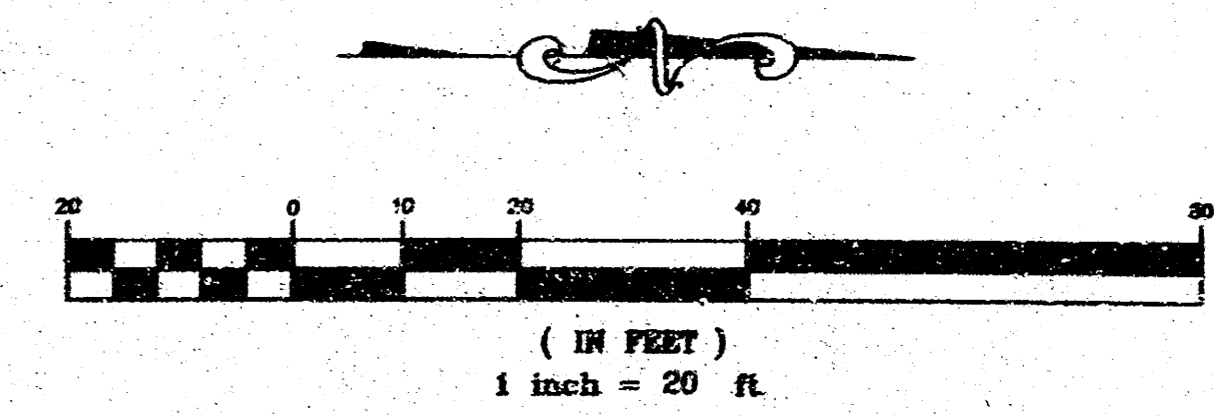
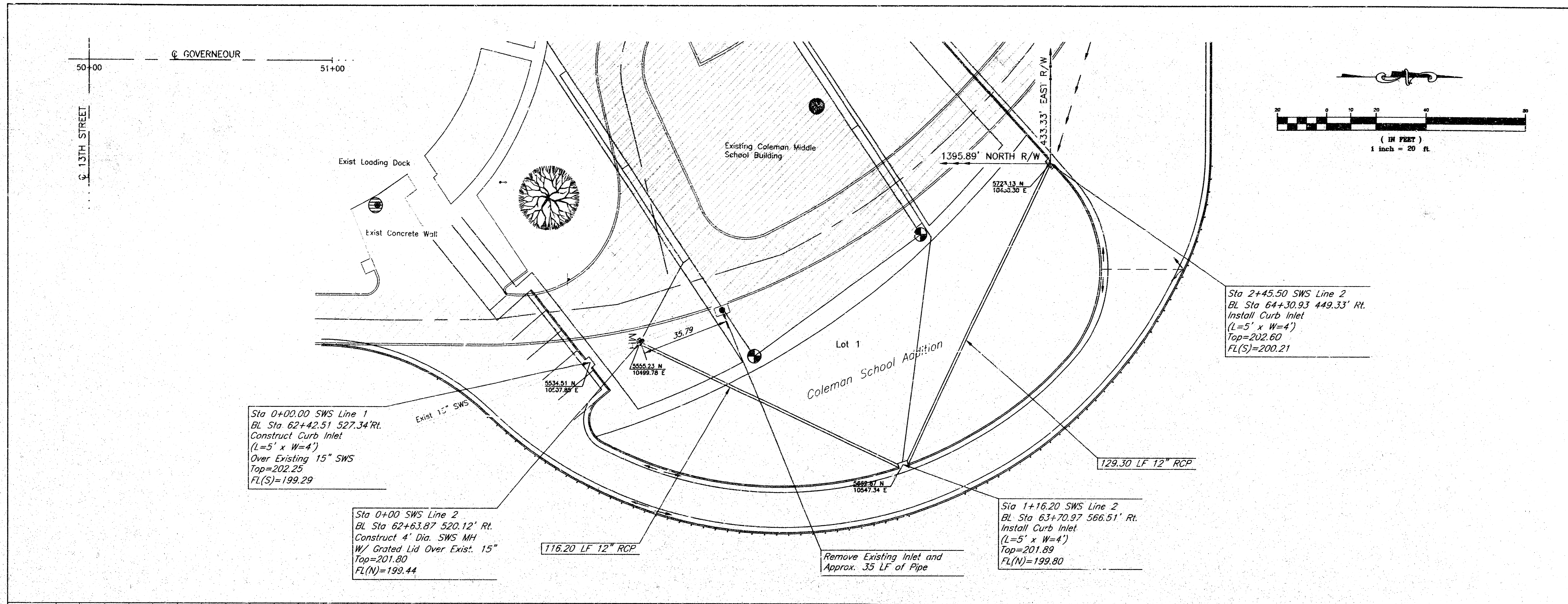
BENCHMARK  
 Governour and 13th Street North  
 COW Bench Mark, Northeast corner of intersection.  
 41.50 ft North of centerline  
 33.00 ft East of centerline  
 Elev= 19.762



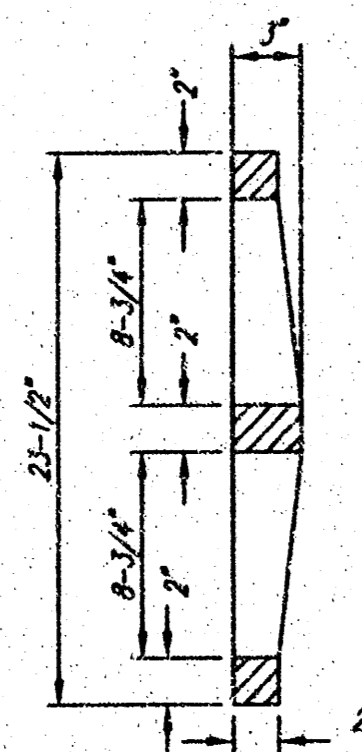
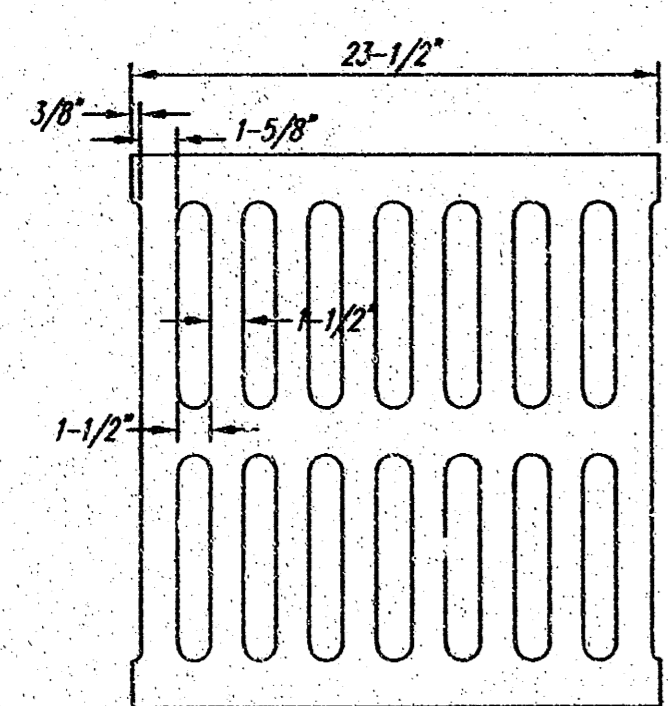
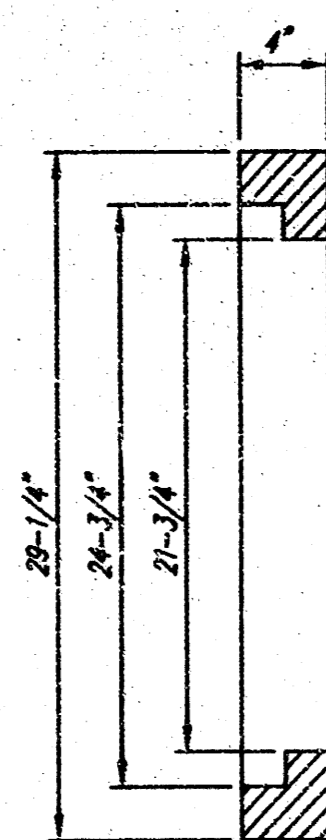
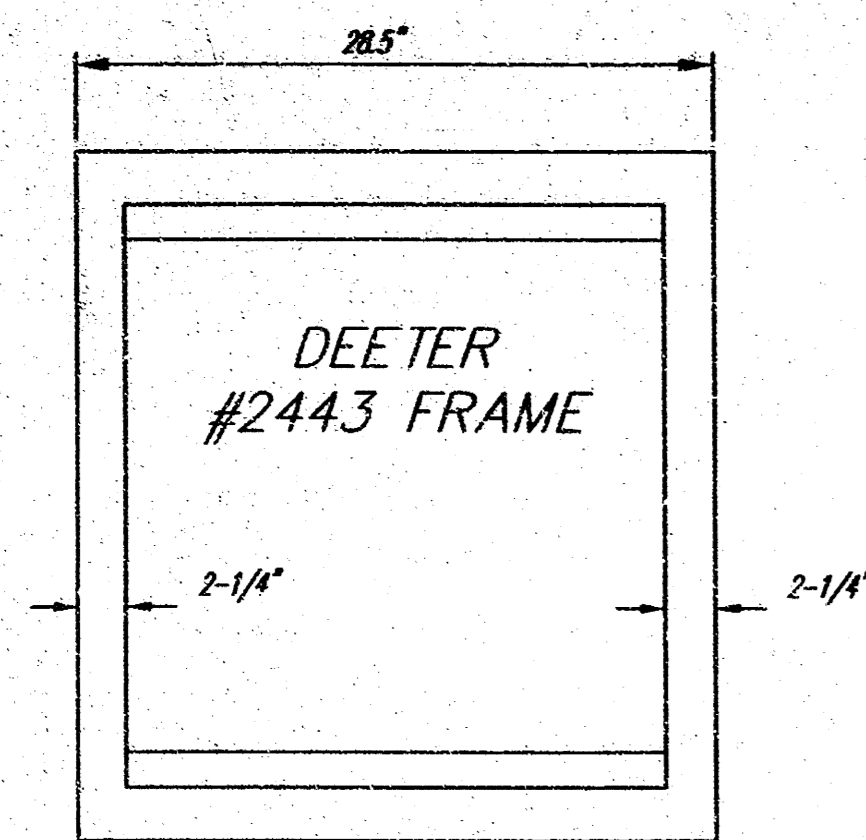
**kemiller**  
engineering

516 S. Market,  
Wichita, KS 67202

316/264-0242

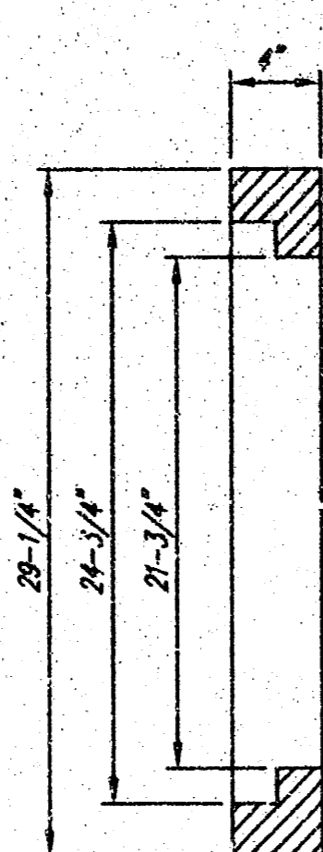
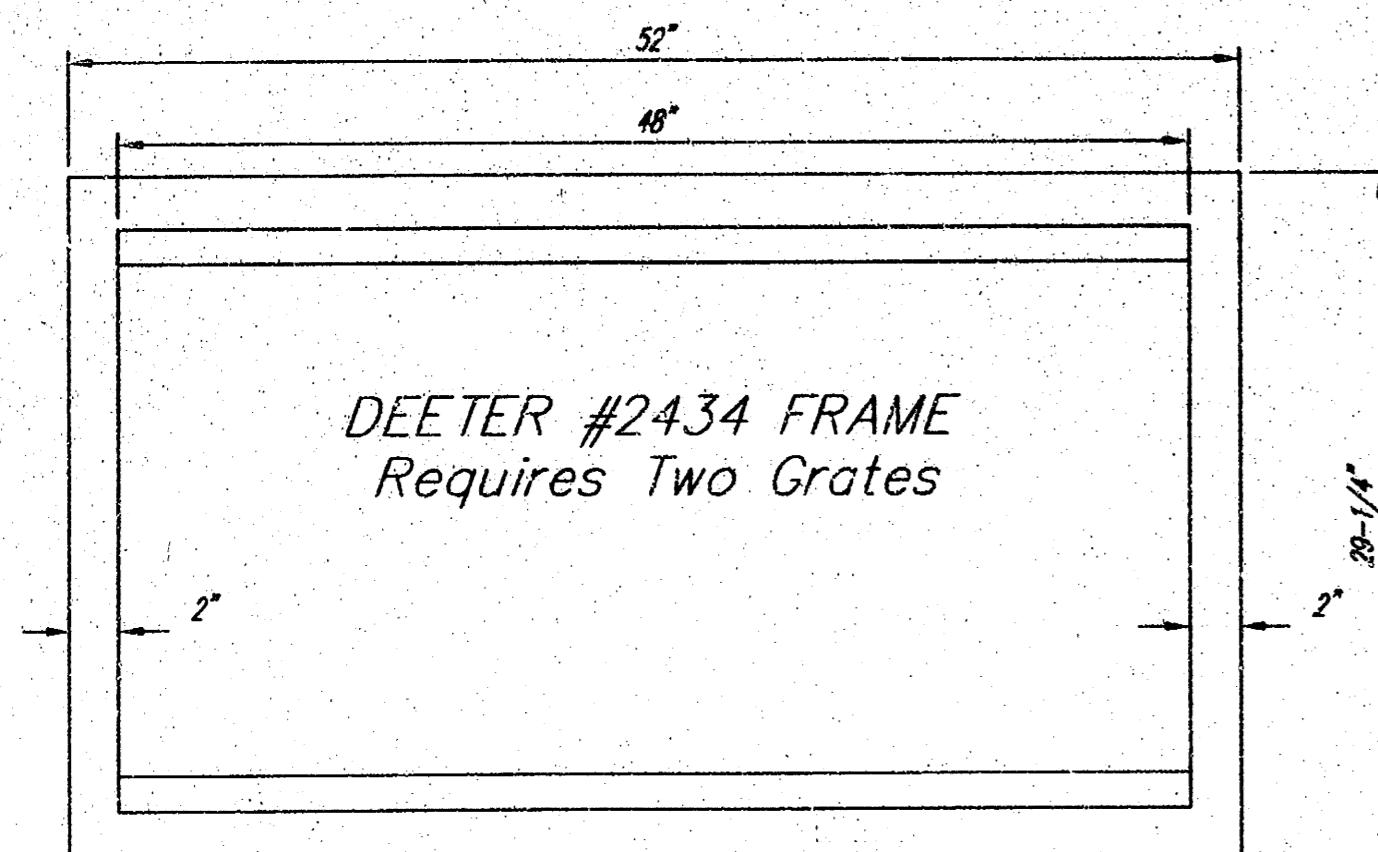


|  |                  |              |                |
|--|------------------|--------------|----------------|
| <b>Coleman Middle School<br/>Storm Sewer<br/>Wichita, KS</b> |                  |              |                |
| PROJECT NUMBER<br><b>PPS 1252 (607861)</b>                   |                  |              |                |
| <b>kemiller<br/>engineering</b>                              | KEM NO.<br>02048 | FILE<br>SWS1 | DATE<br>5/02   |
|  | DESIGN           | DRAWN<br>TR  | REVISED        |
| SHEET<br><b>2</b>  |                  |              | OF<br><b>3</b> |
| 316 S. Market,<br>Wichita, KS 67202                          |                  | 316/264-0242 |                |



DEETER #2433 GRATE

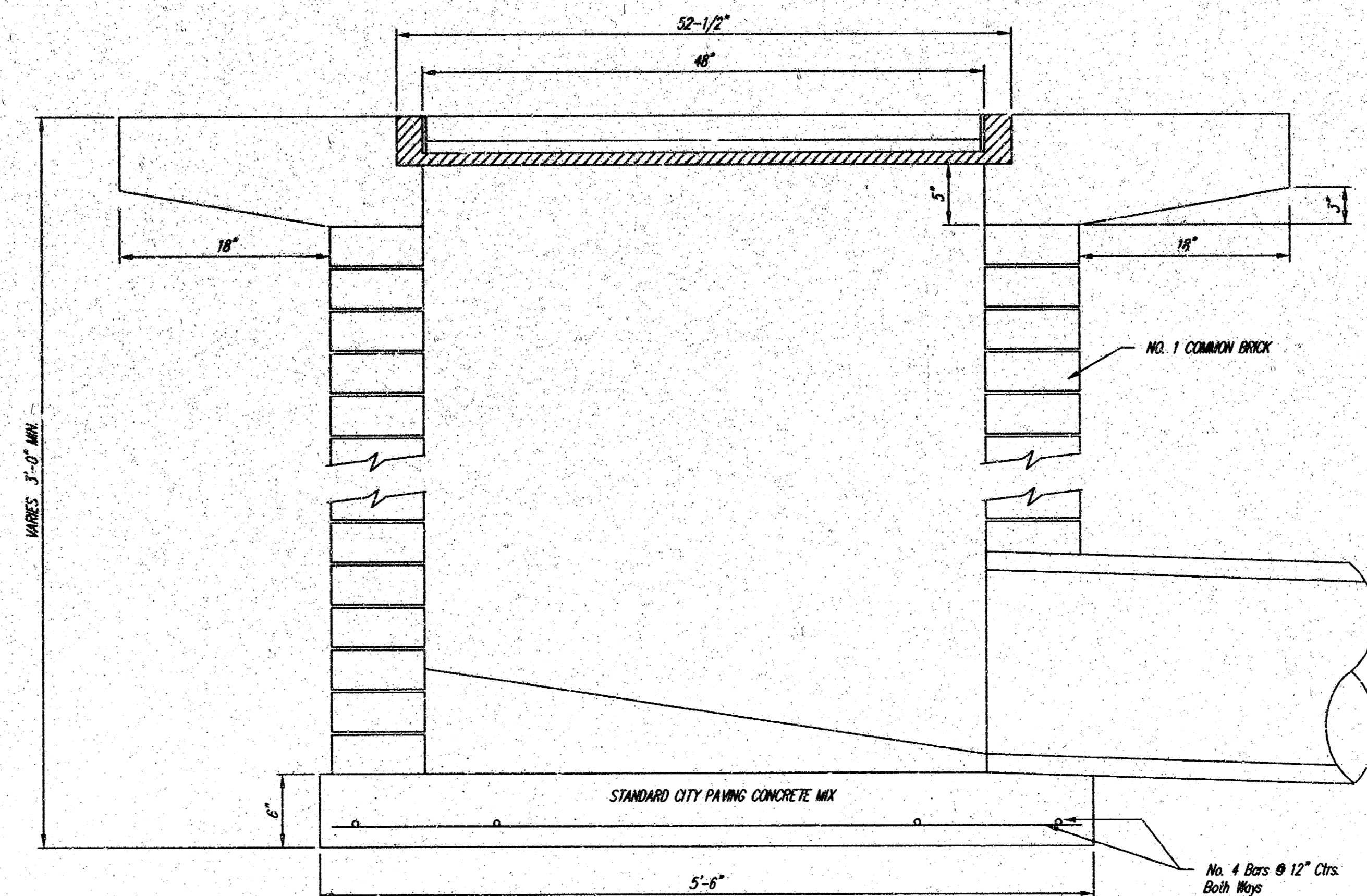
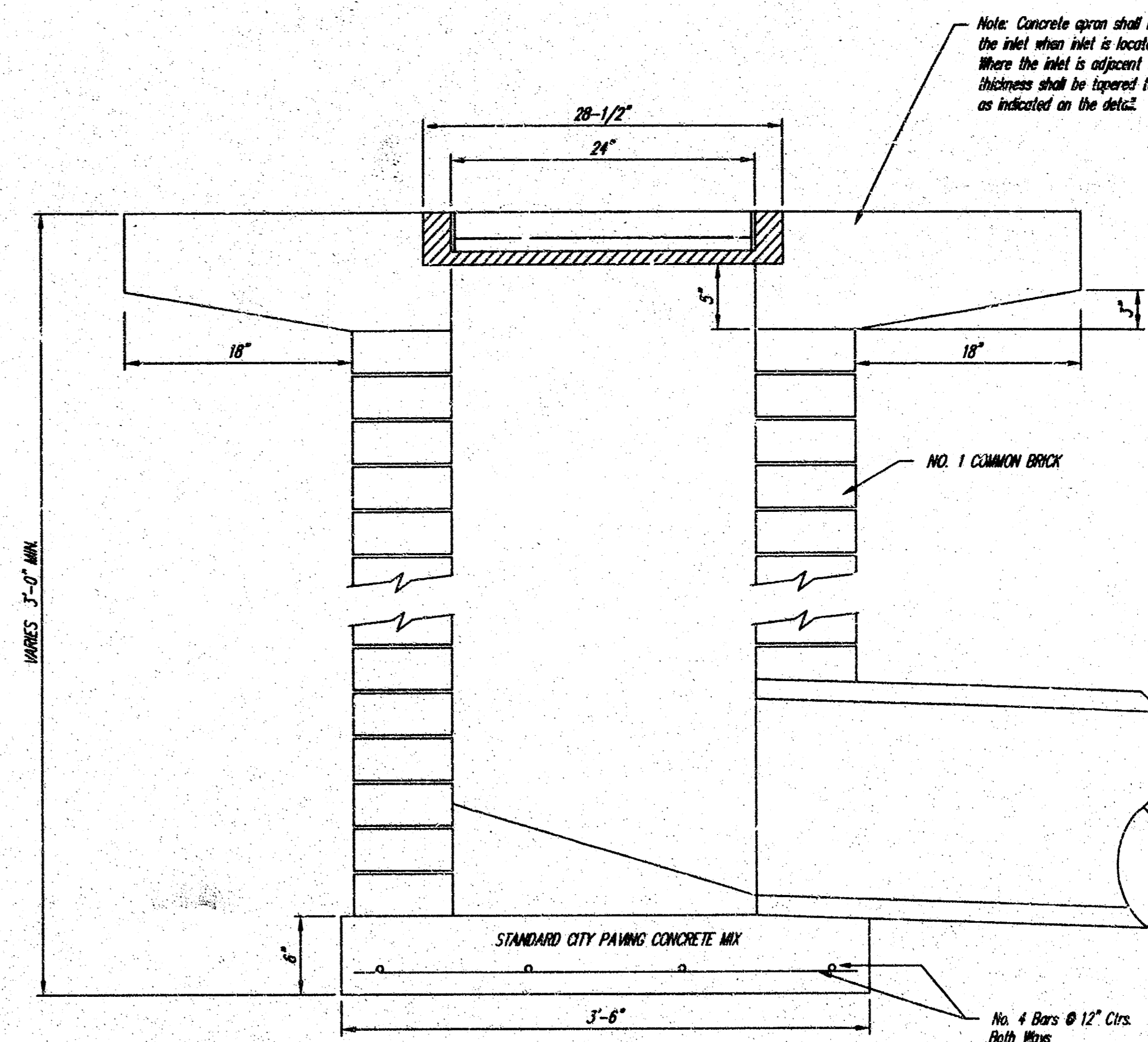
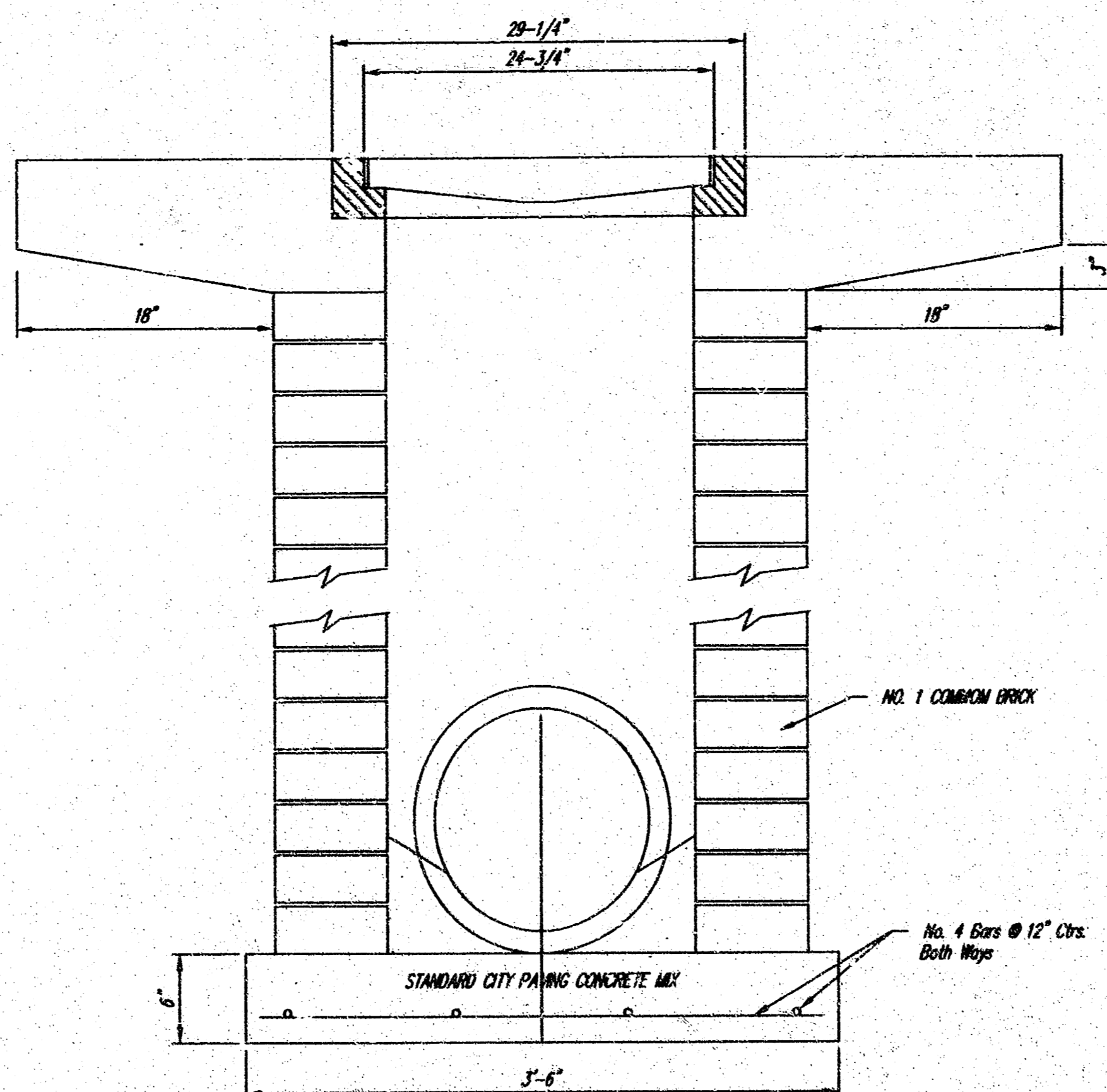
24" x 24" Frame and Grate Detail



DEETER #2434 FRAME  
Requires Two Grates

Double 24" x 24" Frame Detail

NOTE: Grates shall be imprinted on the top surface with "CITY OF WICHITA" using letters of least 1" in height. Other marking methods may be approved by the engineer.



|  |                                     |            |
|--|-------------------------------------|------------|
| <p>THE CITY OF WICHITA</p> <p>CITY ENGINEER'S OFFICE<br/>CITY HALL - SEVENTH FLOOR<br/>402 NORTH MAIN STREET<br/>WICHITA, KANSAS 67202<br/>(316) 268-4900<br/>(316) 268-4114 FAX</p> | <b>DROP INLET</b>                   |            |
|  | 2' X 2' X 4'                        |            |
|  | M. E. LINDEBAK P.E. - CITY ENGINEER |            |
|  | PROJECT NUMBER                      | INDEX CODE |
| XXXX-XXXXX   |                                     |            |
| DATE   | 3 OF 3                              |            |
| MAY 02   |                                     |            |

# Coleman Middle School Storm Sewer Improvements

Project Number  
1252 PPS (607861)  
CITY OF WICHITA, KANSAS  
Michael E. Lindebak, P.E., City Engineer

## GENERAL NOTES

- Contractor will be required to provide notice to utility companies a minimum of twenty-four (24) hours prior to any excavation, as follows:  

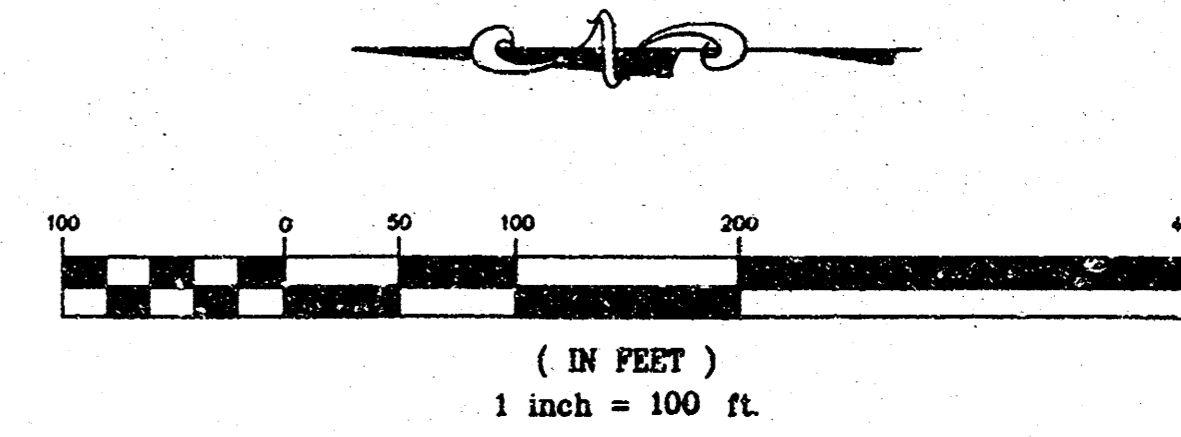
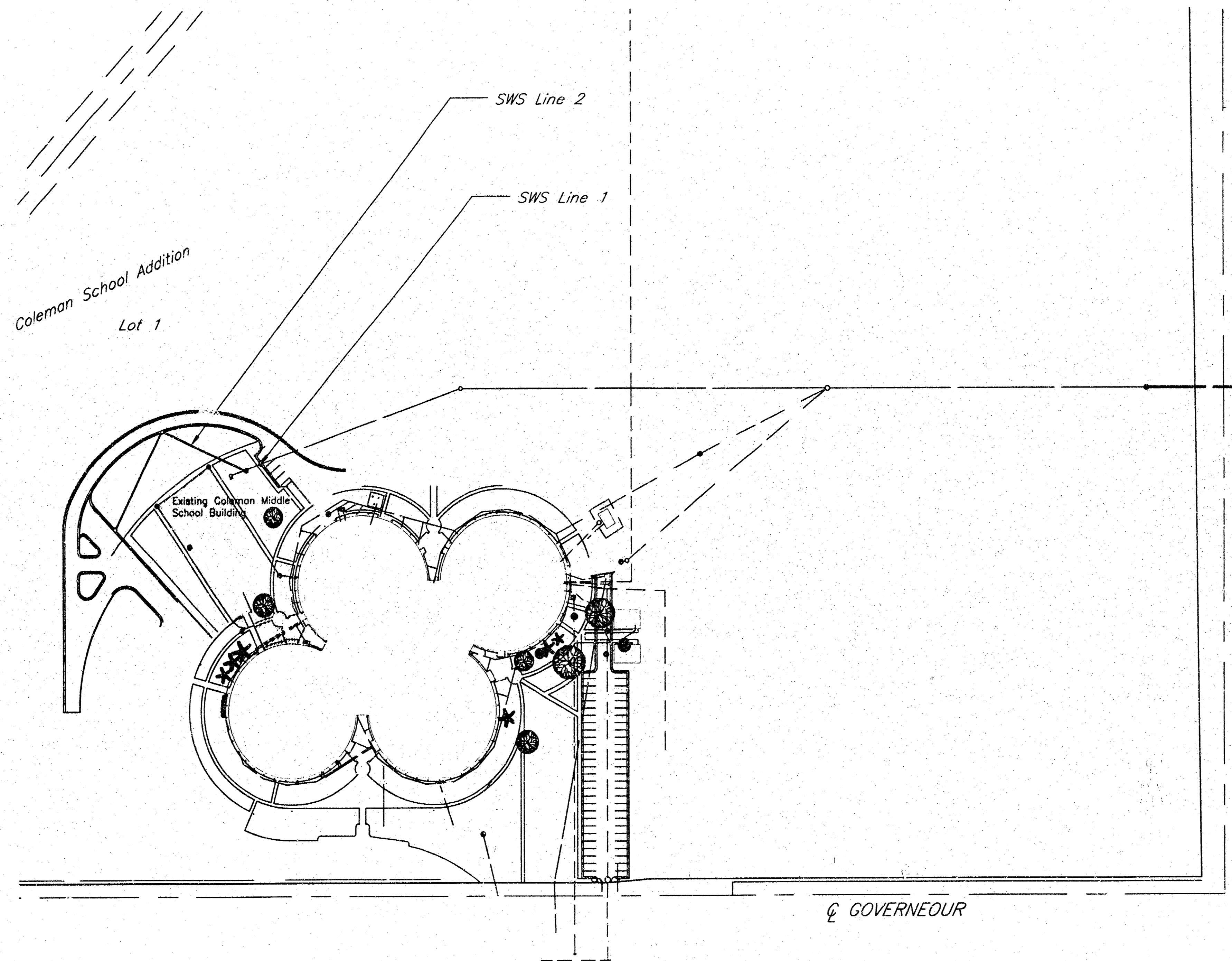
|                 |          |
|-----------------|----------|
| Kansas One-Call | 687-2470 |
|-----------------|----------|

The Contractor must notify the following in case of an emergency:

|                               |          |
|-------------------------------|----------|
| Cablevision                   | 262-4270 |
| or                            | 263-2061 |
| K.P.L. Gas Service Company    | 383-6650 |
| Kansas Gas & Electric Company | 383-8600 |

|                                     |                |
|-------------------------------------|----------------|
| Peoples Natural Gas                 | 262-4270       |
| Southwestern Bell Telephone Company | 1-571-2611     |
| City of Wichita Water Department    | 268-4908       |
| City of Wichita Sewer Department    | 268-4071       |
| Kansas Gas Service                  | 832-3168       |
| or                                  | 832-3167       |
| Peoples Natural Gas                 | 942-8811       |
| or                                  | 1-800-303-0357 |
- Exist. utilities and their locations, as shown on the plans, represent the best information obtainable for design. Location information has been obtained from the various utility companies and is either from company record drawings or company-provided field locations. The Contractor will be required to work around existing utilities which do not conflict with proposed construction.
- The Contractor to verify utility locations prior to construction of this project.
- Utility service and installation shall be coordinated with the respective utility owners. Contacts are:  

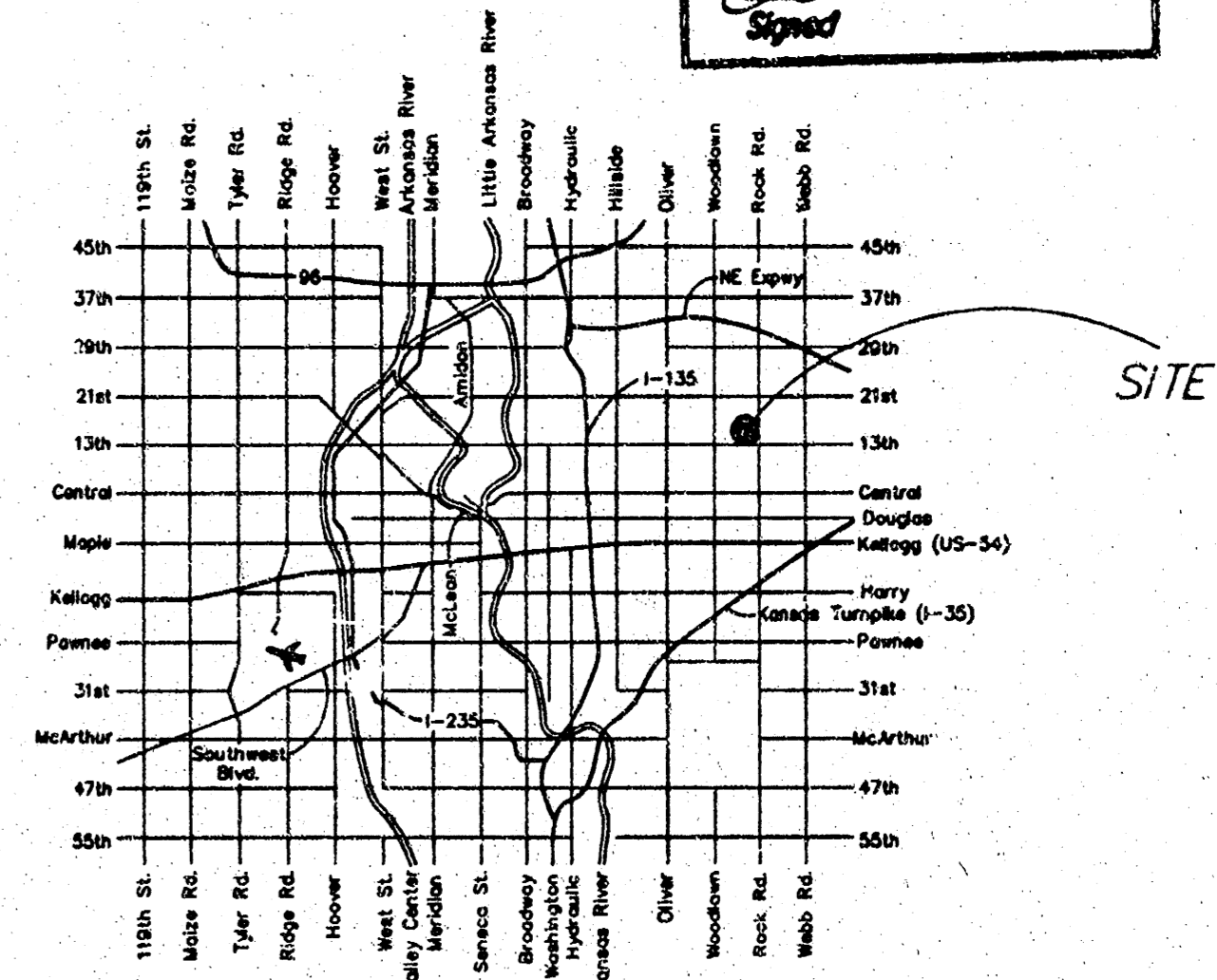
|                        |               |          |
|------------------------|---------------|----------|
| Kansas Gas Service     | James Stoltz  | 831-3122 |
| Kansas Gas & Electric  | Russ Chitwood | 261-6251 |
| Peoples Natural Gas    | John Stark    | 942-8811 |
| Wichita Water          | Paul Bryant   | 268-4555 |
|                        | Steve Palmer  | 268-4908 |
| Southwestern Bell      | Jim Tobin     | 268-2759 |
| Multimedia Cablevision | Mark Anaya    | 262-4270 |
- All lawn/turf areas disturbed by construction of proposed improvements shall be restored with sod. All sodding work shall be in accordance with the City of Wichita standard specifications and the City of Wichita administrative regulation No. AR78 which governs cleanup and replacement following construction. All costs for this work shall be subsidiary to the lump sum price bid for "Site Restoration."
- Traffic affected by the construction of this project shall be handled in accordance with the latest edition of the Manual on Uniform Traffic Control Devices.
- All commercial signs to be moved by others prior to construction.
- Properties within the project may have underground irrigation systems (lawn sprinklers) which conflict with the new construction. Contractor shall remove such components as needed during construction of the project. The irrigation system shall be reinstalled in like kind before project completion. Any irrigation system modifications required because of project improvements shall be coordinated with the property owner. Portions of underground irrigation systems not in conflict with construction shall be protected from damage and shall remain in place. All work related to underground irrigation/sprinklers shall be subsidiary to Site Restoration.
- Cuts made to paved surfaces on public property will be repaired by the City's contractor and charged against the owner / applicant. Unit repair Prices are available from the City at 268-4418. A surcharge may be applicable: Call 268-4118 for details. Repair costs to be paid prior to release of water Service if water service is affected.



INDEX OF SHEETS

|   |                         |
|---|-------------------------|
| 1 | Cover Sheet             |
| 2 | Plan and Profile Sheet  |
| 3 | Drop Inlet Detail Sheet |

AS-BUILT  
8/1/02  
Dyle  
Signed

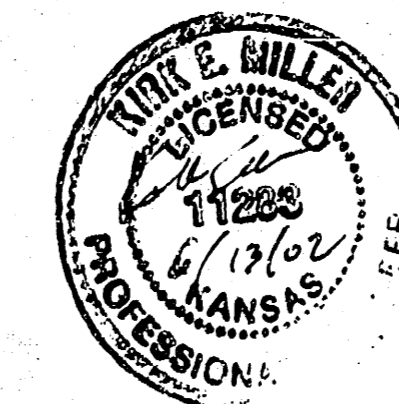


LOCATION MAP

APPROVED AS NOTED

Storm Sewers VRH 6/19/02  
NOTE TO CONTRACTORS

Installation, inspection and testing for this project is to be provided by a Licensed Consulting Engineering Firm under contract with the Owner/Developer. Said inspection to be in accordance with the City of Wichita standard construction engineering practices and certified by a Licensed Professional Engineer. No work shall be performed in dedicated easements or public right-of-way by the Contractor without such inspection nor shall any work be commenced without written authorization by the City Engineer. All Construction and Materials shall comply with the City of Wichita Specifications and Standards (on file and available in the City Engineer's Office).



**kemiller**  
engineering

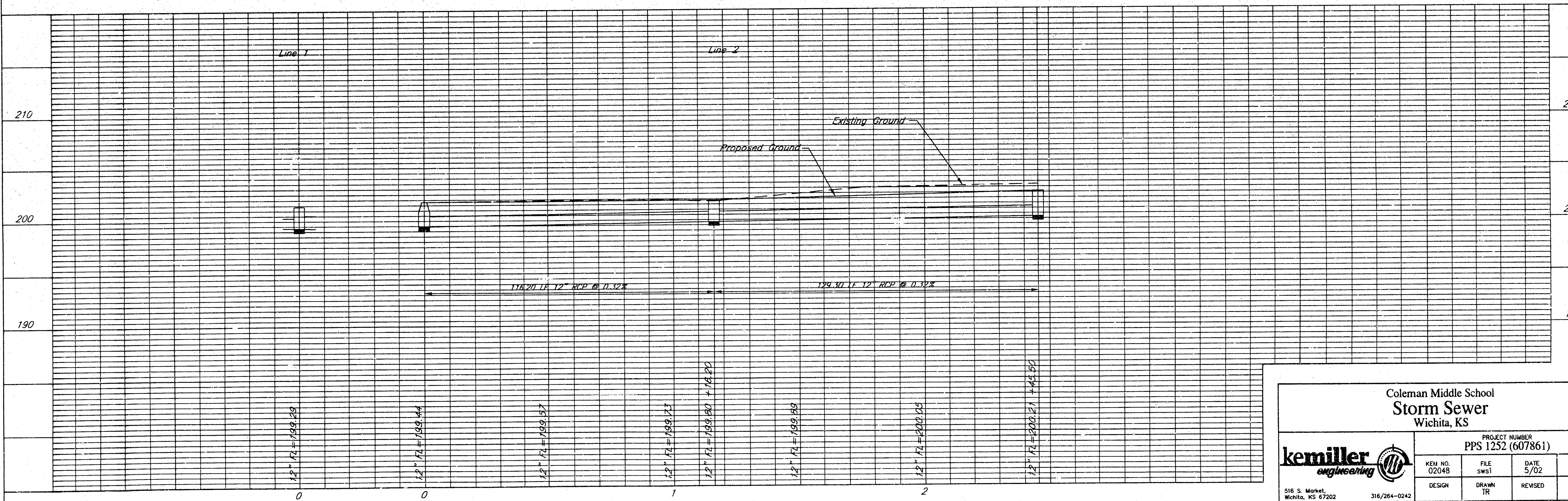
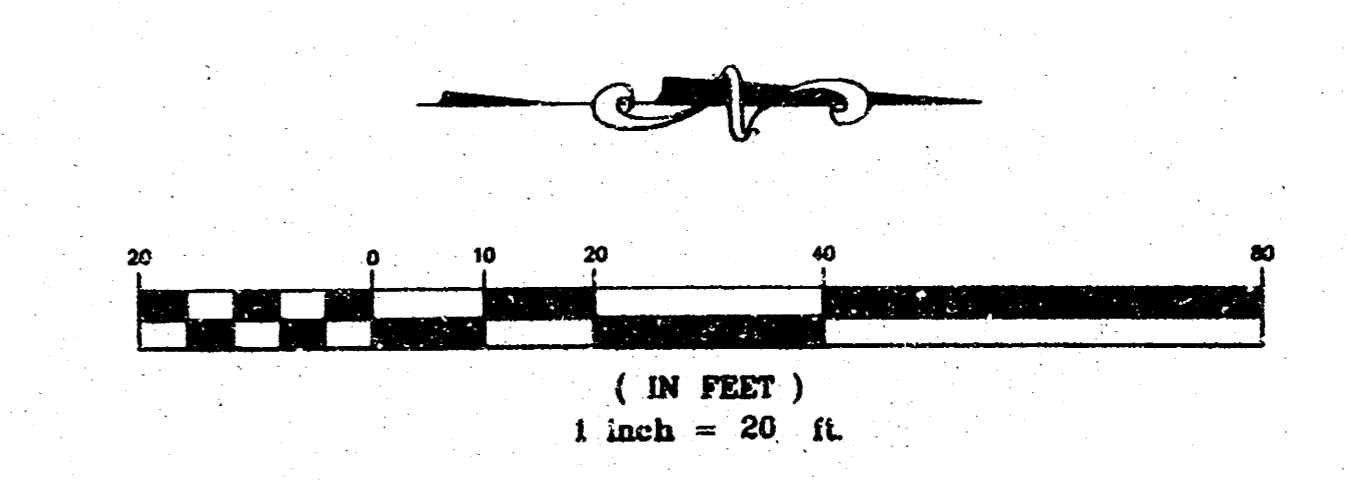
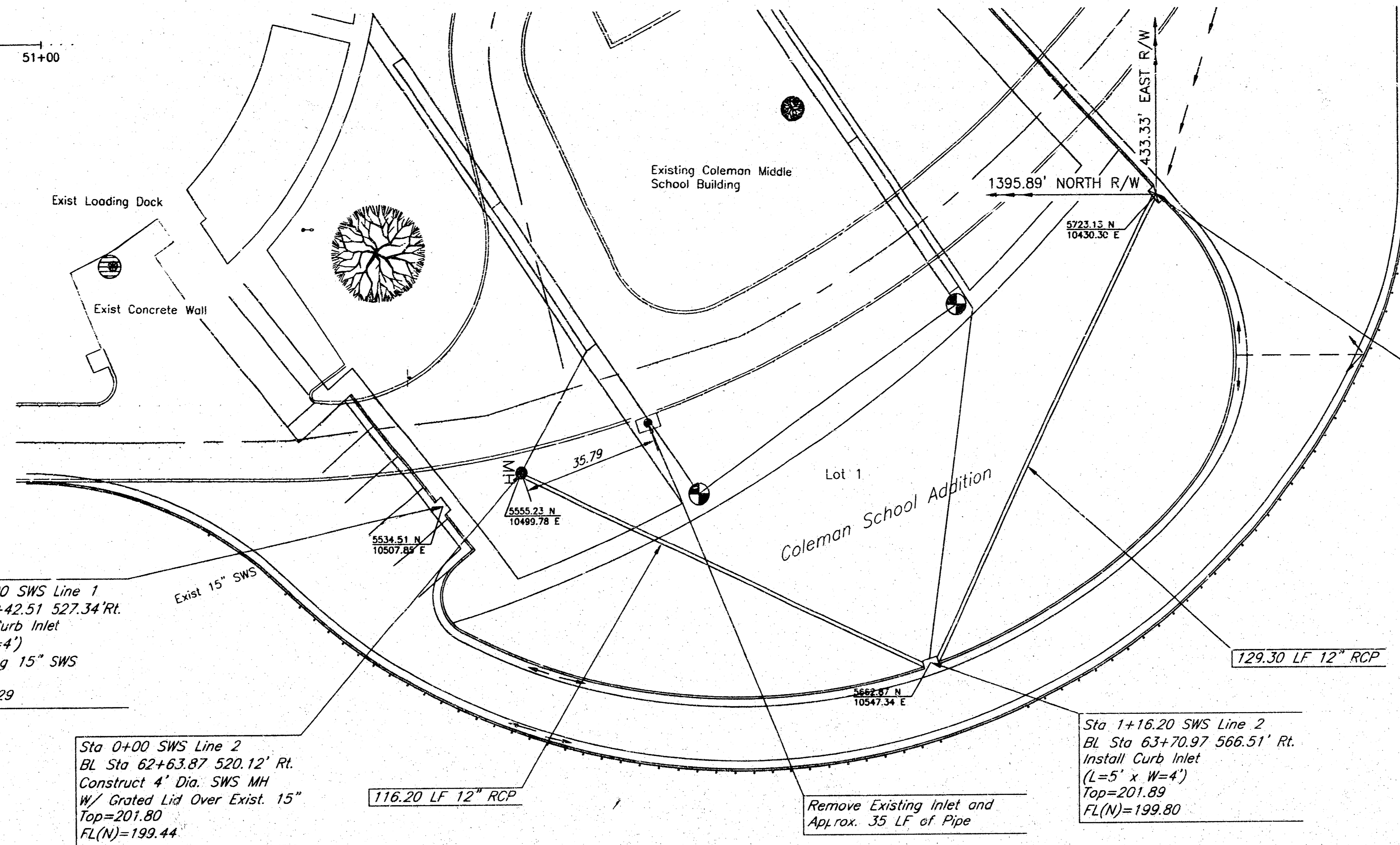
516 S. Market,  
Wichita, KS 67202

316/264-0242

BENCHMARK:  
Gouverneur and 13th Street North  
C&W Bench Mark, Northeast corner of intersection.  
41.50 ft North of centerline  
33.00 ft East of centerline  
Elev= 197.92

50+00 — GOVERNEUR — 51+00

13TH STREET



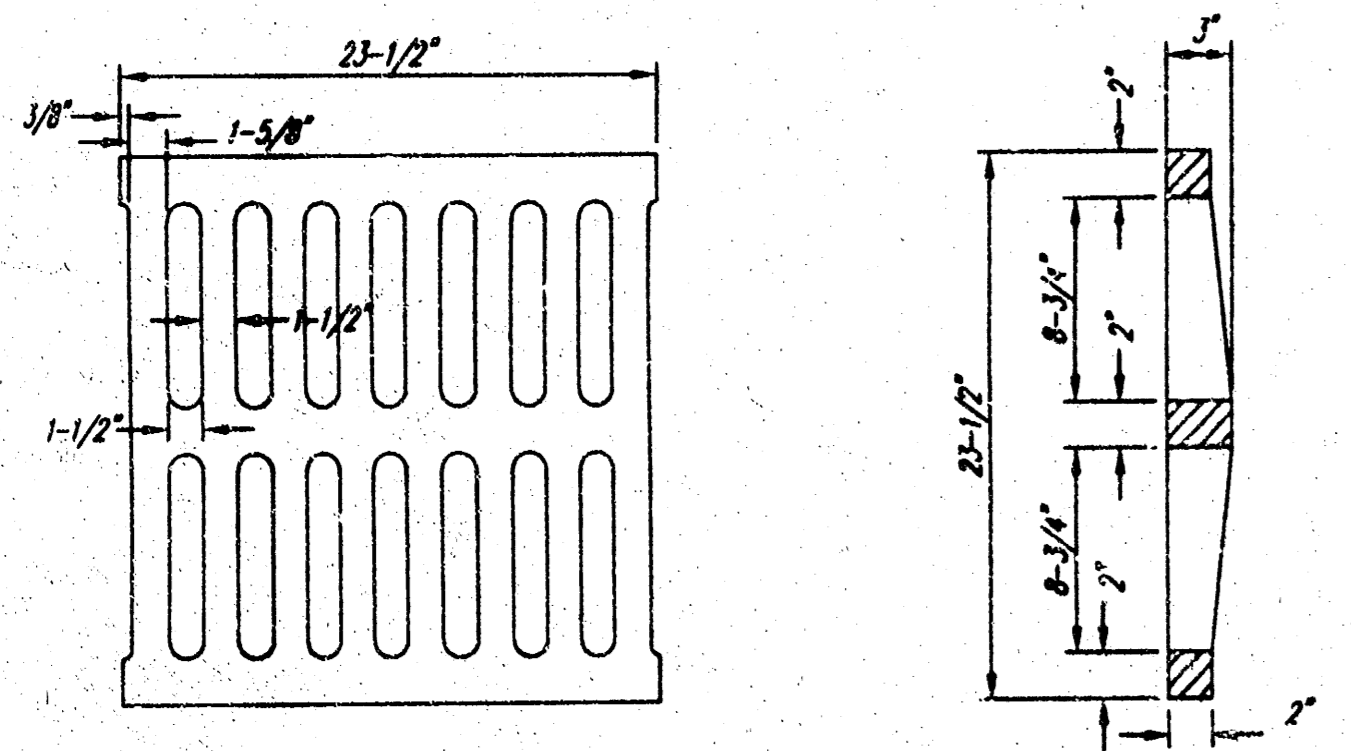
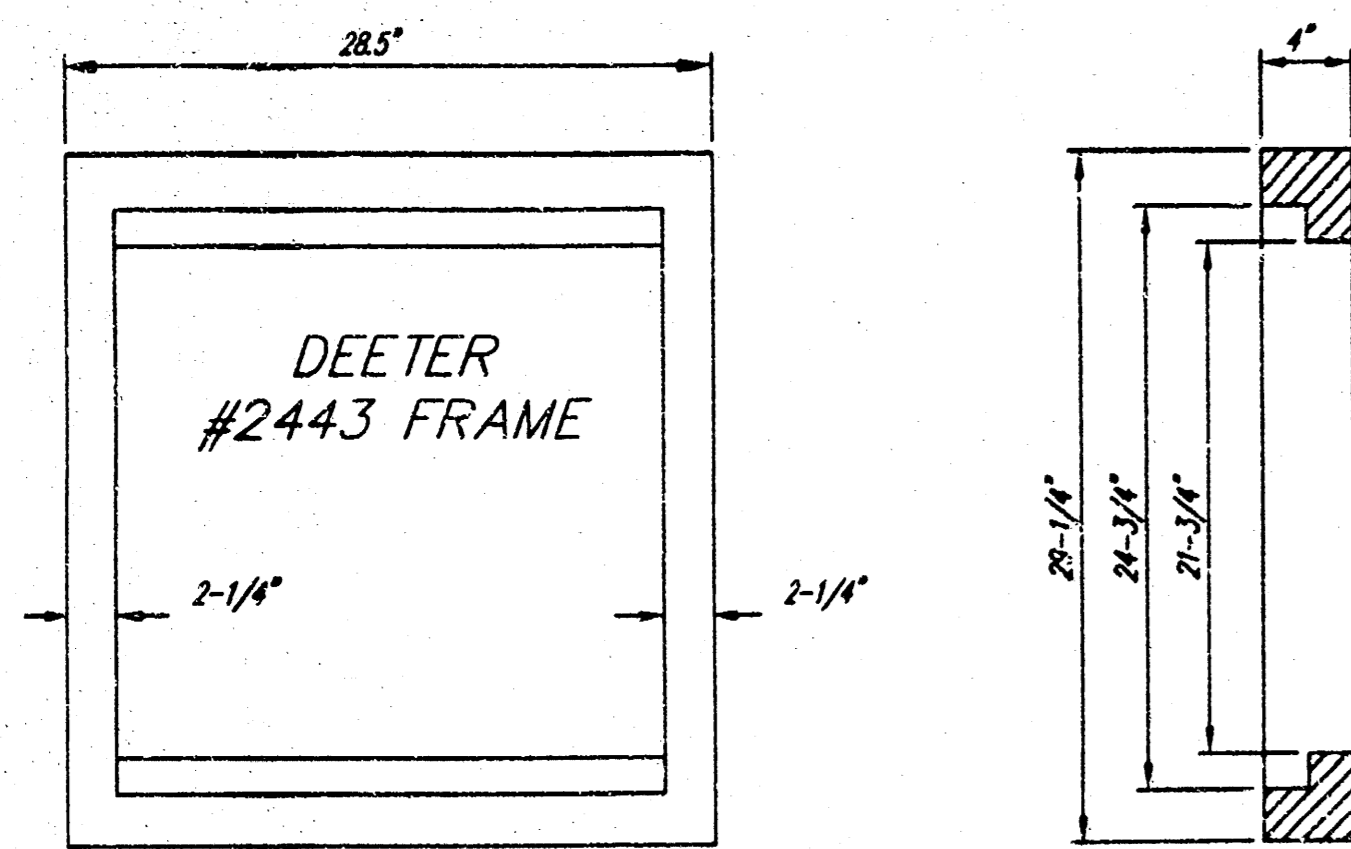
Coleman Middle School  
Storm Sewer  
Wichita, KS

PROJECT NUMBER  
PPS 1252 (607861)

|                         |                  |              |              |            |
|-------------------------|------------------|--------------|--------------|------------|
| kemiller<br>engineering | KEM NO.<br>0204B | FILE<br>SWS1 | DATE<br>5/02 | SHEET<br>2 |
|                         | DESIGN           | DRAWN<br>TR  | REVISED      | OF<br>3    |

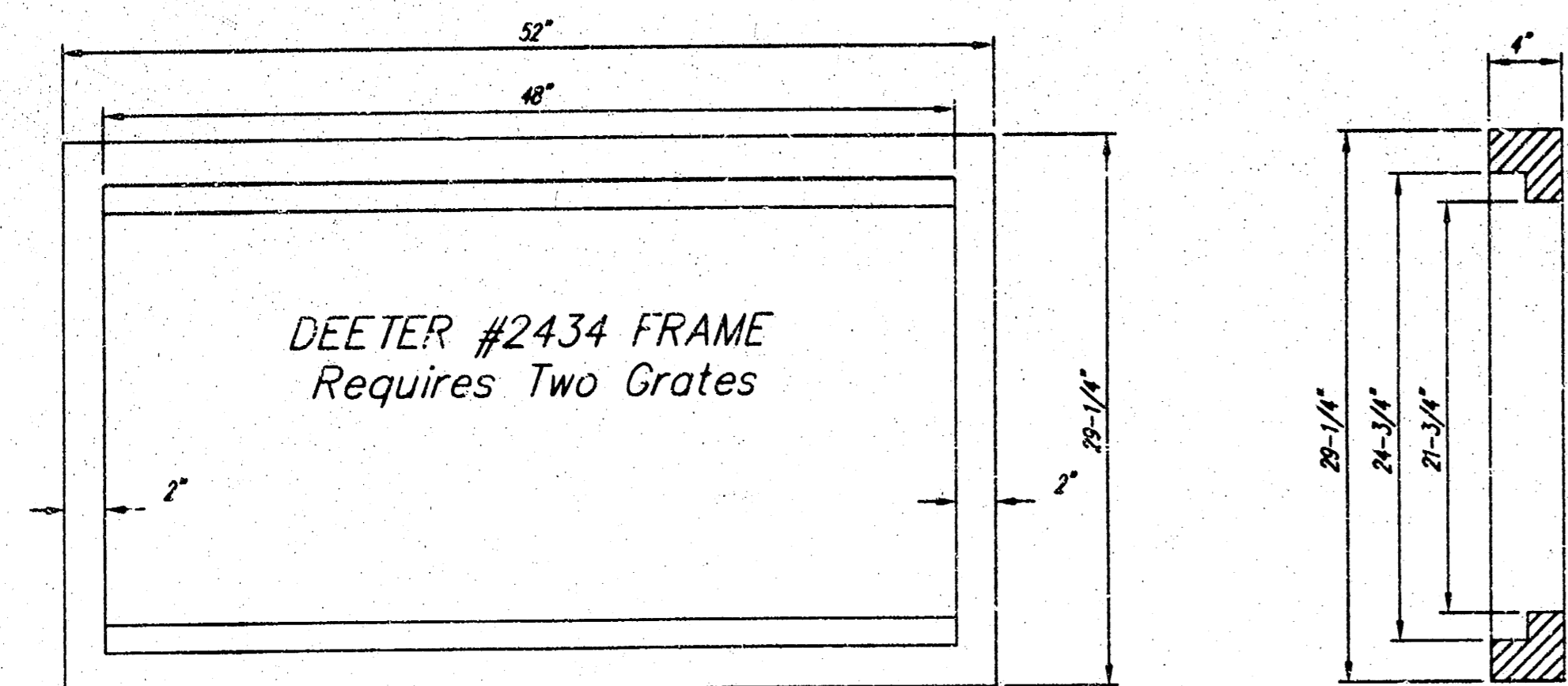
516 S. Market,  
Wichita, KS 67202

316/284-0242



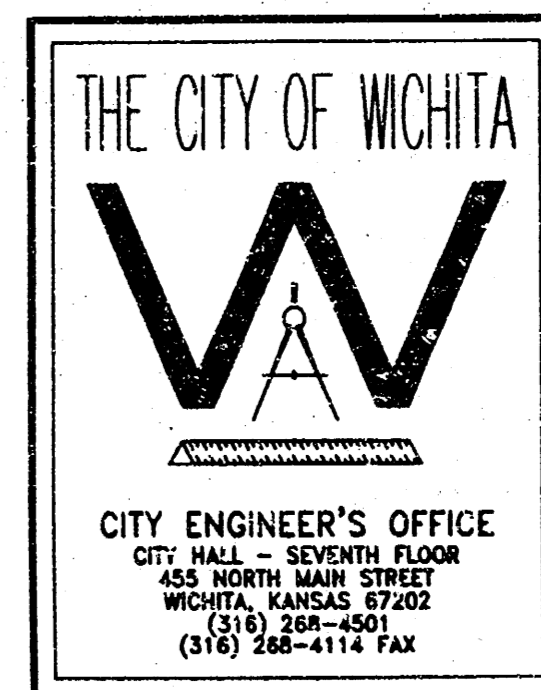
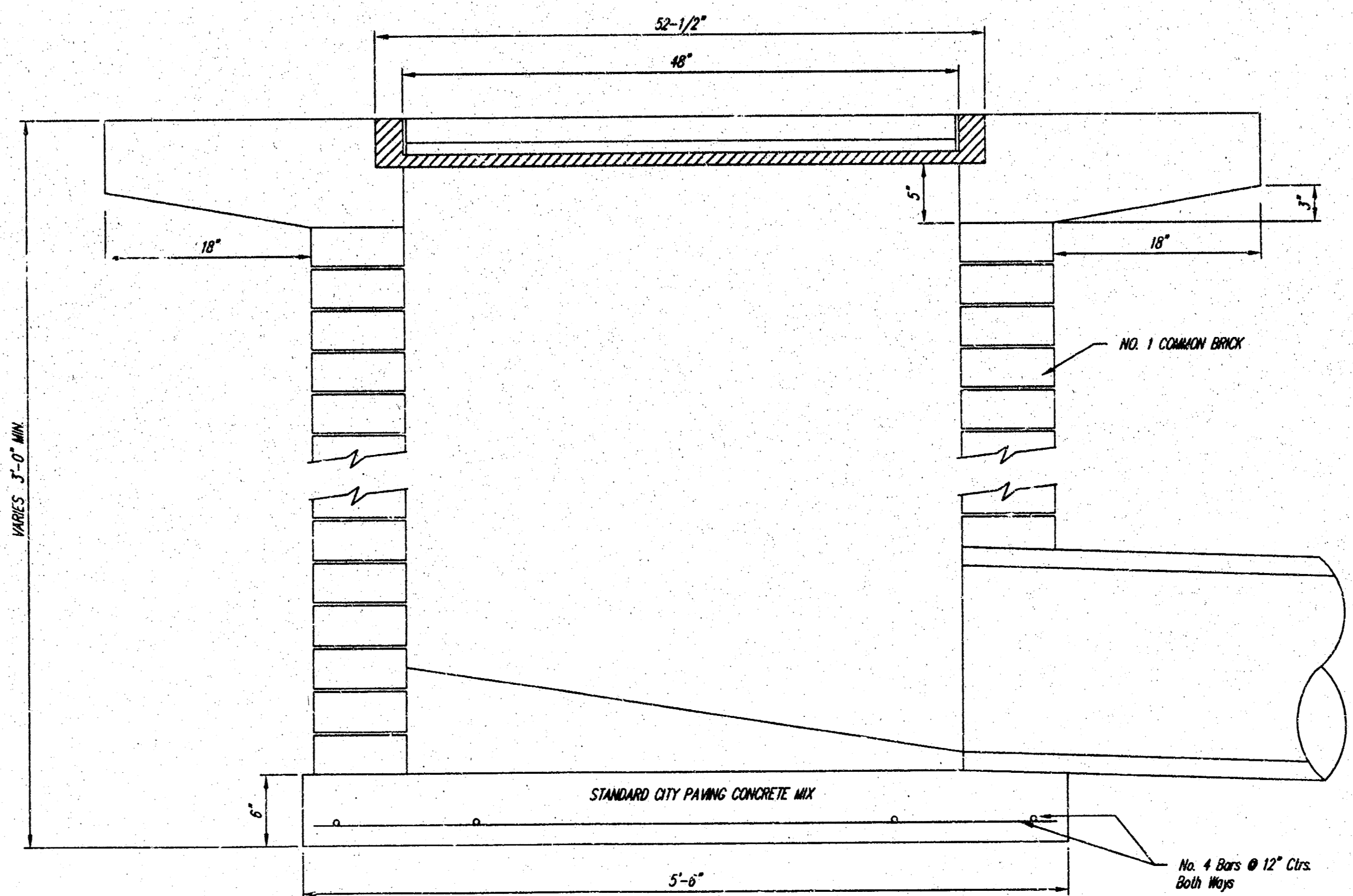
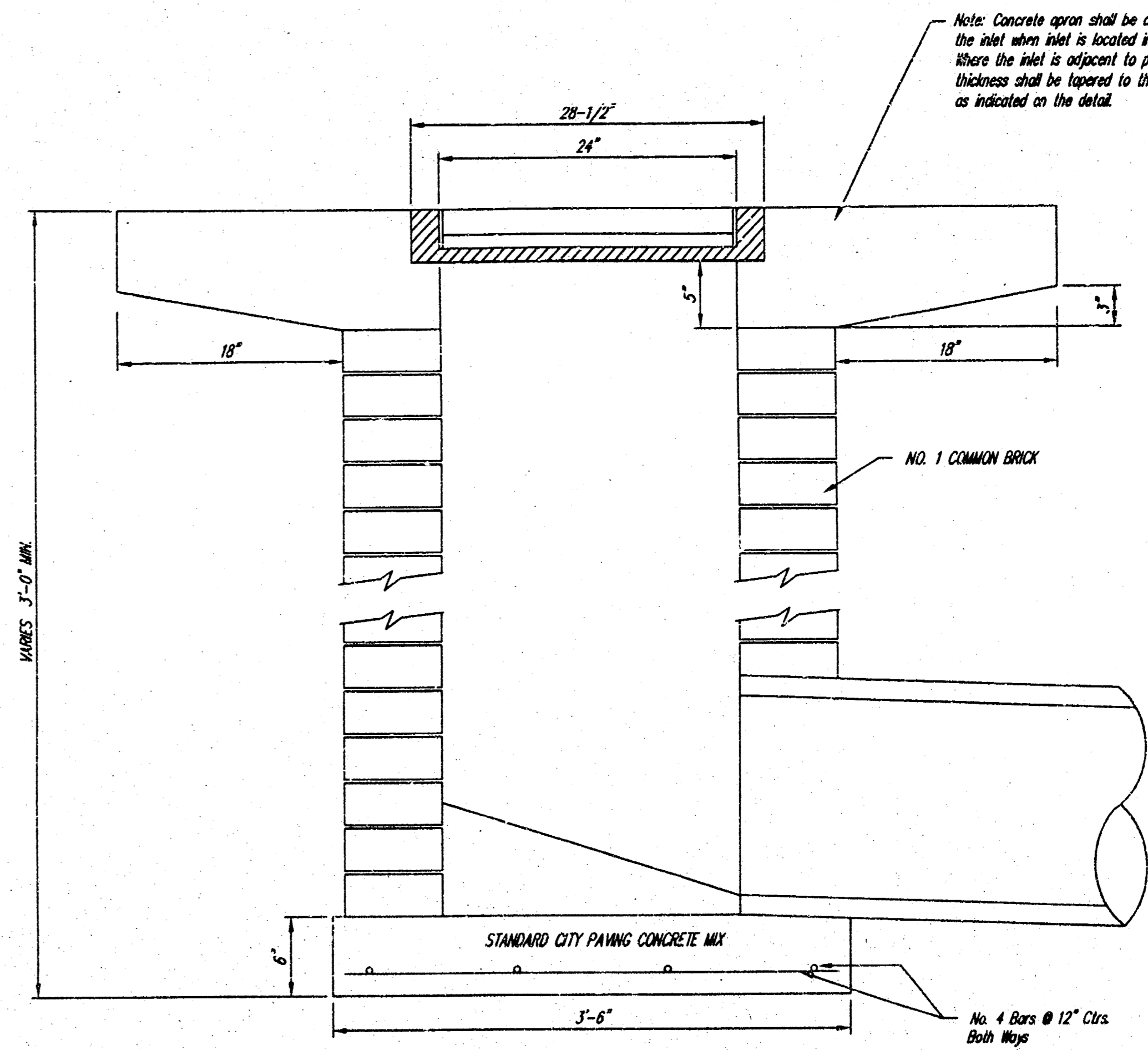
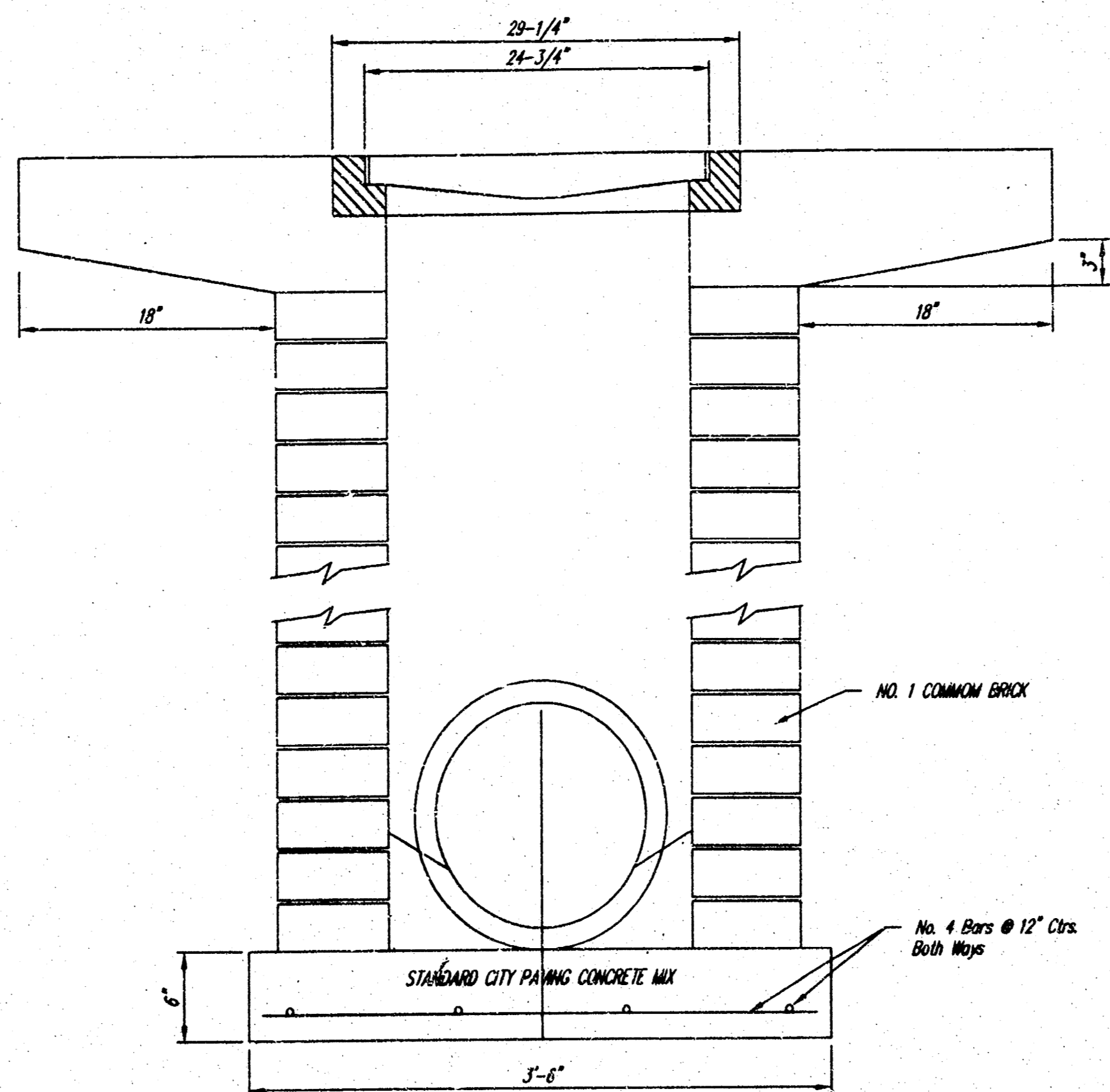
DEETER #2433 GRATE

24" x 24" Frame and Grate Detail



Double 24" x 24" Frame Detail

NOTE: Grates shall be imprinted on the top surface with "CITY OF WICHITA" using letters at least 1" in height. Other marking methods may be approved by the engineer.



|  |            |
|--|------------|
| <b>DROP INLET</b><br>2' X 2' 1/2' X 4' |            |
| M. E. LINDEBAK P.E. - CITY ENGINEER    |            |
| PROJECT NUMBER<br>XXX-XXXXX            | INDEX CODE |
| DATE<br>MAY 02                         | 3 OF 3     |