

**GENERAL NOTES**

- Contractor will be required to provide a minimum advance notice of forty-eight (48) hours to utility companies prior to starting any excavation as follows:

Kansas One-Call 687-2470

The Contractor must notify the following in case of an emergency:

Cox Communications 262-0861  
 Kansas Gas Service 383-8600  
 K.G.E. Electric 383-8600  
 Peoples Natural Gas Company 1-800-303-0357  
 Southwestern Bell Telephone Company 1-800-286-8313  
 City of Wichita Water Department 262-6000  
 City of Wichita Sewer Maintenance 262-6000

- The Contractor shall give all property owners and/or tenants of developed property directly abutting the construction of this project a minimum of ten (10) days advance notice prior to start of construction.
- The Contractor shall be responsible for preserving property irons. The Contractor will be required to re-establish any property irons which are damaged or destroyed by his construction operations. Such irons shall be re-established by a licensed land surveyor in accordance with state laws.
- This project is to be constructed in accordance with City of Wichita Standard Specifications of City Projects, March 1998, and the latest edition of the Policy of Construction on Public Works Projects by Private Contract.
- Any areas within public right of way which are disturbed by construction of this project shall be restored in accordance with Administrative Regulation AR7B.
- Connection of roof drain to storm sewer requires a permit from City of Wichita.
- Not more than one lane of traffic on Hydraulic may be closed at anytime during construction.

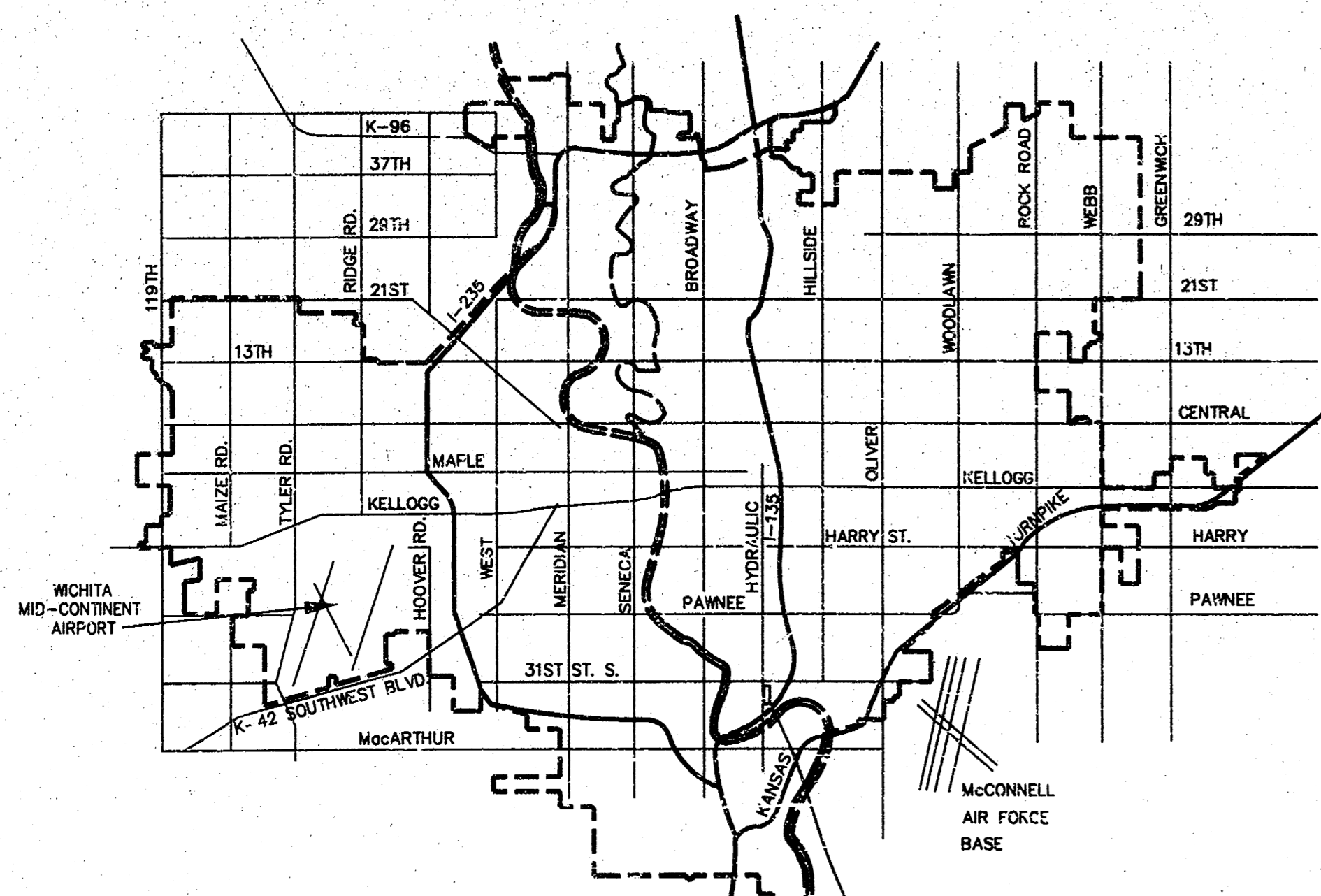
**1255PPS (607861)**

APPROVED AS NOTED  
 BY CITY ENGINEER OF WICHITA

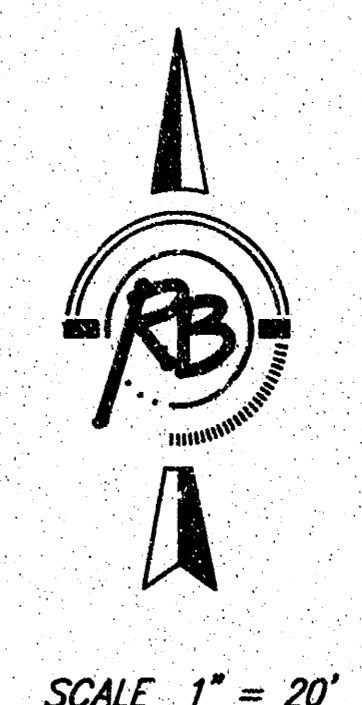
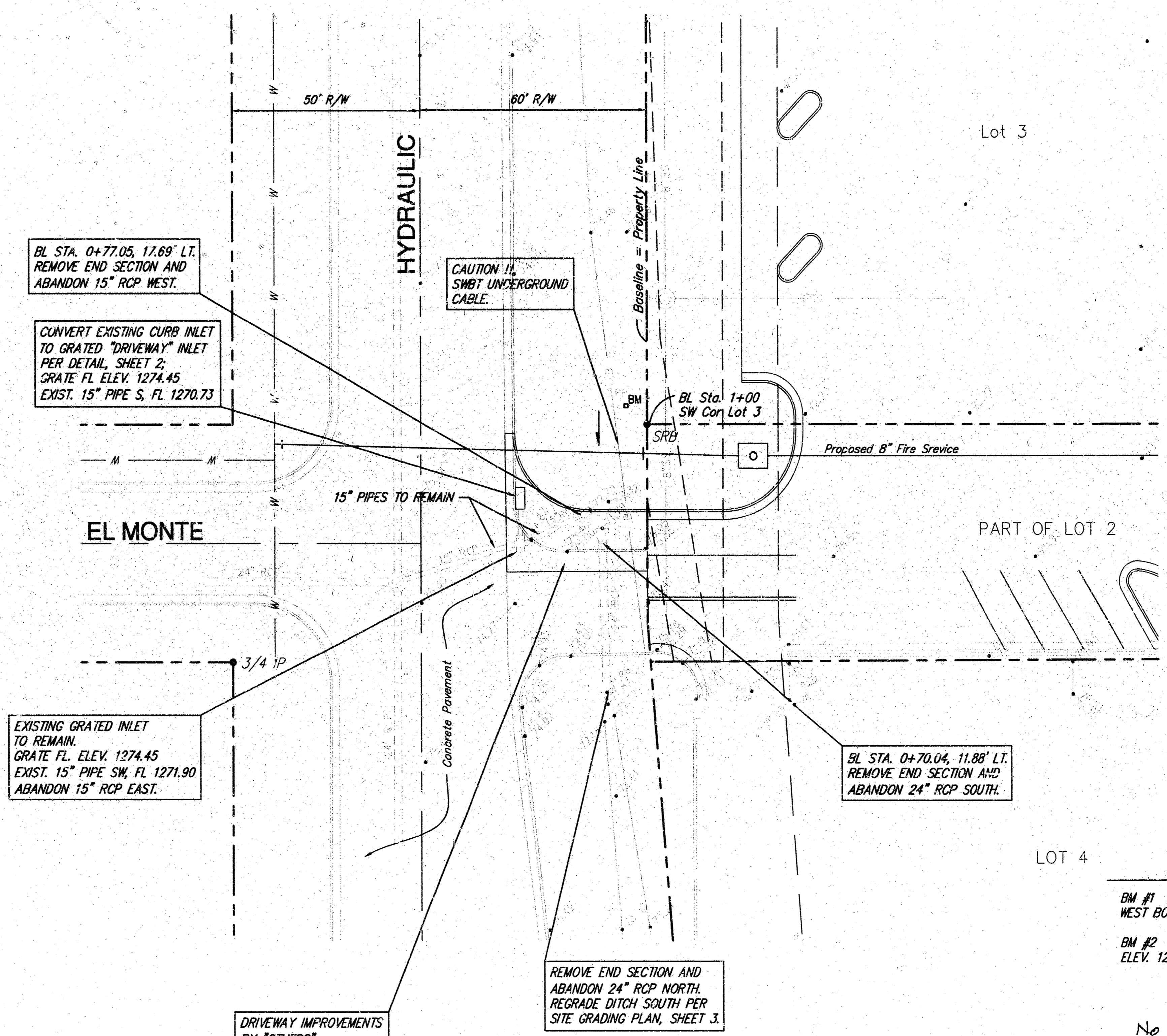
Sanitary Sewers \_\_\_\_\_  
 Storm Sewers VRH 7/2/02  
 Driveway Approaches \_\_\_\_\_  
 Water Mains \_\_\_\_\_  
 Paving \_\_\_\_\_

NOTE TO CONTRACTORS

Inspection and testing for this project are to be provided by a Licensed Consulting Engineering Firm under contract with the Owner/Developer. Said inspection to be in accordance with the City of Wichita standard construction engineering practices and certified by a Licensed Professional Engineer. No work shall be performed in dedicated easements or public right-of-way by the Contractor without such inspection, nor shall any work be commenced without written authorization by the City Engineer.



Project Location  
 VICINITY MAP



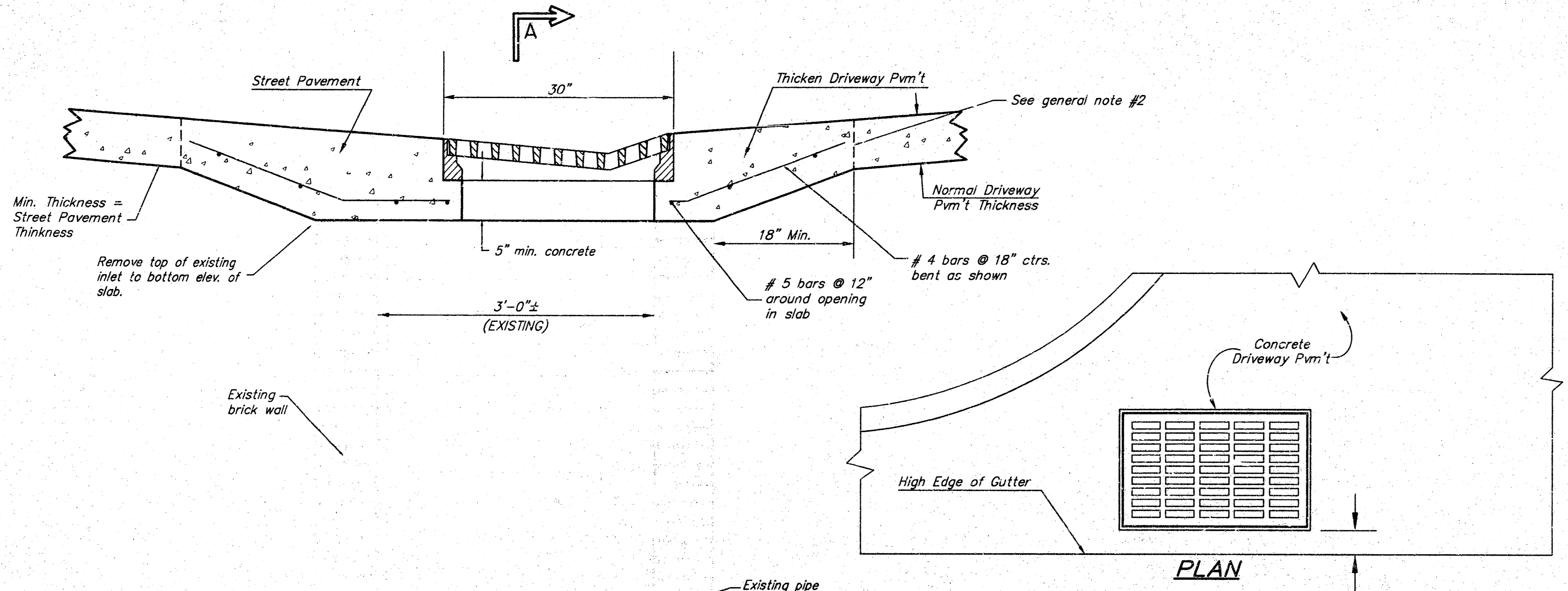
**BENCHMARKS**

- BM #1 C.O.W. DISK EAST SIDE OF CONCRETE BASE TRAFFIC SIGNAL POLE BETWEEN WEST BOUND RAMP HYDRAULIC & 1135. ELEV. 1278.90
- BM #2 RAILROAD SPIKE EAST FACE POWER POLE NORTH & WEST OF SW COR. LOT 3 ELEV. 1273.99

No revision as-built 11-21-03 SCR

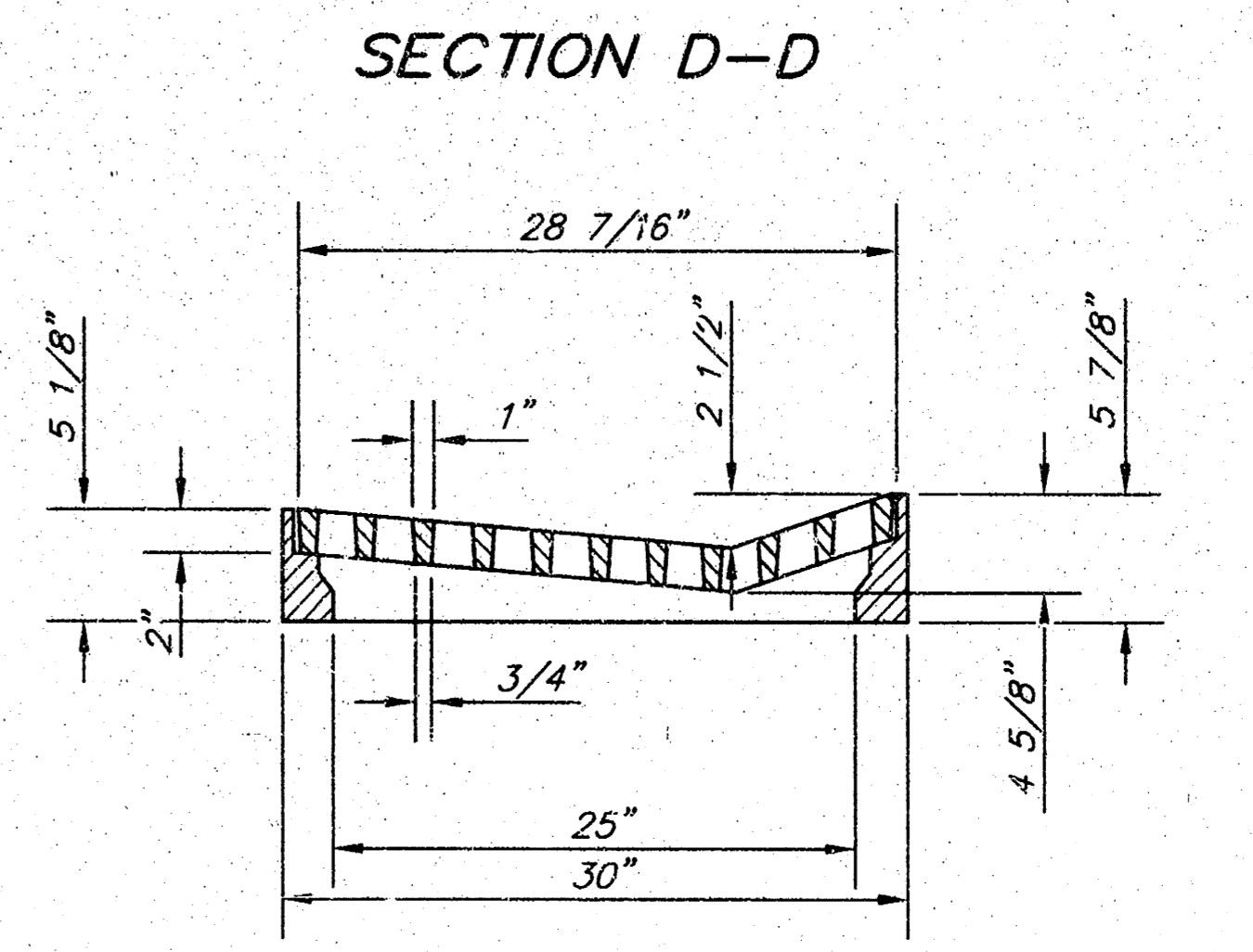
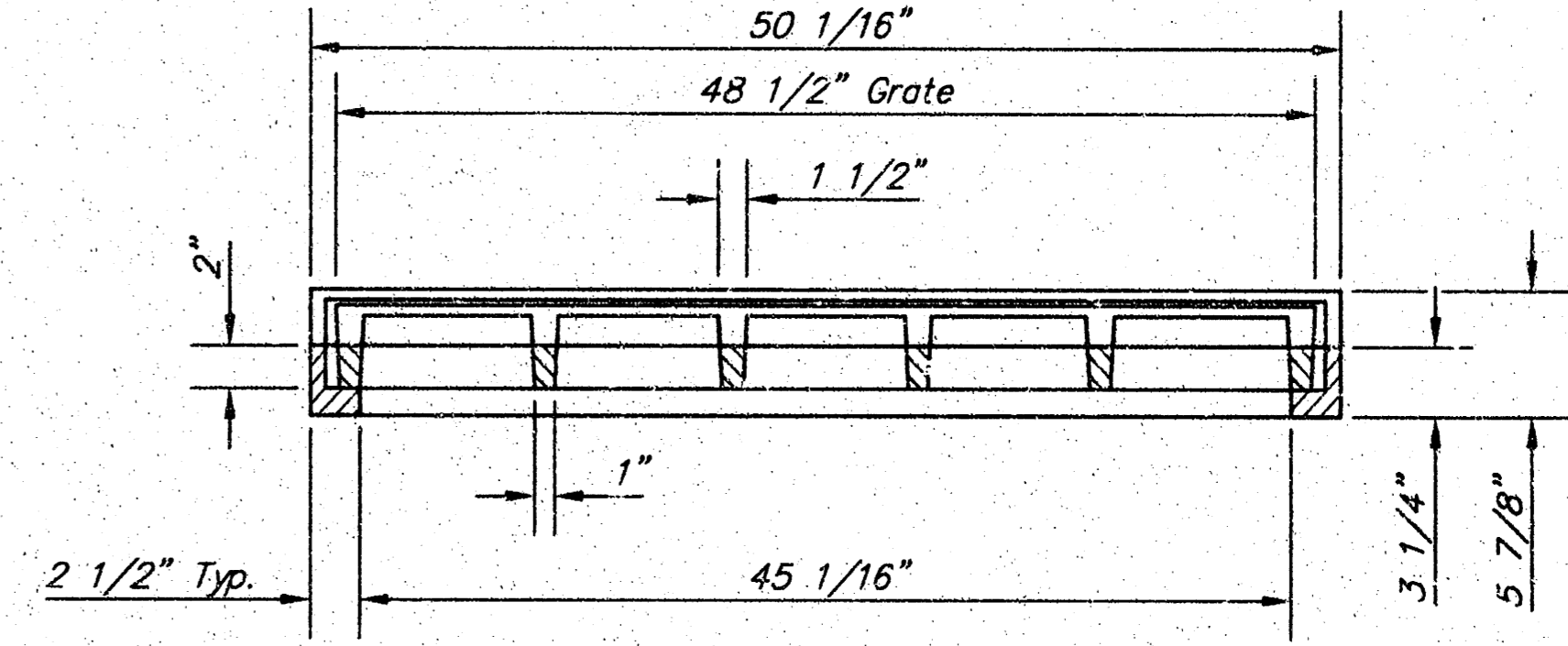
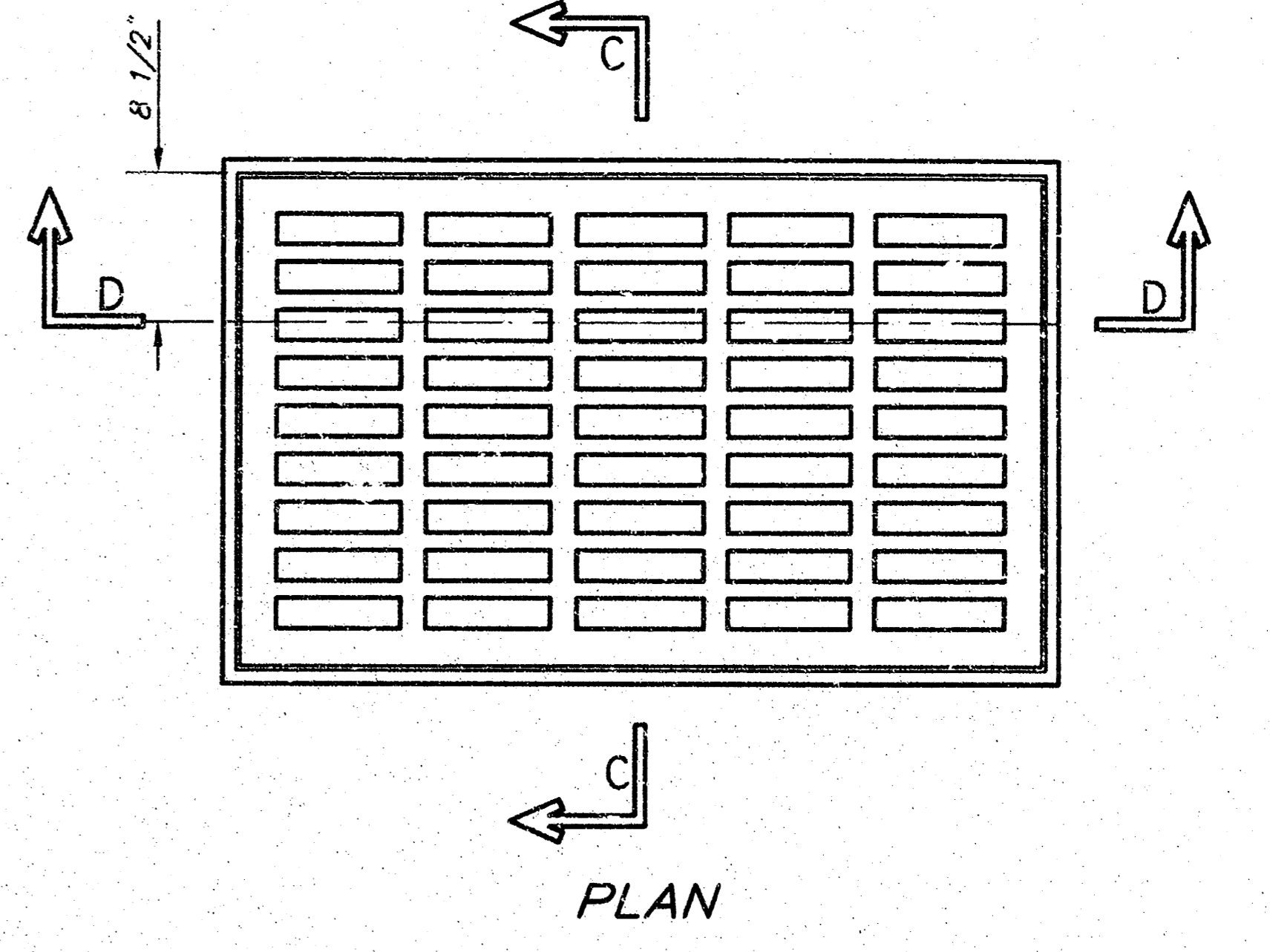
**STORM SEWER IMPROVEMENTS  
 I-135 POWER CENTER ADDITION  
 WICHITA, KANSAS**

 <b>Ruggles &amp; Bohm, P.A.</b> Engineering, Surveying, Land Planning 924 North Main Wichita, Kansas 67203 www.rbkansas.com (316) 264-8008 (316) 264-4621 fax E-mail: info@rbkansas.com	DESIGN TCR	SHEET 1 OF 3
	DRAWN RA	
REVIEW		
UTILITY		
DRAWING'S FILE storm sewer	PROJECT NUMBER 1255PPS (607861)	DATE July 2, 2002

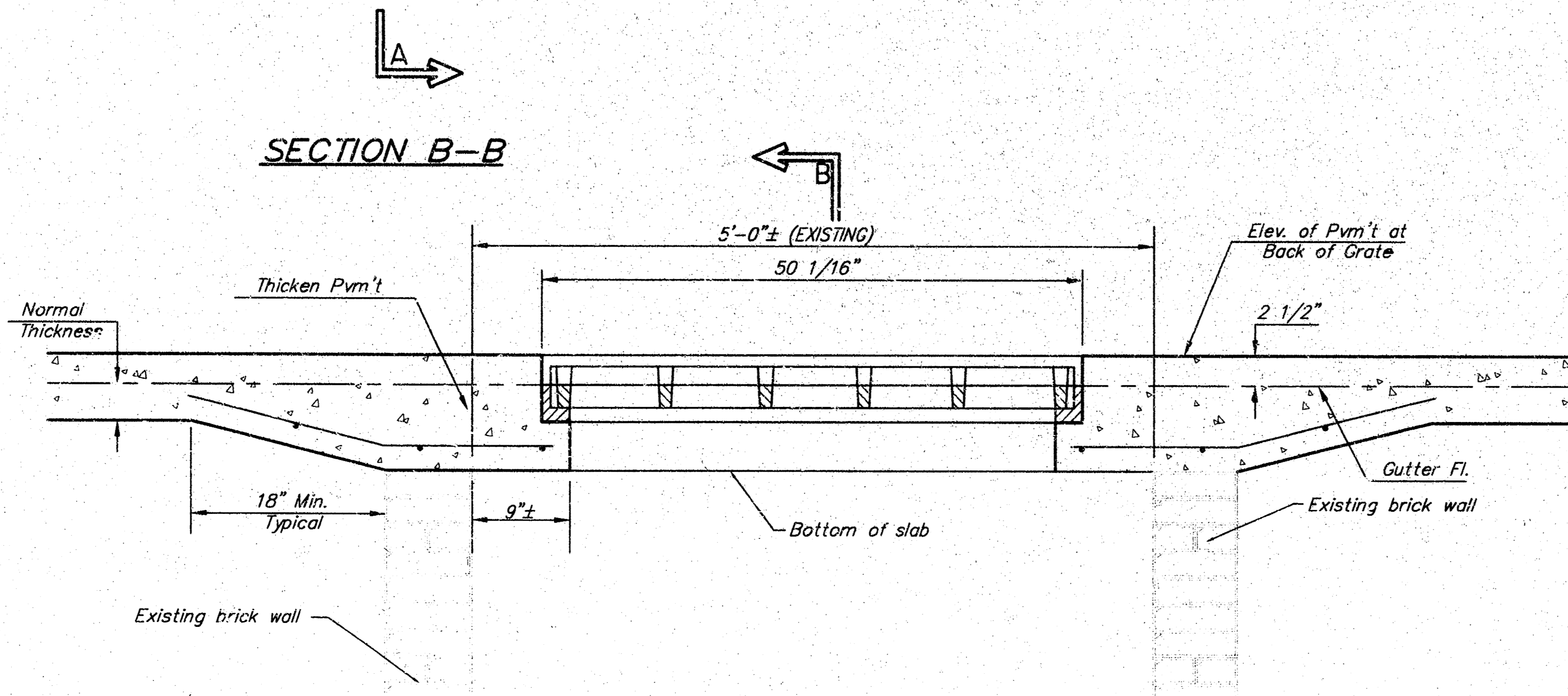


**GENERAL NOTES**

1. Inlet Frames and Grates to be two (2) Deeter #2095 or approved equal.
2. At contractor's option, concrete slab top may be precast.

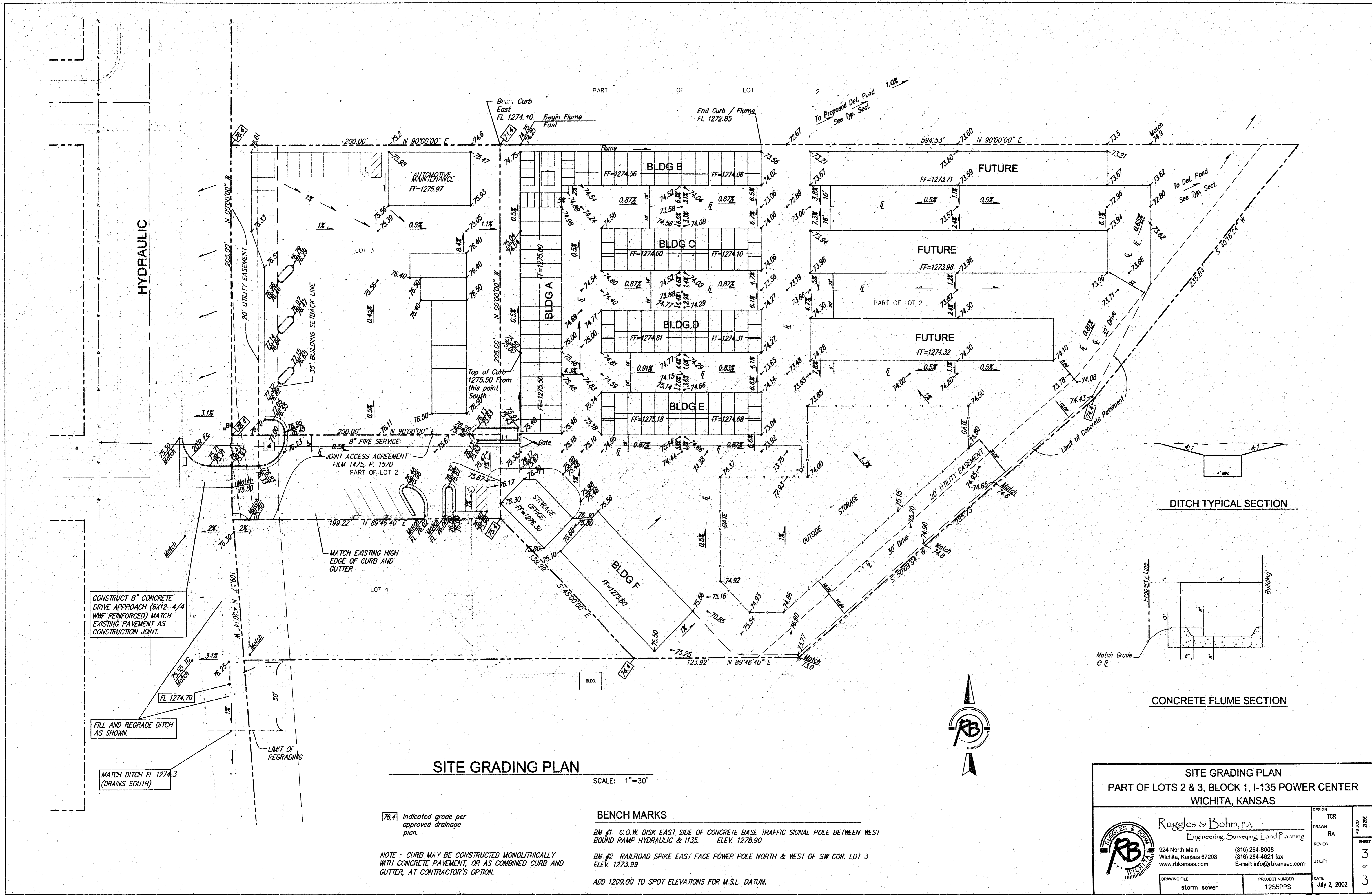


**DEETER #2095 FRAME & GRATE**  
TOTAL WEIGHT: 705 lbs.  
(2 Each Required)



**SECTION A-A**  
(EXISTING TYPE 1A CURB INLET)

<b>STORM SEWER IMPROVEMENTS GRADED DRIVEWAY INLET MODIFICATIONS WICHITA, KANSAS</b>			
 <b>Ruggles &amp; Bohm, P.A.</b> Engineering, Surveying, Land Planning 924 North Main Wichita, Kansas 67203 www.rbkansas.com (316) 264-8008 (316) 264-4621 fax E-mail: info@rbkansas.com	DESIGN	TCR	SHEET 2 OF 3
	DRAWN	RA	
	REVIEW		
DRAWING FILE	PROJECT NUMBER	DATE	
storm sewer	1255PPS (607861)	July 2, 2002	



HYDRAULIC

CONSTRUCT 8" CONCRETE DRIVE APPROACH (6X12-4/4 W/MF REINFORCED) MATCH EXISTING PAVEMENT AS CONSTRUCTION JOINT.

FILL AND REGRADE DITCH AS SHOWN.

MATCH DITCH FL 1274.3 (DRAINS SOUTH)

JOINT ACCESS AGREEMENT  
FILM 1475, P. 1570  
PART OF LOT 2

**SITE GRADING PLAN**

SCALE: 1"=30'

76.4 Indicated grade per approved drainage plan.

NOTE: CURB MAY BE CONSTRUCTED MONOLITHICALLY WITH CONCRETE PAVEMENT, OR AS COMBINED CURB AND GUTTER, AT CONTRACTOR'S OPTION.

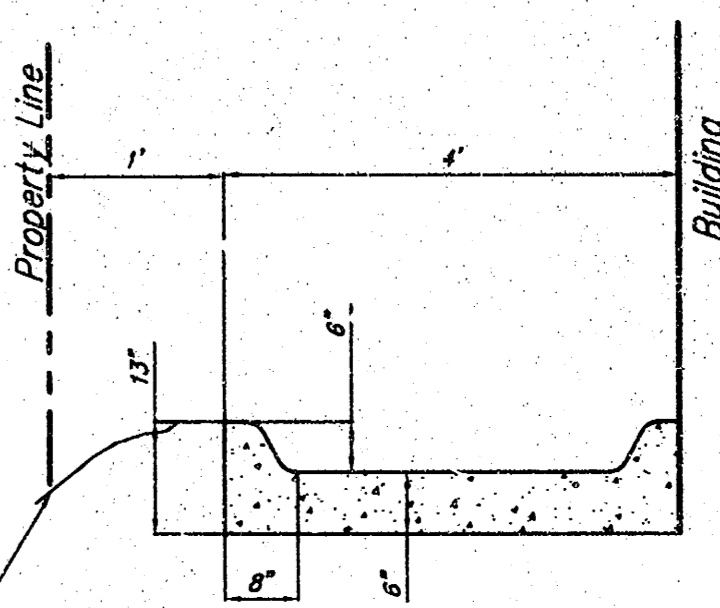
**BENCH MARKS**

BM #1 C.O.W. DISK EAST SIDE OF CONCRETE BASE TRAFFIC SIGNAL POLE BETWEEN WEST BOUND RAMP HYDRAULIC & 1135. ELEV. 1278.90

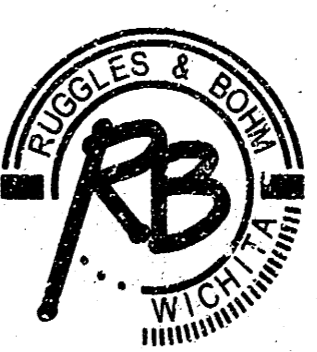
BM #2 RAILROAD SPIKE EAST FACE POWER POLE NORTH & WEST OF SW COR. LOT 3 ELEV. 1273.99

ADD 1200.00 TO SPOT ELEVATIONS FOR M.S.L. DATUM.

DITCH TYPICAL SECTION



CONCRETE FLUME SECTION

<b>SITE GRADING PLAN</b>		DESIGN TCR	
PART OF LOTS 2 & 3, BLOCK 1, I-135 POWER CENTER		DRAWN RA	
WICHITA, KANSAS		REVIEW	
 <b>Ruggles &amp; Bohm, P.A.</b> Engineering, Surveying, Land Planning		UTILITY DATE July 2, 2002	
924 North Main Wichita, Kansas 67203 www.rbkansas.com		(316) 264-8008 (316) 264-4621 fax E-mail: info@rbkansas.com	
DRAWING FILE storm sewer		PROJECT NUMBER 1255PPS	
SHEET 3		OF 3	