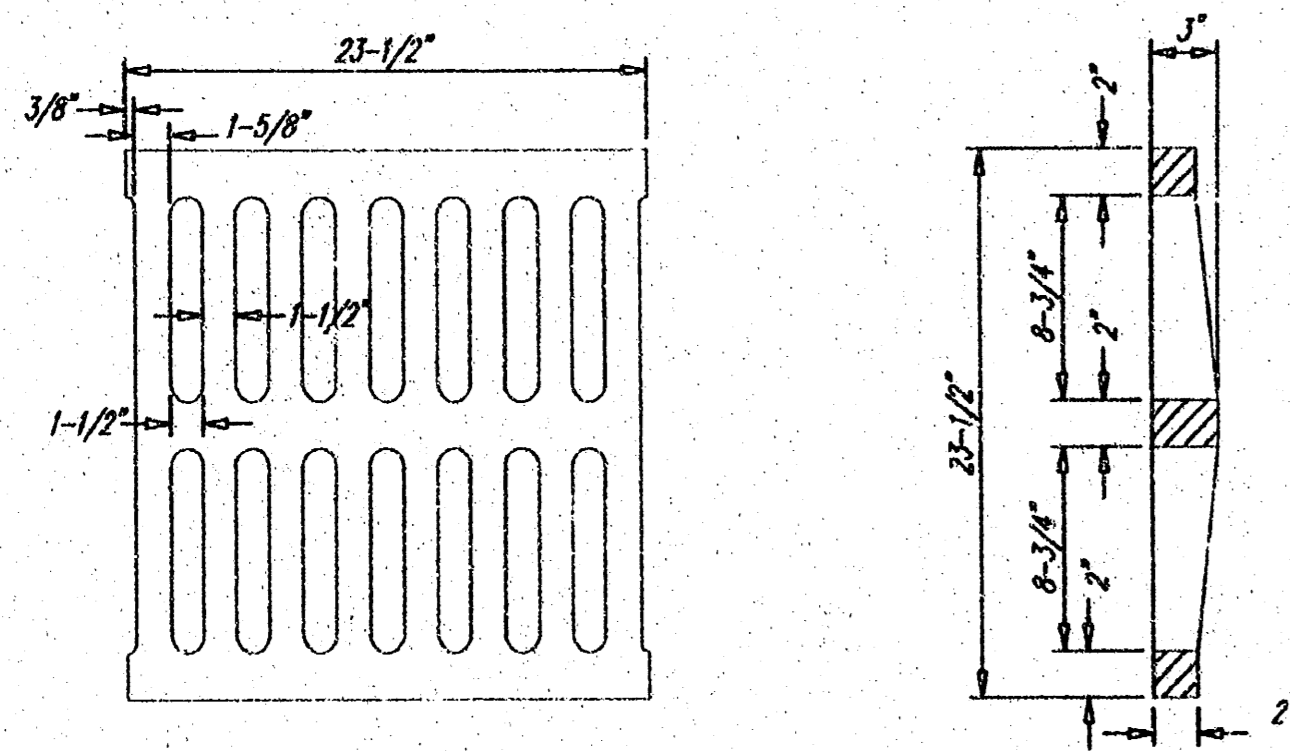
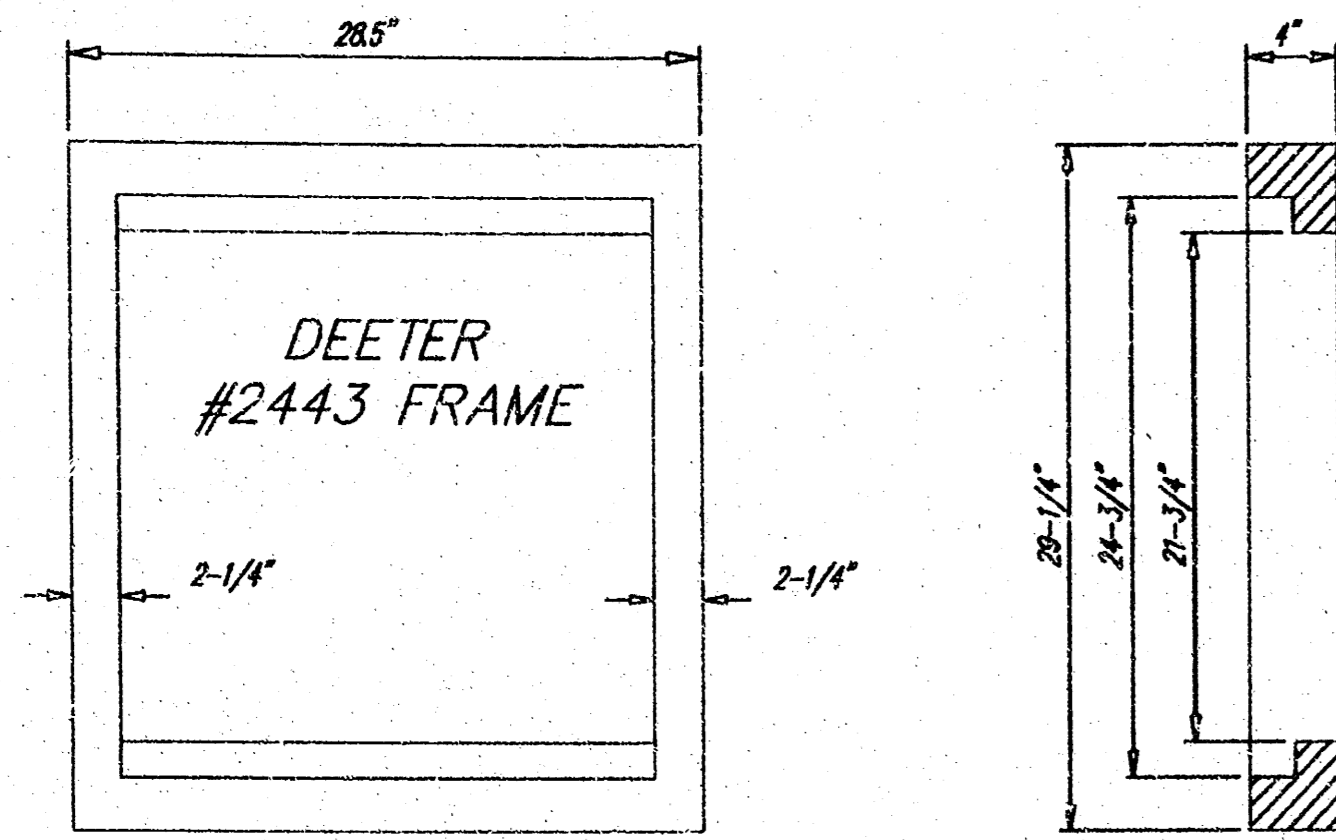


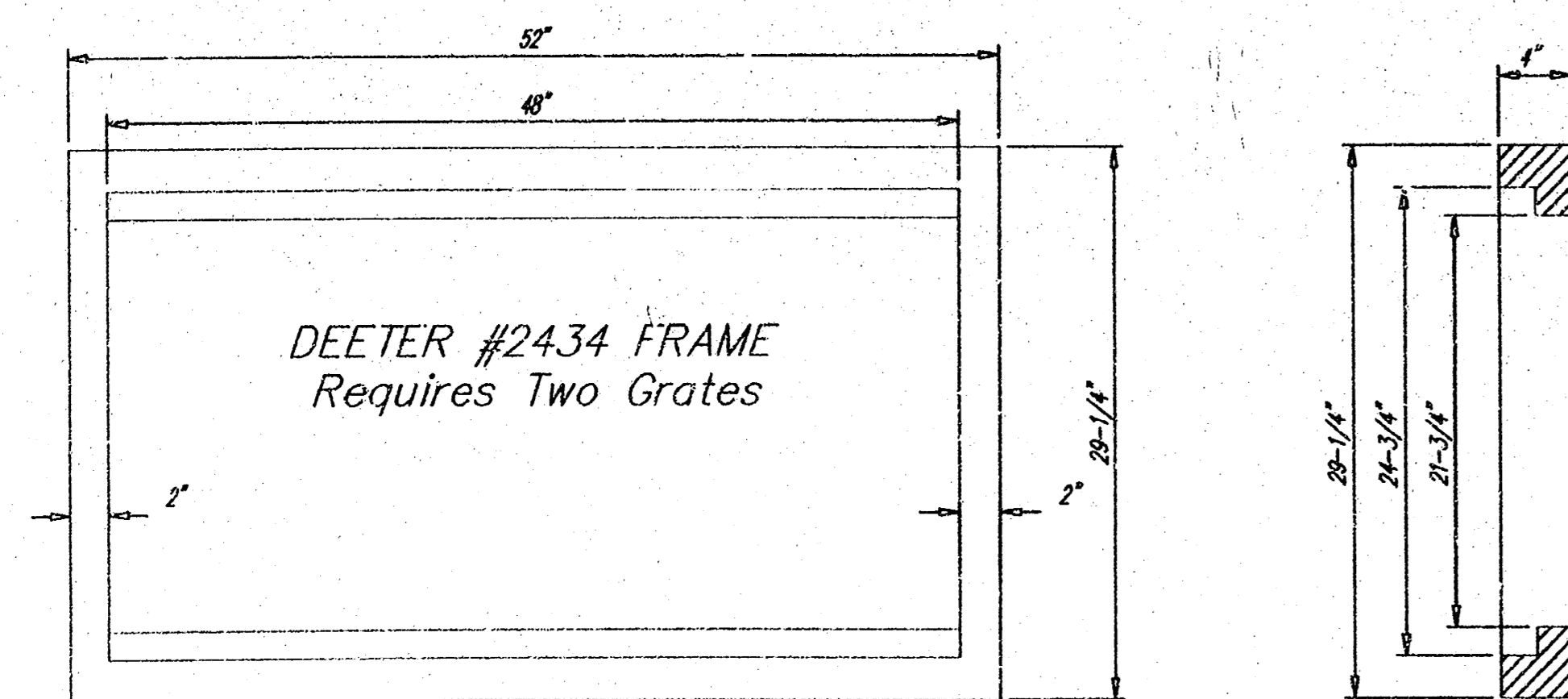
Drawing.dwg Mod Oct 20 09:37:35 2004 JMU - Poe & Associates, Inc.



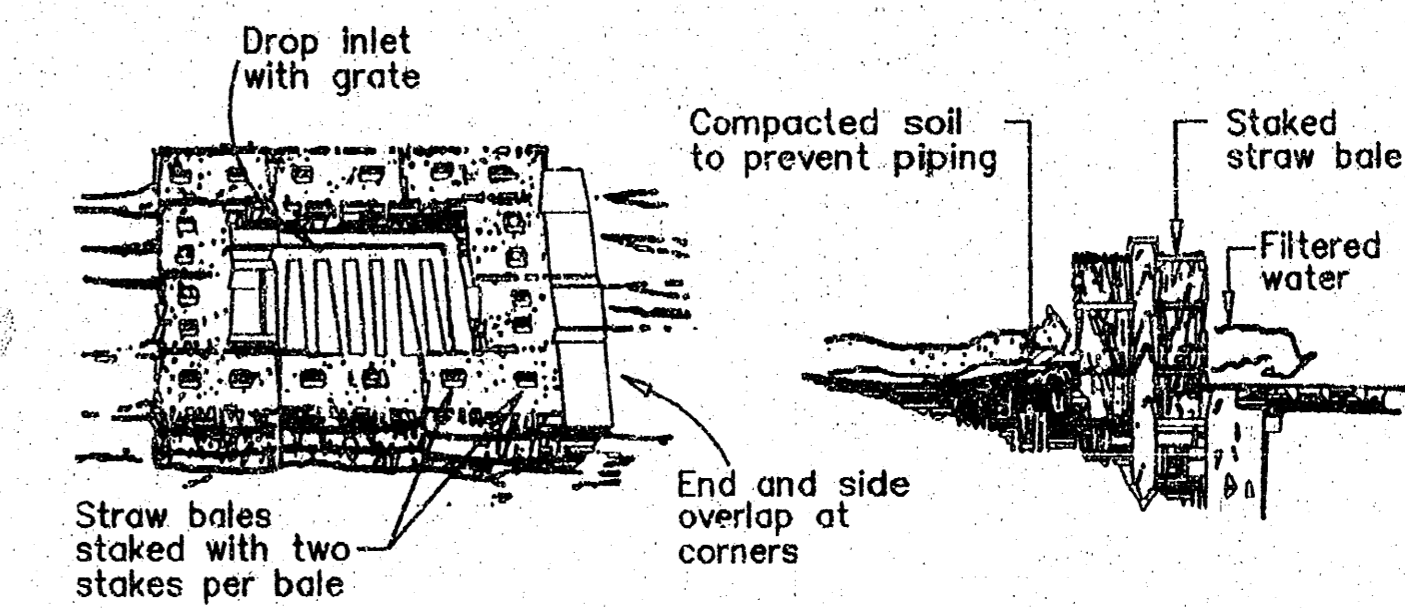
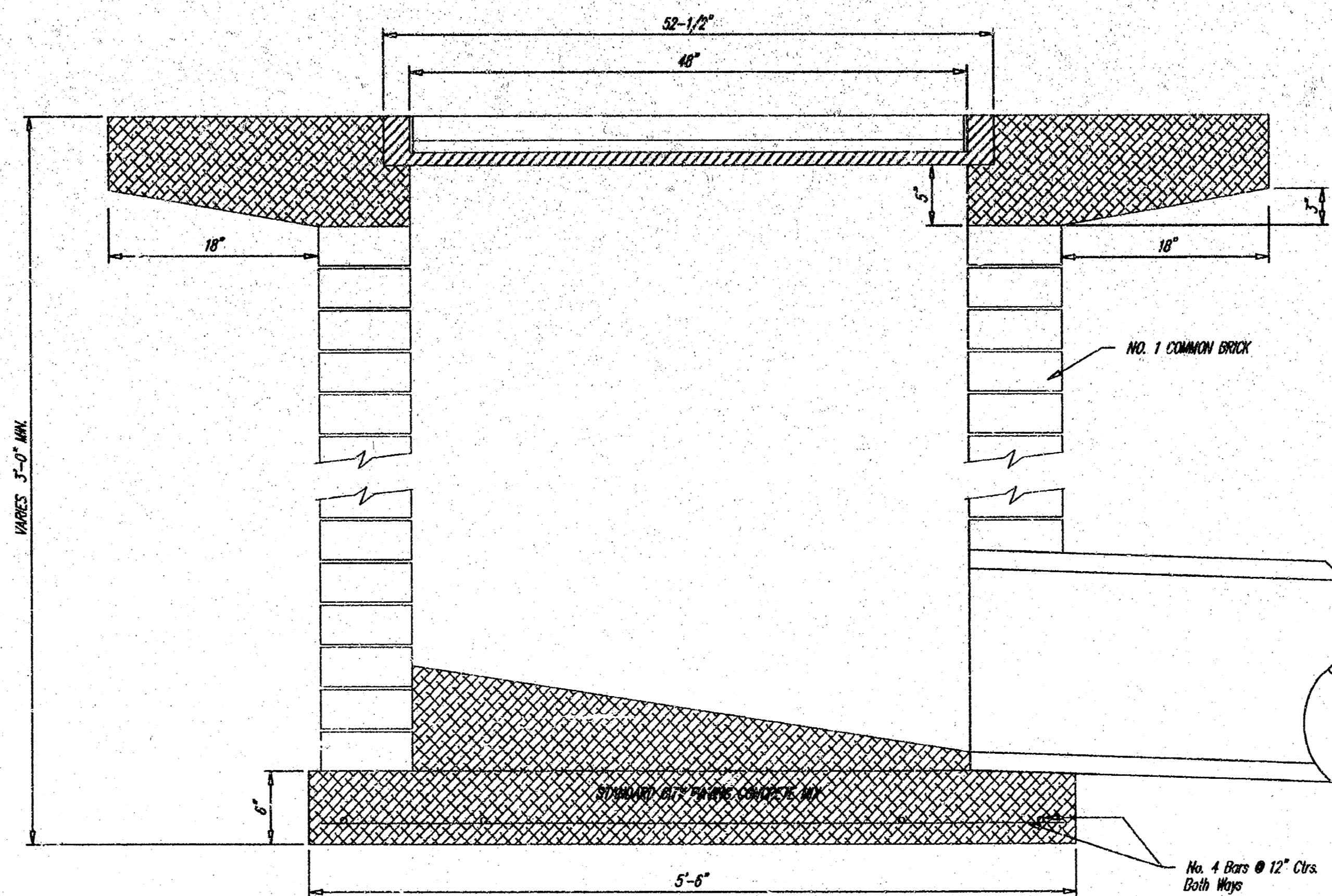
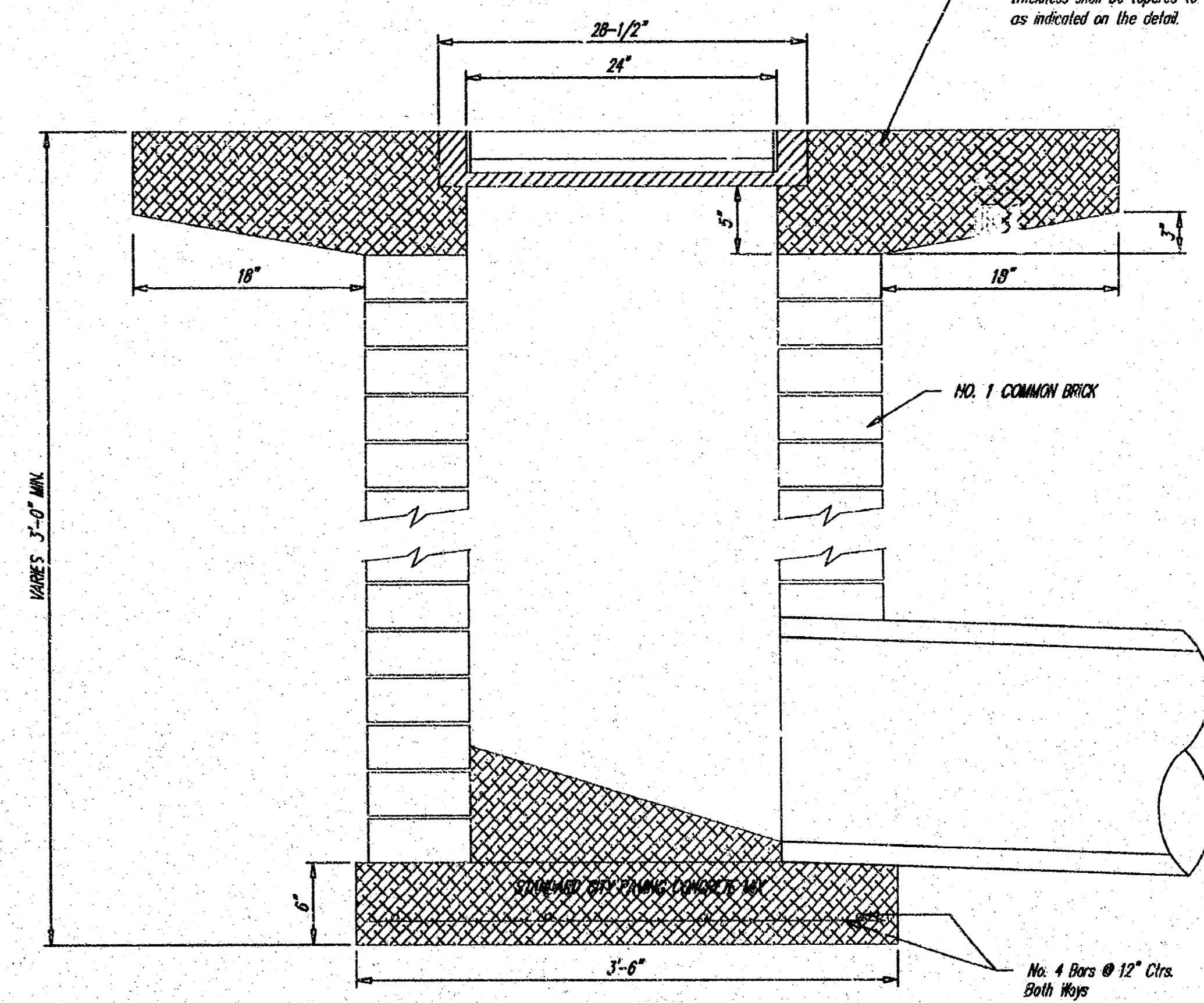
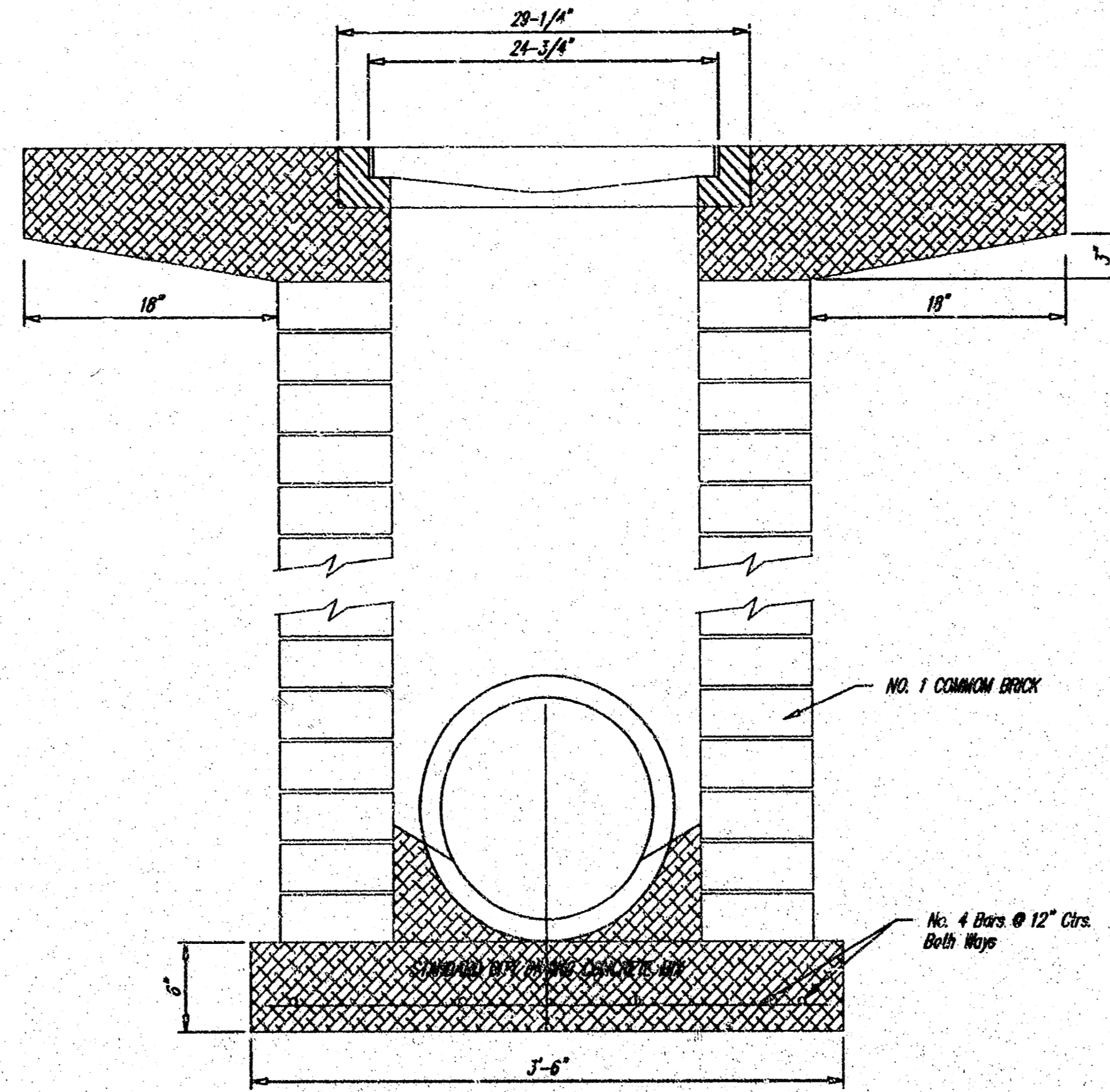
DEETER #2433 GRATE

24" x 24" Frame and Grate Detail

NOTE: Grates shall be imprinted on the top surface with "CITY OF WICHITA" using letters at least 1" in height. Other marking methods may be approved by the engineer.



Double 24" x 24" Frame Detail



HAY BALE SEDIMENT BARRIER

MAPLE DUNES ADDITION

<p>THE CITY OF WICHITA</p> <p>CITY ENGINEER'S OFFICE CITY HALL - SEVENTH FLOOR 405 NORTH MAIN STREET WICHITA, KANSAS 67202 (316) 268-4801 (316) 268-4114 FAX</p>	<p>HAY BALE BARRIER & DROP INLET 2' X 2' 1/2' X 4'</p>	
	<p>M. E. LINDEBAK P.E. - CITY ENGINEER</p>	
<p>PROJECT NUMBER</p>	<p>INDEX CODE</p>	
<p>DATE Sept. 97</p>	<p>SHEET 3 OF 3</p>	