

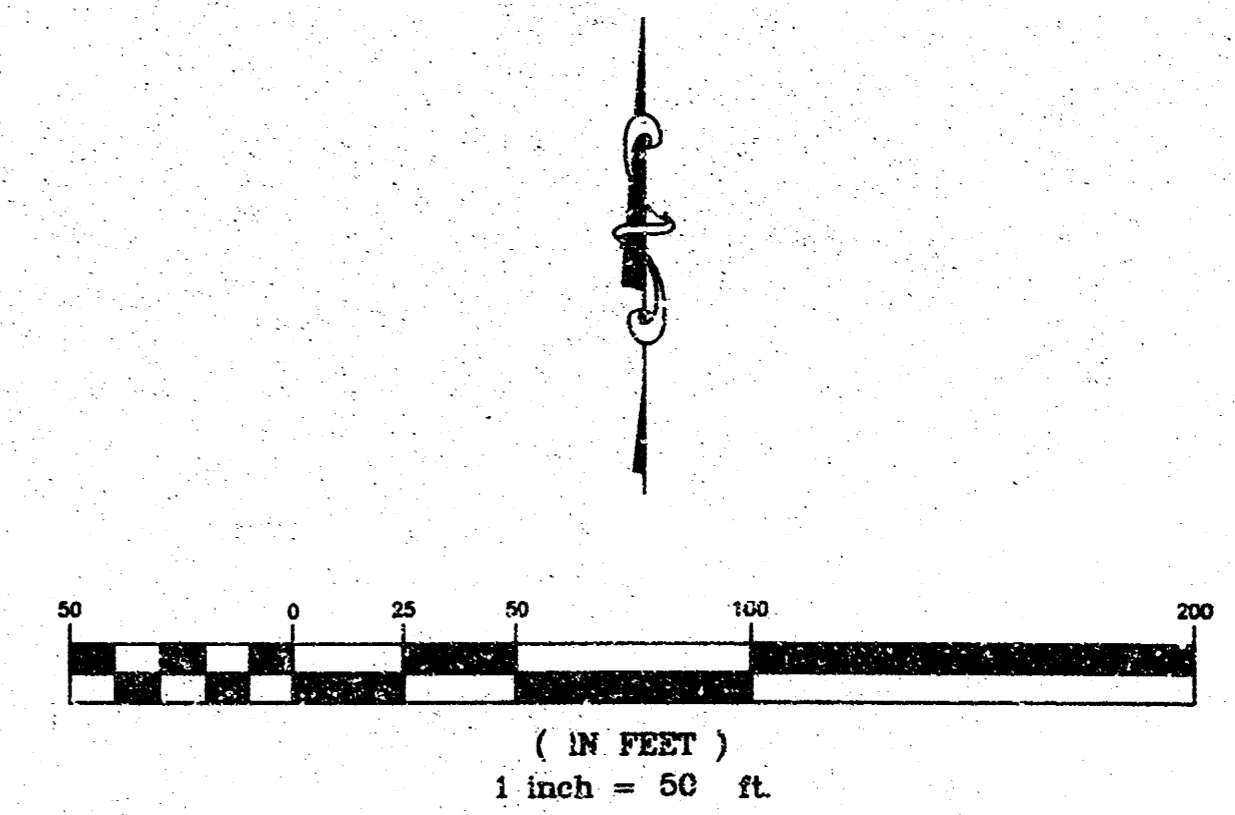
INDEX OF SHEETS	
1	Cover Sheet
2	LINE 1
3	LINE 2
4	Details

**GENERAL NOTES**

- Contractor will be required to provide notice to utility companies a minimum of twenty-four (24) hours prior to any excavation, as follows:  
 Kansas One-Call 687-2470  
 The Contractor must notify the following in case of an emergency:  
 Cablevision 262-4270  
 or 263-2061  
 K.P.L. Gas Service Company 383-8650  
 Kansas Gas & Electric Company 383-8600  
 Peoples Natural Gas 262-4270  
 Southwestern Bell Telephone Company 1-571-2611  
 City of Wichita Water Department 268-4908  
 City of Wichita Sewer Department 268-4071  
 Kansas Gas Service 832-3168  
 or 832-3167  
 Peoples Natural Gas 942-8811  
 or 1-800-303-0357
- Exist. utilities and their locations, as shown on the plans, represent the best information obtainable for design. Location information has been obtained from the various utility companies and is either from company record drawings or company-provided field locations. The Contractor will be required to work around existing utilities which do not conflict with proposed construction.
- The Contractor to verify utility locations prior to construction of this project.
- Utility service and installation shall be coordinated with the respective utility owners. Contacts are:  
 Kansas Gas Service James Stoltz 831-3122  
 Kansas Gas & Electric Russ Chitwood 261-6251  
 Peoples Natural Gas John Stark 942-8811  
 Wichita Water Paul Bryant 268-4555  
 Steve Palmer 268-4908  
 Southwestern Bell Jim Tobin 268-2759  
 Multimedia Cablevision Mark Anaya 262-4270
- All lawn/turf areas disturbed by construction of proposed improvements shall be restored with sod. All sodding work shall be in accordance with the City of Wichita standard specifications and the City of Wichita administrative regulation No. AR78 which governs cleanup and replacement following construction. All costs for this work shall be subsidiary to the lump sum price bid for "Site Restoration."
- Traffic affected by the construction of this project shall be handled in accordance with the latest edition of the Manual on Uniform Traffic Control Devices.
- All commercial signs to be moved by others prior to construction.
- Properties within the project may have underground irrigation systems (lawn sprinklers) which conflict with the new construction. Contractor shall remove such components as needed during construction of the project. The irrigation system shall be reinstalled in like kind before project completion. Any irrigation system modifications required because of project improvements shall be coordinated with the property owner. Portions of underground irrigation systems not in conflict with construction shall be protected from damage and shall remain in place. All work related to underground irrigation/sprinklers shall be subsidiary to Site Restoration.
- Contractor shall not start work on the project until the project inspector is assigned to the project and is present on the site. Any work done without inspection will be required to be uncovered for inspection.
- The contractor shall be responsible for preserving property irons. The contractor will be required to re-establish any property irons which are damaged or destroyed by his construction operations. Such irons shall be re-established by a licensed land surveyor in accordance with state laws.

# IHOP Lot 7 Block A - One Kellogg Place 2nd Addn. STORM SEWER IMPROVEMENT

Project Number  
1279 PPS (607861)  
CITY OF WICHITA, KANSAS  
Neil D. Cable, P.E., City Engineer

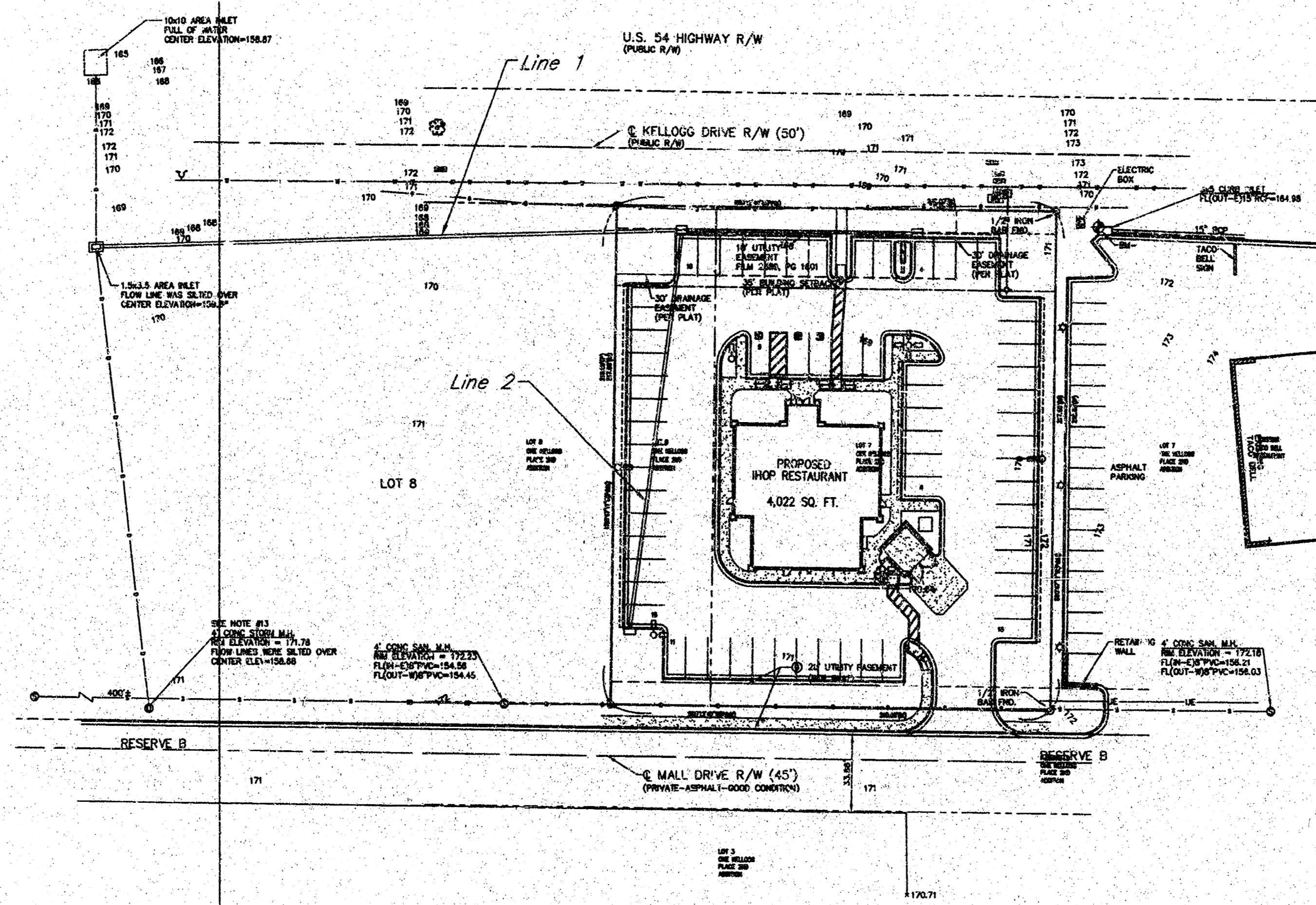


APPROVED AS NOTED

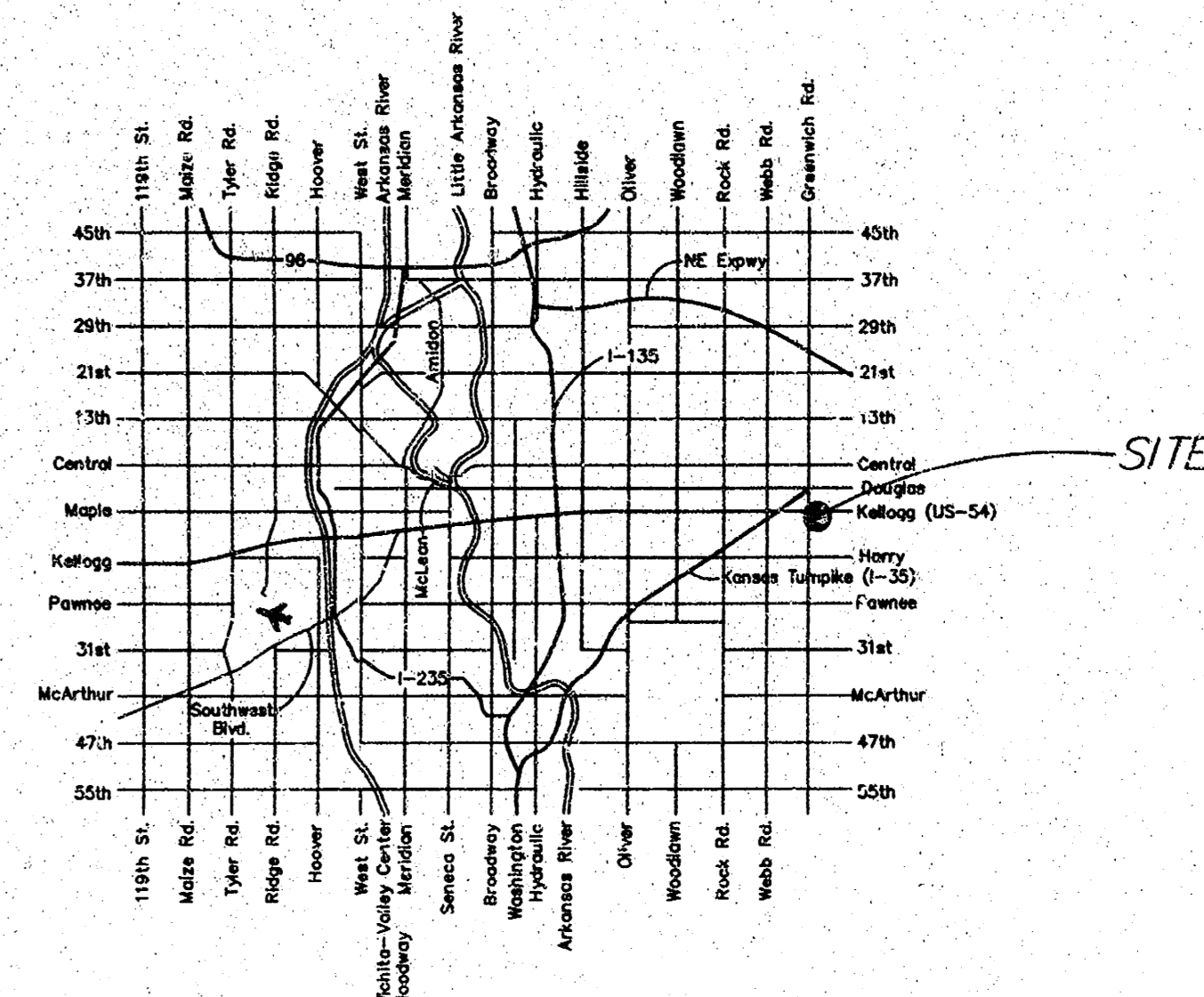
Storm Sewers VRH 10/17/02

NOTE TO CONTRACTORS

Installation, inspection and testing for this project is to be provided by a Licensed Consulting Engineering Firm under contract with the Owner/Developer. Said Inspection to be in accordance with the City of Wichita standard construction engineering practices and certified by a Licensed Professional Engineer. No work shall be performed in dedicated easements or public right-of-way by the Contractor without such inspection nor shall any work be commenced without written authorization by the City Engineer. All Construction and Materials shall comply with the City of Wichita Specifications and Standards (on file and available in the City Engineer's Office).



**AS-BUILT**  
1-31-03  
Neil D. Cable  
Professional Engineer



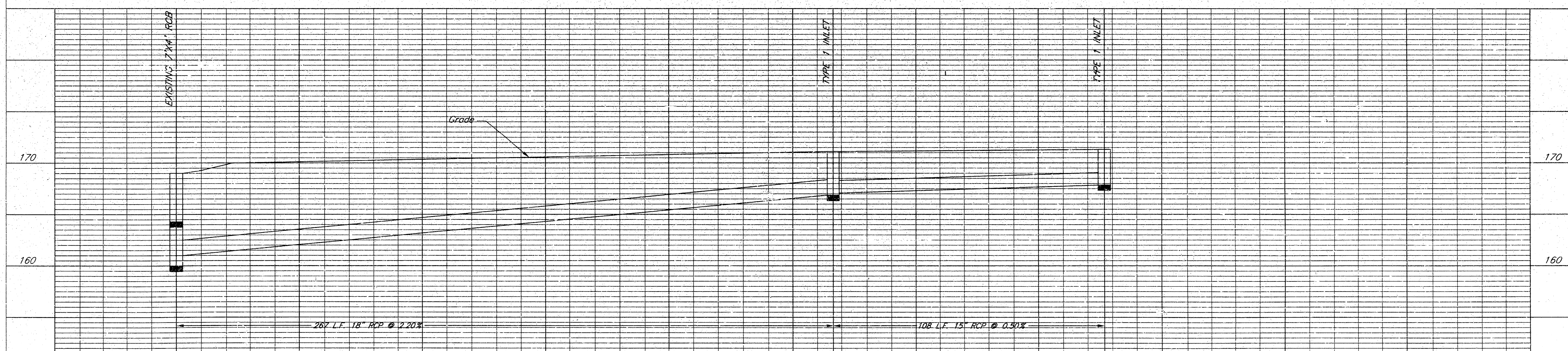
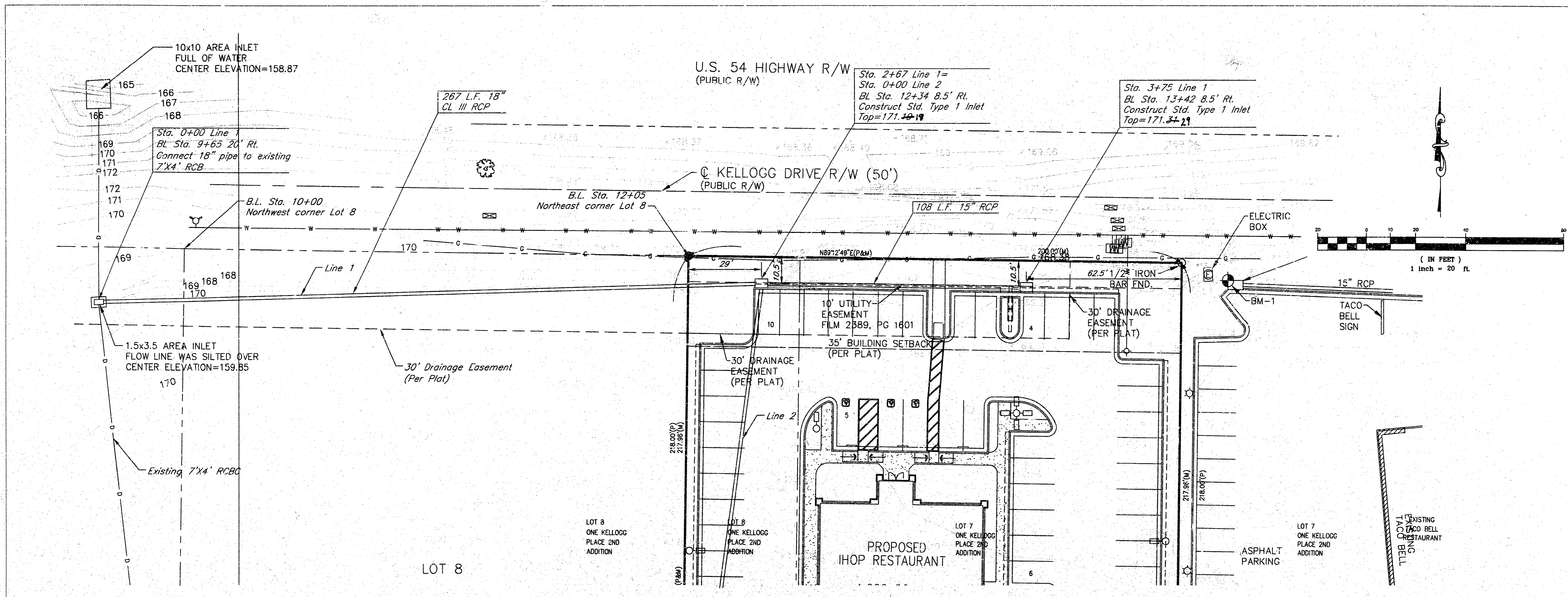
**BENCHMARK:**  
"X" CUT FOUND IN THE NORTHWEST CORNER OF THE CURB INLET AT THE NORTHWEST CORNER OF THE TACO BELL LOT. ELEVATION = 171.79



**kemiller**  
engineering

516 S. Market,  
Wichita, KS 67202

316/264-0242



Ihop - One Kellogg Place  
Storm Sewer Line 1  
Wichita, Kansas

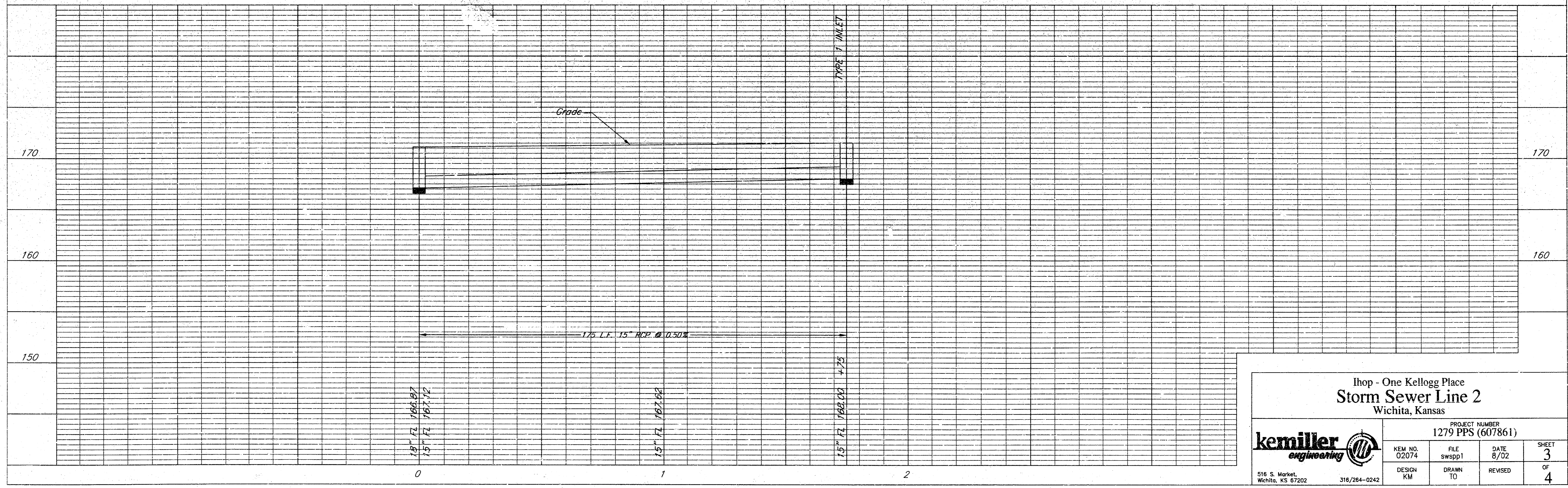
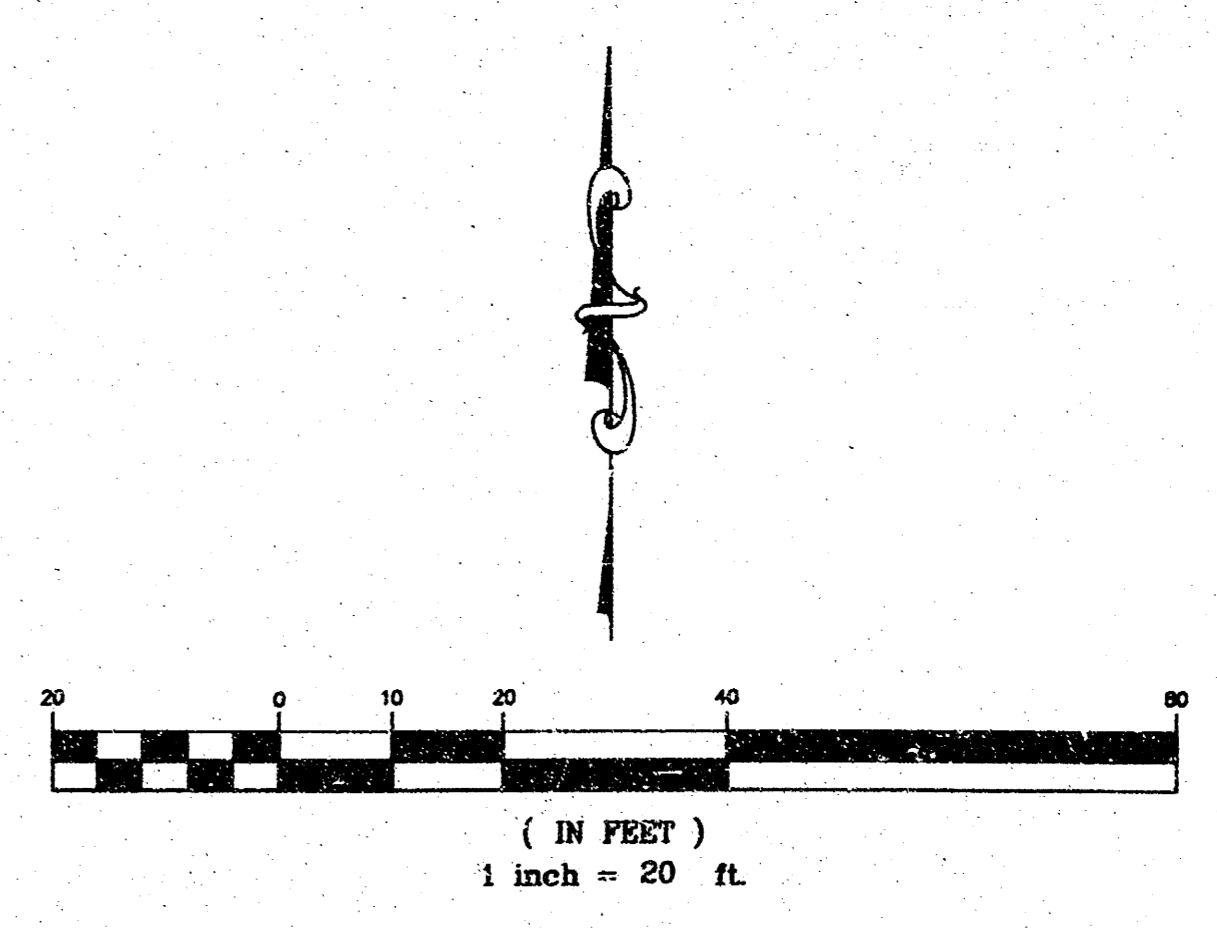
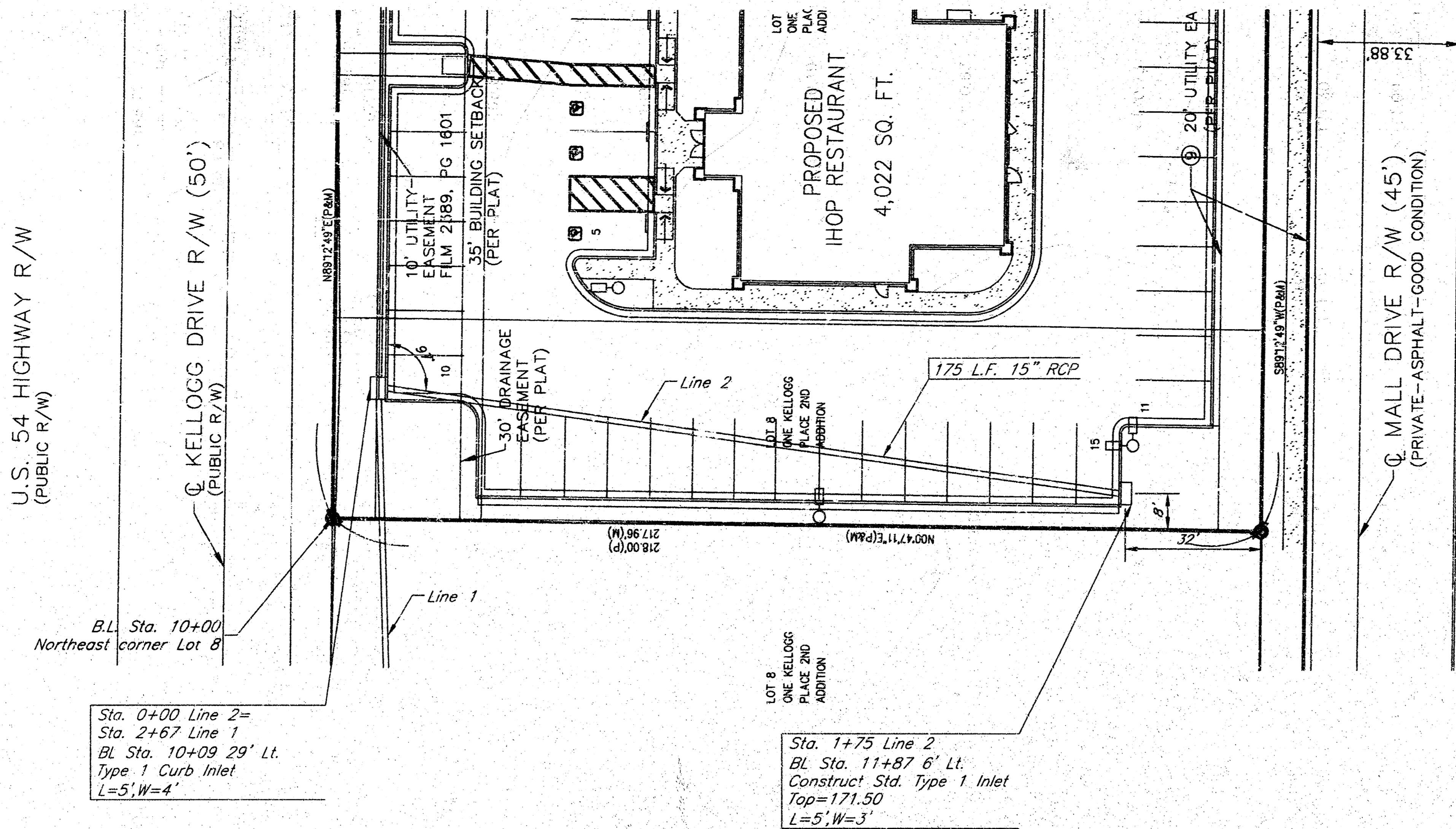
PROJECT NUMBER  
1279 PPS (607861)

**kemiller**  
engineering

KEM NO. 02074	FILE swspp1	DATE 8/02	SHEET 2
DESIGN KM	DRAWN TO	REVISED	OF 4

516 S. Market,  
Wichita, KS 67202

318/284-0242



Ihop - One Kellogg Place  
 Storm Sewer Line 2  
 Wichita, Kansas

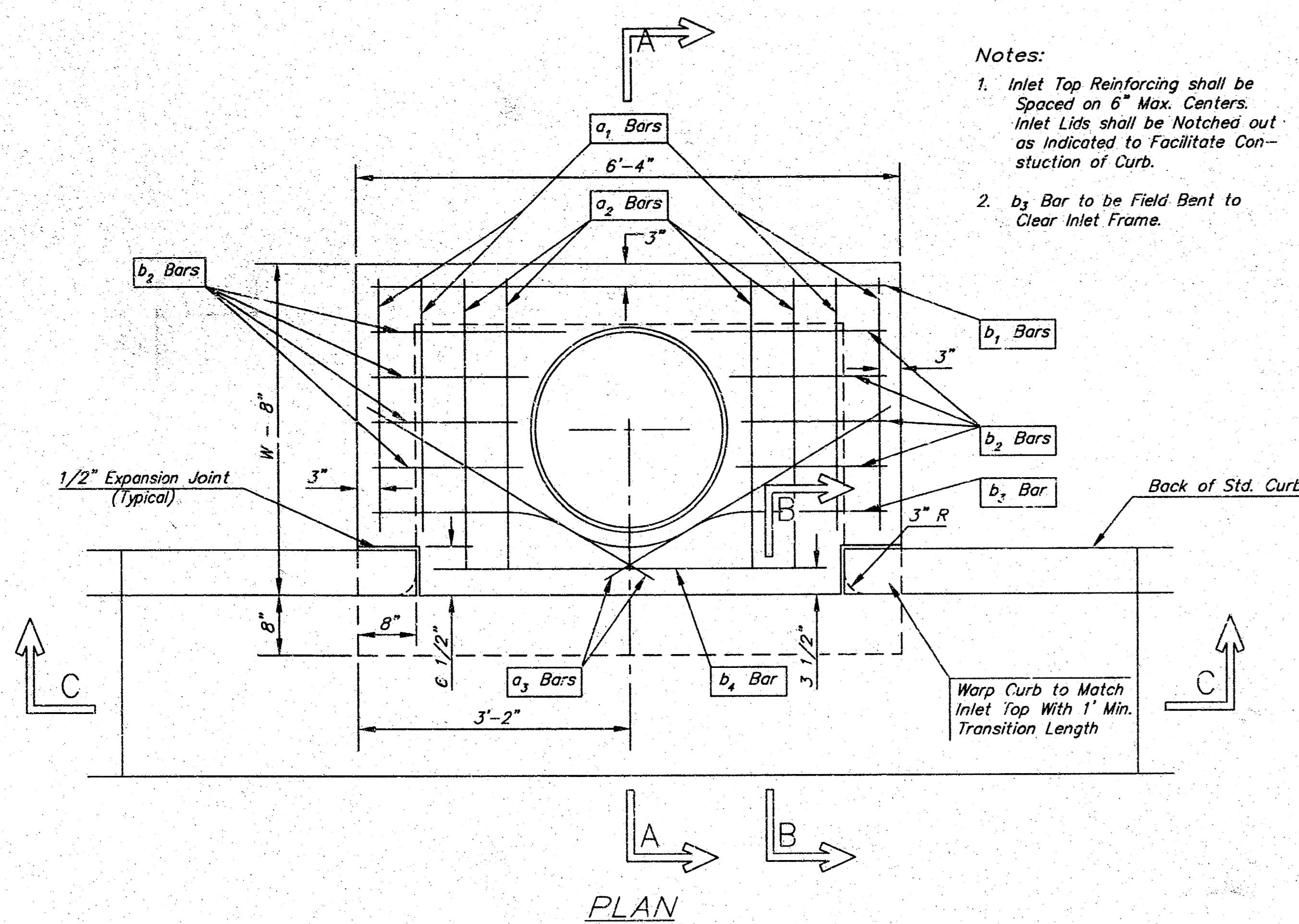
PROJECT NUMBER  
 1279 PPS (607861)

**kemiller**  
 engineering

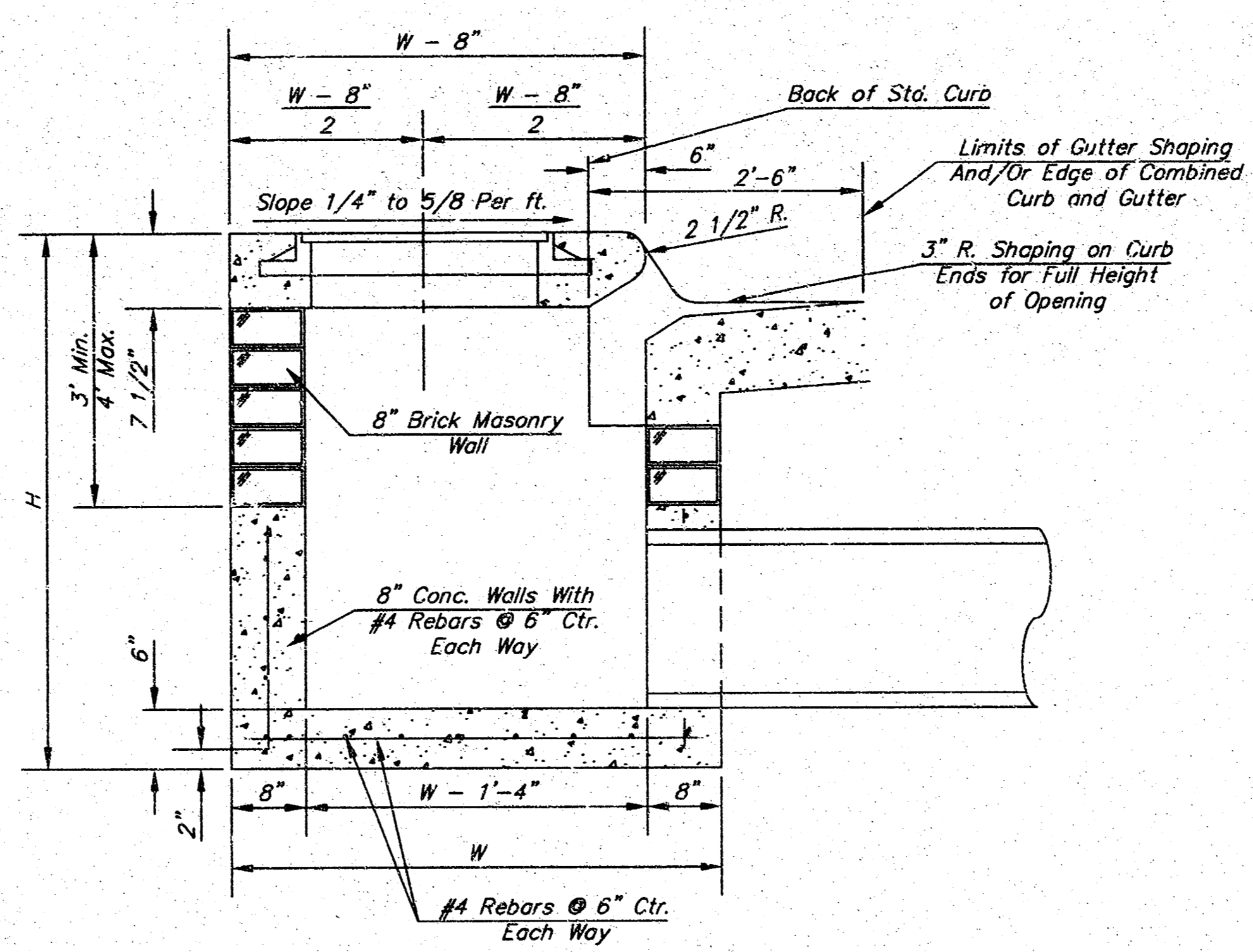
KEM NO. 02074	FILE swspp1	DATE 8/02	SHEET 3
DESIGN KM	DRAWN TO	REVISED	OF 4

516 S. Market,  
 Wichita, KS 67202

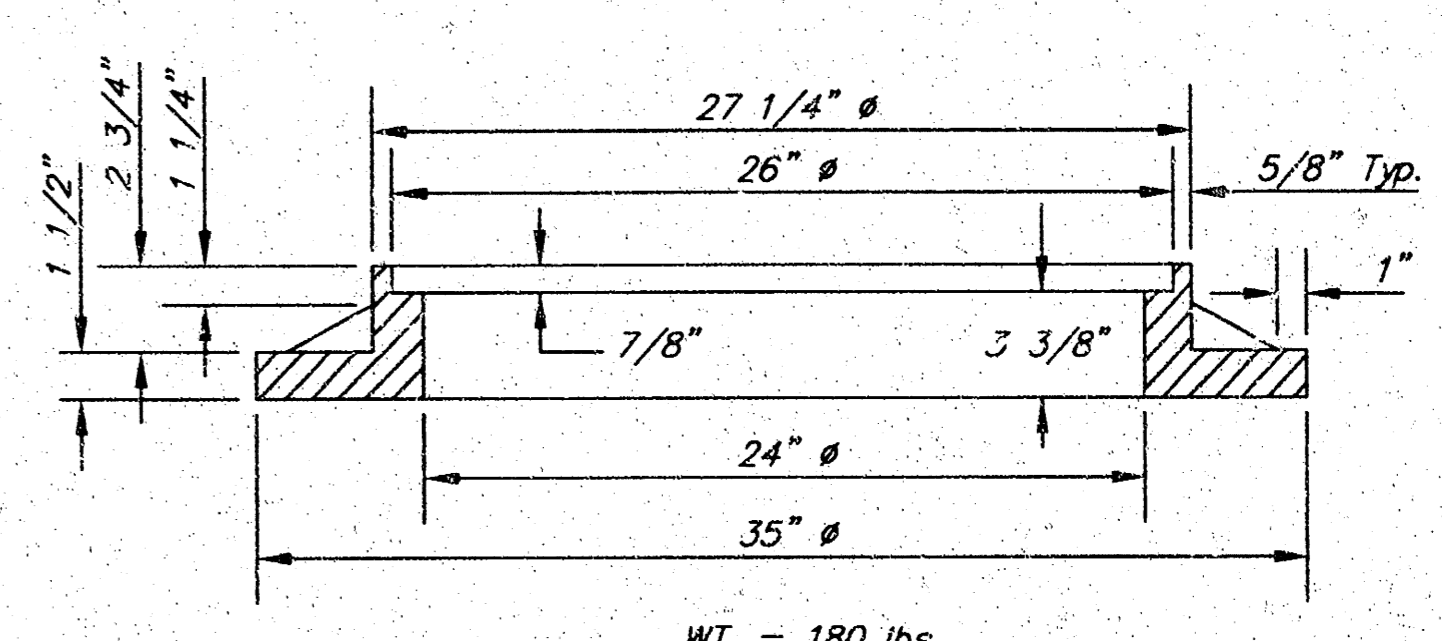
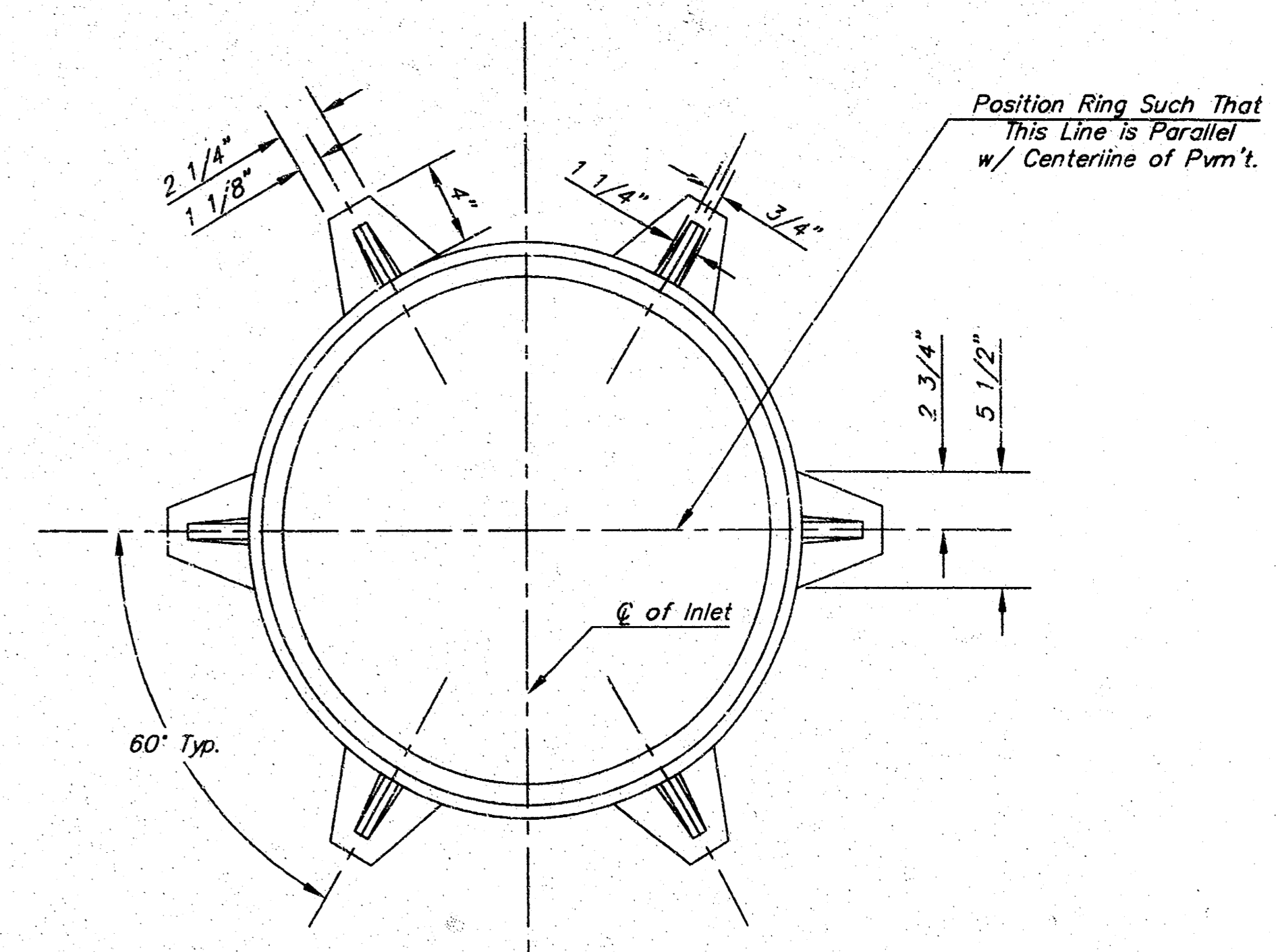
316/284-0242



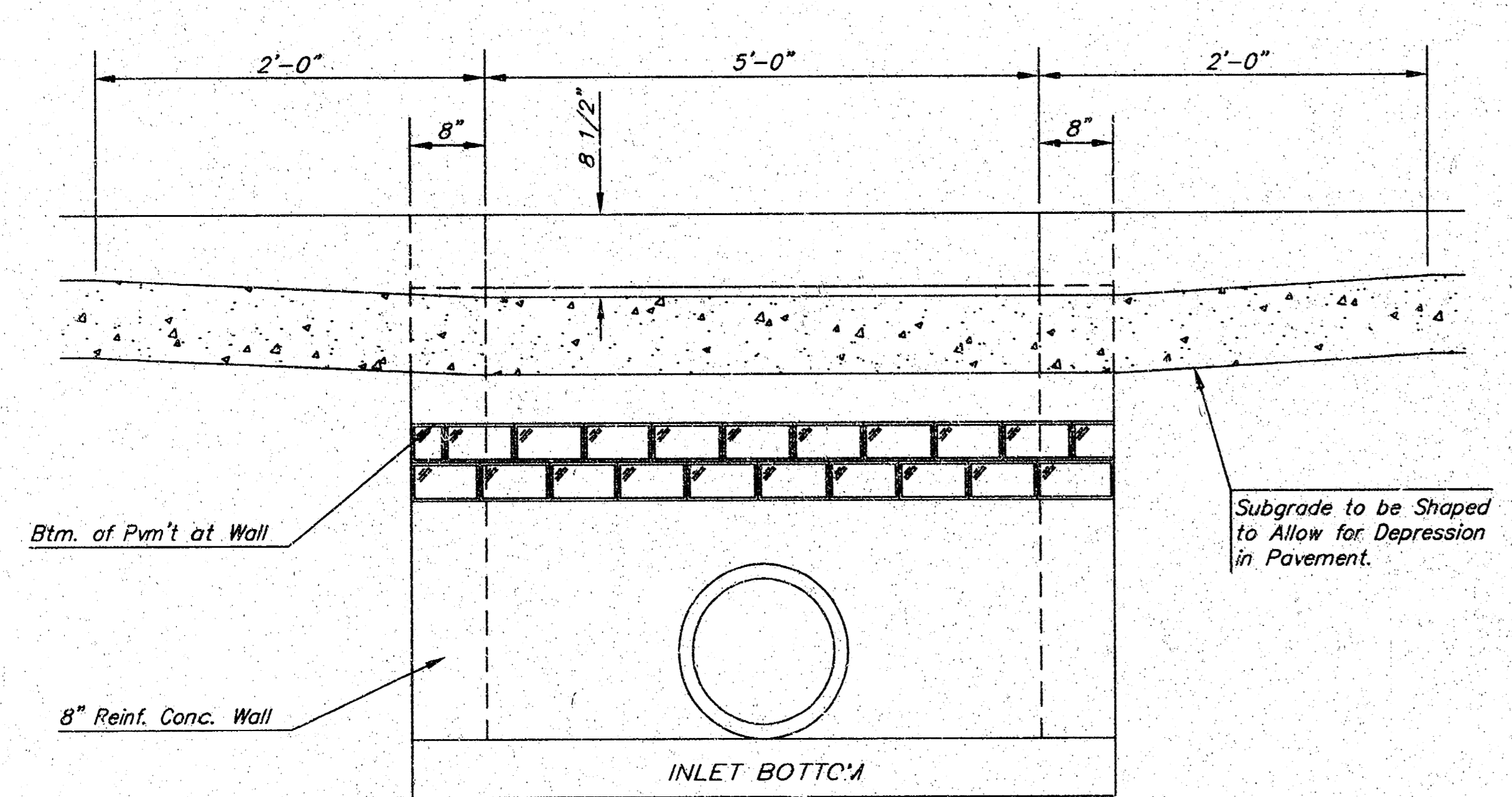
**Notes:**  
 1. Inlet Top Reinforcing shall be Spaced on 8" Max. Centers. Inlet Lids shall be Notched out as Indicated to Facilitate Construction of Curb.  
 2. b<sub>3</sub> Bar to be Field Bent to Clear Inlet Frame.



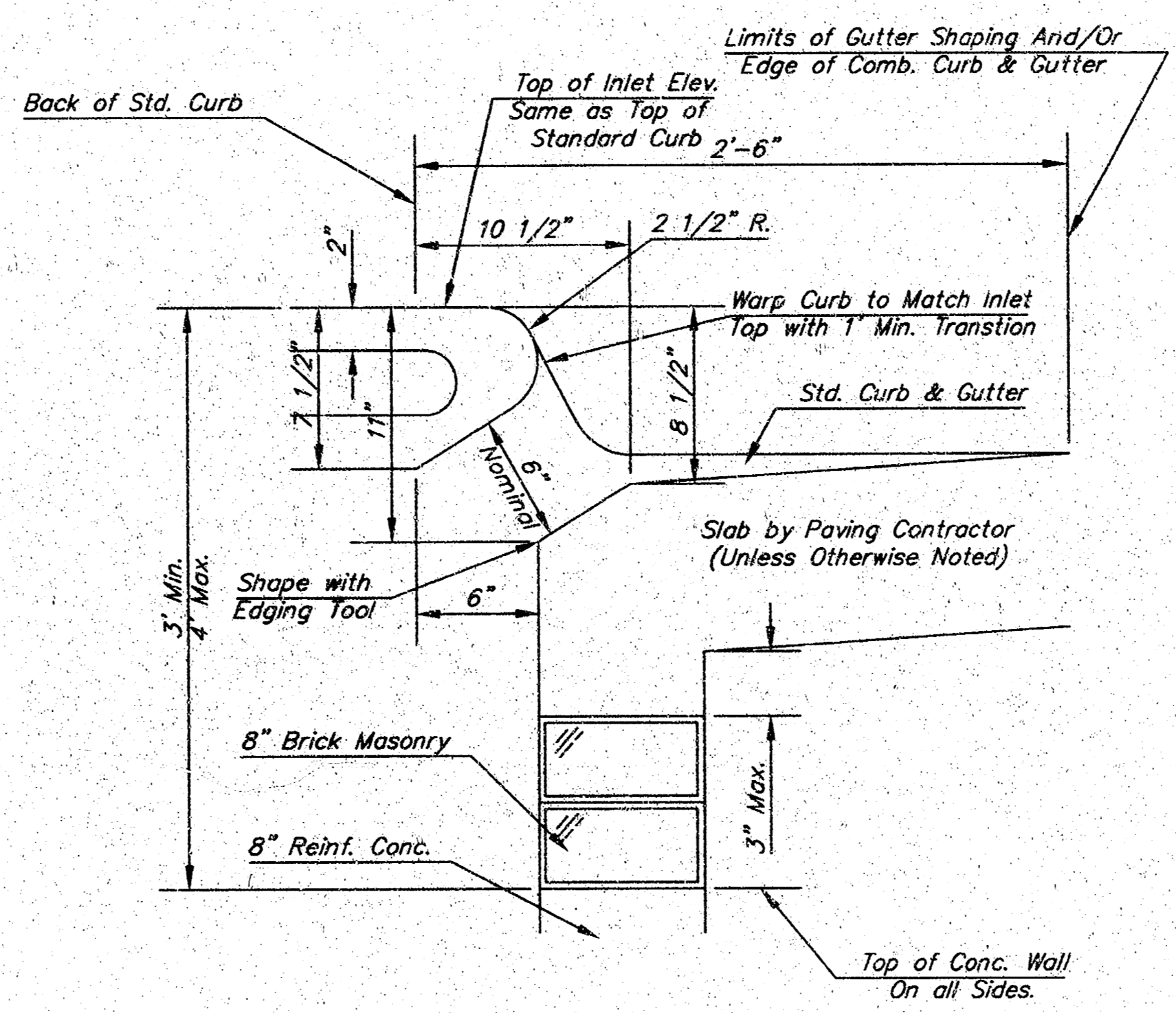
SECTION A-A



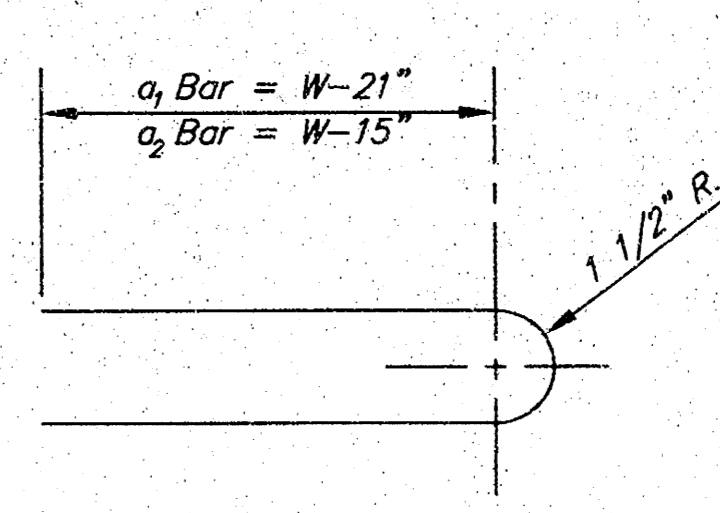
MANHOLE RING AND COVER  
 \*See City of Wichita Standard Manhole Ring and Cover Detail Sheet for Cover Details to Be Used With Inlet Frame.



SECTION C-C



SECTION B-B



BENDING DIAGRAM

STEEL SCHEDULE

BAR	a <sub>1</sub>	a <sub>2</sub>	b <sub>1</sub>						b <sub>2</sub>	b <sub>3</sub>	b <sub>4</sub>	WT. LBS.
NUMBER	4	4	2	1	3	5	7	9	6	1	1	
SIZE	#4	#4	#4	#4	#4	#4	#4	#4	#4	#4	#6	
LENGTH	W=4'-4"	5'-7"	6'-7"	4'-0"	6'-1"	-	-	-	1'-9"	6'-2"	4'-8"	60±
	W=5'-4"	7'-7"	8'-7"	5'-0"	6'-1"	-	-	-	1'-9"	6'-2"	4'-8"	81±
	W=6'-4"	9'-7"	10'-7"	6'-0"	-	6'-1"	-	-	1'-9"	6'-2"	4'-8"	101±
	W=7'-4"	11'-7"	12'-7"	7'-0"	-	-	6'-1"	-	1'-9"	6'-2"	4'-8"	121±
	W=8'-4"	13'-7"	14'-7"	8'-0"	-	-	-	6'-1"	1'-9"	6'-2"	4'-8"	141±

Note: a<sub>1</sub> Bars to be Placed Approx. 2" Below Top of Inlet Cover.

STANDARD CURB INLET PRECAST TOPS

W	PRE-CAST TOP SIZE	PIPE SIZE	CU. YD. CONC.
4'-4"	3'-8" 6'-4" 7 1/2"	21" & SMALLER	0.38±
5'-4"	4'-8" 6'-4" 7 1/2"	24" & 30"	0.51±
6'-4"	5'-8" 6'-4" 7 1/2"	36" & 42"	0.64±
7'-4"	6'-8" 6'-4" 7 1/2"	48" & 54"	0.77±
8'-4"	7'-8" 6'-4" 7 1/2"	60" & 66"	0.90±

GENERAL NOTES

- Concrete tops to be installed on thin mortar cushion to insure full support along brick walls. Concrete tops may be cast in place or precast. Concrete used for inlet construction shall be concrete pavement mix.
- Contractor shall have the option of constructing 8" brick masonry walls between the concrete inlet base and top on this inlet when W=6'-4" and H=7'-0" or less.
- Inlet invert shall be shaped with B sack sand mix concrete to create flow channels and to increase hydraulic efficiency such that the inlet will be self cleaning between all inlet and/or outlet pipes.
- The ends of all pipes installed in inlets shall be cut off flush with the inside face of the inlet wall.

<p>THE CITY OF WICHITA          CITY ENGINEER'S OFFICE          455 NORTH MAIN STREET          WICHITA, KANSAS 67202          (316) 268-4501          (316) 268-4114 FAX</p>	<b>STANDARD TYPE 1 CURB INLET</b> OPENING = 6" x 5'-0"	
	M. E. LINDEBAK P.E. - CITY ENGINEER	
	PROJECT NUMBER 1279 PPS	INDEX CODE 607861
	DATE AUGUST 02	SHEET 4 OF 4