

STORM SEWER SYSTEM IMPROVEMENTS TO SERVE

BEL AIRE CROSSINGS

3750 N. WOODLAWN

LOT 3, BLOCK 1

BRUSH CREEK 3RD ADDITION

1292 PPS(607861)

CITY OF WICHITA, KANSAS

Neil D. Cable, P.E., City Engineer

GENERAL NOTES

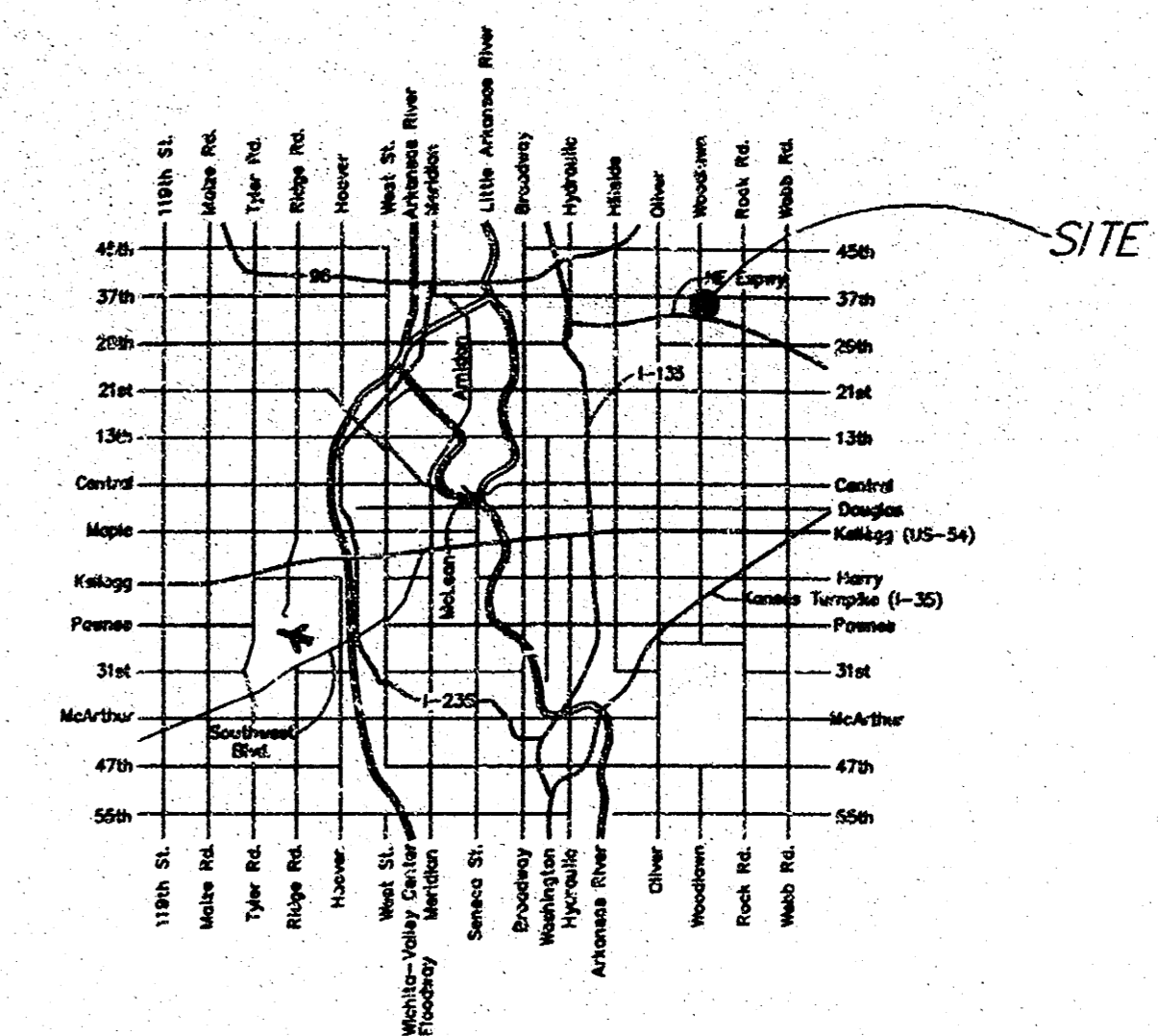
- Contractor will be required to provide notice to utility companies a minimum of twenty-four (24) hours prior to any excavation, as follows:

Kansas One-Call	687-2470
-----------------	----------

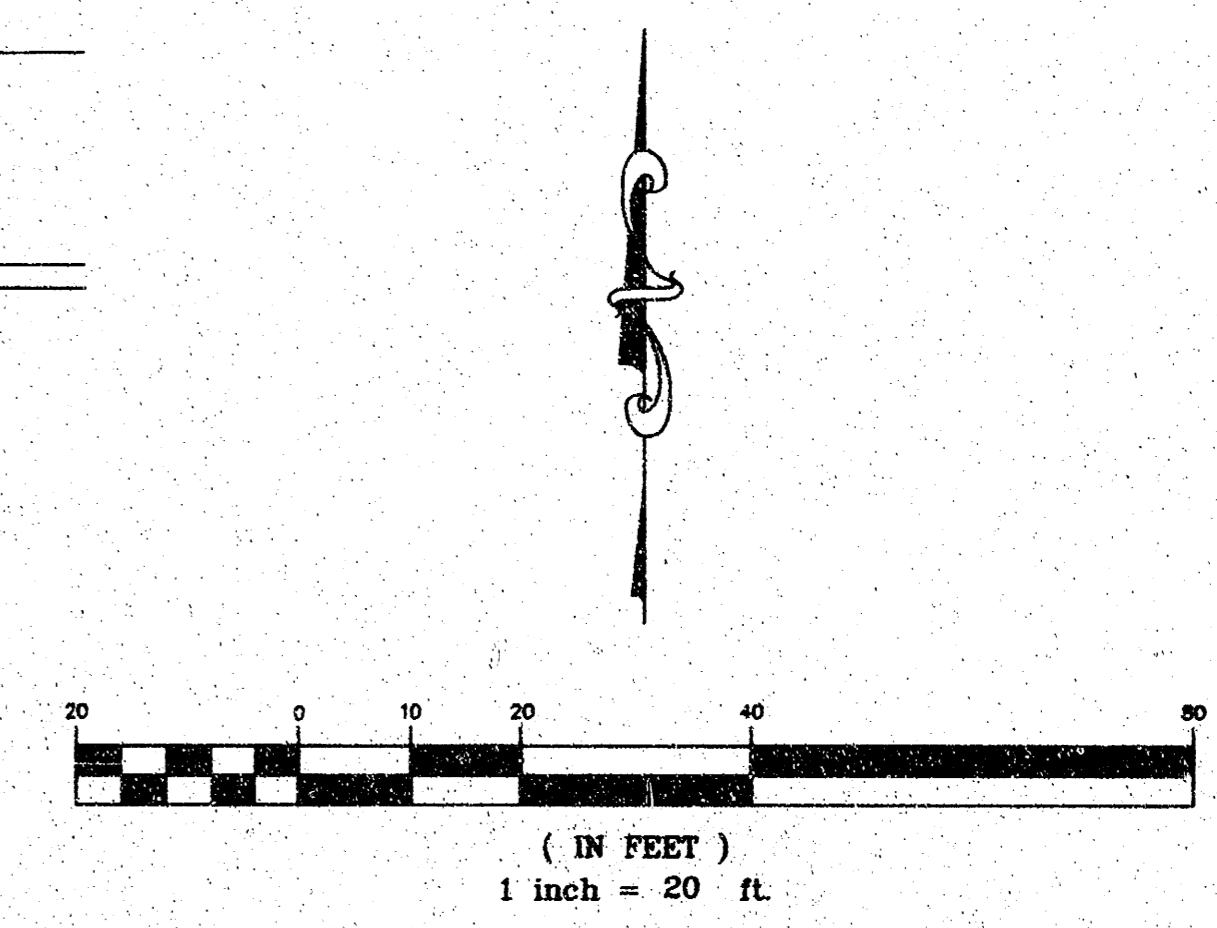
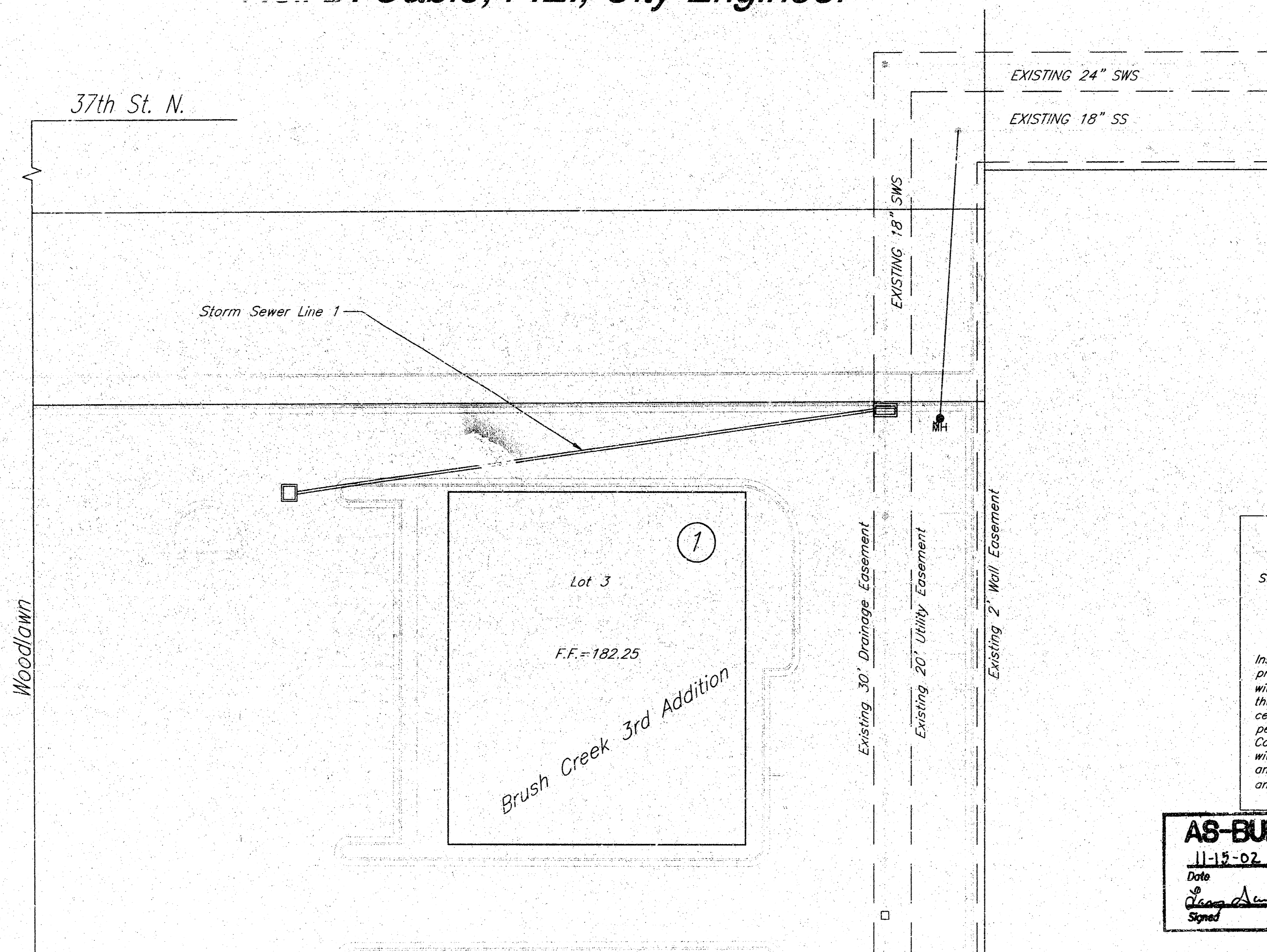
The Contractor must notify the following in case of an emergency:

Cablevision	262-4270
or	263-2061
K.P.L. Gas Service Company	383-9650
Kansas Gas & Electric Company	383-8600
Peoples Natural Gas	
Southwestern Bell Telephone Company	1-571-2611
City of Wichita Water Department	268-4908
City of Wichita Sewer Department	268-4071
Kansas Gas Service	832-3168
or	832-3167
Peoples Natural Gas	942-8811
or	1-800-303-0357
- Exist. utilities and their locations, as shown on the plans, represent the best information obtainable for design. Location information has been obtained from the various utility companies and is either from company record drawings or company-provided field locations. The Contractor will be required to work around existing utilities which do not conflict with proposed construction.
- The Contractor to verify utility locations prior to construction of this project.
- Utility service and installation shall be coordinated with the respective utility owners. Contacts are:

Kansas Gas Service	James Stoltz	831-3122
Kansas Gas & Electric	Russ Chitwood	261-6251
Peoples Natural Gas	John Stark	942-8811
Wichita Water	Paul Bryant	268-4555
	Steve Palmer	268-4908
Southwestern Bell	Jim Tabin	268-2759
Multimedia Cablevision	Mark Anaya	262-4270
- All lawn/turf areas disturbed by construction of proposed improvements shall be restored with sod. All sodding work shall be in accordance with the City of Wichita standard specifications and the City of Wichita administrative regulation No. AR78 which governs cleanup and replacement following construction. All costs for this work shall be subsidiary to the lump sum price bid for "Site Restoration."
- Traffic affected by the construction of this project shall be handled in accordance with the latest edition of the Manual on Uniform Traffic Control Devices.
- All commercial signs to be moved by others prior to construction.
- Properties within the project may have underground irrigation systems (lawn sprinklers) which conflict with the new construction. Contractor shall remove such components as needed during construction of the project. The irrigation system shall be reinstalled in like kind before project completion. Any irrigation system modifications required because of project improvements shall be coordinated with the property owner. Portions of underground irrigation systems not in conflict with construction shall be protected from damage and shall remain in place. All work related to underground irrigation/sprinklers shall be subsidiary to Site Restoration.
- Contractor shall not start work on the project until the project inspector is assigned to the project and is present on the site. Any work done without inspection will be required to be uncovered for inspection.
- The contractor shall be responsible for preserving property irons. The contractor will be required to re-establish any property irons which are damaged or destroyed by his construction operations. Such irons shall be re-established by a licensed land surveyor in accordance with state laws.



LOCATION MAP



APPROVED AS NOTED

Storm Sewers VRH 10/23/02

NOTE TO CONTRACTORS

Installation, inspection and testing for this project is to be provided by a Licensed Consulting Engineering Firm under contract with the Owner/Developer. Said inspection to be in accordance with the City of Wichita standard construction engineering practices and certified by a Licensed Professional Engineer. No work shall be performed in dedicated easements or public right-of-way by the Contractor without such inspection nor shall any work be commenced without written authorization by the City Engineer. All Construction and Materials shall comply with the City of Wichita Specifications and Standards (on file and available in the City Engineer's Office).

AS-BUILT

11-15-02

Date

Neil D. Cable

Signed



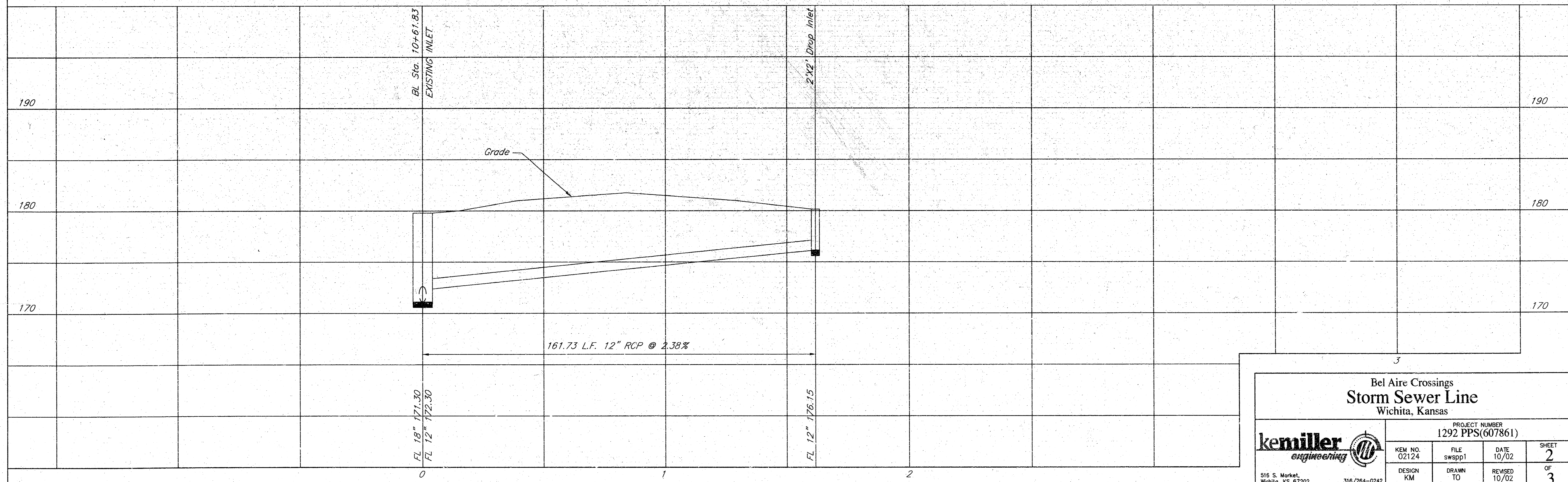
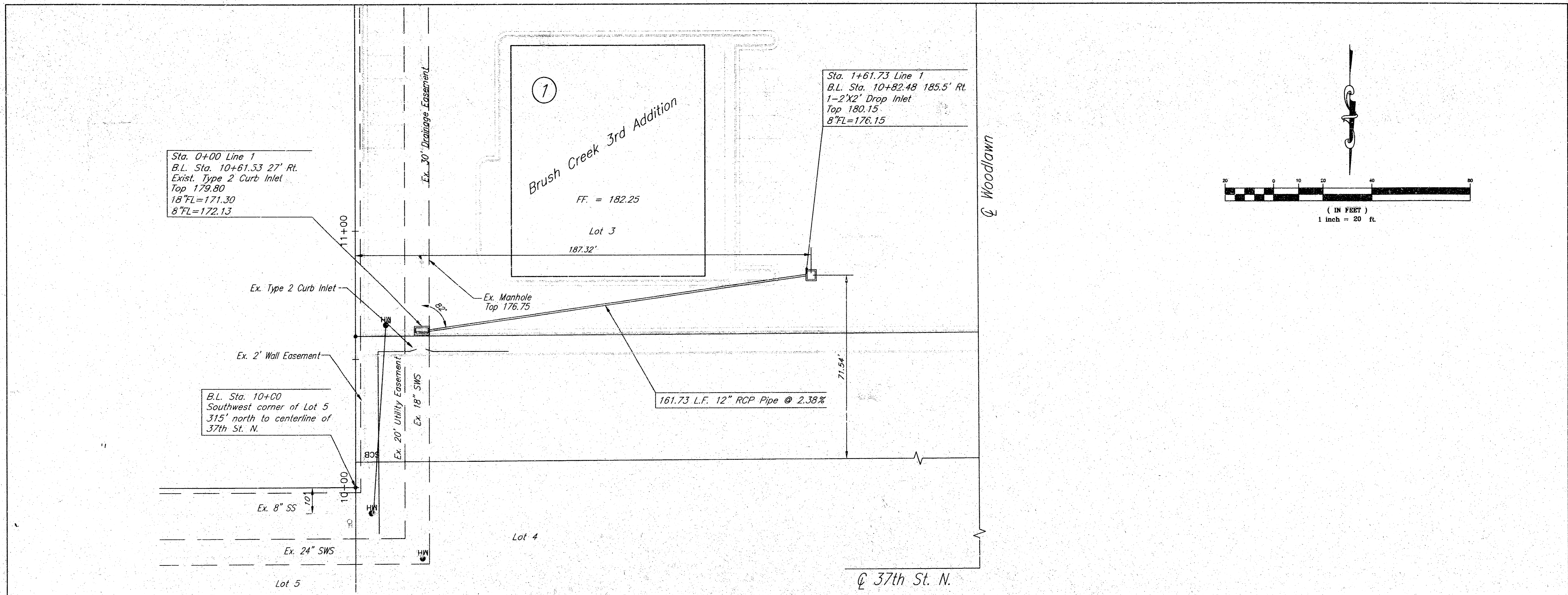
INDEX OF SHEETS

1	Cover Sheet
2	Plan and Profile Sheet
3	Detail Sheet

BENCHMARK:
 City of Wichita Disc, Woodlawn and
 37th Street North SE corner of
 intersection 75.7' E of centerline &
 56.3' S of centerline.
 Elev.=183.04 (City Datum)



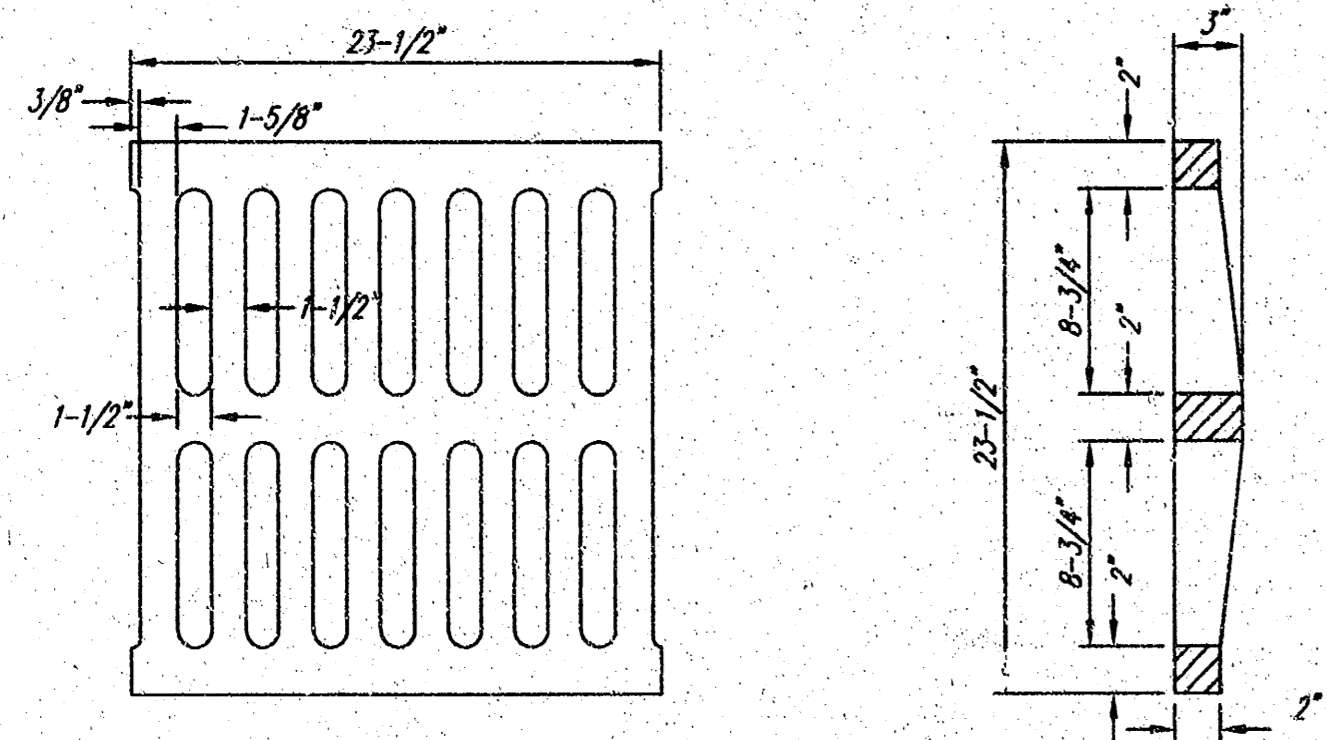
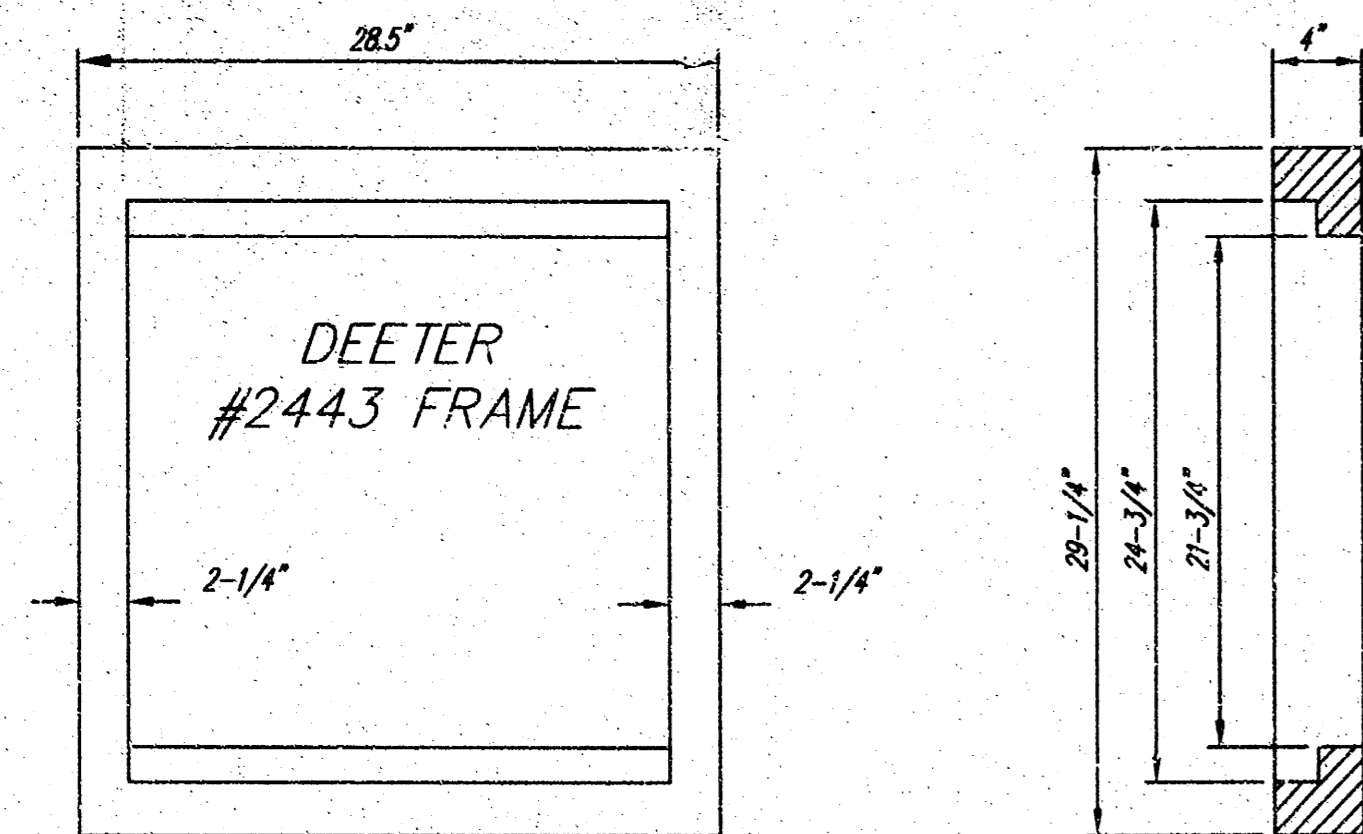
516 S. Market,
 Wichita, KS 67202 316/264-0242



Bel Aire Crossings
Storm Sewer Line
 Wichita, Kansas

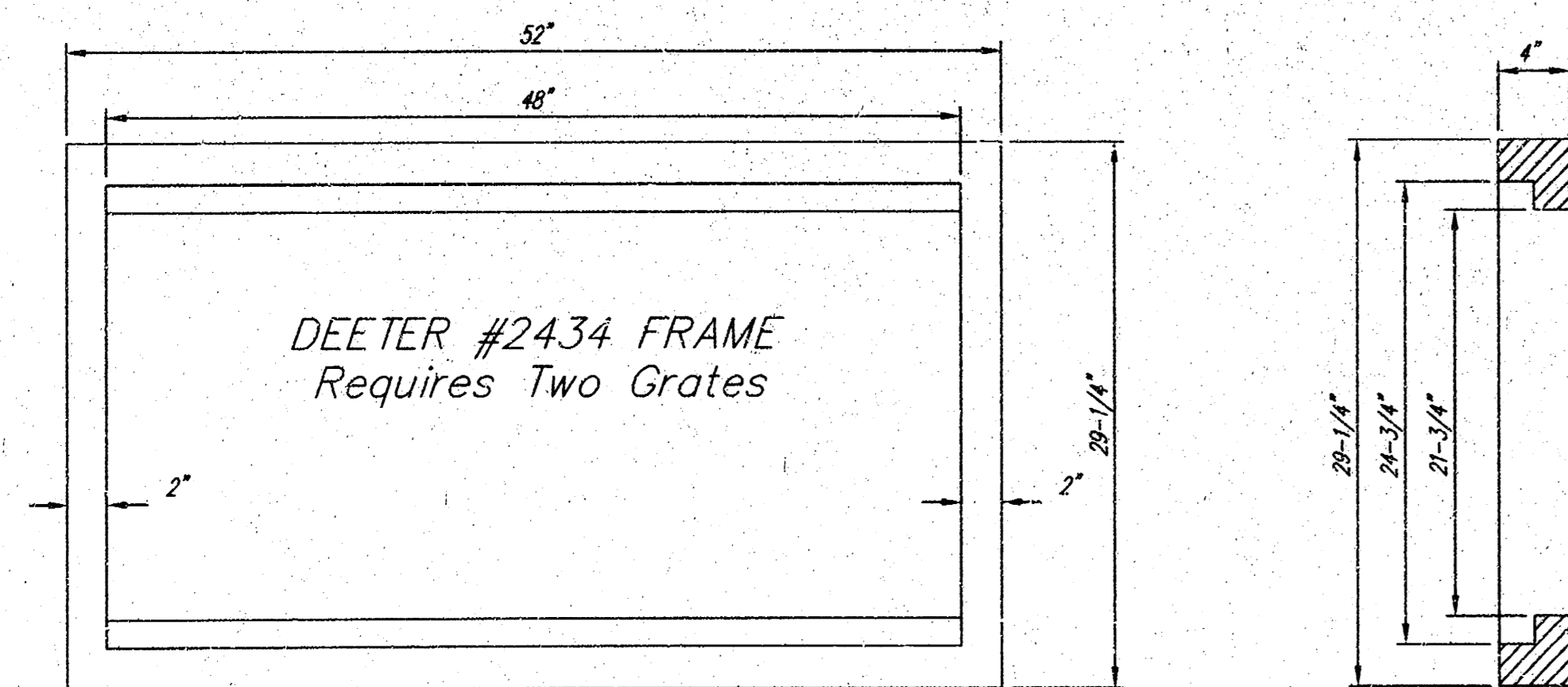
PROJECT NUMBER 1292 PPS(607861)			
KEM NO. 02124	FILE swspp1	DATE 10/02	SHEET 2
DESIGN KM	DRAWN TO	REVISED 10/02	OF 3

kemiller engineering
516 S. Market
Wichita, KS 67202



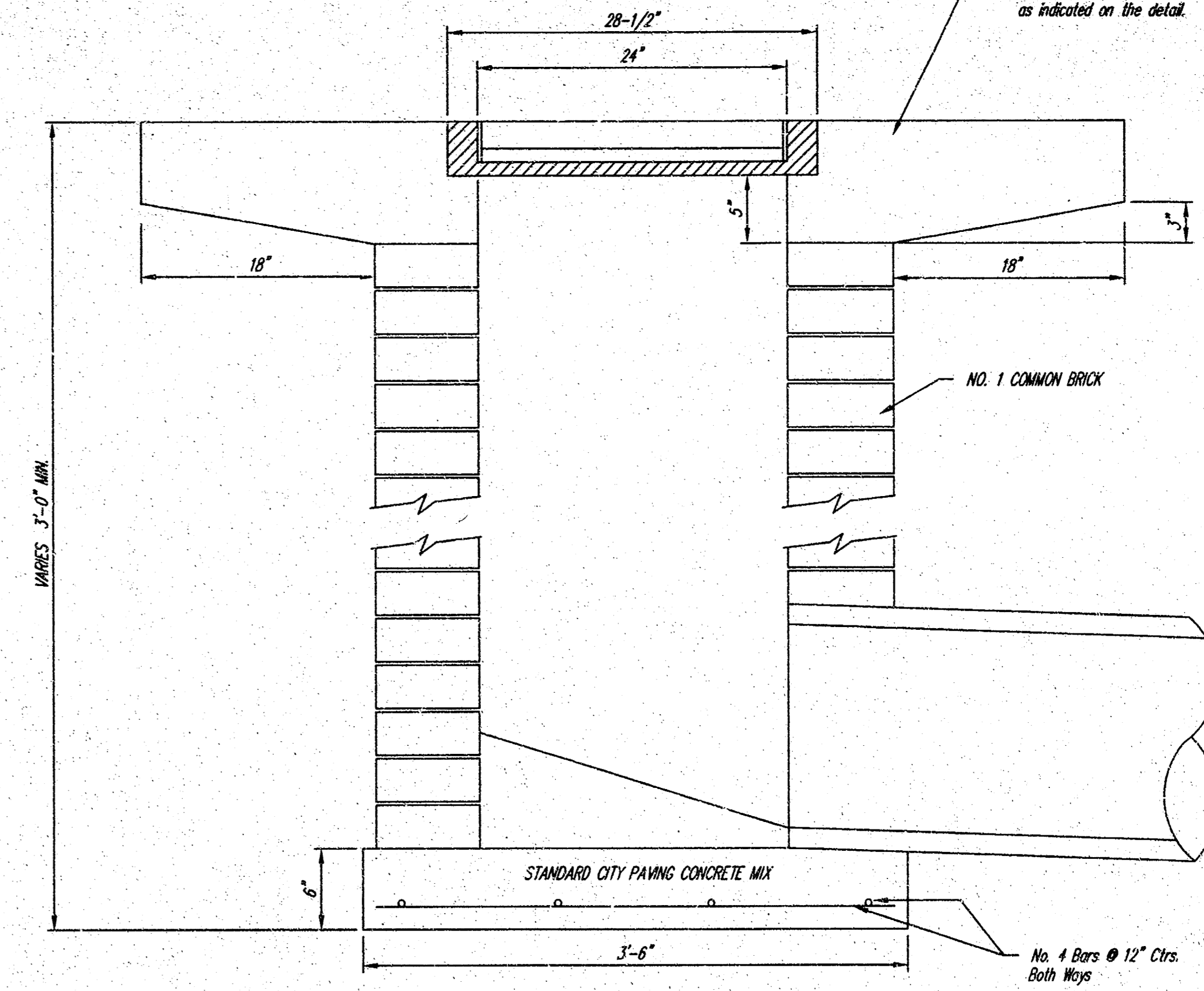
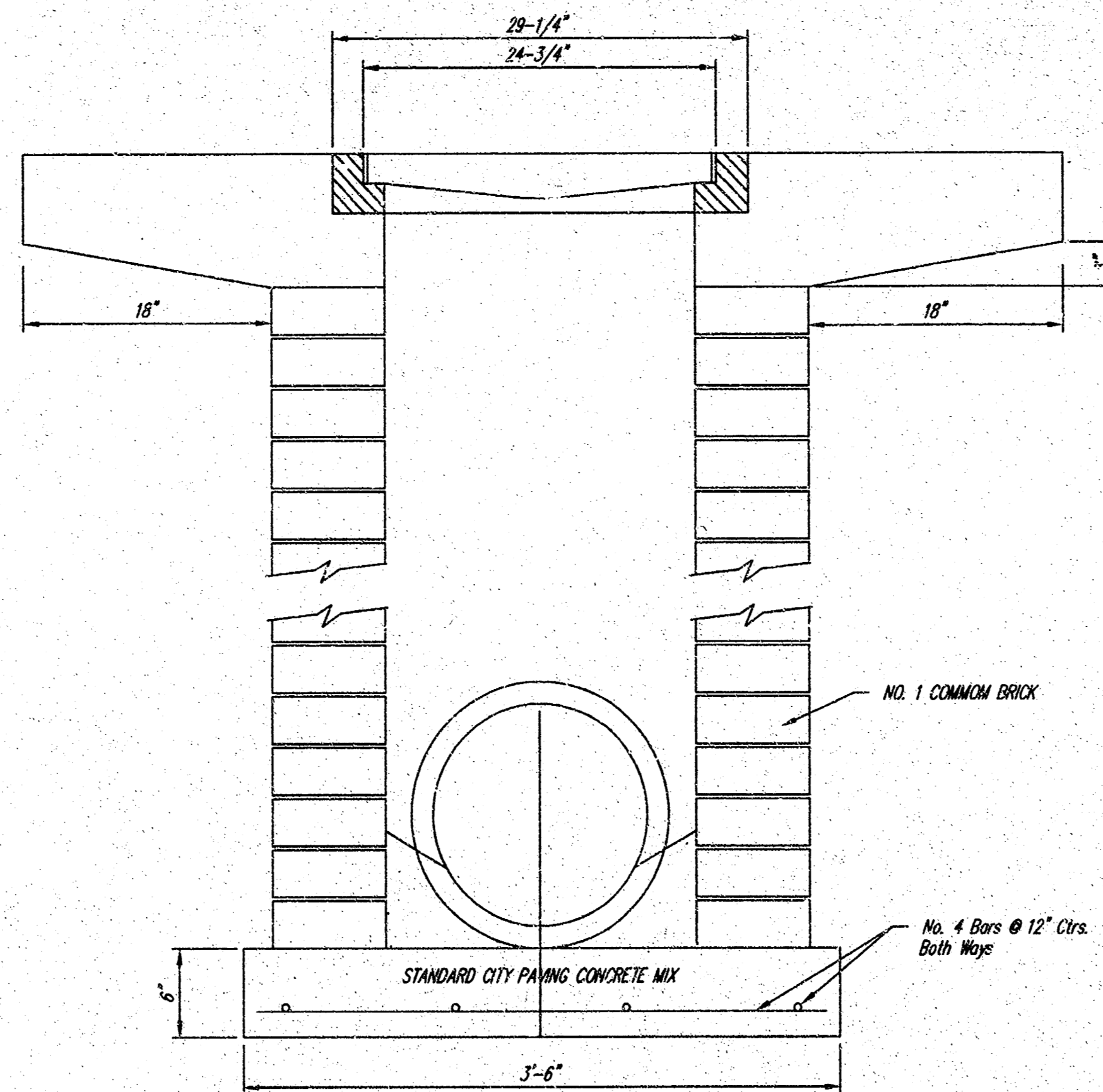
DEETER #2433 GRATE

24" x 24" Frame and Grate Detail

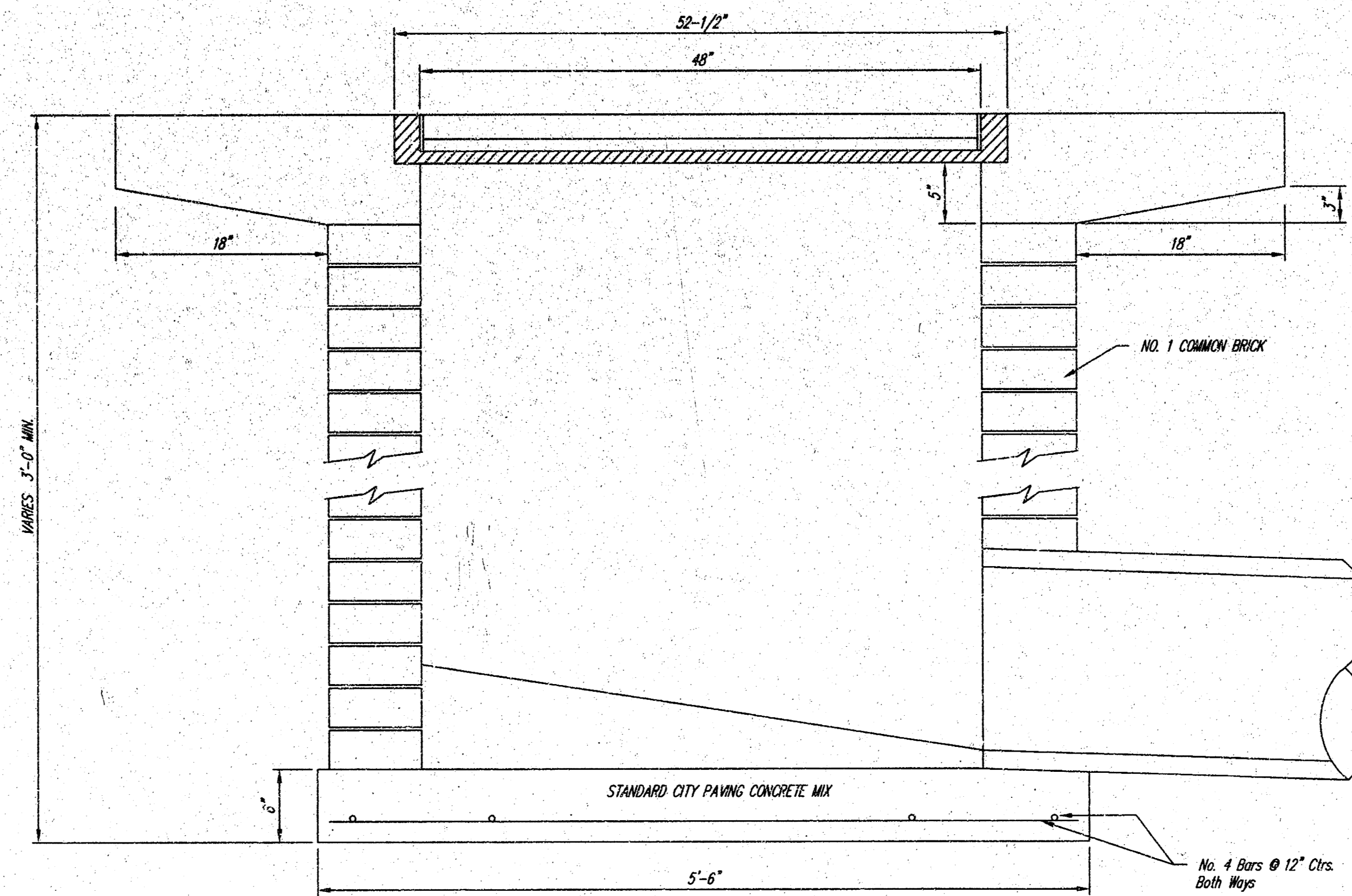


Double 24" x 24" Frame Detail

NOTE: Grates shall be imprinted on the top surface with "CITY OF WICHITA" using letters at least 1" in height. Other marking methods may be approved by the engineer.



Note: Concrete apron shall be constructed around the inlet when inlet is located in an unimproved area. Where the inlet is adjacent to pavement, the pavement thickness shall be tapered to the inlet in 18 inches as indicated on the detail.



<p>THE CITY OF WICHITA</p> <p>CITY ENGINEER'S OFFICE</p> <p>CITY HALL - SEVENTH FLOOR</p> <p>425 NORTH MAIN STREET</p> <p>WICHITA, KANSAS 67202</p> <p>(316) 265-4501</p> <p>(316) 268-4114 Fax</p>	<p>DROP INLET</p> <p>2' X 2' X 4'</p>	
	<p>M. E. LINDEBAK P.E. - CITY ENGINEER</p>	
	<p>FILE NAME</p> <p>Drop Inlet</p>	<p>REV. PROJ.</p> <p>02124</p>
	<p>DATE</p> <p>OCT 02</p>	<p>SHEET 3 OF 3</p>