

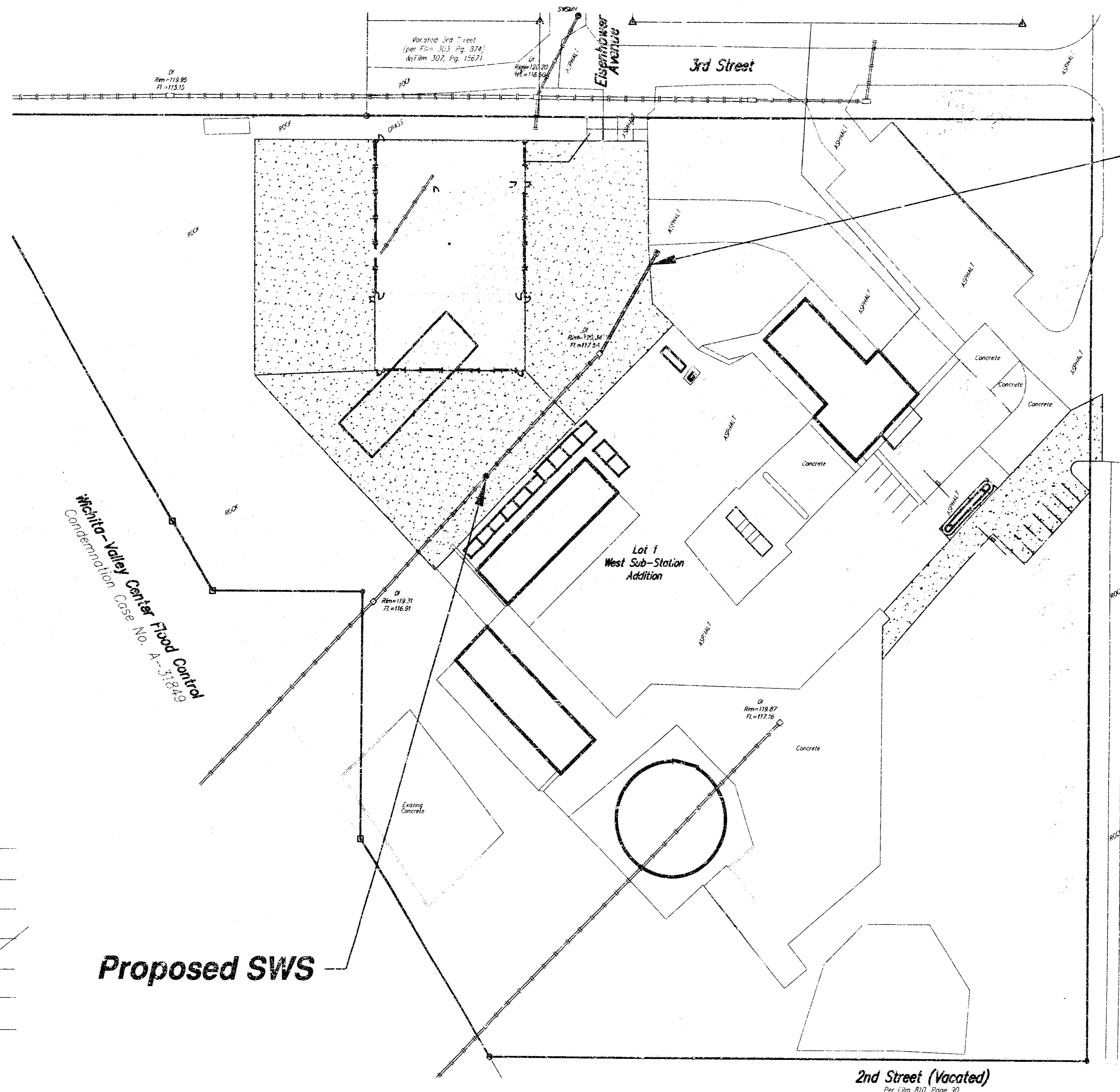
# STORM WATER SEWER IMPROVEMENTS TO SERVE WEST MAINTENANCE FACILITY LOT 1, WEST SUB-STATION ADDITION PROJECT NO. 1198 PPS OCA NO. 607861

## GENERAL NOTES

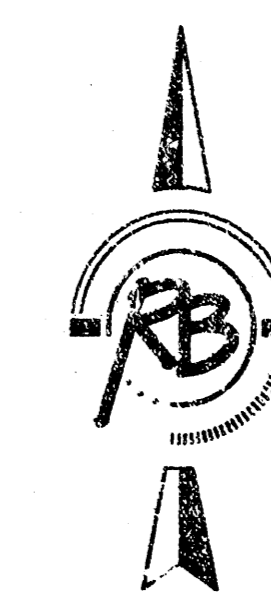
- Contractor will be required to provide a minimum advance notice of forty-eight (48) hours to utility companies prior to starting any excavation as follows:  

Kansas One-Call	687-2470
Cox Communications	262-0661
Kansas Gas Service	383-8600
KGE	303-8600
Peoples Natural Gas Company	1-800-303-0357
Southwestern Bell Telephone Company	1-800-286-8313
City of Wichita Water Department	262-6000
City of Wichita Sewer Maintenance	262-6000
- The Contractor must notify the following in case of an emergency:  

Cox Communications	262-0661
Kansas Gas Service	383-8600
KGE	303-8600
Peoples Natural Gas Company	1-800-303-0357
Southwestern Bell Telephone Company	1-800-286-8313
City of Wichita Water Department	262-6000
City of Wichita Sewer Maintenance	262-6000
- Existing utilities and their location, as shown on the plans, represent the best information obtainable for design. Location information has been obtained from the various utility companies and is either from company record drawings or company-provided field locations. The Contractor will be required to work around existing utilities within the right-of-way which do not conflict with proposed construction.
- The Contractor shall give all property owners and/or tenants of developed property directly abutting the construction of this project a minimum of ten (10) days advance notice prior to start of construction.
- The Contractor shall be responsible for preserving property irons. The Contractor will be required to re-establish any property irons which are damaged or destroyed by his construction operations. Such irons shall be re-established by a licensed land surveyer in accordance with state laws.
- All work on this project to be in accordance with City of Wichita Standard Specifications dated March 1998.



Proposed SWS



APPROVED AS NOTED  
BY CITY ENGINEER OF WICHITA

Sanitary Sewers \_\_\_\_\_  
 Storm Sewers VRH 1/15/02  
 Driveway Approaches \_\_\_\_\_  
 Water Mains \_\_\_\_\_  
 Paving \_\_\_\_\_

NOTE TO CONTRACTORS

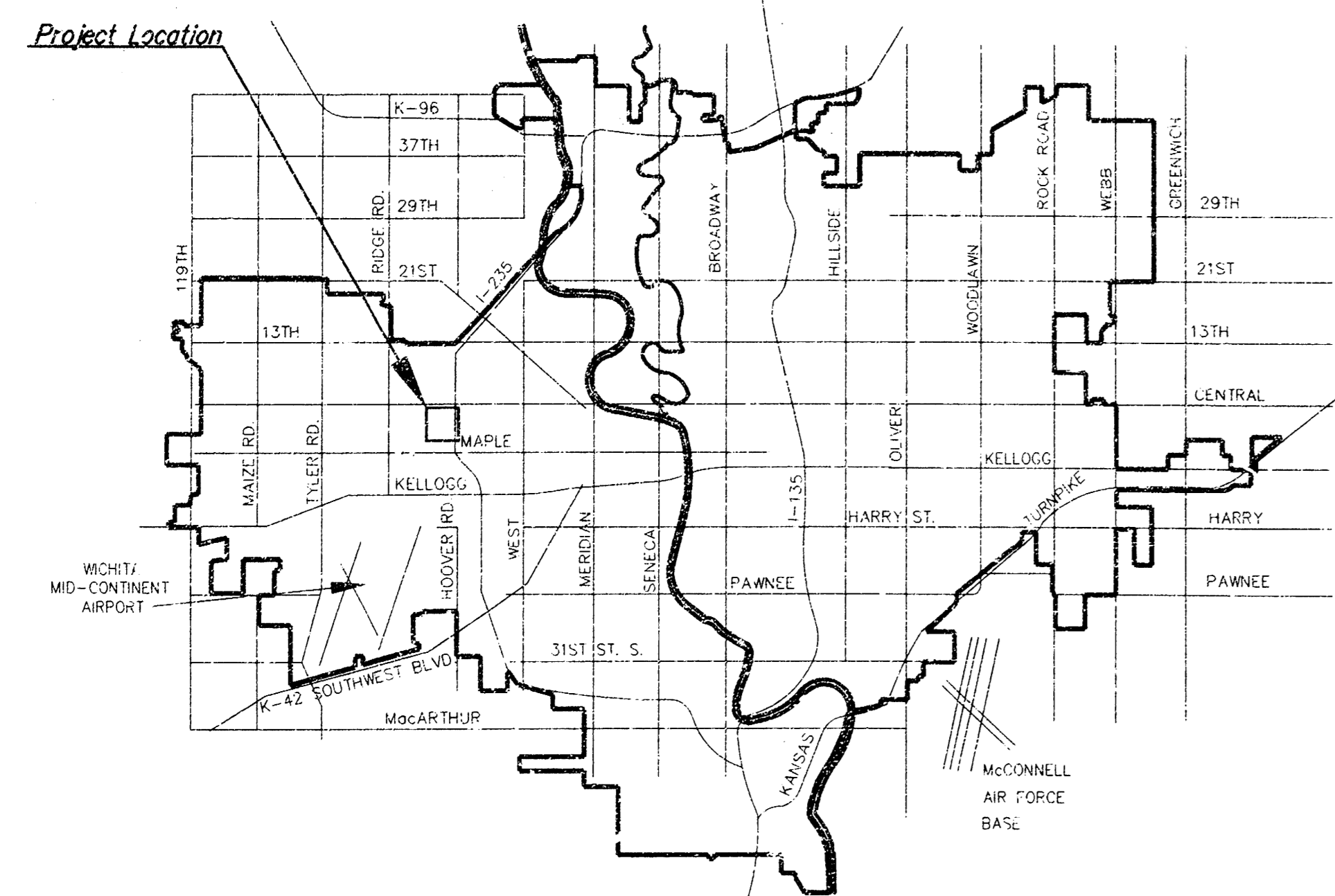
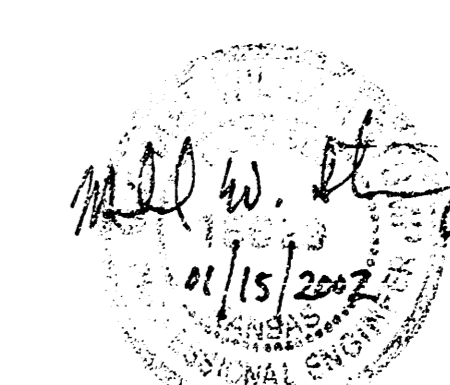
Inspection and testing for this project are to be provided by a Licensed Consulting Engineering Firm under contract with the Owner/Developer. Said inspection to be in accordance with the City of Wichita standard construction engineering practices and certified by a Licensed Professional Engineer. No work shall be performed in dedicated easements or public right-of-way by the Contractor without such inspection, nor shall any work be commenced without written authorization by the City Engineer.

## BENCH MARKS

On-Site Bench Mark:  
 Railroad spike in the northeast side of  
 power pole.  
 Elevation=122.76 (City Datum)

## INDEX OF SHEETS

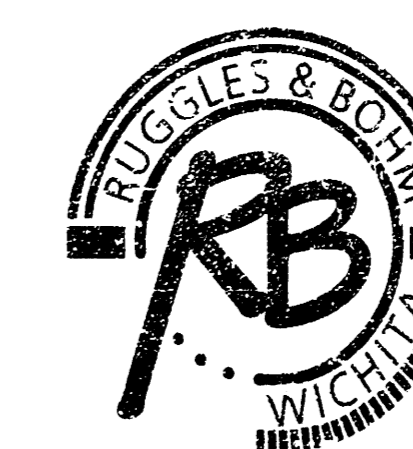
- TITLE SHEET
- PLAN & PROFILE
- STD. DROP INLET DETAIL



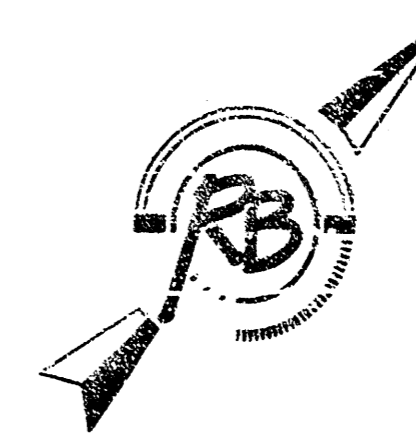
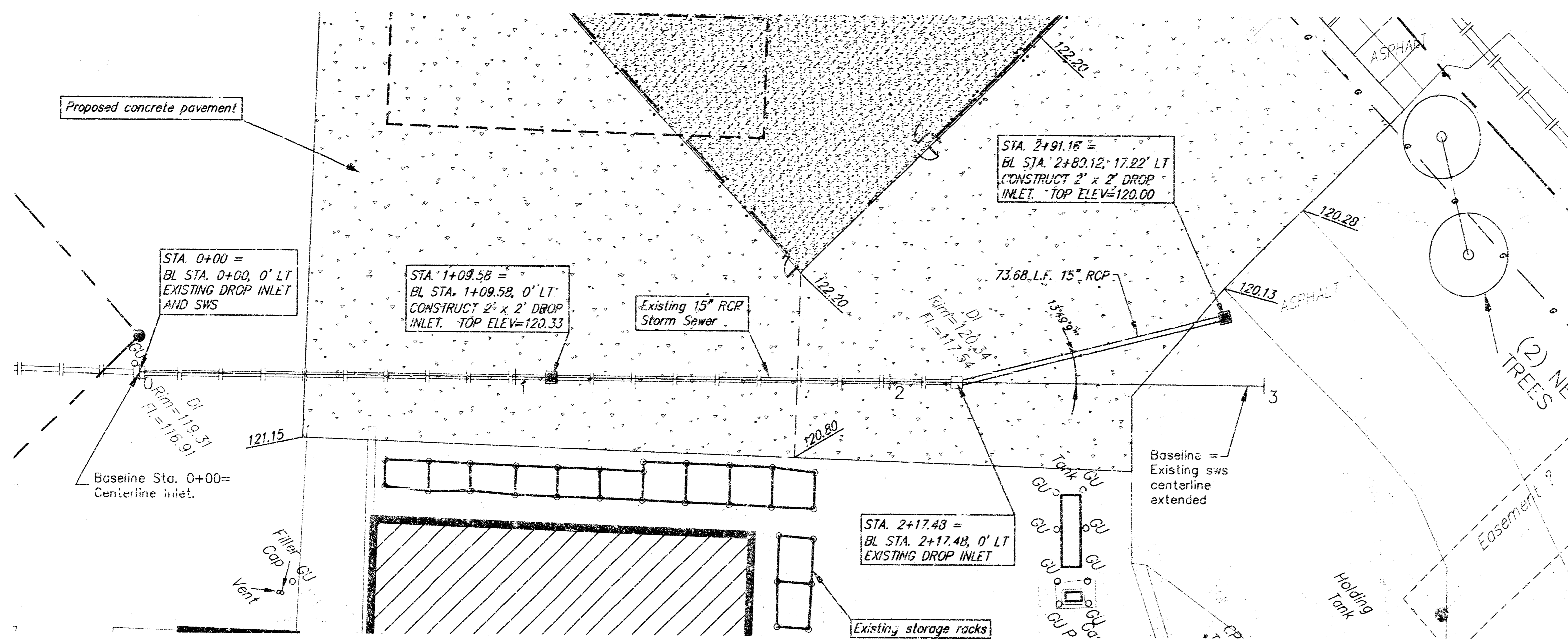
VICINITY MAP

**CITY OF WICHITA, KANSAS**  
**MICHAEL E. LINDEBAK, P.E. - CITY ENGINEER**

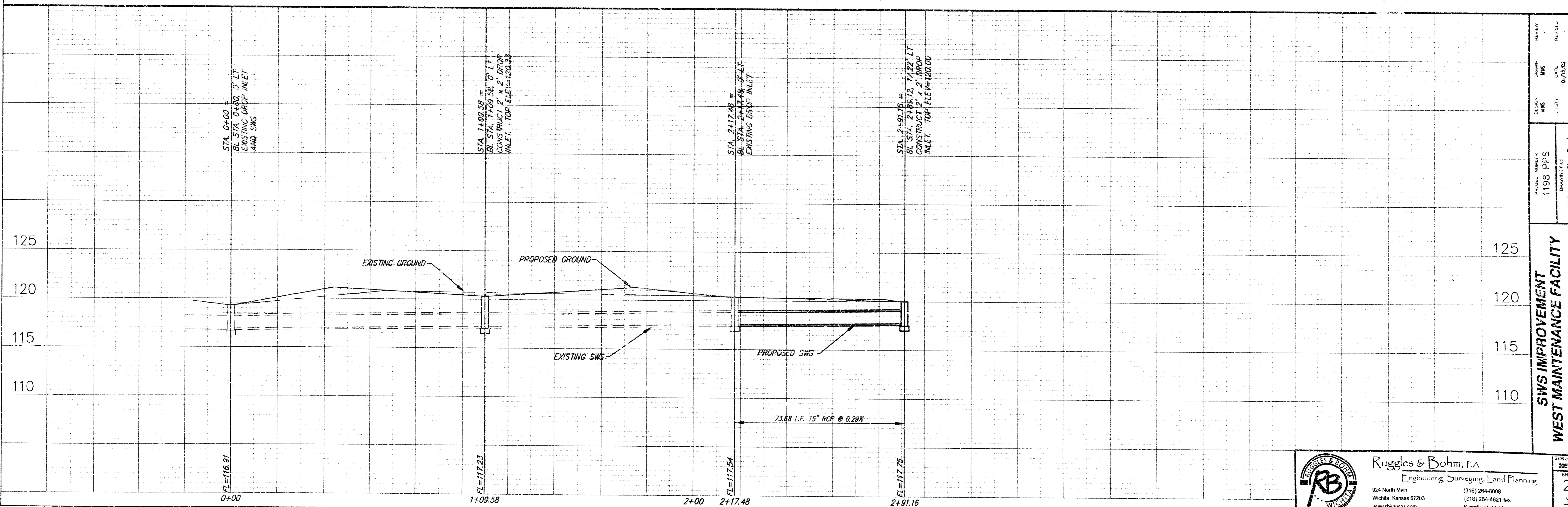
Interstate 235 Right-of-Way  
 Condemnation Case No. A-77195



**Ruggles & Bohm, P.A.**  
 Engineering, Surveying, Land Planning  
 924 North Main (316) 264-8008  
 Wichita, Kansas 67203 (316) 264-4621 fax  
 www.rbkansas.com E-mail: info@rbkansas.com



SCALE  
 1" = 20' Horiz. (Plan)  
 1" = 5' Vert. (Profile)

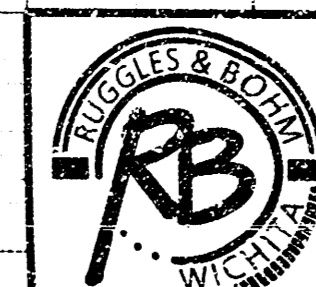


PROJECT NUMBER  
 1198 PPS  
 DRAWING TITLE  
 SWS Improvement (Storm Sewer)

DATE  
 07/20/02

SCALE  
 1" = 20' Horiz. (Plan)  
 1" = 5' Vert. (Profile)

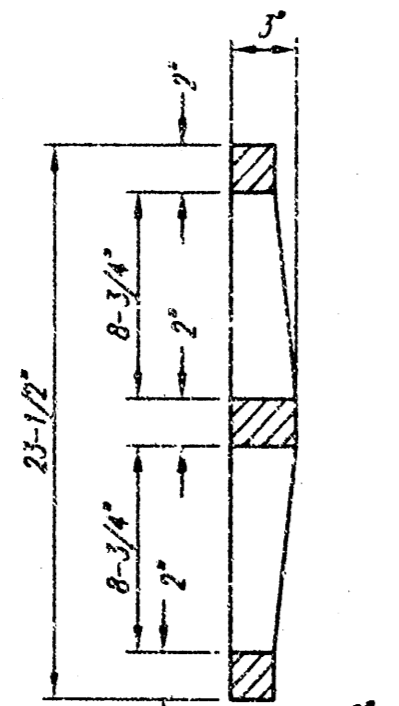
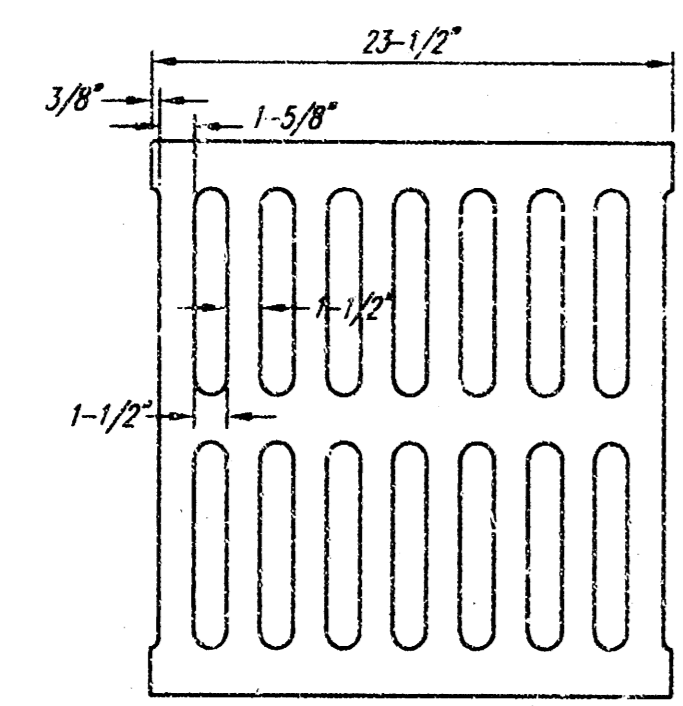
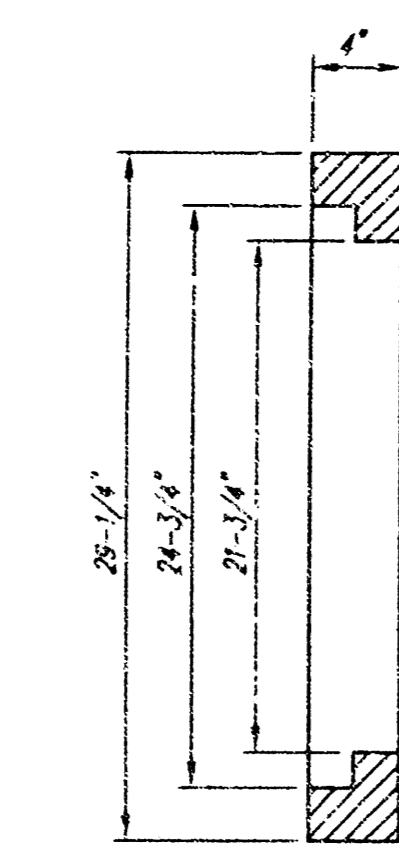
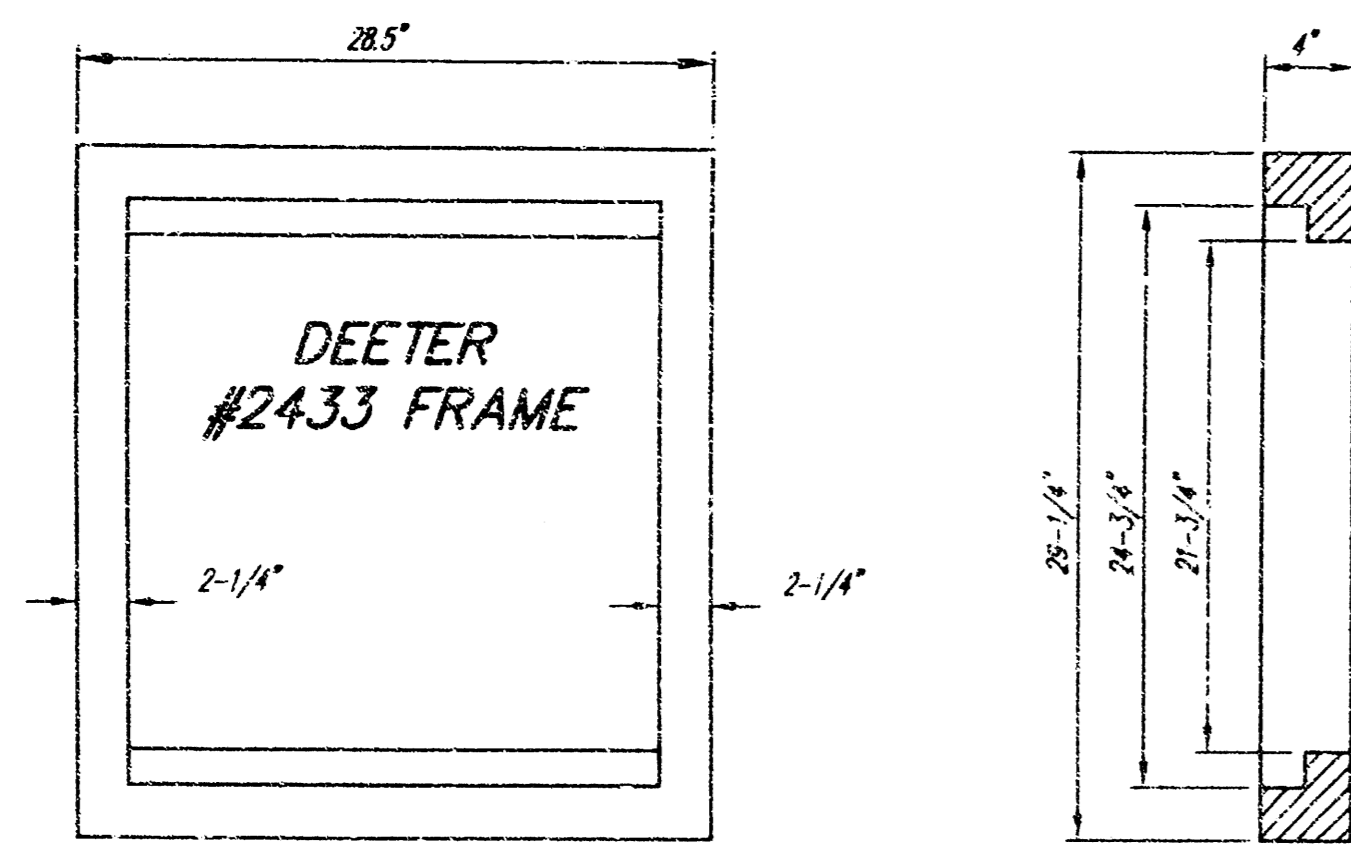
**SWS IMPROVEMENT FACILITY**  
**WEST MAINTENANCE FACILITY**  
 Wichita, Kansas



**Ruggles & Bohm, P.A.**  
 Engineering, Surveying, Land Planning  
 924 North Main  
 Wichita, Kansas 67203  
 www.rbkansas.com

(316) 264-8008  
 (316) 264-4621 fax  
 E-mail: info@rbkansas.com

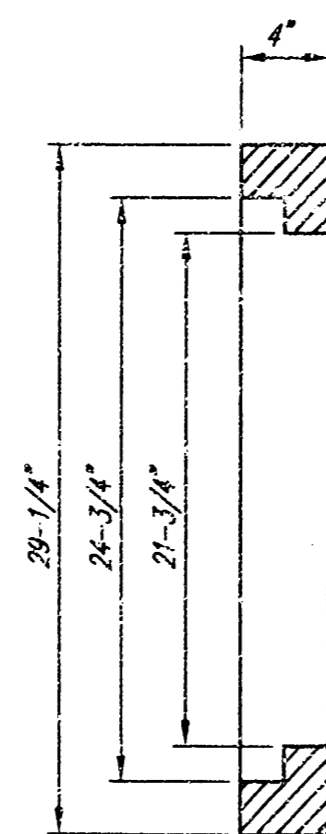
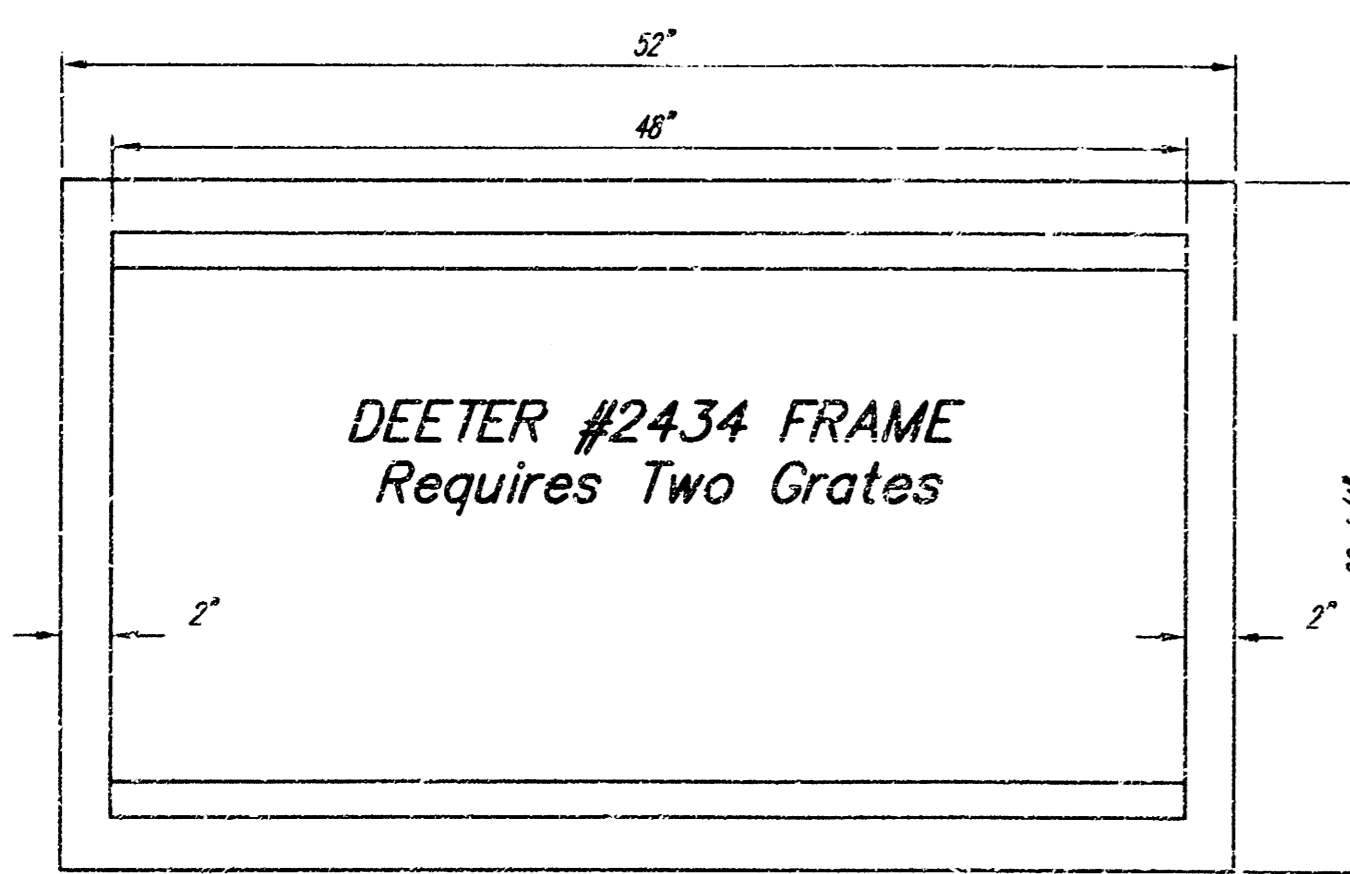
SRB JOB  
 2005 E  
 SHEET  
 2  
 OF  
 3



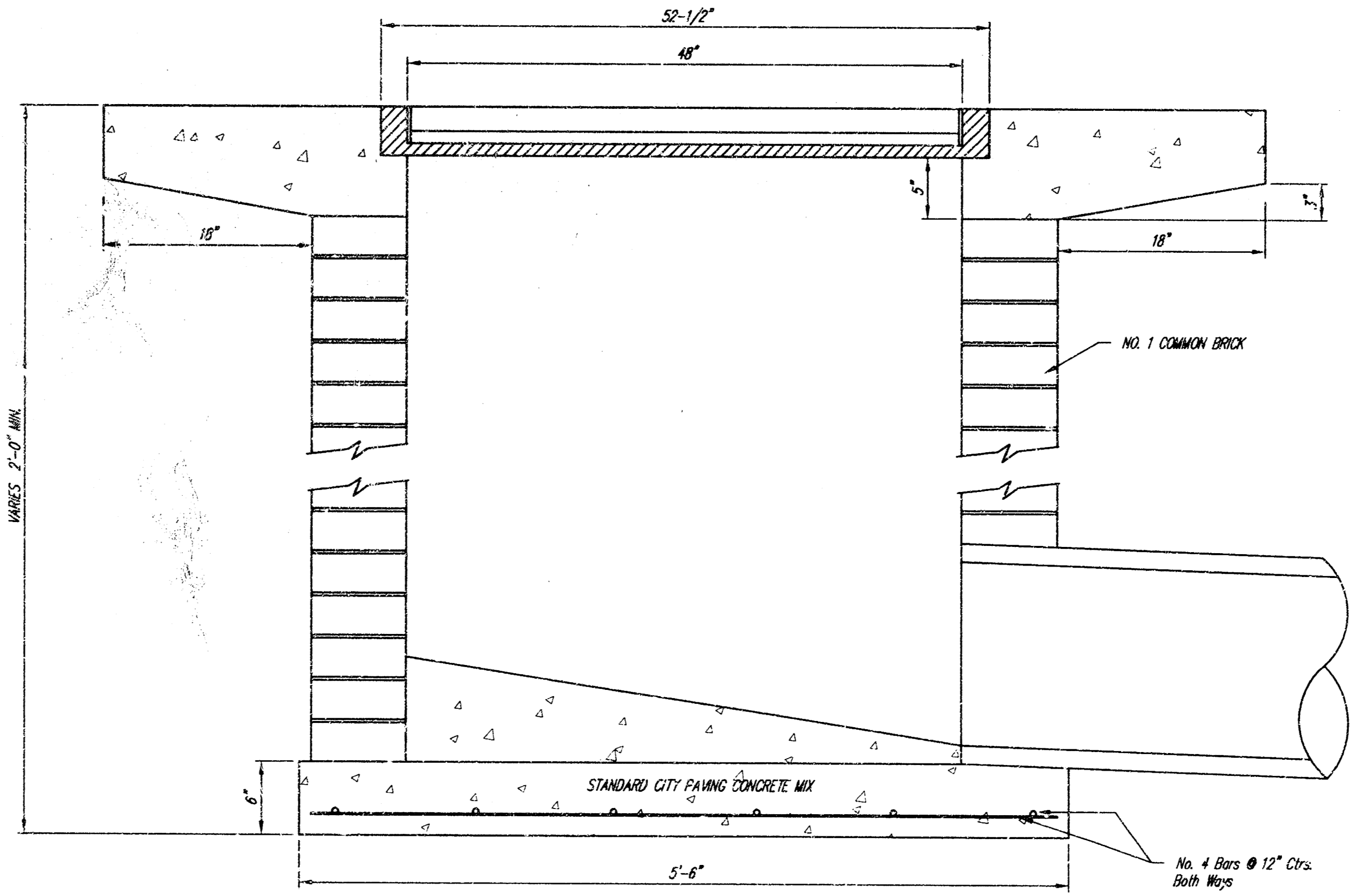
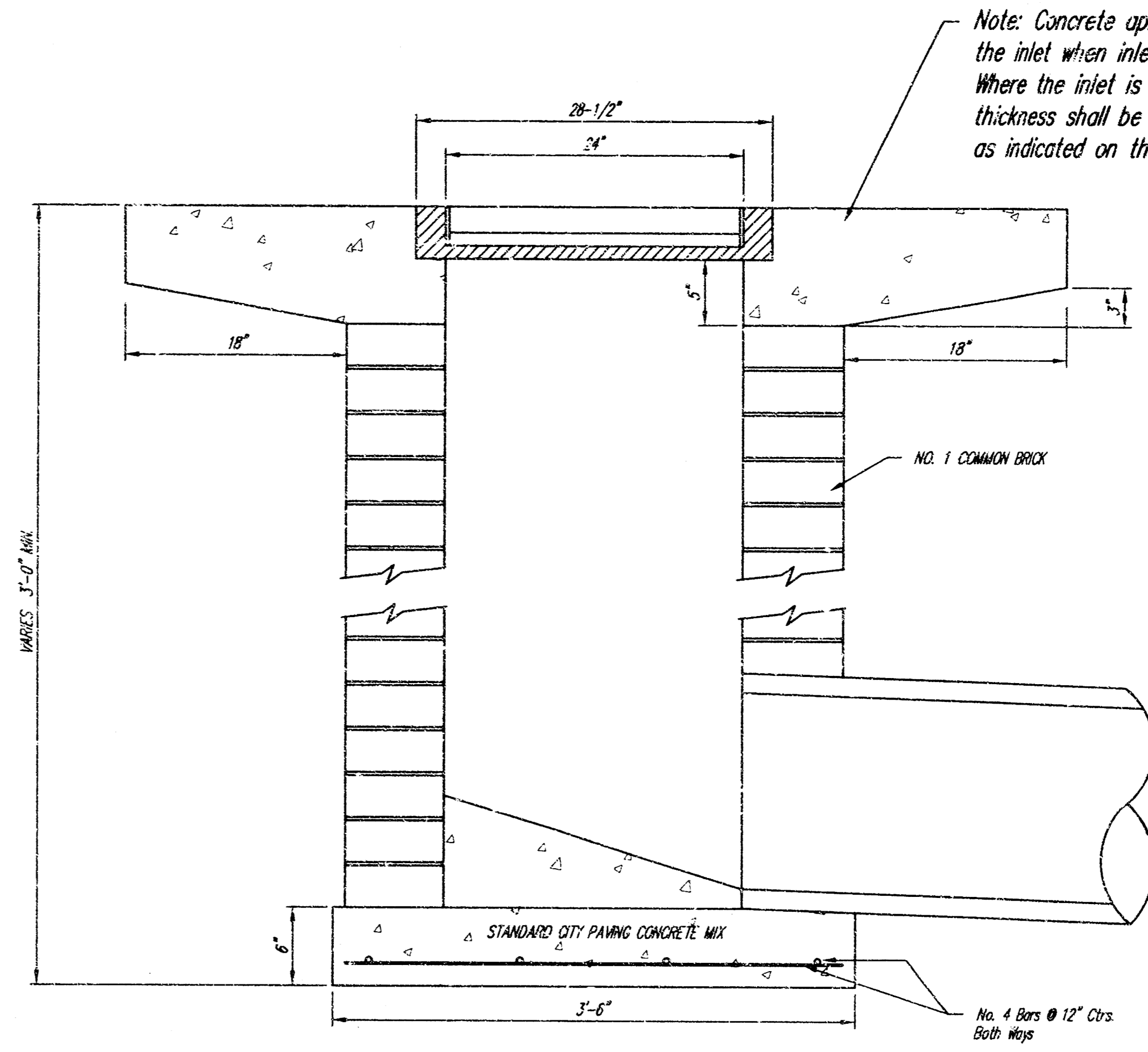
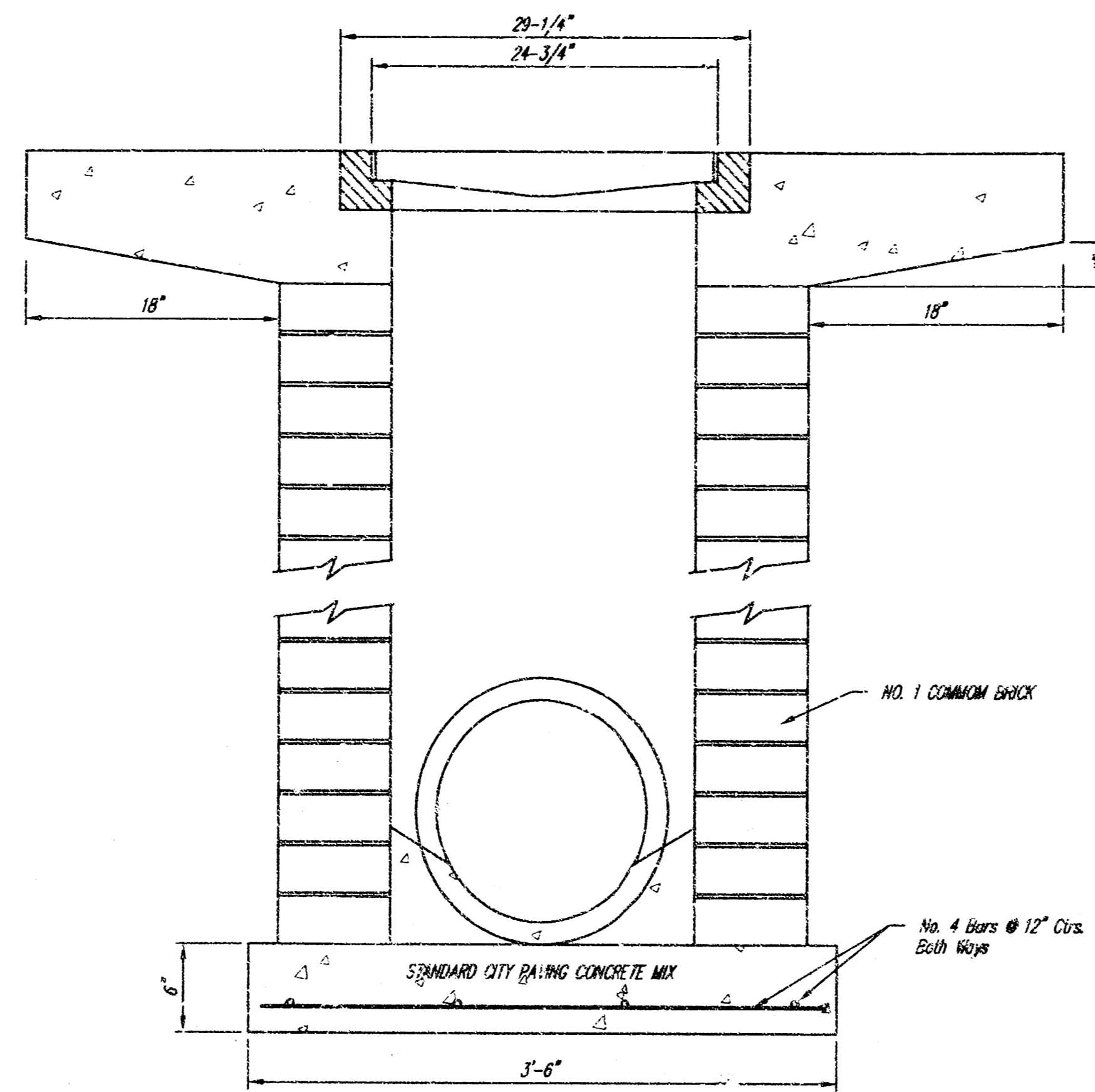
NOTE: Grates shall be imprinted on the top surface with "CITY OF WICHITA" using letters at least 1" in height. Other marking methods may be approved by the engineer.

DEETER #2433 GRATE

24" x 24" Frame and Grate Detail



Double 24" x 24" Frame Detail



<p>CITY ENGINEER'S OFFICE CITY HALL - SEVENTH FLOOR 429 NORTH MAIN STREET WICHITA, KANSAS 67202 (316) 268-4001 (316) 268-4114 FAX</p>	<b>DROP INLET</b> 2'x2' / 2'x4'	
	M. E. LINDEBAK P.E. - CITY ENGINEER	
	PROJECT NUMBER 1198 PPS	OCA # 607861
	DATE MAR 96	SHEET 3 OF 3