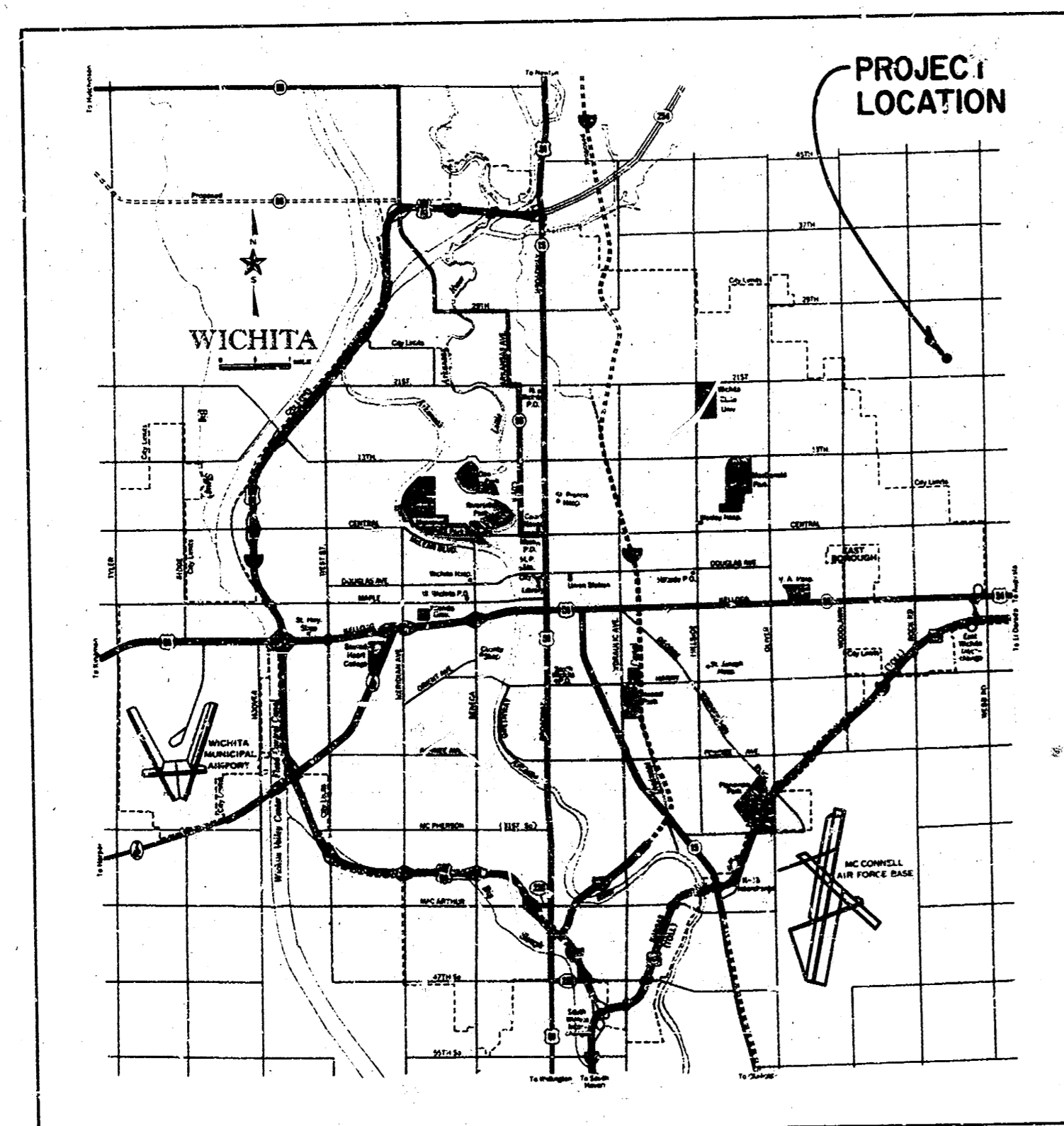


PROJECT NO. 468-76-245-81095-000-000-001
WINDEMERE FLOODWATER
DETENTION RESERVOIR
CONTROL STRUCTURE NO. 12

IN
TALLGRASS

FOR THE CITY OF
WICHITA, KANSAS
R. W. BRUGGEMAN, CITY ENGINEER

MARCH 1981



LOCATION MAP

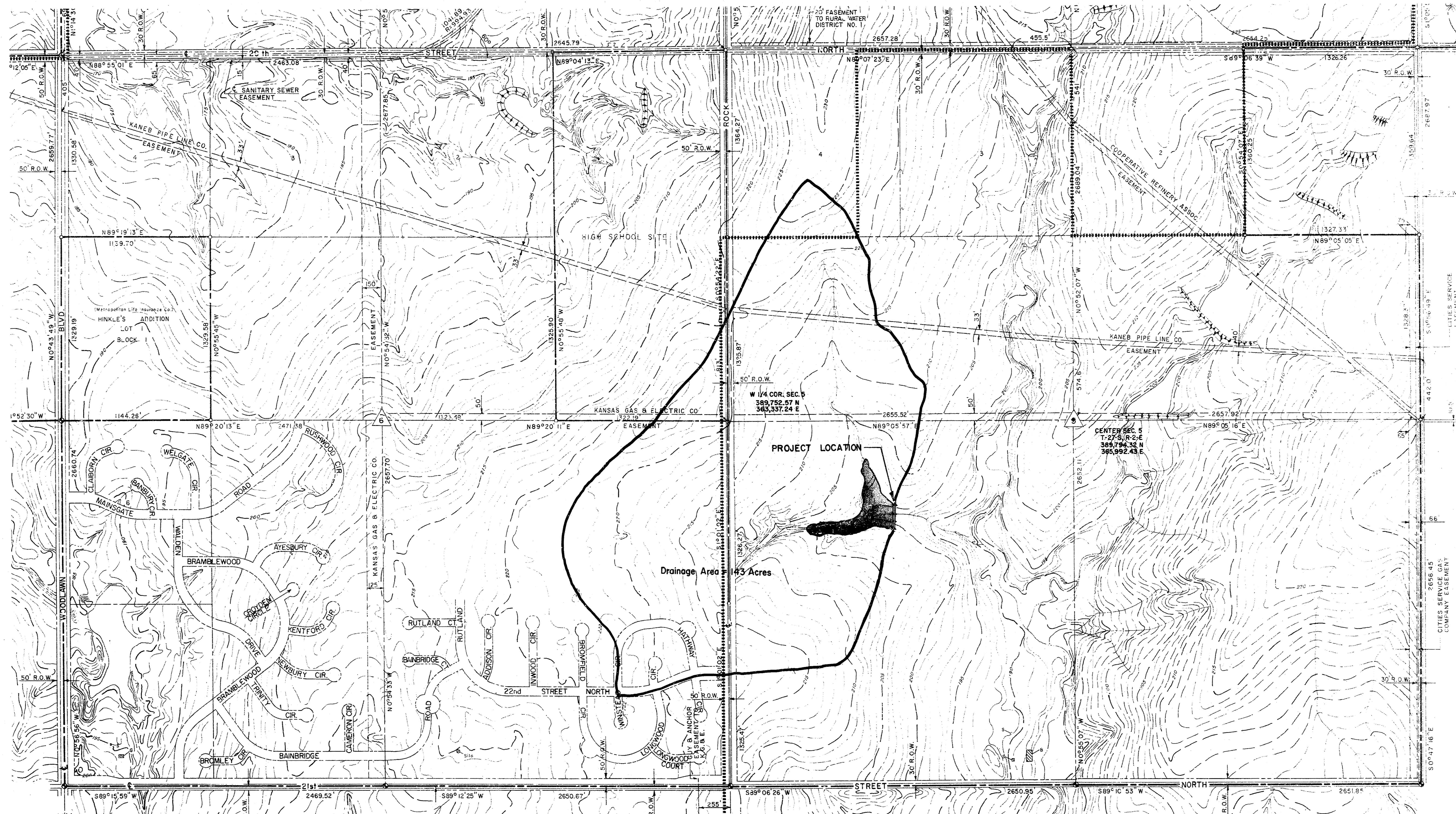
INDEX TO DRAWINGS

1. COVER SHEET
2. DRAINAGE AREA MAP
3. SITE PLAN
4. DETAILS

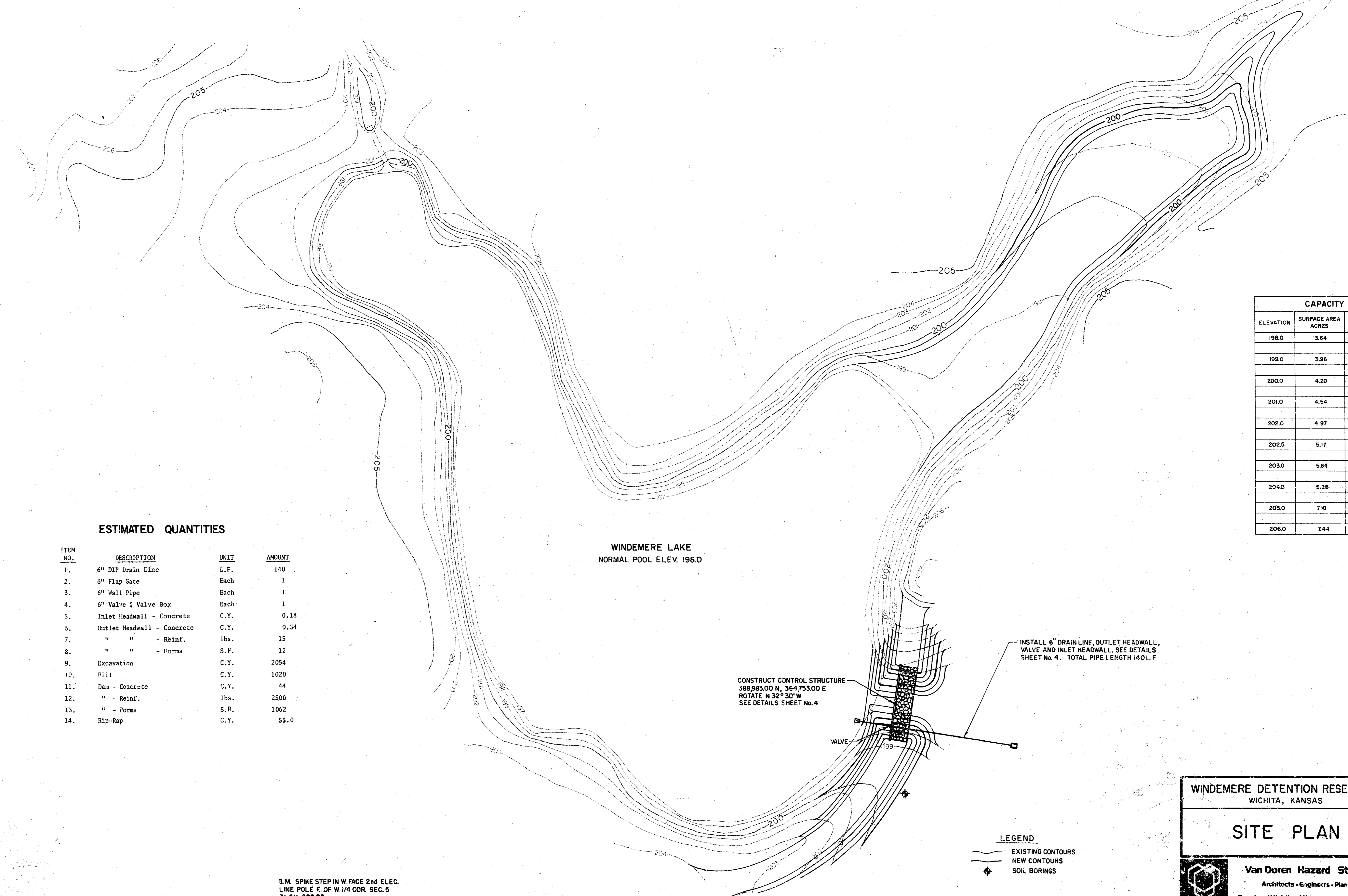
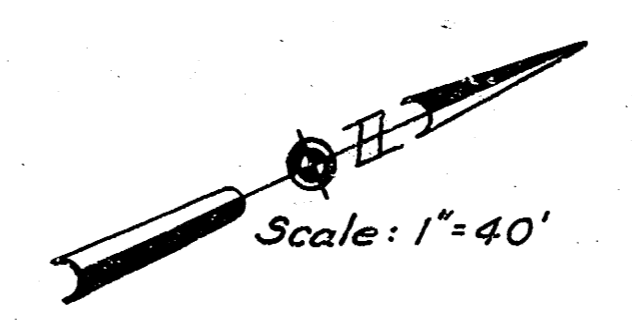
VAN DOREN-HAZARD-STALLINGS
ARCHITECTS-ENGINEERS-PLANNERS
WICHITA, KANSAS

Job No. 79-234





WIDEMERE DETENTION RESERVOIR WICHITA, KANSAS		Design JLM
DRAINAGE AREA MAP		Drawn by KRA
		Checked by JWW
Van Doren - Hazard - Stallings		Date March 1981
Architects • Engineers • Planners		Job no. 79-234
Topeka Wichita Minneapolis		Sheet 2 of 4



WINDEMERE LAKE
NORMAL POOL ELEV. 198.0

ESTIMATED QUANTITIES

ITEM NO.	DESCRIPTION	UNIT	AMOUNT
1.	6" DIP Drain Line	L.F.	140
2.	6" Flap Gate	Each	1
3.	6" Wall Pipe	Each	1
4.	6" Valve & Valve Box	Each	1
5.	Inlet Headwall - Concrete	C.Y.	0.18
6.	Outlet Headwall - Concrete	C.Y.	0.34
7.	" " - Reinf.	lbs.	15
8.	" " - Forms	S.F.	12
9.	Excavation	C.Y.	2054
10.	Fill	C.Y.	1020
11.	Dam - Concrete	C.Y.	44
12.	" - Reinf.	lbs.	2500
13.	" - Forms	S.F.	1062
14.	Rip-Rap	C.Y.	55.0

CAPACITY DATA			
ELEVATION	SURFACE AREA ACRES	STORAGE AC. FT.	CUMULATIVE STORAGE AC. FT.
198.0	3.64	3.80	0
199.0	3.96	4.08	3.80
200.0	4.20	4.37	7.88
201.0	4.54	4.75	12.25
202.0	4.97	2.60	17.00
202.5	5.17	2.70	19.60
203.0	5.64	5.96	22.30
204.0	6.28	6.69	29.26
205.0	7.10	7.27	34.95
206.0	7.44		42.22

CONSTRUCT CONTROL STRUCTURE
388.983.00 N, 364.753.00 E
ROTATE N 32° 30' W
SEE DETAILS SHEET No. 4

INSTALL 6" DRAIN LINE, OUTLET HEADWALL,
VALVE AND INLET HEADWALL. SEE DETAILS
SHEET No. 4. TOTAL PIPE LENGTH 140 L.F.

LEGEND
 --- EXISTING CONTOURS
 --- NEW CONTOURS
 ◆ SOIL BORINGS

3.M SPIKE STEP IN W FACE 2nd ELEC.
LINE POLE E. OF W 1/4 COR. SEC. 5
ELEV. 208.02

WINDEMERE DETENTION RESERVOIR WICHITA, KANSAS		Design J.W.
SITE PLAN		Drawn by M.W.B.
Van Doren Hazard Stallings Architects • Engineers • Planners Topeka • Wichita • Minneapolis • Kansas City		Checked by J.W.
		Date March 1981
		Job no. 79-234
		Sheet 3 of 4

