

SHEET NO.	TOTAL SHEETS
1	3

CITY OF WICHITA, KANSAS
 MICHAEL E. LINDEBAK, P.E., CITY ENGINEER

STORM WATER DRAIN NO.

FOR
 CAMBRIDGE ESTATES AND SUMMERFIELD III COMMERCIAL
 CITY OF WICHITA PROJECT NO. 468-76-245-82096-000-000-001

INDEX NO. 750213

INDEX OF SHEETS

1. TITLE SHEET
2. PLAT
3. POND SEALING PLAN

GENERAL NOTES

CONTRACTOR SHALL SATISFY HIMSELF OF SUBSURFACE CONDITIONS PRIOR TO CONSTRUCTION.

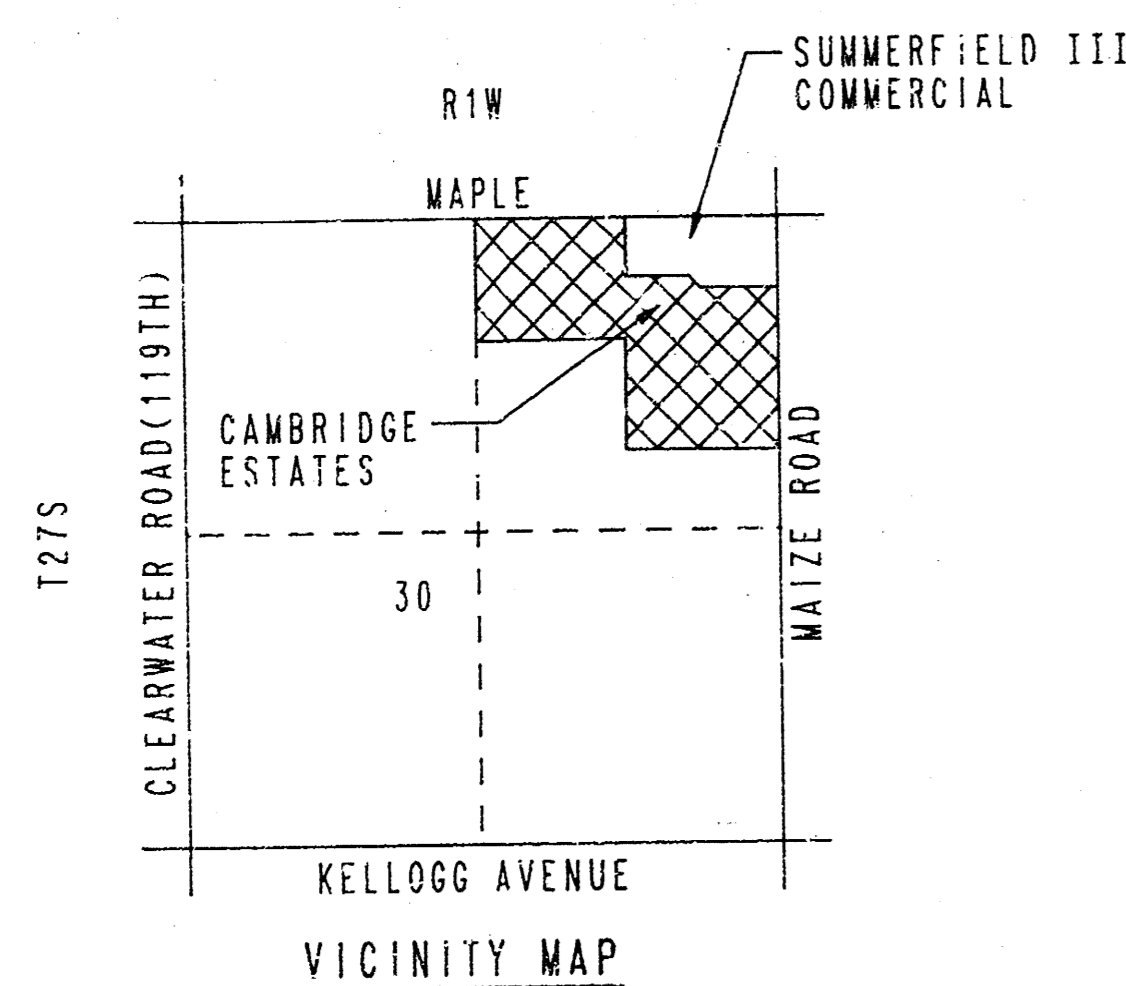
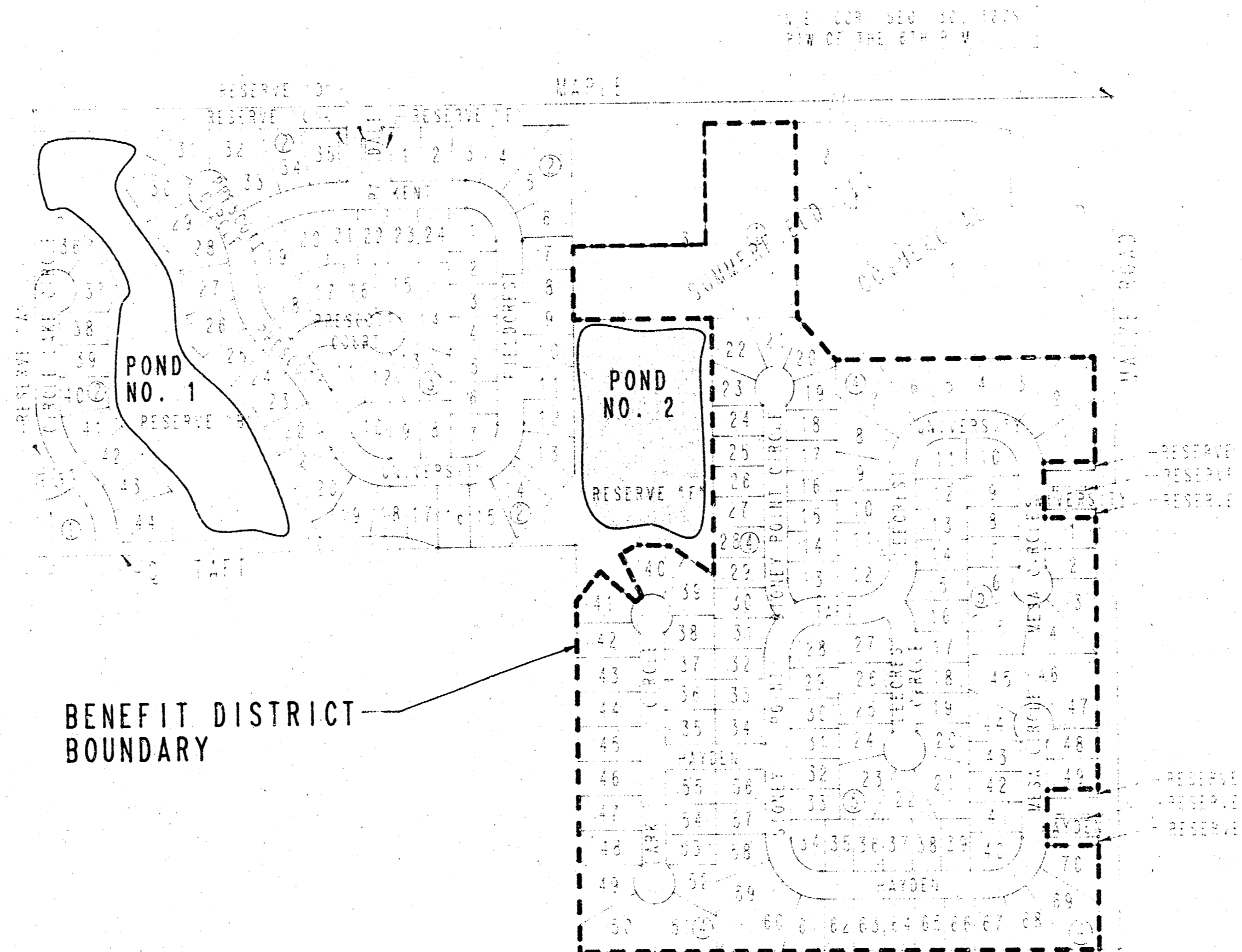
THE CONTRACTOR SHALL BE RESPONSIBLE FOR PRESERVING PRE-ERTY IRONS. THE CONTRACTOR WILL BE REQUIRED TO RE-ESTABLISH ANY PROPERTY IRONS WHICH ARE DAMAGED OR DESTROYED BY HIS CONSTRUCTION OPERATIONS. SUCH IRONS SHALL BE RE-ESTABLISHED BY A LICENSED LAND SURVEYOR IN ACCORDANCE WITH STATE LAWS.

CONTRACTOR WILL BE REQUIRED TO PROVIDE A MINIMUM ADVANCE NOTICE OF TWENTY-FOUR (24) HOURS TO UTILITY COMPANIES PRIOR TO STARTING ANY EXCAVATION AS FOLLOWS:

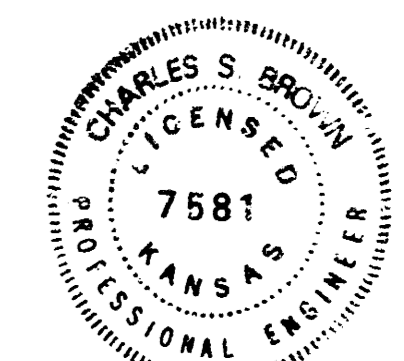
SOUTHWESTERN BELL TELEPHONE COMPANY	1-316-571-2611
CABLEVISION	262-4270 OR 263-2061
KPL GAS SERVICE	263-7511
KANSAS GAS & ELECTRIC	264-1141
CITY OF WICHITA WATER DEPARTMENT	266-4808
CITY OF WICHITA SEWER DEPARTMENT	266-4071
ARKLA GAS COMPANY	942-8350 OR 263-8161

PROJECT SURVEY CONTROL

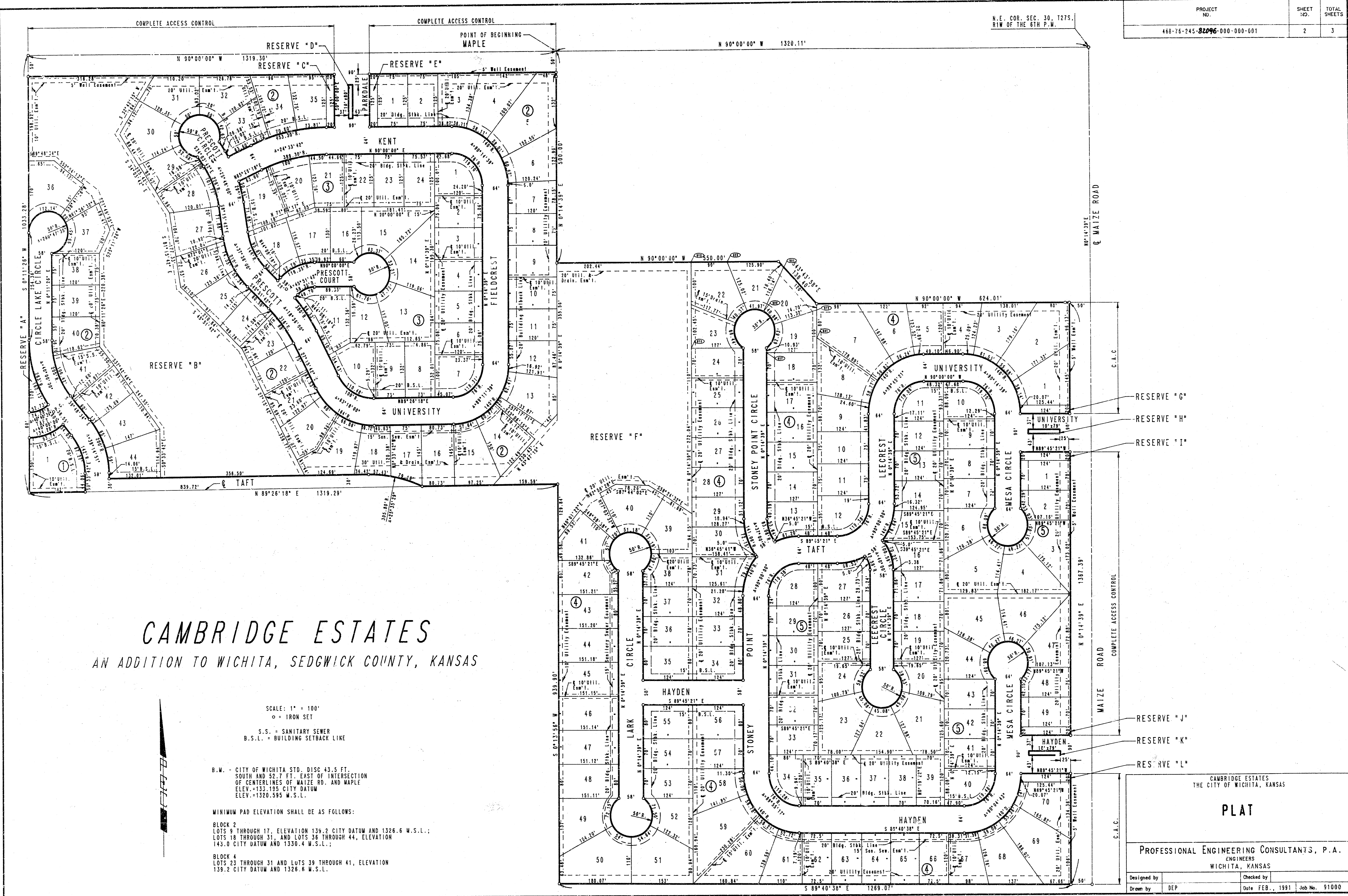
- PROJECT DATUM : CITY OF WICHITA DATUM
- DATUM BENCH MARK: CITY DISC 43.5' S. AND 52.7' E. OF INTERSECTION OF CENTERLINES MAIZE ROAD AND MAPLE. ELEV. +133.195
- BENCH MARK : CHISELED "D" ON BACK OF CURB S. END CONCRETE MEDIAN IN PRESCOTT ON N. SIDE OF MAPLE AT ENTRANCE TO OAK CLIFF ESTATES. ELEV. +147.375
- BENCH MARK : RAILROAD SPIKE IN S.W. FACE 18' ELW 5' E. OF S.W. CORNER LOT 21, BLOCK 3. ELEV. +145.345
- BENCH MARK : RAILROAD SPIKE IN W. FACE 24' ELW IN E.-W. TREE ROW ON N. LINE HIDDEN LAKES ESTATES NEAR S.W. CORNER RESERVE "F", S.E. CORNER LOT 14, BLOCK 2. ELEV. +137.01
- BENCH MARK : RAILROAD SPIKE IN E. FACE 38' ELW NEAR S.E. CORNER RESERVE "B" APPROXIMATELY 20' N. OF ASPHALT ROAD AT N. EDGE HIDDEN LAKES ESTATES. ELEV. +139.27
- BENCH MARK : CHISELED "D" ON S. HEADWALL ROB ON MAPLE APPROX. 85' E. OF N. 1/4 CORNER SEC. 30, T27S, R1W. STA. 102+77, 15' RT. ELEV. +143.035



FEBRUARY, 1991
 PLANS PREPARED BY
 PROFESSIONAL ENGINEERING CONSULTANTS, P.A.
 ENGINEERS
 WICHITA, KANSAS



1



CAMBRIDGE ESTATES
AN ADDITION TO WICHITA, SEDGWICK COUNTY, KANSAS

SCALE: 1" = 100'
 ○ = IRON SET
 S.S. = SANITARY SEWER
 B.S.L. = BUILDING SETBACK LINE
 B.M. - CITY OF WICHITA STD. DISC 43.5 FT. SOUTH AND 52.7 FT. EAST OF INTERSECTION OF CENTERLINES OF WATZE RD. AND MAPLE ELEV. = 1320.195 CITY DATUM ELEV. = 1320.595 W.S.L.
 MINIMUM PAD ELEVATION SHALL BE AS FOLLOWS:
 BLOCK 2
 LOTS 9 THROUGH 17, ELEVATION 139.2 CITY DATUM AND 1326.6 W.S.L.;
 LOTS 18 THROUGH 31, AND LOTS 36 THROUGH 44, ELEVATION 143.0 CITY DATUM AND 1330.4 W.S.L.;
 BLOCK 4
 LOTS 23 THROUGH 31 AND LOTS 39 THROUGH 41, ELEVATION 139.2 CITY DATUM AND 1326.6 W.S.L.

CAMBRIDGE ESTATES
THE CITY OF WICHITA, KANSAS

PLAT

PROFESSIONAL ENGINEERING CONSULTANTS, P.A.
ENGINEERS
WICHITA, KANSAS

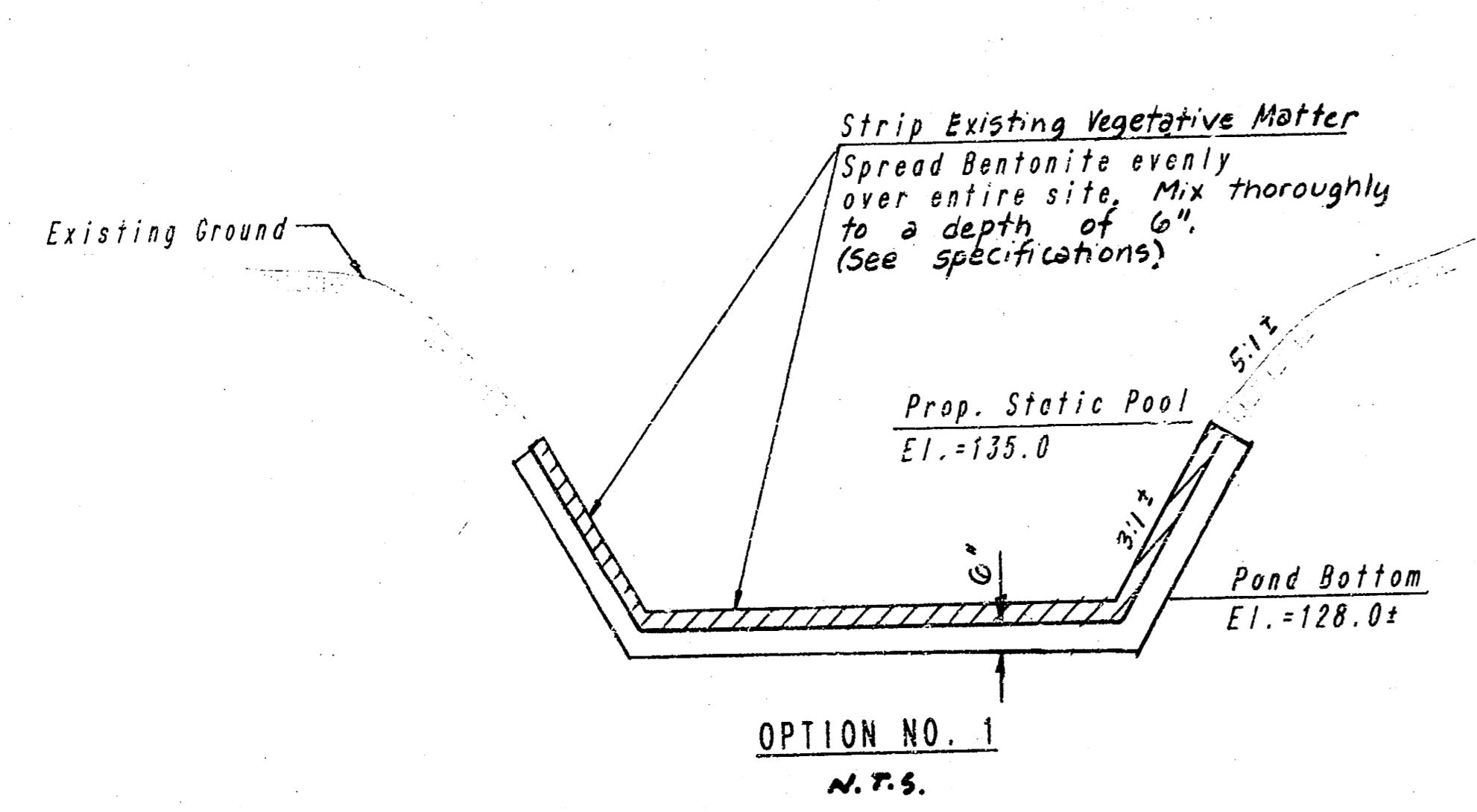
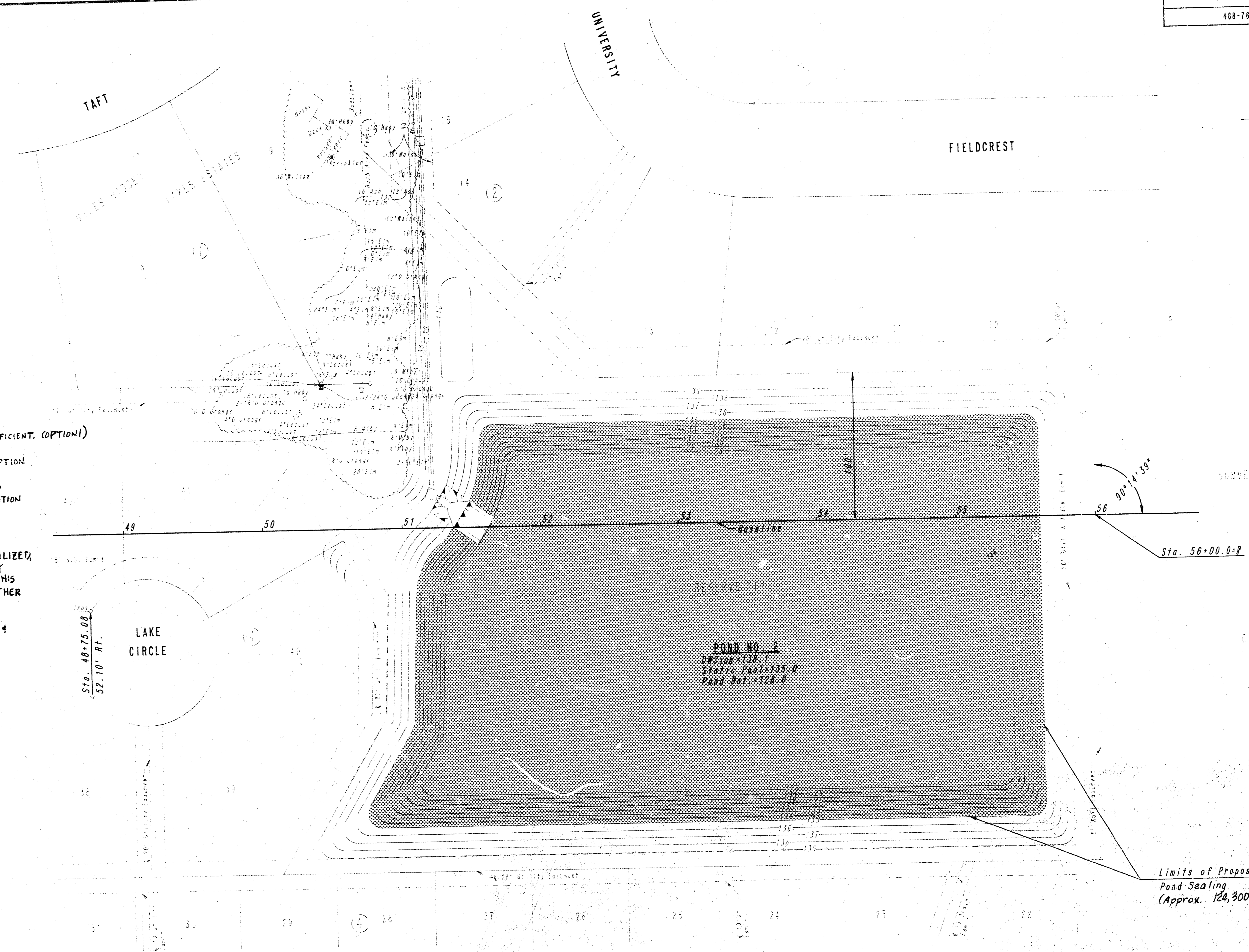
Designed by	Checked by
Drawn by DEP	Date FEB., 1991 Job No. 91000

PROJECT NO.	SHEET NO.	TOTAL SHEETS
488-76-245-8206-000-000-001	3	3

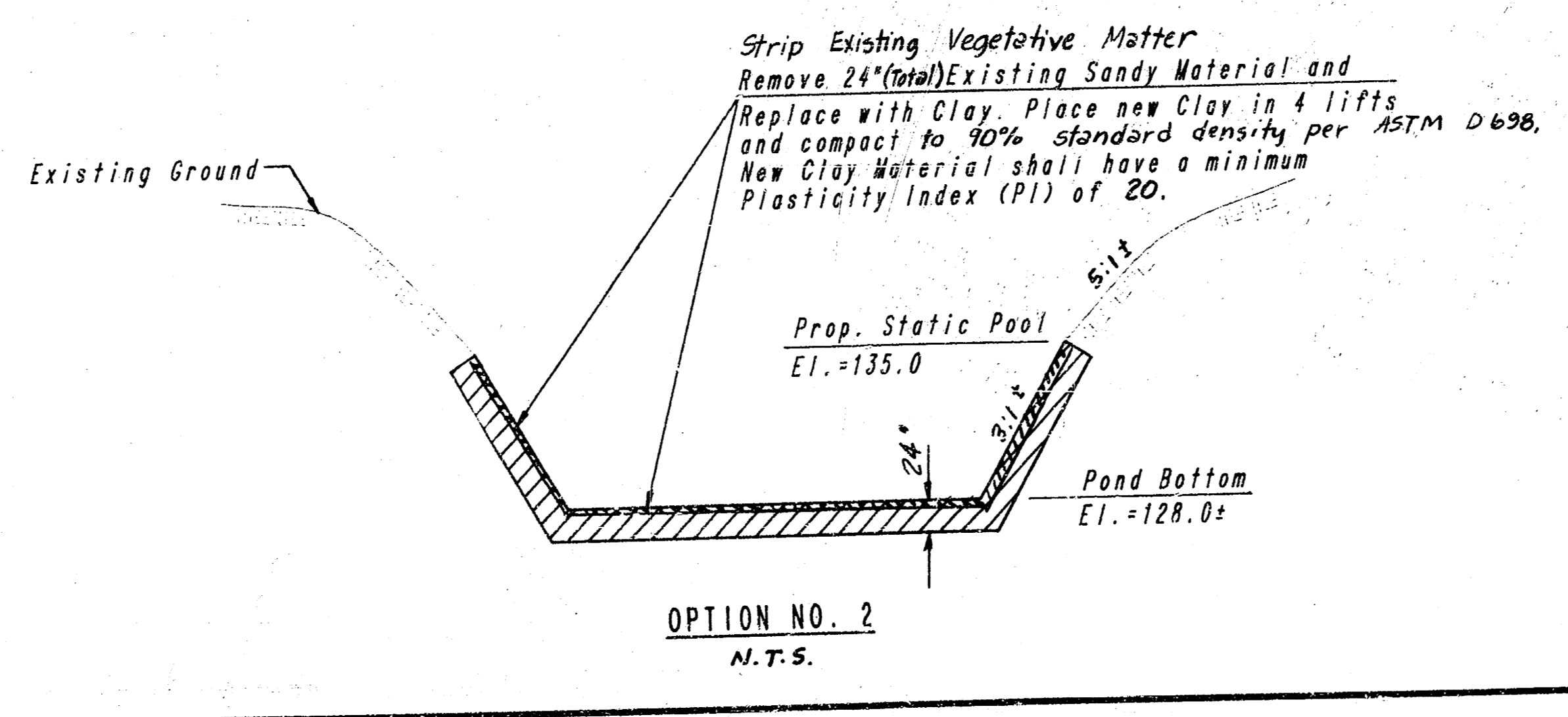
SCALE: 1" = 40'

NOTES

1. CONTOURS SHOWN ARE BASED ON ORIGINAL DESIGN PLANS AND ARE NOT FIELD-VERIFIED.
2. ALL ELEVATIONS BASED ON CITY OF WICHITA DATUM.
3. [Hatched Area] INDICATES LIMITS OF PROPOSED POND SEALING.
4. EXCESS MATERIAL (OPTION 2) SHALL BE PLACED WITHIN CAMBRIDGE ESTATES OR SUMMERFIELD (1) COMMERCIAL ADDITION, AND SHALL BE COMPACTED PER KDOT TYPE B WR 90. SAID PLACEMENT AND COMPACTON SHALL BE APPROVED BY BOTH THE CITY OF WICHITA AND THE DEVELOPER.
5. AN UNDERGROUND SPRINKLER SYSTEM AND A WATER WELL HAS BEEN INSTALLED BY THE DEVELOPER WITHIN RESERVE "F" ADJACENT TO THE POND. THE CONTRACTOR SHALL USE EXTREME CAUTION TO PREVENT DAMAGE TO SAID IRRIGATION SYSTEM. ANY DAMAGE CAUSED BY THE CONTRACTOR SHALL BE REPAIRED AT NO COST TO THE CITY OR DEVELOPER.
6. IT IS THE INTENT OF THIS PROJECT TO OBTAIN A HIGHLY IMPERMEABLE LAYER BELOW THE STATIC POOL ELEVATION OF 135.0 SO THAT THE POND WILL HOLD APPROXIMATELY 7" OF WATER. WATER-TIGHTNESS OF THE POND SHALL BE APPROVED BY THE CITY AND BY THE DEVELOPER PRIOR TO FINAL PAYMENT. SEE SPECS FOR REQUIRED PERMEABILITY COEFFICIENT (OPTION 1)
7. THE CONTRACTOR HAS THE OPTION TO PLACE BENTONITE WITHIN THE SPECIFIED LIMITS OR TO REMOVE SAND AND REPLACE WITH CLAY (SEE OPTION DETAILS THIS SHEET.)
8. STRIPPINGS (OPTION 1 AND OPTION 2) SHALL BE HAULED OFF SITE AND DISPOSED OF BY CONTRACTOR. EXCAVATION AND HAULING OF STRIPPINGS SHALL BE CONSIDERED SUBSIDIARY TO OTHER WORK ITEMS.
9. DISTURBED AREAS WITHIN RESERVE "F" AND ABOVE STATIC POOL (ELEV. 135.0) SHALL BE SEEDED, FERTILIZED, AND MULCHED IN ACCORDANCE WITH THE CITY STANDARD SPECIFICATIONS (LATEST EDITION). THIS WORK SHALL BE CONSIDERED SUBSIDIARY TO OTHER WORK ITEMS.
10. THE CONTRACTOR SHALL OBTAIN TEMPORARY ACCESS & CONSTRUCTION EASEMENTS FROM THE DEVELOPER AS REQUIRED PRIOR TO CONSTRUCTION.
11. DEVELOPER: THURMAN W. SMITH
12219 WEST SHERIAC
WICHITA, KS
BUS. PHONE 721-1166



OPTION NO. 1
N.T.S.



OPTION NO. 2
N.T.S.

ESTIMATED QUANTITIES

OPTION NO. 1	Bentonite	280 Ton*
OPTION NO. 2	Excavation	9,207 C.Y.†
	select Fill (clay)	9,207 C.Y.

* Based on 4.5 lb./sq.F. (see specs)
† Based on 24" depth (includes strippings)

CAMBRIDGE ESTATES
THE CITY OF WICHITA, KANSAS

POND SEALING PLAN

PROFESSIONAL ENGINEERING CONSULTANTS,
ENGINEERS
WICHITA, KANSAS

Designed by: CSB, GDD
Checked by: DEP
Drawn by: DEP
Date: FEB. 1991
Job No.: 81030