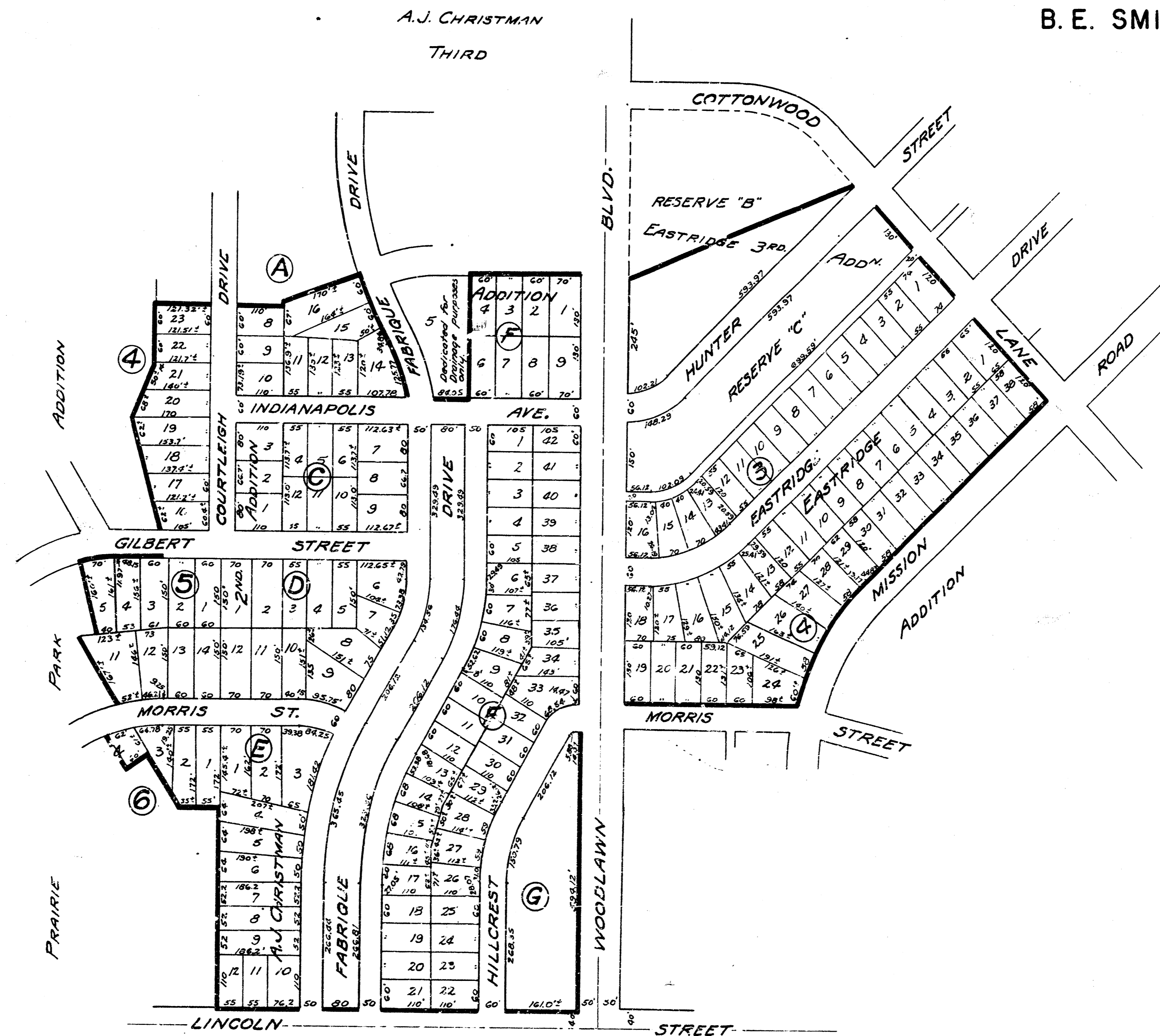


BENEFIT DISTRICT STORM WATER DRAIN
 DISTRICT NO. 9
 CITY OF WICHITA KANSAS

A.J. CHRISTMAN
 THIRD

B. E. SMITH CITY ENGINEER

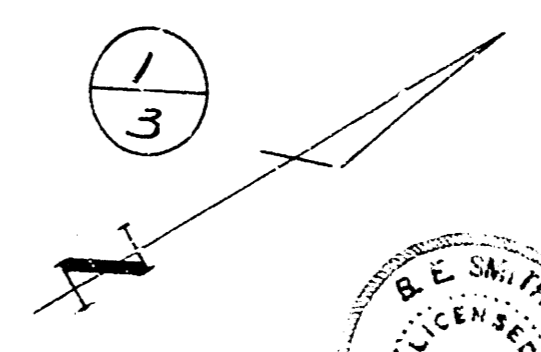
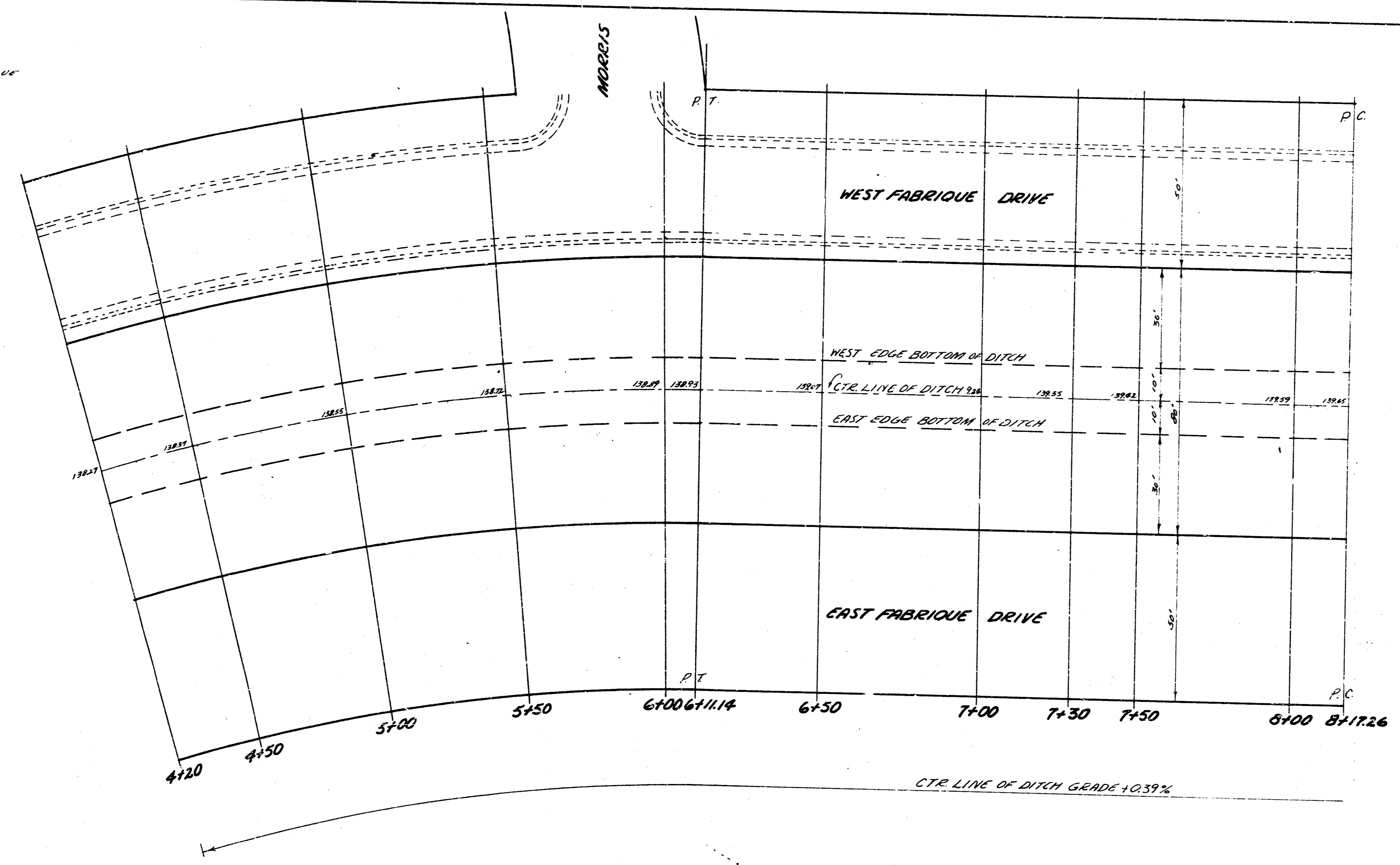


May 25, 1953

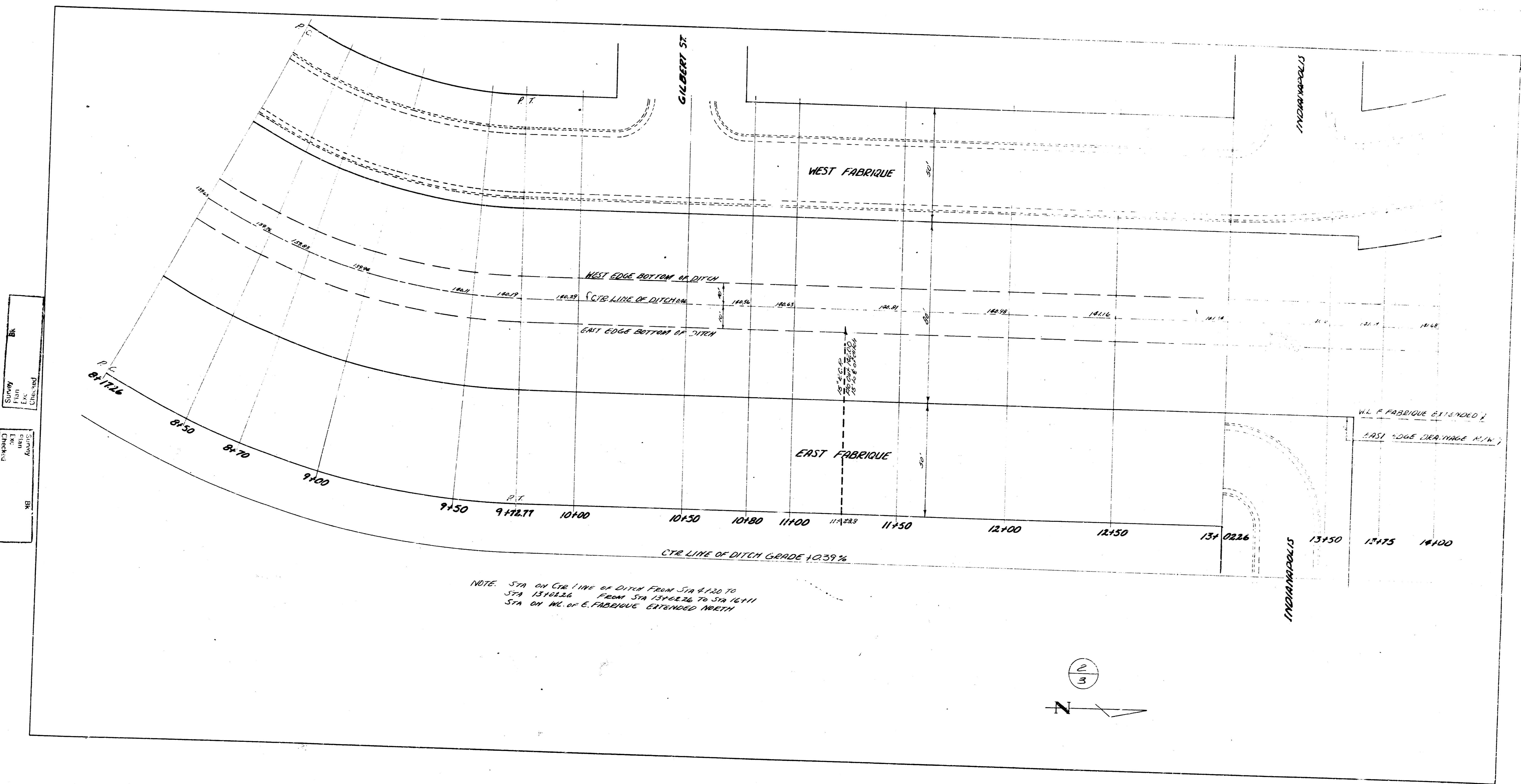
(J.L.A.)

BM 153.40 STANDARD 1/2" WOOD LAMIN 4" LINCOLN
 BM 151.67 7/8" IN RITCHIE W.G. LINCOLN W.G. WOOD LAMIN
 BM 148.84 1" ON E. END CORNER LINCOLN ST. BRIDGE @ FABRIQUE
 BM 145.72 1/2" IN W. RITCHIE N. Co. MOORE W.L.N. FABRIQUE
 BM 142.50 1/2" IN E. RITCHIE S. Co. GIBBERT W.L.N. FABRIQUE
 BM 142.59 1/2" IN W. RITCHIE S. Co. INDIANAPOLIS W.L.N. FABRIQUE
 BM 146.67 5/8" ON ARCH 1/4" TO S. WOOD LAMIN

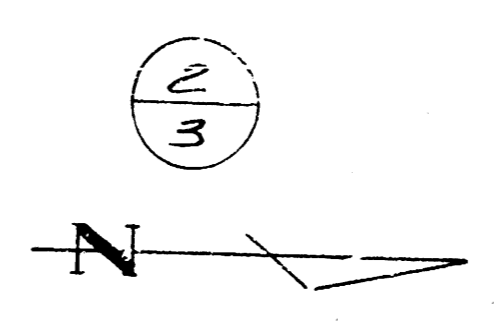
NOTE Sta 0+00 N.A. LINCOLN & CTR. LINE DITCH
 Sta on CTR. LINE DITCH FROM STA 4+20 TO
 STA 13+02.26
 Sta on W. & FABRIQUE EXTENDED FROM STA
 13+02.26 TO STA 14+00



STORM WATER DRAIN
 DISTRICT NO. 9
 420' N. LINCOLN TO S.W.S. N. INDIANAPOLIS
 CITY OF WICHITA
 BESMITH CITY ENGINEER
 JULY 1953 PROJECT C23-28



NOTE: STA ON CTR. LINE OF DITCH FROM STA 9+00 TO
 STA 13+02.26 FROM STA 13+02.26 TO STA 14+100
 STA ON W.L. OF E. FABRIQUE EXTENDED NORTH



Survey
 Plan
 No. 100
 Date
 1911

