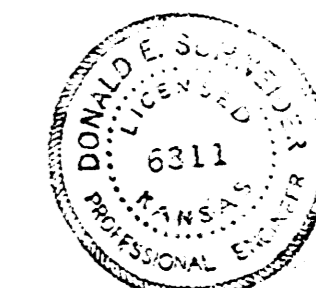
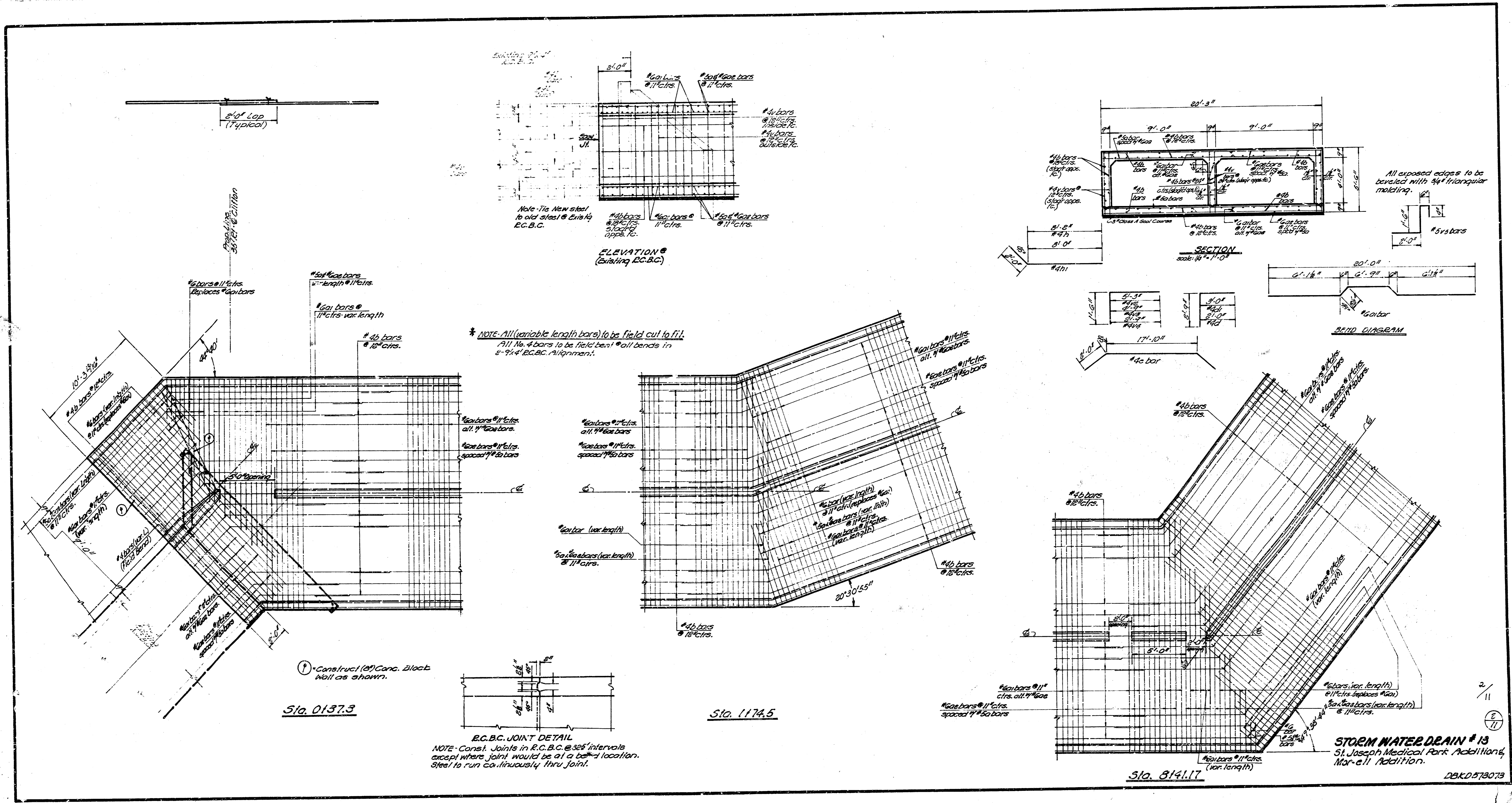


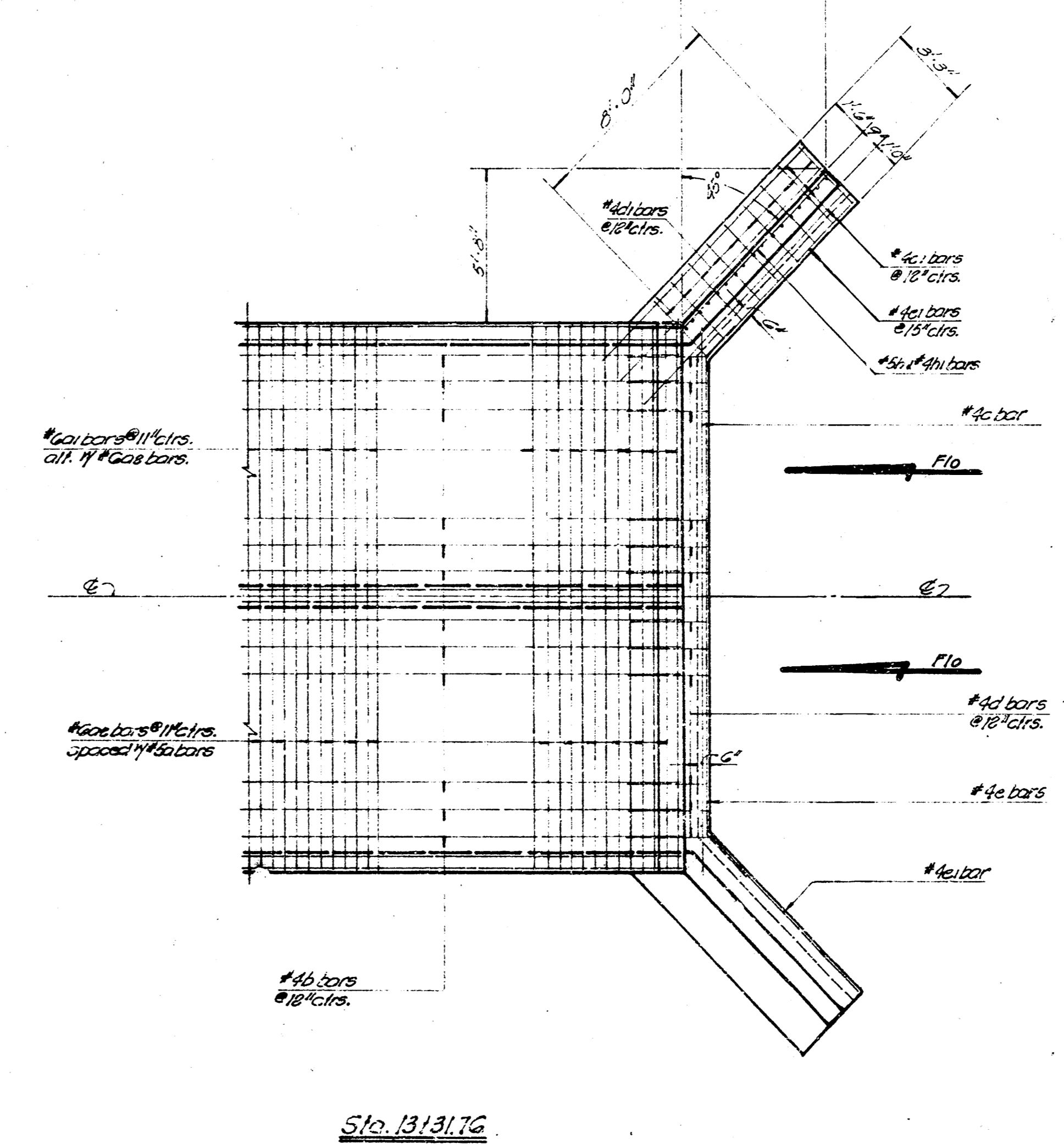
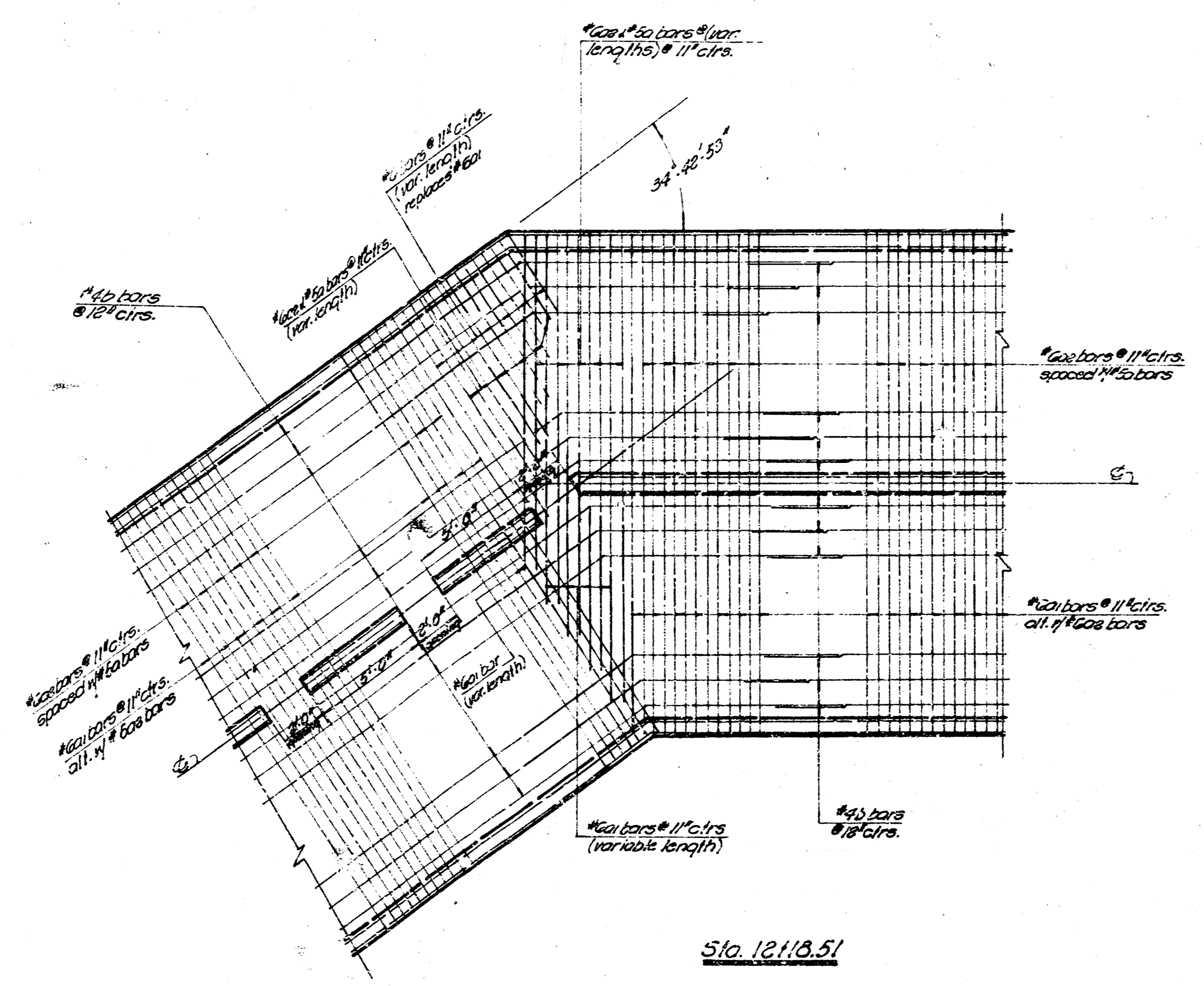
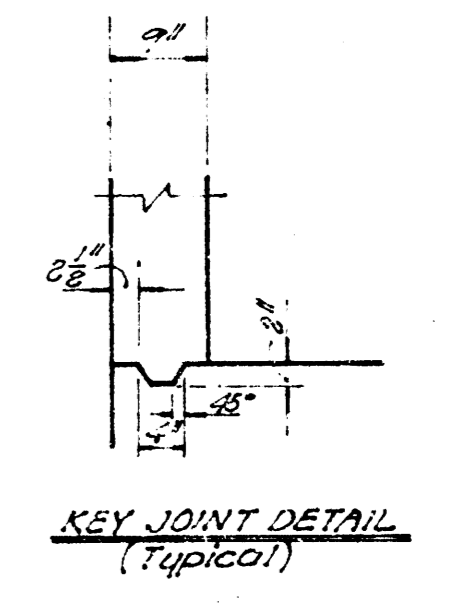
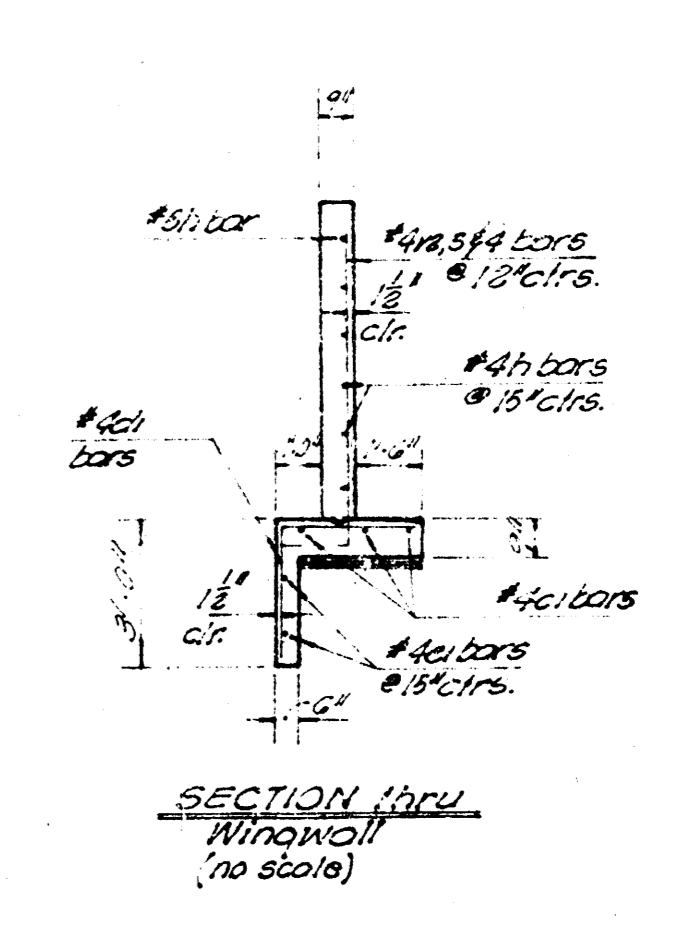
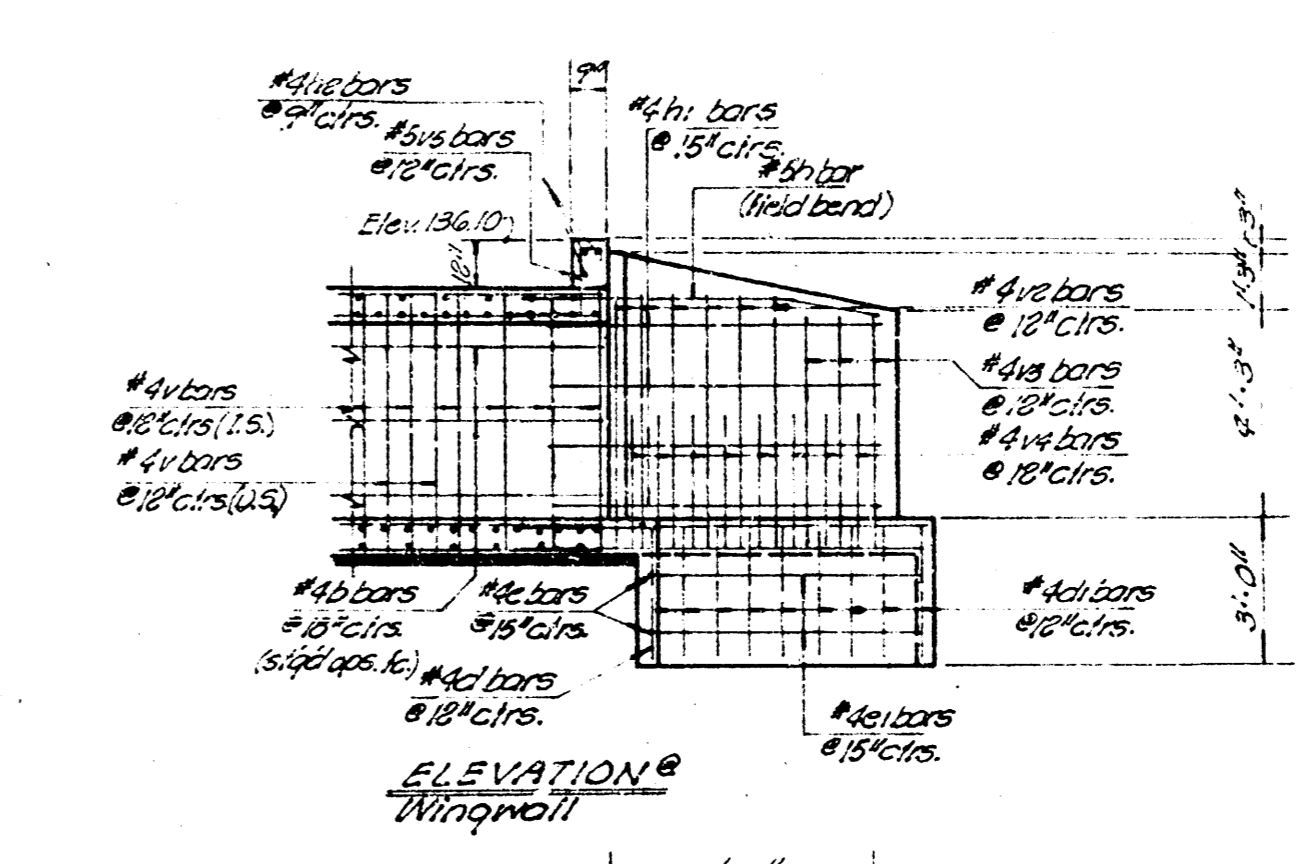
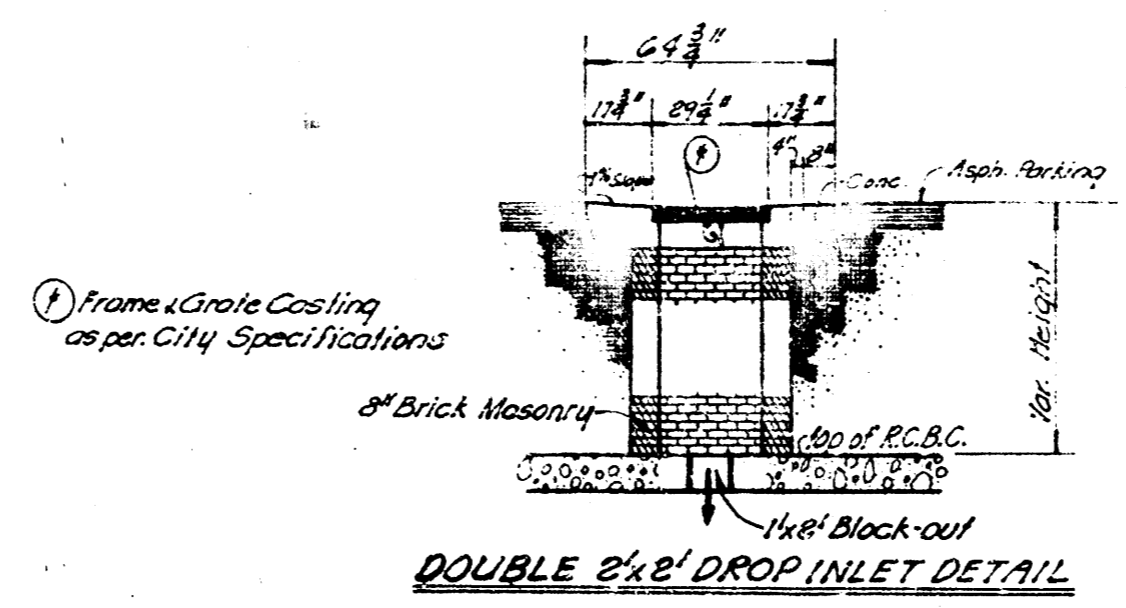
1773  
 Plan Sheet 1/2  
 1773



STORM WATER DRAIN # 13  
 St. Joseph Medical Park Addition  
 Morrell Addition  
 MAY 1974  
 D9KD-573073



- GENERAL NOTES
- CLASS A-E CONCRETE - SHALL BE USED THROUGHOUT CULVERT CONSTRUCTION. ALL REINFORCING STEEL SHALL CONFORM TO A.S.T.M. SPECIFICATIONS.
  - EARTHWORK - ALL EARTH WORK SHALL BE CONSIDERED AS "COMMON EXCAVATION" EXCEPT FOR THE WALL EXCAVATION WHICH SHALL BE INCLUDED IN LUMP SUM BID OF R.C.S.C. ALL MATERIALS SUITABLE FOR BACKFILL TO REMAIN ON PROJECT.
  - BACKFILL - SHALL BE COMPACTED TO TOP OF NEW STRUCTURE. ALL BACKFILL AND EXCAVATION TO EXCEED TO (2') BEYOND WALLS OF BOX AND WING WALLS. BACKFILL OF WING WALLS TO BE FREQUENTLY HAND TAMPED OR EQUAL AS DIRECTED BY FIELD ENGINEER. THIS WORK TO BE CONSIDERED AS PART OF C.Y. CONTRACTED FILL AND WILL BE INCLUDED IN "LUMP SUM BID" OF R.C.S.C.
  - SEAL COURSE - CONSISTING OF (3") CLASS (A) CONCRETE SHALL BE CONSTRUCTED ONLY WHERE SPECIFIED ON PLANS OR BY THE ENGINEER. NO REINFORCING STEEL SHALL BE PLACED IN SEAL COURSE UNLESS GAINED SUFFICIENT STRENGTH TO PERMIT WORKING UPON IT WITHOUT INJURY. THIS ITEM SHALL BE PAID AS PLAN QUANTITY IF USED.
- BIDDING OF CULVERT - THE CULVERT SHALL BE BIDD AS A "LUMP SUM BID" EXCEPT FOR THE FOLLOWING ITEMS: CLASS (A) CONCRETE, DOUBLE 2' x 2' INLETS, CLEARING OF RIGHT-OF-WAY. THE INSTALLATION OF STEPS OUTS FOR STORM WATER LEADS TO BE CONSIDERED A PART OF THE LUMP SUM BID OF R.C.S.C. THE ITEMS IN THE "BILL OF MATERIALS" AND THE "BAR SCHEDULE" ARE FOR ESTIMATING PURPOSES ONLY. THE CONTRACTOR IS TO VERIFY CAREFULLY THE QUANTITIES AND THE ENGINEER ASSUMES NO RESPONSIBILITY FOR THEIR ACCURACY. THE CONTRACTOR WILL HAVE FULL RESPONSIBILITY FOR PROVIDING ALL MATERIALS SHOWN ON THE DETAILED PLANS NECESSARY TO COMPLETE THIS PROJECT.



SUMMARY OF QUANTITIES

CLASS A-E CONCRETE	1924.05 cu. yds.
COMMON EXCAVATION	8512.2 cu. yds.
COMPACTED BACKFILL	1529.9 cu. yds.
REINFORCING STEEL	316,620.0 lbs.
DOUBLE 2' x 2' INLETS	3 each
CLEARING OF RIGHT-OF-WAY	LUMP SUM
CLASS (A) CONCRETE (SEAL COURSE)	245.0 cu. yds.
CONCRETE BLOCK WALLS	19.3 lin. ft.

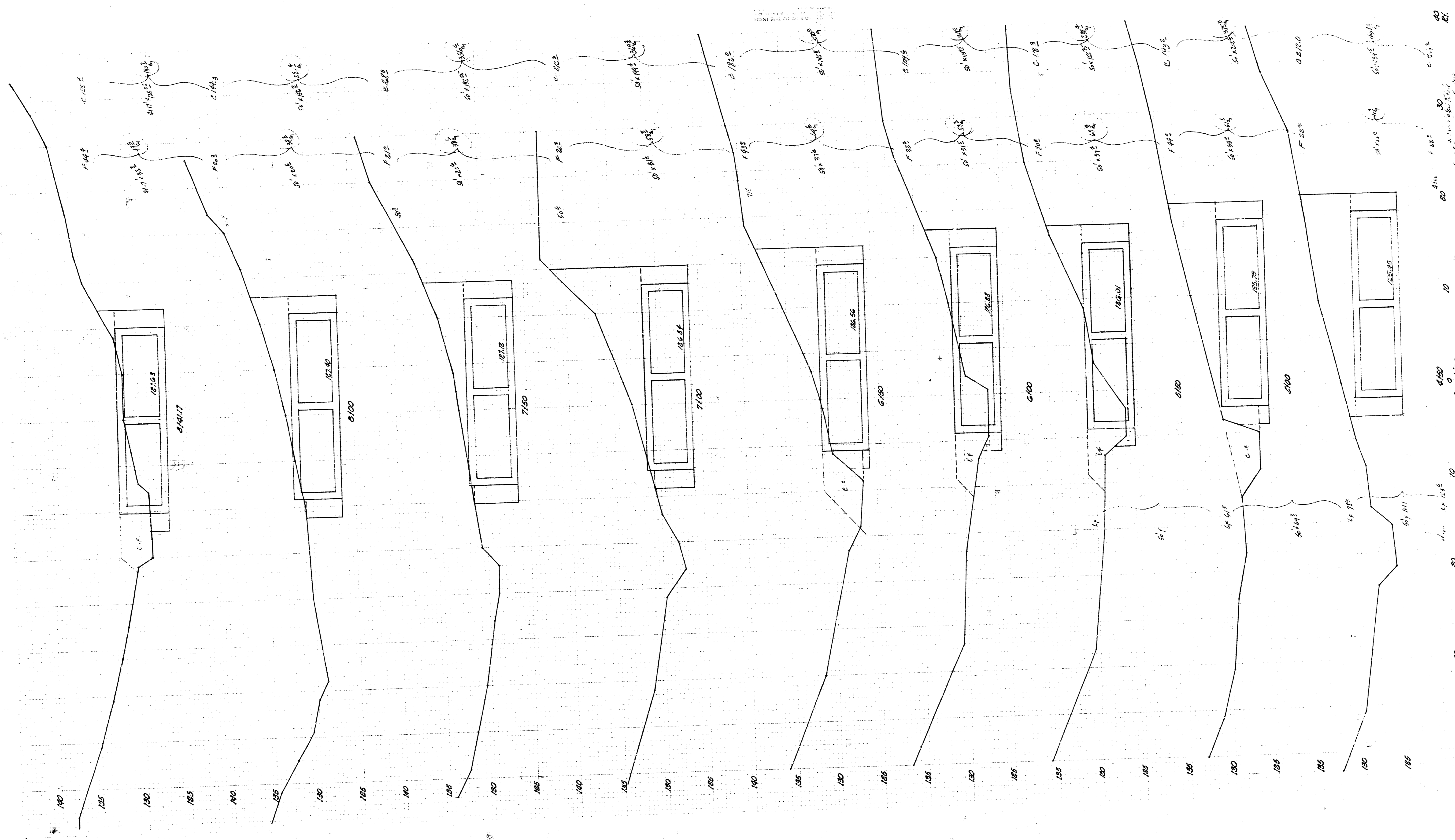
BAR SCHEDULE

TYPE	SIZE	NO.	LENGTH	SHAPE	POUNDS
a	5	2788	20' - 0"	—	58,157.6800
a1	6	2796	20' - 0"	—	83,741.6700
a2	6	2788	20' - 0"	—	83,751.5200
b	4	2680	34' - 0"	—	61,763.2800
c	4	1	20' - 0"	—	13.3600
c1	4	6	11' - 0"	—	44.0880
d	4	18	4' - 0"	—	57.1140
d1	4	18	5' - 0"	—	69.1380
e	4	2	21' - 10"	—	29.1693
e1	4	4	8' - 0"	—	21.3760
h	5	2	10' - 0"	—	21.2077
h1	4	8	10' - 0"	—	53.4400
h2	4	3	20' - 0"	—	40.0800
v	4	5533	5' - 0"	—	22,911.2310
v2	4	12	6' - 0"	—	54.1080
v3	4	6	6' - 0"	—	25.0500
v4	4	16	4' - 0"	—	45.4240
v5	5	21	4' - 0"	—	94.9130
a	5	100	var.	—	1129.7428
a1	5	44	var.	—	694.6750
a2	6	100	var.	—	1626.9122
Extra Steel	6	38	var.	—	276.1150

G.T. = 316,619,795.0 lbs.  
= 158,309.8 tons

**STORM WATER DRAIN #13**  
St. Joseph Medical Park Addition & Har-ell Addition.  
DBCD579073

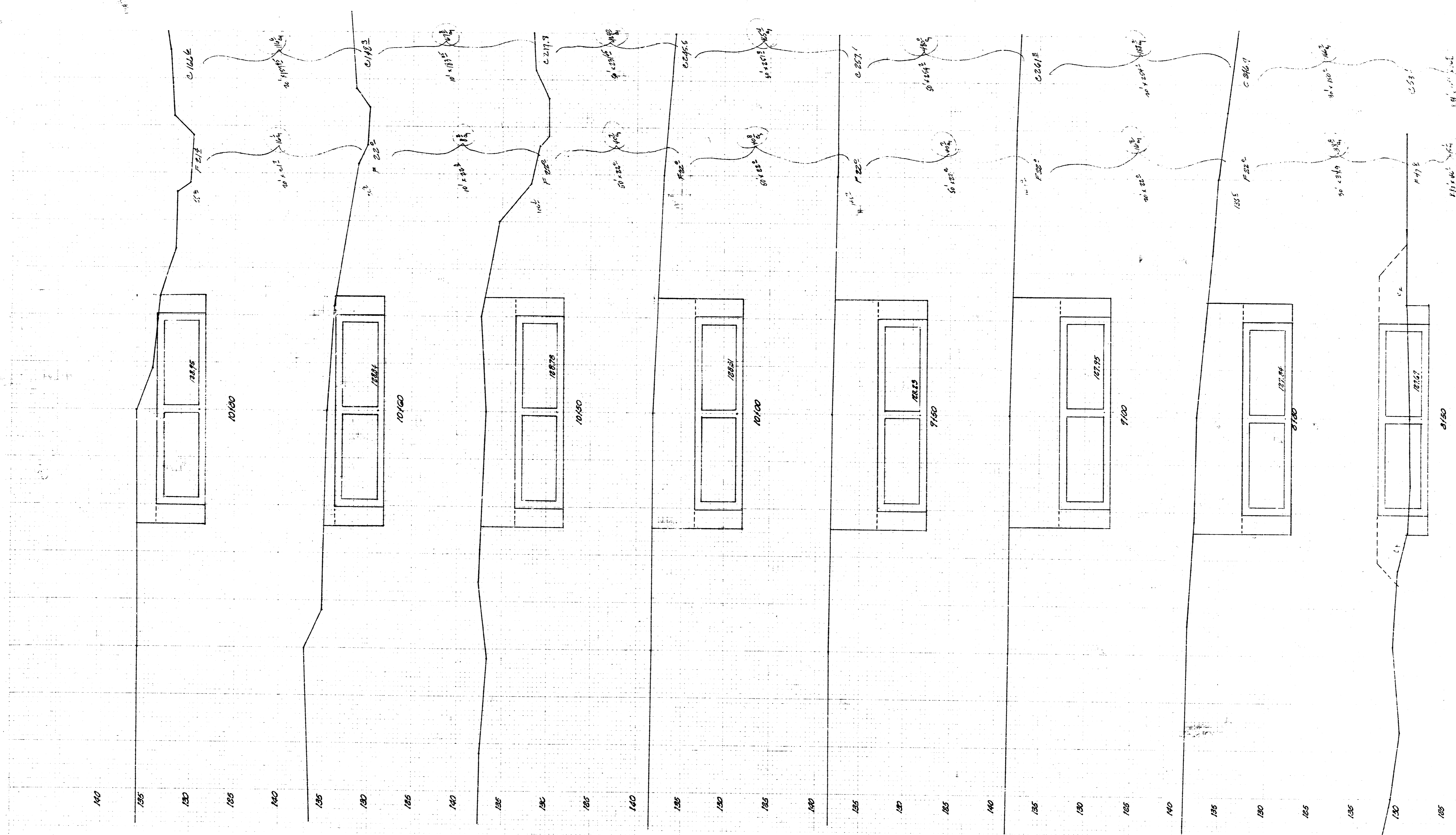




40  
 30  
 20  
 10  
 0  
 Baseline  
 10  
 20  
 30  
 40  
 50  
 60  
 70  
 80  
 90  
 100  
 110  
 120  
 130  
 140  
 150  
 160  
 170  
 180  
 190  
 200  
 210  
 220  
 230  
 240  
 250  
 260  
 270  
 280  
 290  
 300  
 310  
 320  
 330  
 340  
 350  
 360  
 370  
 380  
 390  
 400  
 410  
 420  
 430  
 440  
 450  
 460  
 470  
 480  
 490  
 500  
 510  
 520  
 530  
 540  
 550  
 560  
 570  
 580  
 590  
 600  
 610  
 620  
 630  
 640  
 650  
 660  
 670  
 680  
 690  
 700  
 710  
 720  
 730  
 740  
 750  
 760  
 770  
 780  
 790  
 800  
 810  
 820  
 830  
 840  
 850  
 860  
 870  
 880  
 890  
 900  
 910  
 920  
 930  
 940  
 950  
 960  
 970  
 980  
 990  
 1000  
 1010  
 1020  
 1030  
 1040  
 1050  
 1060  
 1070  
 1080  
 1090  
 1100  
 1110  
 1120  
 1130  
 1140  
 1150  
 1160  
 1170  
 1180  
 1190  
 1200  
 1210  
 1220  
 1230  
 1240  
 1250  
 1260  
 1270  
 1280  
 1290  
 1300  
 1310  
 1320  
 1330  
 1340  
 1350  
 1360  
 1370  
 1380  
 1390  
 1400  
 1410  
 1420  
 1430  
 1440  
 1450  
 1460  
 1470  
 1480  
 1490  
 1500  
 1510  
 1520  
 1530  
 1540  
 1550  
 1560  
 1570  
 1580  
 1590  
 1600  
 1610  
 1620  
 1630  
 1640  
 1650  
 1660  
 1670  
 1680  
 1690  
 1700  
 1710  
 1720  
 1730  
 1740  
 1750  
 1760  
 1770  
 1780  
 1790  
 1800  
 1810  
 1820  
 1830  
 1840  
 1850  
 1860  
 1870  
 1880  
 1890  
 1900  
 1910  
 1920  
 1930  
 1940  
 1950  
 1960  
 1970  
 1980  
 1990  
 2000  
 2010  
 2020  
 2030  
 2040  
 2050  
 2060  
 2070  
 2080  
 2090  
 2100  
 2110  
 2120  
 2130  
 2140  
 2150  
 2160  
 2170  
 2180  
 2190  
 2200  
 2210  
 2220  
 2230  
 2240  
 2250  
 2260  
 2270  
 2280  
 2290  
 2300  
 2310  
 2320  
 2330  
 2340  
 2350  
 2360  
 2370  
 2380  
 2390  
 2400  
 2410  
 2420  
 2430  
 2440  
 2450  
 2460  
 2470  
 2480  
 2490  
 2500  
 2510  
 2520  
 2530  
 2540  
 2550  
 2560  
 2570  
 2580  
 2590  
 2600  
 2610  
 2620  
 2630  
 2640  
 2650  
 2660  
 2670  
 2680  
 2690  
 2700  
 2710  
 2720  
 2730  
 2740  
 2750  
 2760  
 2770  
 2780  
 2790  
 2800  
 2810  
 2820  
 2830  
 2840  
 2850  
 2860  
 2870  
 2880  
 2890  
 2900  
 2910  
 2920  
 2930  
 2940  
 2950  
 2960  
 2970  
 2980  
 2990  
 3000  
 3010  
 3020  
 3030  
 3040  
 3050  
 3060  
 3070  
 3080  
 3090  
 3100  
 3110  
 3120  
 3130  
 3140  
 3150  
 3160  
 3170  
 3180  
 3190  
 3200  
 3210  
 3220  
 3230  
 3240  
 3250  
 3260  
 3270  
 3280  
 3290  
 3300  
 3310  
 3320  
 3330  
 3340  
 3350  
 3360  
 3370  
 3380  
 3390  
 3400  
 3410  
 3420  
 3430  
 3440  
 3450  
 3460  
 3470  
 3480  
 3490  
 3500  
 3510  
 3520  
 3530  
 3540  
 3550  
 3560  
 3570  
 3580  
 3590  
 3600  
 3610  
 3620  
 3630  
 3640  
 3650  
 3660  
 3670  
 3680  
 3690  
 3700  
 3710  
 3720  
 3730  
 3740  
 3750  
 3760  
 3770  
 3780  
 3790  
 3800  
 3810  
 3820  
 3830  
 3840  
 3850  
 3860  
 3870  
 3880  
 3890  
 3900  
 3910  
 3920  
 3930  
 3940  
 3950  
 3960  
 3970  
 3980  
 3990  
 4000  
 4010  
 4020  
 4030  
 4040  
 4050  
 4060  
 4070  
 4080  
 4090  
 4100  
 4110  
 4120  
 4130  
 4140  
 4150  
 4160  
 4170  
 4180  
 4190  
 4200  
 4210  
 4220  
 4230  
 4240  
 4250  
 4260  
 4270  
 4280  
 4290  
 4300  
 4310  
 4320  
 4330  
 4340  
 4350  
 4360  
 4370  
 4380  
 4390  
 4400  
 4410  
 4420  
 4430  
 4440  
 4450  
 4460  
 4470  
 4480  
 4490  
 4500  
 4510  
 4520  
 4530  
 4540  
 4550  
 4560  
 4570  
 4580  
 4590  
 4600  
 4610  
 4620  
 4630  
 4640  
 4650  
 4660  
 4670  
 4680  
 4690  
 4700  
 4710  
 4720  
 4730  
 4740  
 4750  
 4760  
 4770  
 4780  
 4790  
 4800  
 4810  
 4820  
 4830  
 4840  
 4850  
 4860  
 4870  
 4880  
 4890  
 4900  
 4910  
 4920  
 4930  
 4940  
 4950  
 4960  
 4970  
 4980  
 4990  
 5000  
 5010  
 5020  
 5030  
 5040  
 5050  
 5060  
 5070  
 5080  
 5090  
 5100  
 5110  
 5120  
 5130  
 5140  
 5150  
 5160  
 5170  
 5180  
 5190  
 5200  
 5210  
 5220  
 5230  
 5240  
 5250  
 5260  
 5270  
 5280  
 5290  
 5300  
 5310  
 5320  
 5330  
 5340  
 5350  
 5360  
 5370  
 5380  
 5390  
 5400  
 5410  
 5420  
 5430  
 5440  
 5450  
 5460  
 5470  
 5480  
 5490  
 5500  
 5510  
 5520  
 5530  
 5540  
 5550  
 5560  
 5570  
 5580  
 5590  
 5600  
 5610  
 5620  
 5630  
 5640  
 5650  
 5660  
 5670  
 5680  
 5690  
 5700  
 5710  
 5720  
 5730  
 5740  
 5750  
 5760  
 5770  
 5780  
 5790  
 5800  
 5810  
 5820  
 5830  
 5840  
 5850  
 5860  
 5870  
 5880  
 5890  
 5900  
 5910  
 5920  
 5930  
 5940  
 5950  
 5960  
 5970  
 5980  
 5990  
 6000  
 6010  
 6020  
 6030  
 6040  
 6050  
 6060  
 6070  
 6080  
 6090  
 6100  
 6110  
 6120  
 6130  
 6140  
 6150  
 6160  
 6170  
 6180  
 6190  
 6200  
 6210  
 6220  
 6230  
 6240  
 6250  
 6260  
 6270  
 6280  
 6290  
 6300  
 6310  
 6320  
 6330  
 6340  
 6350  
 6360  
 6370  
 6380  
 6390  
 6400  
 6410  
 6420  
 6430  
 6440  
 6450  
 6460  
 6470  
 6480  
 6490  
 6500  
 6510  
 6520  
 6530  
 6540  
 6550  
 6560  
 6570  
 6580  
 6590  
 6600  
 6610  
 6620  
 6630  
 6640  
 6650  
 6660  
 6670  
 6680  
 6690  
 6700  
 6710  
 6720  
 6730  
 6740  
 6750  
 6760  
 6770  
 6780  
 6790  
 6800  
 6810  
 6820  
 6830  
 6840  
 6850  
 6860  
 6870  
 6880  
 6890  
 6900  
 6910  
 6920  
 6930  
 6940  
 6950  
 6960  
 6970  
 6980  
 6990  
 7000  
 7010  
 7020  
 7030  
 7040  
 7050  
 7060  
 7070  
 7080  
 7090  
 7100  
 7110  
 7120  
 7130  
 7140  
 7150  
 7160  
 7170  
 7180  
 7190  
 7200  
 7210  
 7220  
 7230  
 7240  
 7250  
 7260  
 7270  
 7280  
 7290  
 7300  
 7310  
 7320  
 7330  
 7340  
 7350  
 7360  
 7370  
 7380  
 7390  
 7400  
 7410  
 7420  
 7430  
 7440  
 7450  
 7460  
 7470  
 7480  
 7490  
 7500  
 7510  
 7520  
 7530  
 7540  
 7550  
 7560  
 7570  
 7580  
 7590  
 7600  
 7610  
 7620  
 7630  
 7640  
 7650  
 7660  
 7670  
 7680  
 7690  
 7700  
 7710  
 7720  
 7730  
 7740  
 7750  
 7760  
 7770  
 7780  
 7790  
 7800  
 7810  
 7820  
 7830  
 7840  
 7850  
 7860  
 7870  
 7880  
 7890  
 7900  
 7910  
 7920  
 7930  
 7940  
 7950  
 7960  
 7970  
 7980  
 7990  
 8000  
 8010  
 8020  
 8030  
 8040  
 8050  
 8060  
 8070  
 8080  
 8090  
 8100  
 8110  
 8120  
 8130  
 8140  
 8150  
 8160  
 8170  
 8180  
 8190  
 8200  
 8210  
 8220  
 8230  
 8240  
 8250  
 8260  
 8270  
 8280  
 8290  
 8300  
 8310  
 8320  
 8330  
 8340  
 8350  
 8360  
 8370  
 8380  
 8390  
 8400  
 8410  
 8420  
 8430  
 8440  
 8450  
 8460  
 8470  
 8480  
 8490  
 8500  
 8510  
 8520  
 8530  
 8540  
 8550  
 8560  
 8570  
 8580  
 8590  
 8600  
 8610  
 8620  
 8630  
 8640  
 8650  
 8660  
 8670  
 8680  
 8690  
 8700  
 8710  
 8720  
 8730  
 8740  
 8750  
 8760  
 8770  
 8780  
 8790  
 8800  
 8810  
 8820  
 8830  
 8840  
 8850  
 8860  
 8870  
 8880  
 8890  
 8900  
 8910  
 8920  
 8930  
 8940  
 8950  
 8960  
 8970  
 8980  
 8990  
 9000  
 9010  
 9020  
 9030  
 9040  
 9050  
 9060  
 9070  
 9080  
 9090  
 9100  
 9110  
 9120  
 9130  
 9140  
 9150  
 9160  
 9170  
 9180  
 9190  
 9200  
 9210  
 9220  
 9230  
 9240  
 9250  
 9260  
 9270  
 9280  
 9290  
 9300  
 9310  
 9320  
 9330  
 9340  
 9350  
 9360  
 9370  
 9380  
 9390  
 9400  
 9410  
 9420  
 9430  
 9440  
 9450  
 9460  
 9470  
 9480  
 9490  
 9500  
 9510  
 9520  
 9530  
 9540  
 9550  
 9560  
 9570  
 9580  
 9590  
 9600  
 9610  
 9620  
 9630  
 9640  
 9650  
 9660  
 9670  
 9680  
 9690  
 9700  
 9710  
 9720  
 9730  
 9740  
 9750  
 9760  
 9770  
 9780  
 9790  
 9800  
 9810  
 9820  
 9830  
 9840  
 9850  
 9860  
 9870  
 9880  
 9890  
 9900  
 9910  
 9920  
 9930  
 9940  
 9950  
 9960  
 9970  
 9980  
 9990  
 10000

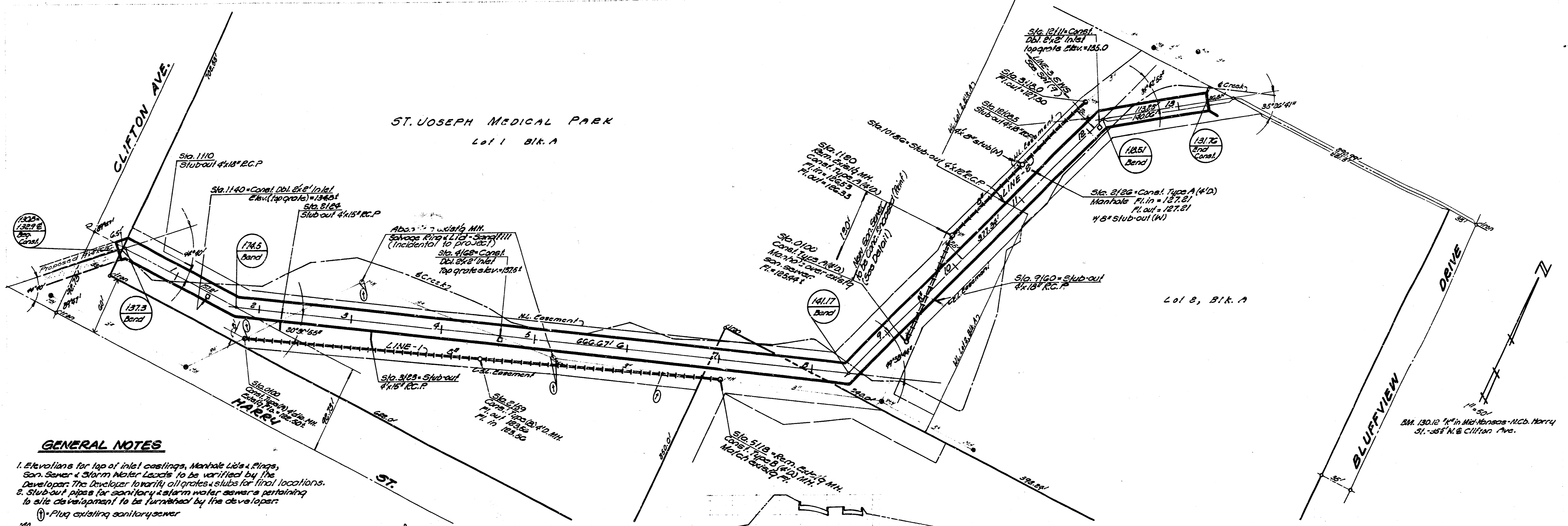
S. P. P. C. C. in association  
 with the Texas Medical Park Admin.  
 Storm Water Drain #15 DWD5307.

1/11



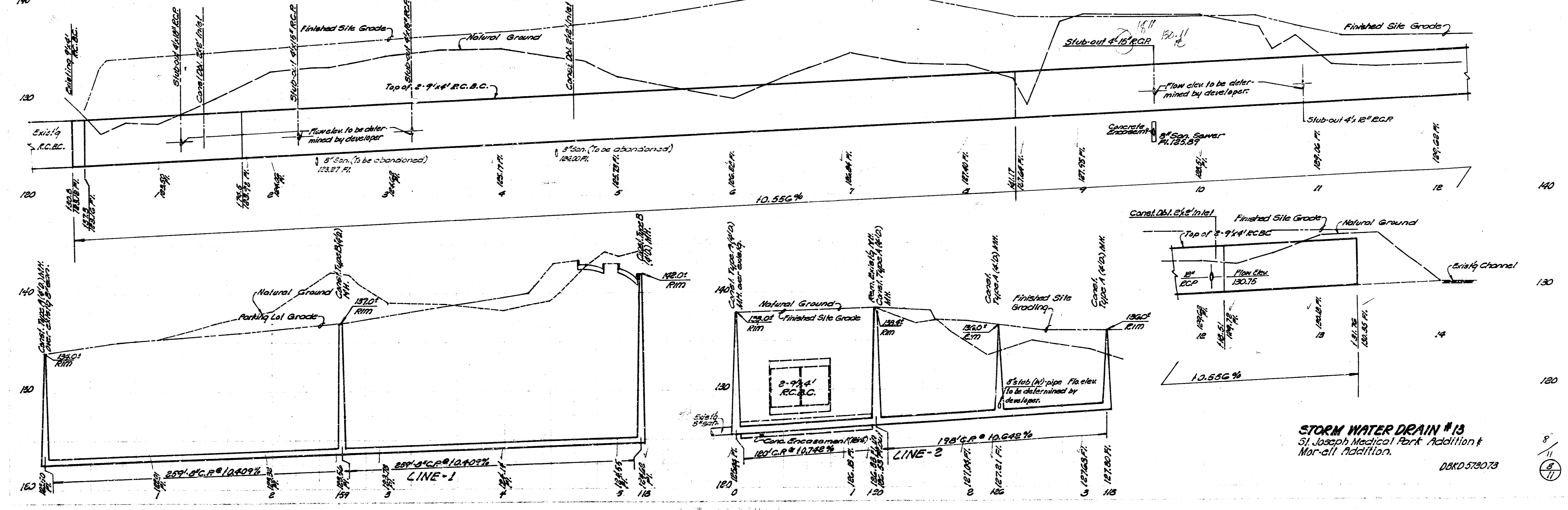
8-94-1-PC-B-C in cooperation  
 with St. Joseph Medical Park Admin.  
 & Marshall Admin.  
 Storm Water Drain #13 10/12/2008



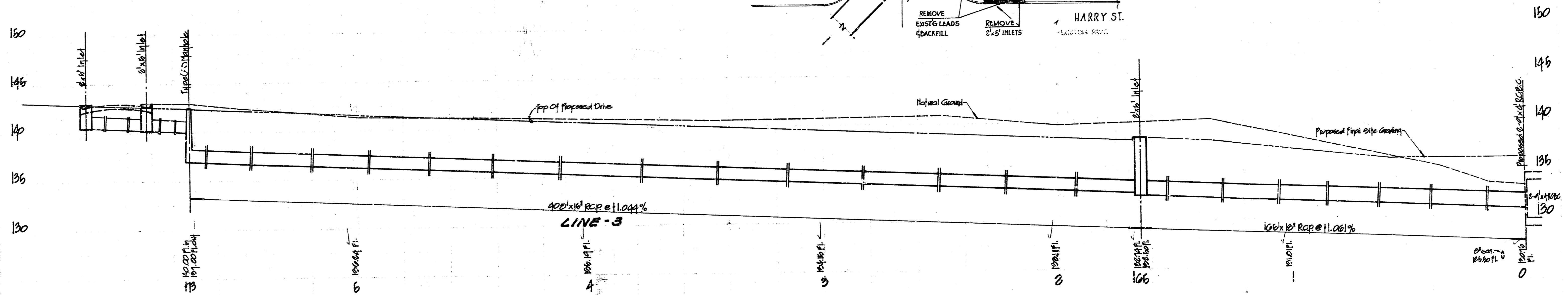
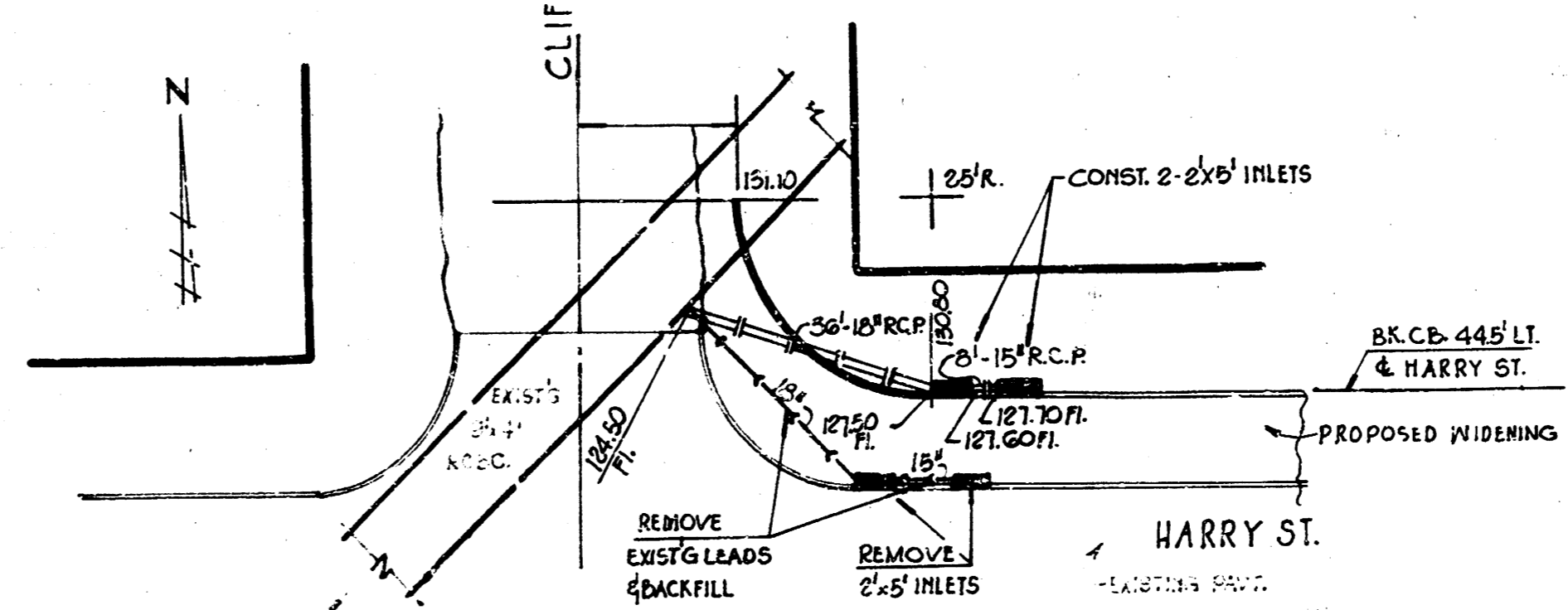
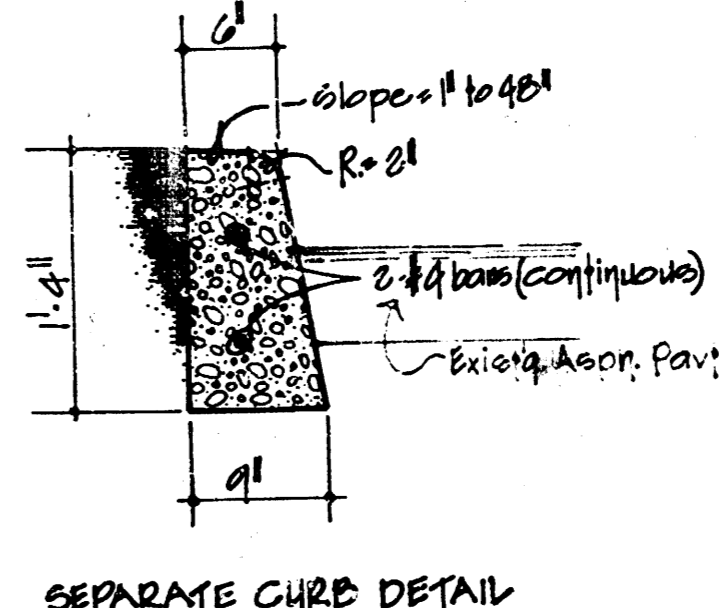
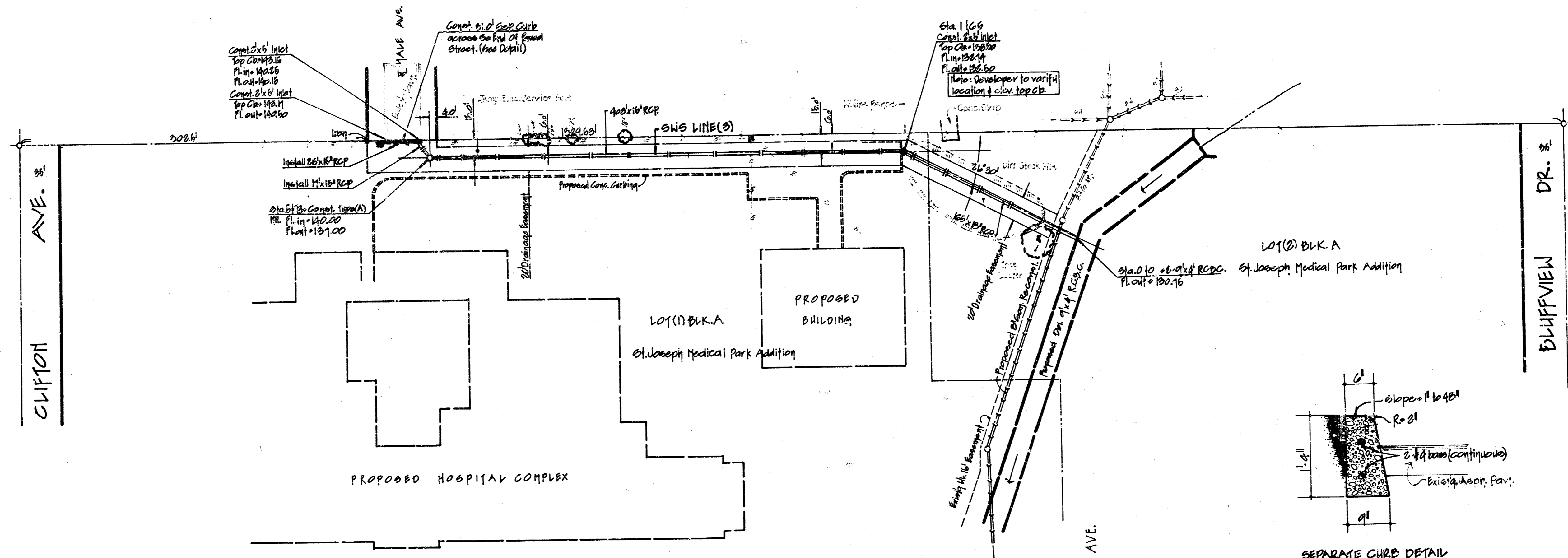


**GENERAL NOTES**

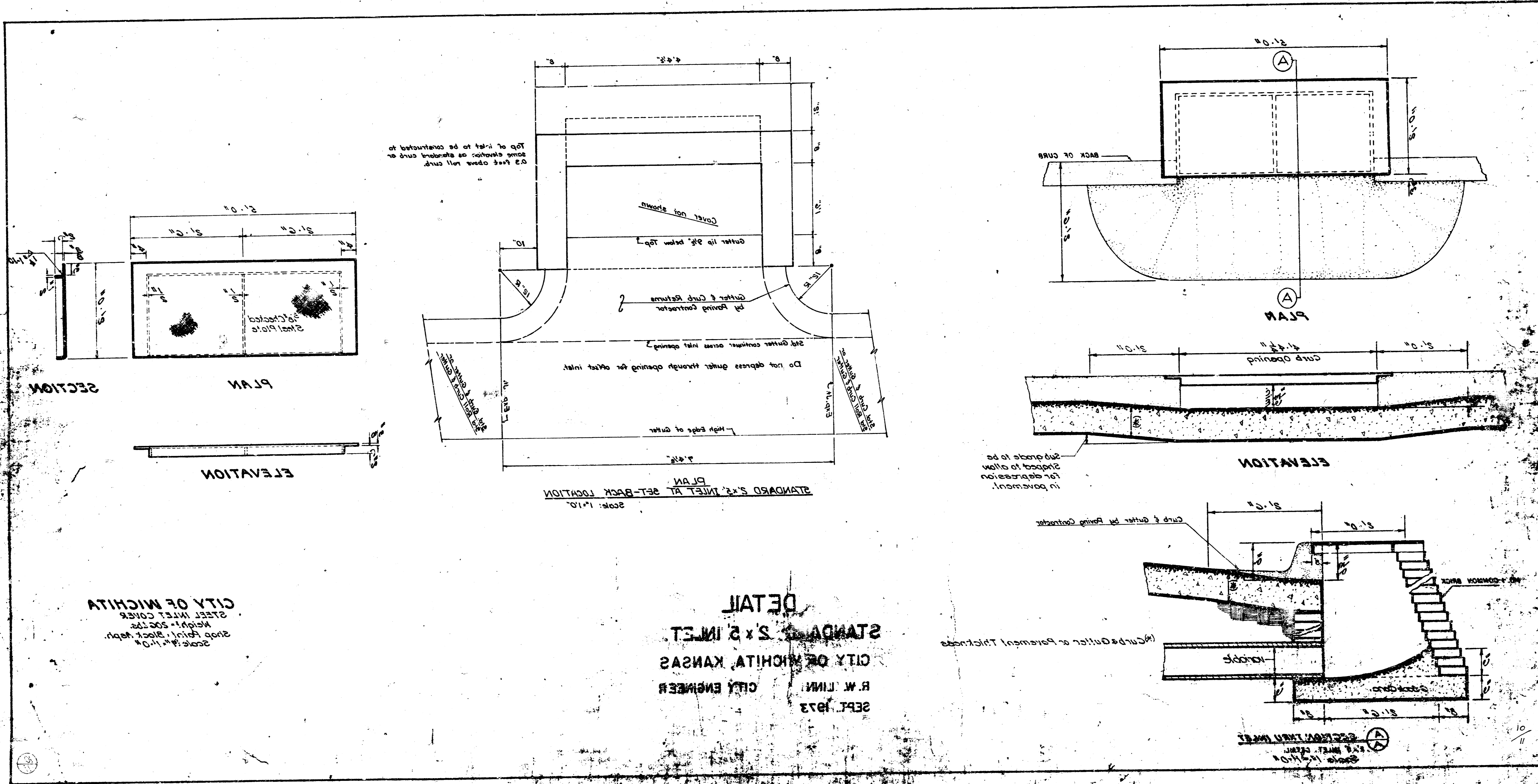
1. Elevations for top of inlet castings, Manhole Lids & Rings, San. Sewer & Storm Water Latches to be verified by the Developer. The Developer to verify all grades & elevations for final locations.
2. Stub-out pipes for sanitary & storm water sewers pertaining to site development to be furnished by the developer.
3. Plug existing sanitary sewer.



**STORM WATER DRAIN #13**  
 St. Joseph Medical Park Addition &  
 Morrell Addition.  
 D&R 5790.73

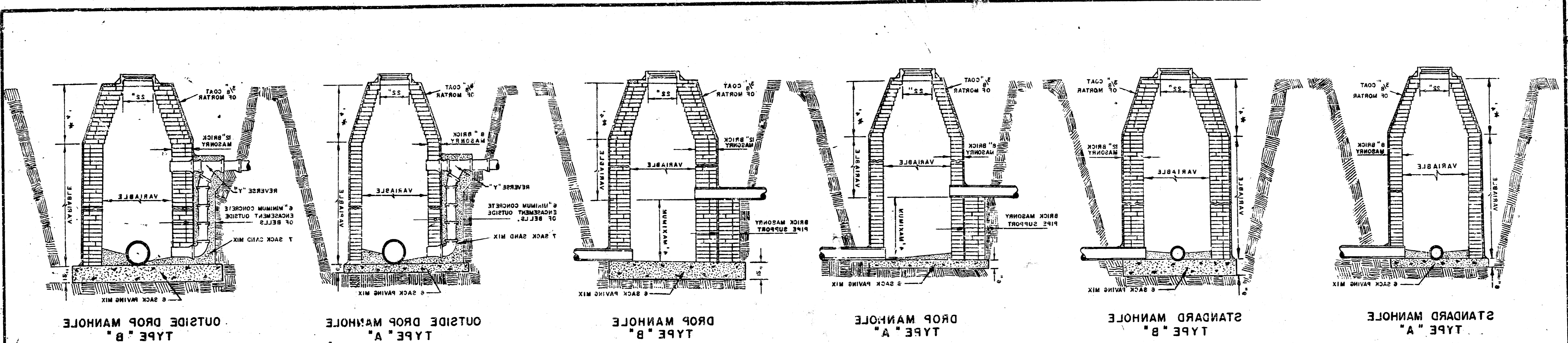


STORM WATER DRAIN #10  
 St. Joseph Medical Park Addition &  
 Morrell Addition.  
 Proj. No. DAKD 012013



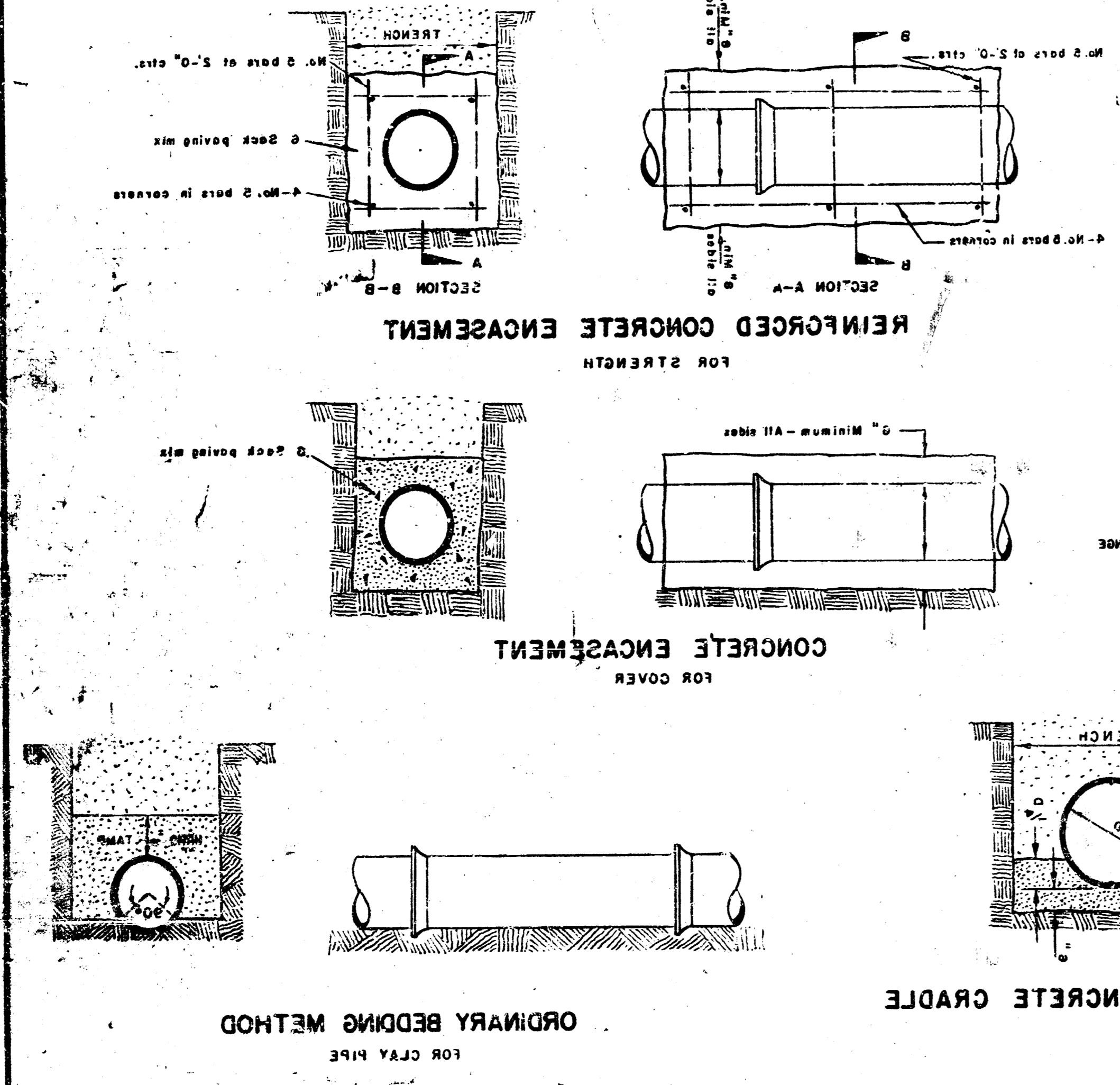
CITY OF WICHITA  
 STREET INLET COVER  
 Weight 500 lbs.  
 Shop fabric. Black. Spdn.  
 Scale 1/4" = 1'-0"

DETAIL  
 STANDARD 2'-0" INLET  
 CITY OF WICHITA, KANSAS  
 R. W. LIND  
 CITY ENGINEER  
 SEPT. 1973

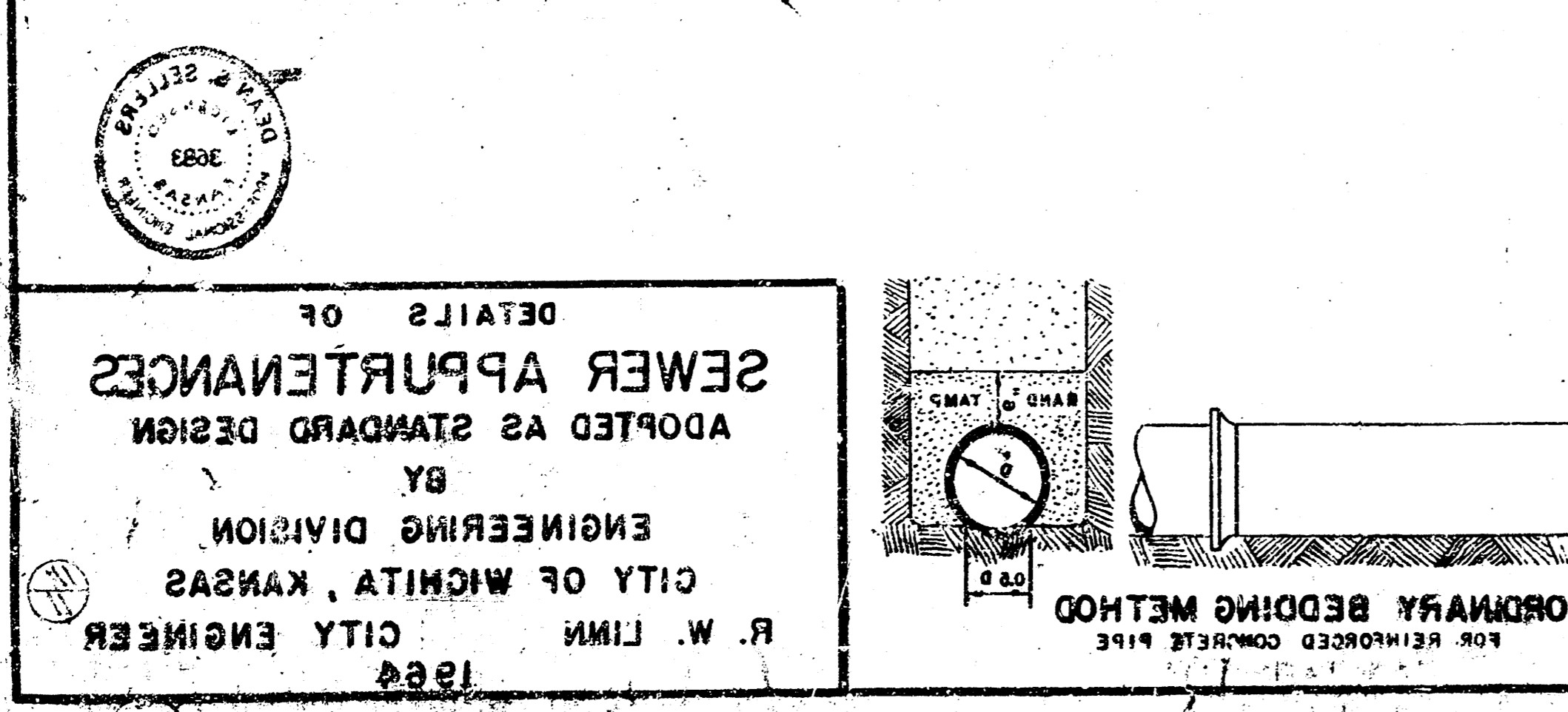


STANDARD MANHOLE TYPE "A"  
 STANDARD MANHOLE TYPE "B"  
 OUTSIDE DROP MANHOLE TYPE "A"  
 OUTSIDE DROP MANHOLE TYPE "B"

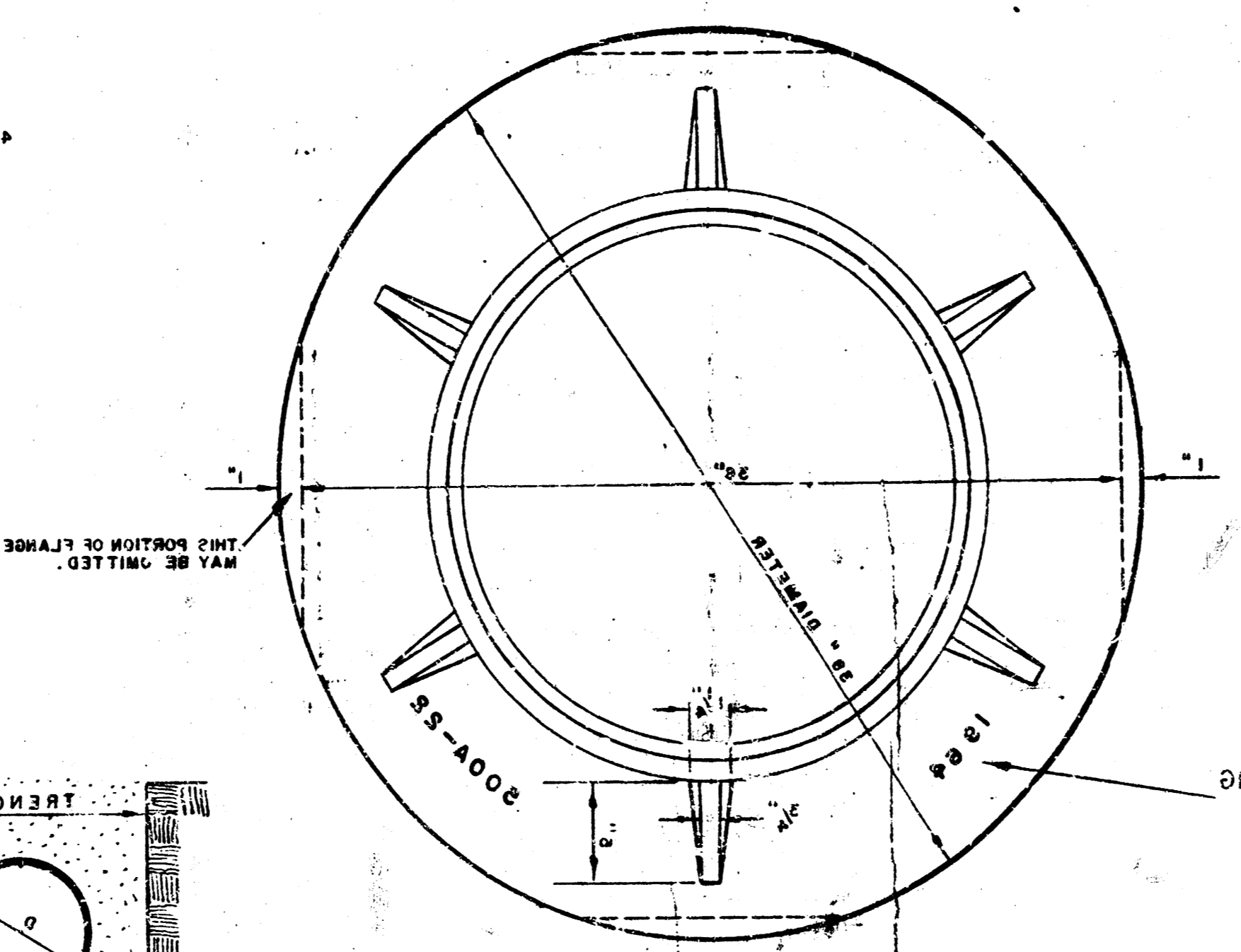
\* DRAW "E" ON 5" DIA. H.M.



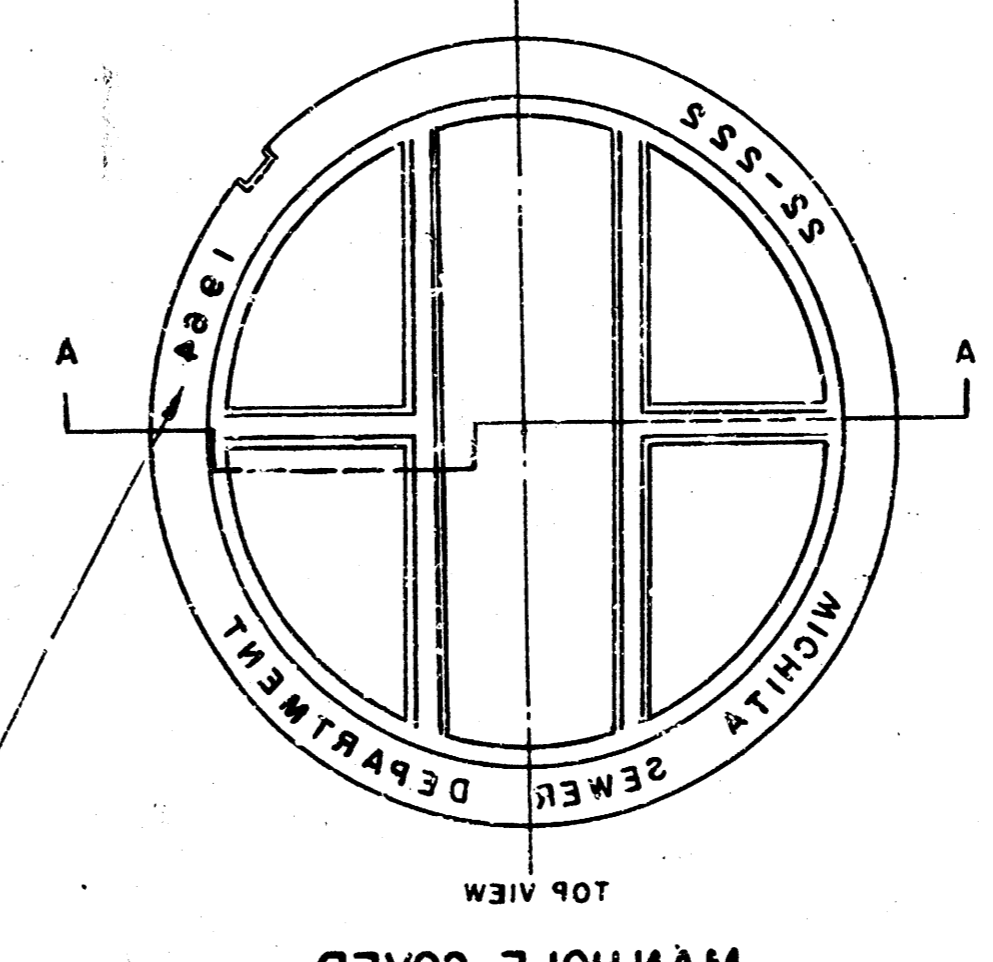
REINFORCED CONCRETE ENCASEMENT FOR STRENGTH  
 CONCRETE ENCASEMENT FOR COVER



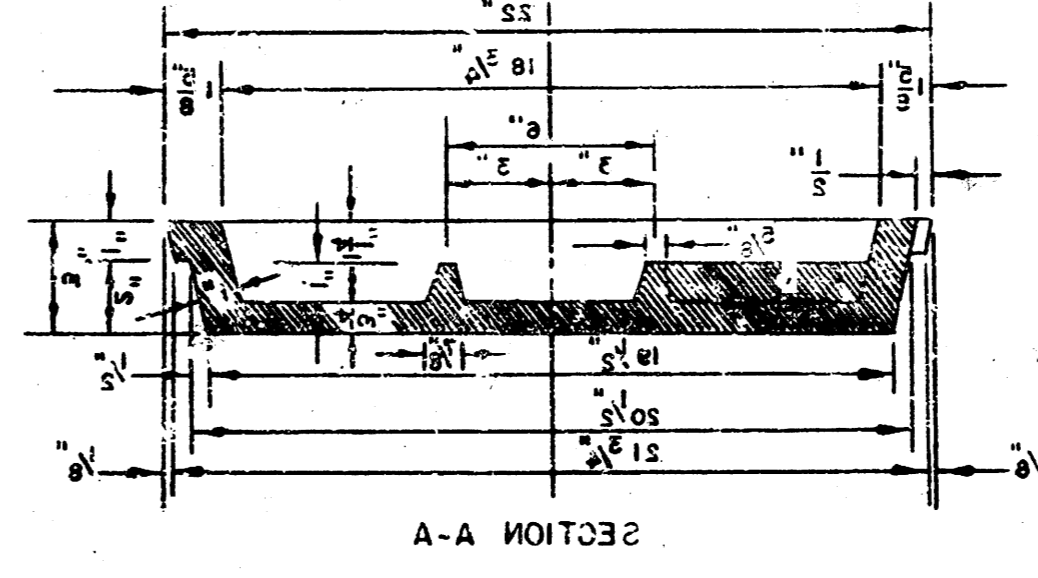
DETAIL OF CONCRETE CRADLE  
 ORDINARY BEDDING METHOD FOR CLAY PIPE



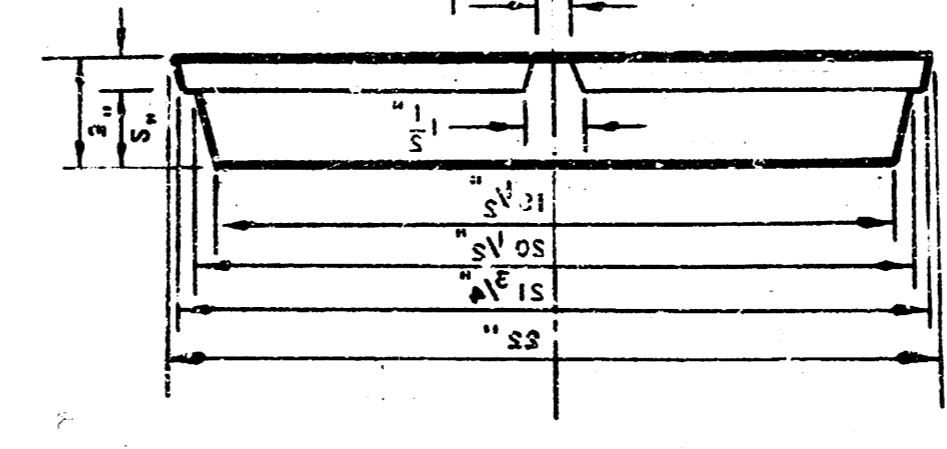
MANHOLE RING  
 WEIGHT 505 LBS.



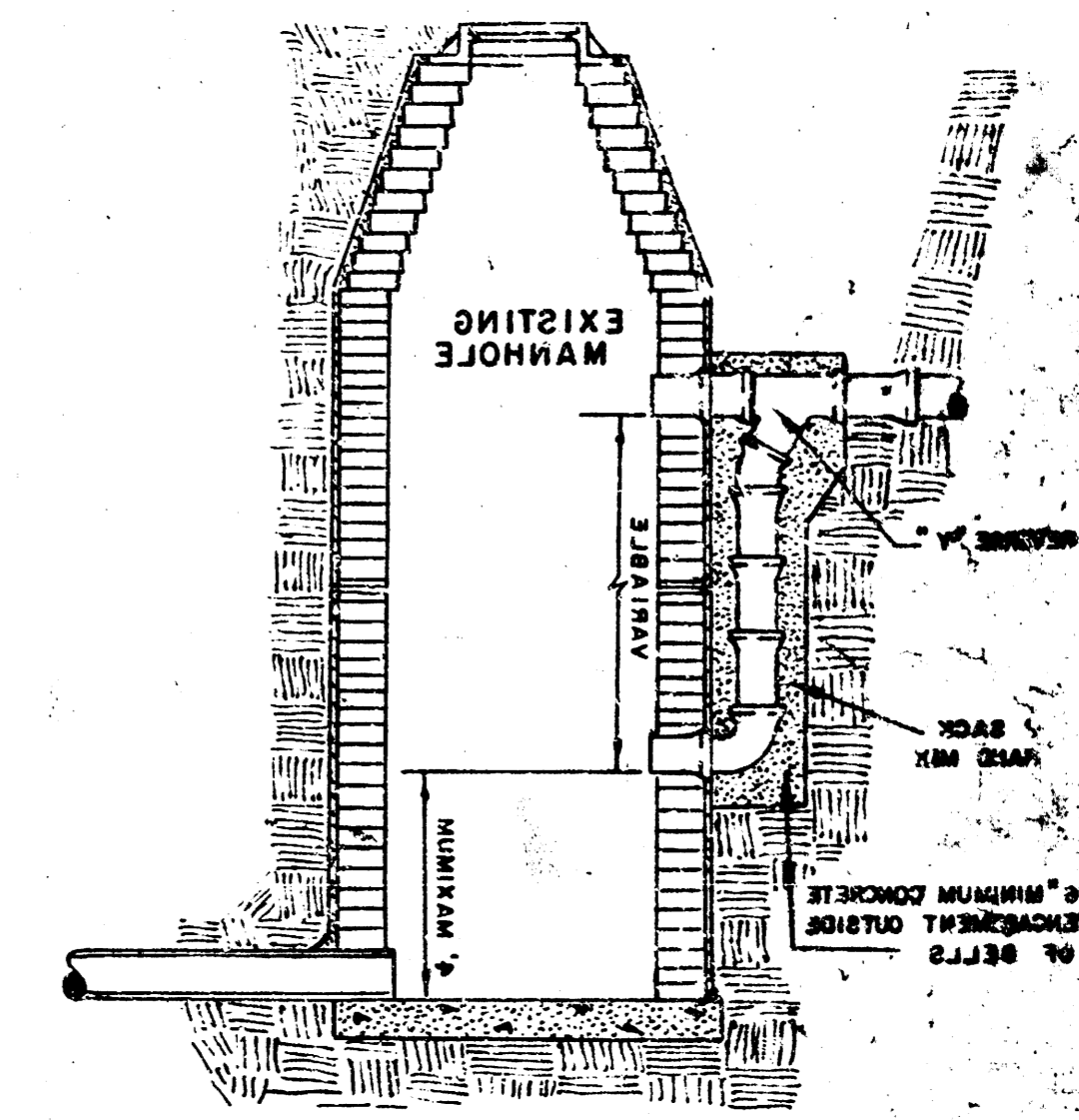
MANHOLE COVER  
 WEIGHT 110 LBS.



MANHOLE COVER



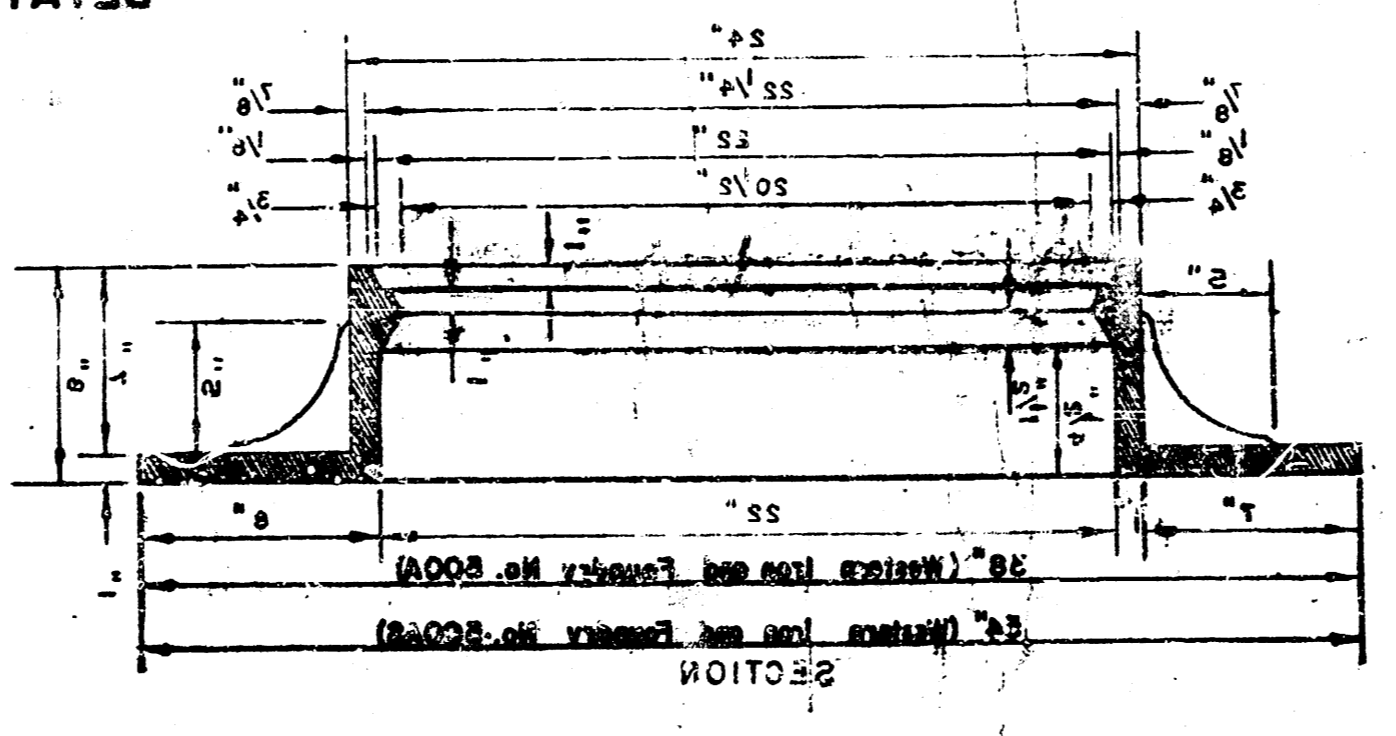
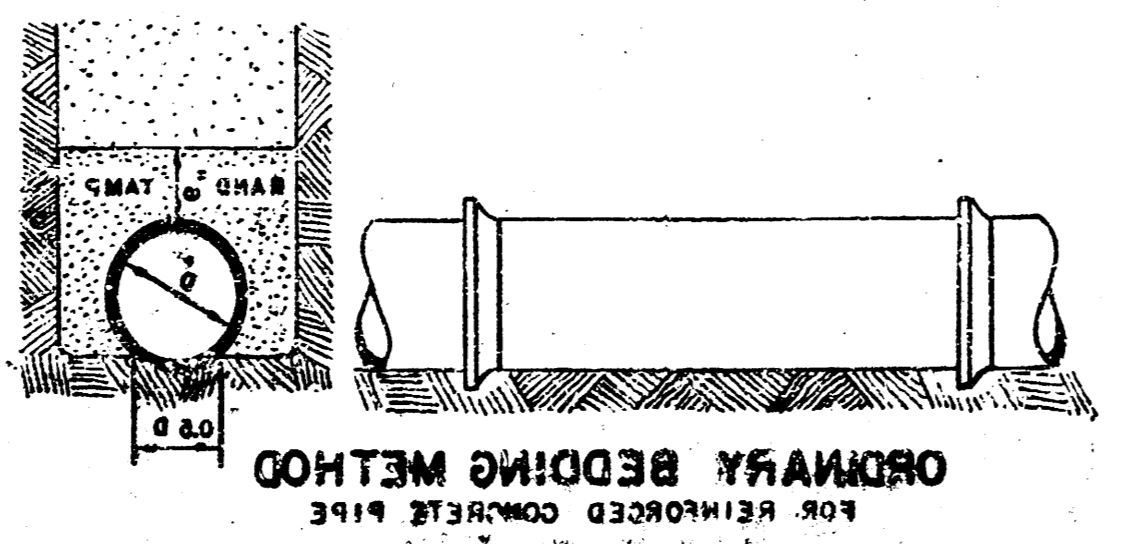
MANHOLE COVER



DETAIL OF DROP STACK FOR EXISTING MANHOLES IN GROUND WATER

MANHOLES  
 THE CONCRETE USED FOR MORTAR IN MANHOLES SHALL CONTAIN 8 SACKS OF CEMENT PER CUBIC YARD.  
 STANDARD MANHOLES AND DROP MANHOLES, REARERS OF DIAMETER, SHALL BE BID AT ONE PRICE AS STANDARD MANHOLES.  
 SINGLE OR DOUBLE OUTSIDE DROP MANHOLES SHALL BE BID AT ONE PRICE AS OUTSIDE DROP MANHOLES.  
 ALL MANHOLES WITH PIPES LARGER THAN 24" SHALL BE 5' DIAMETER UNLESS OTHERWISE SPECIFIED ON PLAN. ALL H.M.'S WITH PIPES 24" & SMALLER SHALL BE 4' DIA.

1924  
 CITY ENGINEER  
 R. W. LIND  
 CITY OF WICHITA, KANSAS  
 ENGINEERING DIVISION  
 BY  
 ADAPTED AS STANDARD DESIGN  
 SEWER APURTENANCES  
 DETAILS OF



MANHOLE RING

OUTSIDE CIRCUMFERENCE OF COVER AND THE INNER FACE AND SEAT OF RING TO BE MATCHING INT.