

FLOOD DETENTION RESERVOIR NO. 23

IN RESERVE "C" BRIARWOOD ESTATES

CITY OF WICHITA, KANSAS

PROJECT NO. 468-82005

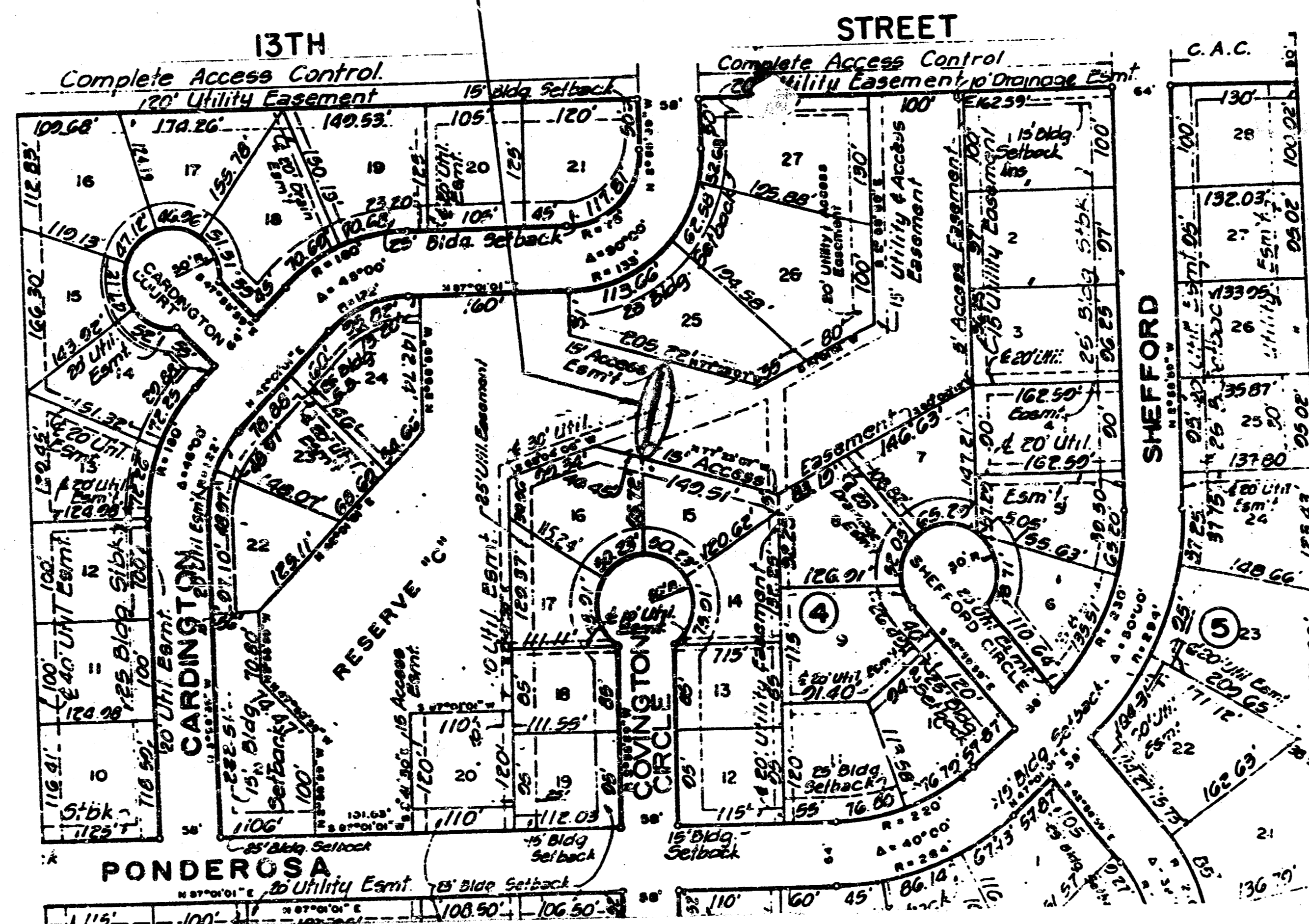
M.E. LINDEBAK CITY ENGINEER

INDEX NO. 750067

GENERAL NOTES

- ~~1. THE BID ITEM LUMP SUM REINFORCED CONCRETE FLOOD DETENTION RESERVOIR CONTROL STRUCTURE AND SPILLWAY SHALL INCLUDE THE FOLLOWING ITEMS: 80 L.F. CONC. WEIR, RIP-RAP AND SPILLWAY CONSTRUCTION, INCLUDING EARTHWORK COMPACTION AND AREA GRADING. ALL GRASSED AREAS DISTURBED BY THE CONSTRUCTION OF THE IMPROVEMENTS UNDER THIS CONTRACT SHALL BE REPLANTED WITH REBEL II FESCUE GRASS SEED AT AN APPLICATION RATE OF 10 LBS / 1000 S.F. FERTILIZER SHALL BE 16-20-6 APPLIED AT A RATE OF 10 LBS / 1000 S.F.~~
2. BORROW EXCAVATION SHALL BE TAKEN FROM THE UP STREAM LAKE AREA AND CONFORM TO GENERAL EXIST'G OUTLINE. ALL BORROW EXCAVATION AND RIP-RAP MATERIAL SHALL BE OBTAINED ON SITE. ANY SURPLUS MATERIAL SHALL BE PLACED ON-SITE, AND GRADED AND SEEDED. SURPLUS RIP-RAP MATERIAL SHALL BE USED FOR CHANNEL STABILIZATION DOWNSTREAM FROM THE PROPOSED STRUCTURE OR BURIED AND COVERED AS APPROVED BY THE FIELD ENGINEER.
3. APPROX. 20 CU.YDS CONCRETE IN PLACE SHALL BE STANDARD PAVING MIX.

PROJECT LOCATION

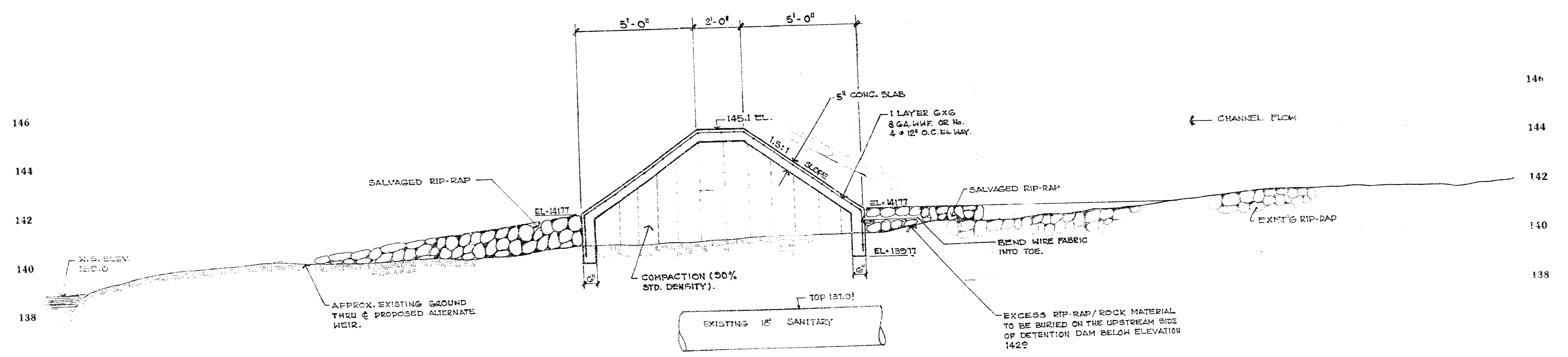
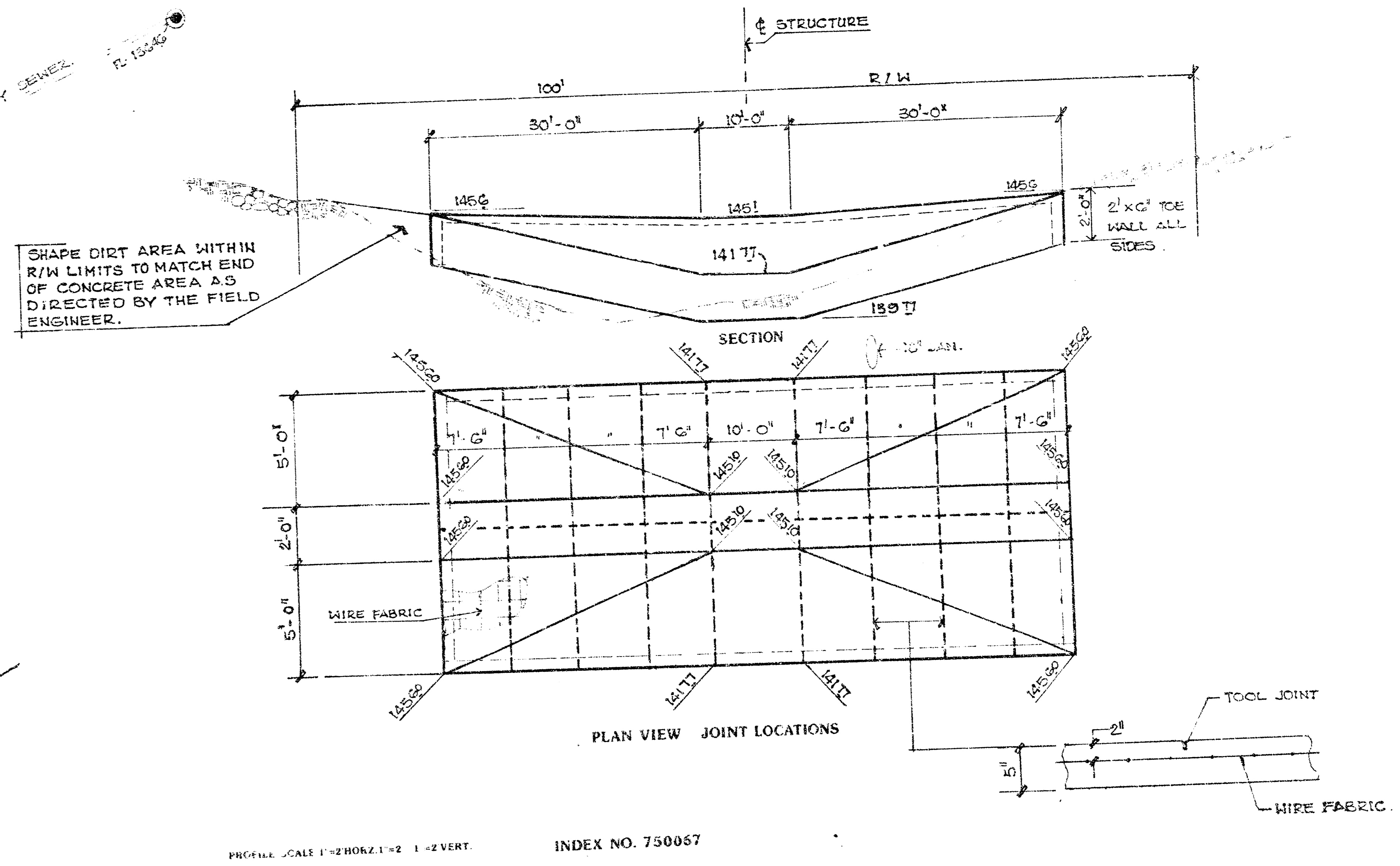
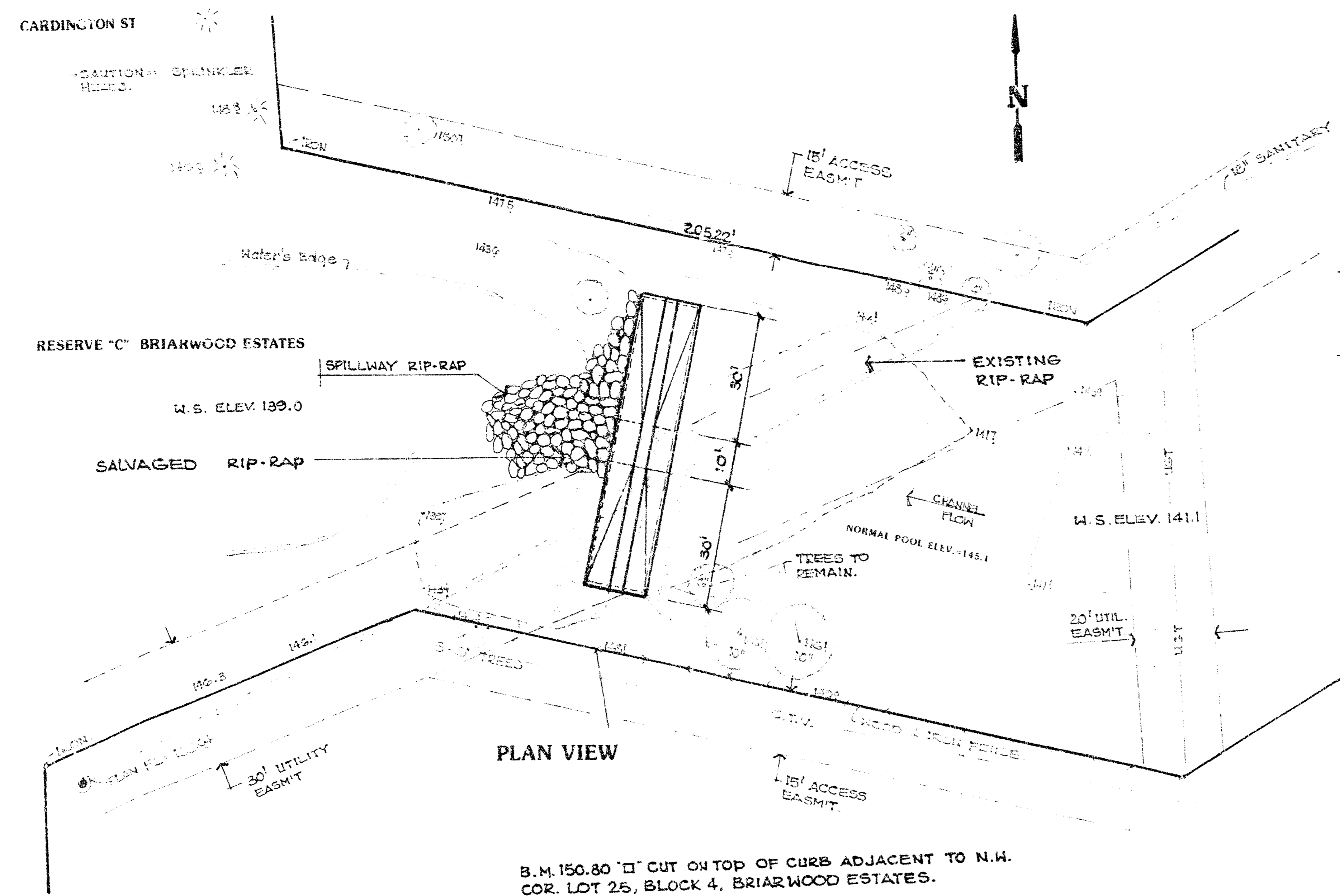


INDEX TO DRAWINGS

- 1 COVER SHEET
- 2 SITE PLAN

REVISED 1-5-90
 REVISED SEPT. 1990

FILMED FROM THE BEST AVAILABLE COPY



PROJECT DESCRIPTION
FLOOD DETENTION RESERVOIR NO. 23

PROJECT NUMBER
468-82005

FILMED FROM THE BEST AVAILABLE COPY